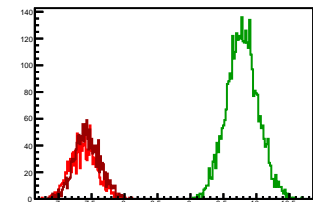


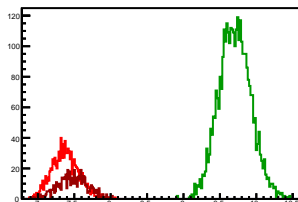
### Cycle 1, PosHel

Entries: 1363	Entries: 3725	Entries: 1615
Mean: 7.3854 +/- 0.0055	Mean: 9.7871 +/- 0.0039	Mean: 7.4346 +/- 0.0049
Std Dev: 0.2014 +/- 0.0039	Std Dev: 0.2382 +/- 0.0028	Std Dev: 0.1957 +/- 0.0034



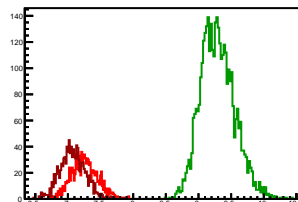
### Cycle 2, PosHel

Entries: 1040	Entries: 3438	Entries: 556
Mean: 7.3810 +/- 0.0058	Mean: 9.7052 +/- 0.0037	Mean: 7.4848 +/- 0.0084
Std Dev: 0.1883 +/- 0.0041	Std Dev: 0.2193 +/- 0.0026	Std Dev: 0.1971 +/- 0.0059



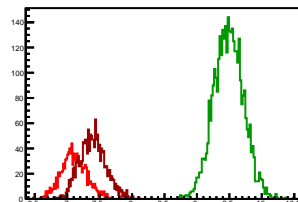
### Cycle 3, PosHel

Entries: 1026	Entries: 3754	Entries: 1083
Mean: 7.2538 +/- 0.0062	Mean: 9.2935 +/- 0.0042	Mean: 7.0726 +/- 0.0059
Std Dev: 0.1981 +/- 0.0044	Std Dev: 0.2602 +/- 0.0030	Std Dev: 0.1946 +/- 0.0042



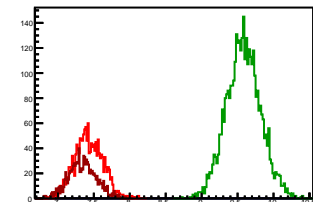
### Cycle 4, PosHel

Entries: 1065	Entries: 3721	Entries: 1592
Mean: 7.1060 +/- 0.0060	Mean: 9.4880 +/- 0.0038	Mean: 7.3930 +/- 0.0051
Std Dev: 0.1972 +/- 0.0043	Std Dev: 0.2308 +/- 0.0027	Std Dev: 0.2037 +/- 0.0036



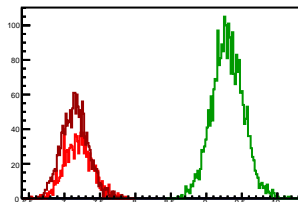
### Cycle 5, PosHel

Entries: 1583	Entries: 3777	Entries: 1052
Mean: 7.4264 +/- 0.0050	Mean: 9.5821 +/- 0.0039	Mean: 7.3439 +/- 0.0059
Std Dev: 0.2002 +/- 0.0036	Std Dev: 0.2387 +/- 0.0027	Std Dev: 0.1916 +/- 0.0042



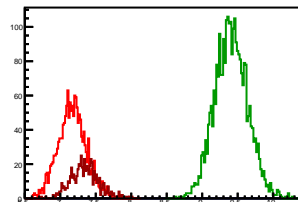
### Cycle 6, PosHel

Entries: 1044	Entries: 2701	Entries: 1632
Mean: 7.1993 +/- 0.0061	Mean: 9.3000 +/- 0.0043	Mean: 7.1510 +/- 0.0047
Std Dev: 0.1959 +/- 0.0043	Std Dev: 0.2215 +/- 0.0030	Std Dev: 0.1892 +/- 0.0033



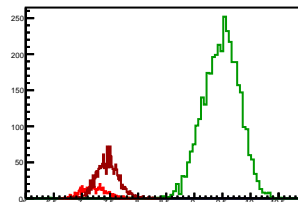
### Cycle 7, PosHel

Entries: 1621	Entries: 2916	Entries: 583
Mean: 7.1700 +/- 0.0050	Mean: 9.4088 +/- 0.0043	Mean: 7.3468 +/- 0.0082
Std Dev: 0.2008 +/- 0.0035	Std Dev: 0.2313 +/- 0.0030	Std Dev: 0.1973 +/- 0.0058



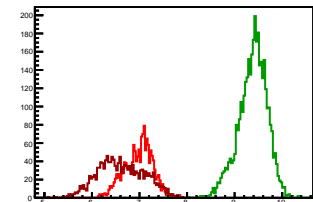
### Cycle 8, PosHel

Entries: 582	Entries: 3739	Entries: 1538
Mean: 7.2122 +/- 0.0087	Mean: 9.4742 +/- 0.0054	Mean: 7.4590 +/- 0.0051
Std Dev: 0.2098 +/- 0.0061	Std Dev: 0.3319 +/- 0.0038	Std Dev: 0.2002 +/- 0.0036



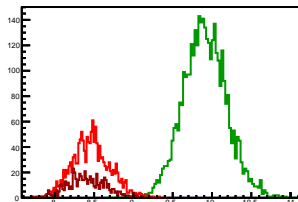
### Cycle 9, PosHel

Entries: 1544	Entries: 3682	Entries: 1521
Mean: 6.9777 +/- 0.0076	Mean: 9.3836 +/- 0.0050	Mean: 6.6161 +/- 0.0124
Std Dev: 0.3004 +/- 0.0054	Std Dev: 0.3019 +/- 0.0035	Std Dev: 0.4853 +/- 0.0088



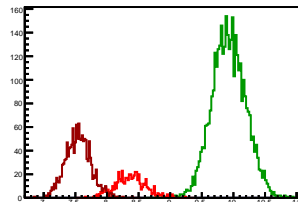
### Cycle 10, PosHel

Entries: 1516	Entries: 3762	Entries: 583
Mean: 8.4644 +/- 0.0062	Mean: 9.9096 +/- 0.0045	Mean: 8.4054 +/- 0.0101
Std Dev: 0.2402 +/- 0.0044	Std Dev: 0.2769 +/- 0.0032	Std Dev: 0.2431 +/- 0.0071



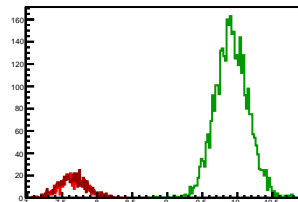
### Cycle 11, PosHel

Entries: 586	Entries: 3748	Entries: 1434
Mean: 8.3700 +/- 0.0101	Mean: 9.9273 +/- 0.0044	Mean: 7.5460 +/- 0.0053
Std Dev: 0.2438 +/- 0.0071	Std Dev: 0.2676 +/- 0.0031	Std Dev: 0.1996 +/- 0.0037



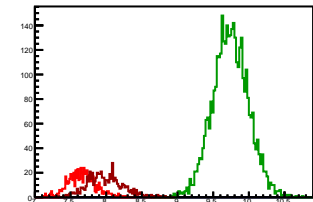
### Cycle 12, PosHel

Entries: 614	Entries: 3738	Entries: 670
Mean: 7.6662 +/- 0.0077	Mean: 9.9167 +/- 0.0039	Mean: 7.6483 +/- 0.0077
Std Dev: 0.1919 +/- 0.0055	Std Dev: 0.2363 +/- 0.0027	Std Dev: 0.2004 +/- 0.0055



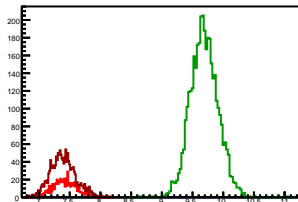
### Cycle 13, PosHel

Entries: 657	Entries: 3754	Entries: 610
Mean: 7.6590 +/- 0.0077	Mean: 9.7428 +/- 0.0041	Mean: 7.9840 +/- 0.0100
Std Dev: 0.1975 +/- 0.0054	Std Dev: 0.2512 +/- 0.0029	Std Dev: 0.2460 +/- 0.0070



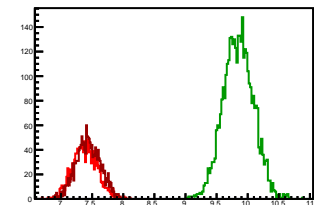
### Cycle 14, PosHel

Entries: 637	Entries: 3735	Entries: 1513
Mean: 7.4209 +/- 0.0077	Mean: 9.6899 +/- 0.0037	Mean: 7.3946 +/- 0.0052
Std Dev: 0.1941 +/- 0.0054	Std Dev: 0.2237 +/- 0.0026	Std Dev: 0.2033 +/- 0.0037



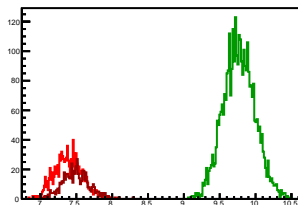
## Cycle 1, NegHel

Entries: 1363	Entries: 3725	Entries: 1615
Mean: 7.3857 +/- 0.0054	Mean: 9.8486 +/- 0.0040	Mean: 7.4382 +/- 0.0049
Std Dev: 0.1991 +/- 0.0038	Std Dev: 0.2443 +/- 0.0028	Std Dev: 0.1966 +/- 0.0035



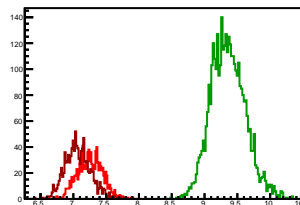
## Cycle 2, NegHel

Entries: 1040	Entries: 3438	Entries: 556
Mean: 7.3894 +/- 0.0059	Mean: 9.7699 +/- 0.0038	Mean: 7.4956 +/- 0.0079
Std Dev: 0.1901 +/- 0.0042	Std Dev: 0.2215 +/- 0.0027	Std Dev: 0.1870 +/- 0.0056



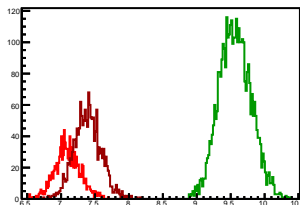
## Cycle 3, NegHel

Entries: 1026	Entries: 3754	Entries: 1083
Mean: 7.2550 +/- 0.0059	Mean: 9.3581 +/- 0.0043	Mean: 7.0688 +/- 0.0060
Std Dev: 0.1890 +/- 0.0042	Std Dev: 0.2622 +/- 0.0030	Std Dev: 0.1963 +/- 0.0042



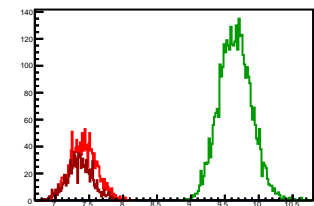
## Cycle 4, NegHel

Entries: 1065	Entries: 3721	Entries: 1592
Mean: 7.0964 +/- 0.0058	Mean: 9.5651 +/- 0.0039	Mean: 7.3890 +/- 0.0049
Std Dev: 0.1895 +/- 0.0041	Std Dev: 0.2359 +/- 0.0027	Std Dev: 0.1974 +/- 0.0035



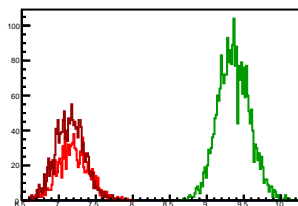
## Cycle 5, NegHel

Entries: 1583	Entries: 3777	Entries: 1052
Mean: 7.4179 +/- 0.0050	Mean: 9.6523 +/- 0.0039	Mean: 7.3579 +/- 0.0059
Std Dev: 0.1984 +/- 0.0035	Std Dev: 0.2371 +/- 0.0027	Std Dev: 0.1911 +/- 0.0042



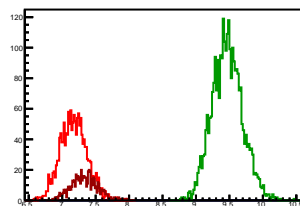
## Cycle 6, NegHel

Entries: 1044	Entries: 2701	Entries: 1632
Mean: 7.2013 +/- 0.0063	Mean: 9.3646 +/- 0.0041	Mean: 7.1506 +/- 0.0048
Std Dev: 0.2051 +/- 0.0045	Std Dev: 0.2156 +/- 0.0029	Std Dev: 0.1941 +/- 0.0034



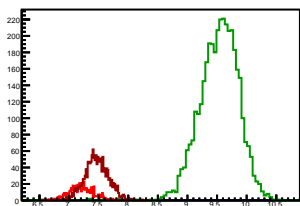
## Cycle 7, NegHel

Entries: 1621	Entries: 2916	Entries: 583
Mean: 7.1738 +/- 0.0050	Mean: 9.4683 +/- 0.0042	Mean: 7.3316 +/- 0.0080
Std Dev: 0.2005 +/- 0.0035	Std Dev: 0.2280 +/- 0.0030	Std Dev: 0.1921 +/- 0.0056



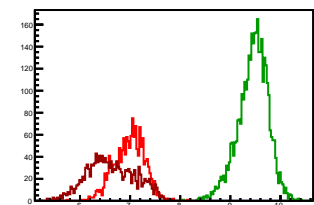
## Cycle 8, NegHel

Entries: 582	Entries: 3739	Entries: 1538
Mean: 7.2108 +/- 0.0084	Mean: 9.5329 +/- 0.0054	Mean: 7.4680 +/- 0.0051
Std Dev: 0.2037 +/- 0.0060	Std Dev: 0.3307 +/- 0.0038	Std Dev: 0.1982 +/- 0.0036



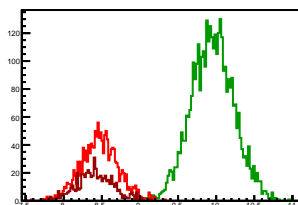
## Cycle 9, NegHel

Entries: 1544	Entries: 3682	Entries: 1521
Mean: 6.9837 +/- 0.0077	Mean: 9.4517 +/- 0.0050	Mean: 6.6207 +/- 0.0123
Std Dev: 0.3019 +/- 0.0054	Std Dev: 0.3014 +/- 0.0035	Std Dev: 0.4778 +/- 0.0087



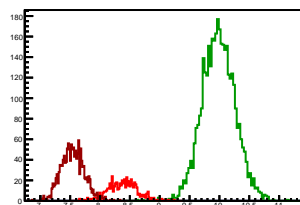
## Cycle 10, NegHel

Entries: 1516	Entries: 3762	Entries: 583
Mean: 8.4661 +/- 0.0063	Mean: 9.9526 +/- 0.0045	Mean: 8.4099 +/- 0.0101
Std Dev: 0.2434 +/- 0.0044	Std Dev: 0.2790 +/- 0.0032	Std Dev: 0.2442 +/- 0.0072



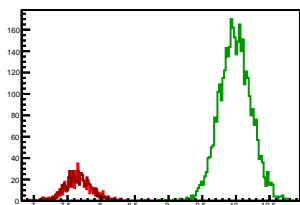
## Cycle 11, NegHel

Entries: 596	Entries: 3748	Entries: 1434
Mean: 8.3829 +/- 0.0103	Mean: 9.9861 +/- 0.0045	Mean: 7.5440 +/- 0.0051
Std Dev: 0.2487 +/- 0.0073	Std Dev: 0.2759 +/- 0.0032	Std Dev: 0.1944 +/- 0.0036



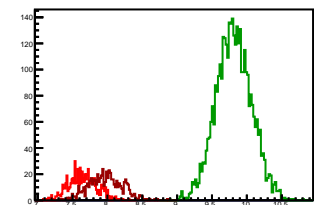
## Cycle 12, NegHel

Entries: 614	Entries: 3738	Entries: 670
Mean: 7.6805 +/- 0.0083	Mean: 9.9879 +/- 0.0039	Mean: 7.6577 +/- 0.0077
Std Dev: 0.2050 +/- 0.0058	Std Dev: 0.2381 +/- 0.0028	Std Dev: 0.1983 +/- 0.0054



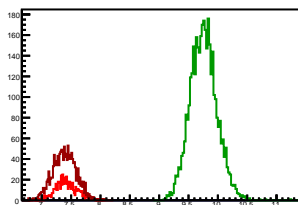
## Cycle 13, NegHel

Entries: 657	Entries: 3754	Entries: 610
Mean: 7.6475 +/- 0.0079	Mean: 9.8119 +/- 0.0041	Mean: 7.9752 +/- 0.0097
Std Dev: 0.2019 +/- 0.0056	Std Dev: 0.2538 +/- 0.0029	Std Dev: 0.2400 +/- 0.0069



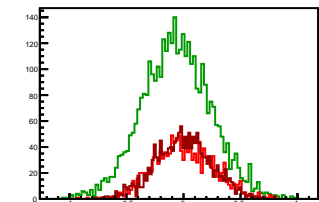
## Cycle 14, NegHel

Entries: 637	Entries: 3735	Entries: 1513
Mean: 7.4224 +/- 0.0074	Mean: 9.7574 +/- 0.0037	Mean: 7.3881 +/- 0.0051
Std Dev: 0.1874 +/- 0.0052	Std Dev: 0.2287 +/- 0.0026	Std Dev: 0.1972 +/- 0.0036



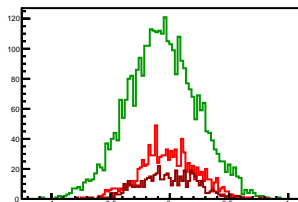
### Cycle 1, Diffs

Entries: 1363	Entries: 3725	Entries: 1615
Mean: -0.0002 +/- 0.0071	Mean: -0.0615 +/- 0.0050	Mean: -0.0036 +/- 0.0061
Std Dev: 0.2618 +/- 0.0050	Std Dev: 0.3022 +/- 0.0035	Std Dev: 0.2451 +/- 0.0043



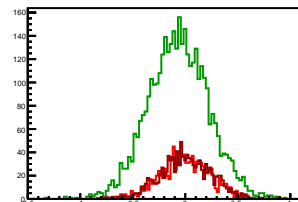
### Cycle 2, Diffs

Entries: 1040	Entries: 3438	Entries: 556
Mean: -0.0084 +/- 0.0075	Mean: -0.0647 +/- 0.0050	Mean: -0.0108 +/- 0.0103
Std Dev: 0.2409 +/- 0.0053	Std Dev: 0.2954 +/- 0.0036	Std Dev: 0.2434 +/- 0.0073



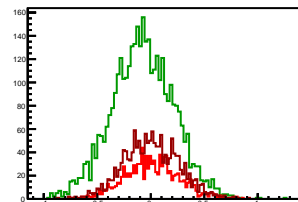
### Cycle 3, Diffs

Entries: 1026	Entries: 3754	Entries: 1083
Mean: -0.0013 +/- 0.0077	Mean: -0.0646 +/- 0.0047	Mean: 0.0038 +/- 0.0073
Std Dev: 0.2458 +/- 0.0054	Std Dev: 0.2878 +/- 0.0033	Std Dev: 0.2392 +/- 0.0051



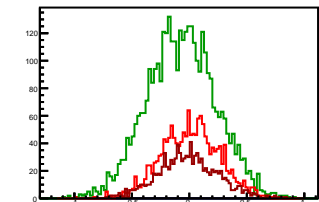
### Cycle 4, Diffs

Entries: 1065	Entries: 3721	Entries: 1592
Mean: 0.0096 +/- 0.0078	Mean: -0.0771 +/- 0.0048	Mean: 0.0039 +/- 0.0065
Std Dev: 0.2534 +/- 0.0055	Std Dev: 0.2901 +/- 0.0034	Std Dev: 0.2594 +/- 0.0046



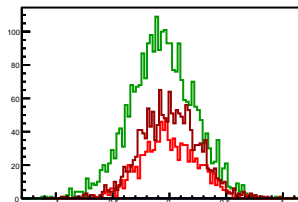
### Cycle 5, Diffs

Entries: 1583	Entries: 3777	Entries: 1052
Mean: 0.0085 +/- 0.0064	Mean: -0.0701 +/- 0.0049	Mean: -0.0140 +/- 0.0080
Std Dev: 0.2535 +/- 0.0045	Std Dev: 0.2981 +/- 0.0034	Std Dev: 0.2589 +/- 0.0056



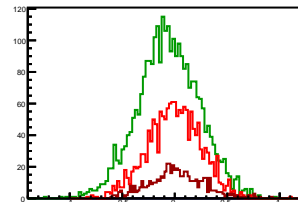
### Cycle 6, Diffs

Entries: 1044	Entries: 2701	Entries: 1632
Mean: -0.0020 +/- 0.0077	Mean: -0.0646 +/- 0.0055	Mean: 0.0003 +/- 0.0062
Std Dev: 0.2497 +/- 0.0055	Std Dev: 0.2841 +/- 0.0039	Std Dev: 0.2520 +/- 0.0044



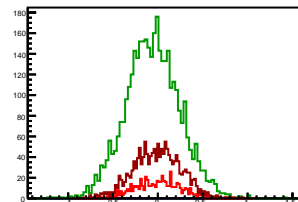
### Cycle 7, Diffs

Entries: 1621	Entries: 2916	Entries: 583
Mean: -0.0038 +/- 0.0063	Mean: -0.0594 +/- 0.0054	Mean: 0.0151 +/- 0.0108
Std Dev: 0.2551 +/- 0.0045	Std Dev: 0.2933 +/- 0.0038	Std Dev: 0.2606 +/- 0.0076



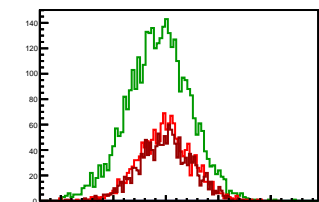
### Cycle 8, Diffs

Entries: 582	Entries: 3739	Entries: 1538
Mean: 0.0014 +/- 0.0105	Mean: -0.0586 +/- 0.0049	Mean: -0.0090 +/- 0.0067
Std Dev: 0.2535 +/- 0.0074	Std Dev: 0.3021 +/- 0.0035	Std Dev: 0.2624 +/- 0.0047



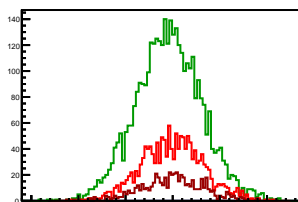
### Cycle 9, Diffs

Entries: 1544	Entries: 3682	Entries: 1521
Mean: -0.0060 +/- 0.0064	Mean: -0.0681 +/- 0.0049	Mean: -0.0046 +/- 0.0064
Std Dev: 0.2526 +/- 0.0045	Std Dev: 0.2980 +/- 0.0035	Std Dev: 0.2509 +/- 0.0045



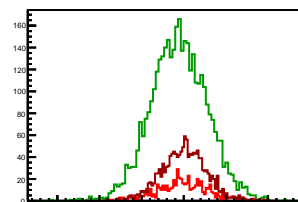
### Cycle 10, Diffs

Entries: 1516	Entries: 3762	Entries: 583
Mean: -0.0017 +/- 0.0084	Mean: -0.0430 +/- 0.0057	Mean: -0.0044 +/- 0.0138
Std Dev: 0.3283 +/- 0.0060	Std Dev: 0.3484 +/- 0.0040	Std Dev: 0.3332 +/- 0.0098



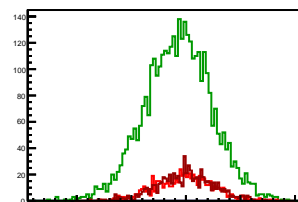
### Cycle 11, Diffs

Entries: 596	Entries: 3748	Entries: 1434
Mean: -0.0129 +/- 0.0126	Mean: -0.0588 +/- 0.0054	Mean: 0.0020 +/- 0.0069
Std Dev: 0.3050 +/- 0.0089	Std Dev: 0.3326 +/- 0.0038	Std Dev: 0.2622 +/- 0.0049



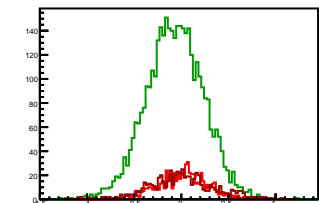
### Cycle 12, Diffs

Entries: 614	Entries: 3738	Entries: 670
Mean: -0.0143 +/- 0.0107	Mean: -0.0712 +/- 0.0050	Mean: -0.0094 +/- 0.0100
Std Dev: 0.2648 +/- 0.0076	Std Dev: 0.3070 +/- 0.0036	Std Dev: 0.2591 +/- 0.0071



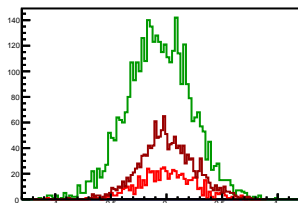
### Cycle 13, Diffs

Entries: 657	Entries: 3754	Entries: 610
Mean: 0.0115 +/- 0.0102	Mean: -0.0690 +/- 0.0050	Mean: 0.0088 +/- 0.0138
Std Dev: 0.2619 +/- 0.0072	Std Dev: 0.3036 +/- 0.0035	Std Dev: 0.3402 +/- 0.0097



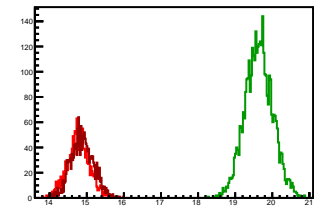
### Cycle 14, Diffs

Entries: 637	Entries: 3735	Entries: 1513
Mean: -0.0015 +/- 0.0099	Mean: -0.0675 +/- 0.0047	Mean: 0.0065 +/- 0.0063
Std Dev: 0.2496 +/- 0.0070	Std Dev: 0.2896 +/- 0.0034	Std Dev: 0.2461 +/- 0.0045



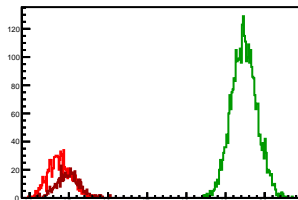
## Cycle 1, Sums

Entries: 1363	Entries: 3725	Entries: 1615
Mean: 14.7711 +/- 0.0082	Mean: 19.6356 +/- 0.0062	Mean: 14.8729 +/- 0.0076
Std Dev: 0.3032 +/- 0.0058	Std Dev: 0.3761 +/- 0.0044	Std Dev: 0.3063 +/- 0.0054



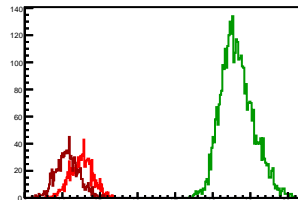
## Cycle 2, Sums

Entries: 1040	Entries: 3438	Entries: 556
Mean: 14.7704 +/- 0.0090	Mean: 19.4751 +/- 0.0056	Mean: 14.9803 +/- 0.0126
Std Dev: 0.2918 +/- 0.0064	Std Dev: 0.3271 +/- 0.0039	Std Dev: 0.2973 +/- 0.0089



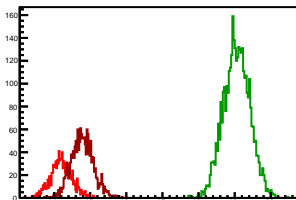
## Cycle 3, Sums

Entries: 1026	Entries: 3754	Entries: 1083
Mean: 14.5088 +/- 0.0093	Mean: 18.6516 +/- 0.0071	Mean: 14.1414 +/- 0.0094
Std Dev: 0.2993 +/- 0.0066	Std Dev: 0.4360 +/- 0.0050	Std Dev: 0.3092 +/- 0.0066



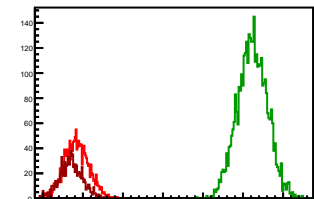
## Cycle 4, Sums

Entries: 1065	Entries: 3721	Entries: 1592
Mean: 14.2024 +/- 0.0090	Mean: 19.0530 +/- 0.0060	Mean: 14.7820 +/- 0.0077
Std Dev: 0.2922 +/- 0.0063	Std Dev: 0.3657 +/- 0.0042	Std Dev: 0.3061 +/- 0.0054



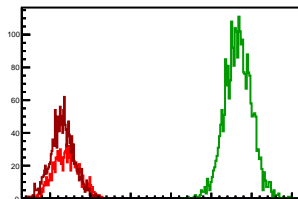
## Cycle 5, Sums

Entries: 1583	Entries: 3777	Entries: 1052
Mean: 14.8443 +/- 0.0077	Mean: 19.2344 +/- 0.0060	Mean: 14.7018 +/- 0.0087
Std Dev: 0.3076 +/- 0.0055	Std Dev: 0.3708 +/- 0.0043	Std Dev: 0.2818 +/- 0.0061



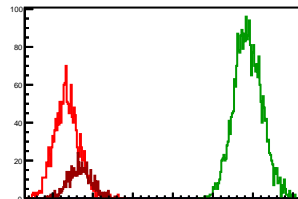
## Cycle 6, Sums

Entries: 1044	Entries: 2701	Entries: 1632
Mean: 14.4006 +/- 0.0097	Mean: 18.6646 +/- 0.0064	Mean: 14.3016 +/- 0.0072
Std Dev: 0.3138 +/- 0.0069	Std Dev: 0.3322 +/- 0.0045	Std Dev: 0.2889 +/- 0.0051



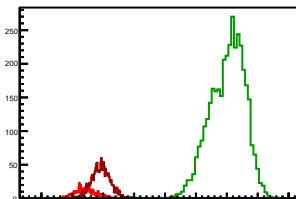
## Cycle 7, Sums

Entries: 1621	Entries: 2916	Entries: 583
Mean: 14.3438 +/- 0.0077	Mean: 18.8771 +/- 0.0065	Mean: 14.6784 +/- 0.0120
Std Dev: 0.3097 +/- 0.0054	Std Dev: 0.3534 +/- 0.0046	Std Dev: 0.2894 +/- 0.0085



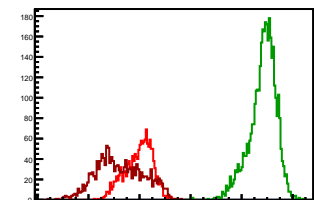
## Cycle 8, Sums

Entries: 582	Entries: 3739	Entries: 1538
Mean: 14.4231 +/- 0.0135	Mean: 19.0071 +/- 0.0096	Mean: 14.9271 +/- 0.0076
Std Dev: 0.3266 +/- 0.0096	Std Dev: 0.5897 +/- 0.0068	Std Dev: 0.2997 +/- 0.0054



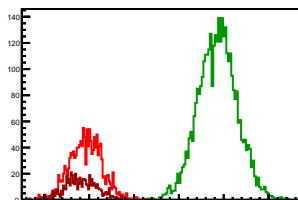
## Cycle 9, Sums

Entries: 1544	Entries: 3682	Entries: 1521
Mean: 13.9614 +/- 0.0139	Mean: 18.8352 +/- 0.0086	Mean: 13.2368 +/- 0.0238
Std Dev: 0.5468 +/- 0.0098	Std Dev: 0.5246 +/- 0.0061	Std Dev: 0.9298 +/- 0.0169



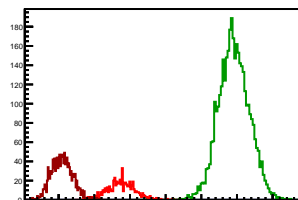
## Cycle 10, Sums

Entries: 1516	Entries: 3762	Entries: 583
Mean: 16.9306 +/- 0.0091	Mean: 19.8622 +/- 0.0071	Mean: 16.8153 +/- 0.0147
Std Dev: 0.3550 +/- 0.0064	Std Dev: 0.4331 +/- 0.0050	Std Dev: 0.3556 +/- 0.0104



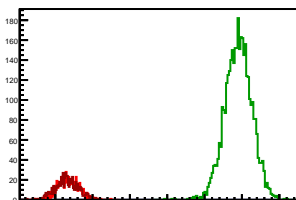
## Cycle 11, Sums

Entries: 596	Entries: 3748	Entries: 1434
Mean: 16.7529 +/- 0.0160	Mean: 19.9135 +/- 0.0070	Mean: 15.0899 +/- 0.0078
Std Dev: 0.3868 +/- 0.0113	Std Dev: 0.4299 +/- 0.0050	Std Dev: 0.2942 +/- 0.0055



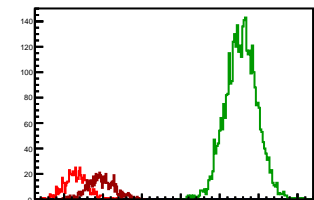
## Cycle 12, Sums

Entries: 614	Entries: 3738	Entries: 670
Mean: 15.3467 +/- 0.0119	Mean: 19.9046 +/- 0.0059	Mean: 15.3059 +/- 0.0117
Std Dev: 0.2958 +/- 0.0084	Std Dev: 0.3618 +/- 0.0042	Std Dev: 0.3031 +/- 0.0083



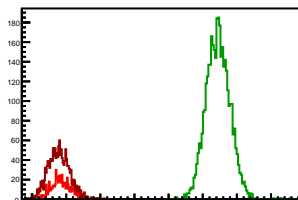
## Cycle 13, Sums

Entries: 657	Entries: 3754	Entries: 610
Mean: 15.3065 +/- 0.0118	Mean: 19.5547 +/- 0.0066	Mean: 15.9592 +/- 0.0141
Std Dev: 0.3016 +/- 0.0083	Std Dev: 0.4035 +/- 0.0047	Std Dev: 0.3472 +/- 0.0099



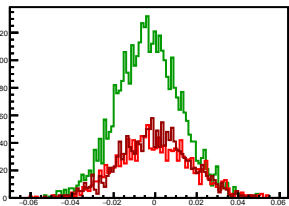
## Cycle 14, Sums

Entries: 637	Entries: 3735	Entries: 1513
Mean: 14.8433 +/- 0.0114	Mean: 19.4472 +/- 0.0057	Mean: 14.7826 +/- 0.0081
Std Dev: 0.2886 +/- 0.0081	Std Dev: 0.3477 +/- 0.0040	Std Dev: 0.3160 +/- 0.0057



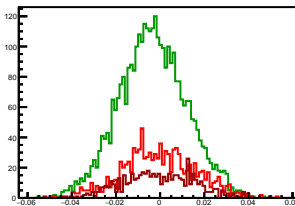
## Cycle 1, Asyms

Entries: 1363	Entries: 3725	Entries: 1615
Mean: -0.0000 +/- 0.0005	Mean: -0.0031 +/- 0.0003	Mean: -0.0002 +/- 0.0004
Std Dev: 0.0177 +/- 0.0003	Std Dev: 0.0154 +/- 0.0002	Std Dev: 0.0165 +/- 0.0003



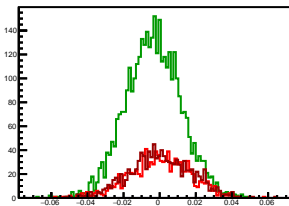
## Cycle 2, Asyms

Entries: 1040	Entries: 3438	Entries: 556
Mean: -0.0006 +/- 0.0005	Mean: -0.0033 +/- 0.0003	Mean: -0.0007 +/- 0.0007
Std Dev: 0.0163 +/- 0.0004	Std Dev: 0.0152 +/- 0.0002	Std Dev: 0.0162 +/- 0.0005



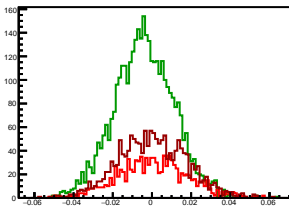
## Cycle 3, Asyms

Entries: 1026	Entries: 3754	Entries: 1083
Mean: -0.0001 +/- 0.0005	Mean: -0.0035 +/- 0.0003	Mean: 0.0003 +/- 0.0005
Std Dev: 0.0169 +/- 0.0004	Std Dev: 0.0154 +/- 0.0002	Std Dev: 0.0169 +/- 0.0004



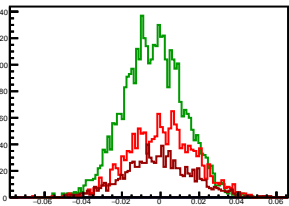
## Cycle 4, Asyms

Entries: 1065	Entries: 3721	Entries: 1592
Mean: 0.0007 +/- 0.0005	Mean: -0.0040 +/- 0.0002	Mean: 0.0003 +/- 0.0004
Std Dev: 0.0178 +/- 0.0004	Std Dev: 0.0152 +/- 0.0002	Std Dev: 0.0175 +/- 0.0003



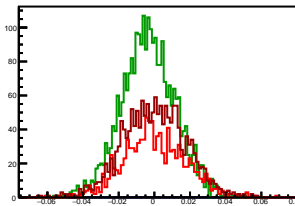
## Cycle 5, Asyms

Entries: 1583	Entries: 3777	Entries: 1052
Mean: 0.0006 +/- 0.0004	Mean: -0.0037 +/- 0.0003	Mean: -0.0010 +/- 0.0005
Std Dev: 0.0171 +/- 0.0003	Std Dev: 0.0155 +/- 0.0002	Std Dev: 0.0176 +/- 0.0004



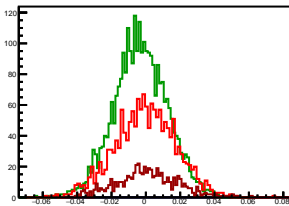
## Cycle 6, Asyms

Entries: 1044	Entries: 2701	Entries: 1632
Mean: -0.0001 +/- 0.0005	Mean: -0.0035 +/- 0.0003	Mean: 0.0000 +/- 0.0004
Std Dev: 0.0173 +/- 0.0004	Std Dev: 0.0152 +/- 0.0002	Std Dev: 0.0176 +/- 0.0004



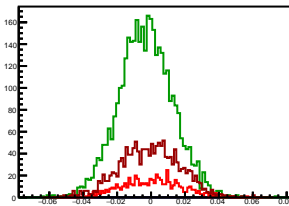
## Cycle 7, Asyms

Entries: 1621	Entries: 2916	Entries: 583
Mean: -0.0003 +/- 0.0004	Mean: -0.0032 +/- 0.0003	Mean: 0.0010 +/- 0.0007
Std Dev: 0.0178 +/- 0.0003	Std Dev: 0.0155 +/- 0.0002	Std Dev: 0.0177 +/- 0.0005



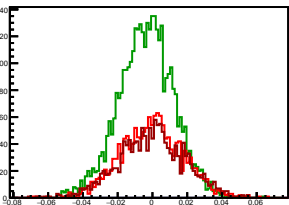
## Cycle 8, Asyms

Entries: 582	Entries: 3739	Entries: 1538
Mean: 0.0001 +/- 0.0007	Mean: -0.0031 +/- 0.0003	Mean: -0.0006 +/- 0.0004
Std Dev: 0.0175 +/- 0.0005	Std Dev: 0.0159 +/- 0.0002	Std Dev: 0.0175 +/- 0.0003



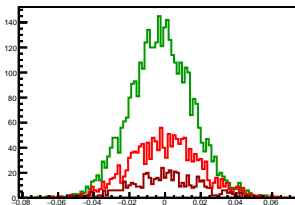
## Cycle 9, Asyms

Entries: 1544	Entries: 3682	Entries: 1521
Mean: -0.0004 +/- 0.0005	Mean: -0.0036 +/- 0.0003	Mean: -0.0004 +/- 0.0005
Std Dev: 0.0181 +/- 0.0003	Std Dev: 0.0158 +/- 0.0002	Std Dev: 0.0190 +/- 0.0003



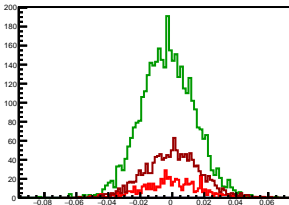
## Cycle 10, Asyms

Entries: 1516	Entries: 3762	Entries: 583
Mean: -0.0001 +/- 0.0005	Mean: -0.0022 +/- 0.0003	Mean: -0.0003 +/- 0.0008
Std Dev: 0.0194 +/- 0.0004	Std Dev: 0.0175 +/- 0.0002	Std Dev: 0.0198 +/- 0.0006



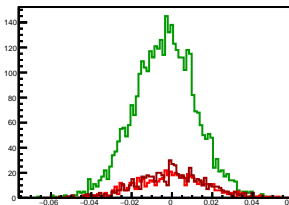
## Cycle 11, Asyms

Entries: 596	Entries: 3748	Entries: 1434
Mean: -0.0008 +/- 0.0008	Mean: -0.0029 +/- 0.0003	Mean: 0.0001 +/- 0.0005
Std Dev: 0.0182 +/- 0.0005	Std Dev: 0.0167 +/- 0.0002	Std Dev: 0.0173 +/- 0.0003



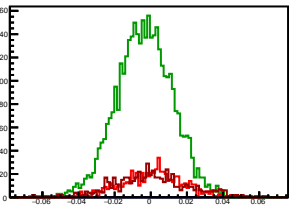
## Cycle 12, Asyms

Entries: 614	Entries: 3738	Entries: 670
Mean: -0.0009 +/- 0.0007	Mean: -0.0036 +/- 0.0003	Mean: -0.0006 +/- 0.0007
Std Dev: 0.0172 +/- 0.0005	Std Dev: 0.0154 +/- 0.0002	Std Dev: 0.0169 +/- 0.0005



## Cycle 13, Asyms

Entries: 657	Entries: 3754	Entries: 610
Mean: 0.0008 +/- 0.0007	Mean: -0.0035 +/- 0.0003	Mean: 0.0005 +/- 0.0009
Std Dev: 0.0171 +/- 0.0005	Std Dev: 0.0155 +/- 0.0002	Std Dev: 0.0212 +/- 0.0006



## Cycle 14, Asyms

Entries: 637	Entries: 3735	Entries: 1513
Mean: -0.0001 +/- 0.0007	Mean: -0.0035 +/- 0.0002	Mean: 0.0004 +/- 0.0004
Std Dev: 0.0168 +/- 0.0005	Std Dev: 0.0149 +/- 0.0002	Std Dev: 0.0166 +/- 0.0003

