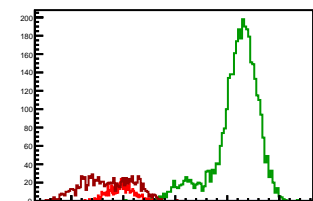


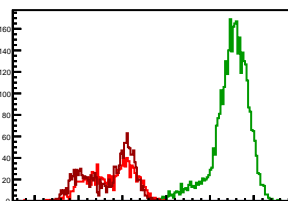
Cycle 1, PosHel

Entries: 566	Entries: 3794	Entries: 1085
Mean: 6.9583 +/- 0.0101	Mean: 9.1853 +/- 0.0069	Mean: 6.7104 +/- 0.0145
Std Dev: 0.2396 +/- 0.0071	Std Dev: 0.4275 +/- 0.0049	Std Dev: 0.4786 +/- 0.0103



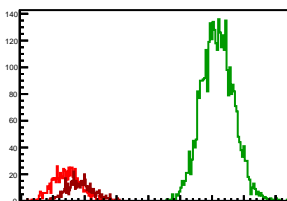
Cycle 2, PosHel

Entries: 1068	Entries: 3675	Entries: 1605
Mean: 6.7391 +/- 0.0157	Mean: 9.4820 +/- 0.0068	Mean: 6.6885 +/- 0.0135
Std Dev: 0.5134 +/- 0.0111	Std Dev: 0.4111 +/- 0.0048	Std Dev: 0.5423 +/- 0.0096



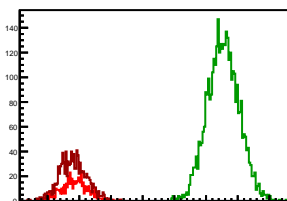
Cycle 3, PosHel

Entries: 704	Entries: 3711	Entries: 564
Mean: 7.2222 +/- 0.0081	Mean: 9.5875 +/- 0.0041	Mean: 7.4268 +/- 0.0088
Std Dev: 0.2150 +/- 0.0057	Std Dev: 0.2519 +/- 0.0029	Std Dev: 0.2088 +/- 0.0062



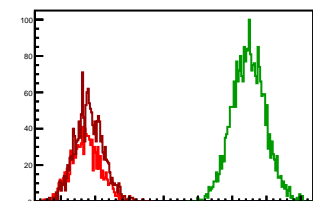
Cycle 4, PosHel

Entries: 569	Entries: 3784	Entries: 1062
Mean: 7.4328 +/- 0.0087	Mean: 9.7714 +/- 0.0041	Mean: 7.4022 +/- 0.0067
Std Dev: 0.2067 +/- 0.0061	Std Dev: 0.2501 +/- 0.0029	Std Dev: 0.2172 +/- 0.0047



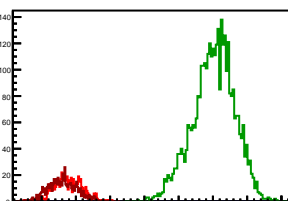
Cycle 5, PosHel

Entries: 1056	Entries: 2741	Entries: 1602
Mean: 7.3645 +/- 0.0065	Mean: 9.7389 +/- 0.0046	Mean: 7.4098 +/- 0.0052
Std Dev: 0.2097 +/- 0.0046	Std Dev: 0.2415 +/- 0.0033	Std Dev: 0.2077 +/- 0.0037



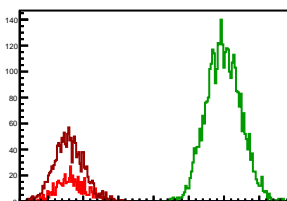
Cycle 6, PosHel

Entries: 566	Entries: 3672	Entries: 594
Mean: 7.3870 +/- 0.0086	Mean: 9.5097 +/- 0.0051	Mean: 7.3052 +/- 0.0086
Std Dev: 0.2045 +/- 0.0061	Std Dev: 0.3068 +/- 0.0036	Std Dev: 0.2085 +/- 0.0060



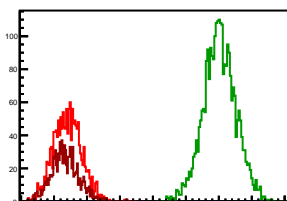
Cycle 7, PosHel

Entries: 583	Entries: 3739	Entries: 1576
Mean: 7.3390 +/- 0.0089	Mean: 9.4924 +/- 0.0040	Mean: 7.2995 +/- 0.0053
Std Dev: 0.2159 +/- 0.0063	Std Dev: 0.2442 +/- 0.0028	Std Dev: 0.2113 +/- 0.0038



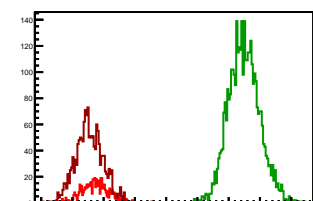
Cycle 8, PosHel

Entries: 1586	Entries: 2841	Entries: 1047
Mean: 7.2023 +/- 0.0053	Mean: 9.5124 +/- 0.0046	Mean: 7.1657 +/- 0.0063
Std Dev: 0.2092 +/- 0.0037	Std Dev: 0.2475 +/- 0.0033	Std Dev: 0.2054 +/- 0.0045



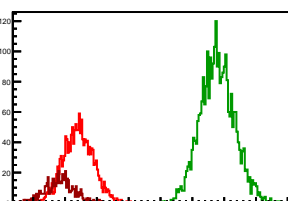
Cycle 9, PosHel

Entries: 576	Entries: 3713	Entries: 1594
Mean: 7.3662 +/- 0.0089	Mean: 9.7452 +/- 0.0041	Mean: 7.2729 +/- 0.0055
Std Dev: 0.2136 +/- 0.0063	Std Dev: 0.2479 +/- 0.0029	Std Dev: 0.2196 +/- 0.0039



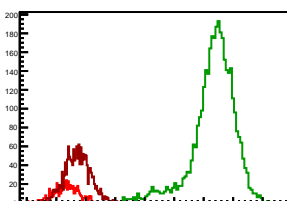
Cycle 10, PosHel

Entries: 1599	Entries: 2906	Entries: 556
Mean: 7.2099 +/- 0.0057	Mean: 9.3934 +/- 0.0050	Mean: 6.9209 +/- 0.0097
Std Dev: 0.2297 +/- 0.0041	Std Dev: 0.2684 +/- 0.0035	Std Dev: 0.2281 +/- 0.0068



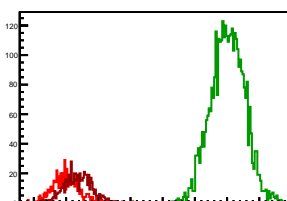
Cycle 11, PosHel

Entries: 587	Entries: 3687	Entries: 1643
Mean: 7.1708 +/- 0.0089	Mean: 9.6639 +/- 0.0061	Mean: 7.3624 +/- 0.0054
Std Dev: 0.2156 +/- 0.0063	Std Dev: 0.3731 +/- 0.0043	Std Dev: 0.2194 +/- 0.0038



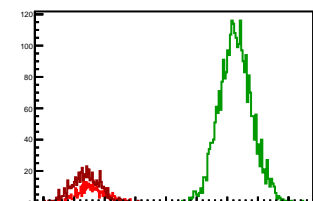
Cycle 12, PosHel

Entries: 572	Entries: 3723	Entries: 586
Mean: 6.9934 +/- 0.0087	Mean: 9.5112 +/- 0.0043	Mean: 7.1885 +/- 0.0089
Std Dev: 0.2088 +/- 0.0062	Std Dev: 0.2607 +/- 0.0030	Std Dev: 0.2160 +/- 0.0063



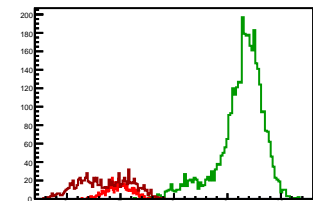
Cycle 13, PosHel

Entries: 388	Entries: 3045	Entries: 573
Mean: 7.2871 +/- 0.0116	Mean: 9.6359 +/- 0.0048	Mean: 7.1942 +/- 0.0096
Std Dev: 0.2283 +/- 0.0082	Std Dev: 0.2632 +/- 0.0034	Std Dev: 0.2288 +/- 0.0068



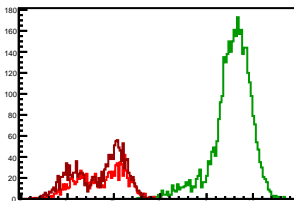
Cycle 1, NegHel

Entries: 566	Entries: 3794	Entries: 1085
Mean: 6.9724 +/- 0.0098	Mean: 9.2535 +/- 0.0070	Mean: 6.7036 +/- 0.0146
Std Dev: 0.2342 +/- 0.0070	Std Dev: 0.4323 +/- 0.0050	Std Dev: 0.4809 +/- 0.0103



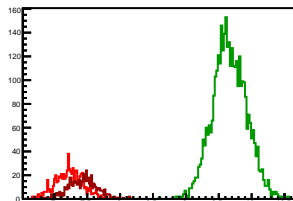
Cycle 2, NegHel

Entries: 1068	Entries: 3675	Entries: 1605
Mean: 6.7320 +/- 0.0156	Mean: 9.5535 +/- 0.0069	Mean: 6.6836 +/- 0.0134
Std Dev: 0.5104 +/- 0.0110	Std Dev: 0.4198 +/- 0.0049	Std Dev: 0.5365 +/- 0.0095



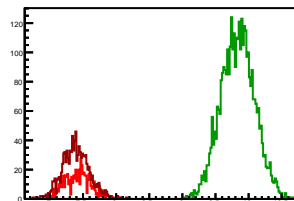
Cycle 3, NegHel

Entries: 704	Entries: 3711	Entries: 564
Mean: 7.2285 +/- 0.0079	Mean: 9.6660 +/- 0.0042	Mean: 7.4325 +/- 0.0089
Std Dev: 0.2103 +/- 0.0056	Std Dev: 0.2586 +/- 0.0030	Std Dev: 0.2121 +/- 0.0063



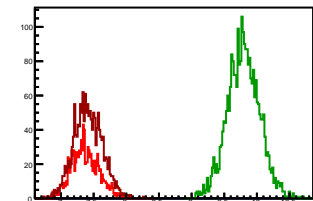
Cycle 4, NegHel

Entries: 569	Entries: 3784	Entries: 1062
Mean: 7.4265 +/- 0.0086	Mean: 9.8366 +/- 0.0041	Mean: 7.3929 +/- 0.0063
Std Dev: 0.2048 +/- 0.0061	Std Dev: 0.2532 +/- 0.0029	Std Dev: 0.2037 +/- 0.0044



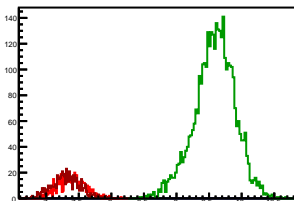
Cycle 5, NegHel

Entries: 1056	Entries: 2741	Entries: 1602
Mean: 7.3669 +/- 0.0065	Mean: 9.7928 +/- 0.0047	Mean: 7.4154 +/- 0.0054
Std Dev: 0.2128 +/- 0.0046	Std Dev: 0.2461 +/- 0.0033	Std Dev: 0.2159 +/- 0.0038



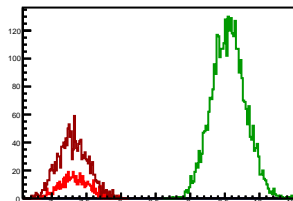
Cycle 6, NegHel

Entries: 566	Entries: 3672	Entries: 594
Mean: 7.3904 +/- 0.0089	Mean: 9.5833 +/- 0.0052	Mean: 7.3068 +/- 0.0089
Std Dev: 0.2107 +/- 0.0063	Std Dev: 0.3122 +/- 0.0036	Std Dev: 0.2160 +/- 0.0063



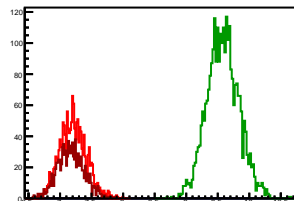
Cycle 7, NegHel

Entries: 583	Entries: 3739	Entries: 1576
Mean: 7.3373 +/- 0.0091	Mean: 9.5552 +/- 0.0040	Mean: 7.3031 +/- 0.0055
Std Dev: 0.2186 +/- 0.0064	Std Dev: 0.2445 +/- 0.0028	Std Dev: 0.2199 +/- 0.0039



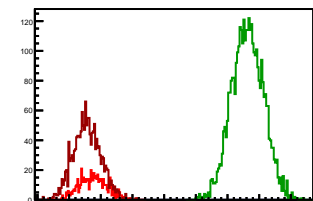
Cycle 8, NegHel

Entries: 1586	Entries: 2841	Entries: 1047
Mean: 7.2058 +/- 0.0053	Mean: 9.5810 +/- 0.0047	Mean: 7.1717 +/- 0.0065
Std Dev: 0.2115 +/- 0.0038	Std Dev: 0.2531 +/- 0.0034	Std Dev: 0.2090 +/- 0.0046



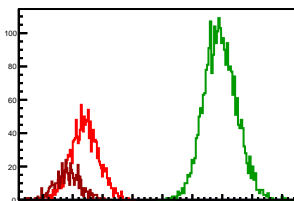
Cycle 9, NegHel

Entries: 576	Entries: 3713	Entries: 1594
Mean: 7.3834 +/- 0.0091	Mean: 9.8166 +/- 0.0041	Mean: 7.2814 +/- 0.0054
Std Dev: 0.2188 +/- 0.0064	Std Dev: 0.2506 +/- 0.0029	Std Dev: 0.2154 +/- 0.0038



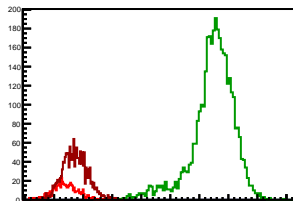
Cycle 10, NegHel

Entries: 1599	Entries: 2906	Entries: 556
Mean: 7.2046 +/- 0.0058	Mean: 9.4679 +/- 0.0051	Mean: 6.9190 +/- 0.0090
Std Dev: 0.2301 +/- 0.0041	Std Dev: 0.2724 +/- 0.0036	Std Dev: 0.2130 +/- 0.0064



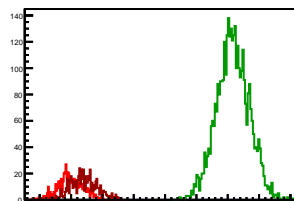
Cycle 11, NegHel

Entries: 587	Entries: 3687	Entries: 1643
Mean: 7.1873 +/- 0.0091	Mean: 9.7320 +/- 0.0061	Mean: 7.3603 +/- 0.0053
Std Dev: 0.2209 +/- 0.0064	Std Dev: 0.3727 +/- 0.0043	Std Dev: 0.2142 +/- 0.0037



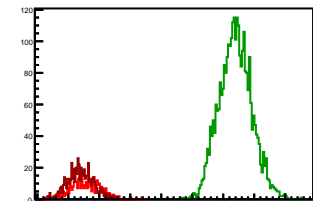
Cycle 12, NegHel

Entries: 572	Entries: 3723	Entries: 586
Mean: 6.9924 +/- 0.0084	Mean: 9.5813 +/- 0.0043	Mean: 7.2001 +/- 0.0090
Std Dev: 0.2006 +/- 0.0059	Std Dev: 0.2600 +/- 0.0030	Std Dev: 0.2186 +/- 0.0064



Cycle 13, NegHel

Entries: 388	Entries: 3045	Entries: 573
Mean: 7.2838 +/- 0.0117	Mean: 9.6987 +/- 0.0047	Mean: 7.1941 +/- 0.0089
Std Dev: 0.2301 +/- 0.0083	Std Dev: 0.2611 +/- 0.0033	Std Dev: 0.2122 +/- 0.0063

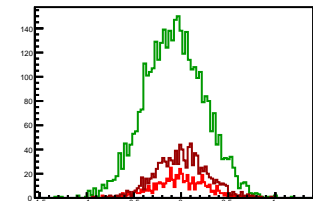


Cycle 1, Diffs

Entries: 566 Entries: 3794 Entries: 1085

Mean: -0.0141 +/- 0.0115 Mean: -0.0683 +/- 0.0052 Mean: 0.0068 +/- 0.0083

Std Dev: 0.2724 +/- 0.0081 Std Dev: 0.3206 +/- 0.0037 Std Dev: 0.2748 +/- 0.0059

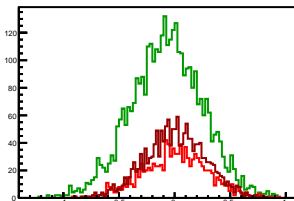


Cycle 2, Diffs

Entries: 1068 Entries: 3675 Entries: 1605

Mean: 0.0071 +/- 0.0089 Mean: -0.0715 +/- 0.0053 Mean: 0.0049 +/- 0.0068

Std Dev: 0.2911 +/- 0.0063 Std Dev: 0.3211 +/- 0.0037 Std Dev: 0.2704 +/- 0.0048

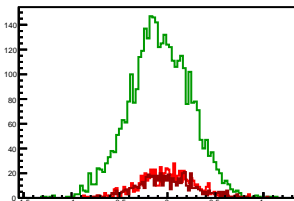


Cycle 3, Diffs

Entries: 704 Entries: 3711 Entries: 564

Mean: -0.0063 +/- 0.0108 Mean: -0.0785 +/- 0.0052 Mean: -0.0056 +/- 0.0124

Std Dev: 0.2861 +/- 0.0076 Std Dev: 0.3184 +/- 0.0037 Std Dev: 0.2937 +/- 0.0087

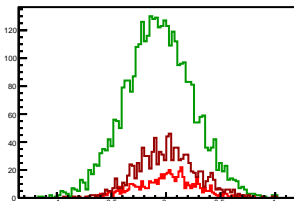


Cycle 4, Diffs

Entries: 569 Entries: 3784 Entries: 1062

Mean: 0.0063 +/- 0.0114 Mean: -0.0652 +/- 0.0051 Mean: 0.0093 +/- 0.0085

Std Dev: 0.2730 +/- 0.0081 Std Dev: 0.3121 +/- 0.0036 Std Dev: 0.2779 +/- 0.0060

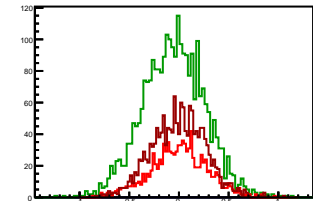


Cycle 5, Diffs

Entries: 1056 Entries: 2741 Entries: 1602

Mean: -0.0024 +/- 0.0088 Mean: -0.0539 +/- 0.0060 Mean: -0.0056 +/- 0.0068

Std Dev: 0.2871 +/- 0.0062 Std Dev: 0.3116 +/- 0.0042 Std Dev: 0.2713 +/- 0.0048

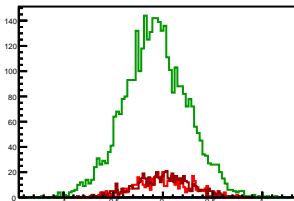


Cycle 6, Diffs

Entries: 566 Entries: 3672 Entries: 594

Mean: -0.0034 +/- 0.0117 Mean: -0.0736 +/- 0.0052 Mean: -0.0016 +/- 0.0115

Std Dev: 0.2785 +/- 0.0083 Std Dev: 0.3177 +/- 0.0037 Std Dev: 0.2812 +/- 0.0082

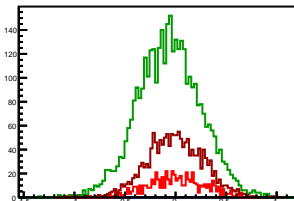


Cycle 7, Diffs

Entries: 583 Entries: 3739 Entries: 1576

Mean: 0.0017 +/- 0.0117 Mean: -0.0627 +/- 0.0051 Mean: -0.0036 +/- 0.0069

Std Dev: 0.2815 +/- 0.0082 Std Dev: 0.3118 +/- 0.0036 Std Dev: 0.2743 +/- 0.0049

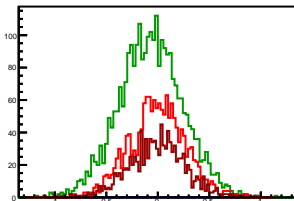


Cycle 8, Diffs

Entries: 1586 Entries: 2841 Entries: 1047

Mean: -0.0035 +/- 0.0070 Mean: -0.0686 +/- 0.0058 Mean: -0.0060 +/- 0.0083

Std Dev: 0.2786 +/- 0.0049 Std Dev: 0.3113 +/- 0.0041 Std Dev: 0.2695 +/- 0.0059

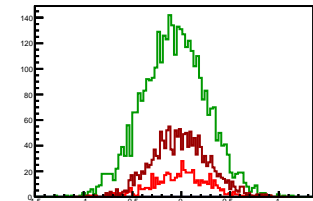


Cycle 9, Diffs

Entries: 576 Entries: 3713 Entries: 1594

Mean: -0.0172 +/- 0.0120 Mean: -0.0716 +/- 0.0053 Mean: -0.0085 +/- 0.0071

Std Dev: 0.2869 +/- 0.0085 Std Dev: 0.3250 +/- 0.0038 Std Dev: 0.2823 +/- 0.0050

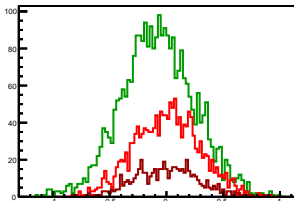


Cycle 10, Diffs

Entries: 1599 Entries: 2906 Entries: 556

Mean: 0.0054 +/- 0.0071 Mean: -0.0745 +/- 0.0060 Mean: 0.0019 +/- 0.0120

Std Dev: 0.2855 +/- 0.0050 Std Dev: 0.3212 +/- 0.0042 Std Dev: 0.2820 +/- 0.0085

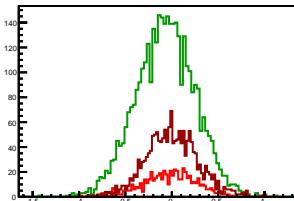


Cycle 11, Diffs

Entries: 587 Entries: 3687 Entries: 1643

Mean: -0.0165 +/- 0.0119 Mean: -0.0682 +/- 0.0052 Mean: 0.0021 +/- 0.0069

Std Dev: 0.2887 +/- 0.0084 Std Dev: 0.3179 +/- 0.0037 Std Dev: 0.2791 +/- 0.0049

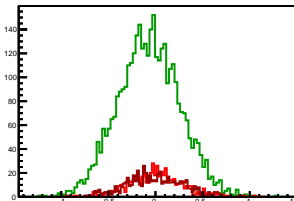


Cycle 12, Diffs

Entries: 572 Entries: 3723 Entries: 586

Mean: 0.0010 +/- 0.0118 Mean: -0.0700 +/- 0.0054 Mean: -0.0116 +/- 0.0122

Std Dev: 0.2829 +/- 0.0084 Std Dev: 0.3270 +/- 0.0038 Std Dev: 0.2965 +/- 0.0087

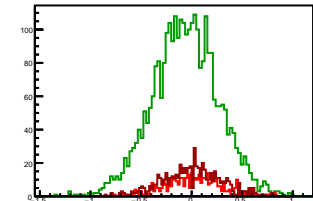


Cycle 13, Diffs

Entries: 388 Entries: 3045 Entries: 573

Mean: 0.0033 +/- 0.0135 Mean: -0.0628 +/- 0.0059 Mean: 0.0001 +/- 0.0121

Std Dev: 0.2668 +/- 0.0096 Std Dev: 0.3251 +/- 0.0042 Std Dev: 0.2899 +/- 0.0086

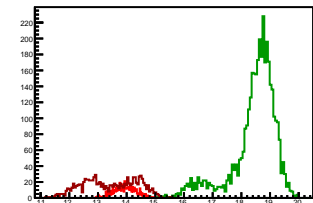


Cycle 1, Sums

Entries: 566 Entries: 3794 Entries: 1085

Mean: 13.9307 +/- 0.0163 Mean: 18.4388 +/- 0.0130 Mean: 13.4140 +/- 0.0279

Std Dev: 0.3877 +/- 0.0115 Std Dev: 0.7979 +/- 0.0092 Std Dev: 0.9194 +/- 0.0197

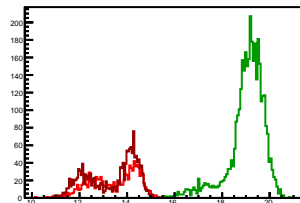


Cycle 2, Sums

Entries: 1068 Entries: 3675 Entries: 1605

Mean: 13.4711 +/- 0.0300 Mean: 19.0355 +/- 0.0125 Mean: 13.3720 +/- 0.0261

Std Dev: 0.9816 +/- 0.0212 Std Dev: 0.7664 +/- 0.0089 Std Dev: 1.0444 +/- 0.0184

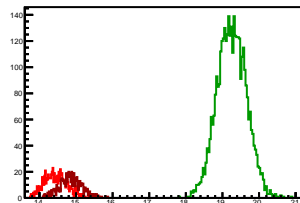


Cycle 3, Sums

Entries: 704 Entries: 3711 Entries: 564

Mean: 14.4507 +/- 0.0119 Mean: 19.2535 +/- 0.0066 Mean: 14.8593 +/- 0.0127

Std Dev: 0.3147 +/- 0.0084 Std Dev: 0.3991 +/- 0.0046 Std Dev: 0.3014 +/- 0.0089

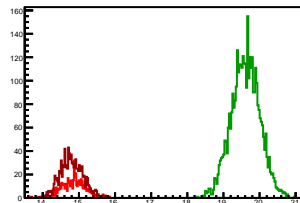


Cycle 4, Sums

Entries: 569 Entries: 3784 Entries: 1062

Mean: 14.8593 +/- 0.0129 Mean: 19.6080 +/- 0.0064 Mean: 14.7950 +/- 0.0097

Std Dev: 0.3079 +/- 0.0091 Std Dev: 0.3948 +/- 0.0045 Std Dev: 0.3164 +/- 0.0069

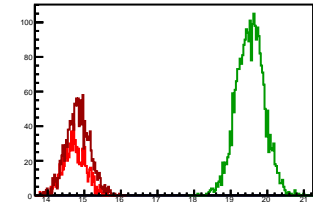


Cycle 5, Sums

Entries: 1056 Entries: 2741 Entries: 1602

Mean: 14.7314 +/- 0.0095 Mean: 19.5317 +/- 0.0072 Mean: 14.8253 +/- 0.0081

Std Dev: 0.3099 +/- 0.0067 Std Dev: 0.3751 +/- 0.0051 Std Dev: 0.3255 +/- 0.0058

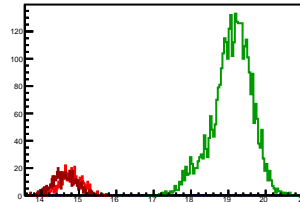


Cycle 6, Sums

Entries: 566 Entries: 3672 Entries: 594

Mean: 14.7774 +/- 0.0129 Mean: 19.0930 +/- 0.0088 Mean: 14.6120 +/- 0.0131

Std Dev: 0.3080 +/- 0.0092 Std Dev: 0.5313 +/- 0.0062 Std Dev: 0.3181 +/- 0.0092

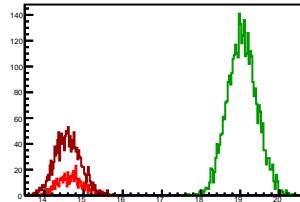


Cycle 7, Sums

Entries: 583 Entries: 3739 Entries: 1576

Mean: 14.6763 +/- 0.0137 Mean: 19.0476 +/- 0.0062 Mean: 14.6027 +/- 0.0084

Std Dev: 0.3310 +/- 0.0097 Std Dev: 0.3763 +/- 0.0044 Std Dev: 0.3329 +/- 0.0059

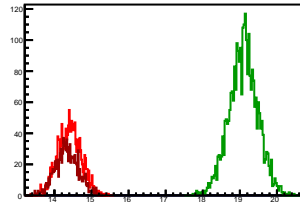


Cycle 8, Sums

Entries: 1586 Entries: 2841 Entries: 1047

Mean: 14.4081 +/- 0.0079 Mean: 19.0934 +/- 0.0074 Mean: 14.3374 +/- 0.0097

Std Dev: 0.3152 +/- 0.0056 Std Dev: 0.3920 +/- 0.0052 Std Dev: 0.3148 +/- 0.0069

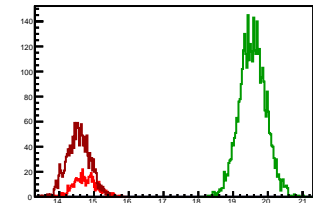


Cycle 9, Sums

Entries: 576 Entries: 3713 Entries: 1594

Mean: 14.7496 +/- 0.0135 Mean: 19.5621 +/- 0.0062 Mean: 14.5543 +/- 0.0083

Std Dev: 0.3236 +/- 0.0095 Std Dev: 0.3781 +/- 0.0044 Std Dev: 0.3310 +/- 0.0059

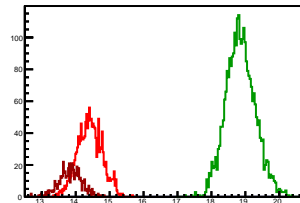


Cycle 10, Sums

Entries: 1599 Entries: 2906 Entries: 556

Mean: 14.4145 +/- 0.0090 Mean: 18.8613 +/- 0.0081 Mean: 13.8399 +/- 0.0144

Std Dev: 0.3604 +/- 0.0064 Std Dev: 0.4350 +/- 0.0057 Std Dev: 0.3395 +/- 0.0102

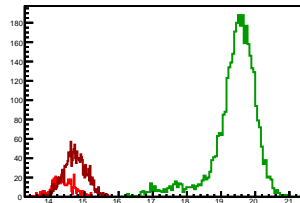


Cycle 11, Sums

Entries: 587 Entries: 3687 Entries: 1643

Mean: 14.3581 +/- 0.0135 Mean: 19.3959 +/- 0.0111 Mean: 14.7227 +/- 0.0082

Std Dev: 0.3274 +/- 0.0096 Std Dev: 0.6747 +/- 0.0079 Std Dev: 0.3319 +/- 0.0058

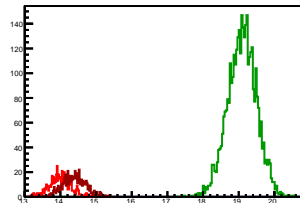


Cycle 12, Sums

Entries: 572 Entries: 3723 Entries: 586

Mean: 13.9858 +/- 0.0124 Mean: 19.0925 +/- 0.0066 Mean: 14.3885 +/- 0.0131

Std Dev: 0.2961 +/- 0.0088 Std Dev: 0.4052 +/- 0.0047 Std Dev: 0.3178 +/- 0.0093

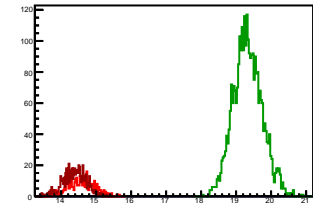


Cycle 13, Sums

Entries: 388 Entries: 3045 Entries: 573

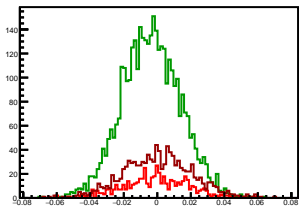
Mean: 14.5709 +/- 0.0189 Mean: 19.3347 +/- 0.0075 Mean: 14.3884 +/- 0.0139

Std Dev: 0.3727 +/- 0.0134 Std Dev: 0.4114 +/- 0.0053 Std Dev: 0.3328 +/- 0.0098



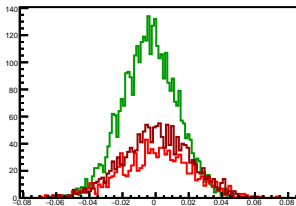
Cycle 1, Asyms

Entries: 566	Entries: 3794	Entries: 1085
Mean: -0.0010 +/- 0.0008	Mean: -0.0037 +/- 0.0003	Mean: 0.0005 +/- 0.0006
Std Dev: 0.0195 +/- 0.0006	Std Dev: 0.0174 +/- 0.0002	Std Dev: 0.0205 +/- 0.0004



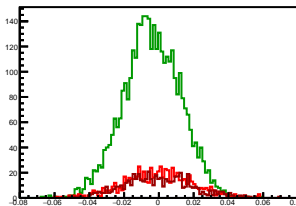
Cycle 2, Asyms

Entries: 1068	Entries: 3675	Entries: 1605
Mean: 0.0005 +/- 0.0007	Mean: -0.0037 +/- 0.0003	Mean: 0.0003 +/- 0.0005
Std Dev: 0.0216 +/- 0.0005	Std Dev: 0.0169 +/- 0.0002	Std Dev: 0.0203 +/- 0.0004



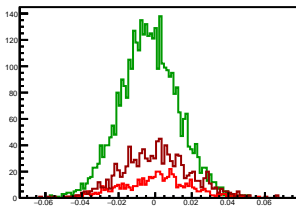
Cycle 3, Asyms

Entries: 704	Entries: 3711	Entries: 564
Mean: -0.0004 +/- 0.0007	Mean: -0.0041 +/- 0.0003	Mean: -0.0004 +/- 0.0006
Std Dev: 0.0198 +/- 0.0005	Std Dev: 0.0165 +/- 0.0002	Std Dev: 0.0197 +/- 0.0006



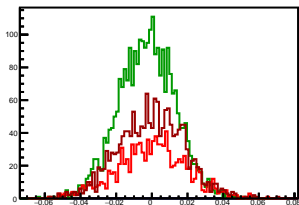
Cycle 4, Asyms

Entries: 569	Entries: 3784	Entries: 1062
Mean: 0.0004 +/- 0.0008	Mean: -0.0033 +/- 0.0003	Mean: 0.0006 +/- 0.0006
Std Dev: 0.0184 +/- 0.0005	Std Dev: 0.0159 +/- 0.0002	Std Dev: 0.0188 +/- 0.0004



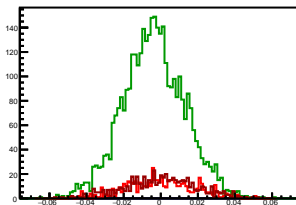
Cycle 5, Asyms

Entries: 1056	Entries: 2741	Entries: 1602
Mean: -0.0002 +/- 0.0006	Mean: -0.0028 +/- 0.0003	Mean: -0.0004 +/- 0.0005
Std Dev: 0.0194 +/- 0.0004	Std Dev: 0.0159 +/- 0.0002	Std Dev: 0.0183 +/- 0.0003



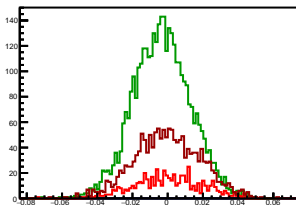
Cycle 6, Asyms

Entries: 566	Entries: 3672	Entries: 594
Mean: -0.0002 +/- 0.0006	Mean: -0.0039 +/- 0.0003	Mean: -0.0001 +/- 0.0006
Std Dev: 0.0188 +/- 0.0006	Std Dev: 0.0166 +/- 0.0002	Std Dev: 0.0192 +/- 0.0005



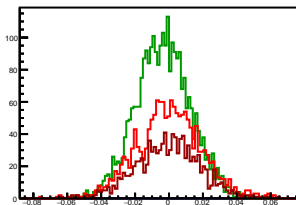
Cycle 7, Asyms

Entries: 583	Entries: 3739	Entries: 1576
Mean: 0.0001 +/- 0.0006	Mean: -0.0033 +/- 0.0003	Mean: -0.0002 +/- 0.0005
Std Dev: 0.0191 +/- 0.0006	Std Dev: 0.0164 +/- 0.0002	Std Dev: 0.0188 +/- 0.0005



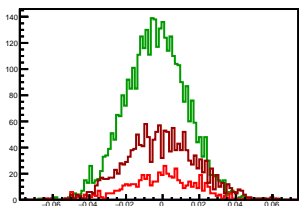
Cycle 8, Asyms

Entries: 1586	Entries: 2841	Entries: 1047
Mean: -0.0002 +/- 0.0005	Mean: -0.0036 +/- 0.0003	Mean: -0.0004 +/- 0.0006
Std Dev: 0.0193 +/- 0.0003	Std Dev: 0.0163 +/- 0.0002	Std Dev: 0.0187 +/- 0.0004



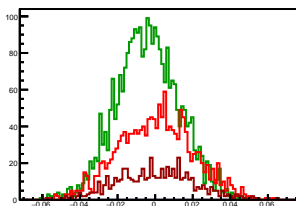
Cycle 9, Asyms

Entries: 576	Entries: 3713	Entries: 1594
Mean: -0.0012 +/- 0.0008	Mean: -0.0037 +/- 0.0003	Mean: -0.0006 +/- 0.0005
Std Dev: 0.0194 +/- 0.0006	Std Dev: 0.0166 +/- 0.0002	Std Dev: 0.0194 +/- 0.0003



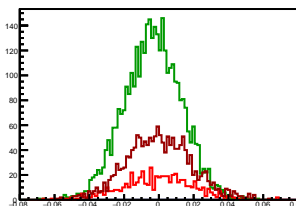
Cycle 10, Asyms

Entries: 1599	Entries: 2906	Entries: 556
Mean: 0.0004 +/- 0.0005	Mean: -0.0039 +/- 0.0003	Mean: 0.0001 +/- 0.0009
Std Dev: 0.0198 +/- 0.0004	Std Dev: 0.0170 +/- 0.0002	Std Dev: 0.0203 +/- 0.0006



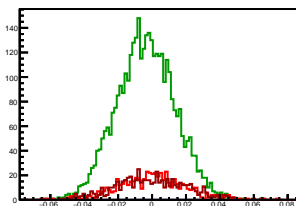
Cycle 11, Asyms

Entries: 587	Entries: 3687	Entries: 1643
Mean: -0.0011 +/- 0.0008	Mean: -0.0035 +/- 0.0003	Mean: 0.0001 +/- 0.0005
Std Dev: 0.0201 +/- 0.0006	Std Dev: 0.0164 +/- 0.0002	Std Dev: 0.0189 +/- 0.0003



Cycle 12, Asyms

Entries: 572	Entries: 3723	Entries: 586
Mean: 0.0001 +/- 0.0008	Mean: -0.0037 +/- 0.0003	Mean: -0.0008 +/- 0.0009
Std Dev: 0.0202 +/- 0.0006	Std Dev: 0.0171 +/- 0.0002	Std Dev: 0.0206 +/- 0.0006



Cycle 13, Asyms

Entries: 388	Entries: 3045	Entries: 573
Mean: 0.0002 +/- 0.0009	Mean: -0.0033 +/- 0.0003	Mean: -0.0000 +/- 0.0006
Std Dev: 0.0183 +/- 0.0007	Std Dev: 0.0168 +/- 0.0002	Std Dev: 0.0201 +/- 0.0006

