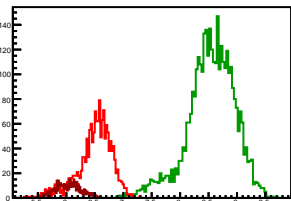


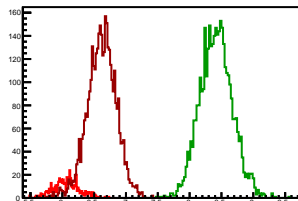
Cycle 1, PosHel

Entries: 1630	Entries: 3685	Entries: 494
Mean: 6.5004 +/- 0.0075	Mean: 8.5406 +/- 0.0069	Mean: 6.0322 +/- 0.0099
Std Dev: 0.3025 +/- 0.0053	Std Dev: 0.4202 +/- 0.0049	Std Dev: 0.2192 +/- 0.0070



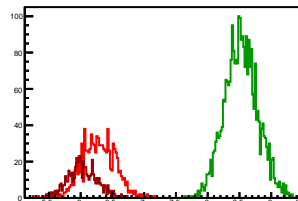
Cycle 2, PosHel

Entries: 495	Entries: 3754	Entries: 3800
Mean: 6.0603 +/- 0.0093	Mean: 8.4161 +/- 0.0042	Mean: 6.6178 +/- 0.0037
Std Dev: 0.2076 +/- 0.0066	Std Dev: 0.2553 +/- 0.0029	Std Dev: 0.2276 +/- 0.0026



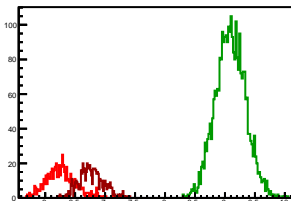
Cycle 3, PosHel

Entries: 987	Entries: 2831	Entries: 568
Mean: 6.2624 +/- 0.0063	Mean: 8.5277 +/- 0.0049	Mean: 6.0292 +/- 0.0098
Std Dev: 0.2606 +/- 0.0059	Std Dev: 0.2615 +/- 0.0035	Std Dev: 0.2347 +/- 0.0070



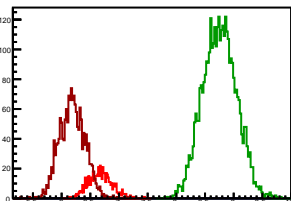
Cycle 4, PosHel

Entries: 569	Entries: 2961	Entries: 578
Mean: 6.2658 +/- 0.0106	Mean: 9.0917 +/- 0.0046	Mean: 6.7751 +/- 0.0067
Std Dev: 0.2527 +/- 0.0075	Std Dev: 0.2509 +/- 0.0033	Std Dev: 0.2093 +/- 0.0062



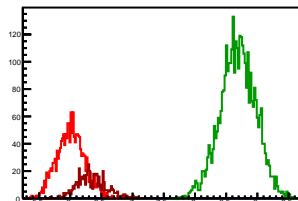
Cycle 5, PosHel

Entries: 582	Entries: 3752	Entries: 1681
Mean: 6.6760 +/- 0.0067	Mean: 8.7542 +/- 0.0048	Mean: 6.1853 +/- 0.0054
Std Dev: 0.2098 +/- 0.0061	Std Dev: 0.2953 +/- 0.0034	Std Dev: 0.2217 +/- 0.0038



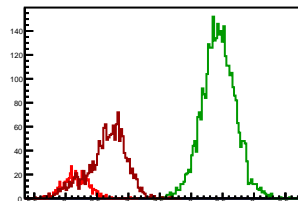
Cycle 6, PosHel

Entries: 1653	Entries: 3690	Entries: 556
Mean: 6.0075 +/- 0.0055	Mean: 8.6864 +/- 0.0047	Mean: 6.3432 +/- 0.0097
Std Dev: 0.2229 +/- 0.0039	Std Dev: 0.2839 +/- 0.0033	Std Dev: 0.2281 +/- 0.0068



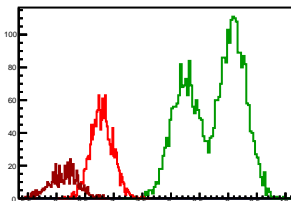
Cycle 7, PosHel

Entries: 562	Entries: 3680	Entries: 1605
Mean: 6.1656 +/- 0.0063	Mean: 8.4375 +/- 0.0044	Mean: 6.6500 +/- 0.0079
Std Dev: 0.1971 +/- 0.0059	Std Dev: 0.2640 +/- 0.0031	Std Dev: 0.3160 +/- 0.0056



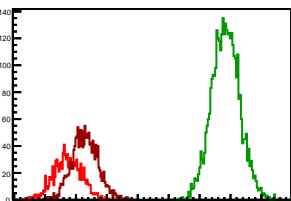
Cycle 8, PosHel

Entries: 1609	Entries: 3553	Entries: 604
Mean: 6.7939 +/- 0.0049	Mean: 8.7357 +/- 0.0082	Mean: 6.1340 +/- 0.0102
Std Dev: 0.1971 +/- 0.0035	Std Dev: 0.4869 +/- 0.0058	Std Dev: 0.2502 +/- 0.0072



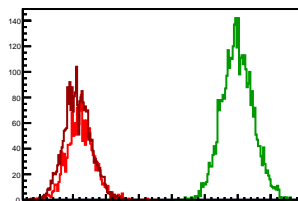
Cycle 9, PosHel

Entries: 1056	Entries: 3721	Entries: 1576
Mean: 6.3639 +/- 0.0069	Mean: 8.9227 +/- 0.0037	Mean: 6.6467 +/- 0.0053
Std Dev: 0.2240 +/- 0.0049	Std Dev: 0.2285 +/- 0.0026	Std Dev: 0.2100 +/- 0.0037



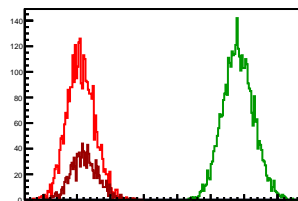
Cycle 10, PosHel

Entries: 1583	Entries: 3785	Entries: 2546
Mean: 6.6196 +/- 0.0052	Mean: 8.9971 +/- 0.0039	Mean: 6.5715 +/- 0.0041
Std Dev: 0.2089 +/- 0.0037	Std Dev: 0.2378 +/- 0.0027	Std Dev: 0.2056 +/- 0.0029



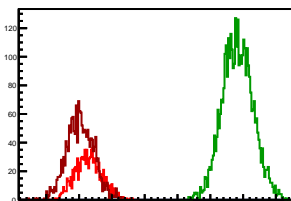
Cycle 11, PosHel

Entries: 3195	Entries: 3722	Entries: 1112
Mean: 6.5554 +/- 0.0036	Mean: 8.9108 +/- 0.0038	Mean: 6.6157 +/- 0.0061
Std Dev: 0.2062 +/- 0.0026	Std Dev: 0.2302 +/- 0.0027	Std Dev: 0.2025 +/- 0.0043



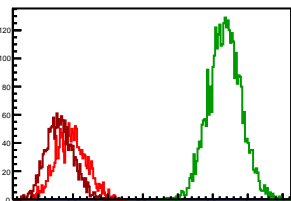
Cycle 12, PosHel

Entries: 1089	Entries: 3747	Entries: 1695
Mean: 6.6403 +/- 0.0061	Mean: 8.9160 +/- 0.0038	Mean: 6.5174 +/- 0.0050
Std Dev: 0.2004 +/- 0.0043	Std Dev: 0.2348 +/- 0.0027	Std Dev: 0.2047 +/- 0.0035



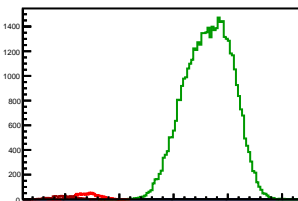
Cycle 13, PosHel

Entries: 1669	Entries: 3662	Entries: 1679
Mean: 6.4740 +/- 0.0053	Mean: 8.6724 +/- 0.0038	Mean: 6.3134 +/- 0.0048
Std Dev: 0.2161 +/- 0.0037	Std Dev: 0.2321 +/- 0.0027	Std Dev: 0.1986 +/- 0.0034



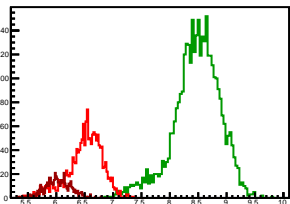
Cycle 14, PosHel

Entries: 1651	Entries: 45527	Entries: 681
Mean: 6.4225 +/- 0.0052	Mean: 8.6464 +/- 0.0020	Mean: 5.9674 +/- 0.0086
Std Dev: 0.2099 +/- 0.0037	Std Dev: 0.4347 +/- 0.0014	Std Dev: 0.2253 +/- 0.0061



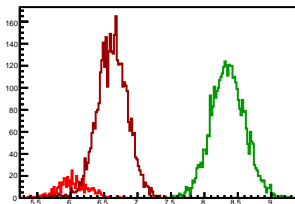
Cycle 1, NegHel

Entries: 1630	Entries: 3685	Entries: 494
Mean: 6.5002 +/- 0.0079	Mean: 8.4696 +/- 0.0068	Mean: 6.0326 +/- 0.0101
Std Dev: 0.3172 +/- 0.0056	Std Dev: 0.4133 +/- 0.0048	Std Dev: 0.2252 +/- 0.0072



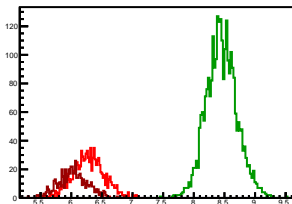
Cycle 2, NegHel

Entries: 495	Entries: 3754	Entries: 3800
Mean: 6.0454 +/- 0.0101	Mean: 8.3530 +/- 0.0041	Mean: 6.6218 +/- 0.0037
Std Dev: 0.2238 +/- 0.0071	Std Dev: 0.2524 +/- 0.0029	Std Dev: 0.2296 +/- 0.0026



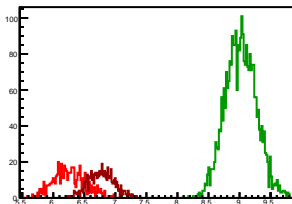
Cycle 3, NegHel

Entries: 987	Entries: 2831	Entries: 568
Mean: 6.2828 +/- 0.0081	Mean: 8.4538 +/- 0.0047	Mean: 6.0273 +/- 0.0099
Std Dev: 0.2557 +/- 0.0058	Std Dev: 0.2508 +/- 0.0033	Std Dev: 0.2363 +/- 0.0070



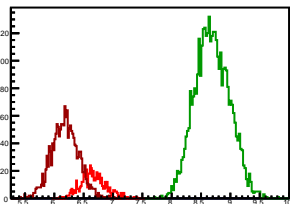
Cycle 4, NegHel

Entries: 569	Entries: 2961	Entries: 578
Mean: 6.2582 +/- 0.0107	Mean: 9.0197 +/- 0.0046	Mean: 6.7711 +/- 0.0086
Std Dev: 0.2543 +/- 0.0075	Std Dev: 0.2514 +/- 0.0033	Std Dev: 0.2061 +/- 0.0061



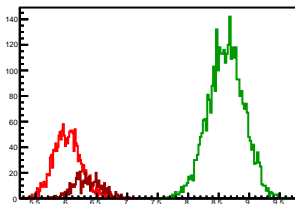
Cycle 5, NegHel

Entries: 582	Entries: 3752	Entries: 1681
Mean: 6.6644 +/- 0.0089	Mean: 8.6892 +/- 0.0048	Mean: 6.1820 +/- 0.0056
Std Dev: 0.2149 +/- 0.0063	Std Dev: 0.2927 +/- 0.0034	Std Dev: 0.2295 +/- 0.0040



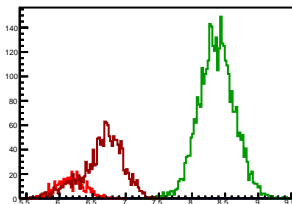
Cycle 6, NegHel

Entries: 1653	Entries: 3690	Entries: 556
Mean: 6.0208 +/- 0.0055	Mean: 8.6193 +/- 0.0048	Mean: 6.3544 +/- 0.0095
Std Dev: 0.2243 +/- 0.0039	Std Dev: 0.2917 +/- 0.0034	Std Dev: 0.2245 +/- 0.0067



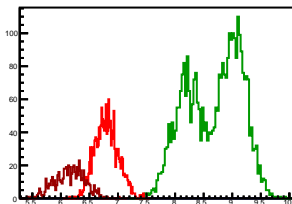
Cycle 7, NegHel

Entries: 562	Entries: 3680	Entries: 1605
Mean: 6.1677 +/- 0.0090	Mean: 8.3717 +/- 0.0044	Mean: 6.6463 +/- 0.0079
Std Dev: 0.2140 +/- 0.0064	Std Dev: 0.2686 +/- 0.0031	Std Dev: 0.3145 +/- 0.0056



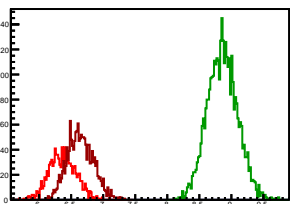
Cycle 8, NegHel

Entries: 1609	Entries: 3553	Entries: 604
Mean: 6.7993 +/- 0.0051	Mean: 8.6768 +/- 0.0081	Mean: 6.1542 +/- 0.0104
Std Dev: 0.2037 +/- 0.0036	Std Dev: 0.4810 +/- 0.0057	Std Dev: 0.2564 +/- 0.0074



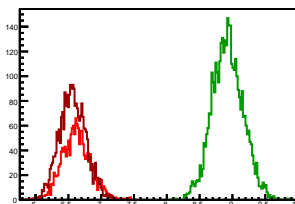
Cycle 9, NegHel

Entries: 1056	Entries: 3721	Entries: 1576
Mean: 6.3663 +/- 0.0065	Mean: 8.8602 +/- 0.0039	Mean: 6.6466 +/- 0.0051
Std Dev: 0.2117 +/- 0.0046	Std Dev: 0.2350 +/- 0.0027	Std Dev: 0.2032 +/- 0.0036



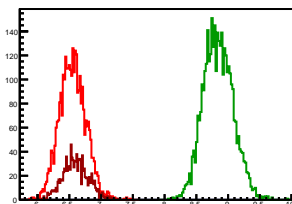
Cycle 10, NegHel

Entries: 1583	Entries: 3785	Entries: 2546
Mean: 6.6211 +/- 0.0054	Mean: 8.9277 +/- 0.0038	Mean: 6.5645 +/- 0.0040
Std Dev: 0.2150 +/- 0.0038	Std Dev: 0.2347 +/- 0.0027	Std Dev: 0.2032 +/- 0.0028



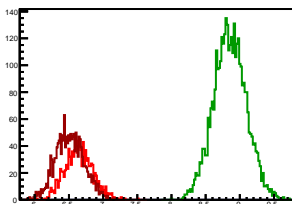
Cycle 11, NegHel

Entries: 3195	Entries: 3722	Entries: 1112
Mean: 6.5517 +/- 0.0037	Mean: 8.8431 +/- 0.0038	Mean: 6.5981 +/- 0.0060
Std Dev: 0.2075 +/- 0.0026	Std Dev: 0.2338 +/- 0.0027	Std Dev: 0.2014 +/- 0.0043



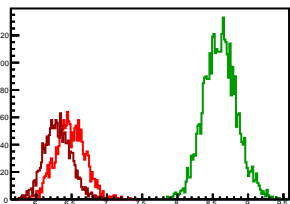
Cycle 12, NegHel

Entries: 1089	Entries: 3747	Entries: 1695
Mean: 6.6436 +/- 0.0062	Mean: 8.8547 +/- 0.0039	Mean: 6.5131 +/- 0.0051
Std Dev: 0.2033 +/- 0.0044	Std Dev: 0.2404 +/- 0.0028	Std Dev: 0.2098 +/- 0.0036



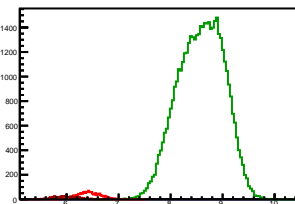
Cycle 13, NegHel

Entries: 1669	Entries: 3662	Entries: 1679
Mean: 6.4819 +/- 0.0052	Mean: 8.6054 +/- 0.0039	Mean: 6.3057 +/- 0.0047
Std Dev: 0.2120 +/- 0.0037	Std Dev: 0.2348 +/- 0.0027	Std Dev: 0.1939 +/- 0.0033



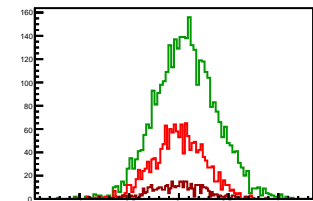
Cycle 14, NegHel

Entries: 1651	Entries: 45927	Entries: 681
Mean: 6.4253 +/- 0.0054	Mean: 8.5842 +/- 0.0020	Mean: 5.9825 +/- 0.0092
Std Dev: 0.2181 +/- 0.0038	Std Dev: 0.4347 +/- 0.0014	Std Dev: 0.2396 +/- 0.0065



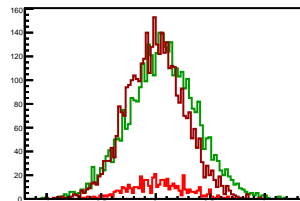
Cycle 1, Diffs

Entries: 1630	Entries: 3685	Entries: 494
Mean: 0.0001 +/- 0.0065	Mean: 0.0709 +/- 0.0050	Mean: -0.0004 +/- 0.0114
Std Dev: 0.2619 +/- 0.0046	Std Dev: 0.3057 +/- 0.0036	Std Dev: 0.2524 +/- 0.0080



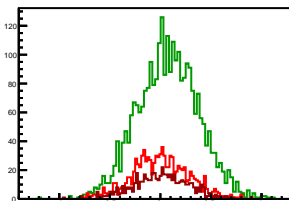
Cycle 2, Diffs

Entries: 495	Entries: 3754	Entries: 3800
Mean: 0.0149 +/- 0.0118	Mean: 0.0630 +/- 0.0051	Mean: -0.0040 +/- 0.0043
Std Dev: 0.2628 +/- 0.0084	Std Dev: 0.3119 +/- 0.0036	Std Dev: 0.2666 +/- 0.0031



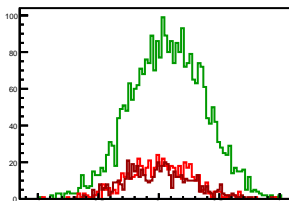
Cycle 3, Diffs

Entries: 987	Entries: 2831	Entries: 568
Mean: -0.0004 +/- 0.0089	Mean: 0.0739 +/- 0.0057	Mean: 0.0019 +/- 0.0113
Std Dev: 0.2784 +/- 0.0063	Std Dev: 0.3039 +/- 0.0040	Std Dev: 0.2690 +/- 0.0080



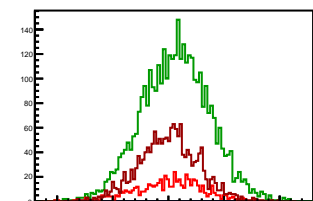
Cycle 4, Diffs

Entries: 569	Entries: 2961	Entries: 578
Mean: 0.0075 +/- 0.0112	Mean: 0.0720 +/- 0.0056	Mean: 0.0040 +/- 0.0115
Std Dev: 0.2679 +/- 0.0079	Std Dev: 0.3057 +/- 0.0040	Std Dev: 0.2765 +/- 0.0091



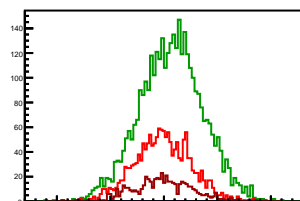
Cycle 5, Diffs

Entries: 582	Entries: 3752	Entries: 1681
Mean: 0.0116 +/- 0.0123	Mean: 0.0650 +/- 0.0050	Mean: 0.0033 +/- 0.0065
Std Dev: 0.2962 +/- 0.0087	Std Dev: 0.3053 +/- 0.0035	Std Dev: 0.2660 +/- 0.0046



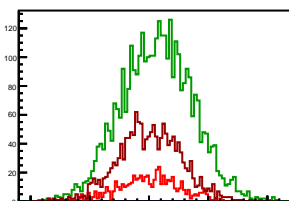
Cycle 6, Diffs

Entries: 1653	Entries: 3690	Entries: 556
Mean: -0.0133 +/- 0.0065	Mean: 0.0670 +/- 0.0049	Mean: -0.0112 +/- 0.0115
Std Dev: 0.2635 +/- 0.0046	Std Dev: 0.2982 +/- 0.0035	Std Dev: 0.2720 +/- 0.0082



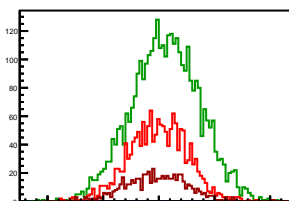
Cycle 7, Diffs

Entries: 562	Entries: 3680	Entries: 1605
Mean: -0.0021 +/- 0.0111	Mean: 0.0658 +/- 0.0050	Mean: 0.0036 +/- 0.0066
Std Dev: 0.2628 +/- 0.0078	Std Dev: 0.3017 +/- 0.0035	Std Dev: 0.2654 +/- 0.0047



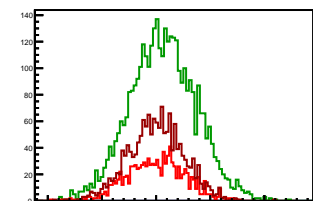
Cycle 8, Diffs

Entries: 1609	Entries: 3553	Entries: 604
Mean: -0.0054 +/- 0.0065	Mean: 0.0588 +/- 0.0051	Mean: -0.0202 +/- 0.0109
Std Dev: 0.2618 +/- 0.0046	Std Dev: 0.3046 +/- 0.0036	Std Dev: 0.2674 +/- 0.0077



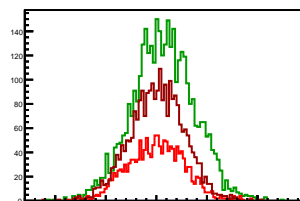
Cycle 9, Diffs

Entries: 1056	Entries: 3721	Entries: 1576
Mean: -0.0023 +/- 0.0084	Mean: 0.0624 +/- 0.0050	Mean: 0.0001 +/- 0.0065
Std Dev: 0.2731 +/- 0.0059	Std Dev: 0.3076 +/- 0.0036	Std Dev: 0.2582 +/- 0.0046



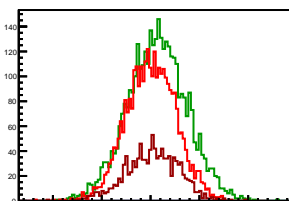
Cycle 10, Diffs

Entries: 1583	Entries: 3785	Entries: 2546
Mean: -0.0015 +/- 0.0070	Mean: 0.0694 +/- 0.0050	Mean: 0.0070 +/- 0.0053
Std Dev: 0.2799 +/- 0.0050	Std Dev: 0.3067 +/- 0.0035	Std Dev: 0.2681 +/- 0.0038



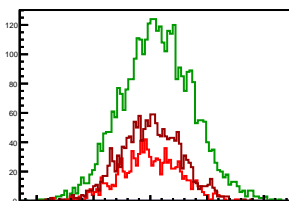
Cycle 11, Diffs

Entries: 3195	Entries: 3722	Entries: 1112
Mean: 0.0037 +/- 0.0045	Mean: 0.0677 +/- 0.0050	Mean: 0.0176 +/- 0.0081
Std Dev: 0.2561 +/- 0.0032	Std Dev: 0.3022 +/- 0.0035	Std Dev: 0.2687 +/- 0.0057



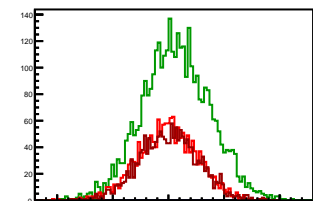
Cycle 12, Diffs

Entries: 1089	Entries: 3747	Entries: 1695
Mean: -0.0034 +/- 0.0080	Mean: 0.0613 +/- 0.0051	Mean: 0.0043 +/- 0.0064
Std Dev: 0.2643 +/- 0.0057	Std Dev: 0.3126 +/- 0.0036	Std Dev: 0.2619 +/- 0.0045



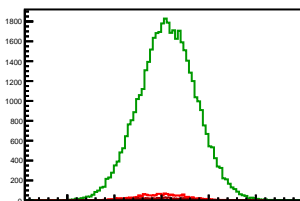
Cycle 13, Diffs

Entries: 1669	Entries: 3662	Entries: 1679
Mean: -0.0080 +/- 0.0065	Mean: 0.0670 +/- 0.0051	Mean: 0.0078 +/- 0.0065
Std Dev: 0.2658 +/- 0.0046	Std Dev: 0.3066 +/- 0.0036	Std Dev: 0.2646 +/- 0.0046



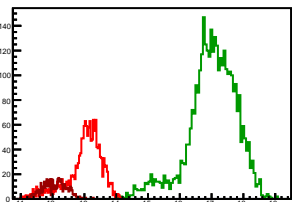
Cycle 14, Diffs

Entries: 1651	Entries: 45527	Entries: 681
Mean: -0.0028 +/- 0.0066	Mean: 0.0623 +/- 0.0014	Mean: -0.0151 +/- 0.0100
Std Dev: 0.2674 +/- 0.0047	Std Dev: 0.3025 +/- 0.0010	Std Dev: 0.2621 +/- 0.0071



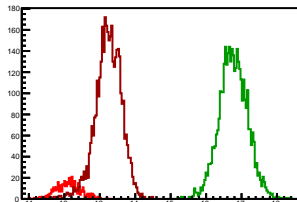
Cycle 1, Sums

Entries: 1630	Entries: 3685	Entries: 494
Mean: 13.0006 +/- 0.0139	Mean: 17.0102 +/- 0.0128	Mean: 12.0648 +/- 0.0165
Std Dev: 0.5619 +/- 0.0098	Std Dev: 0.7754 +/- 0.0090	Std Dev: 0.3658 +/- 0.0116



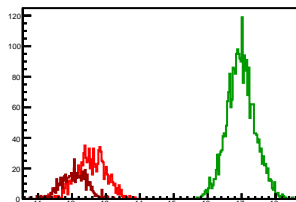
Cycle 2, Sums

Entries: 495	Entries: 3754	Entries: 3800
Mean: 12.1057 +/- 0.0154	Mean: 16.7691 +/- 0.0065	Mean: 13.2396 +/- 0.0060
Std Dev: 0.3425 +/- 0.0109	Std Dev: 0.4006 +/- 0.0046	Std Dev: 0.3714 +/- 0.0043



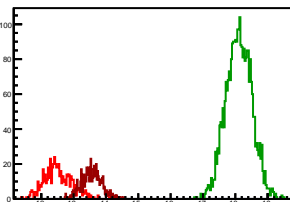
Cycle 3, Sums

Entries: 987	Entries: 2831	Entries: 568
Mean: 12.5652 +/- 0.0138	Mean: 16.9815 +/- 0.0078	Mean: 12.0564 +/- 0.0162
Std Dev: 0.4347 +/- 0.0098	Std Dev: 0.4126 +/- 0.0055	Std Dev: 0.3866 +/- 0.0115



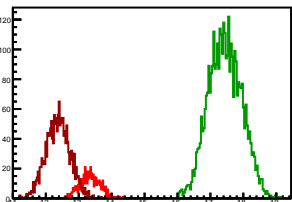
Cycle 4, Sums

Entries: 569	Entries: 2961	Entries: 578
Mean: 12.5240 +/- 0.0180	Mean: 18.1114 +/- 0.0073	Mean: 13.5462 +/- 0.0129
Std Dev: 0.4305 +/- 0.0128	Std Dev: 0.3985 +/- 0.0052	Std Dev: 0.3100 +/- 0.0091



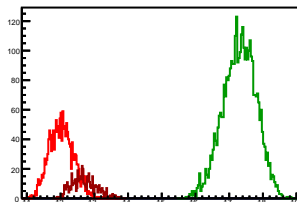
Cycle 5, Sums

Entries: 582	Entries: 3782	Entries: 1681
Mean: 13.3404 +/- 0.0126	Mean: 17.4433 +/- 0.0082	Mean: 12.3673 +/- 0.0089
Std Dev: 0.3045 +/- 0.0089	Std Dev: 0.5026 +/- 0.0058	Std Dev: 0.3645 +/- 0.0063



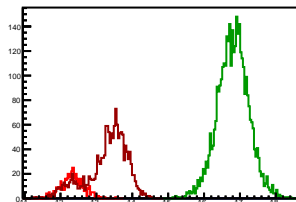
Cycle 6, Sums

Entries: 1653	Entries: 3690	Entries: 556
Mean: 12.0282 +/- 0.0089	Mean: 17.3057 +/- 0.0061	Mean: 12.6976 +/- 0.0153
Std Dev: 0.3613 +/- 0.0063	Std Dev: 0.4923 +/- 0.0057	Std Dev: 0.3618 +/- 0.0108



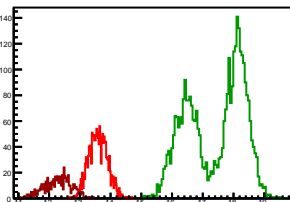
Cycle 7, Sums

Entries: 562	Entries: 3680	Entries: 1605
Mean: 12.3332 +/- 0.0133	Mean: 16.8091 +/- 0.0072	Mean: 13.2963 +/- 0.0143
Std Dev: 0.3165 +/- 0.0094	Std Dev: 0.4390 +/- 0.0051	Std Dev: 0.5719 +/- 0.0101



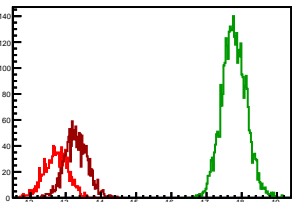
Cycle 8, Sums

Entries: 1609	Entries: 3553	Entries: 604
Mean: 13.5932 +/- 0.0076	Mean: 17.4125 +/- 0.0154	Mean: 12.2882 +/- 0.0175
Std Dev: 0.3036 +/- 0.0054	Std Dev: 0.9187 +/- 0.0109	Std Dev: 0.4304 +/- 0.0124



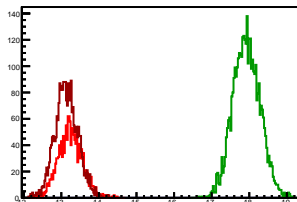
Cycle 9, Sums

Entries: 1056	Entries: 3721	Entries: 1576
Mean: 12.7302 +/- 0.0105	Mean: 17.7829 +/- 0.0057	Mean: 13.2934 +/- 0.0081
Std Dev: 0.3397 +/- 0.0074	Std Dev: 0.3467 +/- 0.0040	Std Dev: 0.3227 +/- 0.0057



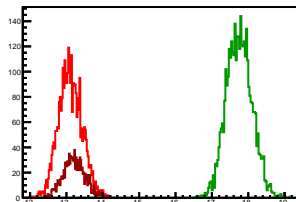
Cycle 10, Sums

Entries: 1583	Entries: 3785	Entries: 2546
Mean: 13.2407 +/- 0.0080	Mean: 17.9248 +/- 0.0058	Mean: 13.1360 +/- 0.0061
Std Dev: 0.3184 +/- 0.0057	Std Dev: 0.3594 +/- 0.0041	Std Dev: 0.3086 +/- 0.0043



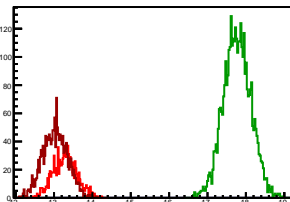
Cycle 11, Sums

Entries: 3195	Entries: 3722	Entries: 1112
Mean: 13.1070 +/- 0.0057	Mean: 17.7539 +/- 0.0058	Mean: 13.2137 +/- 0.0090
Std Dev: 0.3249 +/- 0.0041	Std Dev: 0.3521 +/- 0.0041	Std Dev: 0.3016 +/- 0.0064



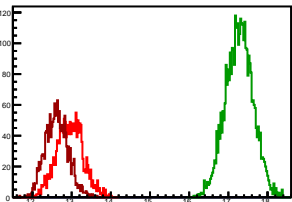
Cycle 12, Sums

Entries: 1089	Entries: 3747	Entries: 1695
Mean: 13.2839 +/- 0.0092	Mean: 17.7706 +/- 0.0058	Mean: 13.0305 +/- 0.0078
Std Dev: 0.3052 +/- 0.0065	Std Dev: 0.3578 +/- 0.0041	Std Dev: 0.3213 +/- 0.0055



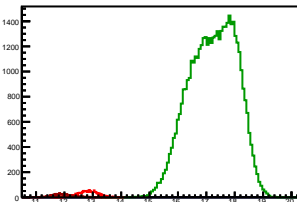
Cycle 13, Sums

Entries: 1669	Entries: 3662	Entries: 1679
Mean: 12.9559 +/- 0.0082	Mean: 17.2778 +/- 0.0058	Mean: 12.6191 +/- 0.0071
Std Dev: 0.3356 +/- 0.0058	Std Dev: 0.3522 +/- 0.0041	Std Dev: 0.2899 +/- 0.0050



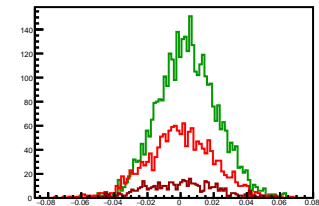
Cycle 14, Sums

Entries: 1651	Entries: 45527	Entries: 681
Mean: 12.8477 +/- 0.0082	Mean: 17.2306 +/- 0.0038	Mean: 11.9498 +/- 0.0147
Std Dev: 0.3343 +/- 0.0058	Std Dev: 0.8151 +/- 0.0027	Std Dev: 0.3842 +/- 0.0104



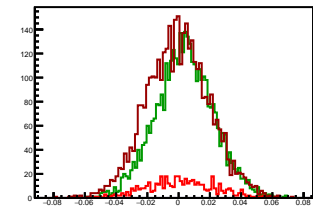
Cycle 1, Asyms

Entries: 1630	Entries: 3685	Entries: 494
Mean: 0.0001 +/- 0.0005	Mean: 0.0042 +/- 0.0003	Mean: -0.0000 +/- 0.0009
Std Dev: 0.0202 +/- 0.0004	Std Dev: 0.0180 +/- 0.0002	Std Dev: 0.0209 +/- 0.0007



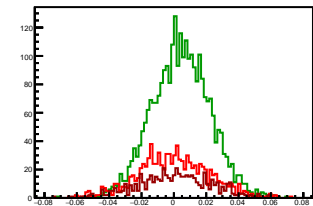
Cycle 2, Asyms

Entries: 495	Entries: 3754	Entries: 3800
Mean: 0.0013 +/- 0.0010	Mean: 0.0038 +/- 0.0003	Mean: -0.0003 +/- 0.0003
Std Dev: 0.0217 +/- 0.0007	Std Dev: 0.0186 +/- 0.0002	Std Dev: 0.0201 +/- 0.0002



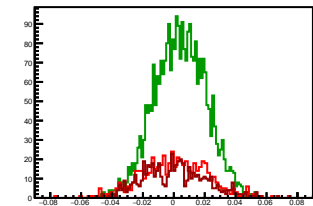
Cycle 3, Asyms

Entries: 987	Entries: 2831	Entries: 568
Mean: -0.0000 +/- 0.0007	Mean: 0.0043 +/- 0.0003	Mean: 0.0002 +/- 0.0009
Std Dev: 0.0221 +/- 0.0005	Std Dev: 0.0179 +/- 0.0002	Std Dev: 0.0222 +/- 0.0007



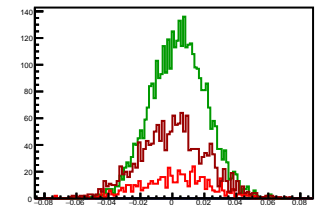
Cycle 4, Asyms

Entries: 569	Entries: 2961	Entries: 578
Mean: 0.0006 +/- 0.0009	Mean: 0.0040 +/- 0.0003	Mean: 0.0003 +/- 0.0008
Std Dev: 0.0213 +/- 0.0006	Std Dev: 0.0169 +/- 0.0002	Std Dev: 0.0204 +/- 0.0006



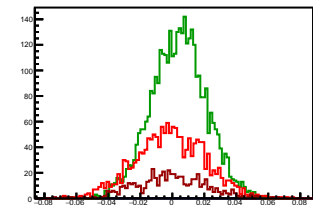
Cycle 5, Asyms

Entries: 582	Entries: 3752	Entries: 1681
Mean: 0.0009 +/- 0.0009	Mean: 0.0037 +/- 0.0003	Mean: 0.0003 +/- 0.0005
Std Dev: 0.0221 +/- 0.0006	Std Dev: 0.0175 +/- 0.0002	Std Dev: 0.0215 +/- 0.0004



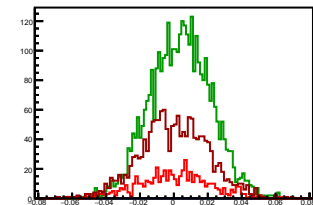
Cycle 6, Asyms

Entries: 1653	Entries: 3690	Entries: 556
Mean: -0.0011 +/- 0.0005	Mean: 0.0039 +/- 0.0003	Mean: -0.0009 +/- 0.0009
Std Dev: 0.0219 +/- 0.0004	Std Dev: 0.0172 +/- 0.0002	Std Dev: 0.0214 +/- 0.0006



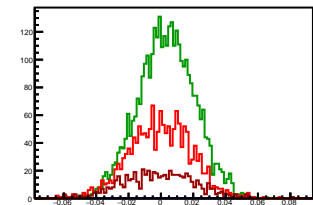
Cycle 7, Asyms

Entries: 562	Entries: 3680	Entries: 1605
Mean: -0.0001 +/- 0.0009	Mean: 0.0039 +/- 0.0003	Mean: 0.0003 +/- 0.0005
Std Dev: 0.0213 +/- 0.0006	Std Dev: 0.0179 +/- 0.0002	Std Dev: 0.0200 +/- 0.0004



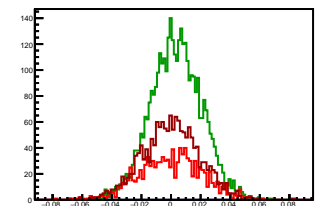
Cycle 8, Asyms

Entries: 1609	Entries: 3553	Entries: 604
Mean: -0.0004 +/- 0.0005	Mean: 0.0034 +/- 0.0003	Mean: -0.0016 +/- 0.0009
Std Dev: 0.0192 +/- 0.0003	Std Dev: 0.0175 +/- 0.0002	Std Dev: 0.0218 +/- 0.0006



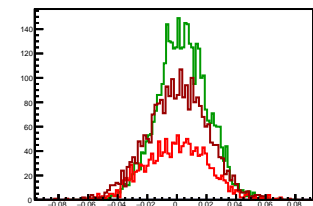
Cycle 9, Asyms

Entries: 1056	Entries: 3721	Entries: 1576
Mean: -0.0002 +/- 0.0007	Mean: 0.0035 +/- 0.0003	Mean: -0.0000 +/- 0.0005
Std Dev: 0.0214 +/- 0.0005	Std Dev: 0.0173 +/- 0.0002	Std Dev: 0.0194 +/- 0.0003



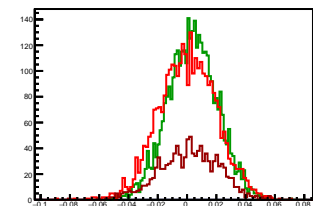
Cycle 10, Asyms

Entries: 1583	Entries: 3785	Entries: 2546
Mean: -0.0001 +/- 0.0005	Mean: 0.0039 +/- 0.0003	Mean: 0.0005 +/- 0.0004
Std Dev: 0.0211 +/- 0.0004	Std Dev: 0.0171 +/- 0.0002	Std Dev: 0.0204 +/- 0.0003



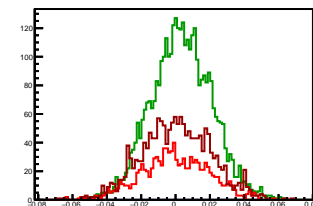
Cycle 11, Asyms

Entries: 3195	Entries: 3722	Entries: 1112
Mean: 0.0003 +/- 0.0003	Mean: 0.0038 +/- 0.0003	Mean: 0.0013 +/- 0.0006
Std Dev: 0.0195 +/- 0.0002	Std Dev: 0.0170 +/- 0.0002	Std Dev: 0.0203 +/- 0.0004



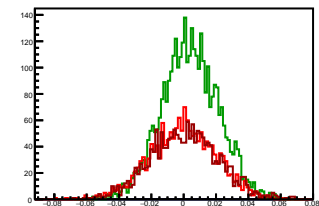
Cycle 12, Asyms

Entries: 1089	Entries: 3747	Entries: 1695
Mean: -0.0002 +/- 0.0006	Mean: 0.0035 +/- 0.0003	Mean: 0.0003 +/- 0.0005
Std Dev: 0.0198 +/- 0.0004	Std Dev: 0.0176 +/- 0.0002	Std Dev: 0.0201 +/- 0.0003



Cycle 13, Asyms

Entries: 1669	Entries: 3662	Entries: 1679
Mean: -0.0006 +/- 0.0005	Mean: 0.0039 +/- 0.0003	Mean: 0.0006 +/- 0.0005
Std Dev: 0.0205 +/- 0.0004	Std Dev: 0.0177 +/- 0.0002	Std Dev: 0.0209 +/- 0.0004



Cycle 14, Asyms

Entries: 1651	Entries: 45527	Entries: 681
Mean: -0.0002 +/- 0.0005	Mean: 0.0036 +/- 0.0001	Mean: -0.0012 +/- 0.0008
Std Dev: 0.0208 +/- 0.0004	Std Dev: 0.0176 +/- 0.0001	Std Dev: 0.0219 +/- 0.0006

