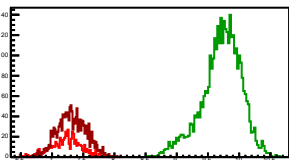
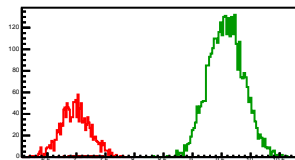


Cycle 1, PosHel

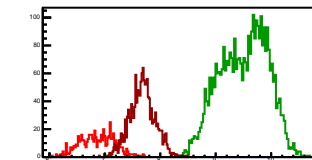
Entries: 605	Entries: 3779	Entries: 1549
Mean: 7.2233 \pm 0.0101	Mean: 9.7132 \pm 0.0052	Mean: 7.3167 \pm 0.0058
Std Dev: 0.2477 \pm 0.0071	Std Dev: 0.3211 \pm 0.0037	Std Dev: 0.2294 \pm 0.0041

**Cycle 2, PosHel**

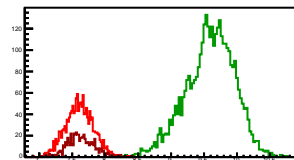
Entries: 1544	Entries: 3624	Entries: 27
Mean: 6.9850 \pm 0.0065	Mean: 9.5751 \pm 0.0051	Mean: 7.1301 \pm 0.0366
Std Dev: 0.2540 \pm 0.0046	Std Dev: 0.3040 \pm 0.0036	Std Dev: 0.1902 \pm 0.0259

**Cycle 3, PosHel**

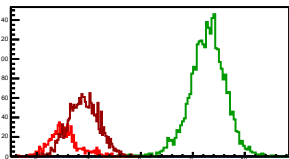
Entries: 621	Entries: 3687	Entries: 1515
Mean: 6.8682 \pm 0.0122	Mean: 9.5067 \pm 0.0071	Mean: 7.6779 \pm 0.0059
Std Dev: 0.3038 \pm 0.0086	Std Dev: 0.4308 \pm 0.0050	Std Dev: 0.2293 \pm 0.0042

**Cycle 4, PosHel**

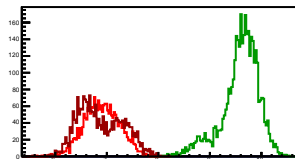
Entries: 1526	Entries: 3701	Entries: 586
Mean: 7.6091 \pm 0.0055	Mean: 9.5910 \pm 0.0061	Mean: 7.6312 \pm 0.0084
Std Dev: 0.2139 \pm 0.0039	Std Dev: 0.3693 \pm 0.0043	Std Dev: 0.2039 \pm 0.0060

**Cycle 5, PosHel**

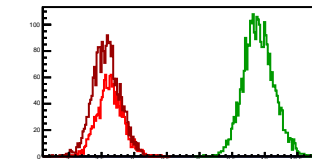
Entries: 788	Entries: 2973	Entries: 2002
Mean: 6.5302 \pm 0.0105	Mean: 9.2834 \pm 0.0063	Mean: 6.8981 \pm 0.0065
Std Dev: 0.2938 \pm 0.0074	Std Dev: 0.3443 \pm 0.0045	Std Dev: 0.2913 \pm 0.0046

**Cycle 6, PosHel**

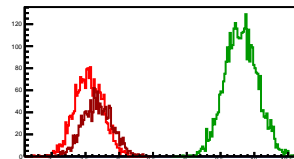
Entries: 2189	Entries: 3796	Entries: 2209
Mean: 6.9010 \pm 0.0073	Mean: 9.5911 \pm 0.0059	Mean: 6.8771 \pm 0.0092
Std Dev: 0.3433 \pm 0.0052	Std Dev: 0.3658 \pm 0.0042	Std Dev: 0.4315 \pm 0.0065

**Cycle 7, PosHel**

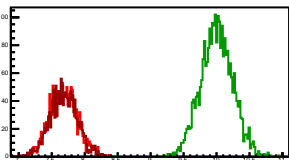
Entries: 1560	Entries: 2963	Entries: 2215
Mean: 7.5288 \pm 0.0050	Mean: 9.9064 \pm 0.0042	Mean: 7.5758 \pm 0.0044
Std Dev: 0.1994 \pm 0.0036	Std Dev: 0.2293 \pm 0.0030	Std Dev: 0.2089 \pm 0.0031

**Cycle 8, PosHel**

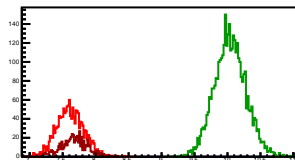
Entries: 2175	Entries: 3695	Entries: 1566
Mean: 7.5488 \pm 0.0045	Mean: 9.8041 \pm 0.0040	Mean: 7.6778 \pm 0.0055
Std Dev: 0.2093 \pm 0.0032	Std Dev: 0.2407 \pm 0.0028	Std Dev: 0.2177 \pm 0.0039

**Cycle 9, PosHel**

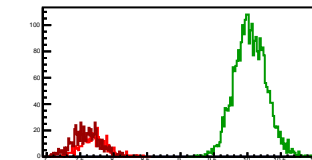
Entries: 1569	Entries: 2731	Entries: 1502
Mean: 7.6808 \pm 0.0054	Mean: 10.0020 \pm 0.0047	Mean: 7.6795 \pm 0.0054
Std Dev: 0.2132 \pm 0.0038	Std Dev: 0.2441 \pm 0.0033	Std Dev: 0.2082 \pm 0.0039

**Cycle 10, PosHel**

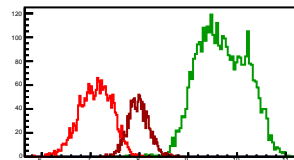
Entries: 1517	Entries: 3713	Entries: 601
Mean: 7.6121 \pm 0.0052	Mean: 10.0398 \pm 0.0039	Mean: 7.6750 \pm 0.0084
Std Dev: 0.2044 \pm 0.0037	Std Dev: 0.2384 \pm 0.0028	Std Dev: 0.2055 \pm 0.0059

**Cycle 11, PosHel**

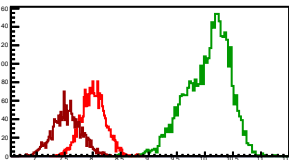
Entries: 457	Entries: 2932	Entries: 643
Mean: 7.7041 \pm 0.0094	Mean: 10.0430 \pm 0.0044	Mean: 7.5892 \pm 0.0083
Std Dev: 0.2011 \pm 0.0067	Std Dev: 0.2358 \pm 0.0031	Std Dev: 0.2110 \pm 0.0059

**Cycle 12, PosHel**

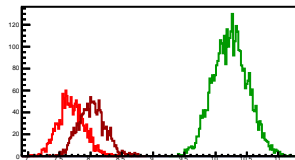
Entries: 2028	Entries: 3712	Entries: 1394
Mean: 7.1058 \pm 0.0074	Mean: 9.7033 \pm 0.0082	Mean: 7.9815 \pm 0.0058
Std Dev: 0.3327 \pm 0.0052	Std Dev: 0.4982 \pm 0.0058	Std Dev: 0.2163 \pm 0.0041

**Cycle 13, PosHel**

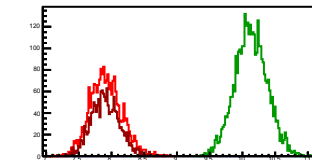
Entries: 2231	Entries: 3759	Entries: 1564
Mean: 8.0122 \pm 0.0046	Mean: 10.0551 \pm 0.0063	Mean: 7.5435 \pm 0.0064
Std Dev: 0.2154 \pm 0.0032	Std Dev: 0.3861 \pm 0.0045	Std Dev: 0.2526 \pm 0.0045

**Cycle 14, PosHel**

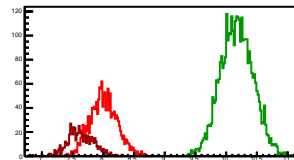
Entries: 1569	Entries: 3745	Entries: 1502
Mean: 7.6888 \pm 0.0053	Mean: 10.2381 \pm 0.0045	Mean: 8.0195 \pm 0.0055
Std Dev: 0.2098 \pm 0.0037	Std Dev: 0.2780 \pm 0.0032	Std Dev: 0.2135 \pm 0.0039

**Cycle 15, PosHel**

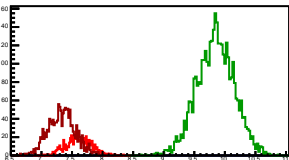
Entries: 2166	Entries: 3671	Entries: 1629
Mean: 7.9150 \pm 0.0052	Mean: 10.1312 \pm 0.0040	Mean: 7.9069 \pm 0.0054
Std Dev: 0.2410 \pm 0.0037	Std Dev: 0.2451 \pm 0.0029	Std Dev: 0.2177 \pm 0.0038

**Cycle 16, PosHel**

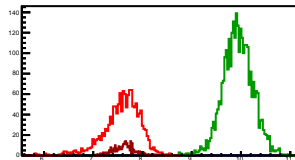
Entries: 1612	Entries: 3659	Entries: 610
Mean: 8.0025 \pm 0.0055	Mean: 10.1747 \pm 0.0044	Mean: 7.6298 \pm 0.0085
Std Dev: 0.2197 \pm 0.0039	Std Dev: 0.2647 \pm 0.0031	Std Dev: 0.2087 \pm 0.0060

**Cycle 17, PosHel**

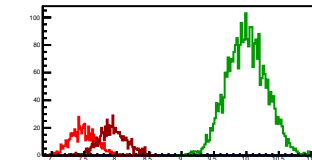
Entries: 602	Entries: 3707	Entries: 1418
Mean: 7.6102 \pm 0.0085	Mean: 9.8453 \pm 0.0050	Mean: 7.3320 \pm 0.0059
Std Dev: 0.2087 \pm 0.0060	Std Dev: 0.3039 \pm 0.0035	Std Dev: 0.2222 \pm 0.0042

**Cycle 18, PosHel**

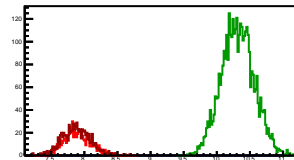
Entries: 1443	Entries: 3112	Entries: 328
Mean: 7.5852 \pm 0.0098	Mean: 9.9364 \pm 0.0055	Mean: 7.6302 \pm 0.0118
Std Dev: 0.3722 \pm 0.0069	Std Dev: 0.3067 \pm 0.0039	Std Dev: 0.2145 \pm 0.0084

**Cycle 19, PosHel**

Entries: 632	Entries: 3005	Entries: 698
Mean: 7.4891 \pm 0.0081	Mean: 10.0048 \pm 0.0055	Mean: 7.9395 \pm 0.0080
Std Dev: 0.2038 \pm 0.0057	Std Dev: 0.3006 \pm 0.0039	Std Dev: 0.2114 \pm 0.0057

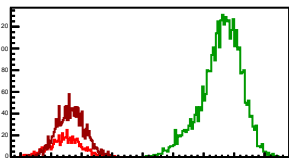
**Cycle 20, PosHel**

Entries: 679	Entries: 3771	Entries: 773
Mean: 7.8889 \pm 0.0076	Mean: 10.3151 \pm 0.0040	Mean: 7.8751 \pm 0.0077
Std Dev: 0.1980 \pm 0.0054	Std Dev: 0.2472 \pm 0.0028	Std Dev: 0.2138 \pm 0.0054

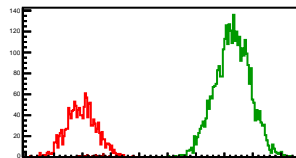


Cycle 1, NegHel

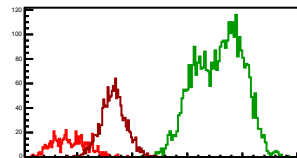
Entries: 605	Entries: 3779	Entries: 1549
Mean: 7.2334 +/- 0.0102	Mean: 9.7891 +/- 0.0054	Mean: 7.3247 +/- 0.0058
Std Dev: 0.2513 +/- 0.0072	Std Dev: 0.3290 +/- 0.0038	Std Dev: 0.2282 +/- 0.0041

**Cycle 2, NegHel**

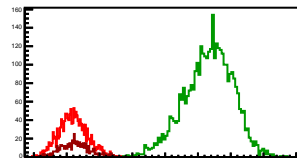
Entries: 1544	Entries: 3624	Entries: 27
Mean: 6.9853 +/- 0.0067	Mean: 9.6439 +/- 0.0051	Mean: 7.2155 +/- 0.0324
Std Dev: 0.2638 +/- 0.0047	Std Dev: 0.3077 +/- 0.0036	Std Dev: 0.1684 +/- 0.0229

**Cycle 3, NegHel**

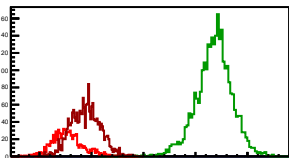
Entries: 621	Entries: 3687	Entries: 1515
Mean: 6.6749 +/- 0.0123	Mean: 9.5734 +/- 0.0071	Mean: 7.6618 +/- 0.0059
Std Dev: 0.3063 +/- 0.0087	Std Dev: 0.4313 +/- 0.0050	Std Dev: 0.2296 +/- 0.0042

**Cycle 4, NegHel**

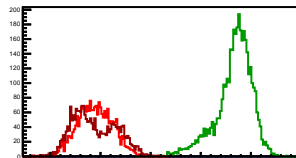
Entries: 1526	Entries: 3701	Entries: 586
Mean: 7.5945 +/- 0.0056	Mean: 9.6593 +/- 0.0061	Mean: 7.6301 +/- 0.0089
Std Dev: 0.2183 +/- 0.0040	Std Dev: 0.3691 +/- 0.0043	Std Dev: 0.2153 +/- 0.0063

**Cycle 5, NegHel**

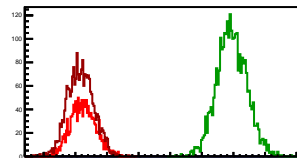
Entries: 788	Entries: 2973	Entries: 2002
Mean: 6.5408 +/- 0.0108	Mean: 9.3577 +/- 0.0063	Mean: 6.8861 +/- 0.0062
Std Dev: 0.3032 +/- 0.0076	Std Dev: 0.3462 +/- 0.0045	Std Dev: 0.2786 +/- 0.0044

**Cycle 6, NegHel**

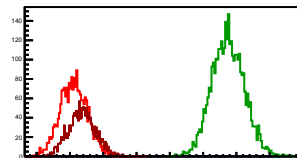
Entries: 2189	Entries: 3796	Entries: 2209
Mean: 6.8938 +/- 0.0074	Mean: 9.6648 +/- 0.0059	Mean: 6.8763 +/- 0.0092
Std Dev: 0.3471 +/- 0.0052	Std Dev: 0.3625 +/- 0.0042	Std Dev: 0.4303 +/- 0.0065

**Cycle 7, NegHel**

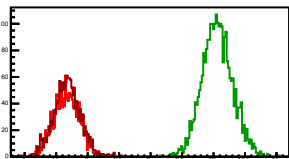
Entries: 1560	Entries: 2963	Entries: 2215
Mean: 7.5239 +/- 0.0050	Mean: 9.9744 +/- 0.0044	Mean: 7.5844 +/- 0.0044
Std Dev: 0.1974 +/- 0.0035	Std Dev: 0.2376 +/- 0.0031	Std Dev: 0.2063 +/- 0.0031

**Cycle 8, NegHel**

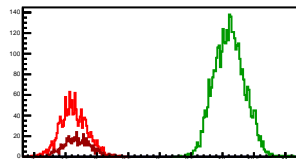
Entries: 2175	Entries: 3695	Entries: 1566
Mean: 7.5579 +/- 0.0044	Mean: 9.8752 +/- 0.0040	Mean: 7.6805 +/- 0.0051
Std Dev: 0.2057 +/- 0.0031	Std Dev: 0.2440 +/- 0.0028	Std Dev: 0.2031 +/- 0.0036

**Cycle 9, NegHel**

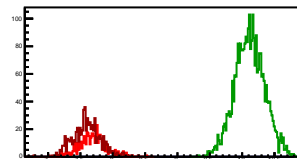
Entries: 1569	Entries: 2731	Entries: 1502
Mean: 7.6723 +/- 0.0051	Mean: 10.0604 +/- 0.0046	Mean: 7.6738 +/- 0.0055
Std Dev: 0.2036 +/- 0.0036	Std Dev: 0.2430 +/- 0.0033	Std Dev: 0.2122 +/- 0.0039

**Cycle 10, NegHel**

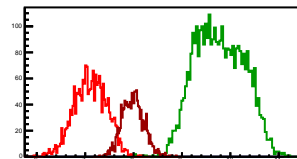
Entries: 1517	Entries: 3713	Entries: 601
Mean: 7.6295 +/- 0.0054	Mean: 10.1096 +/- 0.0039	Mean: 7.6851 +/- 0.0087
Std Dev: 0.2117 +/- 0.0038	Std Dev: 0.2397 +/- 0.0028	Std Dev: 0.2140 +/- 0.0062

**Cycle 11, NegHel**

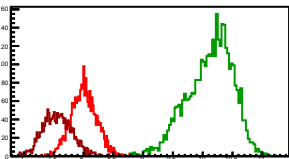
Entries: 457	Entries: 2932	Entries: 643
Mean: 7.6838 +/- 0.0095	Mean: 10.1165 +/- 0.0043	Mean: 7.5978 +/- 0.0084
Std Dev: 0.2039 +/- 0.0067	Std Dev: 0.2307 +/- 0.0030	Std Dev: 0.2143 +/- 0.0060

**Cycle 12, NegHel**

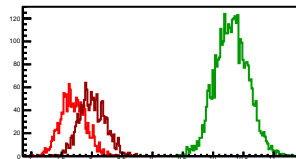
Entries: 2028	Entries: 3712	Entries: 1394
Mean: 7.1040 +/- 0.0074	Mean: 9.7763 +/- 0.0083	Mean: 7.9870 +/- 0.0060
Std Dev: 0.3345 +/- 0.0053	Std Dev: 0.5029 +/- 0.0058	Std Dev: 0.2236 +/- 0.0042

**Cycle 13, NegHel**

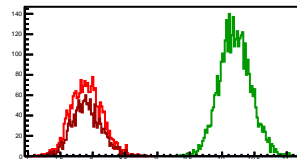
Entries: 2231	Entries: 3759	Entries: 1564
Mean: 8.0053 +/- 0.0045	Mean: 10.1195 +/- 0.0063	Mean: 7.3403 +/- 0.0061
Std Dev: 0.2127 +/- 0.0032	Std Dev: 0.3833 +/- 0.0044	Std Dev: 0.2412 +/- 0.0043

**Cycle 14, NegHel**

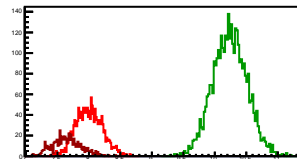
Entries: 1569	Entries: 3745	Entries: 1502
Mean: 7.6961 +/- 0.0052	Mean: 10.3064 +/- 0.0044	Mean: 8.0114 +/- 0.0056
Std Dev: 0.2078 +/- 0.0037	Std Dev: 0.2713 +/- 0.0031	Std Dev: 0.2161 +/- 0.0039

**Cycle 15, NegHel**

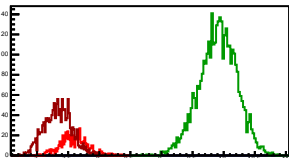
Entries: 2166	Entries: 3671	Entries: 1629
Mean: 7.9067 +/- 0.0052	Mean: 10.1995 +/- 0.0040	Mean: 7.9089 +/- 0.0057
Std Dev: 0.2400 +/- 0.0036	Std Dev: 0.2437 +/- 0.0028	Std Dev: 0.2292 +/- 0.0040

**Cycle 16, NegHel**

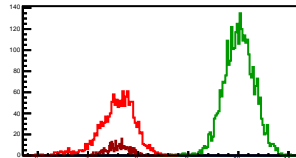
Entries: 1612	Entries: 3659	Entries: 610
Mean: 8.0029 +/- 0.0053	Mean: 10.2374 +/- 0.0045	Mean: 7.6489 +/- 0.0091
Std Dev: 0.2117 +/- 0.0037	Std Dev: 0.2719 +/- 0.0032	Std Dev: 0.2246 +/- 0.0064

**Cycle 17, NegHel**

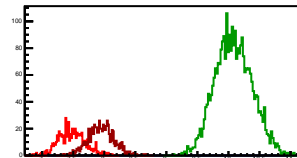
Entries: 602	Entries: 3707	Entries: 1418
Mean: 7.5980 +/- 0.0090	Mean: 9.9076 +/- 0.0050	Mean: 7.3403 +/- 0.0059
Std Dev: 0.2203 +/- 0.0063	Std Dev: 0.3030 +/- 0.0035	Std Dev: 0.2216 +/- 0.0042

**Cycle 18, NegHel**

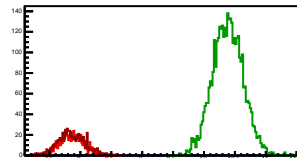
Entries: 1443	Entries: 3112	Entries: 328
Mean: 7.5806 +/- 0.0096	Mean: 10.0125 +/- 0.0054	Mean: 7.5995 +/- 0.0118
Std Dev: 0.3660 +/- 0.0068	Std Dev: 0.3015 +/- 0.0038	Std Dev: 0.2132 +/- 0.0083

**Cycle 19, NegHel**

Entries: 632	Entries: 3005	Entries: 698
Mean: 7.4794 +/- 0.0086	Mean: 10.0838 +/- 0.0054	Mean: 7.9489 +/- 0.0078
Std Dev: 0.2153 +/- 0.0061	Std Dev: 0.2976 +/- 0.0038	Std Dev: 0.2054 +/- 0.0055

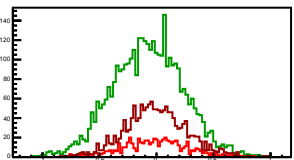
**Cycle 20, NegHel**

Entries: 679	Entries: 3771	Entries: 773
Mean: 7.8650 +/- 0.0079	Mean: 10.3849 +/- 0.0040	Mean: 7.8582 +/- 0.0080
Std Dev: 0.2053 +/- 0.0056	Std Dev: 0.2458 +/- 0.0028	Std Dev: 0.2221 +/- 0.0056



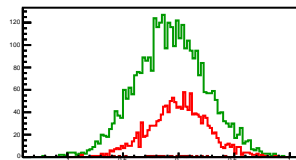
Cycle 1, Diffs

Entries: 605	Entries: 3779	Entries: 1549
Mean: -0.0102 +/- 0.0117	Mean: -0.0759 +/- 0.0051	Mean: -0.0080 +/- 0.0069
Std Dev: 0.2880 +/- 0.0083	Std Dev: 0.3109 +/- 0.0036	Std Dev: 0.2697 +/- 0.0048



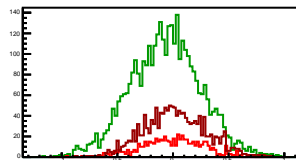
Cycle 2, Diffs

Entries: 1544	Entries: 3624	Entries: 27
Mean: -0.0002 +/- 0.0068	Mean: -0.0688 +/- 0.0053	Mean: -0.0854 +/- 0.0452
Std Dev: 0.2664 +/- 0.0048	Std Dev: 0.3167 +/- 0.0037	Std Dev: 0.2347 +/- 0.0319



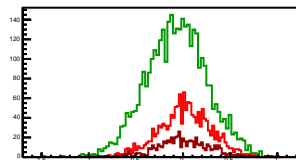
Cycle 3, Diffs

Entries: 621	Entries: 3687	Entries: 1515
Mean: -0.0067 +/- 0.0112	Mean: -0.0667 +/- 0.0052	Mean: 0.0161 +/- 0.0071
Std Dev: 0.2792 +/- 0.0079	Std Dev: 0.3160 +/- 0.0037	Std Dev: 0.2766 +/- 0.0050



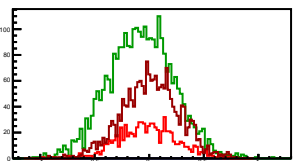
Cycle 4, Diffs

Entries: 1526	Entries: 3701	Entries: 586
Mean: 0.0147 +/- 0.0072	Mean: -0.0682 +/- 0.0053	Mean: 0.0011 +/- 0.0112
Std Dev: 0.2793 +/- 0.0051	Std Dev: 0.3228 +/- 0.0037	Std Dev: 0.2718 +/- 0.0079



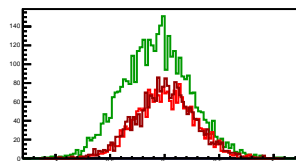
Cycle 5, Diffs

Entries: 788	Entries: 2973	Entries: 2002
Mean: -0.0106 +/- 0.0094	Mean: -0.0744 +/- 0.0055	Mean: 0.0120 +/- 0.0059
Std Dev: 0.2644 +/- 0.0067	Std Dev: 0.3000 +/- 0.0038	Std Dev: 0.2637 +/- 0.0042



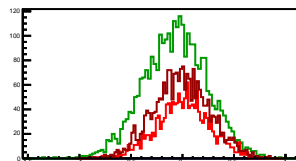
Cycle 6, Diffs

Entries: 2189	Entries: 3796	Entries: 2209
Mean: 0.0072 +/- 0.0056	Mean: -0.0736 +/- 0.0050	Mean: 0.0008 +/- 0.0058
Std Dev: 0.2643 +/- 0.0040	Std Dev: 0.3086 +/- 0.0035	Std Dev: 0.2737 +/- 0.0041



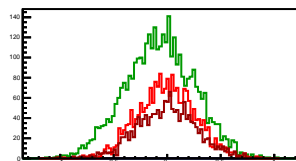
Cycle 7, Diffs

Entries: 1560	Entries: 2963	Entries: 2215
Mean: 0.0048 +/- 0.0067	Mean: -0.0681 +/- 0.0056	Mean: -0.0086 +/- 0.0057
Std Dev: 0.2633 +/- 0.0047	Std Dev: 0.3062 +/- 0.0040	Std Dev: 0.2698 +/- 0.0041



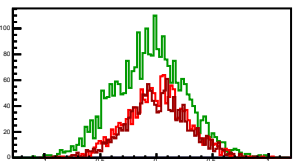
Cycle 8, Diffs

Entries: 2175	Entries: 3695	Entries: 1566
Mean: -0.0092 +/- 0.0058	Mean: -0.0711 +/- 0.0053	Mean: -0.0026 +/- 0.0070
Std Dev: 0.2684 +/- 0.0041	Std Dev: 0.3203 +/- 0.0037	Std Dev: 0.2764 +/- 0.0049



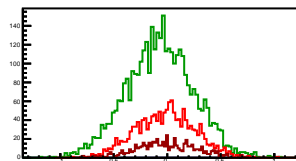
Cycle 9, Diffs

Entries: 1569	Entries: 2731	Entries: 1502
Mean: 0.0085 +/- 0.0069	Mean: -0.0584 +/- 0.0060	Mean: 0.0056 +/- 0.0070
Std Dev: 0.2733 +/- 0.0049	Std Dev: 0.3155 +/- 0.0043	Std Dev: 0.2713 +/- 0.0050



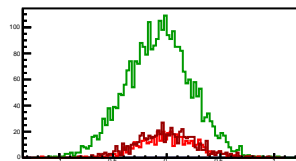
Cycle 10, Diffs

Entries: 1517	Entries: 3713	Entries: 601
Mean: -0.0175 +/- 0.0071	Mean: -0.0698 +/- 0.0051	Mean: -0.0101 +/- 0.0114
Std Dev: 0.2766 +/- 0.0050	Std Dev: 0.3132 +/- 0.0036	Std Dev: 0.2787 +/- 0.0080



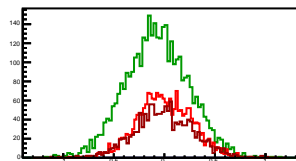
Cycle 11, Diffs

Entries: 457	Entries: 2932	Entries: 643
Mean: 0.0202 +/- 0.0127	Mean: -0.0735 +/- 0.0056	Mean: -0.0087 +/- 0.0109
Std Dev: 0.2711 +/- 0.0090	Std Dev: 0.3032 +/- 0.0040	Std Dev: 0.2761 +/- 0.0077



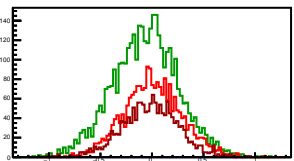
Cycle 12, Diffs

Entries: 2020	Entries: 3712	Entries: 1394
Mean: 0.0018 +/- 0.0059	Mean: -0.0731 +/- 0.0051	Mean: -0.0054 +/- 0.0078
Std Dev: 0.2672 +/- 0.0042	Std Dev: 0.3110 +/- 0.0036	Std Dev: 0.2927 +/- 0.0055



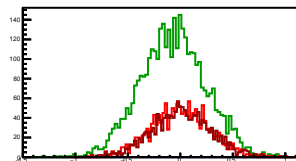
Cycle 13, Diffs

Entries: 2231	Entries: 3759	Entries: 1564
Mean: 0.0068 +/- 0.0059	Mean: -0.0644 +/- 0.0052	Mean: -0.0181 +/- 0.0070
Std Dev: 0.2785 +/- 0.0042	Std Dev: 0.3179 +/- 0.0037	Std Dev: 0.2758 +/- 0.0049



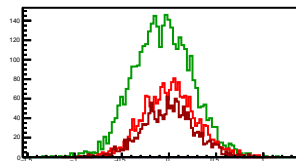
Cycle 14, Diffs

Entries: 1569	Entries: 3745	Entries: 1502
Mean: -0.0002 +/- 0.0071	Mean: -0.0683 +/- 0.0051	Mean: 0.0081 +/- 0.0072
Std Dev: 0.2805 +/- 0.0050	Std Dev: 0.3122 +/- 0.0036	Std Dev: 0.2786 +/- 0.0051



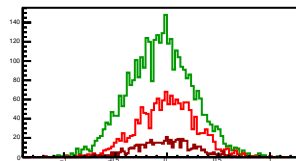
Cycle 15, Diffs

Entries: 2166	Entries: 3671	Entries: 1629
Mean: 0.0084 +/- 0.0060	Mean: -0.0683 +/- 0.0051	Mean: -0.0094 +/- 0.0069
Std Dev: 0.2806 +/- 0.0043	Std Dev: 0.3096 +/- 0.0036	Std Dev: 0.2791 +/- 0.0049



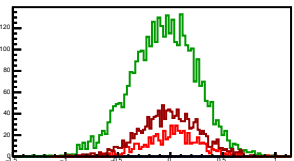
Cycle 16, Diffs

Entries: 1612	Entries: 3659	Entries: 610
Mean: -0.0004 +/- 0.0071	Mean: -0.0627 +/- 0.0052	Mean: -0.0191 +/- 0.0111
Std Dev: 0.2862 +/- 0.0050	Std Dev: 0.3144 +/- 0.0037	Std Dev: 0.2744 +/- 0.0079



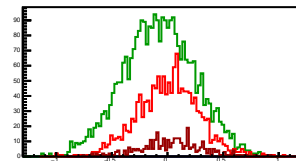
Cycle 17, Diffs

Entries: 602	Entries: 3707	Entries: 1418
Mean: 0.0123 +/- 0.0112	Mean: -0.0623 +/- 0.0052	Mean: -0.0083 +/- 0.0074
Std Dev: 0.2743 +/- 0.0079	Std Dev: 0.3136 +/- 0.0036	Std Dev: 0.2800 +/- 0.0053



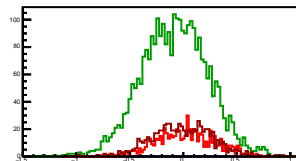
Cycle 18, Diffs

Entries: 1443	Entries: 3112	Entries: 328
Mean: 0.0046 +/- 0.0073	Mean: -0.0761 +/- 0.0057	Mean: 0.0307 +/- 0.0153
Std Dev: 0.2769 +/- 0.0052	Std Dev: 0.3202 +/- 0.0041	Std Dev: 0.2767 +/- 0.0108



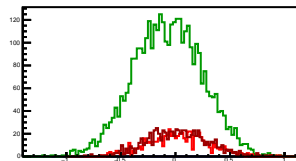
Cycle 19, Diffs

Entries: 632	Entries: 3005	Entries: 698
Mean: 0.0097 +/- 0.0109	Mean: -0.0790 +/- 0.0057	Mean: -0.0094 +/- 0.0103
Std Dev: 0.2747 +/- 0.0077	Std Dev: 0.3103 +/- 0.0040	Std Dev: 0.2731 +/- 0.0073



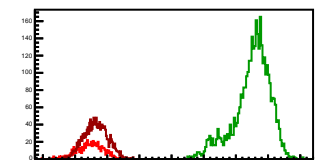
Cycle 20, Diffs

Entries: 679	Entries: 3771	Entries: 773
Mean: 0.0238 +/- 0.0107	Mean: -0.0697 +/- 0.0051	Mean: 0.0169 +/- 0.0099
Std Dev: 0.2778 +/- 0.0075	Std Dev: 0.3138 +/- 0.0036	Std Dev: 0.2744 +/- 0.0070



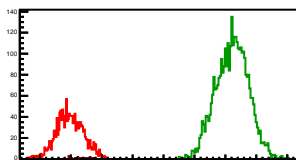
Cycle 1, Sums

Entries: 605	Entries: 3779	Entries: 1549
Mean: 14.4567 +/- 0.0166	Mean: 19.5023 +/- 0.0093	Mean: 14.6414 +/- 0.0094
Std Dev: 0.4075 +/- 0.0117	Std Dev: 0.5710 +/- 0.0066	Std Dev: 0.3696 +/- 0.0066



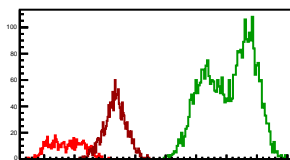
Cycle 2, Sums

Entries: 1544	Entries: 3624	Entries: 27
Mean: 13.9703 +/- 0.0113	Mean: 19.2189 +/- 0.0067	Mean: 14.3456 +/- 0.0524
Std Dev: 0.4440 +/- 0.0080	Std Dev: 0.5234 +/- 0.0061	Std Dev: 0.2721 +/- 0.0370



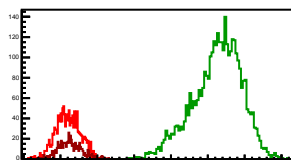
Cycle 3, Sums

Entries: 621	Entries: 3687	Entries: 1515
Mean: 13.7431 +/- 0.0218	Mean: 19.0801 +/- 0.0132	Mean: 15.3397 +/- 0.0094
Std Dev: 0.5424 +/- 0.0154	Std Dev: 0.8021 +/- 0.0093	Std Dev: 0.3662 +/- 0.0067



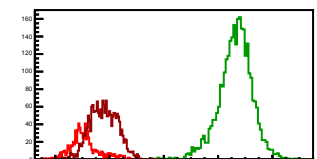
Cycle 4, Sums

Entries: 1526	Entries: 3701	Entries: 586
Mean: 15.2036 +/- 0.0084	Mean: 19.2503 +/- 0.0109	Mean: 15.2613 +/- 0.0132
Std Dev: 0.3298 +/- 0.0060	Std Dev: 0.6643 +/- 0.0077	Std Dev: 0.3194 +/- 0.0093



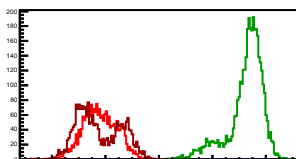
Cycle 5, Sums

Entries: 788	Entries: 2973	Entries: 2002
Mean: 13.0710 +/- 0.0191	Mean: 18.6411 +/- 0.0114	Mean: 13.7841 +/- 0.0113
Std Dev: 0.5354 +/- 0.0135	Std Dev: 0.6219 +/- 0.0081	Std Dev: 0.5053 +/- 0.0080



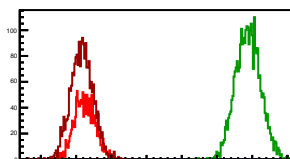
Cycle 6, Sums

Entries: 2189	Entries: 3796	Entries: 2209
Mean: 13.7948 +/- 0.0136	Mean: 19.2559 +/- 0.0107	Mean: 13.7534 +/- 0.0174
Std Dev: 0.6378 +/- 0.0096	Std Dev: 0.6597 +/- 0.0076	Std Dev: 0.6172 +/- 0.0123



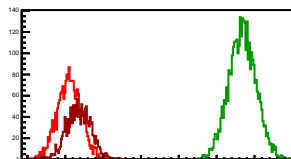
Cycle 7, Sums

Entries: 1560	Entries: 2963	Entries: 2215
Mean: 15.2527 +/- 0.0075	Mean: 19.8808 +/- 0.0065	Mean: 15.1601 +/- 0.0067
Std Dev: 0.2970 +/- 0.0053	Std Dev: 0.3523 +/- 0.0046	Std Dev: 0.3156 +/- 0.0047



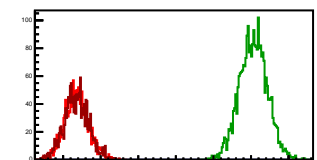
Cycle 8, Sums

Entries: 2175	Entries: 3695	Entries: 1566
Mean: 15.1067 +/- 0.0068	Mean: 19.6793 +/- 0.0060	Mean: 15.3583 +/- 0.0080
Std Dev: 0.3165 +/- 0.0048	Std Dev: 0.3638 +/- 0.0042	Std Dev: 0.3176 +/- 0.0057



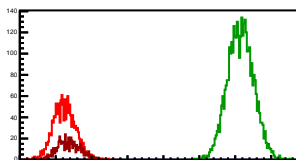
Cycle 9, Sums

Entries: 1569	Entries: 2731	Entries: 1502
Mean: 15.3531 +/- 0.0079	Mean: 20.0625 +/- 0.0071	Mean: 15.3533 +/- 0.0083
Std Dev: 0.3148 +/- 0.0056	Std Dev: 0.3711 +/- 0.0050	Std Dev: 0.3211 +/- 0.0059



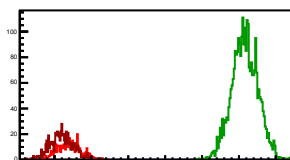
Cycle 10, Sums

Entries: 1517	Entries: 3713	Entries: 601
Mean: 15.2416 +/- 0.0080	Mean: 20.1494 +/- 0.0059	Mean: 15.3601 +/- 0.0128
Std Dev: 0.3109 +/- 0.0056	Std Dev: 0.3613 +/- 0.0042	Std Dev: 0.3135 +/- 0.0090



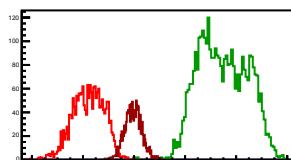
Cycle 11, Sums

Entries: 457	Entries: 2932	Entries: 643
Mean: 15.3879 +/- 0.0141	Mean: 20.1596 +/- 0.0065	Mean: 15.1670 +/- 0.0128
Std Dev: 0.3009 +/- 0.0100	Std Dev: 0.3546 +/- 0.0046	Std Dev: 0.3235 +/- 0.0090



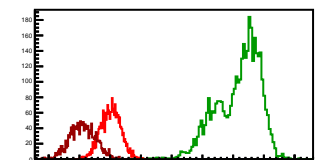
Cycle 12, Sums

Entries: 2020	Entries: 3712	Entries: 1394
Mean: 14.2098 +/- 0.0136	Mean: 19.4796 +/- 0.0156	Mean: 15.9685 +/- 0.0088
Std Dev: 0.6114 +/- 0.0096	Std Dev: 0.9516 +/- 0.0110	Std Dev: 0.3285 +/- 0.0062



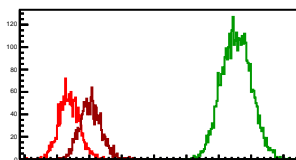
Cycle 13, Sums

Entries: 2231	Entries: 3759	Entries: 1564
Mean: 16.0175 +/- 0.0135	Mean: 20.1745 +/- 0.0114	Mean: 15.3533 +/- 0.0104
Std Dev: 0.3252 +/- 0.0049	Std Dev: 0.7007 +/- 0.0081	Std Dev: 0.4098 +/- 0.0073



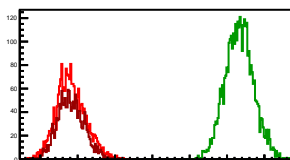
Cycle 14, Sums

Entries: 1569	Entries: 3745	Entries: 1502
Mean: 15.3799 +/- 0.0078	Mean: 20.5445 +/- 0.0074	Mean: 16.0310 +/- 0.0084
Std Dev: 0.3093 +/- 0.0055	Std Dev: 0.4520 +/- 0.0052	Std Dev: 0.3271 +/- 0.0060



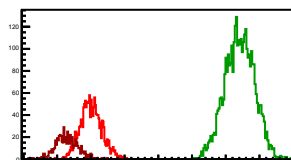
Cycle 15, Sums

Entries: 2166	Entries: 3671	Entries: 1629
Mean: 15.8217 +/- 0.0084	Mean: 20.3307 +/- 0.0062	Mean: 15.8158 +/- 0.0067
Std Dev: 0.3906 +/- 0.0059	Std Dev: 0.3783 +/- 0.0044	Std Dev: 0.3492 +/- 0.0061



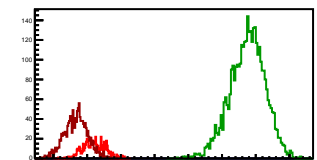
Cycle 16, Sums

Entries: 1612	Entries: 3659	Entries: 610
Mean: 16.0054 +/- 0.0080	Mean: 20.4120 +/- 0.0072	Mean: 15.2786 +/- 0.0136
Std Dev: 0.3229 +/- 0.0057	Std Dev: 0.4349 +/- 0.0051	Std Dev: 0.3359 +/- 0.0096



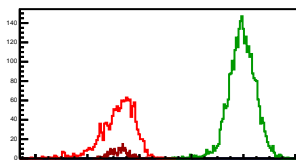
Cycle 17, Sums

Entries: 602	Entries: 3707	Entries: 1418
Mean: 15.2082 +/- 0.0135	Mean: 19.7520 +/- 0.0085	Mean: 14.6723 +/- 0.0091
Std Dev: 0.3300 +/- 0.0095	Std Dev: 0.5196 +/- 0.0060	Std Dev: 0.3443 +/- 0.0065



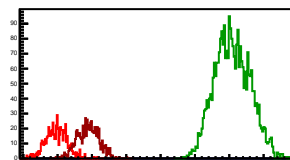
Cycle 18, Sums

Entries: 1443	Entries: 3112	Entries: 328
Mean: 15.1658 +/- 0.0180	Mean: 19.9488 +/- 0.0093	Mean: 15.2297 +/- 0.0180
Std Dev: 0.6844 +/- 0.0127	Std Dev: 0.5172 +/- 0.0066	Std Dev: 0.3261 +/- 0.0127



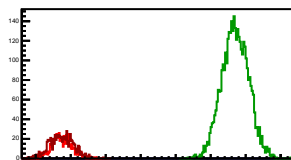
Cycle 19, Sums

Entries: 632	Entries: 3005	Entries: 698
Mean: 14.9685 +/- 0.0126	Mean: 20.0886 +/- 0.0093	Mean: 15.8884 +/- 0.0119
Std Dev: 0.3168 +/- 0.0089	Std Dev: 0.5114 +/- 0.0066	Std Dev: 0.3149 +/- 0.0084



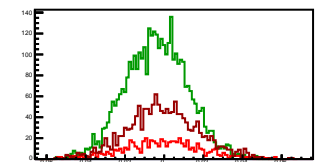
Cycle 20, Sums

Entries: 679	Entries: 3771	Entries: 773
Mean: 15.7539 +/- 0.0112	Mean: 20.7000 +/- 0.0062	Mean: 15.7333 +/- 0.0122
Std Dev: 0.2925 +/- 0.0079	Std Dev: 0.3803 +/- 0.0044	Std Dev: 0.3388 +/- 0.0086



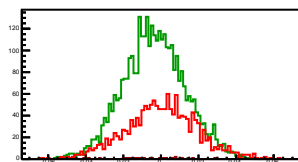
Cycle 1, Asyms

Entries: 605	Entries: 3779	Entries: 1549
Mean: -0.0007 +/- 0.0008	Mean: -0.0039 +/- 0.0003	Mean: -0.0005 +/- 0.0005
Std Dev: 0.0199 +/- 0.0006	Std Dev: 0.0159 +/- 0.0002	Std Dev: 0.0184 +/- 0.0003



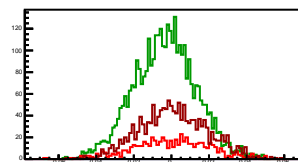
Cycle 2, Asyms

Entries: 1544	Entries: 3624	Entries: 27
Mean: 0.0000 +/- 0.0005	Mean: -0.0036 +/- 0.0003	Mean: -0.0060 +/- 0.0032
Std Dev: 0.0191 +/- 0.0003	Std Dev: 0.0165 +/- 0.0002	Std Dev: 0.0164 +/- 0.0022



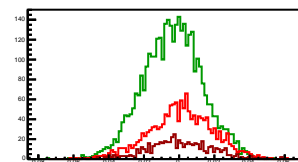
Cycle 3, Asyms

Entries: 621	Entries: 3687	Entries: 1515
Mean: -0.0005 +/- 0.0008	Mean: -0.0035 +/- 0.0003	Mean: 0.0011 +/- 0.0005
Std Dev: 0.0203 +/- 0.0006	Std Dev: 0.0166 +/- 0.0002	Std Dev: 0.0180 +/- 0.0003



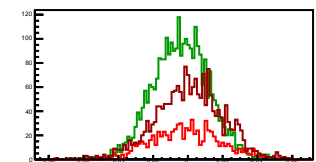
Cycle 4, Asyms

Entries: 1526	Entries: 3701	Entries: 586
Mean: 0.0010 +/- 0.0005	Mean: -0.0035 +/- 0.0003	Mean: 0.0001 +/- 0.0007
Std Dev: 0.0183 +/- 0.0003	Std Dev: 0.0168 +/- 0.0002	Std Dev: 0.0178 +/- 0.0005



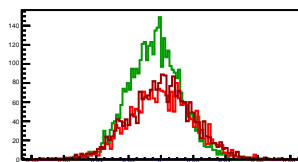
Cycle 5, Asyms

Entries: 788	Entries: 2973	Entries: 2002
Mean: -0.0008 +/- 0.0007	Mean: -0.0040 +/- 0.0003	Mean: 0.0008 +/- 0.0004
Std Dev: 0.0202 +/- 0.0005	Std Dev: 0.0151 +/- 0.0002	Std Dev: 0.0191 +/- 0.0003



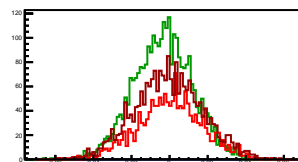
Cycle 6, Asyms

Entries: 2189	Entries: 3796	Entries: 2209
Mean: 0.0005 +/- 0.0004	Mean: -0.0038 +/- 0.0003	Mean: 0.0001 +/- 0.0004
Std Dev: 0.0182 +/- 0.0003	Std Dev: 0.0160 +/- 0.0002	Std Dev: 0.0199 +/- 0.0003



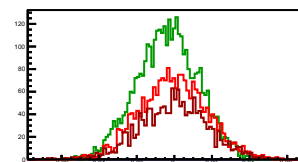
Cycle 7, Asyms

Entries: 1560	Entries: 2963	Entries: 2215
Mean: 0.0003 +/- 0.0004	Mean: -0.0034 +/- 0.0003	Mean: -0.0006 +/- 0.0004
Std Dev: 0.0172 +/- 0.0003	Std Dev: 0.0154 +/- 0.0002	Std Dev: 0.0178 +/- 0.0003



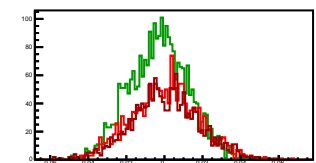
Cycle 8, Asyms

Entries: 2175	Entries: 3695	Entries: 1566
Mean: -0.0006 +/- 0.0004	Mean: -0.0036 +/- 0.0003	Mean: -0.0002 +/- 0.0005
Std Dev: 0.0178 +/- 0.0003	Std Dev: 0.0163 +/- 0.0002	Std Dev: 0.0180 +/- 0.0003



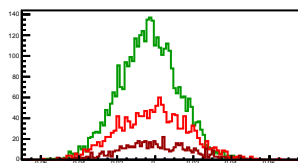
Cycle 9, Asyms

Entries: 1569	Entries: 2731	Entries: 1502
Mean: 0.0005 +/- 0.0004	Mean: -0.0029 +/- 0.0003	Mean: 0.0004 +/- 0.0005
Std Dev: 0.0178 +/- 0.0003	Std Dev: 0.0157 +/- 0.0002	Std Dev: 0.0177 +/- 0.0003



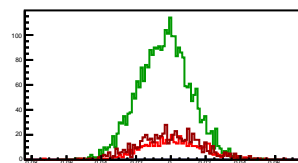
Cycle 10, Asyms

Entries: 1517	Entries: 3713	Entries: 601
Mean: -0.0011 +/- 0.0005	Mean: -0.0035 +/- 0.0003	Mean: -0.0006 +/- 0.0007
Std Dev: 0.0181 +/- 0.0003	Std Dev: 0.0155 +/- 0.0002	Std Dev: 0.0181 +/- 0.0005



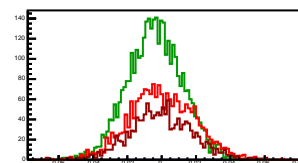
Cycle 11, Asyms

Entries: 457	Entries: 2932	Entries: 643
Mean: 0.0013 +/- 0.0008	Mean: -0.0037 +/- 0.0003	Mean: -0.0006 +/- 0.0007
Std Dev: 0.0175 +/- 0.0006	Std Dev: 0.0150 +/- 0.0002	Std Dev: 0.0182 +/- 0.0005



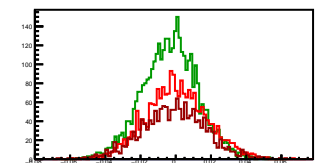
Cycle 12, Asyms

Entries: 2028	Entries: 3712	Entries: 1394
Mean: 0.0001 +/- 0.0004	Mean: -0.0037 +/- 0.0003	Mean: -0.0003 +/- 0.0005
Std Dev: 0.0188 +/- 0.0003	Std Dev: 0.0160 +/- 0.0002	Std Dev: 0.0183 +/- 0.0003



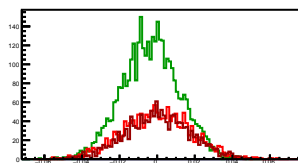
Cycle 13, Asyms

Entries: 2231	Entries: 3759	Entries: 1564
Mean: 0.0004 +/- 0.0004	Mean: -0.0032 +/- 0.0003	Mean: -0.0012 +/- 0.0005
Std Dev: 0.0174 +/- 0.0003	Std Dev: 0.0158 +/- 0.0002	Std Dev: 0.0182 +/- 0.0003



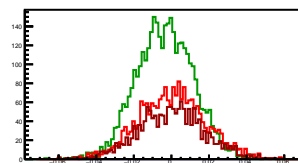
Cycle 14, Asyms

Entries: 1569	Entries: 3745	Entries: 1502
Mean: -0.0000 +/- 0.0005	Mean: -0.0033 +/- 0.0003	Mean: 0.0020 +/- 0.0004
Std Dev: 0.0182 +/- 0.0003	Std Dev: 0.0152 +/- 0.0002	Std Dev: 0.0173 +/- 0.0003



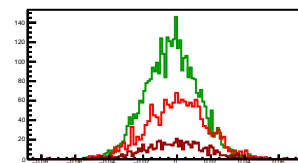
Cycle 15, Asyms

Entries: 2166	Entries: 3671	Entries: 1629
Mean: 0.0005 +/- 0.0004	Mean: -0.0034 +/- 0.0003	Mean: -0.0001 +/- 0.0004
Std Dev: 0.0177 +/- 0.0003	Std Dev: 0.0152 +/- 0.0002	Std Dev: 0.0176 +/- 0.0003



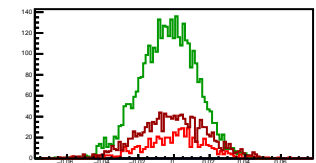
Cycle 16, Asyms

Entries: 1612	Entries: 3659	Entries: 610
Mean: -0.0000 +/- 0.0004	Mean: -0.0031 +/- 0.0003	Mean: -0.0012 +/- 0.0007
Std Dev: 0.0179 +/- 0.0003	Std Dev: 0.0154 +/- 0.0002	Std Dev: 0.0179 +/- 0.0005



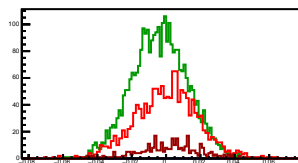
Cycle 17, Asyms

Entries: 602	Entries: 3707	Entries: 1418
Mean: 0.0008 +/- 0.0007	Mean: -0.0032 +/- 0.0003	Mean: -0.0006 +/- 0.0005
Std Dev: 0.0180 +/- 0.0005	Std Dev: 0.0159 +/- 0.0002	Std Dev: 0.0190 +/- 0.0004



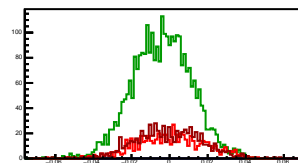
Cycle 18, Asyms

Entries: 1443	Entries: 3112	Entries: 328
Mean: 0.0003 +/- 0.0005	Mean: -0.0038 +/- 0.0003	Mean: 0.0020 +/- 0.0010
Std Dev: 0.0183 +/- 0.0003	Std Dev: 0.0160 +/- 0.0002	Std Dev: 0.0181 +/- 0.0007



Cycle 19, Asyms

Entries: 632	Entries: 3005	Entries: 698
Mean: 0.0007 +/- 0.0007	Mean: -0.0039 +/- 0.0003	Mean: -0.0006 +/- 0.0006
Std Dev: 0.0183 +/- 0.0005	Std Dev: 0.0155 +/- 0.0002	Std Dev: 0.0172 +/- 0.0005



Cycle 20, Asyms

Entries: 679	Entries: 3771	Entries: 773
Mean: 0.0015 +/- 0.0007	Mean: -0.0034 +/- 0.0002	Mean: 0.0011 +/- 0.0006
Std Dev: 0.0176 +/- 0.0005	Std Dev: 0.0151 +/- 0.0002	Std Dev: 0.0174 +/- 0.0004

