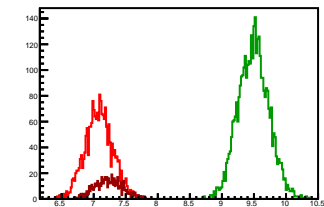


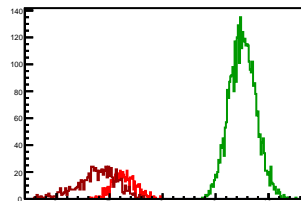
Cycle 1, PosHel

Entries: 2063	Entries: 3708	Entries: 606
Mean: 7.0614 +/- 0.0048	Mean: 9.4937 +/- 0.0039	Mean: 7.2285 +/- 0.0085
Std Dev: 0.2159 +/- 0.0034	Std Dev: 0.2374 +/- 0.0028	Std Dev: 0.2089 +/- 0.0060



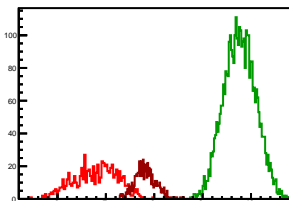
Cycle 2, PosHel

Entries: 621	Entries: 3746	Entries: 769
Mean: 7.2659 +/- 0.0088	Mean: 9.5094 +/- 0.0041	Mean: 6.7631 +/- 0.0136
Std Dev: 0.2196 +/- 0.0062	Std Dev: 0.2522 +/- 0.0029	Std Dev: 0.3781 +/- 0.0096



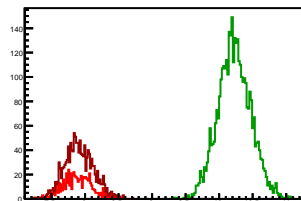
Cycle 3, PosHel

Entries: 732	Entries: 3693	Entries: 628
Mean: 6.7938 +/- 0.0166	Mean: 9.7669 +/- 0.0054	Mean: 7.8155 +/- 0.0085
Std Dev: 0.4490 +/- 0.0117	Std Dev: 0.3287 +/- 0.0038	Std Dev: 0.2133 +/- 0.0060



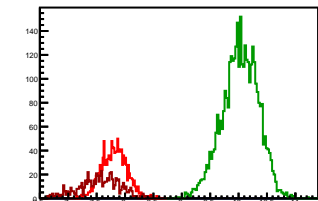
Cycle 4, PosHel

Entries: 632	Entries: 3723	Entries: 1383
Mean: 7.8823 +/- 0.0086	Mean: 10.2284 +/- 0.0040	Mean: 7.9092 +/- 0.0059
Std Dev: 0.2167 +/- 0.0061	Std Dev: 0.2441 +/- 0.0028	Std Dev: 0.2179 +/- 0.0041



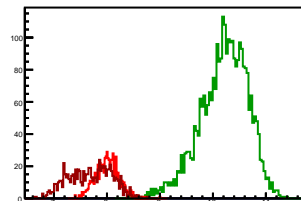
Cycle 5, PosHel

Entries: 1369	Entries: 3773	Entries: 690
Mean: 7.8107 +/- 0.0060	Mean: 10.0265 +/- 0.0052	Mean: 7.5473 +/- 0.0136
Std Dev: 0.2224 +/- 0.0043	Std Dev: 0.3176 +/- 0.0037	Std Dev: 0.3572 +/- 0.0096



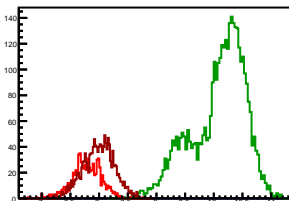
Cycle 6, PosHel

Entries: 675	Entries: 2998	Entries: 783
Mean: 8.0010 +/- 0.0083	Mean: 10.2086 +/- 0.0062	Mean: 7.6824 +/- 0.0143
Std Dev: 0.2166 +/- 0.0059	Std Dev: 0.4484 +/- 0.0058	Std Dev: 0.4009 +/- 0.0101



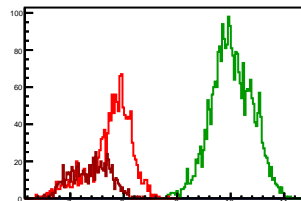
Cycle 7, PosHel

Entries: 745	Entries: 3784	Entries: 1433
Mean: 7.7818 +/- 0.0094	Mean: 10.0825 +/- 0.0076	Mean: 7.9928 +/- 0.0071
Std Dev: 0.2579 +/- 0.0067	Std Dev: 0.4685 +/- 0.0054	Std Dev: 0.2693 +/- 0.0050



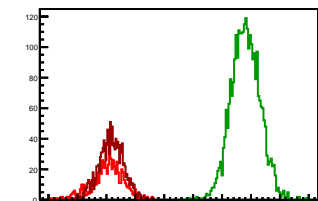
Cycle 8, PosHel

Entries: 1429	Entries: 2927	Entries: 735
Mean: 7.7571 +/- 0.0107	Mean: 10.0197 +/- 0.0071	Mean: 7.3785 +/- 0.0133
Std Dev: 0.4031 +/- 0.0075	Std Dev: 0.3833 +/- 0.0050	Std Dev: 0.3596 +/- 0.0094



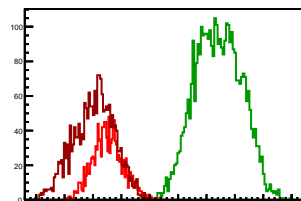
Cycle 9, PosHel

Entries: 701	Entries: 2932	Entries: 1351
Mean: 7.5134 +/- 0.0107	Mean: 9.9958 +/- 0.0046	Mean: 7.5850 +/- 0.0059
Std Dev: 0.2843 +/- 0.0076	Std Dev: 0.2502 +/- 0.0033	Std Dev: 0.2158 +/- 0.0042



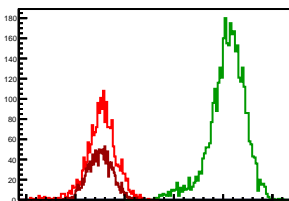
Cycle 10, PosHel

Entries: 1343	Entries: 3776	Entries: 2151
Mean: 7.7619 +/- 0.0073	Mean: 9.7055 +/- 0.0066	Mean: 7.5222 +/- 0.0078
Std Dev: 0.2671 +/- 0.0052	Std Dev: 0.4049 +/- 0.0047	Std Dev: 0.3608 +/- 0.0055



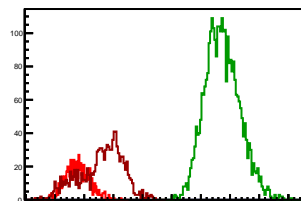
Cycle 11, PosHel

Entries: 2113	Entries: 3718	Entries: 1542
Mean: 7.5231 +/- 0.0067	Mean: 10.0803 +/- 0.0060	Mean: 7.5025 +/- 0.0063
Std Dev: 0.3067 +/- 0.0047	Std Dev: 0.3689 +/- 0.0043	Std Dev: 0.2454 +/- 0.0044



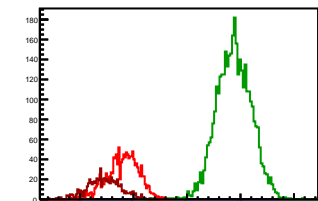
Cycle 12, PosHel

Entries: 616	Entries: 3117	Entries: 1119
Mean: 7.3859 +/- 0.0087	Mean: 9.8679 +/- 0.0053	Mean: 7.7932 +/- 0.0112
Std Dev: 0.2156 +/- 0.0061	Std Dev: 0.2984 +/- 0.0038	Std Dev: 0.3744 +/- 0.0079



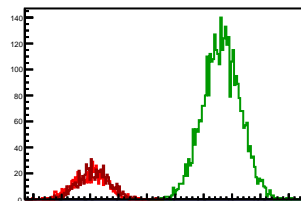
Cycle 13, PosHel

Entries: 1377	Entries: 3725	Entries: 710
Mean: 7.8002 +/- 0.0080	Mean: 9.8765 +/- 0.0053	Mean: 7.4508 +/- 0.0115
Std Dev: 0.2954 +/- 0.0056	Std Dev: 0.3211 +/- 0.0037	Std Dev: 0.3074 +/- 0.0082



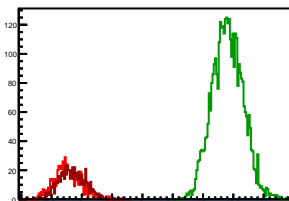
Cycle 14, PosHel

Entries: 695	Entries: 3742	Entries: 708
Mean: 7.5021 +/- 0.0112	Mean: 9.8146 +/- 0.0053	Mean: 7.5659 +/- 0.0102
Std Dev: 0.2965 +/- 0.0080	Std Dev: 0.3269 +/- 0.0038	Std Dev: 0.2723 +/- 0.0072



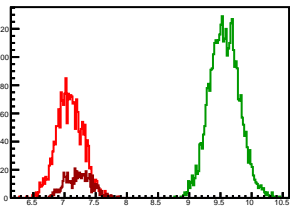
Cycle 15, PosHel

Entries: 688	Entries: 3749	Entries: 652
Mean: 7.7702 +/- 0.0089	Mean: 10.4068 +/- 0.0041	Mean: 7.8346 +/- 0.0083
Std Dev: 0.2326 +/- 0.0063	Std Dev: 0.2533 +/- 0.0029	Std Dev: 0.2127 +/- 0.0059



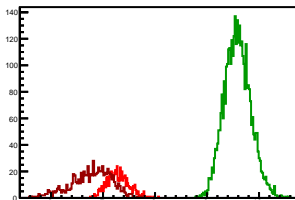
Cycle 1, NegHel

Entries: 2063	Entries: 3708	Entries: 606
Mean: 7.0627 +/- 0.0047	Mean: 9.5640 +/- 0.0039	Mean: 7.2246 +/- 0.0084
Std Dev: 0.2120 +/- 0.0033	Std Dev: 0.2378 +/- 0.0028	Std Dev: 0.2061 +/- 0.0059



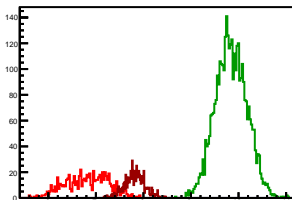
Cycle 2, NegHel

Entries: 621	Entries: 3746	Entries: 769
Mean: 7.2917 +/- 0.0087	Mean: 9.5848 +/- 0.0041	Mean: 6.7719 +/- 0.0140
Std Dev: 0.2164 +/- 0.0061	Std Dev: 0.2539 +/- 0.0029	Std Dev: 0.3883 +/- 0.0099



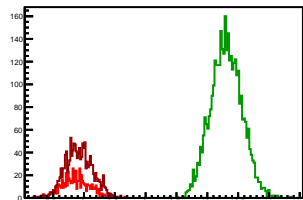
Cycle 3, NegHel

Entries: 732	Entries: 3693	Entries: 628
Mean: 6.8118 +/- 0.0168	Mean: 9.8430 +/- 0.0054	Mean: 7.8169 +/- 0.0084
Std Dev: 0.4545 +/- 0.0119	Std Dev: 0.3295 +/- 0.0038	Std Dev: 0.2113 +/- 0.0060



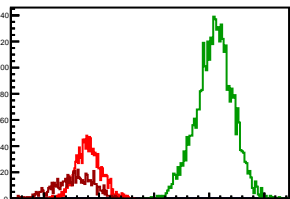
Cycle 4, NegHel

Entries: 632	Entries: 3723	Entries: 1383
Mean: 7.8741 +/- 0.0089	Mean: 10.3068 +/- 0.0041	Mean: 7.9184 +/- 0.0059
Std Dev: 0.2242 +/- 0.0063	Std Dev: 0.2519 +/- 0.0029	Std Dev: 0.2200 +/- 0.0042



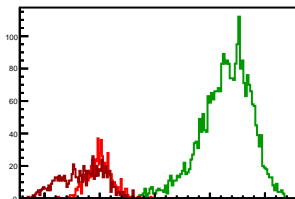
Cycle 5, NegHel

Entries: 1369	Entries: 3773	Entries: 690
Mean: 7.8124 +/- 0.0060	Mean: 10.0967 +/- 0.0053	Mean: 7.5429 +/- 0.0130
Std Dev: 0.2233 +/- 0.0043	Std Dev: 0.3280 +/- 0.0038	Std Dev: 0.3419 +/- 0.0092



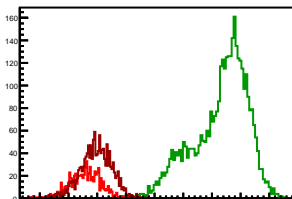
Cycle 6, NegHel

Entries: 675	Entries: 2998	Entries: 783
Mean: 7.9911 +/- 0.0085	Mean: 10.2903 +/- 0.0083	Mean: 7.6856 +/- 0.0142
Std Dev: 0.2211 +/- 0.0060	Std Dev: 0.4528 +/- 0.0058	Std Dev: 0.3961 +/- 0.0100



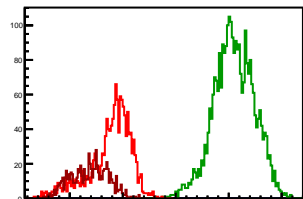
Cycle 7, NegHel

Entries: 745	Entries: 3784	Entries: 1433
Mean: 7.7862 +/- 0.0101	Mean: 10.1499 +/- 0.0077	Mean: 7.9795 +/- 0.0071
Std Dev: 0.2751 +/- 0.0071	Std Dev: 0.4744 +/- 0.0055	Std Dev: 0.2691 +/- 0.0050



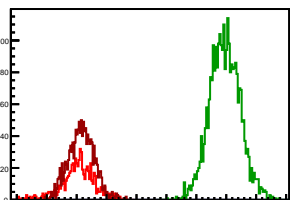
Cycle 8, NegHel

Entries: 1429	Entries: 2927	Entries: 735
Mean: 7.7672 +/- 0.0106	Mean: 10.0978 +/- 0.0071	Mean: 7.3684 +/- 0.0129
Std Dev: 0.4017 +/- 0.0075	Std Dev: 0.3815 +/- 0.0050	Std Dev: 0.3489 +/- 0.0091



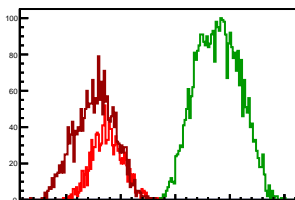
Cycle 9, NegHel

Entries: 701	Entries: 2932	Entries: 1351
Mean: 7.5195 +/- 0.0105	Mean: 9.9742 +/- 0.0047	Mean: 7.5798 +/- 0.0059
Std Dev: 0.2791 +/- 0.0075	Std Dev: 0.2544 +/- 0.0033	Std Dev: 0.2183 +/- 0.0042



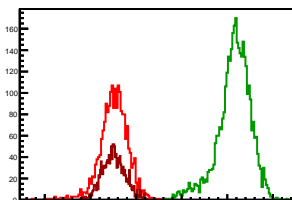
Cycle 10, NegHel

Entries: 1343	Entries: 3776	Entries: 2151
Mean: 7.7529 +/- 0.0076	Mean: 9.7806 +/- 0.0066	Mean: 7.5249 +/- 0.0079
Std Dev: 0.2793 +/- 0.0054	Std Dev: 0.4036 +/- 0.0046	Std Dev: 0.3655 +/- 0.0056



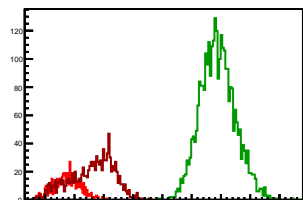
Cycle 11, NegHel

Entries: 2113	Entries: 3718	Entries: 1542
Mean: 7.5121 +/- 0.0067	Mean: 10.1468 +/- 0.0060	Mean: 7.5095 +/- 0.0063
Std Dev: 0.3079 +/- 0.0047	Std Dev: 0.3677 +/- 0.0043	Std Dev: 0.2486 +/- 0.0045



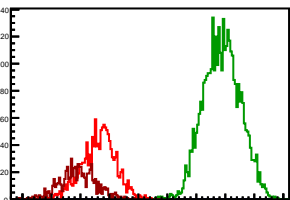
Cycle 12, NegHel

Entries: 616	Entries: 3117	Entries: 1119
Mean: 7.3779 +/- 0.0089	Mean: 9.9460 +/- 0.0053	Mean: 7.7970 +/- 0.0112
Std Dev: 0.2198 +/- 0.0063	Std Dev: 0.2976 +/- 0.0038	Std Dev: 0.3757 +/- 0.0079



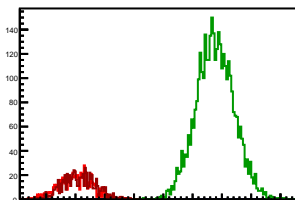
Cycle 13, NegHel

Entries: 1377	Entries: 3725	Entries: 710
Mean: 7.8127 +/- 0.0080	Mean: 9.9402 +/- 0.0052	Mean: 7.4548 +/- 0.0118
Std Dev: 0.2977 +/- 0.0057	Std Dev: 0.3174 +/- 0.0037	Std Dev: 0.3133 +/- 0.0083



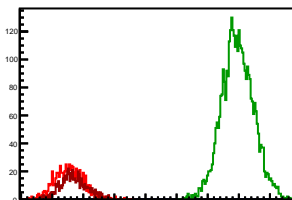
Cycle 14, NegHel

Entries: 695	Entries: 3742	Entries: 708
Mean: 7.4962 +/- 0.0106	Mean: 9.8841 +/- 0.0052	Mean: 7.5604 +/- 0.0105
Std Dev: 0.2802 +/- 0.0075	Std Dev: 0.3206 +/- 0.0037	Std Dev: 0.2782 +/- 0.0074



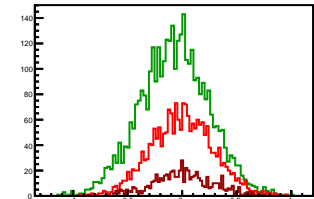
Cycle 15, NegHel

Entries: 688	Entries: 3749	Entries: 652
Mean: 7.7719 +/- 0.0088	Mean: 10.4799 +/- 0.0041	Mean: 7.8416 +/- 0.0082
Std Dev: 0.2303 +/- 0.0062	Std Dev: 0.2535 +/- 0.0028	Std Dev: 0.2103 +/- 0.0058



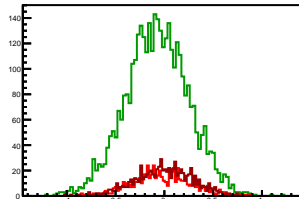
Cycle 1, Diffs

Entries: 2063	Entries: 3708	Entries: 606
Mean: -0.0013 +/- 0.0063	Mean: -0.0703 +/- 0.0052	Mean: 0.0039 +/- 0.0109
Std Dev: 0.2839 +/- 0.0044	Std Dev: 0.3146 +/- 0.0037	Std Dev: 0.2687 +/- 0.0077



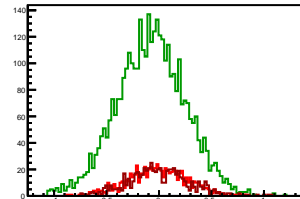
Cycle 2, Diffs

Entries: 621	Entries: 3746	Entries: 769
Mean: -0.0218 +/- 0.0119	Mean: -0.0755 +/- 0.0053	Mean: -0.0088 +/- 0.0105
Std Dev: 0.2974 +/- 0.0084	Std Dev: 0.3218 +/- 0.0037	Std Dev: 0.2925 +/- 0.0075



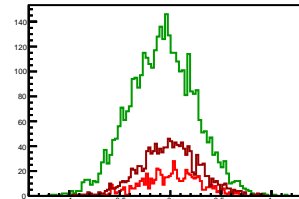
Cycle 3, Diffs

Entries: 732	Entries: 3693	Entries: 628
Mean: -0.0180 +/- 0.0104	Mean: -0.0761 +/- 0.0054	Mean: -0.0013 +/- 0.0117
Std Dev: 0.2811 +/- 0.0073	Std Dev: 0.3269 +/- 0.0038	Std Dev: 0.2922 +/- 0.0082



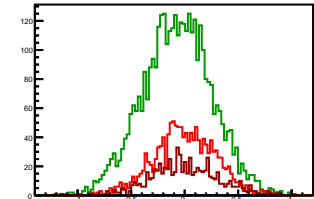
Cycle 4, Diffs

Entries: 632	Entries: 3723	Entries: 1383
Mean: 0.0082 +/- 0.0118	Mean: -0.0784 +/- 0.0053	Mean: -0.0092 +/- 0.0078
Std Dev: 0.2972 +/- 0.0084	Std Dev: 0.3259 +/- 0.0038	Std Dev: 0.2906 +/- 0.0055



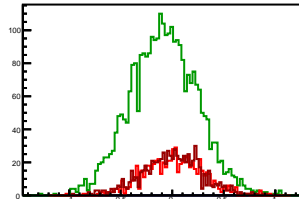
Cycle 5, Diffs

Entries: 1369	Entries: 3773	Entries: 690
Mean: -0.0017 +/- 0.0078	Mean: -0.0702 +/- 0.0052	Mean: 0.0045 +/- 0.0116
Std Dev: 0.2895 +/- 0.0055	Std Dev: 0.3221 +/- 0.0037	Std Dev: 0.3046 +/- 0.0082



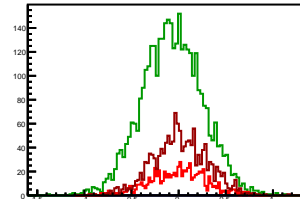
Cycle 6, Diffs

Entries: 675	Entries: 2998	Entries: 783
Mean: 0.0059 +/- 0.0110	Mean: -0.0816 +/- 0.0059	Mean: -0.0032 +/- 0.0104
Std Dev: 0.2848 +/- 0.0078	Std Dev: 0.3238 +/- 0.0042	Std Dev: 0.2896 +/- 0.0073



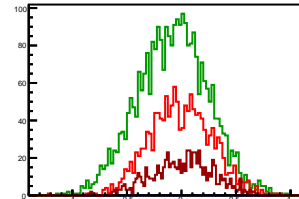
Cycle 7, Diffs

Entries: 745	Entries: 3784	Entries: 1433
Mean: -0.0043 +/- 0.0111	Mean: -0.0675 +/- 0.0052	Mean: 0.0133 +/- 0.0076
Std Dev: 0.3042 +/- 0.0079	Std Dev: 0.3221 +/- 0.0037	Std Dev: 0.2881 +/- 0.0054



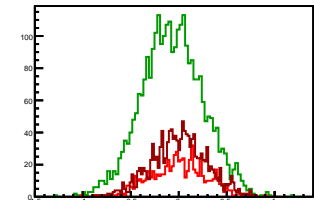
Cycle 8, Diffs

Entries: 1429	Entries: 2927	Entries: 735
Mean: -0.0101 +/- 0.0075	Mean: -0.0781 +/- 0.0060	Mean: 0.0101 +/- 0.0102
Std Dev: 0.2848 +/- 0.0053	Std Dev: 0.3224 +/- 0.0042	Std Dev: 0.2777 +/- 0.0072



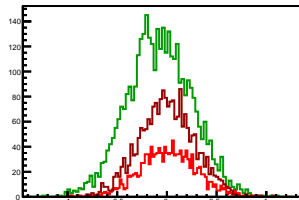
Cycle 9, Diffs

Entries: 701	Entries: 2932	Entries: 1351
Mean: -0.0061 +/- 0.0109	Mean: -0.0684 +/- 0.0059	Mean: 0.0052 +/- 0.0077
Std Dev: 0.2883 +/- 0.0077	Std Dev: 0.3214 +/- 0.0042	Std Dev: 0.2834 +/- 0.0055



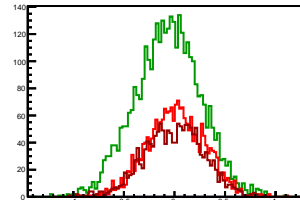
Cycle 10, Diffs

Entries: 1343	Entries: 3776	Entries: 2151
Mean: 0.0089 +/- 0.0074	Mean: -0.0751 +/- 0.0053	Mean: -0.0027 +/- 0.0060
Std Dev: 0.2728 +/- 0.0053	Std Dev: 0.3262 +/- 0.0038	Std Dev: 0.2787 +/- 0.0042



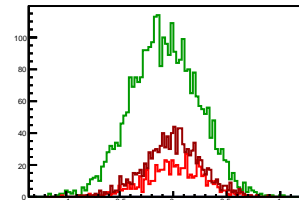
Cycle 11, Diffs

Entries: 2113	Entries: 3718	Entries: 1542
Mean: 0.0110 +/- 0.0061	Mean: -0.0665 +/- 0.0053	Mean: -0.0071 +/- 0.0075
Std Dev: 0.2806 +/- 0.0043	Std Dev: 0.3249 +/- 0.0038	Std Dev: 0.2963 +/- 0.0053



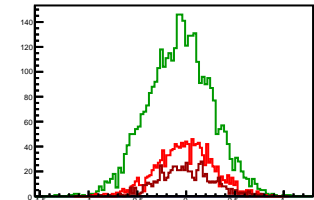
Cycle 12, Diffs

Entries: 616	Entries: 3117	Entries: 1119
Mean: 0.0080 +/- 0.0112	Mean: -0.0781 +/- 0.0057	Mean: -0.0038 +/- 0.0080
Std Dev: 0.2777 +/- 0.0079	Std Dev: 0.3162 +/- 0.0040	Std Dev: 0.2680 +/- 0.0057



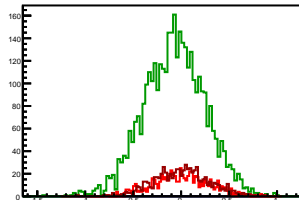
Cycle 13, Diffs

Entries: 1377	Entries: 3725	Entries: 710
Mean: -0.0125 +/- 0.0078	Mean: -0.0637 +/- 0.0053	Mean: -0.0041 +/- 0.0105
Std Dev: 0.2877 +/- 0.0055	Std Dev: 0.3263 +/- 0.0038	Std Dev: 0.2794 +/- 0.0074



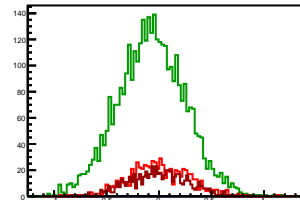
Cycle 14, Diffs

Entries: 695	Entries: 3742	Entries: 708
Mean: 0.0059 +/- 0.0112	Mean: -0.0695 +/- 0.0052	Mean: 0.0055 +/- 0.0107
Std Dev: 0.2954 +/- 0.0079	Std Dev: 0.3195 +/- 0.0037	Std Dev: 0.2836 +/- 0.0075



Cycle 15, Diffs

Entries: 688	Entries: 3749	Entries: 652
Mean: -0.0017 +/- 0.0108	Mean: -0.0731 +/- 0.0052	Mean: -0.0071 +/- 0.0108
Std Dev: 0.2841 +/- 0.0077	Std Dev: 0.3189 +/- 0.0037	Std Dev: 0.2761 +/- 0.0076

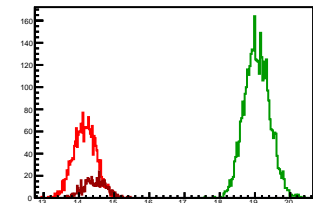


Cycle 1, Sums

Entries: 2063 Entries: 3708 Entries: 606

Mean: 14.1640 +/- 0.0070 Mean: 19.0577 +/- 0.0058 Mean: 14.4530 +/- 0.0128

Std Dev: 0.3202 +/- 0.0050 Std Dev: 0.3561 +/- 0.0041 Std Dev: 0.3163 +/- 0.0091

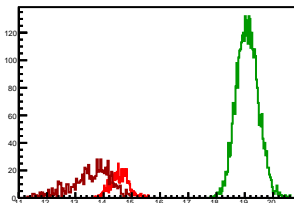


Cycle 2, Sums

Entries: 621 Entries: 3746 Entries: 769

Mean: 14.5616 +/- 0.0128 Mean: 19.0942 +/- 0.0064 Mean: 13.5350 +/- 0.0255

Std Dev: 0.3188 +/- 0.0090 Std Dev: 0.3906 +/- 0.0045 Std Dev: 0.7084 +/- 0.0181

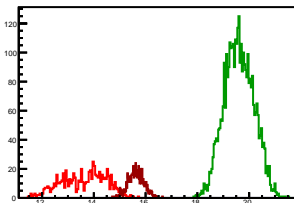


Cycle 3, Sums

Entries: 732 Entries: 3693 Entries: 628

Mean: 13.6056 +/- 0.0317 Mean: 19.6099 +/- 0.0094 Mean: 15.6324 +/- 0.0123

Std Dev: 0.8587 +/- 0.0224 Std Dev: 0.5713 +/- 0.0066 Std Dev: 0.3080 +/- 0.0087

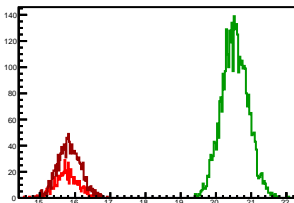


Cycle 4, Sums

Entries: 632 Entries: 3723 Entries: 1383

Mean: 15.7565 +/- 0.0130 Mean: 20.5352 +/- 0.0061 Mean: 15.8276 +/- 0.0088

Std Dev: 0.3256 +/- 0.0092 Std Dev: 0.3739 +/- 0.0043 Std Dev: 0.3276 +/- 0.0062

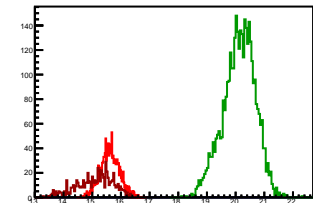


Cycle 5, Sums

Entries: 1369 Entries: 3773 Entries: 690

Mean: 15.6231 +/- 0.0092 Mean: 20.1232 +/- 0.0091 Mean: 15.0902 +/- 0.0240

Std Dev: 0.3390 +/- 0.0065 Std Dev: 0.5597 +/- 0.0064 Std Dev: 0.6295 +/- 0.0169

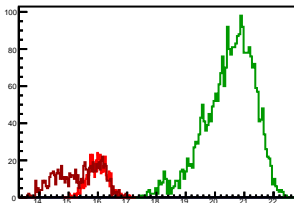


Cycle 6, Sums

Entries: 675 Entries: 2998 Entries: 783

Mean: 15.9921 +/- 0.0128 Mean: 20.4989 +/- 0.0154 Mean: 15.3680 +/- 0.0265

Std Dev: 0.3323 +/- 0.0090 Std Dev: 0.8411 +/- 0.0109 Std Dev: 0.7425 +/- 0.0188

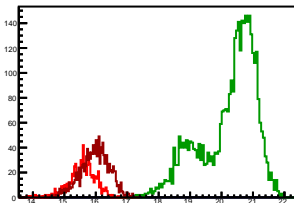


Cycle 7, Sums

Entries: 745 Entries: 3784 Entries: 1433

Mean: 15.5680 +/- 0.0160 Mean: 20.2324 +/- 0.0144 Mean: 15.9723 +/- 0.0120

Std Dev: 0.4380 +/- 0.0113 Std Dev: 0.8862 +/- 0.0102 Std Dev: 0.4548 +/- 0.0085

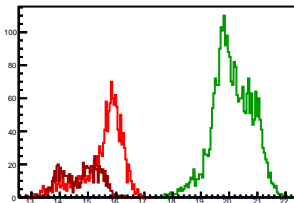


Cycle 8, Sums

Entries: 1429 Entries: 2927 Entries: 735

Mean: 15.5243 +/- 0.0199 Mean: 20.1175 +/- 0.0128 Mean: 14.7469 +/- 0.0240

Std Dev: 0.7528 +/- 0.0141 Std Dev: 0.6936 +/- 0.0091 Std Dev: 0.6519 +/- 0.0170

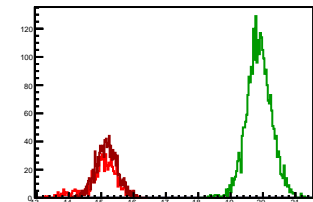


Cycle 9, Sums

Entries: 701 Entries: 2932 Entries: 1351

Mean: 15.0329 +/- 0.0183 Mean: 19.8800 +/- 0.0072 Mean: 15.1648 +/- 0.0089

Std Dev: 0.4842 +/- 0.0129 Std Dev: 0.3890 +/- 0.0051 Std Dev: 0.3289 +/- 0.0063

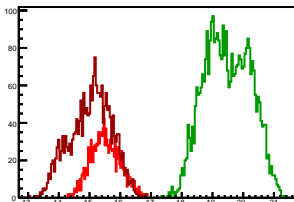


Cycle 10, Sums

Entries: 1343 Entries: 3776 Entries: 2151

Mean: 15.5148 +/- 0.0129 Mean: 19.4861 +/- 0.0120 Mean: 15.0471 +/- 0.0145

Std Dev: 0.4737 +/- 0.0091 Std Dev: 0.7398 +/- 0.0085 Std Dev: 0.6707 +/- 0.0102

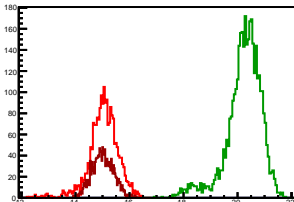


Cycle 11, Sums

Entries: 2113 Entries: 3718 Entries: 1542

Mean: 15.0352 +/- 0.0119 Mean: 20.2271 +/- 0.0108 Mean: 15.0120 +/- 0.0101

Std Dev: 0.5469 +/- 0.0084 Std Dev: 0.6610 +/- 0.0077 Std Dev: 0.3953 +/- 0.0071

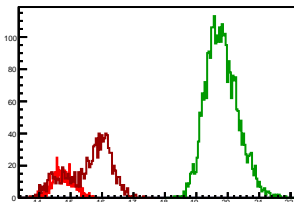


Cycle 12, Sums

Entries: 616 Entries: 3117 Entries: 1119

Mean: 14.7638 +/- 0.0135 Mean: 19.8140 +/- 0.0090 Mean: 15.5902 +/- 0.0209

Std Dev: 0.3354 +/- 0.0096 Std Dev: 0.5052 +/- 0.0064 Std Dev: 0.7006 +/- 0.0148

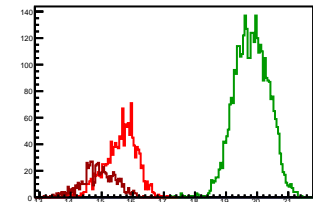


Cycle 13, Sums

Entries: 1377 Entries: 3725 Entries: 710

Mean: 15.6129 +/- 0.0140 Mean: 19.8168 +/- 0.0090 Mean: 14.9056 +/- 0.0208

Std Dev: 0.5196 +/- 0.0099 Std Dev: 0.5488 +/- 0.0064 Std Dev: 0.5543 +/- 0.0147

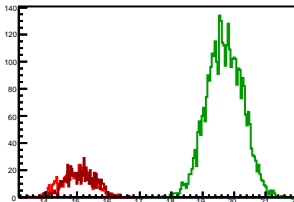


Cycle 14, Sums

Entries: 695 Entries: 3742 Entries: 708

Mean: 14.9983 +/- 0.0188 Mean: 19.6987 +/- 0.0092 Mean: 15.1262 +/- 0.0177

Std Dev: 0.4956 +/- 0.0133 Std Dev: 0.5633 +/- 0.0065 Std Dev: 0.4719 +/- 0.0125

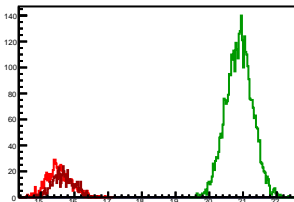


Cycle 15, Sums

Entries: 688 Entries: 3749 Entries: 652

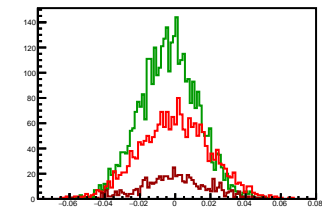
Mean: 15.5421 +/- 0.0139 Mean: 20.8867 +/- 0.0064 Mean: 15.6762 +/- 0.0125

Std Dev: 0.3656 +/- 0.0099 Std Dev: 0.3939 +/- 0.0045 Std Dev: 0.3204 +/- 0.0089



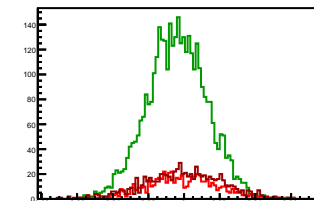
Cycle 1, Asyms

Entries: 2063	Entries: 3708	Entries: 606
Mean: -0.0001 ± 0.0004	Mean: -0.0037 ± 0.0003	Mean: 0.0003 ± 0.0008
Std Dev: 0.0200 ± 0.0003	Std Dev: 0.0165 ± 0.0002	Std Dev: 0.0186 ± 0.0005



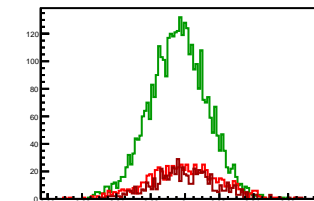
Cycle 2, Asyms

Entries: 621	Entries: 3746	Entries: 769
Mean: -0.0015 ± 0.0006	Mean: -0.0040 ± 0.0003	Mean: -0.0006 ± 0.0008
Std Dev: 0.0204 ± 0.0006	Std Dev: 0.0168 ± 0.0002	Std Dev: 0.0217 ± 0.0006



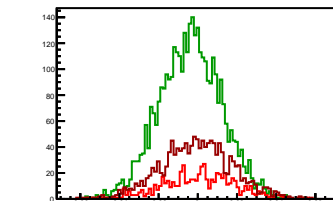
Cycle 3, Asyms

Entries: 732	Entries: 3693	Entries: 628
Mean: -0.0013 ± 0.0008	Mean: -0.0039 ± 0.0003	Mean: -0.0001 ± 0.0007
Std Dev: 0.0208 ± 0.0005	Std Dev: 0.0167 ± 0.0002	Std Dev: 0.0187 ± 0.0005



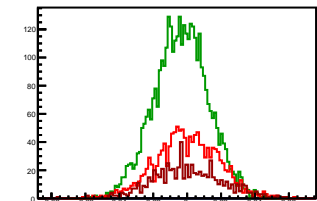
Cycle 4, Asyms

Entries: 632	Entries: 3723	Entries: 1383
Mean: 0.0005 ± 0.0007	Mean: -0.0038 ± 0.0003	Mean: -0.0006 ± 0.0005
Std Dev: 0.0188 ± 0.0005	Std Dev: 0.0159 ± 0.0002	Std Dev: 0.0183 ± 0.0003



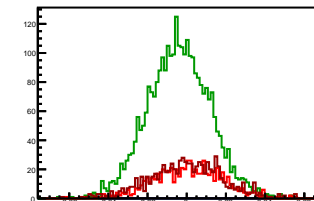
Cycle 5, Asyms

Entries: 1369	Entries: 3773	Entries: 690
Mean: -0.0001 ± 0.0005	Mean: -0.0035 ± 0.0003	Mean: 0.0003 ± 0.0008
Std Dev: 0.0185 ± 0.0004	Std Dev: 0.0160 ± 0.0002	Std Dev: 0.0202 ± 0.0005



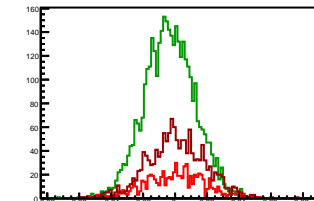
Cycle 6, Asyms

Entries: 675	Entries: 2998	Entries: 783
Mean: 0.0006 ± 0.0007	Mean: -0.0040 ± 0.0003	Mean: -0.0002 ± 0.0007
Std Dev: 0.0178 ± 0.0005	Std Dev: 0.0158 ± 0.0002	Std Dev: 0.0188 ± 0.0005



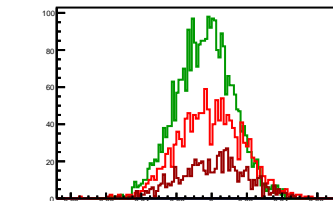
Cycle 7, Asyms

Entries: 745	Entries: 3784	Entries: 1433
Mean: -0.0002 ± 0.0007	Mean: -0.0033 ± 0.0003	Mean: 0.0008 ± 0.0005
Std Dev: 0.0195 ± 0.0005	Std Dev: 0.0159 ± 0.0002	Std Dev: 0.0181 ± 0.0005



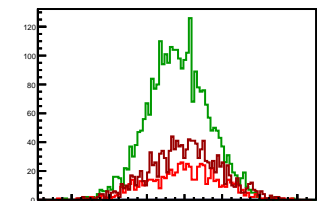
Cycle 8, Asyms

Entries: 1429	Entries: 2927	Entries: 735
Mean: -0.0007 ± 0.0005	Mean: -0.0039 ± 0.0003	Mean: 0.0007 ± 0.0007
Std Dev: 0.0184 ± 0.0003	Std Dev: 0.0160 ± 0.0002	Std Dev: 0.0189 ± 0.0005



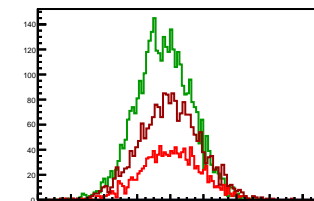
Cycle 9, Asyms

Entries: 701	Entries: 2932	Entries: 1351
Mean: -0.0004 ± 0.0007	Mean: -0.0034 ± 0.0003	Mean: 0.0003 ± 0.0005
Std Dev: 0.0191 ± 0.0005	Std Dev: 0.0162 ± 0.0002	Std Dev: 0.0187 ± 0.0004



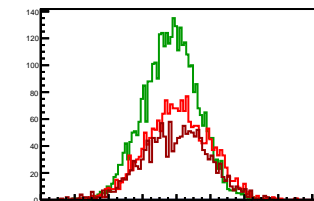
Cycle 10, Asyms

Entries: 1343	Entries: 3776	Entries: 2151
Mean: 0.0006 ± 0.0005	Mean: -0.0039 ± 0.0003	Mean: -0.0002 ± 0.0004
Std Dev: 0.0176 ± 0.0003	Std Dev: 0.0167 ± 0.0002	Std Dev: 0.0185 ± 0.0003



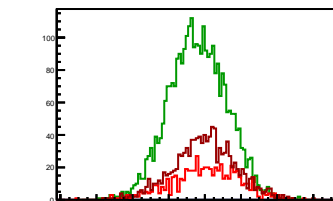
Cycle 11, Asyms

Entries: 2113	Entries: 3718	Entries: 1542
Mean: 0.0007 ± 0.0004	Mean: -0.0033 ± 0.0003	Mean: -0.0005 ± 0.0005
Std Dev: 0.0187 ± 0.0003	Std Dev: 0.0160 ± 0.0002	Std Dev: 0.0197 ± 0.0004



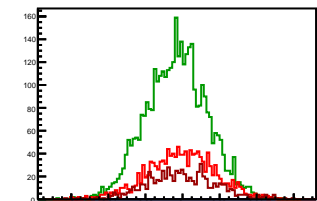
Cycle 12, Asyms

Entries: 616	Entries: 3117	Entries: 1119
Mean: 0.0006 ± 0.0008	Mean: -0.0039 ± 0.0003	Mean: -0.0002 ± 0.0005
Std Dev: 0.0188 ± 0.0005	Std Dev: 0.0160 ± 0.0002	Std Dev: 0.0172 ± 0.0004



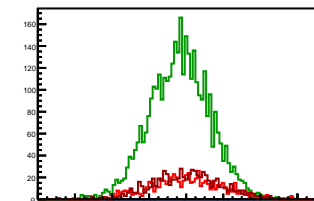
Cycle 13, Asyms

Entries: 1377	Entries: 3725	Entries: 710
Mean: -0.0008 ± 0.0005	Mean: -0.0032 ± 0.0003	Mean: -0.0003 ± 0.0007
Std Dev: 0.0184 ± 0.0004	Std Dev: 0.0165 ± 0.0002	Std Dev: 0.0187 ± 0.0005



Cycle 14, Asyms

Entries: 695	Entries: 3742	Entries: 708
Mean: 0.0004 ± 0.0007	Mean: -0.0035 ± 0.0003	Mean: 0.0004 ± 0.0007
Std Dev: 0.0197 ± 0.0005	Std Dev: 0.0162 ± 0.0002	Std Dev: 0.0187 ± 0.0005



Cycle 15, Asyms

Entries: 688	Entries: 3749	Entries: 652
Mean: -0.0001 ± 0.0007	Mean: -0.0035 ± 0.0002	Mean: -0.0005 ± 0.0007
Std Dev: 0.0182 ± 0.0005	Std Dev: 0.0152 ± 0.0002	Std Dev: 0.0176 ± 0.0005

