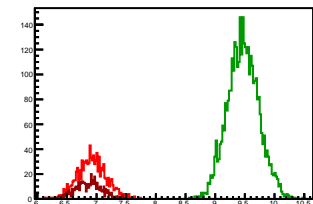


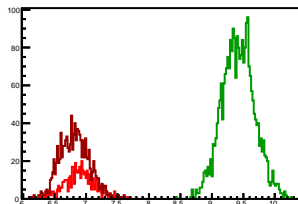
### Cycle 1, PosHel

Entries: 1007	Entries: 3724	Entries: 520
Mean: 6.9214 +/- 0.0077	Mean: 9.4702 +/- 0.0043	Mean: 6.8713 +/- 0.0099
Std Dev: 0.2455 +/- 0.0055	Std Dev: 0.2646 +/- 0.0031	Std Dev: 0.2249 +/- 0.0070



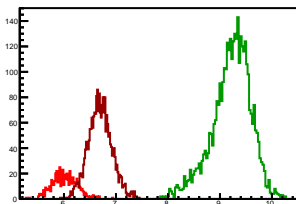
### Cycle 2, PosHel

Entries: 497	Entries: 2641	Entries: 1103
Mean: 6.9028 +/- 0.0107	Mean: 9.4194 +/- 0.0051	Mean: 6.8195 +/- 0.0071
Std Dev: 0.2378 +/- 0.0075	Std Dev: 0.2607 +/- 0.0036	Std Dev: 0.2355 +/- 0.0050



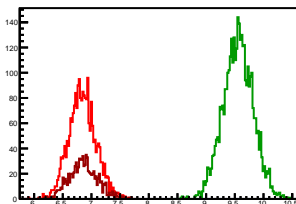
### Cycle 3, PosHel

Entries: 573	Entries: 3763	Entries: 2351
Mean: 6.0151 +/- 0.0100	Mean: 9.2145 +/- 0.0061	Mean: 6.6954 +/- 0.0047
Std Dev: 0.2384 +/- 0.0070	Std Dev: 0.3754 +/- 0.0043	Std Dev: 0.2295 +/- 0.0033



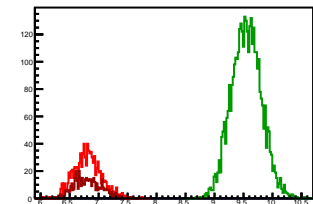
### Cycle 4, PosHel

Entries: 2345	Entries: 3756	Entries: 907
Mean: 6.8426 +/- 0.0049	Mean: 9.5561 +/- 0.0043	Mean: 6.8587 +/- 0.0062
Std Dev: 0.2376 +/- 0.0035	Std Dev: 0.2626 +/- 0.0030	Std Dev: 0.2467 +/- 0.0058



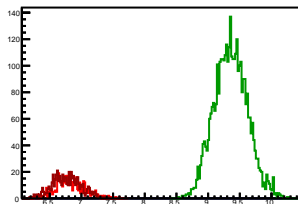
### Cycle 5, PosHel

Entries: 933	Entries: 3776	Entries: 466
Mean: 6.8133 +/- 0.0077	Mean: 9.5494 +/- 0.0042	Mean: 6.8044 +/- 0.0108
Std Dev: 0.2361 +/- 0.0055	Std Dev: 0.2576 +/- 0.0030	Std Dev: 0.2321 +/- 0.0076



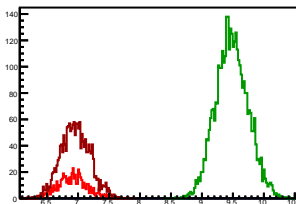
### Cycle 6, PosHel

Entries: 475	Entries: 3747	Entries: 557
Mean: 6.8228 +/- 0.0103	Mean: 9.5571 +/- 0.0043	Mean: 6.7713 +/- 0.0098
Std Dev: 0.2250 +/- 0.0073	Std Dev: 0.2637 +/- 0.0030	Std Dev: 0.2316 +/- 0.0069



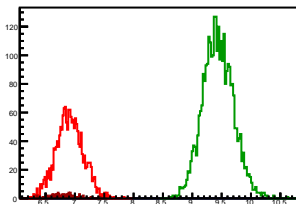
### Cycle 7, PosHel

Entries: 557	Entries: 3744	Entries: 1778
Mean: 6.9098 +/- 0.0100	Mean: 9.4832 +/- 0.0043	Mean: 6.9583 +/- 0.0056
Std Dev: 0.2371 +/- 0.0071	Std Dev: 0.2619 +/- 0.0030	Std Dev: 0.2348 +/- 0.0039



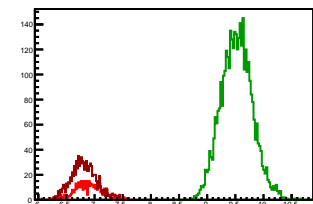
### Cycle 8, PosHel

Entries: 1727	Entries: 3181	Entries: 88
Mean: 6.9098 +/- 0.0056	Mean: 9.4387 +/- 0.0046	Mean: 6.8105 +/- 0.0211
Std Dev: 0.2308 +/- 0.0039	Std Dev: 0.2618 +/- 0.0033	Std Dev: 0.1976 +/- 0.0149



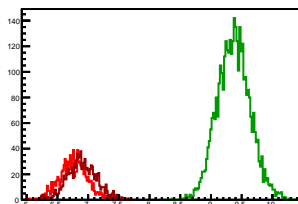
### Cycle 9, PosHel

Entries: 475	Entries: 3769	Entries: 930
Mean: 6.8892 +/- 0.0108	Mean: 9.5252 +/- 0.0045	Mean: 6.8103 +/- 0.0076
Std Dev: 0.2361 +/- 0.0077	Std Dev: 0.2764 +/- 0.0032	Std Dev: 0.2304 +/- 0.0053



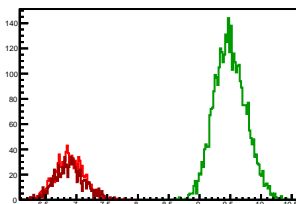
### Cycle 10, PosHel

Entries: 980	Entries: 3765	Entries: 1010
Mean: 6.7628 +/- 0.0072	Mean: 9.3703 +/- 0.0044	Mean: 6.8961 +/- 0.0074
Std Dev: 0.2259 +/- 0.0051	Std Dev: 0.2673 +/- 0.0031	Std Dev: 0.2345 +/- 0.0052



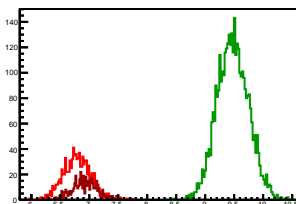
### Cycle 11, PosHel

Entries: 1047	Entries: 3802	Entries: 953
Mean: 6.8853 +/- 0.0070	Mean: 9.4974 +/- 0.0042	Mean: 6.8911 +/- 0.0078
Std Dev: 0.2269 +/- 0.0050	Std Dev: 0.2592 +/- 0.0030	Std Dev: 0.2395 +/- 0.0055



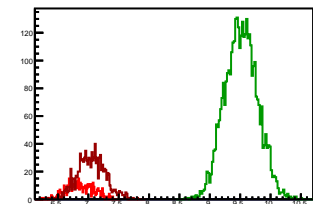
### Cycle 12, PosHel

Entries: 981	Entries: 3753	Entries: 458
Mean: 6.7855 +/- 0.0074	Mean: 9.4764 +/- 0.0044	Mean: 6.9241 +/- 0.0106
Std Dev: 0.2330 +/- 0.0053	Std Dev: 0.2701 +/- 0.0031	Std Dev: 0.2265 +/- 0.0075



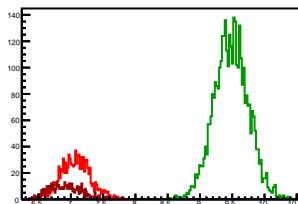
### Cycle 13, PosHel

Entries: 444	Entries: 3801	Entries: 1031
Mean: 6.8610 +/- 0.0109	Mean: 9.5167 +/- 0.0044	Mean: 7.0516 +/- 0.0071
Std Dev: 0.2287 +/- 0.0077	Std Dev: 0.2697 +/- 0.0031	Std Dev: 0.2290 +/- 0.0050



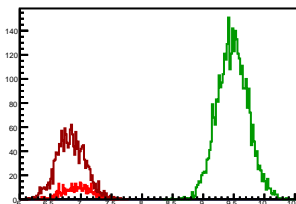
### Cycle 14, PosHel

Entries: 1029	Entries: 3723	Entries: 472
Mean: 7.0722 +/- 0.0072	Mean: 9.4829 +/- 0.0043	Mean: 6.9137 +/- 0.0110
Std Dev: 0.2315 +/- 0.0051	Std Dev: 0.2646 +/- 0.0031	Std Dev: 0.2394 +/- 0.0078



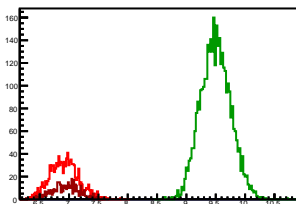
### Cycle 15, PosHel

Entries: 444	Entries: 3774	Entries: 1757
Mean: 6.9447 +/- 0.0109	Mean: 9.4826 +/- 0.0041	Mean: 6.8392 +/- 0.0056
Std Dev: 0.2294 +/- 0.0077	Std Dev: 0.2515 +/- 0.0029	Std Dev: 0.2361 +/- 0.0040



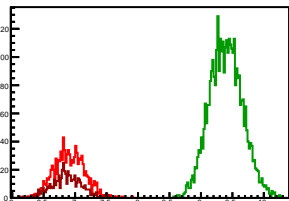
### Cycle 16, PosHel

Entries: 1094	Entries: 3699	Entries: 465
Mean: 6.9177 +/- 0.0073	Mean: 9.4983 +/- 0.0042	Mean: 6.9436 +/- 0.0105
Std Dev: 0.2413 +/- 0.0052	Std Dev: 0.2550 +/- 0.0030	Std Dev: 0.2264 +/- 0.0074



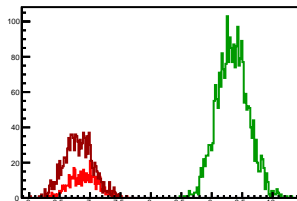
### Cycle 1, NegHel

Entries: 1007	Entries: 3724	Entries: 520
Mean: 6.9127 +/- 0.0076	Mean: 9.3974 +/- 0.0043	Mean: 6.8702 +/- 0.0107
Std Dev: 0.2399 +/- 0.0053	Std Dev: 0.2622 +/- 0.0030	Std Dev: 0.2435 +/- 0.0076



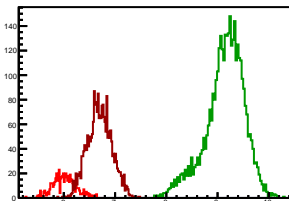
### Cycle 2, NegHel

Entries: 497	Entries: 2641	Entries: 1103
Mean: 6.8939 +/- 0.0104	Mean: 9.3446 +/- 0.0050	Mean: 6.8128 +/- 0.0072
Std Dev: 0.2327 +/- 0.0074	Std Dev: 0.2588 +/- 0.0036	Std Dev: 0.2390 +/- 0.0051



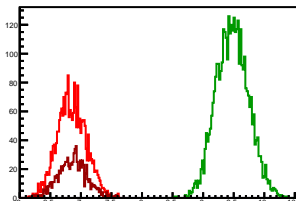
### Cycle 3, NegHel

Entries: 573	Entries: 3763	Entries: 2351
Mean: 6.0147 +/- 0.0094	Mean: 9.1424 +/- 0.0062	Mean: 6.6985 +/- 0.0049
Std Dev: 0.2257 +/- 0.0067	Std Dev: 0.3803 +/- 0.0044	Std Dev: 0.2374 +/- 0.0035



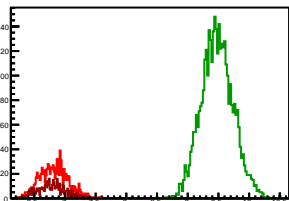
### Cycle 4, NegHel

Entries: 2345	Entries: 3756	Entries: 907
Mean: 6.8494 +/- 0.0049	Mean: 9.4776 +/- 0.0043	Mean: 6.8619 +/- 0.0079
Std Dev: 0.2355 +/- 0.0034	Std Dev: 0.2656 +/- 0.0031	Std Dev: 0.2369 +/- 0.0056



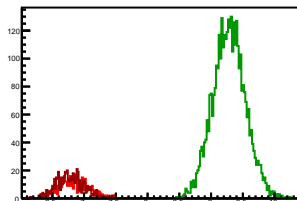
### Cycle 5, NegHel

Entries: 933	Entries: 3776	Entries: 466
Mean: 6.8176 +/- 0.0075	Mean: 9.4795 +/- 0.0042	Mean: 6.7875 +/- 0.0102
Std Dev: 0.2299 +/- 0.0053	Std Dev: 0.2604 +/- 0.0030	Std Dev: 0.2210 +/- 0.0072



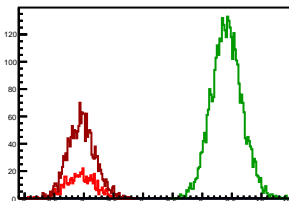
### Cycle 6, NegHel

Entries: 475	Entries: 3747	Entries: 557
Mean: 6.8354 +/- 0.0108	Mean: 9.2839 +/- 0.0042	Mean: 6.7774 +/- 0.0092
Std Dev: 0.2359 +/- 0.0077	Std Dev: 0.2578 +/- 0.0030	Std Dev: 0.2168 +/- 0.0065



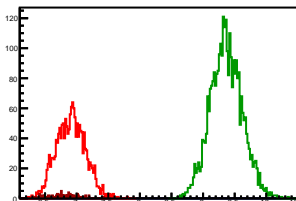
### Cycle 7, NegHel

Entries: 557	Entries: 3744	Entries: 1778
Mean: 6.9310 +/- 0.0105	Mean: 9.4132 +/- 0.0042	Mean: 6.9603 +/- 0.0055
Std Dev: 0.2467 +/- 0.0074	Std Dev: 0.2584 +/- 0.0030	Std Dev: 0.2314 +/- 0.0039



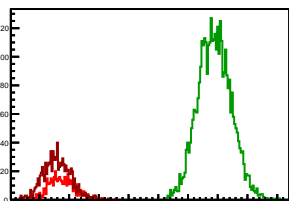
### Cycle 8, NegHel

Entries: 1727	Entries: 3181	Entries: 88
Mean: 6.9097 +/- 0.0055	Mean: 9.3671 +/- 0.0045	Mean: 6.7984 +/- 0.0236
Std Dev: 0.2289 +/- 0.0039	Std Dev: 0.2523 +/- 0.0032	Std Dev: 0.2212 +/- 0.0167



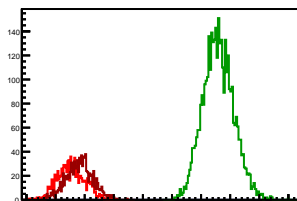
### Cycle 9, NegHel

Entries: 475	Entries: 3769	Entries: 930
Mean: 6.8735 +/- 0.0101	Mean: 9.4465 +/- 0.0045	Mean: 6.7992 +/- 0.0076
Std Dev: 0.2203 +/- 0.0071	Std Dev: 0.2790 +/- 0.0032	Std Dev: 0.2323 +/- 0.0054



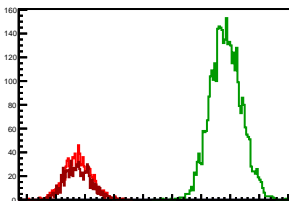
### Cycle 10, NegHel

Entries: 980	Entries: 3765	Entries: 1010
Mean: 6.7655 +/- 0.0074	Mean: 9.2965 +/- 0.0043	Mean: 6.9127 +/- 0.0072
Std Dev: 0.2329 +/- 0.0053	Std Dev: 0.2650 +/- 0.0031	Std Dev: 0.2297 +/- 0.0051



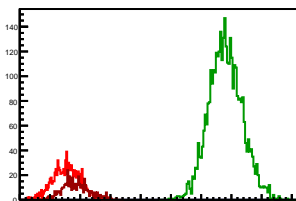
### Cycle 11, NegHel

Entries: 1047	Entries: 3802	Entries: 953
Mean: 6.8787 +/- 0.0073	Mean: 9.4255 +/- 0.0043	Mean: 6.8795 +/- 0.0073
Std Dev: 0.2355 +/- 0.0051	Std Dev: 0.2658 +/- 0.0030	Std Dev: 0.2240 +/- 0.0051



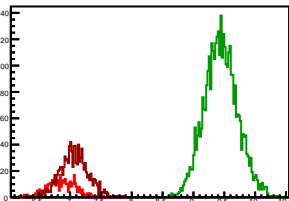
### Cycle 12, NegHel

Entries: 981	Entries: 3753	Entries: 458
Mean: 6.7728 +/- 0.0072	Mean: 9.4025 +/- 0.0045	Mean: 6.9196 +/- 0.0104
Std Dev: 0.2267 +/- 0.0051	Std Dev: 0.2740 +/- 0.0032	Std Dev: 0.2231 +/- 0.0074



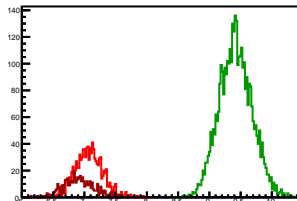
### Cycle 13, NegHel

Entries: 444	Entries: 3801	Entries: 1031
Mean: 6.8707 +/- 0.0111	Mean: 9.4464 +/- 0.0044	Mean: 7.0663 +/- 0.0070
Std Dev: 0.2334 +/- 0.0078	Std Dev: 0.2699 +/- 0.0031	Std Dev: 0.2264 +/- 0.0050



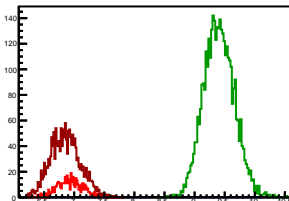
### Cycle 14, NegHel

Entries: 1029	Entries: 3723	Entries: 472
Mean: 7.0717 +/- 0.0068	Mean: 9.4198 +/- 0.0043	Mean: 6.9086 +/- 0.0112
Std Dev: 0.2187 +/- 0.0048	Std Dev: 0.2612 +/- 0.0030	Std Dev: 0.2436 +/- 0.0079



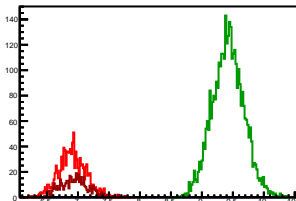
### Cycle 15, NegHel

Entries: 444	Entries: 3774	Entries: 1757
Mean: 6.9454 +/- 0.0107	Mean: 9.4063 +/- 0.0041	Mean: 6.8523 +/- 0.0058
Std Dev: 0.2250 +/- 0.0075	Std Dev: 0.2533 +/- 0.0029	Std Dev: 0.2445 +/- 0.0041



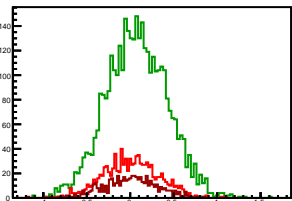
### Cycle 16, NegHel

Entries: 1094	Entries: 3699	Entries: 465
Mean: 6.9056 +/- 0.0068	Mean: 9.4226 +/- 0.0042	Mean: 6.9420 +/- 0.0104
Std Dev: 0.2241 +/- 0.0048	Std Dev: 0.2555 +/- 0.0030	Std Dev: 0.2234 +/- 0.0073



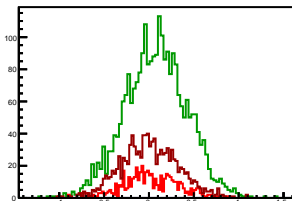
### Cycle 1, Diffs

Entries: 1007	Entries: 3724	Entries: 520
Mean: 0.0088 +/- 0.0099	Mean: 0.0728 +/- 0.0057	Mean: 0.0011 +/- 0.0135
Std Dev: 0.3151 +/- 0.0070	Std Dev: 0.3490 +/- 0.0040	Std Dev: 0.3072 +/- 0.0095



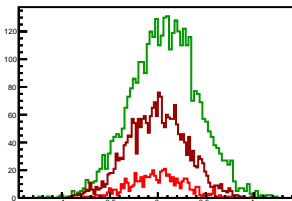
### Cycle 2, Diffs

Entries: 497	Entries: 2641	Entries: 1103
Mean: 0.0088 +/- 0.0140	Mean: 0.0749 +/- 0.0067	Mean: 0.0067 +/- 0.0095
Std Dev: 0.3126 +/- 0.0099	Std Dev: 0.3460 +/- 0.0048	Std Dev: 0.3166 +/- 0.0067



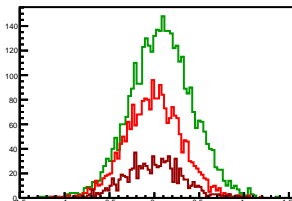
### Cycle 3, Diffs

Entries: 573	Entries: 3763	Entries: 2351
Mean: 0.0004 +/- 0.0119	Mean: 0.0722 +/- 0.0057	Mean: -0.0032 +/- 0.0063
Std Dev: 0.2843 +/- 0.0084	Std Dev: 0.3473 +/- 0.0040	Std Dev: 0.3075 +/- 0.0045



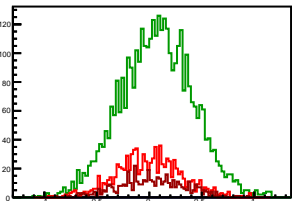
### Cycle 4, Diffs

Entries: 2345	Entries: 3756	Entries: 907
Mean: -0.0068 +/- 0.0064	Mean: 0.0785 +/- 0.0056	Mean: -0.0032 +/- 0.0105
Std Dev: 0.3101 +/- 0.0045	Std Dev: 0.3441 +/- 0.0040	Std Dev: 0.3148 +/- 0.0074



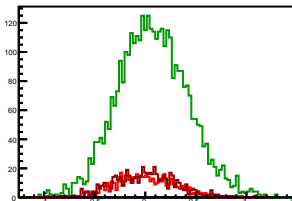
### Cycle 5, Diffs

Entries: 933	Entries: 3776	Entries: 466
Mean: -0.0043 +/- 0.0102	Mean: 0.0698 +/- 0.0056	Mean: 0.0169 +/- 0.0144
Std Dev: 0.3105 +/- 0.0072	Std Dev: 0.3440 +/- 0.0040	Std Dev: 0.3099 +/- 0.0102



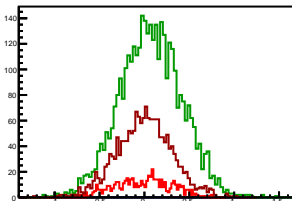
### Cycle 6, Diffs

Entries: 475	Entries: 3747	Entries: 557
Mean: -0.0126 +/- 0.0139	Mean: 0.0732 +/- 0.0057	Mean: -0.0061 +/- 0.0129
Std Dev: 0.3030 +/- 0.0098	Std Dev: 0.3471 +/- 0.0040	Std Dev: 0.3038 +/- 0.0091



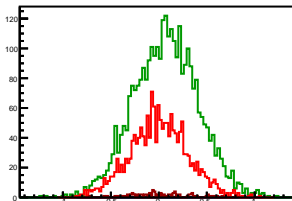
### Cycle 7, Diffs

Entries: 557	Entries: 3744	Entries: 1778
Mean: -0.0212 +/- 0.0134	Mean: 0.0701 +/- 0.0056	Mean: -0.0020 +/- 0.0073
Std Dev: 0.3174 +/- 0.0095	Std Dev: 0.3445 +/- 0.0040	Std Dev: 0.3082 +/- 0.0052



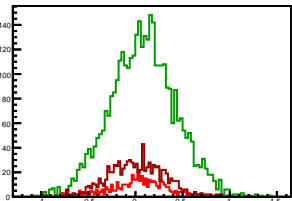
### Cycle 8, Diffs

Entries: 1727	Entries: 3181	Entries: 88
Mean: 0.0002 +/- 0.0073	Mean: 0.0716 +/- 0.0060	Mean: 0.0120 +/- 0.0313
Std Dev: 0.3021 +/- 0.0051	Std Dev: 0.3371 +/- 0.0042	Std Dev: 0.2935 +/- 0.0221



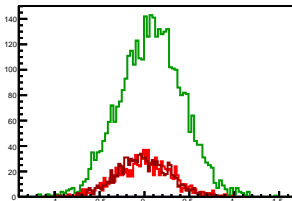
### Cycle 9, Diffs

Entries: 475	Entries: 3769	Entries: 930
Mean: 0.0157 +/- 0.0139	Mean: 0.0786 +/- 0.0057	Mean: 0.0110 +/- 0.0099
Std Dev: 0.3023 +/- 0.0098	Std Dev: 0.3491 +/- 0.0040	Std Dev: 0.3030 +/- 0.0070



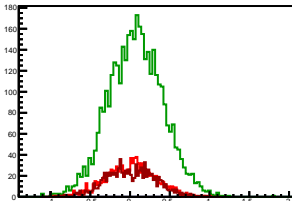
### Cycle 10, Diffs

Entries: 980	Entries: 3765	Entries: 1010
Mean: -0.0027 +/- 0.0099	Mean: 0.0738 +/- 0.0057	Mean: -0.0146 +/- 0.0091
Std Dev: 0.3085 +/- 0.0070	Std Dev: 0.3504 +/- 0.0040	Std Dev: 0.2908 +/- 0.0065



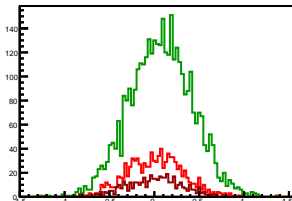
### Cycle 11, Diffs

Entries: 1047	Entries: 3802	Entries: 953
Mean: 0.0066 +/- 0.0095	Mean: 0.0719 +/- 0.0056	Mean: 0.0117 +/- 0.0102
Std Dev: 0.3069 +/- 0.0067	Std Dev: 0.3423 +/- 0.0039	Std Dev: 0.3138 +/- 0.0072



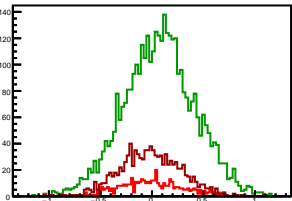
### Cycle 12, Diffs

Entries: 981	Entries: 3753	Entries: 458
Mean: 0.0127 +/- 0.0099	Mean: 0.0739 +/- 0.0057	Mean: 0.0045 +/- 0.0142
Std Dev: 0.3092 +/- 0.0070	Std Dev: 0.3481 +/- 0.0040	Std Dev: 0.3033 +/- 0.0100



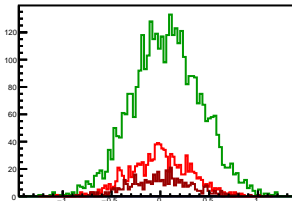
### Cycle 13, Diffs

Entries: 444	Entries: 3801	Entries: 1031
Mean: -0.0097 +/- 0.0143	Mean: 0.0703 +/- 0.0056	Mean: -0.0147 +/- 0.0092
Std Dev: 0.3011 +/- 0.0101	Std Dev: 0.3461 +/- 0.0040	Std Dev: 0.2964 +/- 0.0065



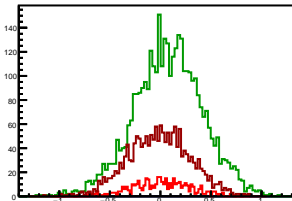
### Cycle 14, Diffs

Entries: 1029	Entries: 3723	Entries: 472
Mean: 0.0005 +/- 0.0094	Mean: 0.0631 +/- 0.0058	Mean: 0.0051 +/- 0.0143
Std Dev: 0.3016 +/- 0.0066	Std Dev: 0.3513 +/- 0.0041	Std Dev: 0.3106 +/- 0.0101



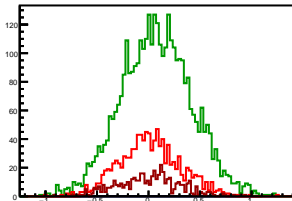
### Cycle 15, Diffs

Entries: 444	Entries: 3774	Entries: 1757
Mean: -0.0007 +/- 0.0140	Mean: 0.0765 +/- 0.0055	Mean: -0.0132 +/- 0.0073
Std Dev: 0.2945 +/- 0.0099	Std Dev: 0.3406 +/- 0.0039	Std Dev: 0.3068 +/- 0.0052



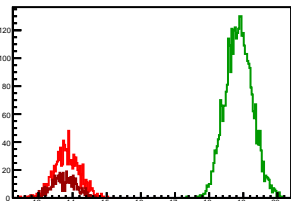
### Cycle 16, Diffs

Entries: 1094	Entries: 3699	Entries: 465
Mean: 0.0121 +/- 0.0091	Mean: 0.0756 +/- 0.0056	Mean: 0.0016 +/- 0.0139
Std Dev: 0.3008 +/- 0.0064	Std Dev: 0.3434 +/- 0.0040	Std Dev: 0.2989 +/- 0.0098



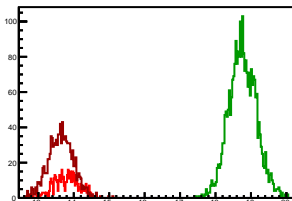
### Cycle 1, Sums

Entries: 1007	Entries: 3724	Entries: 520
Mean: 13.8341 +/- 0.0116	Mean: 18.8676 +/- 0.0065	Mean: 13.7415 +/- 0.0155
Std Dev: 0.3693 +/- 0.0082	Std Dev: 0.3945 +/- 0.0046	Std Dev: 0.3541 +/- 0.0110



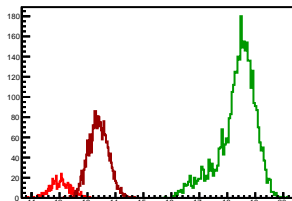
### Cycle 2, Sums

Entries: 497	Entries: 2641	Entries: 1103
Mean: 13.7967 +/- 0.0158	Mean: 18.7640 +/- 0.0075	Mean: 13.6323 +/- 0.0106
Std Dev: 0.3517 +/- 0.0112	Std Dev: 0.3875 +/- 0.0053	Std Dev: 0.3535 +/- 0.0075



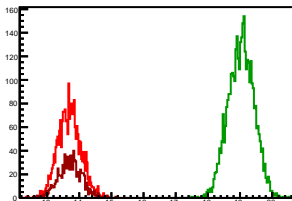
### Cycle 3, Sums

Entries: 573	Entries: 3763	Entries: 2351
Mean: 12.0298 +/- 0.0153	Mean: 18.3569 +/- 0.0109	Mean: 13.3939 +/- 0.0072
Std Dev: 0.3670 +/- 0.0108	Std Dev: 0.6711 +/- 0.0077	Std Dev: 0.3514 +/- 0.0051



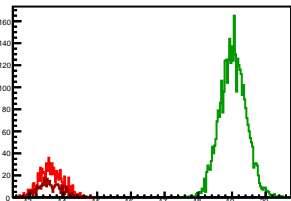
### Cycle 4, Sums

Entries: 2345	Entries: 3756	Entries: 907
Mean: 13.6920 +/- 0.0074	Mean: 19.0337 +/- 0.0065	Mean: 13.7205 +/- 0.0122
Std Dev: 0.3574 +/- 0.0052	Std Dev: 0.4007 +/- 0.0046	Std Dev: 0.3672 +/- 0.0096



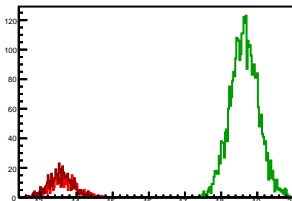
### Cycle 5, Sums

Entries: 933	Entries: 3776	Entries: 466
Mean: 13.6309 +/- 0.0114	Mean: 19.0289 +/- 0.0063	Mean: 13.5918 +/- 0.0153
Std Dev: 0.3476 +/- 0.0080	Std Dev: 0.3872 +/- 0.0045	Std Dev: 0.3307 +/- 0.0108



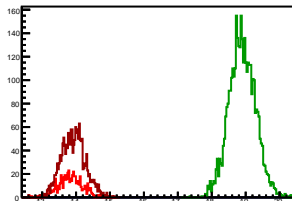
### Cycle 6, Sums

Entries: 475	Entries: 3747	Entries: 557
Mean: 13.6582 +/- 0.0159	Mean: 18.6410 +/- 0.0064	Mean: 13.5487 +/- 0.0140
Std Dev: 0.3475 +/- 0.0113	Std Dev: 0.3892 +/- 0.0045	Std Dev: 0.3302 +/- 0.0099



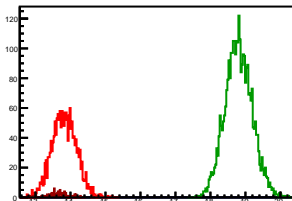
### Cycle 7, Sums

Entries: 557	Entries: 3744	Entries: 1778
Mean: 13.8408 +/- 0.0155	Mean: 18.8964 +/- 0.0064	Mean: 13.9186 +/- 0.0083
Std Dev: 0.3652 +/- 0.0109	Std Dev: 0.3899 +/- 0.0045	Std Dev: 0.3498 +/- 0.0059



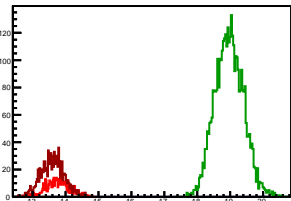
### Cycle 8, Sums

Entries: 1727	Entries: 3181	Entries: 88
Mean: 13.8195 +/- 0.0083	Mean: 18.8059 +/- 0.0069	Mean: 13.6089 +/- 0.0319
Std Dev: 0.3466 +/- 0.0059	Std Dev: 0.3881 +/- 0.0049	Std Dev: 0.2996 +/- 0.0226



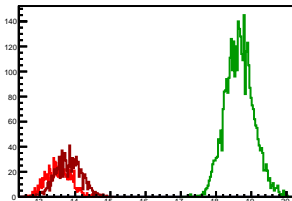
### Cycle 9, Sums

Entries: 475	Entries: 3769	Entries: 930
Mean: 13.7628 +/- 0.0157	Mean: 18.9717 +/- 0.0070	Mean: 13.6095 +/- 0.0115
Std Dev: 0.3424 +/- 0.0111	Std Dev: 0.4320 +/- 0.0050	Std Dev: 0.3496 +/- 0.0081



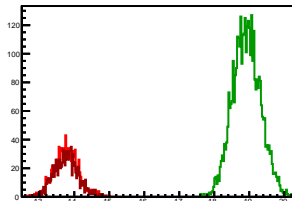
### Cycle 10, Sums

Entries: 980	Entries: 3765	Entries: 1010
Mean: 13.5283 +/- 0.0108	Mean: 18.6669 +/- 0.0065	Mean: 13.8108 +/- 0.0114
Std Dev: 0.3396 +/- 0.0077	Std Dev: 0.4007 +/- 0.0046	Std Dev: 0.3620 +/- 0.0081



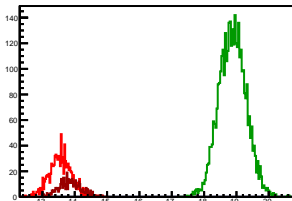
### Cycle 11, Sums

Entries: 1047	Entries: 3802	Entries: 953
Mean: 13.7641 +/- 0.0107	Mean: 18.9229 +/- 0.0065	Mean: 13.7706 +/- 0.0111
Std Dev: 0.3460 +/- 0.0076	Std Dev: 0.3980 +/- 0.0046	Std Dev: 0.3415 +/- 0.0078



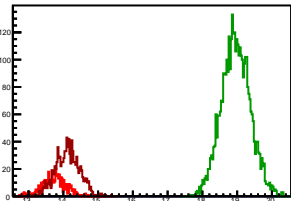
### Cycle 12, Sums

Entries: 981	Entries: 3753	Entries: 458
Mean: 13.5583 +/- 0.0109	Mean: 18.8789 +/- 0.0068	Mean: 13.8437 +/- 0.0155
Std Dev: 0.3403 +/- 0.0077	Std Dev: 0.4182 +/- 0.0048	Std Dev: 0.3320 +/- 0.0110



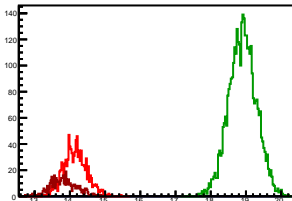
### Cycle 13, Sums

Entries: 444	Entries: 3801	Entries: 1031
Mean: 13.7317 +/- 0.0166	Mean: 18.9630 +/- 0.0067	Mean: 14.1179 +/- 0.0108
Std Dev: 0.3595 +/- 0.0118	Std Dev: 0.4139 +/- 0.0047	Std Dev: 0.3456 +/- 0.0076



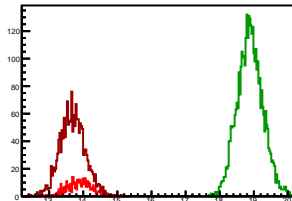
### Cycle 14, Sums

Entries: 1029	Entries: 3723	Entries: 472
Mean: 14.1439 +/- 0.0104	Mean: 18.9028 +/- 0.0064	Mean: 13.8224 +/- 0.0170
Std Dev: 0.3345 +/- 0.0074	Std Dev: 0.3912 +/- 0.0045	Std Dev: 0.3699 +/- 0.0120



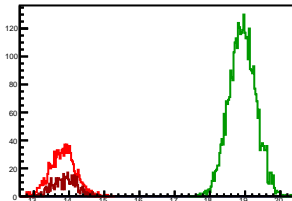
### Cycle 15, Sums

Entries: 444	Entries: 3774	Entries: 1757
Mean: 13.8902 +/- 0.0164	Mean: 18.8891 +/- 0.0061	Mean: 13.6915 +/- 0.0088
Std Dev: 0.3459 +/- 0.0116	Std Dev: 0.3725 +/- 0.0043	Std Dev: 0.3700 +/- 0.0062



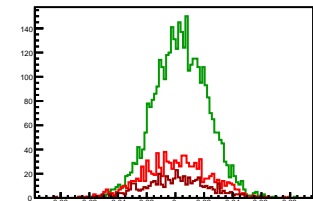
### Cycle 16, Sums

Entries: 1094	Entries: 3699	Entries: 465
Mean: 13.8233 +/- 0.0108	Mean: 18.9209 +/- 0.0062	Mean: 13.8856 +/- 0.0156
Std Dev: 0.3556 +/- 0.0076	Std Dev: 0.3777 +/- 0.0044	Std Dev: 0.3362 +/- 0.0110



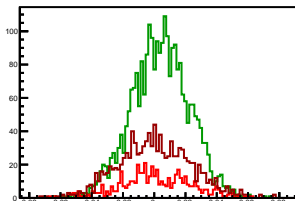
### Cycle 1, Asyms

Entries: 1007	Entries: 3724	Entries: 520
Mean: 0.0006 +/- 0.0007	Mean: 0.0039 +/- 0.0003	Mean: 0.0001 +/- 0.0010
Std Dev: 0.0227 +/- 0.0005	Std Dev: 0.0185 +/- 0.0002	Std Dev: 0.0223 +/- 0.0007



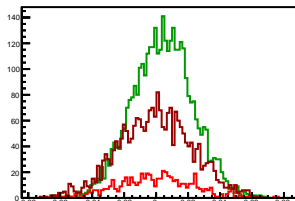
### Cycle 2, Asyms

Entries: 497	Entries: 2641	Entries: 1103
Mean: 0.0006 +/- 0.0010	Mean: 0.0040 +/- 0.0004	Mean: 0.0005 +/- 0.0007
Std Dev: 0.0226 +/- 0.0007	Std Dev: 0.0184 +/- 0.0003	Std Dev: 0.0232 +/- 0.0005



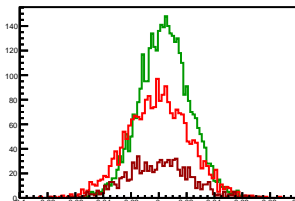
### Cycle 3, Asyms

Entries: 573	Entries: 3763	Entries: 2351
Mean: -0.0000 +/- 0.0010	Mean: 0.0039 +/- 0.0003	Mean: -0.0002 +/- 0.0005
Std Dev: 0.0235 +/- 0.0007	Std Dev: 0.0189 +/- 0.0002	Std Dev: 0.0230 +/- 0.0003



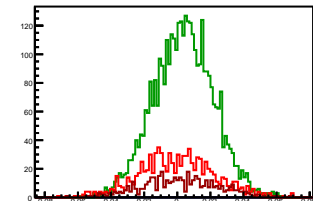
### Cycle 4, Asyms

Entries: 2345	Entries: 3756	Entries: 907
Mean: -0.0005 +/- 0.0005	Mean: 0.0041 +/- 0.0003	Mean: -0.0003 +/- 0.0008
Std Dev: 0.0226 +/- 0.0003	Std Dev: 0.0181 +/- 0.0002	Std Dev: 0.0229 +/- 0.0005



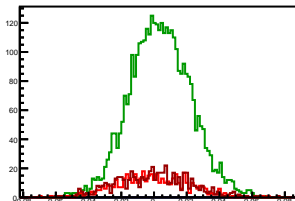
### Cycle 5, Asyms

Entries: 933	Entries: 3776	Entries: 466
Mean: -0.0003 +/- 0.0007	Mean: 0.0037 +/- 0.0003	Mean: 0.0012 +/- 0.0011
Std Dev: 0.0227 +/- 0.0005	Std Dev: 0.0181 +/- 0.0002	Std Dev: 0.0228 +/- 0.0007



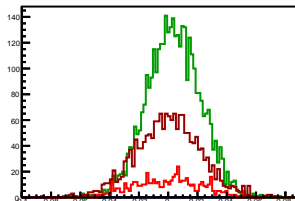
### Cycle 6, Asyms

Entries: 475	Entries: 3747	Entries: 557
Mean: -0.0009 +/- 0.0010	Mean: 0.0039 +/- 0.0003	Mean: -0.0005 +/- 0.0009
Std Dev: 0.0221 +/- 0.0007	Std Dev: 0.0186 +/- 0.0002	Std Dev: 0.0224 +/- 0.0007



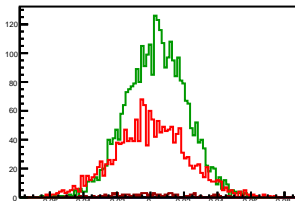
### Cycle 7, Asyms

Entries: 557	Entries: 3744	Entries: 1778
Mean: -0.0015 +/- 0.0010	Mean: 0.0037 +/- 0.0003	Mean: -0.0002 +/- 0.0005
Std Dev: 0.0230 +/- 0.0007	Std Dev: 0.0182 +/- 0.0002	Std Dev: 0.0221 +/- 0.0004



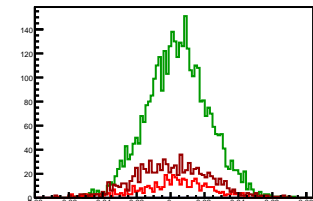
### Cycle 8, Asyms

Entries: 1727	Entries: 3181	Entries: 88
Mean: 0.0000 +/- 0.0005	Mean: 0.0038 +/- 0.0003	Mean: 0.0009 +/- 0.0023
Std Dev: 0.0218 +/- 0.0004	Std Dev: 0.0179 +/- 0.0002	Std Dev: 0.0215 +/- 0.0016



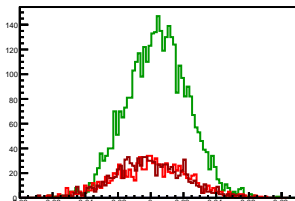
### Cycle 9, Asyms

Entries: 475	Entries: 3769	Entries: 930
Mean: 0.0011 +/- 0.0010	Mean: 0.0042 +/- 0.0003	Mean: 0.0008 +/- 0.0007
Std Dev: 0.0219 +/- 0.0007	Std Dev: 0.0184 +/- 0.0002	Std Dev: 0.0222 +/- 0.0005



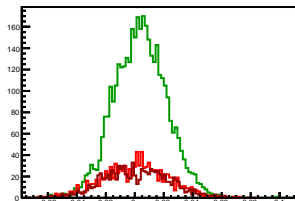
### Cycle 10, Asyms

Entries: 980	Entries: 3765	Entries: 1010
Mean: -0.0002 +/- 0.0007	Mean: 0.0040 +/- 0.0003	Mean: -0.0011 +/- 0.0007
Std Dev: 0.0228 +/- 0.0005	Std Dev: 0.0188 +/- 0.0002	Std Dev: 0.0210 +/- 0.0005



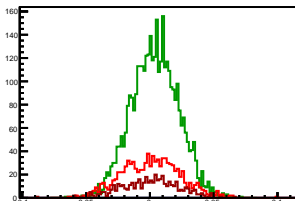
### Cycle 11, Asyms

Entries: 1047	Entries: 3802	Entries: 953
Mean: 0.0005 +/- 0.0007	Mean: 0.0038 +/- 0.0003	Mean: 0.0008 +/- 0.0007
Std Dev: 0.0223 +/- 0.0005	Std Dev: 0.0181 +/- 0.0002	Std Dev: 0.0227 +/- 0.0005



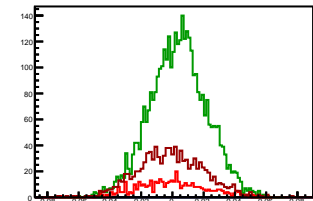
### Cycle 12, Asyms

Entries: 981	Entries: 3753	Entries: 458
Mean: 0.0009 +/- 0.0007	Mean: 0.0039 +/- 0.0003	Mean: 0.0003 +/- 0.0010
Std Dev: 0.0228 +/- 0.0005	Std Dev: 0.0184 +/- 0.0002	Std Dev: 0.0219 +/- 0.0007



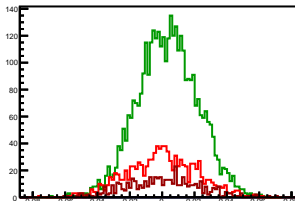
### Cycle 13, Asyms

Entries: 444	Entries: 3801	Entries: 1031
Mean: -0.0007 +/- 0.0010	Mean: 0.0037 +/- 0.0003	Mean: -0.0011 +/- 0.0007
Std Dev: 0.0219 +/- 0.0007	Std Dev: 0.0182 +/- 0.0002	Std Dev: 0.0210 +/- 0.0005



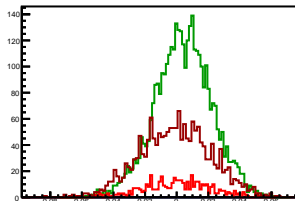
### Cycle 14, Asyms

Entries: 1029	Entries: 3723	Entries: 472
Mean: 0.0000 +/- 0.0007	Mean: 0.0033 +/- 0.0003	Mean: 0.0004 +/- 0.0010
Std Dev: 0.0213 +/- 0.0005	Std Dev: 0.0186 +/- 0.0002	Std Dev: 0.0224 +/- 0.0007



### Cycle 15, Asyms

Entries: 444	Entries: 3774	Entries: 1757
Mean: -0.0001 +/- 0.0010	Mean: 0.0041 +/- 0.0003	Mean: -0.0009 +/- 0.0005
Std Dev: 0.0211 +/- 0.0007	Std Dev: 0.0180 +/- 0.0002	Std Dev: 0.0224 +/- 0.0004



### Cycle 16, Asyms

Entries: 1094	Entries: 3699	Entries: 465
Mean: 0.0008 +/- 0.0007	Mean: 0.0040 +/- 0.0003	Mean: 0.0001 +/- 0.0010
Std Dev: 0.0217 +/- 0.0005	Std Dev: 0.0181 +/- 0.0002	Std Dev: 0.0215 +/- 0.0007

