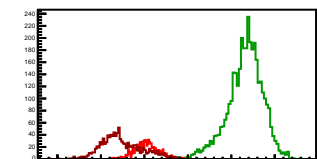
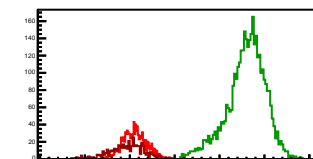


Cycle 1, PosHel

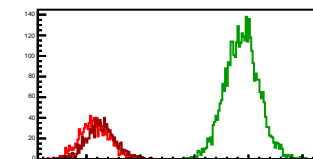
Entries: 899	Entries: 3680	Entries: 1117
Mean: 8.0504 +/- 0.0091	Mean: 10.3171 +/- 0.0067	Mean: 7.4745 +/- 0.0142
Std Dev: 0.2724 +/- 0.0064	Std Dev: 0.4061 +/- 0.0047	Std Dev: 0.4742 +/- 0.0100

**Cycle 2, PosHel**

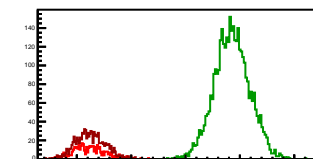
Entries: 1129	Entries: 3733	Entries: 467
Mean: 8.1122 +/- 0.0078	Mean: 10.5914 +/- 0.0071	Mean: 7.9099 +/- 0.0182
Std Dev: 0.2617 +/- 0.0055	Std Dev: 0.4312 +/- 0.0050	Std Dev: 0.3927 +/- 0.0129

**Cycle 3, PosHel**

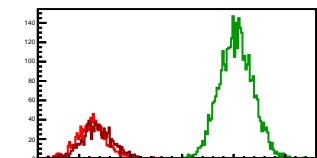
Entries: 1043	Entries: 3724	Entries: 1062
Mean: 8.1600 +/- 0.0084	Mean: 10.8784 +/- 0.0051	Mean: 8.2722 +/- 0.0083
Std Dev: 0.2701 +/- 0.0059	Std Dev: 0.3085 +/- 0.0036	Std Dev: 0.2689 +/- 0.0058

**Cycle 4, PosHel**

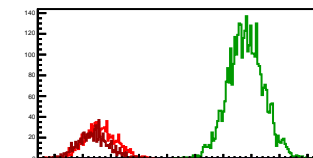
Entries: 458	Entries: 3726	Entries: 968
Mean: 8.2321 +/- 0.0134	Mean: 10.8540 +/- 0.0053	Mean: 8.2474 +/- 0.0086
Std Dev: 0.2858 +/- 0.0094	Std Dev: 0.3237 +/- 0.0038	Std Dev: 0.2691 +/- 0.0061

**Cycle 5, PosHel**

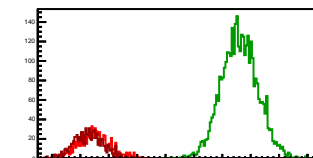
Entries: 1015	Entries: 3711	Entries: 972
Mean: 8.2497 +/- 0.0087	Mean: 11.0482 +/- 0.0053	Mean: 8.3547 +/- 0.0097
Std Dev: 0.2766 +/- 0.0061	Std Dev: 0.3209 +/- 0.0037	Std Dev: 0.3017 +/- 0.0068

**Cycle 6, PosHel**

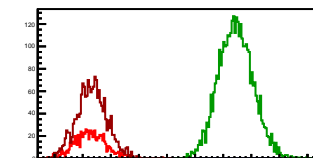
Entries: 1013	Entries: 3726	Entries: 858
Mean: 8.3144 +/- 0.0088	Mean: 10.9015 +/- 0.0051	Mean: 8.1883 +/- 0.0094
Std Dev: 0.2814 +/- 0.0063	Std Dev: 0.3132 +/- 0.0036	Std Dev: 0.2740 +/- 0.0066

**Cycle 7, PosHel**

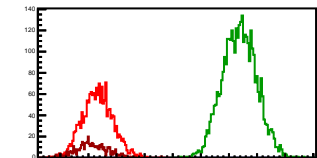
Entries: 893	Entries: 3694	Entries: 861
Mean: 8.2530 +/- 0.0092	Mean: 10.8049 +/- 0.0052	Mean: 8.1403 +/- 0.0091
Std Dev: 0.2749 +/- 0.0065	Std Dev: 0.3161 +/- 0.0037	Std Dev: 0.2672 +/- 0.0064

**Cycle 8, PosHel**

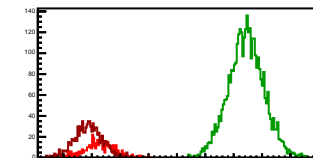
Entries: 884	Entries: 3705	Entries: 1787
Mean: 8.1312 +/- 0.0089	Mean: 10.7237 +/- 0.0050	Mean: 8.1613 +/- 0.0063
Std Dev: 0.2651 +/- 0.0063	Std Dev: 0.3358 +/- 0.0036	Std Dev: 0.2678 +/- 0.0045

**Cycle 9, PosHel**

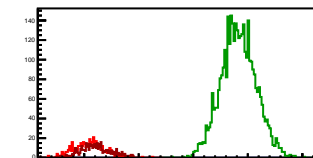
Entries: 1780	Entries: 3678	Entries: 498
Mean: 8.1629 +/- 0.0064	Mean: 10.6863 +/- 0.0050	Mean: 8.0647 +/- 0.0121
Std Dev: 0.2683 +/- 0.0045	Std Dev: 0.3016 +/- 0.0035	Std Dev: 0.2695 +/- 0.0085

**Cycle 10, PosHel**

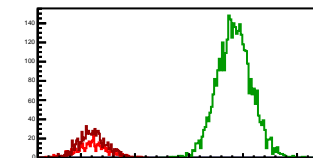
Entries: 497	Entries: 3710	Entries: 919
Mean: 8.1390 +/- 0.0116	Mean: 10.7200 +/- 0.0052	Mean: 7.9456 +/- 0.0084
Std Dev: 0.2575 +/- 0.0082	Std Dev: 0.3145 +/- 0.0037	Std Dev: 0.2549 +/- 0.0059

**Cycle 11, PosHel**

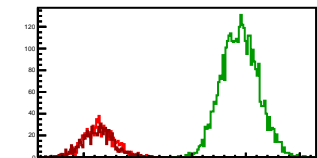
Entries: 455	Entries: 3759	Entries: 482
Mean: 8.0952 +/- 0.0131	Mean: 10.6299 +/- 0.0052	Mean: 8.2168 +/- 0.0124
Std Dev: 0.2792 +/- 0.0093	Std Dev: 0.3214 +/- 0.0037	Std Dev: 0.2731 +/- 0.0088

**Cycle 12, PosHel**

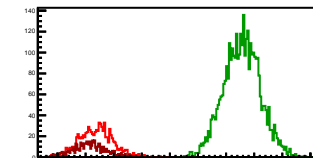
Entries: 490	Entries: 3691	Entries: 839
Mean: 8.2133 +/- 0.0128	Mean: 10.8412 +/- 0.0053	Mean: 8.2155 +/- 0.0091
Std Dev: 0.2839 +/- 0.0091	Std Dev: 0.3192 +/- 0.0037	Std Dev: 0.2641 +/- 0.0064

**Cycle 13, PosHel**

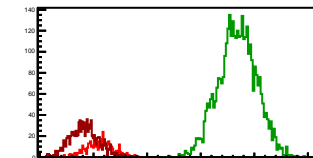
Entries: 884	Entries: 3703	Entries: 832
Mean: 8.2816 +/- 0.0094	Mean: 10.8868 +/- 0.0055	Mean: 8.2637 +/- 0.0099
Std Dev: 0.2865 +/- 0.0068	Std Dev: 0.3368 +/- 0.0039	Std Dev: 0.2852 +/- 0.0070

**Cycle 14, PosHel**

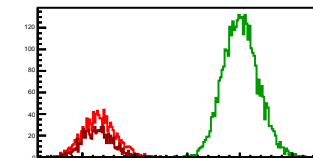
Entries: 861	Entries: 3691	Entries: 493
Mean: 8.1954 +/- 0.0101	Mean: 10.7808 +/- 0.0053	Mean: 8.0704 +/- 0.0127
Std Dev: 0.2972 +/- 0.0072	Std Dev: 0.3245 +/- 0.0038	Std Dev: 0.2819 +/- 0.0090

**Cycle 15, PosHel**

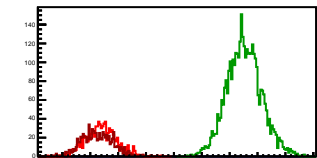
Entries: 490	Entries: 3730	Entries: 1020
Mean: 8.1201 +/- 0.0116	Mean: 10.6824 +/- 0.0058	Mean: 7.8275 +/- 0.0084
Std Dev: 0.2559 +/- 0.0082	Std Dev: 0.3549 +/- 0.0041	Std Dev: 0.2692 +/- 0.0060

**Cycle 16, PosHel**

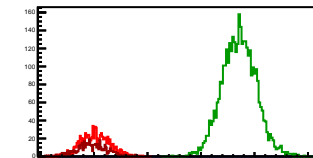
Entries: 1165	Entries: 3712	Entries: 887
Mean: 8.2329 +/- 0.0093	Mean: 11.0155 +/- 0.0055	Mean: 8.2858 +/- 0.0093
Std Dev: 0.3160 +/- 0.0065	Std Dev: 0.3324 +/- 0.0039	Std Dev: 0.2782 +/- 0.0066

**Cycle 17, PosHel**

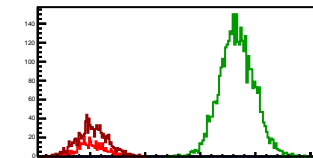
Entries: 899	Entries: 3722	Entries: 851
Mean: 8.1952 +/- 0.0094	Mean: 10.7609 +/- 0.0051	Mean: 8.1183 +/- 0.0097
Std Dev: 0.2824 +/- 0.0067	Std Dev: 0.3137 +/- 0.0036	Std Dev: 0.2827 +/- 0.0069

**Cycle 18, PosHel**

Entries: 863	Entries: 3729	Entries: 472
Mean: 8.0205 +/- 0.0094	Mean: 10.7111 +/- 0.0052	Mean: 7.9591 +/- 0.0130
Std Dev: 0.2764 +/- 0.0067	Std Dev: 0.3183 +/- 0.0037	Std Dev: 0.2820 +/- 0.0092

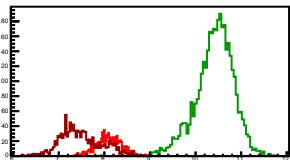
**Cycle 19, PosHel**

Entries: 458	Entries: 3735	Entries: 1069
Mean: 8.0120 +/- 0.0127	Mean: 10.6640 +/- 0.0051	Mean: 8.0421 +/- 0.0085
Std Dev: 0.2707 +/- 0.0089	Std Dev: 0.3108 +/- 0.0036	Std Dev: 0.2773 +/- 0.0060

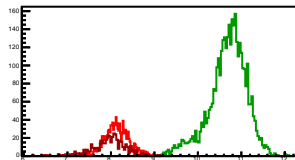


Cycle 1, NegHel

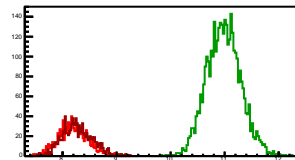
Entries: 899	Entries: 3680	Entries: 1117
Mean: 8.0904 +/- 0.0089	Mean: 10.4164 +/- 0.0068	Mean: 7.4876 +/- 0.0139
Std Dev: 0.2663 +/- 0.0063	Std Dev: 0.4142 +/- 0.0048	Std Dev: 0.4640 +/- 0.0098

**Cycle 2, NegHel**

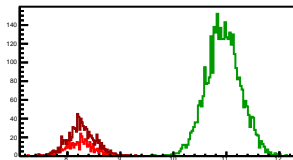
Entries: 1129	Entries: 3733	Entries: 467
Mean: 8.1430 +/- 0.0082	Mean: 10.6865 +/- 0.0071	Mean: 7.9519 +/- 0.0187
Std Dev: 0.2759 +/- 0.0058	Std Dev: 0.4323 +/- 0.0050	Std Dev: 0.4039 +/- 0.0132

**Cycle 3, NegHel**

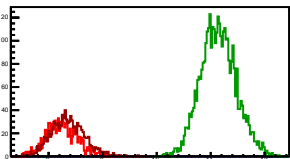
Entries: 1043	Entries: 3724	Entries: 1062
Mean: 8.1950 +/- 0.0085	Mean: 10.9833 +/- 0.0052	Mean: 8.2728 +/- 0.0086
Std Dev: 0.2749 +/- 0.0060	Std Dev: 0.3159 +/- 0.0037	Std Dev: 0.2797 +/- 0.0061

**Cycle 4, NegHel**

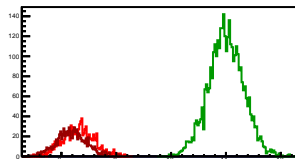
Entries: 458	Entries: 3726	Entries: 968
Mean: 8.2412 +/- 0.0128	Mean: 10.9440 +/- 0.0054	Mean: 8.2652 +/- 0.0087
Std Dev: 0.2690 +/- 0.0089	Std Dev: 0.3269 +/- 0.0038	Std Dev: 0.2693 +/- 0.0061

**Cycle 5, NegHel**

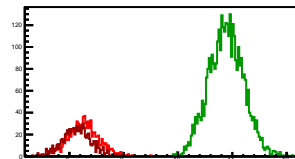
Entries: 1015	Entries: 3711	Entries: 972
Mean: 8.2459 +/- 0.0092	Mean: 11.1410 +/- 0.0054	Mean: 8.3588 +/- 0.0099
Std Dev: 0.2934 +/- 0.0065	Std Dev: 0.3289 +/- 0.0038	Std Dev: 0.3084 +/- 0.0070

**Cycle 6, NegHel**

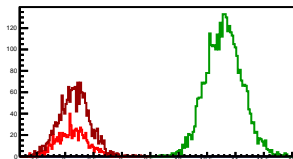
Entries: 1013	Entries: 3726	Entries: 858
Mean: 8.3148 +/- 0.0091	Mean: 11.0005 +/- 0.0052	Mean: 8.1843 +/- 0.0094
Std Dev: 0.2883 +/- 0.0064	Std Dev: 0.3182 +/- 0.0037	Std Dev: 0.2757 +/- 0.0067

**Cycle 7, NegHel**

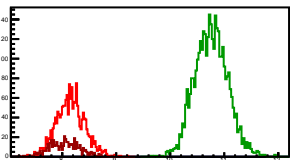
Entries: 893	Entries: 3694	Entries: 861
Mean: 8.2693 +/- 0.0094	Mean: 10.8863 +/- 0.0053	Mean: 8.1406 +/- 0.0091
Std Dev: 0.2799 +/- 0.0066	Std Dev: 0.3202 +/- 0.0037	Std Dev: 0.2679 +/- 0.0065

**Cycle 8, NegHel**

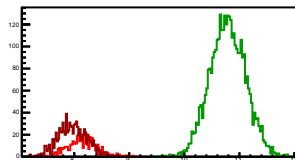
Entries: 884	Entries: 3705	Entries: 1787
Mean: 8.1281 +/- 0.0091	Mean: 10.7981 +/- 0.0052	Mean: 8.1619 +/- 0.0064
Std Dev: 0.2694 +/- 0.0064	Std Dev: 0.3170 +/- 0.0037	Std Dev: 0.2721 +/- 0.0046

**Cycle 9, NegHel**

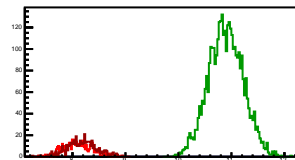
Entries: 1780	Entries: 3678	Entries: 498
Mean: 8.1555 +/- 0.0062	Mean: 10.7576 +/- 0.0050	Mean: 8.0401 +/- 0.0124
Std Dev: 0.2618 +/- 0.0044	Std Dev: 0.3054 +/- 0.0036	Std Dev: 0.2763 +/- 0.0088

**Cycle 10, NegHel**

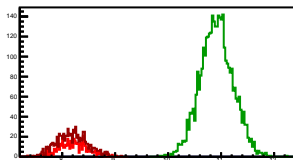
Entries: 497	Entries: 3710	Entries: 919
Mean: 8.1412 +/- 0.0121	Mean: 10.7875 +/- 0.0053	Mean: 7.9688 +/- 0.0087
Std Dev: 0.2704 +/- 0.0088	Std Dev: 0.3240 +/- 0.0038	Std Dev: 0.2636 +/- 0.0061

**Cycle 11, NegHel**

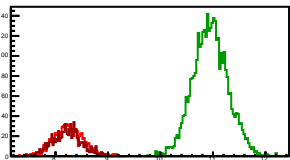
Entries: 455	Entries: 3759	Entries: 482
Mean: 8.0949 +/- 0.0128	Mean: 10.8944 +/- 0.0053	Mean: 8.1784 +/- 0.0123
Std Dev: 0.2736 +/- 0.0091	Std Dev: 0.3255 +/- 0.0038	Std Dev: 0.2705 +/- 0.0087

**Cycle 12, NegHel**

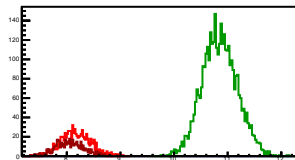
Entries: 490	Entries: 3691	Entries: 839
Mean: 8.2086 +/- 0.0123	Mean: 10.9164 +/- 0.0051	Mean: 8.1896 +/- 0.0100
Std Dev: 0.2715 +/- 0.0087	Std Dev: 0.3100 +/- 0.0036	Std Dev: 0.2900 +/- 0.0071

**Cycle 13, NegHel**

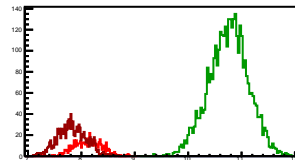
Entries: 884	Entries: 3703	Entries: 832
Mean: 8.2518 +/- 0.0091	Mean: 10.9503 +/- 0.0055	Mean: 8.2258 +/- 0.0099
Std Dev: 0.2819 +/- 0.0067	Std Dev: 0.3321 +/- 0.0039	Std Dev: 0.2860 +/- 0.0070

**Cycle 14, NegHel**

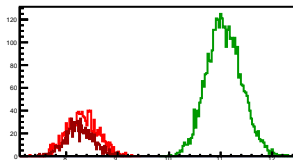
Entries: 861	Entries: 3691	Entries: 493
Mean: 8.1678 +/- 0.0096	Mean: 10.8512 +/- 0.0054	Mean: 8.0554 +/- 0.0119
Std Dev: 0.2804 +/- 0.0068	Std Dev: 0.3267 +/- 0.0038	Std Dev: 0.2652 +/- 0.0084

**Cycle 15, NegHel**

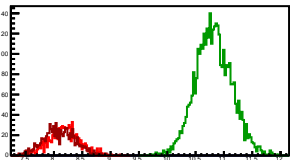
Entries: 490	Entries: 3730	Entries: 1020
Mean: 8.1259 +/- 0.0116	Mean: 10.7559 +/- 0.0061	Mean: 7.8275 +/- 0.0085
Std Dev: 0.2562 +/- 0.0082	Std Dev: 0.3720 +/- 0.0043	Std Dev: 0.2721 +/- 0.0060

**Cycle 16, NegHel**

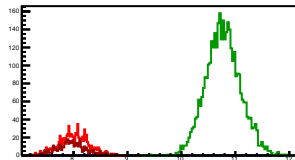
Entries: 1165	Entries: 3712	Entries: 887
Mean: 8.3174 +/- 0.0088	Mean: 11.0675 +/- 0.0055	Mean: 8.2570 +/- 0.0092
Std Dev: 0.2995 +/- 0.0062	Std Dev: 0.3375 +/- 0.0039	Std Dev: 0.2732 +/- 0.0065

**Cycle 17, NegHel**

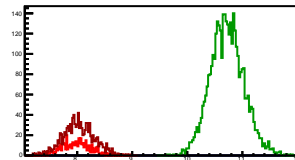
Entries: 899	Entries: 3722	Entries: 851
Mean: 8.1776 +/- 0.0091	Mean: 10.8173 +/- 0.0053	Mean: 8.0969 +/- 0.0096
Std Dev: 0.2715 +/- 0.0064	Std Dev: 0.3317 +/- 0.0037	Std Dev: 0.2803 +/- 0.0068

**Cycle 18, NegHel**

Entries: 863	Entries: 3729	Entries: 472
Mean: 8.0037 +/- 0.0092	Mean: 10.7739 +/- 0.0052	Mean: 7.9562 +/- 0.0126
Std Dev: 0.2708 +/- 0.0065	Std Dev: 0.3192 +/- 0.0037	Std Dev: 0.2731 +/- 0.0089

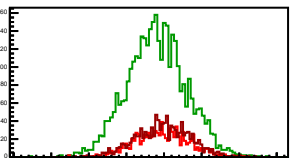
**Cycle 19, NegHel**

Entries: 458	Entries: 3735	Entries: 1069
Mean: 7.9732 +/- 0.0124	Mean: 10.7215 +/- 0.0050	Mean: 8.0290 +/- 0.0086
Std Dev: 0.2652 +/- 0.0088	Std Dev: 0.3050 +/- 0.0035	Std Dev: 0.2824 +/- 0.0061

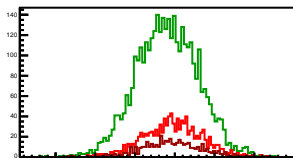


Cycle 1, Diffs

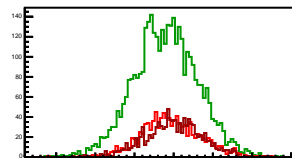
Entries: 899	Entries: 3680	Entries: 1117
Mean: -0.0300 +/- 0.0119	Mean: -0.0992 +/- 0.0065	Mean: -0.0131 +/- 0.0108
Std Dev: 0.3554 +/- 0.0084	Std Dev: 0.3949 +/- 0.0046	Std Dev: 0.3618 +/- 0.0077

**Cycle 2, Diffs**

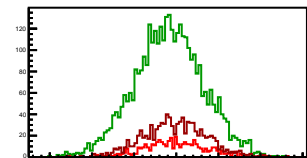
Entries: 1129	Entries: 3733	Entries: 467
Mean: -0.0309 +/- 0.0110	Mean: -0.0951 +/- 0.0064	Mean: -0.0420 +/- 0.0173
Std Dev: 0.3682 +/- 0.0077	Std Dev: 0.3890 +/- 0.0045	Std Dev: 0.3731 +/- 0.0122

**Cycle 3, Diffs**

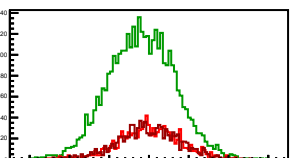
Entries: 1043	Entries: 3724	Entries: 1062
Mean: -0.0351 +/- 0.0117	Mean: -0.1049 +/- 0.0067	Mean: -0.0006 +/- 0.0111
Std Dev: 0.3769 +/- 0.0083	Std Dev: 0.4091 +/- 0.0047	Std Dev: 0.3620 +/- 0.0079

**Cycle 4, Diffs**

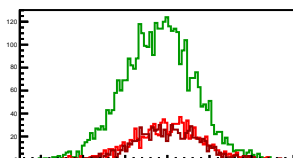
Entries: 458	Entries: 3726	Entries: 968
Mean: -0.0091 +/- 0.0172	Mean: -0.0899 +/- 0.0067	Mean: -0.0178 +/- 0.0119
Std Dev: 0.3675 +/- 0.0121	Std Dev: 0.4097 +/- 0.0047	Std Dev: 0.3705 +/- 0.0084

**Cycle 5, Diffs**

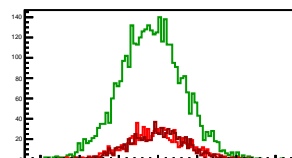
Entries: 1015	Entries: 3711	Entries: 972
Mean: 0.0037 +/- 0.0121	Mean: -0.0928 +/- 0.0068	Mean: -0.0041 +/- 0.0125
Std Dev: 0.3861 +/- 0.0086	Std Dev: 0.4158 +/- 0.0048	Std Dev: 0.3893 +/- 0.0088

**Cycle 6, Diffs**

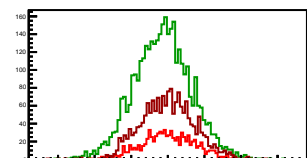
Entries: 1013	Entries: 3726	Entries: 858
Mean: -0.0004 +/- 0.0121	Mean: -0.0990 +/- 0.0067	Mean: 0.0040 +/- 0.0125
Std Dev: 0.3858 +/- 0.0086	Std Dev: 0.4102 +/- 0.0048	Std Dev: 0.3652 +/- 0.0088

**Cycle 7, Diffs**

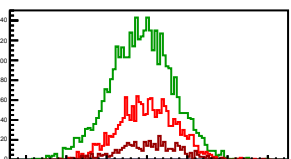
Entries: 893	Entries: 3694	Entries: 861
Mean: -0.0163 +/- 0.0126	Mean: -0.0815 +/- 0.0066	Mean: -0.0004 +/- 0.0125
Std Dev: 0.3762 +/- 0.0089	Std Dev: 0.4034 +/- 0.0047	Std Dev: 0.3661 +/- 0.0088

**Cycle 8, Diffs**

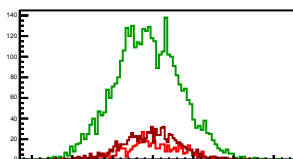
Entries: 884	Entries: 3705	Entries: 1787
Mean: 0.0031 +/- 0.0121	Mean: -0.0744 +/- 0.0065	Mean: -0.0006 +/- 0.0087
Std Dev: 0.3607 +/- 0.0086	Std Dev: 0.3932 +/- 0.0046	Std Dev: 0.3661 +/- 0.0081

**Cycle 9, Diffs**

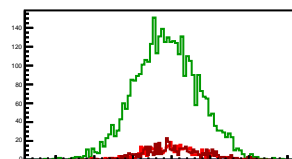
Entries: 1780	Entries: 3679	Entries: 498
Mean: 0.0094 +/- 0.0084	Mean: -0.0713 +/- 0.0065	Mean: 0.0245 +/- 0.0166
Std Dev: 0.3540 +/- 0.0059	Std Dev: 0.3913 +/- 0.0046	Std Dev: 0.3702 +/- 0.0117

**Cycle 10, Diffs**

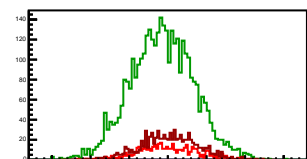
Entries: 497	Entries: 3710	Entries: 919
Mean: -0.0022 +/- 0.0162	Mean: -0.0675 +/- 0.0067	Mean: -0.0232 +/- 0.0115
Std Dev: 0.3605 +/- 0.0114	Std Dev: 0.4085 +/- 0.0047	Std Dev: 0.3498 +/- 0.0082

**Cycle 11, Diffs**

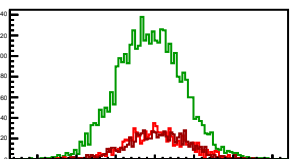
Entries: 455	Entries: 3759	Entries: 482
Mean: 0.0003 +/- 0.0169	Mean: -0.0645 +/- 0.0067	Mean: 0.0384 +/- 0.0174
Std Dev: 0.3610 +/- 0.0120	Std Dev: 0.4119 +/- 0.0048	Std Dev: 0.3829 +/- 0.0123

**Cycle 12, Diffs**

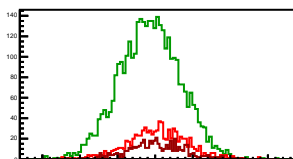
Entries: 490	Entries: 3691	Entries: 839
Mean: 0.0046 +/- 0.0174	Mean: -0.0753 +/- 0.0068	Mean: 0.0259 +/- 0.0126
Std Dev: 0.3853 +/- 0.0123	Std Dev: 0.4125 +/- 0.0048	Std Dev: 0.3644 +/- 0.0089

**Cycle 13, Diffs**

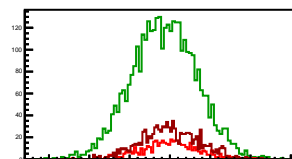
Entries: 884	Entries: 3703	Entries: 832
Mean: 0.0228 +/- 0.0123	Mean: -0.0634 +/- 0.0068	Mean: 0.0214 +/- 0.0135
Std Dev: 0.3793 +/- 0.0090	Std Dev: 0.4152 +/- 0.0048	Std Dev: 0.3891 +/- 0.0095

**Cycle 14, Diffs**

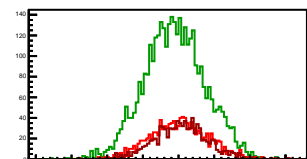
Entries: 861	Entries: 3691	Entries: 919
Mean: 0.0276 +/- 0.0133	Mean: -0.0703 +/- 0.0067	Mean: 0.0149 +/- 0.0164
Std Dev: 0.3898 +/- 0.0094	Std Dev: 0.4042 +/- 0.0047	Std Dev: 0.3639 +/- 0.0116

**Cycle 15, Diffs**

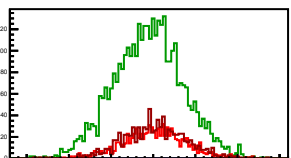
Entries: 490	Entries: 3730	Entries: 1020
Mean: -0.0058 +/- 0.0160	Mean: -0.0735 +/- 0.0066	Mean: 0.0001 +/- 0.0112
Std Dev: 0.3540 +/- 0.0113	Std Dev: 0.4034 +/- 0.0047	Std Dev: 0.3589 +/- 0.0079

**Cycle 16, Diffs**

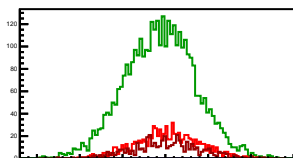
Entries: 1165	Entries: 3712	Entries: 887
Mean: 0.0065 +/- 0.0118	Mean: -0.0520 +/- 0.0070	Mean: 0.0288 +/- 0.0127
Std Dev: 0.4039 +/- 0.0084	Std Dev: 0.4255 +/- 0.0049	Std Dev: 0.3794 +/- 0.0090

**Cycle 17, Diffs**

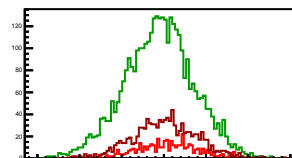
Entries: 899	Entries: 3722	Entries: 851
Mean: 0.0177 +/- 0.0123	Mean: -0.0564 +/- 0.0067	Mean: 0.0214 +/- 0.0129
Std Dev: 0.3684 +/- 0.0087	Std Dev: 0.4103 +/- 0.0048	Std Dev: 0.3757 +/- 0.0091

**Cycle 18, Diffs**

Entries: 863	Entries: 3729	Entries: 472
Mean: 0.0168 +/- 0.0127	Mean: -0.0628 +/- 0.0067	Mean: 0.0028 +/- 0.0180
Std Dev: 0.3735 +/- 0.0090	Std Dev: 0.4118 +/- 0.0048	Std Dev: 0.3919 +/- 0.0127

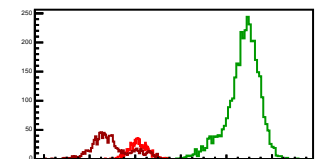
**Cycle 19, Diffs**

Entries: 458	Entries: 3735	Entries: 1069
Mean: 0.0389 +/- 0.0173	Mean: -0.0575 +/- 0.0068	Mean: 0.0131 +/- 0.0116
Std Dev: 0.3696 +/- 0.0122	Std Dev: 0.4135 +/- 0.0048	Std Dev: 0.3780 +/- 0.0082



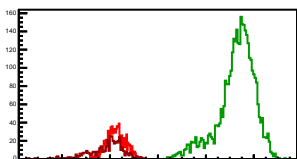
Cycle 1, Sums

Entries: 899	Entries: 3680	Entries: 1117
Mean: 16.1309 \pm 0.0135	Mean: 20.7335 \pm 0.0119	Mean: 14.9620 \pm 0.0259
Std Dev: 0.4049 \pm 0.0095	Std Dev: 0.7190 \pm 0.0084	Std Dev: 0.8657 \pm 0.0183



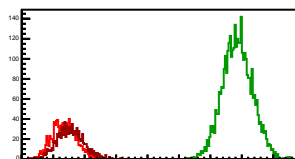
Cycle 2, Sums

Entries: 1129	Entries: 3733	Entries: 467
Mean: 16.2552 \pm 0.0117	Mean: 21.2779 \pm 0.0126	Mean: 15.8618 \pm 0.0326
Std Dev: 0.3920 \pm 0.0082	Std Dev: 0.7710 \pm 0.0089	Std Dev: 0.7040 \pm 0.0230



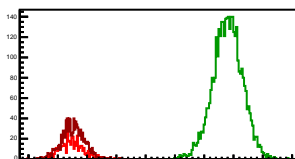
Cycle 3, Sums

Entries: 1043	Entries: 3724	Entries: 1062
Mean: 16.3550 \pm 0.0122	Mean: 21.8617 \pm 0.0077	Mean: 16.5449 \pm 0.0127
Std Dev: 0.3936 \pm 0.0086	Std Dev: 0.4718 \pm 0.0055	Std Dev: 0.4123 \pm 0.0089



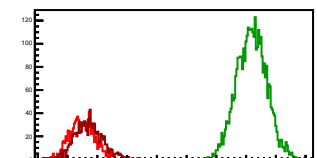
Cycle 4, Sums

Entries: 458	Entries: 3726	Entries: 968
Mean: 16.4732 \pm 0.0194	Mean: 21.7980 \pm 0.0083	Mean: 16.5126 \pm 0.0126
Std Dev: 0.4160 \pm 0.0137	Std Dev: 0.5054 \pm 0.0059	Std Dev: 0.3907 \pm 0.0089



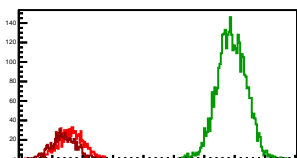
Cycle 5, Sums

Entries: 1015	Entries: 3711	Entries: 972
Mean: 16.4956 \pm 0.0132	Mean: 22.1892 \pm 0.0082	Mean: 16.7135 \pm 0.0151
Std Dev: 0.4197 \pm 0.0093	Std Dev: 0.4994 \pm 0.0058	Std Dev: 0.4699 \pm 0.0107



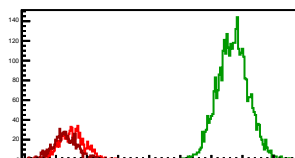
Cycle 6, Sums

Entries: 1013	Entries: 3726	Entries: 858
Mean: 16.6291 \pm 0.0132	Mean: 21.9020 \pm 0.0079	Mean: 16.3725 \pm 0.0140
Std Dev: 0.4193 \pm 0.0093	Std Dev: 0.4900 \pm 0.0056	Std Dev: 0.4108 \pm 0.0099



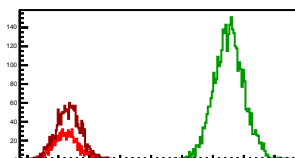
Cycle 7, Sums

Entries: 893	Entries: 3694	Entries: 861
Mean: 16.5224 \pm 0.0136	Mean: 21.6912 \pm 0.0081	Mean: 16.2809 \pm 0.0133
Std Dev: 0.4077 \pm 0.0096	Std Dev: 0.4947 \pm 0.0058	Std Dev: 0.3903 \pm 0.0094



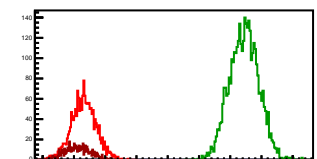
Cycle 8, Sums

Entries: 884	Entries: 3705	Entries: 1787
Mean: 16.2592 \pm 0.0133	Mean: 21.5218 \pm 0.0079	Mean: 16.3232 \pm 0.0094
Std Dev: 0.3945 \pm 0.0094	Std Dev: 0.4831 \pm 0.0056	Std Dev: 0.3968 \pm 0.0096



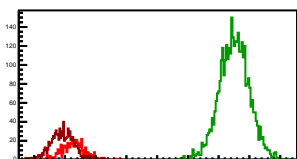
Cycle 9, Sums

Entries: 1780	Entries: 3678	Entries: 498
Mean: 16.3164 \pm 0.0094	Mean: 21.4439 \pm 0.0077	Mean: 16.1048 \pm 0.0180
Std Dev: 0.3947 \pm 0.0066	Std Dev: 0.4644 \pm 0.0054	Std Dev: 0.4012 \pm 0.0127



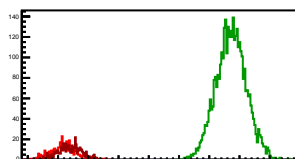
Cycle 10, Sums

Entries: 497	Entries: 3710	Entries: 919
Mean: 16.2802 \pm 0.0173	Mean: 21.5074 \pm 0.0081	Mean: 15.9143 \pm 0.0126
Std Dev: 0.3859 \pm 0.0122	Std Dev: 0.4908 \pm 0.0057	Std Dev: 0.3828 \pm 0.0089



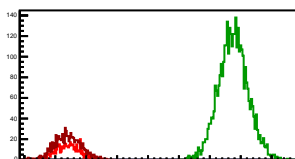
Cycle 11, Sums

Entries: 455	Entries: 3759	Entries: 482
Mean: 16.1901 \pm 0.0196	Mean: 21.7244 \pm 0.0081	Mean: 16.3953 \pm 0.0176
Std Dev: 0.4187 \pm 0.0139	Std Dev: 0.4989 \pm 0.0058	Std Dev: 0.3859 \pm 0.0124



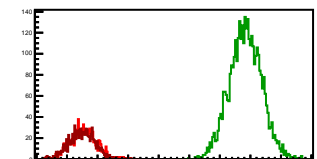
Cycle 12, Sums

Entries: 490	Entries: 3691	Entries: 839
Mean: 16.4219 \pm 0.0181	Mean: 21.7576 \pm 0.0078	Mean: 16.4051 \pm 0.0144
Std Dev: 0.4001 \pm 0.0128	Std Dev: 0.4752 \pm 0.0055	Std Dev: 0.4182 \pm 0.0102



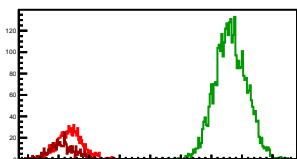
Cycle 13, Sums

Entries: 884	Entries: 3703	Entries: 832
Mean: 16.5334 \pm 0.0142	Mean: 21.8371 \pm 0.0086	Mean: 16.4895 \pm 0.0145
Std Dev: 0.4234 \pm 0.0101	Std Dev: 0.5244 \pm 0.0061	Std Dev: 0.4181 \pm 0.0103



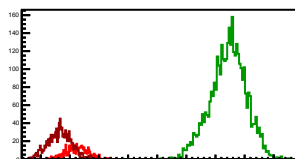
Cycle 14, Sums

Entries: 861	Entries: 3691	Entries: 493
Mean: 16.3631 \pm 0.0145	Mean: 21.6320 \pm 0.0084	Mean: 15.1258 \pm 0.0184
Std Dev: 0.4266 \pm 0.0103	Std Dev: 0.5107 \pm 0.0059	Std Dev: 0.4089 \pm 0.0130



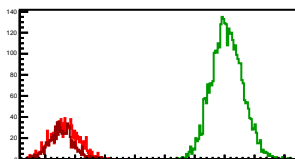
Cycle 15, Sums

Entries: 490	Entries: 3730	Entries: 1020
Mean: 16.2460 \pm 0.0167	Mean: 21.4382 \pm 0.0099	Mean: 15.6550 \pm 0.0127
Std Dev: 0.3702 \pm 0.0118	Std Dev: 0.6049 \pm 0.0070	Std Dev: 0.4070 \pm 0.0090



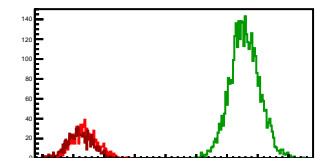
Cycle 16, Sums

Entries: 1165	Entries: 3712	Entries: 887
Mean: 16.6413 \pm 0.0136	Mean: 22.0830 \pm 0.0085	Mean: 16.5428 \pm 0.0134
Std Dev: 0.4648 \pm 0.0096	Std Dev: 0.5175 \pm 0.0060	Std Dev: 0.4000 \pm 0.0095



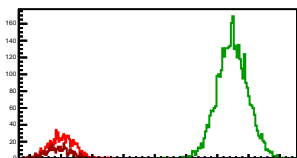
Cycle 17, Sums

Entries: 899	Entries: 3722	Entries: 851
Mean: 16.3728 \pm 0.0138	Mean: 21.5783 \pm 0.0080	Mean: 16.2152 \pm 0.0144
Std Dev: 0.4138 \pm 0.0098	Std Dev: 0.4852 \pm 0.0056	Std Dev: 0.4193 \pm 0.0102



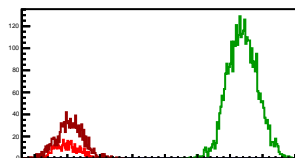
Cycle 18, Sums

Entries: 863	Entries: 3729	Entries: 472
Mean: 16.0241 \pm 0.0136	Mean: 21.4850 \pm 0.0080	Mean: 15.9153 \pm 0.0181
Std Dev: 0.3999 \pm 0.0096	Std Dev: 0.4868 \pm 0.0056	Std Dev: 0.3941 \pm 0.0128



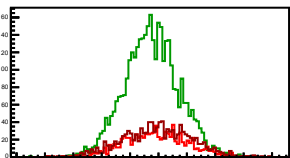
Cycle 19, Sums

Entries: 458	Entries: 3735	Entries: 1069
Mean: 15.9852 \pm 0.0181	Mean: 21.3855 \pm 0.0075	Mean: 16.0710 \pm 0.0128
Std Dev: 0.3882 \pm 0.0128	Std Dev: 0.4564 \pm 0.0053	Std Dev: 0.4128 \pm 0.0089



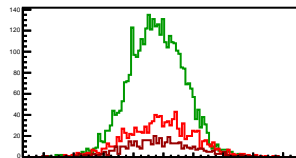
Cycle 1, Asyms

Entries: 899	Entries: 3680	Entries: 1117
Mean: -0.0019 +/- 0.0007	Mean: -0.0048 +/- 0.0003	Mean: -0.0009 +/- 0.0007
Std Dev: 0.0220 +/- 0.0005	Std Dev: 0.0190 +/- 0.0002	Std Dev: 0.0242 +/- 0.0005



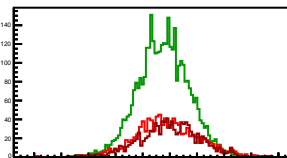
Cycle 2, Asyms

Entries: 1129	Entries: 3733	Entries: 467
Mean: -0.0019 +/- 0.0007	Mean: -0.0045 +/- 0.0003	Mean: -0.0026 +/- 0.0011
Std Dev: 0.0226 +/- 0.0005	Std Dev: 0.0183 +/- 0.0002	Std Dev: 0.0235 +/- 0.0008



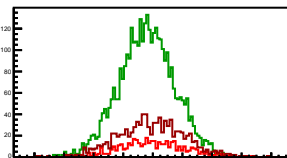
Cycle 3, Asyms

Entries: 1043	Entries: 3724	Entries: 1062
Mean: -0.0021 +/- 0.0007	Mean: -0.0048 +/- 0.0003	Mean: -0.0000 +/- 0.0007
Std Dev: 0.0230 +/- 0.0005	Std Dev: 0.0187 +/- 0.0002	Std Dev: 0.0218 +/- 0.0005



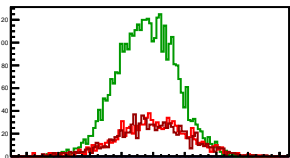
Cycle 4, Asyms

Entries: 458	Entries: 3726	Entries: 968
Mean: -0.0006 +/- 0.0010	Mean: -0.0041 +/- 0.0003	Mean: -0.0011 +/- 0.0007
Std Dev: 0.0223 +/- 0.0007	Std Dev: 0.0188 +/- 0.0002	Std Dev: 0.0224 +/- 0.0005



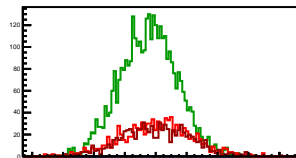
Cycle 5, Asyms

Entries: 1015	Entries: 3711	Entries: 972
Mean: 0.0003 +/- 0.0007	Mean: -0.0042 +/- 0.0003	Mean: -0.0002 +/- 0.0007
Std Dev: 0.0233 +/- 0.0005	Std Dev: 0.0187 +/- 0.0002	Std Dev: 0.0232 +/- 0.0005



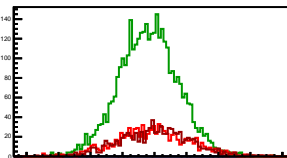
Cycle 6, Asyms

Entries: 1013	Entries: 3726	Entries: 858
Mean: -0.0000 +/- 0.0007	Mean: -0.0045 +/- 0.0003	Mean: 0.0002 +/- 0.0008
Std Dev: 0.0232 +/- 0.0005	Std Dev: 0.0187 +/- 0.0002	Std Dev: 0.0222 +/- 0.0005



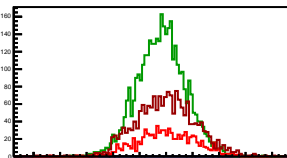
Cycle 7, Asyms

Entries: 893	Entries: 3694	Entries: 861
Mean: -0.0010 +/- 0.0008	Mean: -0.0038 +/- 0.0003	Mean: -0.0000 +/- 0.0008
Std Dev: 0.0227 +/- 0.0005	Std Dev: 0.0186 +/- 0.0002	Std Dev: 0.0225 +/- 0.0005



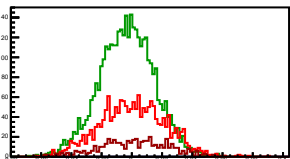
Cycle 8, Asyms

Entries: 884	Entries: 3705	Entries: 1787
Mean: 0.0002 +/- 0.0007	Mean: -0.0034 +/- 0.0003	Mean: -0.0000 +/- 0.0005
Std Dev: 0.0222 +/- 0.0005	Std Dev: 0.0182 +/- 0.0002	Std Dev: 0.0224 +/- 0.0004



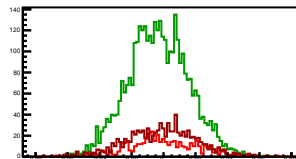
Cycle 9, Asyms

Entries: 1780	Entries: 3679	Entries: 498
Mean: 0.0006 +/- 0.0005	Mean: -0.0033 +/- 0.0003	Mean: 0.0015 +/- 0.0010
Std Dev: 0.0217 +/- 0.0004	Std Dev: 0.0182 +/- 0.0002	Std Dev: 0.0230 +/- 0.0007



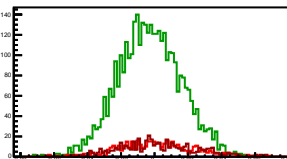
Cycle 10, Asyms

Entries: 497	Entries: 3710	Entries: 919
Mean: -0.0001 +/- 0.0010	Mean: -0.0031 +/- 0.0003	Mean: -0.0014 +/- 0.0007
Std Dev: 0.0221 +/- 0.0007	Std Dev: 0.0190 +/- 0.0002	Std Dev: 0.0219 +/- 0.0005



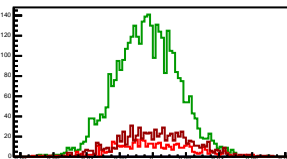
Cycle 11, Asyms

Entries: 455	Entries: 3759	Entries: 482
Mean: 0.0000 +/- 0.0010	Mean: -0.0030 +/- 0.0003	Mean: 0.0023 +/- 0.0011
Std Dev: 0.0222 +/- 0.0007	Std Dev: 0.0189 +/- 0.0002	Std Dev: 0.0233 +/- 0.0008



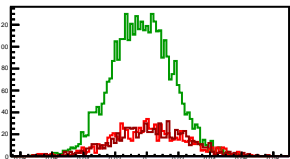
Cycle 12, Asyms

Entries: 490	Entries: 3691	Entries: 839
Mean: 0.0003 +/- 0.0011	Mean: -0.0035 +/- 0.0003	Mean: 0.0016 +/- 0.0008
Std Dev: 0.0234 +/- 0.0007	Std Dev: 0.0190 +/- 0.0002	Std Dev: 0.0222 +/- 0.0005



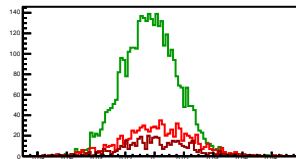
Cycle 13, Asyms

Entries: 884	Entries: 3703	Entries: 832
Mean: 0.0018 +/- 0.0008	Mean: -0.0029 +/- 0.0003	Mean: 0.0013 +/- 0.0008
Std Dev: 0.0229 +/- 0.0005	Std Dev: 0.0190 +/- 0.0002	Std Dev: 0.0236 +/- 0.0006



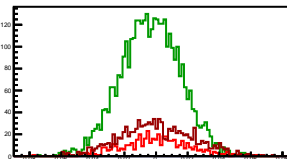
Cycle 14, Asyms

Entries: 861	Entries: 3691	Entries: 493
Mean: 0.0017 +/- 0.0008	Mean: -0.0029 +/- 0.0003	Mean: -0.0009 +/- 0.0010
Std Dev: 0.0237 +/- 0.0006	Std Dev: 0.0187 +/- 0.0002	Std Dev: 0.0225 +/- 0.0007



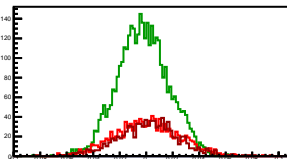
Cycle 15, Asyms

Entries: 490	Entries: 3730	Entries: 1020
Mean: -0.0004 +/- 0.0010	Mean: -0.0034 +/- 0.0003	Mean: 0.0000 +/- 0.0007
Std Dev: 0.0218 +/- 0.0007	Std Dev: 0.0188 +/- 0.0002	Std Dev: 0.0227 +/- 0.0005



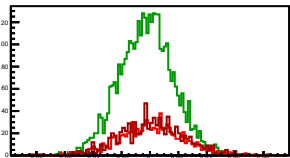
Cycle 16, Asyms

Entries: 1165	Entries: 3712	Entries: 887
Mean: 0.0004 +/- 0.0007	Mean: -0.0023 +/- 0.0003	Mean: 0.0017 +/- 0.0008
Std Dev: 0.0242 +/- 0.0005	Std Dev: 0.0192 +/- 0.0002	Std Dev: 0.0229 +/- 0.0005



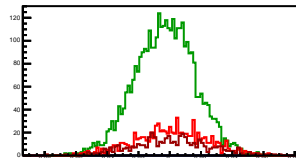
Cycle 17, Asyms

Entries: 899	Entries: 3722	Entries: 851
Mean: 0.0011 +/- 0.0008	Mean: -0.0026 +/- 0.0003	Mean: 0.0013 +/- 0.0008
Std Dev: 0.0225 +/- 0.0005	Std Dev: 0.0190 +/- 0.0002	Std Dev: 0.0231 +/- 0.0006



Cycle 18, Asyms

Entries: 863	Entries: 3729	Entries: 472
Mean: 0.0010 +/- 0.0008	Mean: -0.0029 +/- 0.0003	Mean: 0.0002 +/- 0.0011
Std Dev: 0.0233 +/- 0.0006	Std Dev: 0.0191 +/- 0.0002	Std Dev: 0.0245 +/- 0.0008



Cycle 19, Asyms

Entries: 458	Entries: 3735	Entries: 1069
Mean: 0.0024 +/- 0.0011	Mean: -0.0027 +/- 0.0003	Mean: 0.0000 +/- 0.0007
Std Dev: 0.0231 +/- 0.0006	Std Dev: 0.0193 +/- 0.0002	Std Dev: 0.0235 +/- 0.0005

