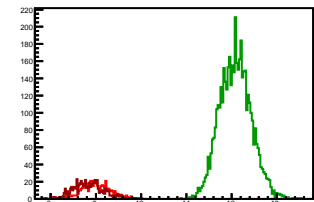


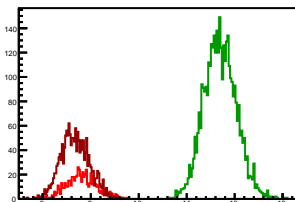
Cycle 1, PosHel

Entries: 543	Entries: 4650	Entries: 635
Mean: 9.0006 +/- 0.0142	Mean: 12.0837 +/- 0.0051	Mean: 8.8339 +/- 0.0132
Std Dev: 0.3308 +/- 0.0100	Std Dev: 0.3470 +/- 0.0036	Std Dev: 0.3331 +/- 0.0093



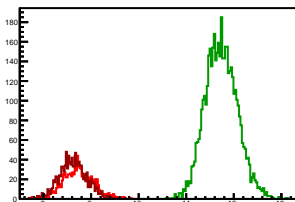
Cycle 2, PosHel

Entries: 625	Entries: 3920	Entries: 1718
Mean: 8.8104 +/- 0.0128	Mean: 11.6962 +/- 0.0054	Mean: 8.6730 +/- 0.0072
Std Dev: 0.3194 +/- 0.0090	Std Dev: 0.3389 +/- 0.0038	Std Dev: 0.2972 +/- 0.0051



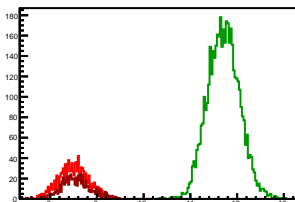
Cycle 3, PosHel

Entries: 998	Entries: 4647	Entries: 1159
Mean: 8.7311 +/- 0.0101	Mean: 11.7366 +/- 0.0050	Mean: 8.6223 +/- 0.0086
Std Dev: 0.3173 +/- 0.0071	Std Dev: 0.3382 +/- 0.0035	Std Dev: 0.2938 +/- 0.0061



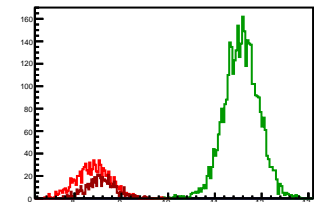
Cycle 4, PosHel

Entries: 1100	Entries: 4596	Entries: 658
Mean: 8.5036 +/- 0.0096	Mean: 11.7106 +/- 0.0050	Mean: 8.5619 +/- 0.0120
Std Dev: 0.3187 +/- 0.0068	Std Dev: 0.3398 +/- 0.0035	Std Dev: 0.3069 +/- 0.0095



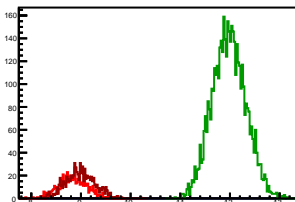
Cycle 5, PosHel

Entries: 911	Entries: 3768	Entries: 614
Mean: 8.4014 +/- 0.0123	Mean: 11.5677 +/- 0.0060	Mean: 8.5647 +/- 0.0127
Std Dev: 0.3700 +/- 0.0087	Std Dev: 0.3700 +/- 0.0043	Std Dev: 0.3140 +/- 0.0090



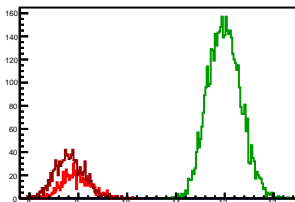
Cycle 6, PosHel

Entries: 608	Entries: 4658	Entries: 761
Mean: 8.8442 +/- 0.0119	Mean: 11.9794 +/- 0.0050	Mean: 8.9846 +/- 0.0105
Std Dev: 0.2935 +/- 0.0084	Std Dev: 0.3388 +/- 0.0035	Std Dev: 0.2898 +/- 0.0074



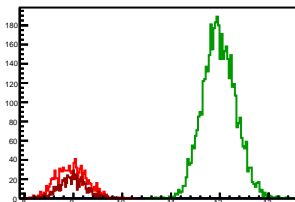
Cycle 7, PosHel

Entries: 727	Entries: 4662	Entries: 1103
Mean: 8.9706 +/- 0.0112	Mean: 11.9902 +/- 0.0048	Mean: 8.8278 +/- 0.0092
Std Dev: 0.3008 +/- 0.0079	Std Dev: 0.3311 +/- 0.0034	Std Dev: 0.3055 +/- 0.0065



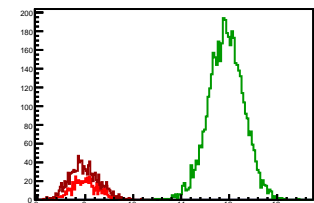
Cycle 8, PosHel

Entries: 1063	Entries: 4641	Entries: 700
Mean: 8.9622 +/- 0.0095	Mean: 11.9876 +/- 0.0049	Mean: 8.9882 +/- 0.0103
Std Dev: 0.3108 +/- 0.0067	Std Dev: 0.3363 +/- 0.0035	Std Dev: 0.2714 +/- 0.0073



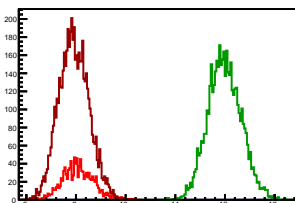
Cycle 9, PosHel

Entries: 682	Entries: 4603	Entries: 1203
Mean: 9.0155 +/- 0.0107	Mean: 11.9372 +/- 0.0054	Mean: 8.9810 +/- 0.0089
Std Dev: 0.2791 +/- 0.0076	Std Dev: 0.3660 +/- 0.0038	Std Dev: 0.3081 +/- 0.0063



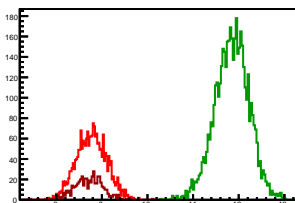
Cycle 10, PosHel

Entries: 1157	Entries: 4680	Entries: 5621
Mean: 9.0385 +/- 0.0090	Mean: 11.9928 +/- 0.0045	Mean: 8.9585 +/- 0.0040
Std Dev: 0.3066 +/- 0.0064	Std Dev: 0.3317 +/- 0.0034	Std Dev: 0.3018 +/- 0.0028



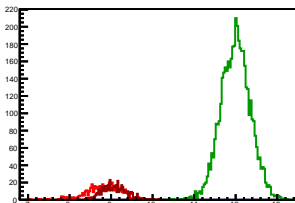
Cycle 11, PosHel

Entries: 2236	Entries: 4591	Entries: 515
Mean: 8.7712 +/- 0.0070	Mean: 11.8500 +/- 0.0055	Mean: 8.7087 +/- 0.0137
Std Dev: 0.3304 +/- 0.0049	Std Dev: 0.3752 +/- 0.0039	Std Dev: 0.3112 +/- 0.0097



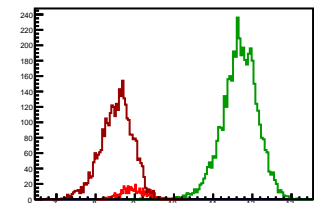
Cycle 12, PosHel

Entries: 502	Entries: 4553	Entries: 495
Mean: 8.8074 +/- 0.0188	Mean: 11.9998 +/- 0.0053	Mean: 9.0892 +/- 0.0132
Std Dev: 0.4212 +/- 0.0133	Std Dev: 0.3571 +/- 0.0037	Std Dev: 0.2946 +/- 0.0094



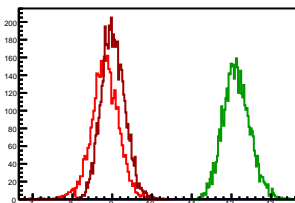
Cycle 13, PosHel

Entries: 489	Entries: 4590	Entries: 3367
Mean: 8.9679 +/- 0.0141	Mean: 11.6784 +/- 0.0066	Mean: 8.5328 +/- 0.0071
Std Dev: 0.3109 +/- 0.0099	Std Dev: 0.4492 +/- 0.0047	Std Dev: 0.4105 +/- 0.0050



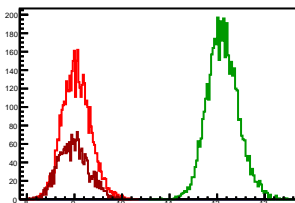
Cycle 14, PosHel

Entries: 3352	Entries: 4626	Entries: 5397
Mean: 8.8163 +/- 0.0060	Mean: 12.1275 +/- 0.0049	Mean: 9.0247 +/- 0.0040
Std Dev: 0.3456 +/- 0.0042	Std Dev: 0.3360 +/- 0.0035	Std Dev: 0.2964 +/- 0.0029



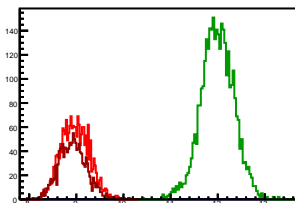
Cycle 15, PosHel

Entries: 4454	Entries: 4652	Entries: 2065
Mean: 9.0443 +/- 0.0044	Mean: 12.1176 +/- 0.0048	Mean: 8.9835 +/- 0.0069
Std Dev: 0.2956 +/- 0.0031	Std Dev: 0.3293 +/- 0.0034	Std Dev: 0.3138 +/- 0.0049



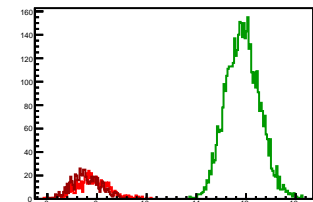
Cycle 16, PosHel

Entries: 2033	Entries: 3490	Entries: 1393
Mean: 8.9771 +/- 0.0067	Mean: 11.9912 +/- 0.0059	Mean: 8.9255 +/- 0.0078
Std Dev: 0.3021 +/- 0.0047	Std Dev: 0.3482 +/- 0.0042	Std Dev: 0.2920 +/- 0.0055



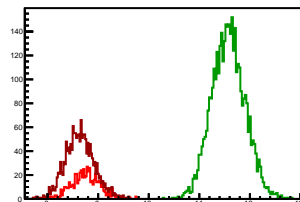
Cycle 1, NegHel

Entries: 543	Entries: 4650	Entries: 635
Mean: 8.9191 +/- 0.0143	Mean: 11.9356 +/- 0.0050	Mean: 8.7925 +/- 0.0119
Std Dev: 0.3342 +/- 0.0101	Std Dev: 0.3409 +/- 0.0035	Std Dev: 0.2988 +/- 0.0084



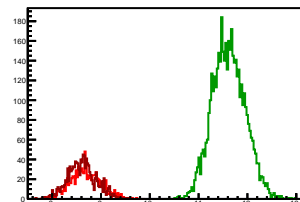
Cycle 2, NegHel

Entries: 625	Entries: 3920	Entries: 1718
Mean: 8.7493 +/- 0.0117	Mean: 11.5741 +/- 0.0053	Mean: 8.6409 +/- 0.0070
Std Dev: 0.2930 +/- 0.0083	Std Dev: 0.3320 +/- 0.0037	Std Dev: 0.2894 +/- 0.0049



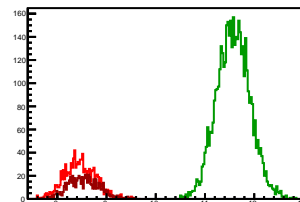
Cycle 3, NegHel

Entries: 998	Entries: 4647	Entries: 1159
Mean: 8.6781 +/- 0.0098	Mean: 11.6178 +/- 0.0050	Mean: 8.6079 +/- 0.0086
Std Dev: 0.3080 +/- 0.0069	Std Dev: 0.3377 +/- 0.0035	Std Dev: 0.2935 +/- 0.0061



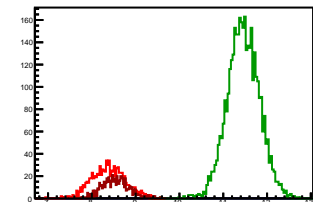
Cycle 4, NegHel

Entries: 1100	Entries: 4596	Entries: 658
Mean: 8.4589 +/- 0.0096	Mean: 11.5767 +/- 0.0050	Mean: 8.5327 +/- 0.0122
Std Dev: 0.3196 +/- 0.0068	Std Dev: 0.3393 +/- 0.0035	Std Dev: 0.3137 +/- 0.0096



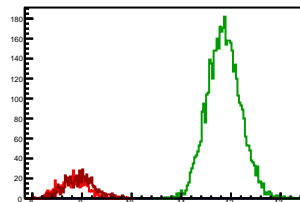
Cycle 5, NegHel

Entries: 911	Entries: 3768	Entries: 614
Mean: 8.3829 +/- 0.0126	Mean: 11.4590 +/- 0.0060	Mean: 8.5340 +/- 0.0121
Std Dev: 0.3802 +/- 0.0089	Std Dev: 0.3671 +/- 0.0042	Std Dev: 0.2986 +/- 0.0085



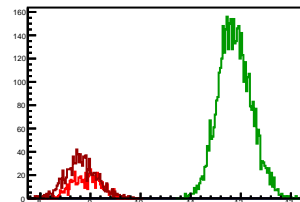
Cycle 6, NegHel

Entries: 608	Entries: 4658	Entries: 761
Mean: 8.8426 +/- 0.0123	Mean: 11.8565 +/- 0.0049	Mean: 8.9540 +/- 0.0110
Std Dev: 0.3033 +/- 0.0087	Std Dev: 0.3358 +/- 0.0035	Std Dev: 0.3033 +/- 0.0078



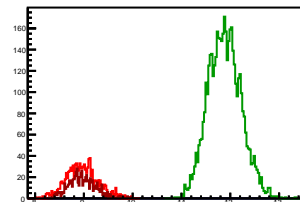
Cycle 7, NegHel

Entries: 727	Entries: 4662	Entries: 1103
Mean: 8.9243 +/- 0.0106	Mean: 11.8793 +/- 0.0048	Mean: 8.8159 +/- 0.0095
Std Dev: 0.2864 +/- 0.0075	Std Dev: 0.3289 +/- 0.0034	Std Dev: 0.3169 +/- 0.0067



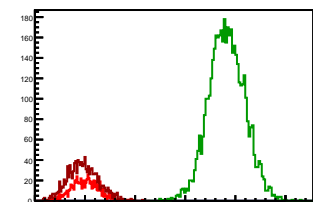
Cycle 8, NegHel

Entries: 1063	Entries: 4641	Entries: 700
Mean: 8.9616 +/- 0.0099	Mean: 11.8840 +/- 0.0049	Mean: 8.9667 +/- 0.0105
Std Dev: 0.3231 +/- 0.0070	Std Dev: 0.3350 +/- 0.0035	Std Dev: 0.2780 +/- 0.0074



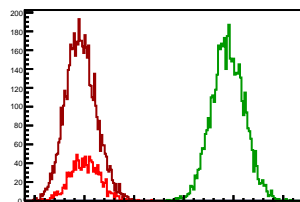
Cycle 9, NegHel

Entries: 682	Entries: 4603	Entries: 1203
Mean: 9.0021 +/- 0.0104	Mean: 11.8271 +/- 0.0053	Mean: 8.9591 +/- 0.0088
Std Dev: 0.2713 +/- 0.0073	Std Dev: 0.3588 +/- 0.0037	Std Dev: 0.3043 +/- 0.0062



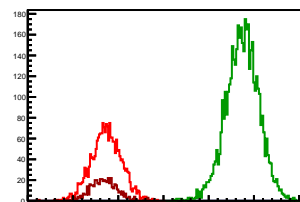
Cycle 10, NegHel

Entries: 1157	Entries: 4680	Entries: 5621
Mean: 9.0139 +/- 0.0089	Mean: 11.8888 +/- 0.0045	Mean: 8.9279 +/- 0.0041
Std Dev: 0.3017 +/- 0.0063	Std Dev: 0.3305 +/- 0.0034	Std Dev: 0.3102 +/- 0.0029



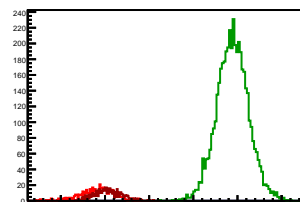
Cycle 11, NegHel

Entries: 2236	Entries: 4591	Entries: 515
Mean: 8.7363 +/- 0.0070	Mean: 11.7415 +/- 0.0054	Mean: 8.6709 +/- 0.0136
Std Dev: 0.3288 +/- 0.0049	Std Dev: 0.3656 +/- 0.0038	Std Dev: 0.3086 +/- 0.0096



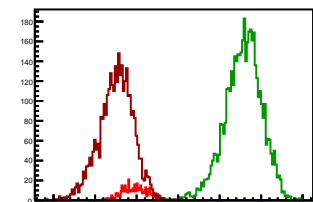
Cycle 12, NegHel

Entries: 502	Entries: 4553	Entries: 495
Mean: 8.8103 +/- 0.0178	Mean: 11.8892 +/- 0.0054	Mean: 9.0795 +/- 0.0136
Std Dev: 0.3977 +/- 0.0128	Std Dev: 0.3619 +/- 0.0038	Std Dev: 0.3033 +/- 0.0096



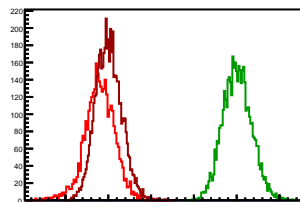
Cycle 13, NegHel

Entries: 489	Entries: 4590	Entries: 3367
Mean: 8.9677 +/- 0.0138	Mean: 11.5668 +/- 0.0065	Mean: 8.5049 +/- 0.0071
Std Dev: 0.3042 +/- 0.0097	Std Dev: 0.4428 +/- 0.0045	Std Dev: 0.4099 +/- 0.0050



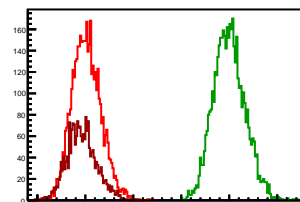
Cycle 14, NegHel

Entries: 3352	Entries: 4626	Entries: 5397
Mean: 8.7967 +/- 0.0060	Mean: 12.0145 +/- 0.0049	Mean: 9.0075 +/- 0.0041
Std Dev: 0.3477 +/- 0.0042	Std Dev: 0.3354 +/- 0.0035	Std Dev: 0.3023 +/- 0.0029



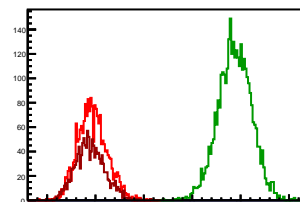
Cycle 15, NegHel

Entries: 4454	Entries: 4652	Entries: 2065
Mean: 9.0236 +/- 0.0045	Mean: 12.0006 +/- 0.0048	Mean: 8.9268 +/- 0.0067
Std Dev: 0.3000 +/- 0.0032	Std Dev: 0.3286 +/- 0.0034	Std Dev: 0.3044 +/- 0.0047



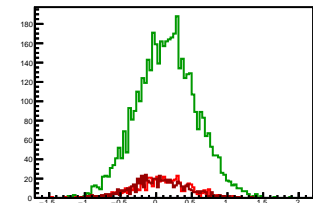
Cycle 16, NegHel

Entries: 2033	Entries: 3490	Entries: 1393
Mean: 8.9366 +/- 0.0067	Mean: 11.8766 +/- 0.0059	Mean: 8.8919 +/- 0.0081
Std Dev: 0.3031 +/- 0.0048	Std Dev: 0.3463 +/- 0.0041	Std Dev: 0.3026 +/- 0.0057



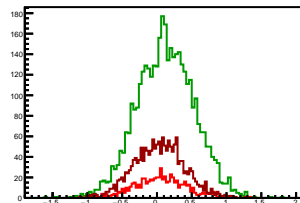
Cycle 1, Diffs

Entries: 543	Entries: 4650	Entries: 635
Mean: 0.0816 +/- 0.0165	Mean: 0.1482 +/- 0.0061	Mean: 0.0414 +/- 0.0156
Std Dev: 0.3854 +/- 0.0117	Std Dev: 0.4186 +/- 0.0043	Std Dev: 0.3932 +/- 0.0110



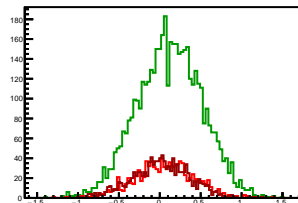
Cycle 2, Diffs

Entries: 625	Entries: 3920	Entries: 1718
Mean: 0.0611 +/- 0.0149	Mean: 0.1221 +/- 0.0065	Mean: 0.0320 +/- 0.0087
Std Dev: 0.3729 +/- 0.0105	Std Dev: 0.4097 +/- 0.0046	Std Dev: 0.3606 +/- 0.0062



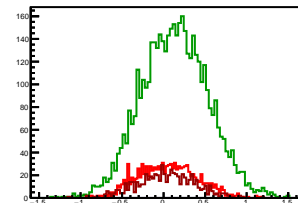
Cycle 3, Diffs

Entries: 998	Entries: 4647	Entries: 1159
Mean: 0.0530 +/- 0.0117	Mean: 0.1188 +/- 0.0059	Mean: 0.0144 +/- 0.0102
Std Dev: 0.3685 +/- 0.0083	Std Dev: 0.3992 +/- 0.0041	Std Dev: 0.3489 +/- 0.0072



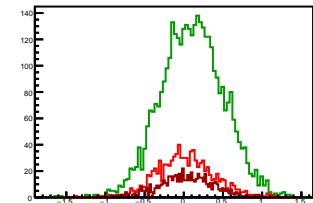
Cycle 4, Diffs

Entries: 1100	Entries: 4596	Entries: 658
Mean: 0.0447 +/- 0.0106	Mean: 0.1339 +/- 0.0059	Mean: 0.0292 +/- 0.0134
Std Dev: 0.3528 +/- 0.0075	Std Dev: 0.4021 +/- 0.0042	Std Dev: 0.3438 +/- 0.0095



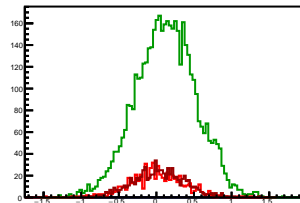
Cycle 5, Diffs

Entries: 911	Entries: 3768	Entries: 614
Mean: 0.0185 +/- 0.0121	Mean: 0.1087 +/- 0.0064	Mean: 0.0307 +/- 0.0137
Std Dev: 0.3640 +/- 0.0085	Std Dev: 0.3959 +/- 0.0046	Std Dev: 0.3394 +/- 0.0097



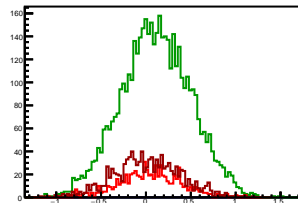
Cycle 6, Diffs

Entries: 608	Entries: 4658	Entries: 761
Mean: 0.0015 +/- 0.0148	Mean: 0.1229 +/- 0.0059	Mean: 0.0307 +/- 0.0125
Std Dev: 0.3653 +/- 0.0105	Std Dev: 0.4033 +/- 0.0042	Std Dev: 0.3446 +/- 0.0088



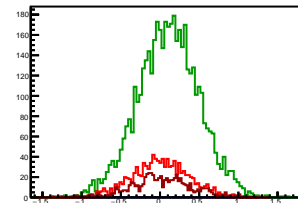
Cycle 7, Diffs

Entries: 727	Entries: 4662	Entries: 1103
Mean: 0.0462 +/- 0.0131	Mean: 0.1109 +/- 0.0057	Mean: 0.0119 +/- 0.0112
Std Dev: 0.3527 +/- 0.0092	Std Dev: 0.3896 +/- 0.0040	Std Dev: 0.3725 +/- 0.0079



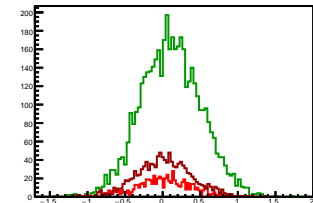
Cycle 8, Diffs

Entries: 1063	Entries: 4641	Entries: 700
Mean: 0.0006 +/- 0.0112	Mean: 0.1036 +/- 0.0058	Mean: 0.0215 +/- 0.0141
Std Dev: 0.3648 +/- 0.0079	Std Dev: 0.3934 +/- 0.0041	Std Dev: 0.3733 +/- 0.0100



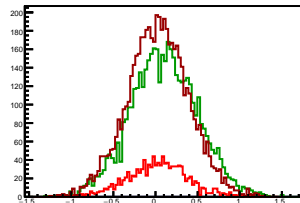
Cycle 9, Diffs

Entries: 682	Entries: 4603	Entries: 1203
Mean: 0.0133 +/- 0.0140	Mean: 0.1101 +/- 0.0059	Mean: 0.0219 +/- 0.0105
Std Dev: 0.3651 +/- 0.0099	Std Dev: 0.4002 +/- 0.0042	Std Dev: 0.3633 +/- 0.0074



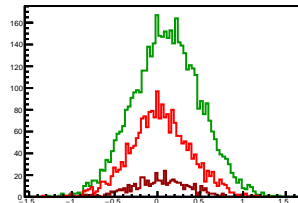
Cycle 10, Diffs

Entries: 1157	Entries: 4680	Entries: 5621
Mean: 0.0246 +/- 0.0105	Mean: 0.1041 +/- 0.0058	Mean: 0.0306 +/- 0.0049
Std Dev: 0.3563 +/- 0.0074	Std Dev: 0.3960 +/- 0.0041	Std Dev: 0.3645 +/- 0.0034



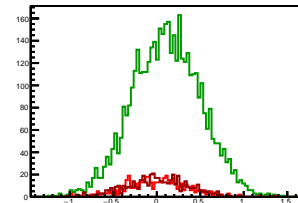
Cycle 11, Diffs

Entries: 2236	Entries: 4591	Entries: 515
Mean: 0.0348 +/- 0.0074	Mean: 0.1085 +/- 0.0057	Mean: 0.0378 +/- 0.0146
Std Dev: 0.3486 +/- 0.0052	Std Dev: 0.3886 +/- 0.0041	Std Dev: 0.3313 +/- 0.0103



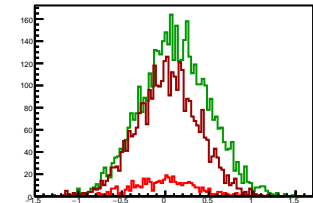
Cycle 12, Diffs

Entries: 502	Entries: 4553	Entries: 495
Mean: -0.0029 +/- 0.0155	Mean: 0.1106 +/- 0.0058	Mean: 0.0097 +/- 0.0161
Std Dev: 0.3471 +/- 0.0110	Std Dev: 0.3921 +/- 0.0041	Std Dev: 0.3581 +/- 0.0114



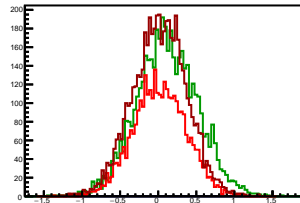
Cycle 13, Diffs

Entries: 489	Entries: 4590	Entries: 3367
Mean: 0.0002 +/- 0.0163	Mean: 0.1115 +/- 0.0058	Mean: 0.0278 +/- 0.0061
Std Dev: 0.3602 +/- 0.0115	Std Dev: 0.3937 +/- 0.0041	Std Dev: 0.3546 +/- 0.0043



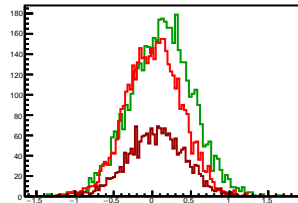
Cycle 14, Diffs

Entries: 3352	Entries: 4626	Entries: 5397
Mean: 0.0196 +/- 0.0060	Mean: 0.1130 +/- 0.0059	Mean: 0.0172 +/- 0.0048
Std Dev: 0.3481 +/- 0.0043	Std Dev: 0.4001 +/- 0.0042	Std Dev: 0.3538 +/- 0.0034



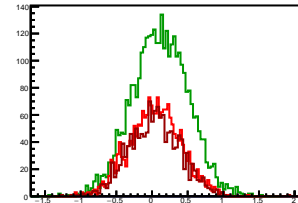
Cycle 15, Diffs

Entries: 4454	Entries: 4652	Entries: 2065
Mean: 0.0208 +/- 0.0054	Mean: 0.1170 +/- 0.0059	Mean: 0.0567 +/- 0.0080
Std Dev: 0.3571 +/- 0.0038	Std Dev: 0.4007 +/- 0.0042	Std Dev: 0.3625 +/- 0.0056



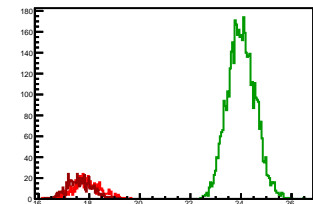
Cycle 16, Diffs

Entries: 2033	Entries: 3490	Entries: 1393
Mean: 0.0405 +/- 0.0081	Mean: 0.1146 +/- 0.0067	Mean: 0.0336 +/- 0.0097
Std Dev: 0.3636 +/- 0.0057	Std Dev: 0.3942 +/- 0.0047	Std Dev: 0.3606 +/- 0.0068



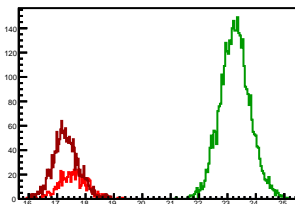
Cycle 1, Sums

Entries: 543	Entries: 4650	Entries: 635
Mean: 17.9197 +/- 0.0233	Mean: 24.0193 +/- 0.0080	Mean: 17.6264 +/- 0.0197
Std Dev: 0.5420 +/- 0.0164	Std Dev: 0.5459 +/- 0.0057	Std Dev: 0.4958 +/- 0.0139



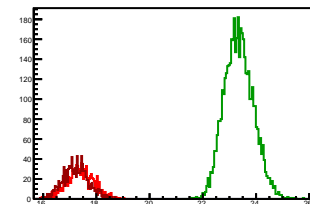
Cycle 2, Sums

Entries: 625	Entries: 3920	Entries: 1718
Mean: 17.5597 +/- 0.0195	Mean: 23.2702 +/- 0.0085	Mean: 17.3139 +/- 0.0112
Std Dev: 0.4865 +/- 0.0138	Std Dev: 0.5313 +/- 0.0060	Std Dev: 0.4629 +/- 0.0079



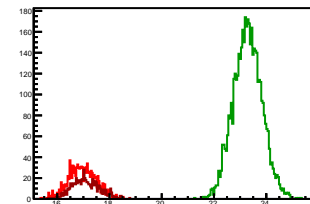
Cycle 3, Sums

Entries: 998	Entries: 4647	Entries: 1159
Mean: 17.4091 +/- 0.0161	Mean: 23.3544 +/- 0.0080	Mean: 17.2302 +/- 0.0139
Std Dev: 0.5053 +/- 0.0114	Std Dev: 0.5454 +/- 0.0057	Std Dev: 0.4724 +/- 0.0098



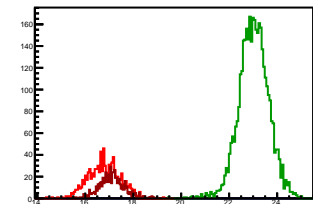
Cycle 4, Sums

Entries: 1100	Entries: 4596	Entries: 658
Mean: 16.9625 +/- 0.0160	Mean: 23.2872 +/- 0.0081	Mean: 17.0945 +/- 0.0201
Std Dev: 0.5320 +/- 0.0113	Std Dev: 0.5472 +/- 0.0057	Std Dev: 0.5168 +/- 0.0142



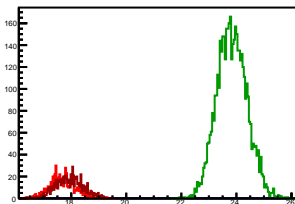
Cycle 5, Sums

Entries: 911	Entries: 3768	Entries: 614
Mean: 16.7843 +/- 0.0217	Mean: 23.0267 +/- 0.0101	Mean: 17.0987 +/- 0.0206
Std Dev: 0.6560 +/- 0.0154	Std Dev: 0.6217 +/- 0.0072	Std Dev: 0.5102 +/- 0.0146



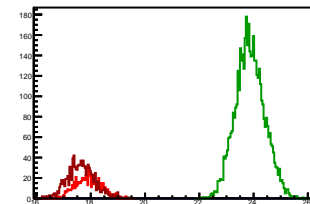
Cycle 6, Sums

Entries: 608	Entries: 4658	Entries: 761
Mean: 17.6868 +/- 0.0191	Mean: 23.8359 +/- 0.0079	Mean: 17.9386 +/- 0.0175
Std Dev: 0.4721 +/- 0.0135	Std Dev: 0.5408 +/- 0.0056	Std Dev: 0.4829 +/- 0.0124



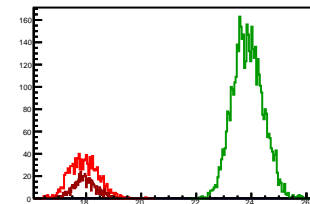
Cycle 7, Sums

Entries: 727	Entries: 4662	Entries: 1103
Mean: 17.8949 +/- 0.0174	Mean: 23.8694 +/- 0.0078	Mean: 17.6438 +/- 0.0150
Std Dev: 0.4697 +/- 0.0123	Std Dev: 0.5327 +/- 0.0055	Std Dev: 0.4988 +/- 0.0106



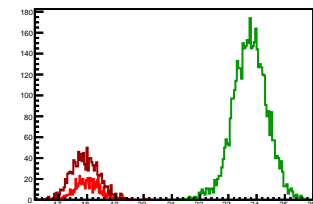
Cycle 8, Sums

Entries: 1063	Entries: 4641	Entries: 700
Mean: 17.9238 +/- 0.0159	Mean: 23.8716 +/- 0.0080	Mean: 17.9548 +/- 0.0152
Std Dev: 0.5187 +/- 0.0112	Std Dev: 0.5441 +/- 0.0056	Std Dev: 0.4032 +/- 0.0108



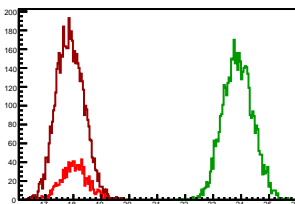
Cycle 9, Sums

Entries: 682	Entries: 4603	Entries: 1203
Mean: 18.0176 +/- 0.0158	Mean: 23.7643 +/- 0.0089	Mean: 17.9401 +/- 0.0142
Std Dev: 0.4119 +/- 0.0112	Std Dev: 0.6043 +/- 0.0063	Std Dev: 0.4931 +/- 0.0101



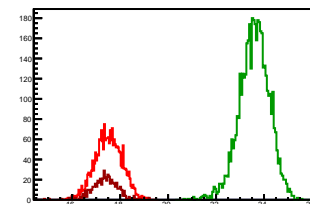
Cycle 10, Sums

Entries: 1157	Entries: 4680	Entries: 5621
Mean: 18.0525 +/- 0.0145	Mean: 23.8816 +/- 0.0078	Mean: 17.8963 +/- 0.0066
Std Dev: 0.4931 +/- 0.0102	Std Dev: 0.5309 +/- 0.0055	Std Dev: 0.4918 +/- 0.0046



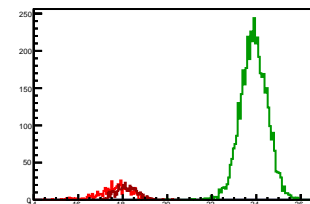
Cycle 11, Sums

Entries: 2236	Entries: 4591	Entries: 515
Mean: 17.5075 +/- 0.0118	Mean: 23.5915 +/- 0.0093	Mean: 17.3797 +/- 0.0231
Std Dev: 0.5595 +/- 0.0084	Std Dev: 0.6307 +/- 0.0066	Std Dev: 0.5238 +/- 0.0163



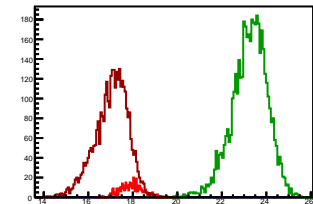
Cycle 12, Sums

Entries: 502	Entries: 4553	Entries: 495
Mean: 17.6177 +/- 0.0331	Mean: 23.8889 +/- 0.0089	Mean: 18.1688 +/- 0.0215
Std Dev: 0.7421 +/- 0.0234	Std Dev: 0.6027 +/- 0.0063	Std Dev: 0.4788 +/- 0.0152



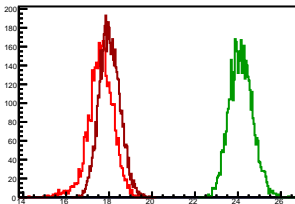
Cycle 13, Sums

Entries: 489	Entries: 4590	Entries: 3367
Mean: 17.9357 +/- 0.0226	Mean: 23.2452 +/- 0.0118	Mean: 17.0377 +/- 0.0128
Std Dev: 0.4987 +/- 0.0159	Std Dev: 0.8004 +/- 0.0084	Std Dev: 0.7399 +/- 0.0090



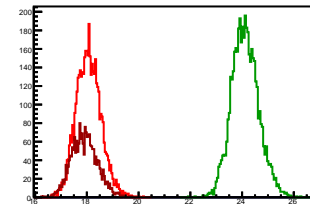
Cycle 14, Sums

Entries: 3352	Entries: 4626	Entries: 5397
Mean: 17.6130 +/- 0.0104	Mean: 24.1421 +/- 0.0079	Mean: 18.0322 +/- 0.0066
Std Dev: 0.5996 +/- 0.0073	Std Dev: 0.5392 +/- 0.0056	Std Dev: 0.4830 +/- 0.0046



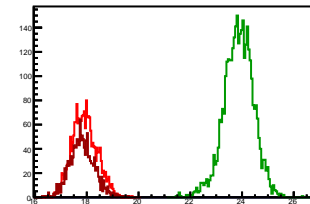
Cycle 15, Sums

Entries: 4454	Entries: 4652	Entries: 2065
Mean: 18.0679 +/- 0.0072	Mean: 24.1183 +/- 0.0077	Mean: 17.9102 +/- 0.0110
Std Dev: 0.4778 +/- 0.0051	Std Dev: 0.5218 +/- 0.0054	Std Dev: 0.5009 +/- 0.0078



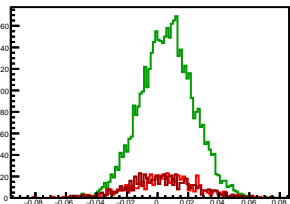
Cycle 16, Sums

Entries: 2033	Entries: 3490	Entries: 1393
Mean: 17.9137 +/- 0.0107	Mean: 23.8678 +/- 0.0097	Mean: 17.8174 +/- 0.0127
Std Dev: 0.4838 +/- 0.0076	Std Dev: 0.5718 +/- 0.0068	Std Dev: 0.4729 +/- 0.0090



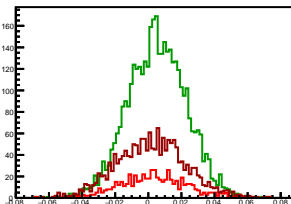
Cycle 1, Asyms

Entries: 543	Entries: 4650	Entries: 635
Mean: 0.0046 +/- 0.0009	Mean: 0.0062 +/- 0.0003	Mean: 0.0023 +/- 0.0009
Std Dev: 0.0215 +/- 0.0007	Std Dev: 0.0174 +/- 0.0002	Std Dev: 0.0222 +/- 0.0006



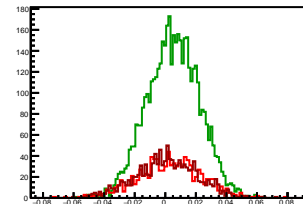
Cycle 2, Asyms

Entries: 625	Entries: 3920	Entries: 1718
Mean: 0.0034 +/- 0.0008	Mean: 0.0052 +/- 0.0003	Mean: 0.0018 +/- 0.0005
Std Dev: 0.0212 +/- 0.0006	Std Dev: 0.0176 +/- 0.0002	Std Dev: 0.0208 +/- 0.0004



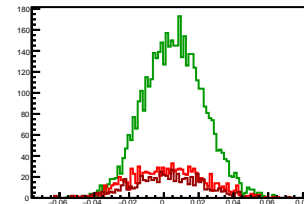
Cycle 3, Asyms

Entries: 998	Entries: 4647	Entries: 1159
Mean: 0.0030 +/- 0.0007	Mean: 0.0051 +/- 0.0003	Mean: 0.0008 +/- 0.0006
Std Dev: 0.0211 +/- 0.0005	Std Dev: 0.0171 +/- 0.0002	Std Dev: 0.0202 +/- 0.0004



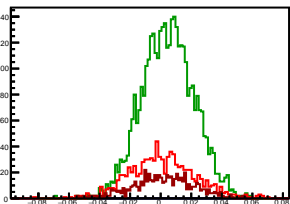
Cycle 4, Asyms

Entries: 1100	Entries: 4596	Entries: 658
Mean: 0.0026 +/- 0.0006	Mean: 0.0058 +/- 0.0003	Mean: 0.0017 +/- 0.0008
Std Dev: 0.0207 +/- 0.0004	Std Dev: 0.0173 +/- 0.0002	Std Dev: 0.0201 +/- 0.0006



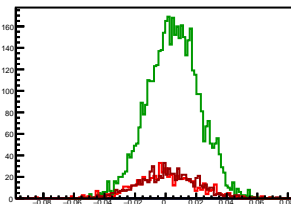
Cycle 5, Asyms

Entries: 911	Entries: 3768	Entries: 614
Mean: 0.0011 +/- 0.0007	Mean: 0.0047 +/- 0.0003	Mean: 0.0018 +/- 0.0008
Std Dev: 0.0217 +/- 0.0005	Std Dev: 0.0172 +/- 0.0002	Std Dev: 0.0198 +/- 0.0006



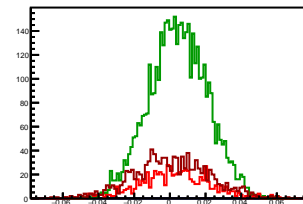
Cycle 6, Asyms

Entries: 608	Entries: 4658	Entries: 761
Mean: 0.0001 +/- 0.0008	Mean: 0.0052 +/- 0.0002	Mean: 0.0017 +/- 0.0007
Std Dev: 0.0206 +/- 0.0006	Std Dev: 0.0169 +/- 0.0002	Std Dev: 0.0192 +/- 0.0005



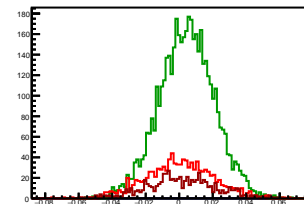
Cycle 7, Asyms

Entries: 727	Entries: 4662	Entries: 1103
Mean: 0.0026 +/- 0.0007	Mean: 0.0046 +/- 0.0002	Mean: 0.0007 +/- 0.0006
Std Dev: 0.0196 +/- 0.0005	Std Dev: 0.0163 +/- 0.0002	Std Dev: 0.0211 +/- 0.0004



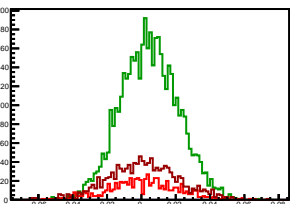
Cycle 8, Asyms

Entries: 1063	Entries: 4641	Entries: 700
Mean: 0.0001 +/- 0.0006	Mean: 0.0043 +/- 0.0002	Mean: 0.0012 +/- 0.0008
Std Dev: 0.0203 +/- 0.0004	Std Dev: 0.0165 +/- 0.0002	Std Dev: 0.0207 +/- 0.0006



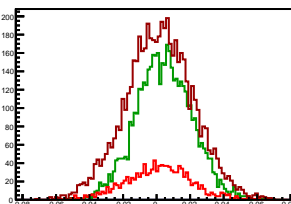
Cycle 9, Asyms

Entries: 682	Entries: 4603	Entries: 1203
Mean: 0.0007 +/- 0.0008	Mean: 0.0046 +/- 0.0002	Mean: 0.0012 +/- 0.0006
Std Dev: 0.0202 +/- 0.0005	Std Dev: 0.0168 +/- 0.0002	Std Dev: 0.0202 +/- 0.0004



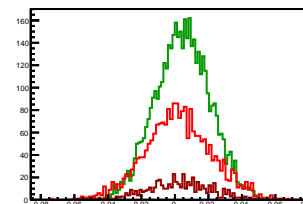
Cycle 10, Asyms

Entries: 1157	Entries: 4680	Entries: 5621
Mean: 0.0014 +/- 0.0006	Mean: 0.0044 +/- 0.0002	Mean: 0.0017 +/- 0.0003
Std Dev: 0.0197 +/- 0.0004	Std Dev: 0.0166 +/- 0.0002	Std Dev: 0.0203 +/- 0.0002



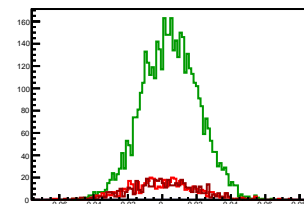
Cycle 11, Asyms

Entries: 2236	Entries: 4591	Entries: 515
Mean: 0.0020 +/- 0.0004	Mean: 0.0046 +/- 0.0002	Mean: 0.0022 +/- 0.0008
Std Dev: 0.0199 +/- 0.0003	Std Dev: 0.0165 +/- 0.0002	Std Dev: 0.0190 +/- 0.0006



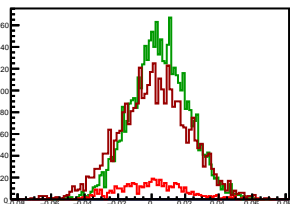
Cycle 12, Asyms

Entries: 502	Entries: 4553	Entries: 495
Mean: -0.0002 +/- 0.0009	Mean: 0.0046 +/- 0.0002	Mean: 0.0006 +/- 0.0009
Std Dev: 0.0198 +/- 0.0006	Std Dev: 0.0164 +/- 0.0002	Std Dev: 0.0196 +/- 0.0006



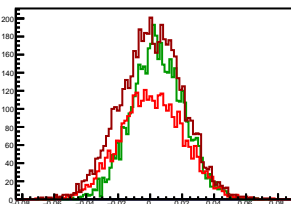
Cycle 13, Asyms

Entries: 489	Entries: 4590	Entries: 3367
Mean: -0.0000 +/- 0.0009	Mean: 0.0048 +/- 0.0003	Mean: 0.0016 +/- 0.0004
Std Dev: 0.0201 +/- 0.0006	Std Dev: 0.0170 +/- 0.0002	Std Dev: 0.0208 +/- 0.0003



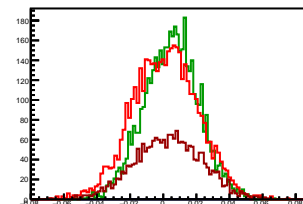
Cycle 14, Asyms

Entries: 3352	Entries: 4626	Entries: 5397
Mean: 0.0011 +/- 0.0003	Mean: 0.0047 +/- 0.0002	Mean: 0.0010 +/- 0.0003
Std Dev: 0.0197 +/- 0.0002	Std Dev: 0.0165 +/- 0.0002	Std Dev: 0.0196 +/- 0.0002



Cycle 15, Asyms

Entries: 4454	Entries: 4652	Entries: 2065
Mean: 0.0012 +/- 0.0003	Mean: 0.0049 +/- 0.0002	Mean: 0.0031 +/- 0.0004
Std Dev: 0.0197 +/- 0.0002	Std Dev: 0.0166 +/- 0.0002	Std Dev: 0.0202 +/- 0.0003



Cycle 16, Asyms

Entries: 2033	Entries: 3490	Entries: 1393
Mean: 0.0023 +/- 0.0004	Mean: 0.0048 +/- 0.0003	Mean: 0.0019 +/- 0.0005
Std Dev: 0.0202 +/- 0.0003	Std Dev: 0.0165 +/- 0.0002	Std Dev: 0.0202 +/- 0.0004

