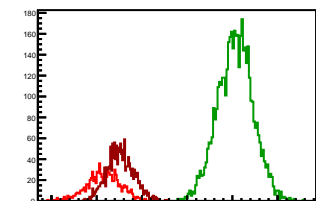


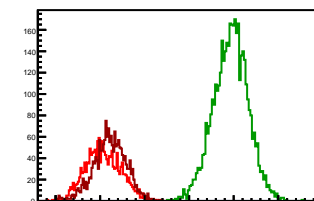
### Cycle 1, PosHel

Entries: 937	Entries: 4651	Entries: 1587
Mean: 8.1483 +/- 0.0120	Mean: 11.0646 +/- 0.0057	Mean: 8.5252 +/- 0.0074
Std Dev: 0.3687 +/- 0.0085	Std Dev: 0.3908 +/- 0.0041	Std Dev: 0.2953 +/- 0.0052



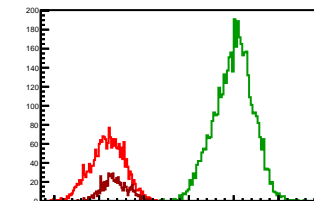
### Cycle 2, PosHel

Entries: 1687	Entries: 4259	Entries: 1861
Mean: 8.0691 +/- 0.0095	Mean: 10.9308 +/- 0.0060	Mean: 8.2170 +/- 0.0084
Std Dev: 0.3913 +/- 0.0067	Std Dev: 0.3905 +/- 0.0042	Std Dev: 0.3632 +/- 0.0060



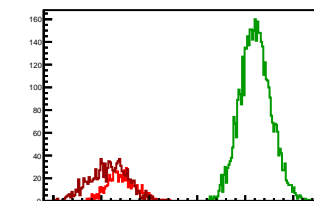
### Cycle 3, PosHel

Entries: 2284	Entries: 4585	Entries: 850
Mean: 8.1861 +/- 0.0079	Mean: 10.9952 +/- 0.0063	Mean: 8.3602 +/- 0.0098
Std Dev: 0.3760 +/- 0.0056	Std Dev: 0.4279 +/- 0.0045	Std Dev: 0.2858 +/- 0.0069



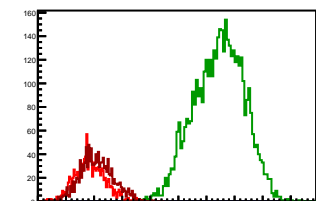
### Cycle 4, PosHel

Entries: 846	Entries: 4666	Entries: 1146
Mean: 8.4239 +/- 0.0103	Mean: 11.2155 +/- 0.0047	Mean: 8.1570 +/- 0.0115
Std Dev: 0.2999 +/- 0.0073	Std Dev: 0.3211 +/- 0.0033	Std Dev: 0.3896 +/- 0.0091



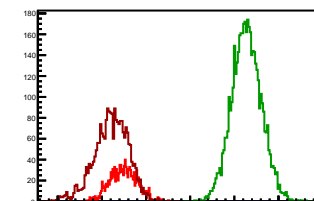
### Cycle 5, PosHel

Entries: 1124	Entries: 4580	Entries: 1259
Mean: 8.4249 +/- 0.0081	Mean: 10.7205 +/- 0.0065	Mean: 8.5495 +/- 0.0081
Std Dev: 0.2707 +/- 0.0057	Std Dev: 0.4431 +/- 0.0046	Std Dev: 0.2885 +/- 0.0058



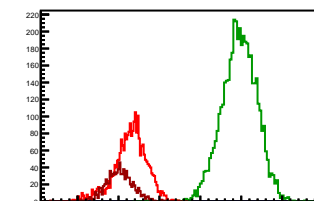
### Cycle 6, PosHel

Entries: 1232	Entries: 4628	Entries: 2428
Mean: 8.4925 +/- 0.0087	Mean: 11.2767 +/- 0.0049	Mean: 8.2115 +/- 0.0078
Std Dev: 0.3042 +/- 0.0061	Std Dev: 0.3344 +/- 0.0035	Std Dev: 0.3848 +/- 0.0055



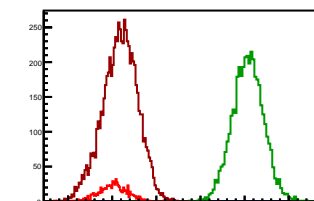
### Cycle 7, PosHel

Entries: 2483	Entries: 4646	Entries: 873
Mean: 8.2889 +/- 0.0080	Mean: 10.9530 +/- 0.0062	Mean: 8.0190 +/- 0.0111
Std Dev: 0.4009 +/- 0.0057	Std Dev: 0.4215 +/- 0.0044	Std Dev: 0.3290 +/- 0.0079



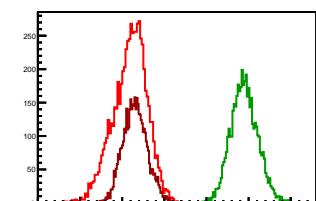
### Cycle 8, PosHel

Entries: 753	Entries: 4041	Entries: 7282
Mean: 8.0248 +/- 0.0113	Mean: 11.0745 +/- 0.0056	Mean: 8.1759 +/- 0.0047
Std Dev: 0.3105 +/- 0.0080	Std Dev: 0.3535 +/- 0.0039	Std Dev: 0.3977 +/- 0.0033



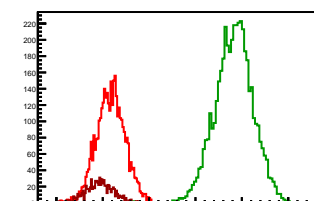
### Cycle 9, PosHel

Entries: 6516	Entries: 4583	Entries: 4343
Mean: 8.1834 +/- 0.0050	Mean: 10.8987 +/- 0.0047	Mean: 8.3065 +/- 0.0044
Std Dev: 0.4052 +/- 0.0035	Std Dev: 0.3196 +/- 0.0033	Std Dev: 0.2889 +/- 0.0031



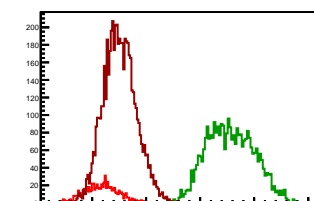
### Cycle 10, PosHel

Entries: 3723	Entries: 4590	Entries: 816
Mean: 8.1719 +/- 0.0051	Mean: 10.8281 +/- 0.0061	Mean: 7.9335 +/- 0.0105
Std Dev: 0.3124 +/- 0.0036	Std Dev: 0.4099 +/- 0.0043	Std Dev: 0.3008 +/- 0.0074



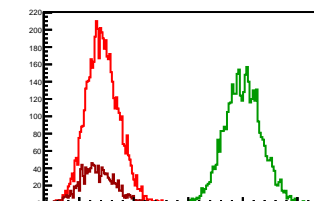
### Cycle 11, PosHel

Entries: 753	Entries: 3180	Entries: 5793
Mean: 8.1658 +/- 0.0113	Mean: 10.5620 +/- 0.0077	Mean: 8.5140 +/- 0.0040
Std Dev: 0.3089 +/- 0.0080	Std Dev: 0.4367 +/- 0.0055	Std Dev: 0.3014 +/- 0.0028



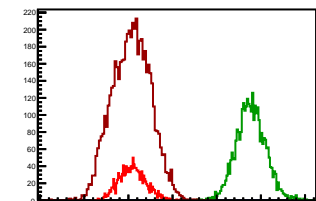
### Cycle 12, PosHel

Entries: 5744	Entries: 4082	Entries: 1345
Mean: 8.4278 +/- 0.0039	Mean: 11.0035 +/- 0.0053	Mean: 8.3388 +/- 0.0062
Std Dev: 0.2958 +/- 0.0028	Std Dev: 0.3375 +/- 0.0037	Std Dev: 0.3021 +/- 0.0058



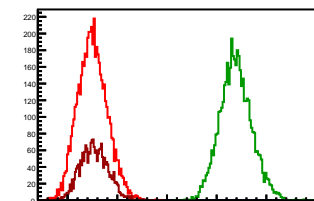
### Cycle 13, PosHel

Entries: 1337	Entries: 3164	Entries: 5695
Mean: 8.0953 +/- 0.0083	Mean: 10.7732 +/- 0.0059	Mean: 8.0663 +/- 0.0057
Std Dev: 0.3022 +/- 0.0058	Std Dev: 0.3311 +/- 0.0042	Std Dev: 0.4292 +/- 0.0040



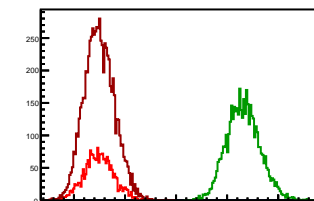
### Cycle 14, PosHel

Entries: 5663	Entries: 4614	Entries: 2179
Mean: 8.5013 +/- 0.0039	Mean: 11.3861 +/- 0.0047	Mean: 8.5352 +/- 0.0059
Std Dev: 0.2959 +/- 0.0028	Std Dev: 0.3169 +/- 0.0033	Std Dev: 0.2769 +/- 0.0042



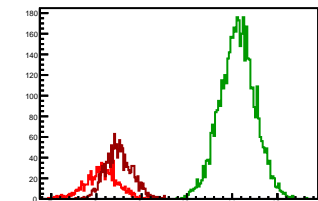
### Cycle 15, PosHel

Entries: 2158	Entries: 4601	Entries: 7410
Mean: 8.4887 +/- 0.0062	Mean: 11.3180 +/- 0.0048	Mean: 8.4967 +/- 0.0034
Std Dev: 0.2897 +/- 0.0044	Std Dev: 0.3255 +/- 0.0034	Std Dev: 0.2951 +/- 0.0024



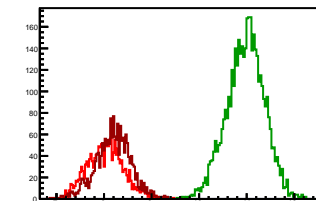
### Cycle 1, NegHel

Entries: 937	Entries: 4651	Entries: 1587
Mean: 8.1137 +/- 0.0119	Mean: 11.1165 +/- 0.0057	Mean: 8.4937 +/- 0.0074
Std Dev: 0.3650 +/- 0.0084	Std Dev: 0.3898 +/- 0.0040	Std Dev: 0.2951 +/- 0.0052



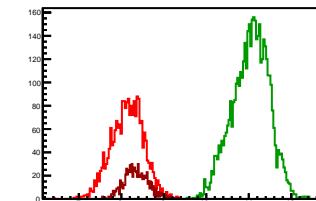
### Cycle 2, NegHel

Entries: 1687	Entries: 4259	Entries: 1961
Mean: 8.0340 +/- 0.0092	Mean: 10.9738 +/- 0.0061	Mean: 8.1893 +/- 0.0086
Std Dev: 0.3791 +/- 0.0065	Std Dev: 0.3963 +/- 0.0043	Std Dev: 0.3699 +/- 0.0061



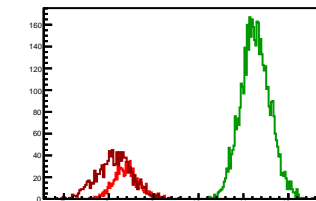
### Cycle 3, NegHel

Entries: 2284	Entries: 4585	Entries: 850
Mean: 8.1447 +/- 0.0079	Mean: 11.0417 +/- 0.0063	Mean: 8.3558 +/- 0.0100
Std Dev: 0.3794 +/- 0.0056	Std Dev: 0.4293 +/- 0.0045	Std Dev: 0.2908 +/- 0.0071



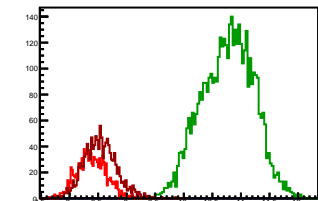
### Cycle 4, NegHel

Entries: 846	Entries: 4666	Entries: 1146
Mean: 8.3929 +/- 0.0099	Mean: 11.2685 +/- 0.0048	Mean: 8.1273 +/- 0.0116
Std Dev: 0.2883 +/- 0.0070	Std Dev: 0.3259 +/- 0.0034	Std Dev: 0.3927 +/- 0.0082



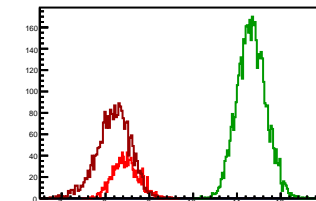
### Cycle 5, NegHel

Entries: 1124	Entries: 4580	Entries: 1259
Mean: 8.3866 +/- 0.0077	Mean: 10.7691 +/- 0.0067	Mean: 8.5371 +/- 0.0080
Std Dev: 0.2584 +/- 0.0054	Std Dev: 0.4509 +/- 0.0047	Std Dev: 0.2837 +/- 0.0057



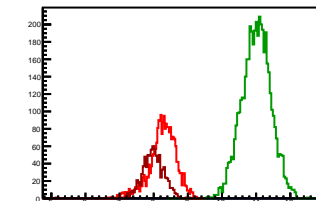
### Cycle 6, NegHel

Entries: 1232	Entries: 4628	Entries: 2428
Mean: 8.4691 +/- 0.0085	Mean: 11.3321 +/- 0.0048	Mean: 8.1840 +/- 0.0078
Std Dev: 0.3000 +/- 0.0060	Std Dev: 0.3274 +/- 0.0034	Std Dev: 0.3842 +/- 0.0055



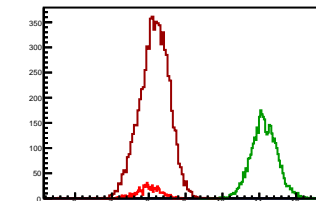
### Cycle 7, NegHel

Entries: 2483	Entries: 4646	Entries: 873
Mean: 8.2598 +/- 0.0080	Mean: 11.0041 +/- 0.0062	Mean: 7.9845 +/- 0.0109
Std Dev: 0.3996 +/- 0.0057	Std Dev: 0.4221 +/- 0.0044	Std Dev: 0.3212 +/- 0.0077



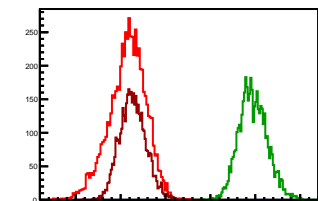
### Cycle 8, NegHel

Entries: 753	Entries: 4041	Entries: 7282
Mean: 7.9995 +/- 0.0116	Mean: 11.1309 +/- 0.0056	Mean: 8.1510 +/- 0.0047
Std Dev: 0.3194 +/- 0.0082	Std Dev: 0.3532 +/- 0.0039	Std Dev: 0.3979 +/- 0.0033



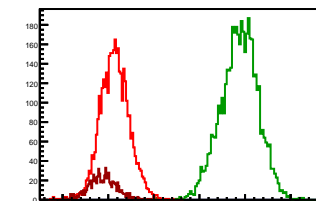
### Cycle 9, NegHel

Entries: 6516	Entries: 4583	Entries: 4343
Mean: 8.1518 +/- 0.0051	Mean: 10.9534 +/- 0.0047	Mean: 8.2717 +/- 0.0044
Std Dev: 0.4094 +/- 0.0036	Std Dev: 0.3171 +/- 0.0033	Std Dev: 0.2915 +/- 0.0031



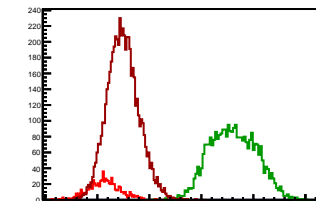
### Cycle 10, NegHel

Entries: 3723	Entries: 4590	Entries: 816
Mean: 8.1415 +/- 0.0052	Mean: 10.8762 +/- 0.0060	Mean: 7.8809 +/- 0.0106
Std Dev: 0.3199 +/- 0.0037	Std Dev: 0.4066 +/- 0.0042	Std Dev: 0.3018 +/- 0.0075



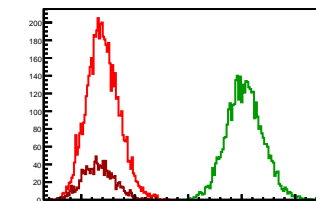
### Cycle 11, NegHel

Entries: 753	Entries: 3180	Entries: 5793
Mean: 8.1349 +/- 0.0109	Mean: 10.6124 +/- 0.0078	Mean: 8.4925 +/- 0.0040
Std Dev: 0.2983 +/- 0.0077	Std Dev: 0.4405 +/- 0.0055	Std Dev: 0.3036 +/- 0.0028



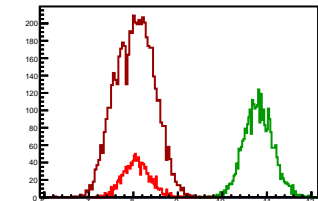
### Cycle 12, NegHel

Entries: 5744	Entries: 4082	Entries: 1345
Mean: 8.4069 +/- 0.0040	Mean: 11.0585 +/- 0.0054	Mean: 8.3253 +/- 0.0081
Std Dev: 0.3018 +/- 0.0028	Std Dev: 0.3428 +/- 0.0038	Std Dev: 0.2968 +/- 0.0057



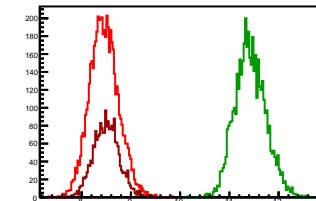
### Cycle 13, NegHel

Entries: 1337	Entries: 3164	Entries: 5695
Mean: 8.0749 +/- 0.0063	Mean: 10.8076 +/- 0.0058	Mean: 8.0368 +/- 0.0057
Std Dev: 0.3035 +/- 0.0059	Std Dev: 0.3265 +/- 0.0041	Std Dev: 0.4314 +/- 0.0040



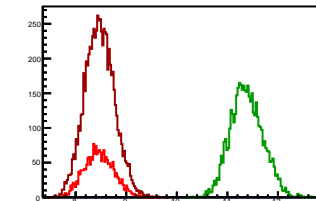
### Cycle 14, NegHel

Entries: 5663	Entries: 4614	Entries: 2179
Mean: 8.4564 +/- 0.0039	Mean: 11.4262 +/- 0.0046	Mean: 8.5022 +/- 0.0056
Std Dev: 0.2941 +/- 0.0028	Std Dev: 0.3114 +/- 0.0032	Std Dev: 0.2601 +/- 0.0039



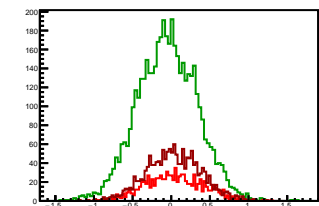
### Cycle 15, NegHel

Entries: 2158	Entries: 4601	Entries: 7410
Mean: 8.4604 +/- 0.0062	Mean: 11.3814 +/- 0.0047	Mean: 8.4726 +/- 0.0034
Std Dev: 0.2901 +/- 0.0044	Std Dev: 0.3185 +/- 0.0033	Std Dev: 0.2924 +/- 0.0024



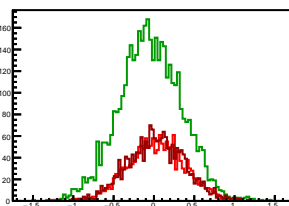
### Cycle 1, Diffs

Entries: 937	Entries: 4651	Entries: 1587
Mean: 0.0346 +/- 0.0120	Mean: -0.0519 +/- 0.0057	Mean: 0.0315 +/- 0.0089
Std Dev: 0.3864 +/- 0.0085	Std Dev: 0.3867 +/- 0.0040	Std Dev: 0.3527 +/- 0.0063



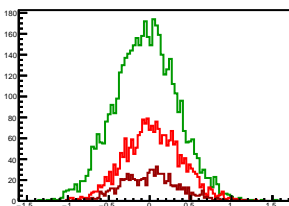
### Cycle 2, Diffs

Entries: 1687	Entries: 4259	Entries: 1861
Mean: 0.0351 +/- 0.0085	Mean: -0.0430 +/- 0.0059	Mean: 0.0278 +/- 0.0081
Std Dev: 0.3491 +/- 0.0060	Std Dev: 0.3857 +/- 0.0042	Std Dev: 0.3504 +/- 0.0057



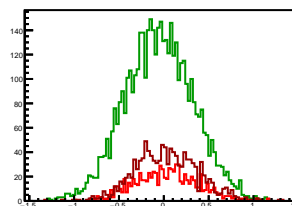
### Cycle 3, Diffs

Entries: 2284	Entries: 4585	Entries: 850
Mean: 0.0414 +/- 0.0073	Mean: -0.0465 +/- 0.0056	Mean: 0.0044 +/- 0.0117
Std Dev: 0.3492 +/- 0.0052	Std Dev: 0.3816 +/- 0.0040	Std Dev: 0.3410 +/- 0.0083



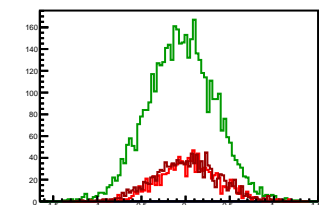
### Cycle 4, Diffs

Entries: 846	Entries: 4666	Entries: 1146
Mean: 0.0310 +/- 0.0121	Mean: -0.0530 +/- 0.0056	Mean: 0.0297 +/- 0.0103
Std Dev: 0.3522 +/- 0.0086	Std Dev: 0.3810 +/- 0.0039	Std Dev: 0.3482 +/- 0.0073



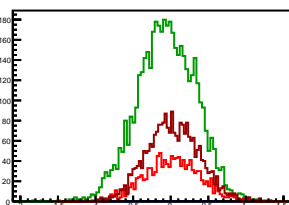
### Cycle 5, Diffs

Entries: 1124	Entries: 4580	Entries: 1259
Mean: 0.0384 +/- 0.0099	Mean: -0.0486 +/- 0.0056	Mean: 0.0125 +/- 0.0102
Std Dev: 0.3333 +/- 0.0070	Std Dev: 0.3789 +/- 0.0040	Std Dev: 0.3619 +/- 0.0072



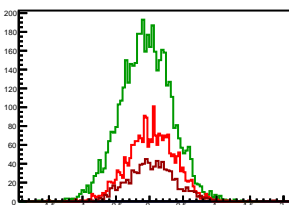
### Cycle 6, Diffs

Entries: 1232	Entries: 4628	Entries: 2428
Mean: 0.0234 +/- 0.0102	Mean: -0.0554 +/- 0.0057	Mean: 0.0275 +/- 0.0071
Std Dev: 0.3578 +/- 0.0072	Std Dev: 0.3882 +/- 0.0040	Std Dev: 0.3504 +/- 0.0050



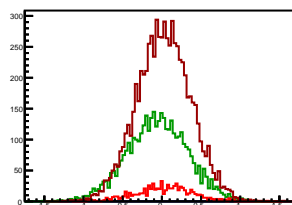
### Cycle 7, Diffs

Entries: 2483	Entries: 4646	Entries: 873
Mean: 0.0292 +/- 0.0069	Mean: -0.0511 +/- 0.0056	Mean: 0.0344 +/- 0.0121
Std Dev: 0.3461 +/- 0.0049	Std Dev: 0.3808 +/- 0.0040	Std Dev: 0.3567 +/- 0.0085



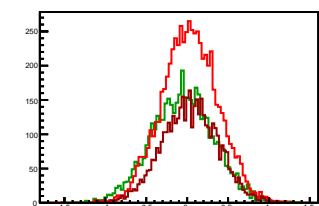
### Cycle 8, Diffs

Entries: 753	Entries: 4041	Entries: 7282
Mean: 0.0253 +/- 0.0129	Mean: -0.0564 +/- 0.0061	Mean: 0.0249 +/- 0.0040
Std Dev: 0.3540 +/- 0.0091	Std Dev: 0.3890 +/- 0.0043	Std Dev: 0.3451 +/- 0.0029



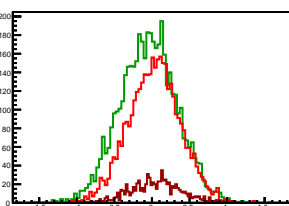
### Cycle 9, Diffs

Entries: 6516	Entries: 4583	Entries: 4343
Mean: 0.0315 +/- 0.0042	Mean: -0.0546 +/- 0.0057	Mean: 0.0348 +/- 0.0052
Std Dev: 0.3422 +/- 0.0030	Std Dev: 0.3833 +/- 0.0040	Std Dev: 0.3409 +/- 0.0037



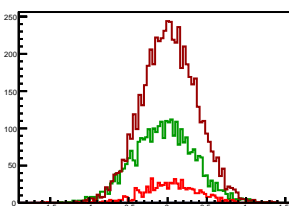
### Cycle 10, Diffs

Entries: 3723	Entries: 4590	Entries: 816
Mean: 0.0304 +/- 0.0057	Mean: -0.0481 +/- 0.0056	Mean: 0.0526 +/- 0.0120
Std Dev: 0.3475 +/- 0.0040	Std Dev: 0.3819 +/- 0.0040	Std Dev: 0.3415 +/- 0.0085



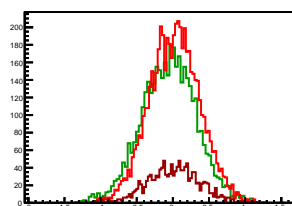
### Cycle 11, Diffs

Entries: 753	Entries: 3180	Entries: 5793
Mean: 0.0310 +/- 0.0128	Mean: -0.0504 +/- 0.0069	Mean: 0.0215 +/- 0.0046
Std Dev: 0.3504 +/- 0.0090	Std Dev: 0.3882 +/- 0.0049	Std Dev: 0.3528 +/- 0.0033



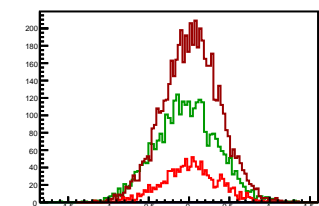
### Cycle 12, Diffs

Entries: 5744	Entries: 4082	Entries: 1345
Mean: 0.0208 +/- 0.0046	Mean: -0.0551 +/- 0.0060	Mean: 0.0135 +/- 0.0098
Std Dev: 0.3493 +/- 0.0033	Std Dev: 0.3834 +/- 0.0042	Std Dev: 0.3585 +/- 0.0069



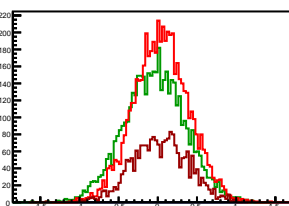
### Cycle 13, Diffs

Entries: 1337	Entries: 3164	Entries: 5695
Mean: 0.0204 +/- 0.0096	Mean: -0.0344 +/- 0.0069	Mean: 0.0294 +/- 0.0046
Std Dev: 0.3500 +/- 0.0068	Std Dev: 0.3853 +/- 0.0048	Std Dev: 0.3492 +/- 0.0033



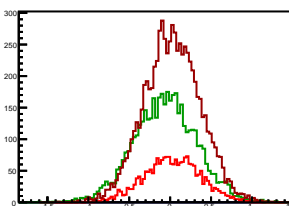
### Cycle 14, Diffs

Entries: 5663	Entries: 4614	Entries: 2179
Mean: 0.0449 +/- 0.0047	Mean: -0.0402 +/- 0.0057	Mean: 0.0330 +/- 0.0076
Std Dev: 0.3505 +/- 0.0033	Std Dev: 0.3888 +/- 0.0040	Std Dev: 0.3566 +/- 0.0054



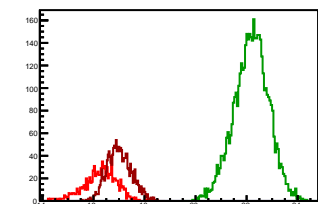
### Cycle 15, Diffs

Entries: 2158	Entries: 4601	Entries: 7410
Mean: 0.0283 +/- 0.0074	Mean: -0.0635 +/- 0.0057	Mean: 0.0242 +/- 0.0040
Std Dev: 0.3429 +/- 0.0052	Std Dev: 0.3840 +/- 0.0040	Std Dev: 0.3444 +/- 0.0028



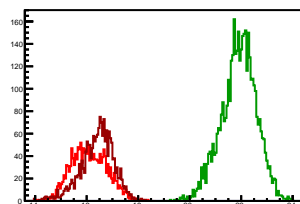
### Cycle 1, Sums

Entries: 937	Entries: 4651	Entries: 1587
Mean: 16.2620 +/- 0.0208	Mean: 22.1811 +/- 0.0099	Mean: 17.0189 +/- 0.0119
Std Dev: 0.6356 +/- 0.0147	Std Dev: 0.6781 +/- 0.0070	Std Dev: 0.4735 +/- 0.0084



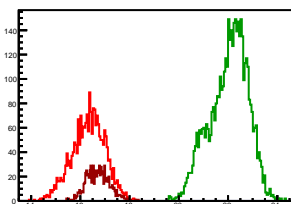
### Cycle 2, Sums

Entries: 1687	Entries: 4259	Entries: 1861
Mean: 16.1031 +/- 0.0167	Mean: 21.9046 +/- 0.0105	Mean: 16.4063 +/- 0.0149
Std Dev: 0.6868 +/- 0.0118	Std Dev: 0.6857 +/- 0.0074	Std Dev: 0.6441 +/- 0.0106



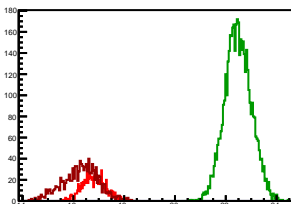
### Cycle 3, Sums

Entries: 2284	Entries: 4585	Entries: 850
Mean: 16.3309 +/- 0.0140	Mean: 22.0369 +/- 0.0113	Mean: 16.7161 +/- 0.0159
Std Dev: 0.6699 +/- 0.0099	Std Dev: 0.7675 +/- 0.0080	Std Dev: 0.4650 +/- 0.0113



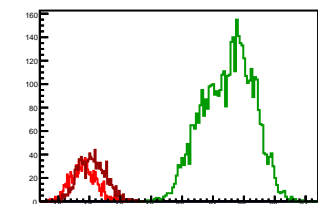
### Cycle 4, Sums

Entries: 846	Entries: 4666	Entries: 1146
Mean: 16.8168 +/- 0.0162	Mean: 22.4839 +/- 0.0077	Mean: 16.2842 +/- 0.0207
Std Dev: 0.4711 +/- 0.0115	Std Dev: 0.5229 +/- 0.0054	Std Dev: 0.7005 +/- 0.0146



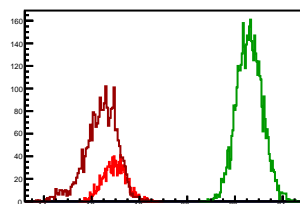
### Cycle 5, Sums

Entries: 1124	Entries: 4580	Entries: 1259
Mean: 16.8115 +/- 0.0123	Mean: 21.4896 +/- 0.0120	Mean: 17.0866 +/- 0.0125
Std Dev: 0.4111 +/- 0.0087	Std Dev: 0.8097 +/- 0.0085	Std Dev: 0.4433 +/- 0.0088



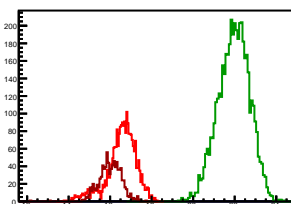
### Cycle 6, Sums

Entries: 1232	Entries: 4628	Entries: 2428
Mean: 16.9616 +/- 0.0139	Mean: 22.6089 +/- 0.0079	Mean: 16.3955 +/- 0.0139
Std Dev: 0.4868 +/- 0.0098	Std Dev: 0.5360 +/- 0.0056	Std Dev: 0.6845 +/- 0.0098



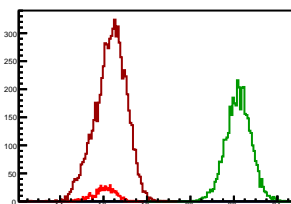
### Cycle 7, Sums

Entries: 2483	Entries: 4646	Entries: 873
Mean: 16.5487 +/- 0.0145	Mean: 21.9570 +/- 0.0110	Mean: 16.0035 +/- 0.0184
Std Dev: 0.7217 +/- 0.0102	Std Dev: 0.7527 +/- 0.0078	Std Dev: 0.5436 +/- 0.0130



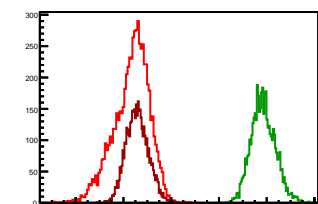
### Cycle 8, Sums

Entries: 753	Entries: 4041	Entries: 7282
Mean: 16.0243 +/- 0.0190	Mean: 22.2055 +/- 0.0093	Mean: 16.3269 +/- 0.0084
Std Dev: 0.5210 +/- 0.0134	Std Dev: 0.5900 +/- 0.0066	Std Dev: 0.7169 +/- 0.0059



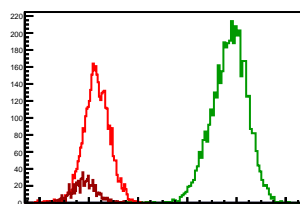
### Cycle 9, Sums

Entries: 6516	Entries: 4583	Entries: 4343
Mean: 16.3352 +/- 0.0092	Mean: 21.8521 +/- 0.0075	Mean: 16.5782 +/- 0.0071
Std Dev: 0.7393 +/- 0.0065	Std Dev: 0.5084 +/- 0.0053	Std Dev: 0.4698 +/- 0.0050



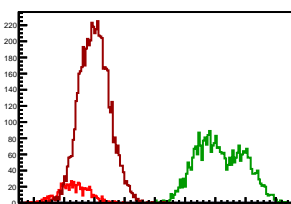
### Cycle 10, Sums

Entries: 3723	Entries: 4590	Entries: 816
Mean: 16.3135 +/- 0.0087	Mean: 21.7042 +/- 0.0107	Mean: 15.8144 +/- 0.0174
Std Dev: 0.5283 +/- 0.0061	Std Dev: 0.7217 +/- 0.0075	Std Dev: 0.4964 +/- 0.0123



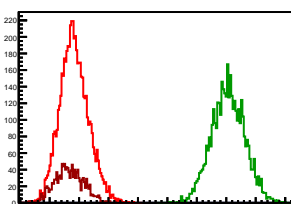
### Cycle 11, Sums

Entries: 753	Entries: 3180	Entries: 5793
Mean: 16.3007 +/- 0.0181	Mean: 21.1744 +/- 0.0140	Mean: 17.0065 +/- 0.0065
Std Dev: 0.4961 +/- 0.0128	Std Dev: 0.7867 +/- 0.0099	Std Dev: 0.4914 +/- 0.0046



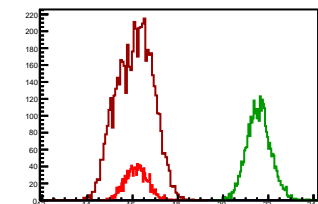
### Cycle 12, Sums

Entries: 5744	Entries: 4082	Entries: 1345
Mean: 16.8347 +/- 0.0064	Mean: 22.0620 +/- 0.0088	Mean: 16.6642 +/- 0.0131
Std Dev: 0.4849 +/- 0.0045	Std Dev: 0.5620 +/- 0.0062	Std Dev: 0.4798 +/- 0.0093



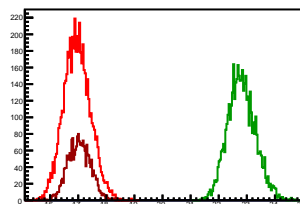
### Cycle 13, Sums

Entries: 1337	Entries: 3164	Entries: 5695
Mean: 16.1702 +/- 0.0135	Mean: 21.5808 +/- 0.0095	Mean: 16.1031 +/- 0.0104
Std Dev: 0.4943 +/- 0.0096	Std Dev: 0.5329 +/- 0.0067	Std Dev: 0.7866 +/- 0.0074



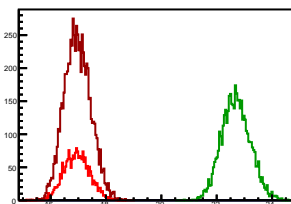
### Cycle 14, Sums

Entries: 5663	Entries: 4614	Entries: 2179
Mean: 16.9577 +/- 0.0063	Mean: 22.8123 +/- 0.0073	Mean: 17.0374 +/- 0.0086
Std Dev: 0.4745 +/- 0.0045	Std Dev: 0.4935 +/- 0.0051	Std Dev: 0.4018 +/- 0.0061



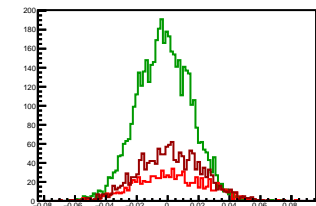
### Cycle 15, Sums

Entries: 2158	Entries: 4601	Entries: 7410
Mean: 16.9490 +/- 0.0101	Mean: 22.6994 +/- 0.0076	Mean: 16.9693 +/- 0.0055
Std Dev: 0.4675 +/- 0.0071	Std Dev: 0.5170 +/- 0.0054	Std Dev: 0.4760 +/- 0.0039



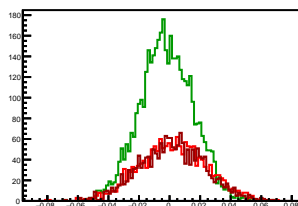
### Cycle 1, Asyms

Entries: 937	Entries: 4651	Entries: 1587
Mean: 0.0021 +/- 0.0007	Mean: -0.0023 +/- 0.0003	Mean: 0.0019 +/- 0.0005
Std Dev: 0.0225 +/- 0.0005	Std Dev: 0.0174 +/- 0.0002	Std Dev: 0.0207 +/- 0.0004



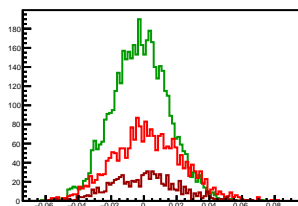
### Cycle 2, Asyms

Entries: 1687	Entries: 4259	Entries: 1861
Mean: 0.0021 +/- 0.0005	Mean: -0.0020 +/- 0.0003	Mean: 0.0017 +/- 0.0005
Std Dev: 0.0216 +/- 0.0004	Std Dev: 0.0176 +/- 0.0002	Std Dev: 0.0212 +/- 0.0003



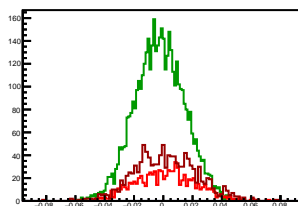
### Cycle 3, Asyms

Entries: 2284	Entries: 4585	Entries: 850
Mean: 0.0025 +/- 0.0004	Mean: -0.0021 +/- 0.0003	Mean: 0.0003 +/- 0.0007
Std Dev: 0.0214 +/- 0.0003	Std Dev: 0.0173 +/- 0.0002	Std Dev: 0.0203 +/- 0.0005



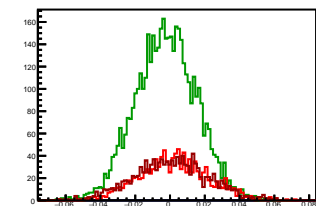
### Cycle 4, Asyms

Entries: 846	Entries: 4666	Entries: 1146
Mean: 0.0018 +/- 0.0007	Mean: -0.0024 +/- 0.0002	Mean: 0.0018 +/- 0.0006
Std Dev: 0.0209 +/- 0.0005	Std Dev: 0.0169 +/- 0.0002	Std Dev: 0.0213 +/- 0.0004



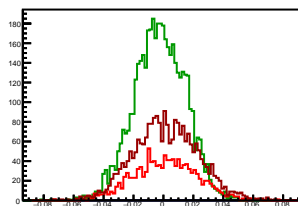
### Cycle 5, Asyms

Entries: 1124	Entries: 4580	Entries: 1259
Mean: 0.0023 +/- 0.0006	Mean: -0.0023 +/- 0.0003	Mean: 0.0007 +/- 0.0006
Std Dev: 0.0198 +/- 0.0004	Std Dev: 0.0177 +/- 0.0002	Std Dev: 0.0211 +/- 0.0004



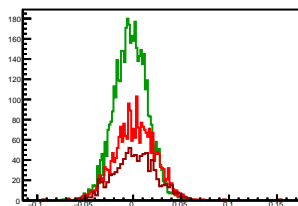
### Cycle 6, Asyms

Entries: 1232	Entries: 4628	Entries: 2428
Mean: 0.0014 +/- 0.0006	Mean: -0.0025 +/- 0.0003	Mean: 0.0017 +/- 0.0004
Std Dev: 0.0210 +/- 0.0004	Std Dev: 0.0172 +/- 0.0002	Std Dev: 0.0214 +/- 0.0004



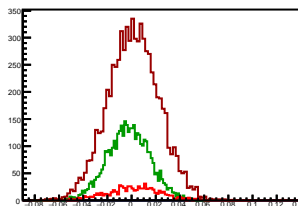
### Cycle 7, Asyms

Entries: 2483	Entries: 4646	Entries: 873
Mean: 0.0018 +/- 0.0004	Mean: -0.0023 +/- 0.0003	Mean: 0.0021 +/- 0.0008
Std Dev: 0.0209 +/- 0.0003	Std Dev: 0.0173 +/- 0.0002	Std Dev: 0.0225 +/- 0.0005



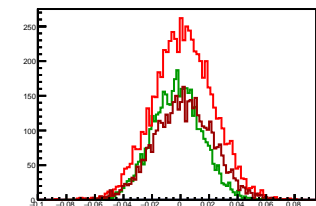
### Cycle 8, Asyms

Entries: 753	Entries: 4041	Entries: 7282
Mean: 0.0016 +/- 0.0008	Mean: -0.0025 +/- 0.0003	Mean: 0.0015 +/- 0.0002
Std Dev: 0.0221 +/- 0.0006	Std Dev: 0.0175 +/- 0.0002	Std Dev: 0.0212 +/- 0.0002



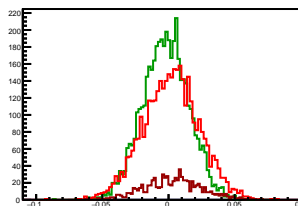
### Cycle 9, Asyms

Entries: 6516	Entries: 4583	Entries: 4343
Mean: 0.0019 +/- 0.0003	Mean: -0.0025 +/- 0.0003	Mean: 0.0021 +/- 0.0003
Std Dev: 0.0209 +/- 0.0002	Std Dev: 0.0175 +/- 0.0002	Std Dev: 0.0205 +/- 0.0002



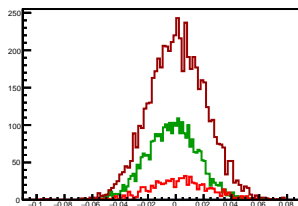
### Cycle 10, Asyms

Entries: 3723	Entries: 4590	Entries: 816
Mean: 0.0019 +/- 0.0003	Mean: -0.0022 +/- 0.0003	Mean: 0.0033 +/- 0.0008
Std Dev: 0.0213 +/- 0.0002	Std Dev: 0.0176 +/- 0.0002	Std Dev: 0.0216 +/- 0.0005



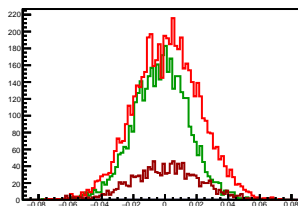
### Cycle 11, Asyms

Entries: 753	Entries: 3180	Entries: 5793
Mean: 0.0019 +/- 0.0008	Mean: -0.0024 +/- 0.0003	Mean: 0.0013 +/- 0.0003
Std Dev: 0.0215 +/- 0.0006	Std Dev: 0.0183 +/- 0.0002	Std Dev: 0.0207 +/- 0.0002



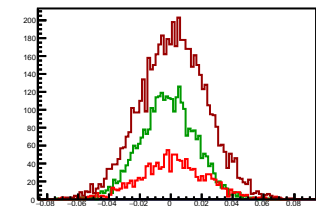
### Cycle 12, Asyms

Entries: 5744	Entries: 4082	Entries: 1345
Mean: 0.0013 +/- 0.0003	Mean: -0.0025 +/- 0.0003	Mean: 0.0008 +/- 0.0006
Std Dev: 0.0207 +/- 0.0002	Std Dev: 0.0173 +/- 0.0002	Std Dev: 0.0214 +/- 0.0004



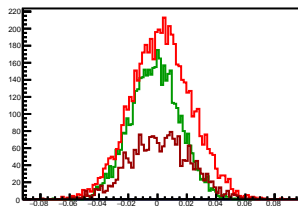
### Cycle 13, Asyms

Entries: 1337	Entries: 3164	Entries: 5695
Mean: 0.0013 +/- 0.0006	Mean: -0.0016 +/- 0.0003	Mean: 0.0018 +/- 0.0003
Std Dev: 0.0216 +/- 0.0004	Std Dev: 0.0179 +/- 0.0002	Std Dev: 0.0217 +/- 0.0002



### Cycle 14, Asyms

Entries: 5663	Entries: 4614	Entries: 2179
Mean: 0.0026 +/- 0.0003	Mean: -0.0018 +/- 0.0003	Mean: 0.0019 +/- 0.0004
Std Dev: 0.0206 +/- 0.0002	Std Dev: 0.0170 +/- 0.0002	Std Dev: 0.0209 +/- 0.0003



### Cycle 15, Asyms

Entries: 2158	Entries: 4601	Entries: 7410
Mean: 0.0017 +/- 0.0004	Mean: -0.0028 +/- 0.0002	Mean: 0.0014 +/- 0.0002
Std Dev: 0.0202 +/- 0.0003	Std Dev: 0.0169 +/- 0.0002	Std Dev: 0.0203 +/- 0.0002

