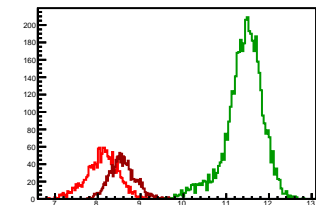


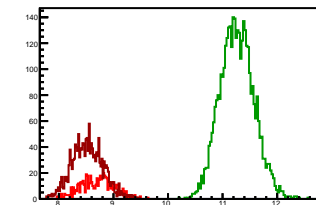
### Cycle 1, PosHel

Entries: 1705	Entries: 4587	Entries: 1500
Mean: 8.1020 +/- 0.0090	Mean: 11.4202 +/- 0.0065	Mean: 8.5784 +/- 0.0077
Std Dev: 0.3729 +/- 0.0064	Std Dev: 0.4419 +/- 0.0046	Std Dev: 0.2967 +/- 0.0054



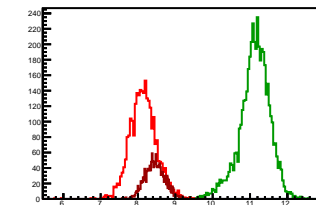
### Cycle 2, PosHel

Entries: 584	Entries: 3847	Entries: 1604
Mean: 8.7048 +/- 0.0124	Mean: 11.2655 +/- 0.0050	Mean: 8.5257 +/- 0.0071
Std Dev: 0.2993 +/- 0.0088	Std Dev: 0.3114 +/- 0.0036	Std Dev: 0.2855 +/- 0.0050



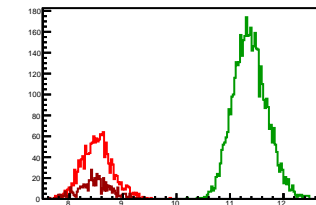
### Cycle 3, PosHel

Entries: 2736	Entries: 4669	Entries: 1568
Mean: 8.1393 +/- 0.0069	Mean: 11.1238 +/- 0.0060	Mean: 8.4508 +/- 0.0066
Std Dev: 0.3606 +/- 0.0049	Std Dev: 0.4066 +/- 0.0042	Std Dev: 0.2632 +/- 0.0047



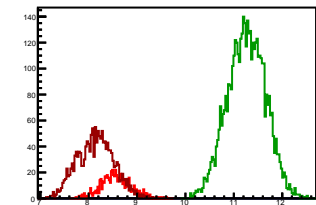
### Cycle 4, PosHel

Entries: 1568	Entries: 4604	Entries: 605
Mean: 8.5221 +/- 0.0073	Mean: 11.3748 +/- 0.0046	Mean: 8.4809 +/- 0.0123
Std Dev: 0.2884 +/- 0.0051	Std Dev: 0.3144 +/- 0.0033	Std Dev: 0.3014 +/- 0.0087



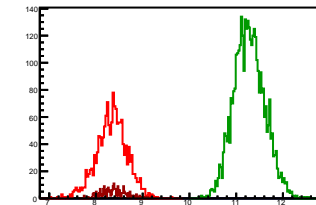
### Cycle 5, PosHel

Entries: 595	Entries: 4665	Entries: 1621
Mean: 8.5576 +/- 0.0125	Mean: 11.2606 +/- 0.0057	Mean: 8.1472 +/- 0.0093
Std Dev: 0.3041 +/- 0.0088	Std Dev: 0.3899 +/- 0.0040	Std Dev: 0.3758 +/- 0.0066



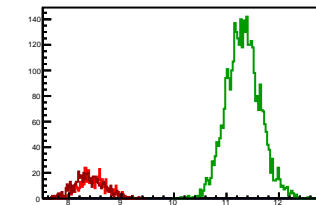
### Cycle 6, PosHel

Entries: 1594	Entries: 3773	Entries: 229
Mean: 8.3387 +/- 0.0082	Mean: 11.2789 +/- 0.0054	Mean: 8.3800 +/- 0.0174
Std Dev: 0.3281 +/- 0.0058	Std Dev: 0.3304 +/- 0.0038	Std Dev: 0.2627 +/- 0.0123



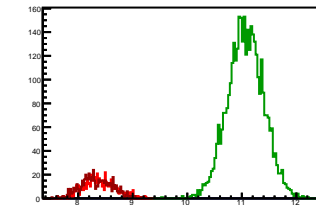
### Cycle 7, PosHel

Entries: 595	Entries: 3678	Entries: 619
Mean: 8.4704 +/- 0.0106	Mean: 11.3194 +/- 0.0053	Mean: 8.3752 +/- 0.0116
Std Dev: 0.2576 +/- 0.0075	Std Dev: 0.3206 +/- 0.0037	Std Dev: 0.2876 +/- 0.0082



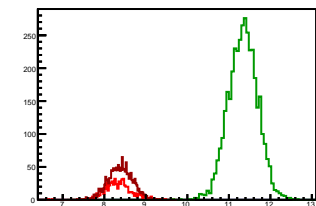
### Cycle 8, PosHel

Entries: 610	Entries: 3754	Entries: 616
Mean: 8.3953 +/- 0.0117	Mean: 11.0690 +/- 0.0054	Mean: 8.3329 +/- 0.0115
Std Dev: 0.2885 +/- 0.0083	Std Dev: 0.3307 +/- 0.0038	Std Dev: 0.2857 +/- 0.0081



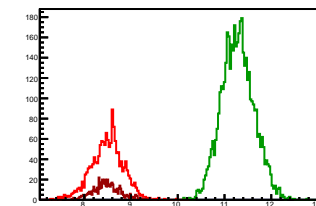
### Cycle 9, PosHel

Entries: 602	Entries: 3820	Entries: 1599
Mean: 8.3449 +/- 0.0131	Mean: 11.3376 +/- 0.0058	Mean: 8.3812 +/- 0.0074
Std Dev: 0.3202 +/- 0.0092	Std Dev: 0.3587 +/- 0.0041	Std Dev: 0.2942 +/- 0.0052



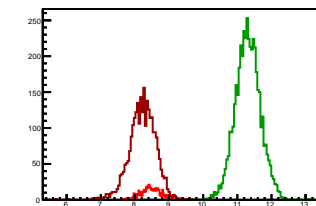
### Cycle 10, PosHel

Entries: 1572	Entries: 4576	Entries: 589
Mean: 8.4947 +/- 0.0087	Mean: 11.2836 +/- 0.0051	Mean: 8.4793 +/- 0.0119
Std Dev: 0.3456 +/- 0.0062	Std Dev: 0.3464 +/- 0.0036	Std Dev: 0.2883 +/- 0.0084



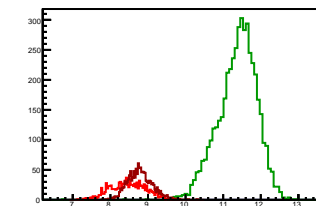
### Cycle 11, PosHel

Entries: 584	Entries: 4581	Entries: 2730
Mean: 8.4743 +/- 0.0120	Mean: 11.3053 +/- 0.0054	Mean: 8.2204 +/- 0.0074
Std Dev: 0.2893 +/- 0.0085	Std Dev: 0.3645 +/- 0.0038	Std Dev: 0.3865 +/- 0.0052



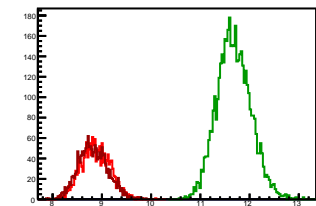
### Cycle 12, PosHel

Entries: 1114	Entries: 4630	Entries: 1325
Mean: 8.4684 +/- 0.0140	Mean: 11.3771 +/- 0.0076	Mean: 8.7851 +/- 0.0089
Std Dev: 0.4669 +/- 0.0099	Std Dev: 0.5158 +/- 0.0054	Std Dev: 0.3253 +/- 0.0063



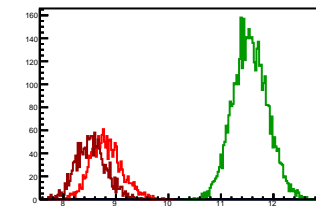
### Cycle 13, PosHel

Entries: 1611	Entries: 4572	Entries: 1679
Mean: 8.8757 +/- 0.0073	Mean: 11.6809 +/- 0.0051	Mean: 8.8220 +/- 0.0073
Std Dev: 0.2916 +/- 0.0051	Std Dev: 0.3453 +/- 0.0036	Std Dev: 0.2986 +/- 0.0052



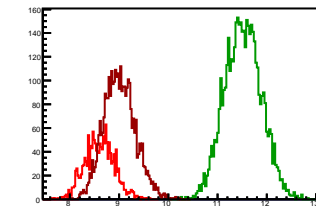
### Cycle 14, PosHel

Entries: 1657	Entries: 4576	Entries: 1594
Mean: 8.8173 +/- 0.0073	Mean: 11.5591 +/- 0.0049	Mean: 8.5328 +/- 0.0072
Std Dev: 0.2952 +/- 0.0051	Std Dev: 0.3286 +/- 0.0034	Std Dev: 0.2870 +/- 0.0051



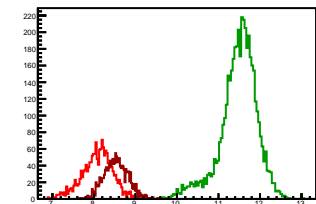
### Cycle 15, PosHel

Entries: 1595	Entries: 4564	Entries: 3271
Mean: 8.6039 +/- 0.0075	Mean: 11.5157 +/- 0.0055	Mean: 9.0099 +/- 0.0056
Std Dev: 0.3013 +/- 0.0053	Std Dev: 0.3715 +/- 0.0039	Std Dev: 0.3210 +/- 0.0040



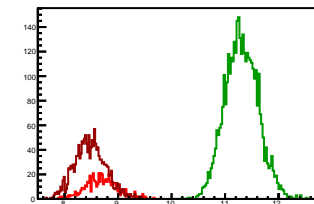
### Cycle 1, NegHel

Entries: 1705	Entries: 4587	Entries: 1500
Mean: 8.0797 +/- 0.0089	Mean: 11.4790 +/- 0.0066	Mean: 8.5353 +/- 0.0075
Std Dev: 0.3682 +/- 0.0063	Std Dev: 0.4500 +/- 0.0047	Std Dev: 0.2892 +/- 0.0053



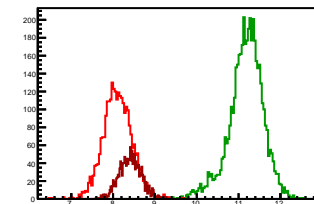
### Cycle 2, NegHel

Entries: 584	Entries: 3847	Entries: 1604
Mean: 8.6925 +/- 0.0125	Mean: 11.3065 +/- 0.0050	Mean: 8.4809 +/- 0.0072
Std Dev: 0.3030 +/- 0.0089	Std Dev: 0.3081 +/- 0.0035	Std Dev: 0.2891 +/- 0.0051



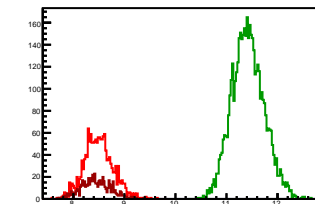
### Cycle 3, NegHel

Entries: 2736	Entries: 4669	Entries: 1568
Mean: 8.1069 +/- 0.0066	Mean: 11.1741 +/- 0.0061	Mean: 8.4124 +/- 0.0066
Std Dev: 0.3454 +/- 0.0047	Std Dev: 0.4140 +/- 0.0043	Std Dev: 0.2617 +/- 0.0047



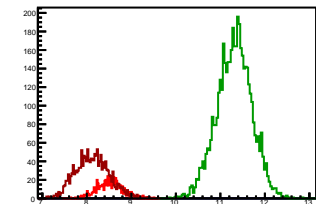
### Cycle 4, NegHel

Entries: 1568	Entries: 4604	Entries: 605
Mean: 8.4944 +/- 0.0071	Mean: 11.4213 +/- 0.0047	Mean: 8.4456 +/- 0.0116
Std Dev: 0.2822 +/- 0.0050	Std Dev: 0.3162 +/- 0.0033	Std Dev: 0.2842 +/- 0.0082



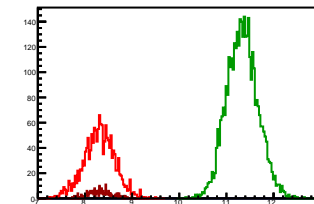
### Cycle 5, NegHel

Entries: 595	Entries: 4665	Entries: 1621
Mean: 8.5196 +/- 0.0119	Mean: 11.3115 +/- 0.0057	Mean: 8.1220 +/- 0.0092
Std Dev: 0.2906 +/- 0.0084	Std Dev: 0.3896 +/- 0.0040	Std Dev: 0.3721 +/- 0.0065



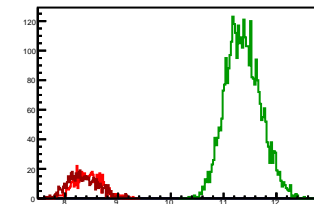
### Cycle 6, NegHel

Entries: 1594	Entries: 3773	Entries: 229
Mean: 8.3000 +/- 0.0083	Mean: 11.3356 +/- 0.0054	Mean: 8.3247 +/- 0.0165
Std Dev: 0.3313 +/- 0.0059	Std Dev: 0.3300 +/- 0.0038	Std Dev: 0.2492 +/- 0.0116



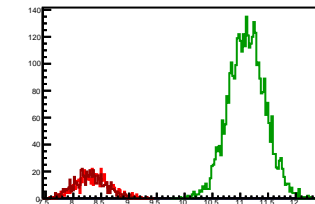
### Cycle 7, NegHel

Entries: 595	Entries: 3678	Entries: 619
Mean: 8.4323 +/- 0.0106	Mean: 11.3695 +/- 0.0055	Mean: 8.3424 +/- 0.0116
Std Dev: 0.2591 +/- 0.0075	Std Dev: 0.3308 +/- 0.0039	Std Dev: 0.2884 +/- 0.0082



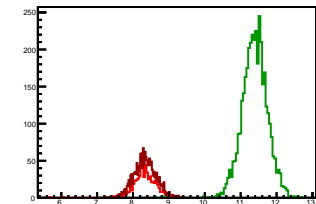
### Cycle 8, NegHel

Entries: 610	Entries: 3754	Entries: 616
Mean: 8.3679 +/- 0.0120	Mean: 11.1170 +/- 0.0054	Mean: 8.3049 +/- 0.0116
Std Dev: 0.2953 +/- 0.0085	Std Dev: 0.3292 +/- 0.0038	Std Dev: 0.2884 +/- 0.0082



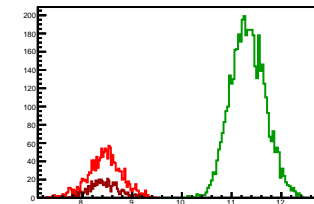
### Cycle 9, NegHel

Entries: 602	Entries: 3820	Entries: 1599
Mean: 8.3288 +/- 0.0133	Mean: 11.3922 +/- 0.0057	Mean: 8.3351 +/- 0.0076
Std Dev: 0.3264 +/- 0.0094	Std Dev: 0.3527 +/- 0.0040	Std Dev: 0.3056 +/- 0.0054



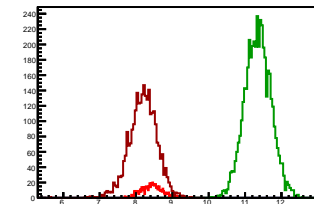
### Cycle 10, NegHel

Entries: 1572	Entries: 4576	Entries: 589
Mean: 8.4443 +/- 0.0086	Mean: 11.3274 +/- 0.0052	Mean: 8.4320 +/- 0.0124
Std Dev: 0.3397 +/- 0.0061	Std Dev: 0.3490 +/- 0.0036	Std Dev: 0.3008 +/- 0.0088



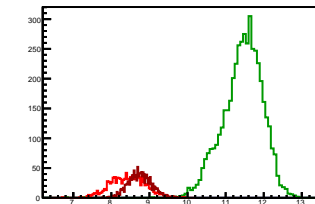
### Cycle 11, NegHel

Entries: 584	Entries: 4581	Entries: 2730
Mean: 8.4431 +/- 0.0117	Mean: 11.3507 +/- 0.0053	Mean: 8.1945 +/- 0.0073
Std Dev: 0.2839 +/- 0.0083	Std Dev: 0.3601 +/- 0.0038	Std Dev: 0.3811 +/- 0.0052



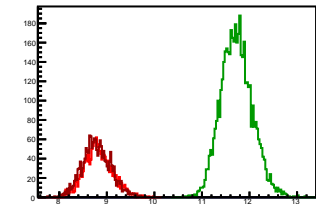
### Cycle 12, NegHel

Entries: 1114	Entries: 4630	Entries: 1325
Mean: 8.4347 +/- 0.0136	Mean: 11.4416 +/- 0.0077	Mean: 8.7499 +/- 0.0083
Std Dev: 0.4528 +/- 0.0096	Std Dev: 0.5243 +/- 0.0054	Std Dev: 0.3037 +/- 0.0059



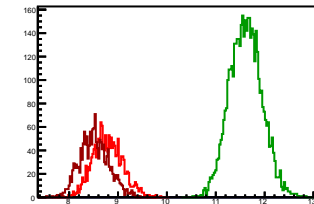
### Cycle 13, NegHel

Entries: 1611	Entries: 4572	Entries: 1679
Mean: 8.8210 +/- 0.0074	Mean: 11.7294 +/- 0.0049	Mean: 8.7844 +/- 0.0072
Std Dev: 0.2970 +/- 0.0052	Std Dev: 0.3322 +/- 0.0035	Std Dev: 0.2969 +/- 0.0051



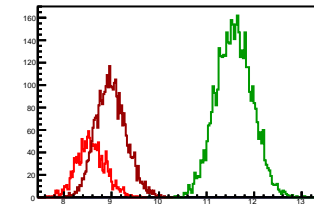
### Cycle 14, NegHel

Entries: 1657	Entries: 4576	Entries: 1594
Mean: 8.7838 +/- 0.0075	Mean: 11.6123 +/- 0.0049	Mean: 8.5205 +/- 0.0075
Std Dev: 0.3033 +/- 0.0053	Std Dev: 0.3296 +/- 0.0034	Std Dev: 0.2976 +/- 0.0053



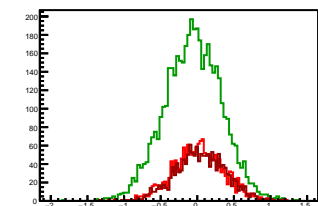
### Cycle 15, NegHel

Entries: 1595	Entries: 4564	Entries: 3271
Mean: 8.5727 +/- 0.0075	Mean: 11.5810 +/- 0.0056	Mean: 8.9921 +/- 0.0056
Std Dev: 0.2995 +/- 0.0053	Std Dev: 0.3792 +/- 0.0040	Std Dev: 0.3179 +/- 0.0039



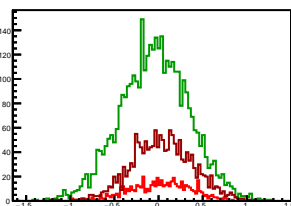
### Cycle 1, Diffs

Entries: 1705	Entries: 4587	Entries: 1500
Mean: 0.0222 +/- 0.0063	Mean: -0.0589 +/- 0.0057	Mean: 0.0431 +/- 0.0090
Std Dev: 0.3427 +/- 0.0059	Std Dev: 0.3892 +/- 0.0041	Std Dev: 0.3471 +/- 0.0063



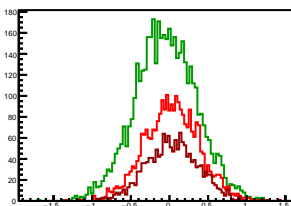
### Cycle 2, Diffs

Entries: 584	Entries: 3847	Entries: 1604
Mean: 0.0124 +/- 0.0147	Mean: -0.0410 +/- 0.0063	Mean: 0.0449 +/- 0.0086
Std Dev: 0.3541 +/- 0.0104	Std Dev: 0.3887 +/- 0.0044	Std Dev: 0.3431 +/- 0.0061



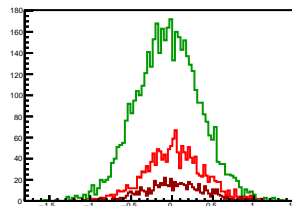
### Cycle 3, Diffs

Entries: 2736	Entries: 4669	Entries: 1568
Mean: 0.0324 +/- 0.0067	Mean: -0.0503 +/- 0.0058	Mean: 0.0384 +/- 0.0086
Std Dev: 0.3508 +/- 0.0047	Std Dev: 0.3966 +/- 0.0041	Std Dev: 0.3411 +/- 0.0061



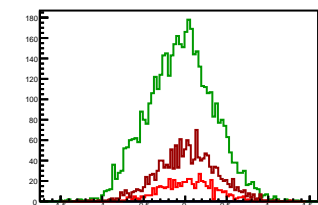
### Cycle 4, Diffs

Entries: 1568	Entries: 4604	Entries: 605
Mean: 0.0277 +/- 0.0088	Mean: -0.0464 +/- 0.0058	Mean: 0.0354 +/- 0.0143
Std Dev: 0.3492 +/- 0.0062	Std Dev: 0.3909 +/- 0.0041	Std Dev: 0.3515 +/- 0.0101



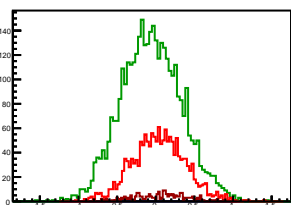
### Cycle 5, Diffs

Entries: 595	Entries: 4665	Entries: 1621
Mean: 0.0380 +/- 0.0138	Mean: -0.0509 +/- 0.0058	Mean: 0.0253 +/- 0.0089
Std Dev: 0.3373 +/- 0.0098	Std Dev: 0.3948 +/- 0.0041	Std Dev: 0.3580 +/- 0.0063



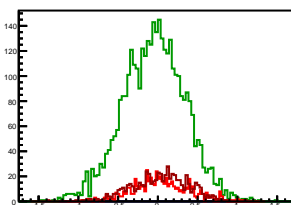
### Cycle 6, Diffs

Entries: 1594	Entries: 3773	Entries: 229
Mean: 0.0387 +/- 0.0086	Mean: -0.0567 +/- 0.0063	Mean: 0.0553 +/- 0.0221
Std Dev: 0.3434 +/- 0.0061	Std Dev: 0.3890 +/- 0.0045	Std Dev: 0.3351 +/- 0.0157



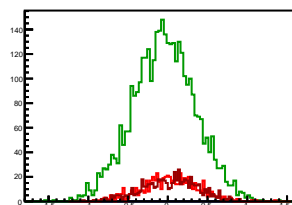
### Cycle 7, Diffs

Entries: 595	Entries: 3678	Entries: 619
Mean: 0.0381 +/- 0.0147	Mean: -0.0501 +/- 0.0064	Mean: 0.0327 +/- 0.0141
Std Dev: 0.3584 +/- 0.0104	Std Dev: 0.3906 +/- 0.0046	Std Dev: 0.3512 +/- 0.0100



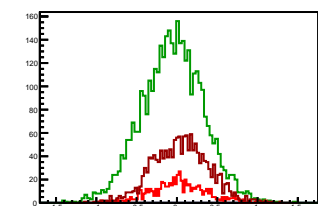
### Cycle 8, Diffs

Entries: 610	Entries: 3754	Entries: 616
Mean: 0.0274 +/- 0.0143	Mean: -0.0480 +/- 0.0064	Mean: 0.0280 +/- 0.0141
Std Dev: 0.3528 +/- 0.0101	Std Dev: 0.3946 +/- 0.0046	Std Dev: 0.3502 +/- 0.0100



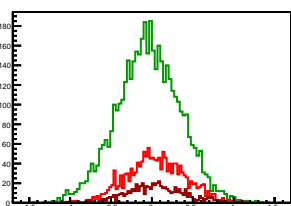
### Cycle 9, Diffs

Entries: 602	Entries: 3820	Entries: 1599
Mean: 0.0160 +/- 0.0143	Mean: -0.0547 +/- 0.0062	Mean: 0.0461 +/- 0.0087
Std Dev: 0.3508 +/- 0.0101	Std Dev: 0.3827 +/- 0.0044	Std Dev: 0.3476 +/- 0.0061



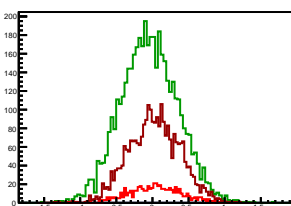
### Cycle 10, Diffs

Entries: 1572	Entries: 4576	Entries: 589
Mean: 0.0504 +/- 0.0090	Mean: -0.0438 +/- 0.0057	Mean: 0.0473 +/- 0.0143
Std Dev: 0.3554 +/- 0.0063	Std Dev: 0.3884 +/- 0.0041	Std Dev: 0.3482 +/- 0.0101



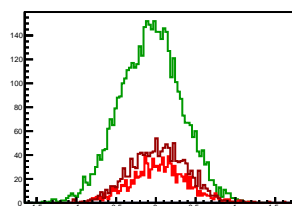
### Cycle 11, Diffs

Entries: 584	Entries: 4581	Entries: 2730
Mean: 0.0311 +/- 0.0149	Mean: -0.0454 +/- 0.0058	Mean: 0.0259 +/- 0.0068
Std Dev: 0.3593 +/- 0.0105	Std Dev: 0.3938 +/- 0.0041	Std Dev: 0.3536 +/- 0.0048



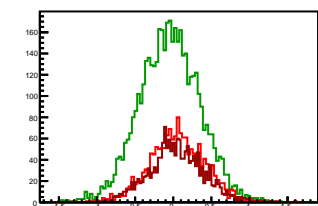
### Cycle 12, Diffs

Entries: 1114	Entries: 4630	Entries: 1325
Mean: 0.0337 +/- 0.0105	Mean: -0.0645 +/- 0.0057	Mean: 0.0352 +/- 0.0098
Std Dev: 0.3492 +/- 0.0074	Std Dev: 0.3868 +/- 0.0040	Std Dev: 0.3550 +/- 0.0069



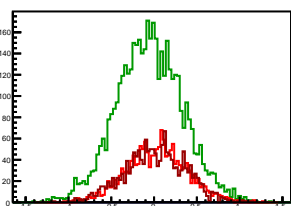
### Cycle 13, Diffs

Entries: 1611	Entries: 4572	Entries: 1679
Mean: 0.0548 +/- 0.0090	Mean: -0.0486 +/- 0.0059	Mean: 0.0376 +/- 0.0086
Std Dev: 0.3624 +/- 0.0064	Std Dev: 0.3977 +/- 0.0042	Std Dev: 0.3538 +/- 0.0061



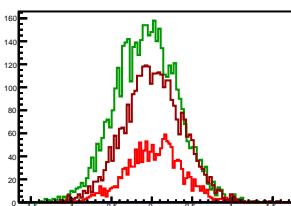
### Cycle 14, Diffs

Entries: 1657	Entries: 4576	Entries: 1594
Mean: 0.0335 +/- 0.0086	Mean: -0.0533 +/- 0.0057	Mean: 0.0123 +/- 0.0089
Std Dev: 0.3484 +/- 0.0061	Std Dev: 0.3859 +/- 0.0040	Std Dev: 0.3539 +/- 0.0063



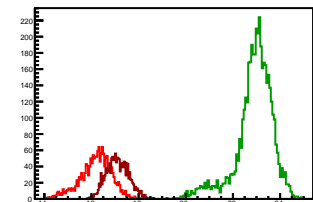
### Cycle 15, Diffs

Entries: 1595	Entries: 4564	Entries: 3271
Mean: 0.0312 +/- 0.0087	Mean: -0.0652 +/- 0.0057	Mean: 0.0178 +/- 0.0064
Std Dev: 0.3491 +/- 0.0062	Std Dev: 0.3846 +/- 0.0040	Std Dev: 0.3671 +/- 0.0045



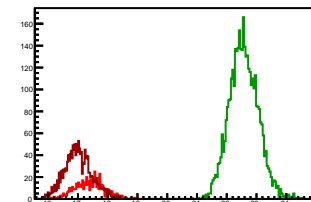
### Cycle 1, Sums

Entries: 1705	Entries: 4587	Entries: 1500
Mean: 16.1817 +/- 0.0159	Mean: 22.8992 +/- 0.0118	Mean: 17.1137 +/- 0.0122
Std Dev: 0.6570 +/- 0.0113	Std Dev: 0.8025 +/- 0.0084	Std Dev: 0.4720 +/- 0.0086



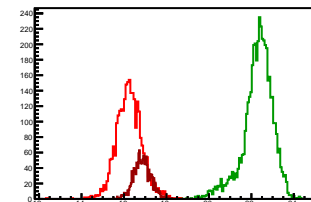
### Cycle 2, Sums

Entries: 584	Entries: 3847	Entries: 1604
Mean: 17.3973 +/- 0.0202	Mean: 22.5720 +/- 0.0078	Mean: 17.0066 +/- 0.0115
Std Dev: 0.4871 +/- 0.0143	Std Dev: 0.4824 +/- 0.0055	Std Dev: 0.4610 +/- 0.0081



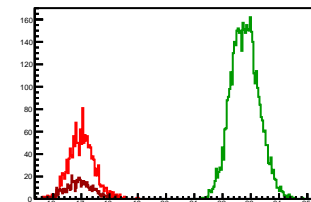
### Cycle 3, Sums

Entries: 2736	Entries: 4669	Entries: 1568
Mean: 16.2463 +/- 0.0117	Mean: 22.2979 +/- 0.0105	Mean: 16.8631 +/- 0.0101
Std Dev: 0.6128 +/- 0.0083	Std Dev: 0.7185 +/- 0.0074	Std Dev: 0.3989 +/- 0.0071



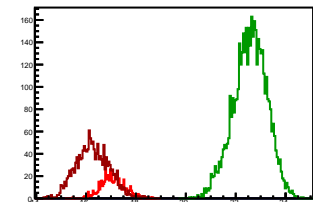
### Cycle 4, Sums

Entries: 1568	Entries: 4604	Entries: 605
Mean: 17.0164 +/- 0.0114	Mean: 22.7961 +/- 0.0073	Mean: 16.9265 +/- 0.0191
Std Dev: 0.4513 +/- 0.0081	Std Dev: 0.4947 +/- 0.0052	Std Dev: 0.4686 +/- 0.0135



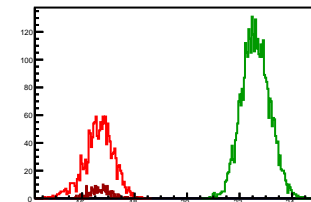
### Cycle 5, Sums

Entries: 595	Entries: 4665	Entries: 1621
Mean: 17.0771 +/- 0.0201	Mean: 22.5722 +/- 0.0098	Mean: 16.2692 +/- 0.0163
Std Dev: 0.4899 +/- 0.0142	Std Dev: 0.6722 +/- 0.0070	Std Dev: 0.6567 +/- 0.0115



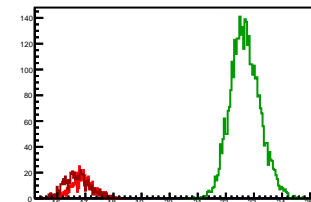
### Cycle 6, Sums

Entries: 1594	Entries: 3773	Entries: 229
Mean: 16.6387 +/- 0.0141	Mean: 22.6145 +/- 0.0087	Mean: 16.7047 +/- 0.0256
Std Dev: 0.5630 +/- 0.0100	Std Dev: 0.5337 +/- 0.0061	Std Dev: 0.3872 +/- 0.0181



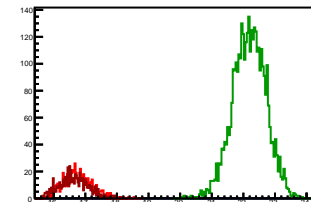
### Cycle 7, Sums

Entries: 595	Entries: 3678	Entries: 619
Mean: 16.9027 +/- 0.0153	Mean: 22.6880 +/- 0.0086	Mean: 16.7176 +/- 0.0183
Std Dev: 0.3723 +/- 0.0108	Std Dev: 0.5214 +/- 0.0061	Std Dev: 0.4565 +/- 0.0130



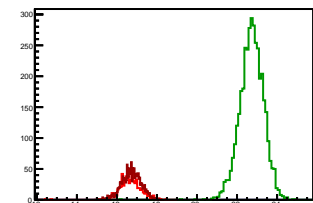
### Cycle 8, Sums

Entries: 610	Entries: 3754	Entries: 616
Mean: 16.7632 +/- 0.0188	Mean: 22.1859 +/- 0.0086	Mean: 16.6377 +/- 0.0183
Std Dev: 0.4652 +/- 0.0133	Std Dev: 0.5289 +/- 0.0061	Std Dev: 0.4550 +/- 0.0130



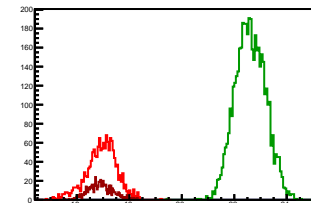
### Cycle 9, Sums

Entries: 602	Entries: 3820	Entries: 1599
Mean: 16.6737 +/- 0.0221	Mean: 22.7290 +/- 0.0097	Mean: 16.7163 +/- 0.0122
Std Dev: 0.5433 +/- 0.0157	Std Dev: 0.5997 +/- 0.0069	Std Dev: 0.4890 +/- 0.0086



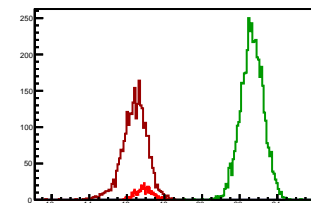
### Cycle 10, Sums

Entries: 1572	Entries: 4576	Entries: 589
Mean: 16.9390 +/- 0.0148	Mean: 22.6109 +/- 0.0085	Mean: 16.9113 +/- 0.0196
Std Dev: 0.5860 +/- 0.0105	Std Dev: 0.5767 +/- 0.0060	Std Dev: 0.4753 +/- 0.0138



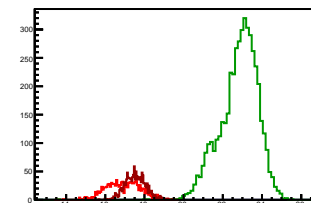
### Cycle 11, Sums

Entries: 584	Entries: 4581	Entries: 2730
Mean: 16.9174 +/- 0.0185	Mean: 22.6561 +/- 0.0090	Mean: 16.4149 +/- 0.0130
Std Dev: 0.4467 +/- 0.0131	Std Dev: 0.6083 +/- 0.0064	Std Dev: 0.6813 +/- 0.0092



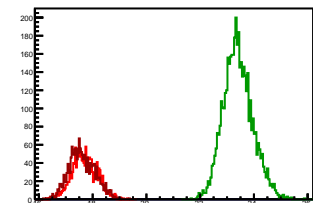
### Cycle 12, Sums

Entries: 1114	Entries: 4630	Entries: 1325
Mean: 16.9031 +/- 0.0255	Mean: 22.8187 +/- 0.0142	Mean: 17.5350 +/- 0.0143
Std Dev: 0.8510 +/- 0.0180	Std Dev: 0.9656 +/- 0.0100	Std Dev: 0.5197 +/- 0.0101



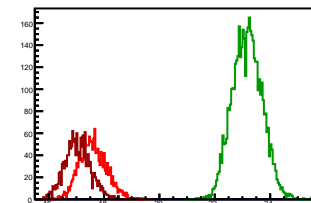
### Cycle 13, Sums

Entries: 1611	Entries: 4572	Entries: 1679
Mean: 17.6967 +/- 0.0116	Mean: 23.4103 +/- 0.0081	Mean: 17.6063 +/- 0.0117
Std Dev: 0.4638 +/- 0.0082	Std Dev: 0.5485 +/- 0.0057	Std Dev: 0.4790 +/- 0.0083



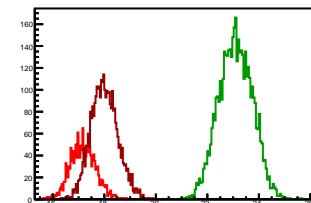
### Cycle 14, Sums

Entries: 1657	Entries: 4576	Entries: 1594
Mean: 17.6011 +/- 0.0120	Mean: 23.1714 +/- 0.0079	Mean: 17.0533 +/- 0.0117
Std Dev: 0.4867 +/- 0.0085	Std Dev: 0.5331 +/- 0.0056	Std Dev: 0.4654 +/- 0.0082



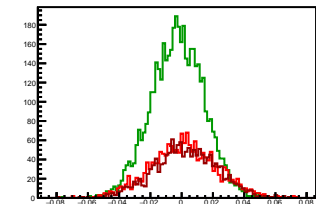
### Cycle 15, Sums

Entries: 1595	Entries: 4564	Entries: 3271
Mean: 17.1766 +/- 0.0122	Mean: 23.0967 +/- 0.0095	Mean: 18.0021 +/- 0.0091
Std Dev: 0.4890 +/- 0.0087	Std Dev: 0.6447 +/- 0.0067	Std Dev: 0.5229 +/- 0.0065



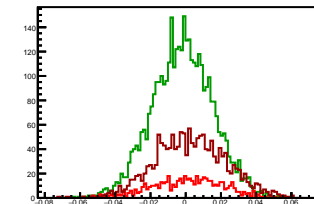
### Cycle 1, Asyms

Entries: 1705	Entries: 4587	Entries: 1500
Mean: 0.0014 +/- 0.0005	Mean: -0.0026 +/- 0.0003	Mean: 0.0025 +/- 0.0005
Std Dev: 0.0212 +/- 0.0004	Std Dev: 0.0170 +/- 0.0002	Std Dev: 0.0202 +/- 0.0004



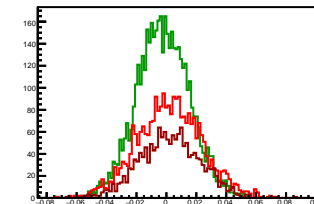
### Cycle 2, Asyms

Entries: 584	Entries: 3847	Entries: 1604
Mean: 0.0007 +/- 0.0008	Mean: -0.0018 +/- 0.0003	Mean: 0.0026 +/- 0.0005
Std Dev: 0.0203 +/- 0.0006	Std Dev: 0.0172 +/- 0.0002	Std Dev: 0.0201 +/- 0.0004



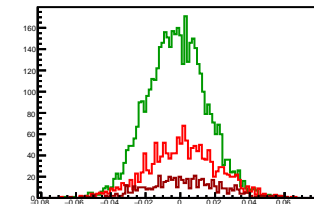
### Cycle 3, Asyms

Entries: 2736	Entries: 4669	Entries: 1568
Mean: 0.0020 +/- 0.0004	Mean: -0.0022 +/- 0.0003	Mean: 0.0023 +/- 0.0005
Std Dev: 0.0216 +/- 0.0003	Std Dev: 0.0178 +/- 0.0002	Std Dev: 0.0202 +/- 0.0004



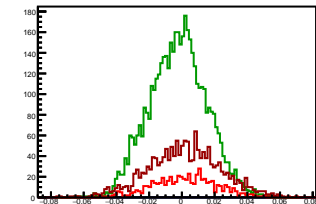
### Cycle 4, Asyms

Entries: 1568	Entries: 4604	Entries: 605
Mean: 0.0016 +/- 0.0005	Mean: -0.0020 +/- 0.0003	Mean: 0.0021 +/- 0.0008
Std Dev: 0.0205 +/- 0.0004	Std Dev: 0.0171 +/- 0.0002	Std Dev: 0.0207 +/- 0.0006



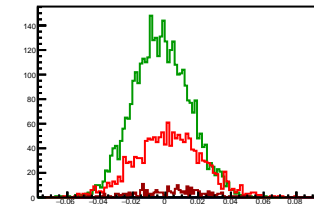
### Cycle 5, Asyms

Entries: 595	Entries: 4665	Entries: 1621
Mean: 0.0022 +/- 0.0008	Mean: -0.0023 +/- 0.0003	Mean: 0.0015 +/- 0.0005
Std Dev: 0.0197 +/- 0.0006	Std Dev: 0.0175 +/- 0.0002	Std Dev: 0.0220 +/- 0.0004



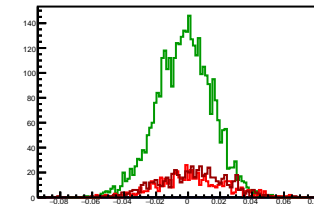
### Cycle 6, Asyms

Entries: 1594	Entries: 3773	Entries: 229
Mean: 0.0023 +/- 0.0005	Mean: -0.0025 +/- 0.0003	Mean: 0.0033 +/- 0.0013
Std Dev: 0.0206 +/- 0.0004	Std Dev: 0.0172 +/- 0.0002	Std Dev: 0.0200 +/- 0.0009



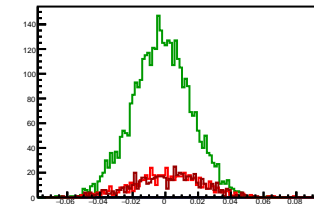
### Cycle 7, Asyms

Entries: 595	Entries: 3678	Entries: 619
Mean: 0.0023 +/- 0.0009	Mean: -0.0022 +/- 0.0003	Mean: 0.0020 +/- 0.0008
Std Dev: 0.0212 +/- 0.0006	Std Dev: 0.0172 +/- 0.0002	Std Dev: 0.0210 +/- 0.0006



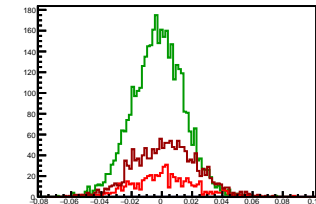
### Cycle 8, Asyms

Entries: 610	Entries: 3754	Entries: 616
Mean: 0.0016 +/- 0.0009	Mean: -0.0022 +/- 0.0003	Mean: 0.0017 +/- 0.0008
Std Dev: 0.0210 +/- 0.0006	Std Dev: 0.0178 +/- 0.0002	Std Dev: 0.0210 +/- 0.0006



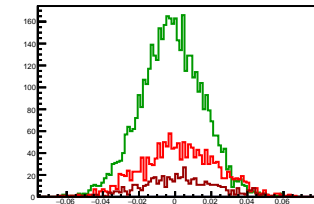
### Cycle 9, Asyms

Entries: 602	Entries: 3820	Entries: 1599
Mean: 0.0010 +/- 0.0009	Mean: -0.0024 +/- 0.0003	Mean: 0.0028 +/- 0.0005
Std Dev: 0.0212 +/- 0.0006	Std Dev: 0.0169 +/- 0.0002	Std Dev: 0.0207 +/- 0.0004



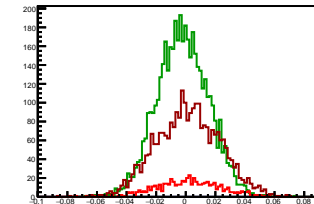
### Cycle 10, Asyms

Entries: 1572	Entries: 4576	Entries: 589
Mean: 0.0030 +/- 0.0005	Mean: -0.0019 +/- 0.0003	Mean: 0.0028 +/- 0.0008
Std Dev: 0.0209 +/- 0.0004	Std Dev: 0.0171 +/- 0.0002	Std Dev: 0.0206 +/- 0.0006



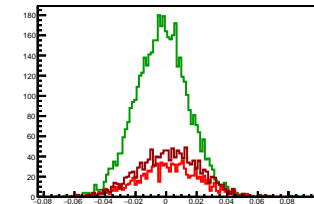
### Cycle 11, Asyms

Entries: 584	Entries: 4581	Entries: 2730
Mean: 0.0018 +/- 0.0009	Mean: -0.0020 +/- 0.0003	Mean: 0.0016 +/- 0.0004
Std Dev: 0.0212 +/- 0.0006	Std Dev: 0.0174 +/- 0.0002	Std Dev: 0.0216 +/- 0.0003



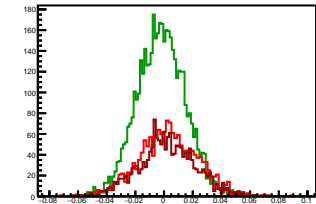
### Cycle 12, Asyms

Entries: 1114	Entries: 4630	Entries: 1325
Mean: 0.0019 +/- 0.0006	Mean: -0.0028 +/- 0.0002	Mean: 0.0020 +/- 0.0006
Std Dev: 0.0206 +/- 0.0004	Std Dev: 0.0170 +/- 0.0002	Std Dev: 0.0202 +/- 0.0004



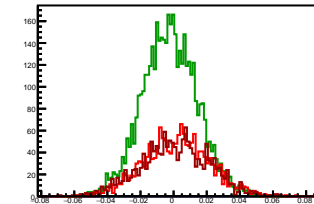
### Cycle 13, Asyms

Entries: 1611	Entries: 4572	Entries: 1679
Mean: 0.0031 +/- 0.0005	Mean: -0.0021 +/- 0.0003	Mean: 0.0021 +/- 0.0005
Std Dev: 0.0204 +/- 0.0004	Std Dev: 0.0170 +/- 0.0002	Std Dev: 0.0200 +/- 0.0003



### Cycle 14, Asyms

Entries: 1657	Entries: 4576	Entries: 1594
Mean: 0.0019 +/- 0.0005	Mean: -0.0023 +/- 0.0002	Mean: 0.0007 +/- 0.0005
Std Dev: 0.0197 +/- 0.0003	Std Dev: 0.0166 +/- 0.0002	Std Dev: 0.0207 +/- 0.0004



### Cycle 15, Asyms

Entries: 1595	Entries: 4564	Entries: 3271
Mean: 0.0018 +/- 0.0005	Mean: -0.0028 +/- 0.0002	Mean: 0.0010 +/- 0.0004
Std Dev: 0.0203 +/- 0.0004	Std Dev: 0.0166 +/- 0.0002	Std Dev: 0.0203 +/- 0.0003

