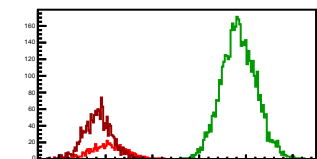
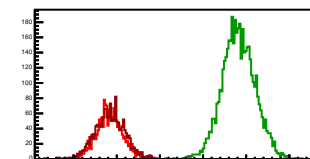


Cycle 1, PosHel

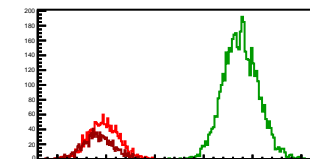
Entries: 564	Entries: 4644	Entries: 1601
Mean: 9.0374 +/- 0.0165	Mean: 11.8475 +/- 0.0054	Mean: 8.8375 +/- 0.0075
Std Dev: 0.3923 +/- 0.0117	Std Dev: 0.3694 +/- 0.0038	Std Dev: 0.2982 +/- 0.0053

**Cycle 2, PosHel**

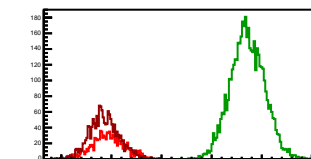
Entries: 1600	Entries: 4603	Entries: 1693
Mean: 8.8297 +/- 0.0077	Mean: 11.8257 +/- 0.0056	Mean: 8.8406 +/- 0.0083
Std Dev: 0.3073 +/- 0.0054	Std Dev: 0.3814 +/- 0.0040	Std Dev: 0.3434 +/- 0.0059

**Cycle 3, PosHel**

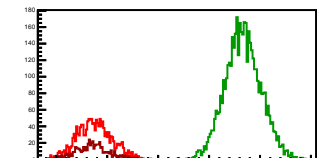
Entries: 1666	Entries: 4604	Entries: 1077
Mean: 8.9480 +/- 0.0076	Mean: 11.7558 +/- 0.0052	Mean: 8.8379 +/- 0.0092
Std Dev: 0.3117 +/- 0.0054	Std Dev: 0.3535 +/- 0.0037	Std Dev: 0.3028 +/- 0.0065

**Cycle 4, PosHel**

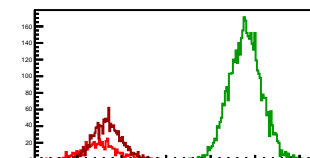
Entries: 1069	Entries: 4700	Entries: 1591
Mean: 8.9363 +/- 0.0099	Mean: 11.7135 +/- 0.0049	Mean: 8.8598 +/- 0.0074
Std Dev: 0.3228 +/- 0.0070	Std Dev: 0.3365 +/- 0.0035	Std Dev: 0.2947 +/- 0.0052

**Cycle 5, PosHel**

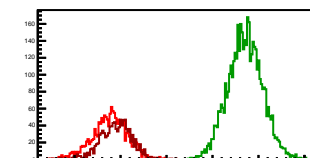
Entries: 1591	Entries: 4636	Entries: 596
Mean: 8.7488 +/- 0.0086	Mean: 11.6654 +/- 0.0052	Mean: 8.7114 +/- 0.0133
Std Dev: 0.3430 +/- 0.0061	Std Dev: 0.3508 +/- 0.0036	Std Dev: 0.3245 +/- 0.0094

**Cycle 6, PosHel**

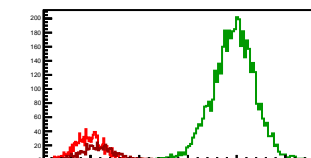
Entries: 588	Entries: 4569	Entries: 1564
Mean: 8.5086 +/- 0.0156	Mean: 11.7807 +/- 0.0053	Mean: 8.6809 +/- 0.0078
Std Dev: 0.3781 +/- 0.0110	Std Dev: 0.3554 +/- 0.0037	Std Dev: 0.3068 +/- 0.0055

**Cycle 7, PosHel**

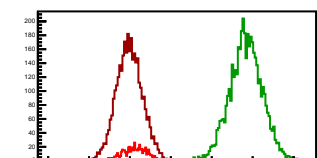
Entries: 1574	Entries: 4604	Entries: 1085
Mean: 8.7649 +/- 0.0097	Mean: 11.7089 +/- 0.0056	Mean: 8.8976 +/- 0.0106
Std Dev: 0.3835 +/- 0.0068	Std Dev: 0.3769 +/- 0.0039	Std Dev: 0.3498 +/- 0.0075

**Cycle 8, PosHel**

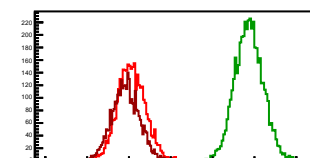
Entries: 1080	Entries: 4675	Entries: 595
Mean: 8.9776 +/- 0.0087	Mean: 11.9350 +/- 0.0062	Mean: 8.1664 +/- 0.0133
Std Dev: 0.2848 +/- 0.0061	Std Dev: 0.4257 +/- 0.0044	Std Dev: 0.3243 +/- 0.0094

**Cycle 9, PosHel**

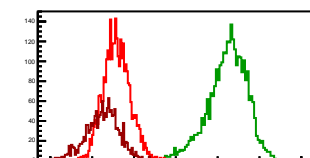
Entries: 584	Entries: 4572	Entries: 3419
Mean: 9.1342 +/- 0.0130	Mean: 11.8341 +/- 0.0059	Mean: 8.9849 +/- 0.0056
Std Dev: 0.3135 +/- 0.0092	Std Dev: 0.4009 +/- 0.0042	Std Dev: 0.3276 +/- 0.0040

**Cycle 10, PosHel**

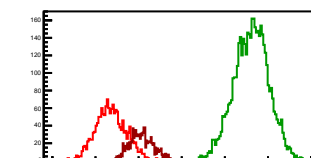
Entries: 3341	Entries: 4677	Entries: 3264
Mean: 9.0618 +/- 0.0058	Mean: 11.8692 +/- 0.0050	Mean: 8.9207 +/- 0.0058
Std Dev: 0.3347 +/- 0.0041	Std Dev: 0.3405 +/- 0.0035	Std Dev: 0.3332 +/- 0.0041

**Cycle 11, PosHel**

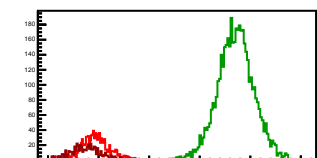
Entries: 3177	Entries: 2964	Entries: 1653
Mean: 8.5866 +/- 0.0057	Mean: 11.2341 +/- 0.0086	Mean: 8.2468 +/- 0.0099
Std Dev: 0.3213 +/- 0.0040	Std Dev: 0.4709 +/- 0.0061	Std Dev: 0.4010 +/- 0.0070

**Cycle 12, PosHel**

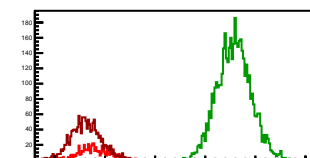
Entries: 1630	Entries: 4597	Entries: 1030
Mean: 8.3538 +/- 0.0088	Mean: 11.6102 +/- 0.0060	Mean: 9.0647 +/- 0.0089
Std Dev: 0.3564 +/- 0.0062	Std Dev: 0.4075 +/- 0.0042	Std Dev: 0.2851 +/- 0.0063

**Cycle 13, PosHel**

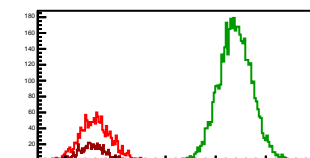
Entries: 1026	Entries: 4600	Entries: 567
Mean: 8.4949 +/- 0.0085	Mean: 11.7106 +/- 0.0053	Mean: 8.7473 +/- 0.0127
Std Dev: 0.2729 +/- 0.0060	Std Dev: 0.3589 +/- 0.0037	Std Dev: 0.3016 +/- 0.0090

**Cycle 14, PosHel**

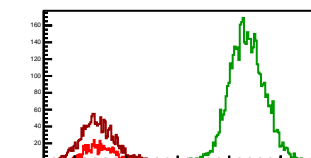
Entries: 566	Entries: 4627	Entries: 1592
Mean: 8.7881 +/- 0.0128	Mean: 11.5440 +/- 0.0050	Mean: 8.6245 +/- 0.0076
Std Dev: 0.3044 +/- 0.0090	Std Dev: 0.3370 +/- 0.0035	Std Dev: 0.3018 +/- 0.0053

**Cycle 15, PosHel**

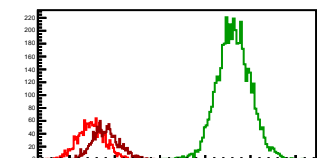
Entries: 1601	Entries: 4625	Entries: 589
Mean: 8.6054 +/- 0.0076	Mean: 11.3929 +/- 0.0048	Mean: 8.5331 +/- 0.0105
Std Dev: 0.3049 +/- 0.0054	Std Dev: 0.3256 +/- 0.0034	Std Dev: 0.2540 +/- 0.0074

**Cycle 16, PosHel**

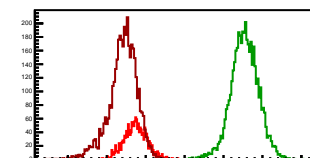
Entries: 581	Entries: 4581	Entries: 1658
Mean: 8.4898 +/- 0.0106	Mean: 11.3498 +/- 0.0048	Mean: 8.4411 +/- 0.0075
Std Dev: 0.2554 +/- 0.0075	Std Dev: 0.3263 +/- 0.0034	Std Dev: 0.3037 +/- 0.0053

**Cycle 17, PosHel**

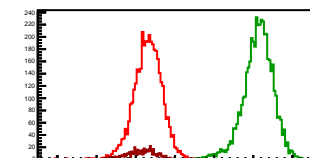
Entries: 1640	Entries: 4672	Entries: 1591
Mean: 8.4894 +/- 0.0075	Mean: 11.6296 +/- 0.0055	Mean: 8.8069 +/- 0.0073
Std Dev: 0.3026 +/- 0.0053	Std Dev: 0.3740 +/- 0.0039	Std Dev: 0.2923 +/- 0.0052

**Cycle 18, PosHel**

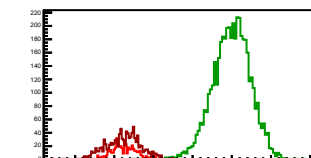
Entries: 1591	Entries: 4570	Entries: 4043
Mean: 8.7442 +/- 0.0075	Mean: 11.5440 +/- 0.0053	Mean: 8.4147 +/- 0.0059
Std Dev: 0.2989 +/- 0.0053	Std Dev: 0.3578 +/- 0.0037	Std Dev: 0.3732 +/- 0.0042

**Cycle 19, PosHel**

Entries: 3941	Entries: 4648	Entries: 520
Mean: 8.3049 +/- 0.0059	Mean: 11.1246 +/- 0.0057	Mean: 8.1260 +/- 0.0170
Std Dev: 0.3694 +/- 0.0042	Std Dev: 0.3864 +/- 0.0040	Std Dev: 0.3870 +/- 0.0120

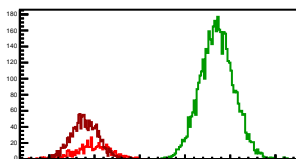
**Cycle 20, PosHel**

Entries: 496	Entries: 4652	Entries: 1097
Mean: 8.2491 +/- 0.0146	Mean: 10.9093 +/- 0.0071	Mean: 8.2369 +/- 0.0133
Std Dev: 0.3256 +/- 0.0103	Std Dev: 0.4862 +/- 0.0050	Std Dev: 0.4408 +/- 0.0094

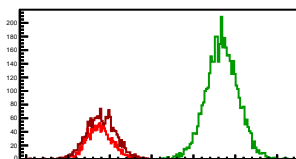


Cycle 1, NegHel

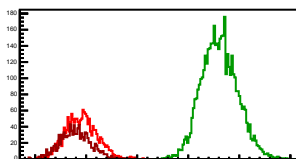
Entries: 564	Entries: 4644	Entries: 1601
Mean: 8.9695 \pm 0.0164	Mean: 11.7102 \pm 0.0055	Mean: 8.7832 \pm 0.0075
Std Dev: 0.3906 \pm 0.0116	Std Dev: 0.3747 \pm 0.0039	Std Dev: 0.2993 \pm 0.0053

**Cycle 2, NegHel**

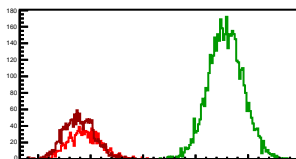
Entries: 1600	Entries: 4603	Entries: 1693
Mean: 8.7514 \pm 0.0076	Mean: 11.6846 \pm 0.0056	Mean: 8.7931 \pm 0.0084
Std Dev: 0.3030 \pm 0.0054	Std Dev: 0.3827 \pm 0.0040	Std Dev: 0.3443 \pm 0.0059

**Cycle 3, NegHel**

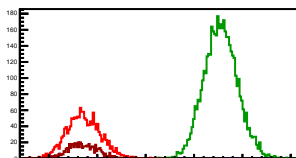
Entries: 1666	Entries: 4604	Entries: 1077
Mean: 8.9064 \pm 0.0076	Mean: 11.6130 \pm 0.0052	Mean: 8.7937 \pm 0.0092
Std Dev: 0.3087 \pm 0.0053	Std Dev: 0.3512 \pm 0.0037	Std Dev: 0.3035 \pm 0.0065

**Cycle 4, NegHel**

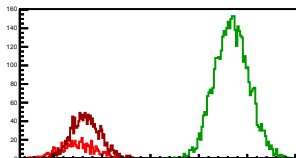
Entries: 1069	Entries: 4700	Entries: 1591
Mean: 8.8913 \pm 0.0095	Mean: 11.5737 \pm 0.0048	Mean: 8.7855 \pm 0.0073
Std Dev: 0.3098 \pm 0.0067	Std Dev: 0.3322 \pm 0.0034	Std Dev: 0.2907 \pm 0.0052

**Cycle 5, NegHel**

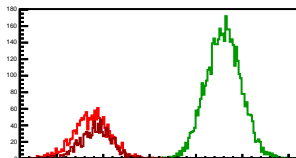
Entries: 1591	Entries: 4636	Entries: 596
Mean: 8.7210 \pm 0.0086	Mean: 11.5521 \pm 0.0050	Mean: 8.7073 \pm 0.0125
Std Dev: 0.3429 \pm 0.0061	Std Dev: 0.3431 \pm 0.0036	Std Dev: 0.3048 \pm 0.0088

**Cycle 6, NegHel**

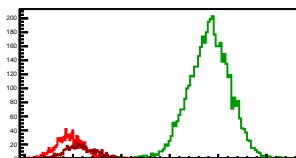
Entries: 588	Entries: 4669	Entries: 1564
Mean: 8.4941 \pm 0.0151	Mean: 11.6809 \pm 0.0052	Mean: 8.6663 \pm 0.0075
Std Dev: 0.3664 \pm 0.0107	Std Dev: 0.3509 \pm 0.0037	Std Dev: 0.2958 \pm 0.0053

**Cycle 7, NegHel**

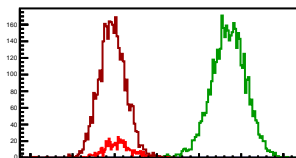
Entries: 1574	Entries: 4604	Entries: 1085
Mean: 8.7382 \pm 0.0097	Mean: 11.5931 \pm 0.0055	Mean: 8.8361 \pm 0.0105
Std Dev: 0.3843 \pm 0.0068	Std Dev: 0.3751 \pm 0.0039	Std Dev: 0.3453 \pm 0.0074

**Cycle 8, NegHel**

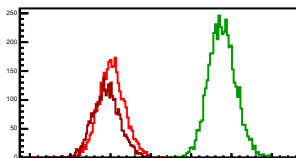
Entries: 1080	Entries: 4675	Entries: 595
Mean: 8.9332 \pm 0.0084	Mean: 11.8173 \pm 0.0062	Mean: 8.1584 \pm 0.0128
Std Dev: 0.2769 \pm 0.0060	Std Dev: 0.4240 \pm 0.0044	Std Dev: 0.3113 \pm 0.0090

**Cycle 9, NegHel**

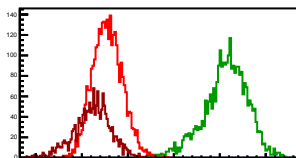
Entries: 594	Entries: 4572	Entries: 3419
Mean: 9.0865 \pm 0.0134	Mean: 11.7020 \pm 0.0061	Mean: 8.9447 \pm 0.0055
Std Dev: 0.3230 \pm 0.0095	Std Dev: 0.4110 \pm 0.0043	Std Dev: 0.3209 \pm 0.0039

**Cycle 10, NegHel**

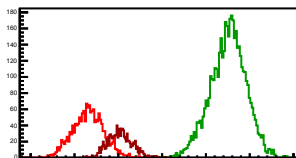
Entries: 3341	Entries: 4677	Entries: 3264
Mean: 9.0281 \pm 0.0057	Mean: 11.7679 \pm 0.0050	Mean: 8.8939 \pm 0.0059
Std Dev: 0.3298 \pm 0.0040	Std Dev: 0.3431 \pm 0.0035	Std Dev: 0.3383 \pm 0.0042

**Cycle 11, NegHel**

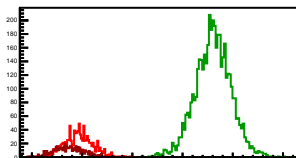
Entries: 3177	Entries: 2964	Entries: 1653
Mean: 8.5573 \pm 0.0057	Mean: 11.1294 \pm 0.0088	Mean: 8.2255 \pm 0.0098
Std Dev: 0.3230 \pm 0.0041	Std Dev: 0.4778 \pm 0.0062	Std Dev: 0.3974 \pm 0.0069

**Cycle 12, NegHel**

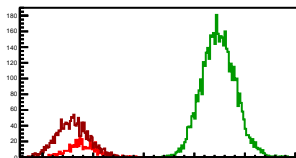
Entries: 1630	Entries: 4697	Entries: 1030
Mean: 8.3162 \pm 0.0088	Mean: 11.5071 \pm 0.0060	Mean: 9.0413 \pm 0.0086
Std Dev: 0.3572 \pm 0.0063	Std Dev: 0.4048 \pm 0.0042	Std Dev: 0.2768 \pm 0.0061

**Cycle 13, NegHel**

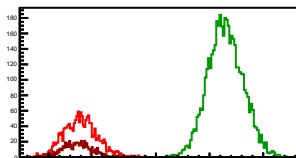
Entries: 1026	Entries: 4600	Entries: 567
Mean: 8.4706 \pm 0.0075	Mean: 11.5105 \pm 0.0052	Mean: 8.7644 \pm 0.0123
Std Dev: 0.2800 \pm 0.0062	Std Dev: 0.3558 \pm 0.0037	Std Dev: 0.2921 \pm 0.0087

**Cycle 14, NegHel**

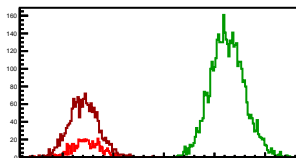
Entries: 566	Entries: 4627	Entries: 1592
Mean: 8.7660 \pm 0.0119	Mean: 11.4775 \pm 0.0049	Mean: 8.5952 \pm 0.0079
Std Dev: 0.2827 \pm 0.0084	Std Dev: 0.3299 \pm 0.0034	Std Dev: 0.3132 \pm 0.0056

**Cycle 15, NegHel**

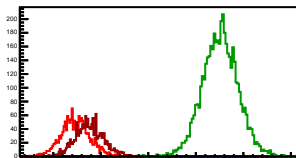
Entries: 1601	Entries: 4625	Entries: 589
Mean: 8.2825 \pm 0.0077	Mean: 11.2964 \pm 0.0048	Mean: 8.5330 \pm 0.0109
Std Dev: 0.3084 \pm 0.0055	Std Dev: 0.3261 \pm 0.0034	Std Dev: 0.2655 \pm 0.0077

**Cycle 16, NegHel**

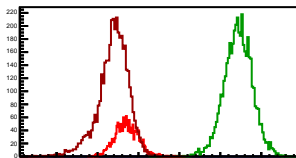
Entries: 581	Entries: 4681	Entries: 1658
Mean: 8.4655 \pm 0.0111	Mean: 11.2572 \pm 0.0050	Mean: 8.4155 \pm 0.0073
Std Dev: 0.2688 \pm 0.0079	Std Dev: 0.3355 \pm 0.0035	Std Dev: 0.2957 \pm 0.0051

**Cycle 17, NegHel**

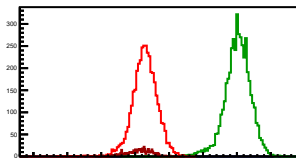
Entries: 1640	Entries: 4672	Entries: 1591
Mean: 8.4706 \pm 0.0075	Mean: 11.5105 \pm 0.0052	Mean: 8.7644 \pm 0.0074
Std Dev: 0.3052 \pm 0.0053	Std Dev: 0.3764 \pm 0.0039	Std Dev: 0.2971 \pm 0.0053

**Cycle 18, NegHel**

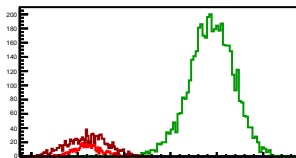
Entries: 1591	Entries: 4670	Entries: 4043
Mean: 8.7142 \pm 0.0073	Mean: 11.4367 \pm 0.0051	Mean: 8.3833 \pm 0.0059
Std Dev: 0.2895 \pm 0.0051	Std Dev: 0.3461 \pm 0.0036	Std Dev: 0.3756 \pm 0.0042

**Cycle 19, NegHel**

Entries: 3941	Entries: 4648	Entries: 520
Mean: 8.2825 \pm 0.0059	Mean: 11.0178 \pm 0.0057	Mean: 8.1049 \pm 0.0164
Std Dev: 0.3724 \pm 0.0042	Std Dev: 0.3872 \pm 0.0040	Std Dev: 0.3737 \pm 0.0116

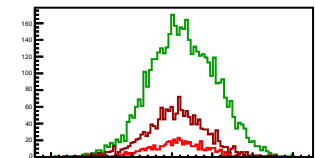
**Cycle 20, NegHel**

Entries: 496	Entries: 4652	Entries: 1097
Mean: 8.2310 \pm 0.0135	Mean: 10.8770 \pm 0.0072	Mean: 8.2011 \pm 0.0132
Std Dev: 0.3016 \pm 0.0096	Std Dev: 0.4893 \pm 0.0051	Std Dev: 0.4373 \pm 0.0093



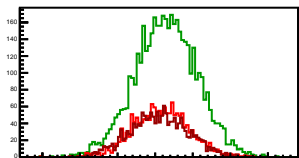
Cycle 1, Diffs

Entries: 564	Entries: 4644	Entries: 1601
Mean: 0.0679 +/- 0.0151	Mean: 0.1373 +/- 0.0061	Mean: 0.0544 +/- 0.0094
Std Dev: 0.3591 +/- 0.0107	Std Dev: 0.4130 +/- 0.0043	Std Dev: 0.3766 +/- 0.0067



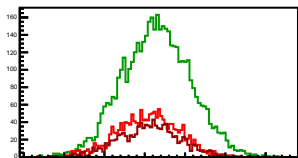
Cycle 2, Diffs

Entries: 1600	Entries: 4603	Entries: 1693
Mean: 0.0783 +/- 0.0094	Mean: 0.1411 +/- 0.0061	Mean: 0.0475 +/- 0.0092
Std Dev: 0.3746 +/- 0.0066	Std Dev: 0.4117 +/- 0.0043	Std Dev: 0.3768 +/- 0.0065



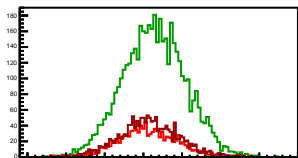
Cycle 3, Diffs

Entries: 1666	Entries: 4604	Entries: 1077
Mean: 0.0416 +/- 0.0092	Mean: 0.1428 +/- 0.0062	Mean: 0.0442 +/- 0.0114
Std Dev: 0.3771 +/- 0.0065	Std Dev: 0.4212 +/- 0.0044	Std Dev: 0.3746 +/- 0.0081



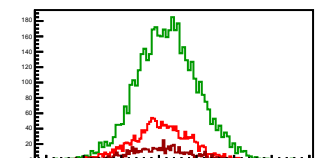
Cycle 4, Diffs

Entries: 1069	Entries: 4700	Entries: 1591
Mean: 0.0451 +/- 0.0117	Mean: 0.1397 +/- 0.0059	Mean: 0.0743 +/- 0.0095
Std Dev: 0.3831 +/- 0.0083	Std Dev: 0.4064 +/- 0.0042	Std Dev: 0.3804 +/- 0.0067



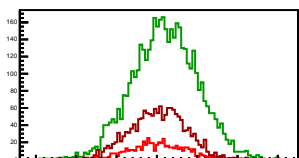
Cycle 5, Diffs

Entries: 1591	Entries: 4636	Entries: 596
Mean: 0.0278 +/- 0.0091	Mean: 0.1132 +/- 0.0059	Mean: 0.0041 +/- 0.0151
Std Dev: 0.3613 +/- 0.0064	Std Dev: 0.4003 +/- 0.0042	Std Dev: 0.3679 +/- 0.0107



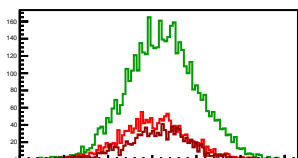
Cycle 6, Diffs

Entries: 588	Entries: 4659	Entries: 1564
Mean: 0.0145 +/- 0.0140	Mean: 0.0998 +/- 0.0059	Mean: 0.0146 +/- 0.0087
Std Dev: 0.3397 +/- 0.0099	Std Dev: 0.4016 +/- 0.0042	Std Dev: 0.3451 +/- 0.0092



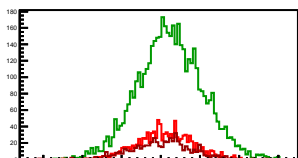
Cycle 7, Diffs

Entries: 1574	Entries: 4604	Entries: 1085
Mean: 0.0267 +/- 0.0093	Mean: 0.1158 +/- 0.0059	Mean: 0.0616 +/- 0.0111
Std Dev: 0.3675 +/- 0.0065	Std Dev: 0.3983 +/- 0.0042	Std Dev: 0.3653 +/- 0.0079



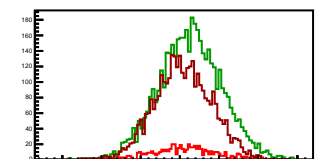
Cycle 8, Diffs

Entries: 1080	Entries: 4675	Entries: 595
Mean: 0.0444 +/- 0.0107	Mean: 0.1177 +/- 0.0060	Mean: 0.0080 +/- 0.0155
Std Dev: 0.3503 +/- 0.0075	Std Dev: 0.4111 +/- 0.0043	Std Dev: 0.3782 +/- 0.0110



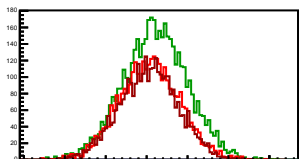
Cycle 9, Diffs

Entries: 594	Entries: 4572	Entries: 3419
Mean: 0.0476 +/- 0.0166	Mean: 0.1321 +/- 0.0059	Mean: 0.0402 +/- 0.0063
Std Dev: 0.4000 +/- 0.0117	Std Dev: 0.4018 +/- 0.0042	Std Dev: 0.3660 +/- 0.0044



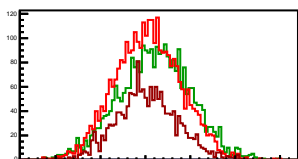
Cycle 10, Diffs

Entries: 3341	Entries: 4677	Entries: 3264
Mean: 0.0336 +/- 0.0064	Mean: 0.1013 +/- 0.0058	Mean: 0.0268 +/- 0.0063
Std Dev: 0.3690 +/- 0.0045	Std Dev: 0.3979 +/- 0.0041	Std Dev: 0.3574 +/- 0.0044



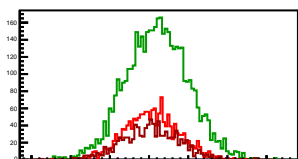
Cycle 11, Diffs

Entries: 3177	Entries: 2964	Entries: 1653
Mean: 0.0293 +/- 0.0065	Mean: 0.1047 +/- 0.0073	Mean: 0.0214 +/- 0.0083
Std Dev: 0.3646 +/- 0.0046	Std Dev: 0.3989 +/- 0.0052	Std Dev: 0.3382 +/- 0.0059



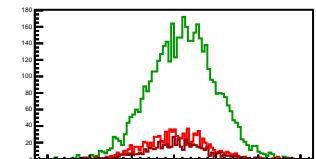
Cycle 12, Diffs

Entries: 1630	Entries: 4597	Entries: 1030
Mean: 0.0376 +/- 0.0085	Mean: 0.1031 +/- 0.0058	Mean: 0.0235 +/- 0.0115
Std Dev: 0.3432 +/- 0.0060	Std Dev: 0.3962 +/- 0.0041	Std Dev: 0.3682 +/- 0.0081



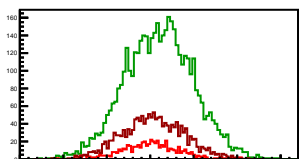
Cycle 13, Diffs

Entries: 1026	Entries: 4600	Entries: 567
Mean: 0.0205 +/- 0.0113	Mean: 0.1039 +/- 0.0057	Mean: 0.0243 +/- 0.0150
Std Dev: 0.3607 +/- 0.0080	Std Dev: 0.3888 +/- 0.0041	Std Dev: 0.3562 +/- 0.0166



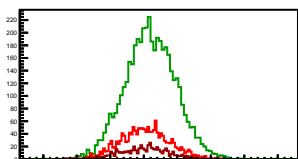
Cycle 14, Diffs

Entries: 566	Entries: 4627	Entries: 1592
Mean: 0.0021 +/- 0.0137	Mean: 0.1006 +/- 0.0058	Mean: 0.0293 +/- 0.0089
Std Dev: 0.3249 +/- 0.0097	Std Dev: 0.3943 +/- 0.0041	Std Dev: 0.3563 +/- 0.0063



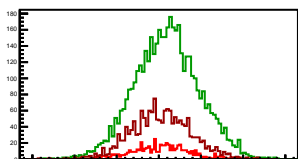
Cycle 15, Diffs

Entries: 1601	Entries: 4625	Entries: 589
Mean: 0.0165 +/- 0.0092	Mean: 0.0965 +/- 0.0056	Mean: 0.0001 +/- 0.0143
Std Dev: 0.3674 +/- 0.0065	Std Dev: 0.3790 +/- 0.0039	Std Dev: 0.3468 +/- 0.0101



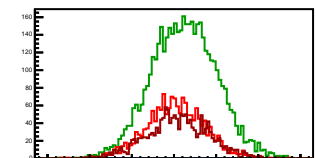
Cycle 16, Diffs

Entries: 581	Entries: 4581	Entries: 1658
Mean: 0.0243 +/- 0.0142	Mean: 0.0926 +/- 0.0056	Mean: 0.0256 +/- 0.0087
Std Dev: 0.3424 +/- 0.0100	Std Dev: 0.3817 +/- 0.0040	Std Dev: 0.3540 +/- 0.0081



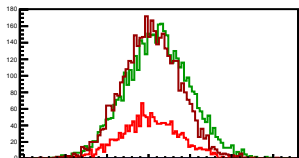
Cycle 17, Diffs

Entries: 1640	Entries: 4672	Entries: 1591
Mean: 0.0187 +/- 0.0085	Mean: 0.1191 +/- 0.0056	Mean: 0.0425 +/- 0.0092
Std Dev: 0.3440 +/- 0.0060	Std Dev: 0.3861 +/- 0.0040	Std Dev: 0.3689 +/- 0.0065



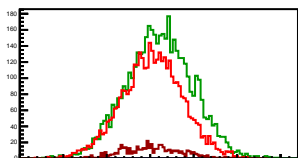
Cycle 18, Diffs

Entries: 1591	Entries: 4570	Entries: 4043
Mean: 0.0300 +/- 0.0088	Mean: 0.1072 +/- 0.0057	Mean: 0.0314 +/- 0.0055
Std Dev: 0.3519 +/- 0.0062	Std Dev: 0.3868 +/- 0.0040	Std Dev: 0.3467 +/- 0.0039



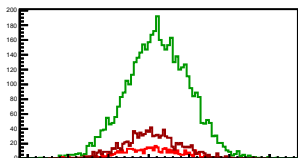
Cycle 19, Diffs

Entries: 3941	Entries: 4648	Entries: 520
Mean: 0.0224 +/- 0.0056	Mean: 0.1058 +/- 0.0056	Mean: 0.0210 +/- 0.0150
Std Dev: 0.3517 +/- 0.0040	Std Dev: 0.3785 +/- 0.0039	Std Dev: 0.3430 +/- 0.0166



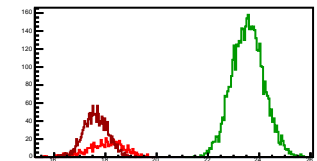
Cycle 20, Diffs

Entries: 496	Entries: 4652	Entries: 1097
Mean: 0.0181 +/- 0.0163	Mean: 0.1133 +/- 0.0057	Mean: 0.0358 +/- 0.0104
Std Dev: 0.3630 +/- 0.0115	Std Dev: 0.3871 +/- 0.0040	Std Dev: 0.3445 +/- 0.0074



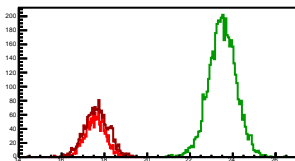
Cycle 1, Sums

Entries: 564	Entries: 4644	Entries: 1601
Mean: 18.0070 +/- 0.0293	Mean: 23.5577 +/- 0.0091	Mean: 17.6207 +/- 0.0116
Std Dev: 0.6956 +/- 0.0207	Std Dev: 0.6189 +/- 0.0064	Std Dev: 0.4638 +/- 0.0082



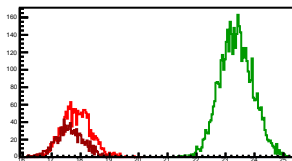
Cycle 2, Sums

Entries: 1600	Entries: 4603	Entries: 1693
Mean: 17.5811 +/- 0.0120	Mean: 23.5103 +/- 0.0095	Mean: 17.6338 +/- 0.0140
Std Dev: 0.4818 +/- 0.0085	Std Dev: 0.6437 +/- 0.0067	Std Dev: 0.5753 +/- 0.0099



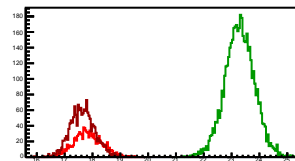
Cycle 3, Sums

Entries: 1666	Entries: 4604	Entries: 1077
Mean: 17.8544 +/- 0.0121	Mean: 23.3688 +/- 0.0083	Mean: 17.6317 +/- 0.0145
Std Dev: 0.4927 +/- 0.0085	Std Dev: 0.5648 +/- 0.0059	Std Dev: 0.4767 +/- 0.0103



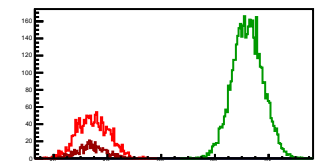
Cycle 4, Sums

Entries: 1069	Entries: 4700	Entries: 1591
Mean: 17.8276 +/- 0.0154	Mean: 23.2872 +/- 0.0077	Mean: 17.6452 +/- 0.0112
Std Dev: 0.5036 +/- 0.0109	Std Dev: 0.5310 +/- 0.0055	Std Dev: 0.4451 +/- 0.0079



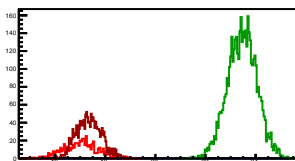
Cycle 5, Sums

Entries: 1591	Entries: 4636	Entries: 596
Mean: 17.4698 +/- 0.0146	Mean: 23.2175 +/- 0.0083	Mean: 17.4187 +/- 0.0209
Std Dev: 0.5830 +/- 0.0103	Std Dev: 0.5668 +/- 0.0059	Std Dev: 0.5109 +/- 0.0148



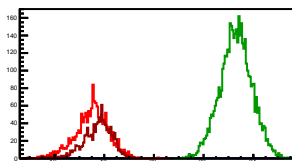
Cycle 6, Sums

Entries: 588	Entries: 4569	Entries: 1564
Mean: 17.0027 +/- 0.0273	Mean: 23.4616 +/- 0.0086	Mean: 17.3471 +/- 0.0125
Std Dev: 0.6526 +/- 0.0193	Std Dev: 0.5811 +/- 0.0061	Std Dev: 0.4941 +/- 0.0088



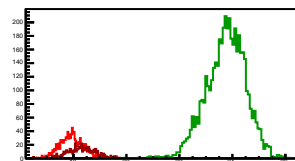
Cycle 7, Sums

Entries: 1574	Entries: 4604	Entries: 1085
Mean: 17.5032 +/- 0.0170	Mean: 23.3019 +/- 0.0094	Mean: 17.7337 +/- 0.0180
Std Dev: 0.6741 +/- 0.0120	Std Dev: 0.6377 +/- 0.0056	Std Dev: 0.5914 +/- 0.0127



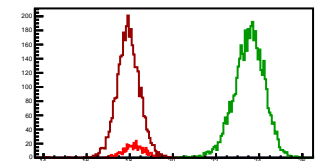
Cycle 8, Sums

Entries: 1080	Entries: 4675	Entries: 595
Mean: 17.9108 +/- 0.0134	Mean: 23.7523 +/- 0.0109	Mean: 18.3248 +/- 0.0210
Std Dev: 0.4391 +/- 0.0094	Std Dev: 0.7436 +/- 0.0077	Std Dev: 0.5111 +/- 0.0148



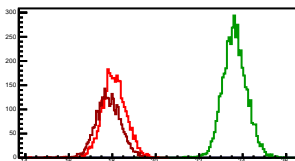
Cycle 9, Sums

Entries: 594	Entries: 4572	Entries: 3419
Mean: 18.2207 +/- 0.0205	Mean: 23.5361 +/- 0.0104	Mean: 17.9296 +/- 0.0092
Std Dev: 0.4952 +/- 0.0145	Std Dev: 0.7058 +/- 0.0074	Std Dev: 0.5354 +/- 0.0065



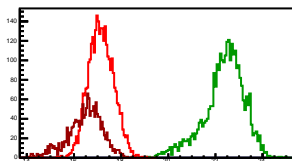
Cycle 10, Sums

Entries: 3341	Entries: 4677	Entries: 3264
Mean: 18.0899 +/- 0.0096	Mean: 23.6370 +/- 0.0061	Mean: 17.8145 +/- 0.0100
Std Dev: 0.5526 +/- 0.0068	Std Dev: 0.5559 +/- 0.0057	Std Dev: 0.5685 +/- 0.0070



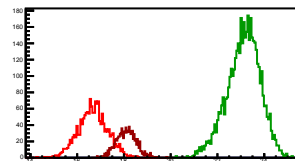
Cycle 11, Sums

Entries: 3177	Entries: 2964	Entries: 1653
Mean: 17.1439 +/- 0.0094	Mean: 22.9636 +/- 0.0158	Mean: 16.4723 +/- 0.0178
Std Dev: 0.5312 +/- 0.0067	Std Dev: 0.8608 +/- 0.0112	Std Dev: 0.7232 +/- 0.0126



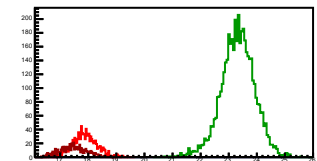
Cycle 12, Sums

Entries: 1630	Entries: 4597	Entries: 1030
Mean: 16.6659 +/- 0.0155	Mean: 23.1173 +/- 0.0105	Mean: 18.1960 +/- 0.0132
Std Dev: 0.6257 +/- 0.0110	Std Dev: 0.7091 +/- 0.0074	Std Dev: 0.4244 +/- 0.0094



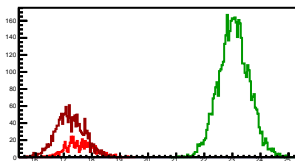
Cycle 13, Sums

Entries: 1026	Entries: 4600	Entries: 567
Mean: 17.8780 +/- 0.0131	Mean: 23.1401 +/- 0.0088	Mean: 17.4702 +/- 0.0200
Std Dev: 0.4191 +/- 0.0093	Std Dev: 0.5997 +/- 0.0063	Std Dev: 0.4751 +/- 0.0141



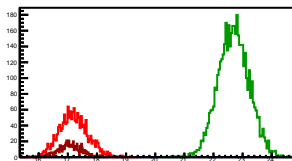
Cycle 14, Sums

Entries: 566	Entries: 4627	Entries: 1592
Mean: 17.5741 +/- 0.0206	Mean: 23.0555 +/- 0.0079	Mean: 17.2197 +/- 0.0126
Std Dev: 0.4894 +/- 0.0145	Std Dev: 0.5380 +/- 0.0056	Std Dev: 0.5014 +/- 0.0089



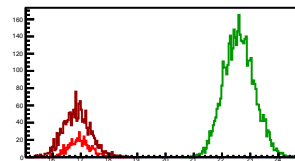
Cycle 15, Sums

Entries: 1601	Entries: 4625	Entries: 589
Mean: 17.1943 +/- 0.0123	Mean: 22.6893 +/- 0.0078	Mean: 17.0661 +/- 0.0159
Std Dev: 0.4911 +/- 0.0087	Std Dev: 0.5302 +/- 0.0055	Std Dev: 0.3870 +/- 0.0113



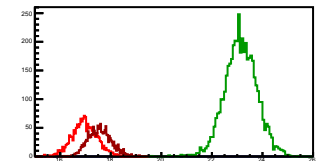
Cycle 16, Sums

Entries: 581	Entries: 4581	Entries: 1658
Mean: 16.9552 +/- 0.0165	Mean: 22.6071 +/- 0.0080	Mean: 16.8567 +/- 0.0119
Std Dev: 0.3971 +/- 0.0117	Std Dev: 0.5407 +/- 0.0056	Std Dev: 0.4837 +/- 0.0084



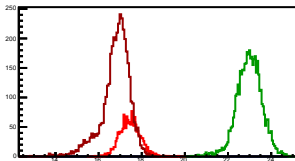
Cycle 17, Sums

Entries: 1640	Entries: 4672	Entries: 1591
Mean: 16.9600 +/- 0.0124	Mean: 23.1401 +/- 0.0084	Mean: 17.5713 +/- 0.0115
Std Dev: 0.5011 +/- 0.0088	Std Dev: 0.6435 +/- 0.0067	Std Dev: 0.4598 +/- 0.0082



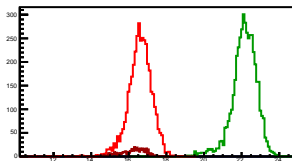
Cycle 18, Sums

Entries: 1591	Entries: 4570	Entries: 4043
Mean: 17.4584 +/- 0.0118	Mean: 22.9807 +/- 0.0087	Mean: 16.7980 +/- 0.0105
Std Dev: 0.4717 +/- 0.0084	Std Dev: 0.5883 +/- 0.0062	Std Dev: 0.6649 +/- 0.0074



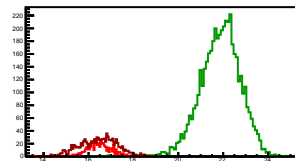
Cycle 19, Sums

Entries: 3941	Entries: 4648	Entries: 520
Mean: 16.5874 +/- 0.0104	Mean: 22.1424 +/- 0.0099	Mean: 16.2309 +/- 0.0298
Std Dev: 0.6531 +/- 0.0074	Std Dev: 0.6747 +/- 0.0070	Std Dev: 0.6791 +/- 0.0211



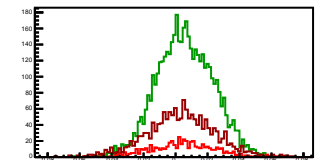
Cycle 20, Sums

Entries: 496	Entries: 4652	Entries: 1097
Mean: 16.4801 +/- 0.0230	Mean: 21.8673 +/- 0.0131	Mean: 16.4381 +/- 0.0244
Std Dev: 0.5120 +/- 0.0163	Std Dev: 0.8953 +/- 0.0093	Std Dev: 0.8076 +/- 0.0172



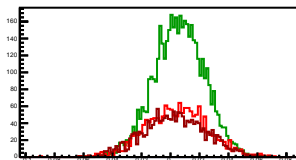
Cycle 1, Asyms

Entries: 564	Entries: 4644	Entries: 1601
Mean: 0.0038 +/- 0.0008	Mean: 0.0058 +/- 0.0003	Mean: 0.0031 +/- 0.0005
Std Dev: 0.0199 +/- 0.0006	Std Dev: 0.0175 +/- 0.0002	Std Dev: 0.0213 +/- 0.0004



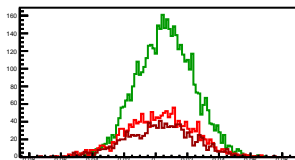
Cycle 2, Asyms

Entries: 1600	Entries: 4603	Entries: 1693
Mean: 0.0044 +/- 0.0005	Mean: 0.0060 +/- 0.0003	Mean: 0.0027 +/- 0.0005
Std Dev: 0.0213 +/- 0.0004	Std Dev: 0.0175 +/- 0.0002	Std Dev: 0.0214 +/- 0.0004



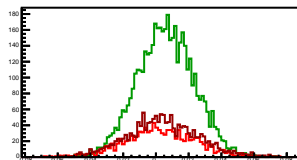
Cycle 3, Asyms

Entries: 1666	Entries: 4604	Entries: 1077
Mean: 0.0023 +/- 0.0005	Mean: 0.0061 +/- 0.0003	Mean: 0.0025 +/- 0.0006
Std Dev: 0.0211 +/- 0.0004	Std Dev: 0.0180 +/- 0.0002	Std Dev: 0.0212 +/- 0.0005



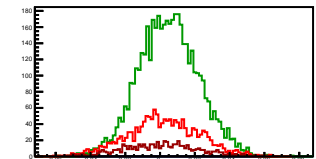
Cycle 4, Asyms

Entries: 1069	Entries: 4700	Entries: 1591
Mean: 0.0025 +/- 0.0007	Mean: 0.0060 +/- 0.0003	Mean: 0.0042 +/- 0.0005
Std Dev: 0.0214 +/- 0.0005	Std Dev: 0.0174 +/- 0.0002	Std Dev: 0.0215 +/- 0.0004



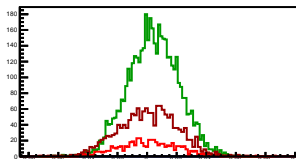
Cycle 5, Asyms

Entries: 1591	Entries: 4636	Entries: 596
Mean: 0.0016 +/- 0.0005	Mean: 0.0049 +/- 0.0003	Mean: 0.0002 +/- 0.0009
Std Dev: 0.0206 +/- 0.0004	Std Dev: 0.0172 +/- 0.0002	Std Dev: 0.0211 +/- 0.0006



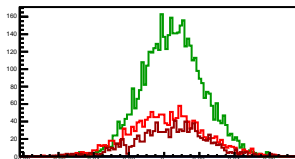
Cycle 6, Asyms

Entries: 588	Entries: 4659	Entries: 1564
Mean: 0.0008 +/- 0.0008	Mean: 0.0043 +/- 0.0003	Mean: 0.0008 +/- 0.0005
Std Dev: 0.0199 +/- 0.0006	Std Dev: 0.0171 +/- 0.0002	Std Dev: 0.0198 +/- 0.0004



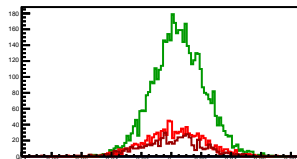
Cycle 7, Asyms

Entries: 1574	Entries: 4604	Entries: 1085
Mean: 0.0015 +/- 0.0005	Mean: 0.0050 +/- 0.0003	Mean: 0.0035 +/- 0.0006
Std Dev: 0.0210 +/- 0.0004	Std Dev: 0.0171 +/- 0.0002	Std Dev: 0.0205 +/- 0.0004



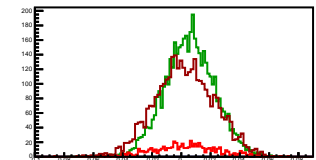
Cycle 8, Asyms

Entries: 1080	Entries: 4675	Entries: 595
Mean: 0.0025 +/- 0.0006	Mean: 0.0050 +/- 0.0003	Mean: 0.0004 +/- 0.0008
Std Dev: 0.0195 +/- 0.0004	Std Dev: 0.0173 +/- 0.0002	Std Dev: 0.0206 +/- 0.0006



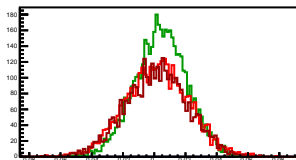
Cycle 9, Asyms

Entries: 534	Entries: 4572	Entries: 3419
Mean: 0.0026 +/- 0.0009	Mean: 0.0056 +/- 0.0003	Mean: 0.0022 +/- 0.0003
Std Dev: 0.0219 +/- 0.0006	Std Dev: 0.0171 +/- 0.0002	Std Dev: 0.0204 +/- 0.0002



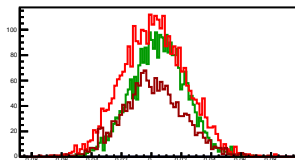
Cycle 10, Asyms

Entries: 3341	Entries: 4677	Entries: 3264
Mean: 0.0019 +/- 0.0004	Mean: 0.0043 +/- 0.0002	Mean: 0.0015 +/- 0.0004
Std Dev: 0.0204 +/- 0.0002	Std Dev: 0.0168 +/- 0.0002	Std Dev: 0.0200 +/- 0.0002



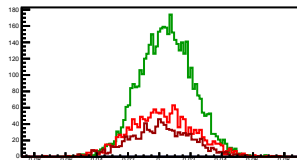
Cycle 11, Asyms

Entries: 3177	Entries: 2964	Entries: 1653
Mean: 0.0017 +/- 0.0004	Mean: 0.0047 +/- 0.0003	Mean: 0.0013 +/- 0.0005
Std Dev: 0.0212 +/- 0.0003	Std Dev: 0.0178 +/- 0.0002	Std Dev: 0.0204 +/- 0.0004



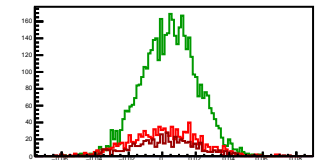
Cycle 12, Asyms

Entries: 1630	Entries: 4597	Entries: 1030
Mean: 0.0023 +/- 0.0005	Mean: 0.0045 +/- 0.0003	Mean: 0.0013 +/- 0.0006
Std Dev: 0.0205 +/- 0.0004	Std Dev: 0.0171 +/- 0.0002	Std Dev: 0.0203 +/- 0.0004



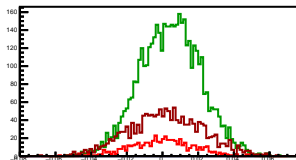
Cycle 13, Asyms

Entries: 1026	Entries: 4600	Entries: 567
Mean: 0.0011 +/- 0.0005	Mean: 0.0045 +/- 0.0002	Mean: 0.0014 +/- 0.0009
Std Dev: 0.0201 +/- 0.0004	Std Dev: 0.0166 +/- 0.0002	Std Dev: 0.0204 +/- 0.0006



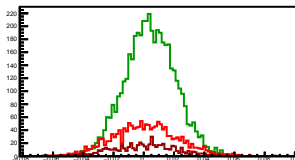
Cycle 14, Asyms

Entries: 566	Entries: 4627	Entries: 1592
Mean: 0.0001 +/- 0.0008	Mean: 0.0044 +/- 0.0003	Mean: 0.0019 +/- 0.0005
Std Dev: 0.0185 +/- 0.0005	Std Dev: 0.0171 +/- 0.0002	Std Dev: 0.0207 +/- 0.0004



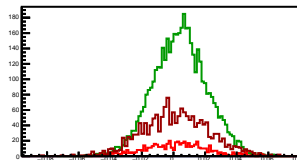
Cycle 15, Asyms

Entries: 1601	Entries: 4625	Entries: 589
Mean: 0.0014 +/- 0.0003	Mean: 0.0048 +/- 0.0002	Mean: 0.0000 +/- 0.0008
Std Dev: 0.0213 +/- 0.0004	Std Dev: 0.0167 +/- 0.0002	Std Dev: 0.0203 +/- 0.0006



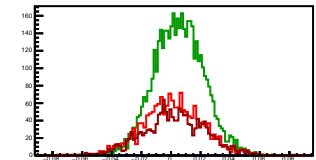
Cycle 16, Asyms

Entries: 581	Entries: 4581	Entries: 1658
Mean: 0.0015 +/- 0.0008	Mean: 0.0041 +/- 0.0002	Mean: 0.0015 +/- 0.0005
Std Dev: 0.0202 +/- 0.0006	Std Dev: 0.0169 +/- 0.0002	Std Dev: 0.0210 +/- 0.0004



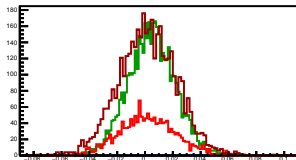
Cycle 17, Asyms

Entries: 1640	Entries: 4672	Entries: 1591
Mean: 0.0011 +/- 0.0005	Mean: 0.0052 +/- 0.0002	Mean: 0.0024 +/- 0.0005
Std Dev: 0.0202 +/- 0.0004	Std Dev: 0.0167 +/- 0.0002	Std Dev: 0.0210 +/- 0.0004



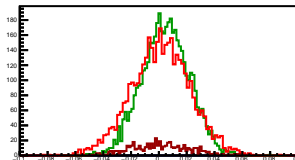
Cycle 18, Asyms

Entries: 1591	Entries: 4570	Entries: 4043
Mean: 0.0017 +/- 0.0005	Mean: 0.0047 +/- 0.0002	Mean: 0.0019 +/- 0.0003
Std Dev: 0.0201 +/- 0.0004	Std Dev: 0.0168 +/- 0.0002	Std Dev: 0.0207 +/- 0.0002



Cycle 19, Asyms

Entries: 3941	Entries: 4648	Entries: 520
Mean: 0.0014 +/- 0.0003	Mean: 0.0048 +/- 0.0003	Mean: 0.0013 +/- 0.0009
Std Dev: 0.0212 +/- 0.0002	Std Dev: 0.0171 +/- 0.0002	Std Dev: 0.0211 +/- 0.0007



Cycle 20, Asyms

Entries: 496	Entries: 4652	Entries: 1097
Mean: 0.0010 +/- 0.0010	Mean: 0.0052 +/- 0.0003	Mean: 0.0022 +/- 0.0006
Std Dev: 0.0220 +/- 0.0007	Std Dev: 0.0177 +/- 0.0002	Std Dev: 0.0210 +/- 0.0004

