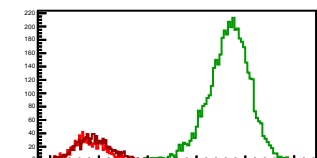
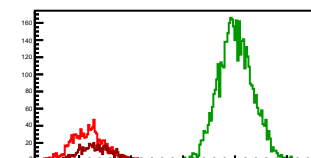


Cycle 1, PosHel

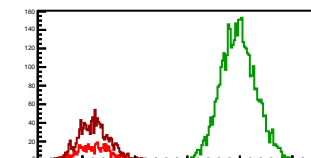
Entries: 1058	Entries: 4571	Entries: 1075
Mean: 7.7999 \pm 0.0096	Mean: 10.6588 \pm 0.0063	Mean: 7.8940 \pm 0.0105
Std Dev: 0.3117 \pm 0.0068	Std Dev: 0.4254 \pm 0.0044	Std Dev: 0.3450 \pm 0.0074

**Cycle 2, PosHel**

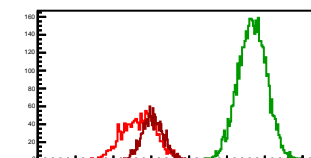
Entries: 1063	Entries: 4633	Entries: 579
Mean: 8.1714 \pm 0.0095	Mean: 11.0149 \pm 0.0048	Mean: 8.3231 \pm 0.0124
Std Dev: 0.3091 \pm 0.0067	Std Dev: 0.3269 \pm 0.0034	Std Dev: 0.2974 \pm 0.0087

**Cycle 3, PosHel**

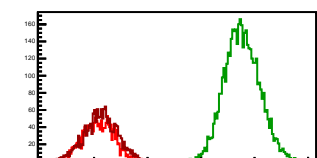
Entries: 577	Entries: 4175	Entries: 1302
Mean: 8.2271 \pm 0.0125	Mean: 10.9730 \pm 0.0051	Mean: 8.2224 \pm 0.0081
Std Dev: 0.3004 \pm 0.0088	Std Dev: 0.3310 \pm 0.0036	Std Dev: 0.2916 \pm 0.0057

**Cycle 4, PosHel**

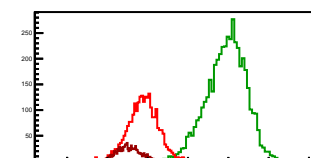
Entries: 1303	Entries: 4632	Entries: 1609
Mean: 7.6750 \pm 0.0125	Mean: 10.6712 \pm 0.0055	Mean: 8.0442 \pm 0.0069
Std Dev: 0.4497 \pm 0.0088	Std Dev: 0.3772 \pm 0.0039	Std Dev: 0.2776 \pm 0.0049

**Cycle 5, PosHel**

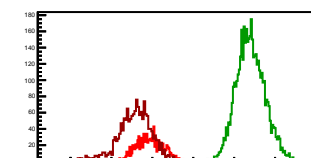
Entries: 1600	Entries: 4648	Entries: 1677
Mean: 8.0845 \pm 0.0074	Mean: 10.7670 \pm 0.0048	Mean: 8.1293 \pm 0.0075
Std Dev: 0.2949 \pm 0.0052	Std Dev: 0.3279 \pm 0.0034	Std Dev: 0.3062 \pm 0.0053

**Cycle 6, PosHel**

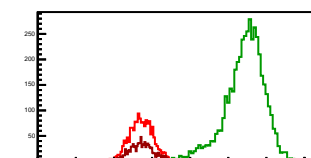
Entries: 2549	Entries: 4600	Entries: 1010
Mean: 7.8803 \pm 0.0076	Mean: 9.9475 \pm 0.0073	Mean: 7.5289 \pm 0.0091
Std Dev: 0.3824 \pm 0.0054	Std Dev: 0.4922 \pm 0.0051	Std Dev: 0.2906 \pm 0.0085

**Cycle 7, PosHel**

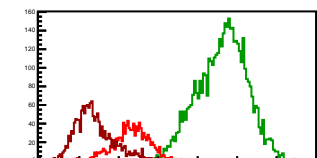
Entries: 1018	Entries: 4591	Entries: 1654
Mean: 7.9377 \pm 0.0108	Mean: 10.4040 \pm 0.0051	Mean: 7.5586 \pm 0.0106
Std Dev: 0.3442 \pm 0.0076	Std Dev: 0.3486 \pm 0.0036	Std Dev: 0.4329 \pm 0.0075

**Cycle 8, PosHel**

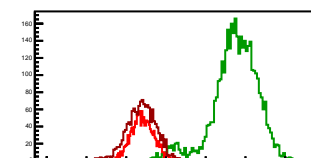
Entries: 1623	Entries: 4610	Entries: 1086
Mean: 7.7078 \pm 0.0082	Mean: 10.4105 \pm 0.0083	Mean: 7.7324 \pm 0.0096
Std Dev: 0.3322 \pm 0.0058	Std Dev: 0.5604 \pm 0.0058	Std Dev: 0.3168 \pm 0.0068

**Cycle 9, PosHel**

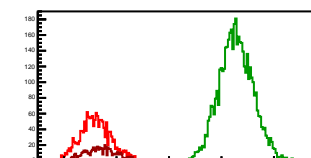
Entries: 1062	Entries: 4676	Entries: 1587
Mean: 7.3185 \pm 0.0139	Mean: 9.6302 \pm 0.0090	Mean: 6.3832 \pm 0.0123
Std Dev: 0.4520 \pm 0.0098	Std Dev: 0.6179 \pm 0.0064	Std Dev: 0.4894 \pm 0.0087

**Cycle 10, PosHel**

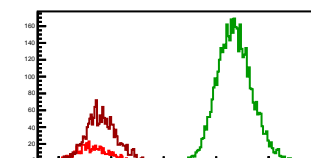
Entries: 1582	Entries: 3969	Entries: 1442
Mean: 7.4166 \pm 0.0075	Mean: 9.7377 \pm 0.0093	Mean: 7.3764 \pm 0.0101
Std Dev: 0.2976 \pm 0.0053	Std Dev: 0.5833 \pm 0.0065	Std Dev: 0.3821 \pm 0.0071

**Cycle 11, PosHel**

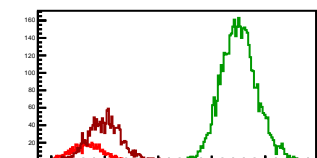
Entries: 1605	Entries: 4699	Entries: 590
Mean: 7.6023 \pm 0.0074	Mean: 10.2786 \pm 0.0047	Mean: 7.6994 \pm 0.0122
Std Dev: 0.2962 \pm 0.0052	Std Dev: 0.3227 \pm 0.0033	Std Dev: 0.2940 \pm 0.0086

**Cycle 12, PosHel**

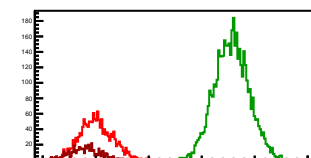
Entries: 577	Entries: 4692	Entries: 1591
Mean: 7.6476 \pm 0.0120	Mean: 10.3503 \pm 0.0048	Mean: 7.8143 \pm 0.0072
Std Dev: 0.2879 \pm 0.0085	Std Dev: 0.3255 \pm 0.0034	Std Dev: 0.2892 \pm 0.0051

**Cycle 13, PosHel**

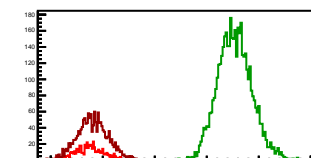
Entries: 626	Entries: 4680	Entries: 1578
Mean: 7.6644 \pm 0.0112	Mean: 10.5094 \pm 0.0048	Mean: 7.9988 \pm 0.0076
Std Dev: 0.2806 \pm 0.0079	Std Dev: 0.3288 \pm 0.0034	Std Dev: 0.3006 \pm 0.0054

**Cycle 14, PosHel**

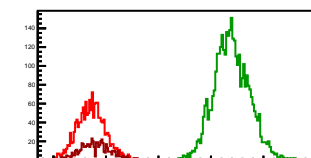
Entries: 1579	Entries: 4585	Entries: 559
Mean: 8.0040 \pm 0.0078	Mean: 10.6275 \pm 0.0048	Mean: 7.7995 \pm 0.0124
Std Dev: 0.3109 \pm 0.0055	Std Dev: 0.3228 \pm 0.0034	Std Dev: 0.2927 \pm 0.0088

**Cycle 15, PosHel**

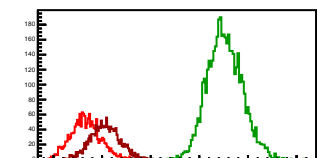
Entries: 562	Entries: 4575	Entries: 1598
Mean: 7.7435 \pm 0.0118	Mean: 10.5393 \pm 0.0048	Mean: 7.8103 \pm 0.0074
Std Dev: 0.2794 \pm 0.0083	Std Dev: 0.3265 \pm 0.0034	Std Dev: 0.2973 \pm 0.0053

**Cycle 16, PosHel**

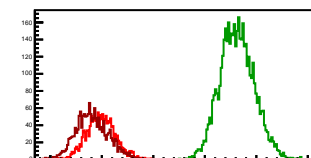
Entries: 1596	Entries: 3647	Entries: 599
Mean: 7.7218 \pm 0.0069	Mean: 10.3921 \pm 0.0056	Mean: 7.7950 \pm 0.0118
Std Dev: 0.2756 \pm 0.0049	Std Dev: 0.3366 \pm 0.0039	Std Dev: 0.2887 \pm 0.0083

**Cycle 17, PosHel**

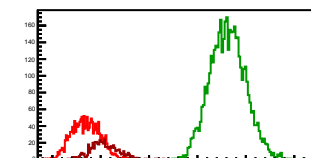
Entries: 1673	Entries: 4610	Entries: 1605
Mean: 7.6636 \pm 0.0074	Mean: 10.5235 \pm 0.0053	Mean: 8.0656 \pm 0.0075
Std Dev: 0.3035 \pm 0.0052	Std Dev: 0.3572 \pm 0.0037	Std Dev: 0.3006 \pm 0.0053

**Cycle 18, PosHel**

Entries: 1596	Entries: 4602	Entries: 1656
Mean: 7.9876 \pm 0.0071	Mean: 10.6275 \pm 0.0049	Mean: 7.8108 \pm 0.0078
Std Dev: 0.2831 \pm 0.0050	Std Dev: 0.3314 \pm 0.0035	Std Dev: 0.3155 \pm 0.0055

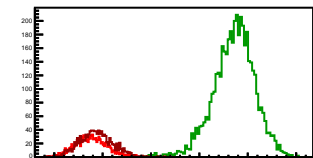
**Cycle 19, PosHel**

Entries: 1643	Entries: 4616	Entries: 587
Mean: 7.6990 \pm 0.0072	Mean: 10.6283 \pm 0.0054	Mean: 8.0745 \pm 0.0119
Std Dev: 0.2902 \pm 0.0051	Std Dev: 0.3656 \pm 0.0038	Std Dev: 0.2894 \pm 0.0084

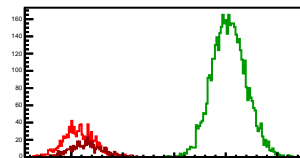


Cycle 1, NegHel

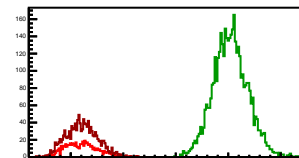
Entries: 1058	Entries: 4571	Entries: 1075
Mean: 7.7658 +/- 0.0101	Mean: 10.7145 +/- 0.0063	Mean: 7.8677 +/- 0.0104
Std Dev: 0.3292 +/- 0.0072	Std Dev: 0.4293 +/- 0.0045	Std Dev: 0.3410 +/- 0.0074

**Cycle 2, NegHel**

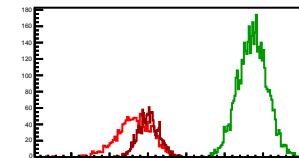
Entries: 1063	Entries: 4633	Entries: 579
Mean: 8.1479 +/- 0.0095	Mean: 11.0657 +/- 0.0048	Mean: 8.2974 +/- 0.0124
Std Dev: 0.3105 +/- 0.0067	Std Dev: 0.3289 +/- 0.0034	Std Dev: 0.2987 +/- 0.0088

**Cycle 3, NegHel**

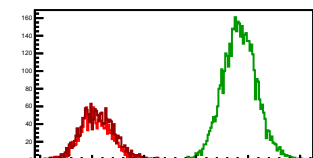
Entries: 577	Entries: 4175	Entries: 1302
Mean: 8.2028 +/- 0.0126	Mean: 11.0429 +/- 0.0051	Mean: 8.2088 +/- 0.0082
Std Dev: 0.3035 +/- 0.0089	Std Dev: 0.3293 +/- 0.0036	Std Dev: 0.2965 +/- 0.0059

**Cycle 4, NegHel**

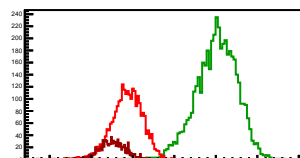
Entries: 1303	Entries: 4632	Entries: 1609
Mean: 7.6445 +/- 0.0125	Mean: 10.7254 +/- 0.0056	Mean: 8.0215 +/- 0.0067
Std Dev: 0.4500 +/- 0.0088	Std Dev: 0.3786 +/- 0.0039	Std Dev: 0.2668 +/- 0.0047

**Cycle 5, NegHel**

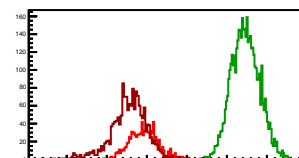
Entries: 1600	Entries: 4648	Entries: 1677
Mean: 8.0689 +/- 0.0073	Mean: 10.8402 +/- 0.0043	Mean: 8.1068 +/- 0.0079
Std Dev: 0.2901 +/- 0.0051	Std Dev: 0.3219 +/- 0.0037	Std Dev: 0.3234 +/- 0.0056

**Cycle 6, NegHel**

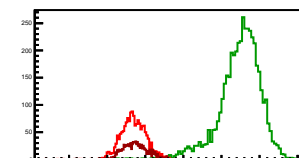
Entries: 2549	Entries: 4600	Entries: 1010
Mean: 7.8626 +/- 0.0075	Mean: 10.0181 +/- 0.0072	Mean: 7.5193 +/- 0.0095
Std Dev: 0.3791 +/- 0.0053	Std Dev: 0.4913 +/- 0.0051	Std Dev: 0.3031 +/- 0.0067

**Cycle 7, NegHel**

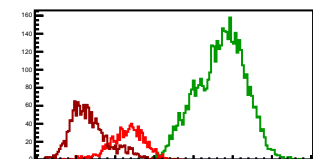
Entries: 1018	Entries: 4591	Entries: 1654
Mean: 7.9216 +/- 0.0111	Mean: 10.4645 +/- 0.0052	Mean: 7.5484 +/- 0.0108
Std Dev: 0.3530 +/- 0.0078	Std Dev: 0.3503 +/- 0.0037	Std Dev: 0.4398 +/- 0.0076

**Cycle 8, NegHel**

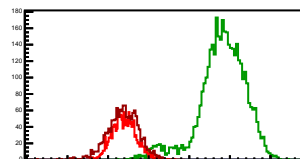
Entries: 1623	Entries: 4610	Entries: 1086
Mean: 7.6865 +/- 0.0084	Mean: 10.4725 +/- 0.0083	Mean: 7.7327 +/- 0.0098
Std Dev: 0.3404 +/- 0.0060	Std Dev: 0.5638 +/- 0.0059	Std Dev: 0.3226 +/- 0.0069

**Cycle 9, NegHel**

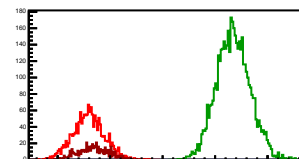
Entries: 1062	Entries: 4676	Entries: 1587
Mean: 7.3079 +/- 0.0136	Mean: 9.6950 +/- 0.0091	Mean: 6.3571 +/- 0.0126
Std Dev: 0.4438 +/- 0.0096	Std Dev: 0.6213 +/- 0.0064	Std Dev: 0.5020 +/- 0.0089

**Cycle 10, NegHel**

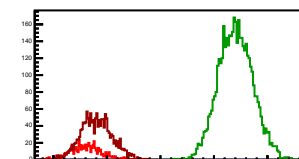
Entries: 1582	Entries: 3969	Entries: 1442
Mean: 7.4027 +/- 0.0075	Mean: 9.8010 +/- 0.0094	Mean: 7.3643 +/- 0.0101
Std Dev: 0.2978 +/- 0.0053	Std Dev: 0.5914 +/- 0.0066	Std Dev: 0.3852 +/- 0.0072

**Cycle 11, NegHel**

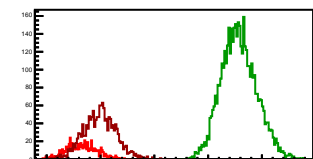
Entries: 1605	Entries: 4699	Entries: 590
Mean: 7.5873 +/- 0.0074	Mean: 10.3458 +/- 0.0047	Mean: 7.6853 +/- 0.0121
Std Dev: 0.2975 +/- 0.0053	Std Dev: 0.3210 +/- 0.0033	Std Dev: 0.2903 +/- 0.0085

**Cycle 12, NegHel**

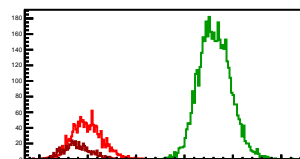
Entries: 577	Entries: 4692	Entries: 1591
Mean: 7.6087 +/- 0.0122	Mean: 10.4056 +/- 0.0047	Mean: 7.8046 +/- 0.0074
Std Dev: 0.2931 +/- 0.0088	Std Dev: 0.3210 +/- 0.0033	Std Dev: 0.2939 +/- 0.0052

**Cycle 13, NegHel**

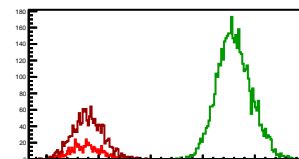
Entries: 626	Entries: 4680	Entries: 1578
Mean: 7.6467 +/- 0.0110	Mean: 10.5713 +/- 0.0048	Mean: 7.9832 +/- 0.0076
Std Dev: 0.2757 +/- 0.0078	Std Dev: 0.3273 +/- 0.0034	Std Dev: 0.3000 +/- 0.0053

**Cycle 14, NegHel**

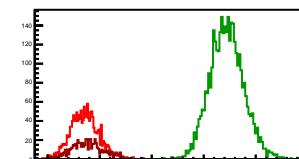
Entries: 1579	Entries: 4585	Entries: 559
Mean: 7.9896 +/- 0.0078	Mean: 10.6241 +/- 0.0049	Mean: 7.7775 +/- 0.0124
Std Dev: 0.3114 +/- 0.0055	Std Dev: 0.3293 +/- 0.0034	Std Dev: 0.2921 +/- 0.0087

**Cycle 15, NegHel**

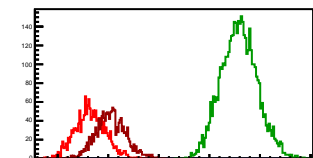
Entries: 562	Entries: 4575	Entries: 1598
Mean: 7.7553 +/- 0.0121	Mean: 10.6047 +/- 0.0048	Mean: 7.7966 +/- 0.0075
Std Dev: 0.2873 +/- 0.0086	Std Dev: 0.3269 +/- 0.0034	Std Dev: 0.2994 +/- 0.0053

**Cycle 16, NegHel**

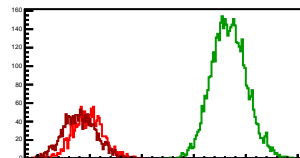
Entries: 1596	Entries: 3647	Entries: 599
Mean: 7.7136 +/- 0.0068	Mean: 10.4429 +/- 0.0054	Mean: 7.7668 +/- 0.0124
Std Dev: 0.2702 +/- 0.0048	Std Dev: 0.3245 +/- 0.0038	Std Dev: 0.3037 +/- 0.0088

**Cycle 17, NegHel**

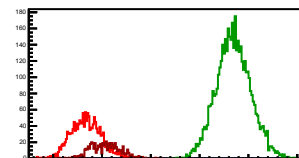
Entries: 1673	Entries: 4610	Entries: 1605
Mean: 7.6467 +/- 0.0072	Mean: 10.5877 +/- 0.0053	Mean: 8.0506 +/- 0.0073
Std Dev: 0.2945 +/- 0.0051	Std Dev: 0.3567 +/- 0.0037	Std Dev: 0.2911 +/- 0.0051

**Cycle 18, NegHel**

Entries: 1596	Entries: 4602	Entries: 1656
Mean: 7.9618 +/- 0.0071	Mean: 10.6776 +/- 0.0049	Mean: 7.8043 +/- 0.0078
Std Dev: 0.2835 +/- 0.0050	Std Dev: 0.3354 +/- 0.0035	Std Dev: 0.3162 +/- 0.0055

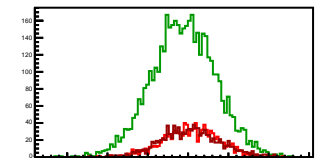
**Cycle 19, NegHel**

Entries: 1643	Entries: 4616	Entries: 587
Mean: 7.6754 +/- 0.0075	Mean: 10.6947 +/- 0.0052	Mean: 8.0613 +/- 0.0124
Std Dev: 0.3037 +/- 0.0053	Std Dev: 0.3511 +/- 0.0037	Std Dev: 0.3010 +/- 0.0088



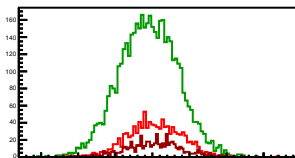
Cycle 1, Diffs

Entries: 1058	Entries: 4571	Entries: 1075
Mean: 0.0341 +/- 0.0106	Mean: -0.0557 +/- 0.0058	Mean: 0.0264 +/- 0.0111
Std Dev: 0.3440 +/- 0.0075	Std Dev: 0.3952 +/- 0.0041	Std Dev: 0.3636 +/- 0.0078



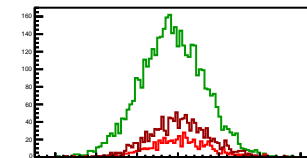
Cycle 2, Diffs

Entries: 1063	Entries: 4633	Entries: 579
Mean: 0.0235 +/- 0.0110	Mean: -0.0508 +/- 0.0058	Mean: 0.0258 +/- 0.0151
Std Dev: 0.3598 +/- 0.0078	Std Dev: 0.3939 +/- 0.0041	Std Dev: 0.3623 +/- 0.0106



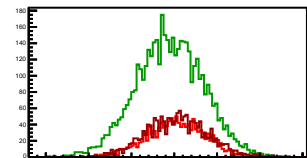
Cycle 3, Diffs

Entries: 577	Entries: 4175	Entries: 1302
Mean: 0.0242 +/- 0.0151	Mean: -0.0699 +/- 0.0060	Mean: 0.0135 +/- 0.0099
Std Dev: 0.3620 +/- 0.0107	Std Dev: 0.3908 +/- 0.0043	Std Dev: 0.3566 +/- 0.0070



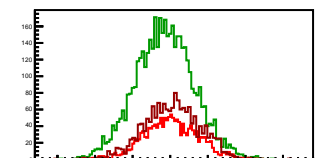
Cycle 4, Diffs

Entries: 1303	Entries: 4632	Entries: 1609
Mean: 0.0305 +/- 0.0096	Mean: -0.0542 +/- 0.0058	Mean: 0.0227 +/- 0.0088
Std Dev: 0.3476 +/- 0.0068	Std Dev: 0.3944 +/- 0.0041	Std Dev: 0.3520 +/- 0.0062



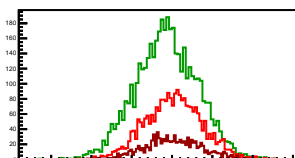
Cycle 5, Diffs

Entries: 1600	Entries: 4648	Entries: 1677
Mean: 0.0156 +/- 0.0089	Mean: -0.0732 +/- 0.0057	Mean: 0.0225 +/- 0.0090
Std Dev: 0.3560 +/- 0.0063	Std Dev: 0.3889 +/- 0.0040	Std Dev: 0.3697 +/- 0.0064



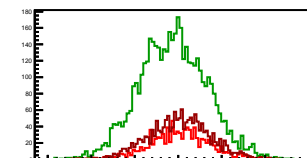
Cycle 6, Diffs

Entries: 2549	Entries: 4600	Entries: 1010
Mean: 0.0177 +/- 0.0070	Mean: -0.0706 +/- 0.0056	Mean: 0.0096 +/- 0.0108
Std Dev: 0.3527 +/- 0.0049	Std Dev: 0.3816 +/- 0.0040	Std Dev: 0.3447 +/- 0.0077



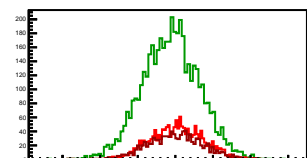
Cycle 7, Diffs

Entries: 1018	Entries: 4591	Entries: 1654
Mean: 0.0161 +/- 0.0110	Mean: -0.0605 +/- 0.0058	Mean: 0.0102 +/- 0.0086
Std Dev: 0.3511 +/- 0.0078	Std Dev: 0.3905 +/- 0.0041	Std Dev: 0.3501 +/- 0.0061



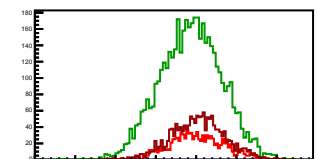
Cycle 8, Diffs

Entries: 1623	Entries: 4610	Entries: 1086
Mean: 0.0213 +/- 0.0087	Mean: -0.0621 +/- 0.0056	Mean: -0.0002 +/- 0.0113
Std Dev: 0.3486 +/- 0.0061	Std Dev: 0.3801 +/- 0.0040	Std Dev: 0.3721 +/- 0.0080



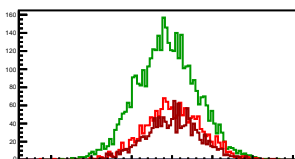
Cycle 9, Diffs

Entries: 1062	Entries: 4676	Entries: 1597
Mean: 0.0106 +/- 0.0105	Mean: -0.0648 +/- 0.0056	Mean: 0.0261 +/- 0.0084
Std Dev: 0.3424 +/- 0.0074	Std Dev: 0.3842 +/- 0.0040	Std Dev: 0.3328 +/- 0.0059



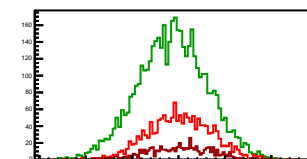
Cycle 10, Diffs

Entries: 1582	Entries: 4569	Entries: 1442
Mean: 0.0139 +/- 0.0089	Mean: -0.0633 +/- 0.0060	Mean: 0.0121 +/- 0.0090
Std Dev: 0.3531 +/- 0.0063	Std Dev: 0.3786 +/- 0.0042	Std Dev: 0.3423 +/- 0.0064



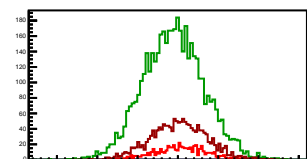
Cycle 11, Diffs

Entries: 1605	Entries: 4699	Entries: 590
Mean: 0.0150 +/- 0.0085	Mean: -0.0671 +/- 0.0054	Mean: 0.0140 +/- 0.0141
Std Dev: 0.3413 +/- 0.0060	Std Dev: 0.3725 +/- 0.0038	Std Dev: 0.3404 +/- 0.0100



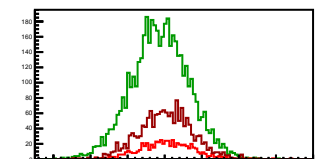
Cycle 12, Diffs

Entries: 577	Entries: 4692	Entries: 1591
Mean: 0.0390 +/- 0.0141	Mean: -0.0553 +/- 0.0056	Mean: 0.0097 +/- 0.0087
Std Dev: 0.3376 +/- 0.0099	Std Dev: 0.3778 +/- 0.0039	Std Dev: 0.3473 +/- 0.0062



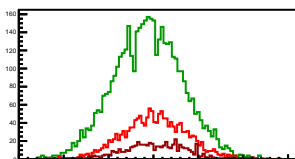
Cycle 13, Diffs

Entries: 626	Entries: 4680	Entries: 1578
Mean: 0.0168 +/- 0.0086	Mean: -0.0642 +/- 0.0057	Mean: 0.0150 +/- 0.0089
Std Dev: 0.3541 +/- 0.0100	Std Dev: 0.3881 +/- 0.0040	Std Dev: 0.3591 +/- 0.0064



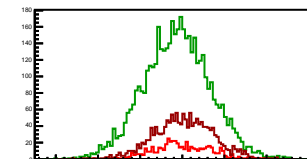
Cycle 14, Diffs

Entries: 1579	Entries: 4585	Entries: 559
Mean: 0.0144 +/- 0.0089	Mean: -0.0591 +/- 0.0057	Mean: 0.0220 +/- 0.0150
Std Dev: 0.3530 +/- 0.0063	Std Dev: 0.3862 +/- 0.0040	Std Dev: 0.3550 +/- 0.0106



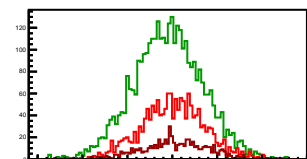
Cycle 15, Diffs

Entries: 562	Entries: 4575	Entries: 1598
Mean: -0.0119 +/- 0.0145	Mean: -0.0653 +/- 0.0058	Mean: 0.0137 +/- 0.0086
Std Dev: 0.3428 +/- 0.0102	Std Dev: 0.3922 +/- 0.0041	Std Dev: 0.3458 +/- 0.0061



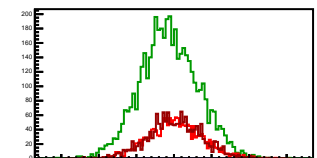
Cycle 16, Diffs

Entries: 1596	Entries: 3647	Entries: 599
Mean: 0.0082 +/- 0.0089	Mean: -0.0507 +/- 0.0064	Mean: 0.0281 +/- 0.0142
Std Dev: 0.3557 +/- 0.0063	Std Dev: 0.3858 +/- 0.0045	Std Dev: 0.3465 +/- 0.0100



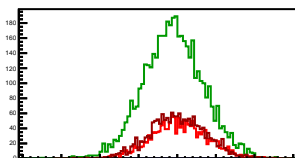
Cycle 17, Diffs

Entries: 1673	Entries: 4610	Entries: 1605
Mean: 0.0224 +/- 0.0086	Mean: -0.0642 +/- 0.0057	Mean: 0.0150 +/- 0.0089
Std Dev: 0.3534 +/- 0.0061	Std Dev: 0.3860 +/- 0.0040	Std Dev: 0.3582 +/- 0.0063



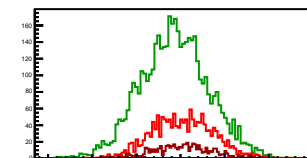
Cycle 18, Diffs

Entries: 1596	Entries: 4602	Entries: 1656
Mean: 0.0258 +/- 0.0090	Mean: -0.0590 +/- 0.0057	Mean: 0.0065 +/- 0.0089
Std Dev: 0.3586 +/- 0.0063	Std Dev: 0.3876 +/- 0.0040	Std Dev: 0.3611 +/- 0.0063



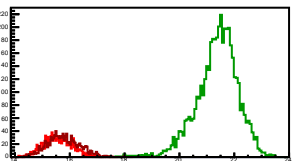
Cycle 19, Diffs

Entries: 1643	Entries: 4616	Entries: 587
Mean: 0.0236 +/- 0.0086	Mean: -0.0664 +/- 0.0057	Mean: 0.0131 +/- 0.0141
Std Dev: 0.3473 +/- 0.0061	Std Dev: 0.3881 +/- 0.0040	Std Dev: 0.3405 +/- 0.0099



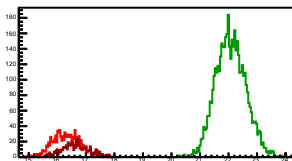
Cycle 1, Sums

Entries: 1058	Entries: 4571	Entries: 1075
Mean: 15.5658 \pm 0.0166	Mean: 21.3733 \pm 0.0112	Mean: 15.7617 \pm 0.0177
Std Dev: 0.5410 \pm 0.0118	Std Dev: 0.7578 \pm 0.0079	Std Dev: 0.5817 \pm 0.0125



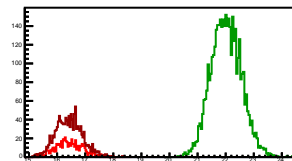
Cycle 2, Sums

Entries: 1063	Entries: 4633	Entries: 579
Mean: 16.3193 \pm 0.0155	Mean: 22.0805 \pm 0.0077	Mean: 16.6205 \pm 0.0197
Std Dev: 0.5044 \pm 0.0105	Std Dev: 0.5244 \pm 0.0054	Std Dev: 0.4735 \pm 0.0139



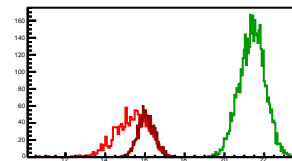
Cycle 3, Sums

Entries: 577	Entries: 4175	Entries: 1302
Mean: 16.4299 \pm 0.0201	Mean: 22.0159 \pm 0.0082	Mean: 16.4312 \pm 0.0130
Std Dev: 0.4835 \pm 0.0142	Std Dev: 0.5324 \pm 0.0058	Std Dev: 0.4677 \pm 0.0092



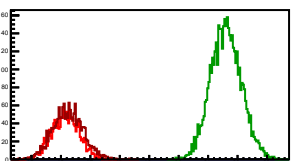
Cycle 4, Sums

Entries: 1303	Entries: 4632	Entries: 1609
Mean: 15.3194 \pm 0.0230	Mean: 21.3966 \pm 0.0095	Mean: 16.0657 \pm 0.0104
Std Dev: 0.8299 \pm 0.0163	Std Dev: 0.6447 \pm 0.0067	Std Dev: 0.4153 \pm 0.0073



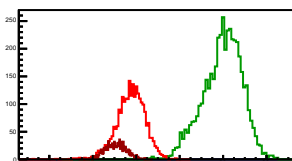
Cycle 5, Sums

Entries: 1600	Entries: 4648	Entries: 1677
Mean: 16.1533 \pm 0.0116	Mean: 21.6073 \pm 0.0076	Mean: 16.2360 \pm 0.0125
Std Dev: 0.4643 \pm 0.0082	Std Dev: 0.5196 \pm 0.0054	Std Dev: 0.5099 \pm 0.0088



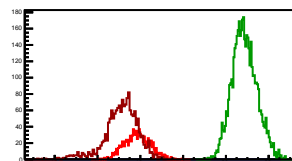
Cycle 6, Sums

Entries: 2549	Entries: 4600	Entries: 1010
Mean: 15.7429 \pm 0.0134	Mean: 19.9656 \pm 0.0134	Mean: 15.0481 \pm 0.0152
Std Dev: 0.6749 \pm 0.0095	Std Dev: 0.9064 \pm 0.0094	Std Dev: 0.4836 \pm 0.0108



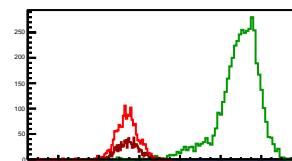
Cycle 7, Sums

Entries: 1018	Entries: 4591	Entries: 1654
Mean: 15.8593 \pm 0.0189	Mean: 20.8685 \pm 0.0086	Mean: 15.1070 \pm 0.0197
Std Dev: 0.6024 \pm 0.0134	Std Dev: 0.5798 \pm 0.0061	Std Dev: 0.7394 \pm 0.0139



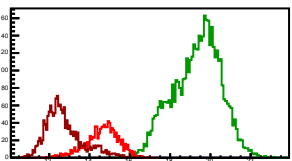
Cycle 8, Sums

Entries: 1623	Entries: 4610	Entries: 1086
Mean: 15.3943 \pm 0.0143	Mean: 20.8830 \pm 0.0156	Mean: 15.4651 \pm 0.0158
Std Dev: 0.5752 \pm 0.0101	Std Dev: 1.0580 \pm 0.0110	Std Dev: 0.5200 \pm 0.0112



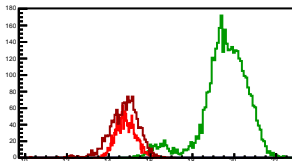
Cycle 9, Sums

Entries: 1062	Entries: 4676	Entries: 1597
Mean: 14.6255 \pm 0.0254	Mean: 19.3252 \pm 0.0172	Mean: 12.7403 \pm 0.0234
Std Dev: 0.8279 \pm 0.0180	Std Dev: 1.1782 \pm 0.0122	Std Dev: 0.9339 \pm 0.0165



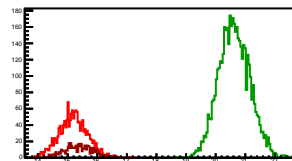
Cycle 10, Sums

Entries: 1582	Entries: 3969	Entries: 1442
Mean: 14.8193 \pm 0.0121	Mean: 19.5387 \pm 0.0177	Mean: 14.7408 \pm 0.0181
Std Dev: 0.4794 \pm 0.0085	Std Dev: 1.1128 \pm 0.0125	Std Dev: 0.6868 \pm 0.0128



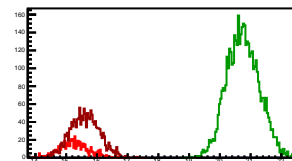
Cycle 11, Sums

Entries: 1605	Entries: 4699	Entries: 590
Mean: 15.1895 \pm 0.0121	Mean: 20.6244 \pm 0.0077	Mean: 15.3847 \pm 0.0197
Std Dev: 0.4855 \pm 0.0086	Std Dev: 0.5250 \pm 0.0054	Std Dev: 0.4749 \pm 0.0139



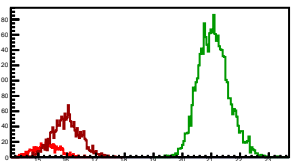
Cycle 12, Sums

Entries: 577	Entries: 4592	Entries: 1591
Mean: 15.2553 \pm 0.0197	Mean: 20.7559 \pm 0.0077	Mean: 15.6169 \pm 0.0117
Std Dev: 0.4729 \pm 0.0139	Std Dev: 0.5247 \pm 0.0055	Std Dev: 0.4684 \pm 0.0083



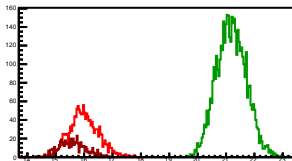
Cycle 13, Sums

Entries: 626	Entries: 4680	Entries: 1578
Mean: 15.3064 \pm 0.0171	Mean: 21.0806 \pm 0.0077	Mean: 15.9820 \pm 0.0121
Std Dev: 0.4290 \pm 0.0121	Std Dev: 0.5290 \pm 0.0055	Std Dev: 0.4815 \pm 0.0086



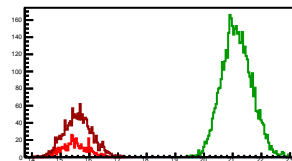
Cycle 14, Sums

Entries: 1579	Entries: 4585	Entries: 559
Mean: 15.9937 \pm 0.0110	Mean: 21.3051 \pm 0.0078	Mean: 15.5770 \pm 0.0197
Std Dev: 0.5125 \pm 0.0091	Std Dev: 0.5255 \pm 0.0055	Std Dev: 0.4647 \pm 0.0139



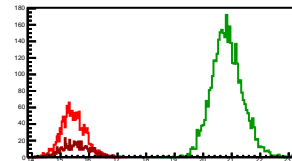
Cycle 15, Sums

Entries: 562	Entries: 4575	Entries: 1598
Mean: 15.4988 \pm 0.0190	Mean: 21.1440 \pm 0.0077	Mean: 15.6069 \pm 0.0122
Std Dev: 0.4513 \pm 0.0135	Std Dev: 0.5226 \pm 0.0055	Std Dev: 0.4883 \pm 0.0086



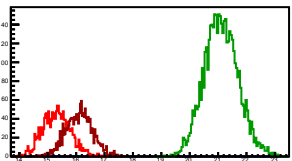
Cycle 16, Sums

Entries: 1596	Entries: 3647	Entries: 599
Mean: 15.4353 \pm 0.0104	Mean: 20.8350 \pm 0.0089	Mean: 15.5618 \pm 0.0196
Std Dev: 0.4141 \pm 0.0073	Std Dev: 0.5369 \pm 0.0063	Std Dev: 0.4808 \pm 0.0139



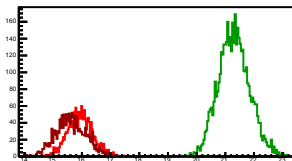
Cycle 17, Sums

Entries: 1673	Entries: 4610	Entries: 1605
Mean: 15.3103 \pm 0.0118	Mean: 21.1112 \pm 0.0088	Mean: 16.1162 \pm 0.0118
Std Dev: 0.4826 \pm 0.0083	Std Dev: 0.6006 \pm 0.0053	Std Dev: 0.4709 \pm 0.0083



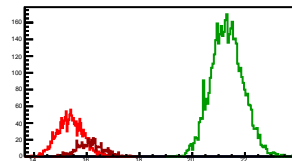
Cycle 18, Sums

Entries: 1596	Entries: 4602	Entries: 1656
Mean: 15.9493 \pm 0.0110	Mean: 21.3051 \pm 0.0080	Mean: 15.6151 \pm 0.0128
Std Dev: 0.4386 \pm 0.0079	Std Dev: 0.5426 \pm 0.0057	Std Dev: 0.5207 \pm 0.0090



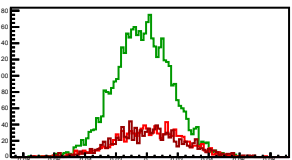
Cycle 19, Sums

Entries: 1643	Entries: 4616	Entries: 587
Mean: 15.3743 \pm 0.0119	Mean: 21.3230 \pm 0.0089	Mean: 16.1358 \pm 0.0199
Std Dev: 0.4820 \pm 0.0084	Std Dev: 0.6027 \pm 0.0053	Std Dev: 0.4824 \pm 0.0141



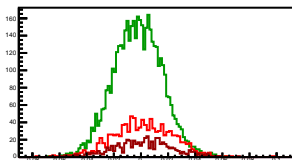
Cycle 1, Asyms

Entries: 1058	Entries: 4571	Entries: 1075
Mean: 0.0022 +/- 0.0007	Mean: -0.0026 +/- 0.0003	Mean: 0.0017 +/- 0.0007
Std Dev: 0.0221 +/- 0.0005	Std Dev: 0.0185 +/- 0.0002	Std Dev: 0.0230 +/- 0.0005



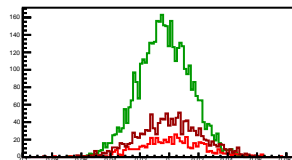
Cycle 2, Asyms

Entries: 1063	Entries: 4633	Entries: 579
Mean: 0.0014 +/- 0.0007	Mean: -0.0023 +/- 0.0003	Mean: 0.0016 +/- 0.0009
Std Dev: 0.0220 +/- 0.0005	Std Dev: 0.0178 +/- 0.0002	Std Dev: 0.0217 +/- 0.0006



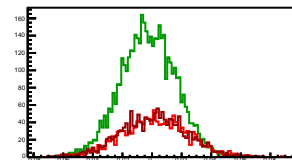
Cycle 3, Asyms

Entries: 577	Entries: 4175	Entries: 1302
Mean: 0.0015 +/- 0.0009	Mean: -0.0032 +/- 0.0003	Mean: 0.0008 +/- 0.0006
Std Dev: 0.0219 +/- 0.0006	Std Dev: 0.0177 +/- 0.0002	Std Dev: 0.0217 +/- 0.0004



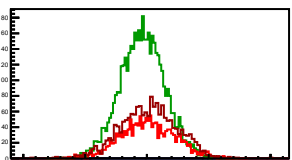
Cycle 4, Asyms

Entries: 1303	Entries: 4632	Entries: 1609
Mean: 0.0020 +/- 0.0006	Mean: -0.0025 +/- 0.0003	Mean: 0.0014 +/- 0.0005
Std Dev: 0.0226 +/- 0.0004	Std Dev: 0.0184 +/- 0.0002	Std Dev: 0.0219 +/- 0.0004



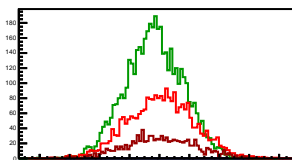
Cycle 5, Asyms

Entries: 1600	Entries: 4648	Entries: 1677
Mean: 0.0010 +/- 0.0006	Mean: -0.0034 +/- 0.0003	Mean: 0.0014 +/- 0.0006
Std Dev: 0.0220 +/- 0.0004	Std Dev: 0.0189 +/- 0.0002	Std Dev: 0.0228 +/- 0.0004



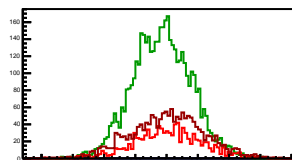
Cycle 6, Asyms

Entries: 2549	Entries: 4600	Entries: 1010
Mean: 0.0011 +/- 0.0004	Mean: -0.0035 +/- 0.0003	Mean: 0.0007 +/- 0.0007
Std Dev: 0.0224 +/- 0.0003	Std Dev: 0.0191 +/- 0.0002	Std Dev: 0.0229 +/- 0.0005



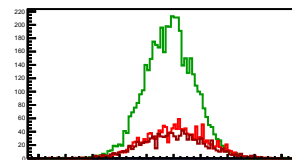
Cycle 7, Asyms

Entries: 1018	Entries: 4591	Entries: 1654
Mean: 0.0010 +/- 0.0007	Mean: -0.0029 +/- 0.0003	Mean: 0.0007 +/- 0.0006
Std Dev: 0.0224 +/- 0.0005	Std Dev: 0.0187 +/- 0.0002	Std Dev: 0.0232 +/- 0.0004



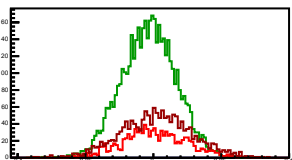
Cycle 8, Asyms

Entries: 1623	Entries: 4610	Entries: 1086
Mean: 0.0014 +/- 0.0006	Mean: -0.0030 +/- 0.0003	Mean: 0.0000 +/- 0.0007
Std Dev: 0.0226 +/- 0.0004	Std Dev: 0.0182 +/- 0.0002	Std Dev: 0.0240 +/- 0.0005



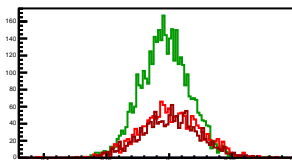
Cycle 9, Asyms

Entries: 1062	Entries: 4676	Entries: 1587
Mean: 0.0007 +/- 0.0007	Mean: -0.0034 +/- 0.0003	Mean: 0.0021 +/- 0.0007
Std Dev: 0.0234 +/- 0.0005	Std Dev: 0.0199 +/- 0.0002	Std Dev: 0.0262 +/- 0.0005



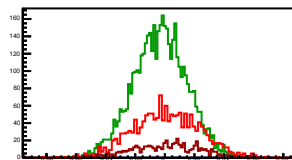
Cycle 10, Asyms

Entries: 1582	Entries: 4569	Entries: 1442
Mean: 0.0009 +/- 0.0006	Mean: -0.0032 +/- 0.0003	Mean: 0.0008 +/- 0.0006
Std Dev: 0.0238 +/- 0.0004	Std Dev: 0.0194 +/- 0.0002	Std Dev: 0.0232 +/- 0.0004



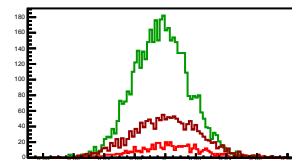
Cycle 11, Asyms

Entries: 1605	Entries: 4699	Entries: 580
Mean: 0.0010 +/- 0.0006	Mean: -0.0033 +/- 0.0003	Mean: 0.0009 +/- 0.0009
Std Dev: 0.0224 +/- 0.0004	Std Dev: 0.0180 +/- 0.0002	Std Dev: 0.0221 +/- 0.0006



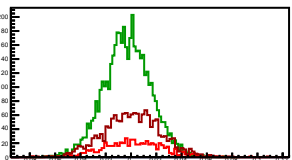
Cycle 12, Asyms

Entries: 577	Entries: 4692	Entries: 1591
Mean: 0.0026 +/- 0.0009	Mean: -0.0027 +/- 0.0003	Mean: 0.0005 +/- 0.0006
Std Dev: 0.0221 +/- 0.0004	Std Dev: 0.0182 +/- 0.0002	Std Dev: 0.0222 +/- 0.0004



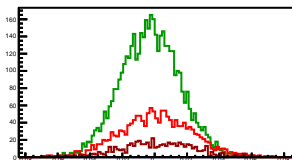
Cycle 13, Asyms

Entries: 626	Entries: 4680	Entries: 1578
Mean: 0.0015 +/- 0.0009	Mean: -0.0029 +/- 0.0003	Mean: 0.0010 +/- 0.0006
Std Dev: 0.0231 +/- 0.0007	Std Dev: 0.0184 +/- 0.0002	Std Dev: 0.0225 +/- 0.0004



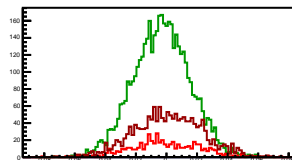
Cycle 14, Asyms

Entries: 1579	Entries: 4585	Entries: 559
Mean: 0.0009 +/- 0.0006	Mean: -0.0028 +/- 0.0003	Mean: 0.0014 +/- 0.0010
Std Dev: 0.0220 +/- 0.0004	Std Dev: 0.0182 +/- 0.0002	Std Dev: 0.0227 +/- 0.0007



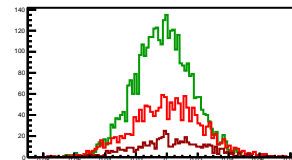
Cycle 15, Asyms

Entries: 562	Entries: 4575	Entries: 1598
Mean: -0.0007 +/- 0.0009	Mean: -0.0031 +/- 0.0003	Mean: 0.0009 +/- 0.0006
Std Dev: 0.0221 +/- 0.0007	Std Dev: 0.0185 +/- 0.0002	Std Dev: 0.0221 +/- 0.0004



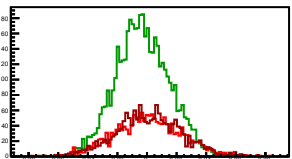
Cycle 16, Asyms

Entries: 1596	Entries: 3647	Entries: 599
Mean: 0.0005 +/- 0.0006	Mean: -0.0025 +/- 0.0003	Mean: 0.0018 +/- 0.0009
Std Dev: 0.0230 +/- 0.0004	Std Dev: 0.0185 +/- 0.0002	Std Dev: 0.0222 +/- 0.0006



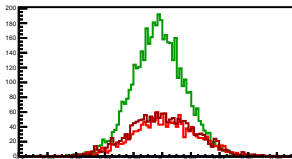
Cycle 17, Asyms

Entries: 1673	Entries: 4610	Entries: 1605
Mean: 0.0011 +/- 0.0006	Mean: -0.0030 +/- 0.0003	Mean: 0.0009 +/- 0.0006
Std Dev: 0.0230 +/- 0.0004	Std Dev: 0.0182 +/- 0.0002	Std Dev: 0.0222 +/- 0.0004



Cycle 18, Asyms

Entries: 1596	Entries: 4602	Entries: 1656
Mean: 0.0016 +/- 0.0006	Mean: -0.0023 +/- 0.0003	Mean: 0.0004 +/- 0.0006
Std Dev: 0.0225 +/- 0.0004	Std Dev: 0.0182 +/- 0.0002	Std Dev: 0.0231 +/- 0.0004



Cycle 19, Asyms

Entries: 1643	Entries: 4616	Entries: 587
Mean: 0.0016 +/- 0.0006	Mean: -0.0031 +/- 0.0003	Mean: 0.0008 +/- 0.0009
Std Dev: 0.0225 +/- 0.0004	Std Dev: 0.0182 +/- 0.0002	Std Dev: 0.0210 +/- 0.0006

