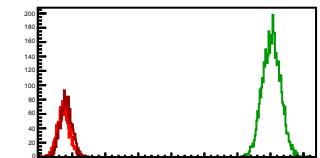


Cycle 1, PosHel

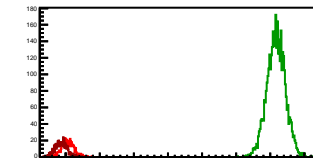
Entries: 2002	Entries: 4768	Entries: 2311
Mean: 6.7370 \pm 0.0041	Mean: 13.0317 \pm 0.0039	Mean: 6.8114 \pm 0.0038
Std Dev: 0.1816 \pm 0.0029	Std Dev: 0.2717 \pm 0.0028	Std Dev: 0.1806 \pm 0.0027

**Cycle 2, PosHel**

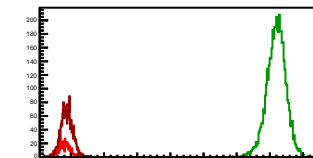
Entries: 1409	Entries: 4802	Entries: 575
Mean: 6.7860 \pm 0.0049	Mean: 13.2048 \pm 0.0040	Mean: 6.9909 \pm 0.0075
Std Dev: 0.1821 \pm 0.0034	Std Dev: 0.2740 \pm 0.0028	Std Dev: 0.1790 \pm 0.0053

**Cycle 3, PosHel**

Entries: 577	Entries: 3871	Entries: 596
Mean: 7.0583 \pm 0.0076	Mean: 13.1731 \pm 0.0043	Mean: 6.8627 \pm 0.0071
Std Dev: 0.1821 \pm 0.0054	Std Dev: 0.2706 \pm 0.0031	Std Dev: 0.1744 \pm 0.0051

**Cycle 4, PosHel**

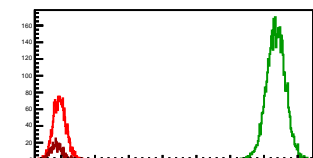
Entries: 592	Entries: 4777	Entries: 2204
Mean: 6.8004 \pm 0.0077	Mean: 13.1946 \pm 0.0041	Mean: 6.8767 \pm 0.0037
Std Dev: 0.1862 \pm 0.0054	Std Dev: 0.2844 \pm 0.0029	Std Dev: 0.1715 \pm 0.0026

**Cycle 5, PosHel**

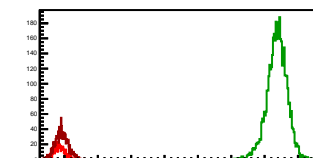
Entries: 2160	Entries: 3649	Entries: 2287
Mean: 6.9370 \pm 0.0040	Mean: 13.3742 \pm 0.0047	Mean: 6.9168 \pm 0.0042
Std Dev: 0.1853 \pm 0.0029	Std Dev: 0.2829 \pm 0.0033	Std Dev: 0.2028 \pm 0.0030

**Cycle 6, PosHel**

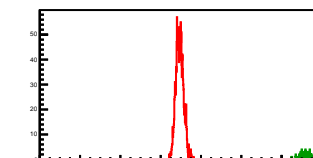
Entries: 2238	Entries: 4734	Entries: 593
Mean: 6.9539 \pm 0.0039	Mean: 13.3549 \pm 0.0040	Mean: 6.8525 \pm 0.0069
Std Dev: 0.1861 \pm 0.0028	Std Dev: 0.2769 \pm 0.0028	Std Dev: 0.1680 \pm 0.0049

**Cycle 7, PosHel**

Entries: 590	Entries: 4405	Entries: 1187
Mean: 6.8392 \pm 0.0068	Mean: 13.3710 \pm 0.0045	Mean: 6.9142 \pm 0.0056
Std Dev: 0.1646 \pm 0.0048	Std Dev: 0.2969 \pm 0.0032	Std Dev: 0.1917 \pm 0.0039

**Cycle 8, PosHel**

Entries: 1673	Entries: 79	Entries: 0
Mean: 6.9433 \pm 0.0046	Mean: 13.1940 \pm 0.0297	Mean: 0.0000 \pm 0.0000
Std Dev: 0.1865 \pm 0.0032	Std Dev: 0.2642 \pm 0.0210	Std Dev: 0.0000 \pm 0.0000

**Cycle 9, PosHel**

Entries: 0	Entries: 0	Entries: 0
Mean: 0.0000 \pm 0.0000	Mean: 0.0000 \pm 0.0000	Mean: 0.0000 \pm 0.0000
Std Dev: 0.0000 \pm 0.0000	Std Dev: 0.0000 \pm 0.0000	Std Dev: 0.0000 \pm 0.0000

**Cycle 10, PosHel**

Entries: 0	Entries: 0	Entries: 0
Mean: 0.0000 \pm 0.0000	Mean: 0.0000 \pm 0.0000	Mean: 0.0000 \pm 0.0000
Std Dev: 0.0000 \pm 0.0000	Std Dev: 0.0000 \pm 0.0000	Std Dev: 0.0000 \pm 0.0000

**Cycle 11, PosHel**

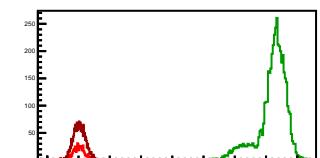
Entries: 0	Entries: 0	Entries: 0
Mean: 0.0000 \pm 0.0000	Mean: 0.0000 \pm 0.0000	Mean: 0.0000 \pm 0.0000
Std Dev: 0.0000 \pm 0.0000	Std Dev: 0.0000 \pm 0.0000	Std Dev: 0.0000 \pm 0.0000

**Cycle 12, PosHel**

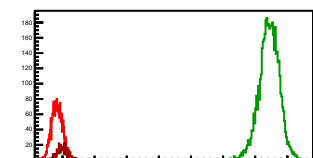
Entries: 1612	Entries: 4737	Entries: 569
Mean: 6.8959 \pm 0.0043	Mean: 13.3442 \pm 0.0052	Mean: 7.0910 \pm 0.0072
Std Dev: 0.1728 \pm 0.0030	Std Dev: 0.3586 \pm 0.0037	Std Dev: 0.1714 \pm 0.0051

**Cycle 13, PosHel**

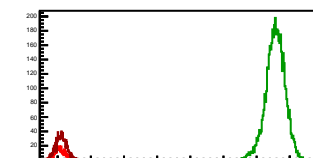
Entries: 571	Entries: 4789	Entries: 2321
Mean: 7.0007 \pm 0.0052	Mean: 13.6756 \pm 0.0043	Mean: 7.0315 \pm 0.0040
Std Dev: 0.2090 \pm 0.0062	Std Dev: 0.4694 \pm 0.0048	Std Dev: 0.1933 \pm 0.0028

**Cycle 14, PosHel**

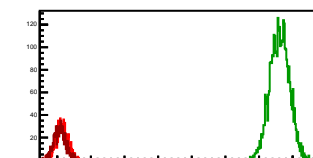
Entries: 2284	Entries: 4763	Entries: 571
Mean: 6.8378 \pm 0.0037	Mean: 13.4339 \pm 0.0045	Mean: 6.9938 \pm 0.0068
Std Dev: 0.1785 \pm 0.0026	Std Dev: 0.3130 \pm 0.0032	Std Dev: 0.1634 \pm 0.0048

**Cycle 15, PosHel**

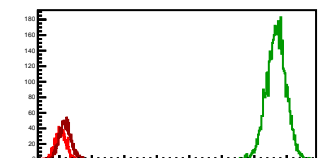
Entries: 572	Entries: 4821	Entries: 1073
Mean: 7.0824 \pm 0.0070	Mean: 13.5661 \pm 0.0042	Mean: 7.1006 \pm 0.0051
Std Dev: 0.1685 \pm 0.0050	Std Dev: 0.2896 \pm 0.0029	Std Dev: 0.1664 \pm 0.0036

**Cycle 16, PosHel**

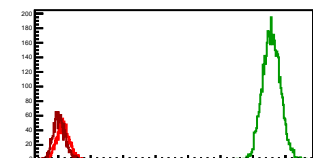
Entries: 1067	Entries: 3585	Entries: 1089
Mean: 6.7424 \pm 0.0054	Mean: 13.6109 \pm 0.0048	Mean: 7.0735 \pm 0.0053
Std Dev: 0.1755 \pm 0.0038	Std Dev: 0.2879 \pm 0.0034	Std Dev: 0.1746 \pm 0.0037

**Cycle 17, PosHel**

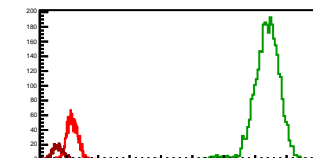
Entries: 1075	Entries: 4820	Entries: 1683
Mean: 7.0473 \pm 0.0052	Mean: 13.6756 \pm 0.0043	Mean: 7.1793 \pm 0.0044
Std Dev: 0.1707 \pm 0.0037	Std Dev: 0.2995 \pm 0.0030	Std Dev: 0.1785 \pm 0.0031

**Cycle 18, PosHel**

Entries: 1653	Entries: 4784	Entries: 1716
Mean: 7.1434 \pm 0.0046	Mean: 13.5696 \pm 0.0039	Mean: 7.0336 \pm 0.0044
Std Dev: 0.1892 \pm 0.0033	Std Dev: 0.2692 \pm 0.0028	Std Dev: 0.1825 \pm 0.0031

**Cycle 19, PosHel**

Entries: 1680	Entries: 3179	Entries: 657
Mean: 7.1795 \pm 0.0042	Mean: 13.3702 \pm 0.0073	Mean: 6.7167 \pm 0.0065
Std Dev: 0.1719 \pm 0.0030	Std Dev: 0.4140 \pm 0.0052	Std Dev: 0.1678 \pm 0.0046

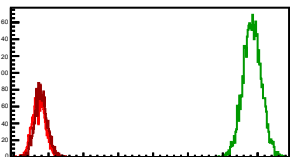
**Cycle 20, PosHel**

Entries: 677	Entries: 4773	Entries: 1108
Mean: 6.7424 \pm 0.0067	Mean: 13.3119 \pm 0.0050	Mean: 6.9159 \pm 0.0053
Std Dev: 0.1753 \pm 0.0048	Std Dev: 0.3438 \pm 0.0035	Std Dev: 0.1753 \pm 0.0037

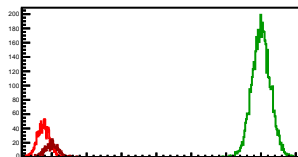


Cycle 1, NegHel

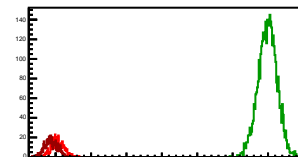
Entries: 2002	Entries: 4768	Entries: 2311
Mean: 6.7276 +/- 0.0041	Mean: 12.8427 +/- 0.0038	Mean: 6.7883 +/- 0.0037
Std Dev: 0.1850 +/- 0.0029	Std Dev: 0.2616 +/- 0.0027	Std Dev: 0.1795 +/- 0.0026

**Cycle 2, NegHel**

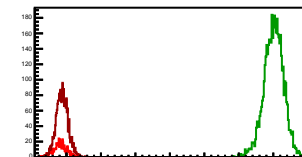
Entries: 1409	Entries: 4802	Entries: 575
Mean: 6.7651 +/- 0.0046	Mean: 13.0067 +/- 0.0038	Mean: 6.9950 +/- 0.0076
Std Dev: 0.1723 +/- 0.0032	Std Dev: 0.2649 +/- 0.0027	Std Dev: 0.1824 +/- 0.0054

**Cycle 3, NegHel**

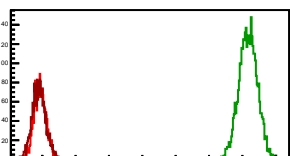
Entries: 577	Entries: 3871	Entries: 596
Mean: 7.0507 +/- 0.0074	Mean: 12.9880 +/- 0.0043	Mean: 6.8679 +/- 0.0073
Std Dev: 0.1785 +/- 0.0053	Std Dev: 0.2695 +/- 0.0031	Std Dev: 0.1781 +/- 0.0052

**Cycle 4, NegHel**

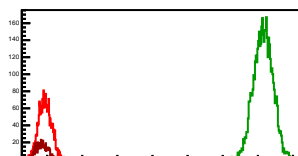
Entries: 592	Entries: 4777	Entries: 2204
Mean: 6.8106 +/- 0.0077	Mean: 13.0134 +/- 0.0041	Mean: 6.8756 +/- 0.0037
Std Dev: 0.1879 +/- 0.0055	Std Dev: 0.2827 +/- 0.0029	Std Dev: 0.1718 +/- 0.0026

**Cycle 5, NegHel**

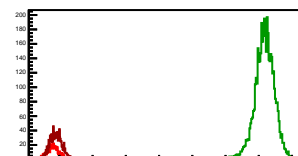
Entries: 2160	Entries: 3649	Entries: 2287
Mean: 6.9353 +/- 0.0038	Mean: 13.1736 +/- 0.0046	Mean: 6.9026 +/- 0.0042
Std Dev: 0.1780 +/- 0.0027	Std Dev: 0.2771 +/- 0.0032	Std Dev: 0.2006 +/- 0.0030

**Cycle 6, NegHel**

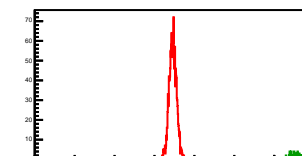
Entries: 2238	Entries: 4734	Entries: 593
Mean: 6.9402 +/- 0.0039	Mean: 13.1520 +/- 0.0040	Mean: 6.8574 +/- 0.0069
Std Dev: 0.1868 +/- 0.0028	Std Dev: 0.2741 +/- 0.0028	Std Dev: 0.1692 +/- 0.0049

**Cycle 7, NegHel**

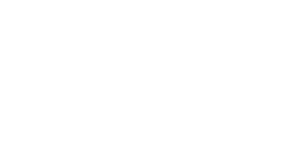
Entries: 590	Entries: 4405	Entries: 1187
Mean: 6.8124 +/- 0.0072	Mean: 13.1771 +/- 0.0044	Mean: 6.8943 +/- 0.0053
Std Dev: 0.1754 +/- 0.0051	Std Dev: 0.2892 +/- 0.0031	Std Dev: 0.1822 +/- 0.0037

**Cycle 8, NegHel**

Entries: 1673	Entries: 79	Entries: 0
Mean: 6.9220 +/- 0.0045	Mean: 12.9862 +/- 0.0299	Mean: 0.0000 +/- 0.0000
Std Dev: 0.1837 +/- 0.0032	Std Dev: 0.2861 +/- 0.0212	Std Dev: 0.0000 +/- 0.0000

**Cycle 9, NegHel**

Entries: 0	Entries: 0	Entries: 0
Mean: 0.0000 +/- 0.0000	Mean: 0.0000 +/- 0.0000	Mean: 0.0000 +/- 0.0000
Std Dev: 0.0000 +/- 0.0000	Std Dev: 0.0000 +/- 0.0000	Std Dev: 0.0000 +/- 0.0000

**Cycle 10, NegHel**

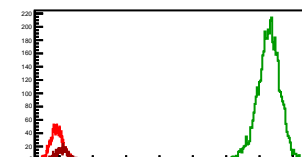
Entries: 0	Entries: 0	Entries: 0
Mean: 0.0000 +/- 0.0000	Mean: 0.0000 +/- 0.0000	Mean: 0.0000 +/- 0.0000
Std Dev: 0.0000 +/- 0.0000	Std Dev: 0.0000 +/- 0.0000	Std Dev: 0.0000 +/- 0.0000

**Cycle 11, NegHel**

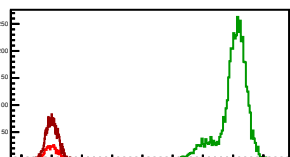
Entries: 0	Entries: 0	Entries: 0
Mean: 0.0000 +/- 0.0000	Mean: 0.0000 +/- 0.0000	Mean: 0.0000 +/- 0.0000
Std Dev: 0.0000 +/- 0.0000	Std Dev: 0.0000 +/- 0.0000	Std Dev: 0.0000 +/- 0.0000

**Cycle 12, NegHel**

Entries: 1612	Entries: 4737	Entries: 569
Mean: 6.9205 +/- 0.0045	Mean: 13.2724 +/- 0.0049	Mean: 7.0730 +/- 0.0074
Std Dev: 0.1824 +/- 0.0032	Std Dev: 0.3359 +/- 0.0035	Std Dev: 0.1758 +/- 0.0052

**Cycle 13, NegHel**

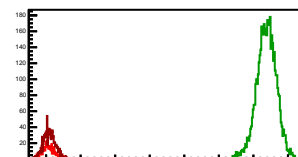
Entries: 571	Entries: 4789	Entries: 2321
Mean: 6.9906 +/- 0.0068	Mean: 13.0065 +/- 0.0067	Mean: 7.0153 +/- 0.0040
Std Dev: 0.2108 +/- 0.0062	Std Dev: 0.4647 +/- 0.0047	Std Dev: 0.1936 +/- 0.0028

**Cycle 14, NegHel**

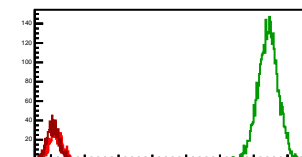
Entries: 2284	Entries: 4763	Entries: 571
Mean: 6.8350 +/- 0.0037	Mean: 13.2375 +/- 0.0044	Mean: 6.9711 +/- 0.0072
Std Dev: 0.1767 +/- 0.0026	Std Dev: 0.3070 +/- 0.0031	Std Dev: 0.1717 +/- 0.0051

**Cycle 15, NegHel**

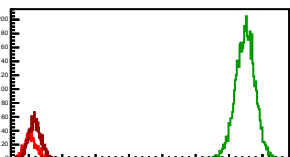
Entries: 572	Entries: 4821	Entries: 1073
Mean: 7.0719 +/- 0.0042	Mean: 13.3782 +/- 0.0041	Mean: 7.0956 +/- 0.0053
Std Dev: 0.1746 +/- 0.0052	Std Dev: 0.2862 +/- 0.0029	Std Dev: 0.1736 +/- 0.0037

**Cycle 16, NegHel**

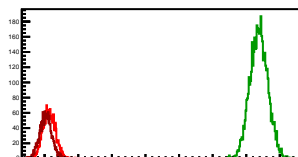
Entries: 1067	Entries: 3585	Entries: 1089
Mean: 7.1500 +/- 0.0054	Mean: 13.4241 +/- 0.0049	Mean: 7.0614 +/- 0.0052
Std Dev: 0.1755 +/- 0.0038	Std Dev: 0.2922 +/- 0.0035	Std Dev: 0.1714 +/- 0.0037

**Cycle 17, NegHel**

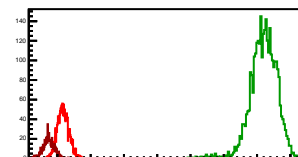
Entries: 1075	Entries: 4820	Entries: 1683
Mean: 7.0516 +/- 0.0055	Mean: 13.4870 +/- 0.0042	Mean: 7.1747 +/- 0.0043
Std Dev: 0.1798 +/- 0.0039	Std Dev: 0.2292 +/- 0.0030	Std Dev: 0.1781 +/- 0.0031

**Cycle 18, NegHel**

Entries: 1653	Entries: 4784	Entries: 1716
Mean: 7.1332 +/- 0.0046	Mean: 13.3766 +/- 0.0039	Mean: 7.0301 +/- 0.0043
Std Dev: 0.1860 +/- 0.0032	Std Dev: 0.2665 +/- 0.0027	Std Dev: 0.1771 +/- 0.0030

**Cycle 19, NegHel**

Entries: 1680	Entries: 3179	Entries: 657
Mean: 7.1727 +/- 0.0042	Mean: 13.1900 +/- 0.0072	Mean: 6.7356 +/- 0.0066
Std Dev: 0.1732 +/- 0.0030	Std Dev: 0.4073 +/- 0.0051	Std Dev: 0.1700 +/- 0.0047

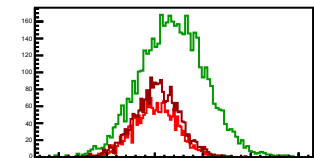
**Cycle 20, NegHel**

Entries: 677	Entries: 4773	Entries: 1108
Mean: 6.7328 +/- 0.0067	Mean: 13.1208 +/- 0.0049	Mean: 6.9185 +/- 0.0054
Std Dev: 0.1737 +/- 0.0047	Std Dev: 0.3399 +/- 0.0035	Std Dev: 0.1784 +/- 0.0038



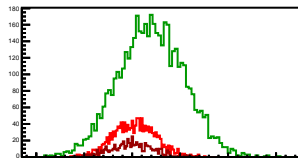
Cycle 1, Diffs

Entries: 2002	Entries: 4768	Entries: 2311
Mean: 0.0097 +/- 0.0050	Mean: 0.1890 +/- 0.0049	Mean: 0.0230 +/- 0.0048
Std Dev: 0.2239 +/- 0.0035	Std Dev: 0.3392 +/- 0.0035	Std Dev: 0.2305 +/- 0.0034



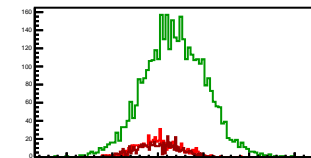
Cycle 2, Diffs

Entries: 1409	Entries: 4802	Entries: 575
Mean: 0.0209 +/- 0.0060	Mean: 0.1982 +/- 0.0049	Mean: -0.0040 +/- 0.0092
Std Dev: 0.2235 +/- 0.0042	Std Dev: 0.3413 +/- 0.0035	Std Dev: 0.2212 +/- 0.0065



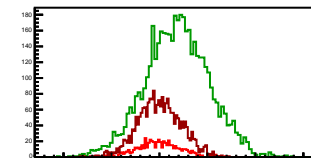
Cycle 3, Diffs

Entries: 577	Entries: 3871	Entries: 596
Mean: 0.0077 +/- 0.0096	Mean: 0.1851 +/- 0.0054	Mean: -0.0051 +/- 0.0096
Std Dev: 0.2294 +/- 0.0068	Std Dev: 0.3344 +/- 0.0038	Std Dev: 0.2345 +/- 0.0068



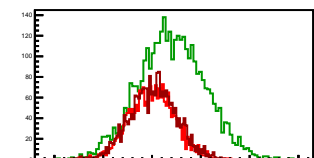
Cycle 4, Diffs

Entries: 592	Entries: 4777	Entries: 2204
Mean: -0.0102 +/- 0.0092	Mean: 0.1812 +/- 0.0048	Mean: 0.0011 +/- 0.0048
Std Dev: 0.2227 +/- 0.0065	Std Dev: 0.3315 +/- 0.0034	Std Dev: 0.2238 +/- 0.0034



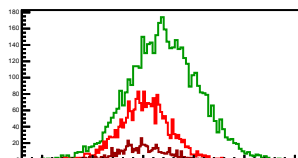
Cycle 5, Diffs

Entries: 2160	Entries: 3649	Entries: 2287
Mean: 0.0016 +/- 0.0049	Mean: 0.2007 +/- 0.0056	Mean: 0.0141 +/- 0.0050
Std Dev: 0.2279 +/- 0.0035	Std Dev: 0.3391 +/- 0.0040	Std Dev: 0.2387 +/- 0.0035



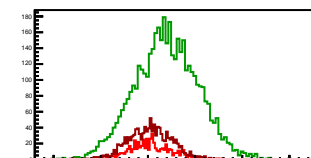
Cycle 6, Diffs

Entries: 2238	Entries: 4734	Entries: 593
Mean: 0.0137 +/- 0.0051	Mean: 0.2028 +/- 0.0049	Mean: -0.0049 +/- 0.0089
Std Dev: 0.2402 +/- 0.0036	Std Dev: 0.3401 +/- 0.0035	Std Dev: 0.2179 +/- 0.0063



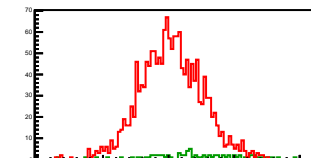
Cycle 7, Diffs

Entries: 590	Entries: 4405	Entries: 1187
Mean: 0.0268 +/- 0.0092	Mean: 0.1939 +/- 0.0050	Mean: 0.0200 +/- 0.0067
Std Dev: 0.2243 +/- 0.0065	Std Dev: 0.3338 +/- 0.0036	Std Dev: 0.2301 +/- 0.0047



Cycle 8, Diffs

Entries: 1673	Entries: 79	Entries: 0
Mean: 0.0212 +/- 0.0058	Mean: 0.2078 +/- 0.0036	Mean: 0.0000 +/- 0.0000
Std Dev: 0.2353 +/- 0.0041	Std Dev: 0.3519 +/- 0.0280	Std Dev: 0.0000 +/- 0.0000



Cycle 9, Diffs

Entries: 0	Entries: 0	Entries: 0
Mean: 0.0000 +/- 0.0000	Mean: 0.0000 +/- 0.0000	Mean: 0.0000 +/- 0.0000
Std Dev: 0.0000 +/- 0.0000	Std Dev: 0.0000 +/- 0.0000	Std Dev: 0.0000 +/- 0.0000



Cycle 10, Diffs

Entries: 0	Entries: 0	Entries: 0
Mean: 0.0000 +/- 0.0000	Mean: 0.0000 +/- 0.0000	Mean: 0.0000 +/- 0.0000
Std Dev: 0.0000 +/- 0.0000	Std Dev: 0.0000 +/- 0.0000	Std Dev: 0.0000 +/- 0.0000



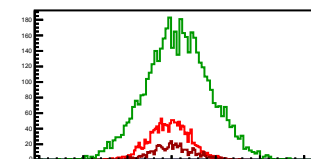
Cycle 11, Diffs

Entries: 0	Entries: 0	Entries: 0
Mean: 0.0000 +/- 0.0000	Mean: 0.0000 +/- 0.0000	Mean: 0.0000 +/- 0.0000
Std Dev: 0.0000 +/- 0.0000	Std Dev: 0.0000 +/- 0.0000	Std Dev: 0.0000 +/- 0.0000



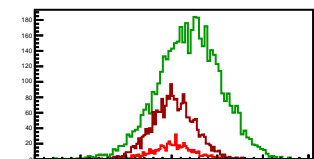
Cycle 12, Diffs

Entries: 1612	Entries: 4727	Entries: 569
Mean: -0.0246 +/- 0.0055	Mean: 0.0718 +/- 0.0053	Mean: 0.0180 +/- 0.0096
Std Dev: 0.2211 +/- 0.0039	Std Dev: 0.3630 +/- 0.0037	Std Dev: 0.2291 +/- 0.0068



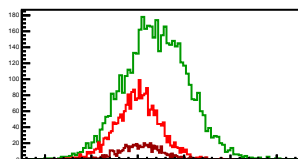
Cycle 13, Diffs

Entries: 571	Entries: 4789	Entries: 2321
Mean: -0.0101 +/- 0.0064	Mean: 0.1937 +/- 0.0050	Mean: 0.0163 +/- 0.0048
Std Dev: 0.2258 +/- 0.0067	Std Dev: 0.3458 +/- 0.0035	Std Dev: 0.2315 +/- 0.0034



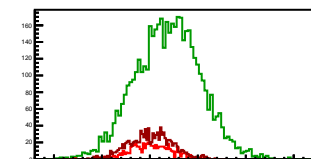
Cycle 14, Diffs

Entries: 2284	Entries: 4763	Entries: 571
Mean: 0.0102 +/- 0.0048	Mean: 0.1964 +/- 0.0049	Mean: 0.0226 +/- 0.0093
Std Dev: 0.2313 +/- 0.0034	Std Dev: 0.3409 +/- 0.0035	Std Dev: 0.2227 +/- 0.0066



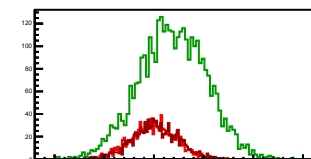
Cycle 15, Diffs

Entries: 572	Entries: 4821	Entries: 1073
Mean: 0.0105 +/- 0.0069	Mean: 0.1879 +/- 0.0049	Mean: 0.0050 +/- 0.0069
Std Dev: 0.2122 +/- 0.0063	Std Dev: 0.3373 +/- 0.0034	Std Dev: 0.2247 +/- 0.0049



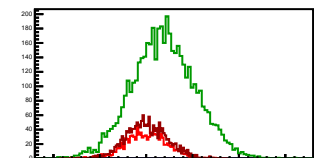
Cycle 16, Diffs

Entries: 1067	Entries: 3585	Entries: 1089
Mean: -0.0058 +/- 0.0069	Mean: 0.1868 +/- 0.0056	Mean: 0.0121 +/- 0.0069
Std Dev: 0.2241 +/- 0.0049	Std Dev: 0.3368 +/- 0.0040	Std Dev: 0.2271 +/- 0.0049



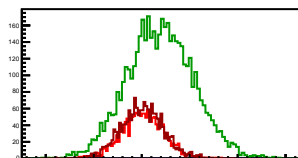
Cycle 17, Diffs

Entries: 1075	Entries: 4820	Entries: 1683
Mean: -0.0043 +/- 0.0067	Mean: 0.1886 +/- 0.0049	Mean: 0.0045 +/- 0.0054
Std Dev: 0.2205 +/- 0.0048	Std Dev: 0.3399 +/- 0.0035	Std Dev: 0.2206 +/- 0.0039



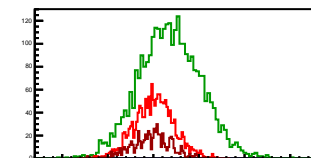
Cycle 18, Diffs

Entries: 1653	Entries: 4784	Entries: 1716
Mean: 0.0102 +/- 0.0054	Mean: 0.1929 +/- 0.0050	Mean: 0.0035 +/- 0.0053
Std Dev: 0.2187 +/- 0.0038	Std Dev: 0.3443 +/- 0.0035	Std Dev: 0.2198 +/- 0.0038



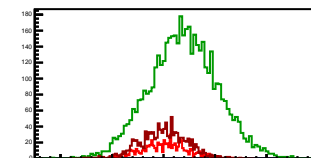
Cycle 19, Diffs

Entries: 1680	Entries: 3179	Entries: 657
Mean: 0.0068 +/- 0.0053	Mean: 0.1793 +/- 0.0060	Mean: -0.0189 +/- 0.0082
Std Dev: 0.2180 +/- 0.0038	Std Dev: 0.3376 +/- 0.0042	Std Dev: 0.2105 +/- 0.0059



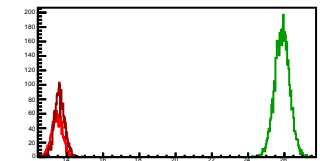
Cycle 20, Diffs

Entries: 677	Entries: 4773	Entries: 1108
Mean: 0.0095 +/- 0.0084	Mean: 0.1912 +/- 0.0048	Mean: -0.0026 +/- 0.0068
Std Dev: 0.2196 +/- 0.0060	Std Dev: 0.3283 +/- 0.0034	Std Dev: 0.2258 +/- 0.0048



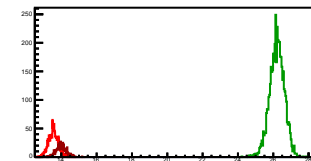
Cycle 1, Sums

Entries: 2002	Entries: 4768	Entries: 2311
Mean: 13.4648 +/- 0.0065	Mean: 25.8743 +/- 0.0060	Mean: 13.5997 +/- 0.0058
Std Dev: 0.2904 +/- 0.0046	Std Dev: 0.4116 +/- 0.0042	Std Dev: 0.2767 +/- 0.0041



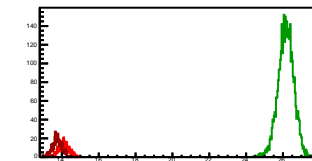
Cycle 2, Sums

Entries: 1409	Entries: 4802	Entries: 575
Mean: 13.5512 +/- 0.0073	Mean: 26.2115 +/- 0.0060	Mean: 13.9859 +/- 0.0119
Std Dev: 0.2753 +/- 0.0052	Std Dev: 0.4171 +/- 0.0043	Std Dev: 0.2858 +/- 0.0084



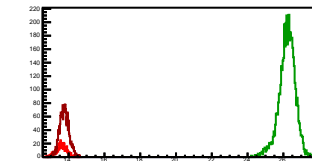
Cycle 3, Sums

Entries: 577	Entries: 3871	Entries: 596
Mean: 14.1090 +/- 0.0116	Mean: 26.1611 +/- 0.0068	Mean: 13.7306 +/- 0.0108
Std Dev: 0.2782 +/- 0.0082	Std Dev: 0.4241 +/- 0.0048	Std Dev: 0.2632 +/- 0.0076



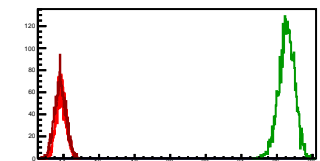
Cycle 4, Sums

Entries: 592	Entries: 4777	Entries: 2204
Mean: 13.6110 +/- 0.0124	Mean: 26.2080 +/- 0.0067	Mean: 13.7522 +/- 0.0055
Std Dev: 0.3006 +/- 0.0087	Std Dev: 0.4601 +/- 0.0047	Std Dev: 0.2603 +/- 0.0039



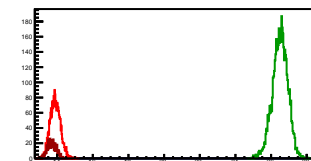
Cycle 5, Sums

Entries: 2160	Entries: 3649	Entries: 2287
Mean: 13.8723 +/- 0.0061	Mean: 26.5478 +/- 0.0074	Mean: 13.8194 +/- 0.0068
Std Dev: 0.2830 +/- 0.0043	Std Dev: 0.4457 +/- 0.0052	Std Dev: 0.3252 +/- 0.0048



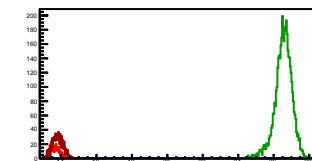
Cycle 6, Sums

Entries: 2238	Entries: 4734	Entries: 593
Mean: 13.8942 +/- 0.0060	Mean: 26.5069 +/- 0.0063	Mean: 13.7099 +/- 0.0106
Std Dev: 0.2853 +/- 0.0043	Std Dev: 0.4324 +/- 0.0044	Std Dev: 0.2573 +/- 0.0075



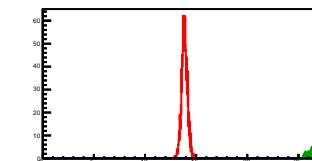
Cycle 7, Sums

Entries: 590	Entries: 4405	Entries: 1187
Mean: 13.6517 +/- 0.0105	Mean: 26.5481 +/- 0.0073	Mean: 13.8085 +/- 0.0086
Std Dev: 0.2557 +/- 0.0074	Std Dev: 0.4818 +/- 0.0051	Std Dev: 0.2349 +/- 0.0061



Cycle 8, Sums

Entries: 1673	Entries: 79	Entries: 0
Mean: 13.8653 +/- 0.0070	Mean: 26.1802 +/- 0.0446	Mean: 0.0000 +/- 0.0000
Std Dev: 0.2859 +/- 0.0049	Std Dev: 0.3967 +/- 0.0316	Std Dev: 0.0000 +/- 0.0000



Cycle 9, Sums

Entries: 0	Entries: 0	Entries: 0
Mean: 0.0000 +/- 0.0000	Mean: 0.0000 +/- 0.0000	Mean: 0.0000 +/- 0.0000
Std Dev: 0.0000 +/- 0.0000	Std Dev: 0.0000 +/- 0.0000	Std Dev: 0.0000 +/- 0.0000



Cycle 10, Sums

Entries: 0	Entries: 0	Entries: 0
Mean: 0.0000 +/- 0.0000	Mean: 0.0000 +/- 0.0000	Mean: 0.0000 +/- 0.0000
Std Dev: 0.0000 +/- 0.0000	Std Dev: 0.0000 +/- 0.0000	Std Dev: 0.0000 +/- 0.0000



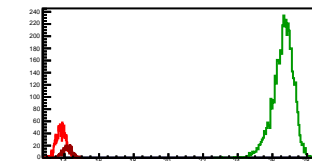
Cycle 11, Sums

Entries: 0	Entries: 0	Entries: 0
Mean: 0.0000 +/- 0.0000	Mean: 0.0000 +/- 0.0000	Mean: 0.0000 +/- 0.0000
Std Dev: 0.0000 +/- 0.0000	Std Dev: 0.0000 +/- 0.0000	Std Dev: 0.0000 +/- 0.0000



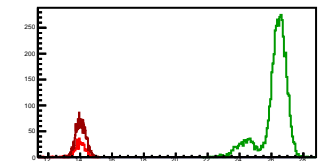
Cycle 12, Sums

Entries: 1612	Entries: 4737	Entries: 569
Mean: 13.8164 +/- 0.0069	Mean: 26.6165 +/- 0.0086	Mean: 14.1640 +/- 0.0109
Std Dev: 0.2781 +/- 0.0049	Std Dev: 0.5926 +/- 0.0061	Std Dev: 0.2609 +/- 0.0077



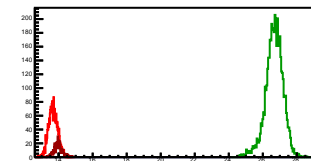
Cycle 13, Sums

Entries: 571	Entries: 4789	Entries: 2321
Mean: 13.9913 +/- 0.0148	Mean: 26.2067 +/- 0.0125	Mean: 14.0468 +/- 0.0064
Std Dev: 0.3539 +/- 0.0105	Std Dev: 0.8878 +/- 0.0089	Std Dev: 0.3100 +/- 0.0045



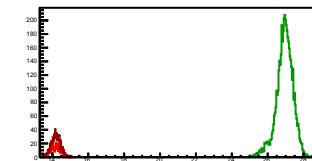
Cycle 14, Sums

Entries: 2284	Entries: 4763	Entries: 571
Mean: 13.6728 +/- 0.0056	Mean: 26.6714 +/- 0.0075	Mean: 13.9649 +/- 0.0105
Std Dev: 0.2696 +/- 0.0040	Std Dev: 0.5180 +/- 0.0053	Std Dev: 0.2506 +/- 0.0074



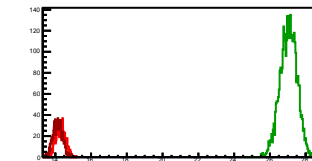
Cycle 15, Sums

Entries: 572	Entries: 4821	Entries: 1073
Mean: 14.1543 +/- 0.0113	Mean: 26.9443 +/- 0.0067	Mean: 14.1962 +/- 0.0078
Std Dev: 0.2697 +/- 0.0080	Std Dev: 0.4667 +/- 0.0048	Std Dev: 0.2553 +/- 0.0055



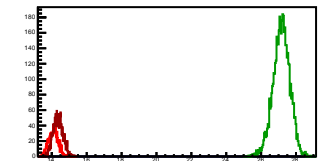
Cycle 16, Sums

Entries: 1067	Entries: 3585	Entries: 1089
Mean: 14.2942 +/- 0.0083	Mean: 27.0350 +/- 0.0079	Mean: 14.1349 +/- 0.0079
Std Dev: 0.2701 +/- 0.0058	Std Dev: 0.4723 +/- 0.0056	Std Dev: 0.2610 +/- 0.0056



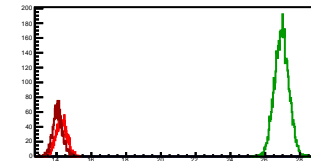
Cycle 17, Sums

Entries: 1075	Entries: 4820	Entries: 1683
Mean: 14.0988 +/- 0.0083	Mean: 27.1626 +/- 0.0069	Mean: 14.3540 +/- 0.0068
Std Dev: 0.2726 +/- 0.0059	Std Dev: 0.4819 +/- 0.0049	Std Dev: 0.2802 +/- 0.0048



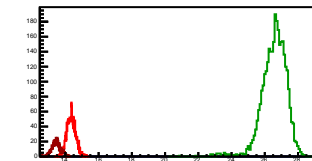
Cycle 18, Sums

Entries: 1653	Entries: 4784	Entries: 1716
Mean: 14.2767 +/- 0.0075	Mean: 26.9462 +/- 0.0059	Mean: 14.0638 +/- 0.0069
Std Dev: 0.3037 +/- 0.0053	Std Dev: 0.4104 +/- 0.0042	Std Dev: 0.2846 +/- 0.0049



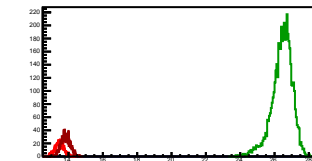
Cycle 19, Sums

Entries: 1680	Entries: 3179	Entries: 657
Mean: 14.3522 +/- 0.0065	Mean: 26.9611 +/- 0.0133	Mean: 13.4523 +/- 0.0103
Std Dev: 0.2676 +/- 0.0046	Std Dev: 0.7488 +/- 0.0094	Std Dev: 0.2642 +/- 0.0073



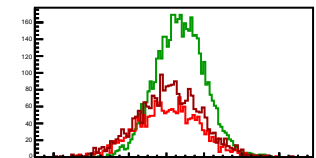
Cycle 20, Sums

Entries: 677	Entries: 4773	Entries: 1108
Mean: 13.4752 +/- 0.0104	Mean: 26.4327 +/- 0.0087	Mean: 13.8345 +/- 0.0082
Std Dev: 0.2713 +/- 0.0074	Std Dev: 0.5998 +/- 0.0061	Std Dev: 0.2722 +/- 0.0058



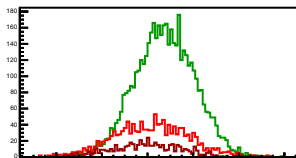
Cycle 1, Asyms

Entries: 2002	Entries: 4768	Entries: 2311
Mean: 0.0007 +/- 0.0004	Mean: 0.0073 +/- 0.0002	Mean: 0.0017 +/- 0.0004
Std Dev: 0.0164 +/- 0.0003	Std Dev: 0.0131 +/- 0.0001	Std Dev: 0.0169 +/- 0.0002



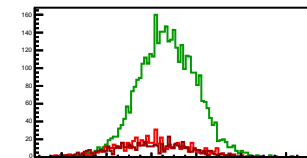
Cycle 2, Asyms

Entries: 1409	Entries: 4802	Entries: 575
Mean: 0.0015 +/- 0.0004	Mean: 0.0076 +/- 0.0002	Mean: -0.0003 +/- 0.0007
Std Dev: 0.0165 +/- 0.0003	Std Dev: 0.0130 +/- 0.0001	Std Dev: 0.0158 +/- 0.0005



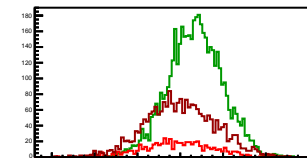
Cycle 3, Asyms

Entries: 577	Entries: 3871	Entries: 596
Mean: 0.0005 +/- 0.0007	Mean: 0.0071 +/- 0.0002	Mean: -0.0004 +/- 0.0007
Std Dev: 0.0162 +/- 0.0005	Std Dev: 0.0128 +/- 0.0001	Std Dev: 0.0171 +/- 0.0005



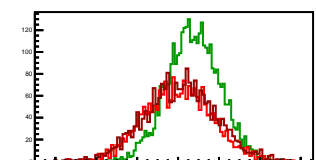
Cycle 4, Asyms

Entries: 592	Entries: 4777	Entries: 2204
Mean: -0.0007 +/- 0.0007	Mean: 0.0069 +/- 0.0002	Mean: 0.0001 +/- 0.0003
Std Dev: 0.0164 +/- 0.0005	Std Dev: 0.0128 +/- 0.0001	Std Dev: 0.0163 +/- 0.0002



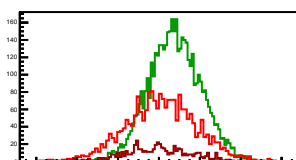
Cycle 5, Asyms

Entries: 2160	Entries: 3649	Entries: 2287
Mean: 0.0001 +/- 0.0004	Mean: 0.0076 +/- 0.0002	Mean: 0.0010 +/- 0.0004
Std Dev: 0.0164 +/- 0.0002	Std Dev: 0.0128 +/- 0.0001	Std Dev: 0.0172 +/- 0.0003



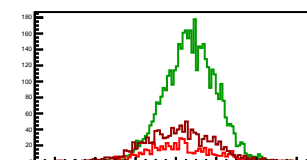
Cycle 6, Asyms

Entries: 2238	Entries: 4734	Entries: 593
Mean: 0.0010 +/- 0.0004	Mean: 0.0077 +/- 0.0002	Mean: -0.0004 +/- 0.0007
Std Dev: 0.0173 +/- 0.0003	Std Dev: 0.0128 +/- 0.0001	Std Dev: 0.0159 +/- 0.0005



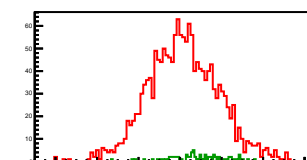
Cycle 7, Asyms

Entries: 590	Entries: 4405	Entries: 1187
Mean: 0.0020 +/- 0.0007	Mean: 0.0073 +/- 0.0002	Mean: 0.0014 +/- 0.0005
Std Dev: 0.0164 +/- 0.0005	Std Dev: 0.0126 +/- 0.0001	Std Dev: 0.0166 +/- 0.0003



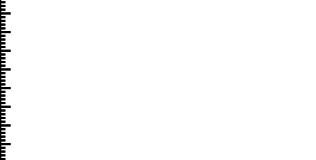
Cycle 8, Asyms

Entries: 1673	Entries: 79	Entries: 0
Mean: 0.0015 +/- 0.0004	Mean: 0.0079 +/- 0.0015	Mean: 0.0000 +/- 0.0000
Std Dev: 0.0169 +/- 0.0003	Std Dev: 0.0134 +/- 0.0011	Std Dev: 0.0000 +/- 0.0000



Cycle 9, Asyms

Entries: 0	Entries: 0	Entries: 0
Mean: 0.0000 +/- 0.0000	Mean: 0.0000 +/- 0.0000	Mean: 0.0000 +/- 0.0000
Std Dev: 0.0000 +/- 0.0000	Std Dev: 0.0000 +/- 0.0000	Std Dev: 0.0000 +/- 0.0000



Cycle 10, Asyms

Entries: 0	Entries: 0	Entries: 0
Mean: 0.0000 +/- 0.0000	Mean: 0.0000 +/- 0.0000	Mean: 0.0000 +/- 0.0000
Std Dev: 0.0000 +/- 0.0000	Std Dev: 0.0000 +/- 0.0000	Std Dev: 0.0000 +/- 0.0000



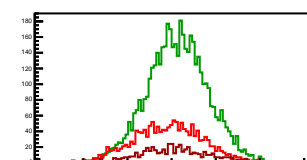
Cycle 11, Asyms

Entries: 0	Entries: 0	Entries: 0
Mean: 0.0000 +/- 0.0000	Mean: 0.0000 +/- 0.0000	Mean: 0.0000 +/- 0.0000
Std Dev: 0.0000 +/- 0.0000	Std Dev: 0.0000 +/- 0.0000	Std Dev: 0.0000 +/- 0.0000



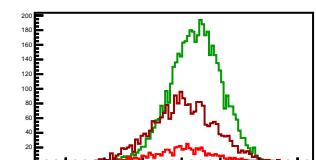
Cycle 12, Asyms

Entries: 1612	Entries: 4737	Entries: 569
Mean: -0.0018 +/- 0.0004	Mean: 0.0027 +/- 0.0002	Mean: 0.0013 +/- 0.0007
Std Dev: 0.0160 +/- 0.0003	Std Dev: 0.0137 +/- 0.0001	Std Dev: 0.0161 +/- 0.0005



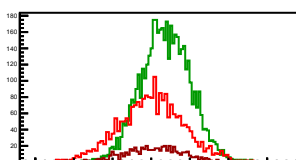
Cycle 13, Asyms

Entries: 571	Entries: 4789	Entries: 2321
Mean: 0.0007 +/- 0.0007	Mean: 0.0074 +/- 0.0002	Mean: 0.0012 +/- 0.0003
Std Dev: 0.0161 +/- 0.0005	Std Dev: 0.0132 +/- 0.0001	Std Dev: 0.0164 +/- 0.0002



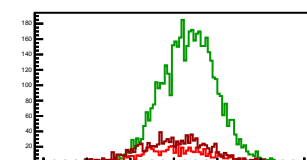
Cycle 14, Asyms

Entries: 2284	Entries: 4763	Entries: 571
Mean: 0.0002 +/- 0.0004	Mean: 0.0074 +/- 0.0002	Mean: 0.0016 +/- 0.0007
Std Dev: 0.0169 +/- 0.0002	Std Dev: 0.0128 +/- 0.0001	Std Dev: 0.0159 +/- 0.0005



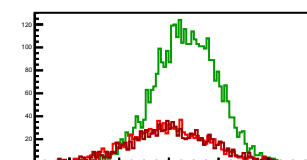
Cycle 15, Asyms

Entries: 572	Entries: 4821	Entries: 1073
Mean: 0.0008 +/- 0.0006	Mean: 0.0070 +/- 0.0002	Mean: 0.0004 +/- 0.0005
Std Dev: 0.0150 +/- 0.0004	Std Dev: 0.0125 +/- 0.0001	Std Dev: 0.0158 +/- 0.0003



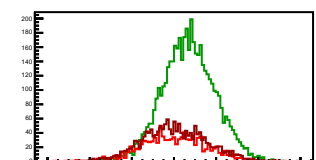
Cycle 16, Asyms

Entries: 1067	Entries: 3585	Entries: 1089
Mean: -0.0004 +/- 0.0005	Mean: 0.0069 +/- 0.0002	Mean: 0.0008 +/- 0.0005
Std Dev: 0.0157 +/- 0.0003	Std Dev: 0.0125 +/- 0.0001	Std Dev: 0.0160 +/- 0.0003



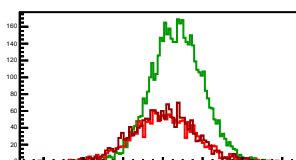
Cycle 17, Asyms

Entries: 1075	Entries: 4820	Entries: 1883
Mean: -0.0003 +/- 0.0005	Mean: 0.0069 +/- 0.0002	Mean: 0.0003 +/- 0.0004
Std Dev: 0.0156 +/- 0.0003	Std Dev: 0.0125 +/- 0.0001	Std Dev: 0.0153 +/- 0.0003



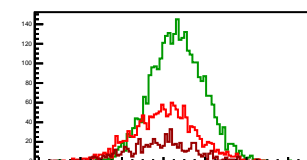
Cycle 18, Asyms

Entries: 1653	Entries: 4784	Entries: 1716
Mean: 0.0007 +/- 0.0004	Mean: 0.0072 +/- 0.0002	Mean: 0.0002 +/- 0.0004
Std Dev: 0.0153 +/- 0.0003	Std Dev: 0.0128 +/- 0.0001	Std Dev: 0.0156 +/- 0.0003



Cycle 19, Asyms

Entries: 1680	Entries: 3179	Entries: 657
Mean: 0.0005 +/- 0.0004	Mean: 0.0067 +/- 0.0002	Mean: -0.0014 +/- 0.0006
Std Dev: 0.0152 +/- 0.0003	Std Dev: 0.0127 +/- 0.0002	Std Dev: 0.0156 +/- 0.0004



Cycle 20, Asyms

Entries: 677	Entries: 4773	Entries: 1108
Mean: 0.0007 +/- 0.0006	Mean: 0.0072 +/- 0.0002	Mean: -0.0002 +/- 0.0005
Std Dev: 0.0153 +/- 0.0004	Std Dev: 0.0124 +/- 0.0001	Std Dev: 0.0163 +/- 0.0003

