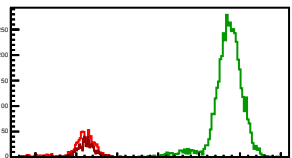
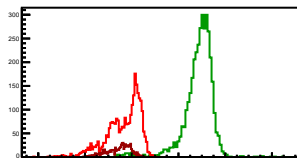


**Cycle 1, PosHel**

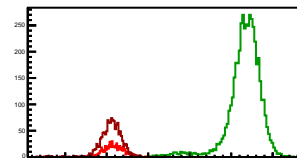
Entries: 876	Entries: 4721	Entries: 886
Mean: 6.1482 $\pm$ 0.0122	Mean: 9.7050 $\pm$ 0.0054	Mean: 6.2462 $\pm$ 0.0069
Std Dev: 0.3624 $\pm$ 0.0087	Std Dev: 0.3742 $\pm$ 0.0039	Std Dev: 0.2044 $\pm$ 0.0049

**Cycle 2, PosHel**

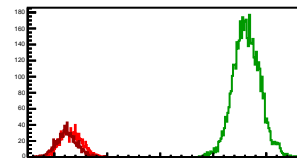
Entries: 2814	Entries: 3646	Entries: 764
Mean: 5.6515 $\pm$ 0.0138	Mean: 8.8575 $\pm$ 0.0106	Mean: 5.4458 $\pm$ 0.0185
Std Dev: 0.7303 $\pm$ 0.0097	Std Dev: 0.6382 $\pm$ 0.0075	Std Dev: 0.5103 $\pm$ 0.0131

**Cycle 3, PosHel**

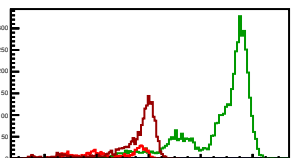
Entries: 735	Entries: 4807	Entries: 1295
Mean: 6.1766 $\pm$ 0.0087	Mean: 9.3148 $\pm$ 0.0060	Mean: 6.1047 $\pm$ 0.0074
Std Dev: 0.2389 $\pm$ 0.0062	Std Dev: 0.4155 $\pm$ 0.0042	Std Dev: 0.2675 $\pm$ 0.0053

**Cycle 4, PosHel**

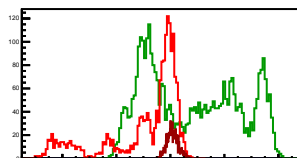
Entries: 1167	Entries: 4774	Entries: 910
Mean: 6.3160 $\pm$ 0.0058	Mean: 9.6314 $\pm$ 0.0037	Mean: 6.2350 $\pm$ 0.0064
Std Dev: 0.1996 $\pm$ 0.0041	Std Dev: 0.2528 $\pm$ 0.0026	Std Dev: 0.1930 $\pm$ 0.0045

**Cycle 5, PosHel**

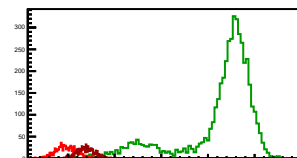
Entries: 802	Entries: 4779	Entries: 1884
Mean: 4.5644 $\pm$ 0.0396	Mean: 8.7462 $\pm$ 0.0182	Mean: 5.4723 $\pm$ 0.0232
Std Dev: 1.1215 $\pm$ 0.0280	Std Dev: 0.2548 $\pm$ 0.0128	Std Dev: 1.0060 $\pm$ 0.0164

**Cycle 6, PosHel**

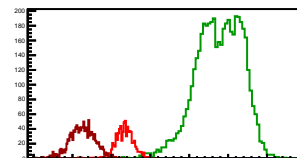
Entries: 1974	Entries: 3821	Entries: 888
Mean: 5.0398 $\pm$ 0.0328	Mean: 8.8061 $\pm$ 0.0281	Mean: 6.0792 $\pm$ 0.0070
Std Dev: 1.4209 $\pm$ 0.0232	Std Dev: 1.7386 $\pm$ 0.0199	Std Dev: 0.2096 $\pm$ 0.0050

**Cycle 7, PosHel**

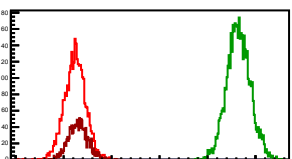
Entries: 843	Entries: 4800	Entries: 777
Mean: 5.9645 $\pm$ 0.0080	Mean: 9.2412 $\pm$ 0.0117	Mean: 6.3873 $\pm$ 0.0070
Std Dev: 0.2333 $\pm$ 0.0057	Std Dev: 0.8099 $\pm$ 0.0083	Std Dev: 0.1957 $\pm$ 0.0050

**Cycle 8, PosHel**

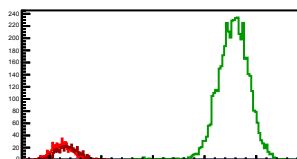
Entries: 776	Entries: 4827	Entries: 1348
Mean: 6.3352 $\pm$ 0.0087	Mean: 8.7619 $\pm$ 0.0085	Mean: 5.2560 $\pm$ 0.0087
Std Dev: 0.2410 $\pm$ 0.0061	Std Dev: 0.5931 $\pm$ 0.0060	Std Dev: 0.3177 $\pm$ 0.0061

**Cycle 9, PosHel**

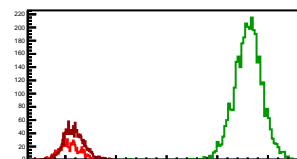
Entries: 3056	Entries: 4698	Entries: 1341
Mean: 6.2368 $\pm$ 0.0040	Mean: 9.6476 $\pm$ 0.0036	Mean: 6.3046 $\pm$ 0.0056
Std Dev: 0.2215 $\pm$ 0.0028	Std Dev: 0.2462 $\pm$ 0.0025	Std Dev: 0.2035 $\pm$ 0.0039

**Cycle 10, PosHel**

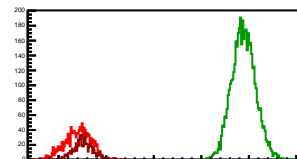
Entries: 764	Entries: 4061	Entries: 715
Mean: 6.2410 $\pm$ 0.0073	Mean: 9.5557 $\pm$ 0.0044	Mean: 6.3474 $\pm$ 0.0079
Std Dev: 0.2032 $\pm$ 0.0052	Std Dev: 0.3025 $\pm$ 0.0031	Std Dev: 0.2106 $\pm$ 0.0056

**Cycle 11, PosHel**

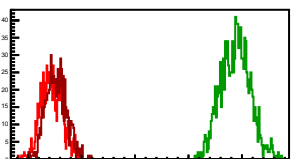
Entries: 708	Entries: 3552	Entries: 1393
Mean: 6.0966 $\pm$ 0.0076	Mean: 9.6091 $\pm$ 0.0046	Mean: 6.1706 $\pm$ 0.0054
Std Dev: 0.2016 $\pm$ 0.0054	Std Dev: 0.2748 $\pm$ 0.0033	Std Dev: 0.2008 $\pm$ 0.0039

**Cycle 12, PosHel**

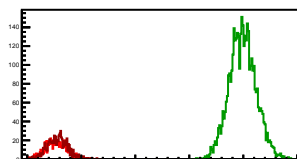
Entries: 1319	Entries: 4701	Entries: 771
Mean: 6.3990 $\pm$ 0.0075	Mean: 9.8907 $\pm$ 0.0037	Mean: 5.5248 $\pm$ 0.0073
Std Dev: 0.2714 $\pm$ 0.0053	Std Dev: 0.2514 $\pm$ 0.0026	Std Dev: 0.2016 $\pm$ 0.0051

**Cycle 13, PosHel**

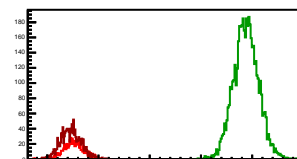
Entries: 887	Entries: 1242	Entries: 735
Mean: 6.6438 $\pm$ 0.0067	Mean: 9.8774 $\pm$ 0.0077	Mean: 6.5265 $\pm$ 0.0071
Std Dev: 0.2004 $\pm$ 0.0048	Std Dev: 0.2700 $\pm$ 0.0054	Std Dev: 0.1913 $\pm$ 0.0050

**Cycle 14, PosHel**

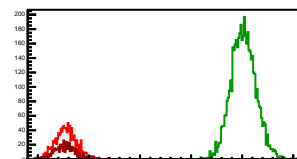
Entries: 704	Entries: 4060	Entries: 726
Mean: 6.5306 $\pm$ 0.0075	Mean: 9.9891 $\pm$ 0.0039	Mean: 6.6406 $\pm$ 0.0071
Std Dev: 0.1992 $\pm$ 0.0053	Std Dev: 0.2472 $\pm$ 0.0027	Std Dev: 0.1926 $\pm$ 0.0051

**Cycle 15, PosHel**

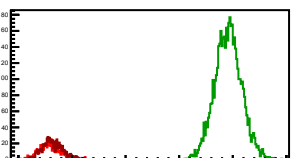
Entries: 696	Entries: 4758	Entries: 1303
Mean: 6.5134 $\pm$ 0.0074	Mean: 9.8801 $\pm$ 0.0035	Mean: 6.4571 $\pm$ 0.0056
Std Dev: 0.1962 $\pm$ 0.0053	Std Dev: 0.2439 $\pm$ 0.0025	Std Dev: 0.2007 $\pm$ 0.0039

**Cycle 16, PosHel**

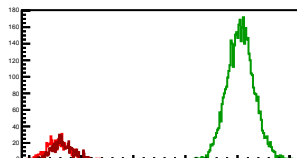
Entries: 1252	Entries: 4816	Entries: 659
Mean: 6.5439 $\pm$ 0.0057	Mean: 10.0268 $\pm$ 0.0035	Mean: 6.5308 $\pm$ 0.0079
Std Dev: 0.2012 $\pm$ 0.0040	Std Dev: 0.2418 $\pm$ 0.0025	Std Dev: 0.2029 $\pm$ 0.0056

**Cycle 17, PosHel**

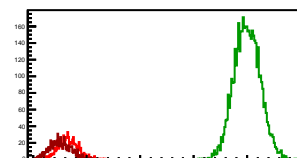
Entries: 653	Entries: 4775	Entries: 707
Mean: 6.5824 $\pm$ 0.0076	Mean: 9.9144 $\pm$ 0.0036	Mean: 6.6362 $\pm$ 0.0073
Std Dev: 0.1942 $\pm$ 0.0054	Std Dev: 0.2492 $\pm$ 0.0026	Std Dev: 0.1940 $\pm$ 0.0052

**Cycle 18, PosHel**

Entries: 699	Entries: 4741	Entries: 774
Mean: 6.5487 $\pm$ 0.0079	Mean: 10.0608 $\pm$ 0.0037	Mean: 6.6406 $\pm$ 0.0071
Std Dev: 0.2085 $\pm$ 0.0056	Std Dev: 0.2580 $\pm$ 0.0026	Std Dev: 0.1988 $\pm$ 0.0051

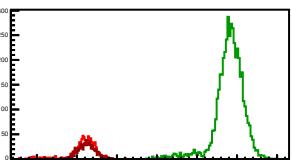
**Cycle 19, PosHel**

Entries: 753	Entries: 4729	Entries: 817
Mean: 6.5134 $\pm$ 0.0074	Mean: 9.9907 $\pm$ 0.0035	Mean: 6.5062 $\pm$ 0.0070
Std Dev: 0.1914 $\pm$ 0.0049	Std Dev: 0.2423 $\pm$ 0.0025	Std Dev: 0.2001 $\pm$ 0.0049



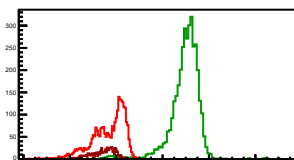
### Cycle 1, NegHel

Entries: 876	Entries: 4721	Entries: 886
Mean: 6.1537 $\pm$ 0.0123	Mean: 9.8057 $\pm$ 0.0054	Mean: 6.2436 $\pm$ 0.0071
Std Dev: 0.3651 $\pm$ 0.0087	Std Dev: 0.3736 $\pm$ 0.0038	Std Dev: 0.2122 $\pm$ 0.0050



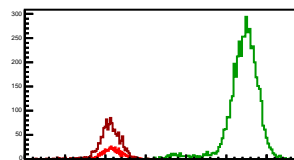
### Cycle 2, NegHel

Entries: 2814	Entries: 3646	Entries: 764
Mean: 5.6550 $\pm$ 0.0137	Mean: 8.9604 $\pm$ 0.0106	Mean: 5.4312 $\pm$ 0.0184
Std Dev: 0.7282 $\pm$ 0.0097	Std Dev: 0.6422 $\pm$ 0.0075	Std Dev: 0.5074 $\pm$ 0.0130



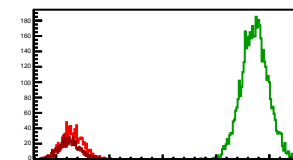
### Cycle 3, NegHel

Entries: 735	Entries: 4807	Entries: 1295
Mean: 6.1790 $\pm$ 0.0089	Mean: 9.4112 $\pm$ 0.0060	Mean: 6.1061 $\pm$ 0.0077
Std Dev: 0.2416 $\pm$ 0.0063	Std Dev: 0.4125 $\pm$ 0.0042	Std Dev: 0.2767 $\pm$ 0.0054



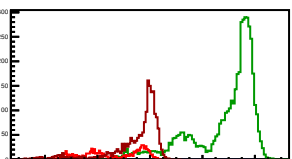
### Cycle 4, NegHel

Entries: 1167	Entries: 4774	Entries: 910
Mean: 6.3060 $\pm$ 0.0058	Mean: 9.7284 $\pm$ 0.0036	Mean: 6.2454 $\pm$ 0.0064
Std Dev: 0.1971 $\pm$ 0.0041	Std Dev: 0.2499 $\pm$ 0.0026	Std Dev: 0.1919 $\pm$ 0.0045



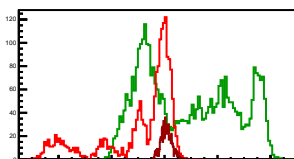
### Cycle 5, NegHel

Entries: 802	Entries: 4779	Entries: 1884
Mean: 4.5741 $\pm$ 0.0397	Mean: 8.8389 $\pm$ 0.0182	Mean: 5.4818 $\pm$ 0.0232
Std Dev: 1.1251 $\pm$ 0.0281	Std Dev: 0.2549 $\pm$ 0.0128	Std Dev: 1.0055 $\pm$ 0.0164



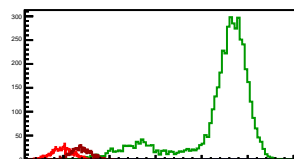
### Cycle 6, NegHel

Entries: 1974	Entries: 3821	Entries: 888
Mean: 5.0522 $\pm$ 0.0328	Mean: 6.9058 $\pm$ 0.0283	Mean: 6.0729 $\pm$ 0.0068
Std Dev: 1.4216 $\pm$ 0.0232	Std Dev: 1.7467 $\pm$ 0.0200	Std Dev: 0.2039 $\pm$ 0.0048



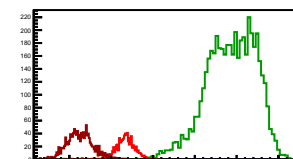
### Cycle 7, NegHel

Entries: 843	Entries: 4800	Entries: 777
Mean: 5.9733 $\pm$ 0.0081	Mean: 9.3432 $\pm$ 0.0118	Mean: 6.3807 $\pm$ 0.0074
Std Dev: 0.2341 $\pm$ 0.0057	Std Dev: 0.8158 $\pm$ 0.0083	Std Dev: 0.2057 $\pm$ 0.0052



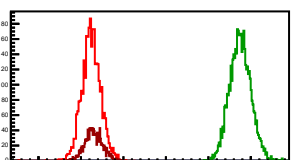
### Cycle 8, NegHel

Entries: 776	Entries: 4827	Entries: 1348
Mean: 6.3336 $\pm$ 0.0084	Mean: 8.8600 $\pm$ 0.0086	Mean: 5.2591 $\pm$ 0.0085
Std Dev: 0.2333 $\pm$ 0.0059	Std Dev: 0.5952 $\pm$ 0.0061	Std Dev: 0.3131 $\pm$ 0.0090



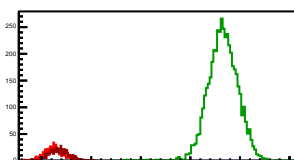
### Cycle 9, NegHel

Entries: 3056	Entries: 4698	Entries: 1341
Mean: 6.2412 $\pm$ 0.0040	Mean: 9.7504 $\pm$ 0.0036	Mean: 6.3011 $\pm$ 0.0056
Std Dev: 0.2228 $\pm$ 0.0029	Std Dev: 0.2488 $\pm$ 0.0026	Std Dev: 0.2062 $\pm$ 0.0040



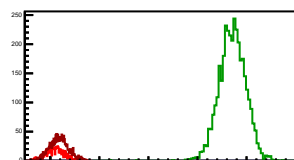
### Cycle 10, NegHel

Entries: 764	Entries: 4061	Entries: 715
Mean: 6.2375 $\pm$ 0.0069	Mean: 9.6540 $\pm$ 0.0044	Mean: 6.3471 $\pm$ 0.0075
Std Dev: 0.1906 $\pm$ 0.0049	Std Dev: 0.3067 $\pm$ 0.0031	Std Dev: 0.2016 $\pm$ 0.0053



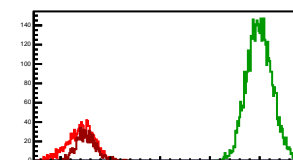
### Cycle 11, NegHel

Entries: 708	Entries: 3552	Entries: 1393
Mean: 6.1021 $\pm$ 0.0073	Mean: 9.7101 $\pm$ 0.0046	Mean: 6.1773 $\pm$ 0.0052
Std Dev: 0.1932 $\pm$ 0.0051	Std Dev: 0.2724 $\pm$ 0.0032	Std Dev: 0.1935 $\pm$ 0.0037



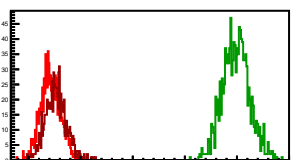
### Cycle 12, NegHel

Entries: 1319	Entries: 4701	Entries: 771
Mean: 6.4026 $\pm$ 0.0074	Mean: 9.9996 $\pm$ 0.0038	Mean: 6.5113 $\pm$ 0.0074
Std Dev: 0.2679 $\pm$ 0.0052	Std Dev: 0.2572 $\pm$ 0.0027	Std Dev: 0.2047 $\pm$ 0.0052



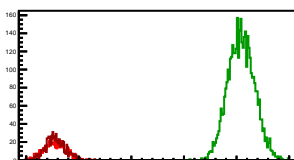
### Cycle 13, NegHel

Entries: 887	Entries: 1242	Entries: 735
Mean: 6.4266 $\pm$ 0.0065	Mean: 9.9826 $\pm$ 0.0074	Mean: 6.5223 $\pm$ 0.0074
Std Dev: 0.1928 $\pm$ 0.0046	Std Dev: 0.2619 $\pm$ 0.0053	Std Dev: 0.2010 $\pm$ 0.0052



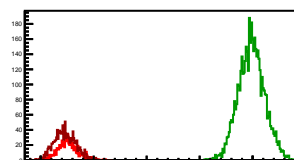
### Cycle 14, NegHel

Entries: 704	Entries: 4060	Entries: 726
Mean: 6.5410 $\pm$ 0.0076	Mean: 10.1630 $\pm$ 0.0039	Mean: 6.5571 $\pm$ 0.0071
Std Dev: 0.2013 $\pm$ 0.0054	Std Dev: 0.2509 $\pm$ 0.0028	Std Dev: 0.1905 $\pm$ 0.0050



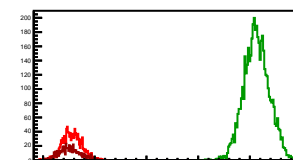
### Cycle 15, NegHel

Entries: 696	Entries: 4758	Entries: 1303
Mean: 6.5164 $\pm$ 0.0075	Mean: 9.9791 $\pm$ 0.0036	Mean: 6.4549 $\pm$ 0.0056
Std Dev: 0.1969 $\pm$ 0.0053	Std Dev: 0.2469 $\pm$ 0.0025	Std Dev: 0.2004 $\pm$ 0.0039



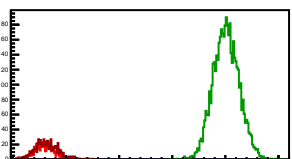
### Cycle 16, NegHel

Entries: 1252	Entries: 4816	Entries: 659
Mean: 6.5585 $\pm$ 0.0054	Mean: 10.1305 $\pm$ 0.0035	Mean: 6.5142 $\pm$ 0.0077
Std Dev: 0.1926 $\pm$ 0.0038	Std Dev: 0.2453 $\pm$ 0.0025	Std Dev: 0.1976 $\pm$ 0.0054



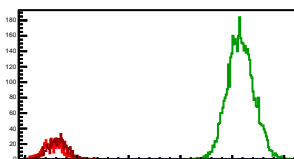
### Cycle 17, NegHel

Entries: 653	Entries: 4775	Entries: 707
Mean: 6.5895 $\pm$ 0.0075	Mean: 10.0147 $\pm$ 0.0035	Mean: 6.6363 $\pm$ 0.0080
Std Dev: 0.1911 $\pm$ 0.0053	Std Dev: 0.2436 $\pm$ 0.0025	Std Dev: 0.2117 $\pm$ 0.0056



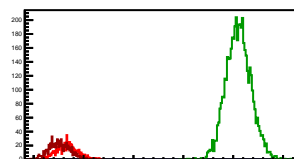
### Cycle 18, NegHel

Entries: 699	Entries: 4741	Entries: 774
Mean: 6.5460 $\pm$ 0.0076	Mean: 10.1630 $\pm$ 0.0037	Mean: 6.6277 $\pm$ 0.0068
Std Dev: 0.2002 $\pm$ 0.0054	Std Dev: 0.2559 $\pm$ 0.0026	Std Dev: 0.1901 $\pm$ 0.0048



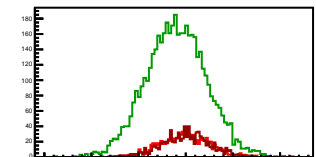
### Cycle 19, NegHel

Entries: 753	Entries: 4729	Entries: 817
Mean: 6.6625 $\pm$ 0.0075	Mean: 10.1081 $\pm$ 0.0036	Mean: 6.5127 $\pm$ 0.0072
Std Dev: 0.2067 $\pm$ 0.0053	Std Dev: 0.2487 $\pm$ 0.0026	Std Dev: 0.2070 $\pm$ 0.0051



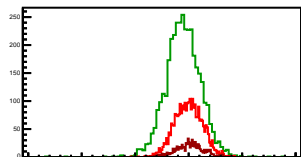
### Cycle 1, Diffs

Entries: 876	Entries: 4721	Entries: 886
Mean: -0.0054 +/- 0.0068	Mean: -0.1007 +/- 0.0047	Mean: 0.0026 +/- 0.0089
Std Dev: 0.2613 +/- 0.0062	Std Dev: 0.3202 +/- 0.0033	Std Dev: 0.2661 +/- 0.0063



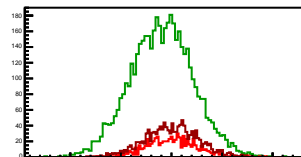
### Cycle 2, Diffs

Entries: 2814	Entries: 3646	Entries: 764
Mean: -0.0035 +/- 0.0049	Mean: -0.1029 +/- 0.0054	Mean: 0.0147 +/- 0.0094
Std Dev: 0.2604 +/- 0.0035	Std Dev: 0.3234 +/- 0.0038	Std Dev: 0.2586 +/- 0.0066



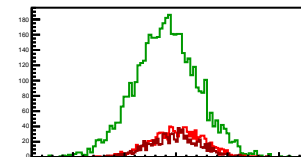
### Cycle 3, Diffs

Entries: 735	Entries: 4807	Entries: 1295
Mean: -0.0024 +/- 0.0094	Mean: -0.0964 +/- 0.0045	Mean: -0.0014 +/- 0.0073
Std Dev: 0.2557 +/- 0.0067	Std Dev: 0.3093 +/- 0.0032	Std Dev: 0.2630 +/- 0.0052



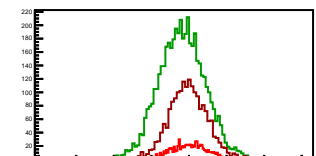
### Cycle 4, Diffs

Entries: 1167	Entries: 4774	Entries: 910
Mean: 0.0100 +/- 0.0073	Mean: -0.0970 +/- 0.0044	Mean: -0.0104 +/- 0.0080
Std Dev: 0.2488 +/- 0.0052	Std Dev: 0.3073 +/- 0.0031	Std Dev: 0.2407 +/- 0.0056



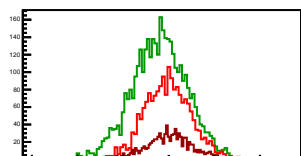
### Cycle 5, Diffs

Entries: 802	Entries: 4779	Entries: 1884
Mean: -0.0098 +/- 0.0083	Mean: -0.0927 +/- 0.0045	Mean: -0.0095 +/- 0.0062
Std Dev: 0.2342 +/- 0.0059	Std Dev: 0.3090 +/- 0.0032	Std Dev: 0.2688 +/- 0.0044



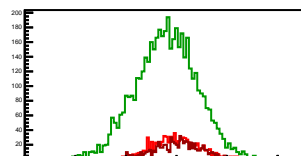
### Cycle 6, Diffs

Entries: 1974	Entries: 3821	Entries: 888
Mean: -0.0124 +/- 0.0050	Mean: -0.0997 +/- 0.0049	Mean: 0.0062 +/- 0.0083
Std Dev: 0.2598 +/- 0.0042	Std Dev: 0.3040 +/- 0.0035	Std Dev: 0.2471 +/- 0.0059



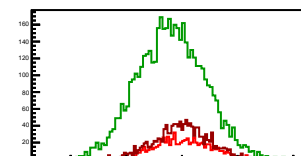
### Cycle 7, Diffs

Entries: 843	Entries: 4800	Entries: 777
Mean: -0.0089 +/- 0.0083	Mean: -0.1020 +/- 0.0044	Mean: 0.0066 +/- 0.0089
Std Dev: 0.2422 +/- 0.0059	Std Dev: 0.3053 +/- 0.0031	Std Dev: 0.2491 +/- 0.0062



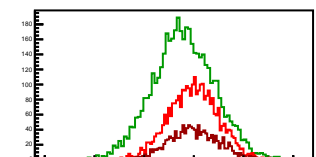
### Cycle 8, Diffs

Entries: 776	Entries: 4827	Entries: 1348
Mean: 0.0016 +/- 0.0089	Mean: -0.0981 +/- 0.0044	Mean: -0.0030 +/- 0.0066
Std Dev: 0.2471 +/- 0.0062	Std Dev: 0.3046 +/- 0.0031	Std Dev: 0.2418 +/- 0.0047



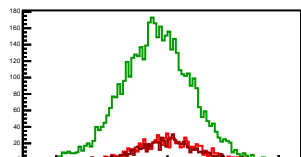
### Cycle 9, Diffs

Entries: 3056	Entries: 4998	Entries: 1341
Mean: -0.0044 +/- 0.0045	Mean: -0.1028 +/- 0.0046	Mean: 0.0035 +/- 0.0070
Std Dev: 0.2478 +/- 0.0032	Std Dev: 0.3132 +/- 0.0032	Std Dev: 0.2555 +/- 0.0049



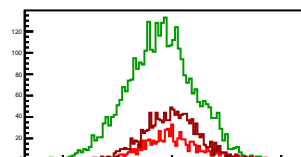
### Cycle 10, Diffs

Entries: 764	Entries: 4761	Entries: 715
Mean: 0.0035 +/- 0.0094	Mean: -0.0983 +/- 0.0045	Mean: 0.0003 +/- 0.0096
Std Dev: 0.2589 +/- 0.0069	Std Dev: 0.3082 +/- 0.0032	Std Dev: 0.2555 +/- 0.0068



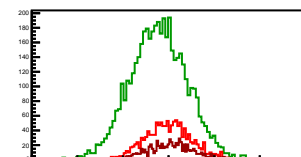
### Cycle 11, Diffs

Entries: 708	Entries: 3552	Entries: 1393
Mean: -0.0056 +/- 0.0096	Mean: -0.1010 +/- 0.0052	Mean: -0.0067 +/- 0.0067
Std Dev: 0.2549 +/- 0.0068	Std Dev: 0.3090 +/- 0.0037	Std Dev: 0.2486 +/- 0.0047



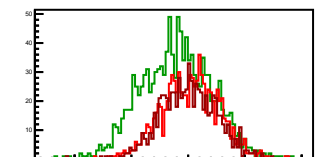
### Cycle 12, Diffs

Entries: 1319	Entries: 4701	Entries: 771
Mean: -0.0036 +/- 0.0069	Mean: -0.1090 +/- 0.0046	Mean: 0.0135 +/- 0.0090
Std Dev: 0.2520 +/- 0.0049	Std Dev: 0.3133 +/- 0.0032	Std Dev: 0.2489 +/- 0.0062



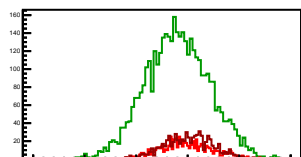
### Cycle 13, Diffs

Entries: 887	Entries: 1242	Entries: 735
Mean: 0.0172 +/- 0.0085	Mean: -0.1052 +/- 0.0089	Mean: -0.0042 +/- 0.0090
Std Dev: 0.2546 +/- 0.0060	Std Dev: 0.3125 +/- 0.0062	Std Dev: 0.2450 +/- 0.0064



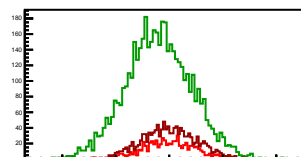
### Cycle 14, Diffs

Entries: 704	Entries: 4060	Entries: 726
Mean: -0.0104 +/- 0.0098	Mean: -0.1012 +/- 0.0049	Mean: 0.0108 +/- 0.0091
Std Dev: 0.2592 +/- 0.0069	Std Dev: 0.3122 +/- 0.0035	Std Dev: 0.2463 +/- 0.0065



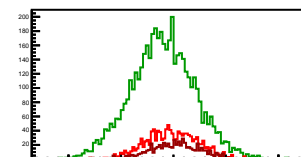
### Cycle 15, Diffs

Entries: 696	Entries: 4758	Entries: 1303
Mean: -0.0030 +/- 0.0096	Mean: -0.0990 +/- 0.0045	Mean: 0.0022 +/- 0.0071
Std Dev: 0.2527 +/- 0.0068	Std Dev: 0.3090 +/- 0.0032	Std Dev: 0.2561 +/- 0.0050



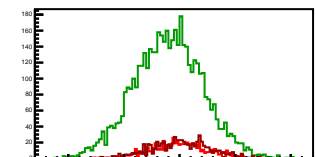
### Cycle 16, Diffs

Entries: 1252	Entries: 4816	Entries: 659
Mean: -0.0146 +/- 0.0070	Mean: -0.1038 +/- 0.0044	Mean: 0.0166 +/- 0.0096
Std Dev: 0.2466 +/- 0.0049	Std Dev: 0.3036 +/- 0.0031	Std Dev: 0.2475 +/- 0.0068



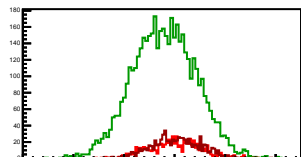
### Cycle 17, Diffs

Entries: 653	Entries: 4775	Entries: 707
Mean: -0.0071 +/- 0.0096	Mean: -0.1003 +/- 0.0044	Mean: -0.0001 +/- 0.0103
Std Dev: 0.2464 +/- 0.0066	Std Dev: 0.3072 +/- 0.0031	Std Dev: 0.2726 +/- 0.0072



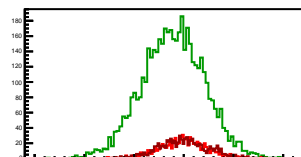
### Cycle 18, Diffs

Entries: 699	Entries: 4741	Entries: 774
Mean: 0.0027 +/- 0.0101	Mean: -0.1022 +/- 0.0046	Mean: 0.0128 +/- 0.0087
Std Dev: 0.2668 +/- 0.0071	Std Dev: 0.3142 +/- 0.0032	Std Dev: 0.2418 +/- 0.0061



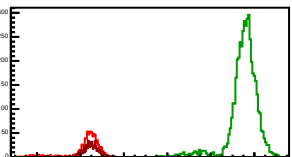
### Cycle 19, Diffs

Entries: 753	Entries: 4729	Entries: 817
Mean: -0.0073 +/- 0.0089	Mean: -0.1084 +/- 0.0046	Mean: -0.0065 +/- 0.0088
Std Dev: 0.2433 +/- 0.0062	Std Dev: 0.3146 +/- 0.0032	Std Dev: 0.2511 +/- 0.0062



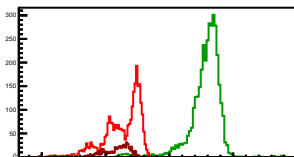
### Cycle 1, Sums

Entries: 876	Entries: 4721	Entries: 886
Mean: 12.3019 $\pm$ 0.0229	Mean: 19.5107 $\pm$ 0.0098	Mean: 12.4898 $\pm$ 0.0108
Std Dev: 0.6790 $\pm$ 0.0162	Std Dev: 0.6798 $\pm$ 0.0070	Std Dev: 0.3206 $\pm$ 0.0076



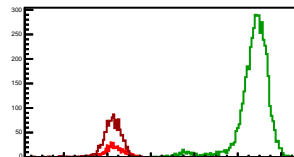
### Cycle 2, Sums

Entries: 2814	Entries: 3646	Entries: 764
Mean: 11.3064 $\pm$ 0.0271	Mean: 17.8179 $\pm$ 0.0205	Mean: 10.8770 $\pm$ 0.0356
Std Dev: 1.4350 $\pm$ 0.0191	Std Dev: 1.2388 $\pm$ 0.0145	Std Dev: 0.9843 $\pm$ 0.0252



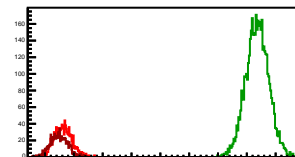
### Cycle 3, Sums

Entries: 735	Entries: 4807	Entries: 1295
Mean: 12.3556 $\pm$ 0.0149	Mean: 18.7259 $\pm$ 0.0111	Mean: 12.2108 $\pm$ 0.0132
Std Dev: 0.4044 $\pm$ 0.0105	Std Dev: 0.7681 $\pm$ 0.0078	Std Dev: 0.4766 $\pm$ 0.0094



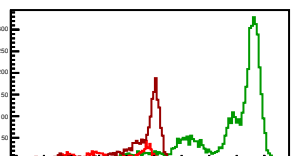
### Cycle 4, Sums

Entries: 1167	Entries: 4774	Entries: 910
Mean: 12.6220 $\pm$ 0.0090	Mean: 19.3598 $\pm$ 0.0058	Mean: 12.4804 $\pm$ 0.0100
Std Dev: 0.3089 $\pm$ 0.0064	Std Dev: 0.3978 $\pm$ 0.0041	Std Dev: 0.3004 $\pm$ 0.0070



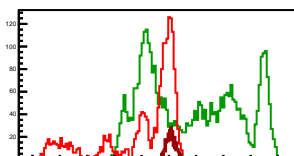
### Cycle 5, Sums

Entries: 802	Entries: 4779	Entries: 1884
Mean: 9.1385 $\pm$ 0.0789	Mean: 17.5851 $\pm$ 0.0360	Mean: 10.9542 $\pm$ 0.0459
Std Dev: 2.2343 $\pm$ 0.0558	Std Dev: 2.4906 $\pm$ 0.0255	Std Dev: 1.9935 $\pm$ 0.0325



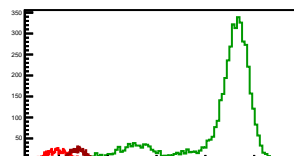
### Cycle 6, Sums

Entries: 1974	Entries: 3821	Entries: 888
Mean: 10.0920 $\pm$ 0.0654	Mean: 13.7118 $\pm$ 0.0562	Mean: 12.1521 $\pm$ 0.0111
Std Dev: 2.8307 $\pm$ 0.0462	Std Dev: 3.4720 $\pm$ 0.0397	Std Dev: 0.3316 $\pm$ 0.0079



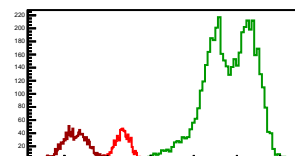
### Cycle 7, Sums

Entries: 843	Entries: 4800	Entries: 777
Mean: 11.9378 $\pm$ 0.0138	Mean: 18.5844 $\pm$ 0.0230	Mean: 12.7679 $\pm$ 0.0113
Std Dev: 0.3996 $\pm$ 0.0097	Std Dev: 1.5969 $\pm$ 0.0163	Std Dev: 0.3149 $\pm$ 0.0080



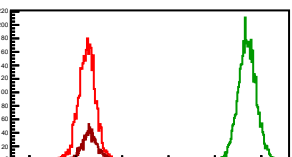
### Cycle 8, Sums

Entries: 776	Entries: 4827	Entries: 1348
Mean: 12.6687 $\pm$ 0.0145	Mean: 17.6219 $\pm$ 0.0165	Mean: 10.5151 $\pm$ 0.0159
Std Dev: 0.4050 $\pm$ 0.0103	Std Dev: 1.1486 $\pm$ 0.0117	Std Dev: 0.5826 $\pm$ 0.0112



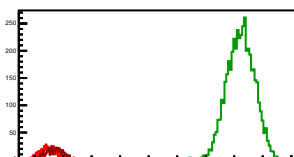
### Cycle 9, Sums

Entries: 3056	Entries: 4698	Entries: 1341
Mean: 12.4781 $\pm$ 0.0067	Mean: 19.3980 $\pm$ 0.0056	Mean: 12.6057 $\pm$ 0.0087
Std Dev: 0.3688 $\pm$ 0.0047	Std Dev: 0.3833 $\pm$ 0.0040	Std Dev: 0.3203 $\pm$ 0.0062



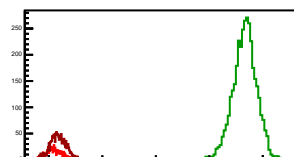
### Cycle 10, Sums

Entries: 764	Entries: 4761	Entries: 715
Mean: 12.4785 $\pm$ 0.0107	Mean: 19.2097 $\pm$ 0.0076	Mean: 12.6946 $\pm$ 0.0121
Std Dev: 0.2969 $\pm$ 0.0071	Std Dev: 0.5255 $\pm$ 0.0054	Std Dev: 0.3236 $\pm$ 0.0086



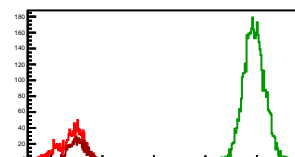
### Cycle 11, Sums

Entries: 708	Entries: 3552	Entries: 1393
Mean: 12.1987 $\pm$ 0.0113	Mean: 19.3192 $\pm$ 0.0076	Mean: 12.3478 $\pm$ 0.0082
Std Dev: 0.3016 $\pm$ 0.0080	Std Dev: 0.4516 $\pm$ 0.0054	Std Dev: 0.3061 $\pm$ 0.0058



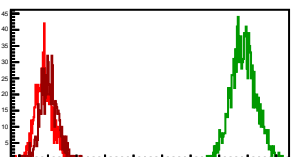
### Cycle 12, Sums

Entries: 1319	Entries: 4701	Entries: 771
Mean: 12.8016 $\pm$ 0.0131	Mean: 19.8903 $\pm$ 0.0058	Mean: 13.0361 $\pm$ 0.0116
Std Dev: 0.4769 $\pm$ 0.0093	Std Dev: 0.4007 $\pm$ 0.0041	Std Dev: 0.3212 $\pm$ 0.0082



### Cycle 13, Sums

Entries: 887	Entries: 1242	Entries: 735
Mean: 12.8704 $\pm$ 0.0116	Mean: 19.8599 $\pm$ 0.0122	Mean: 13.0488 $\pm$ 0.0113
Std Dev: 0.2998 $\pm$ 0.0071	Std Dev: 0.4304 $\pm$ 0.0086	Std Dev: 0.3065 $\pm$ 0.0080



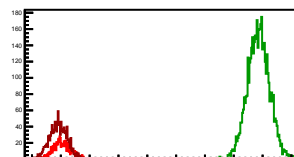
### Cycle 14, Sums

Entries: 704	Entries: 4060	Entries: 726
Mean: 13.0716 $\pm$ 0.0115	Mean: 20.0794 $\pm$ 0.0061	Mean: 13.1249 $\pm$ 0.0109
Std Dev: 0.3053 $\pm$ 0.0081	Std Dev: 0.3882 $\pm$ 0.0043	Std Dev: 0.2934 $\pm$ 0.0077



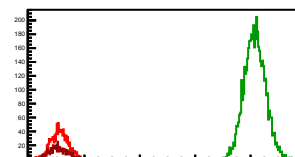
### Cycle 15, Sums

Entries: 696	Entries: 4758	Entries: 1303
Mean: 13.0298 $\pm$ 0.0114	Mean: 19.8592 $\pm$ 0.0055	Mean: 12.9120 $\pm$ 0.0086
Std Dev: 0.3010 $\pm$ 0.0081	Std Dev: 0.3814 $\pm$ 0.0039	Std Dev: 0.3087 $\pm$ 0.0060



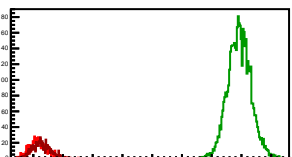
### Cycle 16, Sums

Entries: 1252	Entries: 4816	Entries: 659
Mean: 13.1024 $\pm$ 0.0087	Mean: 20.1573 $\pm$ 0.0055	Mean: 13.0450 $\pm$ 0.0123
Std Dev: 0.3071 $\pm$ 0.0061	Std Dev: 0.3809 $\pm$ 0.0039	Std Dev: 0.3150 $\pm$ 0.0087



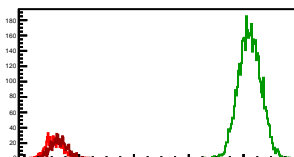
### Cycle 17, Sums

Entries: 653	Entries: 4775	Entries: 707
Mean: 13.1720 $\pm$ 0.0116	Mean: 19.9291 $\pm$ 0.0056	Mean: 13.2725 $\pm$ 0.0113
Std Dev: 0.2962 $\pm$ 0.0082	Std Dev: 0.3854 $\pm$ 0.0039	Std Dev: 0.3011 $\pm$ 0.0080



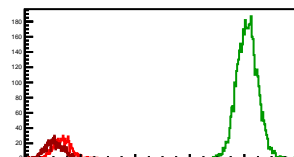
### Cycle 18, Sums

Entries: 699	Entries: 4741	Entries: 774
Mean: 13.0946 $\pm$ 0.0117	Mean: 20.2238 $\pm$ 0.0059	Mean: 13.2683 $\pm$ 0.0110
Std Dev: 0.3098 $\pm$ 0.0083	Std Dev: 0.4067 $\pm$ 0.0042	Std Dev: 0.3047 $\pm$ 0.0077



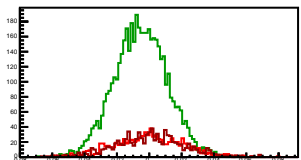
### Cycle 19, Sums

Entries: 753	Entries: 4729	Entries: 817
Mean: 13.3176 $\pm$ 0.0115	Mean: 20.1070 $\pm$ 0.0055	Mean: 13.0189 $\pm$ 0.0112
Std Dev: 0.3156 $\pm$ 0.0081	Std Dev: 0.3769 $\pm$ 0.0039	Std Dev: 0.3204 $\pm$ 0.0079



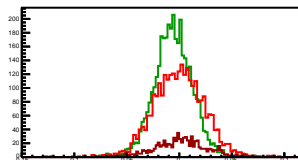
### Cycle 1, Asyms

Entries: 876	Entries: 4721	Entries: 886
Mean: $-0.0004 \pm 0.0007$	Mean: $-0.0052 \pm 0.0002$	Mean: $0.0002 \pm 0.0007$
Std Dev: $0.0212 \pm 0.0005$	Std Dev: $0.0164 \pm 0.0002$	Std Dev: $0.0212 \pm 0.0005$



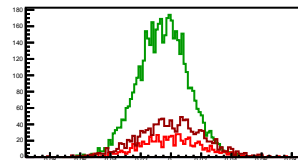
### Cycle 2, Asyms

Entries: 2814	Entries: 3646	Entries: 764
Mean: $-0.0004 \pm 0.0005$	Mean: $-0.0058 \pm 0.0003$	Mean: $0.0013 \pm 0.0009$
Std Dev: $0.0242 \pm 0.0003$	Std Dev: $0.0182 \pm 0.0002$	Std Dev: $0.0242 \pm 0.0009$



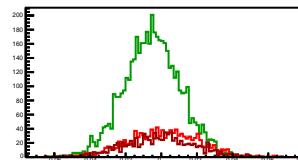
### Cycle 3, Asyms

Entries: 735	Entries: 4807	Entries: 1295
Mean: $-0.0002 \pm 0.0008$	Mean: $-0.0052 \pm 0.0002$	Mean: $-0.0001 \pm 0.0004$
Std Dev: $0.0207 \pm 0.0005$	Std Dev: $0.0165 \pm 0.0002$	Std Dev: $0.0216 \pm 0.0004$



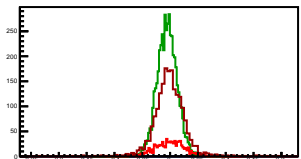
### Cycle 4, Asyms

Entries: 1167	Entries: 4774	Entries: 910
Mean: $0.0008 \pm 0.0006$	Mean: $-0.0050 \pm 0.0002$	Mean: $-0.0008 \pm 0.0006$
Std Dev: $0.0197 \pm 0.0004$	Std Dev: $0.0159 \pm 0.0002$	Std Dev: $0.0193 \pm 0.0005$



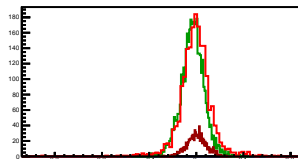
### Cycle 5, Asyms

Entries: 802	Entries: 4779	Entries: 1884
Mean: $-0.0011 \pm 0.0010$	Mean: $-0.0054 \pm 0.0003$	Mean: $-0.0010 \pm 0.0007$
Std Dev: $0.0285 \pm 0.0007$	Std Dev: $0.0162 \pm 0.0002$	Std Dev: $0.0299 \pm 0.0005$



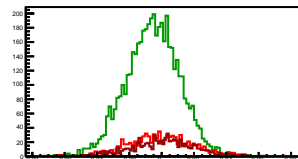
### Cycle 6, Asyms

Entries: 1974	Entries: 3921	Entries: 888
Mean: $-0.0015 \pm 0.0008$	Mean: $-0.0076 \pm 0.0004$	Mean: $0.0005 \pm 0.0007$
Std Dev: $0.0339 \pm 0.0006$	Std Dev: $0.0243 \pm 0.0003$	Std Dev: $0.0203 \pm 0.0005$



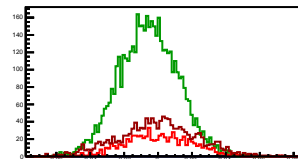
### Cycle 7, Asyms

Entries: 843	Entries: 4800	Entries: 777
Mean: $-0.0007 \pm 0.0007$	Mean: $-0.0055 \pm 0.0002$	Mean: $0.0005 \pm 0.0007$
Std Dev: $0.0203 \pm 0.0005$	Std Dev: $0.0166 \pm 0.0002$	Std Dev: $0.0195 \pm 0.0005$



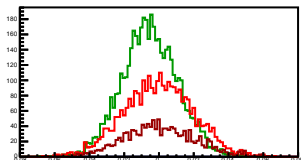
### Cycle 8, Asyms

Entries: 776	Entries: 4827	Entries: 1348
Mean: $0.0001 \pm 0.0007$	Mean: $-0.0056 \pm 0.0002$	Mean: $-0.0003 \pm 0.0006$
Std Dev: $0.0195 \pm 0.0005$	Std Dev: $0.0174 \pm 0.0002$	Std Dev: $0.0230 \pm 0.0004$



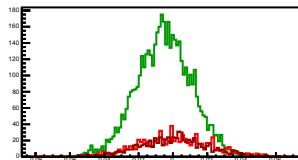
### Cycle 9, Asyms

Entries: 3056	Entries: 4998	Entries: 1341
Mean: $-0.0004 \pm 0.0004$	Mean: $-0.0053 \pm 0.0002$	Mean: $0.0003 \pm 0.0006$
Std Dev: $0.0198 \pm 0.0003$	Std Dev: $0.0161 \pm 0.0002$	Std Dev: $0.0202 \pm 0.0004$



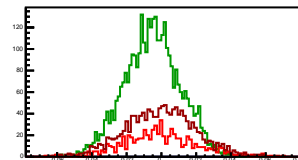
### Cycle 10, Asyms

Entries: 764	Entries: 4761	Entries: 715
Mean: $0.0003 \pm 0.0008$	Mean: $-0.0051 \pm 0.0002$	Mean: $-0.0000 \pm 0.0008$
Std Dev: $0.0207 \pm 0.0005$	Std Dev: $0.0160 \pm 0.0002$	Std Dev: $0.0201 \pm 0.0005$



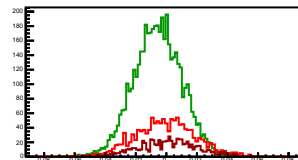
### Cycle 11, Asyms

Entries: 708	Entries: 3552	Entries: 1393
Mean: $-0.0005 \pm 0.0008$	Mean: $-0.0052 \pm 0.0003$	Mean: $-0.0006 \pm 0.0005$
Std Dev: $0.0209 \pm 0.0006$	Std Dev: $0.0160 \pm 0.0002$	Std Dev: $0.0201 \pm 0.0004$



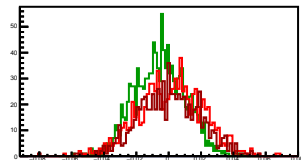
### Cycle 12, Asyms

Entries: 1319	Entries: 4701	Entries: 771
Mean: $-0.0003 \pm 0.0005$	Mean: $-0.0055 \pm 0.0002$	Mean: $0.0010 \pm 0.0007$
Std Dev: $0.0197 \pm 0.0004$	Std Dev: $0.0157 \pm 0.0002$	Std Dev: $0.0191 \pm 0.0005$



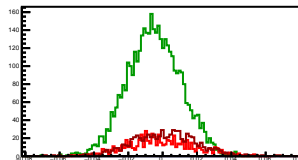
### Cycle 13, Asyms

Entries: 887	Entries: 1242	Entries: 735
Mean: $0.0013 \pm 0.0007$	Mean: $-0.0053 \pm 0.0004$	Mean: $0.0003 \pm 0.0007$
Std Dev: $0.0198 \pm 0.0005$	Std Dev: $0.0157 \pm 0.0003$	Std Dev: $0.0187 \pm 0.0005$



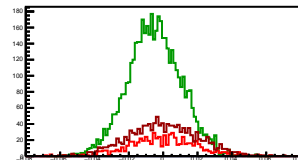
### Cycle 14, Asyms

Entries: 704	Entries: 4060	Entries: 726
Mean: $-0.0008 \pm 0.0007$	Mean: $-0.0050 \pm 0.0002$	Mean: $0.0008 \pm 0.0007$
Std Dev: $0.0198 \pm 0.0005$	Std Dev: $0.0155 \pm 0.0002$	Std Dev: $0.0187 \pm 0.0005$



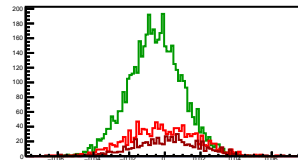
### Cycle 15, Asyms

Entries: 696	Entries: 4758	Entries: 1303
Mean: $-0.0002 \pm 0.0007$	Mean: $-0.0050 \pm 0.0002$	Mean: $-0.0002 \pm 0.0005$
Std Dev: $0.0194 \pm 0.0005$	Std Dev: $0.0156 \pm 0.0002$	Std Dev: $0.0198 \pm 0.0004$



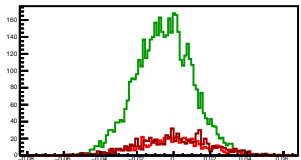
### Cycle 16, Asyms

Entries: 1252	Entries: 4816	Entries: 659
Mean: $-0.0011 \pm 0.0005$	Mean: $-0.0051 \pm 0.0002$	Mean: $0.0013 \pm 0.0007$
Std Dev: $0.0188 \pm 0.0004$	Std Dev: $0.0151 \pm 0.0002$	Std Dev: $0.0190 \pm 0.0005$



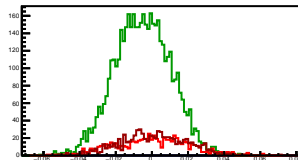
### Cycle 17, Asyms

Entries: 653	Entries: 4775	Entries: 707
Mean: $-0.0005 \pm 0.0007$	Mean: $-0.0050 \pm 0.0002$	Mean: $0.0000 \pm 0.0008$
Std Dev: $0.0187 \pm 0.0005$	Std Dev: $0.0154 \pm 0.0002$	Std Dev: $0.0204 \pm 0.0005$



### Cycle 18, Asyms

Entries: 699	Entries: 4741	Entries: 774
Mean: $0.0002 \pm 0.0008$	Mean: $-0.0051 \pm 0.0002$	Mean: $0.0009 \pm 0.0007$
Std Dev: $0.0203 \pm 0.0005$	Std Dev: $0.0155 \pm 0.0002$	Std Dev: $0.0182 \pm 0.0005$



### Cycle 19, Asyms

Entries: 753	Entries: 4729	Entries: 817
Mean: $-0.0005 \pm 0.0007$	Mean: $-0.0054 \pm 0.0002$	Mean: $-0.0005 \pm 0.0007$
Std Dev: $0.0182 \pm 0.0005$	Std Dev: $0.0156 \pm 0.0002$	Std Dev: $0.0192 \pm 0.0005$

