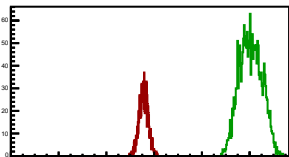
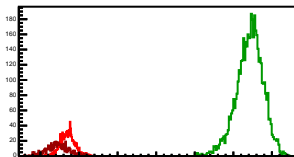


Cycle 1, PosHel

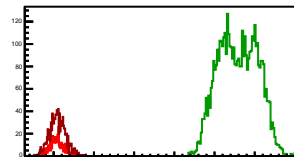
Entries: 0	Entries: 2164	Entries: 981
Mean: 0.0000 +/- 0.0000	Mean: 10.0429 +/- 0.0101	Mean: 5.5606 +/- 0.0061
Std Dev: 0.0000 +/- 0.0000	Std Dev: 0.4681 +/- 0.0071	Std Dev: 0.1925 +/- 0.0043

**Cycle 2, PosHel**

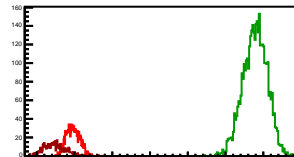
Entries: 981	Entries: 4840	Entries: 539
Mean: 5.7058 +/- 0.0058	Mean: 10.4225 +/- 0.0050	Mean: 5.4502 +/- 0.0126
Std Dev: 0.1801 +/- 0.0041	Std Dev: 0.3490 +/- 0.0035	Std Dev: 0.2922 +/- 0.0089

**Cycle 3, PosHel**

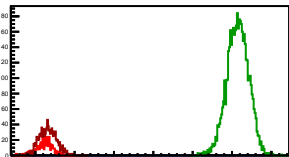
Entries: 515	Entries: 4744	Entries: 1077
Mean: 6.0730 +/- 0.0077	Mean: 10.5850 +/- 0.0070	Mean: 6.0939 +/- 0.0061
Std Dev: 0.1754 +/- 0.0055	Std Dev: 0.4804 +/- 0.0049	Std Dev: 0.2003 +/- 0.0043

**Cycle 4, PosHel**

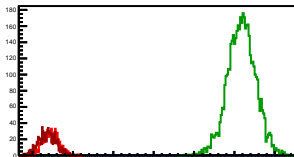
Entries: 1076	Entries: 3942	Entries: 527
Mean: 5.9598 +/- 0.0054	Mean: 10.7836 +/- 0.0051	Mean: 5.4658 +/- 0.0119
Std Dev: 0.1777 +/- 0.0038	Std Dev: 0.3188 +/- 0.0036	Std Dev: 0.2728 +/- 0.0084

**Cycle 5, PosHel**

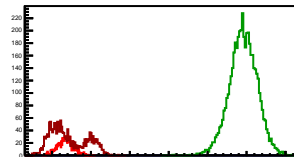
Entries: 506	Entries: 4831	Entries: 1086
Mean: 5.2283 +/- 0.0094	Mean: 10.1462 +/- 0.0039	Mean: 5.3175 +/- 0.0066
Std Dev: 0.2106 +/- 0.0066	Std Dev: 0.2743 +/- 0.0028	Std Dev: 0.2184 +/- 0.0047

**Cycle 6, PosHel**

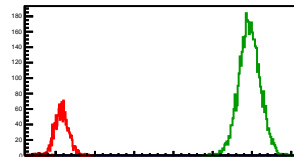
Entries: 860	Entries: 4747	Entries: 907
Mean: 5.4552 +/- 0.0068	Mean: 10.1769 +/- 0.0050	Mean: 5.3714 +/- 0.0071
Std Dev: 0.1589 +/- 0.0048	Std Dev: 0.3477 +/- 0.0036	Std Dev: 0.2145 +/- 0.0050

**Cycle 7, PosHel**

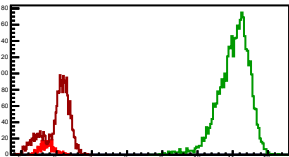
Entries: 915	Entries: 4803	Entries: 1733
Mean: 5.3425 +/- 0.0067	Mean: 9.9127 +/- 0.0052	Mean: 5.4122 +/- 0.0111
Std Dev: 0.2020 +/- 0.0047	Std Dev: 0.3575 +/- 0.0036	Std Dev: 0.4603 +/- 0.0078

**Cycle 8, PosHel**

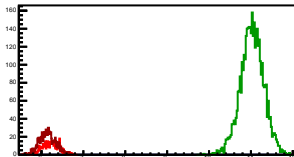
Entries: 1700	Entries: 4352	Entries: 55
Mean: 6.1530 +/- 0.0042	Mean: 10.9409 +/- 0.0041	Mean: 5.5969 +/- 0.0192
Std Dev: 0.1737 +/- 0.0030	Std Dev: 0.2719 +/- 0.0029	Std Dev: 0.1425 +/- 0.0136

**Cycle 9, PosHel**

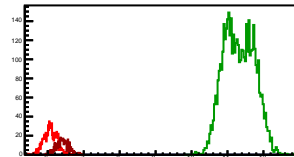
Entries: 515	Entries: 3965	Entries: 2445
Mean: 5.7391 +/- 0.0086	Mean: 11.0287 +/- 0.0070	Mean: 6.0115 +/- 0.0074
Std Dev: 0.1960 +/- 0.0061	Std Dev: 0.4430 +/- 0.0050	Std Dev: 0.3675 +/- 0.0053

**Cycle 10, PosHel**

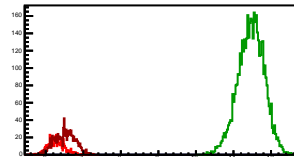
Entries: 474	Entries: 3997	Entries: 895
Mean: 6.2194 +/- 0.0091	Mean: 10.0773 +/- 0.0044	Mean: 6.1494 +/- 0.0065
Std Dev: 0.1991 +/- 0.0065	Std Dev: 0.2759 +/- 0.0031	Std Dev: 0.1938 +/- 0.0046

**Cycle 11, PosHel**

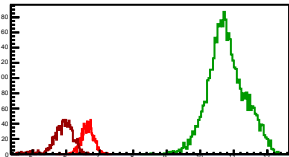
Entries: 907	Entries: 4756	Entries: 540
Mean: 6.0694 +/- 0.0061	Mean: 11.3210 +/- 0.0061	Mean: 6.4058 +/- 0.0074
Std Dev: 0.1830 +/- 0.0043	Std Dev: 0.4233 +/- 0.0043	Std Dev: 0.1722 +/- 0.0052

**Cycle 12, PosHel**

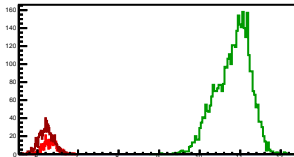
Entries: 515	Entries: 4724	Entries: 988
Mean: 6.2763 +/- 0.0097	Mean: 11.4686 +/- 0.0051	Mean: 6.5084 +/- 0.0086
Std Dev: 0.2198 +/- 0.0068	Std Dev: 0.3487 +/- 0.0036	Std Dev: 0.2691 +/- 0.0061

**Cycle 13, PosHel**

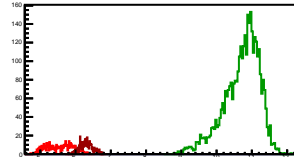
Entries: 1014	Entries: 4711	Entries: 1097
Mean: 6.6369 +/- 0.0058	Mean: 10.7852 +/- 0.0080	Mean: 6.9023 +/- 0.0095
Std Dev: 0.1843 +/- 0.0041	Std Dev: 0.5475 +/- 0.0056	Std Dev: 0.3146 +/- 0.0067

**Cycle 14, PosHel**

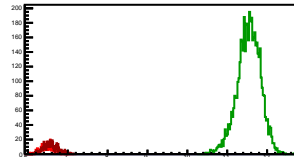
Entries: 484	Entries: 3865	Entries: 923
Mean: 6.3101 +/- 0.0075	Mean: 10.8233 +/- 0.0068	Mean: 6.2133 +/- 0.0059
Std Dev: 0.1644 +/- 0.0053	Std Dev: 0.4207 +/- 0.0048	Std Dev: 0.1781 +/- 0.0041

**Cycle 15, PosHel**

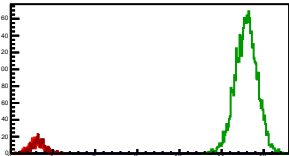
Entries: 478	Entries: 3649	Entries: 474
Mean: 5.5471 +/- 0.0171	Mean: 10.7122 +/- 0.0084	Mean: 6.3026 +/- 0.0080
Std Dev: 0.3748 +/- 0.0121	Std Dev: 0.5095 +/- 0.0060	Std Dev: 0.1742 +/- 0.0057

**Cycle 16, PosHel**

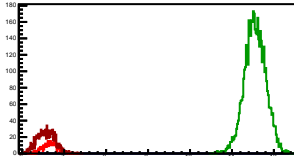
Entries: 450	Entries: 4834	Entries: 529
Mean: 6.4966 +/- 0.0084	Mean: 11.5410 +/- 0.0042	Mean: 6.5750 +/- 0.0081
Std Dev: 0.1776 +/- 0.0059	Std Dev: 0.2929 +/- 0.0030	Std Dev: 0.1857 +/- 0.0057

**Cycle 17, PosHel**

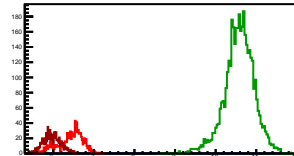
Entries: 505	Entries: 4809	Entries: 466
Mean: 6.6023 +/- 0.0075	Mean: 11.5811 +/- 0.0038	Mean: 6.6601 +/- 0.0080
Std Dev: 0.1695 +/- 0.0053	Std Dev: 0.2615 +/- 0.0027	Std Dev: 0.1730 +/- 0.0057

**Cycle 18, PosHel**

Entries: 464	Entries: 4820	Entries: 971
Mean: 6.6723 +/- 0.0080	Mean: 11.5508 +/- 0.0037	Mean: 6.5663 +/- 0.0058
Std Dev: 0.1729 +/- 0.0057	Std Dev: 0.2539 +/- 0.0026	Std Dev: 0.2132 +/- 0.0048

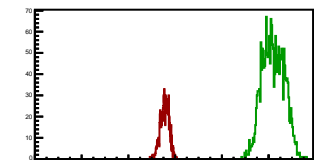
**Cycle 19, PosHel**

Entries: 991	Entries: 3969	Entries: 950
Mean: 6.4228 +/- 0.0098	Mean: 10.5800 +/- 0.0058	Mean: 5.9715 +/- 0.0068
Std Dev: 0.3084 +/- 0.0069	Std Dev: 0.3548 +/- 0.0041	Std Dev: 0.2107 +/- 0.0049

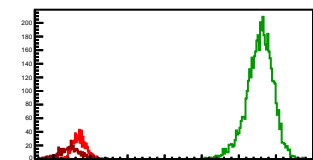


Cycle 1, NegHel

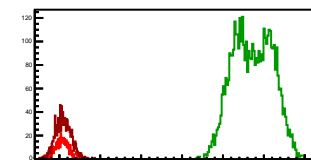
Entries: 0	Entries: 2164	Entries: 981
Mean: 0.0000 +/- 0.0000	Mean: 10.1960 +/- 0.0100	Mean: 5.5553 +/- 0.0059
Std Dev: 0.0000 +/- 0.0000	Std Dev: 0.4647 +/- 0.0071	Std Dev: 0.1858 +/- 0.0042

**Cycle 2, NegHel**

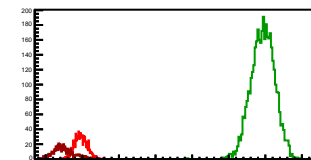
Entries: 981	Entries: 4840	Entries: 539
Mean: 5.7057 +/- 0.0057	Mean: 10.5631 +/- 0.0051	Mean: 5.4527 +/- 0.0125
Std Dev: 0.1775 +/- 0.0040	Std Dev: 0.3580 +/- 0.0036	Std Dev: 0.2898 +/- 0.0088

**Cycle 3, NegHel**

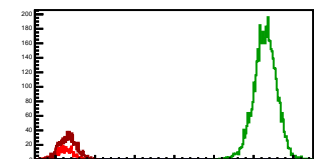
Entries: 515	Entries: 4744	Entries: 1077
Mean: 6.0717 +/- 0.0080	Mean: 10.7261 +/- 0.0070	Mean: 6.0949 +/- 0.0058
Std Dev: 0.1821 +/- 0.0057	Std Dev: 0.4829 +/- 0.0050	Std Dev: 0.1903 +/- 0.0041

**Cycle 4, NegHel**

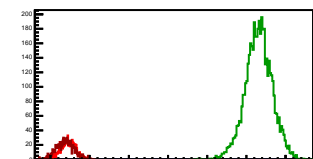
Entries: 1076	Entries: 3942	Entries: 527
Mean: 5.9597 +/- 0.0052	Mean: 10.9315 +/- 0.0051	Mean: 5.4818 +/- 0.0121
Std Dev: 0.1713 +/- 0.0037	Std Dev: 0.3223 +/- 0.0036	Std Dev: 0.2784 +/- 0.0086

**Cycle 5, NegHel**

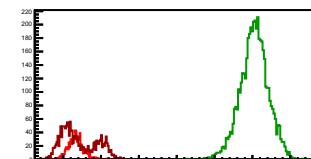
Entries: 506	Entries: 4831	Entries: 1086
Mean: 5.2312 +/- 0.0094	Mean: 10.2917 +/- 0.0041	Mean: 5.3113 +/- 0.0066
Std Dev: 0.2119 +/- 0.0067	Std Dev: 0.2846 +/- 0.0028	Std Dev: 0.2170 +/- 0.0047

**Cycle 6, NegHel**

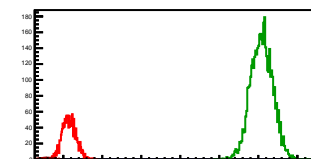
Entries: 860	Entries: 4747	Entries: 907
Mean: 5.4483 +/- 0.0068	Mean: 10.3123 +/- 0.0050	Mean: 5.3748 +/- 0.0073
Std Dev: 0.1596 +/- 0.0048	Std Dev: 0.3432 +/- 0.0035	Std Dev: 0.2197 +/- 0.0052

**Cycle 7, NegHel**

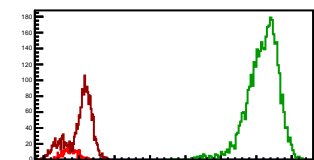
Entries: 915	Entries: 4803	Entries: 1733
Mean: 5.3374 +/- 0.0065	Mean: 10.0470 +/- 0.0053	Mean: 5.4069 +/- 0.0110
Std Dev: 0.1967 +/- 0.0046	Std Dev: 0.3698 +/- 0.0038	Std Dev: 0.4594 +/- 0.0078

**Cycle 8, NegHel**

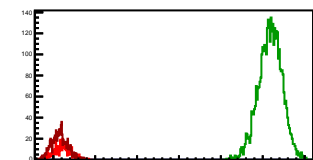
Entries: 1700	Entries: 4352	Entries: 55
Mean: 6.1500 +/- 0.0043	Mean: 11.0872 +/- 0.0042	Mean: 5.5894 +/- 0.0159
Std Dev: 0.1755 +/- 0.0030	Std Dev: 0.2793 +/- 0.0030	Std Dev: 0.1180 +/- 0.0113

**Cycle 9, NegHel**

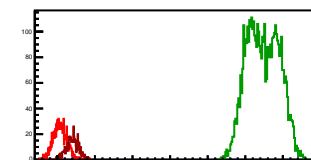
Entries: 515	Entries: 3965	Entries: 2445
Mean: 5.7482 +/- 0.0091	Mean: 11.1786 +/- 0.0071	Mean: 6.0122 +/- 0.0074
Std Dev: 0.2063 +/- 0.0064	Std Dev: 0.4443 +/- 0.0050	Std Dev: 0.3639 +/- 0.0052

**Cycle 10, NegHel**

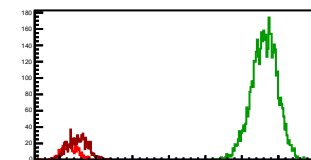
Entries: 474	Entries: 3997	Entries: 895
Mean: 6.2154 +/- 0.0094	Mean: 11.1793 +/- 0.0045	Mean: 6.1480 +/- 0.0064
Std Dev: 0.2044 +/- 0.0068	Std Dev: 0.2814 +/- 0.0031	Std Dev: 0.1927 +/- 0.0046

**Cycle 11, NegHel**

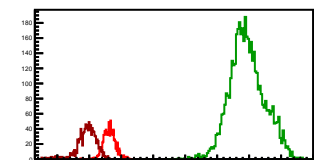
Entries: 907	Entries: 4756	Entries: 540
Mean: 6.0694 +/- 0.0060	Mean: 11.4712 +/- 0.0062	Mean: 6.4035 +/- 0.0071
Std Dev: 0.1799 +/- 0.0042	Std Dev: 0.4247 +/- 0.0044	Std Dev: 0.1651 +/- 0.0050

**Cycle 12, NegHel**

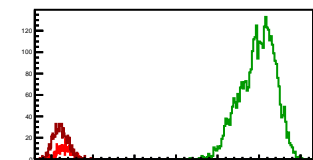
Entries: 515	Entries: 4724	Entries: 988
Mean: 6.2957 +/- 0.0097	Mean: 11.6188 +/- 0.0051	Mean: 6.4959 +/- 0.0086
Std Dev: 0.2195 +/- 0.0068	Std Dev: 0.3534 +/- 0.0036	Std Dev: 0.2706 +/- 0.0061

**Cycle 13, NegHel**

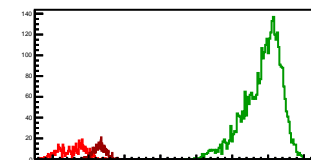
Entries: 1014	Entries: 4711	Entries: 1097
Mean: 6.6314 +/- 0.0058	Mean: 10.9394 +/- 0.0080	Mean: 5.9247 +/- 0.0095
Std Dev: 0.1848 +/- 0.0041	Std Dev: 0.5459 +/- 0.0056	Std Dev: 0.3151 +/- 0.0067

**Cycle 14, NegHel**

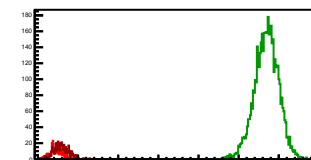
Entries: 484	Entries: 3865	Entries: 923
Mean: 6.3118 +/- 0.0074	Mean: 10.9671 +/- 0.0067	Mean: 6.2193 +/- 0.0059
Std Dev: 0.1637 +/- 0.0053	Std Dev: 0.4175 +/- 0.0047	Std Dev: 0.1793 +/- 0.0042

**Cycle 15, NegHel**

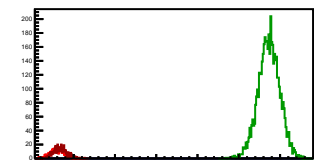
Entries: 478	Entries: 3649	Entries: 474
Mean: 5.5375 +/- 0.0164	Mean: 10.8558 +/- 0.0085	Mean: 6.3072 +/- 0.0074
Std Dev: 0.3593 +/- 0.0116	Std Dev: 0.5133 +/- 0.0060	Std Dev: 0.1620 +/- 0.0053

**Cycle 16, NegHel**

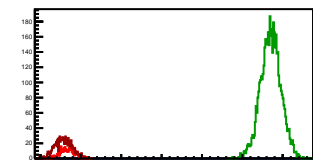
Entries: 450	Entries: 4834	Entries: 529
Mean: 6.4678 +/- 0.0079	Mean: 11.6938 +/- 0.0043	Mean: 6.5776 +/- 0.0080
Std Dev: 0.1686 +/- 0.0056	Std Dev: 0.2979 +/- 0.0030	Std Dev: 0.1837 +/- 0.0056

**Cycle 17, NegHel**

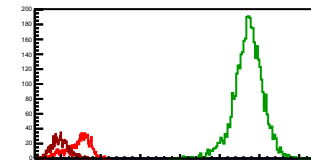
Entries: 505	Entries: 4809	Entries: 466
Mean: 6.6123 +/- 0.0076	Mean: 11.7301 +/- 0.0038	Mean: 6.6622 +/- 0.0076
Std Dev: 0.1715 +/- 0.0054	Std Dev: 0.2619 +/- 0.0027	Std Dev: 0.1647 +/- 0.0054

**Cycle 18, NegHel**

Entries: 464	Entries: 4820	Entries: 971
Mean: 6.6663 +/- 0.0082	Mean: 11.7020 +/- 0.0036	Mean: 6.5653 +/- 0.0067
Std Dev: 0.1766 +/- 0.0059	Std Dev: 0.2521 +/- 0.0026	Std Dev: 0.2084 +/- 0.0047

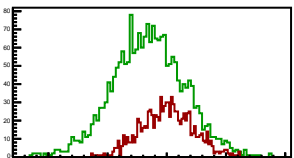
**Cycle 19, NegHel**

Entries: 991	Entries: 3969	Entries: 950
Mean: 6.4316 +/- 0.0097	Mean: 10.7184 +/- 0.0059	Mean: 5.9808 +/- 0.0069
Std Dev: 0.3055 +/- 0.0069	Std Dev: 0.3708 +/- 0.0042	Std Dev: 0.2134 +/- 0.0049



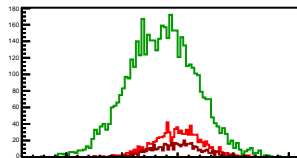
Cycle 1, Diffs

Entries: 0	Entries: 2164	Entries: 981
Mean: 0.0000 +/- 0.0000	Mean: -0.1530 +/- 0.0066	Mean: 0.0053 +/- 0.0070
Std Dev: 0.0000 +/- 0.0000	Std Dev: 0.3047 +/- 0.0046	Std Dev: 0.2177 +/- 0.0049



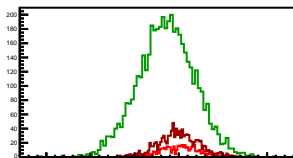
Cycle 2, Diffs

Entries: 981	Entries: 4840	Entries: 539
Mean: 0.0001 +/- 0.0069	Mean: -0.1406 +/- 0.0044	Mean: -0.0025 +/- 0.0096
Std Dev: 0.2176 +/- 0.0049	Std Dev: 0.3067 +/- 0.0031	Std Dev: 0.2236 +/- 0.0068



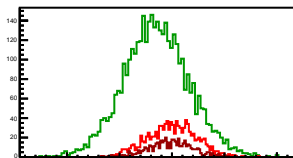
Cycle 3, Diffs

Entries: 515	Entries: 4744	Entries: 1077
Mean: 0.0014 +/- 0.0100	Mean: -0.1411 +/- 0.0046	Mean: -0.0011 +/- 0.0070
Std Dev: 0.2272 +/- 0.0071	Std Dev: 0.3164 +/- 0.0032	Std Dev: 0.2294 +/- 0.0049



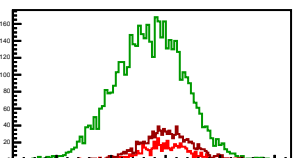
Cycle 4, Diffs

Entries: 1076	Entries: 3942	Entries: 527
Mean: 0.0001 +/- 0.0069	Mean: -0.1479 +/- 0.0050	Mean: -0.0160 +/- 0.0092
Std Dev: 0.2273 +/- 0.0049	Std Dev: 0.3114 +/- 0.0035	Std Dev: 0.2111 +/- 0.0065



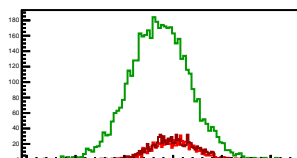
Cycle 5, Diffs

Entries: 506	Entries: 4831	Entries: 1086
Mean: -0.0029 +/- 0.0093	Mean: -0.1455 +/- 0.0045	Mean: 0.0062 +/- 0.0066
Std Dev: 0.2098 +/- 0.0066	Std Dev: 0.3104 +/- 0.0032	Std Dev: 0.2182 +/- 0.0047



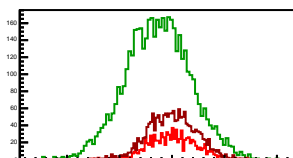
Cycle 6, Diffs

Entries: 860	Entries: 4747	Entries: 907
Mean: 0.0069 +/- 0.0072	Mean: -0.1354 +/- 0.0044	Mean: -0.0034 +/- 0.0073
Std Dev: 0.2126 +/- 0.0051	Std Dev: 0.3040 +/- 0.0031	Std Dev: 0.2193 +/- 0.0051



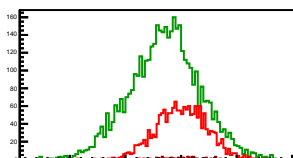
Cycle 7, Diffs

Entries: 915	Entries: 4803	Entries: 1733
Mean: 0.0051 +/- 0.0073	Mean: -0.1344 +/- 0.0044	Mean: 0.0053 +/- 0.0054
Std Dev: 0.2195 +/- 0.0051	Std Dev: 0.3065 +/- 0.0031	Std Dev: 0.2233 +/- 0.0038



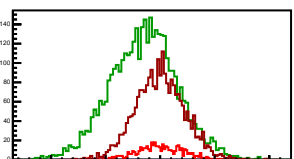
Cycle 8, Diffs

Entries: 1700	Entries: 4352	Entries: 55
Mean: 0.0030 +/- 0.0054	Mean: -0.1463 +/- 0.0048	Mean: 0.0075 +/- 0.0254
Std Dev: 0.2247 +/- 0.0039	Std Dev: 0.3155 +/- 0.0034	Std Dev: 0.1887 +/- 0.0180



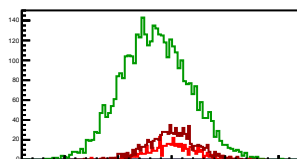
Cycle 9, Diffs

Entries: 515	Entries: 3965	Entries: 2445
Mean: -0.0091 +/- 0.0095	Mean: -0.1499 +/- 0.0049	Mean: -0.0008 +/- 0.0046
Std Dev: 0.2154 +/- 0.0067	Std Dev: 0.3073 +/- 0.0035	Std Dev: 0.2257 +/- 0.0032



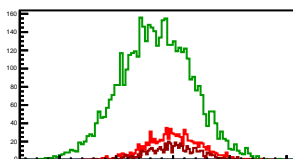
Cycle 10, Diffs

Entries: 474	Entries: 3997	Entries: 895
Mean: 0.0040 +/- 0.0106	Mean: -0.1520 +/- 0.0050	Mean: 0.0015 +/- 0.0075
Std Dev: 0.2307 +/- 0.0075	Std Dev: 0.3167 +/- 0.0035	Std Dev: 0.2258 +/- 0.0053



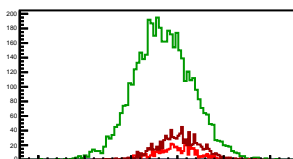
Cycle 11, Diffs

Entries: 907	Entries: 4756	Entries: 540
Mean: 0.0000 +/- 0.0076	Mean: -0.1502 +/- 0.0046	Mean: 0.0023 +/- 0.0092
Std Dev: 0.2305 +/- 0.0054	Std Dev: 0.3158 +/- 0.0032	Std Dev: 0.2147 +/- 0.0065



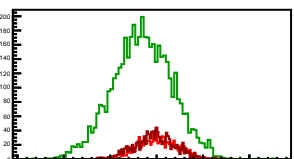
Cycle 12, Diffs

Entries: 515	Entries: 4724	Entries: 988
Mean: -0.0194 +/- 0.0103	Mean: -0.1522 +/- 0.0046	Mean: 0.0125 +/- 0.0074
Std Dev: 0.2332 +/- 0.0073	Std Dev: 0.3143 +/- 0.0032	Std Dev: 0.2318 +/- 0.0052



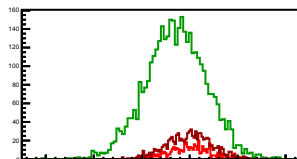
Cycle 13, Diffs

Entries: 1014	Entries: 4711	Entries: 1097
Mean: 0.0056 +/- 0.0069	Mean: -0.1543 +/- 0.0046	Mean: -0.0024 +/- 0.0065
Std Dev: 0.2211 +/- 0.0049	Std Dev: 0.3174 +/- 0.0033	Std Dev: 0.2151 +/- 0.0046



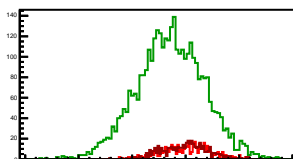
Cycle 14, Diffs

Entries: 484	Entries: 3865	Entries: 923
Mean: 0.0018 +/- 0.0103	Mean: -0.1439 +/- 0.0051	Mean: -0.0060 +/- 0.0075
Std Dev: 0.2266 +/- 0.0073	Std Dev: 0.3155 +/- 0.0036	Std Dev: 0.2287 +/- 0.0053



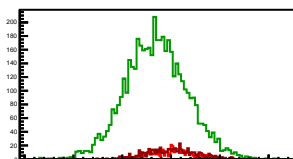
Cycle 15, Diffs

Entries: 478	Entries: 3649	Entries: 474
Mean: 0.0096 +/- 0.0106	Mean: -0.1437 +/- 0.0052	Mean: -0.0046 +/- 0.0098
Std Dev: 0.2312 +/- 0.0075	Std Dev: 0.3138 +/- 0.0037	Std Dev: 0.2134 +/- 0.0069



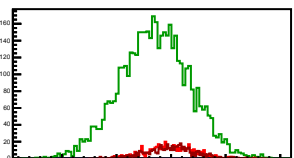
Cycle 16, Diffs

Entries: 450	Entries: 4834	Entries: 529
Mean: 0.0228 +/- 0.0103	Mean: -0.1529 +/- 0.0045	Mean: -0.0027 +/- 0.0108
Std Dev: 0.2186 +/- 0.0073	Std Dev: 0.3141 +/- 0.0032	Std Dev: 0.2474 +/- 0.0076



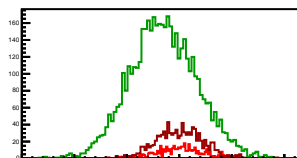
Cycle 17, Diffs

Entries: 505	Entries: 4809	Entries: 466
Mean: -0.0100 +/- 0.0100	Mean: -0.1490 +/- 0.0046	Mean: -0.0021 +/- 0.0102
Std Dev: 0.2245 +/- 0.0071	Std Dev: 0.3162 +/- 0.0032	Std Dev: 0.2194 +/- 0.0072



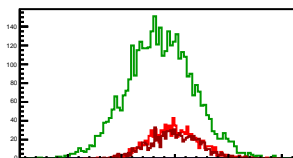
Cycle 18, Diffs

Entries: 464	Entries: 4820	Entries: 971
Mean: 0.0059 +/- 0.0102	Mean: -0.1512 +/- 0.0046	Mean: 0.0010 +/- 0.0072
Std Dev: 0.2293 +/- 0.0072	Std Dev: 0.3195 +/- 0.0033	Std Dev: 0.2231 +/- 0.0051



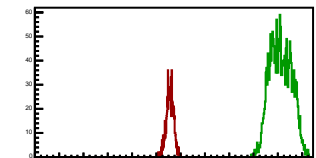
Cycle 19, Diffs

Entries: 991	Entries: 3969	Entries: 950
Mean: -0.0089 +/- 0.0072	Mean: -0.1375 +/- 0.0049	Mean: -0.0093 +/- 0.0075
Std Dev: 0.2262 +/- 0.0051	Std Dev: 0.3118 +/- 0.0035	Std Dev: 0.2318 +/- 0.0053



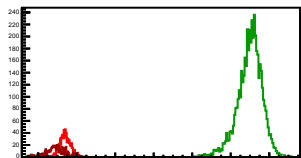
Cycle 1, Sums

Entries: 0	Entries: 2164	Entries: 981
Mean: 0.0000 +/- 0.0000	Mean: 20.2389 +/- 0.0190	Mean: 11.1160 +/- 0.0099
Std Dev: 0.0000 +/- 0.0000	Std Dev: 0.8816 +/- 0.0134	Std Dev: 0.3095 +/- 0.0070



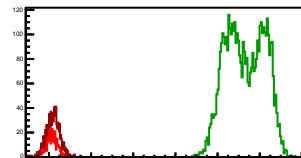
Cycle 2, Sums

Entries: 981	Entries: 4840	Entries: 539
Mean: 11.4115 +/- 0.0091	Mean: 20.9855 +/- 0.0092	Mean: 10.9029 +/- 0.0231
Std Dev: 0.2839 +/- 0.0064	Std Dev: 0.6371 +/- 0.0065	Std Dev: 0.5373 +/- 0.0164



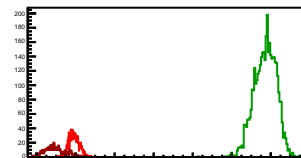
Cycle 3, Sums

Entries: 515	Entries: 4744	Entries: 1077
Mean: 12.1447 +/- 0.0122	Mean: 21.3111 +/- 0.0132	Mean: 12.1888 +/- 0.0096
Std Dev: 0.2761 +/- 0.0086	Std Dev: 0.9099 +/- 0.0093	Std Dev: 0.3164 +/- 0.0068



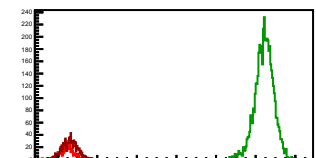
Cycle 4, Sums

Entries: 1076	Entries: 3942	Entries: 527
Mean: 11.9195 +/- 0.0081	Mean: 21.7151 +/- 0.0089	Mean: 10.9475 +/- 0.0222
Std Dev: 0.2650 +/- 0.0057	Std Dev: 0.5603 +/- 0.0063	Std Dev: 0.5092 +/- 0.0157



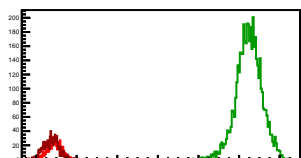
Cycle 5, Sums

Entries: 506	Entries: 4831	Entries: 1086
Mean: 10.4595 +/- 0.0163	Mean: 20.4379 +/- 0.0067	Mean: 10.6288 +/- 0.0114
Std Dev: 0.3668 +/- 0.0115	Std Dev: 0.4650 +/- 0.0047	Std Dev: 0.3767 +/- 0.0081



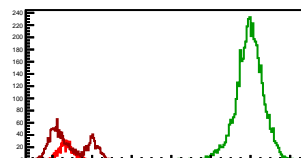
Cycle 6, Sums

Entries: 860	Entries: 4747	Entries: 907
Mean: 10.9035 +/- 0.0115	Mean: 20.4693 +/- 0.0090	Mean: 10.7462 +/- 0.0124
Std Dev: 0.3370 +/- 0.0081	Std Dev: 0.6205 +/- 0.0064	Std Dev: 0.3748 +/- 0.0088



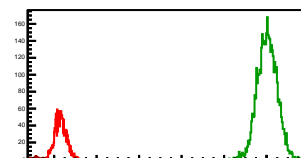
Cycle 7, Sums

Entries: 915	Entries: 4803	Entries: 1733
Mean: 10.6799 +/- 0.0110	Mean: 19.9597 +/- 0.0095	Mean: 10.8190 +/- 0.0214
Std Dev: 0.3329 +/- 0.0078	Std Dev: 0.6597 +/- 0.0067	Std Dev: 0.8922 +/- 0.0152



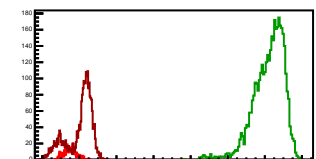
Cycle 8, Sums

Entries: 1700	Entries: 4352	Entries: 55
Mean: 12.3030 +/- 0.0065	Mean: 22.0281 +/- 0.0069	Mean: 11.1864 +/- 0.0244
Std Dev: 0.2674 +/- 0.0046	Std Dev: 0.4533 +/- 0.0049	Std Dev: 0.1813 +/- 0.0173



Cycle 9, Sums

Entries: 515	Entries: 3965	Entries: 2445
Mean: 11.4874 +/- 0.0150	Mean: 22.2073 +/- 0.0132	Mean: 12.0237 +/- 0.0141
Std Dev: 0.3399 +/- 0.0106	Std Dev: 0.8324 +/- 0.0093	Std Dev: 0.6957 +/- 0.0099



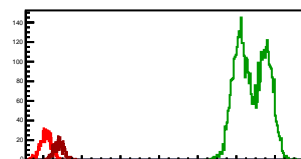
Cycle 10, Sums

Entries: 474	Entries: 3997	Entries: 895
Mean: 12.4348 +/- 0.0152	Mean: 22.2066 +/- 0.0073	Mean: 12.2974 +/- 0.0105
Std Dev: 0.3311 +/- 0.0108	Std Dev: 0.4586 +/- 0.0051	Std Dev: 0.3137 +/- 0.0074



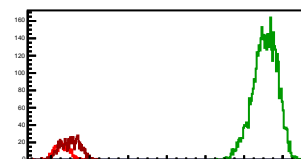
Cycle 11, Sums

Entries: 907	Entries: 4756	Entries: 540
Mean: 12.1388 +/- 0.0093	Mean: 22.7922 +/- 0.0114	Mean: 12.8093 +/- 0.0112
Std Dev: 0.2804 +/- 0.0066	Std Dev: 0.7870 +/- 0.0081	Std Dev: 0.2602 +/- 0.0079



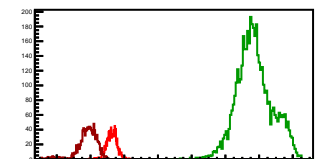
Cycle 12, Sums

Entries: 515	Entries: 4724	Entries: 988
Mean: 12.5719 +/- 0.0164	Mean: 23.0853 +/- 0.0091	Mean: 13.0042 +/- 0.0155
Std Dev: 0.3723 +/- 0.0116	Std Dev: 0.6279 +/- 0.0065	Std Dev: 0.4875 +/- 0.0110



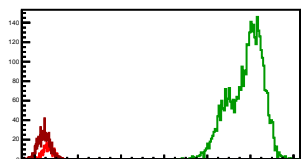
Cycle 13, Sums

Entries: 1014	Entries: 4711	Entries: 1097
Mean: 13.2683 +/- 0.0093	Mean: 23.1112 +/- 0.0152	Mean: 13.3220 +/- 0.0179
Std Dev: 0.2956 +/- 0.0066	Std Dev: 1.0463 +/- 0.0108	Std Dev: 0.5917 +/- 0.0126



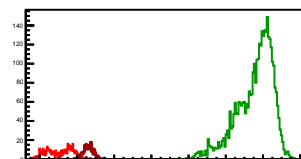
Cycle 14, Sums

Entries: 484	Entries: 3865	Entries: 923
Mean: 12.6219 +/- 0.0108	Mean: 23.2529 +/- 0.0125	Mean: 13.1316 +/- 0.0090
Std Dev: 0.2372 +/- 0.0076	Std Dev: 0.7766 +/- 0.0088	Std Dev: 0.2746 +/- 0.0064



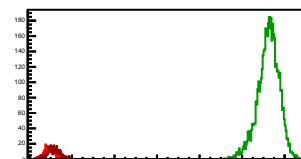
Cycle 15, Sums

Entries: 478	Entries: 3649	Entries: 474
Mean: 11.0846 +/- 0.0319	Mean: 21.5680 +/- 0.0161	Mean: 12.6098 +/- 0.0119
Std Dev: 0.6970 +/- 0.0225	Std Dev: 0.9735 +/- 0.0114	Std Dev: 0.2601 +/- 0.0084



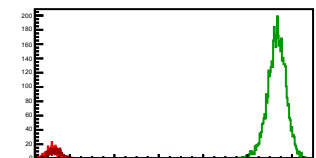
Cycle 16, Sums

Entries: 450	Entries: 4834	Entries: 529
Mean: 12.9584 +/- 0.0127	Mean: 23.2348 +/- 0.0072	Mean: 13.1526 +/- 0.0119
Std Dev: 0.2686 +/- 0.0090	Std Dev: 0.5004 +/- 0.0051	Std Dev: 0.2744 +/- 0.0084



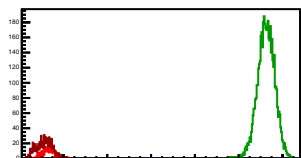
Cycle 17, Sums

Entries: 505	Entries: 4809	Entries: 466
Mean: 13.2147 +/- 0.0114	Mean: 23.3112 +/- 0.0060	Mean: 13.3220 +/- 0.0119
Std Dev: 0.2567 +/- 0.0081	Std Dev: 0.4172 +/- 0.0043	Std Dev: 0.2569 +/- 0.0084



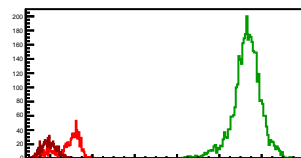
Cycle 18, Sums

Entries: 464	Entries: 4820	Entries: 971
Mean: 12.6219 +/- 0.0126	Mean: 23.2529 +/- 0.0057	Mean: 13.1316 +/- 0.0115
Std Dev: 0.2713 +/- 0.0089	Std Dev: 0.3923 +/- 0.0040	Std Dev: 0.3577 +/- 0.0081



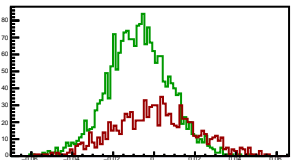
Cycle 19, Sums

Entries: 991	Entries: 3969	Entries: 950
Mean: 12.8544 +/- 0.0181	Mean: 21.2893 +/- 0.0106	Mean: 11.9522 +/- 0.0115
Std Dev: 0.5706 +/- 0.0128	Std Dev: 0.6663 +/- 0.0075	Std Dev: 0.3551 +/- 0.0081



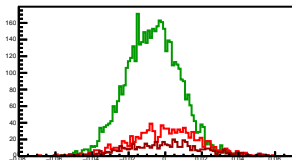
Cycle 1, Asyms

Entries: 0	Entries: 2164	Entries: 981
Mean: 0.0000 +/- 0.0000	Mean: -0.0076 +/- 0.0003	Mean: 0.0005 +/- 0.0006
Std Dev: 0.0000 +/- 0.0000	Std Dev: 0.0151 +/- 0.0002	Std Dev: 0.0196 +/- 0.0004



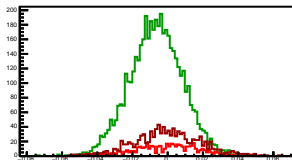
Cycle 2, Asyms

Entries: 981	Entries: 4840	Entries: 539
Mean: 0.0000 +/- 0.0006	Mean: -0.0067 +/- 0.0002	Mean: -0.0002 +/- 0.0009
Std Dev: 0.0190 +/- 0.0004	Std Dev: 0.0146 +/- 0.0001	Std Dev: 0.0205 +/- 0.0006



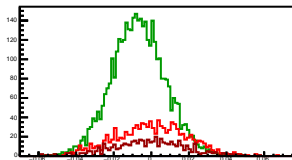
Cycle 3, Asyms

Entries: 515	Entries: 4744	Entries: 1077
Mean: 0.0001 +/- 0.0008	Mean: -0.0066 +/- 0.0002	Mean: -0.0001 +/- 0.0006
Std Dev: 0.0187 +/- 0.0006	Std Dev: 0.0148 +/- 0.0002	Std Dev: 0.0188 +/- 0.0004



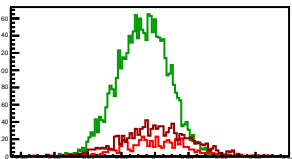
Cycle 4, Asyms

Entries: 1076	Entries: 3942	Entries: 527
Mean: -0.0000 +/- 0.0006	Mean: -0.0068 +/- 0.0002	Mean: -0.0014 +/- 0.0008
Std Dev: 0.0190 +/- 0.0004	Std Dev: 0.0143 +/- 0.0002	Std Dev: 0.0192 +/- 0.0006



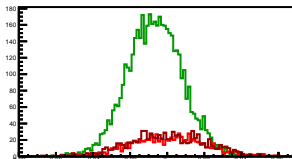
Cycle 5, Asyms

Entries: 506	Entries: 4831	Entries: 1086
Mean: -0.0003 +/- 0.0009	Mean: -0.0071 +/- 0.0002	Mean: 0.0006 +/- 0.0006
Std Dev: 0.0201 +/- 0.0006	Std Dev: 0.0152 +/- 0.0002	Std Dev: 0.0205 +/- 0.0004



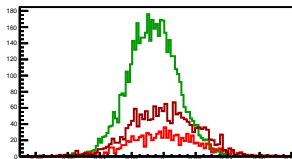
Cycle 6, Asyms

Entries: 860	Entries: 4747	Entries: 907
Mean: 0.0006 +/- 0.0007	Mean: -0.0066 +/- 0.0002	Mean: -0.0003 +/- 0.0007
Std Dev: 0.0194 +/- 0.0005	Std Dev: 0.0148 +/- 0.0002	Std Dev: 0.0204 +/- 0.0005



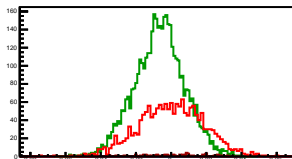
Cycle 7, Asyms

Entries: 915	Entries: 4803	Entries: 1733
Mean: 0.0005 +/- 0.0007	Mean: -0.0067 +/- 0.0002	Mean: 0.0005 +/- 0.0005
Std Dev: 0.0205 +/- 0.0005	Std Dev: 0.0153 +/- 0.0002	Std Dev: 0.0208 +/- 0.0004



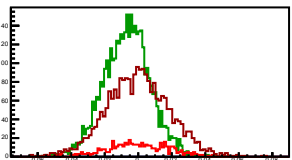
Cycle 8, Asyms

Entries: 1700	Entries: 4352	Entries: 55
Mean: 0.0002 +/- 0.0004	Mean: -0.0066 +/- 0.0002	Mean: 0.0006 +/- 0.0023
Std Dev: 0.0182 +/- 0.0003	Std Dev: 0.0142 +/- 0.0002	Std Dev: 0.0169 +/- 0.0016



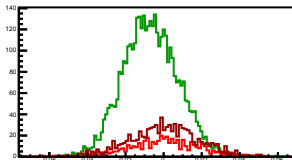
Cycle 9, Asyms

Entries: 515	Entries: 3965	Entries: 2445
Mean: -0.0008 +/- 0.0008	Mean: -0.0068 +/- 0.0002	Mean: -0.0001 +/- 0.0004
Std Dev: 0.0187 +/- 0.0006	Std Dev: 0.0139 +/- 0.0002	Std Dev: 0.0189 +/- 0.0003



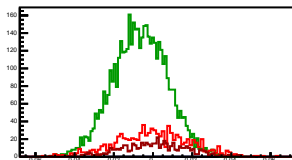
Cycle 10, Asyms

Entries: 474	Entries: 3997	Entries: 895
Mean: 0.0003 +/- 0.0009	Mean: -0.0068 +/- 0.0002	Mean: 0.0001 +/- 0.0006
Std Dev: 0.0186 +/- 0.0006	Std Dev: 0.0143 +/- 0.0002	Std Dev: 0.0184 +/- 0.0004



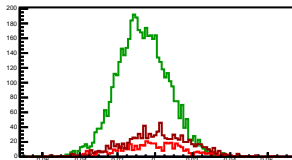
Cycle 11, Asyms

Entries: 907	Entries: 4756	Entries: 540
Mean: -0.0000 +/- 0.0006	Mean: -0.0066 +/- 0.0002	Mean: 0.0002 +/- 0.0007
Std Dev: 0.0190 +/- 0.0004	Std Dev: 0.0139 +/- 0.0001	Std Dev: 0.0168 +/- 0.0005



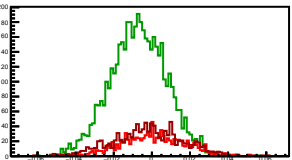
Cycle 12, Asyms

Entries: 515	Entries: 4724	Entries: 988
Mean: -0.0015 +/- 0.0008	Mean: -0.0066 +/- 0.0002	Mean: 0.0010 +/- 0.0006
Std Dev: 0.0185 +/- 0.0006	Std Dev: 0.0136 +/- 0.0001	Std Dev: 0.0178 +/- 0.0004



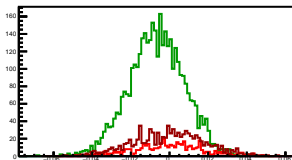
Cycle 13, Asyms

Entries: 1014	Entries: 4711	Entries: 1097
Mean: 0.0004 +/- 0.0005	Mean: -0.0064 +/- 0.0002	Mean: -0.0019 +/- 0.0006
Std Dev: 0.0166 +/- 0.0004	Std Dev: 0.0146 +/- 0.0002	Std Dev: 0.0182 +/- 0.0004



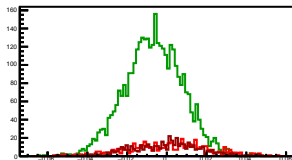
Cycle 14, Asyms

Entries: 484	Entries: 3865	Entries: 923
Mean: 0.0001 +/- 0.0008	Mean: -0.0065 +/- 0.0002	Mean: 0.0001 +/- 0.0006
Std Dev: 0.0179 +/- 0.0006	Std Dev: 0.0145 +/- 0.0002	Std Dev: 0.0184 +/- 0.0004



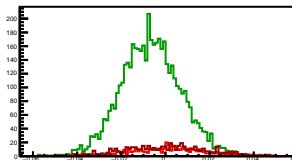
Cycle 15, Asyms

Entries: 478	Entries: 3649	Entries: 474
Mean: 0.0008 +/- 0.0010	Mean: -0.0067 +/- 0.0002	Mean: -0.0004 +/- 0.0008
Std Dev: 0.0209 +/- 0.0007	Std Dev: 0.0146 +/- 0.0002	Std Dev: 0.0189 +/- 0.0005



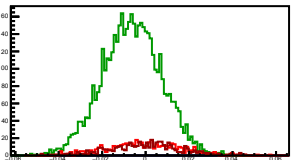
Cycle 16, Asyms

Entries: 450	Entries: 4834	Entries: 529
Mean: 0.0017 +/- 0.0008	Mean: -0.0066 +/- 0.0002	Mean: -0.0002 +/- 0.0008
Std Dev: 0.0168 +/- 0.0006	Std Dev: 0.0135 +/- 0.0001	Std Dev: 0.0188 +/- 0.0006



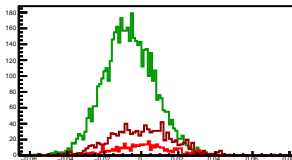
Cycle 17, Asyms

Entries: 505	Entries: 4809	Entries: 466
Mean: -0.0008 +/- 0.0008	Mean: -0.0064 +/- 0.0002	Mean: -0.0002 +/- 0.0008
Std Dev: 0.0170 +/- 0.0005	Std Dev: 0.0136 +/- 0.0001	Std Dev: 0.0164 +/- 0.0005



Cycle 18, Asyms

Entries: 464	Entries: 4820	Entries: 971
Mean: 0.0005 +/- 0.0008	Mean: -0.0065 +/- 0.0002	Mean: 0.0001 +/- 0.0005
Std Dev: 0.0165 +/- 0.0005	Std Dev: 0.0137 +/- 0.0001	Std Dev: 0.0170 +/- 0.0004



Cycle 19, Asyms

Entries: 991	Entries: 3969	Entries: 950
Mean: -0.0007 +/- 0.0006	Mean: -0.0065 +/- 0.0002	Mean: -0.0008 +/- 0.0006
Std Dev: 0.0176 +/- 0.0004	Std Dev: 0.0146 +/- 0.0002	Std Dev: 0.0193 +/- 0.0004

