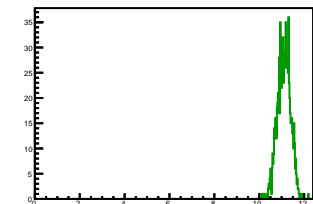


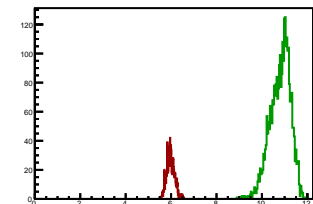
### Cycle 1, PosHel

Entries: 0	Entries: 916	Entries: 0
Mean: 0.0000 +/- 0.0000	Mean: 11.1023 +/- 0.0096	Mean: 0.0000 +/- 0.0000
Std Dev: 0.0000 +/- 0.0000	Std Dev: 0.2920 +/- 0.0068	Std Dev: 0.0000 +/- 0.0000



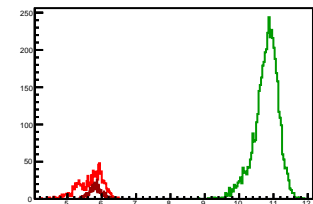
### Cycle 2, PosHel

Entries: 0	Entries: 3095	Entries: 1106
Mean: 0.0000 +/- 0.0000	Mean: 10.8106 +/- 0.0080	Mean: 5.9818 +/- 0.0052
Std Dev: 0.0000 +/- 0.0000	Std Dev: 0.4431 +/- 0.0056	Std Dev: 0.1736 +/- 0.0037



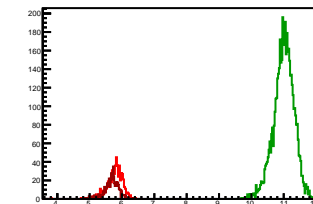
### Cycle 3, PosHel

Entries: 1081	Entries: 4728	Entries: 598
Mean: 5.6706 +/- 0.0111	Mean: 10.7906 +/- 0.0052	Mean: 5.8179 +/- 0.0074
Std Dev: 0.3661 +/- 0.0079	Std Dev: 0.3542 +/- 0.0038	Std Dev: 0.1798 +/- 0.0052



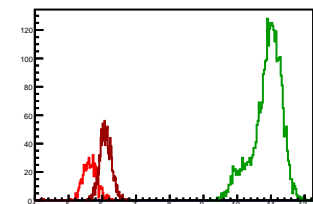
### Cycle 4, PosHel

Entries: 587	Entries: 4837	Entries: 594
Mean: 5.7739 +/- 0.0106	Mean: 11.0005 +/- 0.0046	Mean: 5.6726 +/- 0.0093
Std Dev: 0.2578 +/- 0.0075	Std Dev: 0.3182 +/- 0.0032	Std Dev: 0.2262 +/- 0.0066



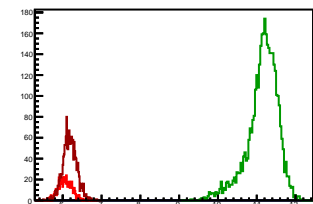
### Cycle 5, PosHel

Entries: 557	Entries: 3470	Entries: 1517
Mean: 5.6377 +/- 0.0091	Mean: 10.8876 +/- 0.0074	Mean: 6.1022 +/- 0.0045
Std Dev: 0.2197 +/- 0.0064	Std Dev: 0.4348 +/- 0.0052	Std Dev: 0.1751 +/- 0.0032



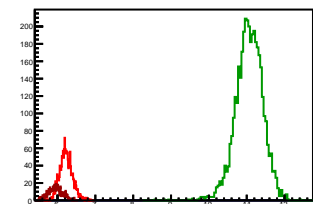
### Cycle 6, PosHel

Entries: 572	Entries: 3798	Entries: 1660
Mean: 6.0590 +/- 0.0075	Mean: 11.1472 +/- 0.0065	Mean: 6.1849 +/- 0.0044
Std Dev: 0.1792 +/- 0.0053	Std Dev: 0.4018 +/- 0.0046	Std Dev: 0.1795 +/- 0.0031



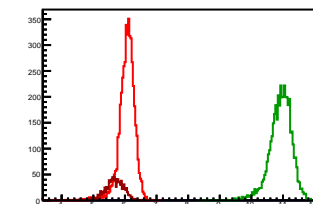
### Cycle 7, PosHel

Entries: 1623	Entries: 3864	Entries: 609
Mean: 6.2288 +/- 0.0042	Mean: 11.0616 +/- 0.0058	Mean: 5.9447 +/- 0.0075
Std Dev: 0.1706 +/- 0.0030	Std Dev: 0.3598 +/- 0.0041	Std Dev: 0.1852 +/- 0.0053



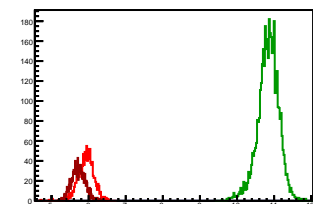
### Cycle 8, PosHel

Entries: 4649	Entries: 4341	Entries: 1056
Mean: 6.0571 +/- 0.0038	Mean: 10.9218 +/- 0.0053	Mean: 5.6612 +/- 0.0092
Std Dev: 0.2607 +/- 0.0027	Std Dev: 0.3495 +/- 0.0038	Std Dev: 0.2999 +/- 0.0065



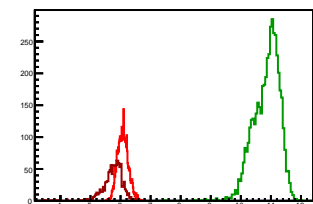
### Cycle 9, PosHel

Entries: 1051	Entries: 4120	Entries: 1098
Mean: 5.9275 +/- 0.0066	Mean: 10.8395 +/- 0.0045	Mean: 5.7285 +/- 0.0056
Std Dev: 0.2155 +/- 0.0047	Std Dev: 0.2878 +/- 0.0032	Std Dev: 0.1861 +/- 0.0040



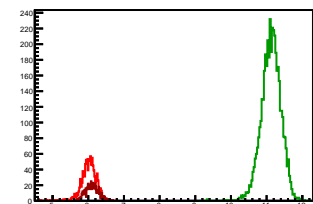
### Cycle 10, PosHel

Entries: 3306	Entries: 4771	Entries: 1054
Mean: 6.0796 +/- 0.0031	Mean: 10.8522 +/- 0.0062	Mean: 5.7493 +/- 0.0102
Std Dev: 0.1807 +/- 0.0022	Std Dev: 0.4301 +/- 0.0044	Std Dev: 0.3327 +/- 0.0072



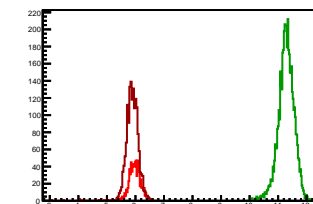
### Cycle 11, PosHel

Entries: 1043	Entries: 4373	Entries: 726
Mean: 6.0074 +/- 0.0070	Mean: 11.1246 +/- 0.0042	Mean: 6.1018 +/- 0.0067
Std Dev: 0.2257 +/- 0.0049	Std Dev: 0.2747 +/- 0.0029	Std Dev: 0.1814 +/- 0.0048



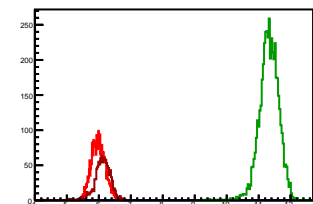
### Cycle 12, PosHel

Entries: 747	Entries: 4743	Entries: 1580
Mean: 5.9797 +/- 0.0079	Mean: 11.2809 +/- 0.0040	Mean: 5.8869 +/- 0.0057
Std Dev: 0.2166 +/- 0.0056	Std Dev: 0.2780 +/- 0.0029	Std Dev: 0.2284 +/- 0.0041



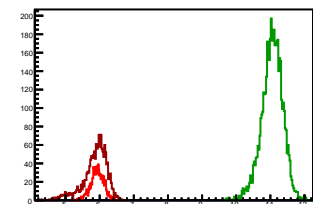
### Cycle 13, PosHel

Entries: 3125	Entries: 4734	Entries: 1098
Mean: 5.9677 +/- 0.0039	Mean: 11.3252 +/- 0.0044	Mean: 6.1181 +/- 0.0075
Std Dev: 0.2174 +/- 0.0027	Std Dev: 0.3025 +/- 0.0031	Std Dev: 0.2473 +/- 0.0053



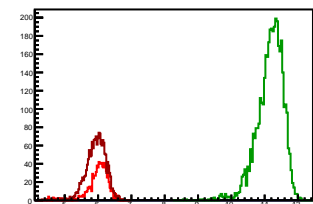
### Cycle 14, PosHel

Entries: 1075	Entries: 4801	Entries: 1581
Mean: 5.9283 +/- 0.0058	Mean: 11.0511 +/- 0.0045	Mean: 5.8610 +/- 0.0089
Std Dev: 0.1908 +/- 0.0041	Std Dev: 0.3119 +/- 0.0032	Std Dev: 0.3537 +/- 0.0063



### Cycle 15, PosHel

Entries: 875	Entries: 3994	Entries: 1676
Mean: 5.9941 +/- 0.0117	Mean: 11.1627 +/- 0.0062	Mean: 5.9476 +/- 0.0070
Std Dev: 0.3472 +/- 0.0083	Std Dev: 0.3920 +/- 0.0044	Std Dev: 0.2858 +/- 0.0049



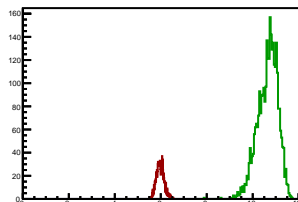
## Cycle 1, NegHel

Entries: 0	Entries: 916	Entries: 0
Mean: 0.0000 +/- 0.0000	Mean: 10.9521 +/- 0.0095	Mean: 0.0000 +/- 0.0000
Std Dev: 0.0000 +/- 0.0000	Std Dev: 0.2888 +/- 0.0067	Std Dev: 0.0000 +/- 0.0000



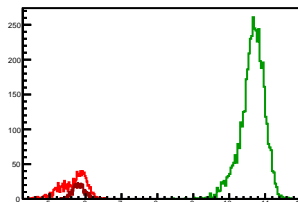
## Cycle 2, NegHel

Entries: 0	Entries: 3095	Entries: 1106
Mean: 0.0000 +/- 0.0000	Mean: 10.6512 +/- 0.0079	Mean: 5.9765 +/- 0.0050
Std Dev: 0.0000 +/- 0.0000	Std Dev: 0.4381 +/- 0.0056	Std Dev: 0.1659 +/- 0.0035



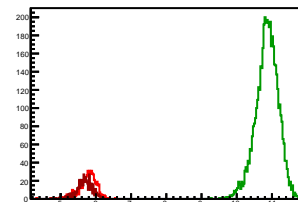
## Cycle 3, NegHel

Entries: 1081	Entries: 4728	Entries: 598
Mean: 5.6650 +/- 0.0108	Mean: 10.6444 +/- 0.0050	Mean: 5.8100 +/- 0.0072
Std Dev: 0.3553 +/- 0.0076	Std Dev: 0.3424 +/- 0.0035	Std Dev: 0.1757 +/- 0.0051



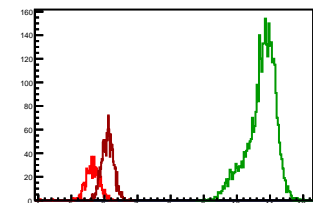
## Cycle 4, NegHel

Entries: 587	Entries: 4837	Entries: 594
Mean: 5.7753 +/- 0.0103	Mean: 10.8587 +/- 0.0046	Mean: 5.6776 +/- 0.0093
Std Dev: 0.2506 +/- 0.0073	Std Dev: 0.3212 +/- 0.0033	Std Dev: 0.2277 +/- 0.0066



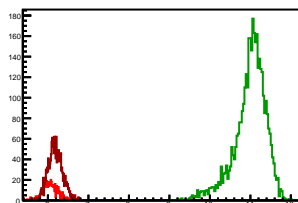
## Cycle 5, NegHel

Entries: 557	Entries: 3470	Entries: 1517
Mean: 5.6402 +/- 0.0090	Mean: 10.7388 +/- 0.0074	Mean: 6.1004 +/- 0.0046
Std Dev: 0.2178 +/- 0.0064	Std Dev: 0.4334 +/- 0.0052	Std Dev: 0.1783 +/- 0.0032



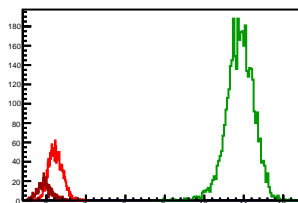
## Cycle 6, NegHel

Entries: 572	Entries: 3798	Entries: 1660
Mean: 6.0564 +/- 0.0075	Mean: 10.9907 +/- 0.0064	Mean: 6.1831 +/- 0.0044
Std Dev: 0.1803 +/- 0.0053	Std Dev: 0.3950 +/- 0.0045	Std Dev: 0.1790 +/- 0.0031



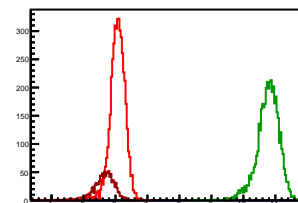
## Cycle 7, NegHel

Entries: 1623	Entries: 3864	Entries: 609
Mean: 6.2333 +/- 0.0043	Mean: 10.9069 +/- 0.0056	Mean: 5.9537 +/- 0.0072
Std Dev: 0.1731 +/- 0.0030	Std Dev: 0.3465 +/- 0.0039	Std Dev: 0.1774 +/- 0.0051



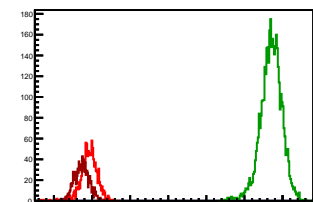
## Cycle 8, NegHel

Entries: 4649	Entries: 4341	Entries: 1056
Mean: 6.0569 +/- 0.0038	Mean: 10.7703 +/- 0.0052	Mean: 5.6589 +/- 0.0093
Std Dev: 0.2591 +/- 0.0027	Std Dev: 0.3445 +/- 0.0037	Std Dev: 0.3009 +/- 0.0065



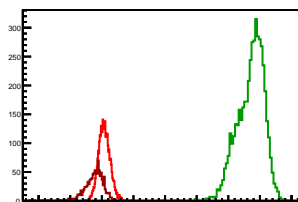
## Cycle 9, NegHel

Entries: 1051	Entries: 4120	Entries: 1098
Mean: 5.9274 +/- 0.0066	Mean: 10.7009 +/- 0.0044	Mean: 5.7284 +/- 0.0058
Std Dev: 0.2133 +/- 0.0047	Std Dev: 0.2810 +/- 0.0031	Std Dev: 0.1919 +/- 0.0041



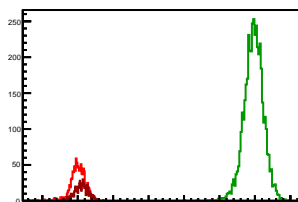
## Cycle 10, NegHel

Entries: 3306	Entries: 4771	Entries: 1054
Mean: 6.0766 +/- 0.0032	Mean: 10.7055 +/- 0.0062	Mean: 5.7504 +/- 0.0097
Std Dev: 0.1835 +/- 0.0023	Std Dev: 0.4258 +/- 0.0044	Std Dev: 0.3136 +/- 0.0068



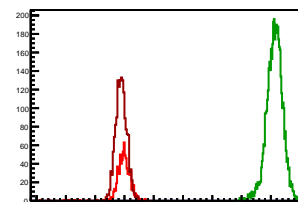
## Cycle 11, NegHel

Entries: 1043	Entries: 4373	Entries: 726
Mean: 6.0050 +/- 0.0069	Mean: 10.9646 +/- 0.0041	Mean: 6.1169 +/- 0.0068
Std Dev: 0.2235 +/- 0.0049	Std Dev: 0.2720 +/- 0.0029	Std Dev: 0.1833 +/- 0.0048



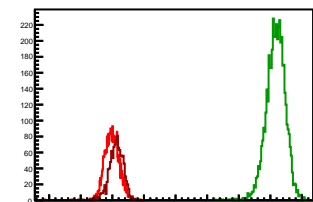
## Cycle 12, NegHel

Entries: 747	Entries: 4743	Entries: 1580
Mean: 5.9798 +/- 0.0084	Mean: 11.1270 +/- 0.0040	Mean: 5.8806 +/- 0.0057
Std Dev: 0.2302 +/- 0.0060	Std Dev: 0.2742 +/- 0.0028	Std Dev: 0.2257 +/- 0.0040



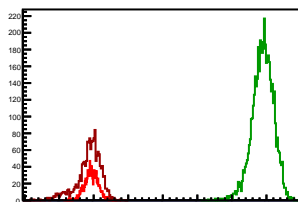
## Cycle 13, NegHel

Entries: 3125	Entries: 4734	Entries: 1098
Mean: 5.9894 +/- 0.0039	Mean: 11.1676 +/- 0.0044	Mean: 6.1182 +/- 0.0073
Std Dev: 0.2204 +/- 0.0028	Std Dev: 0.3017 +/- 0.0031	Std Dev: 0.2426 +/- 0.0052



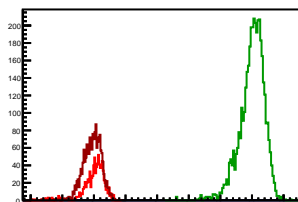
## Cycle 14, NegHel

Entries: 1075	Entries: 4801	Entries: 1581
Mean: 5.9326 +/- 0.0060	Mean: 10.8968 +/- 0.0044	Mean: 5.8612 +/- 0.0089
Std Dev: 0.1969 +/- 0.0042	Std Dev: 0.3065 +/- 0.0031	Std Dev: 0.3532 +/- 0.0063



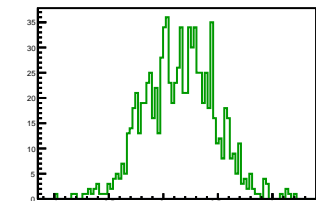
## Cycle 15, NegHel

Entries: 875	Entries: 3994	Entries: 1676
Mean: 6.0045 +/- 0.0123	Mean: 11.0038 +/- 0.0062	Mean: 5.9467 +/- 0.0071
Std Dev: 0.3633 +/- 0.0087	Std Dev: 0.3911 +/- 0.0044	Std Dev: 0.2902 +/- 0.0050



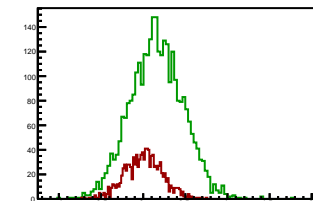
### Cycle 1, Diffs

Entries: 0	Entries: 916	Entries: 0
Mean: 0.0000 +/- 0.0000	Mean: 0.1502 +/- 0.0106	Mean: 0.0000 +/- 0.0000
Std Dev: 0.0000 +/- 0.0000	Std Dev: 0.3209 +/- 0.0075	Std Dev: 0.0000 +/- 0.0000



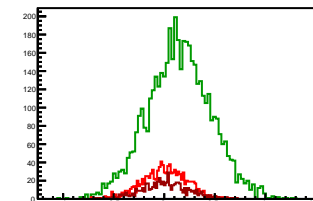
### Cycle 2, Diffs

Entries: 0	Entries: 3095	Entries: 1106
Mean: 0.0000 +/- 0.0000	Mean: 0.1595 +/- 0.0056	Mean: 0.0053 +/- 0.0066
Std Dev: 0.0000 +/- 0.0000	Std Dev: 0.3128 +/- 0.0040	Std Dev: 0.2210 +/- 0.0047



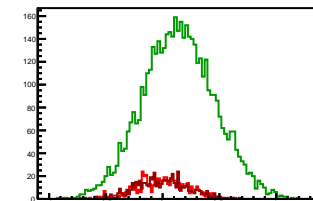
### Cycle 3, Diffs

Entries: 1081	Entries: 4728	Entries: 598
Mean: 0.0055 +/- 0.0068	Mean: 0.1461 +/- 0.0046	Mean: 0.0079 +/- 0.0094
Std Dev: 0.2227 +/- 0.0048	Std Dev: 0.3153 +/- 0.0032	Std Dev: 0.2306 +/- 0.0067



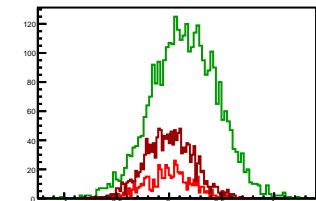
### Cycle 4, Diffs

Entries: 587	Entries: 4837	Entries: 594
Mean: -0.0013 +/- 0.0093	Mean: 0.1418 +/- 0.0045	Mean: -0.0050 +/- 0.0093
Std Dev: 0.2245 +/- 0.0066	Std Dev: 0.3147 +/- 0.0032	Std Dev: 0.2259 +/- 0.0066



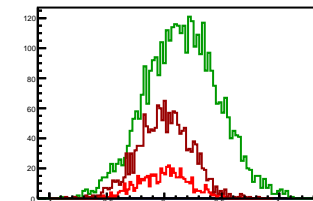
### Cycle 5, Diffs

Entries: 557	Entries: 3470	Entries: 1517
Mean: -0.0025 +/- 0.0093	Mean: 0.1488 +/- 0.0053	Mean: 0.0017 +/- 0.0059
Std Dev: 0.2247 +/- 0.0066	Std Dev: 0.3118 +/- 0.0037	Std Dev: 0.2284 +/- 0.0041



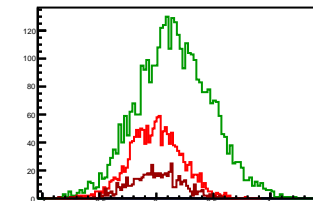
### Cycle 6, Diffs

Entries: 572	Entries: 3798	Entries: 1660
Mean: 0.0026 +/- 0.0093	Mean: 0.1565 +/- 0.0051	Mean: 0.0018 +/- 0.0056
Std Dev: 0.2220 +/- 0.0066	Std Dev: 0.3153 +/- 0.0036	Std Dev: 0.2299 +/- 0.0040



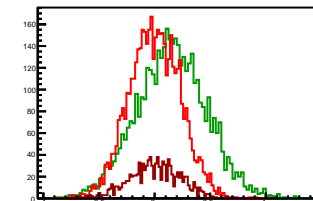
### Cycle 7, Diffs

Entries: 1623	Entries: 3864	Entries: 609
Mean: -0.0045 +/- 0.0056	Mean: 0.1548 +/- 0.0052	Mean: -0.0090 +/- 0.0092
Std Dev: 0.2258 +/- 0.0040	Std Dev: 0.3214 +/- 0.0037	Std Dev: 0.2269 +/- 0.0065



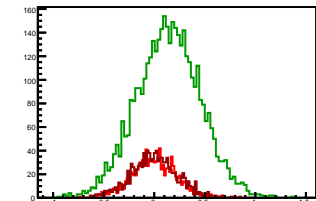
### Cycle 8, Diffs

Entries: 4649	Entries: 4341	Entries: 1056
Mean: 0.0003 +/- 0.0033	Mean: 0.1514 +/- 0.0047	Mean: 0.0023 +/- 0.0069
Std Dev: 0.2283 +/- 0.0024	Std Dev: 0.3127 +/- 0.0034	Std Dev: 0.2243 +/- 0.0049



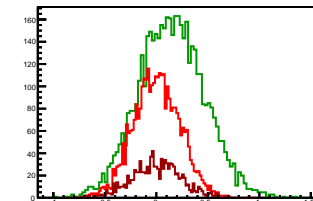
### Cycle 9, Diffs

Entries: 1051	Entries: 4120	Entries: 1098
Mean: 0.0001 +/- 0.0067	Mean: 0.1386 +/- 0.0049	Mean: 0.0001 +/- 0.0069
Std Dev: 0.2186 +/- 0.0048	Std Dev: 0.3172 +/- 0.0035	Std Dev: 0.2273 +/- 0.0049



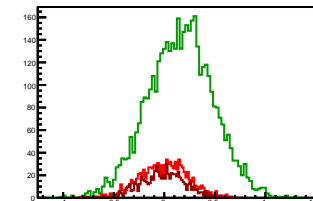
### Cycle 10, Diffs

Entries: 3306	Entries: 4771	Entries: 1054
Mean: 0.0031 +/- 0.0039	Mean: 0.1467 +/- 0.0046	Mean: -0.0012 +/- 0.0073
Std Dev: 0.2252 +/- 0.0028	Std Dev: 0.3179 +/- 0.0033	Std Dev: 0.2376 +/- 0.0052



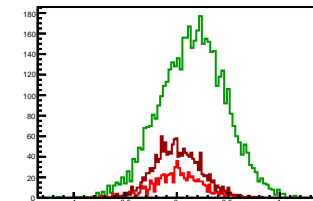
### Cycle 11, Diffs

Entries: 1043	Entries: 4373	Entries: 726
Mean: 0.0024 +/- 0.0072	Mean: 0.1600 +/- 0.0049	Mean: -0.0151 +/- 0.0081
Std Dev: 0.2327 +/- 0.0051	Std Dev: 0.3217 +/- 0.0034	Std Dev: 0.2194 +/- 0.0058



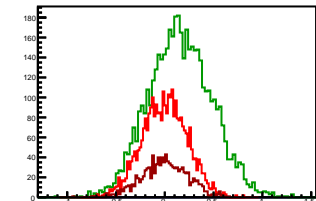
### Cycle 12, Diffs

Entries: 747	Entries: 4743	Entries: 1580
Mean: -0.0001 +/- 0.0086	Mean: 0.1539 +/- 0.0046	Mean: 0.0063 +/- 0.0057
Std Dev: 0.2360 +/- 0.0061	Std Dev: 0.3172 +/- 0.0033	Std Dev: 0.2267 +/- 0.0040



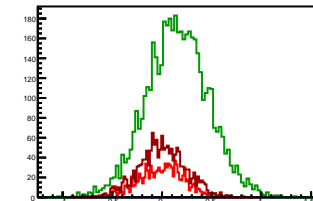
### Cycle 13, Diffs

Entries: 3125	Entries: 4734	Entries: 1098
Mean: -0.0017 +/- 0.0041	Mean: 0.1576 +/- 0.0047	Mean: -0.0001 +/- 0.0071
Std Dev: 0.2288 +/- 0.0029	Std Dev: 0.3217 +/- 0.0033	Std Dev: 0.2339 +/- 0.0050



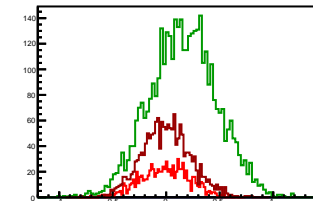
### Cycle 14, Diffs

Entries: 1075	Entries: 4801	Entries: 1581
Mean: -0.0043 +/- 0.0071	Mean: 0.1543 +/- 0.0045	Mean: -0.0002 +/- 0.0059
Std Dev: 0.2330 +/- 0.0050	Std Dev: 0.3125 +/- 0.0032	Std Dev: 0.2335 +/- 0.0042



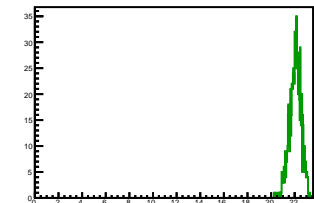
### Cycle 15, Diffs

Entries: 675	Entries: 3994	Entries: 1676
Mean: -0.0103 +/- 0.0075	Mean: 0.1589 +/- 0.0049	Mean: 0.0009 +/- 0.0055
Std Dev: 0.2229 +/- 0.0053	Std Dev: 0.3112 +/- 0.0035	Std Dev: 0.2271 +/- 0.0039



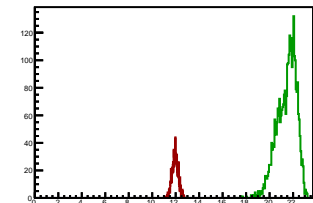
## Cycle 1, Sums

Entries: 0	Entries: 916	Entries: 0
Mean: 0.0000 +/- 0.0000	Mean: 22.0544 +/- 0.0160	Mean: 0.0000 +/- 0.0000
Std Dev: 0.0000 +/- 0.0000	Std Dev: 0.4841 +/- 0.0113	Std Dev: 0.0000 +/- 0.0000



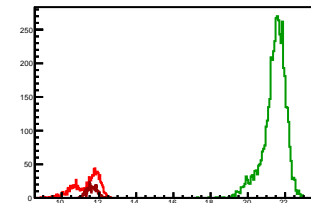
## Cycle 2, Sums

Entries: 0	Entries: 3095	Entries: 1106
Mean: 0.0000 +/- 0.0000	Mean: 21.4618 +/- 0.0148	Mean: 11.9584 +/- 0.0078
Std Dev: 0.0000 +/- 0.0000	Std Dev: 0.8238 +/- 0.0105	Std Dev: 0.2579 +/- 0.0055



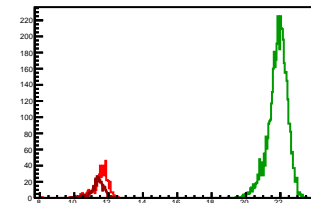
## Cycle 3, Sums

Entries: 1081	Entries: 4728	Entries: 598
Mean: 11.3356 +/- 0.0209	Mean: 21.4350 +/- 0.0090	Mean: 11.6279 +/- 0.0111
Std Dev: 0.6862 +/- 0.0148	Std Dev: 0.6213 +/- 0.0064	Std Dev: 0.2706 +/- 0.0078



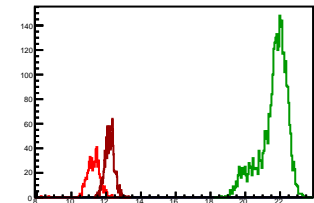
## Cycle 4, Sums

Entries: 587	Entries: 4837	Entries: 594
Mean: 11.5492 +/- 0.0188	Mean: 21.8591 +/- 0.0080	Mean: 11.3502 +/- 0.0162
Std Dev: 0.4562 +/- 0.0133	Std Dev: 0.5565 +/- 0.0057	Std Dev: 0.3938 +/- 0.0114



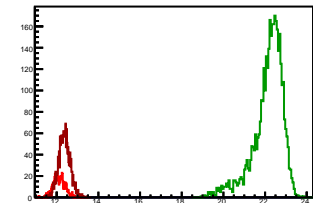
## Cycle 5, Sums

Entries: 557	Entries: 3470	Entries: 1517
Mean: 11.2779 +/- 0.0155	Mean: 21.6263 +/- 0.0138	Mean: 12.2028 +/- 0.0069
Std Dev: 0.3755 +/- 0.0110	Std Dev: 0.8103 +/- 0.0097	Std Dev: 0.2697 +/- 0.0049



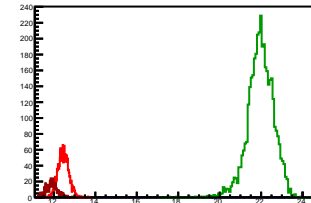
## Cycle 6, Sums

Entries: 572	Entries: 3798	Entries: 1660
Mean: 12.1155 +/- 0.0118	Mean: 22.1379 +/- 0.0119	Mean: 12.3680 +/- 0.0068
Std Dev: 0.2828 +/- 0.0084	Std Dev: 0.7317 +/- 0.0084	Std Dev: 0.2752 +/- 0.0048



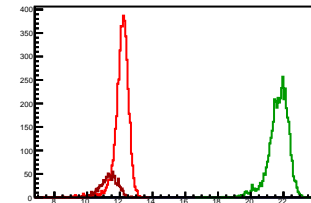
## Cycle 7, Sums

Entries: 1623	Entries: 3864	Entries: 609
Mean: 12.4621 +/- 0.0064	Mean: 21.9685 +/- 0.0101	Mean: 11.8984 +/- 0.0115
Std Dev: 0.2590 +/- 0.0045	Std Dev: 0.6277 +/- 0.0071	Std Dev: 0.2828 +/- 0.0081



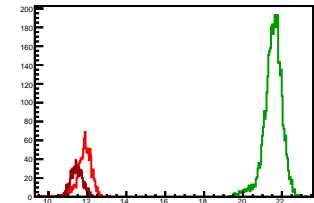
## Cycle 8, Sums

Entries: 4649	Entries: 4341	Entries: 1056
Mean: 12.1140 +/- 0.0068	Mean: 21.6921 +/- 0.0094	Mean: 11.3202 +/- 0.0172
Std Dev: 0.4669 +/- 0.0048	Std Dev: 0.6196 +/- 0.0066	Std Dev: 0.5574 +/- 0.0121



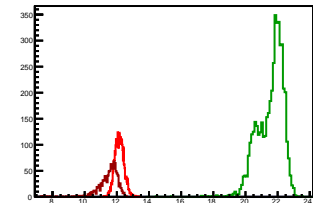
## Cycle 9, Sums

Entries: 1051	Entries: 4120	Entries: 1098
Mean: 11.8550 +/- 0.0114	Mean: 21.5404 +/- 0.0074	Mean: 11.4569 +/- 0.0091
Std Dev: 0.3688 +/- 0.0080	Std Dev: 0.4721 +/- 0.0052	Std Dev: 0.3020 +/- 0.0064



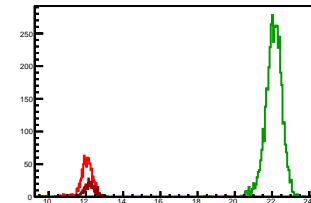
## Cycle 10, Sums

Entries: 3306	Entries: 4771	Entries: 1054
Mean: 12.1562 +/- 0.0050	Mean: 21.5578 +/- 0.0115	Mean: 11.4997 +/- 0.0185
Std Dev: 0.2862 +/- 0.0035	Std Dev: 0.7946 +/- 0.0081	Std Dev: 0.6014 +/- 0.0131



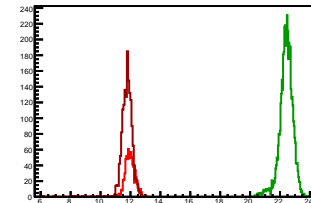
## Cycle 11, Sums

Entries: 1043	Entries: 4373	Entries: 726
Mean: 12.0124 +/- 0.0119	Mean: 22.0893 +/- 0.0067	Mean: 12.2187 +/- 0.0108
Std Dev: 0.3843 +/- 0.0084	Std Dev: 0.4421 +/- 0.0047	Std Dev: 0.2914 +/- 0.0076



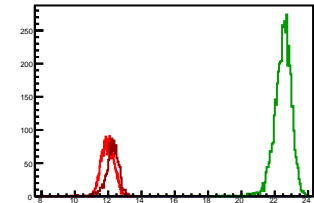
## Cycle 12, Sums

Entries: 747	Entries: 4743	Entries: 1580
Mean: 11.9596 +/- 0.0139	Mean: 22.4079 +/- 0.0066	Mean: 11.7676 +/- 0.0099
Std Dev: 0.3796 +/- 0.0098	Std Dev: 0.4520 +/- 0.0046	Std Dev: 0.3935 +/- 0.0070



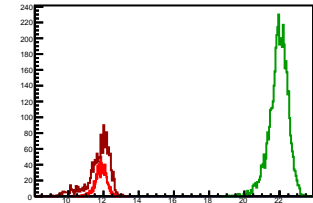
## Cycle 13, Sums

Entries: 3125	Entries: 4734	Entries: 1098
Mean: 11.9771 +/- 0.0067	Mean: 22.4928 +/- 0.0074	Mean: 12.2362 +/- 0.0130
Std Dev: 0.3733 +/- 0.0047	Std Dev: 0.5114 +/- 0.0053	Std Dev: 0.4305 +/- 0.0092



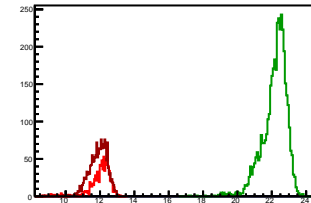
## Cycle 14, Sums

Entries: 1075	Entries: 4801	Entries: 1581
Mean: 11.8609 +/- 0.0095	Mean: 21.9479 +/- 0.0077	Mean: 11.7222 +/- 0.0168
Std Dev: 0.3099 +/- 0.0067	Std Dev: 0.5336 +/- 0.0054	Std Dev: 0.6673 +/- 0.0119



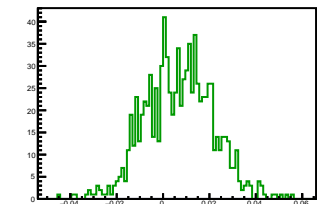
## Cycle 15, Sums

Entries: 875	Entries: 3994	Entries: 1676
Mean: 11.9986 +/- 0.0228	Mean: 22.1665 +/- 0.0114	Mean: 11.8942 +/- 0.0129
Std Dev: 0.6748 +/- 0.0161	Std Dev: 0.7187 +/- 0.0080	Std Dev: 0.5294 +/- 0.0091



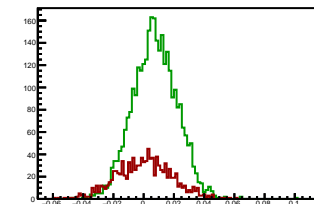
### Cycle 1, Asyms

Entries: 0	Entries: 916	Entries: 0
Mean: 0.0000 +/- 0.0000	Mean: 0.0068 +/- 0.0005	Mean: 0.0000 +/- 0.0000
Std Dev: 0.0000 +/- 0.0000	Std Dev: 0.0145 +/- 0.0003	Std Dev: 0.0000 +/- 0.0000



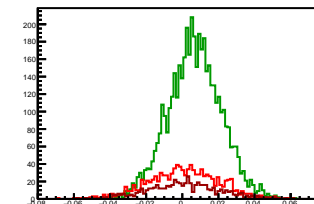
### Cycle 2, Asyms

Entries: 0	Entries: 3095	Entries: 1106
Mean: 0.0000 +/- 0.0000	Mean: 0.0074 +/- 0.0003	Mean: 0.0004 +/- 0.0006
Std Dev: 0.0000 +/- 0.0000	Std Dev: 0.0146 +/- 0.0002	Std Dev: 0.0184 +/- 0.0004



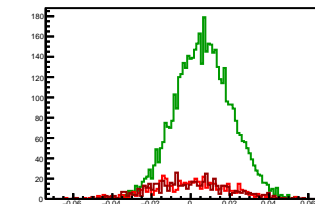
### Cycle 3, Asyms

Entries: 1081	Entries: 4728	Entries: 598
Mean: 0.0004 +/- 0.0006	Mean: 0.0068 +/- 0.0002	Mean: 0.0007 +/- 0.0008
Std Dev: 0.0196 +/- 0.0004	Std Dev: 0.0147 +/- 0.0002	Std Dev: 0.0198 +/- 0.0006



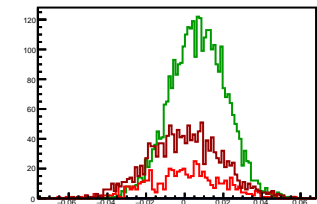
### Cycle 4, Asyms

Entries: 587	Entries: 4837	Entries: 594
Mean: -0.0002 +/- 0.0008	Mean: 0.0065 +/- 0.0002	Mean: -0.0004 +/- 0.0008
Std Dev: 0.0195 +/- 0.0006	Std Dev: 0.0144 +/- 0.0001	Std Dev: 0.0199 +/- 0.0006



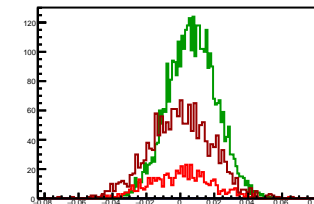
### Cycle 5, Asyms

Entries: 537	Entries: 3470	Entries: 1517
Mean: -0.0002 +/- 0.0008	Mean: 0.0069 +/- 0.0002	Mean: 0.0002 +/- 0.0005
Std Dev: 0.0199 +/- 0.0006	Std Dev: 0.0144 +/- 0.0002	Std Dev: 0.0187 +/- 0.0003



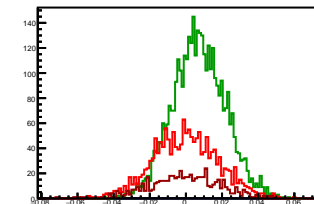
### Cycle 6, Asyms

Entries: 572	Entries: 3798	Entries: 1660
Mean: 0.0002 +/- 0.0008	Mean: 0.0071 +/- 0.0002	Mean: 0.0001 +/- 0.0005
Std Dev: 0.0183 +/- 0.0005	Std Dev: 0.0142 +/- 0.0002	Std Dev: 0.0185 +/- 0.0003



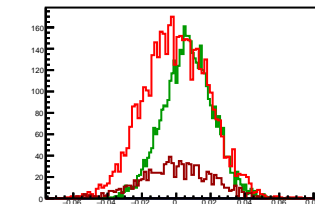
### Cycle 7, Asyms

Entries: 1623	Entries: 3864	Entries: 609
Mean: -0.0004 +/- 0.0004	Mean: 0.0070 +/- 0.0002	Mean: -0.0008 +/- 0.0008
Std Dev: 0.0181 +/- 0.0003	Std Dev: 0.0147 +/- 0.0002	Std Dev: 0.0190 +/- 0.0005



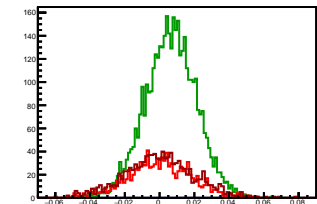
### Cycle 8, Asyms

Entries: 4649	Entries: 4341	Entries: 1056
Mean: 0.0000 +/- 0.0003	Mean: 0.0070 +/- 0.0002	Mean: 0.0002 +/- 0.0006
Std Dev: 0.0188 +/- 0.0002	Std Dev: 0.0144 +/- 0.0002	Std Dev: 0.0199 +/- 0.0004



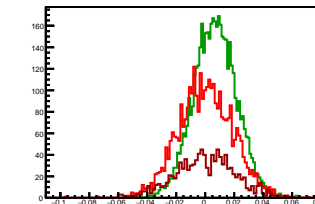
### Cycle 9, Asyms

Entries: 1051	Entries: 4120	Entries: 1098
Mean: 0.0000 +/- 0.0006	Mean: 0.0064 +/- 0.0002	Mean: 0.0000 +/- 0.0006
Std Dev: 0.0184 +/- 0.0004	Std Dev: 0.0147 +/- 0.0002	Std Dev: 0.0198 +/- 0.0004



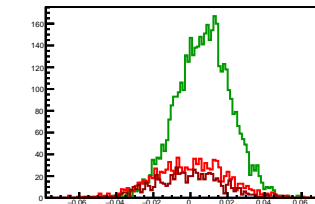
### Cycle 10, Asyms

Entries: 3306	Entries: 4771	Entries: 1054
Mean: 0.0003 +/- 0.0003	Mean: 0.0068 +/- 0.0002	Mean: -0.0002 +/- 0.0006
Std Dev: 0.0185 +/- 0.0002	Std Dev: 0.0148 +/- 0.0002	Std Dev: 0.0208 +/- 0.0005



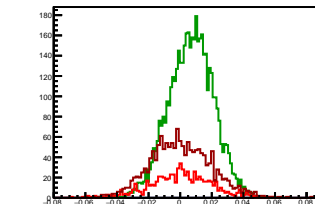
### Cycle 11, Asyms

Entries: 1043	Entries: 4373	Entries: 726
Mean: 0.0002 +/- 0.0006	Mean: 0.0072 +/- 0.0002	Mean: -0.0012 +/- 0.0007
Std Dev: 0.0194 +/- 0.0004	Std Dev: 0.0146 +/- 0.0002	Std Dev: 0.0179 +/- 0.0005



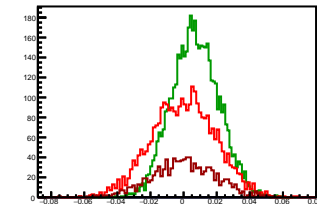
### Cycle 12, Asyms

Entries: 747	Entries: 4743	Entries: 1580
Mean: 0.0000 +/- 0.0007	Mean: 0.0069 +/- 0.0002	Mean: 0.0005 +/- 0.0005
Std Dev: 0.0198 +/- 0.0005	Std Dev: 0.0141 +/- 0.0001	Std Dev: 0.0193 +/- 0.0003



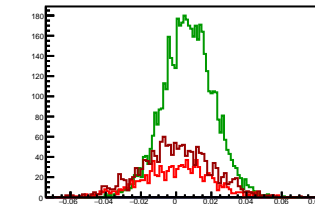
### Cycle 13, Asyms

Entries: 3125	Entries: 4734	Entries: 1098
Mean: -0.0001 +/- 0.0003	Mean: 0.0070 +/- 0.0002	Mean: -0.0000 +/- 0.0006
Std Dev: 0.0191 +/- 0.0002	Std Dev: 0.0143 +/- 0.0001	Std Dev: 0.0191 +/- 0.0004



### Cycle 14, Asyms

Entries: 1075	Entries: 4801	Entries: 1581
Mean: -0.0003 +/- 0.0006	Mean: 0.0070 +/- 0.0002	Mean: -0.0000 +/- 0.0005
Std Dev: 0.0196 +/- 0.0004	Std Dev: 0.0142 +/- 0.0001	Std Dev: 0.0199 +/- 0.0004



### Cycle 15, Asyms

Entries: 875	Entries: 3994	Entries: 1676
Mean: -0.0008 +/- 0.0006	Mean: 0.0072 +/- 0.0002	Mean: 0.0001 +/- 0.0005
Std Dev: 0.0187 +/- 0.0004	Std Dev: 0.0141 +/- 0.0002	Std Dev: 0.0191 +/- 0.0003

