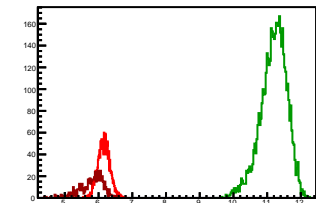


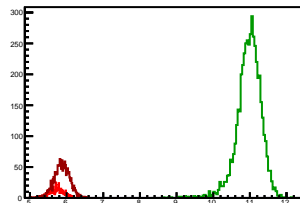
Cycle 1, PosHel

Entries: 1592	Entries: 4821	Entries: 573
Mean: 6.1579 +/- 0.0045	Mean: 11.1901 +/- 0.0056	Mean: 5.7949 +/- 0.0153
Std Dev: 0.1787 +/- 0.0032	Std Dev: 0.3911 +/- 0.0040	Std Dev: 0.3666 +/- 0.0108



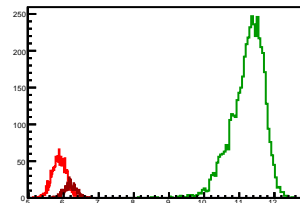
Cycle 2, PosHel

Entries: 574	Entries: 4763	Entries: 1510
Mean: 5.7359 +/- 0.0076	Mean: 10.9724 +/- 0.0049	Mean: 5.8708 +/- 0.0055
Std Dev: 0.1821 +/- 0.0054	Std Dev: 0.3375 +/- 0.0035	Std Dev: 0.2130 +/- 0.0039



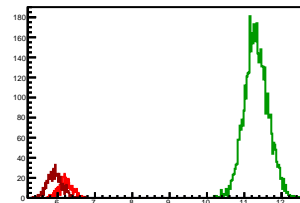
Cycle 3, PosHel

Entries: 1519	Entries: 4742	Entries: 608
Mean: 5.8742 +/- 0.0051	Mean: 11.2342 +/- 0.0069	Mean: 6.1932 +/- 0.0070
Std Dev: 0.2005 +/- 0.0036	Std Dev: 0.4720 +/- 0.0048	Std Dev: 0.1736 +/- 0.0050



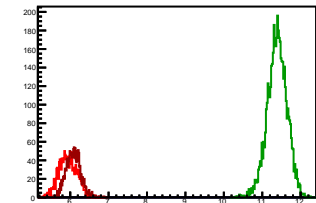
Cycle 4, PosHel

Entries: 604	Entries: 4748	Entries: 716
Mean: 6.2133 +/- 0.0073	Mean: 11.3224 +/- 0.0046	Mean: 5.9228 +/- 0.0073
Std Dev: 0.1799 +/- 0.0052	Std Dev: 0.3168 +/- 0.0033	Std Dev: 0.1948 +/- 0.0051



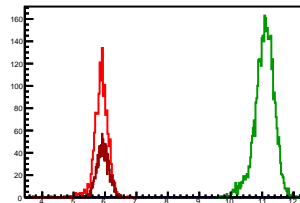
Cycle 5, PosHel

Entries: 1536	Entries: 4803	Entries: 1495
Mean: 5.9332 +/- 0.0060	Mean: 11.3868 +/- 0.0037	Mean: 6.0861 +/- 0.0048
Std Dev: 0.2343 +/- 0.0042	Std Dev: 0.2564 +/- 0.0028	Std Dev: 0.1850 +/- 0.0034



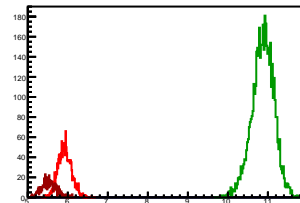
Cycle 6, PosHel

Entries: 1510	Entries: 3936	Entries: 1498
Mean: 5.8729 +/- 0.0061	Mean: 11.0743 +/- 0.0050	Mean: 5.9350 +/- 0.0049
Std Dev: 0.2367 +/- 0.0043	Std Dev: 0.3125 +/- 0.0035	Std Dev: 0.1888 +/- 0.0034



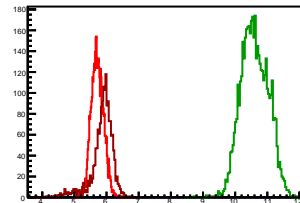
Cycle 7, PosHel

Entries: 1513	Entries: 4764	Entries: 591
Mean: 5.9245 +/- 0.0043	Mean: 10.8723 +/- 0.0040	Mean: 5.5292 +/- 0.0076
Std Dev: 0.1691 +/- 0.0031	Std Dev: 0.2763 +/- 0.0028	Std Dev: 0.1853 +/- 0.0054



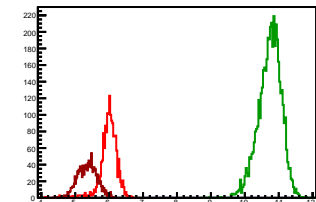
Cycle 8, PosHel

Entries: 3966	Entries: 4744	Entries: 1690
Mean: 5.7169 +/- 0.0030	Mean: 10.6033 +/- 0.0061	Mean: 5.8648 +/- 0.0085
Std Dev: 0.1913 +/- 0.0021	Std Dev: 0.4181 +/- 0.0043	Std Dev: 0.3478 +/- 0.0060



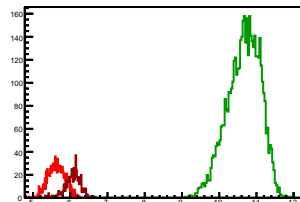
Cycle 9, PosHel

Entries: 1655	Entries: 4756	Entries: 1512
Mean: 5.9923 +/- 0.0064	Mean: 10.7355 +/- 0.0049	Mean: 5.3590 +/- 0.0071
Std Dev: 0.2589 +/- 0.0045	Std Dev: 0.3353 +/- 0.0034	Std Dev: 0.2749 +/- 0.0050



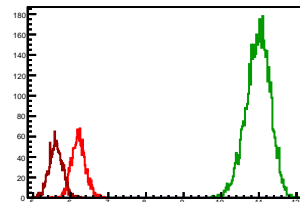
Cycle 10, PosHel

Entries: 1068	Entries: 4798	Entries: 578
Mean: 5.6325 +/- 0.0070	Mean: 10.6576 +/- 0.0064	Mean: 6.0654 +/- 0.0087
Std Dev: 0.2302 +/- 0.0050	Std Dev: 0.4405 +/- 0.0045	Std Dev: 0.2095 +/- 0.0062



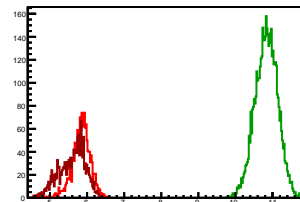
Cycle 11, PosHel

Entries: 1642	Entries: 4802	Entries: 1533
Mean: 6.2074 +/- 0.0046	Mean: 10.9733 +/- 0.0046	Mean: 5.6057 +/- 0.0046
Std Dev: 0.1855 +/- 0.0032	Std Dev: 0.3220 +/- 0.0033	Std Dev: 0.1801 +/- 0.0033



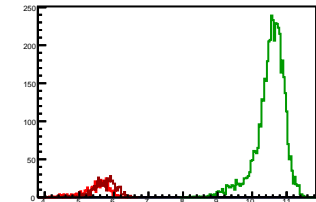
Cycle 12, PosHel

Entries: 1549	Entries: 4811	Entries: 1641
Mean: 5.8428 +/- 0.0063	Mean: 10.8320 +/- 0.0043	Mean: 5.5959 +/- 0.0087
Std Dev: 0.2463 +/- 0.0044	Std Dev: 0.3010 +/- 0.0031	Std Dev: 0.3507 +/- 0.0061



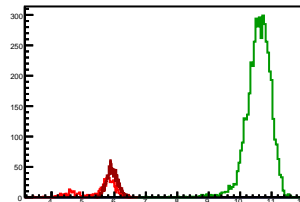
Cycle 13, PosHel

Entries: 575	Entries: 4743	Entries: 592
Mean: 5.4931 +/- 0.0157	Mean: 10.5237 +/- 0.0062	Mean: 5.7180 +/- 0.0144
Std Dev: 0.3771 +/- 0.0111	Std Dev: 0.4258 +/- 0.0044	Std Dev: 0.3495 +/- 0.0102



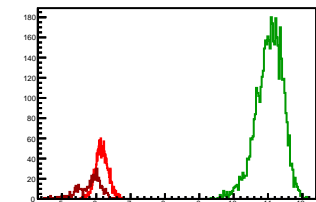
Cycle 14, PosHel

Entries: 589	Entries: 4781	Entries: 1631
Mean: 5.5398 +/- 0.0232	Mean: 10.5860 +/- 0.0056	Mean: 5.9344 +/- 0.0044
Std Dev: 0.5628 +/- 0.0164	Std Dev: 0.3859 +/- 0.0039	Std Dev: 0.1795 +/- 0.0031



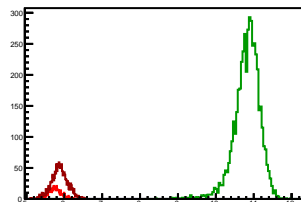
Cycle 1, NegHel

Entries: 1592	Entries: 4821	Entries: 573
Mean: 6.1636 +/- 0.0046	Mean: 11.0401 +/- 0.0056	Mean: 5.7987 +/- 0.0150
Std Dev: 0.1849 +/- 0.0033	Std Dev: 0.3905 +/- 0.0040	Std Dev: 0.3587 +/- 0.0106



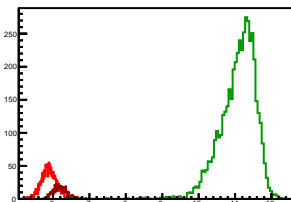
Cycle 2, NegHel

Entries: 574	Entries: 4763	Entries: 1510
Mean: 5.7349 +/- 0.0072	Mean: 10.8212 +/- 0.0049	Mean: 5.8751 +/- 0.0055
Std Dev: 0.1734 +/- 0.0051	Std Dev: 0.3406 +/- 0.0035	Std Dev: 0.2154 +/- 0.0039



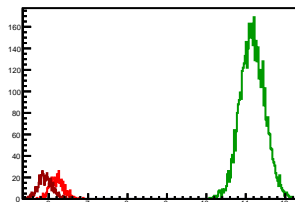
Cycle 3, NegHel

Entries: 1519	Entries: 4742	Entries: 608
Mean: 5.8776 +/- 0.0052	Mean: 11.0792 +/- 0.0069	Mean: 6.1928 +/- 0.0074
Std Dev: 0.2035 +/- 0.0037	Std Dev: 0.4782 +/- 0.0049	Std Dev: 0.1826 +/- 0.0052



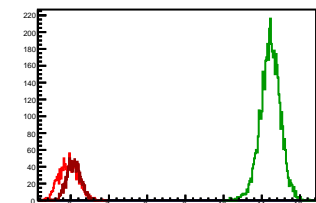
Cycle 4, NegHel

Entries: 604	Entries: 4748	Entries: 716
Mean: 6.2110 +/- 0.0072	Mean: 11.1724 +/- 0.0045	Mean: 5.9127 +/- 0.0067
Std Dev: 0.1768 +/- 0.0051	Std Dev: 0.3114 +/- 0.0032	Std Dev: 0.1800 +/- 0.0048



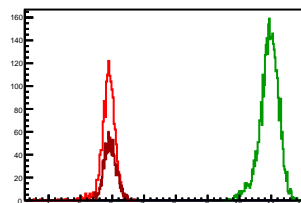
Cycle 5, NegHel

Entries: 1536	Entries: 4803	Entries: 1495
Mean: 5.9450 +/- 0.0062	Mean: 11.2239 +/- 0.0038	Mean: 6.0795 +/- 0.0047
Std Dev: 0.2432 +/- 0.0044	Std Dev: 0.2625 +/- 0.0027	Std Dev: 0.1827 +/- 0.0033



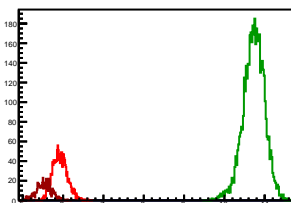
Cycle 6, NegHel

Entries: 1510	Entries: 3936	Entries: 1498
Mean: 5.8742 +/- 0.0060	Mean: 10.9311 +/- 0.0048	Mean: 5.9370 +/- 0.0051
Std Dev: 0.2335 +/- 0.0042	Std Dev: 0.3042 +/- 0.0034	Std Dev: 0.1986 +/- 0.0036



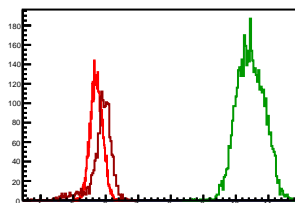
Cycle 7, NegHel

Entries: 1513	Entries: 4764	Entries: 591
Mean: 5.9200 +/- 0.0047	Mean: 10.7292 +/- 0.0039	Mean: 5.5286 +/- 0.0078
Std Dev: 0.1809 +/- 0.0033	Std Dev: 0.2674 +/- 0.0027	Std Dev: 0.1896 +/- 0.0055



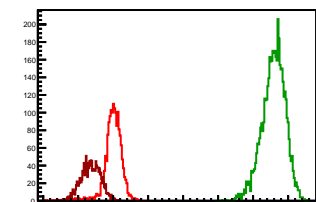
Cycle 8, NegHel

Entries: 3966	Entries: 4744	Entries: 1690
Mean: 5.7168 +/- 0.0030	Mean: 10.4516 +/- 0.0061	Mean: 5.8662 +/- 0.0084
Std Dev: 0.1895 +/- 0.0021	Std Dev: 0.4193 +/- 0.0043	Std Dev: 0.3445 +/- 0.0059



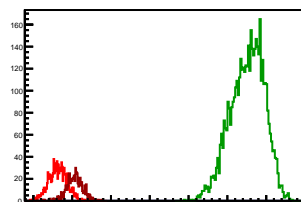
Cycle 9, NegHel

Entries: 1655	Entries: 4756	Entries: 1512
Mean: 5.9980 +/- 0.0065	Mean: 10.5869 +/- 0.0048	Mean: 5.3613 +/- 0.0070
Std Dev: 0.2632 +/- 0.0046	Std Dev: 0.3286 +/- 0.0034	Std Dev: 0.2728 +/- 0.0050



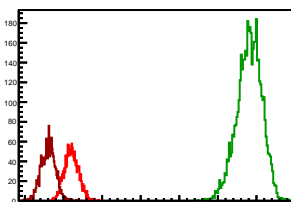
Cycle 10, NegHel

Entries: 1068	Entries: 4798	Entries: 578
Mean: 5.6279 +/- 0.0072	Mean: 10.5154 +/- 0.0063	Mean: 6.0602 +/- 0.0090
Std Dev: 0.2346 +/- 0.0051	Std Dev: 0.4357 +/- 0.0044	Std Dev: 0.2172 +/- 0.0064



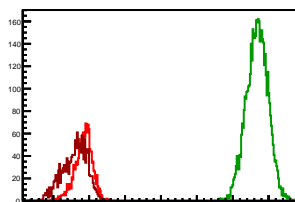
Cycle 11, NegHel

Entries: 1642	Entries: 4802	Entries: 1533
Mean: 6.2075 +/- 0.0046	Mean: 10.8141 +/- 0.0046	Mean: 5.6017 +/- 0.0048
Std Dev: 0.1869 +/- 0.0033	Std Dev: 0.3193 +/- 0.0033	Std Dev: 0.1884 +/- 0.0034



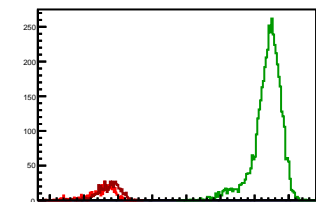
Cycle 12, NegHel

Entries: 1549	Entries: 4811	Entries: 1641
Mean: 5.8403 +/- 0.0062	Mean: 10.6812 +/- 0.0043	Mean: 5.5979 +/- 0.0085
Std Dev: 0.2451 +/- 0.0044	Std Dev: 0.2997 +/- 0.0031	Std Dev: 0.3429 +/- 0.0060



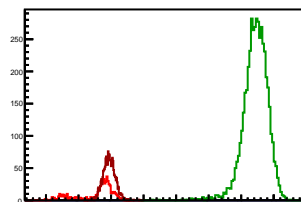
Cycle 13, NegHel

Entries: 575	Entries: 4743	Entries: 592
Mean: 5.5078 +/- 0.0166	Mean: 10.3721 +/- 0.0061	Mean: 5.7226 +/- 0.0139
Std Dev: 0.3974 +/- 0.0117	Std Dev: 0.4235 +/- 0.0043	Std Dev: 0.3394 +/- 0.0099



Cycle 14, NegHel

Entries: 589	Entries: 4781	Entries: 1631
Mean: 5.5453 +/- 0.0235	Mean: 10.4364 +/- 0.0055	Mean: 5.9409 +/- 0.0045
Std Dev: 0.5698 +/- 0.0166	Std Dev: 0.3791 +/- 0.0039	Std Dev: 0.1835 +/- 0.0032

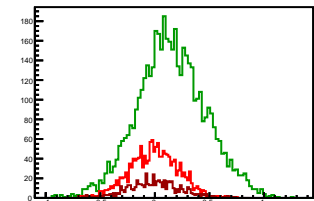


Cycle 1, Diffs

Entries: 1592 Entries: 4821 Entries: 573

Mean: -0.0057 +/- 0.0056 Mean: 0.1500 +/- 0.0045 Mean: -0.0038 +/- 0.0098

Std Dev: 0.2235 +/- 0.0040 Std Dev: 0.3144 +/- 0.0032 Std Dev: 0.2354 +/- 0.0070

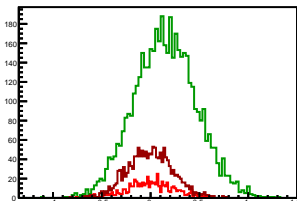


Cycle 2, Diffs

Entries: 574 Entries: 4763 Entries: 1510

Mean: 0.0010 +/- 0.0101 Mean: 0.1511 +/- 0.0046 Mean: -0.0043 +/- 0.0060

Std Dev: 0.2417 +/- 0.0071 Std Dev: 0.3184 +/- 0.0033 Std Dev: 0.2314 +/- 0.0042

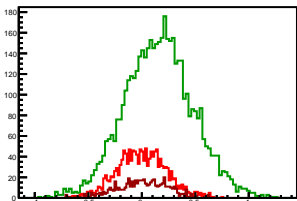


Cycle 3, Diffs

Entries: 1519 Entries: 4742 Entries: 608

Mean: -0.0034 +/- 0.0059 Mean: 0.1551 +/- 0.0047 Mean: 0.0005 +/- 0.0096

Std Dev: 0.2314 +/- 0.0042 Std Dev: 0.3214 +/- 0.0033 Std Dev: 0.2361 +/- 0.0068

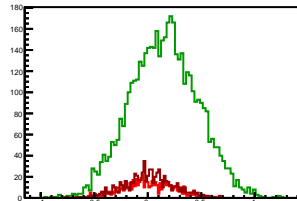


Cycle 4, Diffs

Entries: 604 Entries: 4748 Entries: 716

Mean: 0.0023 +/- 0.0095 Mean: 0.1500 +/- 0.0046 Mean: 0.0101 +/- 0.0088

Std Dev: 0.2346 +/- 0.0067 Std Dev: 0.3144 +/- 0.0032 Std Dev: 0.2353 +/- 0.0062

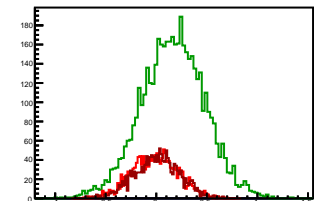


Cycle 5, Diffs

Entries: 1536 Entries: 4803 Entries: 1495

Mean: -0.0118 +/- 0.0059 Mean: 0.1629 +/- 0.0045 Mean: 0.0066 +/- 0.0058

Std Dev: 0.2298 +/- 0.0041 Std Dev: 0.3152 +/- 0.0032 Std Dev: 0.2232 +/- 0.0041

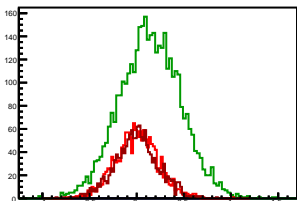


Cycle 6, Diffs

Entries: 1510 Entries: 3936 Entries: 1498

Mean: -0.0013 +/- 0.0059 Mean: 0.1432 +/- 0.0051 Mean: -0.0020 +/- 0.0060

Std Dev: 0.2293 +/- 0.0042 Std Dev: 0.3227 +/- 0.0036 Std Dev: 0.2322 +/- 0.0042

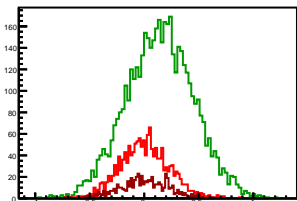


Cycle 7, Diffs

Entries: 1513 Entries: 4764 Entries: 591

Mean: 0.0045 +/- 0.0057 Mean: 0.1431 +/- 0.0045 Mean: 0.0006 +/- 0.0090

Std Dev: 0.2223 +/- 0.0040 Std Dev: 0.3088 +/- 0.0032 Std Dev: 0.2200 +/- 0.0064

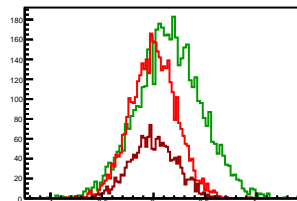


Cycle 8, Diffs

Entries: 3966 Entries: 4744 Entries: 1690

Mean: 0.0001 +/- 0.0035 Mean: 0.1517 +/- 0.0046 Mean: -0.0014 +/- 0.0054

Std Dev: 0.2223 +/- 0.0025 Std Dev: 0.3150 +/- 0.0032 Std Dev: 0.2226 +/- 0.0038

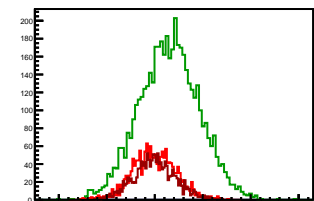


Cycle 9, Diffs

Entries: 1655 Entries: 4756 Entries: 1512

Mean: -0.0057 +/- 0.0057 Mean: 0.1486 +/- 0.0045 Mean: -0.0023 +/- 0.0056

Std Dev: 0.2305 +/- 0.0040 Std Dev: 0.3125 +/- 0.0032 Std Dev: 0.2180 +/- 0.0040

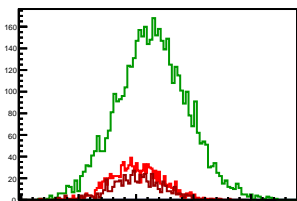


Cycle 10, Diffs

Entries: 1068 Entries: 4798 Entries: 578

Mean: 0.0046 +/- 0.0067 Mean: 0.1421 +/- 0.0044 Mean: 0.0052 +/- 0.0097

Std Dev: 0.2183 +/- 0.0047 Std Dev: 0.3060 +/- 0.0031 Std Dev: 0.2331 +/- 0.0069

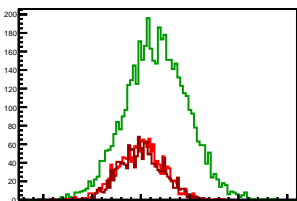


Cycle 11, Diffs

Entries: 1642 Entries: 4802 Entries: 1533

Mean: -0.0000 +/- 0.0056 Mean: 0.1591 +/- 0.0046 Mean: 0.0039 +/- 0.0057

Std Dev: 0.2284 +/- 0.0040 Std Dev: 0.3160 +/- 0.0032 Std Dev: 0.2219 +/- 0.0040

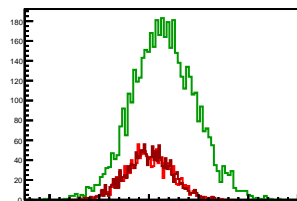


Cycle 12, Diffs

Entries: 1549 Entries: 4811 Entries: 1641

Mean: 0.0024 +/- 0.0058 Mean: 0.1508 +/- 0.0046 Mean: -0.0020 +/- 0.0056

Std Dev: 0.2302 +/- 0.0041 Std Dev: 0.3162 +/- 0.0032 Std Dev: 0.2250 +/- 0.0039

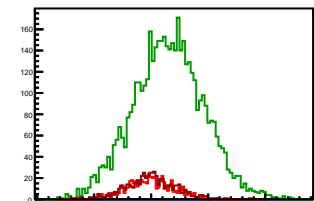


Cycle 13, Diffs

Entries: 575 Entries: 4743 Entries: 592

Mean: -0.0147 +/- 0.0088 Mean: 0.1516 +/- 0.0045 Mean: -0.0047 +/- 0.0090

Std Dev: 0.2122 +/- 0.0063 Std Dev: 0.3086 +/- 0.0032 Std Dev: 0.2178 +/- 0.0063

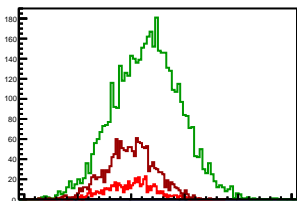


Cycle 14, Diffs

Entries: 589 Entries: 4781 Entries: 1631

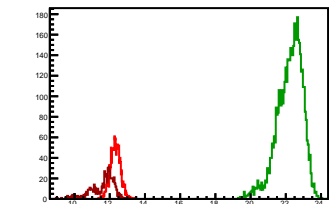
Mean: -0.0055 +/- 0.0096 Mean: 0.1496 +/- 0.0045 Mean: -0.0065 +/- 0.0057

Std Dev: 0.2328 +/- 0.0068 Std Dev: 0.3113 +/- 0.0032 Std Dev: 0.2305 +/- 0.0040



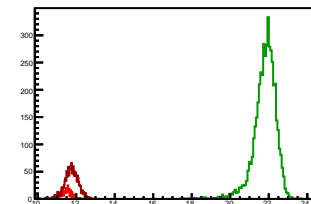
Cycle 1, Sums

Entries: 1592	Entries: 4821	Entries: 573
Mean: 12.3215 +/- 0.0072	Mean: 22.2302 +/- 0.0103	Mean: 11.5937 +/- 0.0287
Std Dev: 0.2869 +/- 0.0051	Std Dev: 0.7156 +/- 0.0073	Std Dev: 0.6861 +/- 0.0203



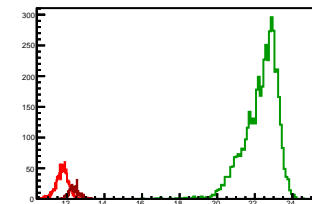
Cycle 2, Sums

Entries: 574	Entries: 4763	Entries: 1510
Mean: 11.4707 +/- 0.0109	Mean: 21.7936 +/- 0.0087	Mean: 11.7459 +/- 0.0093
Std Dev: 0.2608 +/- 0.0077	Std Dev: 0.5986 +/- 0.0061	Std Dev: 0.3665 +/- 0.0066



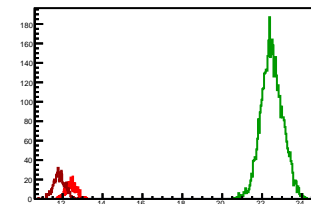
Cycle 3, Sums

Entries: 1519	Entries: 4742	Entries: 608
Mean: 11.7518 +/- 0.0085	Mean: 22.3134 +/- 0.0130	Mean: 12.3860 +/- 0.0106
Std Dev: 0.3311 +/- 0.0060	Std Dev: 0.8942 +/- 0.0092	Std Dev: 0.2668 +/- 0.0077



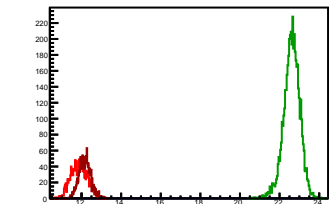
Cycle 4, Sums

Entries: 604	Entries: 4748	Entries: 716
Mean: 12.4243 +/- 0.0109	Mean: 22.4948 +/- 0.0079	Mean: 11.8355 +/- 0.0109
Std Dev: 0.2688 +/- 0.0077	Std Dev: 0.5439 +/- 0.0056	Std Dev: 0.2921 +/- 0.0077



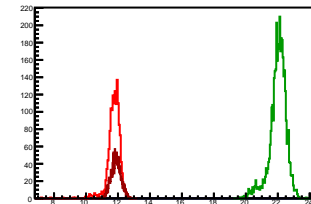
Cycle 5, Sums

Entries: 1536	Entries: 4803	Entries: 1495
Mean: 11.8782 +/- 0.0107	Mean: 22.6107 +/- 0.0059	Mean: 12.1657 +/- 0.0076
Std Dev: 0.4187 +/- 0.0076	Std Dev: 0.4122 +/- 0.0042	Std Dev: 0.2922 +/- 0.0053



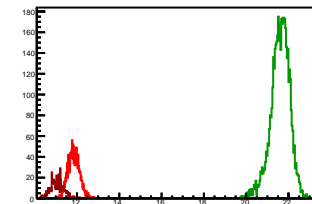
Cycle 6, Sums

Entries: 1510	Entries: 3936	Entries: 1498
Mean: 11.7472 +/- 0.0106	Mean: 22.0054 +/- 0.0084	Mean: 11.8720 +/- 0.0080
Std Dev: 0.4105 +/- 0.0075	Std Dev: 0.5257 +/- 0.0059	Std Dev: 0.3103 +/- 0.0057



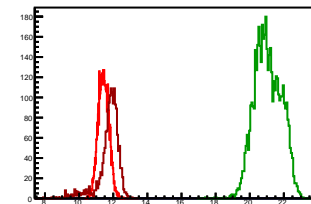
Cycle 7, Sums

Entries: 1513	Entries: 4764	Entries: 591
Mean: 11.8444 +/- 0.0070	Mean: 21.6014 +/- 0.0065	Mean: 11.0578 +/- 0.0125
Std Dev: 0.2707 +/- 0.0049	Std Dev: 0.4475 +/- 0.0046	Std Dev: 0.3036 +/- 0.0088



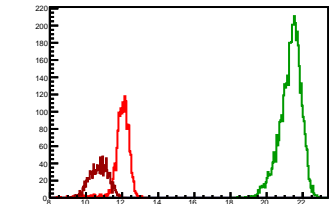
Cycle 8, Sums

Entries: 3966	Entries: 4744	Entries: 1690
Mean: 11.4338 +/- 0.0049	Mean: 21.0549 +/- 0.0113	Mean: 11.7310 +/- 0.0159
Std Dev: 0.3092 +/- 0.0035	Std Dev: 0.7759 +/- 0.0080	Std Dev: 0.6556 +/- 0.0113



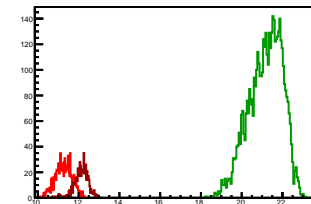
Cycle 9, Sums

Entries: 1655	Entries: 4756	Entries: 1512
Mean: 11.9902 +/- 0.0115	Mean: 21.3224 +/- 0.0085	Mean: 10.7202 +/- 0.0129
Std Dev: 0.4684 +/- 0.0081	Std Dev: 0.5857 +/- 0.0060	Std Dev: 0.5024 +/- 0.0091



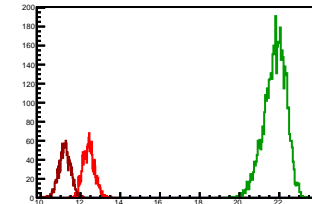
Cycle 10, Sums

Entries: 1068	Entries: 4798	Entries: 578
Mean: 11.2604 +/- 0.0126	Mean: 21.1730 +/- 0.0119	Mean: 12.1256 +/- 0.0149
Std Dev: 0.4103 +/- 0.0089	Std Dev: 0.8211 +/- 0.0084	Std Dev: 0.3575 +/- 0.0105



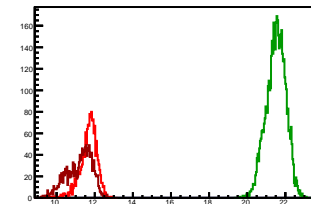
Cycle 11, Sums

Entries: 1642	Entries: 4802	Entries: 1533
Mean: 12.4149 +/- 0.0073	Mean: 21.7874 +/- 0.0081	Mean: 11.2074 +/- 0.0075
Std Dev: 0.2941 +/- 0.0051	Std Dev: 0.5580 +/- 0.0057	Std Dev: 0.2942 +/- 0.0053



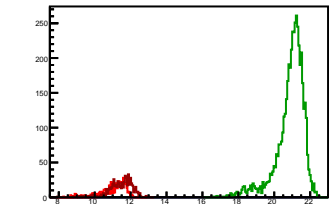
Cycle 12, Sums

Entries: 1549	Entries: 4811	Entries: 1641
Mean: 11.6831 +/- 0.0110	Mean: 21.5132 +/- 0.0074	Mean: 11.1937 +/- 0.0162
Std Dev: 0.4342 +/- 0.0078	Std Dev: 0.5108 +/- 0.0052	Std Dev: 0.6561 +/- 0.0115



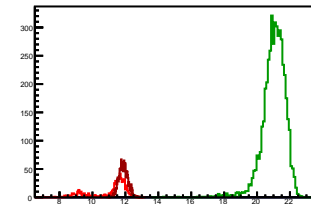
Cycle 13, Sums

Entries: 575	Entries: 4743	Entries: 592
Mean: 11.0008 +/- 0.0311	Mean: 20.8958 +/- 0.0115	Mean: 11.4406 +/- 0.0269
Std Dev: 0.7452 +/- 0.0220	Std Dev: 0.7912 +/- 0.0081	Std Dev: 0.6537 +/- 0.0190



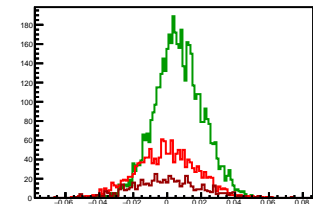
Cycle 14, Sums

Entries: 589	Entries: 4781	Entries: 1631
Mean: 11.0851 +/- 0.0457	Mean: 21.0223 +/- 0.0101	Mean: 11.8752 +/- 0.0069
Std Dev: 1.1084 +/- 0.0323	Std Dev: 0.6988 +/- 0.0071	Std Dev: 0.2805 +/- 0.0049



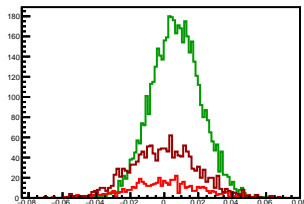
Cycle 1, Asyms

Entries: 1592	Entries: 4821	Entries: 573
Mean: -0.0004 ± 0.0005	Mean: 0.0068 ± 0.0002	Mean: -0.0004 ± 0.0009
Std Dev: 0.0181 ± 0.0003	Std Dev: 0.0141 ± 0.0001	Std Dev: 0.0204 ± 0.0006



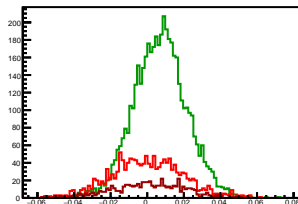
Cycle 2, Asyms

Entries: 574	Entries: 4763	Entries: 1510
Mean: 0.0001 ± 0.0009	Mean: 0.0069 ± 0.0002	Mean: -0.0004 ± 0.0005
Std Dev: 0.0211 ± 0.0006	Std Dev: 0.0146 ± 0.0001	Std Dev: 0.0197 ± 0.0004



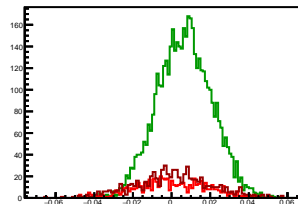
Cycle 3, Asyms

Entries: 1519	Entries: 4742	Entries: 608
Mean: -0.0003 ± 0.0005	Mean: 0.0070 ± 0.0002	Mean: 0.0001 ± 0.0008
Std Dev: 0.0196 ± 0.0004	Std Dev: 0.0145 ± 0.0001	Std Dev: 0.0190 ± 0.0005



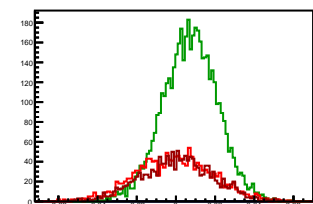
Cycle 4, Asyms

Entries: 604	Entries: 4748	Entries: 716
Mean: 0.0002 ± 0.0008	Mean: 0.0067 ± 0.0002	Mean: 0.0008 ± 0.0007
Std Dev: 0.0189 ± 0.0005	Std Dev: 0.0140 ± 0.0001	Std Dev: 0.0198 ± 0.0005



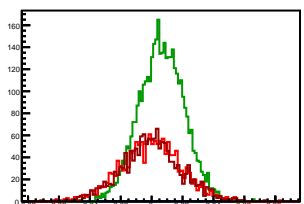
Cycle 5, Asyms

Entries: 1536	Entries: 4803	Entries: 1495
Mean: -0.0010 ± 0.0005	Mean: 0.0072 ± 0.0002	Mean: 0.0005 ± 0.0005
Std Dev: 0.0194 ± 0.0003	Std Dev: 0.0139 ± 0.0001	Std Dev: 0.0183 ± 0.0003



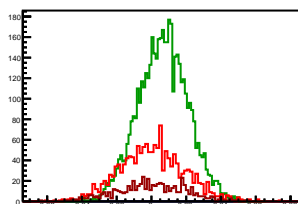
Cycle 6, Asyms

Entries: 1510	Entries: 3936	Entries: 1498
Mean: -0.0001 ± 0.0005	Mean: 0.0065 ± 0.0002	Mean: -0.0001 ± 0.0005
Std Dev: 0.0195 ± 0.0004	Std Dev: 0.0147 ± 0.0002	Std Dev: 0.0195 ± 0.0004



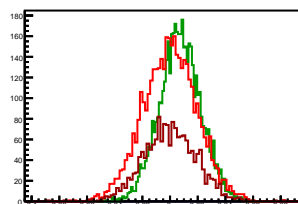
Cycle 7, Asyms

Entries: 1513	Entries: 4764	Entries: 591
Mean: 0.0004 ± 0.0005	Mean: 0.0066 ± 0.0002	Mean: 0.0001 ± 0.0008
Std Dev: 0.0187 ± 0.0003	Std Dev: 0.0143 ± 0.0001	Std Dev: 0.0199 ± 0.0006



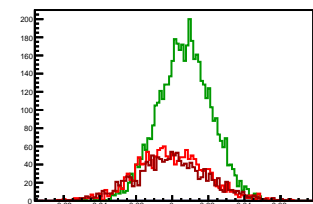
Cycle 8, Asyms

Entries: 3966	Entries: 4744	Entries: 1690
Mean: 0.0000 ± 0.0003	Mean: 0.0072 ± 0.0002	Mean: -0.0001 ± 0.0005
Std Dev: 0.0194 ± 0.0002	Std Dev: 0.0150 ± 0.0002	Std Dev: 0.0192 ± 0.0003



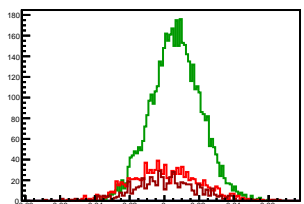
Cycle 9, Asyms

Entries: 1655	Entries: 4756	Entries: 1512
Mean: -0.0005 ± 0.0005	Mean: 0.0070 ± 0.0002	Mean: -0.0002 ± 0.0005
Std Dev: 0.0192 ± 0.0003	Std Dev: 0.0147 ± 0.0002	Std Dev: 0.0203 ± 0.0004



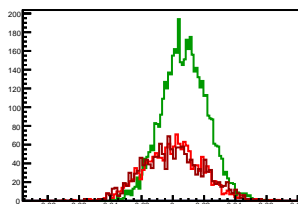
Cycle 10, Asyms

Entries: 1068	Entries: 4798	Entries: 578
Mean: 0.0004 ± 0.0006	Mean: 0.0067 ± 0.0002	Mean: 0.0005 ± 0.0008
Std Dev: 0.0194 ± 0.0004	Std Dev: 0.0145 ± 0.0001	Std Dev: 0.0192 ± 0.0006



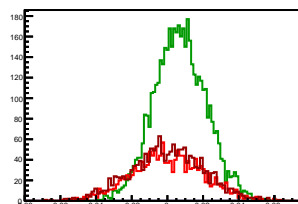
Cycle 11, Asyms

Entries: 1642	Entries: 4802	Entries: 1533
Mean: 0.0000 ± 0.0005	Mean: 0.0073 ± 0.0002	Mean: 0.0004 ± 0.0005
Std Dev: 0.0184 ± 0.0003	Std Dev: 0.0145 ± 0.0001	Std Dev: 0.0198 ± 0.0004



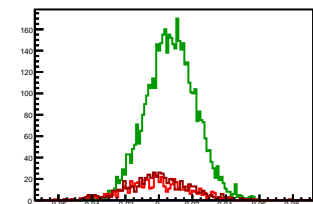
Cycle 12, Asyms

Entries: 1549	Entries: 4811	Entries: 1641
Mean: 0.0002 ± 0.0005	Mean: 0.0070 ± 0.0002	Mean: -0.0002 ± 0.0005
Std Dev: 0.0197 ± 0.0004	Std Dev: 0.0147 ± 0.0001	Std Dev: 0.0202 ± 0.0004



Cycle 13, Asyms

Entries: 575	Entries: 4743	Entries: 592
Mean: -0.0012 ± 0.0008	Mean: 0.0073 ± 0.0002	Mean: -0.0005 ± 0.0008
Std Dev: 0.0193 ± 0.0006	Std Dev: 0.0148 ± 0.0002	Std Dev: 0.0190 ± 0.0006



Cycle 14, Asyms

Entries: 589	Entries: 4781	Entries: 1631
Mean: -0.0004 ± 0.0009	Mean: 0.0071 ± 0.0002	Mean: -0.0005 ± 0.0005
Std Dev: 0.0213 ± 0.0006	Std Dev: 0.0148 ± 0.0002	Std Dev: 0.0194 ± 0.0003

