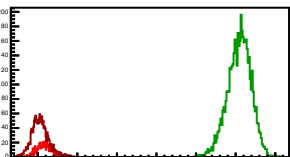
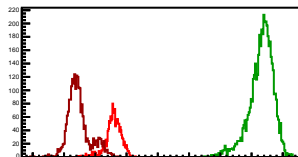


Cycle 1, PosHel

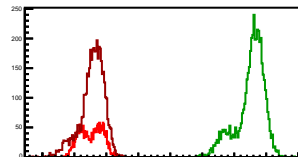
Entries: 597	Entries: 4815	Entries: 1543
Mean: 6.1645 \pm 0.0076	Mean: 11.0922 \pm 0.0043	Mean: 6.0613 \pm 0.0056
Std Dev: 0.1862 \pm 0.0054	Std Dev: 0.2960 \pm 0.0030	Std Dev: 0.2194 \pm 0.0039

**Cycle 2, PosHel**

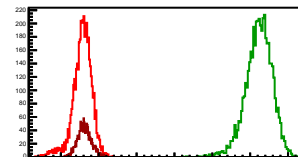
Entries: 1553	Entries: 4790	Entries: 2265
Mean: 6.5832 \pm 0.0065	Mean: 11.3107 \pm 0.0056	Mean: 5.4714 \pm 0.0076
Std Dev: 0.2554 \pm 0.0046	Std Dev: 0.3908 \pm 0.0040	Std Dev: 0.3615 \pm 0.0054

**Cycle 3, PosHel**

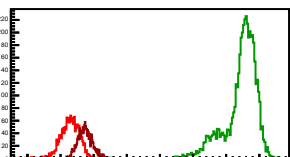
Entries: 2209	Entries: 4805	Entries: 4470
Mean: 5.5285 \pm 0.0075	Mean: 10.5090 \pm 0.0065	Mean: 5.5637 \pm 0.0056
Std Dev: 0.3516 \pm 0.0053	Std Dev: 0.4476 \pm 0.0046	Std Dev: 0.3758 \pm 0.0040

**Cycle 4, PosHel**

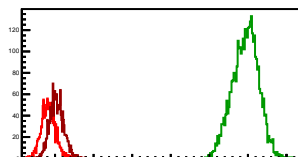
Entries: 4443	Entries: 4782	Entries: 1537
Mean: 5.5633 \pm 0.0038	Mean: 10.2286 \pm 0.0051	Mean: 5.6213 \pm 0.0046
Std Dev: 0.2563 \pm 0.0027	Std Dev: 0.3512 \pm 0.0036	Std Dev: 0.1813 \pm 0.0033

**Cycle 5, PosHel**

Entries: 1555	Entries: 4792	Entries: 1536
Mean: 5.2834 \pm 0.0073	Mean: 10.4446 \pm 0.0070	Mean: 5.7464 \pm 0.0055
Std Dev: 0.2877 \pm 0.0052	Std Dev: 0.4866 \pm 0.0050	Std Dev: 0.2158 \pm 0.0039

**Cycle 6, PosHel**

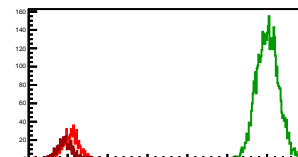
Entries: 1543	Entries: 3877	Entries: 1592
Mean: 5.8308 \pm 0.0046	Mean: 10.9369 \pm 0.0054	Mean: 6.0435 \pm 0.0045
Std Dev: 0.1825 \pm 0.0033	Std Dev: 0.3349 \pm 0.0038	Std Dev: 0.1802 \pm 0.0032

**Cycle 7, PosHel**

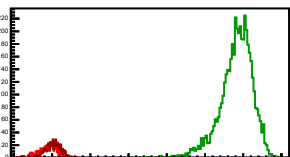
Entries: 1575	Entries: 4694	Entries: 663
Mean: 6.0588 \pm 0.0046	Mean: 11.1120 \pm 0.0037	Mean: 6.1657 \pm 0.0066
Std Dev: 0.1839 \pm 0.0033	Std Dev: 0.2529 \pm 0.0026	Std Dev: 0.1702 \pm 0.0047

**Cycle 8, PosHel**

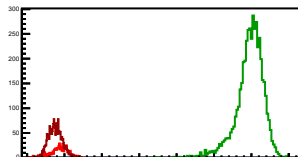
Entries: 646	Entries: 4827	Entries: 618
Mean: 6.0873 \pm 0.0075	Mean: 11.0124 \pm 0.0039	Mean: 5.9169 \pm 0.0073
Std Dev: 0.1894 \pm 0.0053	Std Dev: 0.2717 \pm 0.0028	Std Dev: 0.1804 \pm 0.0051

**Cycle 9, PosHel**

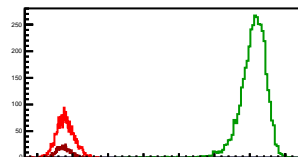
Entries: 617	Entries: 4729	Entries: 740
Mean: 5.8866 \pm 0.0101	Mean: 10.8181 \pm 0.0062	Mean: 6.0335 \pm 0.0071
Std Dev: 0.2502 \pm 0.0071	Std Dev: 0.4239 \pm 0.0044	Std Dev: 0.1928 \pm 0.0050

**Cycle 10, PosHel**

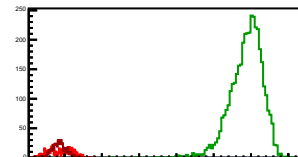
Entries: 700	Entries: 4794	Entries: 2119
Mean: 5.8512 \pm 0.0095	Mean: 10.9485 \pm 0.0055	Mean: 5.7557 \pm 0.0040
Std Dev: 0.2519 \pm 0.0067	Std Dev: 0.3821 \pm 0.0039	Std Dev: 0.1864 \pm 0.0029

**Cycle 11, PosHel**

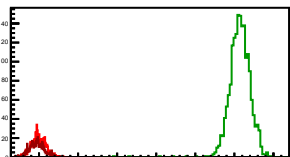
Entries: 2099	Entries: 3995	Entries: 657
Mean: 5.7922 \pm 0.0055	Mean: 11.0934 \pm 0.0060	Mean: 5.7458 \pm 0.0078
Std Dev: 0.2527 \pm 0.0039	Std Dev: 0.3823 \pm 0.0043	Std Dev: 0.2005 \pm 0.0055

**Cycle 12, PosHel**

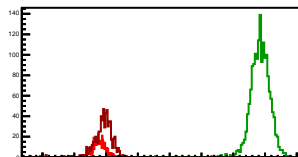
Entries: 645	Entries: 3980	Entries: 674
Mean: 5.8720 \pm 0.0124	Mean: 10.8708 \pm 0.0070	Mean: 5.8493 \pm 0.0073
Std Dev: 0.3143 \pm 0.0088	Std Dev: 0.4437 \pm 0.0050	Std Dev: 0.1907 \pm 0.0052

**Cycle 13, PosHel**

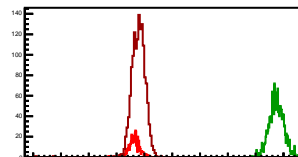
Entries: 661	Entries: 1786	Entries: 552
Mean: 5.9915 \pm 0.0071	Mean: 11.1395 \pm 0.0065	Mean: 5.9454 \pm 0.0078
Std Dev: 0.1814 \pm 0.0050	Std Dev: 0.2732 \pm 0.0046	Std Dev: 0.1830 \pm 0.0055

**Cycle 14, PosHel**

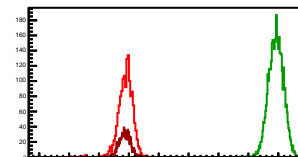
Entries: 559	Entries: 4654	Entries: 632
Mean: 5.7693 \pm 0.0086	Mean: 10.8477 \pm 0.0076	Mean: 5.9165 \pm 0.0119
Std Dev: 0.2045 \pm 0.0061	Std Dev: 0.3071 \pm 0.0053	Std Dev: 0.2997 \pm 0.0084

**Cycle 15, PosHel**

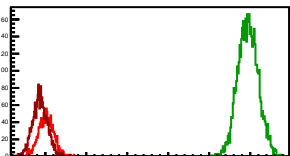
Entries: 465	Entries: 1845	Entries: 1478
Mean: 5.6325 \pm 0.0086	Mean: 10.7451 \pm 0.0060	Mean: 5.7881 \pm 0.0067
Std Dev: 0.1857 \pm 0.0061	Std Dev: 0.2597 \pm 0.0043	Std Dev: 0.2573 \pm 0.0047

**Cycle 16, PosHel**

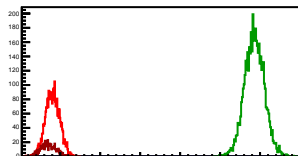
Entries: 1493	Entries: 4254	Entries: 1059
Mean: 5.8888 \pm 0.0067	Mean: 10.9236 \pm 0.0038	Mean: 5.8651 \pm 0.0055
Std Dev: 0.2606 \pm 0.0048	Std Dev: 0.2479 \pm 0.0027	Std Dev: 0.1800 \pm 0.0039

**Cycle 17, PosHel**

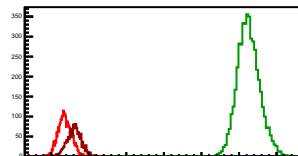
Entries: 1417	Entries: 4827	Entries: 2121
Mean: 6.0176 \pm 0.0049	Mean: 10.9470 \pm 0.0036	Mean: 5.8695 \pm 0.0039
Std Dev: 0.1837 \pm 0.0035	Std Dev: 0.2497 \pm 0.0025	Std Dev: 0.1818 \pm 0.0028

**Cycle 18, PosHel**

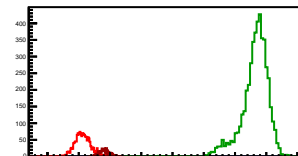
Entries: 2721	Entries: 4747	Entries: 607
Mean: 5.8075 \pm 0.0034	Mean: 10.8605 \pm 0.0036	Mean: 5.7073 \pm 0.0074
Std Dev: 0.1771 \pm 0.0024	Std Dev: 0.2470 \pm 0.0025	Std Dev: 0.1834 \pm 0.0053

**Cycle 19, PosHel**

Entries: 2832	Entries: 4746	Entries: 1482
Mean: 5.3651 \pm 0.0034	Mean: 10.2499 \pm 0.0044	Mean: 5.6077 \pm 0.0053
Std Dev: 0.1800 \pm 0.0024	Std Dev: 0.3051 \pm 0.0031	Std Dev: 0.2042 \pm 0.0039

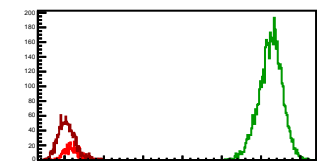
**Cycle 20, PosHel**

Entries: 1492	Entries: 4755	Entries: 675
Mean: 5.1233 \pm 0.0071	Mean: 10.6288 \pm 0.0067	Mean: 5.8200 \pm 0.0064
Std Dev: 0.2759 \pm 0.0051	Std Dev: 0.4588 \pm 0.0047	Std Dev: 0.1663 \pm 0.0045

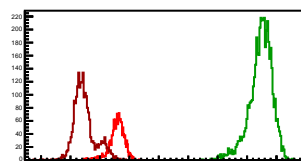


Cycle 1, NegHel

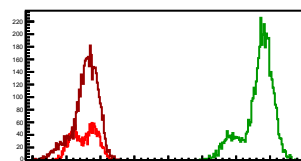
Entries: 597	Entries: 4815	Entries: 1543
Mean: 6.1664 +/- 0.0073	Mean: 11.2390 +/- 0.0043	Mean: 6.0581 +/- 0.0057
Std Dev: 0.1794 +/- 0.0052	Std Dev: 0.2983 +/- 0.0030	Std Dev: 0.2242 +/- 0.0040

**Cycle 2, NegHel**

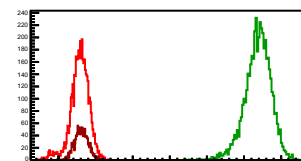
Entries: 1553	Entries: 4790	Entries: 2265
Mean: 6.5837 +/- 0.0064	Mean: 11.4630 +/- 0.0057	Mean: 5.4727 +/- 0.0077
Std Dev: 0.2514 +/- 0.0045	Std Dev: 0.3947 +/- 0.0040	Std Dev: 0.3668 +/- 0.0055

**Cycle 3, NegHel**

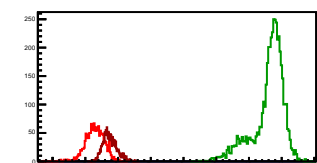
Entries: 2209	Entries: 4805	Entries: 4470
Mean: 5.5307 +/- 0.0076	Mean: 10.6545 +/- 0.0065	Mean: 5.5661 +/- 0.0057
Std Dev: 0.3566 +/- 0.0054	Std Dev: 0.4520 +/- 0.0046	Std Dev: 0.3784 +/- 0.0040

**Cycle 4, NegHel**

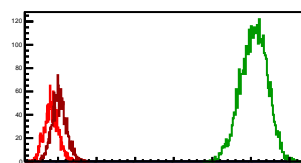
Entries: 4443	Entries: 4782	Entries: 1537
Mean: 5.5669 +/- 0.0039	Mean: 10.3736 +/- 0.0051	Mean: 5.6158 +/- 0.0046
Std Dev: 0.2576 +/- 0.0027	Std Dev: 0.3551 +/- 0.0036	Std Dev: 0.1813 +/- 0.0033

**Cycle 5, NegHel**

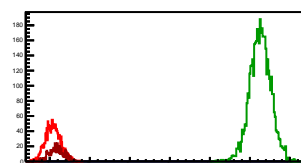
Entries: 1555	Entries: 4792	Entries: 1536
Mean: 5.2861 +/- 0.0074	Mean: 10.5944 +/- 0.0070	Mean: 5.7494 +/- 0.0055
Std Dev: 0.2206 +/- 0.0052	Std Dev: 0.4873 +/- 0.0050	Std Dev: 0.2159 +/- 0.0039

**Cycle 6, NegHel**

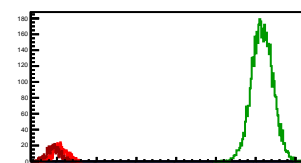
Entries: 1543	Entries: 3877	Entries: 1592
Mean: 5.8295 +/- 0.0047	Mean: 11.0793 +/- 0.0055	Mean: 6.0326 +/- 0.0046
Std Dev: 0.1845 +/- 0.0033	Std Dev: 0.3444 +/- 0.0039	Std Dev: 0.1855 +/- 0.0033

**Cycle 7, NegHel**

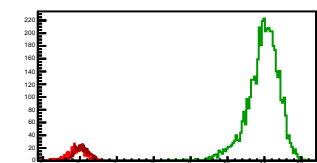
Entries: 1575	Entries: 4694	Entries: 663
Mean: 6.0771 +/- 0.0047	Mean: 11.2604 +/- 0.0038	Mean: 6.1720 +/- 0.0069
Std Dev: 0.1855 +/- 0.0033	Std Dev: 0.2668 +/- 0.0027	Std Dev: 0.1787 +/- 0.0049

**Cycle 8, NegHel**

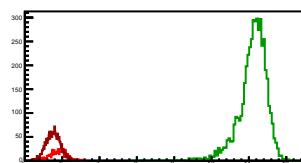
Entries: 646	Entries: 4827	Entries: 618
Mean: 6.0764 +/- 0.0072	Mean: 11.1664 +/- 0.0039	Mean: 5.9204 +/- 0.0071
Std Dev: 0.1828 +/- 0.0051	Std Dev: 0.2686 +/- 0.0027	Std Dev: 0.1756 +/- 0.0050

**Cycle 9, NegHel**

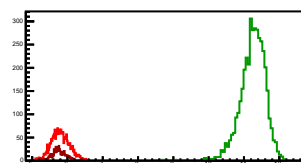
Entries: 617	Entries: 4729	Entries: 740
Mean: 5.8958 +/- 0.0101	Mean: 10.9605 +/- 0.0063	Mean: 6.0325 +/- 0.0072
Std Dev: 0.2502 +/- 0.0071	Std Dev: 0.4344 +/- 0.0045	Std Dev: 0.1966 +/- 0.0051

**Cycle 10, NegHel**

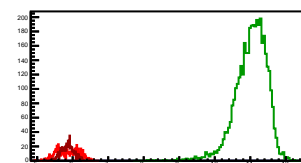
Entries: 700	Entries: 4794	Entries: 2119
Mean: 5.8622 +/- 0.0093	Mean: 11.1015 +/- 0.0056	Mean: 5.7586 +/- 0.0042
Std Dev: 0.2449 +/- 0.0065	Std Dev: 0.3845 +/- 0.0039	Std Dev: 0.1911 +/- 0.0029

**Cycle 11, NegHel**

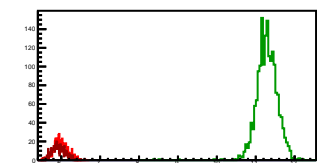
Entries: 2099	Entries: 3995	Entries: 657
Mean: 5.7985 +/- 0.0057	Mean: 11.2394 +/- 0.0061	Mean: 5.7553 +/- 0.0078
Std Dev: 0.2291 +/- 0.0040	Std Dev: 0.3865 +/- 0.0043	Std Dev: 0.2006 +/- 0.0055

**Cycle 12, NegHel**

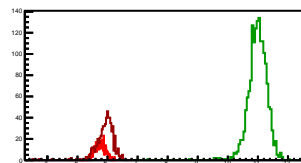
Entries: 645	Entries: 3980	Entries: 674
Mean: 5.8607 +/- 0.0124	Mean: 11.0186 +/- 0.0071	Mean: 5.8578 +/- 0.0071
Std Dev: 0.3158 +/- 0.0088	Std Dev: 0.4501 +/- 0.0050	Std Dev: 0.1834 +/- 0.0050

**Cycle 13, NegHel**

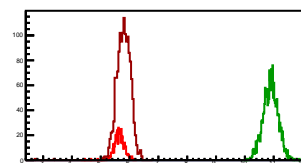
Entries: 661	Entries: 1786	Entries: 552
Mean: 5.9797 +/- 0.0050	Mean: 11.2869 +/- 0.0065	Mean: 5.9342 +/- 0.0073
Std Dev: 0.1736 +/- 0.0048	Std Dev: 0.2767 +/- 0.0046	Std Dev: 0.1705 +/- 0.0051

**Cycle 14, NegHel**

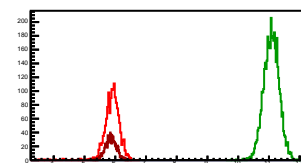
Entries: 559	Entries: 4654	Entries: 632
Mean: 5.7483 +/- 0.0078	Mean: 10.9934 +/- 0.0077	Mean: 5.9148 +/- 0.0118
Std Dev: 0.1841 +/- 0.0055	Std Dev: 0.3147 +/- 0.0055	Std Dev: 0.2967 +/- 0.0083

**Cycle 15, NegHel**

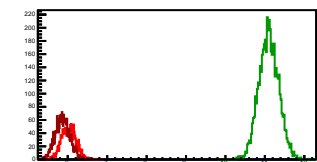
Entries: 465	Entries: 1845	Entries: 1478
Mean: 5.6382 +/- 0.0068	Mean: 10.8915 +/- 0.0061	Mean: 5.7929 +/- 0.0065
Std Dev: 0.1894 +/- 0.0062	Std Dev: 0.2612 +/- 0.0043	Std Dev: 0.2491 +/- 0.0046

**Cycle 16, NegHel**

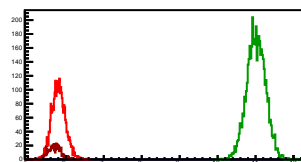
Entries: 1493	Entries: 4254	Entries: 1059
Mean: 5.8927 +/- 0.0068	Mean: 11.0786 +/- 0.0038	Mean: 5.8577 +/- 0.0055
Std Dev: 0.2638 +/- 0.0048	Std Dev: 0.2490 +/- 0.0027	Std Dev: 0.1798 +/- 0.0039

**Cycle 17, NegHel**

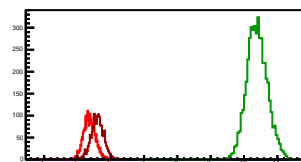
Entries: 1417	Entries: 4827	Entries: 2121
Mean: 6.0219 +/- 0.0050	Mean: 11.1007 +/- 0.0036	Mean: 5.8668 +/- 0.0041
Std Dev: 0.1869 +/- 0.0035	Std Dev: 0.2524 +/- 0.0026	Std Dev: 0.1874 +/- 0.0029

**Cycle 18, NegHel**

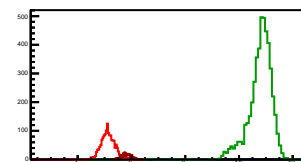
Entries: 2721	Entries: 4747	Entries: 607
Mean: 5.8092 +/- 0.0035	Mean: 11.0148 +/- 0.0036	Mean: 5.7077 +/- 0.0067
Std Dev: 0.1812 +/- 0.0025	Std Dev: 0.2483 +/- 0.0025	Std Dev: 0.1661 +/- 0.0048

**Cycle 19, NegHel**

Entries: 2832	Entries: 4746	Entries: 1482
Mean: 5.3633 +/- 0.0034	Mean: 10.3905 +/- 0.0046	Mean: 5.5951 +/- 0.0054
Std Dev: 0.1794 +/- 0.0024	Std Dev: 0.3167 +/- 0.0033	Std Dev: 0.2061 +/- 0.0039

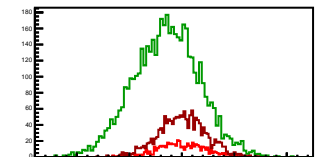
**Cycle 20, NegHel**

Entries: 1492	Entries: 4755	Entries: 675
Mean: 5.1147 +/- 0.0072	Mean: 10.7764 +/- 0.0068	Mean: 5.8122 +/- 0.0068
Std Dev: 0.2795 +/- 0.0051	Std Dev: 0.4693 +/- 0.0048	Std Dev: 0.1767 +/- 0.0048



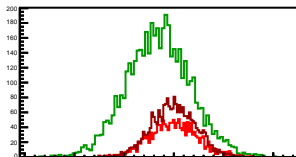
Cycle 1, Diffs

Entries: 597	Entries: 4815	Entries: 1543
Mean: -0.0019 +/- 0.0095	Mean: -0.1468 +/- 0.0045	Mean: 0.0032 +/- 0.0057
Std Dev: 0.2332 +/- 0.0067	Std Dev: 0.3139 +/- 0.0032	Std Dev: 0.2254 +/- 0.0041



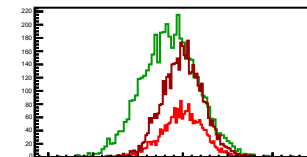
Cycle 2, Diffs

Entries: 1553	Entries: 4790	Entries: 2265
Mean: -0.0005 +/- 0.0060	Mean: -0.1523 +/- 0.0046	Mean: -0.0013 +/- 0.0047
Std Dev: 0.2353 +/- 0.0042	Std Dev: 0.3218 +/- 0.0033	Std Dev: 0.2215 +/- 0.0033



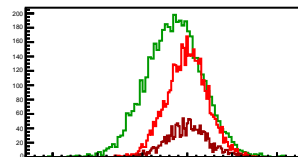
Cycle 3, Diffs

Entries: 2209	Entries: 4805	Entries: 4470
Mean: -0.0022 +/- 0.0048	Mean: -0.1456 +/- 0.0045	Mean: -0.0024 +/- 0.0034
Std Dev: 0.2248 +/- 0.0034	Std Dev: 0.3127 +/- 0.0032	Std Dev: 0.2277 +/- 0.0024



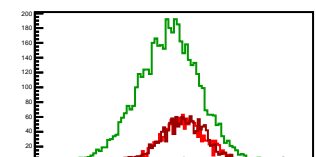
Cycle 4, Diffs

Entries: 4443	Entries: 4782	Entries: 1537
Mean: -0.0036 +/- 0.0034	Mean: -0.1450 +/- 0.0045	Mean: 0.0055 +/- 0.0058
Std Dev: 0.2280 +/- 0.0024	Std Dev: 0.3117 +/- 0.0032	Std Dev: 0.2257 +/- 0.0041



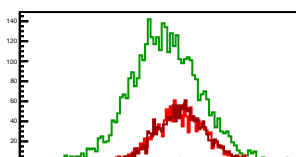
Cycle 5, Diffs

Entries: 1555	Entries: 4792	Entries: 1536
Mean: -0.0027 +/- 0.0055	Mean: -0.1498 +/- 0.0045	Mean: -0.0030 +/- 0.0058
Std Dev: 0.2173 +/- 0.0039	Std Dev: 0.3087 +/- 0.0032	Std Dev: 0.2284 +/- 0.0041



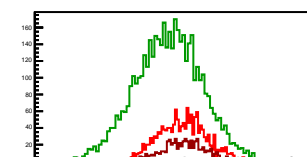
Cycle 6, Diffs

Entries: 1543	Entries: 3877	Entries: 1592
Mean: 0.0013 +/- 0.0060	Mean: -0.1424 +/- 0.0052	Mean: 0.0109 +/- 0.0059
Std Dev: 0.2374 +/- 0.0043	Std Dev: 0.3208 +/- 0.0036	Std Dev: 0.2337 +/- 0.0041



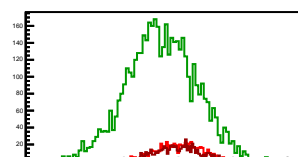
Cycle 7, Diffs

Entries: 1575	Entries: 4694	Entries: 663
Mean: -0.0184 +/- 0.0057	Mean: -0.1483 +/- 0.0046	Mean: -0.0062 +/- 0.0086
Std Dev: 0.2263 +/- 0.0040	Std Dev: 0.3169 +/- 0.0032	Std Dev: 0.2211 +/- 0.0061



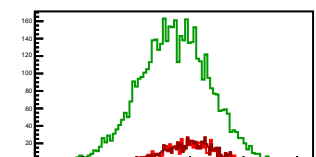
Cycle 8, Diffs

Entries: 646	Entries: 4827	Entries: 618
Mean: 0.0109 +/- 0.0088	Mean: -0.1539 +/- 0.0046	Mean: -0.0035 +/- 0.0088
Std Dev: 0.2249 +/- 0.0063	Std Dev: 0.3190 +/- 0.0032	Std Dev: 0.2180 +/- 0.0061



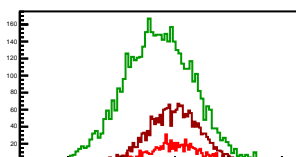
Cycle 9, Diffs

Entries: 617	Entries: 4729	Entries: 740
Mean: -0.0092 +/- 0.0095	Mean: -0.1424 +/- 0.0047	Mean: 0.0010 +/- 0.0079
Std Dev: 0.2363 +/- 0.0067	Std Dev: 0.3203 +/- 0.0032	Std Dev: 0.2149 +/- 0.0056



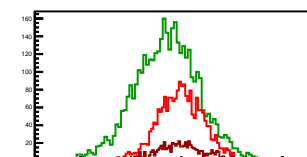
Cycle 10, Diffs

Entries: 700	Entries: 3924	Entries: 2119
Mean: -0.0110 +/- 0.0084	Mean: -0.1530 +/- 0.0046	Mean: -0.0029 +/- 0.0049
Std Dev: 0.2224 +/- 0.0059	Std Dev: 0.3212 +/- 0.0033	Std Dev: 0.2262 +/- 0.0035



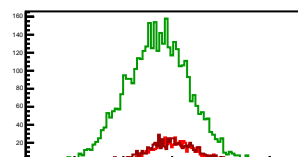
Cycle 11, Diffs

Entries: 2099	Entries: 3995	Entries: 657
Mean: -0.0063 +/- 0.0049	Mean: -0.1460 +/- 0.0050	Mean: -0.0095 +/- 0.0092
Std Dev: 0.2261 +/- 0.0035	Std Dev: 0.3187 +/- 0.0036	Std Dev: 0.2357 +/- 0.0065



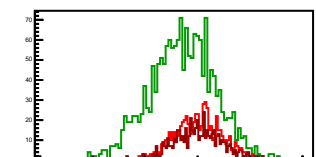
Cycle 12, Diffs

Entries: 645	Entries: 3980	Entries: 674
Mean: 0.0113 +/- 0.0086	Mean: -0.1478 +/- 0.0051	Mean: -0.0085 +/- 0.0091
Std Dev: 0.2194 +/- 0.0062	Std Dev: 0.3219 +/- 0.0036	Std Dev: 0.2359 +/- 0.0064



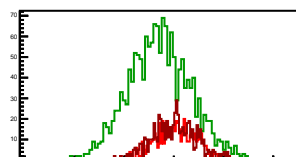
Cycle 13, Diffs

Entries: 661	Entries: 1786	Entries: 552
Mean: 0.0118 +/- 0.0089	Mean: -0.1475 +/- 0.0074	Mean: 0.0112 +/- 0.0097
Std Dev: 0.2300 +/- 0.0063	Std Dev: 0.3126 +/- 0.0052	Std Dev: 0.2280 +/- 0.0069



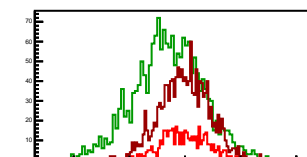
Cycle 14, Diffs

Entries: 559	Entries: 1654	Entries: 632
Mean: 0.0209 +/- 0.0094	Mean: -0.1457 +/- 0.0078	Mean: 0.0016 +/- 0.0092
Std Dev: 0.2215 +/- 0.0066	Std Dev: 0.3157 +/- 0.0055	Std Dev: 0.2305 +/- 0.0065



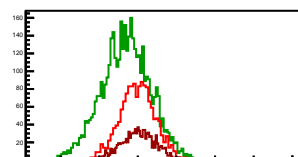
Cycle 15, Diffs

Entries: 465	Entries: 1845	Entries: 1478
Mean: -0.0057 +/- 0.0101	Mean: -0.1464 +/- 0.0072	Mean: -0.0049 +/- 0.0058
Std Dev: 0.2186 +/- 0.0072	Std Dev: 0.3076 +/- 0.0051	Std Dev: 0.2213 +/- 0.0041



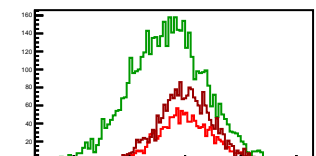
Cycle 16, Diffs

Entries: 1493	Entries: 4254	Entries: 1059
Mean: -0.0039 +/- 0.0060	Mean: -0.1550 +/- 0.0049	Mean: 0.0074 +/- 0.0069
Std Dev: 0.2311 +/- 0.0042	Std Dev: 0.3185 +/- 0.0035	Std Dev: 0.2239 +/- 0.0049



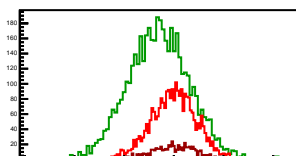
Cycle 17, Diffs

Entries: 1417	Entries: 4827	Entries: 2121
Mean: -0.0042 +/- 0.0062	Mean: -0.1537 +/- 0.0047	Mean: 0.0028 +/- 0.0050
Std Dev: 0.2338 +/- 0.0044	Std Dev: 0.3235 +/- 0.0033	Std Dev: 0.2291 +/- 0.0035



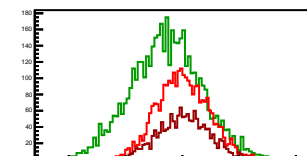
Cycle 18, Diffs

Entries: 2721	Entries: 4747	Entries: 607
Mean: -0.0017 +/- 0.0044	Mean: -0.1542 +/- 0.0045	Mean: -0.0005 +/- 0.0092
Std Dev: 0.2283 +/- 0.0031	Std Dev: 0.3105 +/- 0.0032	Std Dev: 0.2268 +/- 0.0065



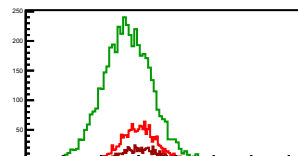
Cycle 19, Diffs

Entries: 2832	Entries: 4746	Entries: 1482
Mean: 0.0019 +/- 0.0043	Mean: -0.1407 +/- 0.0045	Mean: 0.0126 +/- 0.0059
Std Dev: 0.2284 +/- 0.0030	Std Dev: 0.3104 +/- 0.0032	Std Dev: 0.2286 +/- 0.0042



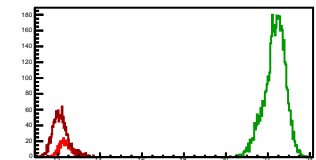
Cycle 20, Diffs

Entries: 1492	Entries: 4755	Entries: 675
Mean: 0.0086 +/- 0.0057	Mean: -0.1476 +/- 0.0046	Mean: 0.0078 +/- 0.0086
Std Dev: 0.2221 +/- 0.0041	Std Dev: 0.3168 +/- 0.0032	Std Dev: 0.2229 +/- 0.0061



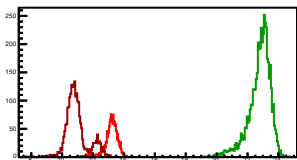
Cycle 1, Sums

Entries: 597	Entries: 4815	Entries: 1543
Mean: 12.3309 \pm 0.0115	Mean: 22.3312 \pm 0.0073	Mean: 12.1195 \pm 0.0097
Std Dev: 0.2816 \pm 0.0082	Std Dev: 0.5047 \pm 0.0051	Std Dev: 0.3821 \pm 0.0069



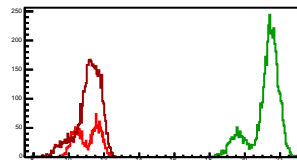
Cycle 2, Sums

Entries: 1553	Entries: 4790	Entries: 2265
Mean: 13.1669 \pm 0.0114	Mean: 22.7736 \pm 0.0104	Mean: 10.9441 \pm 0.0146
Std Dev: 0.4489 \pm 0.0081	Std Dev: 0.7165 \pm 0.0073	Std Dev: 0.6938 \pm 0.0103



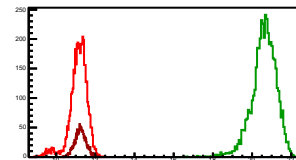
Cycle 3, Sums

Entries: 2209	Entries: 4805	Entries: 4470
Mean: 11.0593 \pm 0.0143	Mean: 21.1635 \pm 0.0122	Mean: 11.1298 \pm 0.0108
Std Dev: 0.6716 \pm 0.0101	Std Dev: 0.8435 \pm 0.0086	Std Dev: 0.7190 \pm 0.0076



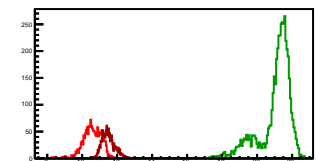
Cycle 4, Sums

Entries: 4443	Entries: 4782	Entries: 1537
Mean: 11.1302 \pm 0.0069	Mean: 20.6022 \pm 0.0092	Mean: 11.2370 \pm 0.0072
Std Dev: 0.4605 \pm 0.0049	Std Dev: 0.6338 \pm 0.0065	Std Dev: 0.2839 \pm 0.0051



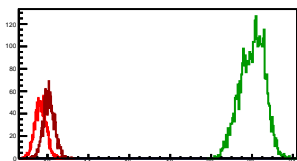
Cycle 5, Sums

Entries: 1555	Entries: 4792	Entries: 1536
Mean: 10.5695 \pm 0.0136	Mean: 21.0390 \pm 0.0133	Mean: 11.4958 \pm 0.0093
Std Dev: 0.5359 \pm 0.0096	Std Dev: 0.9237 \pm 0.0094	Std Dev: 0.3664 \pm 0.0066



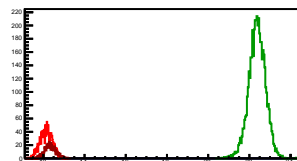
Cycle 6, Sums

Entries: 1543	Entries: 3877	Entries: 1592
Mean: 11.6603 \pm 0.0071	Mean: 22.0162 \pm 0.0096	Mean: 12.0762 \pm 0.0071
Std Dev: 0.2799 \pm 0.0050	Std Dev: 0.5989 \pm 0.0068	Std Dev: 0.2814 \pm 0.0050



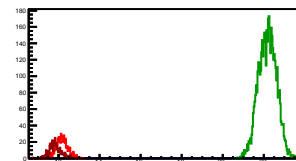
Cycle 7, Sums

Entries: 1575	Entries: 4694	Entries: 663
Mean: 12.1359 \pm 0.0074	Mean: 22.3724 \pm 0.0059	Mean: 12.3377 \pm 0.0105
Std Dev: 0.2920 \pm 0.0052	Std Dev: 0.4069 \pm 0.0042	Std Dev: 0.2701 \pm 0.0074



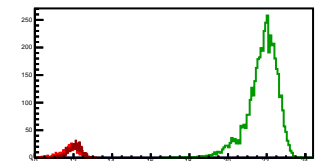
Cycle 8, Sums

Entries: 646	Entries: 4827	Entries: 618
Mean: 12.1638 \pm 0.0117	Mean: 22.1788 \pm 0.0063	Mean: 11.8372 \pm 0.0113
Std Dev: 0.2966 \pm 0.0083	Std Dev: 0.4361 \pm 0.0044	Std Dev: 0.2815 \pm 0.0080



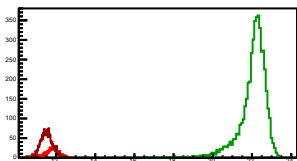
Cycle 9, Sums

Entries: 617	Entries: 4729	Entries: 740
Mean: 11.7825 \pm 0.0178	Mean: 21.7785 \pm 0.0116	Mean: 12.0659 \pm 0.0119
Std Dev: 0.4411 \pm 0.0126	Std Dev: 0.7964 \pm 0.0082	Std Dev: 0.3248 \pm 0.0084



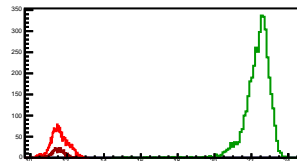
Cycle 10, Sums

Entries: 700	Entries: 4794	Entries: 2119
Mean: 11.7135 \pm 0.0168	Mean: 22.0500 \pm 0.0101	Mean: 11.5143 \pm 0.0066
Std Dev: 0.4443 \pm 0.0119	Std Dev: 0.6961 \pm 0.0071	Std Dev: 0.3022 \pm 0.0046



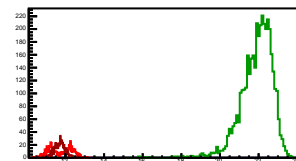
Cycle 11, Sums

Entries: 2099	Entries: 3995	Entries: 657
Mean: 11.5906 \pm 0.0100	Mean: 22.3328 \pm 0.0111	Mean: 11.5010 \pm 0.0127
Std Dev: 0.4593 \pm 0.0071	Std Dev: 0.6996 \pm 0.0078	Std Dev: 0.3246 \pm 0.0090



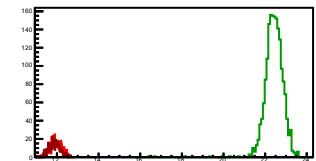
Cycle 12, Sums

Entries: 645	Entries: 3980	Entries: 674
Mean: 11.7328 \pm 0.0233	Mean: 21.8894 \pm 0.0132	Mean: 11.7070 \pm 0.0112
Std Dev: 0.5907 \pm 0.0164	Std Dev: 0.8338 \pm 0.0093	Std Dev: 0.2904 \pm 0.0079



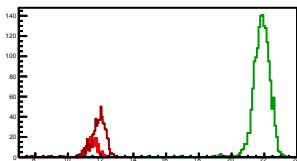
Cycle 13, Sums

Entries: 661	Entries: 1786	Entries: 552
Mean: 11.9712 \pm 0.0105	Mean: 22.4277 \pm 0.0055	Mean: 11.7363 \pm 0.0115
Std Dev: 0.2706 \pm 0.0074	Std Dev: 0.4524 \pm 0.0076	Std Dev: 0.2704 \pm 0.0081



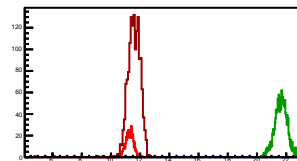
Cycle 14, Sums

Entries: 559	Entries: 1654	Entries: 632
Mean: 11.5176 \pm 0.0135	Mean: 21.8411 \pm 0.0132	Mean: 11.8313 \pm 0.0219
Std Dev: 0.3200 \pm 0.0096	Std Dev: 0.5358 \pm 0.0093	Std Dev: 0.5501 \pm 0.0155



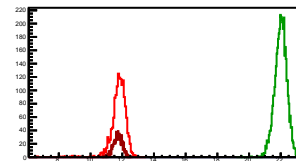
Cycle 15, Sums

Entries: 465	Entries: 1845	Entries: 1478
Mean: 10.7284 \pm 0.0052	Mean: 20.6404 \pm 0.0078	Mean: 11.5810 \pm 0.0119
Std Dev: 0.3048 \pm 0.0100	Std Dev: 0.4204 \pm 0.0069	Std Dev: 0.4556 \pm 0.0084



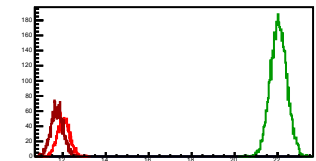
Cycle 16, Sums

Entries: 1493	Entries: 4254	Entries: 1059
Mean: 10.2381 \pm 0.0132	Mean: 21.4051 \pm 0.0127	Mean: 11.6321 \pm 0.0100
Std Dev: 0.4707 \pm 0.0086	Std Dev: 0.6714 \pm 0.0041	Std Dev: 0.2816 \pm 0.0061



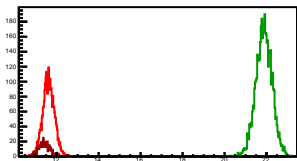
Cycle 17, Sums

Entries: 1417	Entries: 4827	Entries: 2121
Mean: 12.0395 \pm 0.0076	Mean: 22.0477 \pm 0.0055	Mean: 11.7363 \pm 0.0063
Std Dev: 0.2874 \pm 0.0054	Std Dev: 0.3840 \pm 0.0039	Std Dev: 0.2896 \pm 0.0044



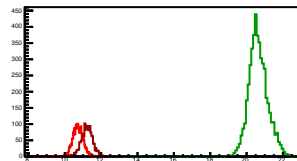
Cycle 18, Sums

Entries: 2721	Entries: 4747	Entries: 607
Mean: 11.6176 \pm 0.0053	Mean: 21.8753 \pm 0.0056	Mean: 11.4150 \pm 0.0108
Std Dev: 0.2762 \pm 0.0037	Std Dev: 0.3858 \pm 0.0040	Std Dev: 0.2665 \pm 0.0076



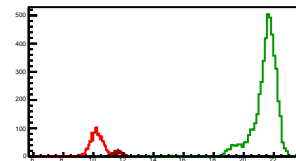
Cycle 19, Sums

Entries: 2832	Entries: 4746	Entries: 1482
Mean: 10.7284 \pm 0.0052	Mean: 20.6404 \pm 0.0078	Mean: 11.2028 \pm 0.0089
Std Dev: 0.2775 \pm 0.0037	Std Dev: 0.5389 \pm 0.0055	Std Dev: 0.3408 \pm 0.0063



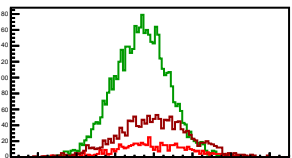
Cycle 20, Sums

Entries: 1492	Entries: 4755	Entries: 675
Mean: 10.2381 \pm 0.0132	Mean: 21.4051 \pm 0.0127	Mean: 11.6321 \pm 0.0100
Std Dev: 0.5091 \pm 0.0093	Std Dev: 0.6724 \pm 0.0069	Std Dev: 0.2810 \pm 0.0071



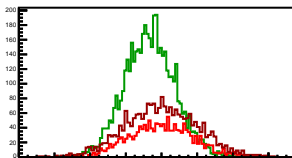
Cycle 1, Asyms

Entries: 597	Entries: 4815	Entries: 1543
Mean: -0.0002 +/- 0.0008	Mean: -0.0066 +/- 0.0002	Mean: 0.0003 +/- 0.0005
Std Dev: 0.0189 +/- 0.0005	Std Dev: 0.0141 +/- 0.0001	Std Dev: 0.0185 +/- 0.0003



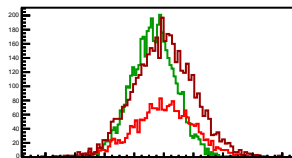
Cycle 2, Asyms

Entries: 1553	Entries: 4790	Entries: 2265
Mean: -0.0001 +/- 0.0005	Mean: -0.0067 +/- 0.0002	Mean: -0.0001 +/- 0.0004
Std Dev: 0.0179 +/- 0.0003	Std Dev: 0.0141 +/- 0.0001	Std Dev: 0.0202 +/- 0.0003



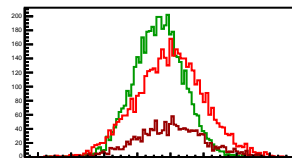
Cycle 3, Asyms

Entries: 2209	Entries: 4805	Entries: 4470
Mean: -0.0002 +/- 0.0004	Mean: -0.0069 +/- 0.0002	Mean: -0.0002 +/- 0.0003
Std Dev: 0.0204 +/- 0.0003	Std Dev: 0.0148 +/- 0.0002	Std Dev: 0.0205 +/- 0.0002



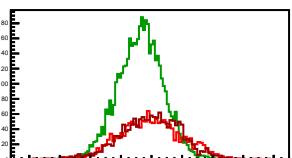
Cycle 4, Asyms

Entries: 4443	Entries: 4782	Entries: 1537
Mean: -0.0003 +/- 0.0003	Mean: -0.0070 +/- 0.0002	Mean: 0.0005 +/- 0.0005
Std Dev: 0.0205 +/- 0.0002	Std Dev: 0.0151 +/- 0.0002	Std Dev: 0.0201 +/- 0.0004



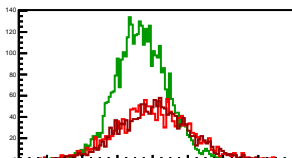
Cycle 5, Asyms

Entries: 1555	Entries: 4792	Entries: 1536
Mean: -0.0002 +/- 0.0005	Mean: -0.0071 +/- 0.0002	Mean: -0.0003 +/- 0.0005
Std Dev: 0.0206 +/- 0.0004	Std Dev: 0.0147 +/- 0.0001	Std Dev: 0.0198 +/- 0.0004



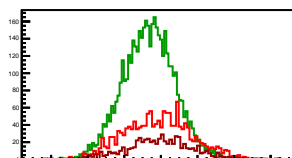
Cycle 6, Asyms

Entries: 1543	Entries: 3877	Entries: 1592
Mean: 0.0001 +/- 0.0005	Mean: -0.0065 +/- 0.0002	Mean: 0.0009 +/- 0.0005
Std Dev: 0.0203 +/- 0.0004	Std Dev: 0.0146 +/- 0.0002	Std Dev: 0.0193 +/- 0.0003



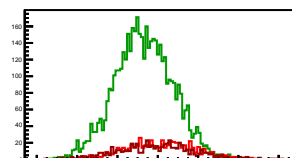
Cycle 7, Asyms

Entries: 1575	Entries: 4694	Entries: 663
Mean: -0.0015 +/- 0.0005	Mean: -0.0066 +/- 0.0002	Mean: -0.0005 +/- 0.0007
Std Dev: 0.0186 +/- 0.0003	Std Dev: 0.0142 +/- 0.0001	Std Dev: 0.0179 +/- 0.0005



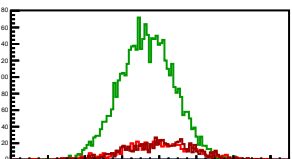
Cycle 8, Asyms

Entries: 646	Entries: 4827	Entries: 618
Mean: 0.0009 +/- 0.0007	Mean: -0.0069 +/- 0.0002	Mean: -0.0003 +/- 0.0007
Std Dev: 0.0185 +/- 0.0005	Std Dev: 0.0144 +/- 0.0001	Std Dev: 0.0184 +/- 0.0005



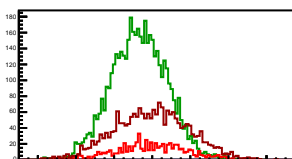
Cycle 9, Asyms

Entries: 617	Entries: 4729	Entries: 740
Mean: -0.0008 +/- 0.0008	Mean: -0.0065 +/- 0.0002	Mean: 0.0001 +/- 0.0007
Std Dev: 0.0201 +/- 0.0006	Std Dev: 0.0147 +/- 0.0002	Std Dev: 0.0178 +/- 0.0005



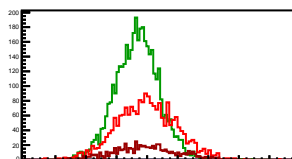
Cycle 10, Asyms

Entries: 700	Entries: 4924	Entries: 2119
Mean: -0.0010 +/- 0.0007	Mean: -0.0069 +/- 0.0002	Mean: -0.0002 +/- 0.0004
Std Dev: 0.0190 +/- 0.0005	Std Dev: 0.0146 +/- 0.0001	Std Dev: 0.0196 +/- 0.0003



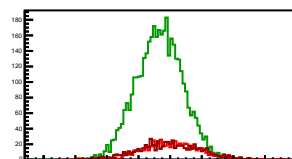
Cycle 11, Asyms

Entries: 2099	Entries: 3995	Entries: 657
Mean: -0.0005 +/- 0.0004	Mean: -0.0065 +/- 0.0002	Mean: -0.0008 +/- 0.0008
Std Dev: 0.0195 +/- 0.0003	Std Dev: 0.0143 +/- 0.0002	Std Dev: 0.0204 +/- 0.0006



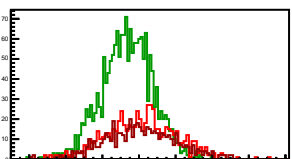
Cycle 12, Asyms

Entries: 645	Entries: 3980	Entries: 674
Mean: 0.0010 +/- 0.0007	Mean: -0.0068 +/- 0.0002	Mean: -0.0007 +/- 0.0008
Std Dev: 0.0188 +/- 0.0005	Std Dev: 0.0148 +/- 0.0002	Std Dev: 0.0201 +/- 0.0005



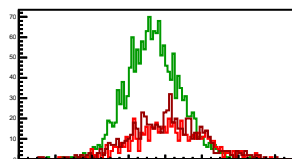
Cycle 13, Asyms

Entries: 661	Entries: 1786	Entries: 552
Mean: -0.0003 +/- 0.0005	Mean: -0.0066 +/- 0.0003	Mean: 0.0003 +/- 0.0008
Std Dev: 0.0192 +/- 0.0005	Std Dev: 0.0139 +/- 0.0002	Std Dev: 0.0191 +/- 0.0006



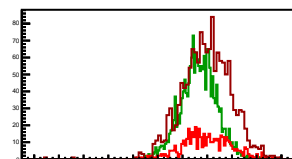
Cycle 14, Asyms

Entries: 559	Entries: 1654	Entries: 632
Mean: -0.0018 +/- 0.0008	Mean: -0.0067 +/- 0.0004	Mean: -0.0001 +/- 0.0008
Std Dev: 0.0192 +/- 0.0006	Std Dev: 0.0144 +/- 0.0003	Std Dev: 0.0198 +/- 0.0006



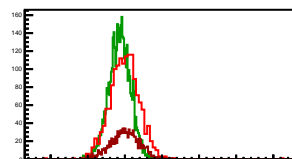
Cycle 15, Asyms

Entries: 465	Entries: 1845	Entries: 1478
Mean: -0.0005 +/- 0.0004	Mean: -0.0068 +/- 0.0003	Mean: -0.0005 +/- 0.0005
Std Dev: 0.0194 +/- 0.0006	Std Dev: 0.0142 +/- 0.0002	Std Dev: 0.0195 +/- 0.0004



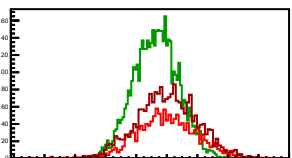
Cycle 16, Asyms

Entries: 1493	Entries: 4254	Entries: 1059
Mean: -0.0009 +/- 0.0005	Mean: -0.0070 +/- 0.0002	Mean: 0.0006 +/- 0.0006
Std Dev: 0.0201 +/- 0.0004	Std Dev: 0.0145 +/- 0.0002	Std Dev: 0.0191 +/- 0.0004



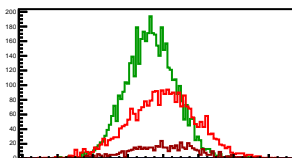
Cycle 17, Asyms

Entries: 1417	Entries: 4827	Entries: 2121
Mean: -0.0003 +/- 0.0005	Mean: -0.0070 +/- 0.0002	Mean: 0.0003 +/- 0.0004
Std Dev: 0.0194 +/- 0.0004	Std Dev: 0.0147 +/- 0.0001	Std Dev: 0.0195 +/- 0.0003



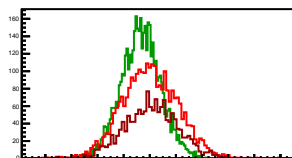
Cycle 18, Asyms

Entries: 2721	Entries: 4747	Entries: 607
Mean: -0.0001 +/- 0.0004	Mean: -0.0071 +/- 0.0002	Mean: -0.0001 +/- 0.0008
Std Dev: 0.0196 +/- 0.0003	Std Dev: 0.0142 +/- 0.0001	Std Dev: 0.0198 +/- 0.0006



Cycle 19, Asyms

Entries: 2832	Entries: 4746	Entries: 1482
Mean: 0.0002 +/- 0.0004	Mean: -0.0068 +/- 0.0002	Mean: 0.0011 +/- 0.0005
Std Dev: 0.0212 +/- 0.0003	Std Dev: 0.0150 +/- 0.0002	Std Dev: 0.0204 +/- 0.0004



Cycle 20, Asyms

Entries: 1492	Entries: 4755	Entries: 675
Mean: -0.0009 +/- 0.0006	Mean: -0.0069 +/- 0.0002	Mean: 0.0007 +/- 0.0007
Std Dev: 0.0220 +/- 0.0004	Std Dev: 0.0150 +/- 0.0002	Std Dev: 0.0191 +/- 0.0005

