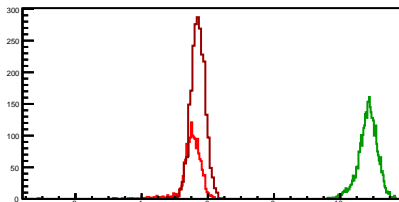


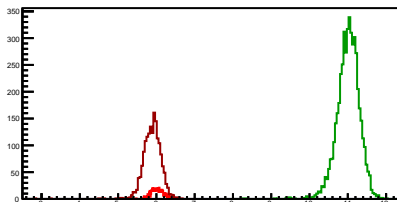
Cycle 1, PosHel

Entries: 1614	Entries: 3826	Entries: 2360
Mean: 5.5108 +/- 0.0078	Mean: 10.8351 +/- 0.0047	Mean: 5.6991 +/- 0.0051
Std Dev: 0.3145 +/- 0.0055	Std Dev: 0.2907 +/- 0.0033	Std Dev: 0.2467 +/- 0.0036



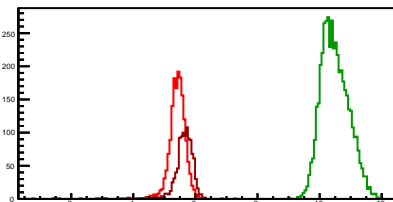
Cycle 2, PosHel

Entries: 567	Entries: 4827	Entries: 1697
Mean: 6.0221 +/- 0.0069	Mean: 11.0085 +/- 0.0042	Mean: 5.8862 +/- 0.0059
Std Dev: 0.1651 +/- 0.0049	Std Dev: 0.2948 +/- 0.0030	Std Dev: 0.2441 +/- 0.0042



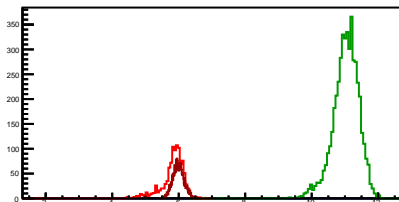
Cycle 3, PosHel

Entries: 1670	Entries: 4733	Entries: 1061
Mean: 5.4100 +/- 0.0076	Mean: 10.4889 +/- 0.0065	Mean: 5.6361 +/- 0.0105
Std Dev: 0.3096 +/- 0.0054	Std Dev: 0.4485 +/- 0.0046	Std Dev: 0.3419 +/- 0.0074



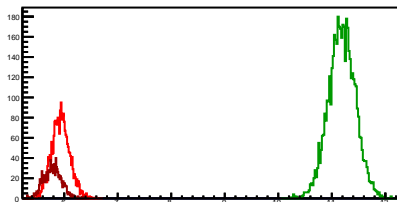
Cycle 4, PosHel

Entries: 1053	Entries: 4699	Entries: 2354
Mean: 5.8180 +/- 0.0112	Mean: 11.0234 +/- 0.0058	Mean: 5.9893 +/- 0.0035
Std Dev: 0.3634 +/- 0.0079	Std Dev: 0.4008 +/- 0.0041	Std Dev: 0.1702 +/- 0.0025



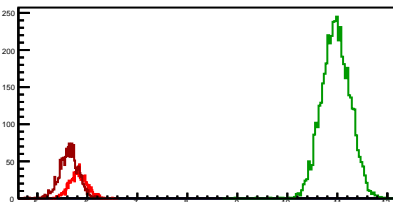
Cycle 5, PosHel

Entries: 2293	Entries: 4747	Entries: 1035
Mean: 5.9337 +/- 0.0036	Mean: 11.1876 +/- 0.0037	Mean: 5.7835 +/- 0.0051
Std Dev: 0.1710 +/- 0.0025	Std Dev: 0.2527 +/- 0.0026	Std Dev: 0.1644 +/- 0.0036



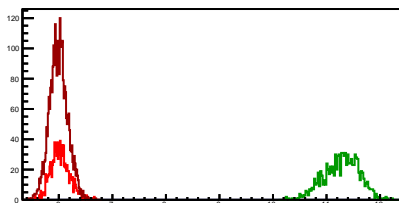
Cycle 6, PosHel

Entries: 1041	Entries: 4721	Entries: 1650
Mean: 5.8149 +/- 0.0054	Mean: 10.9702 +/- 0.0041	Mean: 5.6352 +/- 0.0046
Std Dev: 0.1737 +/- 0.0038	Std Dev: 0.2843 +/- 0.0029	Std Dev: 0.1886 +/- 0.0033



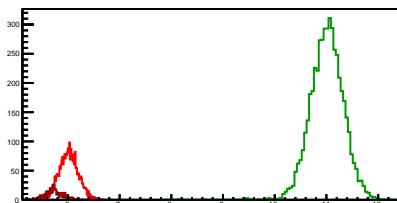
Cycle 7, PosHel

Entries: 1072	Entries: 1004	Entries: 2878
Mean: 6.0239 +/- 0.0054	Mean: 11.2825 +/- 0.0103	Mean: 5.9956 +/- 0.0032
Std Dev: 0.1757 +/- 0.0038	Std Dev: 0.3270 +/- 0.0073	Std Dev: 0.1710 +/- 0.0023



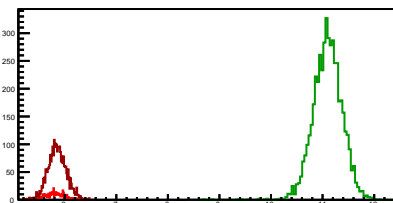
Cycle 8, PosHel

Entries: 2770	Entries: 4830	Entries: 505
Mean: 6.0168 +/- 0.0035	Mean: 11.0083 +/- 0.0046	Mean: 5.7238 +/- 0.0074
Std Dev: 0.1822 +/- 0.0024	Std Dev: 0.3186 +/- 0.0032	Std Dev: 0.1658 +/- 0.0052



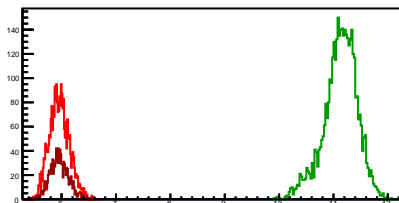
Cycle 9, PosHel

Entries: 479	Entries: 4805	Entries: 2774
Mean: 5.8194 +/- 0.0084	Mean: 11.0966 +/- 0.0041	Mean: 5.8519 +/- 0.0034
Std Dev: 0.1830 +/- 0.0059	Std Dev: 0.2825 +/- 0.0029	Std Dev: 0.1796 +/- 0.0024



Cycle 10, PosHel

Entries: 2660	Entries: 4011	Entries: 1055
Mean: 5.9572 +/- 0.0036	Mean: 11.1270 +/- 0.0049	Mean: 5.9556 +/- 0.0052
Std Dev: 0.1837 +/- 0.0025	Std Dev: 0.3107 +/- 0.0035	Std Dev: 0.1704 +/- 0.0037



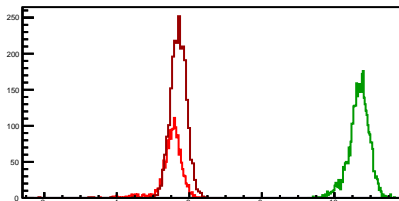
Cycle 11, PosHel

Entries: 1058	Entries: 4692	Entries: 576
Mean: 6.0059 +/- 0.0057	Mean: 11.1143 +/- 0.0038	Mean: 5.9098 +/- 0.0070
Std Dev: 0.1843 +/- 0.0040	Std Dev: 0.2574 +/- 0.0027	Std Dev: 0.1681 +/- 0.0050



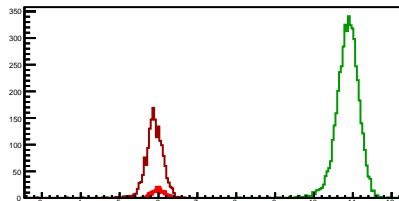
Cycle 1, NegHel

Entries: 1614	Entries: 3826	Entries: 2360
Mean: 5.5124 +/- 0.0077	Mean: 10.6803 +/- 0.0046	Mean: 5.6984 +/- 0.0050
Std Dev: 0.3098 +/- 0.0055	Std Dev: 0.2835 +/- 0.0032	Std Dev: 0.2445 +/- 0.0036



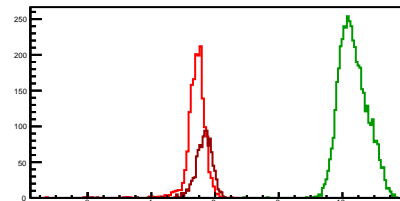
Cycle 2, NegHel

Entries: 567	Entries: 4827	Entries: 1697
Mean: 6.0082 +/- 0.0072	Mean: 10.8624 +/- 0.0042	Mean: 5.8891 +/- 0.0059
Std Dev: 0.1705 +/- 0.0051	Std Dev: 0.2946 +/- 0.0030	Std Dev: 0.2445 +/- 0.0042



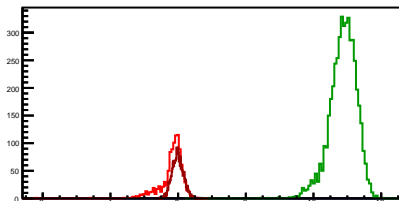
Cycle 3, NegHel

Entries: 1670	Entries: 4733	Entries: 1061
Mean: 5.4182 +/- 0.0076	Mean: 10.3391 +/- 0.0064	Mean: 5.6330 +/- 0.0106
Std Dev: 0.3114 +/- 0.0054	Std Dev: 0.4407 +/- 0.0045	Std Dev: 0.3437 +/- 0.0075



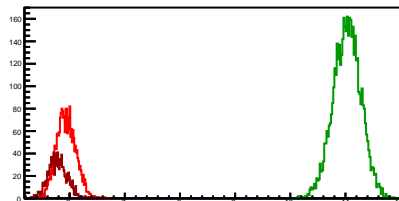
Cycle 4, NegHel

Entries: 1053	Entries: 4699	Entries: 2354
Mean: 5.8115 +/- 0.0110	Mean: 10.8704 +/- 0.0059	Mean: 5.9873 +/- 0.0035
Std Dev: 0.3580 +/- 0.0078	Std Dev: 0.4057 +/- 0.0042	Std Dev: 0.1698 +/- 0.0025



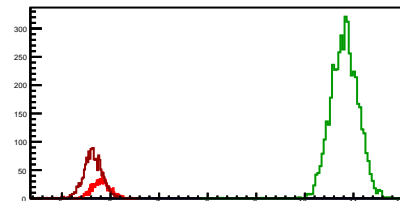
Cycle 5, NegHel

Entries: 2293	Entries: 4747	Entries: 1035
Mean: 5.9378 +/- 0.0036	Mean: 11.0275 +/- 0.0036	Mean: 5.7849 +/- 0.0053
Std Dev: 0.1741 +/- 0.0026	Std Dev: 0.2505 +/- 0.0026	Std Dev: 0.1705 +/- 0.0037



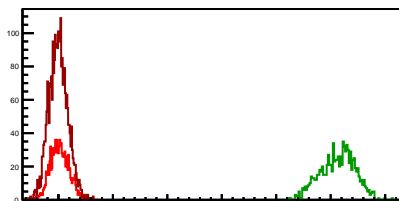
Cycle 6, NegHel

Entries: 1041	Entries: 4721	Entries: 1650
Mean: 5.8097 +/- 0.0055	Mean: 10.8171 +/- 0.0041	Mean: 5.6364 +/- 0.0048
Std Dev: 0.1778 +/- 0.0039	Std Dev: 0.2823 +/- 0.0029	Std Dev: 0.1943 +/- 0.0034



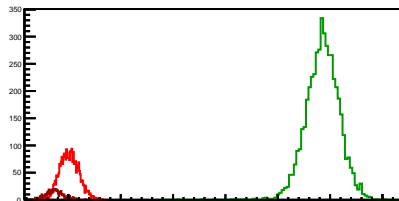
Cycle 7, NegHel

Entries: 1072	Entries: 1004	Entries: 2878
Mean: 6.0245 +/- 0.0053	Mean: 11.1303 +/- 0.0099	Mean: 5.9976 +/- 0.0032
Std Dev: 0.1726 +/- 0.0037	Std Dev: 0.3139 +/- 0.0070	Std Dev: 0.1725 +/- 0.0023



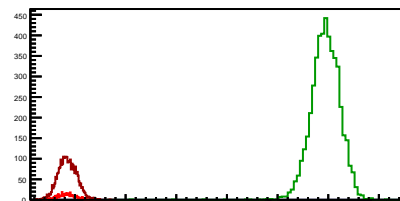
Cycle 8, NegHel

Entries: 2770	Entries: 4830	Entries: 505
Mean: 6.0198 +/- 0.0035	Mean: 10.8540 +/- 0.0046	Mean: 5.7413 +/- 0.0075
Std Dev: 0.1834 +/- 0.0025	Std Dev: 0.3210 +/- 0.0033	Std Dev: 0.1695 +/- 0.0053



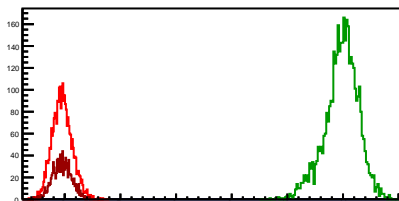
Cycle 9, NegHel

Entries: 479	Entries: 4805	Entries: 2774
Mean: 5.8312 +/- 0.0079	Mean: 10.9425 +/- 0.0042	Mean: 5.8520 +/- 0.0035
Std Dev: 0.1739 +/- 0.0056	Std Dev: 0.2896 +/- 0.0030	Std Dev: 0.1834 +/- 0.0025



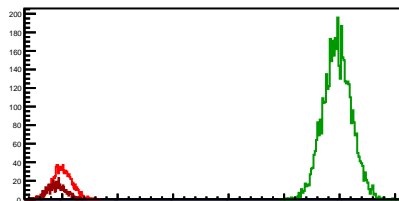
Cycle 10, NegHel

Entries: 2660	Entries: 4011	Entries: 1055
Mean: 5.9528 +/- 0.0035	Mean: 10.9737 +/- 0.0048	Mean: 5.9542 +/- 0.0053
Std Dev: 0.1803 +/- 0.0025	Std Dev: 0.3012 +/- 0.0034	Std Dev: 0.1712 +/- 0.0037



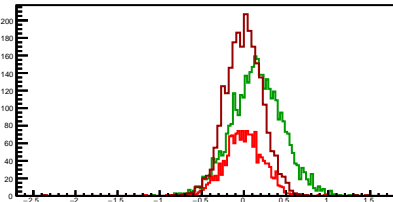
Cycle 11, NegHel

Entries: 1058	Entries: 4692	Entries: 576
Mean: 6.0029 +/- 0.0054	Mean: 10.9578 +/- 0.0037	Mean: 5.9027 +/- 0.0070
Std Dev: 0.1762 +/- 0.0038	Std Dev: 0.2543 +/- 0.0026	Std Dev: 0.1671 +/- 0.0049



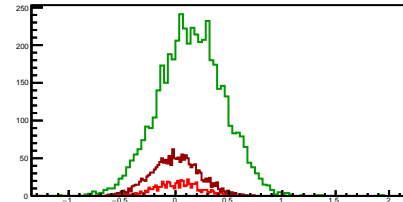
Cycle 1, Diffs

Entries: 1614	Entries: 3826	Entries: 2360
Mean: -0.0016 +/- 0.0057	Mean: 0.1548 +/- 0.0049	Mean: 0.0006 +/- 0.0047
Std Dev: 0.2301 +/- 0.0040	Std Dev: 0.3048 +/- 0.0035	Std Dev: 0.2263 +/- 0.0033



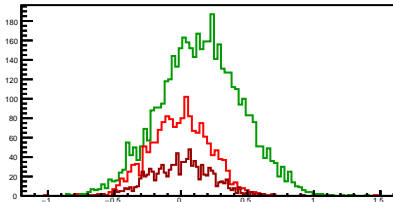
Cycle 2, Diffs

Entries: 567	Entries: 4827	Entries: 1697
Mean: 0.0139 +/- 0.0090	Mean: 0.1460 +/- 0.0044	Mean: -0.0030 +/- 0.0054
Std Dev: 0.2138 +/- 0.0063	Std Dev: 0.3056 +/- 0.0031	Std Dev: 0.2231 +/- 0.0038



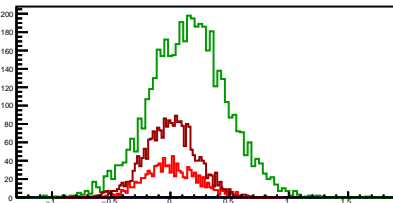
Cycle 3, Diffs

Entries: 1670	Entries: 4733	Entries: 1061
Mean: -0.0082 +/- 0.0055	Mean: 0.1498 +/- 0.0045	Mean: 0.0031 +/- 0.0069
Std Dev: 0.2255 +/- 0.0039	Std Dev: 0.3080 +/- 0.0032	Std Dev: 0.2248 +/- 0.0049



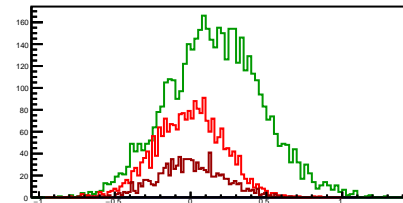
Cycle 4, Diffs

Entries: 1053	Entries: 4699	Entries: 2354
Mean: 0.0065 +/- 0.0070	Mean: 0.1530 +/- 0.0047	Mean: 0.0020 +/- 0.0045
Std Dev: 0.2271 +/- 0.0049	Std Dev: 0.3224 +/- 0.0033	Std Dev: 0.2175 +/- 0.0032



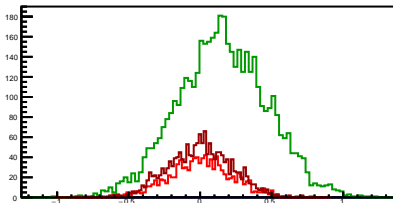
Cycle 5, Diffs

Entries: 2293	Entries: 4747	Entries: 1035
Mean: -0.0042 +/- 0.0047	Mean: 0.1600 +/- 0.0045	Mean: -0.0014 +/- 0.0067
Std Dev: 0.2236 +/- 0.0033	Std Dev: 0.3107 +/- 0.0032	Std Dev: 0.2169 +/- 0.0048



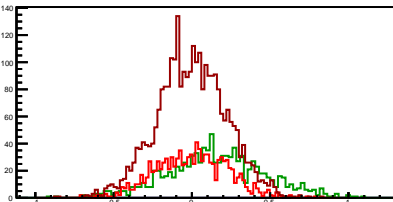
Cycle 6, Diffs

Entries: 1041	Entries: 4721	Entries: 1650
Mean: 0.0052 +/- 0.0070	Mean: 0.1531 +/- 0.0046	Mean: -0.0012 +/- 0.0054
Std Dev: 0.2252 +/- 0.0049	Std Dev: 0.3133 +/- 0.0032	Std Dev: 0.2205 +/- 0.0038



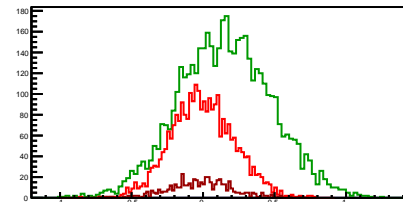
Cycle 7, Diffs

Entries: 1072	Entries: 1004	Entries: 2878
Mean: -0.0005 +/- 0.0070	Mean: 0.1522 +/- 0.0099	Mean: -0.0020 +/- 0.0041
Std Dev: 0.2300 +/- 0.0050	Std Dev: 0.3147 +/- 0.0070	Std Dev: 0.2222 +/- 0.0029



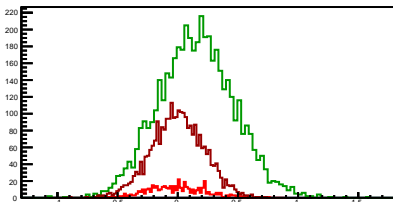
Cycle 8, Diffs

Entries: 2770	Entries: 4830	Entries: 505
Mean: -0.0030 +/- 0.0042	Mean: 0.1543 +/- 0.0047	Mean: -0.0174 +/- 0.0098
Std Dev: 0.2216 +/- 0.0030	Std Dev: 0.3247 +/- 0.0033	Std Dev: 0.2202 +/- 0.0069



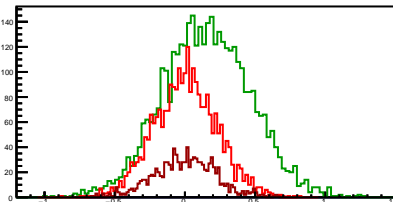
Cycle 9, Diffs

Entries: 479	Entries: 4805	Entries: 2774
Mean: -0.0118 +/- 0.0107	Mean: 0.1541 +/- 0.0045	Mean: -0.0001 +/- 0.0042
Std Dev: 0.2348 +/- 0.0076	Std Dev: 0.3120 +/- 0.0032	Std Dev: 0.2195 +/- 0.0029



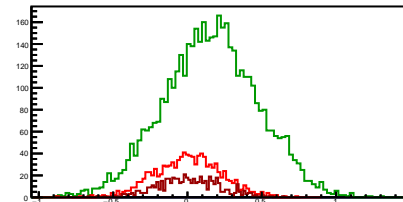
Cycle 10, Diffs

Entries: 2660	Entries: 4011	Entries: 1055
Mean: 0.0044 +/- 0.0044	Mean: 0.1533 +/- 0.0049	Mean: 0.0015 +/- 0.0067
Std Dev: 0.2259 +/- 0.0031	Std Dev: 0.3133 +/- 0.0035	Std Dev: 0.2191 +/- 0.0048



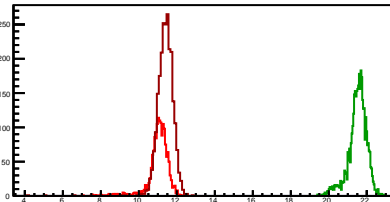
Cycle 11, Diffs

Entries: 1058	Entries: 4692	Entries: 576
Mean: 0.0030 +/- 0.0068	Mean: 0.1565 +/- 0.0046	Mean: 0.0071 +/- 0.0088
Std Dev: 0.2226 +/- 0.0048	Std Dev: 0.3178 +/- 0.0033	Std Dev: 0.2104 +/- 0.0062



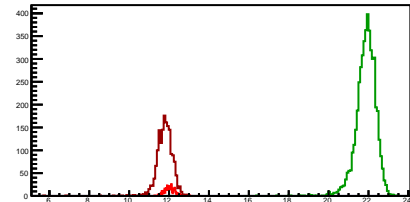
Cycle 1, Sums

Entries: 1614	Entries: 3826	Entries: 2360
Mean: 11.0232 +/- 0.0144	Mean: 21.5154 +/- 0.0079	Mean: 11.3975 +/- 0.0090
Std Dev: 0.5805 +/- 0.0102	Std Dev: 0.4866 +/- 0.0056	Std Dev: 0.4360 +/- 0.0063



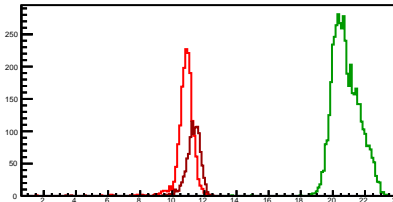
Cycle 2, Sums

Entries: 567	Entries: 4827	Entries: 1697
Mean: 12.0302 +/- 0.0109	Mean: 21.8709 +/- 0.0073	Mean: 11.7753 +/- 0.0106
Std Dev: 0.2588 +/- 0.0077	Std Dev: 0.5039 +/- 0.0051	Std Dev: 0.4347 +/- 0.0075



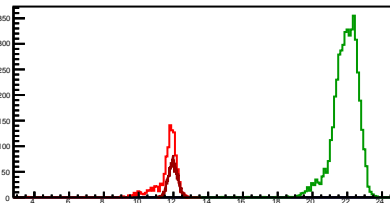
Cycle 3, Sums

Entries: 1670	Entries: 4733	Entries: 1061
Mean: 10.8282 +/- 0.0142	Mean: 20.8280 +/- 0.0121	Mean: 11.2691 +/- 0.0199
Std Dev: 0.5786 +/- 0.0100	Std Dev: 0.8342 +/- 0.0086	Std Dev: 0.6477 +/- 0.0141



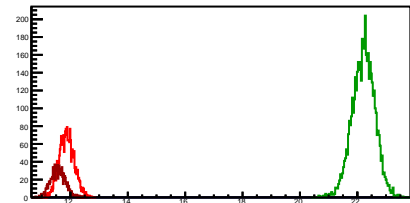
Cycle 4, Sums

Entries: 1053	Entries: 4699	Entries: 2354
Mean: 11.6295 +/- 0.0211	Mean: 21.8938 +/- 0.0108	Mean: 11.9766 +/- 0.0054
Std Dev: 0.6848 +/- 0.0149	Std Dev: 0.7393 +/- 0.0076	Std Dev: 0.2613 +/- 0.0038



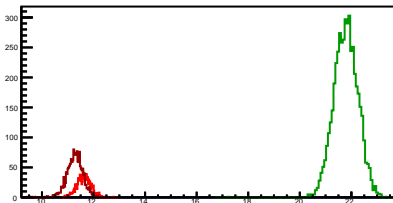
Cycle 5, Sums

Entries: 2293	Entries: 4747	Entries: 1035
Mean: 11.8715 +/- 0.0055	Mean: 22.2151 +/- 0.0057	Mean: 11.5685 +/- 0.0079
Std Dev: 0.2629 +/- 0.0039	Std Dev: 0.3959 +/- 0.0041	Std Dev: 0.2553 +/- 0.0056



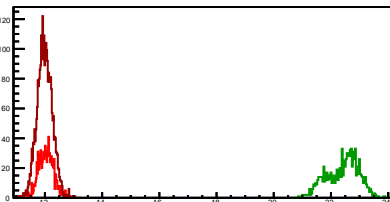
Cycle 6, Sums

Entries: 1041	Entries: 4721	Entries: 1650
Mean: 11.6246 +/- 0.0084	Mean: 21.7873 +/- 0.0069	Mean: 11.2716 +/- 0.0077
Std Dev: 0.2699 +/- 0.0059	Std Dev: 0.4722 +/- 0.0049	Std Dev: 0.3131 +/- 0.0054



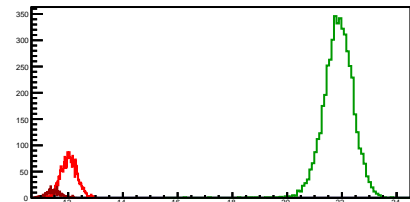
Cycle 7, Sums

Entries: 1072	Entries: 1004	Entries: 2878
Mean: 12.0484 +/- 0.0080	Mean: 22.4128 +/- 0.0176	Mean: 11.9932 +/- 0.0049
Std Dev: 0.2616 +/- 0.0056	Std Dev: 0.5585 +/- 0.0125	Std Dev: 0.2620 +/- 0.0035



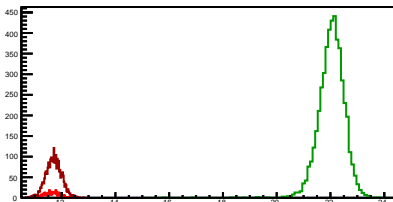
Cycle 8, Sums

Entries: 2770	Entries: 4830	Entries: 505
Mean: 12.0366 +/- 0.0055	Mean: 21.8623 +/- 0.0079	Mean: 11.4651 +/- 0.0113
Std Dev: 0.2908 +/- 0.0039	Std Dev: 0.5510 +/- 0.0056	Std Dev: 0.2529 +/- 0.0080



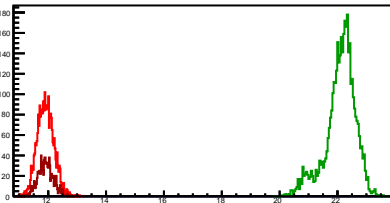
Cycle 9, Sums

Entries: 479	Entries: 4805	Entries: 2774
Mean: 11.6506 +/- 0.0123	Mean: 22.0391 +/- 0.0069	Mean: 11.7039 +/- 0.0055
Std Dev: 0.2689 +/- 0.0087	Std Dev: 0.4796 +/- 0.0049	Std Dev: 0.2893 +/- 0.0039



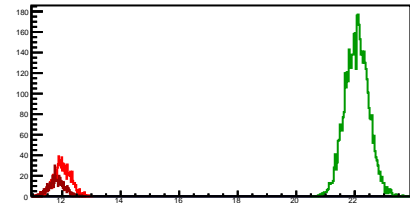
Cycle 10, Sums

Entries: 2660	Entries: 4011	Entries: 1055
Mean: 11.9100 +/- 0.0055	Mean: 22.1007 +/- 0.0083	Mean: 11.9098 +/- 0.0081
Std Dev: 0.2854 +/- 0.0039	Std Dev: 0.5256 +/- 0.0059	Std Dev: 0.2620 +/- 0.0057



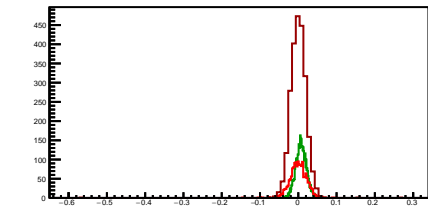
Cycle 11, Sums

Entries: 1058	Entries: 4692	Entries: 576
Mean: 12.0087 +/- 0.0087	Mean: 22.0721 +/- 0.0059	Mean: 11.8126 +/- 0.0109
Std Dev: 0.2838 +/- 0.0062	Std Dev: 0.4012 +/- 0.0041	Std Dev: 0.2609 +/- 0.0077



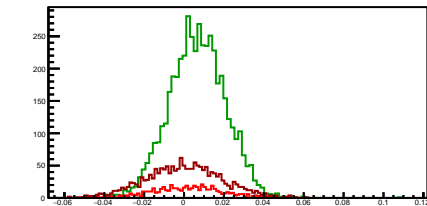
Cycle 1, Asyms

Entries: 1614	Entries: 3826	Entries: 2360
Mean: -0.0002 +/- 0.0005	Mean: 0.0072 +/- 0.0002	Mean: -0.0000 +/- 0.0005
Std Dev: 0.0214 +/- 0.0004	Std Dev: 0.0142 +/- 0.0002	Std Dev: 0.0232 +/- 0.0003



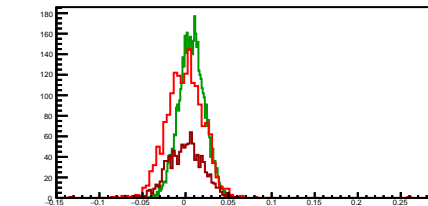
Cycle 2, Asyms

Entries: 567	Entries: 4827	Entries: 1697
Mean: 0.0012 +/- 0.0007	Mean: 0.0067 +/- 0.0002	Mean: -0.0003 +/- 0.0005
Std Dev: 0.0177 +/- 0.0005	Std Dev: 0.0140 +/- 0.0001	Std Dev: 0.0190 +/- 0.0003



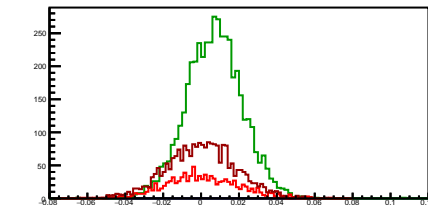
Cycle 3, Asyms

Entries: 1670	Entries: 4733	Entries: 1061
Mean: -0.0007 +/- 0.0005	Mean: 0.0072 +/- 0.0002	Mean: 0.0002 +/- 0.0006
Std Dev: 0.0217 +/- 0.0004	Std Dev: 0.0148 +/- 0.0002	Std Dev: 0.0207 +/- 0.0004



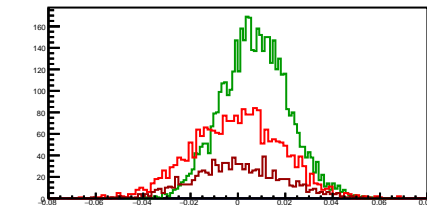
Cycle 4, Asyms

Entries: 1053	Entries: 4699	Entries: 2354
Mean: 0.0005 +/- 0.0006	Mean: 0.0070 +/- 0.0002	Mean: 0.0002 +/- 0.0004
Std Dev: 0.0196 +/- 0.0004	Std Dev: 0.0148 +/- 0.0002	Std Dev: 0.0181 +/- 0.0003



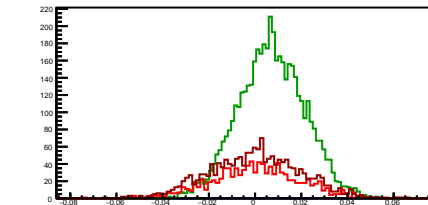
Cycle 5, Asyms

Entries: 2293	Entries: 4747	Entries: 1035
Mean: -0.0003 +/- 0.0004	Mean: 0.0072 +/- 0.0002	Mean: -0.0001 +/- 0.0006
Std Dev: 0.0188 +/- 0.0003	Std Dev: 0.0140 +/- 0.0001	Std Dev: 0.0187 +/- 0.0004



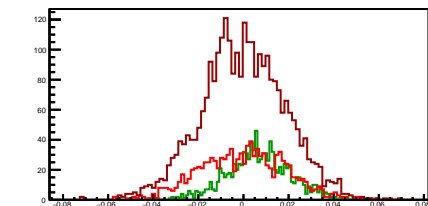
Cycle 6, Asyms

Entries: 1041	Entries: 4721	Entries: 1650
Mean: 0.0005 +/- 0.0006	Mean: 0.0070 +/- 0.0002	Mean: -0.0001 +/- 0.0005
Std Dev: 0.0193 +/- 0.0004	Std Dev: 0.0144 +/- 0.0001	Std Dev: 0.0195 +/- 0.0003



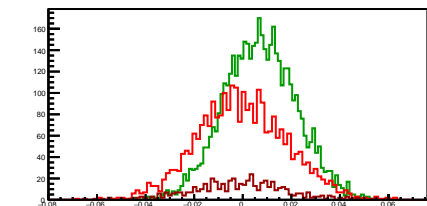
Cycle 7, Asyms

Entries: 1072	Entries: 1004	Entries: 2878
Mean: -0.0000 +/- 0.0006	Mean: 0.0068 +/- 0.0004	Mean: -0.0002 +/- 0.0003
Std Dev: 0.0190 +/- 0.0004	Std Dev: 0.0141 +/- 0.0003	Std Dev: 0.0185 +/- 0.0002



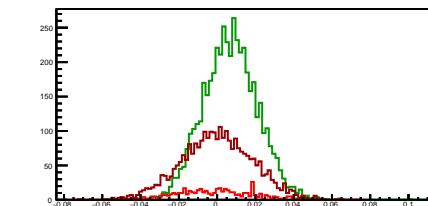
Cycle 8, Asyms

Entries: 2770	Entries: 4830	Entries: 505
Mean: -0.0002 +/- 0.0003	Mean: 0.0071 +/- 0.0002	Mean: -0.0015 +/- 0.0009
Std Dev: 0.0184 +/- 0.0002	Std Dev: 0.0149 +/- 0.0002	Std Dev: 0.0192 +/- 0.0006



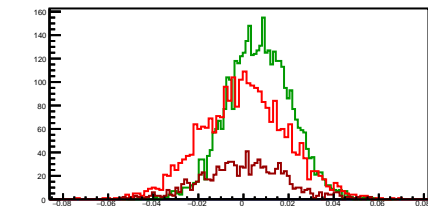
Cycle 9, Asyms

Entries: 479	Entries: 4805	Entries: 2774
Mean: -0.0010 +/- 0.0009	Mean: 0.0070 +/- 0.0002	Mean: 0.0000 +/- 0.0004
Std Dev: 0.0201 +/- 0.0007	Std Dev: 0.0142 +/- 0.0001	Std Dev: 0.0187 +/- 0.0003



Cycle 10, Asyms

Entries: 2660	Entries: 4011	Entries: 1055
Mean: 0.0004 +/- 0.0004	Mean: 0.0069 +/- 0.0002	Mean: 0.0001 +/- 0.0006
Std Dev: 0.0189 +/- 0.0003	Std Dev: 0.0142 +/- 0.0002	Std Dev: 0.0184 +/- 0.0004



Cycle 11, Asyms

Entries: 1058	Entries: 4692	Entries: 576
Mean: 0.0002 +/- 0.0006	Mean: 0.0071 +/- 0.0002	Mean: 0.0006 +/- 0.0007
Std Dev: 0.0185 +/- 0.0004	Std Dev: 0.0144 +/- 0.0001	Std Dev: 0.0178 +/- 0.0005

