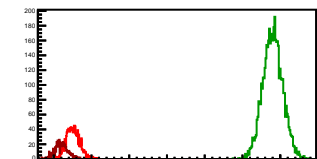
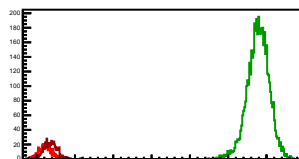


**Cycle 1, PosHel**

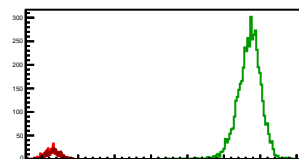
Entries: 1373	Entries: 4794	Entries: 647
Mean: 7.5081 +/- 0.0048	Mean: 12.8035 +/- 0.0038	Mean: 7.2021 +/- 0.0069
Std Dev: 0.1784 +/- 0.0034	Std Dev: 0.2642 +/- 0.0027	Std Dev: 0.1745 +/- 0.0049

**Cycle 2, PosHel**

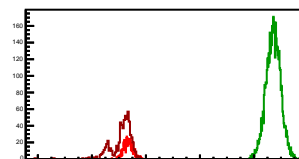
Entries: 644	Entries: 4799	Entries: 645
Mean: 7.2260 +/- 0.0066	Mean: 12.7823 +/- 0.0041	Mean: 7.3652 +/- 0.0069
Std Dev: 0.1673 +/- 0.0047	Std Dev: 0.2845 +/- 0.0029	Std Dev: 0.1745 +/- 0.0049

**Cycle 3, PosHel**

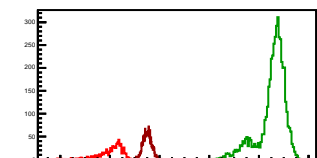
Entries: 645	Entries: 4800	Entries: 660
Mean: 7.2748 +/- 0.0074	Mean: 12.6987 +/- 0.0046	Mean: 7.3340 +/- 0.0068
Std Dev: 0.1869 +/- 0.0052	Std Dev: 0.3213 +/- 0.0033	Std Dev: 0.1752 +/- 0.0048

**Cycle 4, PosHel**

Entries: 659	Entries: 4834	Entries: 668
Mean: 7.3390 +/- 0.0066	Mean: 12.7164 +/- 0.0039	Mean: 7.0957 +/- 0.0153
Std Dev: 0.1684 +/- 0.0046	Std Dev: 0.2695 +/- 0.0027	Std Dev: 0.3947 +/- 0.0108

**Cycle 5, PosHel**

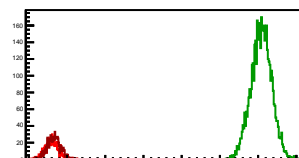
Entries: 667	Entries: 4759	Entries: 2034
Mean: 6.0330 +/- 0.0195	Mean: 12.5365 +/- 0.0081	Mean: 7.5092 +/- 0.0038
Std Dev: 0.5041 +/- 0.0138	Std Dev: 0.3568 +/- 0.0057	Std Dev: 0.1736 +/- 0.0027

**Cycle 6, PosHel**

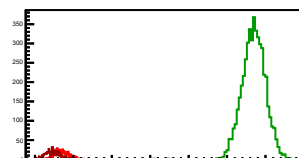
Entries: 2011	Entries: 3616	Entries: 76
Mean: 7.4503 +/- 0.0041	Mean: 13.0451 +/- 0.0046	Mean: 7.4880 +/- 0.0169
Std Dev: 0.1830 +/- 0.0029	Std Dev: 0.2746 +/- 0.0032	Std Dev: 0.1476 +/- 0.0120

**Cycle 7, PosHel**

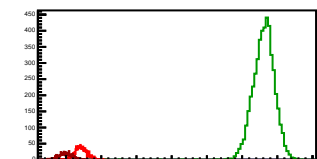
Entries: 650	Entries: 4774	Entries: 840
Mean: 7.5024 +/- 0.0070	Mean: 13.0819 +/- 0.0039	Mean: 7.6567 +/- 0.0061
Std Dev: 0.1791 +/- 0.0050	Std Dev: 0.2678 +/- 0.0027	Std Dev: 0.1769 +/- 0.0043

**Cycle 8, PosHel**

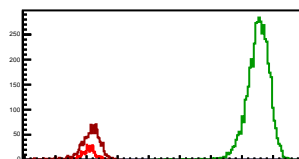
Entries: 789	Entries: 4836	Entries: 724
Mean: 7.6930 +/- 0.0063	Mean: 12.6891 +/- 0.0046	Mean: 7.4540 +/- 0.0068
Std Dev: 0.1773 +/- 0.0045	Std Dev: 0.3209 +/- 0.0033	Std Dev: 0.1823 +/- 0.0048

**Cycle 9, PosHel**

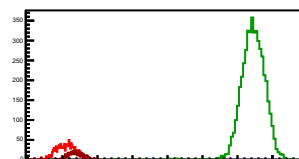
Entries: 1190	Entries: 4751	Entries: 677
Mean: 7.4222 +/- 0.0052	Mean: 12.6115 +/- 0.0046	Mean: 6.9855 +/- 0.0077
Std Dev: 0.1810 +/- 0.0037	Std Dev: 0.3168 +/- 0.0032	Std Dev: 0.1991 +/- 0.0054

**Cycle 10, PosHel**

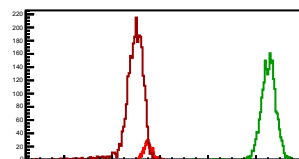
Entries: 670	Entries: 4736	Entries: 1333
Mean: 7.0725 +/- 0.0079	Mean: 12.5149 +/- 0.0054	Mean: 7.1078 +/- 0.0100
Std Dev: 0.2042 +/- 0.0050	Std Dev: 0.3746 +/- 0.0038	Std Dev: 0.3635 +/- 0.0070

**Cycle 11, PosHel**

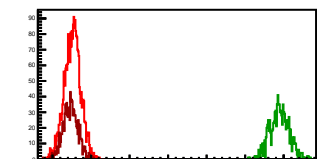
Entries: 1283	Entries: 4763	Entries: 700
Mean: 7.2688 +/- 0.0076	Mean: 12.4432 +/- 0.0050	Mean: 7.3785 +/- 0.0084
Std Dev: 0.2717 +/- 0.0054	Std Dev: 0.3480 +/- 0.0036	Std Dev: 0.2228 +/- 0.0060

**Cycle 12, PosHel**

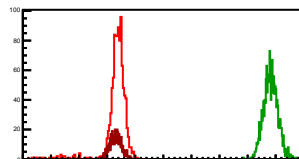
Entries: 793	Entries: 2241	Entries: 2706
Mean: 7.4918 +/- 0.0063	Mean: 12.5272 +/- 0.0066	Mean: 6.9212 +/- 0.0084
Std Dev: 0.1771 +/- 0.0044	Std Dev: 0.3148 +/- 0.0047	Std Dev: 0.4382 +/- 0.0060

**Cycle 13, PosHel**

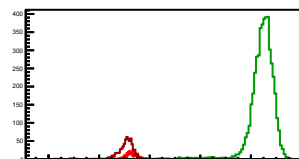
Entries: 2650	Entries: 1016	Entries: 1035
Mean: 7.5164 +/- 0.0091	Mean: 12.8926 +/- 0.0078	Mean: 7.4684 +/- 0.0059
Std Dev: 0.2107 +/- 0.0029	Std Dev: 0.2495 +/- 0.0055	Std Dev: 0.1908 +/- 0.0042

**Cycle 14, PosHel**

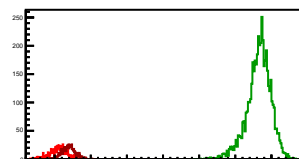
Entries: 1011	Entries: 1652	Entries: 609
Mean: 7.3371 +/- 0.0128	Mean: 12.8214 +/- 0.0062	Mean: 7.3064 +/- 0.0083
Std Dev: 0.4063 +/- 0.0090	Std Dev: 0.2514 +/- 0.0044	Std Dev: 0.2050 +/- 0.0059

**Cycle 15, PosHel**

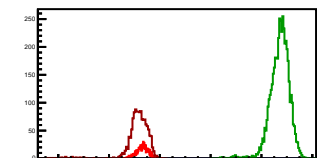
Entries: 607	Entries: 4753	Entries: 654
Mean: 7.2689 +/- 0.0062	Mean: 12.4367 +/- 0.0077	Mean: 7.0362 +/- 0.0153
Std Dev: 0.2015 +/- 0.0058	Std Dev: 0.5289 +/- 0.0054	Std Dev: 0.3920 +/- 0.0108

**Cycle 16, PosHel**

Entries: 643	Entries: 4844	Entries: 717
Mean: 7.0934 +/- 0.0095	Mean: 12.6525 +/- 0.0048	Mean: 7.3878 +/- 0.0067
Std Dev: 0.2410 +/- 0.0067	Std Dev: 0.3326 +/- 0.0034	Std Dev: 0.1803 +/- 0.0048

**Cycle 17, PosHel**

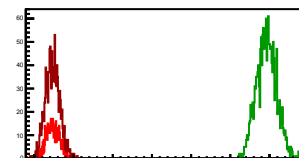
Entries: 708	Entries: 4774	Entries: 1337
Mean: 7.3221 +/- 0.0091	Mean: 12.7204 +/- 0.0056	Mean: 7.1293 +/- 0.0139
Std Dev: 0.2426 +/- 0.0064	Std Dev: 0.3383 +/- 0.0039	Std Dev: 0.5095 +/- 0.0099

**Cycle 18, PosHel**

Entries: 736	Entries: 1740	Entries: 540
Mean: 7.4427 +/- 0.0066	Mean: 12.8585 +/- 0.0059	Mean: 7.4258 +/- 0.0071
Std Dev: 0.1890 +/- 0.0047	Std Dev: 0.2468 +/- 0.0042	Std Dev: 0.1647 +/- 0.0050

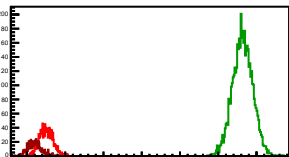
**Cycle 19, PosHel**

Entries: 524	Entries: 1846	Entries: 1333
Mean: 7.4736 +/- 0.0075	Mean: 12.9238 +/- 0.0059	Mean: 7.4612 +/- 0.0050
Std Dev: 0.1715 +/- 0.0053	Std Dev: 0.2527 +/- 0.0042	Std Dev: 0.1826 +/- 0.0035



**Cycle 1, NegHel**

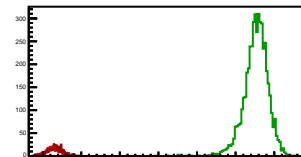
Entries: 1373	Entries: 4794	Entries: 647
Mean: 7.5044 +/- 0.0048	Mean: 12.6361 +/- 0.0038	Mean: 7.1970 +/- 0.0070
Std Dev: 0.1777 +/- 0.0034	Std Dev: 0.2597 +/- 0.0027	Std Dev: 0.1786 +/- 0.0050

**Cycle 2, NegHel**

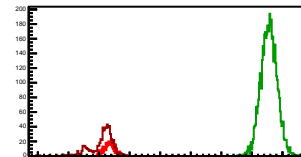
Entries: 644	Entries: 4799	Entries: 645
Mean: 7.2192 +/- 0.0066	Mean: 12.6234 +/- 0.0040	Mean: 7.3618 +/- 0.0068
Std Dev: 0.1665 +/- 0.0046	Std Dev: 0.2766 +/- 0.0028	Std Dev: 0.1723 +/- 0.0048

**Cycle 3, NegHel**

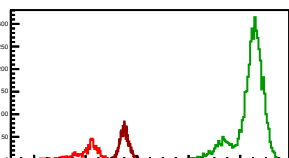
Entries: 645	Entries: 4800	Entries: 660
Mean: 7.2688 +/- 0.0074	Mean: 12.5289 +/- 0.0045	Mean: 7.3369 +/- 0.0071
Std Dev: 0.1872 +/- 0.0052	Std Dev: 0.3101 +/- 0.0032	Std Dev: 0.1817 +/- 0.0050

**Cycle 4, NegHel**

Entries: 659	Entries: 4834	Entries: 668
Mean: 7.3455 +/- 0.0067	Mean: 12.5561 +/- 0.0038	Mean: 7.0925 +/- 0.0146
Std Dev: 0.1731 +/- 0.0048	Std Dev: 0.2660 +/- 0.0027	Std Dev: 0.3774 +/- 0.0103

**Cycle 5, NegHel**

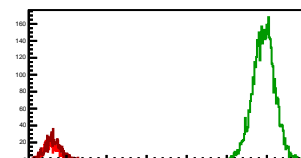
Entries: 667	Entries: 4759	Entries: 2034
Mean: 6.9167 +/- 0.0190	Mean: 12.3825 +/- 0.0081	Mean: 7.5079 +/- 0.0039
Std Dev: 0.4909 +/- 0.0134	Std Dev: 0.5580 +/- 0.0057	Std Dev: 0.1764 +/- 0.0028

**Cycle 6, NegHel**

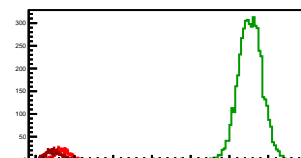
Entries: 2011	Entries: 3616	Entries: 76
Mean: 7.4562 +/- 0.0041	Mean: 12.8776 +/- 0.0045	Mean: 7.4631 +/- 0.0217
Std Dev: 0.1847 +/- 0.0029	Std Dev: 0.2709 +/- 0.0032	Std Dev: 0.1894 +/- 0.0154

**Cycle 7, NegHel**

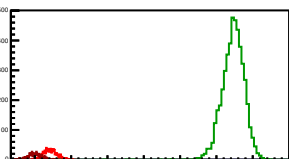
Entries: 650	Entries: 4774	Entries: 840
Mean: 7.5077 +/- 0.0069	Mean: 12.9244 +/- 0.0039	Mean: 7.6621 +/- 0.0065
Std Dev: 0.1755 +/- 0.0049	Std Dev: 0.2678 +/- 0.0027	Std Dev: 0.1887 +/- 0.0046

**Cycle 8, NegHel**

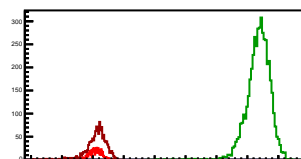
Entries: 789	Entries: 4836	Entries: 724
Mean: 7.6969 +/- 0.0062	Mean: 12.5306 +/- 0.0046	Mean: 7.4543 +/- 0.0066
Std Dev: 0.1753 +/- 0.0044	Std Dev: 0.3183 +/- 0.0032	Std Dev: 0.1789 +/- 0.0047

**Cycle 9, NegHel**

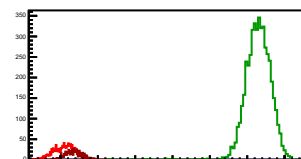
Entries: 1190	Entries: 4751	Entries: 677
Mean: 7.4208 +/- 0.0054	Mean: 12.4573 +/- 0.0046	Mean: 6.9998 +/- 0.0072
Std Dev: 0.1859 +/- 0.0038	Std Dev: 0.3170 +/- 0.0033	Std Dev: 0.1862 +/- 0.0051

**Cycle 10, NegHel**

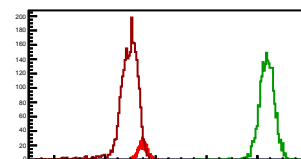
Entries: 670	Entries: 4736	Entries: 1333
Mean: 7.0740 +/- 0.0080	Mean: 12.3590 +/- 0.0055	Mean: 7.1059 +/- 0.0098
Std Dev: 0.2060 +/- 0.0056	Std Dev: 0.3768 +/- 0.0039	Std Dev: 0.3568 +/- 0.0069

**Cycle 11, NegHel**

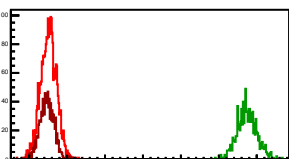
Entries: 1283	Entries: 4763	Entries: 700
Mean: 7.1016 +/- 0.0079	Mean: 12.2909 +/- 0.0050	Mean: 7.3591 +/- 0.0085
Std Dev: 0.2838 +/- 0.0056	Std Dev: 0.3451 +/- 0.0035	Std Dev: 0.2260 +/- 0.0060

**Cycle 12, NegHel**

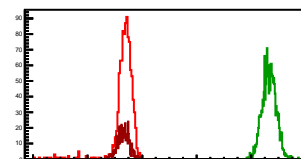
Entries: 793	Entries: 4241	Entries: 2706
Mean: 7.4932 +/- 0.0062	Mean: 12.3758 +/- 0.0064	Mean: 6.9214 +/- 0.0085
Std Dev: 0.1752 +/- 0.0044	Std Dev: 0.3037 +/- 0.0045	Std Dev: 0.4435 +/- 0.0060

**Cycle 13, NegHel**

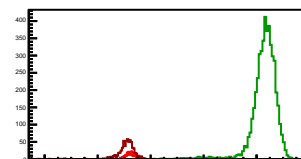
Entries: 2650	Entries: 1016	Entries: 1035
Mean: 7.5107 +/- 0.0040	Mean: 12.7459 +/- 0.0080	Mean: 7.4717 +/- 0.0058
Std Dev: 0.2083 +/- 0.0029	Std Dev: 0.2555 +/- 0.0057	Std Dev: 0.1865 +/- 0.0041

**Cycle 14, NegHel**

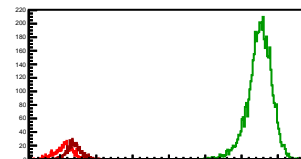
Entries: 1011	Entries: 1652	Entries: 609
Mean: 7.3360 +/- 0.0134	Mean: 12.6590 +/- 0.0063	Mean: 7.3150 +/- 0.0086
Std Dev: 0.4271 +/- 0.0095	Std Dev: 0.2550 +/- 0.0044	Std Dev: 0.2120 +/- 0.0061

**Cycle 15, NegHel**

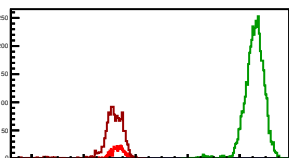
Entries: 607	Entries: 4753	Entries: 654
Mean: 7.2577 +/- 0.0077	Mean: 12.2848 +/- 0.0074	Mean: 7.0519 +/- 0.0157
Std Dev: 0.1905 +/- 0.0055	Std Dev: 0.5067 +/- 0.0052	Std Dev: 0.4025 +/- 0.0111

**Cycle 16, NegHel**

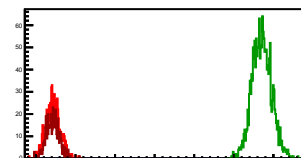
Entries: 1033	Entries: 4844	Entries: 717
Mean: 7.1038 +/- 0.0099	Mean: 12.4983 +/- 0.0047	Mean: 7.3929 +/- 0.0071
Std Dev: 0.2511 +/- 0.0070	Std Dev: 0.3304 +/- 0.0034	Std Dev: 0.1892 +/- 0.0050

**Cycle 17, NegHel**

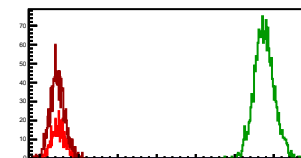
Entries: 708	Entries: 4774	Entries: 1337
Mean: 7.3217 +/- 0.0087	Mean: 12.5670 +/- 0.0055	Mean: 7.1254 +/- 0.0140
Std Dev: 0.2224 +/- 0.0062	Std Dev: 0.3831 +/- 0.0039	Std Dev: 0.5128 +/- 0.0099

**Cycle 18, NegHel**

Entries: 736	Entries: 1740	Entries: 540
Mean: 7.4340 +/- 0.0065	Mean: 12.7082 +/- 0.0059	Mean: 7.4239 +/- 0.0071
Std Dev: 0.1757 +/- 0.0046	Std Dev: 0.2443 +/- 0.0041	Std Dev: 0.1647 +/- 0.0050

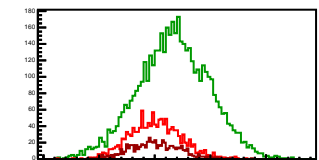
**Cycle 19, NegHel**

Entries: 524	Entries: 1846	Entries: 1333
Mean: 7.4848 +/- 0.0081	Mean: 12.7536 +/- 0.0059	Mean: 7.4565 +/- 0.0051
Std Dev: 0.1844 +/- 0.0057	Std Dev: 0.2549 +/- 0.0042	Std Dev: 0.1873 +/- 0.0036



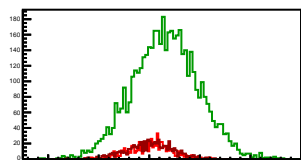
### Cycle 1, Diffs

Entries: 1373	Entries: 4794	Entries: 647
Mean: 0.0037 +/- 0.0063	Mean: 0.1674 +/- 0.0046	Mean: 0.0052 +/- 0.0087
Std Dev: 0.2325 +/- 0.0044	Std Dev: 0.3219 +/- 0.0033	Std Dev: 0.2204 +/- 0.0061



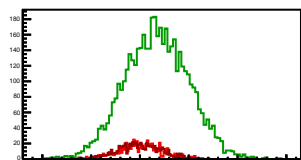
### Cycle 2, Diffs

Entries: 644	Entries: 4799	Entries: 645
Mean: 0.0067 +/- 0.0082	Mean: 0.1589 +/- 0.0047	Mean: 0.0035 +/- 0.0089
Std Dev: 0.2078 +/- 0.0058	Std Dev: 0.3255 +/- 0.0033	Std Dev: 0.2252 +/- 0.0063



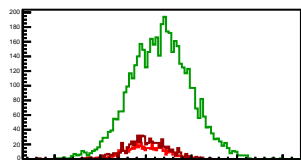
### Cycle 3, Diffs

Entries: 645	Entries: 4800	Entries: 660
Mean: 0.0060 +/- 0.0092	Mean: 0.1698 +/- 0.0047	Mean: -0.0030 +/- 0.0085
Std Dev: 0.2329 +/- 0.0065	Std Dev: 0.3270 +/- 0.0033	Std Dev: 0.2193 +/- 0.0060



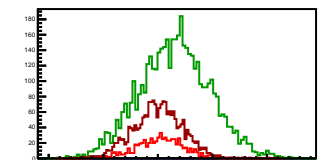
### Cycle 4, Diffs

Entries: 659	Entries: 4834	Entries: 668
Mean: -0.0064 +/- 0.0087	Mean: 0.1604 +/- 0.0047	Mean: 0.0031 +/- 0.0090
Std Dev: 0.2240 +/- 0.0062	Std Dev: 0.3275 +/- 0.0033	Std Dev: 0.2333 +/- 0.0064



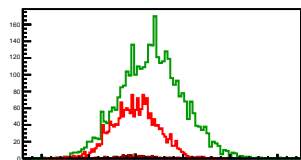
### Cycle 5, Diffs

Entries: 667	Entries: 4759	Entries: 2034
Mean: 0.0162 +/- 0.0089	Mean: 0.1540 +/- 0.0047	Mean: 0.0013 +/- 0.0049
Std Dev: 0.2309 +/- 0.0063	Std Dev: 0.3241 +/- 0.0033	Std Dev: 0.2231 +/- 0.0035



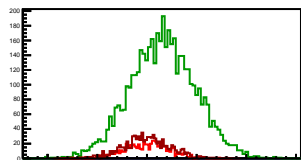
### Cycle 6, Diffs

Entries: 2011	Entries: 3616	Entries: 76
Mean: -0.0060 +/- 0.0053	Mean: 0.1675 +/- 0.0055	Mean: 0.0249 +/- 0.0233
Std Dev: 0.2395 +/- 0.0038	Std Dev: 0.3305 +/- 0.0039	Std Dev: 0.2030 +/- 0.0165



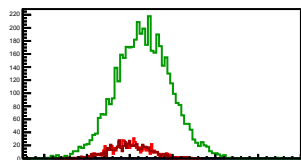
### Cycle 7, Diffs

Entries: 650	Entries: 4774	Entries: 840
Mean: -0.0052 +/- 0.0089	Mean: 0.1575 +/- 0.0048	Mean: -0.0054 +/- 0.0080
Std Dev: 0.2268 +/- 0.0063	Std Dev: 0.3287 +/- 0.0034	Std Dev: 0.2313 +/- 0.0056



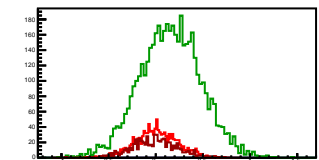
### Cycle 8, Diffs

Entries: 789	Entries: 4836	Entries: 724
Mean: -0.0040 +/- 0.0084	Mean: 0.1585 +/- 0.0046	Mean: -0.0002 +/- 0.0088
Std Dev: 0.2354 +/- 0.0059	Std Dev: 0.3220 +/- 0.0033	Std Dev: 0.2370 +/- 0.0082



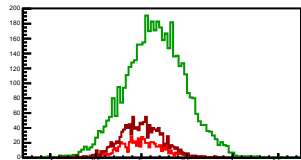
### Cycle 9, Diffs

Entries: 1190	Entries: 4751	Entries: 677
Mean: 0.0014 +/- 0.0066	Mean: 0.1542 +/- 0.0047	Mean: -0.0144 +/- 0.0092
Std Dev: 0.2268 +/- 0.0046	Std Dev: 0.3261 +/- 0.0033	Std Dev: 0.2383 +/- 0.0065



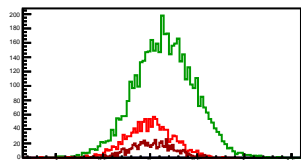
### Cycle 10, Diffs

Entries: 670	Entries: 4736	Entries: 1333
Mean: -0.0015 +/- 0.0093	Mean: 0.1560 +/- 0.0048	Mean: 0.0019 +/- 0.0065
Std Dev: 0.2416 +/- 0.0068	Std Dev: 0.3321 +/- 0.0034	Std Dev: 0.2363 +/- 0.0046



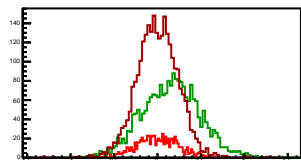
### Cycle 11, Diffs

Entries: 1283	Entries: 4763	Entries: 700
Mean: -0.0048 +/- 0.0068	Mean: 0.1523 +/- 0.0046	Mean: 0.0194 +/- 0.0086
Std Dev: 0.2430 +/- 0.0048	Std Dev: 0.3184 +/- 0.0033	Std Dev: 0.2282 +/- 0.0061



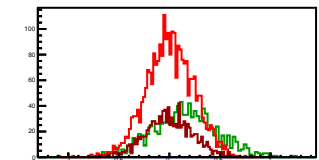
### Cycle 12, Diffs

Entries: 793	Entries: 4821	Entries: 2706
Mean: -0.0014 +/- 0.0082	Mean: 0.1514 +/- 0.0070	Mean: -0.0003 +/- 0.0046
Std Dev: 0.2310 +/- 0.0058	Std Dev: 0.3310 +/- 0.0049	Std Dev: 0.2404 +/- 0.0033



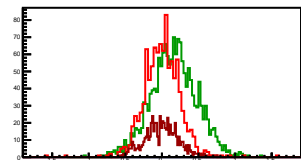
### Cycle 13, Diffs

Entries: 2650	Entries: 1016	Entries: 1035
Mean: 0.0003 +/- 0.0085	Mean: 0.1487 +/- 0.0047	Mean: -0.0038 +/- 0.0071
Std Dev: 0.2332 +/- 0.0032	Std Dev: 0.3223 +/- 0.0071	Std Dev: 0.2268 +/- 0.0050



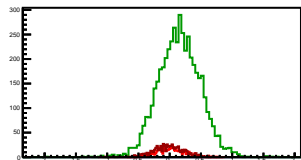
### Cycle 14, Diffs

Entries: 1011	Entries: 1652	Entries: 609
Mean: 0.0010 +/- 0.0078	Mean: 0.1525 +/- 0.0078	Mean: -0.0086 +/- 0.0092
Std Dev: 0.2482 +/- 0.0055	Std Dev: 0.3175 +/- 0.0055	Std Dev: 0.2282 +/- 0.0065



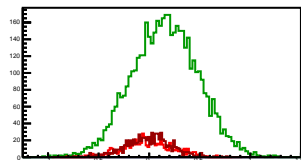
### Cycle 15, Diffs

Entries: 607	Entries: 4753	Entries: 654
Mean: 0.0112 +/- 0.0087	Mean: 0.1518 +/- 0.0049	Mean: -0.0158 +/- 0.0094
Std Dev: 0.2154 +/- 0.0062	Std Dev: 0.3348 +/- 0.0034	Std Dev: 0.2405 +/- 0.0067



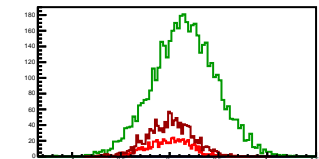
### Cycle 16, Diffs

Entries: 643	Entries: 4844	Entries: 717
Mean: -0.0103 +/- 0.0096	Mean: 0.1542 +/- 0.0047	Mean: -0.0051 +/- 0.0084
Std Dev: 0.2438 +/- 0.0068	Std Dev: 0.3252 +/- 0.0033	Std Dev: 0.2251 +/- 0.0059



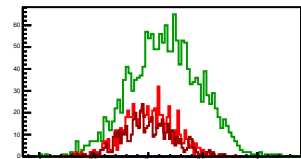
### Cycle 17, Diffs

Entries: 708	Entries: 4774	Entries: 1337
Mean: 0.0003 +/- 0.0085	Mean: 0.1535 +/- 0.0047	Mean: 0.0038 +/- 0.0063
Std Dev: 0.2253 +/- 0.0060	Std Dev: 0.3237 +/- 0.0033	Std Dev: 0.2307 +/- 0.0045



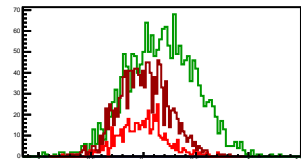
### Cycle 18, Diffs

Entries: 736	Entries: 1740	Entries: 540
Mean: 0.0087 +/- 0.0084	Mean: 0.1523 +/- 0.0077	Mean: 0.0019 +/- 0.0098
Std Dev: 0.2288 +/- 0.0060	Std Dev: 0.3210 +/- 0.0054	Std Dev: 0.2286 +/- 0.0070



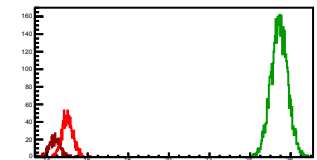
### Cycle 19, Diffs

Entries: 524	Entries: 1846	Entries: 1333
Mean: -0.0113 +/- 0.0101	Mean: 0.1702 +/- 0.0076	Mean: 0.0047 +/- 0.0065
Std Dev: 0.2302 +/- 0.0071	Std Dev: 0.3269 +/- 0.0054	Std Dev: 0.2358 +/- 0.0046



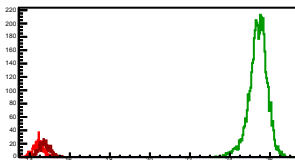
### Cycle 1, Sums

Entries: 1373	Entries: 4794	Entries: 647
Mean: 15.0125 $\pm$ 0.0073	Mean: 25.4396 $\pm$ 0.0060	Mean: 14.3991 $\pm$ 0.0108
Std Dev: 0.2698 $\pm$ 0.0051	Std Dev: 0.4135 $\pm$ 0.0042	Std Dev: 0.2759 $\pm$ 0.0077



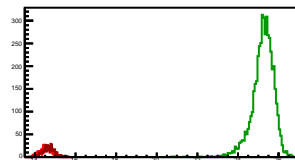
### Cycle 2, Sums

Entries: 644	Entries: 4799	Entries: 645
Mean: 14.4452 $\pm$ 0.0103	Mean: 25.4057 $\pm$ 0.0066	Mean: 14.7270 $\pm$ 0.0104
Std Dev: 0.2612 $\pm$ 0.0073	Std Dev: 0.4571 $\pm$ 0.0047	Std Dev: 0.2637 $\pm$ 0.0073



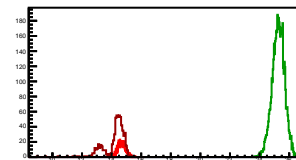
### Cycle 3, Sums

Entries: 645	Entries: 4800	Entries: 660
Mean: 14.5437 $\pm$ 0.0115	Mean: 25.2276 $\pm$ 0.0078	Mean: 14.6709 $\pm$ 0.0110
Std Dev: 0.2928 $\pm$ 0.0082	Std Dev: 0.5403 $\pm$ 0.0055	Std Dev: 0.2817 $\pm$ 0.0078



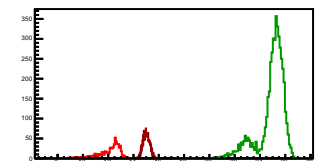
### Cycle 4, Sums

Entries: 659	Entries: 4834	Entries: 668
Mean: 14.6845 $\pm$ 0.0100	Mean: 25.2725 $\pm$ 0.0061	Mean: 14.1882 $\pm$ 0.0285
Std Dev: 0.2578 $\pm$ 0.0071	Std Dev: 0.4238 $\pm$ 0.0043	Std Dev: 0.7362 $\pm$ 0.0201



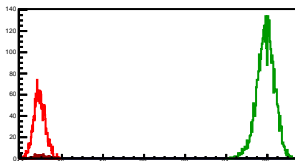
### Cycle 5, Sums

Entries: 667	Entries: 4759	Entries: 2034
Mean: 12.0497 $\pm$ 0.0375	Mean: 24.9191 $\pm$ 0.0155	Mean: 15.0171 $\pm$ 0.0060
Std Dev: 0.9680 $\pm$ 0.0265	Std Dev: 1.0666 $\pm$ 0.0102	Std Dev: 0.2697 $\pm$ 0.0042



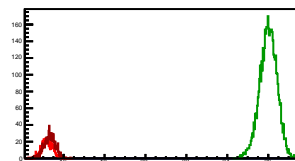
### Cycle 6, Sums

Entries: 2011	Entries: 3616	Entries: 76
Mean: 14.9065 $\pm$ 0.0062	Mean: 25.9227 $\pm$ 0.0072	Mean: 14.9512 $\pm$ 0.0312
Std Dev: 0.2791 $\pm$ 0.0044	Std Dev: 0.4340 $\pm$ 0.0051	Std Dev: 0.2721 $\pm$ 0.0221



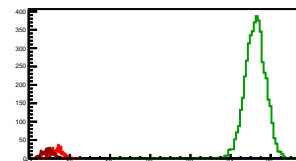
### Cycle 7, Sums

Entries: 650	Entries: 4774	Entries: 840
Mean: 15.2101 $\pm$ 0.0107	Mean: 26.0062 $\pm$ 0.0061	Mean: 15.3188 $\pm$ 0.0098
Std Dev: 0.2726 $\pm$ 0.0076	Std Dev: 0.4228 $\pm$ 0.0043	Std Dev: 0.2833 $\pm$ 0.0069



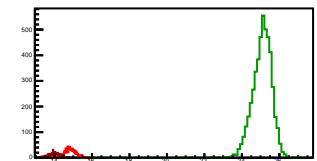
### Cycle 8, Sums

Entries: 789	Entries: 4836	Entries: 724
Mean: 15.3899 $\pm$ 0.0093	Mean: 25.2198 $\pm$ 0.0079	Mean: 14.9083 $\pm$ 0.0102
Std Dev: 0.2626 $\pm$ 0.0066	Std Dev: 0.5522 $\pm$ 0.0056	Std Dev: 0.2732 $\pm$ 0.0072



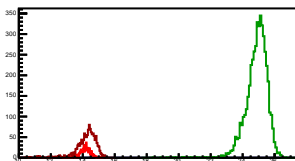
### Cycle 9, Sums

Entries: 1190	Entries: 4751	Entries: 677
Mean: 14.8430 $\pm$ 0.0084	Mean: 25.0688 $\pm$ 0.0079	Mean: 13.9853 $\pm$ 0.0116
Std Dev: 0.2885 $\pm$ 0.0059	Std Dev: 0.5434 $\pm$ 0.0056	Std Dev: 0.3030 $\pm$ 0.0082



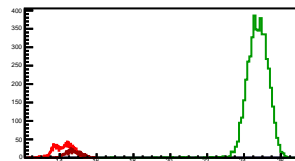
### Cycle 10, Sums

Entries: 670	Entries: 4736	Entries: 1333
Mean: 14.1464 $\pm$ 0.0128	Mean: 24.8739 $\pm$ 0.0098	Mean: 14.2137 $\pm$ 0.0186
Std Dev: 0.3315 $\pm$ 0.0091	Std Dev: 0.6741 $\pm$ 0.0069	Std Dev: 0.6805 $\pm$ 0.0132



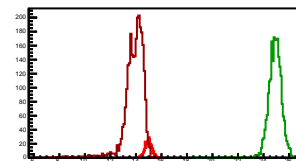
### Cycle 11, Sums

Entries: 1283	Entries: 4763	Entries: 700
Mean: 14.1993 $\pm$ 0.0139	Mean: 24.7341 $\pm$ 0.0089	Mean: 14.7376 $\pm$ 0.0146
Std Dev: 0.4996 $\pm$ 0.0099	Std Dev: 0.6156 $\pm$ 0.0063	Std Dev: 0.3865 $\pm$ 0.0103



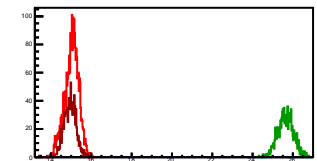
### Cycle 12, Sums

Entries: 793	Entries: 2241	Entries: 2706
Mean: 14.9851 $\pm$ 0.0094	Mean: 24.9030 $\pm$ 0.0110	Mean: 13.8426 $\pm$ 0.0163
Std Dev: 0.2660 $\pm$ 0.0067	Std Dev: 0.5526 $\pm$ 0.0078	Std Dev: 0.8483 $\pm$ 0.0115



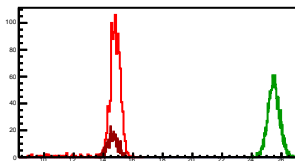
### Cycle 13, Sums

Entries: 2650	Entries: 1016	Entries: 1035
Mean: 15.0271 $\pm$ 0.0068	Mean: 25.6386 $\pm$ 0.0122	Mean: 14.2541 $\pm$ 0.0094
Std Dev: 0.3481 $\pm$ 0.0048	Std Dev: 0.3888 $\pm$ 0.0086	Std Dev: 0.3016 $\pm$ 0.0066



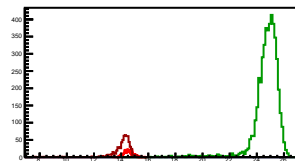
### Cycle 14, Sums

Entries: 1011	Entries: 1652	Entries: 609
Mean: 14.6761 $\pm$ 0.0100	Mean: 25.4804 $\pm$ 0.0097	Mean: 14.6213 $\pm$ 0.0141
Std Dev: 0.7959 $\pm$ 0.0177	Std Dev: 0.3944 $\pm$ 0.0069	Std Dev: 0.3491 $\pm$ 0.0100



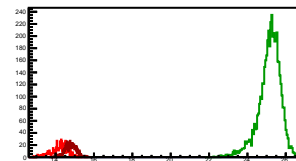
### Cycle 15, Sums

Entries: 607	Entries: 4753	Entries: 654
Mean: 14.5265 $\pm$ 0.0133	Mean: 24.7215 $\pm$ 0.0142	Mean: 14.0881 $\pm$ 0.0296
Std Dev: 0.3277 $\pm$ 0.0094	Std Dev: 0.9802 $\pm$ 0.0101	Std Dev: 0.7573 $\pm$ 0.0209



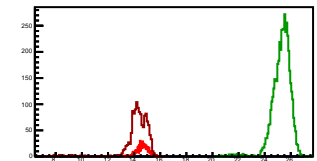
### Cycle 16, Sums

Entries: 643	Entries: 4844	Entries: 717
Mean: 14.1972 $\pm$ 0.0169	Mean: 25.1508 $\pm$ 0.0083	Mean: 14.7807 $\pm$ 0.0109
Std Dev: 0.4275 $\pm$ 0.0119	Std Dev: 0.5778 $\pm$ 0.0059	Std Dev: 0.2932 $\pm$ 0.0077



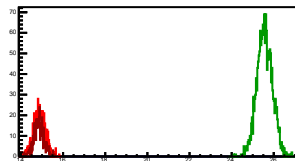
### Cycle 17, Sums

Entries: 708	Entries: 4774	Entries: 1337
Mean: 14.6438 $\pm$ 0.0157	Mean: 25.2874 $\pm$ 0.0101	Mean: 14.2547 $\pm$ 0.0272
Std Dev: 0.4184 $\pm$ 0.0111	Std Dev: 0.6958 $\pm$ 0.0071	Std Dev: 0.9959 $\pm$ 0.0193



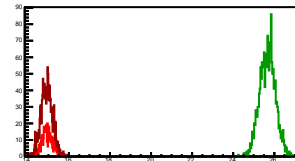
### Cycle 18, Sums

Entries: 736	Entries: 1740	Entries: 540
Mean: 14.6767 $\pm$ 0.0100	Mean: 25.5648 $\pm$ 0.0089	Mean: 14.8496 $\pm$ 0.0102
Std Dev: 0.2723 $\pm$ 0.0071	Std Dev: 0.3717 $\pm$ 0.0063	Std Dev: 0.2371 $\pm$ 0.0072



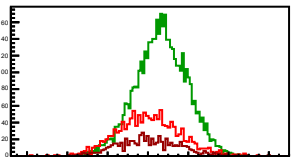
### Cycle 19, Sums

Entries: 524	Entries: 1846	Entries: 1333
Mean: 14.5254 $\pm$ 0.0119	Mean: 25.6773 $\pm$ 0.0090	Mean: 14.9176 $\pm$ 0.0078
Std Dev: 0.2717 $\pm$ 0.0084	Std Dev: 0.3884 $\pm$ 0.0064	Std Dev: 0.2851 $\pm$ 0.0055



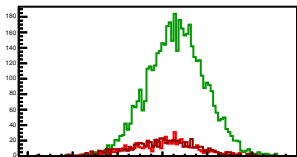
### Cycle 1, Asyms

Entries: 1373	Entries: 4794	Entries: 647
Mean: 0.0002 +/- 0.0004	Mean: 0.0066 +/- 0.0002	Mean: 0.0004 +/- 0.0006
Std Dev: 0.0155 +/- 0.0003	Std Dev: 0.0126 +/- 0.0001	Std Dev: 0.0153 +/- 0.0004



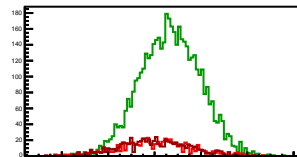
### Cycle 2, Asyms

Entries: 644	Entries: 4799	Entries: 645
Mean: 0.0005 +/- 0.0006	Mean: 0.0062 +/- 0.0002	Mean: 0.0002 +/- 0.0006
Std Dev: 0.0144 +/- 0.0004	Std Dev: 0.0128 +/- 0.0001	Std Dev: 0.0153 +/- 0.0004



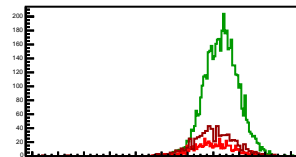
### Cycle 3, Asyms

Entries: 645	Entries: 4800	Entries: 660
Mean: 0.0004 +/- 0.0006	Mean: 0.0067 +/- 0.0002	Mean: -0.0002 +/- 0.0006
Std Dev: 0.0160 +/- 0.0004	Std Dev: 0.0129 +/- 0.0001	Std Dev: 0.0149 +/- 0.0004



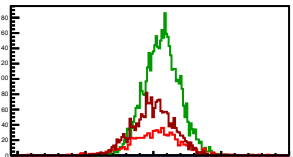
### Cycle 4, Asyms

Entries: 659	Entries: 4834	Entries: 668
Mean: -0.0004 +/- 0.0006	Mean: 0.0063 +/- 0.0002	Mean: 0.0001 +/- 0.0007
Std Dev: 0.0153 +/- 0.0004	Std Dev: 0.0130 +/- 0.0001	Std Dev: 0.0172 +/- 0.0005



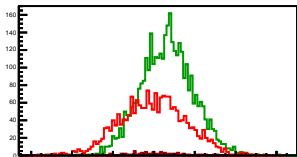
### Cycle 5, Asyms

Entries: 667	Entries: 4759	Entries: 2034
Mean: 0.0012 +/- 0.0008	Mean: 0.0062 +/- 0.0002	Mean: 0.0001 +/- 0.0003
Std Dev: 0.0198 +/- 0.0005	Std Dev: 0.0131 +/- 0.0001	Std Dev: 0.0148 +/- 0.0002



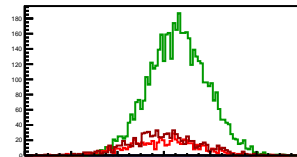
### Cycle 6, Asyms

Entries: 2011	Entries: 3616	Entries: 76
Mean: -0.0004 +/- 0.0004	Mean: 0.0065 +/- 0.0002	Mean: 0.0017 +/- 0.0015
Std Dev: 0.0160 +/- 0.0003	Std Dev: 0.0127 +/- 0.0001	Std Dev: 0.0135 +/- 0.0011



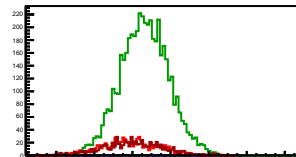
### Cycle 7, Asyms

Entries: 650	Entries: 4774	Entries: 840
Mean: -0.0003 +/- 0.0006	Mean: 0.0061 +/- 0.0002	Mean: -0.0003 +/- 0.0005
Std Dev: 0.0149 +/- 0.0004	Std Dev: 0.0126 +/- 0.0001	Std Dev: 0.0151 +/- 0.0004



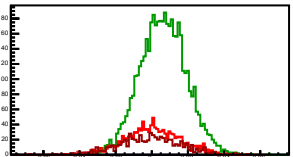
### Cycle 8, Asyms

Entries: 789	Entries: 4836	Entries: 724
Mean: -0.0003 +/- 0.0005	Mean: 0.0063 +/- 0.0002	Mean: -0.0000 +/- 0.0006
Std Dev: 0.0153 +/- 0.0004	Std Dev: 0.0128 +/- 0.0001	Std Dev: 0.0159 +/- 0.0004



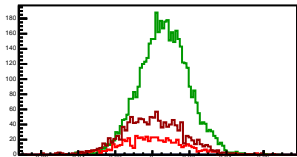
### Cycle 9, Asyms

Entries: 1190	Entries: 4751	Entries: 677
Mean: 0.0001 +/- 0.0004	Mean: 0.0062 +/- 0.0002	Mean: -0.0011 +/- 0.0007
Std Dev: 0.0153 +/- 0.0003	Std Dev: 0.0130 +/- 0.0001	Std Dev: 0.0171 +/- 0.0005



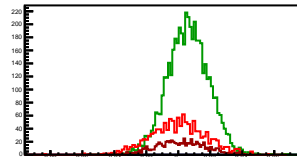
### Cycle 10, Asyms

Entries: 670	Entries: 4676	Entries: 1333
Mean: -0.0001 +/- 0.0007	Mean: 0.0063 +/- 0.0002	Mean: 0.0001 +/- 0.0005
Std Dev: 0.0171 +/- 0.0005	Std Dev: 0.0134 +/- 0.0001	Std Dev: 0.0167 +/- 0.0003



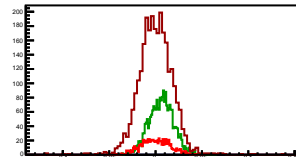
### Cycle 11, Asyms

Entries: 1283	Entries: 4763	Entries: 700
Mean: -0.0003 +/- 0.0005	Mean: 0.0062 +/- 0.0002	Mean: 0.0013 +/- 0.0006
Std Dev: 0.0171 +/- 0.0003	Std Dev: 0.0129 +/- 0.0001	Std Dev: 0.0154 +/- 0.0004



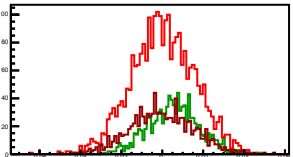
### Cycle 12, Asyms

Entries: 793	Entries: 2241	Entries: 2706
Mean: -0.0001 +/- 0.0005	Mean: 0.0061 +/- 0.0003	Mean: 0.0000 +/- 0.0004
Std Dev: 0.0154 +/- 0.0004	Std Dev: 0.0133 +/- 0.0002	Std Dev: 0.0184 +/- 0.0002



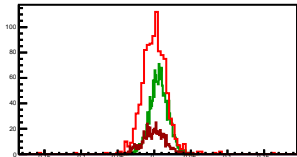
### Cycle 13, Asyms

Entries: 2650	Entries: 1016	Entries: 1035
Mean: -0.0004 +/- 0.0003	Mean: 0.0057 +/- 0.0004	Mean: -0.0002 +/- 0.0005
Std Dev: 0.0155 +/- 0.0002	Std Dev: 0.0125 +/- 0.0003	Std Dev: 0.0152 +/- 0.0003



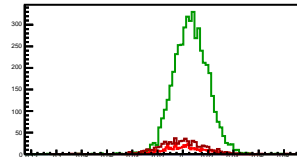
### Cycle 14, Asyms

Entries: 1011	Entries: 1652	Entries: 609
Mean: 0.0002 +/- 0.0006	Mean: 0.0064 +/- 0.0003	Mean: -0.0006 +/- 0.0006
Std Dev: 0.0183 +/- 0.0004	Std Dev: 0.0124 +/- 0.0002	Std Dev: 0.0156 +/- 0.0004



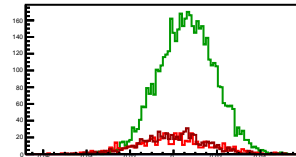
### Cycle 15, Asyms

Entries: 607	Entries: 4753	Entries: 654
Mean: -0.0007 +/- 0.0006	Mean: 0.0061 +/- 0.0002	Mean: -0.0011 +/- 0.0007
Std Dev: 0.0148 +/- 0.0004	Std Dev: 0.0138 +/- 0.0001	Std Dev: 0.0177 +/- 0.0005



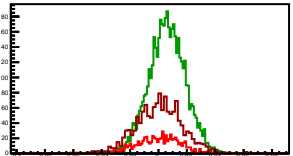
### Cycle 16, Asyms

Entries: 643	Entries: 4844	Entries: 717
Mean: -0.0007 +/- 0.0007	Mean: 0.0061 +/- 0.0002	Mean: -0.0003 +/- 0.0006
Std Dev: 0.0171 +/- 0.0005	Std Dev: 0.0129 +/- 0.0001	Std Dev: 0.0152 +/- 0.0004



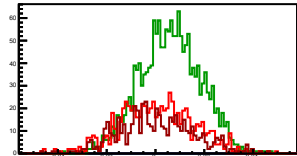
### Cycle 17, Asyms

Entries: 708	Entries: 4774	Entries: 1337
Mean: -0.0004 +/- 0.0006	Mean: 0.0051 +/- 0.0002	Mean: 0.0003 +/- 0.0005
Std Dev: 0.0154 +/- 0.0004	Std Dev: 0.0128 +/- 0.0001	Std Dev: 0.0166 +/- 0.0003



### Cycle 18, Asyms

Entries: 736	Entries: 1740	Entries: 540
Mean: 0.0006 +/- 0.0006	Mean: 0.0060 +/- 0.0003	Mean: 0.0001 +/- 0.0007
Std Dev: 0.0154 +/- 0.0004	Std Dev: 0.0125 +/- 0.0002	Std Dev: 0.0154 +/- 0.0005



### Cycle 19, Asyms

Entries: 524	Entries: 1846	Entries: 1333
Mean: -0.0007 +/- 0.0007	Mean: 0.0056 +/- 0.0003	Mean: 0.0003 +/- 0.0004
Std Dev: 0.0154 +/- 0.0005	Std Dev: 0.0127 +/- 0.0002	Std Dev: 0.0158 +/- 0.0003

