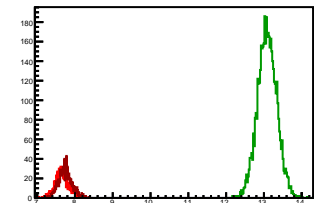


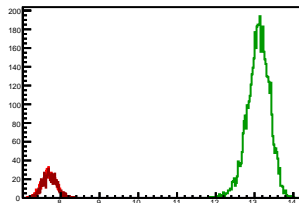
Cycle 1, PosHel

Entries: 801	Entries: 4709	Entries: 932
Mean: 7.6582 +/- 0.0065	Mean: 13.0860 +/- 0.0037	Mean: 7.7468 +/- 0.0059
Std Dev: 0.1830 +/- 0.0046	Std Dev: 0.2561 +/- 0.0028	Std Dev: 0.1809 +/- 0.0042



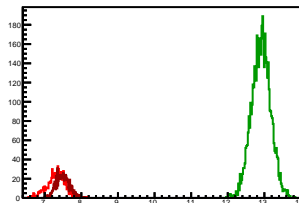
Cycle 2, PosHel

Entries: 864	Entries: 4837	Entries: 832
Mean: 7.6951 +/- 0.0062	Mean: 13.1000 +/- 0.0041	Mean: 7.7176 +/- 0.0065
Std Dev: 0.1827 +/- 0.0044	Std Dev: 0.2874 +/- 0.0029	Std Dev: 0.1884 +/- 0.0046



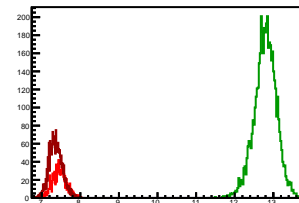
Cycle 3, PosHel

Entries: 805	Entries: 4832	Entries: 836
Mean: 7.3110 +/- 0.0068	Mean: 12.9090 +/- 0.0038	Mean: 7.4940 +/- 0.0063
Std Dev: 0.2486 +/- 0.0062	Std Dev: 0.2611 +/- 0.0027	Std Dev: 0.1808 +/- 0.0044



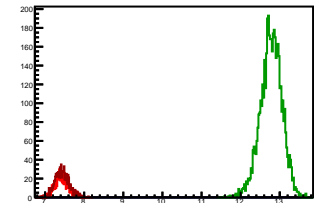
Cycle 4, PosHel

Entries: 1187	Entries: 4784	Entries: 1966
Mean: 7.4604 +/- 0.0052	Mean: 12.7929 +/- 0.0042	Mean: 7.3655 +/- 0.0039
Std Dev: 0.1808 +/- 0.0037	Std Dev: 0.2885 +/- 0.0029	Std Dev: 0.1739 +/- 0.0028



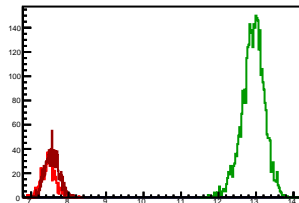
Cycle 5, PosHel

Entries: 722	Entries: 4770	Entries: 837
Mean: 7.4229 +/- 0.0068	Mean: 12.7777 +/- 0.0040	Mean: 7.4357 +/- 0.0063
Std Dev: 0.1832 +/- 0.0048	Std Dev: 0.2756 +/- 0.0028	Std Dev: 0.1808 +/- 0.0044



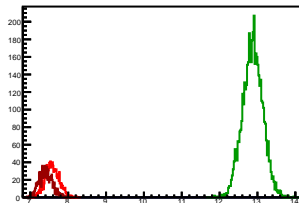
Cycle 6, PosHel

Entries: 810	Entries: 3722	Entries: 1286
Mean: 7.4617 +/- 0.0063	Mean: 12.9192 +/- 0.0049	Mean: 7.5632 +/- 0.0052
Std Dev: 0.1799 +/- 0.0045	Std Dev: 0.3010 +/- 0.0035	Std Dev: 0.1855 +/- 0.0037



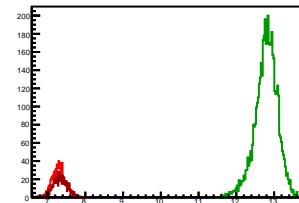
Cycle 7, PosHel

Entries: 1239	Entries: 4619	Entries: 946
Mean: 7.5725 +/- 0.0052	Mean: 12.8743 +/- 0.0039	Mean: 7.4016 +/- 0.0058
Std Dev: 0.1847 +/- 0.0037	Std Dev: 0.2674 +/- 0.0028	Std Dev: 0.1789 +/- 0.0041



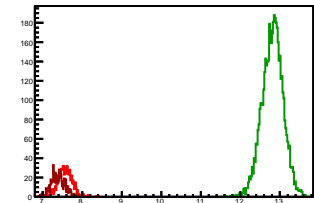
Cycle 8, PosHel

Entries: 920	Entries: 4819	Entries: 747
Mean: 7.2999 +/- 0.0057	Mean: 12.7920 +/- 0.0043	Mean: 7.3342 +/- 0.0065
Std Dev: 0.1743 +/- 0.0041	Std Dev: 0.2962 +/- 0.0030	Std Dev: 0.1784 +/- 0.0046



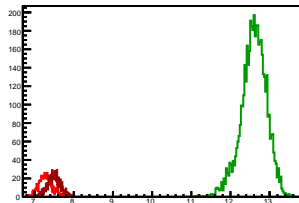
Cycle 9, PosHel

Entries: 823	Entries: 4764	Entries: 736
Mean: 7.5670 +/- 0.0064	Mean: 12.8135 +/- 0.0039	Mean: 7.3893 +/- 0.0065
Std Dev: 0.1838 +/- 0.0045	Std Dev: 0.2661 +/- 0.0027	Std Dev: 0.1753 +/- 0.0046



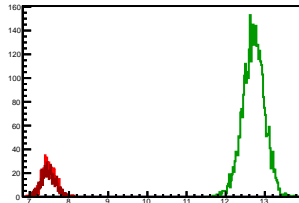
Cycle 10, PosHel

Entries: 738	Entries: 4798	Entries: 872
Mean: 7.2923 +/- 0.0068	Mean: 12.9552 +/- 0.0047	Mean: 7.4921 +/- 0.0058
Std Dev: 0.1845 +/- 0.0048	Std Dev: 0.3247 +/- 0.0033	Std Dev: 0.1720 +/- 0.0041



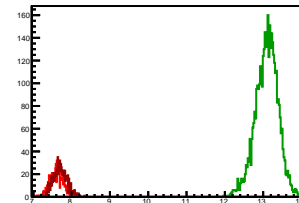
Cycle 11, PosHel

Entries: 828	Entries: 3806	Entries: 749
Mean: 7.4829 +/- 0.0059	Mean: 12.7095 +/- 0.0045	Mean: 7.4769 +/- 0.0068
Std Dev: 0.1688 +/- 0.0041	Std Dev: 0.2757 +/- 0.0032	Std Dev: 0.1866 +/- 0.0048



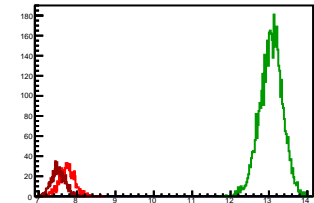
Cycle 12, PosHel

Entries: 747	Entries: 4068	Entries: 869
Mean: 7.6110 +/- 0.0063	Mean: 13.0902 +/- 0.0046	Mean: 7.7016 +/- 0.0060
Std Dev: 0.1723 +/- 0.0045	Std Dev: 0.2946 +/- 0.0033	Std Dev: 0.1756 +/- 0.0042



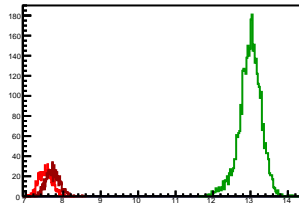
Cycle 13, PosHel

Entries: 829	Entries: 4717	Entries: 871
Mean: 7.7392 +/- 0.0070	Mean: 13.0563 +/- 0.0043	Mean: 7.5103 +/- 0.0061
Std Dev: 0.2017 +/- 0.0050	Std Dev: 0.2956 +/- 0.0030	Std Dev: 0.1793 +/- 0.0043



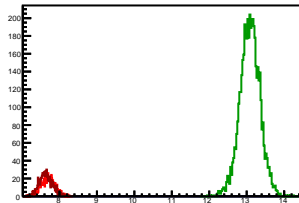
Cycle 14, PosHel

Entries: 836	Entries: 3803	Entries: 767
Mean: 7.5314 +/- 0.0061	Mean: 12.9924 +/- 0.0048	Mean: 7.7185 +/- 0.0065
Std Dev: 0.1773 +/- 0.0043	Std Dev: 0.2956 +/- 0.0034	Std Dev: 0.1795 +/- 0.0046



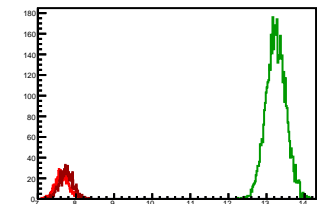
Cycle 15, PosHel

Entries: 756	Entries: 4740	Entries: 818
Mean: 7.6876 +/- 0.0065	Mean: 13.0877 +/- 0.0039	Mean: 7.6332 +/- 0.0063
Std Dev: 0.1787 +/- 0.0046	Std Dev: 0.2680 +/- 0.0028	Std Dev: 0.1808 +/- 0.0045



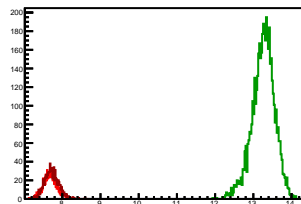
Cycle 1, NegHel

Entries: 801	Entries: 4709	Entries: 932
Mean: 7.6399 +/- 0.0063	Mean: 13.2472 +/- 0.0038	Mean: 7.7470 +/- 0.0057
Std Dev: 0.1789 +/- 0.0045	Std Dev: 0.2595 +/- 0.0027	Std Dev: 0.1749 +/- 0.0041



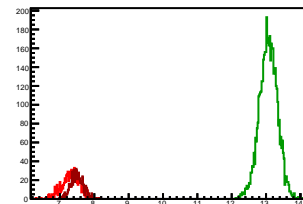
Cycle 2, NegHel

Entries: 864	Entries: 4837	Entries: 832
Mean: 7.6862 +/- 0.0061	Mean: 13.2591 +/- 0.0043	Mean: 7.7186 +/- 0.0064
Std Dev: 0.1791 +/- 0.0043	Std Dev: 0.2974 +/- 0.0030	Std Dev: 0.1849 +/- 0.0045



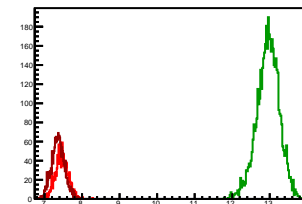
Cycle 3, NegHel

Entries: 805	Entries: 4832	Entries: 836
Mean: 7.3023 +/- 0.0092	Mean: 13.0682 +/- 0.0038	Mean: 7.4951 +/- 0.0063
Std Dev: 0.2623 +/- 0.0065	Std Dev: 0.2634 +/- 0.0027	Std Dev: 0.1818 +/- 0.0044



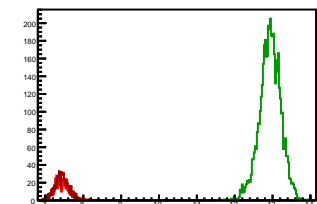
Cycle 4, NegHel

Entries: 1187	Entries: 4784	Entries: 1966
Mean: 7.4610 +/- 0.0051	Mean: 12.9533 +/- 0.0044	Mean: 7.3633 +/- 0.0040
Std Dev: 0.1767 +/- 0.0036	Std Dev: 0.3018 +/- 0.0031	Std Dev: 0.1754 +/- 0.0028



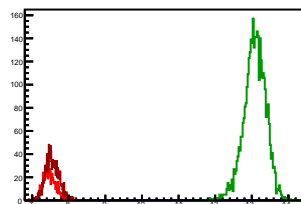
Cycle 5, NegHel

Entries: 722	Entries: 4770	Entries: 837
Mean: 7.4274 +/- 0.0071	Mean: 12.9339 +/- 0.0041	Mean: 7.4394 +/- 0.0064
Std Dev: 0.1907 +/- 0.0050	Std Dev: 0.2798 +/- 0.0029	Std Dev: 0.1839 +/- 0.0045



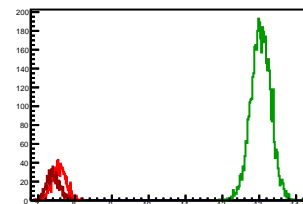
Cycle 6, NegHel

Entries: 810	Entries: 3722	Entries: 1286
Mean: 7.4710 +/- 0.0061	Mean: 13.0820 +/- 0.0049	Mean: 7.5506 +/- 0.0051
Std Dev: 0.1723 +/- 0.0043	Std Dev: 0.3001 +/- 0.0035	Std Dev: 0.1843 +/- 0.0036



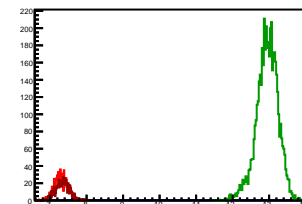
Cycle 7, NegHel

Entries: 1239	Entries: 4619	Entries: 946
Mean: 7.5700 +/- 0.0052	Mean: 13.0404 +/- 0.0040	Mean: 7.4115 +/- 0.0057
Std Dev: 0.1822 +/- 0.0037	Std Dev: 0.2689 +/- 0.0028	Std Dev: 0.1738 +/- 0.0040



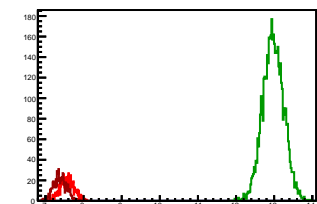
Cycle 8, NegHel

Entries: 920	Entries: 4819	Entries: 747
Mean: 7.3073 +/- 0.0059	Mean: 12.9466 +/- 0.0043	Mean: 7.3378 +/- 0.0066
Std Dev: 0.1795 +/- 0.0042	Std Dev: 0.2974 +/- 0.0030	Std Dev: 0.1803 +/- 0.0047



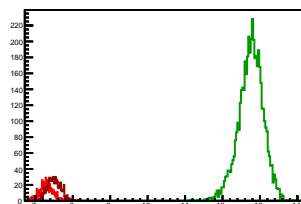
Cycle 9, NegHel

Entries: 823	Entries: 4764	Entries: 736
Mean: 7.5689 +/- 0.0064	Mean: 12.9743 +/- 0.0040	Mean: 7.3823 +/- 0.0064
Std Dev: 0.1826 +/- 0.0045	Std Dev: 0.2747 +/- 0.0028	Std Dev: 0.1741 +/- 0.0045



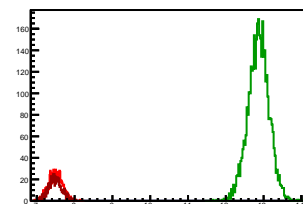
Cycle 10, NegHel

Entries: 738	Entries: 4798	Entries: 872
Mean: 7.2885 +/- 0.0065	Mean: 12.7559 +/- 0.0048	Mean: 7.4980 +/- 0.0061
Std Dev: 0.1760 +/- 0.0046	Std Dev: 0.3310 +/- 0.0034	Std Dev: 0.1792 +/- 0.0043



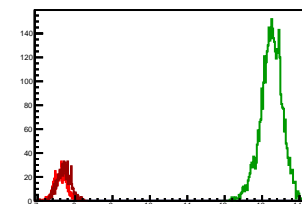
Cycle 11, NegHel

Entries: 828	Entries: 3806	Entries: 749
Mean: 7.4961 +/- 0.0061	Mean: 12.8646 +/- 0.0045	Mean: 7.4840 +/- 0.0065
Std Dev: 0.1750 +/- 0.0043	Std Dev: 0.2788 +/- 0.0032	Std Dev: 0.1768 +/- 0.0046



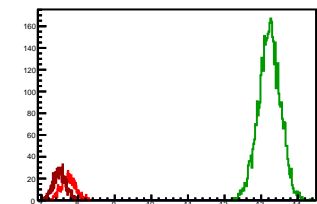
Cycle 12, NegHel

Entries: 747	Entries: 4068	Entries: 869
Mean: 7.6143 +/- 0.0062	Mean: 13.2469 +/- 0.0046	Mean: 7.6996 +/- 0.0060
Std Dev: 0.1701 +/- 0.0044	Std Dev: 0.2949 +/- 0.0033	Std Dev: 0.1772 +/- 0.0043



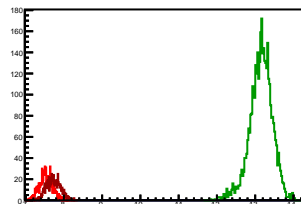
Cycle 13, NegHel

Entries: 829	Entries: 4717	Entries: 871
Mean: 7.7352 +/- 0.0067	Mean: 13.2256 +/- 0.0044	Mean: 7.4934 +/- 0.0060
Std Dev: 0.1930 +/- 0.0047	Std Dev: 0.2999 +/- 0.0031	Std Dev: 0.1781 +/- 0.0043



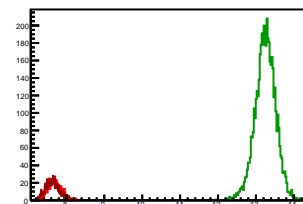
Cycle 14, NegHel

Entries: 836	Entries: 3803	Entries: 767
Mean: 7.5330 +/- 0.0061	Mean: 13.1479 +/- 0.0049	Mean: 7.7292 +/- 0.0065
Std Dev: 0.1750 +/- 0.0043	Std Dev: 0.3002 +/- 0.0034	Std Dev: 0.1813 +/- 0.0046



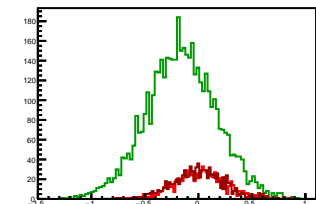
Cycle 15, NegHel

Entries: 756	Entries: 4740	Entries: 818
Mean: 7.6924 +/- 0.0064	Mean: 13.2500 +/- 0.0039	Mean: 7.6304 +/- 0.0063
Std Dev: 0.1755 +/- 0.0045	Std Dev: 0.2713 +/- 0.0028	Std Dev: 0.1805 +/- 0.0045



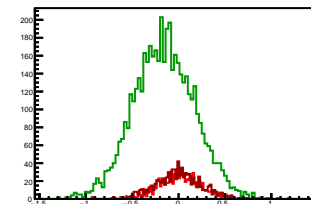
Cycle 1, Diffs

Entries: 801	Entries: 4709	Entries: 932
Mean: 0.0183 +/- 0.0063	Mean: -0.1612 +/- 0.0048	Mean: -0.0002 +/- 0.0078
Std Dev: 0.2355 +/- 0.0059	Std Dev: 0.3266 +/- 0.0034	Std Dev: 0.2382 +/- 0.0055



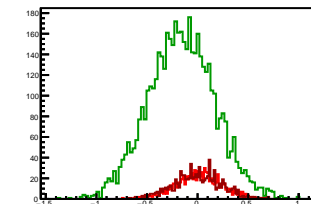
Cycle 2, Diffs

Entries: 864	Entries: 4837	Entries: 832
Mean: 0.0069 +/- 0.0078	Mean: -0.1591 +/- 0.0048	Mean: -0.0010 +/- 0.0084
Std Dev: 0.2301 +/- 0.0055	Std Dev: 0.3312 +/- 0.0034	Std Dev: 0.2423 +/- 0.0059



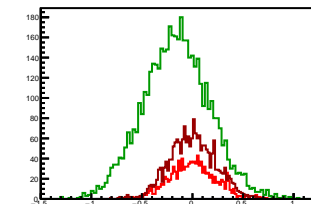
Cycle 3, Diffs

Entries: 805	Entries: 4832	Entries: 836
Mean: 0.0087 +/- 0.0078	Mean: -0.1592 +/- 0.0047	Mean: -0.0010 +/- 0.0081
Std Dev: 0.2215 +/- 0.0055	Std Dev: 0.3264 +/- 0.0033	Std Dev: 0.2341 +/- 0.0057



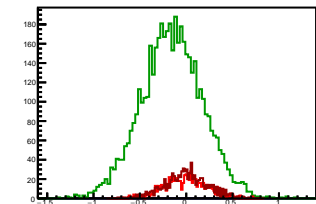
Cycle 4, Diffs

Entries: 1187	Entries: 4784	Entries: 1966
Mean: -0.0006 +/- 0.0066	Mean: -0.1604 +/- 0.0048	Mean: 0.0021 +/- 0.0051
Std Dev: 0.2285 +/- 0.0047	Std Dev: 0.3295 +/- 0.0034	Std Dev: 0.2265 +/- 0.0036



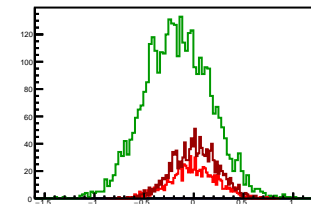
Cycle 5, Diffs

Entries: 722	Entries: 4770	Entries: 837
Mean: -0.0046 +/- 0.0068	Mean: -0.1563 +/- 0.0048	Mean: -0.0036 +/- 0.0080
Std Dev: 0.2363 +/- 0.0062	Std Dev: 0.3321 +/- 0.0034	Std Dev: 0.2317 +/- 0.0057



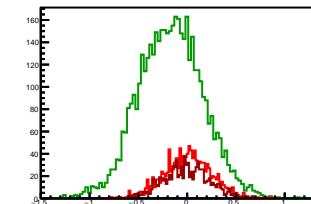
Cycle 6, Diffs

Entries: 810	Entries: 3722	Entries: 1286
Mean: -0.0093 +/- 0.0063	Mean: -0.1627 +/- 0.0054	Mean: 0.0126 +/- 0.0063
Std Dev: 0.2350 +/- 0.0058	Std Dev: 0.3285 +/- 0.0038	Std Dev: 0.2242 +/- 0.0044



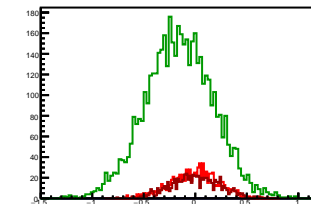
Cycle 7, Diffs

Entries: 1239	Entries: 4619	Entries: 946
Mean: 0.0025 +/- 0.0067	Mean: -0.1661 +/- 0.0048	Mean: -0.0099 +/- 0.0075
Std Dev: 0.2365 +/- 0.0048	Std Dev: 0.3286 +/- 0.0034	Std Dev: 0.2301 +/- 0.0053



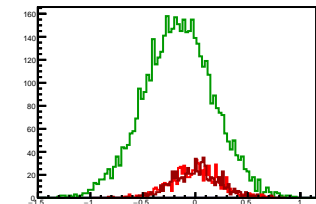
Cycle 8, Diffs

Entries: 920	Entries: 4819	Entries: 747
Mean: -0.0074 +/- 0.0076	Mean: -0.1545 +/- 0.0047	Mean: -0.0037 +/- 0.0085
Std Dev: 0.2295 +/- 0.0054	Std Dev: 0.3277 +/- 0.0033	Std Dev: 0.2314 +/- 0.0060



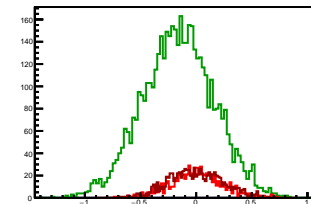
Cycle 9, Diffs

Entries: 823	Entries: 4764	Entries: 736
Mean: -0.0019 +/- 0.0080	Mean: -0.1609 +/- 0.0048	Mean: 0.0070 +/- 0.0083
Std Dev: 0.2302 +/- 0.0057	Std Dev: 0.3318 +/- 0.0034	Std Dev: 0.2255 +/- 0.0059



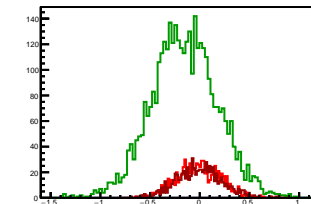
Cycle 10, Diffs

Entries: 738	Entries: 4798	Entries: 872
Mean: 0.0038 +/- 0.0086	Mean: -0.1606 +/- 0.0046	Mean: -0.0059 +/- 0.0080
Std Dev: 0.2345 +/- 0.0061	Std Dev: 0.3201 +/- 0.0033	Std Dev: 0.2376 +/- 0.0057



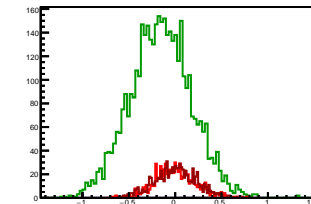
Cycle 11, Diffs

Entries: 828	Entries: 3806	Entries: 749
Mean: -0.0132 +/- 0.0077	Mean: -0.1552 +/- 0.0054	Mean: -0.0071 +/- 0.0082
Std Dev: 0.2229 +/- 0.0055	Std Dev: 0.3325 +/- 0.0038	Std Dev: 0.2242 +/- 0.0058



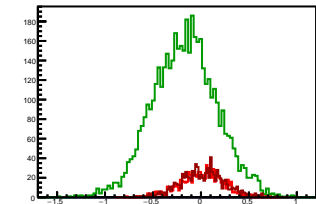
Cycle 12, Diffs

Entries: 747	Entries: 4068	Entries: 869
Mean: -0.0032 +/- 0.0080	Mean: -0.1566 +/- 0.0052	Mean: 0.0020 +/- 0.0076
Std Dev: 0.2190 +/- 0.0057	Std Dev: 0.3300 +/- 0.0037	Std Dev: 0.2233 +/- 0.0054



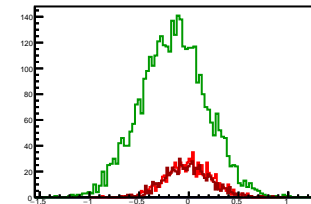
Cycle 13, Diffs

Entries: 829	Entries: 4717	Entries: 871
Mean: 0.0040 +/- 0.0080	Mean: -0.1693 +/- 0.0049	Mean: 0.0169 +/- 0.0078
Std Dev: 0.2294 +/- 0.0056	Std Dev: 0.3347 +/- 0.0034	Std Dev: 0.2301 +/- 0.0055



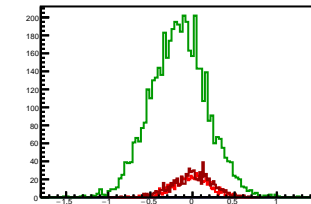
Cycle 14, Diffs

Entries: 836	Entries: 3803	Entries: 767
Mean: -0.0015 +/- 0.0079	Mean: -0.1555 +/- 0.0053	Mean: -0.0107 +/- 0.0082
Std Dev: 0.2275 +/- 0.0056	Std Dev: 0.3289 +/- 0.0038	Std Dev: 0.2267 +/- 0.0058



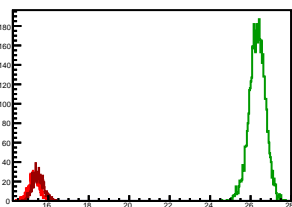
Cycle 15, Diffs

Entries: 756	Entries: 4740	Entries: 818
Mean: -0.0048 +/- 0.0080	Mean: -0.1624 +/- 0.0048	Mean: 0.0028 +/- 0.0080
Std Dev: 0.2204 +/- 0.0057	Std Dev: 0.3313 +/- 0.0034	Std Dev: 0.2294 +/- 0.0057



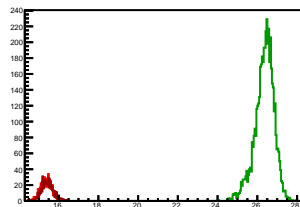
Cycle 1, Sums

Entries: 801	Entries: 4709	Entries: 932
Mean: 15.2981 +/- 0.0097	Mean: 26.3333 +/- 0.0058	Mean: 15.4938 +/- 0.0087
Std Dev: 0.2749 +/- 0.0069	Std Dev: 0.3990 +/- 0.0041	Std Dev: 0.2644 +/- 0.0061



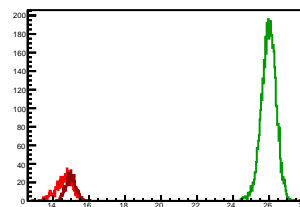
Cycle 2, Sums

Entries: 864	Entries: 4837	Entries: 832
Mean: 15.3813 +/- 0.0095	Mean: 26.3592 +/- 0.0069	Mean: 15.4363 +/- 0.0098
Std Dev: 0.2793 +/- 0.0067	Std Dev: 0.4820 +/- 0.0049	Std Dev: 0.2839 +/- 0.0070



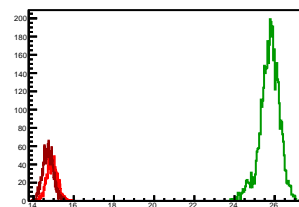
Cycle 3, Sums

Entries: 805	Entries: 4832	Entries: 836
Mean: 14.6133 +/- 0.0162	Mean: 25.9772 +/- 0.0059	Mean: 14.9891 +/- 0.0096
Std Dev: 0.4666 +/- 0.0115	Std Dev: 0.4105 +/- 0.0042	Std Dev: 0.2769 +/- 0.0068



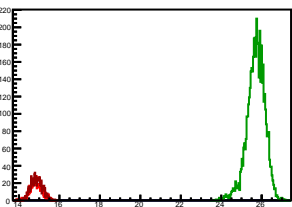
Cycle 4, Sums

Entries: 1187	Entries: 4784	Entries: 1966
Mean: 14.9214 +/- 0.0080	Mean: 25.7462 +/- 0.0071	Mean: 14.7288 +/- 0.0060
Std Dev: 0.2751 +/- 0.0056	Std Dev: 0.4901 +/- 0.0050	Std Dev: 0.2859 +/- 0.0042



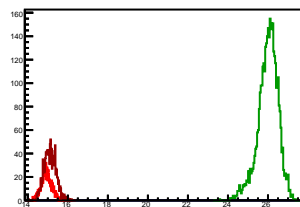
Cycle 5, Sums

Entries: 722	Entries: 4770	Entries: 837
Mean: 14.8503 +/- 0.0108	Mean: 25.7116 +/- 0.0064	Mean: 14.8751 +/- 0.0097
Std Dev: 0.2898 +/- 0.0076	Std Dev: 0.4452 +/- 0.0046	Std Dev: 0.2817 +/- 0.0069



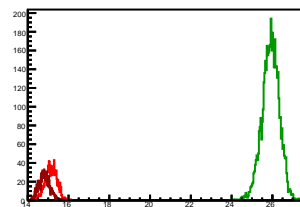
Cycle 6, Sums

Entries: 810	Entries: 3722	Entries: 1286
Mean: 14.9326 +/- 0.0092	Mean: 26.0012 +/- 0.0083	Mean: 15.1137 +/- 0.0082
Std Dev: 0.2625 +/- 0.0065	Std Dev: 0.5034 +/- 0.0058	Std Dev: 0.2940 +/- 0.0058



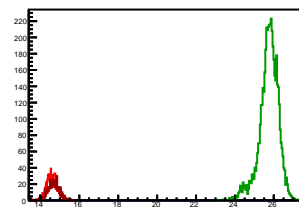
Cycle 7, Sums

Entries: 1239	Entries: 4619	Entries: 946
Mean: 15.1425 +/- 0.0080	Mean: 25.9148 +/- 0.0062	Mean: 14.8131 +/- 0.0087
Std Dev: 0.2895 +/- 0.0056	Std Dev: 0.4238 +/- 0.0044	Std Dev: 0.2674 +/- 0.0061



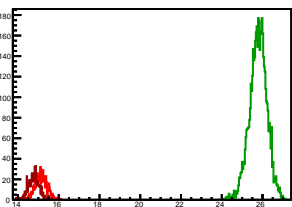
Cycle 8, Sums

Entries: 920	Entries: 4819	Entries: 747
Mean: 14.6072 +/- 0.0089	Mean: 25.7386 +/- 0.0071	Mean: 14.6720 +/- 0.0100
Std Dev: 0.2692 +/- 0.0063	Std Dev: 0.4951 +/- 0.0050	Std Dev: 0.2740 +/- 0.0071



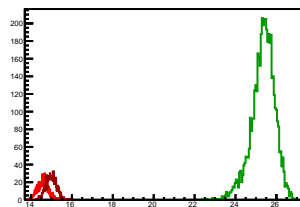
Cycle 9, Sums

Entries: 823	Entries: 4764	Entries: 736
Mean: 15.1359 +/- 0.0099	Mean: 25.7878 +/- 0.0062	Mean: 14.7716 +/- 0.0098
Std Dev: 0.2851 +/- 0.0070	Std Dev: 0.4271 +/- 0.0044	Std Dev: 0.2669 +/- 0.0070



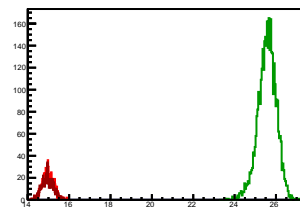
Cycle 10, Sums

Entries: 738	Entries: 4798	Entries: 872
Mean: 14.5809 +/- 0.0101	Mean: 25.3511 +/- 0.0083	Mean: 14.9901 +/- 0.0088
Std Dev: 0.2741 +/- 0.0071	Std Dev: 0.5723 +/- 0.0058	Std Dev: 0.2589 +/- 0.0062



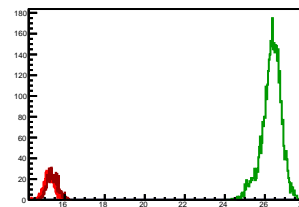
Cycle 11, Sums

Entries: 828	Entries: 3806	Entries: 749
Mean: 14.9790 +/- 0.0091	Mean: 25.5741 +/- 0.0072	Mean: 14.9609 +/- 0.0105
Std Dev: 0.2618 +/- 0.0064	Std Dev: 0.4437 +/- 0.0051	Std Dev: 0.2862 +/- 0.0074



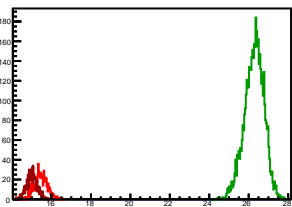
Cycle 12, Sums

Entries: 747	Entries: 4068	Entries: 869
Mean: 15.2253 +/- 0.0096	Mean: 26.3371 +/- 0.0077	Mean: 15.4012 +/- 0.0093
Std Dev: 0.2633 +/- 0.0068	Std Dev: 0.4885 +/- 0.0054	Std Dev: 0.2731 +/- 0.0066



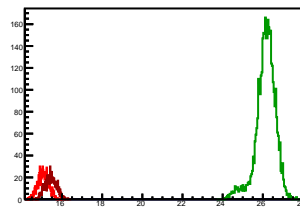
Cycle 13, Sums

Entries: 829	Entries: 4717	Entries: 871
Mean: 15.4744 +/- 0.0112	Mean: 26.2819 +/- 0.0072	Mean: 15.0038 +/- 0.0093
Std Dev: 0.3214 +/- 0.0079	Std Dev: 0.4926 +/- 0.0051	Std Dev: 0.2736 +/- 0.0066



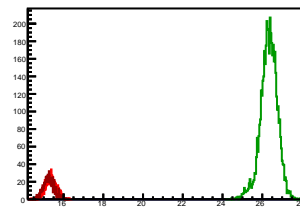
Cycle 14, Sums

Entries: 836	Entries: 3803	Entries: 767
Mean: 15.0644 +/- 0.0093	Mean: 26.1403 +/- 0.0081	Mean: 15.4478 +/- 0.0101
Std Dev: 0.2691 +/- 0.0066	Std Dev: 0.4969 +/- 0.0057	Std Dev: 0.2808 +/- 0.0072



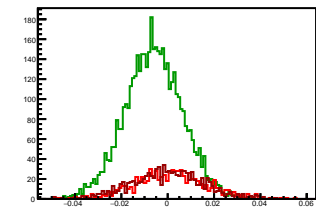
Cycle 15, Sums

Entries: 756	Entries: 4740	Entries: 818
Mean: 15.3800 +/- 0.0101	Mean: 26.3377 +/- 0.0062	Mean: 15.2636 +/- 0.0098
Std Dev: 0.2773 +/- 0.0071	Std Dev: 0.4255 +/- 0.0044	Std Dev: 0.2791 +/- 0.0069



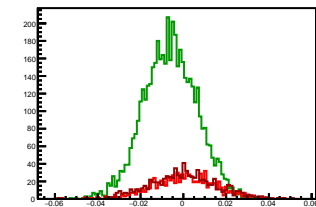
Cycle 1, Asyms

Entries: 801	Entries: 4709	Entries: 932
Mean: 0.0012 +/- 0.0005	Mean: -0.0061 +/- 0.0002	Mean: -0.0000 +/- 0.0005
Std Dev: 0.0154 +/- 0.0004	Std Dev: 0.0124 +/- 0.0001	Std Dev: 0.0153 +/- 0.0004



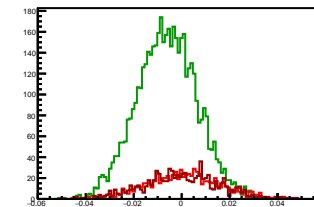
Cycle 2, Asyms

Entries: 864	Entries: 4837	Entries: 832
Mean: 0.0006 +/- 0.0005	Mean: -0.0060 +/- 0.0002	Mean: -0.0001 +/- 0.0005
Std Dev: 0.0149 +/- 0.0004	Std Dev: 0.0126 +/- 0.0001	Std Dev: 0.0157 +/- 0.0004



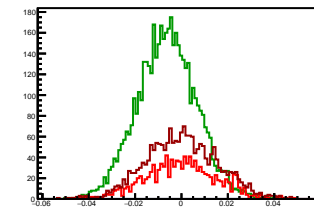
Cycle 3, Asyms

Entries: 805	Entries: 4832	Entries: 836
Mean: 0.0006 +/- 0.0005	Mean: -0.0061 +/- 0.0002	Mean: -0.0001 +/- 0.0005
Std Dev: 0.0151 +/- 0.0004	Std Dev: 0.0126 +/- 0.0001	Std Dev: 0.0156 +/- 0.0004



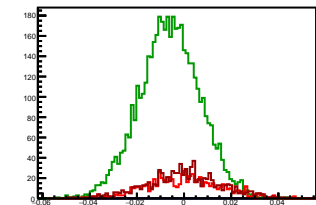
Cycle 4, Asyms

Entries: 1187	Entries: 4784	Entries: 1966
Mean: -0.0000 +/- 0.0004	Mean: -0.0062 +/- 0.0002	Mean: 0.0001 +/- 0.0003
Std Dev: 0.0153 +/- 0.0003	Std Dev: 0.0128 +/- 0.0001	Std Dev: 0.0153 +/- 0.0002



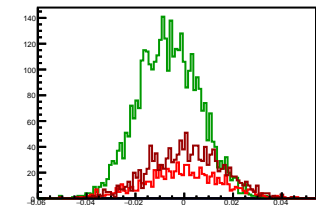
Cycle 5, Asyms

Entries: 722	Entries: 4770	Entries: 837
Mean: -0.0003 +/- 0.0006	Mean: -0.0061 +/- 0.0002	Mean: -0.0002 +/- 0.0005
Std Dev: 0.0159 +/- 0.0004	Std Dev: 0.0129 +/- 0.0001	Std Dev: 0.0155 +/- 0.0004



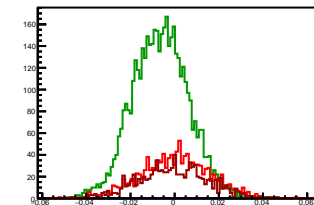
Cycle 6, Asyms

Entries: 810	Entries: 3722	Entries: 1286
Mean: -0.0006 +/- 0.0006	Mean: -0.0063 +/- 0.0002	Mean: 0.0008 +/- 0.0004
Std Dev: 0.0157 +/- 0.0004	Std Dev: 0.0126 +/- 0.0001	Std Dev: 0.0148 +/- 0.0003



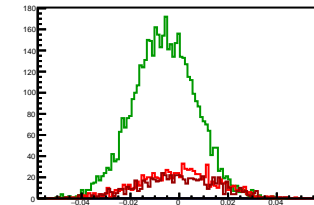
Cycle 7, Asyms

Entries: 1239	Entries: 4619	Entries: 946
Mean: 0.0002 +/- 0.0004	Mean: -0.0064 +/- 0.0002	Mean: -0.0007 +/- 0.0005
Std Dev: 0.0156 +/- 0.0003	Std Dev: 0.0127 +/- 0.0001	Std Dev: 0.0155 +/- 0.0004



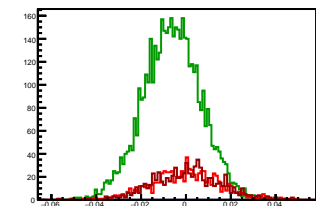
Cycle 8, Asyms

Entries: 920	Entries: 4819	Entries: 747
Mean: -0.0005 +/- 0.0005	Mean: -0.0060 +/- 0.0002	Mean: -0.0002 +/- 0.0006
Std Dev: 0.0157 +/- 0.0004	Std Dev: 0.0127 +/- 0.0001	Std Dev: 0.0158 +/- 0.0004



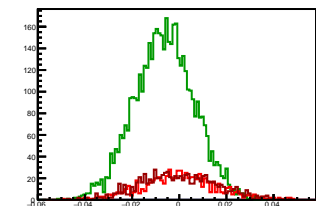
Cycle 9, Asyms

Entries: 823	Entries: 4764	Entries: 736
Mean: -0.0001 +/- 0.0005	Mean: -0.0062 +/- 0.0002	Mean: 0.0005 +/- 0.0006
Std Dev: 0.0152 +/- 0.0004	Std Dev: 0.0129 +/- 0.0001	Std Dev: 0.0152 +/- 0.0004



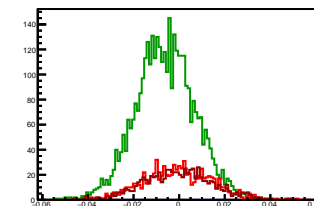
Cycle 10, Asyms

Entries: 738	Entries: 4798	Entries: 872
Mean: 0.0002 +/- 0.0006	Mean: -0.0063 +/- 0.0002	Mean: -0.0004 +/- 0.0005
Std Dev: 0.0160 +/- 0.0004	Std Dev: 0.0126 +/- 0.0001	Std Dev: 0.0158 +/- 0.0004



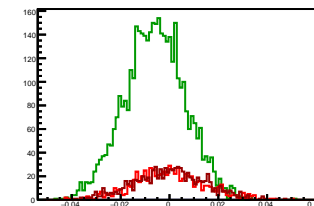
Cycle 11, Asyms

Entries: 828	Entries: 3806	Entries: 749
Mean: -0.0009 +/- 0.0005	Mean: -0.0061 +/- 0.0002	Mean: -0.0005 +/- 0.0005
Std Dev: 0.0149 +/- 0.0004	Std Dev: 0.0130 +/- 0.0001	Std Dev: 0.0149 +/- 0.0004



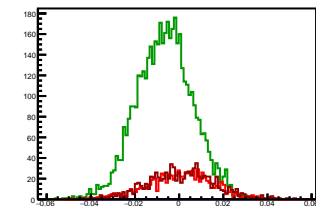
Cycle 12, Asyms

Entries: 747	Entries: 4068	Entries: 869
Mean: -0.0002 +/- 0.0005	Mean: -0.0059 +/- 0.0002	Mean: 0.0001 +/- 0.0005
Std Dev: 0.0144 +/- 0.0004	Std Dev: 0.0125 +/- 0.0001	Std Dev: 0.0145 +/- 0.0003



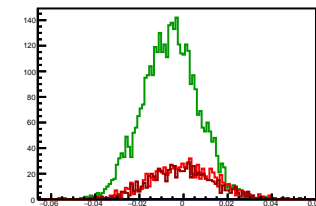
Cycle 13, Asyms

Entries: 829	Entries: 4717	Entries: 871
Mean: 0.0002 +/- 0.0005	Mean: -0.0064 +/- 0.0002	Mean: 0.0011 +/- 0.0005
Std Dev: 0.0148 +/- 0.0004	Std Dev: 0.0127 +/- 0.0001	Std Dev: 0.0153 +/- 0.0004



Cycle 14, Asyms

Entries: 836	Entries: 3803	Entries: 767
Mean: -0.0001 +/- 0.0005	Mean: -0.0059 +/- 0.0002	Mean: -0.0007 +/- 0.0005
Std Dev: 0.0151 +/- 0.0004	Std Dev: 0.0126 +/- 0.0001	Std Dev: 0.0146 +/- 0.0004



Cycle 15, Asyms

Entries: 756	Entries: 4740	Entries: 818
Mean: -0.0003 +/- 0.0005	Mean: -0.0062 +/- 0.0002	Mean: 0.0002 +/- 0.0005
Std Dev: 0.0143 +/- 0.0004	Std Dev: 0.0126 +/- 0.0001	Std Dev: 0.0150 +/- 0.0004

