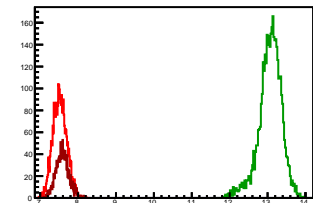


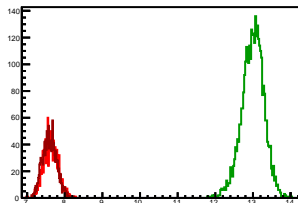
Cycle 1, PosHel

Entries: 2970	Entries: 4031	Entries: 1315
Mean: 7.5178 \pm 0.0034	Mean: 13.0653 \pm 0.0048	Mean: 7.5861 \pm 0.0047
Std Dev: 0.1834 \pm 0.0024	Std Dev: 0.3020 \pm 0.0034	Std Dev: 0.1702 \pm 0.0033



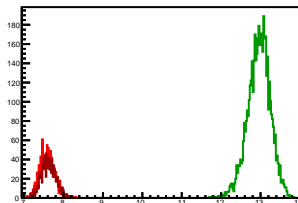
Cycle 2, PosHel

Entries: 1390	Entries: 3396	Entries: 1463
Mean: 7.6259 \pm 0.0051	Mean: 12.9960 \pm 0.0051	Mean: 7.5961 \pm 0.0049
Std Dev: 0.1896 \pm 0.0036	Std Dev: 0.2952 \pm 0.0036	Std Dev: 0.1866 \pm 0.0035



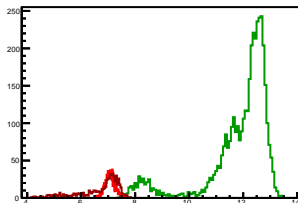
Cycle 3, PosHel

Entries: 1452	Entries: 4794	Entries: 1368
Mean: 7.5804 \pm 0.0048	Mean: 12.9585 \pm 0.0042	Mean: 7.6198 \pm 0.0049
Std Dev: 0.1815 \pm 0.0034	Std Dev: 0.2892 \pm 0.0030	Std Dev: 0.1799 \pm 0.0034



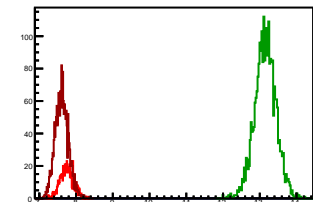
Cycle 4, PosHel

Entries: 1056	Entries: 4018	Entries: 643
Mean: 7.0752 \pm 0.0056	Mean: 11.8710 \pm 0.0188	Mean: 6.6858 \pm 0.0307
Std Dev: 0.1817 \pm 0.0040	Std Dev: 1.1765 \pm 0.0131	Std Dev: 0.7773 \pm 0.0217



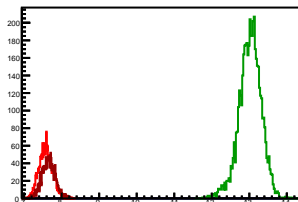
Cycle 5, PosHel

Entries: 667	Entries: 2622	Entries: 1839
Mean: 7.7459 \pm 0.0069	Mean: 13.1490 \pm 0.0057	Mean: 7.6130 \pm 0.0043
Std Dev: 0.1790 \pm 0.0049	Std Dev: 0.2912 \pm 0.0040	Std Dev: 0.1834 \pm 0.0030



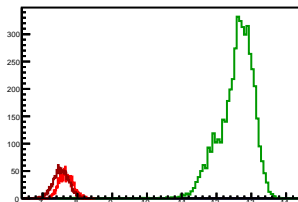
Cycle 6, PosHel

Entries: 1804	Entries: 4795	Entries: 1420
Mean: 7.5760 \pm 0.0042	Mean: 13.0193 \pm 0.0043	Mean: 7.6546 \pm 0.0047
Std Dev: 0.1782 \pm 0.0030	Std Dev: 0.2973 \pm 0.0030	Std Dev: 0.1768 \pm 0.0033



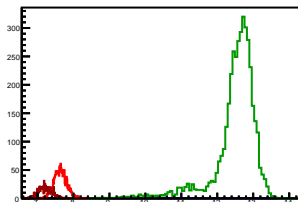
Cycle 7, PosHel

Entries: 1418	Entries: 4769	Entries: 1483
Mean: 7.6680 \pm 0.0053	Mean: 12.5680 \pm 0.0071	Mean: 7.5280 \pm 0.0058
Std Dev: 0.2002 \pm 0.0038	Std Dev: 0.4873 \pm 0.0050	Std Dev: 0.2249 \pm 0.0041



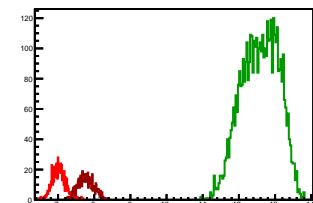
Cycle 8, PosHel

Entries: 1492	Entries: 4022	Entries: 685
Mean: 7.6308 \pm 0.0045	Mean: 12.4933 \pm 0.0097	Mean: 7.2109 \pm 0.0071
Std Dev: 0.1733 \pm 0.0032	Std Dev: 0.6174 \pm 0.0069	Std Dev: 0.1857 \pm 0.0050



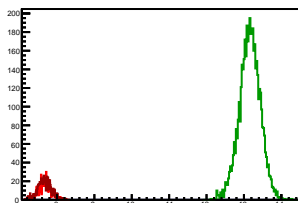
Cycle 9, PosHel

Entries: 659	Entries: 4722	Entries: 615
Mean: 7.0210 \pm 0.0071	Mean: 12.5826 \pm 0.0074	Mean: 7.7698 \pm 0.0086
Std Dev: 0.1830 \pm 0.0050	Std Dev: 0.5103 \pm 0.0053	Std Dev: 0.2138 \pm 0.0061



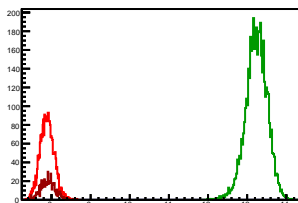
Cycle 10, PosHel

Entries: 616	Entries: 4740	Entries: 730
Mean: 7.6810 \pm 0.0070	Mean: 13.1573 \pm 0.0041	Mean: 7.6722 \pm 0.0066
Std Dev: 0.1726 \pm 0.0049	Std Dev: 0.2804 \pm 0.0029	Std Dev: 0.1781 \pm 0.0047



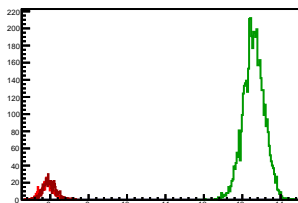
Cycle 11, PosHel

Entries: 2736	Entries: 4708	Entries: 634
Mean: 7.8864 \pm 0.0034	Mean: 13.2362 \pm 0.0040	Mean: 7.9125 \pm 0.0074
Std Dev: 0.1787 \pm 0.0024	Std Dev: 0.2777 \pm 0.0029	Std Dev: 0.1856 \pm 0.0052



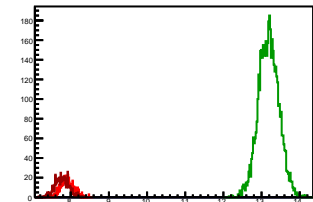
Cycle 12, PosHel

Entries: 625	Entries: 4763	Entries: 620
Mean: 7.9266 \pm 0.0067	Mean: 13.3001 \pm 0.0040	Mean: 7.9858 \pm 0.0070
Std Dev: 0.1672 \pm 0.0047	Std Dev: 0.2754 \pm 0.0028	Std Dev: 0.1735 \pm 0.0049



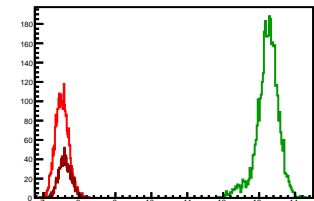
Cycle 13, PosHel

Entries: 615	Entries: 4727	Entries: 644
Mean: 7.9187 \pm 0.0070	Mean: 13.1881 \pm 0.0039	Mean: 7.7714 \pm 0.0073
Std Dev: 0.1730 \pm 0.0049	Std Dev: 0.2666 \pm 0.0027	Std Dev: 0.1844 \pm 0.0051



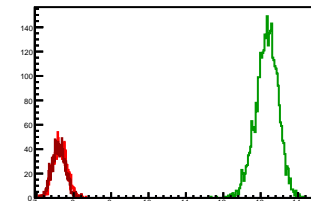
Cycle 1, NegHel

Entries: 2970	Entries: 4031	Entries: 1315
Mean: 7.5128 +/- 0.0034	Mean: 13.2305 +/- 0.0049	Mean: 7.5949 +/- 0.0047
Std Dev: 0.1853 +/- 0.0024	Std Dev: 0.3131 +/- 0.0035	Std Dev: 0.1717 +/- 0.0033



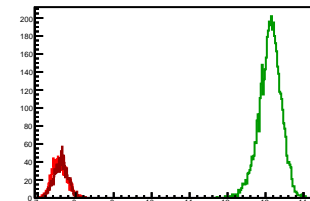
Cycle 2, NegHel

Entries: 1390	Entries: 3396	Entries: 1463
Mean: 7.6329 +/- 0.0050	Mean: 13.1652 +/- 0.0052	Mean: 7.6002 +/- 0.0046
Std Dev: 0.1866 +/- 0.0035	Std Dev: 0.3012 +/- 0.0037	Std Dev: 0.1773 +/- 0.0033



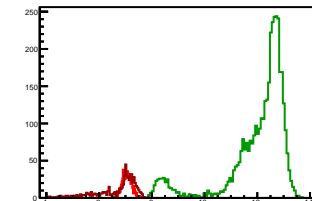
Cycle 3, NegHel

Entries: 1452	Entries: 4794	Entries: 1368
Mean: 7.5718 +/- 0.0049	Mean: 13.1195 +/- 0.0042	Mean: 7.6091 +/- 0.0049
Std Dev: 0.1864 +/- 0.0035	Std Dev: 0.2903 +/- 0.0030	Std Dev: 0.1802 +/- 0.0034



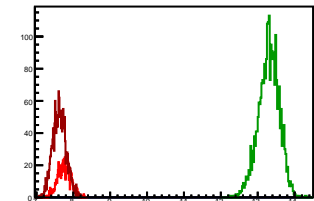
Cycle 4, NegHel

Entries: 1056	Entries: 4018	Entries: 643
Mean: 7.0638 +/- 0.0055	Mean: 12.0242 +/- 0.0185	Mean: 6.6820 +/- 0.0306
Std Dev: 0.1793 +/- 0.0039	Std Dev: 1.1724 +/- 0.0131	Std Dev: 0.7747 +/- 0.0216



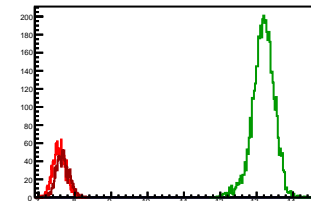
Cycle 5, NegHel

Entries: 667	Entries: 2622	Entries: 1839
Mean: 7.7533 +/- 0.0071	Mean: 13.3003 +/- 0.0055	Mean: 7.6258 +/- 0.0043
Std Dev: 0.1840 +/- 0.0050	Std Dev: 0.2834 +/- 0.0039	Std Dev: 0.1842 +/- 0.0030



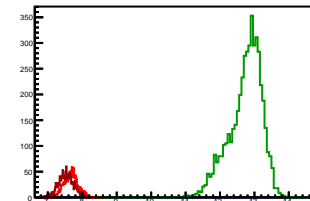
Cycle 6, NegHel

Entries: 1804	Entries: 4795	Entries: 1420
Mean: 7.5782 +/- 0.0042	Mean: 13.1822 +/- 0.0044	Mean: 7.6653 +/- 0.0047
Std Dev: 0.1788 +/- 0.0030	Std Dev: 0.3022 +/- 0.0031	Std Dev: 0.1783 +/- 0.0033



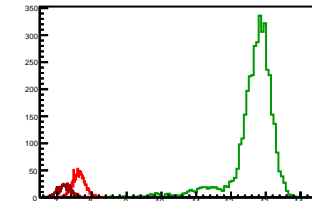
Cycle 7, NegHel

Entries: 1418	Entries: 4769	Entries: 1483
Mean: 7.6649 +/- 0.0054	Mean: 12.7325 +/- 0.0070	Mean: 7.5274 +/- 0.0057
Std Dev: 0.2021 +/- 0.0038	Std Dev: 0.4856 +/- 0.0050	Std Dev: 0.2211 +/- 0.0041



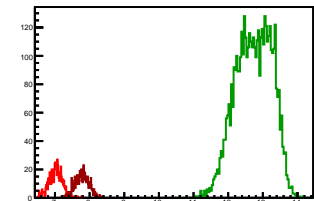
Cycle 8, NegHel

Entries: 1492	Entries: 4022	Entries: 685
Mean: 7.6318 +/- 0.0046	Mean: 12.6456 +/- 0.0099	Mean: 7.2078 +/- 0.0072
Std Dev: 0.1786 +/- 0.0033	Std Dev: 0.6306 +/- 0.0070	Std Dev: 0.1887 +/- 0.0051



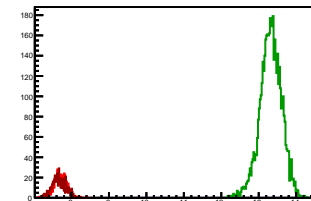
Cycle 9, NegHel

Entries: 659	Entries: 4722	Entries: 615
Mean: 7.0184 +/- 0.0074	Mean: 12.7356 +/- 0.0075	Mean: 7.7797 +/- 0.0080
Std Dev: 0.1911 +/- 0.0053	Std Dev: 0.5149 +/- 0.0053	Std Dev: 0.1974 +/- 0.0056



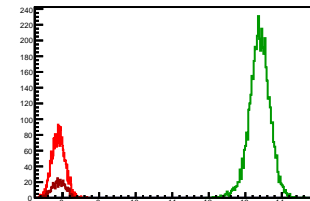
Cycle 10, NegHel

Entries: 616	Entries: 4740	Entries: 730
Mean: 7.6963 +/- 0.0069	Mean: 13.3201 +/- 0.0042	Mean: 7.6697 +/- 0.0066
Std Dev: 0.1721 +/- 0.0049	Std Dev: 0.2894 +/- 0.0030	Std Dev: 0.1784 +/- 0.0047



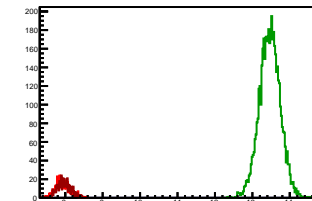
Cycle 11, NegHel

Entries: 2736	Entries: 4708	Entries: 634
Mean: 7.8877 +/- 0.0034	Mean: 13.3870 +/- 0.0041	Mean: 7.8976 +/- 0.0073
Std Dev: 0.1798 +/- 0.0024	Std Dev: 0.2830 +/- 0.0029	Std Dev: 0.1837 +/- 0.0052



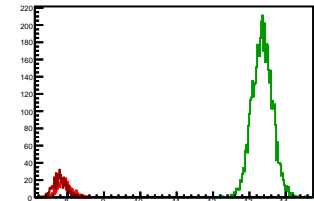
Cycle 12, NegHel

Entries: 625	Entries: 4763	Entries: 620
Mean: 7.9322 +/- 0.0075	Mean: 13.4623 +/- 0.0040	Mean: 7.9763 +/- 0.0074
Std Dev: 0.1887 +/- 0.0053	Std Dev: 0.2785 +/- 0.0029	Std Dev: 0.1831 +/- 0.0052



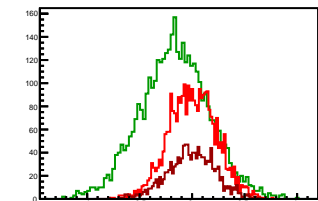
Cycle 13, NegHel

Entries: 615	Entries: 4727	Entries: 644
Mean: 7.9149 +/- 0.0075	Mean: 13.3526 +/- 0.0040	Mean: 7.8986 +/- 0.0071
Std Dev: 0.1870 +/- 0.0053	Std Dev: 0.2762 +/- 0.0028	Std Dev: 0.1797 +/- 0.0050



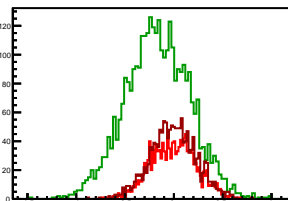
Cycle 1, Diffs

Entries: 2970	Entries: 4031	Entries: 1315
Mean: 0.0050 +/- 0.0042	Mean: -0.1653 +/- 0.0052	Mean: -0.0087 +/- 0.0062
Std Dev: 0.2277 +/- 0.0030	Std Dev: 0.3287 +/- 0.0037	Std Dev: 0.2258 +/- 0.0044



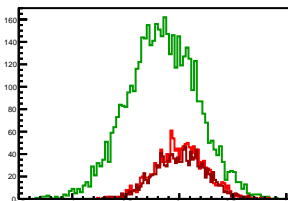
Cycle 2, Diffs

Entries: 1390	Entries: 3396	Entries: 1463
Mean: -0.0070 +/- 0.0062	Mean: -0.1691 +/- 0.0057	Mean: -0.0041 +/- 0.0060
Std Dev: 0.2322 +/- 0.0044	Std Dev: 0.3300 +/- 0.0040	Std Dev: 0.2310 +/- 0.0043



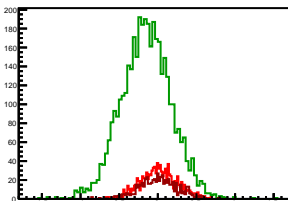
Cycle 3, Diffs

Entries: 1452	Entries: 4794	Entries: 1368
Mean: 0.0086 +/- 0.0061	Mean: -0.1610 +/- 0.0047	Mean: 0.0107 +/- 0.0063
Std Dev: 0.2321 +/- 0.0043	Std Dev: 0.3254 +/- 0.0033	Std Dev: 0.2333 +/- 0.0045



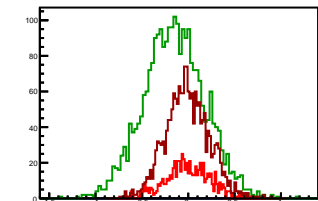
Cycle 4, Diffs

Entries: 1056	Entries: 4018	Entries: 643
Mean: 0.0114 +/- 0.0074	Mean: -0.1533 +/- 0.0051	Mean: 0.0038 +/- 0.0097
Std Dev: 0.2410 +/- 0.0052	Std Dev: 0.3240 +/- 0.0036	Std Dev: 0.2456 +/- 0.0068



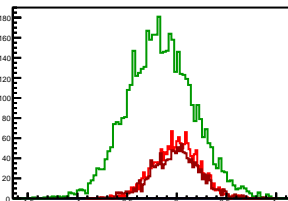
Cycle 5, Diffs

Entries: 667	Entries: 2622	Entries: 1839
Mean: -0.0074 +/- 0.0091	Mean: -0.1513 +/- 0.0064	Mean: -0.0128 +/- 0.0055
Std Dev: 0.2352 +/- 0.0064	Std Dev: 0.3289 +/- 0.0045	Std Dev: 0.2344 +/- 0.0039



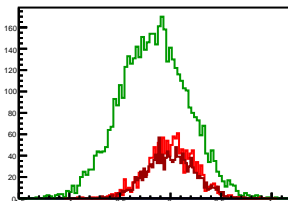
Cycle 6, Diffs

Entries: 1604	Entries: 4795	Entries: 1420
Mean: -0.0022 +/- 0.0054	Mean: -0.1629 +/- 0.0048	Mean: -0.0107 +/- 0.0064
Std Dev: 0.2275 +/- 0.0038	Std Dev: 0.3343 +/- 0.0034	Std Dev: 0.2393 +/- 0.0045



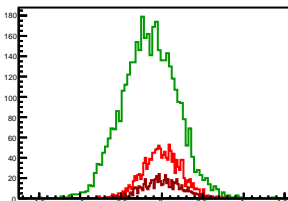
Cycle 7, Diffs

Entries: 1418	Entries: 4769	Entries: 1483
Mean: 0.0030 +/- 0.0063	Mean: -0.1645 +/- 0.0048	Mean: 0.0006 +/- 0.0060
Std Dev: 0.2358 +/- 0.0044	Std Dev: 0.3338 +/- 0.0034	Std Dev: 0.2324 +/- 0.0043



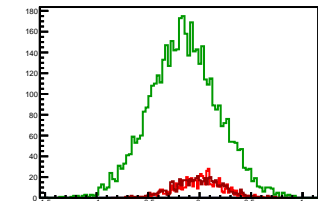
Cycle 8, Diffs

Entries: 1492	Entries: 4022	Entries: 685
Mean: -0.0010 +/- 0.0059	Mean: -0.1523 +/- 0.0052	Mean: 0.0031 +/- 0.0088
Std Dev: 0.2279 +/- 0.0042	Std Dev: 0.3290 +/- 0.0037	Std Dev: 0.2305 +/- 0.0062



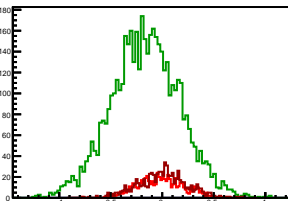
Cycle 9, Diffs

Entries: 659	Entries: 4722	Entries: 615
Mean: 0.0026 +/- 0.0085	Mean: -0.1530 +/- 0.0048	Mean: -0.0099 +/- 0.0096
Std Dev: 0.2191 +/- 0.0060	Std Dev: 0.3314 +/- 0.0034	Std Dev: 0.2369 +/- 0.0068



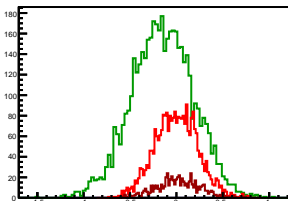
Cycle 10, Diffs

Entries: 616	Entries: 4740	Entries: 730
Mean: -0.0153 +/- 0.0091	Mean: -0.1628 +/- 0.0048	Mean: 0.0025 +/- 0.0088
Std Dev: 0.2256 +/- 0.0064	Std Dev: 0.3312 +/- 0.0034	Std Dev: 0.2391 +/- 0.0063



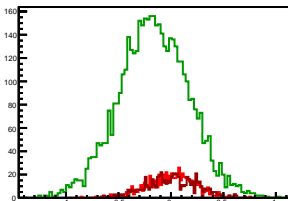
Cycle 11, Diffs

Entries: 2736	Entries: 4708	Entries: 634
Mean: -0.0013 +/- 0.0044	Mean: -0.1508 +/- 0.0049	Mean: 0.0149 +/- 0.0092
Std Dev: 0.2307 +/- 0.0031	Std Dev: 0.3332 +/- 0.0034	Std Dev: 0.2316 +/- 0.0065



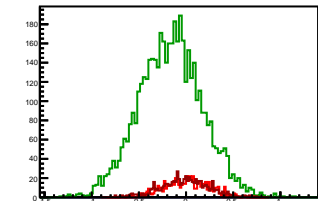
Cycle 12, Diffs

Entries: 625	Entries: 4763	Entries: 620
Mean: -0.0056 +/- 0.0093	Mean: -0.1622 +/- 0.0048	Mean: 0.0095 +/- 0.0097
Std Dev: 0.2325 +/- 0.0066	Std Dev: 0.3321 +/- 0.0034	Std Dev: 0.2424 +/- 0.0069



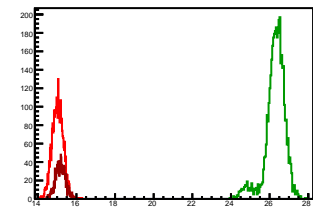
Cycle 13, Diffs

Entries: 615	Entries: 4727	Entries: 644
Mean: 0.0038 +/- 0.0097	Mean: -0.1645 +/- 0.0049	Mean: -0.0182 +/- 0.0100
Std Dev: 0.2396 +/- 0.0068	Std Dev: 0.3364 +/- 0.0035	Std Dev: 0.2534 +/- 0.0071



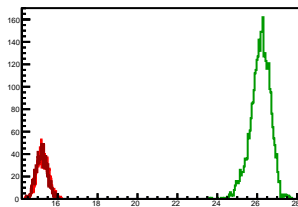
Cycle 1, Sums

Entries: 2970	Entries: 4031	Entries: 1315
Mean: 15.0306 +/- 0.0053	Mean: 26.2958 +/- 0.0082	Mean: 15.1810 +/- 0.0071
Std Dev: 0.2900 +/- 0.0038	Std Dev: 0.5200 +/- 0.0058	Std Dev: 0.2567 +/- 0.0050



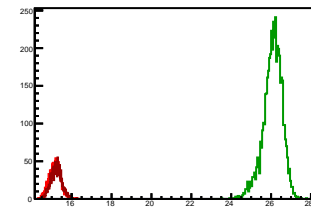
Cycle 2, Sums

Entries: 1390	Entries: 3396	Entries: 1463
Mean: 15.2587 +/- 0.0079	Mean: 26.1612 +/- 0.0085	Mean: 15.1964 +/- 0.0074
Std Dev: 0.2960 +/- 0.0056	Std Dev: 0.4968 +/- 0.0060	Std Dev: 0.2814 +/- 0.0052



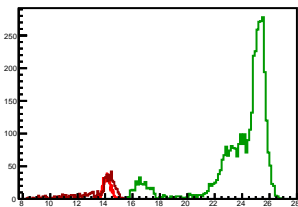
Cycle 3, Sums

Entries: 1452	Entries: 4794	Entries: 1368
Mean: 15.1523 +/- 0.0075	Mean: 26.0779 +/- 0.0069	Mean: 15.2290 +/- 0.0074
Std Dev: 0.2854 +/- 0.0053	Std Dev: 0.4795 +/- 0.0049	Std Dev: 0.2743 +/- 0.0052



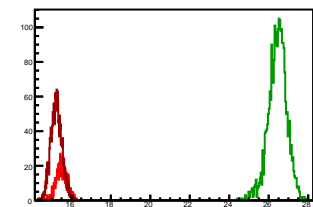
Cycle 4, Sums

Entries: 1056	Entries: 4018	Entries: 643
Mean: 14.1390 +/- 0.0083	Mean: 23.8952 +/- 0.0367	Mean: 13.3678 +/- 0.0604
Std Dev: 0.2688 +/- 0.0058	Std Dev: 2.3265 +/- 0.0260	Std Dev: 1.5325 +/- 0.0427



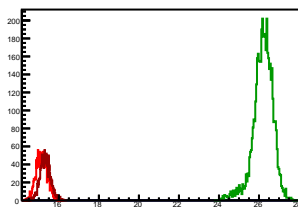
Cycle 5, Sums

Entries: 667	Entries: 2622	Entries: 1839
Mean: 15.4993 +/- 0.0107	Mean: 26.4493 +/- 0.0092	Mean: 15.2387 +/- 0.0066
Std Dev: 0.2767 +/- 0.0076	Std Dev: 0.4713 +/- 0.0065	Std Dev: 0.2832 +/- 0.0047



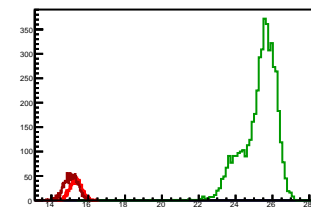
Cycle 6, Sums

Entries: 1804	Entries: 4795	Entries: 1420
Mean: 15.1542 +/- 0.0065	Mean: 26.2015 +/- 0.0072	Mean: 15.3199 +/- 0.0070
Std Dev: 0.2751 +/- 0.0046	Std Dev: 0.4976 +/- 0.0051	Std Dev: 0.2623 +/- 0.0049



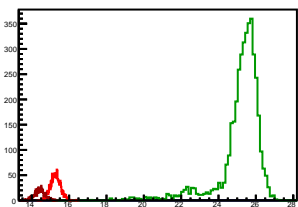
Cycle 7, Sums

Entries: 1418	Entries: 4769	Entries: 1483
Mean: 15.3329 +/- 0.0087	Mean: 25.3004 +/- 0.0132	Mean: 15.0555 +/- 0.0099
Std Dev: 0.3260 +/- 0.0061	Std Dev: 0.9138 +/- 0.0094	Std Dev: 0.3808 +/- 0.0070



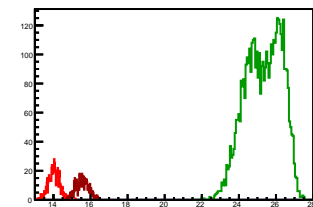
Cycle 8, Sums

Entries: 1492	Entries: 4022	Entries: 685
Mean: 15.2626 +/- 0.0069	Mean: 25.1389 +/- 0.0190	Mean: 14.4186 +/- 0.0113
Std Dev: 0.2682 +/- 0.0049	Std Dev: 1.2039 +/- 0.0134	Std Dev: 0.2949 +/- 0.0080



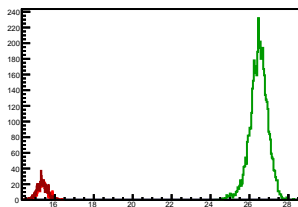
Cycle 9, Sums

Entries: 659	Entries: 4722	Entries: 615
Mean: 14.0394 +/- 0.0118	Mean: 25.3182 +/- 0.0141	Mean: 15.5496 +/- 0.0136
Std Dev: 0.3034 +/- 0.0084	Std Dev: 0.9702 +/- 0.0100	Std Dev: 0.3364 +/- 0.0096



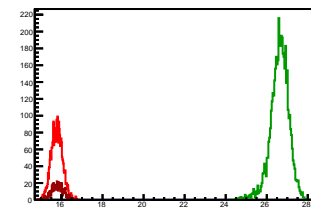
Cycle 10, Sums

Entries: 616	Entries: 4740	Entries: 730
Mean: 15.3773 +/- 0.0105	Mean: 26.4774 +/- 0.0067	Mean: 15.3419 +/- 0.0098
Std Dev: 0.2606 +/- 0.0074	Std Dev: 0.4638 +/- 0.0048	Std Dev: 0.2644 +/- 0.0069



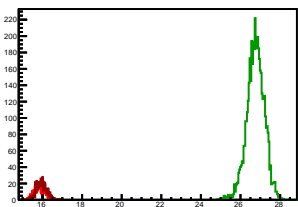
Cycle 11, Sums

Entries: 2736	Entries: 4708	Entries: 634
Mean: 15.7741 +/- 0.0052	Mean: 26.6232 +/- 0.0066	Mean: 15.8101 +/- 0.0114
Std Dev: 0.2744 +/- 0.0037	Std Dev: 0.4509 +/- 0.0046	Std Dev: 0.2877 +/- 0.0081



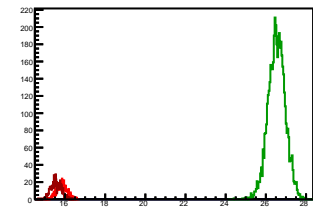
Cycle 12, Sums

Entries: 625	Entries: 4763	Entries: 620
Mean: 15.8588 +/- 0.0108	Mean: 26.7624 +/- 0.0064	Mean: 15.9621 +/- 0.0105
Std Dev: 0.2703 +/- 0.0076	Std Dev: 0.4434 +/- 0.0045	Std Dev: 0.2617 +/- 0.0074



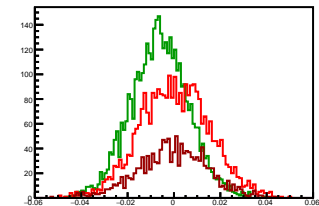
Cycle 13, Sums

Entries: 615	Entries: 4727	Entries: 644
Mean: 15.8336 +/- 0.0108	Mean: 26.5407 +/- 0.0062	Mean: 15.5609 +/- 0.0103
Std Dev: 0.2690 +/- 0.0077	Std Dev: 0.4261 +/- 0.0044	Std Dev: 0.2615 +/- 0.0073



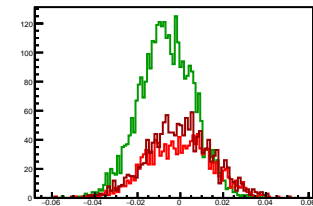
Cycle 1, Asyms

Entries: 2970	Entries: 4031	Entries: 1315
Mean: 0.0003 +/- 0.0003	Mean: -0.0063 +/- 0.0002	Mean: -0.0006 +/- 0.0004
Std Dev: 0.0151 +/- 0.0002	Std Dev: 0.0125 +/- 0.0001	Std Dev: 0.0149 +/- 0.0003



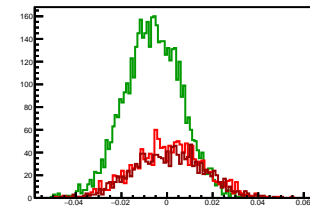
Cycle 2, Asyms

Entries: 1390	Entries: 3396	Entries: 1463
Mean: -0.0005 +/- 0.0004	Mean: -0.0065 +/- 0.0002	Mean: -0.0003 +/- 0.0004
Std Dev: 0.0152 +/- 0.0003	Std Dev: 0.0126 +/- 0.0002	Std Dev: 0.0152 +/- 0.0003



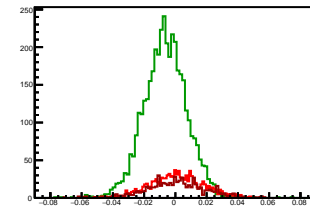
Cycle 3, Asyms

Entries: 1452	Entries: 4794	Entries: 1368
Mean: 0.0006 +/- 0.0004	Mean: -0.0062 +/- 0.0002	Mean: 0.0007 +/- 0.0004
Std Dev: 0.0153 +/- 0.0003	Std Dev: 0.0125 +/- 0.0001	Std Dev: 0.0153 +/- 0.0003



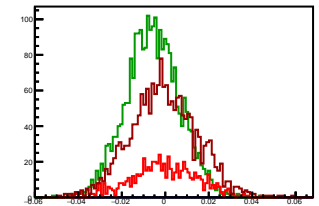
Cycle 4, Asyms

Entries: 1056	Entries: 4018	Entries: 643
Mean: 0.0008 +/- 0.0005	Mean: -0.0065 +/- 0.0002	Mean: 0.0003 +/- 0.0007
Std Dev: 0.0170 +/- 0.0004	Std Dev: 0.0139 +/- 0.0002	Std Dev: 0.0190 +/- 0.0005



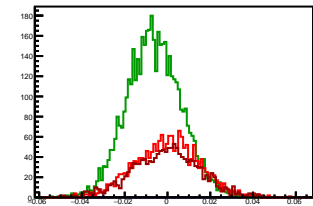
Cycle 5, Asyms

Entries: 667	Entries: 2622	Entries: 1839
Mean: -0.0005 +/- 0.0006	Mean: -0.0057 +/- 0.0002	Mean: -0.0008 +/- 0.0004
Std Dev: 0.0152 +/- 0.0004	Std Dev: 0.0124 +/- 0.0002	Std Dev: 0.0153 +/- 0.0003



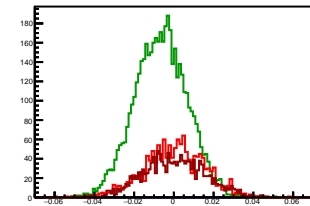
Cycle 6, Asyms

Entries: 1804	Entries: 4795	Entries: 1420
Mean: -0.0001 +/- 0.0004	Mean: -0.0062 +/- 0.0002	Mean: -0.0007 +/- 0.0004
Std Dev: 0.0150 +/- 0.0002	Std Dev: 0.0127 +/- 0.0001	Std Dev: 0.0156 +/- 0.0003



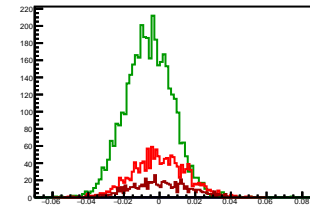
Cycle 7, Asyms

Entries: 1418	Entries: 4769	Entries: 1483
Mean: 0.0002 +/- 0.0004	Mean: -0.0065 +/- 0.0002	Mean: 0.0000 +/- 0.0004
Std Dev: 0.0154 +/- 0.0003	Std Dev: 0.0132 +/- 0.0001	Std Dev: 0.0154 +/- 0.0003



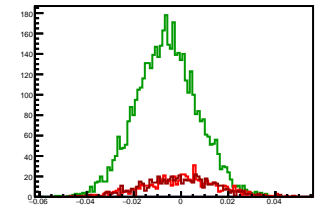
Cycle 8, Asyms

Entries: 1492	Entries: 4022	Entries: 685
Mean: -0.0001 +/- 0.0004	Mean: -0.0060 +/- 0.0002	Mean: 0.0002 +/- 0.0006
Std Dev: 0.0149 +/- 0.0003	Std Dev: 0.0132 +/- 0.0001	Std Dev: 0.0160 +/- 0.0004



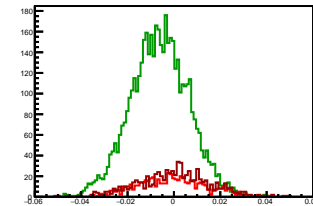
Cycle 9, Asyms

Entries: 659	Entries: 4722	Entries: 615
Mean: 0.0002 +/- 0.0006	Mean: -0.0060 +/- 0.0002	Mean: -0.0007 +/- 0.0006
Std Dev: 0.0156 +/- 0.0004	Std Dev: 0.0131 +/- 0.0001	Std Dev: 0.0152 +/- 0.0004



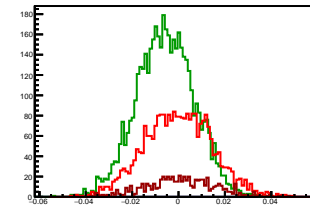
Cycle 10, Asyms

Entries: 616	Entries: 4740	Entries: 730
Mean: -0.0010 +/- 0.0006	Mean: -0.0061 +/- 0.0002	Mean: 0.0002 +/- 0.0006
Std Dev: 0.0146 +/- 0.0004	Std Dev: 0.0125 +/- 0.0001	Std Dev: 0.0156 +/- 0.0004



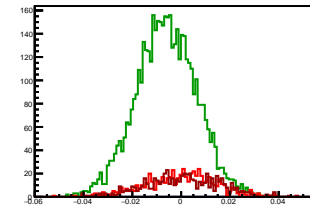
Cycle 11, Asyms

Entries: 2736	Entries: 4708	Entries: 634
Mean: -0.0001 +/- 0.0003	Mean: -0.0057 +/- 0.0002	Mean: 0.0009 +/- 0.0006
Std Dev: 0.0146 +/- 0.0002	Std Dev: 0.0125 +/- 0.0001	Std Dev: 0.0146 +/- 0.0004



Cycle 12, Asyms

Entries: 625	Entries: 4763	Entries: 620
Mean: -0.0003 +/- 0.0006	Mean: -0.0061 +/- 0.0002	Mean: 0.0006 +/- 0.0006
Std Dev: 0.0146 +/- 0.0004	Std Dev: 0.0124 +/- 0.0001	Std Dev: 0.0152 +/- 0.0004



Cycle 13, Asyms

Entries: 615	Entries: 4727	Entries: 644
Mean: 0.0003 +/- 0.0006	Mean: -0.0062 +/- 0.0002	Mean: -0.0012 +/- 0.0006
Std Dev: 0.0151 +/- 0.0004	Std Dev: 0.0127 +/- 0.0001	Std Dev: 0.0163 +/- 0.0005

