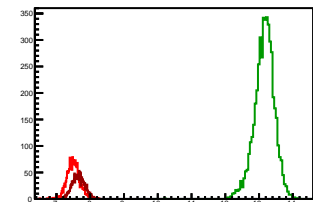


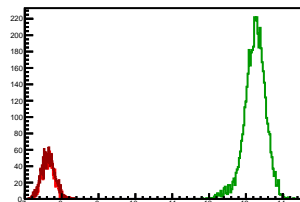
Cycle 1, PosHel

Entries: 1622	Entries: 4775	Entries: 1600
Mean: 7.4917 +/- 0.0048	Mean: 13.1568 +/- 0.0043	Mean: 7.6480 +/- 0.0046
Std Dev: 0.1926 +/- 0.0034	Std Dev: 0.2975 +/- 0.0030	Std Dev: 0.1840 +/- 0.0033



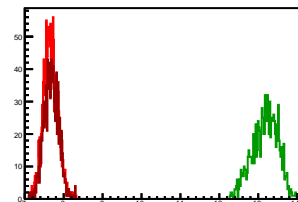
Cycle 2, PosHel

Entries: 1592	Entries: 4749	Entries: 1682
Mean: 7.6457 +/- 0.0043	Mean: 13.2450 +/- 0.0043	Mean: 7.6345 +/- 0.0044
Std Dev: 0.1730 +/- 0.0031	Std Dev: 0.2931 +/- 0.0030	Std Dev: 0.1819 +/- 0.0031



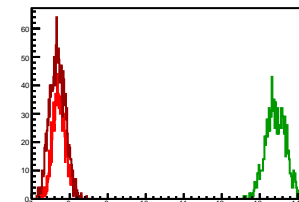
Cycle 3, PosHel

Entries: 1670	Entries: 1084	Entries: 1256
Mean: 7.6609 +/- 0.0044	Mean: 13.1777 +/- 0.0099	Mean: 7.6832 +/- 0.0053
Std Dev: 0.1810 +/- 0.0031	Std Dev: 0.3244 +/- 0.0070	Std Dev: 0.1870 +/- 0.0037



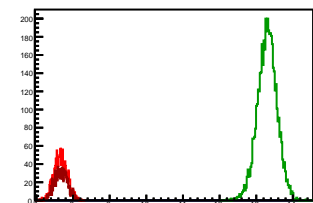
Cycle 4, PosHel

Entries: 1236	Entries: 1133	Entries: 1687
Mean: 7.7275 +/- 0.0051	Mean: 13.4196 +/- 0.0077	Mean: 7.6809 +/- 0.0050
Std Dev: 0.1802 +/- 0.0036	Std Dev: 0.2583 +/- 0.0054	Std Dev: 0.2043 +/- 0.0035



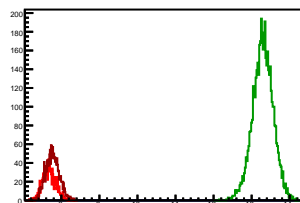
Cycle 5, PosHel

Entries: 1660	Entries: 4770	Entries: 1075
Mean: 7.6602 +/- 0.0044	Mean: 13.2988 +/- 0.0039	Mean: 7.6767 +/- 0.0054
Std Dev: 0.1801 +/- 0.0031	Std Dev: 0.2663 +/- 0.0027	Std Dev: 0.1778 +/- 0.0038



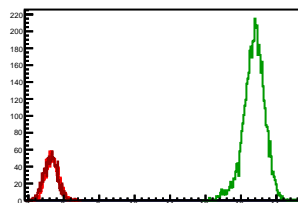
Cycle 6, PosHel

Entries: 1058	Entries: 4779	Entries: 1610
Mean: 7.6773 +/- 0.0053	Mean: 13.2938 +/- 0.0039	Mean: 7.7647 +/- 0.0045
Std Dev: 0.1739 +/- 0.0038	Std Dev: 0.2699 +/- 0.0028	Std Dev: 0.1793 +/- 0.0032



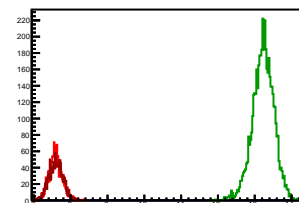
Cycle 7, PosHel

Entries: 1600	Entries: 4798	Entries: 1582
Mean: 7.6682 +/- 0.0046	Mean: 13.3707 +/- 0.0044	Mean: 7.6311 +/- 0.0048
Std Dev: 0.1857 +/- 0.0033	Std Dev: 0.3029 +/- 0.0031	Std Dev: 0.1924 +/- 0.0034



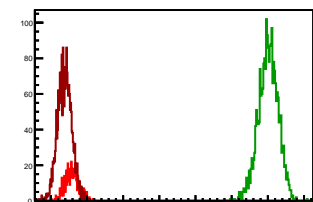
Cycle 8, PosHel

Entries: 1592	Entries: 4834	Entries: 1644
Mean: 7.5931 +/- 0.0044	Mean: 13.2297 +/- 0.0042	Mean: 7.5976 +/- 0.0046
Std Dev: 0.1775 +/- 0.0031	Std Dev: 0.2921 +/- 0.0030	Std Dev: 0.1882 +/- 0.0033



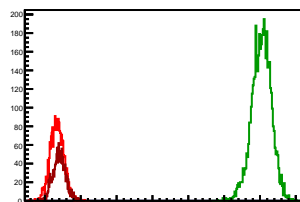
Cycle 9, PosHel

Entries: 574	Entries: 2344	Entries: 2182
Mean: 7.5785 +/- 0.0080	Mean: 13.0126 +/- 0.0056	Mean: 7.3850 +/- 0.0042
Std Dev: 0.1915 +/- 0.0057	Std Dev: 0.2718 +/- 0.0040	Std Dev: 0.1955 +/- 0.0030



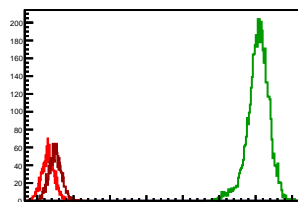
Cycle 10, PosHel

Entries: 2225	Entries: 4751	Entries: 1572
Mean: 7.3380 +/- 0.0040	Mean: 13.0414 +/- 0.0040	Mean: 7.4037 +/- 0.0047
Std Dev: 0.1876 +/- 0.0028	Std Dev: 0.2756 +/- 0.0028	Std Dev: 0.1847 +/- 0.0033



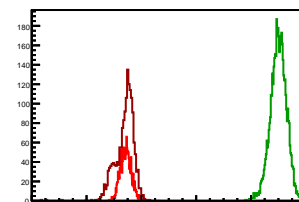
Cycle 11, PosHel

Entries: 1581	Entries: 4739	Entries: 1621
Mean: 7.2999 +/- 0.0045	Mean: 13.0705 +/- 0.0044	Mean: 7.4961 +/- 0.0043
Std Dev: 0.1783 +/- 0.0032	Std Dev: 0.3012 +/- 0.0031	Std Dev: 0.1748 +/- 0.0031



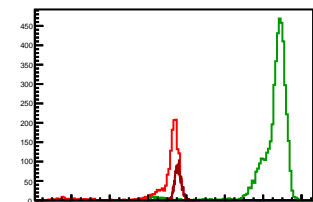
Cycle 12, PosHel

Entries: 1617	Entries: 4765	Entries: 1642
Mean: 7.4318 +/- 0.0049	Mean: 13.0006 +/- 0.0043	Mean: 7.3889 +/- 0.0084
Std Dev: 0.1964 +/- 0.0035	Std Dev: 0.2941 +/- 0.0030	Std Dev: 0.3403 +/- 0.0059



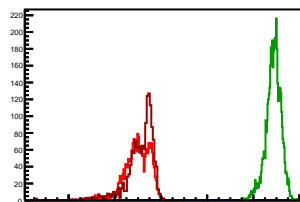
Cycle 13, PosHel

Entries: 1616	Entries: 4739	Entries: 2287
Mean: 6.9070 +/- 0.0321	Mean: 12.5204 +/- 0.0143	Mean: 7.5677 +/- 0.0037
Std Dev: 1.2905 +/- 0.0227	Std Dev: 0.9842 +/- 0.0101	Std Dev: 0.1769 +/- 0.0026



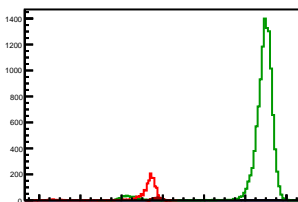
Cycle 14, PosHel

Entries: 2241	Entries: 4776	Entries: 1570
Mean: 6.9927 +/- 0.0110	Mean: 12.8696 +/- 0.0047	Mean: 7.0965 +/- 0.0156
Std Dev: 0.5188 +/- 0.0077	Std Dev: 0.3243 +/- 0.0033	Std Dev: 0.6162 +/- 0.0110



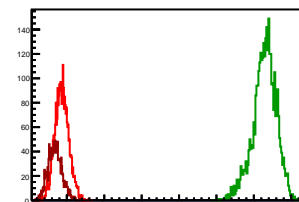
Cycle 15, PosHel

Entries: 1577	Entries: 11466	Entries: 600
Mean: 7.1770 +/- 0.0217	Mean: 12.7446 +/- 0.0106	Mean: 7.7349 +/- 0.0075
Std Dev: 0.8630 +/- 0.0154	Std Dev: 1.1392 +/- 0.0075	Std Dev: 0.1833 +/- 0.0053



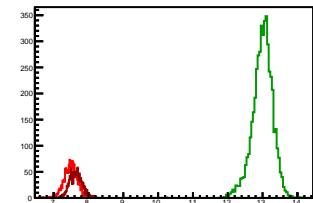
Cycle 16, PosHel

Entries: 2757	Entries: 3549	Entries: 1474
Mean: 7.8648 +/- 0.0036	Mean: 13.2897 +/- 0.0053	Mean: 7.6840 +/- 0.0049
Std Dev: 0.1865 +/- 0.0025	Std Dev: 0.3152 +/- 0.0037	Std Dev: 0.1874 +/- 0.0035



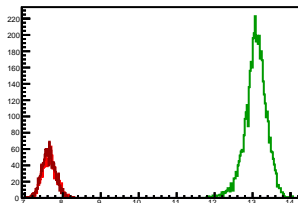
Cycle 1, NegHel

Entries: 1622	Entries: 4775	Entries: 1600
Mean: 7.4886 +/- 0.0048	Mean: 12.9984 +/- 0.0042	Mean: 7.6375 +/- 0.0045
Std Dev: 0.1950 +/- 0.0034	Std Dev: 0.2925 +/- 0.0030	Std Dev: 0.1810 +/- 0.0032



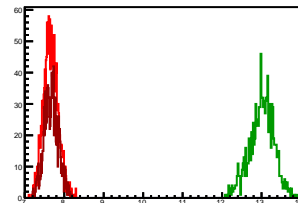
Cycle 2, NegHel

Entries: 1592	Entries: 4749	Entries: 1682
Mean: 7.6476 +/- 0.0045	Mean: 13.0864 +/- 0.0041	Mean: 7.6253 +/- 0.0044
Std Dev: 0.1803 +/- 0.0032	Std Dev: 0.2843 +/- 0.0029	Std Dev: 0.1796 +/- 0.0031



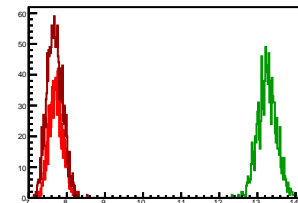
Cycle 3, NegHel

Entries: 1670	Entries: 1084	Entries: 1256
Mean: 7.6571 +/- 0.0045	Mean: 13.0066 +/- 0.0094	Mean: 7.6749 +/- 0.0051
Std Dev: 0.1831 +/- 0.0032	Std Dev: 0.3105 +/- 0.0067	Std Dev: 0.1796 +/- 0.0036



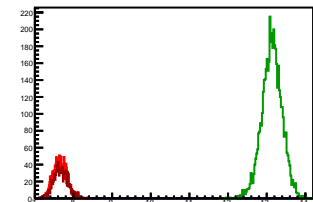
Cycle 4, NegHel

Entries: 1236	Entries: 1133	Entries: 1687
Mean: 7.7138 +/- 0.0051	Mean: 13.2592 +/- 0.0074	Mean: 7.6852 +/- 0.0049
Std Dev: 0.1796 +/- 0.0036	Std Dev: 0.2493 +/- 0.0052	Std Dev: 0.2006 +/- 0.0035



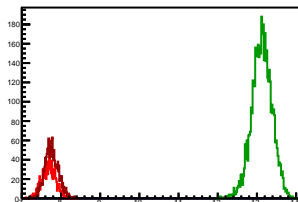
Cycle 5, NegHel

Entries: 1660	Entries: 4770	Entries: 1075
Mean: 7.6553 +/- 0.0044	Mean: 13.1333 +/- 0.0038	Mean: 7.6708 +/- 0.0056
Std Dev: 0.1799 +/- 0.0031	Std Dev: 0.2621 +/- 0.0027	Std Dev: 0.1824 +/- 0.0039



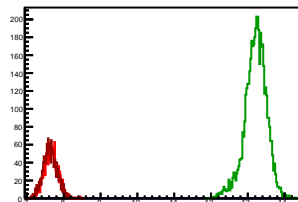
Cycle 6, NegHel

Entries: 1058	Entries: 4779	Entries: 1610
Mean: 7.6911 +/- 0.0056	Mean: 13.1259 +/- 0.0038	Mean: 7.7595 +/- 0.0043
Std Dev: 0.1805 +/- 0.0039	Std Dev: 0.2605 +/- 0.0027	Std Dev: 0.1740 +/- 0.0031



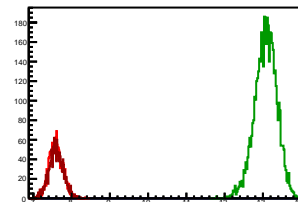
Cycle 7, NegHel

Entries: 1600	Entries: 4798	Entries: 1582
Mean: 7.6640 +/- 0.0047	Mean: 13.2131 +/- 0.0043	Mean: 7.6273 +/- 0.0048
Std Dev: 0.1878 +/- 0.0033	Std Dev: 0.2999 +/- 0.0031	Std Dev: 0.1894 +/- 0.0034



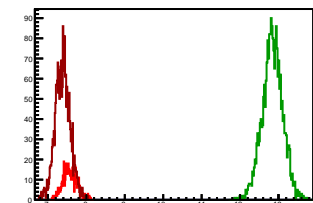
Cycle 8, NegHel

Entries: 1592	Entries: 4834	Entries: 1644
Mean: 7.5903 +/- 0.0045	Mean: 13.0726 +/- 0.0042	Mean: 7.5978 +/- 0.0047
Std Dev: 0.1787 +/- 0.0032	Std Dev: 0.2901 +/- 0.0030	Std Dev: 0.1887 +/- 0.0033



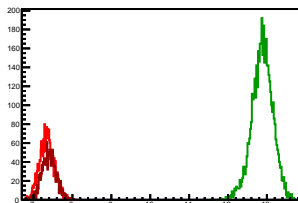
Cycle 9, NegHel

Entries: 574	Entries: 2344	Entries: 2182
Mean: 7.5658 +/- 0.0076	Mean: 12.8412 +/- 0.0055	Mean: 7.3840 +/- 0.0042
Std Dev: 0.1817 +/- 0.0054	Std Dev: 0.2669 +/- 0.0039	Std Dev: 0.1951 +/- 0.0030



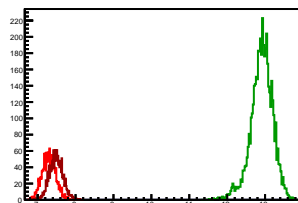
Cycle 10, NegHel

Entries: 2225	Entries: 4751	Entries: 1572
Mean: 7.3411 +/- 0.0039	Mean: 12.8800 +/- 0.0039	Mean: 7.4004 +/- 0.0046
Std Dev: 0.1855 +/- 0.0028	Std Dev: 0.2702 +/- 0.0028	Std Dev: 0.1833 +/- 0.0033



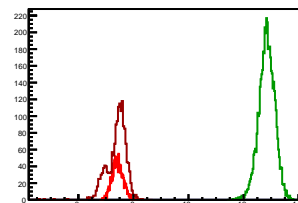
Cycle 11, NegHel

Entries: 1581	Entries: 4739	Entries: 1621
Mean: 7.2972 +/- 0.0045	Mean: 12.9093 +/- 0.0043	Mean: 7.4893 +/- 0.0044
Std Dev: 0.1801 +/- 0.0032	Std Dev: 0.2937 +/- 0.0030	Std Dev: 0.1767 +/- 0.0031



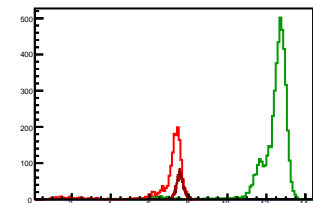
Cycle 12, NegHel

Entries: 1617	Entries: 4765	Entries: 1642
Mean: 7.4224 +/- 0.0048	Mean: 12.8413 +/- 0.0042	Mean: 7.3905 +/- 0.0086
Std Dev: 0.1936 +/- 0.0034	Std Dev: 0.2898 +/- 0.0030	Std Dev: 0.3487 +/- 0.0061



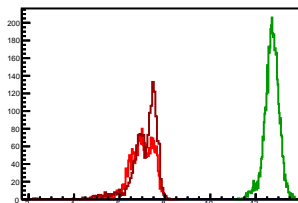
Cycle 13, NegHel

Entries: 1616	Entries: 4739	Entries: 2287
Mean: 6.9070 +/- 0.0323	Mean: 12.3645 +/- 0.0144	Mean: 7.5668 +/- 0.0038
Std Dev: 1.2987 +/- 0.0228	Std Dev: 0.9884 +/- 0.0102	Std Dev: 0.1823 +/- 0.0027



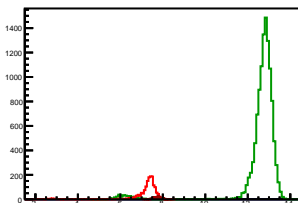
Cycle 14, NegHel

Entries: 2241	Entries: 4776	Entries: 1570
Mean: 6.9881 +/- 0.0109	Mean: 12.7060 +/- 0.0047	Mean: 7.0884 +/- 0.0156
Std Dev: 0.5136 +/- 0.0077	Std Dev: 0.3245 +/- 0.0033	Std Dev: 0.6189 +/- 0.0110



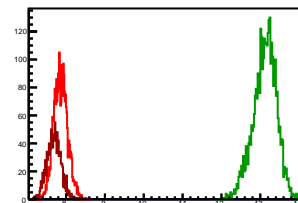
Cycle 15, NegHel

Entries: 1577	Entries: 11466	Entries: 600
Mean: 7.1669 +/- 0.0215	Mean: 12.5850 +/- 0.0106	Mean: 7.7445 +/- 0.0073
Std Dev: 0.8552 +/- 0.0152	Std Dev: 1.1336 +/- 0.0075	Std Dev: 0.1795 +/- 0.0052



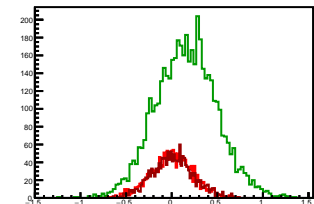
Cycle 16, NegHel

Entries: 2757	Entries: 3549	Entries: 1474
Mean: 7.8608 +/- 0.0034	Mean: 13.1176 +/- 0.0050	Mean: 7.6874 +/- 0.0047
Std Dev: 0.1783 +/- 0.0024	Std Dev: 0.3007 +/- 0.0036	Std Dev: 0.1804 +/- 0.0033



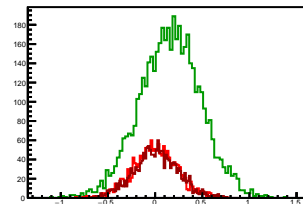
Cycle 1, Diffs

Entries: 1622	Entries: 4775	Entries: 1600
Mean: 0.0031 +/- 0.0057	Mean: 0.1585 +/- 0.0049	Mean: 0.0106 +/- 0.0057
Std Dev: 0.2281 +/- 0.0040	Std Dev: 0.3355 +/- 0.0034	Std Dev: 0.2264 +/- 0.0040



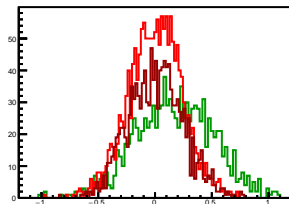
Cycle 2, Diffs

Entries: 1592	Entries: 4749	Entries: 1682
Mean: -0.0019 +/- 0.0059	Mean: 0.1585 +/- 0.0047	Mean: 0.0092 +/- 0.0058
Std Dev: 0.2354 +/- 0.0042	Std Dev: 0.3264 +/- 0.0033	Std Dev: 0.2376 +/- 0.0041



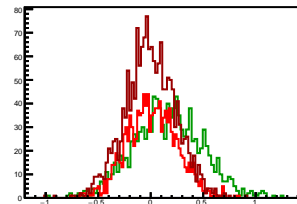
Cycle 3, Diffs

Entries: 1670	Entries: 1084	Entries: 1256
Mean: 0.0038 +/- 0.0058	Mean: 0.1711 +/- 0.0103	Mean: 0.0082 +/- 0.0067
Std Dev: 0.2357 +/- 0.0041	Std Dev: 0.3402 +/- 0.0073	Std Dev: 0.2388 +/- 0.0048



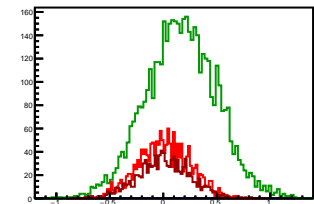
Cycle 4, Diffs

Entries: 1236	Entries: 1133	Entries: 1687
Mean: 0.0136 +/- 0.0068	Mean: 0.1604 +/- 0.0098	Mean: -0.0042 +/- 0.0059
Std Dev: 0.2381 +/- 0.0048	Std Dev: 0.3298 +/- 0.0069	Std Dev: 0.2405 +/- 0.0041



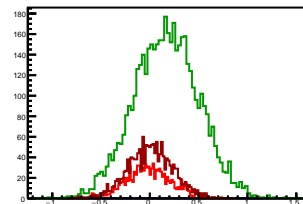
Cycle 5, Diffs

Entries: 1660	Entries: 4770	Entries: 1075
Mean: 0.0049 +/- 0.0059	Mean: 0.1655 +/- 0.0048	Mean: 0.0059 +/- 0.0073
Std Dev: 0.2414 +/- 0.0042	Std Dev: 0.3300 +/- 0.0034	Std Dev: 0.2392 +/- 0.0052



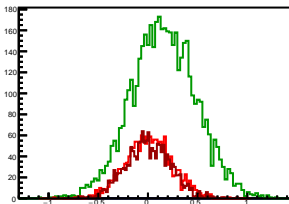
Cycle 6, Diffs

Entries: 1058	Entries: 4779	Entries: 1610
Mean: -0.0138 +/- 0.0071	Mean: 0.1679 +/- 0.0048	Mean: 0.0052 +/- 0.0056
Std Dev: 0.2332 +/- 0.0050	Std Dev: 0.3291 +/- 0.0034	Std Dev: 0.2262 +/- 0.0040



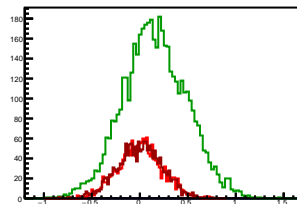
Cycle 7, Diffs

Entries: 1600	Entries: 4798	Entries: 1582
Mean: 0.0042 +/- 0.0058	Mean: 0.1576 +/- 0.0047	Mean: 0.0038 +/- 0.0057
Std Dev: 0.2329 +/- 0.0041	Std Dev: 0.3270 +/- 0.0033	Std Dev: 0.2260 +/- 0.0040



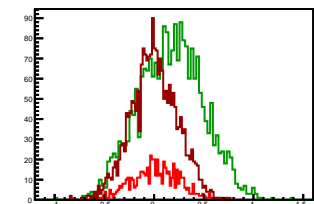
Cycle 8, Diffs

Entries: 1592	Entries: 4834	Entries: 1644
Mean: 0.0028 +/- 0.0058	Mean: 0.1572 +/- 0.0048	Mean: -0.0002 +/- 0.0057
Std Dev: 0.2304 +/- 0.0041	Std Dev: 0.3322 +/- 0.0034	Std Dev: 0.2320 +/- 0.0040



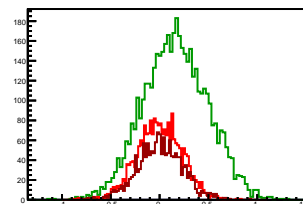
Cycle 9, Diffs

Entries: 574	Entries: 2344	Entries: 2182
Mean: 0.0126 +/- 0.0101	Mean: 0.1714 +/- 0.0067	Mean: 0.0010 +/- 0.0050
Std Dev: 0.2410 +/- 0.0071	Std Dev: 0.3233 +/- 0.0047	Std Dev: 0.2342 +/- 0.0035



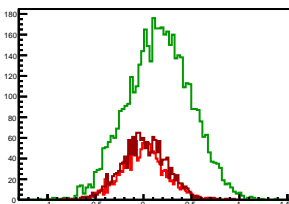
Cycle 10, Diffs

Entries: 2225	Entries: 4751	Entries: 1572
Mean: -0.0031 +/- 0.0048	Mean: 0.1614 +/- 0.0048	Mean: 0.0033 +/- 0.0058
Std Dev: 0.2271 +/- 0.0034	Std Dev: 0.3305 +/- 0.0034	Std Dev: 0.2303 +/- 0.0041



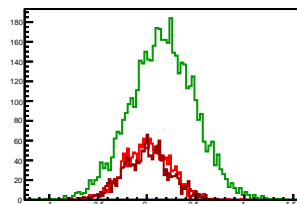
Cycle 11, Diffs

Entries: 1581	Entries: 4739	Entries: 1621
Mean: 0.0028 +/- 0.0058	Mean: 0.1612 +/- 0.0048	Mean: 0.0068 +/- 0.0059
Std Dev: 0.2312 +/- 0.0041	Std Dev: 0.3323 +/- 0.0034	Std Dev: 0.2370 +/- 0.0042



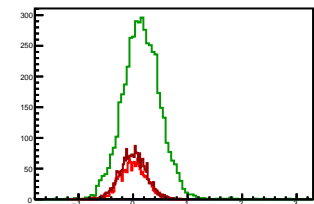
Cycle 12, Diffs

Entries: 1617	Entries: 4765	Entries: 1642
Mean: 0.0094 +/- 0.0059	Mean: 0.1594 +/- 0.0048	Mean: -0.0016 +/- 0.0058
Std Dev: 0.2358 +/- 0.0041	Std Dev: 0.3310 +/- 0.0034	Std Dev: 0.2364 +/- 0.0041



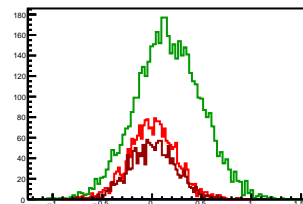
Cycle 13, Diffs

Entries: 1616	Entries: 4739	Entries: 2287
Mean: 0.0000 +/- 0.0061	Mean: 0.1559 +/- 0.0050	Mean: 0.0010 +/- 0.0050
Std Dev: 0.2446 +/- 0.0043	Std Dev: 0.3449 +/- 0.0035	Std Dev: 0.2388 +/- 0.0035



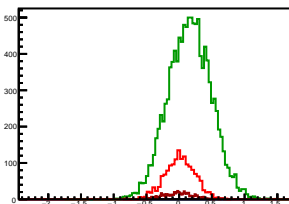
Cycle 14, Diffs

Entries: 2241	Entries: 4776	Entries: 1570
Mean: 0.0046 +/- 0.0049	Mean: 0.1636 +/- 0.0048	Mean: 0.0081 +/- 0.0058
Std Dev: 0.2341 +/- 0.0035	Std Dev: 0.3314 +/- 0.0034	Std Dev: 0.2318 +/- 0.0041



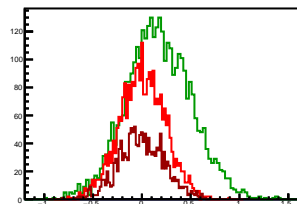
Cycle 15, Diffs

Entries: 1577	Entries: 11466	Entries: 600
Mean: 0.0101 +/- 0.0063	Mean: 0.1596 +/- 0.0031	Mean: -0.0095 +/- 0.0095
Std Dev: 0.2498 +/- 0.0044	Std Dev: 0.3278 +/- 0.0022	Std Dev: 0.2326 +/- 0.0067



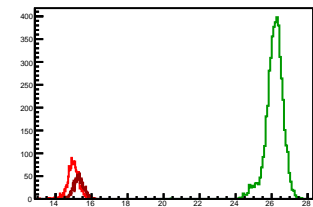
Cycle 16, Diffs

Entries: 2757	Entries: 3549	Entries: 1474
Mean: 0.0040 +/- 0.0045	Mean: 0.1721 +/- 0.0056	Mean: -0.0034 +/- 0.0061
Std Dev: 0.2353 +/- 0.0032	Std Dev: 0.3328 +/- 0.0040	Std Dev: 0.2327 +/- 0.0043



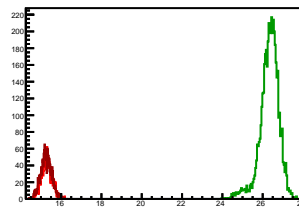
Cycle 1, Sums

Entries: 1622	Entries: 4775	Entries: 1600
Mean: 14.9803 +/- 0.0078	Mean: 26.1552 +/- 0.0070	Mean: 15.2855 +/- 0.0072
Std Dev: 0.3134 +/- 0.0055	Std Dev: 0.4853 +/- 0.0050	Std Dev: 0.2864 +/- 0.0051



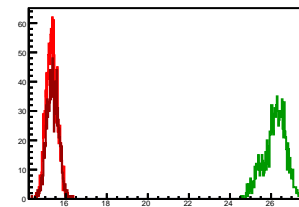
Cycle 2, Sums

Entries: 1592	Entries: 4749	Entries: 1682
Mean: 15.2934 +/- 0.0066	Mean: 26.3314 +/- 0.0069	Mean: 15.2597 +/- 0.0066
Std Dev: 0.2636 +/- 0.0047	Std Dev: 0.4763 +/- 0.0049	Std Dev: 0.2724 +/- 0.0047



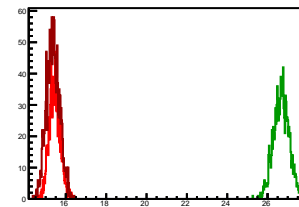
Cycle 3, Sums

Entries: 1670	Entries: 1084	Entries: 1256
Mean: 15.3180 +/- 0.0068	Mean: 26.1843 +/- 0.0163	Mean: 15.3581 +/- 0.0079
Std Dev: 0.2775 +/- 0.0048	Std Dev: 0.5363 +/- 0.0115	Std Dev: 0.2783 +/- 0.0056



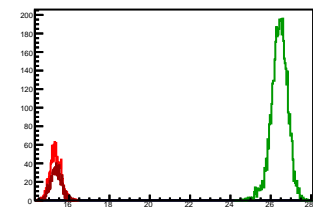
Cycle 4, Sums

Entries: 1236	Entries: 1133	Entries: 1687
Mean: 15.4413 +/- 0.0077	Mean: 26.6788 +/- 0.0115	Mean: 15.3661 +/- 0.0079
Std Dev: 0.2697 +/- 0.0054	Std Dev: 0.3859 +/- 0.0081	Std Dev: 0.3258 +/- 0.0056



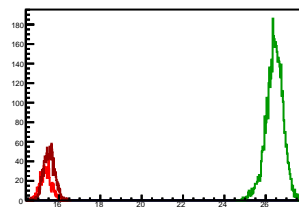
Cycle 5, Sums

Entries: 1660	Entries: 4770	Entries: 1075
Mean: 15.3155 +/- 0.0066	Mean: 26.4321 +/- 0.0060	Mean: 15.3475 +/- 0.0082
Std Dev: 0.2671 +/- 0.0046	Std Dev: 0.4126 +/- 0.0042	Std Dev: 0.2693 +/- 0.0058



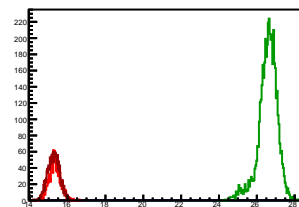
Cycle 6, Sums

Entries: 1058	Entries: 4779	Entries: 1610
Mean: 15.3684 +/- 0.0082	Mean: 26.4197 +/- 0.0060	Mean: 15.5242 +/- 0.0068
Std Dev: 0.2679 +/- 0.0058	Std Dev: 0.4161 +/- 0.0043	Std Dev: 0.2715 +/- 0.0048



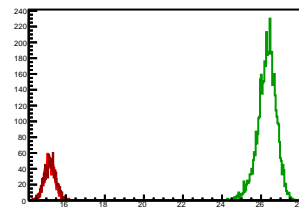
Cycle 7, Sums

Entries: 1600	Entries: 4798	Entries: 1582
Mean: 15.3321 +/- 0.0073	Mean: 26.5837 +/- 0.0073	Mean: 15.2584 +/- 0.0077
Std Dev: 0.2921 +/- 0.0052	Std Dev: 0.5063 +/- 0.0052	Std Dev: 0.3078 +/- 0.0055



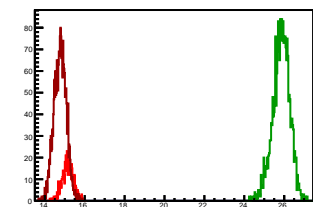
Cycle 8, Sums

Entries: 1592	Entries: 4834	Entries: 1644
Mean: 15.1834 +/- 0.0068	Mean: 26.3023 +/- 0.0069	Mean: 15.1954 +/- 0.0073
Std Dev: 0.2716 +/- 0.0048	Std Dev: 0.4781 +/- 0.0049	Std Dev: 0.2970 +/- 0.0052



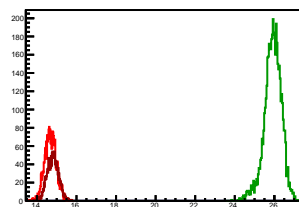
Cycle 9, Sums

Entries: 574	Entries: 2344	Entries: 2182
Mean: 15.1443 +/- 0.0119	Mean: 25.8538 +/- 0.0089	Mean: 14.7690 +/- 0.0067
Std Dev: 0.2852 +/- 0.0084	Std Dev: 0.4309 +/- 0.0063	Std Dev: 0.3126 +/- 0.0047



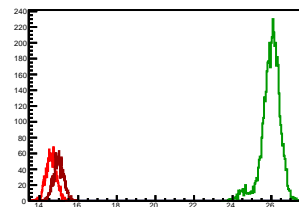
Cycle 10, Sums

Entries: 2225	Entries: 4751	Entries: 1572
Mean: 14.6791 +/- 0.0063	Mean: 25.9214 +/- 0.0063	Mean: 14.8040 +/- 0.0072
Std Dev: 0.2961 +/- 0.0044	Std Dev: 0.4344 +/- 0.0045	Std Dev: 0.2871 +/- 0.0051



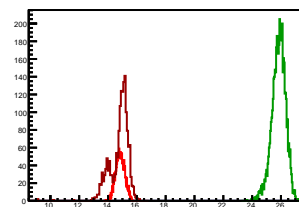
Cycle 11, Sums

Entries: 1581	Entries: 4739	Entries: 1621
Mean: 14.5971 +/- 0.0069	Mean: 25.9797 +/- 0.0072	Mean: 14.9854 +/- 0.0064
Std Dev: 0.2739 +/- 0.0049	Std Dev: 0.4935 +/- 0.0051	Std Dev: 0.2595 +/- 0.0046



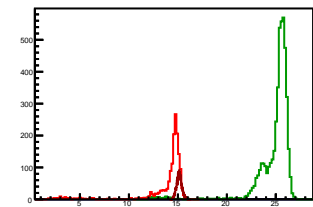
Cycle 12, Sums

Entries: 1617	Entries: 4765	Entries: 1642
Mean: 14.8542 +/- 0.0077	Mean: 25.8419 +/- 0.0070	Mean: 14.7794 +/- 0.0160
Std Dev: 0.3107 +/- 0.0055	Std Dev: 0.4810 +/- 0.0049	Std Dev: 0.6473 +/- 0.0113



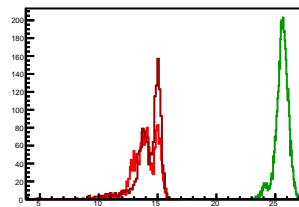
Cycle 13, Sums

Entries: 1616	Entries: 4739	Entries: 2287
Mean: 13.8141 +/- 0.0641	Mean: 24.8848 +/- 0.0282	Mean: 15.1345 +/- 0.0056
Std Dev: 2.5777 +/- 0.0453	Std Dev: 1.9423 +/- 0.0200	Std Dev: 0.2684 +/- 0.0040



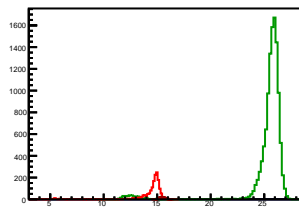
Cycle 14, Sums

Entries: 2241	Entries: 4776	Entries: 1570
Mean: 13.9808 +/- 0.0212	Mean: 25.5756 +/- 0.0081	Mean: 14.1849 +/- 0.0306
Std Dev: 1.0055 +/- 0.0150	Std Dev: 0.5577 +/- 0.0057	Std Dev: 1.2131 +/- 0.0216



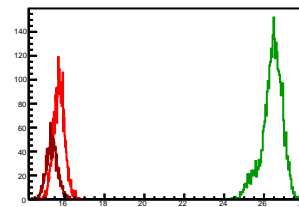
Cycle 15, Sums

Entries: 1577	Entries: 11466	Entries: 600
Mean: 14.3439 +/- 0.0428	Mean: 25.3296 +/- 0.0210	Mean: 15.4794 +/- 0.0114
Std Dev: 1.7000 +/- 0.0303	Std Dev: 2.2490 +/- 0.0149	Std Dev: 0.2784 +/- 0.0080



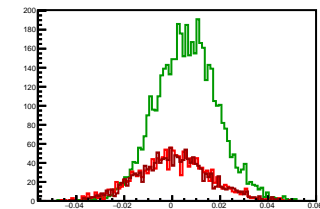
Cycle 16, Sums

Entries: 2757	Entries: 3549	Entries: 1474
Mean: 15.7256 +/- 0.0053	Mean: 26.4073 +/- 0.0087	Mean: 15.3714 +/- 0.0074
Std Dev: 0.2789 +/- 0.0038	Std Dev: 0.5184 +/- 0.0062	Std Dev: 0.2849 +/- 0.0052



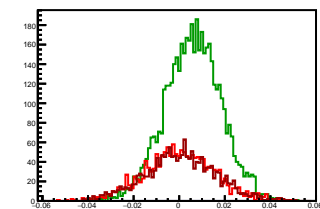
Cycle 1, Asyms

Entries: 1622	Entries: 4775	Entries: 1600
Mean: 0.0002 +/- 0.0004	Mean: 0.0061 +/- 0.0002	Mean: 0.0007 +/- 0.0004
Std Dev: 0.0152 +/- 0.0003	Std Dev: 0.0128 +/- 0.0001	Std Dev: 0.0148 +/- 0.0003



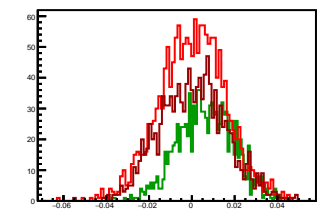
Cycle 2, Asyms

Entries: 1592	Entries: 4749	Entries: 1682
Mean: -0.0001 +/- 0.0004	Mean: 0.0060 +/- 0.0002	Mean: 0.0006 +/- 0.0004
Std Dev: 0.0153 +/- 0.0003	Std Dev: 0.0124 +/- 0.0001	Std Dev: 0.0155 +/- 0.0003



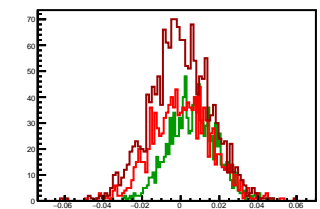
Cycle 3, Asyms

Entries: 1670	Entries: 1084	Entries: 1256
Mean: 0.0003 +/- 0.0004	Mean: 0.0065 +/- 0.0004	Mean: 0.0005 +/- 0.0004
Std Dev: 0.0154 +/- 0.0003	Std Dev: 0.0130 +/- 0.0003	Std Dev: 0.0155 +/- 0.0003



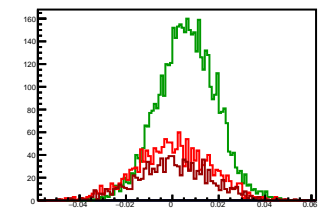
Cycle 4, Asyms

Entries: 1236	Entries: 1133	Entries: 1687
Mean: 0.0009 +/- 0.0004	Mean: 0.0060 +/- 0.0004	Mean: -0.0003 +/- 0.0004
Std Dev: 0.0154 +/- 0.0003	Std Dev: 0.0124 +/- 0.0003	Std Dev: 0.0156 +/- 0.0003



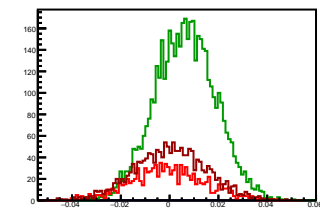
Cycle 5, Asyms

Entries: 1660	Entries: 4770	Entries: 1075
Mean: 0.0003 +/- 0.0004	Mean: 0.0063 +/- 0.0002	Mean: 0.0004 +/- 0.0005
Std Dev: 0.0157 +/- 0.0003	Std Dev: 0.0125 +/- 0.0001	Std Dev: 0.0156 +/- 0.0003



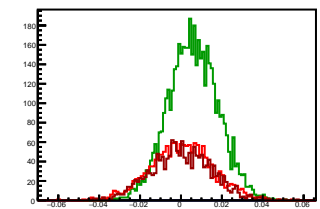
Cycle 6, Asyms

Entries: 1058	Entries: 4779	Entries: 1610
Mean: -0.0009 +/- 0.0005	Mean: 0.0063 +/- 0.0002	Mean: 0.0003 +/- 0.0004
Std Dev: 0.0151 +/- 0.0003	Std Dev: 0.0125 +/- 0.0001	Std Dev: 0.0145 +/- 0.0003



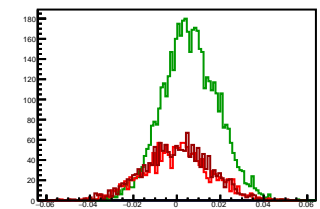
Cycle 7, Asyms

Entries: 1600	Entries: 4798	Entries: 1582
Mean: 0.0003 +/- 0.0004	Mean: 0.0059 +/- 0.0002	Mean: 0.0002 +/- 0.0004
Std Dev: 0.0151 +/- 0.0003	Std Dev: 0.0123 +/- 0.0001	Std Dev: 0.0148 +/- 0.0003



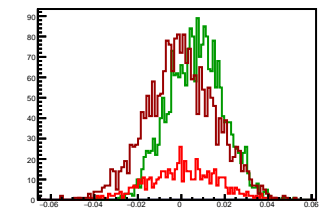
Cycle 8, Asyms

Entries: 1592	Entries: 4834	Entries: 1644
Mean: 0.0002 +/- 0.0004	Mean: 0.0060 +/- 0.0002	Mean: -0.0000 +/- 0.0004
Std Dev: 0.0151 +/- 0.0003	Std Dev: 0.0126 +/- 0.0001	Std Dev: 0.0153 +/- 0.0003



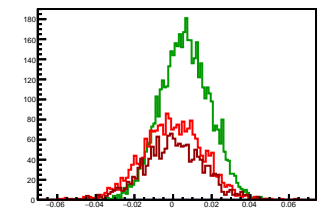
Cycle 9, Asyms

Entries: 574	Entries: 2344	Entries: 2182
Mean: 0.0008 +/- 0.0007	Mean: 0.0066 +/- 0.0003	Mean: 0.0001 +/- 0.0003
Std Dev: 0.0159 +/- 0.0005	Std Dev: 0.0125 +/- 0.0002	Std Dev: 0.0158 +/- 0.0002



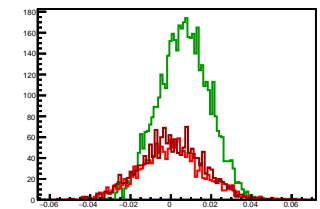
Cycle 10, Asyms

Entries: 2225	Entries: 4751	Entries: 1572
Mean: -0.0002 +/- 0.0003	Mean: 0.0062 +/- 0.0002	Mean: 0.0002 +/- 0.0004
Std Dev: 0.0154 +/- 0.0002	Std Dev: 0.0127 +/- 0.0001	Std Dev: 0.0155 +/- 0.0003



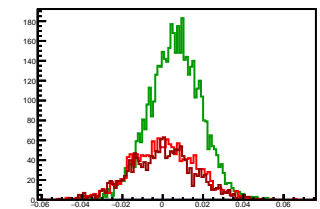
Cycle 11, Asyms

Entries: 1581	Entries: 4739	Entries: 1621
Mean: 0.0002 +/- 0.0004	Mean: 0.0062 +/- 0.0002	Mean: 0.0005 +/- 0.0004
Std Dev: 0.0158 +/- 0.0003	Std Dev: 0.0128 +/- 0.0001	Std Dev: 0.0158 +/- 0.0003



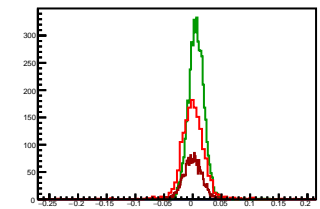
Cycle 12, Asyms

Entries: 1617	Entries: 4765	Entries: 1642
Mean: 0.0006 +/- 0.0004	Mean: 0.0062 +/- 0.0002	Mean: -0.0001 +/- 0.0004
Std Dev: 0.0158 +/- 0.0003	Std Dev: 0.0128 +/- 0.0001	Std Dev: 0.0160 +/- 0.0003



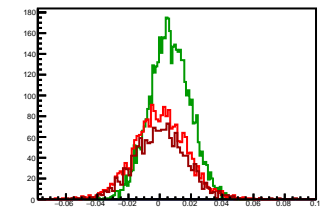
Cycle 13, Asyms

Entries: 1616	Entries: 4739	Entries: 2287
Mean: 0.0004 +/- 0.0006	Mean: 0.0063 +/- 0.0002	Mean: 0.0001 +/- 0.0003
Std Dev: 0.0230 +/- 0.0004	Std Dev: 0.0145 +/- 0.0001	Std Dev: 0.0157 +/- 0.0002



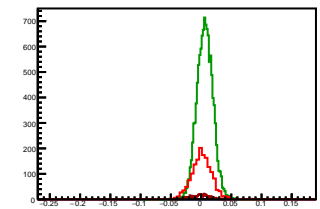
Cycle 14, Asyms

Entries: 2241	Entries: 4776	Entries: 1570
Mean: 0.0003 +/- 0.0004	Mean: 0.0064 +/- 0.0002	Mean: 0.0006 +/- 0.0004
Std Dev: 0.0170 +/- 0.0003	Std Dev: 0.0130 +/- 0.0001	Std Dev: 0.0167 +/- 0.0003



Cycle 15, Asyms

Entries: 1577	Entries: 11466	Entries: 600
Mean: 0.0006 +/- 0.0005	Mean: 0.0064 +/- 0.0001	Mean: -0.0006 +/- 0.0006
Std Dev: 0.0197 +/- 0.0004	Std Dev: 0.0133 +/- 0.0001	Std Dev: 0.0150 +/- 0.0004



Cycle 16, Asyms

Entries: 2757	Entries: 3549	Entries: 1474
Mean: 0.0002 +/- 0.0003	Mean: 0.0065 +/- 0.0002	Mean: -0.0002 +/- 0.0004
Std Dev: 0.0149 +/- 0.0002	Std Dev: 0.0126 +/- 0.0001	Std Dev: 0.0151 +/- 0.0003

