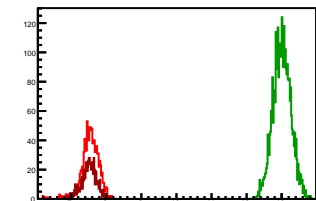


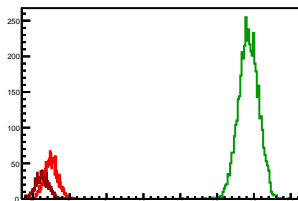
### Cycle 1, PosHel

Entries: 1094	Entries: 3563	Entries: 766
Mean: 7.5456 +/- 0.0073	Mean: 13.0073 +/- 0.0043	Mean: 7.5064 +/- 0.0076
Std Dev: 0.2430 +/- 0.0052	Std Dev: 0.2558 +/- 0.0030	Std Dev: 0.2109 +/- 0.0054



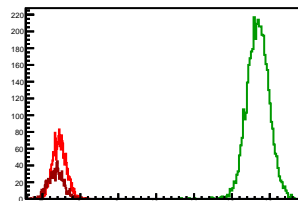
### Cycle 2, PosHel

Entries: 1826	Entries: 4613	Entries: 1074
Mean: 7.4961 +/- 0.0043	Mean: 12.8539 +/- 0.0040	Mean: 7.2475 +/- 0.0055
Std Dev: 0.1824 +/- 0.0030	Std Dev: 0.2729 +/- 0.0028	Std Dev: 0.1799 +/- 0.0039



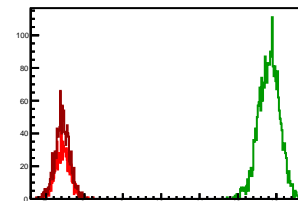
### Cycle 3, PosHel

Entries: 2046	Entries: 4353	Entries: 1009
Mean: 7.4512 +/- 0.0040	Mean: 12.6857 +/- 0.0044	Mean: 7.3522 +/- 0.0066
Std Dev: 0.1812 +/- 0.0028	Std Dev: 0.2925 +/- 0.0031	Std Dev: 0.2081 +/- 0.0046



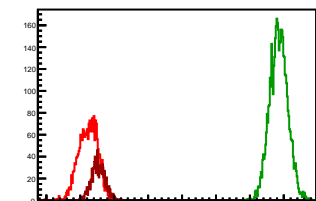
### Cycle 4, PosHel

Entries: 1021	Entries: 2593	Entries: 1284
Mean: 7.4298 +/- 0.0057	Mean: 12.8125 +/- 0.0054	Mean: 7.4257 +/- 0.0055
Std Dev: 0.1807 +/- 0.0040	Std Dev: 0.2742 +/- 0.0038	Std Dev: 0.1963 +/- 0.0039



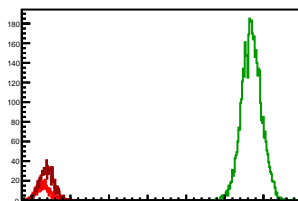
### Cycle 5, PosHel

Entries: 2113	Entries: 4648	Entries: 1098
Mean: 7.2315 +/- 0.0061	Mean: 12.8507 +/- 0.0039	Mean: 7.5318 +/- 0.0060
Std Dev: 0.2792 +/- 0.0043	Std Dev: 0.2645 +/- 0.0027	Std Dev: 0.2001 +/- 0.0043



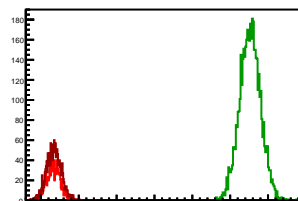
### Cycle 6, PosHel

Entries: 567	Entries: 4623	Entries: 1082
Mean: 7.2941 +/- 0.0073	Mean: 12.6940 +/- 0.0038	Mean: 7.3914 +/- 0.0056
Std Dev: 0.1728 +/- 0.0051	Std Dev: 0.2566 +/- 0.0027	Std Dev: 0.1830 +/- 0.0039



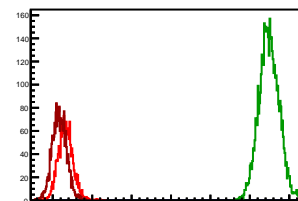
### Cycle 7, PosHel

Entries: 1070	Entries: 4685	Entries: 1636
Mean: 7.3398 +/- 0.0055	Mean: 12.5267 +/- 0.0040	Mean: 7.3454 +/- 0.0047
Std Dev: 0.1787 +/- 0.0039	Std Dev: 0.2748 +/- 0.0028	Std Dev: 0.1911 +/- 0.0033



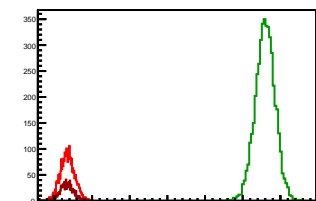
### Cycle 8, PosHel

Entries: 1618	Entries: 4591	Entries: 2296
Mean: 7.3226 +/- 0.0047	Mean: 12.4884 +/- 0.0038	Mean: 7.1697 +/- 0.0038
Std Dev: 0.1876 +/- 0.0033	Std Dev: 0.2565 +/- 0.0027	Std Dev: 0.1827 +/- 0.0027



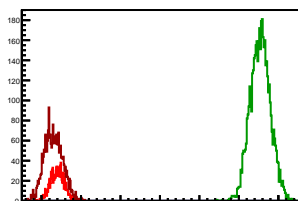
### Cycle 9, PosHel

Entries: 2798	Entries: 4620	Entries: 963
Mean: 7.3472 +/- 0.0036	Mean: 12.5957 +/- 0.0039	Mean: 7.3294 +/- 0.0058
Std Dev: 0.1903 +/- 0.0025	Std Dev: 0.2671 +/- 0.0028	Std Dev: 0.1798 +/- 0.0041



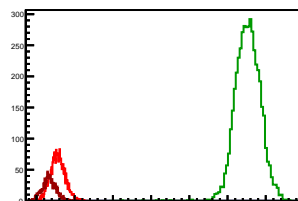
### Cycle 10, PosHel

Entries: 988	Entries: 4688	Entries: 2344
Mean: 7.4011 +/- 0.0055	Mean: 12.5435 +/- 0.0037	Mean: 7.3028 +/- 0.0048
Std Dev: 0.1738 +/- 0.0039	Std Dev: 0.2535 +/- 0.0026	Std Dev: 0.2315 +/- 0.0034



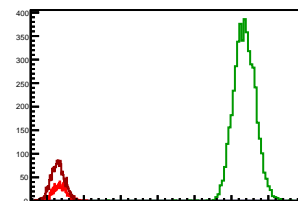
### Cycle 11, PosHel

Entries: 2323	Entries: 4564	Entries: 1076
Mean: 7.5584 +/- 0.0040	Mean: 12.5306 +/- 0.0048	Mean: 7.3329 +/- 0.0056
Std Dev: 0.1945 +/- 0.0029	Std Dev: 0.3286 +/- 0.0034	Std Dev: 0.1830 +/- 0.0039



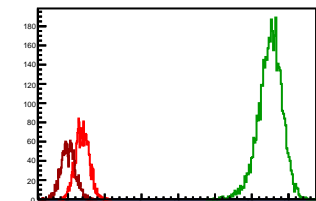
### Cycle 12, PosHel

Entries: 1069	Entries: 4676	Entries: 2394
Mean: 7.3531 +/- 0.0057	Mean: 12.3540 +/- 0.0043	Mean: 7.2969 +/- 0.0038
Std Dev: 0.1854 +/- 0.0040	Std Dev: 0.2967 +/- 0.0031	Std Dev: 0.1858 +/- 0.0027



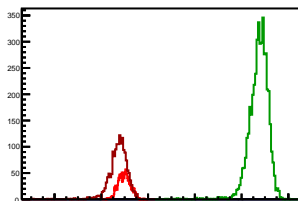
### Cycle 13, PosHel

Entries: 2325	Entries: 4410	Entries: 1642
Mean: 7.3899 +/- 0.0039	Mean: 12.4959 +/- 0.0050	Mean: 7.0030 +/- 0.0048
Std Dev: 0.1866 +/- 0.0027	Std Dev: 0.3298 +/- 0.0035	Std Dev: 0.1927 +/- 0.0034



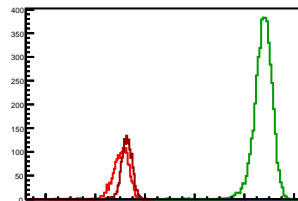
### Cycle 14, PosHel

Entries: 1619	Entries: 4577	Entries: 1621
Mean: 6.9812 +/- 0.0063	Mean: 12.7295 +/- 0.0063	Mean: 6.7240 +/- 0.0102
Std Dev: 0.2537 +/- 0.0045	Std Dev: 0.4271 +/- 0.0045	Std Dev: 0.4107 +/- 0.0072



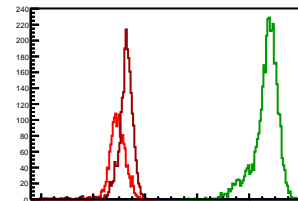
### Cycle 15, PosHel

Entries: 1609	Entries: 4676	Entries: 1586
Mean: 7.0207 +/- 0.0089	Mean: 12.7481 +/- 0.0059	Mean: 7.2550 +/- 0.0065
Std Dev: 0.3585 +/- 0.0063	Std Dev: 0.4028 +/- 0.0042	Std Dev: 0.2573 +/- 0.0046



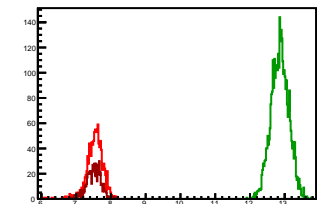
### Cycle 16, PosHel

Entries: 1596	Entries: 3838	Entries: 2248
Mean: 6.9354 +/- 0.0086	Mean: 12.6463 +/- 0.0079	Mean: 7.2407 +/- 0.0075
Std Dev: 0.3428 +/- 0.0061	Std Dev: 0.4867 +/- 0.0056	Std Dev: 0.3560 +/- 0.0053



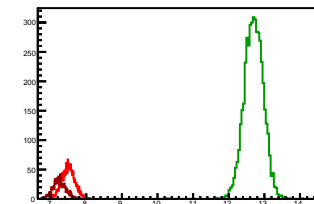
### Cycle 1, NegHel

Entries: 1094	Entries: 3563	Entries: 766
Mean: 7.5377 +/- 0.0071	Mean: 12.8608 +/- 0.0043	Mean: 7.5068 +/- 0.0074
Std Dev: 0.2356 +/- 0.0050	Std Dev: 0.2560 +/- 0.0030	Std Dev: 0.2044 +/- 0.0052



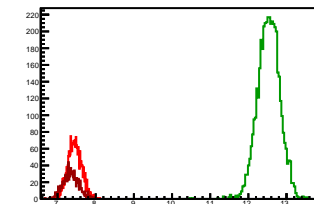
### Cycle 2, NegHel

Entries: 1826	Entries: 4613	Entries: 1074
Mean: 7.4964 +/- 0.0043	Mean: 12.7025 +/- 0.0040	Mean: 7.2492 +/- 0.0055
Std Dev: 0.1831 +/- 0.0030	Std Dev: 0.2688 +/- 0.0028	Std Dev: 0.1801 +/- 0.0039



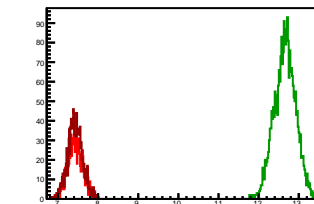
### Cycle 3, NegHel

Entries: 2046	Entries: 4353	Entries: 1009
Mean: 7.4492 +/- 0.0041	Mean: 12.5318 +/- 0.0044	Mean: 7.3492 +/- 0.0065
Std Dev: 0.1847 +/- 0.0029	Std Dev: 0.2914 +/- 0.0031	Std Dev: 0.2064 +/- 0.0046



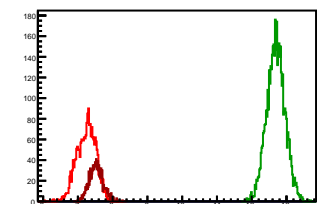
### Cycle 4, NegHel

Entries: 1021	Entries: 2593	Entries: 1284
Mean: 7.4279 +/- 0.0057	Mean: 12.6572 +/- 0.0053	Mean: 7.4236 +/- 0.0053
Std Dev: 0.1816 +/- 0.0040	Std Dev: 0.2681 +/- 0.0037	Std Dev: 0.1984 +/- 0.0037



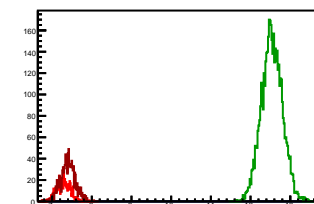
### Cycle 5, NegHel

Entries: 2113	Entries: 4648	Entries: 1098
Mean: 7.2427 +/- 0.0059	Mean: 12.6947 +/- 0.0039	Mean: 7.5276 +/- 0.0059
Std Dev: 0.2724 +/- 0.0042	Std Dev: 0.2633 +/- 0.0027	Std Dev: 0.1957 +/- 0.0042



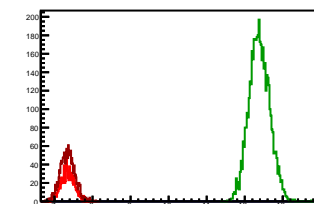
### Cycle 6, NegHel

Entries: 567	Entries: 4623	Entries: 1082
Mean: 7.2862 +/- 0.0075	Mean: 12.5381 +/- 0.0039	Mean: 7.4005 +/- 0.0056
Std Dev: 0.1794 +/- 0.0053	Std Dev: 0.2631 +/- 0.0027	Std Dev: 0.1841 +/- 0.0040



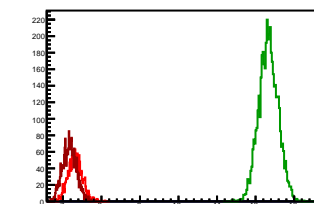
### Cycle 7, NegHel

Entries: 1070	Entries: 4685	Entries: 1636
Mean: 7.3477 +/- 0.0054	Mean: 12.3833 +/- 0.0039	Mean: 7.3433 +/- 0.0047
Std Dev: 0.1782 +/- 0.0039	Std Dev: 0.2687 +/- 0.0028	Std Dev: 0.1907 +/- 0.0033



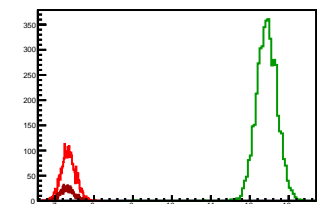
### Cycle 8, NegHel

Entries: 1618	Entries: 4591	Entries: 2296
Mean: 7.3185 +/- 0.0046	Mean: 12.3347 +/- 0.0037	Mean: 7.1700 +/- 0.0037
Std Dev: 0.1857 +/- 0.0033	Std Dev: 0.2499 +/- 0.0026	Std Dev: 0.1792 +/- 0.0026



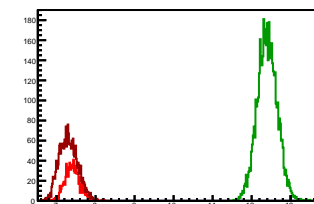
### Cycle 9, NegHel

Entries: 2798	Entries: 4620	Entries: 963
Mean: 7.3448 +/- 0.0036	Mean: 12.4369 +/- 0.0039	Mean: 7.3211 +/- 0.0056
Std Dev: 0.1889 +/- 0.0025	Std Dev: 0.2669 +/- 0.0028	Std Dev: 0.1746 +/- 0.0040



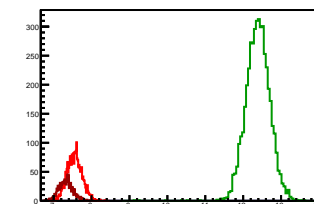
### Cycle 10, NegHel

Entries: 988	Entries: 4688	Entries: 2344
Mean: 7.4061 +/- 0.0060	Mean: 12.3990 +/- 0.0037	Mean: 7.3039 +/- 0.0049
Std Dev: 0.1895 +/- 0.0043	Std Dev: 0.2543 +/- 0.0026	Std Dev: 0.2350 +/- 0.0034



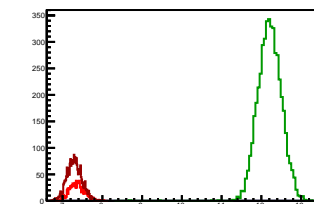
### Cycle 11, NegHel

Entries: 2323	Entries: 4564	Entries: 1076
Mean: 7.5534 +/- 0.0041	Mean: 12.3863 +/- 0.0047	Mean: 7.3204 +/- 0.0058
Std Dev: 0.1955 +/- 0.0029	Std Dev: 0.3192 +/- 0.0033	Std Dev: 0.1896 +/- 0.0041



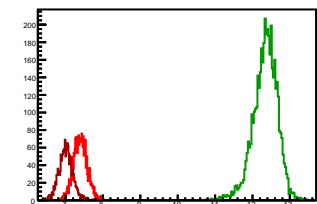
### Cycle 12, NegHel

Entries: 1069	Entries: 4676	Entries: 2394
Mean: 7.3578 +/- 0.0057	Mean: 12.2094 +/- 0.0043	Mean: 7.2967 +/- 0.0038
Std Dev: 0.1859 +/- 0.0040	Std Dev: 0.2966 +/- 0.0031	Std Dev: 0.1860 +/- 0.0027



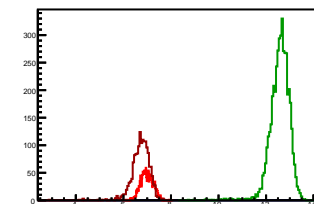
### Cycle 13, NegHel

Entries: 2325	Entries: 4410	Entries: 1642
Mean: 7.3951 +/- 0.0039	Mean: 12.3381 +/- 0.0049	Mean: 7.0041 +/- 0.0046
Std Dev: 0.1862 +/- 0.0027	Std Dev: 0.3267 +/- 0.0035	Std Dev: 0.1862 +/- 0.0032



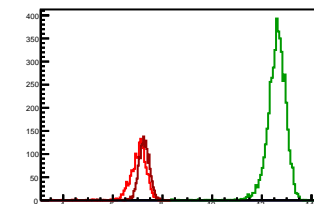
### Cycle 14, NegHel

Entries: 1619	Entries: 4577	Entries: 1621
Mean: 6.9847 +/- 0.0064	Mean: 12.5730 +/- 0.0062	Mean: 6.7252 +/- 0.0097
Std Dev: 0.2589 +/- 0.0046	Std Dev: 0.4214 +/- 0.0044	Std Dev: 0.3912 +/- 0.0069



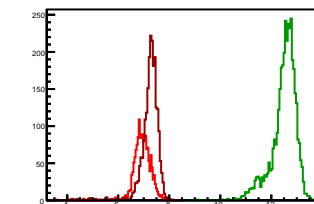
### Cycle 15, NegHel

Entries: 1609	Entries: 4676	Entries: 1586
Mean: 7.0285 +/- 0.0090	Mean: 12.5931 +/- 0.0058	Mean: 7.2491 +/- 0.0066
Std Dev: 0.3613 +/- 0.0064	Std Dev: 0.3969 +/- 0.0041	Std Dev: 0.2620 +/- 0.0047



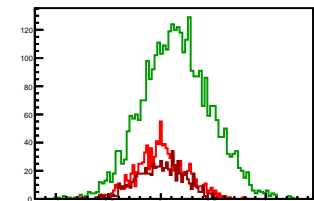
### Cycle 16, NegHel

Entries: 1596	Entries: 3838	Entries: 2248
Mean: 6.9427 +/- 0.0084	Mean: 12.4927 +/- 0.0078	Mean: 7.2411 +/- 0.0078
Std Dev: 0.3352 +/- 0.0059	Std Dev: 0.4809 +/- 0.0055	Std Dev: 0.3709 +/- 0.0055



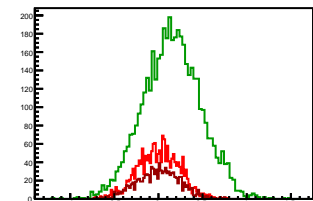
### Cycle 1, Diffs

Entries: 1094	Entries: 3563	Entries: 766
Mean: 0.0079 +/- 0.0070	Mean: 0.1465 +/- 0.0054	Mean: -0.0004 +/- 0.0081
Std Dev: 0.2307 +/- 0.0049	Std Dev: 0.3237 +/- 0.0038	Std Dev: 0.2250 +/- 0.0057



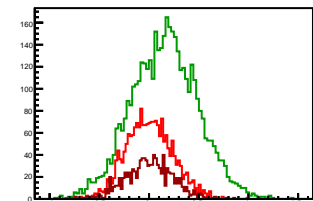
### Cycle 2, Diffs

Entries: 1826	Entries: 4613	Entries: 1074
Mean: -0.0003 +/- 0.0055	Mean: 0.1513 +/- 0.0048	Mean: -0.0017 +/- 0.0073
Std Dev: 0.2343 +/- 0.0039	Std Dev: 0.3270 +/- 0.0034	Std Dev: 0.2391 +/- 0.0052



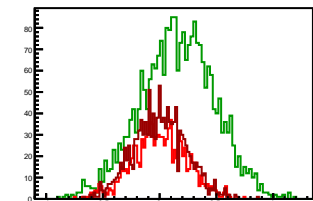
### Cycle 3, Diffs

Entries: 2046	Entries: 4353	Entries: 1009
Mean: 0.0020 +/- 0.0052	Mean: 0.1539 +/- 0.0050	Mean: 0.0029 +/- 0.0073
Std Dev: 0.2330 +/- 0.0036	Std Dev: 0.3318 +/- 0.0036	Std Dev: 0.2314 +/- 0.0052



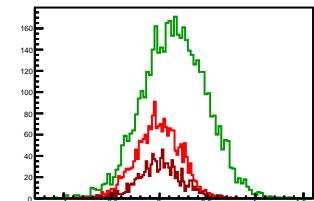
### Cycle 4, Diffs

Entries: 1021	Entries: 2593	Entries: 1284
Mean: 0.0019 +/- 0.0075	Mean: 0.1553 +/- 0.0064	Mean: 0.0021 +/- 0.0064
Std Dev: 0.2404 +/- 0.0053	Std Dev: 0.3268 +/- 0.0045	Std Dev: 0.2305 +/- 0.0045



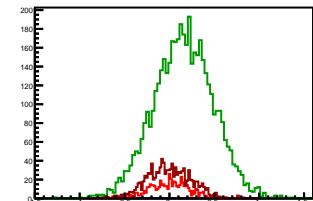
### Cycle 5, Diffs

Entries: 2113	Entries: 4648	Entries: 1098
Mean: -0.0111 +/- 0.0050	Mean: 0.1561 +/- 0.0048	Mean: 0.0042 +/- 0.0068
Std Dev: 0.2282 +/- 0.0035	Std Dev: 0.3295 +/- 0.0034	Std Dev: 0.2262 +/- 0.0048



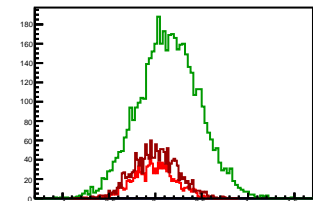
### Cycle 6, Diffs

Entries: 567	Entries: 4623	Entries: 1082
Mean: 0.0078 +/- 0.0092	Mean: 0.1558 +/- 0.0048	Mean: -0.0092 +/- 0.0074
Std Dev: 0.2201 +/- 0.0065	Std Dev: 0.3294 +/- 0.0034	Std Dev: 0.2434 +/- 0.0052



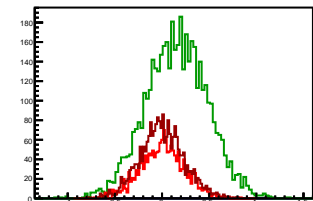
### Cycle 7, Diffs

Entries: 1070	Entries: 4685	Entries: 1636
Mean: -0.0079 +/- 0.0069	Mean: 0.1434 +/- 0.0048	Mean: 0.0021 +/- 0.0058
Std Dev: 0.2259 +/- 0.0049	Std Dev: 0.3298 +/- 0.0034	Std Dev: 0.2363 +/- 0.0041



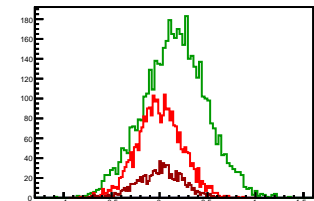
### Cycle 8, Diffs

Entries: 1618	Entries: 4591	Entries: 2296
Mean: 0.0041 +/- 0.0059	Mean: 0.1537 +/- 0.0048	Mean: -0.0003 +/- 0.0049
Std Dev: 0.2362 +/- 0.0042	Std Dev: 0.3262 +/- 0.0034	Std Dev: 0.2342 +/- 0.0035



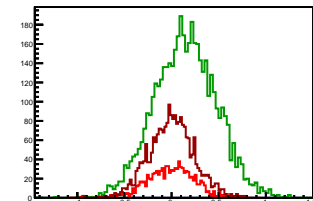
### Cycle 9, Diffs

Entries: 2798	Entries: 4620	Entries: 963
Mean: 0.0024 +/- 0.0044	Mean: 0.1588 +/- 0.0048	Mean: 0.0084 +/- 0.0074
Std Dev: 0.2342 +/- 0.0031	Std Dev: 0.3279 +/- 0.0034	Std Dev: 0.2296 +/- 0.0052



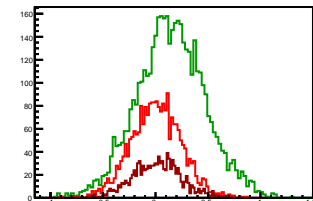
### Cycle 10, Diffs

Entries: 988	Entries: 4688	Entries: 2344
Mean: -0.0050 +/- 0.0077	Mean: 0.1445 +/- 0.0048	Mean: -0.0011 +/- 0.0050
Std Dev: 0.2408 +/- 0.0054	Std Dev: 0.3288 +/- 0.0034	Std Dev: 0.2401 +/- 0.0035



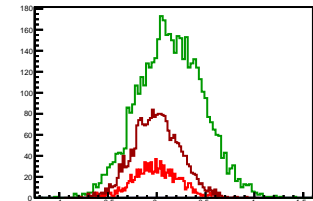
### Cycle 11, Diffs

Entries: 2323	Entries: 4564	Entries: 1076
Mean: 0.0050 +/- 0.0049	Mean: 0.1442 +/- 0.0048	Mean: 0.0125 +/- 0.0070
Std Dev: 0.2385 +/- 0.0035	Std Dev: 0.3242 +/- 0.0034	Std Dev: 0.2287 +/- 0.0049



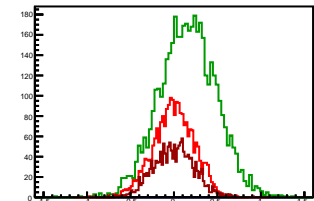
### Cycle 12, Diffs

Entries: 1069	Entries: 4676	Entries: 2394
Mean: -0.0047 +/- 0.0071	Mean: 0.1446 +/- 0.0048	Mean: 0.0002 +/- 0.0049
Std Dev: 0.2327 +/- 0.0050	Std Dev: 0.3303 +/- 0.0034	Std Dev: 0.2398 +/- 0.0035



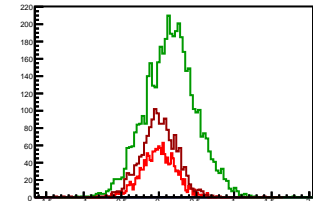
### Cycle 13, Diffs

Entries: 2325	Entries: 4410	Entries: 1642
Mean: -0.0051 +/- 0.0048	Mean: 0.1578 +/- 0.0049	Mean: -0.0011 +/- 0.0057
Std Dev: 0.2338 +/- 0.0034	Std Dev: 0.3258 +/- 0.0035	Std Dev: 0.2320 +/- 0.0040



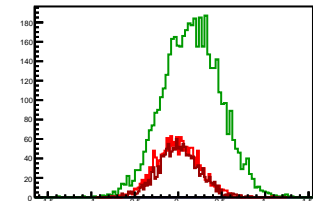
### Cycle 14, Diffs

Entries: 1619	Entries: 4577	Entries: 1621
Mean: -0.0035 +/- 0.0057	Mean: 0.1565 +/- 0.0050	Mean: -0.0013 +/- 0.0061
Std Dev: 0.2290 +/- 0.0040	Std Dev: 0.3362 +/- 0.0035	Std Dev: 0.2447 +/- 0.0043



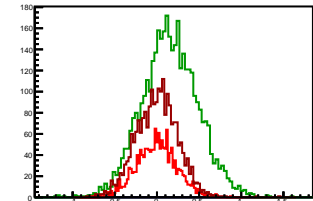
### Cycle 15, Diffs

Entries: 1609	Entries: 4676	Entries: 1586
Mean: -0.0078 +/- 0.0060	Mean: 0.1550 +/- 0.0048	Mean: 0.0059 +/- 0.0060
Std Dev: 0.2426 +/- 0.0043	Std Dev: 0.3286 +/- 0.0034	Std Dev: 0.2378 +/- 0.0042



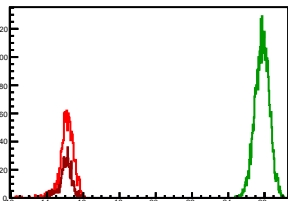
### Cycle 16, Diffs

Entries: 1596	Entries: 3838	Entries: 2248
Mean: -0.0073 +/- 0.0060	Mean: 0.1536 +/- 0.0054	Mean: -0.0003 +/- 0.0052
Std Dev: 0.2411 +/- 0.0043	Std Dev: 0.3329 +/- 0.0038	Std Dev: 0.2456 +/- 0.0037



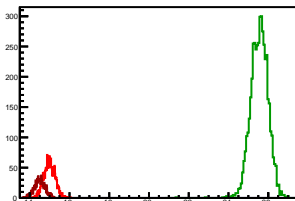
## Cycle 1, Sums

Entries: 1094	Entries: 3563	Entries: 766
Mean: 15.0832 +/- 0.0127	Mean: 25.8681 +/- 0.0066	Mean: 15.0132 +/- 0.0126
Std Dev: 0.4194 +/- 0.0090	Std Dev: 0.3965 +/- 0.0047	Std Dev: 0.3491 +/- 0.0089



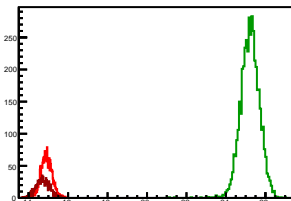
## Cycle 2, Sums

Entries: 1826	Entries: 4613	Entries: 1074
Mean: 14.9925 +/- 0.0066	Mean: 25.5564 +/- 0.0064	Mean: 14.4967 +/- 0.0082
Std Dev: 0.2806 +/- 0.0046	Std Dev: 0.4319 +/- 0.0045	Std Dev: 0.2891 +/- 0.0058



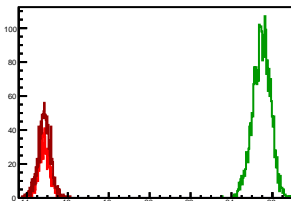
## Cycle 3, Sums

Entries: 2046	Entries: 4353	Entries: 1009
Mean: 14.9003 +/- 0.0062	Mean: 25.2175 +/- 0.0073	Mean: 14.7014 +/- 0.0108
Std Dev: 0.2821 +/- 0.0044	Std Dev: 0.4805 +/- 0.0051	Std Dev: 0.3438 +/- 0.0077



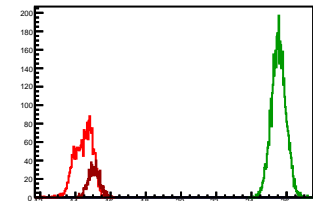
## Cycle 4, Sums

Entries: 1021	Entries: 2593	Entries: 1284
Mean: 14.8578 +/- 0.0085	Mean: 25.4696 +/- 0.0085	Mean: 14.8493 +/- 0.0086
Std Dev: 0.2711 +/- 0.0060	Std Dev: 0.4329 +/- 0.0060	Std Dev: 0.3080 +/- 0.0061



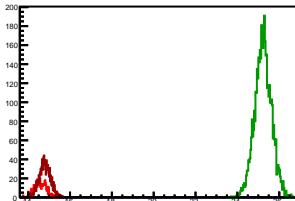
## Cycle 5, Sums

Entries: 2113	Entries: 4648	Entries: 1098
Mean: 14.4742 +/- 0.0109	Mean: 25.5454 +/- 0.0060	Mean: 15.0594 +/- 0.0098
Std Dev: 0.5022 +/- 0.0077	Std Dev: 0.4123 +/- 0.0043	Std Dev: 0.3249 +/- 0.0089



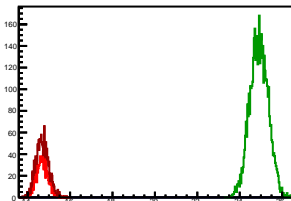
## Cycle 6, Sums

Entries: 567	Entries: 4623	Entries: 1082
Mean: 14.5803 +/- 0.0116	Mean: 25.2321 +/- 0.0059	Mean: 14.7919 +/- 0.0084
Std Dev: 0.2751 +/- 0.0082	Std Dev: 0.4020 +/- 0.0042	Std Dev: 0.2748 +/- 0.0059



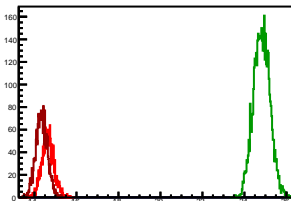
## Cycle 7, Sums

Entries: 1070	Entries: 4685	Entries: 1636
Mean: 14.6875 +/- 0.0084	Mean: 24.9101 +/- 0.0063	Mean: 14.6887 +/- 0.0074
Std Dev: 0.2764 +/- 0.0060	Std Dev: 0.4320 +/- 0.0045	Std Dev: 0.2999 +/- 0.0052



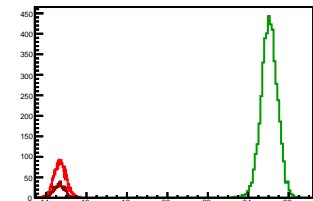
## Cycle 8, Sums

Entries: 1618	Entries: 4591	Entries: 2296
Mean: 14.6411 +/- 0.0072	Mean: 24.8232 +/- 0.0057	Mean: 14.3397 +/- 0.0058
Std Dev: 0.2891 +/- 0.0051	Std Dev: 0.3875 +/- 0.0040	Std Dev: 0.2758 +/- 0.0041



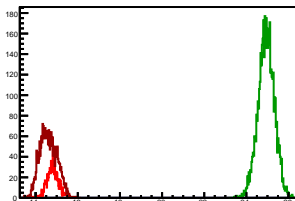
## Cycle 9, Sums

Entries: 2798	Entries: 4620	Entries: 963
Mean: 14.6921 +/- 0.0056	Mean: 25.0326 +/- 0.0062	Mean: 14.6505 +/- 0.0087
Std Dev: 0.2982 +/- 0.0040	Std Dev: 0.4214 +/- 0.0044	Std Dev: 0.2700 +/- 0.0062



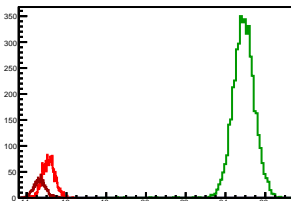
## Cycle 10, Sums

Entries: 988	Entries: 4688	Entries: 2344
Mean: 14.8072 +/- 0.0087	Mean: 24.9426 +/- 0.0057	Mean: 14.6067 +/- 0.0083
Std Dev: 0.2725 +/- 0.0061	Std Dev: 0.3869 +/- 0.0040	Std Dev: 0.4000 +/- 0.0058



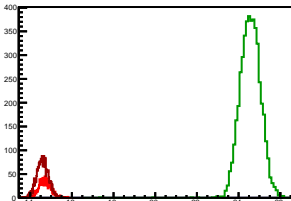
## Cycle 11, Sums

Entries: 2323	Entries: 4564	Entries: 1076
Mean: 15.1117 +/- 0.0064	Mean: 24.9169 +/- 0.0083	Mean: 14.6533 +/- 0.0090
Std Dev: 0.3087 +/- 0.0045	Std Dev: 0.5585 +/- 0.0058	Std Dev: 0.2942 +/- 0.0063



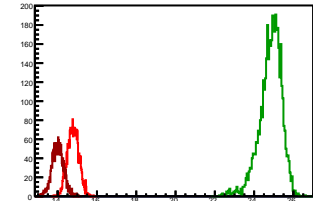
## Cycle 12, Sums

Entries: 1069	Entries: 4676	Entries: 2394
Mean: 14.7110 +/- 0.0089	Mean: 24.5633 +/- 0.0072	Mean: 14.5935 +/- 0.0058
Std Dev: 0.2894 +/- 0.0063	Std Dev: 0.4929 +/- 0.0051	Std Dev: 0.2841 +/- 0.0041



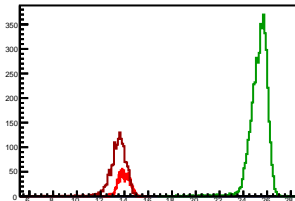
## Cycle 13, Sums

Entries: 2325	Entries: 4410	Entries: 1642
Mean: 14.7850 +/- 0.0060	Mean: 24.8340 +/- 0.0086	Mean: 14.0072 +/- 0.0074
Std Dev: 0.2904 +/- 0.0043	Std Dev: 0.5700 +/- 0.0061	Std Dev: 0.2996 +/- 0.0052



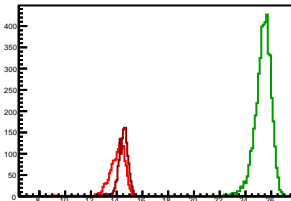
## Cycle 14, Sums

Entries: 1619	Entries: 4577	Entries: 1621
Mean: 13.9659 +/- 0.0114	Mean: 25.3025 +/- 0.0115	Mean: 13.4492 +/- 0.0190
Std Dev: 0.4587 +/- 0.0081	Std Dev: 0.7791 +/- 0.0081	Std Dev: 0.7639 +/- 0.0134



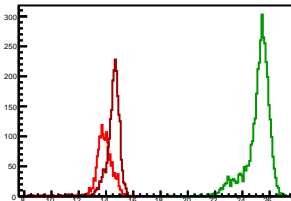
## Cycle 15, Sums

Entries: 1609	Entries: 4676	Entries: 1586
Mean: 14.0492 +/- 0.0169	Mean: 25.3412 +/- 0.0107	Mean: 14.5042 +/- 0.0116
Std Dev: 0.6777 +/- 0.0119	Std Dev: 0.7292 +/- 0.0075	Std Dev: 0.4616 +/- 0.0082



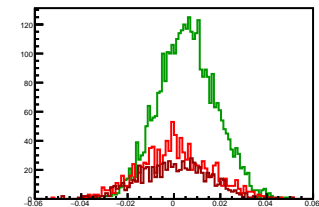
## Cycle 16, Sums

Entries: 1596	Entries: 3838	Entries: 2248
Mean: 13.8780 +/- 0.0159	Mean: 25.1390 +/- 0.0147	Mean: 14.4818 +/- 0.0144
Std Dev: 0.6337 +/- 0.0112	Std Dev: 0.9085 +/- 0.0104	Std Dev: 0.6842 +/- 0.0102



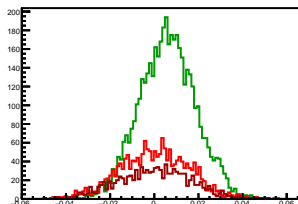
### Cycle 1, Asyms

Entries: 1094	Entries: 3563	Entries: 766
Mean: 0.0005 +/- 0.0005	Mean: 0.0057 +/- 0.0002	Mean: -0.0000 +/- 0.0005
Std Dev: 0.0153 +/- 0.0003	Std Dev: 0.0125 +/- 0.0001	Std Dev: 0.0150 +/- 0.0004



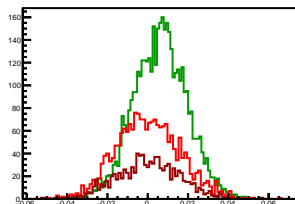
### Cycle 2, Asyms

Entries: 1826	Entries: 4613	Entries: 1074
Mean: -0.0000 +/- 0.0004	Mean: 0.0059 +/- 0.0002	Mean: -0.0001 +/- 0.0005
Std Dev: 0.0156 +/- 0.0003	Std Dev: 0.0128 +/- 0.0001	Std Dev: 0.0165 +/- 0.0004



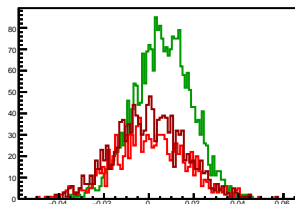
### Cycle 3, Asyms

Entries: 2046	Entries: 4353	Entries: 1009
Mean: 0.0001 +/- 0.0003	Mean: 0.0061 +/- 0.0002	Mean: 0.0002 +/- 0.0005
Std Dev: 0.0156 +/- 0.0002	Std Dev: 0.0132 +/- 0.0001	Std Dev: 0.0157 +/- 0.0003



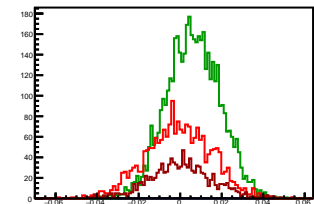
### Cycle 4, Asyms

Entries: 1021	Entries: 2593	Entries: 1284
Mean: 0.0001 +/- 0.0005	Mean: 0.0061 +/- 0.0003	Mean: 0.0001 +/- 0.0004
Std Dev: 0.0162 +/- 0.0004	Std Dev: 0.0128 +/- 0.0002	Std Dev: 0.0155 +/- 0.0003



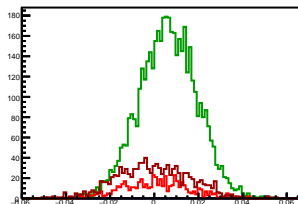
### Cycle 5, Asyms

Entries: 2113	Entries: 4648	Entries: 1098
Mean: -0.0008 +/- 0.0003	Mean: 0.0061 +/- 0.0002	Mean: 0.0003 +/- 0.0005
Std Dev: 0.0157 +/- 0.0002	Std Dev: 0.0129 +/- 0.0001	Std Dev: 0.0150 +/- 0.0003



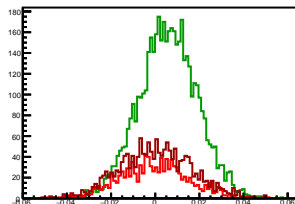
### Cycle 6, Asyms

Entries: 567	Entries: 4623	Entries: 1082
Mean: 0.0005 +/- 0.0006	Mean: 0.0062 +/- 0.0002	Mean: -0.0006 +/- 0.0005
Std Dev: 0.0151 +/- 0.0004	Std Dev: 0.0131 +/- 0.0001	Std Dev: 0.0164 +/- 0.0004



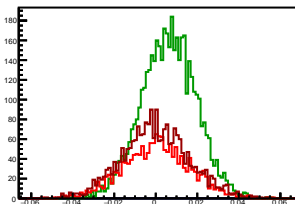
### Cycle 7, Asyms

Entries: 1070	Entries: 4685	Entries: 1636
Mean: -0.0005 +/- 0.0005	Mean: 0.0058 +/- 0.0002	Mean: 0.0001 +/- 0.0004
Std Dev: 0.0154 +/- 0.0003	Std Dev: 0.0132 +/- 0.0001	Std Dev: 0.0161 +/- 0.0004



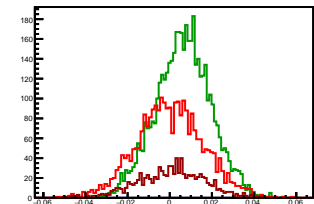
### Cycle 8, Asyms

Entries: 1618	Entries: 4591	Entries: 2296
Mean: 0.0003 +/- 0.0004	Mean: 0.0062 +/- 0.0002	Mean: -0.0000 +/- 0.0003
Std Dev: 0.0161 +/- 0.0003	Std Dev: 0.0131 +/- 0.0001	Std Dev: 0.0163 +/- 0.0002



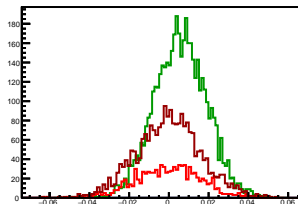
### Cycle 9, Asyms

Entries: 2798	Entries: 4620	Entries: 963
Mean: 0.0002 +/- 0.0003	Mean: 0.0063 +/- 0.0002	Mean: 0.0006 +/- 0.0005
Std Dev: 0.0159 +/- 0.0002	Std Dev: 0.0131 +/- 0.0001	Std Dev: 0.0156 +/- 0.0004



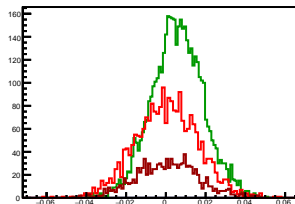
### Cycle 10, Asyms

Entries: 988	Entries: 4688	Entries: 2344
Mean: -0.0003 +/- 0.0005	Mean: 0.0058 +/- 0.0002	Mean: -0.0001 +/- 0.0003
Std Dev: 0.0162 +/- 0.0004	Std Dev: 0.0132 +/- 0.0001	Std Dev: 0.0164 +/- 0.0002



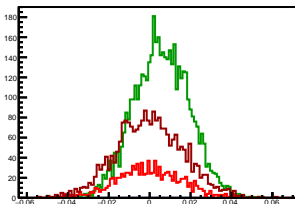
### Cycle 11, Asyms

Entries: 2323	Entries: 4564	Entries: 1076
Mean: 0.0003 +/- 0.0003	Mean: 0.0058 +/- 0.0002	Mean: 0.0009 +/- 0.0005
Std Dev: 0.0157 +/- 0.0002	Std Dev: 0.0130 +/- 0.0001	Std Dev: 0.0156 +/- 0.0003



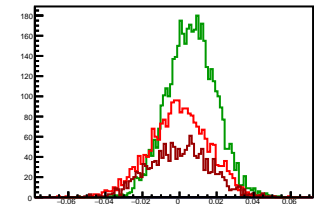
### Cycle 12, Asyms

Entries: 1069	Entries: 4676	Entries: 2394
Mean: -0.0003 +/- 0.0005	Mean: 0.0059 +/- 0.0002	Mean: 0.0000 +/- 0.0003
Std Dev: 0.0158 +/- 0.0003	Std Dev: 0.0134 +/- 0.0001	Std Dev: 0.0164 +/- 0.0002



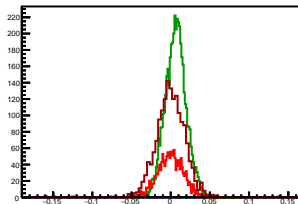
### Cycle 13, Asyms

Entries: 2325	Entries: 4410	Entries: 1642
Mean: -0.0003 +/- 0.0003	Mean: 0.0064 +/- 0.0002	Mean: -0.0001 +/- 0.0004
Std Dev: 0.0158 +/- 0.0002	Std Dev: 0.0131 +/- 0.0001	Std Dev: 0.0165 +/- 0.0003



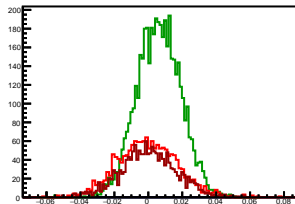
### Cycle 14, Asyms

Entries: 1619	Entries: 4577	Entries: 1621
Mean: -0.0002 +/- 0.0004	Mean: 0.0062 +/- 0.0002	Mean: -0.0002 +/- 0.0005
Std Dev: 0.0164 +/- 0.0003	Std Dev: 0.0133 +/- 0.0001	Std Dev: 0.0191 +/- 0.0003



### Cycle 15, Asyms

Entries: 1609	Entries: 4676	Entries: 1586
Mean: -0.0005 +/- 0.0004	Mean: 0.0061 +/- 0.0002	Mean: 0.0004 +/- 0.0004
Std Dev: 0.0174 +/- 0.0003	Std Dev: 0.0130 +/- 0.0001	Std Dev: 0.0164 +/- 0.0003



### Cycle 16, Asyms

Entries: 1596	Entries: 3838	Entries: 2248
Mean: -0.0006 +/- 0.0004	Mean: 0.0061 +/- 0.0002	Mean: 0.0000 +/- 0.0004
Std Dev: 0.0175 +/- 0.0003	Std Dev: 0.0133 +/- 0.0002	Std Dev: 0.0174 +/- 0.0003

