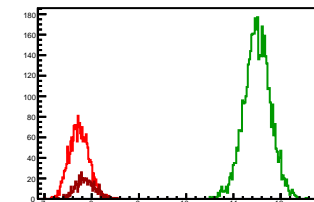


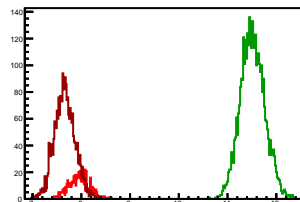
Cycle 1, PosHel

Entries: 2148	Entries: 4589	Entries: 619
Mean: 7.7301 +/- 0.0044	Mean: 11.5040 +/- 0.0042	Mean: 7.8663 +/- 0.0083
Std Dev: 0.2056 +/- 0.0031	Std Dev: 0.2821 +/- 0.0029	Std Dev: 0.2065 +/- 0.0059



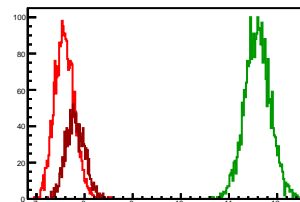
Cycle 2, PosHel

Entries: 619	Entries: 3780	Entries: 2509
Mean: 7.9490 +/- 0.0083	Mean: 11.5139 +/- 0.0041	Mean: 7.6600 +/- 0.0042
Std Dev: 0.2069 +/- 0.0059	Std Dev: 0.2509 +/- 0.0029	Std Dev: 0.2118 +/- 0.0030



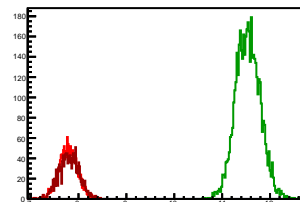
Cycle 3, PosHel

Entries: 2505	Entries: 2852	Entries: 1485
Mean: 7.5832 +/- 0.0041	Mean: 11.5935 +/- 0.0050	Mean: 7.8088 +/- 0.0051
Std Dev: 0.2071 +/- 0.0029	Std Dev: 0.2694 +/- 0.0036	Std Dev: 0.1950 +/- 0.0036



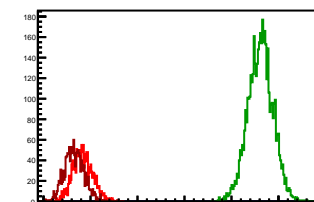
Cycle 4, PosHel

Entries: 1508	Entries: 4646	Entries: 1394
Mean: 7.7882 +/- 0.0051	Mean: 11.5384 +/- 0.0038	Mean: 7.7992 +/- 0.0055
Std Dev: 0.1976 +/- 0.0036	Std Dev: 0.2565 +/- 0.0027	Std Dev: 0.2069 +/- 0.0039



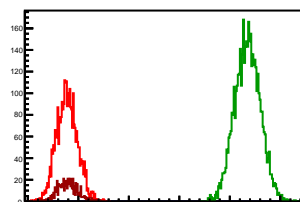
Cycle 5, PosHel

Entries: 1417	Entries: 4566	Entries: 1407
Mean: 7.8350 +/- 0.0056	Mean: 11.6164 +/- 0.0039	Mean: 7.6555 +/- 0.0055
Std Dev: 0.2120 +/- 0.0040	Std Dev: 0.2666 +/- 0.0028	Std Dev: 0.2074 +/- 0.0039



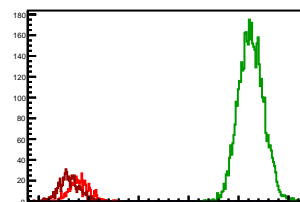
Cycle 6, PosHel

Entries: 2998	Entries: 4618	Entries: 608
Mean: 7.7749 +/- 0.0037	Mean: 11.3504 +/- 0.0037	Mean: 7.7891 +/- 0.0080
Std Dev: 0.2052 +/- 0.0027	Std Dev: 0.2510 +/- 0.0026	Std Dev: 0.1976 +/- 0.0057



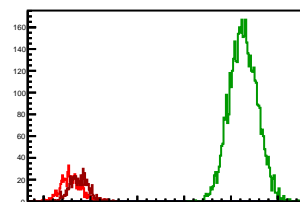
Cycle 7, PosHel

Entries: 604	Entries: 4665	Entries: 693
Mean: 7.8128 +/- 0.0080	Mean: 11.2507 +/- 0.0037	Mean: 7.6097 +/- 0.0079
Std Dev: 0.1975 +/- 0.0057	Std Dev: 0.2499 +/- 0.0028	Std Dev: 0.2078 +/- 0.0056



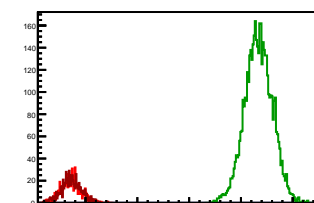
Cycle 8, PosHel

Entries: 664	Entries: 4628	Entries: 707
Mean: 7.5850 +/- 0.0085	Mean: 11.2637 +/- 0.0044	Mean: 7.7621 +/- 0.0076
Std Dev: 0.2195 +/- 0.0060	Std Dev: 0.2983 +/- 0.0031	Std Dev: 0.2017 +/- 0.0054



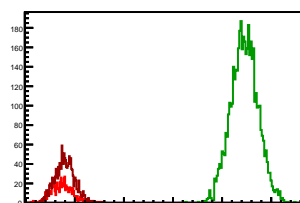
Cycle 9, PosHel

Entries: 683	Entries: 4665	Entries: 685
Mean: 7.7198 +/- 0.0073	Mean: 11.3402 +/- 0.0039	Mean: 7.7248 +/- 0.0074
Std Dev: 0.1910 +/- 0.0052	Std Dev: 0.2667 +/- 0.0028	Std Dev: 0.1944 +/- 0.0053



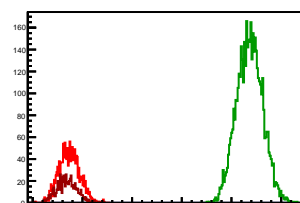
Cycle 10, PosHel

Entries: 660	Entries: 4647	Entries: 1448
Mean: 7.7247 +/- 0.0080	Mean: 11.4553 +/- 0.0040	Mean: 7.7955 +/- 0.0052
Std Dev: 0.2057 +/- 0.0057	Std Dev: 0.2759 +/- 0.0029	Std Dev: 0.1970 +/- 0.0037



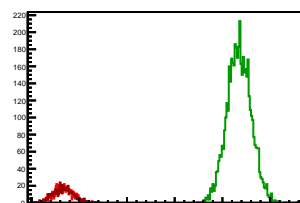
Cycle 11, PosHel

Entries: 1529	Entries: 4651	Entries: 647
Mean: 7.7372 +/- 0.0052	Mean: 11.3660 +/- 0.0038	Mean: 7.6866 +/- 0.0081
Std Dev: 0.2051 +/- 0.0037	Std Dev: 0.2592 +/- 0.0027	Std Dev: 0.2051 +/- 0.0057



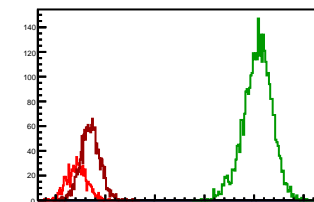
Cycle 12, PosHel

Entries: 631	Entries: 4718	Entries: 594
Mean: 7.6702 +/- 0.0080	Mean: 11.3504 +/- 0.0037	Mean: 7.6702 +/- 0.0088
Std Dev: 0.2020 +/- 0.0057	Std Dev: 0.2517 +/- 0.0026	Std Dev: 0.2139 +/- 0.0062



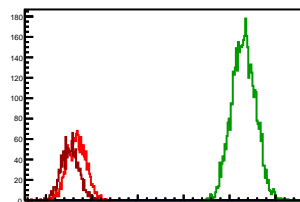
Cycle 13, PosHel

Entries: 875	Entries: 3500	Entries: 1624
Mean: 7.4291 +/- 0.0066	Mean: 11.0709 +/- 0.0049	Mean: 7.6972 +/- 0.0048
Std Dev: 0.1954 +/- 0.0047	Std Dev: 0.2907 +/- 0.0035	Std Dev: 0.1950 +/- 0.0034



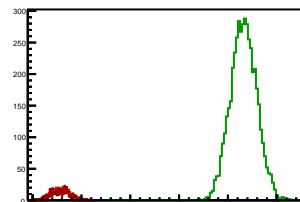
Cycle 14, PosHel

Entries: 1664	Entries: 4630	Entries: 1535
Mean: 7.6696 +/- 0.0051	Mean: 11.3060 +/- 0.0038	Mean: 7.5276 +/- 0.0050
Std Dev: 0.2072 +/- 0.0036	Std Dev: 0.2578 +/- 0.0027	Std Dev: 0.1954 +/- 0.0035



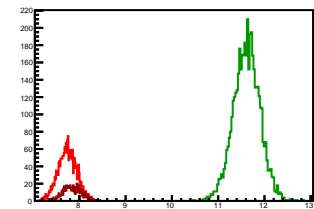
Cycle 15, PosHel

Entries: 600	Entries: 4668	Entries: 591
Mean: 7.5818 +/- 0.0078	Mean: 11.3218 +/- 0.0040	Mean: 7.5758 +/- 0.0083
Std Dev: 0.1915 +/- 0.0055	Std Dev: 0.2701 +/- 0.0028	Std Dev: 0.2008 +/- 0.0058



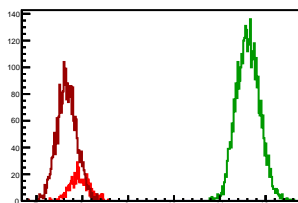
Cycle 1, NegHel

Entries: 2148	Entries: 4589	Entries: 619
Mean: 7.7431 +/- 0.0044	Mean: 11.6146 +/- 0.0042	Mean: 7.8492 +/- 0.0078
Std Dev: 0.2027 +/- 0.0031	Std Dev: 0.2856 +/- 0.0030	Std Dev: 0.1934 +/- 0.0055



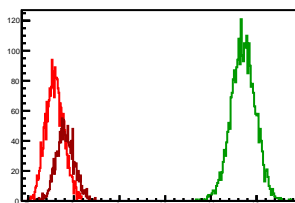
Cycle 2, NegHel

Entries: 619	Entries: 3780	Entries: 2509
Mean: 7.9338 +/- 0.0085	Mean: 11.6165 +/- 0.0041	Mean: 7.6628 +/- 0.0044
Std Dev: 0.2105 +/- 0.0060	Std Dev: 0.2549 +/- 0.0029	Std Dev: 0.2191 +/- 0.0031



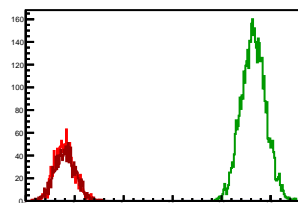
Cycle 3, NegHel

Entries: 2505	Entries: 2852	Entries: 1485
Mean: 7.5836 +/- 0.0040	Mean: 11.7094 +/- 0.0051	Mean: 7.8135 +/- 0.0051
Std Dev: 0.2000 +/- 0.0028	Std Dev: 0.2699 +/- 0.0036	Std Dev: 0.1984 +/- 0.0036



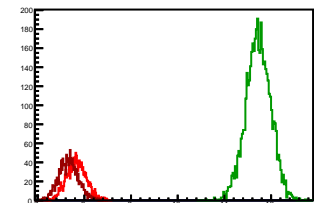
Cycle 4, NegHel

Entries: 1508	Entries: 4646	Entries: 1394
Mean: 7.7922 +/- 0.0052	Mean: 11.6503 +/- 0.0036	Mean: 7.8031 +/- 0.0058
Std Dev: 0.2037 +/- 0.0037	Std Dev: 0.2481 +/- 0.0026	Std Dev: 0.2171 +/- 0.0041



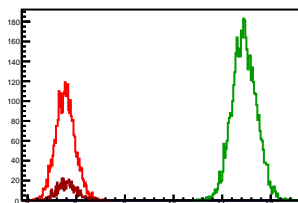
Cycle 5, NegHel

Entries: 1417	Entries: 4566	Entries: 1407
Mean: 7.8292 +/- 0.0056	Mean: 11.7258 +/- 0.0040	Mean: 7.6653 +/- 0.0056
Std Dev: 0.2113 +/- 0.0040	Std Dev: 0.2684 +/- 0.0028	Std Dev: 0.2090 +/- 0.0039



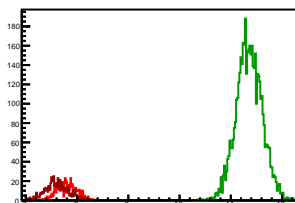
Cycle 6, NegHel

Entries: 2998	Entries: 4618	Entries: 608
Mean: 7.7756 +/- 0.0037	Mean: 11.4550 +/- 0.0037	Mean: 7.8065 +/- 0.0081
Std Dev: 0.2034 +/- 0.0026	Std Dev: 0.2520 +/- 0.0026	Std Dev: 0.1997 +/- 0.0057



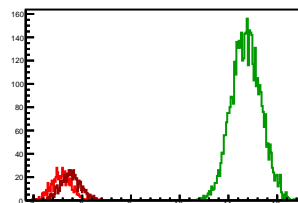
Cycle 7, NegHel

Entries: 604	Entries: 4665	Entries: 693
Mean: 7.7975 +/- 0.0078	Mean: 11.3586 +/- 0.0037	Mean: 7.6018 +/- 0.0083
Std Dev: 0.1922 +/- 0.0055	Std Dev: 0.2506 +/- 0.0026	Std Dev: 0.2175 +/- 0.0058



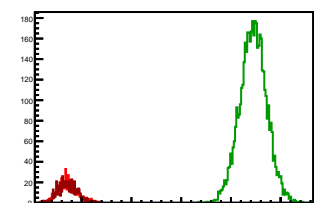
Cycle 8, NegHel

Entries: 664	Entries: 4628	Entries: 707
Mean: 7.5778 +/- 0.0079	Mean: 11.3651 +/- 0.0044	Mean: 7.7610 +/- 0.0076
Std Dev: 0.2024 +/- 0.0056	Std Dev: 0.3021 +/- 0.0031	Std Dev: 0.2032 +/- 0.0054



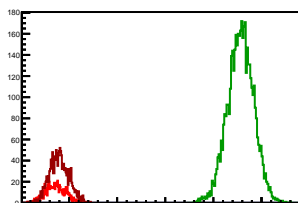
Cycle 9, NegHel

Entries: 683	Entries: 4665	Entries: 685
Mean: 7.7142 +/- 0.0073	Mean: 11.4471 +/- 0.0039	Mean: 7.7193 +/- 0.0074
Std Dev: 0.1912 +/- 0.0052	Std Dev: 0.2695 +/- 0.0028	Std Dev: 0.1945 +/- 0.0053



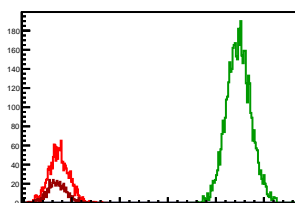
Cycle 10, NegHel

Entries: 660	Entries: 4647	Entries: 1448
Mean: 7.7175 +/- 0.0080	Mean: 11.5654 +/- 0.0040	Mean: 7.7926 +/- 0.0053
Std Dev: 0.2052 +/- 0.0056	Std Dev: 0.2716 +/- 0.0028	Std Dev: 0.2011 +/- 0.0037



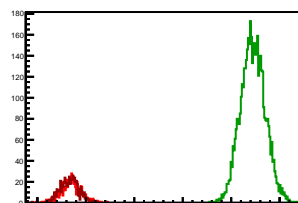
Cycle 11, NegHel

Entries: 1529	Entries: 4651	Entries: 647
Mean: 7.7330 +/- 0.0054	Mean: 11.4750 +/- 0.0037	Mean: 7.6939 +/- 0.0078
Std Dev: 0.2105 +/- 0.0038	Std Dev: 0.2537 +/- 0.0026	Std Dev: 0.1975 +/- 0.0055



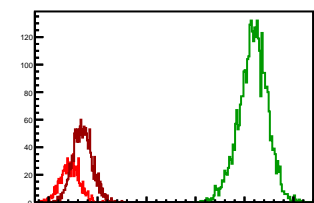
Cycle 12, NegHel

Entries: 631	Entries: 4718	Entries: 594
Mean: 7.6913 +/- 0.0082	Mean: 11.4473 +/- 0.0037	Mean: 7.6677 +/- 0.0081
Std Dev: 0.2068 +/- 0.0058	Std Dev: 0.2528 +/- 0.0026	Std Dev: 0.1965 +/- 0.0057



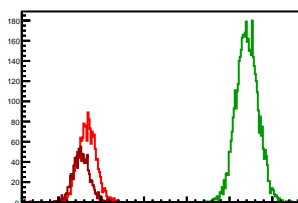
Cycle 13, NegHel

Entries: 875	Entries: 3500	Entries: 1624
Mean: 7.4351 +/- 0.0065	Mean: 11.1746 +/- 0.0050	Mean: 7.6937 +/- 0.0049
Std Dev: 0.1928 +/- 0.0046	Std Dev: 0.2930 +/- 0.0035	Std Dev: 0.1982 +/- 0.0035



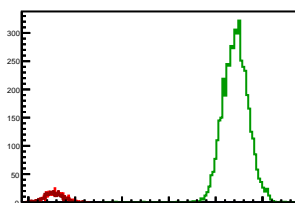
Cycle 14, NegHel

Entries: 1664	Entries: 4630	Entries: 1535
Mean: 7.6740 +/- 0.0052	Mean: 11.4119 +/- 0.0038	Mean: 7.5313 +/- 0.0050
Std Dev: 0.2127 +/- 0.0037	Std Dev: 0.2560 +/- 0.0027	Std Dev: 0.1965 +/- 0.0035



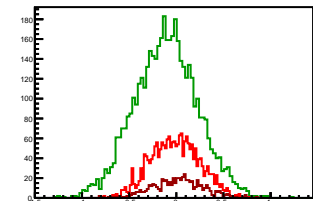
Cycle 15, NegHel

Entries: 600	Entries: 4668	Entries: 591
Mean: 7.5795 +/- 0.0081	Mean: 11.4261 +/- 0.0039	Mean: 7.5433 +/- 0.0080
Std Dev: 0.1990 +/- 0.0057	Std Dev: 0.2688 +/- 0.0028	Std Dev: 0.1954 +/- 0.0057



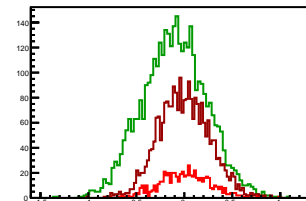
Cycle 1, Diffs

Entries: 2148	Entries: 4589	Entries: 619
Mean: -0.0130 +/- 0.0056	Mean: -0.1106 +/- 0.0049	Mean: 0.0170 +/- 0.0107
Std Dev: 0.2588 +/- 0.0039	Std Dev: 0.3339 +/- 0.0035	Std Dev: 0.2665 +/- 0.0076



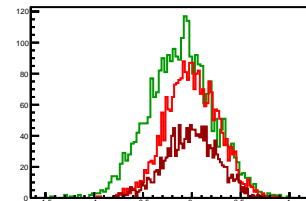
Cycle 2, Diffs

Entries: 619	Entries: 3780	Entries: 2509
Mean: 0.0152 +/- 0.0108	Mean: -0.1026 +/- 0.0054	Mean: -0.0028 +/- 0.0053
Std Dev: 0.2684 +/- 0.0076	Std Dev: 0.3320 +/- 0.0038	Std Dev: 0.2666 +/- 0.0038



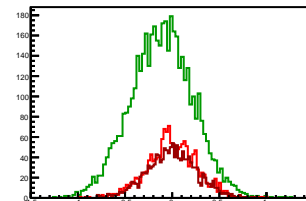
Cycle 3, Diffs

Entries: 2505	Entries: 2852	Entries: 1485
Mean: -0.0003 +/- 0.0053	Mean: -0.1159 +/- 0.0062	Mean: -0.0047 +/- 0.0068
Std Dev: 0.2646 +/- 0.0037	Std Dev: 0.3324 +/- 0.0044	Std Dev: 0.2635 +/- 0.0048



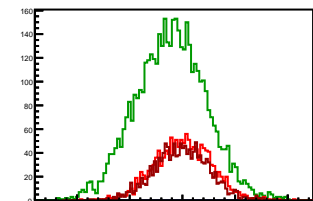
Cycle 4, Diffs

Entries: 1508	Entries: 4646	Entries: 1394
Mean: -0.0040 +/- 0.0067	Mean: -0.1118 +/- 0.0048	Mean: -0.0039 +/- 0.0071
Std Dev: 0.2607 +/- 0.0047	Std Dev: 0.3300 +/- 0.0034	Std Dev: 0.2640 +/- 0.0050



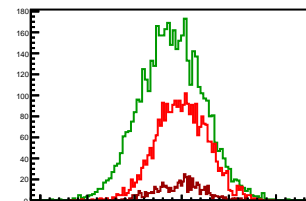
Cycle 5, Diffs

Entries: 1417	Entries: 4566	Entries: 1407
Mean: 0.0059 +/- 0.0071	Mean: -0.1094 +/- 0.0049	Mean: -0.0098 +/- 0.0069
Std Dev: 0.2674 +/- 0.0050	Std Dev: 0.3331 +/- 0.0035	Std Dev: 0.2572 +/- 0.0048



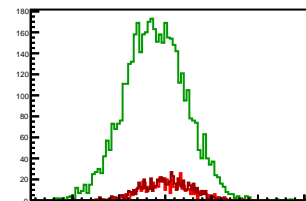
Cycle 6, Diffs

Entries: 2998	Entries: 4618	Entries: 608
Mean: -0.0006 +/- 0.0049	Mean: -0.1046 +/- 0.0049	Mean: -0.0174 +/- 0.0100
Std Dev: 0.2703 +/- 0.0035	Std Dev: 0.3315 +/- 0.0034	Std Dev: 0.2477 +/- 0.0071



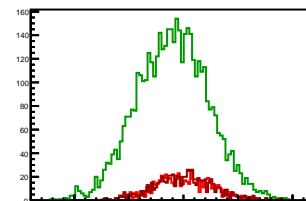
Cycle 7, Diffs

Entries: 604	Entries: 4665	Entries: 693
Mean: 0.0153 +/- 0.0105	Mean: -0.1079 +/- 0.0048	Mean: 0.0079 +/- 0.0101
Std Dev: 0.2590 +/- 0.0075	Std Dev: 0.3262 +/- 0.0034	Std Dev: 0.2649 +/- 0.0071



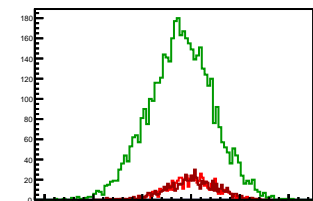
Cycle 8, Diffs

Entries: 664	Entries: 4628	Entries: 707
Mean: 0.0072 +/- 0.0102	Mean: -0.1014 +/- 0.0048	Mean: 0.0011 +/- 0.0103
Std Dev: 0.2623 +/- 0.0072	Std Dev: 0.3271 +/- 0.0034	Std Dev: 0.2734 +/- 0.0073



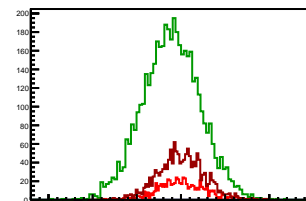
Cycle 9, Diffs

Entries: 683	Entries: 4665	Entries: 685
Mean: 0.0057 +/- 0.0093	Mean: -0.1069 +/- 0.0048	Mean: 0.0055 +/- 0.0099
Std Dev: 0.2426 +/- 0.0066	Std Dev: 0.3302 +/- 0.0034	Std Dev: 0.2592 +/- 0.0070



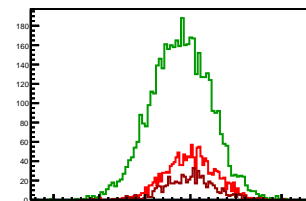
Cycle 10, Diffs

Entries: 660	Entries: 4647	Entries: 1448
Mean: 0.0072 +/- 0.0101	Mean: -0.1101 +/- 0.0048	Mean: 0.0029 +/- 0.0069
Std Dev: 0.2586 +/- 0.0071	Std Dev: 0.3262 +/- 0.0034	Std Dev: 0.2626 +/- 0.0049



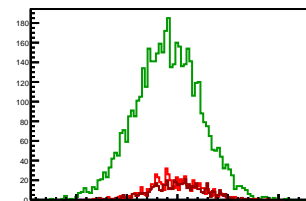
Cycle 11, Diffs

Entries: 1529	Entries: 4651	Entries: 647
Mean: 0.0043 +/- 0.0069	Mean: -0.1090 +/- 0.0048	Mean: -0.0073 +/- 0.0108
Std Dev: 0.2710 +/- 0.0049	Std Dev: 0.3289 +/- 0.0034	Std Dev: 0.2759 +/- 0.0077



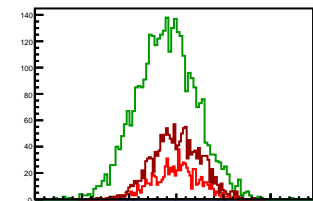
Cycle 12, Diffs

Entries: 631	Entries: 4718	Entries: 594
Mean: -0.0211 +/- 0.0105	Mean: -0.0969 +/- 0.0047	Mean: 0.0025 +/- 0.0108
Std Dev: 0.2649 +/- 0.0075	Std Dev: 0.3212 +/- 0.0033	Std Dev: 0.2621 +/- 0.0076



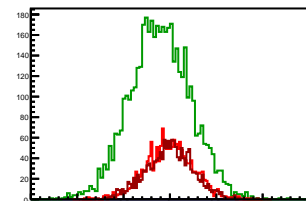
Cycle 13, Diffs

Entries: 875	Entries: 3500	Entries: 1624
Mean: -0.0060 +/- 0.0085	Mean: -0.1037 +/- 0.0054	Mean: 0.0036 +/- 0.0064
Std Dev: 0.2502 +/- 0.0060	Std Dev: 0.3182 +/- 0.0038	Std Dev: 0.2583 +/- 0.0045



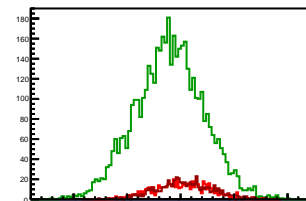
Cycle 14, Diffs

Entries: 1664	Entries: 4630	Entries: 1535
Mean: -0.0044 +/- 0.0063	Mean: -0.1059 +/- 0.0048	Mean: -0.0038 +/- 0.0065
Std Dev: 0.2579 +/- 0.0045	Std Dev: 0.3260 +/- 0.0034	Std Dev: 0.2565 +/- 0.0046



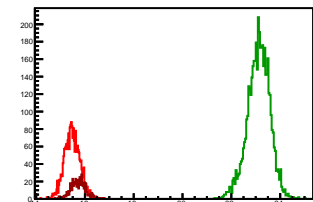
Cycle 15, Diffs

Entries: 600	Entries: 4668	Entries: 591
Mean: 0.0023 +/- 0.0107	Mean: -0.1043 +/- 0.0047	Mean: 0.0325 +/- 0.0108
Std Dev: 0.2617 +/- 0.0076	Std Dev: 0.3191 +/- 0.0033	Std Dev: 0.2618 +/- 0.0076



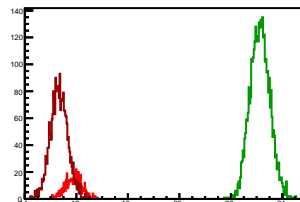
Cycle 1, Sums

Entries: 2148	Entries: 4589	Entries: 619
Mean: 15.4733 \pm 0.0068	Mean: 23.1187 \pm 0.0068	Mean: 15.7155 \pm 0.0120
Std Dev: 0.3159 \pm 0.0048	Std Dev: 0.4592 \pm 0.0048	Std Dev: 0.2984 \pm 0.0085



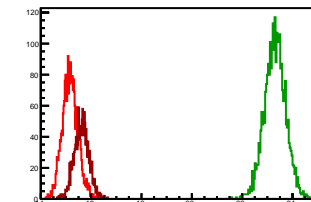
Cycle 2, Sums

Entries: 619	Entries: 3780	Entries: 2509
Mean: 15.8829 \pm 0.0129	Mean: 23.1304 \pm 0.0062	Mean: 15.3228 \pm 0.0068
Std Dev: 0.3197 \pm 0.0091	Std Dev: 0.3816 \pm 0.0044	Std Dev: 0.3385 \pm 0.0048



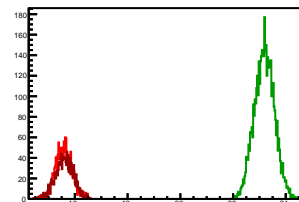
Cycle 3, Sums

Entries: 2505	Entries: 2852	Entries: 1485
Mean: 15.1668 \pm 0.0062	Mean: 23.3029 \pm 0.0080	Mean: 15.6224 \pm 0.0076
Std Dev: 0.3094 \pm 0.0044	Std Dev: 0.4246 \pm 0.0056	Std Dev: 0.2922 \pm 0.0054



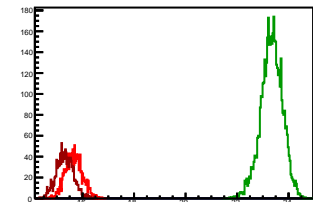
Cycle 4, Sums

Entries: 1508	Entries: 4646	Entries: 1394
Mean: 15.5805 \pm 0.0079	Mean: 23.1887 \pm 0.0056	Mean: 15.6023 \pm 0.0089
Std Dev: 0.3051 \pm 0.0056	Std Dev: 0.3819 \pm 0.0040	Std Dev: 0.3320 \pm 0.0063



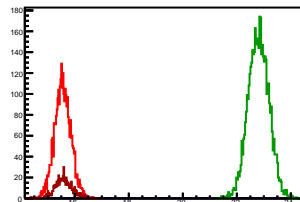
Cycle 5, Sums

Entries: 1417	Entries: 4566	Entries: 1407
Mean: 15.6642 \pm 0.0087	Mean: 23.3423 \pm 0.0062	Mean: 15.3208 \pm 0.0087
Std Dev: 0.3283 \pm 0.0062	Std Dev: 0.4186 \pm 0.0044	Std Dev: 0.3275 \pm 0.0062



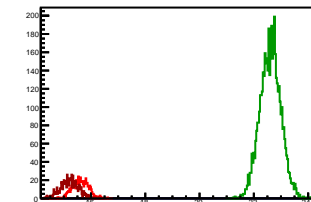
Cycle 6, Sums

Entries: 2998	Entries: 4618	Entries: 608
Mean: 15.5505 \pm 0.0056	Mean: 22.8054 \pm 0.0056	Mean: 15.5956 \pm 0.0126
Std Dev: 0.3065 \pm 0.0040	Std Dev: 0.3784 \pm 0.0039	Std Dev: 0.3106 \pm 0.0089



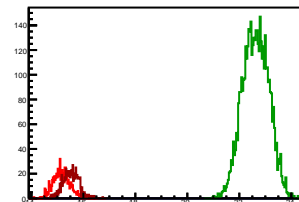
Cycle 7, Sums

Entries: 604	Entries: 4665	Entries: 693
Mean: 15.6103 \pm 0.0119	Mean: 22.6094 \pm 0.0056	Mean: 15.2115 \pm 0.0126
Std Dev: 0.2913 \pm 0.0084	Std Dev: 0.3796 \pm 0.0039	Std Dev: 0.3329 \pm 0.0089



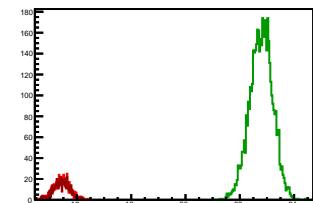
Cycle 8, Sums

Entries: 664	Entries: 4628	Entries: 707
Mean: 15.1629 \pm 0.0128	Mean: 22.6288 \pm 0.0074	Mean: 15.5230 \pm 0.0112
Std Dev: 0.3310 \pm 0.0091	Std Dev: 0.5034 \pm 0.0052	Std Dev: 0.2988 \pm 0.0079



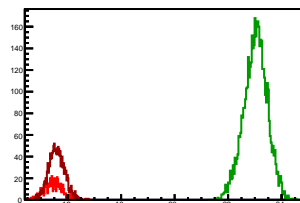
Cycle 9, Sums

Entries: 683	Entries: 4665	Entries: 685
Mean: 15.4340 \pm 0.0113	Mean: 22.7874 \pm 0.0062	Mean: 15.4442 \pm 0.0111
Std Dev: 0.2954 \pm 0.0080	Std Dev: 0.4224 \pm 0.0044	Std Dev: 0.2899 \pm 0.0078



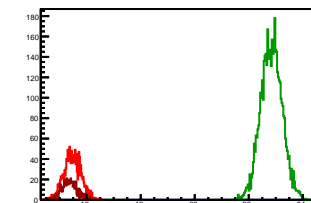
Cycle 10, Sums

Entries: 660	Entries: 4647	Entries: 1448
Mean: 15.4422 \pm 0.0124	Mean: 23.0207 \pm 0.0064	Mean: 15.5881 \pm 0.0079
Std Dev: 0.3194 \pm 0.0088	Std Dev: 0.4397 \pm 0.0046	Std Dev: 0.2992 \pm 0.0056



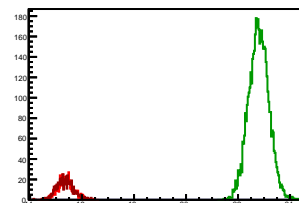
Cycle 11, Sums

Entries: 1529	Entries: 4651	Entries: 647
Mean: 15.4702 \pm 0.0081	Mean: 22.8410 \pm 0.0058	Mean: 15.3806 \pm 0.0115
Std Dev: 0.3152 \pm 0.0057	Std Dev: 0.3935 \pm 0.0041	Std Dev: 0.2933 \pm 0.0082



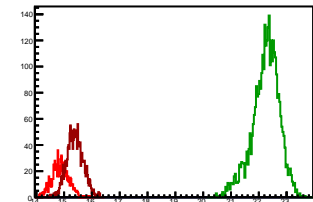
Cycle 12, Sums

Entries: 631	Entries: 4718	Entries: 594
Mean: 15.3615 \pm 0.0124	Mean: 22.7977 \pm 0.0057	Mean: 15.3379 \pm 0.0130
Std Dev: 0.3113 \pm 0.0088	Std Dev: 0.3891 \pm 0.0040	Std Dev: 0.3163 \pm 0.0092



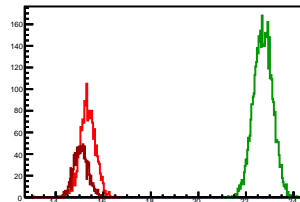
Cycle 13, Sums

Entries: 875	Entries: 3500	Entries: 1624
Mean: 14.8641 \pm 0.0100	Mean: 22.2454 \pm 0.0083	Mean: 15.3909 \pm 0.0074
Std Dev: 0.2968 \pm 0.0071	Std Dev: 0.4893 \pm 0.0058	Std Dev: 0.2964 \pm 0.0052



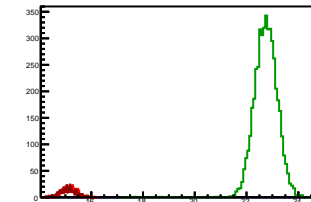
Cycle 14, Sums

Entries: 1664	Entries: 4630	Entries: 1535
Mean: 15.3435 \pm 0.0081	Mean: 22.7180 \pm 0.0058	Mean: 15.0589 \pm 0.0076
Std Dev: 0.3314 \pm 0.0057	Std Dev: 0.3971 \pm 0.0041	Std Dev: 0.2963 \pm 0.0053



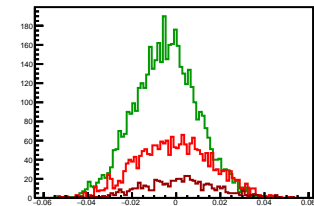
Cycle 15, Sums

Entries: 600	Entries: 4668	Entries: 591
Mean: 15.1613 \pm 0.0118	Mean: 22.7480 \pm 0.0064	Mean: 15.1191 \pm 0.0122
Std Dev: 0.2900 \pm 0.0084	Std Dev: 0.4343 \pm 0.0045	Std Dev: 0.2974 \pm 0.0087



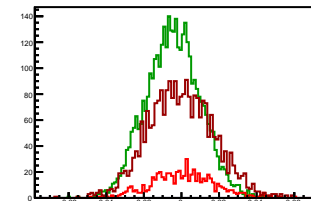
Cycle 1, Asyms

Entries: 2148	Entries: 4589	Entries: 619
Mean: -0.0008 +/- 0.0004	Mean: -0.0048 +/- 0.0002	Mean: 0.0011 +/- 0.0007
Std Dev: 0.0167 +/- 0.0003	Std Dev: 0.0144 +/- 0.0002	Std Dev: 0.0169 +/- 0.0005



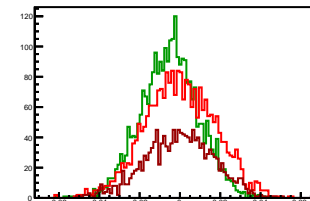
Cycle 2, Asyms

Entries: 619	Entries: 3780	Entries: 2509
Mean: 0.0010 +/- 0.0007	Mean: -0.0044 +/- 0.0002	Mean: -0.0002 +/- 0.0003
Std Dev: 0.0169 +/- 0.0005	Std Dev: 0.0143 +/- 0.0002	Std Dev: 0.0174 +/- 0.0002



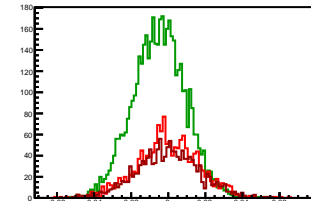
Cycle 3, Asyms

Entries: 2505	Entries: 2852	Entries: 1485
Mean: -0.0000 +/- 0.0003	Mean: -0.0050 +/- 0.0003	Mean: -0.0003 +/- 0.0004
Std Dev: 0.0174 +/- 0.0002	Std Dev: 0.0143 +/- 0.0002	Std Dev: 0.0168 +/- 0.0003



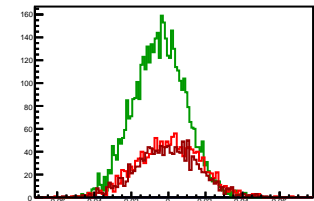
Cycle 4, Asyms

Entries: 1508	Entries: 4646	Entries: 1394
Mean: -0.0002 +/- 0.0004	Mean: -0.0048 +/- 0.0002	Mean: -0.0002 +/- 0.0005
Std Dev: 0.0167 +/- 0.0003	Std Dev: 0.0142 +/- 0.0001	Std Dev: 0.0169 +/- 0.0005



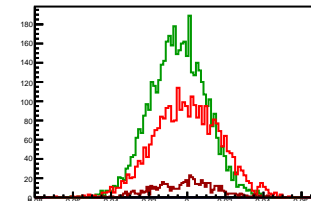
Cycle 5, Asyms

Entries: 1417	Entries: 4566	Entries: 1407
Mean: 0.0004 +/- 0.0005	Mean: -0.0047 +/- 0.0002	Mean: -0.0006 +/- 0.0004
Std Dev: 0.0170 +/- 0.0003	Std Dev: 0.0143 +/- 0.0001	Std Dev: 0.0167 +/- 0.0003



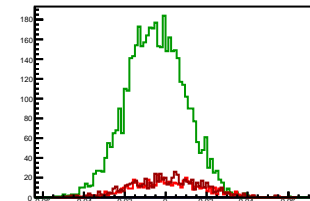
Cycle 6, Asyms

Entries: 2998	Entries: 4618	Entries: 608
Mean: -0.0000 +/- 0.0003	Mean: -0.0046 +/- 0.0002	Mean: -0.0011 +/- 0.0006
Std Dev: 0.0174 +/- 0.0002	Std Dev: 0.0145 +/- 0.0002	Std Dev: 0.0159 +/- 0.0005



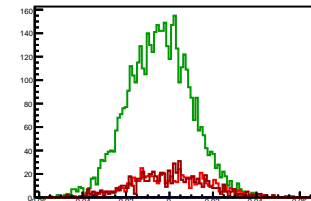
Cycle 7, Asyms

Entries: 604	Entries: 4665	Entries: 693
Mean: 0.0010 +/- 0.0007	Mean: -0.0048 +/- 0.0002	Mean: 0.0005 +/- 0.0007
Std Dev: 0.0166 +/- 0.0005	Std Dev: 0.0144 +/- 0.0001	Std Dev: 0.0174 +/- 0.0005



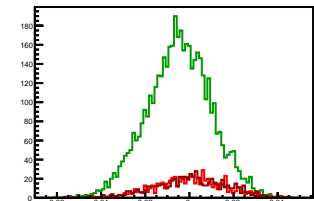
Cycle 8, Asyms

Entries: 664	Entries: 4628	Entries: 707
Mean: 0.0004 +/- 0.0007	Mean: -0.0045 +/- 0.0002	Mean: 0.0001 +/- 0.0007
Std Dev: 0.0173 +/- 0.0005	Std Dev: 0.0144 +/- 0.0002	Std Dev: 0.0176 +/- 0.0005



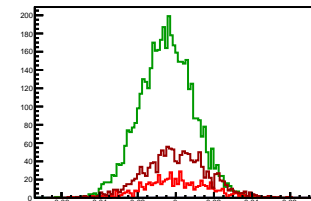
Cycle 9, Asyms

Entries: 683	Entries: 4665	Entries: 685
Mean: 0.0004 +/- 0.0006	Mean: -0.0047 +/- 0.0002	Mean: 0.0004 +/- 0.0006
Std Dev: 0.0157 +/- 0.0004	Std Dev: 0.0145 +/- 0.0001	Std Dev: 0.0167 +/- 0.0005



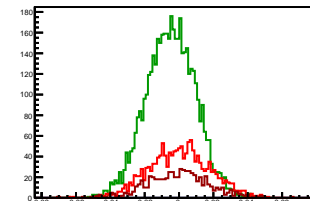
Cycle 10, Asyms

Entries: 660	Entries: 4647	Entries: 1448
Mean: 0.0005 +/- 0.0007	Mean: -0.0048 +/- 0.0002	Mean: 0.0002 +/- 0.0004
Std Dev: 0.0167 +/- 0.0005	Std Dev: 0.0142 +/- 0.0001	Std Dev: 0.0168 +/- 0.0003



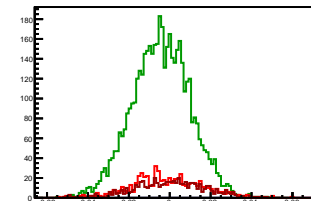
Cycle 11, Asyms

Entries: 1529	Entries: 4651	Entries: 647
Mean: 0.0003 +/- 0.0004	Mean: -0.0048 +/- 0.0002	Mean: -0.0005 +/- 0.0007
Std Dev: 0.0175 +/- 0.0003	Std Dev: 0.0144 +/- 0.0001	Std Dev: 0.0179 +/- 0.0005



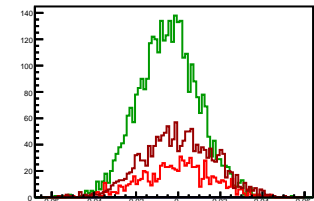
Cycle 12, Asyms

Entries: 631	Entries: 4718	Entries: 594
Mean: -0.0014 +/- 0.0007	Mean: -0.0042 +/- 0.0002	Mean: 0.0001 +/- 0.0007
Std Dev: 0.0173 +/- 0.0005	Std Dev: 0.0141 +/- 0.0001	Std Dev: 0.0171 +/- 0.0005



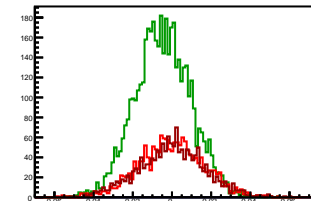
Cycle 13, Asyms

Entries: 875	Entries: 3500	Entries: 1624
Mean: -0.0004 +/- 0.0006	Mean: -0.0047 +/- 0.0002	Mean: 0.0002 +/- 0.0004
Std Dev: 0.0169 +/- 0.0004	Std Dev: 0.0143 +/- 0.0002	Std Dev: 0.0168 +/- 0.0003



Cycle 14, Asyms

Entries: 1664	Entries: 4630	Entries: 1535
Mean: -0.0003 +/- 0.0004	Mean: -0.0047 +/- 0.0002	Mean: -0.0002 +/- 0.0004
Std Dev: 0.0168 +/- 0.0003	Std Dev: 0.0143 +/- 0.0001	Std Dev: 0.0170 +/- 0.0003



Cycle 15, Asyms

Entries: 600	Entries: 4668	Entries: 591
Mean: 0.0002 +/- 0.0007	Mean: -0.0046 +/- 0.0002	Mean: 0.0021 +/- 0.0007
Std Dev: 0.0172 +/- 0.0005	Std Dev: 0.0140 +/- 0.0001	Std Dev: 0.0173 +/- 0.0005

