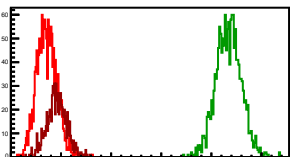
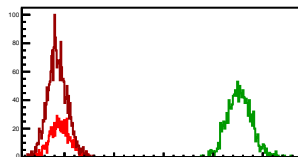


Cycle 1, PosHel

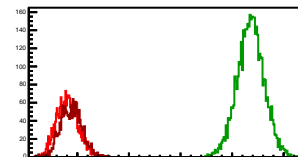
Entries: 1539	Entries: 1541	Entries: 795
Mean: 7.7164 \pm 0.0050	Mean: 11.3442 \pm 0.0064	Mean: 7.9164 \pm 0.0070
Std Dev: 0.1976 \pm 0.0036	Std Dev: 0.2514 \pm 0.0045	Std Dev: 0.1977 \pm 0.0050

**Cycle 2, PosHel**

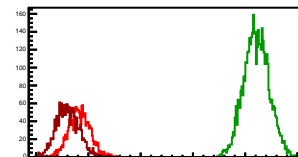
Entries: 856	Entries: 1308	Entries: 2275
Mean: 7.9104 \pm 0.0068	Mean: 11.5305 \pm 0.0068	Mean: 7.8564 \pm 0.0041
Std Dev: 0.1975 \pm 0.0048	Std Dev: 0.2453 \pm 0.0048	Std Dev: 0.1978 \pm 0.0029

**Cycle 3, PosHel**

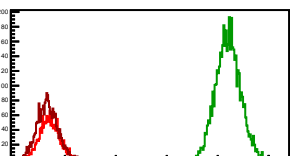
Entries: 2217	Entries: 4573	Entries: 1694
Mean: 7.8126 \pm 0.0044	Mean: 11.3594 \pm 0.0039	Mean: 7.8819 \pm 0.0051
Std Dev: 0.2085 \pm 0.0031	Std Dev: 0.2605 \pm 0.0027	Std Dev: 0.2079 \pm 0.0036

**Cycle 4, PosHel**

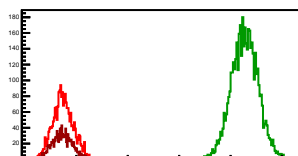
Entries: 1675	Entries: 4640	Entries: 1661
Mean: 7.8308 \pm 0.0049	Mean: 11.2135 \pm 0.0035	Mean: 7.6037 \pm 0.0053
Std Dev: 0.2018 \pm 0.0035	Std Dev: 0.2417 \pm 0.0025	Std Dev: 0.2163 \pm 0.0038

**Cycle 5, PosHel**

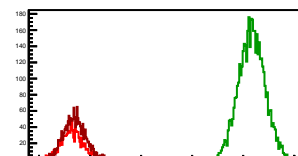
Entries: 1632	Entries: 4656	Entries: 2231
Mean: 7.5961 \pm 0.0047	Mean: 11.2041 \pm 0.0035	Mean: 7.6575 \pm 0.0043
Std Dev: 0.1902 \pm 0.0033	Std Dev: 0.2384 \pm 0.0025	Std Dev: 0.2010 \pm 0.0030

**Cycle 6, PosHel**

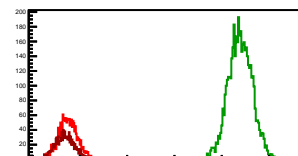
Entries: 2194	Entries: 4665	Entries: 1066
Mean: 7.7394 \pm 0.0043	Mean: 11.2758 \pm 0.0038	Mean: 7.7276 \pm 0.0063
Std Dev: 0.2004 \pm 0.0030	Std Dev: 0.2629 \pm 0.0027	Std Dev: 0.2045 \pm 0.0044

**Cycle 7, PosHel**

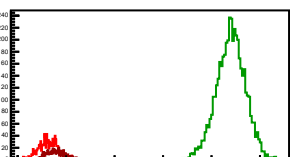
Entries: 1057	Entries: 4562	Entries: 1711
Mean: 7.5453 \pm 0.0065	Mean: 11.1703 \pm 0.0038	Mean: 7.6944 \pm 0.0051
Std Dev: 0.2107 \pm 0.0046	Std Dev: 0.2566 \pm 0.0027	Std Dev: 0.2091 \pm 0.0036

**Cycle 8, PosHel**

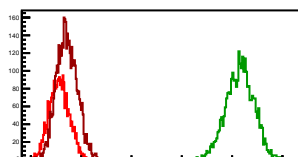
Entries: 1673	Entries: 4602	Entries: 1078
Mean: 7.7461 \pm 0.0048	Mean: 11.3904 \pm 0.0037	Mean: 7.6784 \pm 0.0062
Std Dev: 0.1981 \pm 0.0034	Std Dev: 0.2520 \pm 0.0026	Std Dev: 0.2034 \pm 0.0044

**Cycle 9, PosHel**

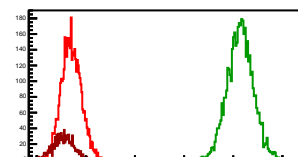
Entries: 1066	Entries: 4659	Entries: 585
Mean: 7.6395 \pm 0.0065	Mean: 11.3972 \pm 0.0044	Mean: 7.7872 \pm 0.0080
Std Dev: 0.2117 \pm 0.0046	Std Dev: 0.3023 \pm 0.0031	Std Dev: 0.1933 \pm 0.0057

**Cycle 10, PosHel**

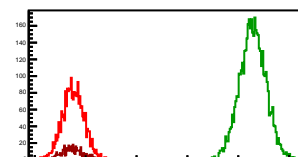
Entries: 2530	Entries: 2970	Entries: 4294
Mean: 7.5652 \pm 0.0040	Mean: 11.1576 \pm 0.0051	Mean: 7.7141 \pm 0.0032
Std Dev: 0.1994 \pm 0.0028	Std Dev: 0.2800 \pm 0.0036	Std Dev: 0.2067 \pm 0.0022

**Cycle 11, PosHel**

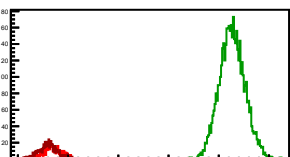
Entries: 4243	Entries: 4590	Entries: 1008
Mean: 7.7050 \pm 0.0031	Mean: 11.1455 \pm 0.0038	Mean: 7.5467 \pm 0.0065
Std Dev: 0.2023 \pm 0.0022	Std Dev: 0.2601 \pm 0.0027	Std Dev: 0.2060 \pm 0.0046

**Cycle 12, PosHel**

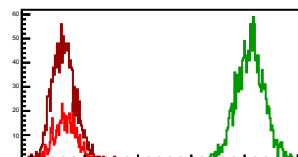
Entries: 2429	Entries: 4651	Entries: 480
Mean: 7.7560 \pm 0.0044	Mean: 11.2862 \pm 0.0038	Mean: 7.7387 \pm 0.0093
Std Dev: 0.2179 \pm 0.0031	Std Dev: 0.2589 \pm 0.0027	Std Dev: 0.2030 \pm 0.0066

**Cycle 13, PosHel**

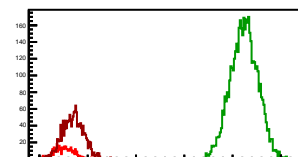
Entries: 467	Entries: 4652	Entries: 572
Mean: 7.2950 \pm 0.0069	Mean: 10.5710 \pm 0.0075	Mean: 7.6033 \pm 0.0084
Std Dev: 0.1966 \pm 0.0064	Std Dev: 0.2533 \pm 0.0026	Std Dev: 0.1998 \pm 0.0059

**Cycle 14, PosHel**

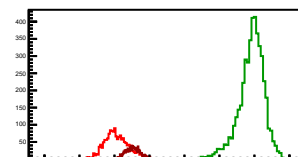
Entries: 572	Entries: 1647	Entries: 1374
Mean: 7.6333 \pm 0.0086	Mean: 11.1058 \pm 0.0063	Mean: 7.6073 \pm 0.0057
Std Dev: 0.2055 \pm 0.0061	Std Dev: 0.2563 \pm 0.0045	Std Dev: 0.2111 \pm 0.0040

**Cycle 15, PosHel**

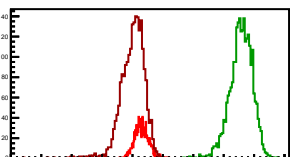
Entries: 470	Entries: 4690	Entries: 1667
Mean: 7.5148 \pm 0.0095	Mean: 11.2386 \pm 0.0041	Mean: 7.6995 \pm 0.0054
Std Dev: 0.2063 \pm 0.0067	Std Dev: 0.2821 \pm 0.0029	Std Dev: 0.2206 \pm 0.0038

**Cycle 16, PosHel**

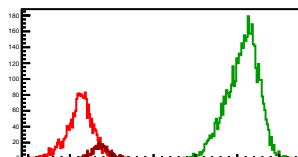
Entries: 1644	Entries: 4581	Entries: 1064
Mean: 7.0380 \pm 0.0093	Mean: 10.9069 \pm 0.0058	Mean: 7.5260 \pm 0.0067
Std Dev: 0.3759 \pm 0.0066	Std Dev: 0.3908 \pm 0.0041	Std Dev: 0.2170 \pm 0.0047

**Cycle 17, PosHel**

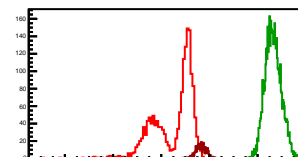
Entries: 1050	Entries: 2523	Entries: 2137
Mean: 7.2950 \pm 0.0069	Mean: 10.5710 \pm 0.0075	Mean: 7.6033 \pm 0.0087
Std Dev: 0.2248 \pm 0.0049	Std Dev: 0.3776 \pm 0.0053	Std Dev: 0.4023 \pm 0.0062

**Cycle 18, PosHel**

Entries: 2093	Entries: 4648	Entries: 548
Mean: 7.2368 \pm 0.0067	Mean: 11.1234 \pm 0.0056	Mean: 7.7491 \pm 0.0086
Std Dev: 0.3070 \pm 0.0047	Std Dev: 0.3798 \pm 0.0039	Std Dev: 0.2025 \pm 0.0061

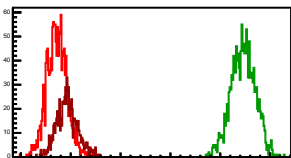
**Cycle 19, PosHel**

Entries: 1643	Entries: 4673	Entries: 500
Mean: 6.5027 \pm 0.0208	Mean: 10.6450 \pm 0.0049	Mean: 7.6512 \pm 0.0092
Std Dev: 0.8414 \pm 0.0147	Std Dev: 0.3327 \pm 0.0034	Std Dev: 0.2053 \pm 0.0065

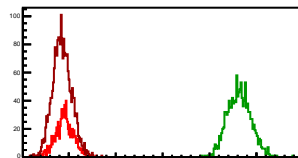


Cycle 1, NegHel

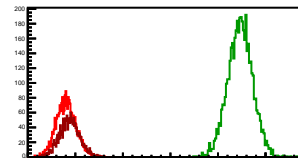
Entries: 1539	Entries: 1541	Entries: 795
Mean: 7.7194 \pm 0.0051	Mean: 11.4581 \pm 0.0062	Mean: 7.9277 \pm 0.0074
Std Dev: 0.2002 \pm 0.0036	Std Dev: 0.2435 \pm 0.0044	Std Dev: 0.2086 \pm 0.0052

**Cycle 2, NegHel**

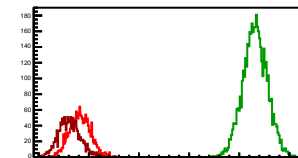
Entries: 856	Entries: 1308	Entries: 2275
Mean: 7.9066 \pm 0.0066	Mean: 11.6342 \pm 0.0070	Mean: 7.8564 \pm 0.0042
Std Dev: 0.1924 \pm 0.0046	Std Dev: 0.2526 \pm 0.0049	Std Dev: 0.2020 \pm 0.0030

**Cycle 3, NegHel**

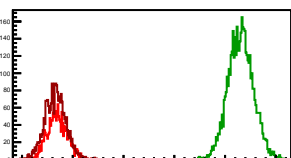
Entries: 2217	Entries: 4573	Entries: 1694
Mean: 7.8042 \pm 0.0044	Mean: 11.4662 \pm 0.0039	Mean: 7.8765 \pm 0.0052
Std Dev: 0.2080 \pm 0.0031	Std Dev: 0.2604 \pm 0.0027	Std Dev: 0.2129 \pm 0.0037

**Cycle 4, NegHel**

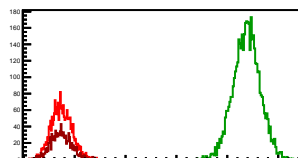
Entries: 1675	Entries: 4640	Entries: 1661
Mean: 7.8241 \pm 0.0051	Mean: 11.3175 \pm 0.0036	Mean: 7.6116 \pm 0.0052
Std Dev: 0.2091 \pm 0.0036	Std Dev: 0.2458 \pm 0.0026	Std Dev: 0.2133 \pm 0.0037

**Cycle 5, NegHel**

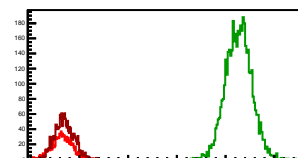
Entries: 1632	Entries: 4656	Entries: 2231
Mean: 7.5927 \pm 0.0048	Mean: 11.3082 \pm 0.0036	Mean: 7.6566 \pm 0.0044
Std Dev: 0.1939 \pm 0.0034	Std Dev: 0.2458 \pm 0.0025	Std Dev: 0.2060 \pm 0.0031

**Cycle 6, NegHel**

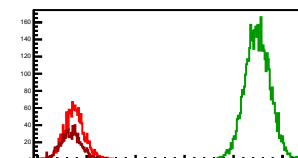
Entries: 2194	Entries: 4665	Entries: 1066
Mean: 7.7397 \pm 0.0043	Mean: 11.3814 \pm 0.0038	Mean: 7.7304 \pm 0.0062
Std Dev: 0.1988 \pm 0.0030	Std Dev: 0.2608 \pm 0.0027	Std Dev: 0.2015 \pm 0.0044

**Cycle 7, NegHel**

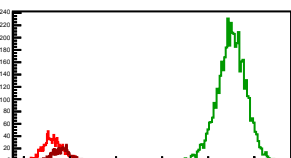
Entries: 1057	Entries: 4562	Entries: 1711
Mean: 7.5496 \pm 0.0065	Mean: 11.2672 \pm 0.0039	Mean: 7.6869 \pm 0.0047
Std Dev: 0.2118 \pm 0.0046	Std Dev: 0.2634 \pm 0.0028	Std Dev: 0.1954 \pm 0.0033

**Cycle 8, NegHel**

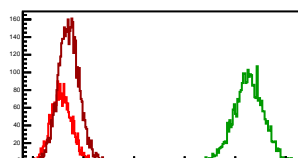
Entries: 1673	Entries: 4602	Entries: 1078
Mean: 7.7505 \pm 0.0051	Mean: 11.4890 \pm 0.0037	Mean: 7.6826 \pm 0.0062
Std Dev: 0.2084 \pm 0.0036	Std Dev: 0.2539 \pm 0.0026	Std Dev: 0.2049 \pm 0.0044

**Cycle 9, NegHel**

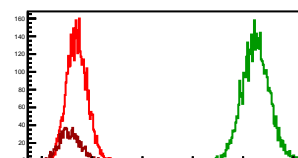
Entries: 1066	Entries: 4659	Entries: 595
Mean: 7.6274 \pm 0.0065	Mean: 11.5087 \pm 0.0045	Mean: 7.8094 \pm 0.0080
Std Dev: 0.2111 \pm 0.0046	Std Dev: 0.3062 \pm 0.0032	Std Dev: 0.1943 \pm 0.0057

**Cycle 10, NegHel**

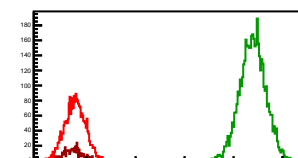
Entries: 2530	Entries: 2970	Entries: 4294
Mean: 7.5632 \pm 0.0039	Mean: 11.2665 \pm 0.0052	Mean: 7.7072 \pm 0.0031
Std Dev: 0.1982 \pm 0.0028	Std Dev: 0.2822 \pm 0.0037	Std Dev: 0.2045 \pm 0.0022

**Cycle 11, NegHel**

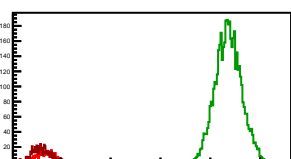
Entries: 4243	Entries: 4590	Entries: 1008
Mean: 7.6989 \pm 0.0031	Mean: 11.2546 \pm 0.0039	Mean: 7.5547 \pm 0.0067
Std Dev: 0.2002 \pm 0.0022	Std Dev: 0.2658 \pm 0.0028	Std Dev: 0.2114 \pm 0.0047

**Cycle 12, NegHel**

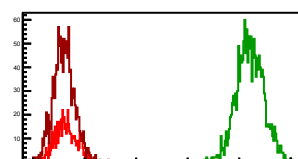
Entries: 2429	Entries: 4651	Entries: 480
Mean: 7.7631 \pm 0.0043	Mean: 11.3934 \pm 0.0038	Mean: 7.7311 \pm 0.0091
Std Dev: 0.2120 \pm 0.0030	Std Dev: 0.2615 \pm 0.0027	Std Dev: 0.1991 \pm 0.0064

**Cycle 13, NegHel**

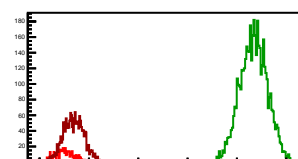
Entries: 467	Entries: 4652	Entries: 572
Mean: 7.6888 \pm 0.0092	Mean: 11.3636 \pm 0.0038	Mean: 7.6117 \pm 0.0079
Std Dev: 0.1982 \pm 0.0065	Std Dev: 0.2587 \pm 0.0027	Std Dev: 0.1884 \pm 0.0056

**Cycle 14, NegHel**

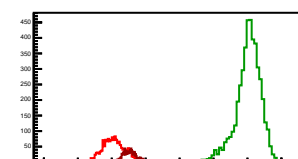
Entries: 572	Entries: 1647	Entries: 1374
Mean: 7.6299 \pm 0.0087	Mean: 11.2105 \pm 0.0064	Mean: 7.5969 \pm 0.0055
Std Dev: 0.2076 \pm 0.0061	Std Dev: 0.2613 \pm 0.0046	Std Dev: 0.2049 \pm 0.0039

**Cycle 15, NegHel**

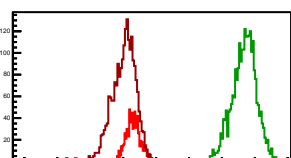
Entries: 470	Entries: 4690	Entries: 1667
Mean: 7.4978 \pm 0.0098	Mean: 11.3400 \pm 0.0041	Mean: 7.6915 \pm 0.0052
Std Dev: 0.2122 \pm 0.0069	Std Dev: 0.2774 \pm 0.0029	Std Dev: 0.2135 \pm 0.0037

**Cycle 16, NegHel**

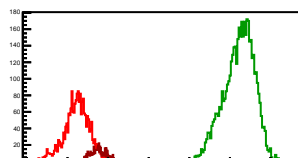
Entries: 1644	Entries: 4581	Entries: 1064
Mean: 7.0395 \pm 0.0092	Mean: 11.0171 \pm 0.0059	Mean: 7.5317 \pm 0.0065
Std Dev: 0.3733 \pm 0.0065	Std Dev: 0.3977 \pm 0.0042	Std Dev: 0.2129 \pm 0.0046

**Cycle 17, NegHel**

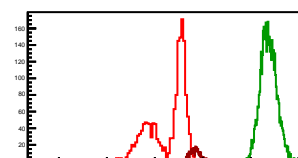
Entries: 1050	Entries: 2523	Entries: 2137
Mean: 7.3025 \pm 0.0070	Mean: 10.6707 \pm 0.0077	Mean: 7.6014 \pm 0.0087
Std Dev: 0.2282 \pm 0.0050	Std Dev: 0.3862 \pm 0.0054	Std Dev: 0.4004 \pm 0.0061

**Cycle 18, NegHel**

Entries: 2093	Entries: 4648	Entries: 548
Mean: 7.2257 \pm 0.0068	Mean: 11.2250 \pm 0.0055	Mean: 7.7657 \pm 0.0089
Std Dev: 0.3115 \pm 0.0048	Std Dev: 0.3763 \pm 0.0039	Std Dev: 0.2080 \pm 0.0063

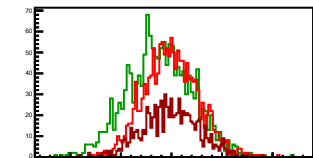
**Cycle 19, NegHel**

Entries: 1643	Entries: 4673	Entries: 500
Mean: 6.5099 \pm 0.0206	Mean: 10.7415 \pm 0.0050	Mean: 7.6642 \pm 0.0093
Std Dev: 0.8368 \pm 0.0146	Std Dev: 0.3386 \pm 0.0035	Std Dev: 0.2075 \pm 0.0066



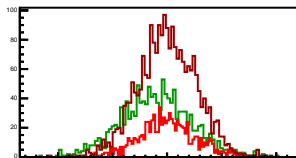
Cycle 1, Diffs

Entries: 1539	Entries: 1541	Entries: 795
Mean: -0.0030 +/- 0.0068	Mean: -0.1139 +/- 0.0082	Mean: -0.0113 +/- 0.0096
Std Dev: 0.2673 +/- 0.0048	Std Dev: 0.3234 +/- 0.0058	Std Dev: 0.2708 +/- 0.0069



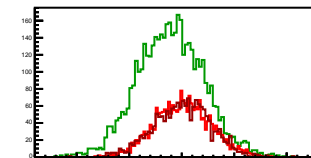
Cycle 2, Diffs

Entries: 856	Entries: 1308	Entries: 2275
Mean: 0.0038 +/- 0.0089	Mean: -0.1037 +/- 0.0089	Mean: 0.0000 +/- 0.0056
Std Dev: 0.2590 +/- 0.0063	Std Dev: 0.3211 +/- 0.0063	Std Dev: 0.2665 +/- 0.0040



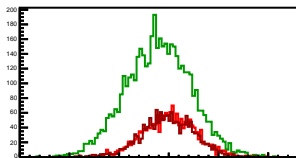
Cycle 3, Diffs

Entries: 2217	Entries: 4573	Entries: 1694
Mean: 0.0084 +/- 0.0056	Mean: -0.1068 +/- 0.0047	Mean: 0.0054 +/- 0.0065
Std Dev: 0.2658 +/- 0.0040	Std Dev: 0.3160 +/- 0.0033	Std Dev: 0.2689 +/- 0.0046



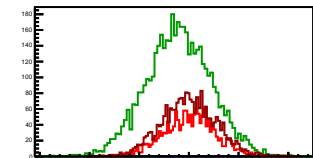
Cycle 4, Diffs

Entries: 1675	Entries: 4640	Entries: 1661
Mean: 0.0066 +/- 0.0064	Mean: -0.1040 +/- 0.0048	Mean: -0.0079 +/- 0.0065
Std Dev: 0.2608 +/- 0.0045	Std Dev: 0.3270 +/- 0.0034	Std Dev: 0.2643 +/- 0.0046



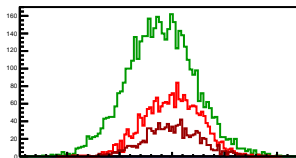
Cycle 5, Diffs

Entries: 1632	Entries: 4656	Entries: 2231
Mean: 0.0035 +/- 0.0065	Mean: -0.1041 +/- 0.0048	Mean: 0.0009 +/- 0.0057
Std Dev: 0.2699 +/- 0.0046	Std Dev: 0.3258 +/- 0.0034	Std Dev: 0.2706 +/- 0.0041



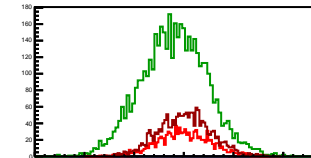
Cycle 6, Diffs

Entries: 2194	Entries: 4665	Entries: 1066
Mean: -0.0003 +/- 0.0056	Mean: -0.1056 +/- 0.0047	Mean: -0.0028 +/- 0.0081
Std Dev: 0.2635 +/- 0.0040	Std Dev: 0.3234 +/- 0.0033	Std Dev: 0.2630 +/- 0.0057



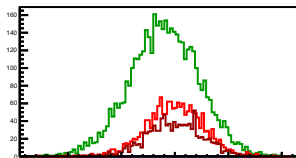
Cycle 7, Diffs

Entries: 1057	Entries: 4562	Entries: 1711
Mean: -0.0043 +/- 0.0081	Mean: -0.0969 +/- 0.0049	Mean: 0.0076 +/- 0.0064
Std Dev: 0.2640 +/- 0.0057	Std Dev: 0.3300 +/- 0.0035	Std Dev: 0.2633 +/- 0.0045



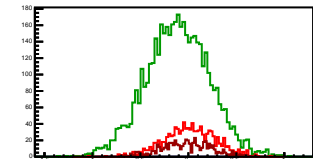
Cycle 8, Diffs

Entries: 1673	Entries: 4602	Entries: 1078
Mean: -0.0044 +/- 0.0064	Mean: -0.0985 +/- 0.0047	Mean: -0.0042 +/- 0.0079
Std Dev: 0.2620 +/- 0.0045	Std Dev: 0.3222 +/- 0.0034	Std Dev: 0.2592 +/- 0.0056



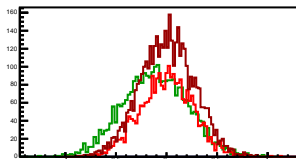
Cycle 9, Diffs

Entries: 1066	Entries: 4659	Entries: 595
Mean: 0.0121 +/- 0.0081	Mean: -0.1115 +/- 0.0049	Mean: -0.0222 +/- 0.0108
Std Dev: 0.2658 +/- 0.0058	Std Dev: 0.3312 +/- 0.0034	Std Dev: 0.2618 +/- 0.0077



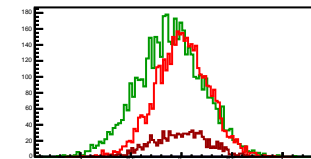
Cycle 10, Diffs

Entries: 2530	Entries: 2970	Entries: 4294
Mean: 0.0021 +/- 0.0052	Mean: -0.1089 +/- 0.0059	Mean: 0.0069 +/- 0.0041
Std Dev: 0.2601 +/- 0.0037	Std Dev: 0.3226 +/- 0.0042	Std Dev: 0.2672 +/- 0.0029



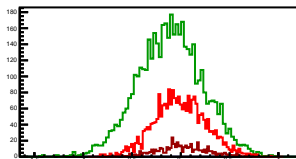
Cycle 11, Diffs

Entries: 4243	Entries: 4590	Entries: 1008
Mean: 0.0060 +/- 0.0040	Mean: -0.1090 +/- 0.0048	Mean: -0.0080 +/- 0.0085
Std Dev: 0.2601 +/- 0.0028	Std Dev: 0.3240 +/- 0.0034	Std Dev: 0.2699 +/- 0.0060



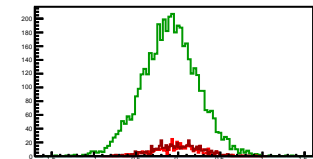
Cycle 12, Diffs

Entries: 2429	Entries: 4651	Entries: 480
Mean: -0.0072 +/- 0.0054	Mean: -0.1071 +/- 0.0049	Mean: 0.0076 +/- 0.0119
Std Dev: 0.2680 +/- 0.0038	Std Dev: 0.3341 +/- 0.0035	Std Dev: 0.2614 +/- 0.0084



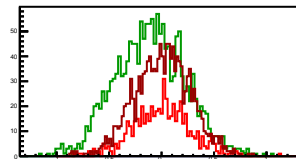
Cycle 13, Diffs

Entries: 467	Entries: 4652	Entries: 572
Mean: -0.0076 +/- 0.0120	Mean: -0.0985 +/- 0.0048	Mean: -0.0092 +/- 0.0113
Std Dev: 0.2600 +/- 0.0085	Std Dev: 0.3290 +/- 0.0034	Std Dev: 0.2701 +/- 0.0080



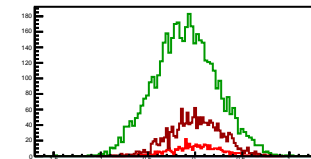
Cycle 14, Diffs

Entries: 572	Entries: 1647	Entries: 1374
Mean: 0.0034 +/- 0.0116	Mean: -0.1047 +/- 0.0082	Mean: 0.0104 +/- 0.0071
Std Dev: 0.2768 +/- 0.0082	Std Dev: 0.3343 +/- 0.0058	Std Dev: 0.2648 +/- 0.0051



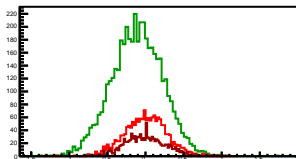
Cycle 15, Diffs

Entries: 470	Entries: 4690	Entries: 1667
Mean: 0.0170 +/- 0.0123	Mean: -0.1014 +/- 0.0048	Mean: 0.0080 +/- 0.0067
Std Dev: 0.2663 +/- 0.0087	Std Dev: 0.3306 +/- 0.0034	Std Dev: 0.2722 +/- 0.0047



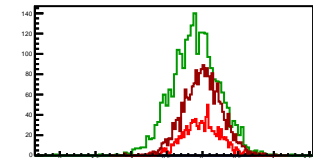
Cycle 16, Diffs

Entries: 1644	Entries: 4581	Entries: 1064
Mean: -0.0015 +/- 0.0068	Mean: -0.1102 +/- 0.0049	Mean: -0.0057 +/- 0.0080
Std Dev: 0.2741 +/- 0.0048	Std Dev: 0.3336 +/- 0.0035	Std Dev: 0.2604 +/- 0.0056



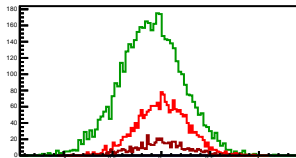
Cycle 17, Diffs

Entries: 1050	Entries: 2523	Entries: 2137
Mean: -0.0076 +/- 0.0082	Mean: -0.0997 +/- 0.0066	Mean: 0.0019 +/- 0.0058
Std Dev: 0.2673 +/- 0.0058	Std Dev: 0.3315 +/- 0.0047	Std Dev: 0.2654 +/- 0.0041



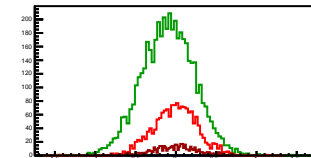
Cycle 18, Diffs

Entries: 2093	Entries: 4648	Entries: 548
Mean: 0.0111 +/- 0.0057	Mean: -0.1016 +/- 0.0048	Mean: -0.0166 +/- 0.0117
Std Dev: 0.2610 +/- 0.0040	Std Dev: 0.3241 +/- 0.0034	Std Dev: 0.2750 +/- 0.0083



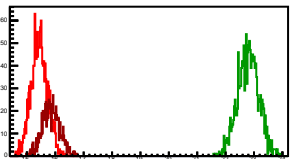
Cycle 19, Diffs

Entries: 1643	Entries: 4673	Entries: 500
Mean: -0.0172 +/- 0.0067	Mean: -0.0965 +/- 0.0048	Mean: -0.0130 +/- 0.0120
Std Dev: 0.2725 +/- 0.0046	Std Dev: 0.3264 +/- 0.0034	Std Dev: 0.2689 +/- 0.0085

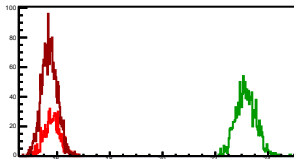


Cycle 1, Sums

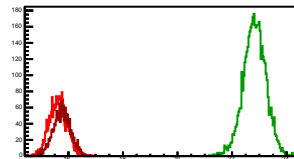
Entries: 1539	Entries: 1541	Entries: 795
Mean: 15.4358 +/- 0.0075	Mean: 22.8022 +/- 0.0095	Mean: 15.8441 +/- 0.0107
Std Dev: 0.2946 +/- 0.0053	Std Dev: 0.3746 +/- 0.0067	Std Dev: 0.3031 +/- 0.0076

**Cycle 2, Sums**

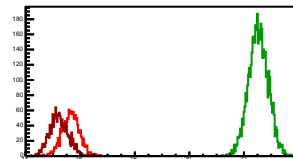
Entries: 856	Entries: 1308	Entries: 2275
Mean: 15.8170 +/- 0.0100	Mean: 23.1647 +/- 0.0105	Mean: 15.7128 +/- 0.0064
Std Dev: 0.2915 +/- 0.0070	Std Dev: 0.3807 +/- 0.0074	Std Dev: 0.2981 +/- 0.0044

**Cycle 3, Sums**

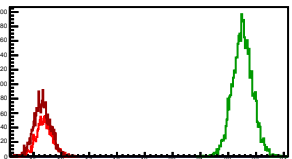
Entries: 2217	Entries: 4573	Entries: 1694
Mean: 15.6169 +/- 0.0068	Mean: 22.8257 +/- 0.0061	Mean: 15.7584 +/- 0.0079
Std Dev: 0.3207 +/- 0.0048	Std Dev: 0.4141 +/- 0.0043	Std Dev: 0.3238 +/- 0.0056

**Cycle 4, Sums**

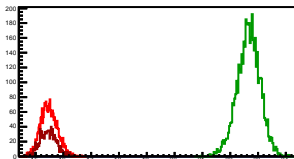
Entries: 1675	Entries: 4640	Entries: 1661
Mean: 15.6549 +/- 0.0078	Mean: 22.5310 +/- 0.0053	Mean: 15.2154 +/- 0.0083
Std Dev: 0.3177 +/- 0.0055	Std Dev: 0.3616 +/- 0.0038	Std Dev: 0.3387 +/- 0.0059

**Cycle 5, Sums**

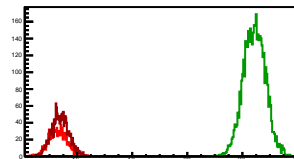
Entries: 1632	Entries: 4656	Entries: 2231
Mean: 15.3888 +/- 0.0070	Mean: 22.5122 +/- 0.0053	Mean: 15.3141 +/- 0.0064
Std Dev: 0.2819 +/- 0.0049	Std Dev: 0.3583 +/- 0.0037	Std Dev: 0.3041 +/- 0.0046

**Cycle 6, Sums**

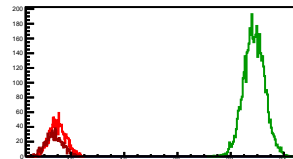
Entries: 2194	Entries: 4665	Entries: 1066
Mean: 15.4792 +/- 0.0064	Mean: 22.6572 +/- 0.0060	Mean: 15.4580 +/- 0.0095
Std Dev: 0.3013 +/- 0.0045	Std Dev: 0.4119 +/- 0.0043	Std Dev: 0.3092 +/- 0.0067

**Cycle 7, Sums**

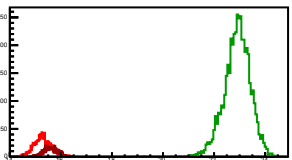
Entries: 1057	Entries: 4562	Entries: 1711
Mean: 15.2949 +/- 0.0101	Mean: 22.4376 +/- 0.0059	Mean: 15.3813 +/- 0.0074
Std Dev: 0.3299 +/- 0.0072	Std Dev: 0.4012 +/- 0.0042	Std Dev: 0.3073 +/- 0.0053

**Cycle 8, Sums**

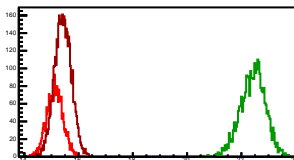
Entries: 1673	Entries: 4602	Entries: 1078
Mean: 15.4967 +/- 0.0076	Mean: 22.8794 +/- 0.0057	Mean: 15.3610 +/- 0.0096
Std Dev: 0.3110 +/- 0.0054	Std Dev: 0.3900 +/- 0.0041	Std Dev: 0.3155 +/- 0.0068

**Cycle 9, Sums**

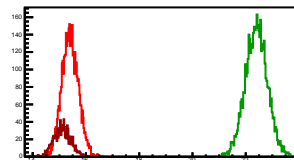
Entries: 1066	Entries: 4659	Entries: 595
Mean: 15.2669 +/- 0.0101	Mean: 22.9059 +/- 0.0075	Mean: 15.5966 +/- 0.0118
Std Dev: 0.3288 +/- 0.0071	Std Dev: 0.5104 +/- 0.0053	Std Dev: 0.2857 +/- 0.0084

**Cycle 10, Sums**

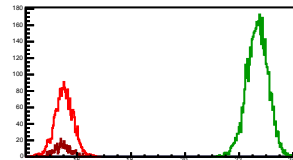
Entries: 2530	Entries: 2970	Entries: 4294
Mean: 15.1284 +/- 0.0060	Mean: 22.4241 +/- 0.0084	Mean: 15.4212 +/- 0.0048
Std Dev: 0.3007 +/- 0.0042	Std Dev: 0.4604 +/- 0.0060	Std Dev: 0.3126 +/- 0.0034

**Cycle 11, Sums**

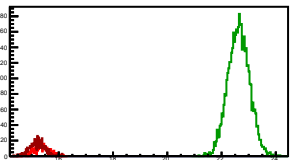
Entries: 4243	Entries: 4590	Entries: 1008
Mean: 15.4039 +/- 0.0047	Mean: 22.4001 +/- 0.0061	Mean: 15.1015 +/- 0.0100
Std Dev: 0.3071 +/- 0.0033	Std Dev: 0.4143 +/- 0.0043	Std Dev: 0.3185 +/- 0.0071

**Cycle 12, Sums**

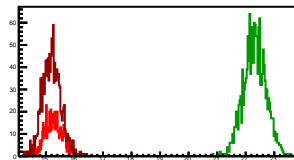
Entries: 2429	Entries: 4651	Entries: 480
Mean: 15.5191 +/- 0.0068	Mean: 22.6796 +/- 0.0059	Mean: 15.4697 +/- 0.0139
Std Dev: 0.3363 +/- 0.0048	Std Dev: 0.3990 +/- 0.0041	Std Dev: 0.3055 +/- 0.0099

**Cycle 13, Sums**

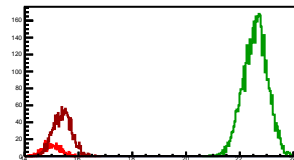
Entries: 467	Entries: 4652	Entries: 572
Mean: 15.3784 +/- 0.0113	Mean: 22.6307 +/- 0.0058	Mean: 15.2141 +/- 0.0117
Std Dev: 0.2971 +/- 0.0097	Std Dev: 0.3924 +/- 0.0041	Std Dev: 0.2790 +/- 0.0083

**Cycle 14, Sums**

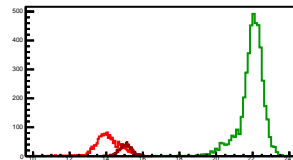
Entries: 572	Entries: 1647	Entries: 1374
Mean: 14.6261 +/- 0.0128	Mean: 22.3463 +/- 0.0097	Mean: 15.2042 +/- 0.0087
Std Dev: 0.3067 +/- 0.0091	Std Dev: 0.3952 +/- 0.0069	Std Dev: 0.3209 +/- 0.0061

**Cycle 15, Sums**

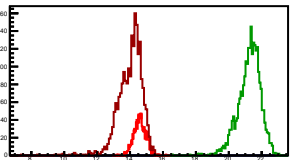
Entries: 470	Entries: 4690	Entries: 1667
Mean: 15.0125 +/- 0.0149	Mean: 22.5786 +/- 0.0066	Mean: 15.3910 +/- 0.0083
Std Dev: 0.3228 +/- 0.0105	Std Dev: 0.4514 +/- 0.0047	Std Dev: 0.3382 +/- 0.0059

**Cycle 16, Sums**

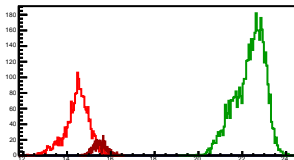
Entries: 1644	Entries: 4581	Entries: 1064
Mean: 14.0775 +/- 0.0172	Mean: 21.9240 +/- 0.0106	Mean: 15.0577 +/- 0.0105
Std Dev: 0.6972 +/- 0.0122	Std Dev: 0.7145 +/- 0.0075	Std Dev: 0.3420 +/- 0.0074

**Cycle 17, Sums**

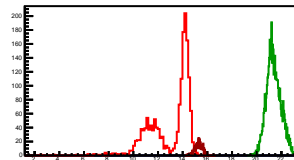
Entries: 1050	Entries: 2523	Entries: 2137
Mean: 14.5975 +/- 0.0113	Mean: 21.2417 +/- 0.0137	Mean: 14.0047 +/- 0.0164
Std Dev: 0.3658 +/- 0.0080	Std Dev: 0.6881 +/- 0.0097	Std Dev: 0.7572 +/- 0.0116

**Cycle 18, Sums**

Entries: 2093	Entries: 4648	Entries: 548
Mean: 14.4626 +/- 0.0123	Mean: 22.3484 +/- 0.0100	Mean: 15.5148 +/- 0.0130
Std Dev: 0.5608 +/- 0.0087	Std Dev: 0.6832 +/- 0.0071	Std Dev: 0.3047 +/- 0.0092

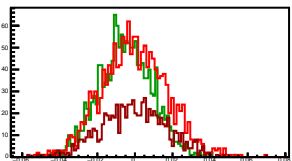
**Cycle 19, Sums**

Entries: 1643	Entries: 4673	Entries: 500
Mean: 13.0126 +/- 0.0409	Mean: 21.3865 +/- 0.0086	Mean: 15.3153 +/- 0.0140
Std Dev: 1.6560 +/- 0.0289	Std Dev: 0.5867 +/- 0.0061	Std Dev: 0.5131 +/- 0.0099



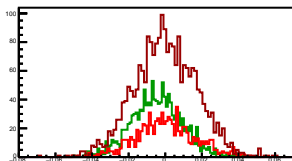
Cycle 1, Asyms

Entries: 1539	Entries: 1541	Entries: 795
Mean: -0.0002 +/- 0.0004	Mean: -0.0050 +/- 0.0004	Mean: -0.0007 +/- 0.0006
Std Dev: 0.0173 +/- 0.0003	Std Dev: 0.0142 +/- 0.0003	Std Dev: 0.0171 +/- 0.0004



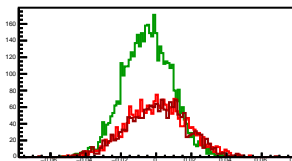
Cycle 2, Asyms

Entries: 856	Entries: 1308	Entries: 2275
Mean: 0.0002 +/- 0.0006	Mean: -0.0045 +/- 0.0004	Mean: 0.0000 +/- 0.0004
Std Dev: 0.0164 +/- 0.0004	Std Dev: 0.0138 +/- 0.0003	Std Dev: 0.0169 +/- 0.0003



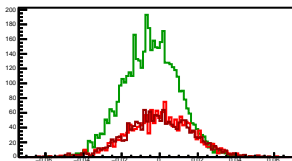
Cycle 3, Asyms

Entries: 2217	Entries: 4573	Entries: 1694
Mean: 0.0005 +/- 0.0004	Mean: -0.0047 +/- 0.0002	Mean: 0.0004 +/- 0.0004
Std Dev: 0.0170 +/- 0.0003	Std Dev: 0.0138 +/- 0.0001	Std Dev: 0.0170 +/- 0.0003



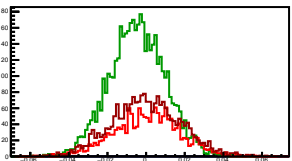
Cycle 4, Asyms

Entries: 1675	Entries: 4640	Entries: 1661
Mean: 0.0004 +/- 0.0004	Mean: -0.0046 +/- 0.0002	Mean: -0.0005 +/- 0.0003
Std Dev: 0.0166 +/- 0.0003	Std Dev: 0.0145 +/- 0.0002	Std Dev: 0.0173 +/- 0.0003



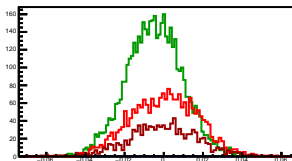
Cycle 5, Asyms

Entries: 1632	Entries: 4656	Entries: 2231
Mean: 0.0002 +/- 0.0004	Mean: -0.0046 +/- 0.0002	Mean: 0.0001 +/- 0.0004
Std Dev: 0.0169 +/- 0.0003	Std Dev: 0.0145 +/- 0.0001	Std Dev: 0.0176 +/- 0.0003



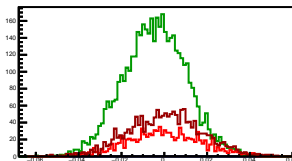
Cycle 6, Asyms

Entries: 2194	Entries: 4665	Entries: 1066
Mean: -0.0000 +/- 0.0004	Mean: -0.0047 +/- 0.0002	Mean: -0.0002 +/- 0.0005
Std Dev: 0.0170 +/- 0.0003	Std Dev: 0.0143 +/- 0.0001	Std Dev: 0.0170 +/- 0.0004



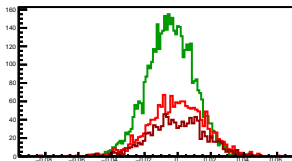
Cycle 7, Asyms

Entries: 1057	Entries: 4562	Entries: 1711
Mean: -0.0003 +/- 0.0005	Mean: -0.0043 +/- 0.0002	Mean: 0.0005 +/- 0.0004
Std Dev: 0.0173 +/- 0.0004	Std Dev: 0.0147 +/- 0.0002	Std Dev: 0.0171 +/- 0.0003



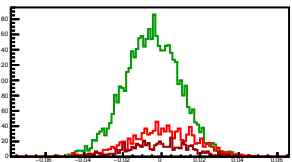
Cycle 8, Asyms

Entries: 1673	Entries: 4602	Entries: 1078
Mean: -0.0003 +/- 0.0004	Mean: -0.0043 +/- 0.0002	Mean: -0.0003 +/- 0.0005
Std Dev: 0.0173 +/- 0.0003	Std Dev: 0.0141 +/- 0.0001	Std Dev: 0.0169 +/- 0.0004



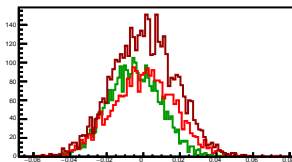
Cycle 9, Asyms

Entries: 1066	Entries: 4659	Entries: 595
Mean: 0.0008 +/- 0.0005	Mean: -0.0049 +/- 0.0002	Mean: -0.0014 +/- 0.0007
Std Dev: 0.0174 +/- 0.0004	Std Dev: 0.0145 +/- 0.0001	Std Dev: 0.0168 +/- 0.0005



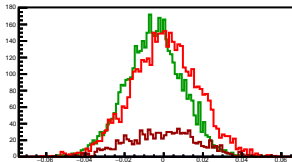
Cycle 10, Asyms

Entries: 2530	Entries: 2970	Entries: 4294
Mean: 0.0001 +/- 0.0003	Mean: -0.0049 +/- 0.0003	Mean: 0.0004 +/- 0.0003
Std Dev: 0.0172 +/- 0.0002	Std Dev: 0.0144 +/- 0.0002	Std Dev: 0.0173 +/- 0.0002



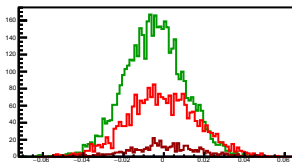
Cycle 11, Asyms

Entries: 4243	Entries: 4590	Entries: 1008
Mean: 0.0004 +/- 0.0003	Mean: -0.0049 +/- 0.0002	Mean: -0.0005 +/- 0.0006
Std Dev: 0.0169 +/- 0.0002	Std Dev: 0.0144 +/- 0.0002	Std Dev: 0.0178 +/- 0.0004



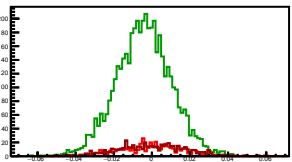
Cycle 12, Asyms

Entries: 2429	Entries: 4651	Entries: 480
Mean: -0.0005 +/- 0.0004	Mean: -0.0047 +/- 0.0002	Mean: 0.0005 +/- 0.0008
Std Dev: 0.0173 +/- 0.0002	Std Dev: 0.0147 +/- 0.0002	Std Dev: 0.0168 +/- 0.0005



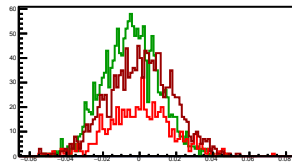
Cycle 13, Asyms

Entries: 467	Entries: 4652	Entries: 572
Mean: 0.0001 +/- 0.0008	Mean: -0.0047 +/- 0.0002	Mean: -0.0006 +/- 0.0007
Std Dev: 0.0169 +/- 0.0006	Std Dev: 0.0145 +/- 0.0002	Std Dev: 0.0177 +/- 0.0005



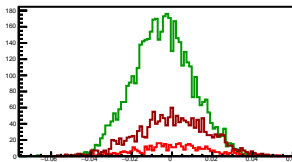
Cycle 14, Asyms

Entries: 572	Entries: 1647	Entries: 1374
Mean: 0.0002 +/- 0.0008	Mean: -0.0047 +/- 0.0004	Mean: 0.0001 +/- 0.0005
Std Dev: 0.0181 +/- 0.0005	Std Dev: 0.0150 +/- 0.0003	Std Dev: 0.0174 +/- 0.0003



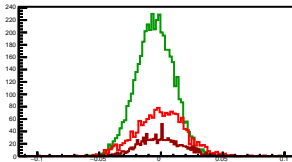
Cycle 15, Asyms

Entries: 470	Entries: 4690	Entries: 1667
Mean: 0.0011 +/- 0.0008	Mean: -0.0045 +/- 0.0002	Mean: 0.0005 +/- 0.0004
Std Dev: 0.0177 +/- 0.0006	Std Dev: 0.0146 +/- 0.0002	Std Dev: 0.0177 +/- 0.0003



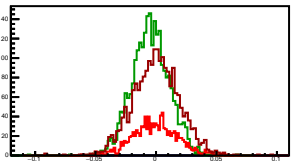
Cycle 16, Asyms

Entries: 1644	Entries: 4581	Entries: 1064
Mean: -0.0001 +/- 0.0005	Mean: -0.0050 +/- 0.0002	Mean: -0.0004 +/- 0.0005
Std Dev: 0.0196 +/- 0.0003	Std Dev: 0.0153 +/- 0.0002	Std Dev: 0.0172 +/- 0.0004



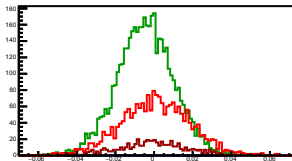
Cycle 17, Asyms

Entries: 1050	Entries: 2523	Entries: 2137
Mean: -0.0005 +/- 0.0006	Mean: -0.0047 +/- 0.0003	Mean: 0.0001 +/- 0.0004
Std Dev: 0.0163 +/- 0.0004	Std Dev: 0.0156 +/- 0.0002	Std Dev: 0.0193 +/- 0.0003



Cycle 18, Asyms

Entries: 2093	Entries: 4648	Entries: 548
Mean: 0.0008 +/- 0.0004	Mean: -0.0046 +/- 0.0002	Mean: -0.0011 +/- 0.0008
Std Dev: 0.0181 +/- 0.0003	Std Dev: 0.0145 +/- 0.0002	Std Dev: 0.0177 +/- 0.0005



Cycle 19, Asyms

Entries: 1643	Entries: 4673	Entries: 500
Mean: -0.0006 +/- 0.0005	Mean: -0.0045 +/- 0.0002	Mean: 0.0008 +/- 0.0008
Std Dev: 0.0217 +/- 0.0004	Std Dev: 0.0153 +/- 0.0002	Std Dev: 0.0175 +/- 0.0006

