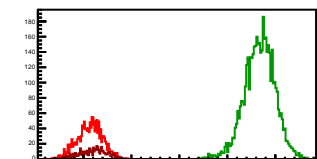
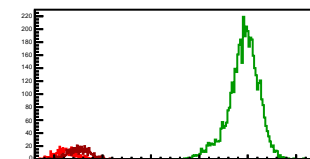


Cycle 1, PosHel

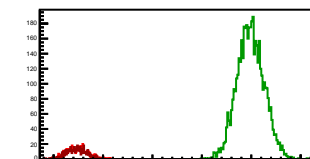
Entries: 1503	Entries: 4636	Entries: 501
Mean: 7.1351 \pm 0.0067	Mean: 10.6711 \pm 0.0046	Mean: 7.1928 \pm 0.0125
Std Dev: 0.2610 \pm 0.0048	Std Dev: 0.3153 \pm 0.0033	Std Dev: 0.2787 \pm 0.0088

**Cycle 2, PosHel**

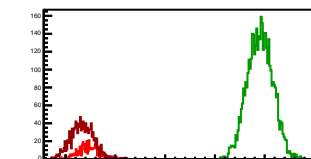
Entries: 480	Entries: 4637	Entries: 558
Mean: 7.2290 \pm 0.0092	Mean: 10.9155 \pm 0.0046	Mean: 7.5099 \pm 0.0091
Std Dev: 0.2022 \pm 0.0065	Std Dev: 0.3132 \pm 0.0033	Std Dev: 0.2146 \pm 0.0064

**Cycle 3, PosHel**

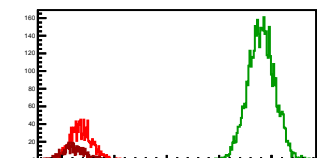
Entries: 525	Entries: 4694	Entries: 489
Mean: 7.4908 \pm 0.0090	Mean: 10.9854 \pm 0.0040	Mean: 7.4606 \pm 0.0090
Std Dev: 0.2061 \pm 0.0064	Std Dev: 0.2720 \pm 0.0028	Std Dev: 0.2001 \pm 0.0064

**Cycle 4, PosHel**

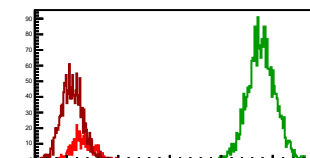
Entries: 482	Entries: 4254	Entries: 1225
Mean: 7.4722 \pm 0.0099	Mean: 10.9064 \pm 0.0039	Mean: 7.3290 \pm 0.0064
Std Dev: 0.2173 \pm 0.0070	Std Dev: 0.2548 \pm 0.0028	Std Dev: 0.2240 \pm 0.0045

**Cycle 5, PosHel**

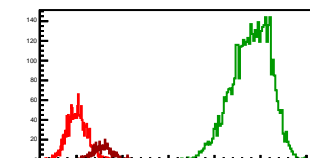
Entries: 1233	Entries: 4579	Entries: 494
Mean: 7.3599 \pm 0.0058	Mean: 10.8032 \pm 0.0037	Mean: 7.2284 \pm 0.0092
Std Dev: 0.2028 \pm 0.0041	Std Dev: 0.2507 \pm 0.0026	Std Dev: 0.2054 \pm 0.0065

**Cycle 6, PosHel**

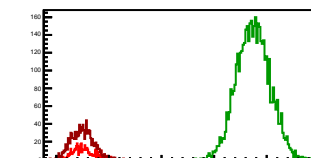
Entries: 488	Entries: 2494	Entries: 1579
Mean: 7.3119 \pm 0.0085	Mean: 10.7810 \pm 0.0052	Mean: 7.0986 \pm 0.0051
Std Dev: 0.1879 \pm 0.0060	Std Dev: 0.2588 \pm 0.0037	Std Dev: 0.2032 \pm 0.0036

**Cycle 7, PosHel**

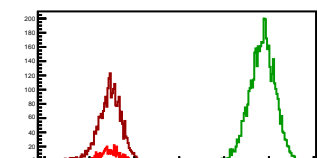
Entries: 1582	Entries: 4629	Entries: 485
Mean: 7.9114 \pm 0.0053	Mean: 10.7985 \pm 0.0061	Mean: 7.5676 \pm 0.0089
Std Dev: 0.2128 \pm 0.0038	Std Dev: 0.4166 \pm 0.0043	Std Dev: 0.1967 \pm 0.0063

**Cycle 8, PosHel**

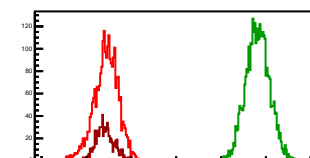
Entries: 472	Entries: 4644	Entries: 1091
Mean: 7.5099 \pm 0.0098	Mean: 10.7445 \pm 0.0046	Mean: 7.4957 \pm 0.0062
Std Dev: 0.2136 \pm 0.0070	Std Dev: 0.3114 \pm 0.0032	Std Dev: 0.2043 \pm 0.0044

**Cycle 9, PosHel**

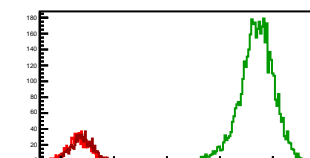
Entries: 525	Entries: 4620	Entries: 2458
Mean: 7.4481 \pm 0.0089	Mean: 10.8534 \pm 0.0041	Mean: 7.4447 \pm 0.0053
Std Dev: 0.2047 \pm 0.0063	Std Dev: 0.2787 \pm 0.0029	Std Dev: 0.2646 \pm 0.0038

**Cycle 10, PosHel**

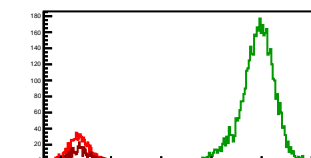
Entries: 2524	Entries: 3493	Entries: 955
Mean: 7.4359 \pm 0.0055	Mean: 10.8176 \pm 0.0045	Mean: 7.4177 \pm 0.0065
Std Dev: 0.2758 \pm 0.0039	Std Dev: 0.2638 \pm 0.0032	Std Dev: 0.2000 \pm 0.0046

**Cycle 11, PosHel**

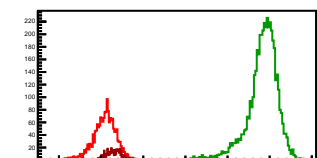
Entries: 955	Entries: 4611	Entries: 890
Mean: 7.3422 \pm 0.0067	Mean: 10.6976 \pm 0.0047	Mean: 7.3931 \pm 0.0067
Std Dev: 0.2076 \pm 0.0048	Std Dev: 0.3167 \pm 0.0033	Std Dev: 0.1993 \pm 0.0047

**Cycle 12, PosHel**

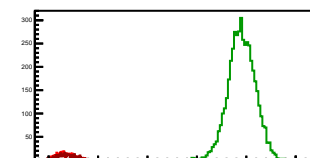
Entries: 697	Entries: 4650	Entries: 491
Mean: 7.3636 \pm 0.0068	Mean: 10.9240 \pm 0.0047	Mean: 7.3824 \pm 0.0068
Std Dev: 0.2033 \pm 0.0048	Std Dev: 0.3238 \pm 0.0034	Std Dev: 0.1910 \pm 0.0061

**Cycle 13, PosHel**

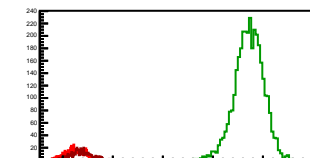
Entries: 1817	Entries: 4697	Entries: 532
Mean: 7.4829 \pm 0.0069	Mean: 10.8240 \pm 0.0054	Mean: 7.2968 \pm 0.0079
Std Dev: 0.2797 \pm 0.0046	Std Dev: 0.3714 \pm 0.0038	Std Dev: 0.1824 \pm 0.0056

**Cycle 14, PosHel**

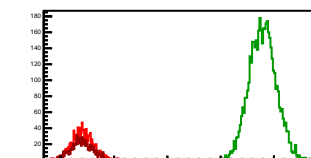
Entries: 515	Entries: 4629	Entries: 457
Mean: 7.3197 \pm 0.0083	Mean: 10.9048 \pm 0.0041	Mean: 7.6333 \pm 0.0089
Std Dev: 0.1885 \pm 0.0059	Std Dev: 0.2770 \pm 0.0029	Std Dev: 0.1899 \pm 0.0063

**Cycle 15, PosHel**

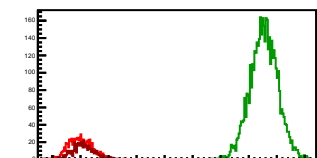
Entries: 555	Entries: 3386	Entries: 478
Mean: 7.2615 \pm 0.0091	Mean: 10.7213 \pm 0.0050	Mean: 7.3582 \pm 0.0095
Std Dev: 0.2155 \pm 0.0065	Std Dev: 0.2894 \pm 0.0035	Std Dev: 0.2078 \pm 0.0067

**Cycle 16, PosHel**

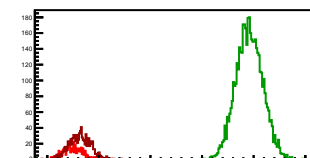
Entries: 1120	Entries: 4651	Entries: 860
Mean: 7.4121 \pm 0.0060	Mean: 10.7892 \pm 0.0037	Mean: 7.3913 \pm 0.0069
Std Dev: 0.1993 \pm 0.0042	Std Dev: 0.2525 \pm 0.0026	Std Dev: 0.2027 \pm 0.0049

**Cycle 17, PosHel**

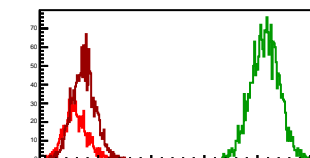
Entries: 868	Entries: 4607	Entries: 502
Mean: 7.4829 \pm 0.0069	Mean: 10.7703 \pm 0.0036	Mean: 7.5499 \pm 0.0094
Std Dev: 0.2027 \pm 0.0049	Std Dev: 0.2463 \pm 0.0026	Std Dev: 0.2098 \pm 0.0066

**Cycle 18, PosHel**

Entries: 497	Entries: 4630	Entries: 880
Mean: 7.4946 \pm 0.0090	Mean: 10.9157 \pm 0.0038	Mean: 7.6333 \pm 0.0070
Std Dev: 0.2015 \pm 0.0064	Std Dev: 0.2580 \pm 0.0027	Std Dev: 0.2091 \pm 0.0050

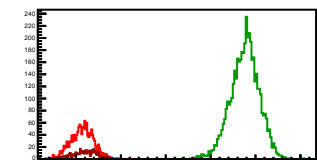
**Cycle 19, PosHel**

Entries: 895	Entries: 2289	Entries: 1644
Mean: 7.5776 \pm 0.0072	Mean: 11.1446 \pm 0.0055	Mean: 7.7277 \pm 0.0054
Std Dev: 0.2151 \pm 0.0051	Std Dev: 0.2627 \pm 0.0039	Std Dev: 0.2181 \pm 0.0038

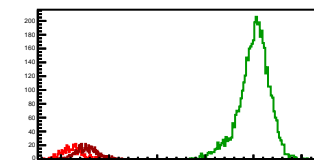


Cycle 1, NegHel

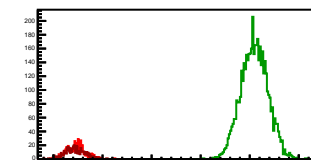
Entries: 1503	Entries: 4636	Entries: 501
Mean: 7.1304 \pm 0.0066	Mean: 10.7607 \pm 0.0047	Mean: 7.1984 \pm 0.0119
Std Dev: 0.2576 \pm 0.0047	Std Dev: 0.3192 \pm 0.0033	Std Dev: 0.2657 \pm 0.0084

**Cycle 2, NegHel**

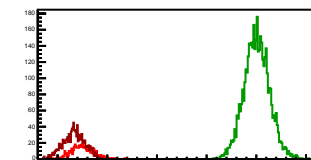
Entries: 480	Entries: 4637	Entries: 558
Mean: 7.2229 \pm 0.0093	Mean: 11.0129 \pm 0.0046	Mean: 7.5315 \pm 0.0091
Std Dev: 0.2045 \pm 0.0066	Std Dev: 0.3162 \pm 0.0033	Std Dev: 0.2157 \pm 0.0065

**Cycle 3, NegHel**

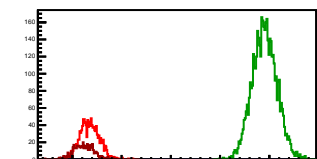
Entries: 525	Entries: 4694	Entries: 489
Mean: 7.4538 \pm 0.0066	Mean: 11.0953 \pm 0.0040	Mean: 7.4497 \pm 0.0093
Std Dev: 0.1964 \pm 0.0061	Std Dev: 0.2745 \pm 0.0028	Std Dev: 0.2060 \pm 0.0066

**Cycle 4, NegHel**

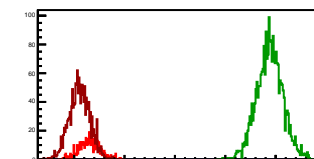
Entries: 482	Entries: 4254	Entries: 1225
Mean: 7.4889 \pm 0.0097	Mean: 11.0087 \pm 0.0039	Mean: 7.3331 \pm 0.0063
Std Dev: 0.2127 \pm 0.0069	Std Dev: 0.2553 \pm 0.0028	Std Dev: 0.2196 \pm 0.0044

**Cycle 5, NegHel**

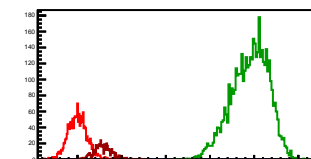
Entries: 1233	Entries: 4579	Entries: 494
Mean: 7.3502 \pm 0.0057	Mean: 10.9041 \pm 0.0037	Mean: 7.2327 \pm 0.0091
Std Dev: 0.2006 \pm 0.0040	Std Dev: 0.2512 \pm 0.0026	Std Dev: 0.2030 \pm 0.0065

**Cycle 6, NegHel**

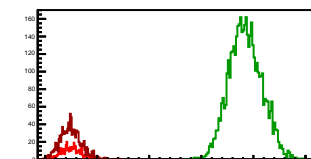
Entries: 488	Entries: 2494	Entries: 1579
Mean: 7.3021 \pm 0.0092	Mean: 10.8817 \pm 0.0052	Mean: 7.1074 \pm 0.0051
Std Dev: 0.2041 \pm 0.0065	Std Dev: 0.2597 \pm 0.0037	Std Dev: 0.2024 \pm 0.0036

**Cycle 7, NegHel**

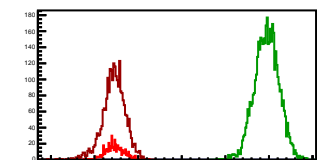
Entries: 1582	Entries: 4629	Entries: 485
Mean: 6.9983 \pm 0.0053	Mean: 10.9041 \pm 0.0061	Mean: 7.5738 \pm 0.0090
Std Dev: 0.2094 \pm 0.0037	Std Dev: 0.4160 \pm 0.0043	Std Dev: 0.1991 \pm 0.0064

**Cycle 8, NegHel**

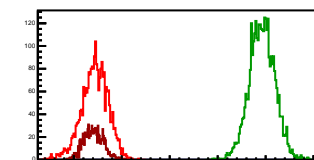
Entries: 472	Entries: 4644	Entries: 1091
Mean: 7.5098 \pm 0.0093	Mean: 10.8477 \pm 0.0046	Mean: 7.4907 \pm 0.0061
Std Dev: 0.2010 \pm 0.0065	Std Dev: 0.3145 \pm 0.0033	Std Dev: 0.2003 \pm 0.0043

**Cycle 9, NegHel**

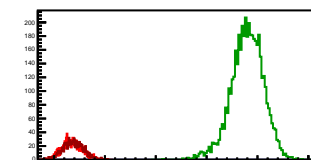
Entries: 525	Entries: 4620	Entries: 2450
Mean: 7.4556 \pm 0.0094	Mean: 10.9485 \pm 0.0041	Mean: 7.4394 \pm 0.0054
Std Dev: 0.2151 \pm 0.0066	Std Dev: 0.2811 \pm 0.0029	Std Dev: 0.2678 \pm 0.0039

**Cycle 10, NegHel**

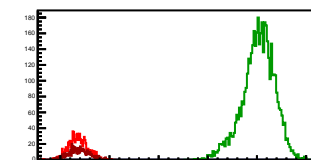
Entries: 2524	Entries: 3493	Entries: 955
Mean: 7.4337 \pm 0.0056	Mean: 10.9251 \pm 0.0045	Mean: 7.4114 \pm 0.0065
Std Dev: 0.2793 \pm 0.0039	Std Dev: 0.2656 \pm 0.0032	Std Dev: 0.2007 \pm 0.0046

**Cycle 11, NegHel**

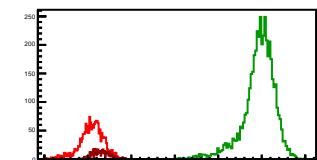
Entries: 955	Entries: 4611	Entries: 890
Mean: 7.3443 \pm 0.0066	Mean: 10.7951 \pm 0.0047	Mean: 7.3767 \pm 0.0067
Std Dev: 0.2025 \pm 0.0046	Std Dev: 0.3201 \pm 0.0033	Std Dev: 0.2002 \pm 0.0047

**Cycle 12, NegHel**

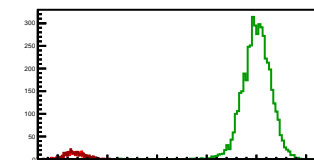
Entries: 697	Entries: 4650	Entries: 491
Mean: 7.3599 \pm 0.0066	Mean: 11.0311 \pm 0.0048	Mean: 7.3751 \pm 0.0096
Std Dev: 0.1975 \pm 0.0047	Std Dev: 0.3282 \pm 0.0034	Std Dev: 0.2119 \pm 0.0068

**Cycle 13, NegHel**

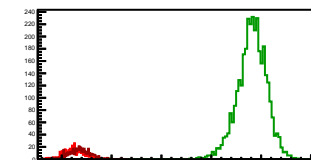
Entries: 1817	Entries: 4697	Entries: 532
Mean: 7.0849 \pm 0.0068	Mean: 10.9316 \pm 0.0055	Mean: 7.4394 \pm 0.0054
Std Dev: 0.2167 \pm 0.0046	Std Dev: 0.3743 \pm 0.0039	Std Dev: 0.1934 \pm 0.0059

**Cycle 14, NegHel**

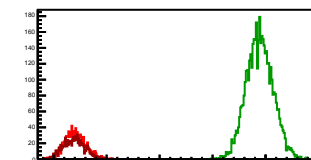
Entries: 515	Entries: 4629	Entries: 457
Mean: 7.3313 \pm 0.0083	Mean: 11.0063 \pm 0.0041	Mean: 7.3476 \pm 0.0088
Std Dev: 0.1880 \pm 0.0059	Std Dev: 0.2771 \pm 0.0029	Std Dev: 0.1884 \pm 0.0062

**Cycle 15, NegHel**

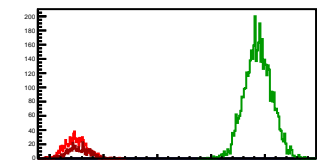
Entries: 555	Entries: 3386	Entries: 478
Mean: 7.2485 \pm 0.0089	Mean: 10.8155 \pm 0.0050	Mean: 7.3595 \pm 0.0094
Std Dev: 0.2091 \pm 0.0063	Std Dev: 0.2921 \pm 0.0035	Std Dev: 0.2058 \pm 0.0067

**Cycle 16, NegHel**

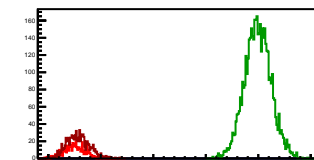
Entries: 1120	Entries: 4651	Entries: 860
Mean: 7.4055 \pm 0.0059	Mean: 10.8884 \pm 0.0037	Mean: 7.3812 \pm 0.0068
Std Dev: 0.1981 \pm 0.0042	Std Dev: 0.2512 \pm 0.0026	Std Dev: 0.1982 \pm 0.0048

**Cycle 17, NegHel**

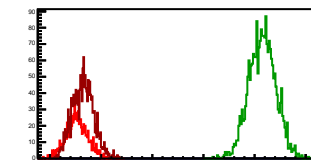
Entries: 868	Entries: 4607	Entries: 502
Mean: 7.4821 \pm 0.0068	Mean: 10.8736 \pm 0.0037	Mean: 7.5350 \pm 0.0093
Std Dev: 0.1999 \pm 0.0046	Std Dev: 0.2514 \pm 0.0026	Std Dev: 0.2076 \pm 0.0066

**Cycle 18, NegHel**

Entries: 497	Entries: 4630	Entries: 880
Mean: 7.5003 \pm 0.0093	Mean: 10.9903 \pm 0.0037	Mean: 7.5666 \pm 0.0071
Std Dev: 0.2073 \pm 0.0066	Std Dev: 0.2516 \pm 0.0026	Std Dev: 0.2120 \pm 0.0051

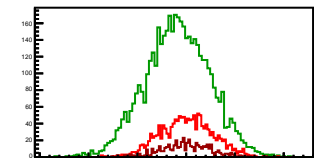
**Cycle 19, NegHel**

Entries: 895	Entries: 2289	Entries: 1644
Mean: 7.5174 \pm 0.0071	Mean: 11.1530 \pm 0.0055	Mean: 7.6456 \pm 0.0052
Std Dev: 0.2132 \pm 0.0050	Std Dev: 0.2640 \pm 0.0039	Std Dev: 0.2098 \pm 0.0036



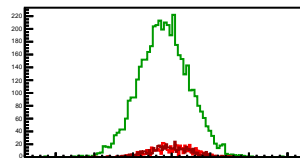
Cycle 1, Diffs

Entries: 1503	Entries: 4636	Entries: 501
Mean: 0.0047 +/- 0.0069	Mean: -0.0896 +/- 0.0048	Mean: -0.0056 +/- 0.0112
Std Dev: 0.2677 +/- 0.0049	Std Dev: 0.3296 +/- 0.0034	Std Dev: 0.2508 +/- 0.0079



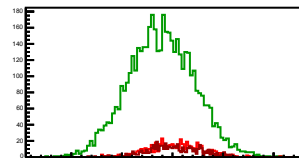
Cycle 2, Diffs

Entries: 480	Entries: 4637	Entries: 558
Mean: 0.0061 +/- 0.0122	Mean: -0.0974 +/- 0.0047	Mean: -0.0217 +/- 0.0112
Std Dev: 0.2683 +/- 0.0087	Std Dev: 0.3223 +/- 0.0033	Std Dev: 0.2649 +/- 0.0079



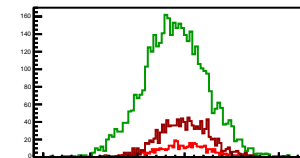
Cycle 3, Diffs

Entries: 525	Entries: 4694	Entries: 489
Mean: 0.0270 +/- 0.0119	Mean: -0.1099 +/- 0.0047	Mean: 0.0109 +/- 0.0118
Std Dev: 0.2720 +/- 0.0084	Std Dev: 0.3248 +/- 0.0034	Std Dev: 0.2602 +/- 0.0083



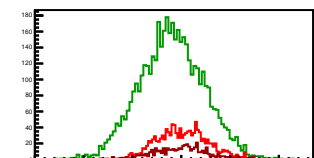
Cycle 4, Diffs

Entries: 482	Entries: 4254	Entries: 1225
Mean: -0.0166 +/- 0.0130	Mean: -0.1023 +/- 0.0051	Mean: -0.0041 +/- 0.0076
Std Dev: 0.2847 +/- 0.0092	Std Dev: 0.3332 +/- 0.0036	Std Dev: 0.2669 +/- 0.0054



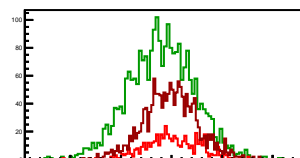
Cycle 5, Diffs

Entries: 1233	Entries: 4579	Entries: 494
Mean: 0.0097 +/- 0.0073	Mean: -0.1009 +/- 0.0048	Mean: -0.0043 +/- 0.0124
Std Dev: 0.2580 +/- 0.0052	Std Dev: 0.3281 +/- 0.0034	Std Dev: 0.2746 +/- 0.0087



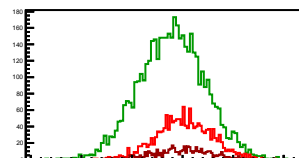
Cycle 6, Diffs

Entries: 488	Entries: 2494	Entries: 1579
Mean: 0.0098 +/- 0.0119	Mean: -0.1006 +/- 0.0064	Mean: -0.0089 +/- 0.0066
Std Dev: 0.2625 +/- 0.0084	Std Dev: 0.3214 +/- 0.0046	Std Dev: 0.2631 +/- 0.0047



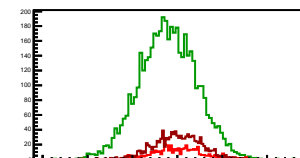
Cycle 7, Diffs

Entries: 1582	Entries: 4629	Entries: 485
Mean: 0.0131 +/- 0.0068	Mean: -0.1056 +/- 0.0047	Mean: -0.0062 +/- 0.0121
Std Dev: 0.2702 +/- 0.0048	Std Dev: 0.3235 +/- 0.0034	Std Dev: 0.2672 +/- 0.0086



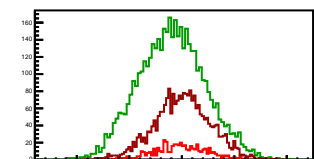
Cycle 8, Diffs

Entries: 472	Entries: 4644	Entries: 1091
Mean: 0.0001 +/- 0.0131	Mean: -0.1032 +/- 0.0047	Mean: 0.0050 +/- 0.0078
Std Dev: 0.2847 +/- 0.0092	Std Dev: 0.3187 +/- 0.0033	Std Dev: 0.2591 +/- 0.0055



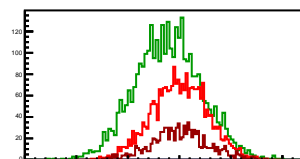
Cycle 9, Diffs

Entries: 525	Entries: 4620	Entries: 2458
Mean: -0.0075 +/- 0.0111	Mean: -0.0952 +/- 0.0047	Mean: 0.0053 +/- 0.0054
Std Dev: 0.2540 +/- 0.0078	Std Dev: 0.3190 +/- 0.0033	Std Dev: 0.2672 +/- 0.0038



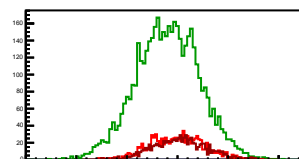
Cycle 10, Diffs

Entries: 2524	Entries: 2493	Entries: 955
Mean: 0.0021 +/- 0.0054	Mean: -0.1075 +/- 0.0055	Mean: 0.0063 +/- 0.0087
Std Dev: 0.2711 +/- 0.0038	Std Dev: 0.3237 +/- 0.0039	Std Dev: 0.2703 +/- 0.0062



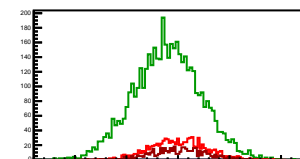
Cycle 11, Diffs

Entries: 955	Entries: 4611	Entries: 890
Mean: -0.0020 +/- 0.0068	Mean: -0.0975 +/- 0.0046	Mean: 0.0165 +/- 0.0090
Std Dev: 0.2725 +/- 0.0062	Std Dev: 0.3153 +/- 0.0033	Std Dev: 0.2681 +/- 0.0064



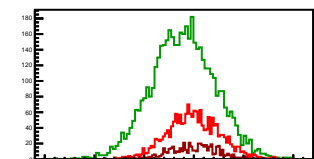
Cycle 12, Diffs

Entries: 697	Entries: 4650	Entries: 491
Mean: 0.0037 +/- 0.0090	Mean: -0.1071 +/- 0.0048	Mean: 0.0073 +/- 0.0121
Std Dev: 0.2695 +/- 0.0064	Std Dev: 0.3242 +/- 0.0034	Std Dev: 0.2680 +/- 0.0086



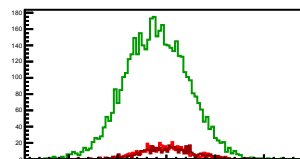
Cycle 13, Diffs

Entries: 1817	Entries: 4697	Entries: 532
Mean: -0.0008 +/- 0.0062	Mean: -0.1074 +/- 0.0047	Mean: -0.0015 +/- 0.0105
Std Dev: 0.2641 +/- 0.0044	Std Dev: 0.3200 +/- 0.0033	Std Dev: 0.2413 +/- 0.0074



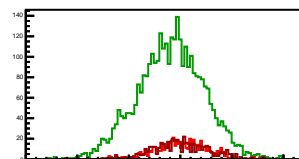
Cycle 14, Diffs

Entries: 515	Entries: 4629	Entries: 457
Mean: -0.0116 +/- 0.0108	Mean: -0.1015 +/- 0.0047	Mean: 0.0097 +/- 0.0123
Std Dev: 0.2458 +/- 0.0077	Std Dev: 0.3231 +/- 0.0034	Std Dev: 0.2628 +/- 0.0087



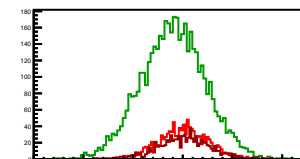
Cycle 15, Diffs

Entries: 555	Entries: 3386	Entries: 478
Mean: 0.0130 +/- 0.0108	Mean: -0.0943 +/- 0.0055	Mean: -0.0013 +/- 0.0127
Std Dev: 0.2544 +/- 0.0076	Std Dev: 0.3224 +/- 0.0039	Std Dev: 0.2775 +/- 0.0090



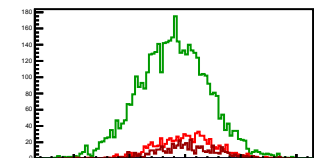
Cycle 16, Diffs

Entries: 1120	Entries: 4651	Entries: 860
Mean: 0.0065 +/- 0.0074	Mean: -0.0992 +/- 0.0047	Mean: 0.0101 +/- 0.0088
Std Dev: 0.2477 +/- 0.0052	Std Dev: 0.3216 +/- 0.0033	Std Dev: 0.2595 +/- 0.0063



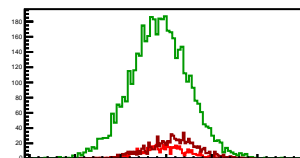
Cycle 17, Diffs

Entries: 868	Entries: 4607	Entries: 502
Mean: 0.0008 +/- 0.0092	Mean: -0.1033 +/- 0.0046	Mean: 0.0150 +/- 0.0121
Std Dev: 0.2701 +/- 0.0065	Std Dev: 0.3151 +/- 0.0033	Std Dev: 0.2712 +/- 0.0086



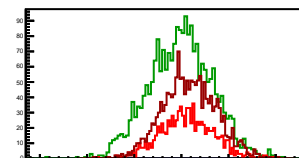
Cycle 18, Diffs

Entries: 497	Entries: 4630	Entries: 880
Mean: -0.0057 +/- 0.0119	Mean: -0.0746 +/- 0.0047	Mean: 0.0667 +/- 0.0091
Std Dev: 0.2659 +/- 0.0084	Std Dev: 0.3185 +/- 0.0033	Std Dev: 0.2689 +/- 0.0064



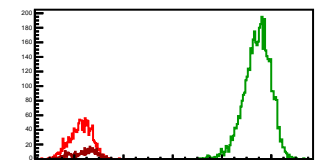
Cycle 19, Diffs

Entries: 895	Entries: 2289	Entries: 1644
Mean: 0.0602 +/- 0.0094	Mean: -0.0084 +/- 0.0070	Mean: 0.0821 +/- 0.0070
Std Dev: 0.2816 +/- 0.0067	Std Dev: 0.3328 +/- 0.0049	Std Dev: 0.2831 +/- 0.0049



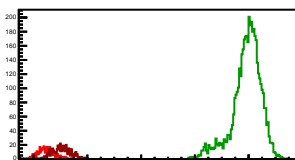
Cycle 1, Sums

Entries: 1503	Entries: 4636	Entries: 501
Mean: 14.2655 +/- 0.0115	Mean: 21.4318 +/- 0.0080	Mean: 14.3912 +/- 0.0216
Std Dev: 0.4442 +/- 0.0081	Std Dev: 0.5422 +/- 0.0056	Std Dev: 0.4833 +/- 0.0153



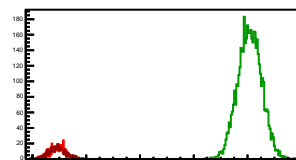
Cycle 2, Sums

Entries: 480	Entries: 4637	Entries: 558
Mean: 14.4519 +/- 0.0140	Mean: 21.9284 +/- 0.0079	Mean: 15.0414 +/- 0.0144
Std Dev: 0.3057 +/- 0.0099	Std Dev: 0.5406 +/- 0.0056	Std Dev: 0.3391 +/- 0.0102



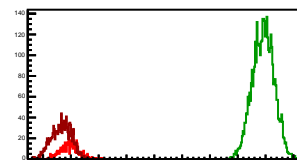
Cycle 3, Sums

Entries: 525	Entries: 4694	Entries: 489
Mean: 14.9346 +/- 0.0130	Mean: 22.0807 +/- 0.0064	Mean: 14.9104 +/- 0.0141
Std Dev: 0.2969 +/- 0.0092	Std Dev: 0.4396 +/- 0.0045	Std Dev: 0.3117 +/- 0.0100



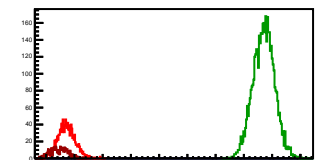
Cycle 4, Sums

Entries: 482	Entries: 4254	Entries: 1225
Mean: 14.9611 +/- 0.0147	Mean: 21.9152 +/- 0.0059	Mean: 14.6621 +/- 0.0101
Std Dev: 0.3223 +/- 0.0104	Std Dev: 0.3862 +/- 0.0042	Std Dev: 0.3543 +/- 0.0072



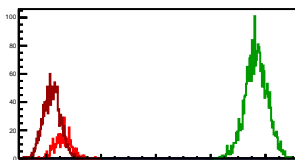
Cycle 5, Sums

Entries: 1233	Entries: 4579	Entries: 494
Mean: 14.7102 +/- 0.0088	Mean: 21.7072 +/- 0.0056	Mean: 14.4612 +/- 0.0136
Std Dev: 0.3100 +/- 0.0062	Std Dev: 0.3799 +/- 0.0046	Std Dev: 0.3022 +/- 0.0096



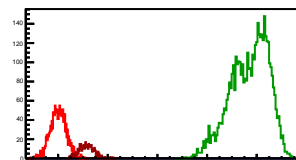
Cycle 6, Sums

Entries: 488	Entries: 2494	Entries: 1579
Mean: 14.6139 +/- 0.0132	Mean: 21.5627 +/- 0.0061	Mean: 14.2060 +/- 0.0078
Std Dev: 0.2917 +/- 0.0093	Std Dev: 0.4068 +/- 0.0058	Std Dev: 0.3087 +/- 0.0055



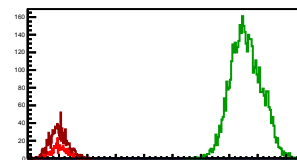
Cycle 7, Sums

Entries: 1582	Entries: 4629	Entries: 485
Mean: 14.0097 +/- 0.0082	Mean: 21.7027 +/- 0.0113	Mean: 15.1414 +/- 0.0133
Std Dev: 0.3244 +/- 0.0058	Std Dev: 0.7675 +/- 0.0080	Std Dev: 0.2321 +/- 0.0094



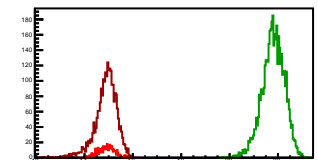
Cycle 8, Sums

Entries: 472	Entries: 4644	Entries: 1091
Mean: 15.0196 +/- 0.0139	Mean: 21.5922 +/- 0.0079	Mean: 14.8865 +/- 0.0094
Std Dev: 0.3017 +/- 0.0098	Std Dev: 0.5387 +/- 0.0056	Std Dev: 0.3107 +/- 0.0067



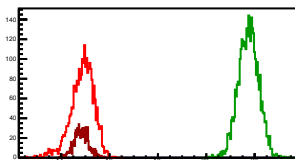
Cycle 9, Sums

Entries: 525	Entries: 4620	Entries: 2450
Mean: 14.9037 +/- 0.0146	Mean: 21.8019 +/- 0.0068	Mean: 14.8841 +/- 0.0093
Std Dev: 0.3344 +/- 0.0103	Std Dev: 0.4601 +/- 0.0048	Std Dev: 0.4605 +/- 0.0066



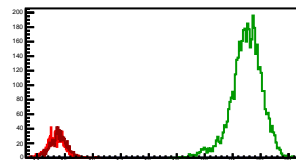
Cycle 10, Sums

Entries: 2524	Entries: 3493	Entries: 955
Mean: 14.8696 +/- 0.0096	Mean: 21.7427 +/- 0.0071	Mean: 14.8292 +/- 0.0096
Std Dev: 0.4843 +/- 0.0069	Std Dev: 0.4188 +/- 0.0050	Std Dev: 0.2959 +/- 0.0068



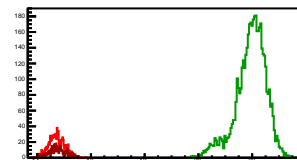
Cycle 11, Sums

Entries: 955	Entries: 4611	Entries: 890
Mean: 14.6965 +/- 0.0099	Mean: 21.4927 +/- 0.0061	Mean: 14.7698 +/- 0.0099
Std Dev: 0.3065 +/- 0.0070	Std Dev: 0.5533 +/- 0.0058	Std Dev: 0.2962 +/- 0.0070



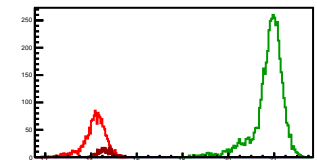
Cycle 12, Sums

Entries: 697	Entries: 4650	Entries: 491
Mean: 14.7235 +/- 0.0099	Mean: 21.9551 +/- 0.0063	Mean: 14.7576 +/- 0.0136
Std Dev: 0.2968 +/- 0.0070	Std Dev: 0.5857 +/- 0.0059	Std Dev: 0.3015 +/- 0.0096



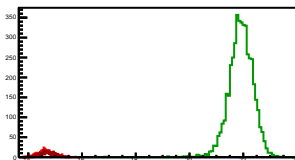
Cycle 13, Sums

Entries: 1817	Entries: 4697	Entries: 532
Mean: 14.1643 +/- 0.0115	Mean: 21.7555 +/- 0.0098	Mean: 14.8841 +/- 0.0125
Std Dev: 0.4897 +/- 0.0081	Std Dev: 0.6736 +/- 0.0069	Std Dev: 0.2883 +/- 0.0088



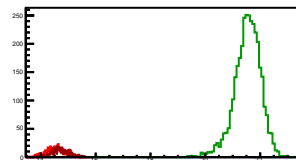
Cycle 14, Sums

Entries: 515	Entries: 3629	Entries: 457
Mean: 14.8509 +/- 0.0126	Mean: 21.9111 +/- 0.0066	Mean: 14.7050 +/- 0.0127
Std Dev: 0.2852 +/- 0.0089	Std Dev: 0.4501 +/- 0.0047	Std Dev: 0.2721 +/- 0.0090



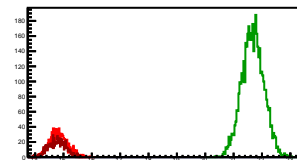
Cycle 15, Sums

Entries: 555	Entries: 3386	Entries: 478
Mean: 14.8091 +/- 0.0144	Mean: 21.5368 +/- 0.0083	Mean: 14.7177 +/- 0.0140
Std Dev: 0.3401 +/- 0.0102	Std Dev: 0.4839 +/- 0.0059	Std Dev: 0.3067 +/- 0.0099



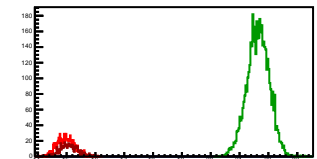
Cycle 16, Sums

Entries: 1120	Entries: 4651	Entries: 860
Mean: 14.8176 +/- 0.0093	Mean: 21.6776 +/- 0.0057	Mean: 14.7725 +/- 0.0104
Std Dev: 0.3107 +/- 0.0066	Std Dev: 0.3877 +/- 0.0040	Std Dev: 0.3056 +/- 0.0074



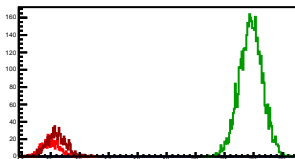
Cycle 17, Sums

Entries: 868	Entries: 4607	Entries: 502
Mean: 14.9650 +/- 0.0101	Mean: 21.6430 +/- 0.0057	Mean: 15.0849 +/- 0.0142
Std Dev: 0.2985 +/- 0.0072	Std Dev: 0.3853 +/- 0.0040	Std Dev: 0.3172 +/- 0.0100



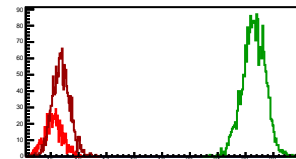
Cycle 18, Sums

Entries: 497	Entries: 4630	Entries: 880
Mean: 14.8949 +/- 0.0130	Mean: 21.9059 +/- 0.0058	Mean: 15.1999 +/- 0.0109
Std Dev: 0.3106 +/- 0.0099	Std Dev: 0.3980 +/- 0.0041	Std Dev: 0.3241 +/- 0.0077



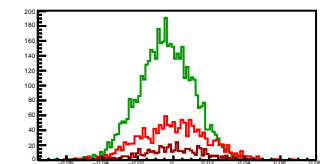
Cycle 19, Sums

Entries: 895	Entries: 2289	Entries: 1644
Mean: 15.0091 +/- 0.0108	Mean: 22.2877 +/- 0.0085	Mean: 15.3733 +/- 0.0079
Std Dev: 0.3228 +/- 0.0076	Std Dev: 0.4082 +/- 0.0060	Std Dev: 0.3196 +/- 0.0056



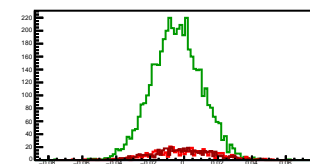
Cycle 1, Asyms

Entries: 1503	Entries: 4636	Entries: 501
Mean: 0.0003 +/- 0.0005	Mean: -0.0042 +/- 0.0002	Mean: -0.0004 +/- 0.0008
Std Dev: 0.0188 +/- 0.0003	Std Dev: 0.0154 +/- 0.0002	Std Dev: 0.0174 +/- 0.0006



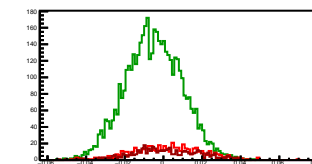
Cycle 2, Asyms

Entries: 480	Entries: 4637	Entries: 558
Mean: 0.0004 +/- 0.0008	Mean: -0.0044 +/- 0.0002	Mean: -0.0014 +/- 0.0007
Std Dev: 0.0185 +/- 0.0006	Std Dev: 0.0147 +/- 0.0002	Std Dev: 0.0176 +/- 0.0005



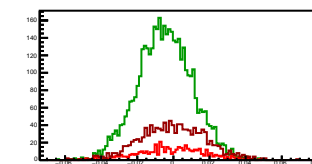
Cycle 3, Asyms

Entries: 525	Entries: 4694	Entries: 489
Mean: 0.0018 +/- 0.0008	Mean: -0.0050 +/- 0.0002	Mean: 0.0007 +/- 0.0008
Std Dev: 0.0181 +/- 0.0006	Std Dev: 0.0147 +/- 0.0002	Std Dev: 0.0174 +/- 0.0006



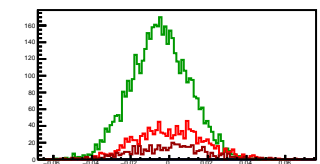
Cycle 4, Asyms

Entries: 482	Entries: 4254	Entries: 1225
Mean: -0.0011 +/- 0.0009	Mean: -0.0047 +/- 0.0002	Mean: -0.0003 +/- 0.0005
Std Dev: 0.0190 +/- 0.0006	Std Dev: 0.0152 +/- 0.0002	Std Dev: 0.0182 +/- 0.0004



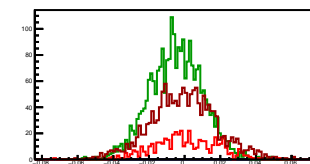
Cycle 5, Asyms

Entries: 1233	Entries: 4579	Entries: 494
Mean: 0.0007 +/- 0.0005	Mean: -0.0047 +/- 0.0002	Mean: -0.0003 +/- 0.0009
Std Dev: 0.0175 +/- 0.0004	Std Dev: 0.0151 +/- 0.0002	Std Dev: 0.0190 +/- 0.0006



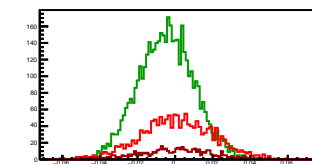
Cycle 6, Asyms

Entries: 488	Entries: 2494	Entries: 1579
Mean: 0.0007 +/- 0.0008	Mean: -0.0046 +/- 0.0003	Mean: -0.0006 +/- 0.0005
Std Dev: 0.0179 +/- 0.0006	Std Dev: 0.0148 +/- 0.0002	Std Dev: 0.0185 +/- 0.0003



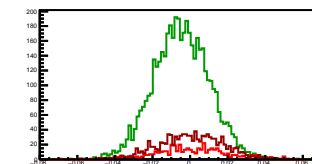
Cycle 7, Asyms

Entries: 1582	Entries: 4629	Entries: 485
Mean: 0.0009 +/- 0.0005	Mean: -0.0049 +/- 0.0002	Mean: -0.0004 +/- 0.0008
Std Dev: 0.0192 +/- 0.0003	Std Dev: 0.0149 +/- 0.0002	Std Dev: 0.0176 +/- 0.0006



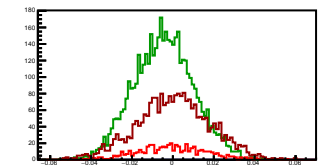
Cycle 8, Asyms

Entries: 472	Entries: 4644	Entries: 1091
Mean: -0.0000 +/- 0.0009	Mean: -0.0048 +/- 0.0002	Mean: 0.0003 +/- 0.0005
Std Dev: 0.0189 +/- 0.0006	Std Dev: 0.0148 +/- 0.0002	Std Dev: 0.0172 +/- 0.0004



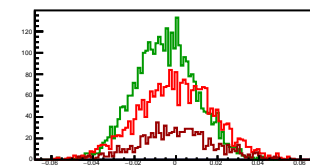
Cycle 9, Asyms

Entries: 525	Entries: 4620	Entries: 2458
Mean: -0.0005 +/- 0.0007	Mean: -0.0044 +/- 0.0002	Mean: 0.0004 +/- 0.0004
Std Dev: 0.0170 +/- 0.0005	Std Dev: 0.0146 +/- 0.0002	Std Dev: 0.0179 +/- 0.0003



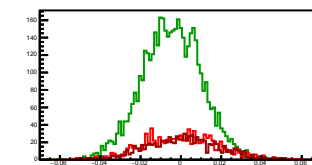
Cycle 10, Asyms

Entries: 2524	Entries: 3493	Entries: 955
Mean: 0.0002 +/- 0.0004	Mean: -0.0049 +/- 0.0003	Mean: 0.0004 +/- 0.0006
Std Dev: 0.0182 +/- 0.0003	Std Dev: 0.0149 +/- 0.0002	Std Dev: 0.0182 +/- 0.0004



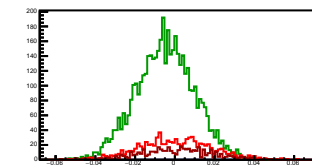
Cycle 11, Asyms

Entries: 955	Entries: 4611	Entries: 890
Mean: -0.0001 +/- 0.0006	Mean: -0.0045 +/- 0.0002	Mean: 0.0011 +/- 0.0006
Std Dev: 0.0185 +/- 0.0004	Std Dev: 0.0147 +/- 0.0002	Std Dev: 0.0181 +/- 0.0004



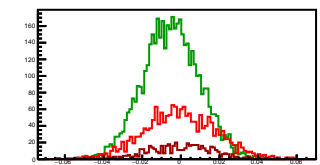
Cycle 12, Asyms

Entries: 697	Entries: 4650	Entries: 491
Mean: 0.0002 +/- 0.0006	Mean: -0.0049 +/- 0.0002	Mean: 0.0005 +/- 0.0008
Std Dev: 0.0183 +/- 0.0004	Std Dev: 0.0148 +/- 0.0002	Std Dev: 0.0181 +/- 0.0006



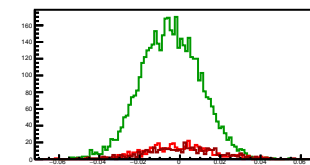
Cycle 13, Asyms

Entries: 1817	Entries: 4697	Entries: 532
Mean: -0.0004 +/- 0.0006	Mean: -0.0049 +/- 0.0002	Mean: -0.0001 +/- 0.0007
Std Dev: 0.0186 +/- 0.0003	Std Dev: 0.0147 +/- 0.0002	Std Dev: 0.0165 +/- 0.0005



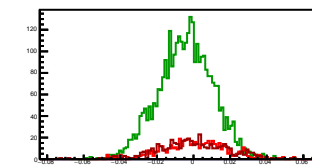
Cycle 14, Asyms

Entries: 515	Entries: 4629	Entries: 457
Mean: -0.0008 +/- 0.0007	Mean: -0.0046 +/- 0.0002	Mean: 0.0007 +/- 0.0008
Std Dev: 0.0168 +/- 0.0005	Std Dev: 0.0147 +/- 0.0002	Std Dev: 0.0178 +/- 0.0006



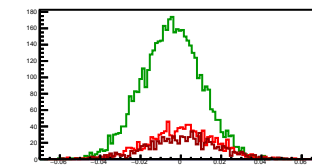
Cycle 15, Asyms

Entries: 555	Entries: 3386	Entries: 478
Mean: 0.0009 +/- 0.0007	Mean: -0.0044 +/- 0.0003	Mean: -0.0001 +/- 0.0009
Std Dev: 0.0175 +/- 0.0005	Std Dev: 0.0150 +/- 0.0002	Std Dev: 0.0188 +/- 0.0006



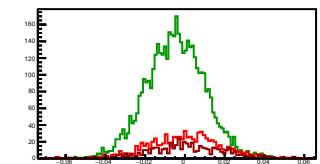
Cycle 16, Asyms

Entries: 1120	Entries: 4651	Entries: 860
Mean: 0.0004 +/- 0.0005	Mean: -0.0046 +/- 0.0002	Mean: 0.0007 +/- 0.0006
Std Dev: 0.0167 +/- 0.0004	Std Dev: 0.0148 +/- 0.0002	Std Dev: 0.0176 +/- 0.0004



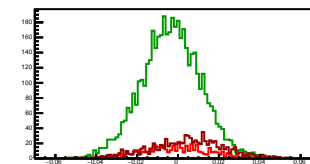
Cycle 17, Asyms

Entries: 868	Entries: 4607	Entries: 502
Mean: 0.0001 +/- 0.0006	Mean: -0.0048 +/- 0.0002	Mean: 0.0010 +/- 0.0008
Std Dev: 0.0180 +/- 0.0004	Std Dev: 0.0146 +/- 0.0002	Std Dev: 0.0180 +/- 0.0006



Cycle 18, Asyms

Entries: 497	Entries: 4630	Entries: 880
Mean: -0.0004 +/- 0.0008	Mean: -0.0034 +/- 0.0002	Mean: 0.0044 +/- 0.0006
Std Dev: 0.0177 +/- 0.0006	Std Dev: 0.0145 +/- 0.0002	Std Dev: 0.0177 +/- 0.0004



Cycle 19, Asyms

Entries: 895	Entries: 2289	Entries: 1644
Mean: 0.0040 +/- 0.0006	Mean: -0.0004 +/- 0.0003	Mean: 0.0053 +/- 0.0005
Std Dev: 0.0186 +/- 0.0004	Std Dev: 0.0149 +/- 0.0002	Std Dev: 0.0184 +/- 0.0003

