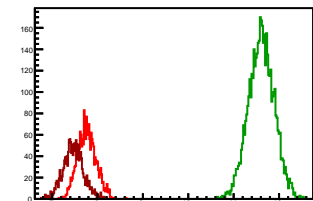


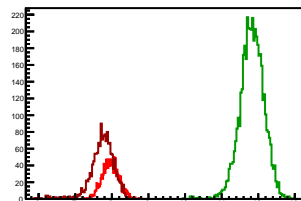
Cycle 1, PosHel

Entries: 1950	Entries: 4692	Entries: 1561
Mean: 7.7634 +/- 0.0046	Mean: 11.6101 +/- 0.0041	Mean: 7.4658 +/- 0.0056
Std Dev: 0.2043 +/- 0.0033	Std Dev: 0.2838 +/- 0.0029	Std Dev: 0.2219 +/- 0.0040



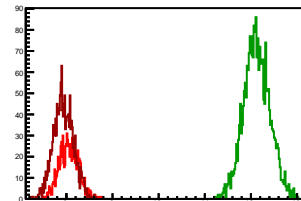
Cycle 2, PosHel

Entries: 1556	Entries: 4634	Entries: 1564
Mean: 7.9657 +/- 0.0057	Mean: 11.8279 +/- 0.0048	Mean: 7.7345 +/- 0.0086
Std Dev: 0.2257 +/- 0.0040	Std Dev: 0.3299 +/- 0.0034	Std Dev: 0.3397 +/- 0.0061



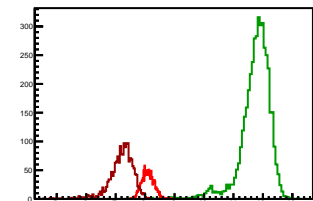
Cycle 3, PosHel

Entries: 910	Entries: 2497	Entries: 1550
Mean: 8.0563 +/- 0.0068	Mean: 12.1252 +/- 0.0057	Mean: 7.9374 +/- 0.0055
Std Dev: 0.2040 +/- 0.0048	Std Dev: 0.2834 +/- 0.0040	Std Dev: 0.2160 +/- 0.0039



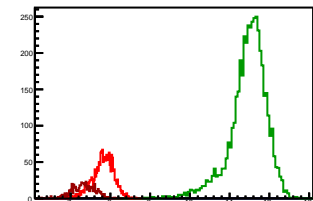
Cycle 4, PosHel

Entries: 1558	Entries: 4371	Entries: 1781
Mean: 8.0935 +/- 0.0052	Mean: 11.7476 +/- 0.0079	Mean: 7.2024 +/- 0.0098
Std Dev: 0.2058 +/- 0.0037	Std Dev: 0.5212 +/- 0.0056	Std Dev: 0.4134 +/- 0.0069



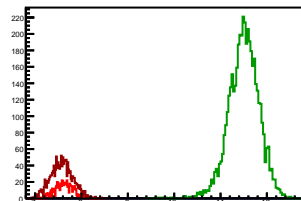
Cycle 5, PosHel

Entries: 1762	Entries: 4610	Entries: 606
Mean: 7.8158 +/- 0.0065	Mean: 11.4583 +/- 0.0070	Mean: 7.3170 +/- 0.0116
Std Dev: 0.2708 +/- 0.0046	Std Dev: 0.4759 +/- 0.0050	Std Dev: 0.2854 +/- 0.0082



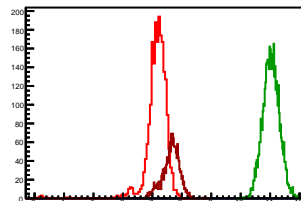
Cycle 6, PosHel

Entries: 602	Entries: 4608	Entries: 1477
Mean: 7.6294 +/- 0.0081	Mean: 11.5005 +/- 0.0048	Mean: 7.5724 +/- 0.0061
Std Dev: 0.1992 +/- 0.0057	Std Dev: 0.3270 +/- 0.0034	Std Dev: 0.2325 +/- 0.0043



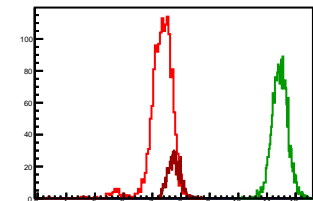
Cycle 7, PosHel

Entries: 2113	Entries: 4675	Entries: 1621
Mean: 7.1474 +/- 0.0068	Mean: 11.0334 +/- 0.0041	Mean: 7.6304 +/- 0.0072
Std Dev: 0.4029 +/- 0.0062	Std Dev: 0.2798 +/- 0.0029	Std Dev: 0.2886 +/- 0.0051



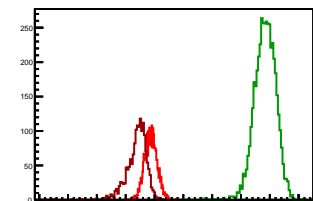
Cycle 8, PosHel

Entries: 1599	Entries: 2135	Entries: 782
Mean: 7.3034 +/- 0.0109	Mean: 11.4476 +/- 0.0060	Mean: 7.7609 +/- 0.0079
Std Dev: 0.4346 +/- 0.0077	Std Dev: 0.2769 +/- 0.0042	Std Dev: 0.2209 +/- 0.0056



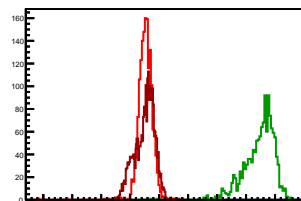
Cycle 9, PosHel

Entries: 2595	Entries: 4559	Entries: 1601
Mean: 7.8740 +/- 0.0043	Mean: 11.8338 +/- 0.0055	Mean: 7.3782 +/- 0.0090
Std Dev: 0.2182 +/- 0.0030	Std Dev: 0.3720 +/- 0.0039	Std Dev: 0.3596 +/- 0.0064



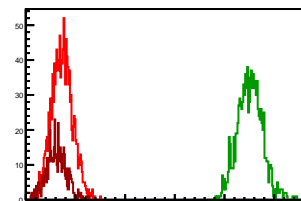
Cycle 10, PosHel

Entries: 1600	Entries: 1372	Entries: 2559
Mean: 7.5295 +/- 0.0061	Mean: 11.4581 +/- 0.0141	Mean: 7.5040 +/- 0.0068
Std Dev: 0.2428 +/- 0.0043	Std Dev: 0.5216 +/- 0.0100	Std Dev: 0.3448 +/- 0.0048



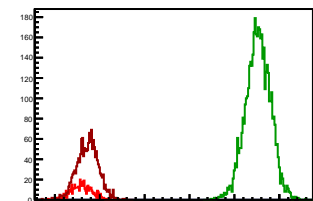
Cycle 11, PosHel

Entries: 1425	Entries: 1107	Entries: 506
Mean: 7.7320 +/- 0.0056	Mean: 11.5131 +/- 0.0076	Mean: 7.6141 +/- 0.0088
Std Dev: 0.2100 +/- 0.0039	Std Dev: 0.2514 +/- 0.0053	Std Dev: 0.1990 +/- 0.0063



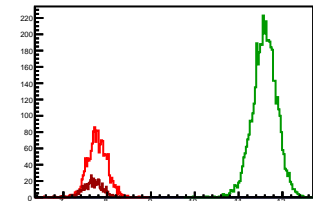
Cycle 12, PosHel

Entries: 495	Entries: 4577	Entries: 1573
Mean: 7.5856 +/- 0.0106	Mean: 11.5259 +/- 0.0041	Mean: 7.7292 +/- 0.0060
Std Dev: 0.2368 +/- 0.0075	Std Dev: 0.2779 +/- 0.0029	Std Dev: 0.2387 +/- 0.0043



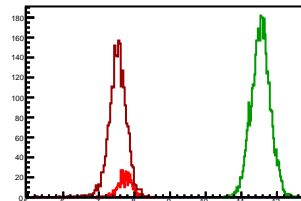
Cycle 13, PosHel

Entries: 1573	Entries: 4660	Entries: 570
Mean: 7.7766 +/- 0.0056	Mean: 11.5950 +/- 0.0041	Mean: 7.6780 +/- 0.0090
Std Dev: 0.2230 +/- 0.0040	Std Dev: 0.2777 +/- 0.0029	Std Dev: 0.2160 +/- 0.0064



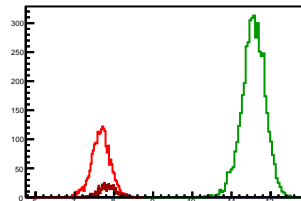
Cycle 14, PosHel

Entries: 573	Entries: 4617	Entries: 2289
Mean: 7.7358 +/- 0.0084	Mean: 11.5455 +/- 0.0039	Mean: 7.5275 +/- 0.0055
Std Dev: 0.2017 +/- 0.0060	Std Dev: 0.2639 +/- 0.0027	Std Dev: 0.2628 +/- 0.0039



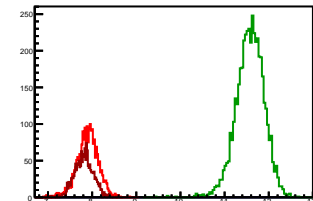
Cycle 15, PosHel

Entries: 2230	Entries: 4611	Entries: 575
Mean: 7.6638 +/- 0.0052	Mean: 11.5583 +/- 0.0045	Mean: 7.8284 +/- 0.0096
Std Dev: 0.2433 +/- 0.0036	Std Dev: 0.3031 +/- 0.0032	Std Dev: 0.2290 +/- 0.0068



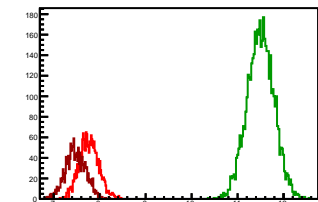
Cycle 16, PosHel

Entries: 2189	Entries: 4636	Entries: 1564
Mean: 7.8952 +/- 0.0052	Mean: 11.5753 +/- 0.0047	Mean: 7.8135 +/- 0.0054
Std Dev: 0.2453 +/- 0.0037	Std Dev: 0.3182 +/- 0.0033	Std Dev: 0.2118 +/- 0.0038



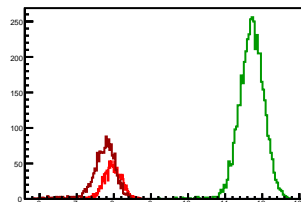
Cycle 1, NegHel

Entries: 1950	Entries: 4692	Entries: 1561
Mean: 7.7692 +/- 0.0048	Mean: 11.4994 +/- 0.0043	Mean: 7.4789 +/- 0.0056
Std Dev: 0.2114 +/- 0.0034	Std Dev: 0.2914 +/- 0.0030	Std Dev: 0.2194 +/- 0.0039



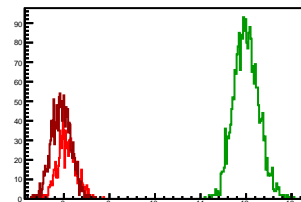
Cycle 2, NegHel

Entries: 1556	Entries: 4634	Entries: 1564
Mean: 7.9694 +/- 0.0059	Mean: 11.7129 +/- 0.0049	Mean: 7.7275 +/- 0.0087
Std Dev: 0.2312 +/- 0.0041	Std Dev: 0.3349 +/- 0.0035	Std Dev: 0.3442 +/- 0.0062



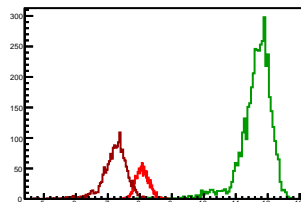
Cycle 3, NegHel

Entries: 910	Entries: 2497	Entries: 1550
Mean: 8.0619 +/- 0.0069	Mean: 12.0031 +/- 0.0054	Mean: 7.9431 +/- 0.0054
Std Dev: 0.2073 +/- 0.0049	Std Dev: 0.2704 +/- 0.0038	Std Dev: 0.2114 +/- 0.0038



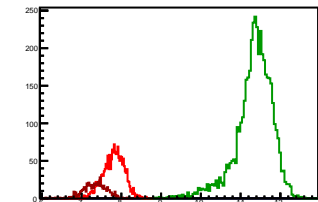
Cycle 4, NegHel

Entries: 1558	Entries: 4371	Entries: 1781
Mean: 8.0891 +/- 0.0052	Mean: 11.6268 +/- 0.0078	Mean: 7.2062 +/- 0.0096
Std Dev: 0.2038 +/- 0.0037	Std Dev: 0.5175 +/- 0.0055	Std Dev: 0.4061 +/- 0.0068



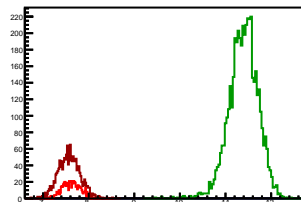
Cycle 5, NegHel

Entries: 1762	Entries: 4610	Entries: 606
Mean: 7.8092 +/- 0.0064	Mean: 11.3358 +/- 0.0070	Mean: 7.3339 +/- 0.0118
Std Dev: 0.2678 +/- 0.0045	Std Dev: 0.4726 +/- 0.0049	Std Dev: 0.2905 +/- 0.0083



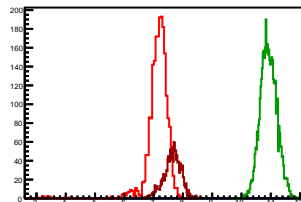
Cycle 6, NegHel

Entries: 602	Entries: 4608	Entries: 1477
Mean: 7.6208 +/- 0.0079	Mean: 11.3919 +/- 0.0047	Mean: 7.5684 +/- 0.0061
Std Dev: 0.1945 +/- 0.0056	Std Dev: 0.3201 +/- 0.0033	Std Dev: 0.2349 +/- 0.0043



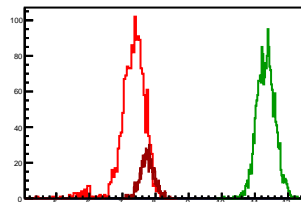
Cycle 7, NegHel

Entries: 2113	Entries: 4675	Entries: 1621
Mean: 7.1485 +/- 0.0067	Mean: 10.9259 +/- 0.0041	Mean: 7.6385 +/- 0.0072
Std Dev: 0.3999 +/- 0.0062	Std Dev: 0.2824 +/- 0.0029	Std Dev: 0.2893 +/- 0.0051



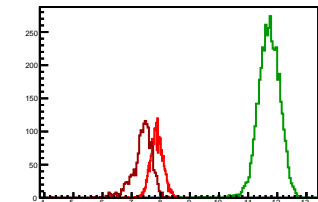
Cycle 8, NegHel

Entries: 1599	Entries: 2135	Entries: 782
Mean: 7.3047 +/- 0.0105	Mean: 11.3357 +/- 0.0059	Mean: 7.7556 +/- 0.0076
Std Dev: 0.4210 +/- 0.0074	Std Dev: 0.2721 +/- 0.0042	Std Dev: 0.2134 +/- 0.0054



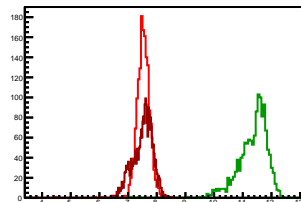
Cycle 9, NegHel

Entries: 2595	Entries: 4559	Entries: 1601
Mean: 7.8675 +/- 0.0043	Mean: 11.7156 +/- 0.0056	Mean: 7.3658 +/- 0.0088
Std Dev: 0.2197 +/- 0.0030	Std Dev: 0.3757 +/- 0.0039	Std Dev: 0.3501 +/- 0.0062



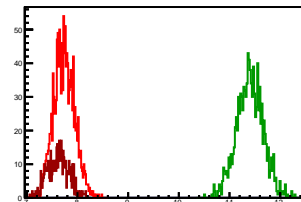
Cycle 10, NegHel

Entries: 1600	Entries: 1372	Entries: 2559
Mean: 7.5273 +/- 0.0063	Mean: 11.3532 +/- 0.0140	Mean: 7.5108 +/- 0.0068
Std Dev: 0.2512 +/- 0.0044	Std Dev: 0.5195 +/- 0.0099	Std Dev: 0.3454 +/- 0.0048



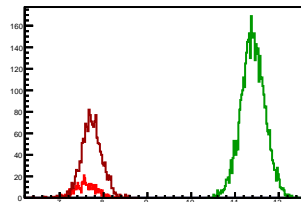
Cycle 11, NegHel

Entries: 1425	Entries: 1107	Entries: 506
Mean: 7.7361 +/- 0.0054	Mean: 11.4036 +/- 0.0079	Mean: 7.6196 +/- 0.0092
Std Dev: 0.2054 +/- 0.0038	Std Dev: 0.2628 +/- 0.0056	Std Dev: 0.2062 +/- 0.0065



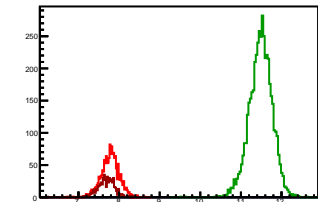
Cycle 12, NegHel

Entries: 495	Entries: 4577	Entries: 1573
Mean: 7.5912 +/- 0.0106	Mean: 11.4093 +/- 0.0041	Mean: 7.7279 +/- 0.0060
Std Dev: 0.2354 +/- 0.0075	Std Dev: 0.2758 +/- 0.0029	Std Dev: 0.2361 +/- 0.0042



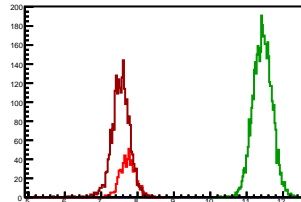
Cycle 13, NegHel

Entries: 1573	Entries: 4660	Entries: 570
Mean: 7.7787 +/- 0.0057	Mean: 11.4868 +/- 0.0041	Mean: 7.6832 +/- 0.0090
Std Dev: 0.2250 +/- 0.0040	Std Dev: 0.2821 +/- 0.0029	Std Dev: 0.2156 +/- 0.0064



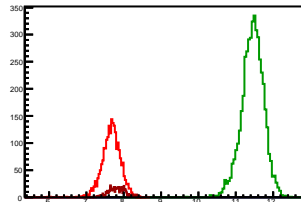
Cycle 14, NegHel

Entries: 573	Entries: 4617	Entries: 2289
Mean: 7.7289 +/- 0.0099	Mean: 11.4343 +/- 0.0038	Mean: 7.5340 +/- 0.0053
Std Dev: 0.2366 +/- 0.0070	Std Dev: 0.2616 +/- 0.0027	Std Dev: 0.2546 +/- 0.0038



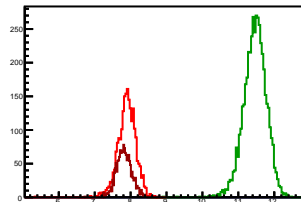
Cycle 15, NegHel

Entries: 2230	Entries: 4611	Entries: 575
Mean: 7.6668 +/- 0.0054	Mean: 11.4489 +/- 0.0044	Mean: 7.8136 +/- 0.0094
Std Dev: 0.2540 +/- 0.0038	Std Dev: 0.2982 +/- 0.0031	Std Dev: 0.2266 +/- 0.0067



Cycle 16, NegHel

Entries: 2189	Entries: 4636	Entries: 1564
Mean: 7.8932 +/- 0.0054	Mean: 11.4621 +/- 0.0047	Mean: 7.8178 +/- 0.0054
Std Dev: 0.2526 +/- 0.0038	Std Dev: 0.3172 +/- 0.0033	Std Dev: 0.2123 +/- 0.0038

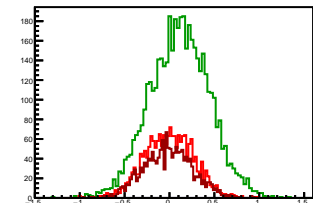


Cycle 1, Diffs

Entries: 1950 Entries: 4692 Entries: 1561

Mean: -0.0058 +/- 0.0062 Mean: 0.1106 +/- 0.0048 Mean: -0.0131 +/- 0.0069

Std Dev: 0.2720 +/- 0.0044 Std Dev: 0.3321 +/- 0.0034 Std Dev: 0.2719 +/- 0.0049

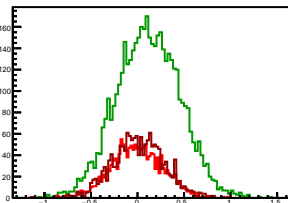


Cycle 2, Diffs

Entries: 1556 Entries: 4634 Entries: 1564

Mean: -0.0037 +/- 0.0069 Mean: 0.1150 +/- 0.0050 Mean: 0.0070 +/- 0.0070

Std Dev: 0.2735 +/- 0.0049 Std Dev: 0.3395 +/- 0.0035 Std Dev: 0.2750 +/- 0.0049

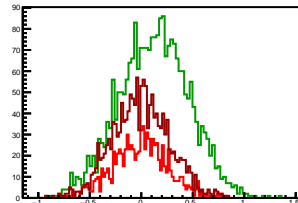


Cycle 3, Diffs

Entries: 910 Entries: 2497 Entries: 1550

Mean: -0.0056 +/- 0.0068 Mean: 0.1220 +/- 0.0068 Mean: -0.0057 +/- 0.0070

Std Dev: 0.2661 +/- 0.0062 Std Dev: 0.3386 +/- 0.0048 Std Dev: 0.2752 +/- 0.0049

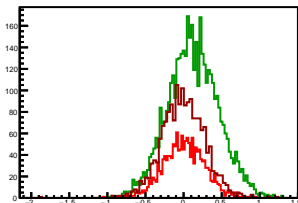


Cycle 4, Diffs

Entries: 1558 Entries: 4371 Entries: 1781

Mean: 0.0044 +/- 0.0069 Mean: 0.1207 +/- 0.0051 Mean: -0.0038 +/- 0.0067

Std Dev: 0.2739 +/- 0.0049 Std Dev: 0.3345 +/- 0.0036 Std Dev: 0.2828 +/- 0.0047

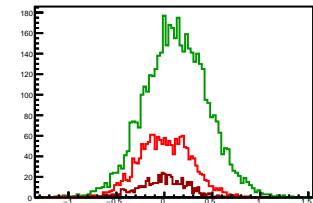


Cycle 5, Diffs

Entries: 1762 Entries: 4610 Entries: 606

Mean: 0.0066 +/- 0.0065 Mean: 0.1225 +/- 0.0049 Mean: -0.0169 +/- 0.0102

Std Dev: 0.2732 +/- 0.0046 Std Dev: 0.3296 +/- 0.0034 Std Dev: 0.2519 +/- 0.0072

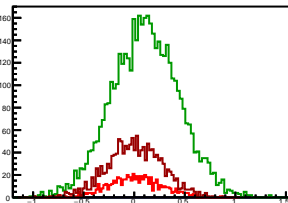


Cycle 6, Diffs

Entries: 602 Entries: 4608 Entries: 1477

Mean: 0.0066 +/- 0.0105 Mean: 0.1086 +/- 0.0049 Mean: 0.0040 +/- 0.0070

Std Dev: 0.2579 +/- 0.0074 Std Dev: 0.3324 +/- 0.0035 Std Dev: 0.2697 +/- 0.0050

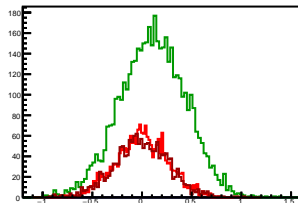


Cycle 7, Diffs

Entries: 2113 Entries: 4675 Entries: 1621

Mean: -0.0011 +/- 0.0057 Mean: 0.1074 +/- 0.0048 Mean: -0.0080 +/- 0.0069

Std Dev: 0.2612 +/- 0.0040 Std Dev: 0.3290 +/- 0.0034 Std Dev: 0.2759 +/- 0.0048

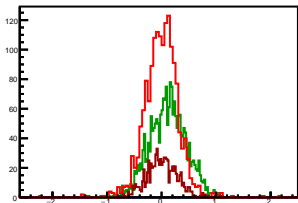


Cycle 8, Diffs

Entries: 1599 Entries: 2135 Entries: 782

Mean: -0.0012 +/- 0.0078 Mean: 0.1119 +/- 0.0072 Mean: 0.0053 +/- 0.0098

Std Dev: 0.3115 +/- 0.0055 Std Dev: 0.3349 +/- 0.0051 Std Dev: 0.2754 +/- 0.0070

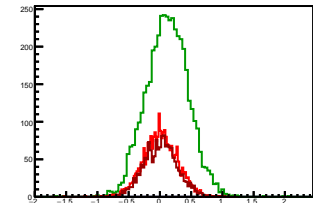


Cycle 9, Diffs

Entries: 2595 Entries: 4559 Entries: 1601

Mean: 0.0066 +/- 0.0053 Mean: 0.1182 +/- 0.0050 Mean: 0.0124 +/- 0.0068

Std Dev: 0.2704 +/- 0.0038 Std Dev: 0.3363 +/- 0.0035 Std Dev: 0.2737 +/- 0.0048

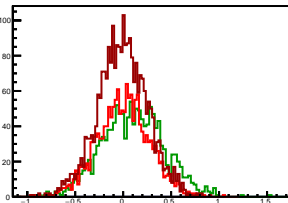


Cycle 10, Diffs

Entries: 1600 Entries: 1372 Entries: 2559

Mean: 0.0022 +/- 0.0067 Mean: 0.1048 +/- 0.0087 Mean: -0.0069 +/- 0.0052

Std Dev: 0.2699 +/- 0.0048 Std Dev: 0.3239 +/- 0.0062 Std Dev: 0.2610 +/- 0.0036

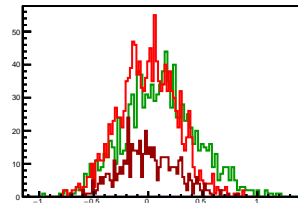


Cycle 11, Diffs

Entries: 1425 Entries: 1107 Entries: 506

Mean: -0.0041 +/- 0.0071 Mean: 0.1095 +/- 0.0102 Mean: -0.0055 +/- 0.0114

Std Dev: 0.2670 +/- 0.0050 Std Dev: 0.3383 +/- 0.0072 Std Dev: 0.2561 +/- 0.0081

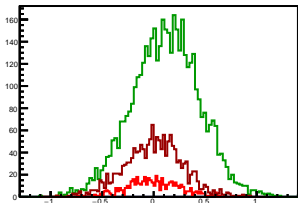


Cycle 12, Diffs

Entries: 495 Entries: 4577 Entries: 1573

Mean: -0.0056 +/- 0.0114 Mean: 0.1166 +/- 0.0049 Mean: 0.0013 +/- 0.0070

Std Dev: 0.2528 +/- 0.0080 Std Dev: 0.3283 +/- 0.0034 Std Dev: 0.2788 +/- 0.0050

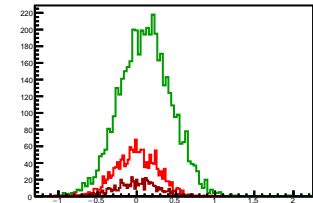


Cycle 13, Diffs

Entries: 1573 Entries: 4660 Entries: 570

Mean: -0.0021 +/- 0.0067 Mean: 0.1081 +/- 0.0048 Mean: -0.0052 +/- 0.0112

Std Dev: 0.2655 +/- 0.0047 Std Dev: 0.3285 +/- 0.0034 Std Dev: 0.2668 +/- 0.0079

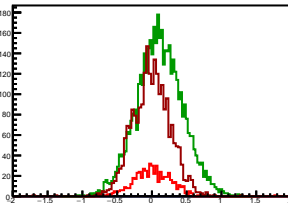


Cycle 14, Diffs

Entries: 573 Entries: 4617 Entries: 2289

Mean: 0.0070 +/- 0.0115 Mean: 0.1112 +/- 0.0049 Mean: -0.0066 +/- 0.0056

Std Dev: 0.2743 +/- 0.0081 Std Dev: 0.3308 +/- 0.0034 Std Dev: 0.2695 +/- 0.0040

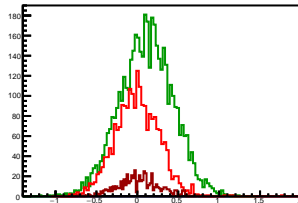


Cycle 15, Diffs

Entries: 2230 Entries: 4611 Entries: 575

Mean: -0.0030 +/- 0.0057 Mean: 0.1094 +/- 0.0048 Mean: 0.0148 +/- 0.0108

Std Dev: 0.2701 +/- 0.0040 Std Dev: 0.3264 +/- 0.0034 Std Dev: 0.2579 +/- 0.0076

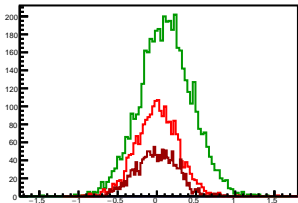


Cycle 16, Diffs

Entries: 2189 Entries: 4636 Entries: 1564

Mean: 0.0020 +/- 0.0057 Mean: 0.1133 +/- 0.0049 Mean: -0.0043 +/- 0.0066

Std Dev: 0.2683 +/- 0.0041 Std Dev: 0.3362 +/- 0.0035 Std Dev: 0.2622 +/- 0.0047

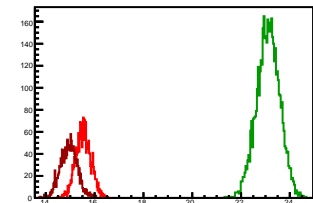


Cycle 1, Sums

Entries: 1950 Entries: 4692 Entries: 1561

Mean: 15.5326 +/- 0.0071 Mean: 23.1095 +/- 0.0069 Mean: 14.9447 +/- 0.0088

Std Dev: 0.3144 +/- 0.0050 Std Dev: 0.4697 +/- 0.0048 Std Dev: 0.3476 +/- 0.0062

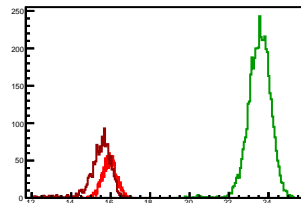


Cycle 2, Sums

Entries: 1556 Entries: 4634 Entries: 1564

Mean: 15.9351 +/- 0.0093 Mean: 23.5407 +/- 0.0084 Mean: 15.4619 +/- 0.0158

Std Dev: 0.3660 +/- 0.0066 Std Dev: 0.5715 +/- 0.0059 Std Dev: 0.6262 +/- 0.0112

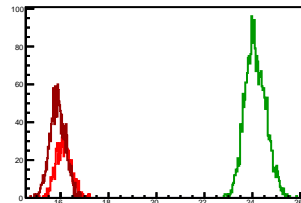


Cycle 3, Sums

Entries: 910 Entries: 2497 Entries: 1550

Mean: 16.1181 +/- 0.0104 Mean: 24.1283 +/- 0.0088 Mean: 15.8806 +/- 0.0083

Std Dev: 0.3136 +/- 0.0074 Std Dev: 0.4384 +/- 0.0062 Std Dev: 0.3270 +/- 0.0059

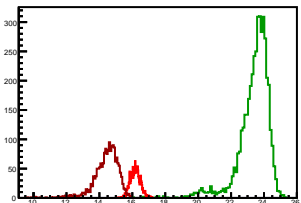


Cycle 4, Sums

Entries: 1558 Entries: 4371 Entries: 1781

Mean: 16.1826 +/- 0.0077 Mean: 23.3744 +/- 0.0149 Mean: 14.4086 +/- 0.0182

Std Dev: 0.3046 +/- 0.0055 Std Dev: 0.9834 +/- 0.0105 Std Dev: 0.7692 +/- 0.0129

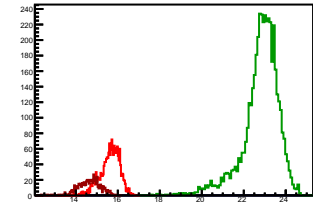


Cycle 5, Sums

Entries: 1762 Entries: 4610 Entries: 606

Mean: 15.6249 +/- 0.0111 Mean: 22.7940 +/- 0.0131 Mean: 14.6509 +/- 0.0210

Std Dev: 0.4641 +/- 0.0078 Std Dev: 0.8894 +/- 0.0093 Std Dev: 0.5180 +/- 0.0149

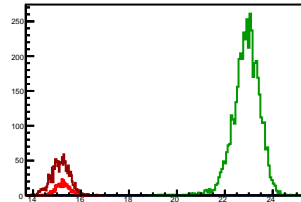


Cycle 6, Sums

Entries: 602 Entries: 4608 Entries: 1477

Mean: 15.2501 +/- 0.0121 Mean: 22.8924 +/- 0.0082 Mean: 15.1409 +/- 0.0099

Std Dev: 0.2974 +/- 0.0086 Std Dev: 0.5553 +/- 0.0058 Std Dev: 0.3818 +/- 0.0070

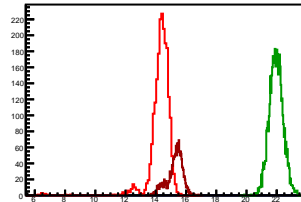


Cycle 7, Sums

Entries: 2113 Entries: 4675 Entries: 1621

Mean: 14.2959 +/- 0.0165 Mean: 21.9593 +/- 0.0067 Mean: 15.2689 +/- 0.0126

Std Dev: 0.7591 +/- 0.0117 Std Dev: 0.4558 +/- 0.0047 Std Dev: 0.5078 +/- 0.0089

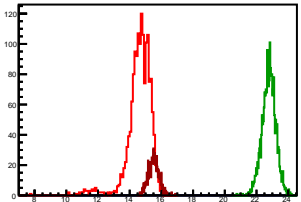


Cycle 8, Sums

Entries: 1599 Entries: 2135 Entries: 782

Mean: 14.6081 +/- 0.0199 Mean: 22.7834 +/- 0.0094 Mean: 15.5166 +/- 0.0120

Std Dev: 0.7970 +/- 0.0141 Std Dev: 0.4350 +/- 0.0067 Std Dev: 0.3358 +/- 0.0085

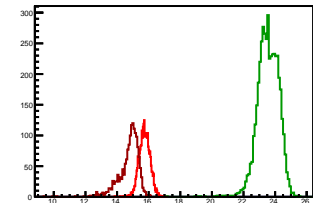


Cycle 9, Sums

Entries: 2595 Entries: 4559 Entries: 1601

Mean: 15.7415 +/- 0.0068 Mean: 23.5494 +/- 0.0099 Mean: 14.7440 +/- 0.0164

Std Dev: 0.3444 +/- 0.0048 Std Dev: 0.6678 +/- 0.0070 Std Dev: 0.6548 +/- 0.0116

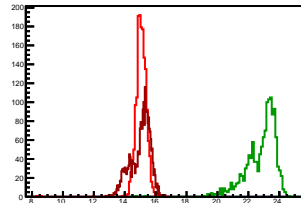


Cycle 10, Sums

Entries: 1600 Entries: 1372 Entries: 2559

Mean: 15.0569 +/- 0.0103 Mean: 22.8113 +/- 0.0267 Mean: 15.0148 +/- 0.0126

Std Dev: 0.4138 +/- 0.0073 Std Dev: 0.9894 +/- 0.0189 Std Dev: 0.6389 +/- 0.0089

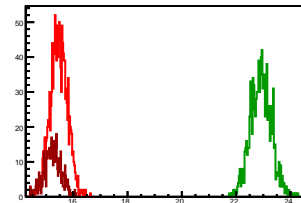


Cycle 11, Sums

Entries: 1425 Entries: 1107 Entries: 506

Mean: 15.4682 +/- 0.0084 Mean: 22.9167 +/- 0.0116 Mean: 15.2338 +/- 0.0140

Std Dev: 0.3184 +/- 0.0060 Std Dev: 0.3874 +/- 0.0082 Std Dev: 0.3141 +/- 0.0099

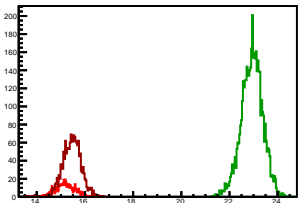


Cycle 12, Sums

Entries: 495 Entries: 4577 Entries: 1573

Mean: 15.1769 +/- 0.0179 Mean: 22.9352 +/- 0.0066 Mean: 15.4571 +/- 0.0097

Std Dev: 0.3988 +/- 0.0127 Std Dev: 0.4458 +/- 0.0047 Std Dev: 0.3844 +/- 0.0069

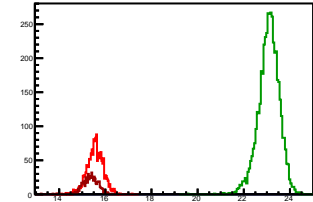


Cycle 13, Sums

Entries: 1573 Entries: 4660 Entries: 570

Mean: 15.5552 +/- 0.0091 Mean: 23.0818 +/- 0.0066 Mean: 15.3612 +/- 0.0142

Std Dev: 0.3608 +/- 0.0064 Std Dev: 0.4534 +/- 0.0047 Std Dev: 0.3393 +/- 0.0100

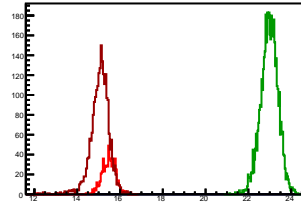


Cycle 14, Sums

Entries: 573 Entries: 4617 Entries: 2289

Mean: 15.4647 +/- 0.0144 Mean: 22.9798 +/- 0.0060 Mean: 15.0615 +/- 0.0092

Std Dev: 0.3436 +/- 0.0101 Std Dev: 0.4083 +/- 0.0042 Std Dev: 0.4418 +/- 0.0065

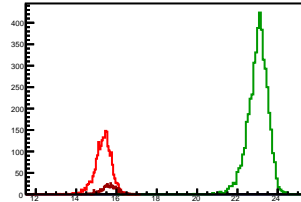


Cycle 15, Sums

Entries: 2230 Entries: 4611 Entries: 575

Mean: 15.3307 +/- 0.0088 Mean: 23.0072 +/- 0.0074 Mean: 15.6420 +/- 0.0157

Std Dev: 0.4178 +/- 0.0063 Std Dev: 0.5050 +/- 0.0053 Std Dev: 0.3756 +/- 0.0111

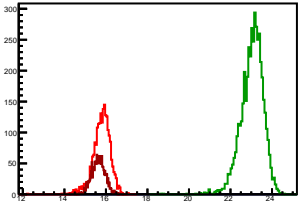


Cycle 16, Sums

Entries: 2189 Entries: 4636 Entries: 1564

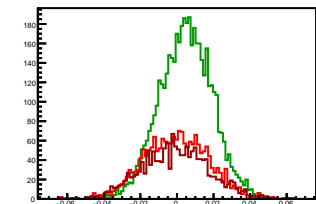
Mean: 15.7884 +/- 0.0090 Mean: 23.0374 +/- 0.0079 Mean: 15.6312 +/- 0.0084

Std Dev: 0.4194 +/- 0.0063 Std Dev: 0.5393 +/- 0.0056 Std Dev: 0.3333 +/- 0.0060



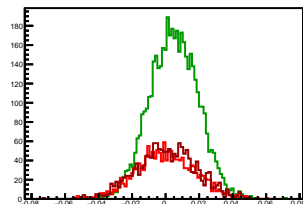
Cycle 1, Asyms

Entries: 1950	Entries: 4692	Entries: 1561
Mean: -0.0004 +/- 0.0004	Mean: 0.0048 +/- 0.0002	Mean: -0.0009 +/- 0.0005
Std Dev: 0.0175 +/- 0.0003	Std Dev: 0.0144 +/- 0.0001	Std Dev: 0.0182 +/- 0.0003



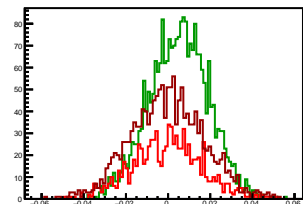
Cycle 2, Asyms

Entries: 1556	Entries: 4634	Entries: 1564
Mean: -0.0002 +/- 0.0004	Mean: 0.0049 +/- 0.0002	Mean: 0.0005 +/- 0.0004
Std Dev: 0.0172 +/- 0.0003	Std Dev: 0.0144 +/- 0.0001	Std Dev: 0.0178 +/- 0.0003



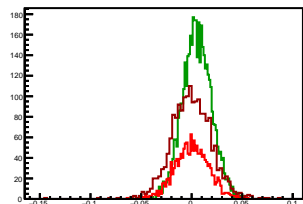
Cycle 3, Asyms

Entries: 910	Entries: 2497	Entries: 1550
Mean: -0.0003 +/- 0.0005	Mean: 0.0050 +/- 0.0003	Mean: -0.0004 +/- 0.0004
Std Dev: 0.0165 +/- 0.0004	Std Dev: 0.0140 +/- 0.0002	Std Dev: 0.0173 +/- 0.0003



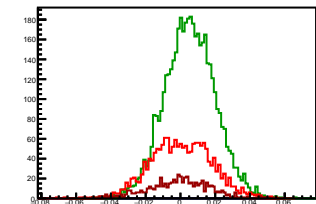
Cycle 4, Asyms

Entries: 1558	Entries: 4371	Entries: 1781
Mean: 0.0003 +/- 0.0004	Mean: 0.0052 +/- 0.0002	Mean: -0.0003 +/- 0.0005
Std Dev: 0.0169 +/- 0.0003	Std Dev: 0.0143 +/- 0.0002	Std Dev: 0.0199 +/- 0.0003



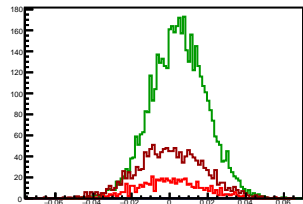
Cycle 5, Asyms

Entries: 1762	Entries: 4610	Entries: 606
Mean: 0.0004 +/- 0.0004	Mean: 0.0054 +/- 0.0002	Mean: -0.0011 +/- 0.0007
Std Dev: 0.0175 +/- 0.0003	Std Dev: 0.0145 +/- 0.0002	Std Dev: 0.0172 +/- 0.0005



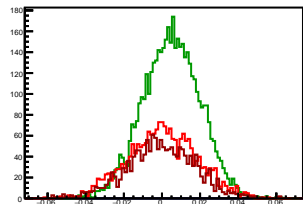
Cycle 6, Asyms

Entries: 602	Entries: 4608	Entries: 1477
Mean: 0.0006 +/- 0.0007	Mean: 0.0047 +/- 0.0002	Mean: 0.0003 +/- 0.0005
Std Dev: 0.0169 +/- 0.0005	Std Dev: 0.0145 +/- 0.0002	Std Dev: 0.0178 +/- 0.0003



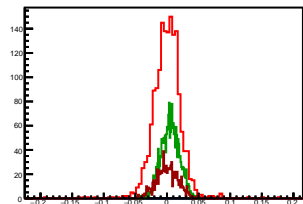
Cycle 7, Asyms

Entries: 2113	Entries: 4675	Entries: 1621
Mean: -0.0001 +/- 0.0004	Mean: 0.0049 +/- 0.0002	Mean: -0.0005 +/- 0.0004
Std Dev: 0.0183 +/- 0.0003	Std Dev: 0.0150 +/- 0.0002	Std Dev: 0.0180 +/- 0.0003



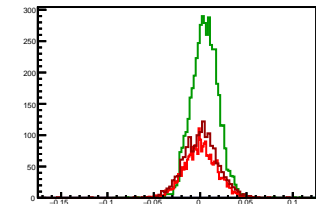
Cycle 8, Asyms

Entries: 1599	Entries: 2135	Entries: 782
Mean: -0.0002 +/- 0.0006	Mean: 0.0049 +/- 0.0003	Mean: 0.0003 +/- 0.0006
Std Dev: 0.0227 +/- 0.0004	Std Dev: 0.0147 +/- 0.0002	Std Dev: 0.0177 +/- 0.0004



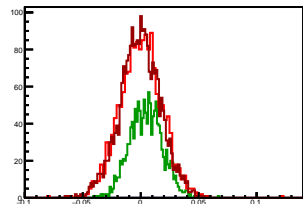
Cycle 9, Asyms

Entries: 2595	Entries: 4559	Entries: 1601
Mean: 0.0004 +/- 0.0003	Mean: 0.0050 +/- 0.0002	Mean: 0.0008 +/- 0.0005
Std Dev: 0.0172 +/- 0.0002	Std Dev: 0.0144 +/- 0.0002	Std Dev: 0.0190 +/- 0.0003



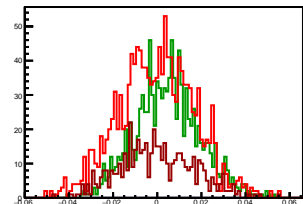
Cycle 10, Asyms

Entries: 1600	Entries: 1372	Entries: 2559
Mean: 0.0002 +/- 0.0005	Mean: 0.0046 +/- 0.0004	Mean: -0.0005 +/- 0.0003
Std Dev: 0.0182 +/- 0.0003	Std Dev: 0.0142 +/- 0.0003	Std Dev: 0.0174 +/- 0.0002



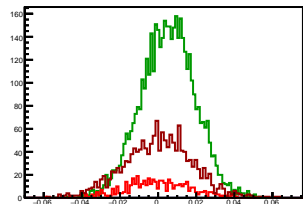
Cycle 11, Asyms

Entries: 1425	Entries: 1107	Entries: 506
Mean: -0.0003 +/- 0.0005	Mean: 0.0048 +/- 0.0004	Mean: -0.0003 +/- 0.0007
Std Dev: 0.0172 +/- 0.0003	Std Dev: 0.0148 +/- 0.0003	Std Dev: 0.0168 +/- 0.0005



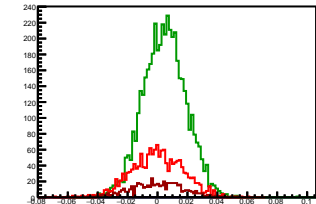
Cycle 12, Asyms

Entries: 495	Entries: 4577	Entries: 1573
Mean: -0.0004 +/- 0.0007	Mean: 0.0051 +/- 0.0002	Mean: 0.0001 +/- 0.0005
Std Dev: 0.0166 +/- 0.0005	Std Dev: 0.0143 +/- 0.0001	Std Dev: 0.0180 +/- 0.0003



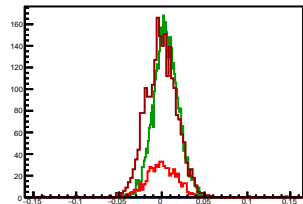
Cycle 13, Asyms

Entries: 1573	Entries: 4660	Entries: 570
Mean: -0.0001 +/- 0.0004	Mean: 0.0047 +/- 0.0002	Mean: -0.0003 +/- 0.0007
Std Dev: 0.0171 +/- 0.0003	Std Dev: 0.0143 +/- 0.0001	Std Dev: 0.0174 +/- 0.0005



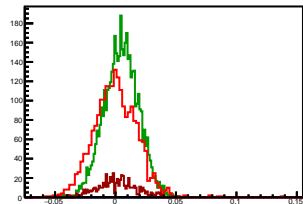
Cycle 14, Asyms

Entries: 573	Entries: 4617	Entries: 2289
Mean: 0.0005 +/- 0.0008	Mean: 0.0048 +/- 0.0002	Mean: -0.0005 +/- 0.0004
Std Dev: 0.0181 +/- 0.0005	Std Dev: 0.0144 +/- 0.0001	Std Dev: 0.0180 +/- 0.0003



Cycle 15, Asyms

Entries: 2230	Entries: 4611	Entries: 575
Mean: -0.0002 +/- 0.0004	Mean: 0.0048 +/- 0.0002	Mean: 0.0009 +/- 0.0007
Std Dev: 0.0177 +/- 0.0003	Std Dev: 0.0142 +/- 0.0001	Std Dev: 0.0165 +/- 0.0005



Cycle 16, Asyms

Entries: 2189	Entries: 4636	Entries: 1564
Mean: 0.0001 +/- 0.0004	Mean: 0.0049 +/- 0.0002	Mean: -0.0003 +/- 0.0004
Std Dev: 0.0171 +/- 0.0003	Std Dev: 0.0146 +/- 0.0002	Std Dev: 0.0168 +/- 0.0003

