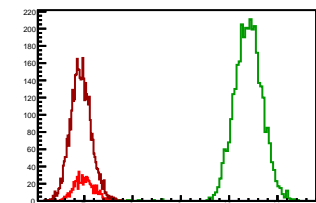


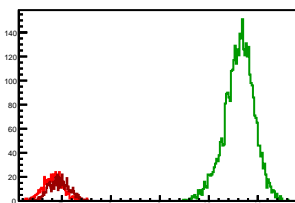
### Cycle 1, PosHel

Entries: 763	Entries: 3341	Entries: 4196
Mean: 6.9963 +/- 0.0073	Mean: 10.3968 +/- 0.0052	Mean: 6.9299 +/- 0.0033
Std Dev: 0.2021 +/- 0.0052	Std Dev: 0.3001 +/- 0.0037	Std Dev: 0.2164 +/- 0.0024



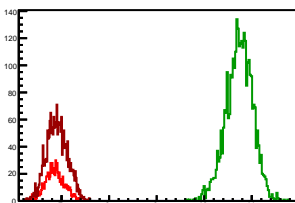
### Cycle 2, PosHel

Entries: 672	Entries: 3812	Entries: 649
Mean: 6.8273 +/- 0.0081	Mean: 10.6212 +/- 0.0049	Mean: 6.9439 +/- 0.0081
Std Dev: 0.2090 +/- 0.0057	Std Dev: 0.3024 +/- 0.0035	Std Dev: 0.2959 +/- 0.0057



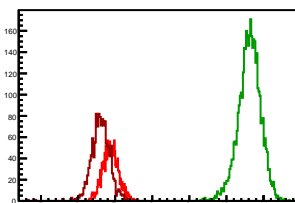
### Cycle 3, PosHel

Entries: 765	Entries: 3212	Entries: 2039
Mean: 6.8602 +/- 0.0073	Mean: 10.7372 +/- 0.0049	Mean: 6.9031 +/- 0.0049
Std Dev: 0.2015 +/- 0.0052	Std Dev: 0.2800 +/- 0.0035	Std Dev: 0.2191 +/- 0.0034



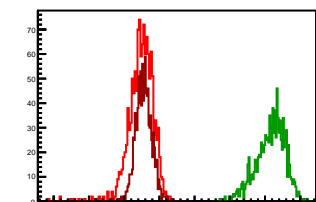
### Cycle 4, PosHel

Entries: 1742	Entries: 3989	Entries: 1350
Mean: 6.8760 +/- 0.0051	Mean: 10.6186 +/- 0.0048	Mean: 6.6069 +/- 0.0068
Std Dev: 0.2138 +/- 0.0036	Std Dev: 0.3030 +/- 0.0034	Std Dev: 0.2511 +/- 0.0048



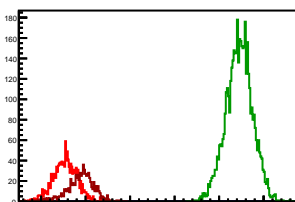
### Cycle 5, PosHel

Entries: 1287	Entries: 1069	Entries: 1053
Mean: 6.4740 +/- 0.0101	Mean: 10.1592 +/- 0.0124	Mean: 6.5554 +/- 0.0071
Std Dev: 0.3629 +/- 0.0072	Std Dev: 0.4053 +/- 0.0088	Std Dev: 0.2293 +/- 0.0050



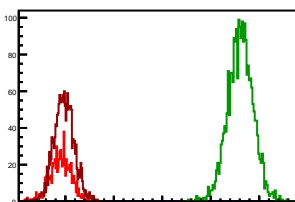
### Cycle 6, PosHel

Entries: 1330	Entries: 4595	Entries: 763
Mean: 6.5360 +/- 0.0073	Mean: 10.4515 +/- 0.0044	Mean: 6.8860 +/- 0.0107
Std Dev: 0.2649 +/- 0.0051	Std Dev: 0.2970 +/- 0.0031	Std Dev: 0.2958 +/- 0.0076



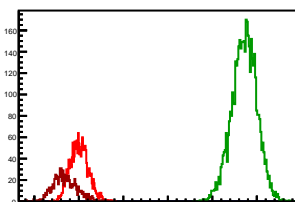
### Cycle 7, PosHel

Entries: 760	Entries: 2427	Entries: 1791
Mean: 6.9077 +/- 0.0077	Mean: 10.6134 +/- 0.0053	Mean: 6.9749 +/- 0.0048
Std Dev: 0.2124 +/- 0.0054	Std Dev: 0.2629 +/- 0.0038	Std Dev: 0.2037 +/- 0.0034



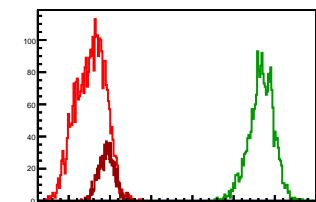
### Cycle 8, PosHel

Entries: 1815	Entries: 4650	Entries: 751
Mean: 7.0089 +/- 0.0047	Mean: 10.7182 +/- 0.0041	Mean: 6.6877 +/- 0.0096
Std Dev: 0.2018 +/- 0.0033	Std Dev: 0.2808 +/- 0.0029	Std Dev: 0.2633 +/- 0.0068



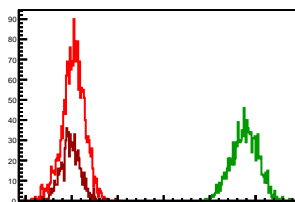
### Cycle 9, PosHel

Entries: 3448	Entries: 2221	Entries: 998
Mean: 6.5318 +/- 0.0061	Mean: 10.6707 +/- 0.0064	Mean: 6.9227 +/- 0.0063
Std Dev: 0.3591 +/- 0.0043	Std Dev: 0.3028 +/- 0.0045	Std Dev: 0.1976 +/- 0.0044



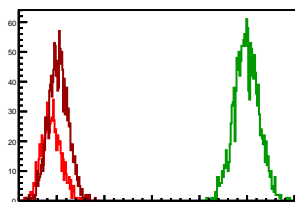
### Cycle 10, PosHel

Entries: 2124	Entries: 1221	Entries: 787
Mean: 7.0357 +/- 0.0055	Mean: 10.7669 +/- 0.0083	Mean: 6.9805 +/- 0.0076
Std Dev: 0.2524 +/- 0.0039	Std Dev: 0.2917 +/- 0.0059	Std Dev: 0.2126 +/- 0.0054



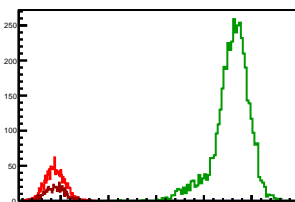
### Cycle 11, PosHel

Entries: 969	Entries: 1669	Entries: 1451
Mean: 6.8929 +/- 0.0069	Mean: 10.9888 +/- 0.0063	Mean: 7.0303 +/- 0.0055
Std Dev: 0.2044 +/- 0.0049	Std Dev: 0.2586 +/- 0.0045	Std Dev: 0.2093 +/- 0.0039



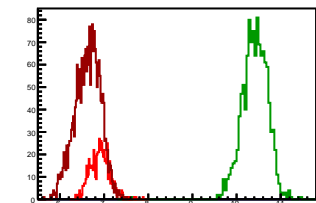
### Cycle 12, PosHel

Entries: 1467	Entries: 4632	Entries: 670
Mean: 6.8803 +/- 0.0054	Mean: 10.5874 +/- 0.0055	Mean: 6.8810 +/- 0.0080
Std Dev: 0.2064 +/- 0.0038	Std Dev: 0.3725 +/- 0.0039	Std Dev: 0.2072 +/- 0.0057



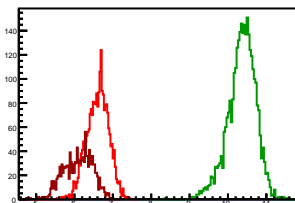
### Cycle 13, PosHel

Entries: 652	Entries: 1196	Entries: 2365
Mean: 6.9050 +/- 0.0067	Mean: 10.4137 +/- 0.0084	Mean: 6.6298 +/- 0.0060
Std Dev: 0.2210 +/- 0.0061	Std Dev: 0.2919 +/- 0.0060	Std Dev: 0.2902 +/- 0.0042



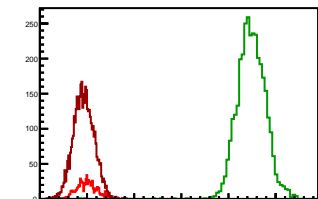
### Cycle 14, PosHel

Entries: 2357	Entries: 3212	Entries: 1372
Mean: 6.6061 +/- 0.0059	Mean: 10.3614 +/- 0.0064	Mean: 6.0980 +/- 0.0100
Std Dev: 0.2852 +/- 0.0042	Std Dev: 0.3634 +/- 0.0045	Std Dev: 0.3887 +/- 0.0070



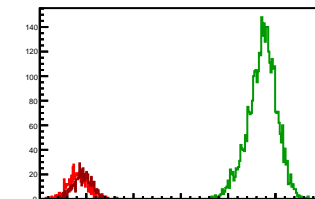
## Cycle 1, NegHel

Entries: 763	Entries: 3341	Entries: 4196
Mean: 6.9965 +/- 0.0077	Mean: 10.4839 +/- 0.0054	Mean: 6.9294 +/- 0.0034
Std Dev: 0.2137 +/- 0.0055	Std Dev: 0.3093 +/- 0.0038	Std Dev: 0.2189 +/- 0.0024



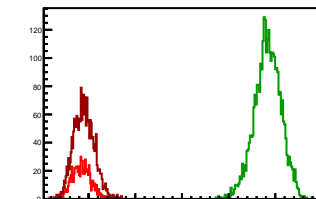
## Cycle 2, NegHel

Entries: 672	Entries: 3812	Entries: 649
Mean: 6.8203 +/- 0.0082	Mean: 10.7218 +/- 0.0049	Mean: 6.9265 +/- 0.0073
Std Dev: 0.2118 +/- 0.0058	Std Dev: 0.3036 +/- 0.0035	Std Dev: 0.1859 +/- 0.0052



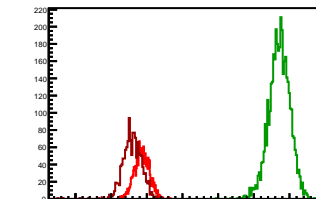
## Cycle 3, NegHel

Entries: 765	Entries: 3212	Entries: 2039
Mean: 6.8487 +/- 0.0075	Mean: 10.8351 +/- 0.0050	Mean: 6.8984 +/- 0.0049
Std Dev: 0.2074 +/- 0.0053	Std Dev: 0.2837 +/- 0.0035	Std Dev: 0.2196 +/- 0.0034



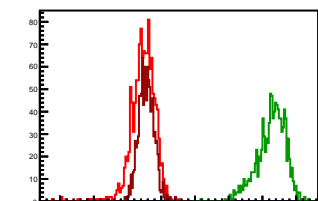
## Cycle 4, NegHel

Entries: 1742	Entries: 3989	Entries: 1350
Mean: 6.8609 +/- 0.0051	Mean: 10.7154 +/- 0.0047	Mean: 6.5892 +/- 0.0072
Std Dev: 0.2115 +/- 0.0036	Std Dev: 0.2959 +/- 0.0033	Std Dev: 0.2864 +/- 0.0051



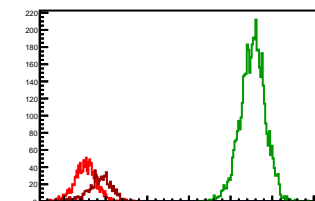
## Cycle 5, NegHel

Entries: 1287	Entries: 1069	Entries: 1053
Mean: 6.4553 +/- 0.0102	Mean: 10.2617 +/- 0.0128	Mean: 6.5540 +/- 0.0072
Std Dev: 0.3669 +/- 0.0072	Std Dev: 0.4201 +/- 0.0091	Std Dev: 0.2342 +/- 0.0051



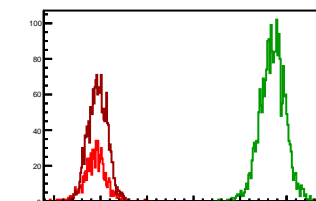
## Cycle 6, NegHel

Entries: 1330	Entries: 4595	Entries: 763
Mean: 6.5100 +/- 0.0071	Mean: 10.5330 +/- 0.0044	Mean: 6.8507 +/- 0.0107
Std Dev: 0.2586 +/- 0.0050	Std Dev: 0.2981 +/- 0.0031	Std Dev: 0.2960 +/- 0.0076



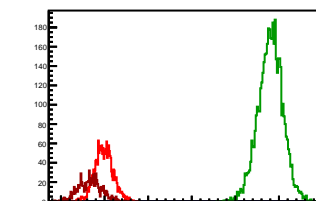
## Cycle 7, NegHel

Entries: 760	Entries: 2427	Entries: 1791
Mean: 6.8794 +/- 0.0062	Mean: 10.6991 +/- 0.0054	Mean: 6.9404 +/- 0.0049
Std Dev: 0.2251 +/- 0.0058	Std Dev: 0.2684 +/- 0.0039	Std Dev: 0.2080 +/- 0.0035



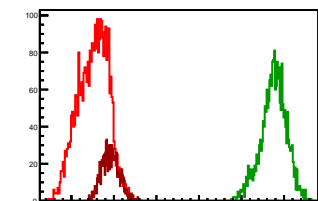
## Cycle 8, NegHel

Entries: 1815	Entries: 4650	Entries: 751
Mean: 6.9869 +/- 0.0048	Mean: 10.8048 +/- 0.0041	Mean: 6.6641 +/- 0.0096
Std Dev: 0.2064 +/- 0.0034	Std Dev: 0.2813 +/- 0.0029	Std Dev: 0.2633 +/- 0.0068



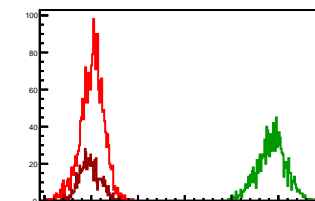
## Cycle 9, NegHel

Entries: 3448	Entries: 2221	Entries: 998
Mean: 6.5144 +/- 0.0060	Mean: 10.7548 +/- 0.0064	Mean: 6.9187 +/- 0.0064
Std Dev: 0.3508 +/- 0.0042	Std Dev: 0.3001 +/- 0.0045	Std Dev: 0.2026 +/- 0.0045



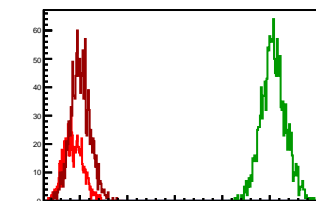
## Cycle 10, NegHel

Entries: 2124	Entries: 1221	Entries: 787
Mean: 7.0192 +/- 0.0055	Mean: 10.8581 +/- 0.0087	Mean: 6.9667 +/- 0.0077
Std Dev: 0.2517 +/- 0.0039	Std Dev: 0.3055 +/- 0.0062	Std Dev: 0.2174 +/- 0.0055



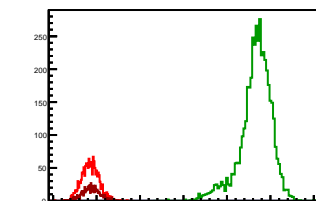
## Cycle 11, NegHel

Entries: 969	Entries: 1669	Entries: 1451
Mean: 6.8621 +/- 0.0068	Mean: 11.0794 +/- 0.0062	Mean: 7.0073 +/- 0.0054
Std Dev: 0.1999 +/- 0.0048	Std Dev: 0.2549 +/- 0.0044	Std Dev: 0.2055 +/- 0.0038



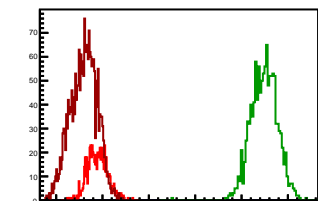
## Cycle 12, NegHel

Entries: 1467	Entries: 4632	Entries: 670
Mean: 6.8551 +/- 0.0052	Mean: 10.6606 +/- 0.0054	Mean: 6.8703 +/- 0.0077
Std Dev: 0.2000 +/- 0.0037	Std Dev: 0.3682 +/- 0.0038	Std Dev: 0.1998 +/- 0.0055



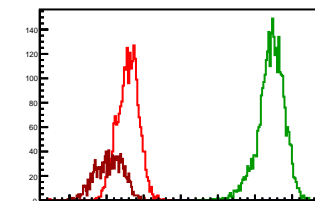
## Cycle 13, NegHel

Entries: 652	Entries: 1196	Entries: 2365
Mean: 6.8901 +/- 0.0063	Mean: 10.4870 +/- 0.0082	Mean: 6.5967 +/- 0.0058
Std Dev: 0.2117 +/- 0.0059	Std Dev: 0.2837 +/- 0.0058	Std Dev: 0.2840 +/- 0.0041



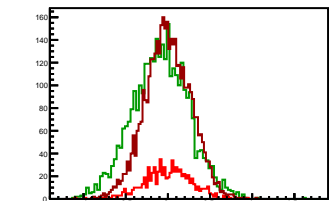
## Cycle 14, NegHel

Entries: 2357	Entries: 3212	Entries: 1372
Mean: 6.5737 +/- 0.0060	Mean: 10.4362 +/- 0.0063	Mean: 6.0686 +/- 0.0100
Std Dev: 0.2895 +/- 0.0042	Std Dev: 0.3570 +/- 0.0045	Std Dev: 0.3719 +/- 0.0071



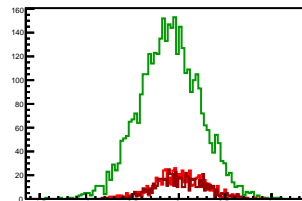
### Cycle 1, Diffs

Entries: 763	Entries: 3341	Entries: 4196
Mean: -0.0002 +/- 0.0100	Mean: -0.0871 +/- 0.0058	Mean: 0.0005 +/- 0.0042
Std Dev: 0.2772 +/- 0.0071	Std Dev: 0.3359 +/- 0.0041	Std Dev: 0.2694 +/- 0.0029



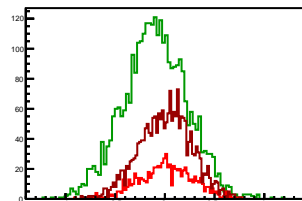
### Cycle 2, Diffs

Entries: 672	Entries: 3812	Entries: 649
Mean: 0.0071 +/- 0.0105	Mean: -0.1006 +/- 0.0053	Mean: 0.0174 +/- 0.0105
Std Dev: 0.2733 +/- 0.0075	Std Dev: 0.3294 +/- 0.0038	Std Dev: 0.2672 +/- 0.0074



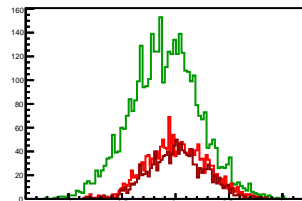
### Cycle 3, Diffs

Entries: 765	Entries: 3212	Entries: 2039
Mean: 0.0115 +/- 0.0099	Mean: -0.0980 +/- 0.0057	Mean: 0.0046 +/- 0.0058
Std Dev: 0.2729 +/- 0.0070	Std Dev: 0.3219 +/- 0.0040	Std Dev: 0.2622 +/- 0.0041



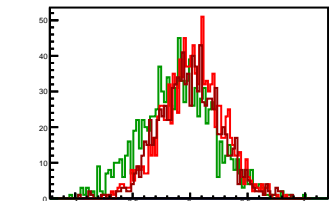
### Cycle 4, Diffs

Entries: 1742	Entries: 3989	Entries: 1350
Mean: 0.0151 +/- 0.0066	Mean: -0.0969 +/- 0.0051	Mean: 0.0177 +/- 0.0073
Std Dev: 0.2761 +/- 0.0047	Std Dev: 0.3240 +/- 0.0036	Std Dev: 0.2686 +/- 0.0052



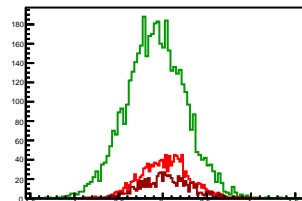
### Cycle 5, Diffs

Entries: 1287	Entries: 1069	Entries: 1053
Mean: 0.0187 +/- 0.0072	Mean: -0.1024 +/- 0.0098	Mean: 0.0014 +/- 0.0083
Std Dev: 0.2576 +/- 0.0051	Std Dev: 0.3200 +/- 0.0069	Std Dev: 0.2692 +/- 0.0059



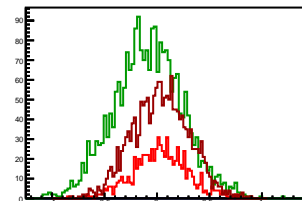
### Cycle 6, Diffs

Entries: 1330	Entries: 4595	Entries: 763
Mean: 0.0260 +/- 0.0074	Mean: -0.0815 +/- 0.0049	Mean: 0.0353 +/- 0.0102
Std Dev: 0.2696 +/- 0.0052	Std Dev: 0.3350 +/- 0.0035	Std Dev: 0.2806 +/- 0.0072



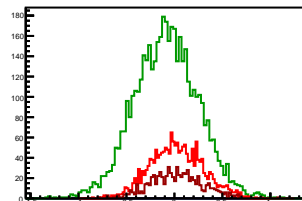
### Cycle 7, Diffs

Entries: 760	Entries: 2427	Entries: 1791
Mean: 0.0283 +/- 0.0096	Mean: -0.0858 +/- 0.0066	Mean: 0.0345 +/- 0.0064
Std Dev: 0.2649 +/- 0.0068	Std Dev: 0.3262 +/- 0.0047	Std Dev: 0.2700 +/- 0.0045



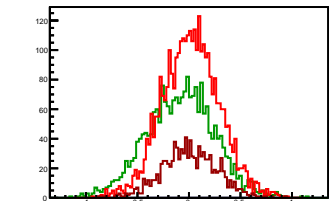
### Cycle 8, Diffs

Entries: 1615	Entries: 4650	Entries: 751
Mean: 0.0220 +/- 0.0064	Mean: -0.0866 +/- 0.0049	Mean: 0.0236 +/- 0.0098
Std Dev: 0.2733 +/- 0.0045	Std Dev: 0.3319 +/- 0.0034	Std Dev: 0.2697 +/- 0.0070



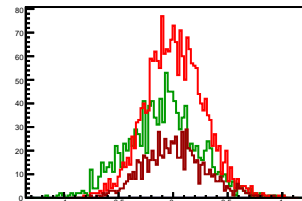
### Cycle 9, Diffs

Entries: 3448	Entries: 2221	Entries: 998
Mean: 0.0174 +/- 0.0047	Mean: -0.0842 +/- 0.0070	Mean: 0.0040 +/- 0.0083
Std Dev: 0.2776 +/- 0.0033	Std Dev: 0.3305 +/- 0.0050	Std Dev: 0.2632 +/- 0.0059



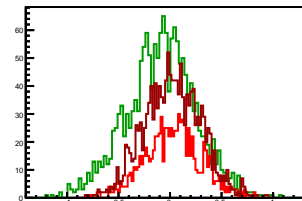
### Cycle 10, Diffs

Entries: 2124	Entries: 1221	Entries: 787
Mean: 0.0164 +/- 0.0058	Mean: -0.0912 +/- 0.0094	Mean: 0.0138 +/- 0.0099
Std Dev: 0.2651 +/- 0.0041	Std Dev: 0.3296 +/- 0.0067	Std Dev: 0.2788 +/- 0.0070



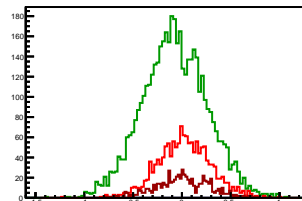
### Cycle 11, Diffs

Entries: 969	Entries: 1669	Entries: 1451
Mean: 0.0308 +/- 0.0091	Mean: -0.0906 +/- 0.0082	Mean: 0.0229 +/- 0.0072
Std Dev: 0.2686 +/- 0.0064	Std Dev: 0.3335 +/- 0.0058	Std Dev: 0.2760 +/- 0.0051



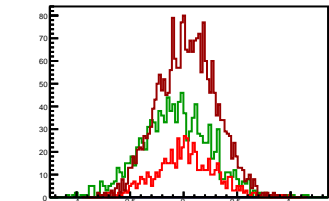
### Cycle 12, Diffs

Entries: 1467	Entries: 4632	Entries: 670
Mean: 0.0253 +/- 0.0071	Mean: -0.0733 +/- 0.0049	Mean: 0.0107 +/- 0.0106
Std Dev: 0.2706 +/- 0.0050	Std Dev: 0.3314 +/- 0.0034	Std Dev: 0.2735 +/- 0.0075



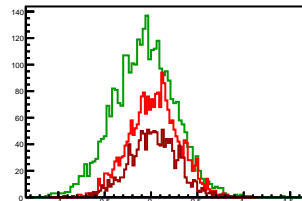
### Cycle 13, Diffs

Entries: 652	Entries: 1196	Entries: 2365
Mean: 0.0149 +/- 0.0112	Mean: -0.0733 +/- 0.0095	Mean: 0.0331 +/- 0.0056
Std Dev: 0.2856 +/- 0.0079	Std Dev: 0.3276 +/- 0.0067	Std Dev: 0.2702 +/- 0.0039



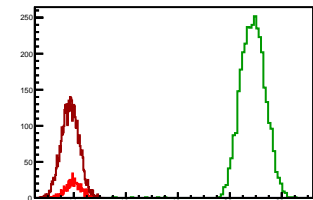
### Cycle 14, Diffs

Entries: 2357	Entries: 3212	Entries: 1372
Mean: 0.0324 +/- 0.0056	Mean: -0.0747 +/- 0.0058	Mean: 0.0293 +/- 0.0070
Std Dev: 0.2715 +/- 0.0040	Std Dev: 0.3285 +/- 0.0041	Std Dev: 0.2609 +/- 0.0050



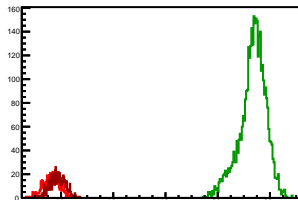
## Cycle 1, Sums

Entries: 763	Entries: 3341	Entries: 4196
Mean: 13.9928 +/- 0.0112	Mean: 20.8807 +/- 0.0088	Mean: 13.8593 +/- 0.0053
Std Dev: 0.3102 +/- 0.0079	Std Dev: 0.5085 +/- 0.0062	Std Dev: 0.3419 +/- 0.0037



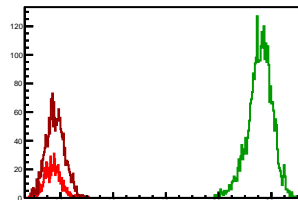
## Cycle 2, Sums

Entries: 672	Entries: 3812	Entries: 649
Mean: 13.6476 +/- 0.0123	Mean: 21.3430 +/- 0.0082	Mean: 13.8704 +/- 0.0113
Std Dev: 0.3201 +/- 0.0087	Std Dev: 0.5086 +/- 0.0058	Std Dev: 0.2873 +/- 0.0080



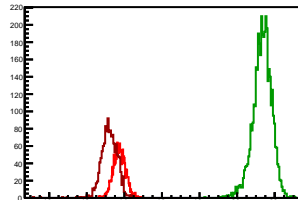
## Cycle 3, Sums

Entries: 765	Entries: 3212	Entries: 2039
Mean: 13.7088 +/- 0.0110	Mean: 21.5723 +/- 0.0082	Mean: 13.8015 +/- 0.0078
Std Dev: 0.3045 +/- 0.0078	Std Dev: 0.4627 +/- 0.0058	Std Dev: 0.3516 +/- 0.0055



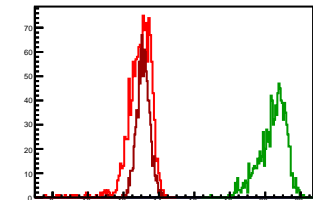
## Cycle 4, Sums

Entries: 1742	Entries: 3989	Entries: 1350
Mean: 13.7369 +/- 0.0078	Mean: 21.3340 +/- 0.0080	Mean: 13.1961 +/- 0.0120
Std Dev: 0.3235 +/- 0.0055	Std Dev: 0.5037 +/- 0.0056	Std Dev: 0.4426 +/- 0.0085



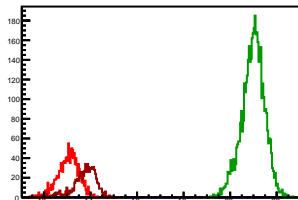
## Cycle 5, Sums

Entries: 1287	Entries: 1069	Entries: 1053
Mean: 12.9293 +/- 0.0190	Mean: 20.4209 +/- 0.0233	Mean: 13.1094 +/- 0.0116
Std Dev: 0.6828 +/- 0.0135	Std Dev: 0.7610 +/- 0.0165	Std Dev: 0.3773 +/- 0.0082



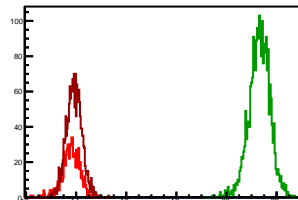
## Cycle 6, Sums

Entries: 1330	Entries: 4595	Entries: 763
Mean: 13.0461 +/- 0.0123	Mean: 20.9845 +/- 0.0073	Mean: 13.7367 +/- 0.0189
Std Dev: 0.4488 +/- 0.0087	Std Dev: 0.4919 +/- 0.0051	Std Dev: 0.5210 +/- 0.0133



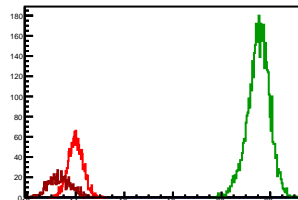
## Cycle 7, Sums

Entries: 760	Entries: 2427	Entries: 1791
Mean: 13.7870 +/- 0.0126	Mean: 21.3125 +/- 0.0085	Mean: 13.9154 +/- 0.0073
Std Dev: 0.3485 +/- 0.0089	Std Dev: 0.4194 +/- 0.0060	Std Dev: 0.3108 +/- 0.0052



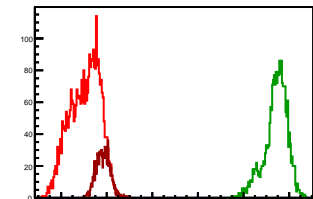
## Cycle 8, Sums

Entries: 1815	Entries: 4650	Entries: 751
Mean: 13.9958 +/- 0.0071	Mean: 21.5230 +/- 0.0067	Mean: 13.3518 +/- 0.0165
Std Dev: 0.3032 +/- 0.0050	Std Dev: 0.4536 +/- 0.0047	Std Dev: 0.4523 +/- 0.0117



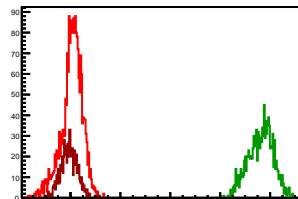
## Cycle 9, Sums

Entries: 3448	Entries: 2221	Entries: 998
Mean: 13.0462 +/- 0.0111	Mean: 21.4255 +/- 0.0107	Mean: 13.8414 +/- 0.0095
Std Dev: 0.6535 +/- 0.0079	Std Dev: 0.5043 +/- 0.0076	Std Dev: 0.3014 +/- 0.0067



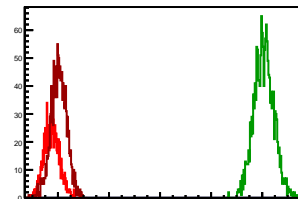
## Cycle 10, Sums

Entries: 2124	Entries: 1221	Entries: 787
Mean: 14.0549 +/- 0.0093	Mean: 21.6250 +/- 0.0143	Mean: 13.9472 +/- 0.0117
Std Dev: 0.4288 +/- 0.0066	Std Dev: 0.4981 +/- 0.0101	Std Dev: 0.3273 +/- 0.0082



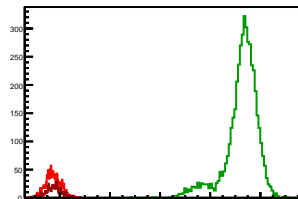
## Cycle 11, Sums

Entries: 869	Entries: 1669	Entries: 1451
Mean: 13.7550 +/- 0.0103	Mean: 22.0682 +/- 0.0096	Mean: 14.0376 +/- 0.0081
Std Dev: 0.3022 +/- 0.0072	Std Dev: 0.3904 +/- 0.0068	Std Dev: 0.3097 +/- 0.0057



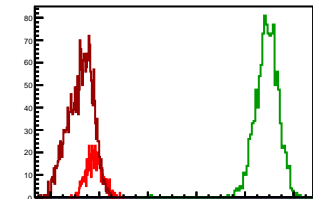
## Cycle 12, Sums

Entries: 1467	Entries: 4632	Entries: 670
Mean: 13.7354 +/- 0.0079	Mean: 21.2480 +/- 0.0097	Mean: 13.7512 +/- 0.0116
Std Dev: 0.3032 +/- 0.0056	Std Dev: 0.6623 +/- 0.0069	Std Dev: 0.3015 +/- 0.0082



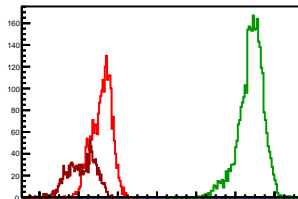
## Cycle 13, Sums

Entries: 652	Entries: 1196	Entries: 2365
Mean: 13.7952 +/- 0.0127	Mean: 20.9007 +/- 0.0137	Mean: 13.2265 +/- 0.0104
Std Dev: 0.3252 +/- 0.0090	Std Dev: 0.4733 +/- 0.0097	Std Dev: 0.5067 +/- 0.0074



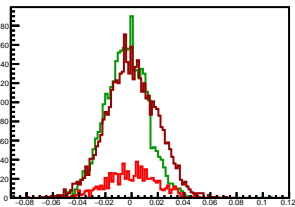
## Cycle 14, Sums

Entries: 2357	Entries: 3212	Entries: 1372
Mean: 13.1797 +/- 0.0104	Mean: 20.7976 +/- 0.0113	Mean: 12.1666 +/- 0.0187
Std Dev: 0.5065 +/- 0.0074	Std Dev: 0.6412 +/- 0.0080	Std Dev: 0.6931 +/- 0.0132



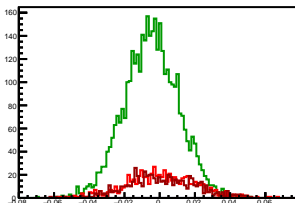
## Cycle 1, Asyms

Entries: 763	Entries: 3341	Entries: 4196
Mean: 0.0000 +/- 0.0007	Mean: -0.0042 +/- 0.0003	Mean: 0.0000 +/- 0.0003
Std Dev: 0.0198 +/- 0.0005	Std Dev: 0.0162 +/- 0.0002	Std Dev: 0.0194 +/- 0.0002



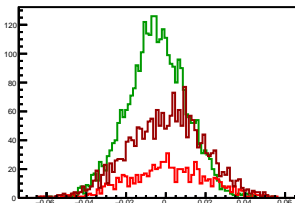
## Cycle 2, Asyms

Entries: 672	Entries: 3812	Entries: 649
Mean: 0.0005 +/- 0.0008	Mean: -0.0047 +/- 0.0002	Mean: 0.0012 +/- 0.0008
Std Dev: 0.0200 +/- 0.0005	Std Dev: 0.0154 +/- 0.0002	Std Dev: 0.0192 +/- 0.0005



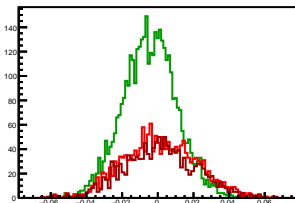
## Cycle 3, Asyms

Entries: 765	Entries: 3212	Entries: 2039
Mean: 0.0009 +/- 0.0007	Mean: -0.0045 +/- 0.0003	Mean: 0.0003 +/- 0.0004
Std Dev: 0.0199 +/- 0.0005	Std Dev: 0.0149 +/- 0.0002	Std Dev: 0.0190 +/- 0.0003



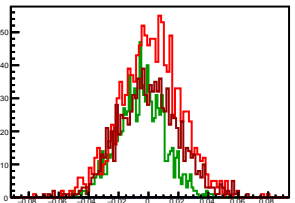
## Cycle 4, Asyms

Entries: 1742	Entries: 3989	Entries: 1350
Mean: 0.0011 +/- 0.0005	Mean: -0.0046 +/- 0.0002	Mean: 0.0014 +/- 0.0006
Std Dev: 0.0201 +/- 0.0003	Std Dev: 0.0152 +/- 0.0002	Std Dev: 0.0203 +/- 0.0004



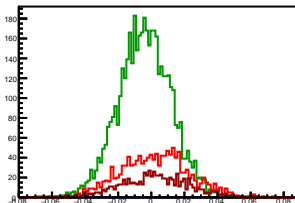
## Cycle 5, Asyms

Entries: 1287	Entries: 1069	Entries: 1053
Mean: 0.0015 +/- 0.0006	Mean: -0.0050 +/- 0.0005	Mean: 0.0001 +/- 0.0006
Std Dev: 0.0201 +/- 0.0004	Std Dev: 0.0157 +/- 0.0003	Std Dev: 0.0205 +/- 0.0004



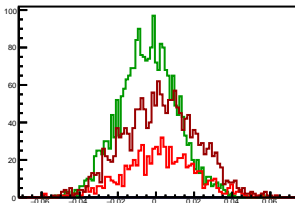
## Cycle 6, Asyms

Entries: 1330	Entries: 4595	Entries: 763
Mean: 0.0020 +/- 0.0006	Mean: -0.0039 +/- 0.0002	Mean: 0.0026 +/- 0.0007
Std Dev: 0.0206 +/- 0.0004	Std Dev: 0.0160 +/- 0.0002	Std Dev: 0.0203 +/- 0.0005



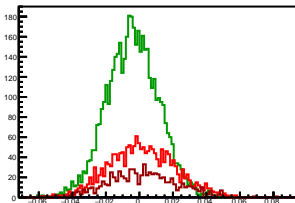
## Cycle 7, Asyms

Entries: 760	Entries: 2427	Entries: 1791
Mean: 0.0021 +/- 0.0007	Mean: -0.0040 +/- 0.0003	Mean: 0.0025 +/- 0.0005
Std Dev: 0.0192 +/- 0.0005	Std Dev: 0.0153 +/- 0.0002	Std Dev: 0.0194 +/- 0.0003



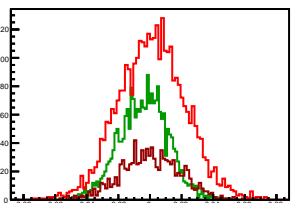
## Cycle 8, Asyms

Entries: 1815	Entries: 4650	Entries: 751
Mean: 0.0016 +/- 0.0005	Mean: -0.0040 +/- 0.0002	Mean: 0.0018 +/- 0.0007
Std Dev: 0.0195 +/- 0.0003	Std Dev: 0.0154 +/- 0.0002	Std Dev: 0.0202 +/- 0.0005



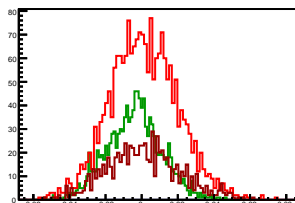
## Cycle 9, Asyms

Entries: 3448	Entries: 2221	Entries: 998
Mean: 0.0013 +/- 0.0004	Mean: -0.0039 +/- 0.0003	Mean: 0.0003 +/- 0.0006
Std Dev: 0.0213 +/- 0.0003	Std Dev: 0.0154 +/- 0.0002	Std Dev: 0.0190 +/- 0.0004



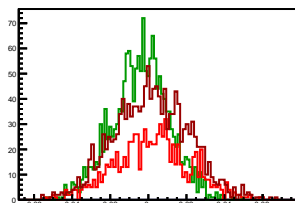
## Cycle 10, Asyms

Entries: 2124	Entries: 1221	Entries: 787
Mean: 0.0012 +/- 0.0004	Mean: -0.0042 +/- 0.0004	Mean: 0.0010 +/- 0.0007
Std Dev: 0.0188 +/- 0.0003	Std Dev: 0.0152 +/- 0.0003	Std Dev: 0.0199 +/- 0.0005



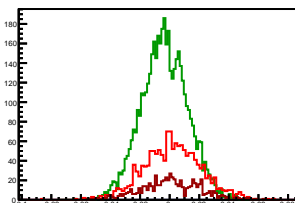
## Cycle 11, Asyms

Entries: 969	Entries: 1669	Entries: 1451
Mean: 0.0022 +/- 0.0007	Mean: -0.0041 +/- 0.0004	Mean: 0.0016 +/- 0.0005
Std Dev: 0.0195 +/- 0.0005	Std Dev: 0.0151 +/- 0.0003	Std Dev: 0.0196 +/- 0.0004



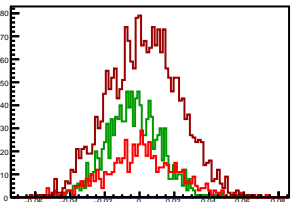
## Cycle 12, Asyms

Entries: 1467	Entries: 4632	Entries: 670
Mean: 0.0018 +/- 0.0005	Mean: -0.0035 +/- 0.0002	Mean: 0.0008 +/- 0.0008
Std Dev: 0.0197 +/- 0.0004	Std Dev: 0.0156 +/- 0.0002	Std Dev: 0.0199 +/- 0.0005



## Cycle 13, Asyms

Entries: 652	Entries: 1196	Entries: 2365
Mean: 0.0011 +/- 0.0008	Mean: -0.0035 +/- 0.0005	Mean: 0.0025 +/- 0.0004
Std Dev: 0.0206 +/- 0.0006	Std Dev: 0.0157 +/- 0.0003	Std Dev: 0.0204 +/- 0.0003



## Cycle 14, Asyms

Entries: 2357	Entries: 3212	Entries: 1372
Mean: 0.0025 +/- 0.0004	Mean: -0.0036 +/- 0.0003	Mean: 0.0024 +/- 0.0006
Std Dev: 0.0206 +/- 0.0003	Std Dev: 0.0158 +/- 0.0002	Std Dev: 0.0215 +/- 0.0004

