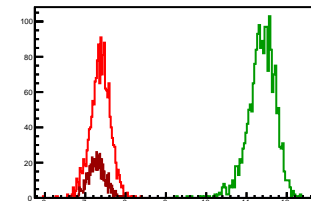


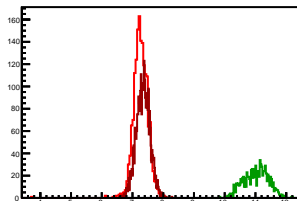
Cycle 1, PosHel

Entries: 1653	Entries: 2031	Entries: 692
Mean: 7.3702 +/- 0.0062	Mean: 11.3732 +/- 0.0076	Mean: 7.2866 +/- 0.0081
Std Dev: 0.2517 +/- 0.0044	Std Dev: 0.3416 +/- 0.0054	Std Dev: 0.2126 +/- 0.0057



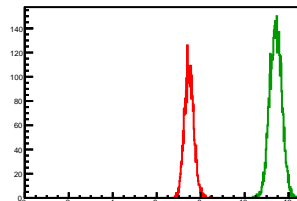
Cycle 2, PosHel

Entries: 1656	Entries: 918	Entries: 2859
Mean: 7.2666 +/- 0.0060	Mean: 11.0251 +/- 0.0151	Mean: 7.3446 +/- 0.0042
Std Dev: 0.2430 +/- 0.0042	Std Dev: 0.3956 +/- 0.0092	Std Dev: 0.2243 +/- 0.0030



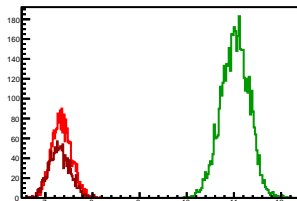
Cycle 3, PosHel

Entries: 2895	Entries: 3984	Entries: 0
Mean: 7.4734 +/- 0.0040	Mean: 11.4121 +/- 0.0043	Mean: 0.0000 +/- 0.0000
Std Dev: 0.2154 +/- 0.0028	Std Dev: 0.2703 +/- 0.0030	Std Dev: 0.0000 +/- 0.0000



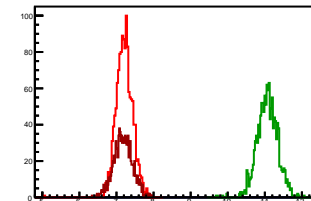
Cycle 4, PosHel

Entries: 2491	Entries: 4649	Entries: 1673
Mean: 7.3466 +/- 0.0042	Mean: 11.0237 +/- 0.0044	Mean: 7.2995 +/- 0.0054
Std Dev: 0.2073 +/- 0.0029	Std Dev: 0.2979 +/- 0.0031	Std Dev: 0.2207 +/- 0.0038



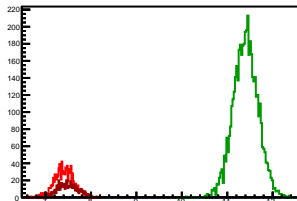
Cycle 5, PosHel

Entries: 1356	Entries: 1314	Entries: 1076
Mean: 7.2166 +/- 0.0060	Mean: 11.0676 +/- 0.0076	Mean: 7.1763 +/- 0.0077
Std Dev: 0.2204 +/- 0.0042	Std Dev: 0.2773 +/- 0.0054	Std Dev: 0.2522 +/- 0.0054



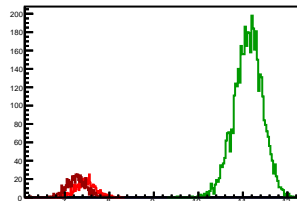
Cycle 6, PosHel

Entries: 1053	Entries: 4688	Entries: 575
Mean: 7.4112 +/- 0.0067	Mean: 11.4030 +/- 0.0040	Mean: 7.4911 +/- 0.0091
Std Dev: 0.2190 +/- 0.0048	Std Dev: 0.2717 +/- 0.0028	Std Dev: 0.2193 +/- 0.0065



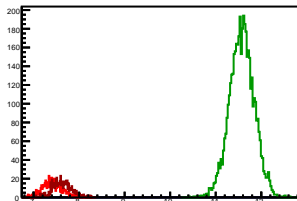
Cycle 7, PosHel

Entries: 573	Entries: 4605	Entries: 578
Mean: 7.4616 +/- 0.0097	Mean: 11.1182 +/- 0.0047	Mean: 7.2653 +/- 0.0094
Std Dev: 0.2314 +/- 0.0068	Std Dev: 0.3176 +/- 0.0033	Std Dev: 0.2258 +/- 0.0066



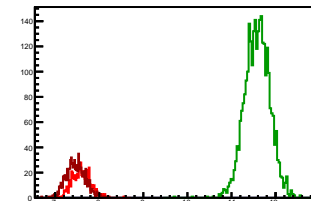
Cycle 8, PosHel

Entries: 581	Entries: 4602	Entries: 595
Mean: 7.4059 +/- 0.0089	Mean: 11.5735 +/- 0.0040	Mean: 7.6217 +/- 0.0086
Std Dev: 0.2142 +/- 0.0063	Std Dev: 0.2707 +/- 0.0028	Std Dev: 0.2099 +/- 0.0061



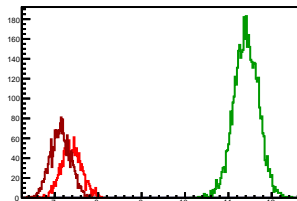
Cycle 9, PosHel

Entries: 594	Entries: 2867	Entries: 828
Mean: 7.5876 +/- 0.0085	Mean: 11.5835 +/- 0.0053	Mean: 7.4685 +/- 0.0076
Std Dev: 0.2079 +/- 0.0060	Std Dev: 0.2842 +/- 0.0038	Std Dev: 0.2175 +/- 0.0053



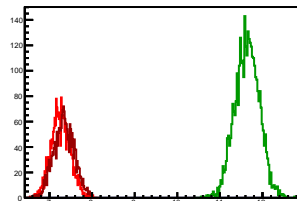
Cycle 10, PosHel

Entries: 1578	Entries: 4597	Entries: 2279
Mean: 7.3850 +/- 0.0059	Mean: 11.4074 +/- 0.0042	Mean: 7.1326 +/- 0.0048
Std Dev: 0.2335 +/- 0.0042	Std Dev: 0.2848 +/- 0.0030	Std Dev: 0.2305 +/- 0.0034



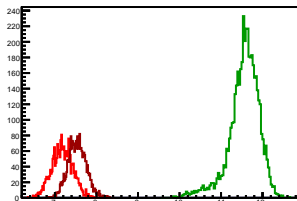
Cycle 11, PosHel

Entries: 2218	Entries: 3493	Entries: 2162
Mean: 7.2606 +/- 0.0048	Mean: 11.6404 +/- 0.0048	Mean: 7.3430 +/- 0.0052
Std Dev: 0.2255 +/- 0.0034	Std Dev: 0.2862 +/- 0.0034	Std Dev: 0.2399 +/- 0.0036



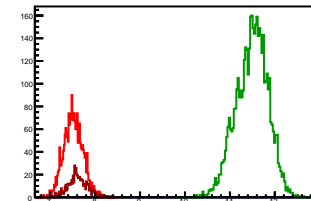
Cycle 12, PosHel

Entries: 2170	Entries: 4623	Entries: 2280
Mean: 7.1749 +/- 0.0053	Mean: 11.5502 +/- 0.0055	Mean: 7.5368 +/- 0.0046
Std Dev: 0.2485 +/- 0.0038	Std Dev: 0.3741 +/- 0.0039	Std Dev: 0.2180 +/- 0.0032



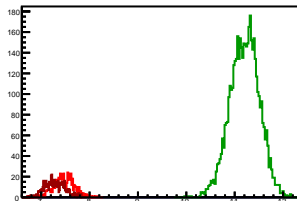
Cycle 13, PosHel

Entries: 2250	Entries: 4635	Entries: 581
Mean: 7.5158 +/- 0.0045	Mean: 11.4888 +/- 0.0051	Mean: 7.6163 +/- 0.0089
Std Dev: 0.2139 +/- 0.0032	Std Dev: 0.3494 +/- 0.0038	Std Dev: 0.2140 +/- 0.0063



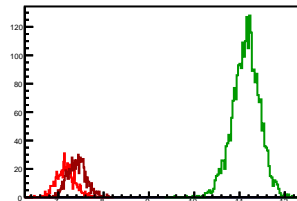
Cycle 14, PosHel

Entries: 599	Entries: 4671	Entries: 597
Mean: 7.4786 +/- 0.0087	Mean: 11.2046 +/- 0.0044	Mean: 7.2792 +/- 0.0087
Std Dev: 0.2132 +/- 0.0062	Std Dev: 0.3015 +/- 0.0031	Std Dev: 0.2117 +/- 0.0061



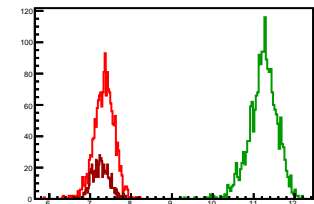
Cycle 15, PosHel

Entries: 623	Entries: 2638	Entries: 850
Mean: 7.1619 +/- 0.0085	Mean: 11.1417 +/- 0.0058	Mean: 7.4130 +/- 0.0070
Std Dev: 0.2123 +/- 0.0060	Std Dev: 0.3001 +/- 0.0041	Std Dev: 0.2050 +/- 0.0050



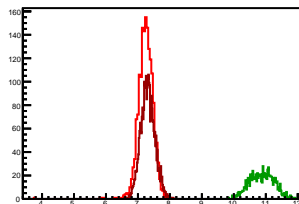
Cycle 1, NegHel

Entries: 1653	Entries: 2031	Entries: 692
Mean: 7.3436 +/- 0.0061	Mean: 11.2269 +/- 0.0076	Mean: 7.2577 +/- 0.0080
Std Dev: 0.2496 +/- 0.0043	Std Dev: 0.3441 +/- 0.0054	Std Dev: 0.2099 +/- 0.0056



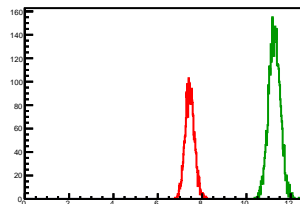
Cycle 2, NegHel

Entries: 1656	Entries: 918	Entries: 2859
Mean: 7.2414 +/- 0.0059	Mean: 10.8716 +/- 0.0126	Mean: 7.3091 +/- 0.0041
Std Dev: 0.2385 +/- 0.0041	Std Dev: 0.3809 +/- 0.0089	Std Dev: 0.2203 +/- 0.0029



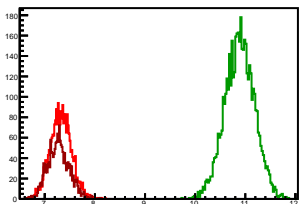
Cycle 3, NegHel

Entries: 2895	Entries: 3984	Entries: 0
Mean: 7.4465 +/- 0.0039	Mean: 11.2648 +/- 0.0042	Mean: 0.0000 +/- 0.0000
Std Dev: 0.2111 +/- 0.0028	Std Dev: 0.2626 +/- 0.0029	Std Dev: 0.0000 +/- 0.0000



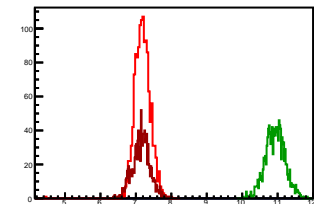
Cycle 4, NegHel

Entries: 2491	Entries: 4649	Entries: 1673
Mean: 7.3185 +/- 0.0043	Mean: 10.8856 +/- 0.0044	Mean: 7.2729 +/- 0.0053
Std Dev: 0.2139 +/- 0.0030	Std Dev: 0.2974 +/- 0.0031	Std Dev: 0.2158 +/- 0.0037



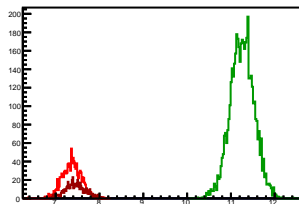
Cycle 5, NegHel

Entries: 1356	Entries: 1314	Entries: 1076
Mean: 7.1874 +/- 0.0061	Mean: 10.9325 +/- 0.0076	Mean: 7.1521 +/- 0.0076
Std Dev: 0.2254 +/- 0.0043	Std Dev: 0.2765 +/- 0.0054	Std Dev: 0.2501 +/- 0.0054



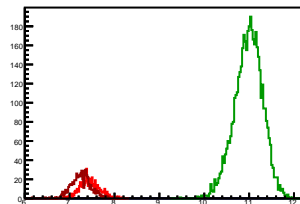
Cycle 6, NegHel

Entries: 1053	Entries: 4688	Entries: 575
Mean: 7.3685 +/- 0.0068	Mean: 11.2577 +/- 0.0040	Mean: 7.4492 +/- 0.0095
Std Dev: 0.2199 +/- 0.0048	Std Dev: 0.2734 +/- 0.0028	Std Dev: 0.2286 +/- 0.0067



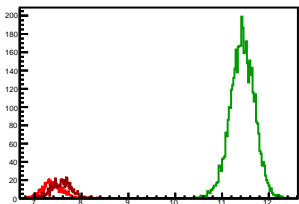
Cycle 7, NegHel

Entries: 573	Entries: 4605	Entries: 578
Mean: 7.4379 +/- 0.0094	Mean: 10.9845 +/- 0.0046	Mean: 7.2544 +/- 0.0092
Std Dev: 0.2244 +/- 0.0066	Std Dev: 0.3134 +/- 0.0033	Std Dev: 0.2223 +/- 0.0065



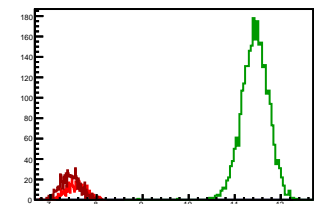
Cycle 8, NegHel

Entries: 581	Entries: 4602	Entries: 595
Mean: 7.3759 +/- 0.0085	Mean: 11.4319 +/- 0.0038	Mean: 7.5744 +/- 0.0090
Std Dev: 0.2049 +/- 0.0060	Std Dev: 0.2604 +/- 0.0027	Std Dev: 0.2194 +/- 0.0064



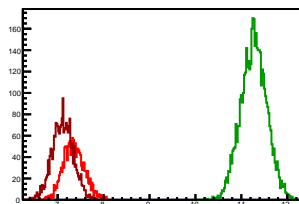
Cycle 9, NegHel

Entries: 594	Entries: 2867	Entries: 828
Mean: 7.5480 +/- 0.0087	Mean: 11.4392 +/- 0.0054	Mean: 7.4269 +/- 0.0075
Std Dev: 0.2118 +/- 0.0061	Std Dev: 0.2914 +/- 0.0038	Std Dev: 0.2167 +/- 0.0053



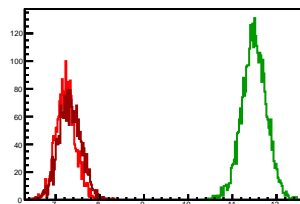
Cycle 10, NegHel

Entries: 1578	Entries: 4597	Entries: 2279
Mean: 7.3492 +/- 0.0058	Mean: 11.2714 +/- 0.0042	Mean: 7.1098 +/- 0.0048
Std Dev: 0.2313 +/- 0.0041	Std Dev: 0.2820 +/- 0.0029	Std Dev: 0.2279 +/- 0.0034



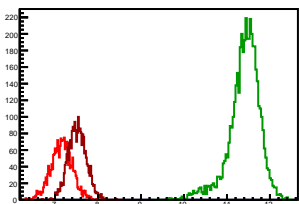
Cycle 11, NegHel

Entries: 2218	Entries: 3493	Entries: 2162
Mean: 7.2299 +/- 0.0047	Mean: 11.4943 +/- 0.0047	Mean: 7.3209 +/- 0.0054
Std Dev: 0.2202 +/- 0.0033	Std Dev: 0.2803 +/- 0.0034	Std Dev: 0.2505 +/- 0.0038



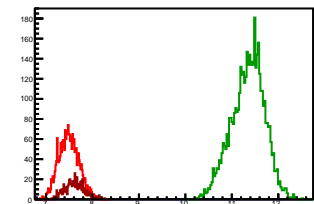
Cycle 12, NegHel

Entries: 2170	Entries: 4623	Entries: 2280
Mean: 7.1538 +/- 0.0053	Mean: 11.4018 +/- 0.0054	Mean: 7.5177 +/- 0.0044
Std Dev: 0.2476 +/- 0.0038	Std Dev: 0.3657 +/- 0.0038	Std Dev: 0.2105 +/- 0.0031



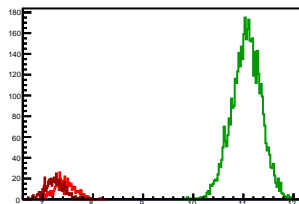
Cycle 13, NegHel

Entries: 2250	Entries: 4635	Entries: 581
Mean: 7.4902 +/- 0.0045	Mean: 11.3487 +/- 0.0052	Mean: 7.6122 +/- 0.0085
Std Dev: 0.2149 +/- 0.0032	Std Dev: 0.3534 +/- 0.0037	Std Dev: 0.2048 +/- 0.0060



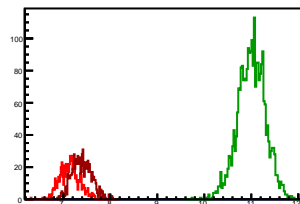
Cycle 14, NegHel

Entries: 599	Entries: 4671	Entries: 597
Mean: 7.4432 +/- 0.0087	Mean: 11.0590 +/- 0.0043	Mean: 7.2384 +/- 0.0081
Std Dev: 0.2120 +/- 0.0061	Std Dev: 0.2918 +/- 0.0030	Std Dev: 0.1973 +/- 0.0057



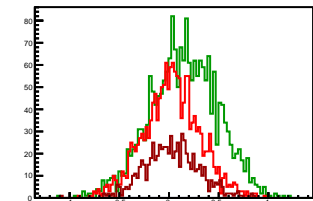
Cycle 15, NegHel

Entries: 623	Entries: 2638	Entries: 850
Mean: 7.1433 +/- 0.0086	Mean: 11.0062 +/- 0.0057	Mean: 7.3943 +/- 0.0071
Std Dev: 0.2141 +/- 0.0061	Std Dev: 0.2923 +/- 0.0040	Std Dev: 0.2076 +/- 0.0050



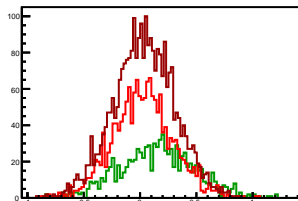
Cycle 1, Diffs

Entries: 1653	Entries: 2031	Entries: 692
Mean: 0.0266 +/- 0.0070	Mean: 0.1462 +/- 0.0075	Mean: 0.0289 +/- 0.0103
Std Dev: 0.2831 +/- 0.0049	Std Dev: 0.3397 +/- 0.0053	Std Dev: 0.2697 +/- 0.0072



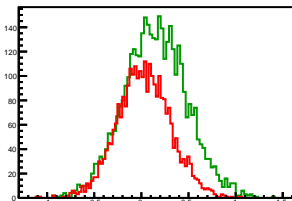
Cycle 2, Diffs

Entries: 1656	Entries: 918	Entries: 2859
Mean: 0.0252 +/- 0.0067	Mean: 0.1535 +/- 0.0111	Mean: 0.0355 +/- 0.0051
Std Dev: 0.2708 +/- 0.0047	Std Dev: 0.3366 +/- 0.0079	Std Dev: 0.2732 +/- 0.0036



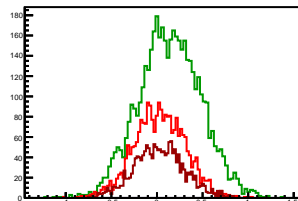
Cycle 3, Diffs

Entries: 2895	Entries: 3984	Entries: 0
Mean: 0.0270 +/- 0.0053	Mean: 0.1473 +/- 0.0053	Mean: 0.0000 +/- 0.0000
Std Dev: 0.2830 +/- 0.0037	Std Dev: 0.3340 +/- 0.0037	Std Dev: 0.0000 +/- 0.0000



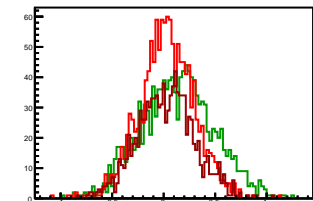
Cycle 4, Diffs

Entries: 2491	Entries: 4649	Entries: 1673
Mean: 0.0281 +/- 0.0056	Mean: 0.1380 +/- 0.0050	Mean: 0.0266 +/- 0.0067
Std Dev: 0.2785 +/- 0.0039	Std Dev: 0.3428 +/- 0.0036	Std Dev: 0.2734 +/- 0.0047



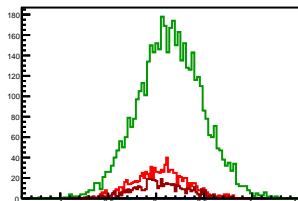
Cycle 5, Diffs

Entries: 1356	Entries: 1314	Entries: 1076
Mean: 0.0292 +/- 0.0073	Mean: 0.1352 +/- 0.0097	Mean: 0.0242 +/- 0.0084
Std Dev: 0.2674 +/- 0.0051	Std Dev: 0.3501 +/- 0.0068	Std Dev: 0.2768 +/- 0.0060



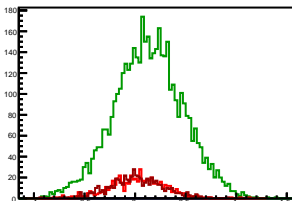
Cycle 6, Diffs

Entries: 1053	Entries: 4688	Entries: 575
Mean: 0.0427 +/- 0.0084	Mean: 0.1453 +/- 0.0049	Mean: 0.0419 +/- 0.0115
Std Dev: 0.2720 +/- 0.0059	Std Dev: 0.3358 +/- 0.0035	Std Dev: 0.2761 +/- 0.0081



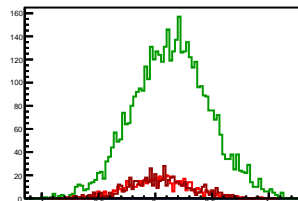
Cycle 7, Diffs

Entries: 573	Entries: 4605	Entries: 578
Mean: 0.0237 +/- 0.0118	Mean: 0.1337 +/- 0.0050	Mean: 0.0109 +/- 0.0110
Std Dev: 0.2818 +/- 0.0083	Std Dev: 0.3416 +/- 0.0036	Std Dev: 0.2634 +/- 0.0077



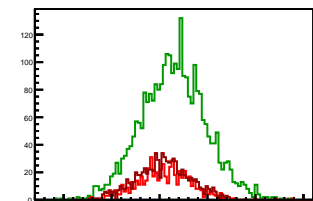
Cycle 8, Diffs

Entries: 581	Entries: 4602	Entries: 595
Mean: 0.0340 +/- 0.0115	Mean: 0.1416 +/- 0.0049	Mean: 0.0474 +/- 0.0118
Std Dev: 0.2762 +/- 0.0081	Std Dev: 0.3333 +/- 0.0035	Std Dev: 0.2876 +/- 0.0083



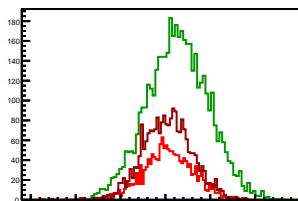
Cycle 9, Diffs

Entries: 594	Entries: 2867	Entries: 828
Mean: 0.0396 +/- 0.0114	Mean: 0.1443 +/- 0.0063	Mean: 0.0415 +/- 0.0098
Std Dev: 0.2773 +/- 0.0080	Std Dev: 0.3376 +/- 0.0045	Std Dev: 0.2812 +/- 0.0069



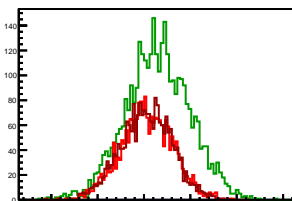
Cycle 10, Diffs

Entries: 1578	Entries: 4597	Entries: 2279
Mean: 0.0358 +/- 0.0070	Mean: 0.1359 +/- 0.0051	Mean: 0.0228 +/- 0.0057
Std Dev: 0.2794 +/- 0.0050	Std Dev: 0.3436 +/- 0.0036	Std Dev: 0.2712 +/- 0.0040



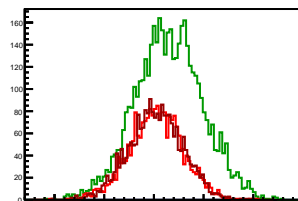
Cycle 11, Diffs

Entries: 2218	Entries: 3493	Entries: 2162
Mean: 0.0307 +/- 0.0060	Mean: 0.1462 +/- 0.0059	Mean: 0.0221 +/- 0.0060
Std Dev: 0.2812 +/- 0.0042	Std Dev: 0.3488 +/- 0.0042	Std Dev: 0.2787 +/- 0.0042



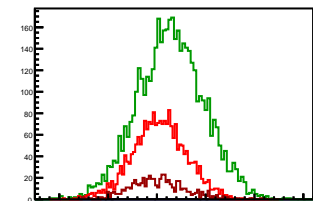
Cycle 12, Diffs

Entries: 2170	Entries: 4623	Entries: 2280
Mean: 0.0211 +/- 0.0058	Mean: 0.1484 +/- 0.0050	Mean: 0.0191 +/- 0.0057
Std Dev: 0.2692 +/- 0.0041	Std Dev: 0.3408 +/- 0.0035	Std Dev: 0.2729 +/- 0.0040



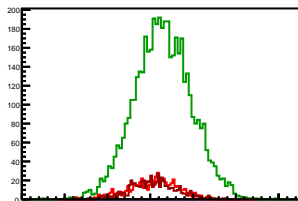
Cycle 13, Diffs

Entries: 2250	Entries: 4635	Entries: 581
Mean: 0.0256 +/- 0.0059	Mean: 0.1401 +/- 0.0050	Mean: 0.0041 +/- 0.0117
Std Dev: 0.2777 +/- 0.0041	Std Dev: 0.3393 +/- 0.0035	Std Dev: 0.2810 +/- 0.0082



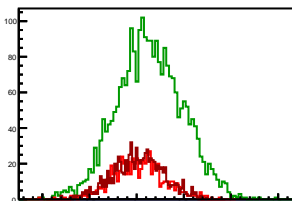
Cycle 14, Diffs

Entries: 599	Entries: 4671	Entries: 597
Mean: 0.0353 +/- 0.0117	Mean: 0.1456 +/- 0.0048	Mean: 0.0408 +/- 0.0112
Std Dev: 0.2871 +/- 0.0083	Std Dev: 0.3307 +/- 0.0034	Std Dev: 0.2742 +/- 0.0079



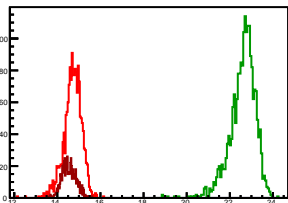
Cycle 15, Diffs

Entries: 623	Entries: 2638	Entries: 850
Mean: 0.0186 +/- 0.0111	Mean: 0.1355 +/- 0.0068	Mean: 0.0187 +/- 0.0092
Std Dev: 0.2768 +/- 0.0078	Std Dev: 0.3478 +/- 0.0048	Std Dev: 0.2695 +/- 0.0065



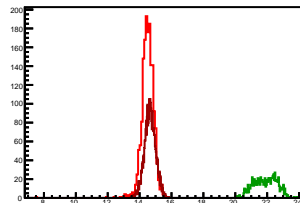
Cycle 1, Sums

Entries: 1653	Entries: 2031	Entries: 692
Mean: 14.7138 +/- 0.0102	Mean: 22.6001 +/- 0.0132	Mean: 14.5443 +/- 0.0124
Std Dev: 0.4138 +/- 0.0072	Std Dev: 0.5957 +/- 0.0093	Std Dev: 0.3253 +/- 0.0087



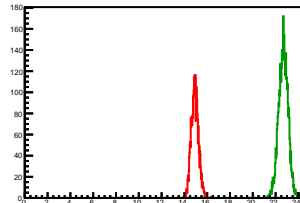
Cycle 2, Sums

Entries: 1656	Entries: 918	Entries: 2859
Mean: 14.5080 +/- 0.0098	Mean: 21.8967 +/- 0.0231	Mean: 14.6536 +/- 0.0066
Std Dev: 0.3982 +/- 0.0069	Std Dev: 0.6999 +/- 0.0163	Std Dev: 0.3507 +/- 0.0046



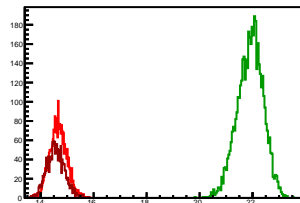
Cycle 3, Sums

Entries: 2895	Entries: 3984	Entries: 0
Mean: 14.9199 +/- 0.0059	Mean: 22.6768 +/- 0.0066	Mean: 0.0000 +/- 0.0000
Std Dev: 0.3190 +/- 0.0042	Std Dev: 0.4153 +/- 0.0047	Std Dev: 0.0000 +/- 0.0000



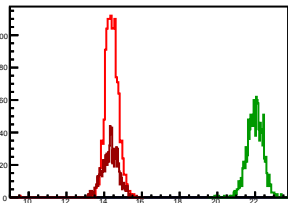
Cycle 4, Sums

Entries: 2491	Entries: 4649	Entries: 1673
Mean: 14.6651 +/- 0.0063	Mean: 21.9093 +/- 0.0071	Mean: 14.5724 +/- 0.0083
Std Dev: 0.3160 +/- 0.0045	Std Dev: 0.4867 +/- 0.0050	Std Dev: 0.3404 +/- 0.0059



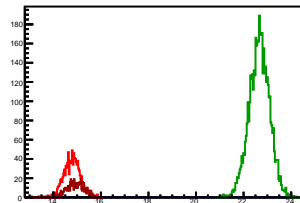
Cycle 5, Sums

Entries: 1356	Entries: 1314	Entries: 1076
Mean: 14.4040 +/- 0.0097	Mean: 22.0001 +/- 0.0118	Mean: 14.3284 +/- 0.0128
Std Dev: 0.3581 +/- 0.0069	Std Dev: 0.4290 +/- 0.0084	Std Dev: 0.4192 +/- 0.0090



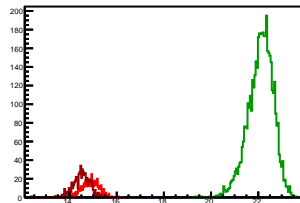
Cycle 6, Sums

Entries: 1053	Entries: 4688	Entries: 575
Mean: 14.7796 +/- 0.0106	Mean: 22.6606 +/- 0.0063	Mean: 14.9402 +/- 0.0147
Std Dev: 0.3444 +/- 0.0075	Std Dev: 0.4293 +/- 0.0044	Std Dev: 0.3528 +/- 0.0104



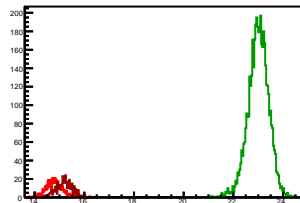
Cycle 7, Sums

Entries: 573	Entries: 4605	Entries: 578
Mean: 14.8996 +/- 0.0150	Mean: 22.1027 +/- 0.0078	Mean: 14.5196 +/- 0.0151
Std Dev: 0.3583 +/- 0.0106	Std Dev: 0.5305 +/- 0.0055	Std Dev: 0.3626 +/- 0.0107



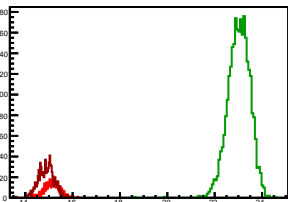
Cycle 8, Sums

Entries: 581	Entries: 4602	Entries: 595
Mean: 14.7858 +/- 0.0131	Mean: 23.0054 +/- 0.0061	Mean: 15.1961 +/- 0.0131
Std Dev: 0.3153 +/- 0.0092	Std Dev: 0.4137 +/- 0.0043	Std Dev: 0.3188 +/- 0.0092



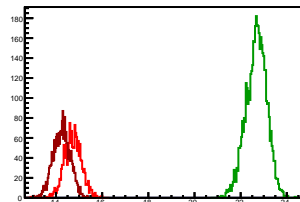
Cycle 9, Sums

Entries: 594	Entries: 2867	Entries: 828
Mean: 15.1356 +/- 0.0129	Mean: 23.0227 +/- 0.0087	Mean: 14.8954 +/- 0.0115
Std Dev: 0.3151 +/- 0.0091	Std Dev: 0.4663 +/- 0.0062	Std Dev: 0.3310 +/- 0.0081



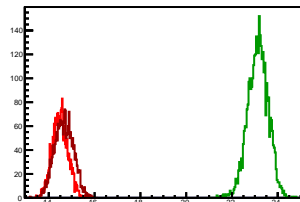
Cycle 10, Sums

Entries: 1578	Entries: 4597	Entries: 2279
Mean: 14.7342 +/- 0.0094	Mean: 22.6788 +/- 0.0066	Mean: 14.2425 +/- 0.0077
Std Dev: 0.3714 +/- 0.0066	Std Dev: 0.4508 +/- 0.0047	Std Dev: 0.3696 +/- 0.0055



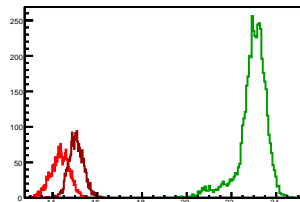
Cycle 11, Sums

Entries: 2218	Entries: 3493	Entries: 2162
Mean: 14.4904 +/- 0.0073	Mean: 23.1347 +/- 0.0076	Mean: 14.6638 +/- 0.0087
Std Dev: 0.3459 +/- 0.0052	Std Dev: 0.4464 +/- 0.0053	Std Dev: 0.4036 +/- 0.0061



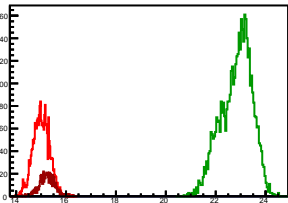
Cycle 12, Sums

Entries: 2170	Entries: 4623	Entries: 2280
Mean: 14.3287 +/- 0.0089	Mean: 22.9519 +/- 0.0097	Mean: 15.0545 +/- 0.0069
Std Dev: 0.4168 +/- 0.0063	Std Dev: 0.6567 +/- 0.0068	Std Dev: 0.3304 +/- 0.0049



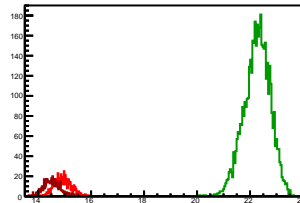
Cycle 13, Sums

Entries: 2250	Entries: 4635	Entries: 581
Mean: 15.0061 +/- 0.0069	Mean: 22.8375 +/- 0.0090	Mean: 15.2284 +/- 0.0129
Std Dev: 0.3266 +/- 0.0049	Std Dev: 0.6155 +/- 0.0064	Std Dev: 0.3108 +/- 0.0091



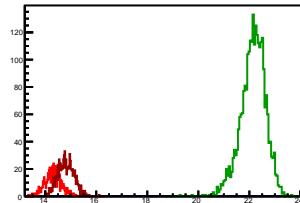
Cycle 14, Sums

Entries: 599	Entries: 4671	Entries: 597
Mean: 14.9218 +/- 0.0128	Mean: 22.2636 +/- 0.0072	Mean: 14.5176 +/- 0.0124
Std Dev: 0.3136 +/- 0.0091	Std Dev: 0.4927 +/- 0.0051	Std Dev: 0.3039 +/- 0.0088



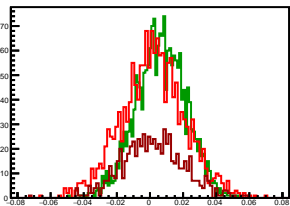
Cycle 15, Sums

Entries: 623	Entries: 2638	Entries: 850
Mean: 14.3051 +/- 0.0130	Mean: 22.1479 +/- 0.0093	Mean: 14.8074 +/- 0.0107
Std Dev: 0.3244 +/- 0.0092	Std Dev: 0.4796 +/- 0.0068	Std Dev: 0.3124 +/- 0.0076



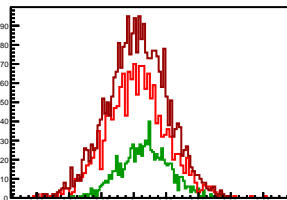
Cycle 1, Asyms

Entries: 1653	Entries: 2031	Entries: 692
Mean: 0.0018 +/- 0.0005	Mean: 0.0065 +/- 0.0003	Mean: 0.0020 +/- 0.0007
Std Dev: 0.0193 +/- 0.0003	Std Dev: 0.0150 +/- 0.0002	Std Dev: 0.0185 +/- 0.0005



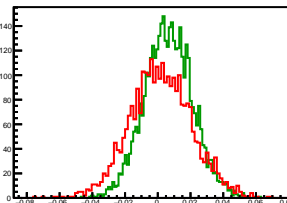
Cycle 2, Asyms

Entries: 1656	Entries: 918	Entries: 2859
Mean: 0.0017 +/- 0.0005	Mean: 0.0070 +/- 0.0005	Mean: 0.0024 +/- 0.0003
Std Dev: 0.0187 +/- 0.0003	Std Dev: 0.0154 +/- 0.0004	Std Dev: 0.0186 +/- 0.0002



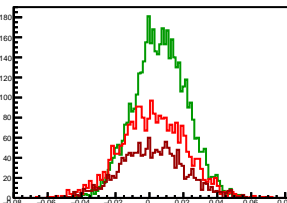
Cycle 3, Asyms

Entries: 2895	Entries: 3984	Entries: 0
Mean: 0.0018 +/- 0.0004	Mean: 0.0065 +/- 0.0002	Mean: 0.0000 +/- 0.0000
Std Dev: 0.0189 +/- 0.0002	Std Dev: 0.0147 +/- 0.0002	Std Dev: 0.0000 +/- 0.0000



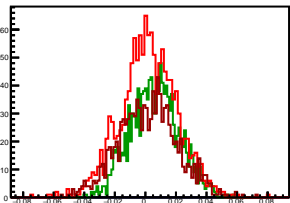
Cycle 4, Asyms

Entries: 2491	Entries: 4649	Entries: 1673
Mean: 0.0019 +/- 0.0004	Mean: 0.0063 +/- 0.0002	Mean: 0.0018 +/- 0.0005
Std Dev: 0.0190 +/- 0.0003	Std Dev: 0.0156 +/- 0.0002	Std Dev: 0.0187 +/- 0.0005



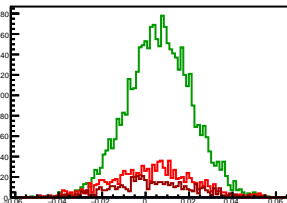
Cycle 5, Asyms

Entries: 1356	Entries: 1314	Entries: 1076
Mean: 0.0020 +/- 0.0005	Mean: 0.0061 +/- 0.0004	Mean: 0.0017 +/- 0.0006
Std Dev: 0.0186 +/- 0.0004	Std Dev: 0.0159 +/- 0.0003	Std Dev: 0.0193 +/- 0.0004



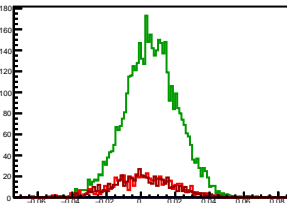
Cycle 6, Asyms

Entries: 1053	Entries: 4688	Entries: 575
Mean: 0.0029 +/- 0.0006	Mean: 0.0064 +/- 0.0002	Mean: 0.0028 +/- 0.0008
Std Dev: 0.0184 +/- 0.0004	Std Dev: 0.0148 +/- 0.0002	Std Dev: 0.0185 +/- 0.0005



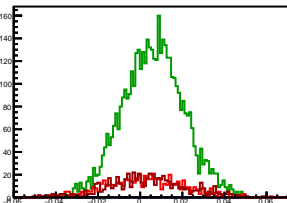
Cycle 7, Asyms

Entries: 573	Entries: 4605	Entries: 578
Mean: 0.0016 +/- 0.0008	Mean: 0.0060 +/- 0.0002	Mean: 0.0007 +/- 0.0008
Std Dev: 0.0189 +/- 0.0006	Std Dev: 0.0154 +/- 0.0002	Std Dev: 0.0181 +/- 0.0005



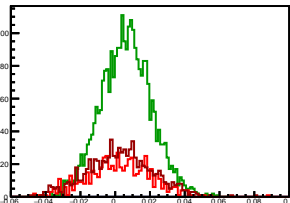
Cycle 8, Asyms

Entries: 581	Entries: 4602	Entries: 595
Mean: 0.0023 +/- 0.0008	Mean: 0.0061 +/- 0.0002	Mean: 0.0031 +/- 0.0008
Std Dev: 0.0187 +/- 0.0005	Std Dev: 0.0145 +/- 0.0002	Std Dev: 0.0189 +/- 0.0005



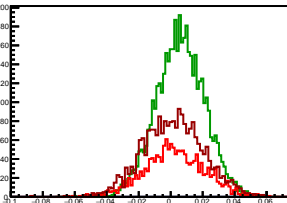
Cycle 9, Asyms

Entries: 594	Entries: 2867	Entries: 828
Mean: 0.0026 +/- 0.0007	Mean: 0.0063 +/- 0.0003	Mean: 0.0028 +/- 0.0007
Std Dev: 0.0183 +/- 0.0005	Std Dev: 0.0147 +/- 0.0002	Std Dev: 0.0188 +/- 0.0005



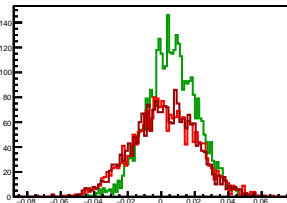
Cycle 10, Asyms

Entries: 1578	Entries: 4597	Entries: 2279
Mean: 0.0024 +/- 0.0005	Mean: 0.0060 +/- 0.0002	Mean: 0.0016 +/- 0.0004
Std Dev: 0.0189 +/- 0.0003	Std Dev: 0.0151 +/- 0.0002	Std Dev: 0.0190 +/- 0.0003



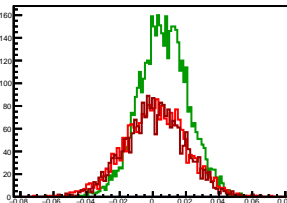
Cycle 11, Asyms

Entries: 2218	Entries: 3493	Entries: 2162
Mean: 0.0021 +/- 0.0004	Mean: 0.0063 +/- 0.0003	Mean: 0.0015 +/- 0.0004
Std Dev: 0.0194 +/- 0.0003	Std Dev: 0.0151 +/- 0.0002	Std Dev: 0.0190 +/- 0.0003



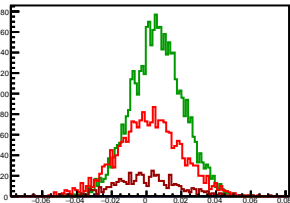
Cycle 12, Asyms

Entries: 2170	Entries: 4623	Entries: 2280
Mean: 0.0015 +/- 0.0004	Mean: 0.0065 +/- 0.0002	Mean: 0.0013 +/- 0.0004
Std Dev: 0.0187 +/- 0.0003	Std Dev: 0.0149 +/- 0.0002	Std Dev: 0.0181 +/- 0.0003



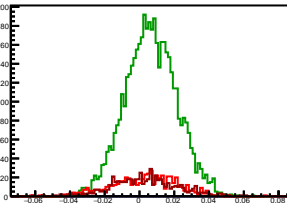
Cycle 13, Asyms

Entries: 2250	Entries: 4635	Entries: 581
Mean: 0.0017 +/- 0.0004	Mean: 0.0061 +/- 0.0002	Mean: 0.0003 +/- 0.0008
Std Dev: 0.0185 +/- 0.0003	Std Dev: 0.0149 +/- 0.0002	Std Dev: 0.0184 +/- 0.0005



Cycle 14, Asyms

Entries: 599	Entries: 4671	Entries: 597
Mean: 0.0024 +/- 0.0008	Mean: 0.0065 +/- 0.0002	Mean: 0.0028 +/- 0.0008
Std Dev: 0.0192 +/- 0.0006	Std Dev: 0.0148 +/- 0.0002	Std Dev: 0.0188 +/- 0.0005



Cycle 15, Asyms

Entries: 623	Entries: 2638	Entries: 850
Mean: 0.0013 +/- 0.0008	Mean: 0.0061 +/- 0.0003	Mean: 0.0013 +/- 0.0006
Std Dev: 0.0193 +/- 0.0005	Std Dev: 0.0157 +/- 0.0002	Std Dev: 0.0181 +/- 0.0004

