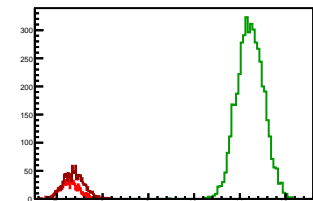


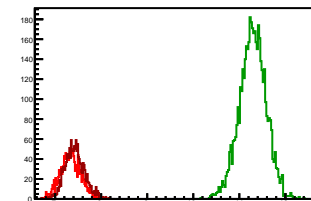
Cycle 1, PosHel

Entries: 1025	Entries: 4579	Entries: 1524
Mean: 7.2621 +/- 0.0064	Mean: 11.2272 +/- 0.0043	Mean: 7.3701 +/- 0.0058
Std Dev: 0.2037 +/- 0.0045	Std Dev: 0.2939 +/- 0.0031	Std Dev: 0.2266 +/- 0.0041



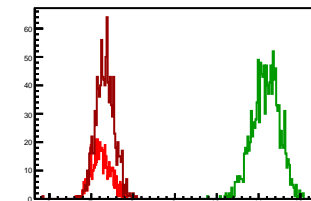
Cycle 2, PosHel

Entries: 1533	Entries: 4626	Entries: 1526
Mean: 7.3345 +/- 0.0056	Mean: 11.2918 +/- 0.0043	Mean: 7.4265 +/- 0.0054
Std Dev: 0.2199 +/- 0.0040	Std Dev: 0.2892 +/- 0.0030	Std Dev: 0.2121 +/- 0.0038



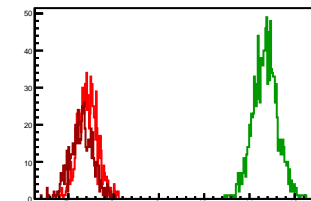
Cycle 3, PosHel

Entries: 639	Entries: 1315	Entries: 1011
Mean: 7.2430 +/- 0.0089	Mean: 11.1771 +/- 0.0089	Mean: 7.3319 +/- 0.0071
Std Dev: 0.2251 +/- 0.0063	Std Dev: 0.3219 +/- 0.0063	Std Dev: 0.2249 +/- 0.0050



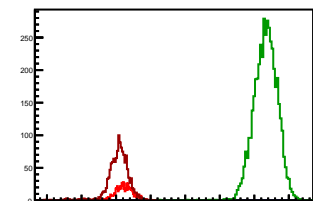
Cycle 4, PosHel

Entries: 1011	Entries: 1272	Entries: 647
Mean: 7.4303 +/- 0.0069	Mean: 11.3497 +/- 0.0075	Mean: 7.2934 +/- 0.0100
Std Dev: 0.2179 +/- 0.0048	Std Dev: 0.2678 +/- 0.0053	Std Dev: 0.2549 +/- 0.0071



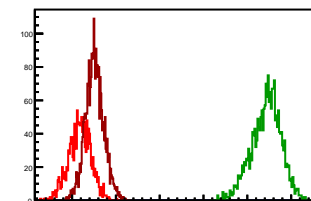
Cycle 5, PosHel

Entries: 631	Entries: 4584	Entries: 1388
Mean: 7.2228 +/- 0.0103	Mean: 11.3271 +/- 0.0049	Mean: 7.0681 +/- 0.0084
Std Dev: 0.2583 +/- 0.0073	Std Dev: 0.3345 +/- 0.0035	Std Dev: 0.3146 +/- 0.0060



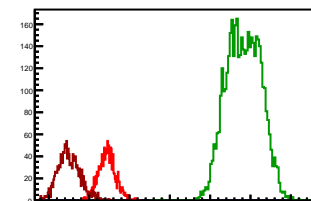
Cycle 6, PosHel

Entries: 1415	Entries: 2135	Entries: 2697
Mean: 7.1742 +/- 0.0067	Mean: 11.4315 +/- 0.0073	Mean: 7.5136 +/- 0.0041
Std Dev: 0.2528 +/- 0.0048	Std Dev: 0.3356 +/- 0.0051	Std Dev: 0.2108 +/- 0.0029



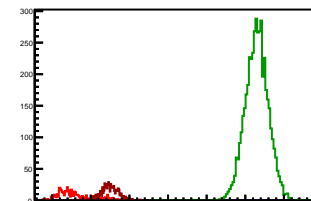
Cycle 7, PosHel

Entries: 1476	Entries: 4531	Entries: 1472
Mean: 7.4413 +/- 0.0055	Mean: 10.8296 +/- 0.0063	Mean: 6.4981 +/- 0.0072
Std Dev: 0.2129 +/- 0.0039	Std Dev: 0.4210 +/- 0.0044	Std Dev: 0.2761 +/- 0.0051



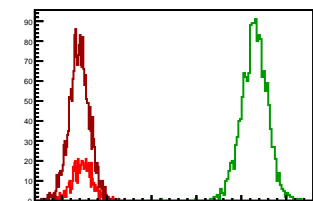
Cycle 8, PosHel

Entries: 446	Entries: 4619	Entries: 642
Mean: 6.5805 +/- 0.0217	Mean: 11.2943 +/- 0.0044	Mean: 7.4963 +/- 0.0067
Std Dev: 0.4589 +/- 0.0154	Std Dev: 0.2986 +/- 0.0031	Std Dev: 0.2204 +/- 0.0062



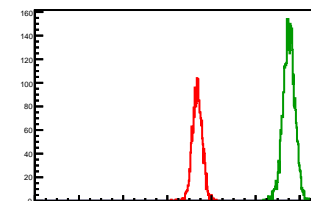
Cycle 9, PosHel

Entries: 646	Entries: 1617	Entries: 2111
Mean: 7.4619 +/- 0.0067	Mean: 11.2898 +/- 0.0073	Mean: 7.3896 +/- 0.0050
Std Dev: 0.2223 +/- 0.0062	Std Dev: 0.2940 +/- 0.0052	Std Dev: 0.2293 +/- 0.0035



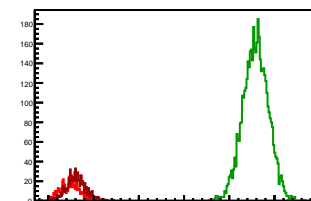
Cycle 10, PosHel

Entries: 2155	Entries: 3936	Entries: 0
Mean: 7.3623 +/- 0.0048	Mean: 11.5057 +/- 0.0044	Mean: 0.0000 +/- 0.0000
Std Dev: 0.2234 +/- 0.0034	Std Dev: 0.2756 +/- 0.0031	Std Dev: 0.0000 +/- 0.0000



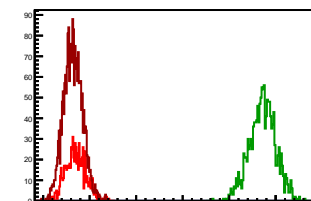
Cycle 11, PosHel

Entries: 609	Entries: 4639	Entries: 788
Mean: 7.4864 +/- 0.0092	Mean: 11.5810 +/- 0.0041	Mean: 7.6162 +/- 0.0075
Std Dev: 0.2274 +/- 0.0065	Std Dev: 0.2795 +/- 0.0029	Std Dev: 0.2109 +/- 0.0053



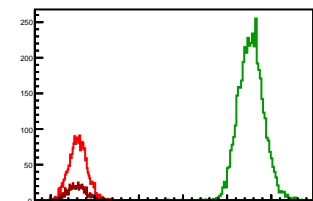
Cycle 12, PosHel

Entries: 770	Entries: 1441	Entries: 2250
Mean: 7.7040 +/- 0.0079	Mean: 11.7163 +/- 0.0074	Mean: 7.6409 +/- 0.0043
Std Dev: 0.2202 +/- 0.0056	Std Dev: 0.2815 +/- 0.0052	Std Dev: 0.2022 +/- 0.0030



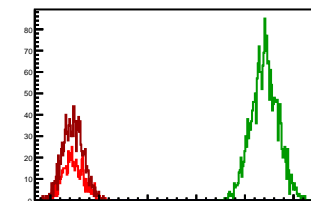
Cycle 13, PosHel

Entries: 2298	Entries: 4584	Entries: 732
Mean: 7.6183 +/- 0.0043	Mean: 11.5431 +/- 0.0042	Mean: 7.5994 +/- 0.0078
Std Dev: 0.2077 +/- 0.0031	Std Dev: 0.2843 +/- 0.0030	Std Dev: 0.2106 +/- 0.0055



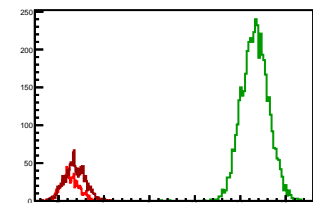
Cycle 14, PosHel

Entries: 698	Entries: 2293	Entries: 1295
Mean: 7.4694 +/- 0.0082	Mean: 11.4061 +/- 0.0057	Mean: 7.4667 +/- 0.0059
Std Dev: 0.2155 +/- 0.0058	Std Dev: 0.2740 +/- 0.0040	Std Dev: 0.2109 +/- 0.0041



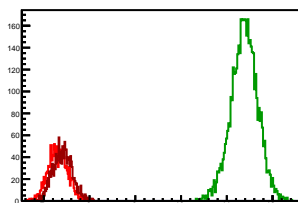
Cycle 1, NegHel

Entries: 1025	Entries: 4579	Entries: 1524
Mean: 7.2546 +/- 0.0062	Mean: 11.3241 +/- 0.0044	Mean: 7.3608 +/- 0.0058
Std Dev: 0.1981 +/- 0.0044	Std Dev: 0.2962 +/- 0.0031	Std Dev: 0.2284 +/- 0.0041



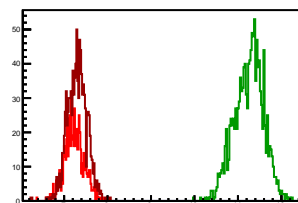
Cycle 2, NegHel

Entries: 1533	Entries: 4626	Entries: 1526
Mean: 7.3065 +/- 0.0056	Mean: 11.3835 +/- 0.0043	Mean: 7.4084 +/- 0.0054
Std Dev: 0.2184 +/- 0.0039	Std Dev: 0.2937 +/- 0.0031	Std Dev: 0.2108 +/- 0.0038



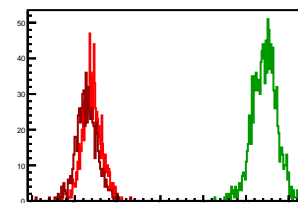
Cycle 3, NegHel

Entries: 639	Entries: 1315	Entries: 1011
Mean: 7.2318 +/- 0.0068	Mean: 11.2537 +/- 0.0092	Mean: 7.3038 +/- 0.0071
Std Dev: 0.2235 +/- 0.0063	Std Dev: 0.3330 +/- 0.0065	Std Dev: 0.2250 +/- 0.0050



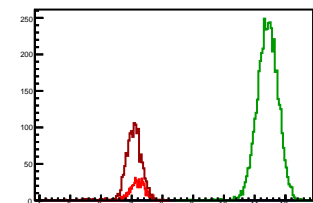
Cycle 4, NegHel

Entries: 1011	Entries: 1272	Entries: 647
Mean: 7.4075 +/- 0.0068	Mean: 11.4358 +/- 0.0078	Mean: 7.2785 +/- 0.0099
Std Dev: 0.2165 +/- 0.0048	Std Dev: 0.2786 +/- 0.0055	Std Dev: 0.2521 +/- 0.0070



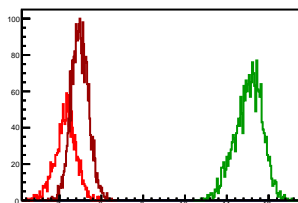
Cycle 5, NegHel

Entries: 631	Entries: 4584	Entries: 1388
Mean: 7.1897 +/- 0.0098	Mean: 11.4181 +/- 0.0050	Mean: 7.0543 +/- 0.0081
Std Dev: 0.2451 +/- 0.0069	Std Dev: 0.3400 +/- 0.0036	Std Dev: 0.3028 +/- 0.0057



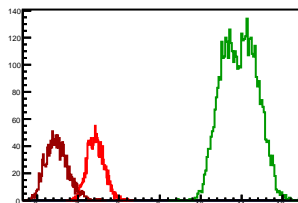
Cycle 6, NegHel

Entries: 1415	Entries: 2135	Entries: 2697
Mean: 7.1466 +/- 0.0067	Mean: 11.5188 +/- 0.0072	Mean: 7.4876 +/- 0.0040
Std Dev: 0.2512 +/- 0.0047	Std Dev: 0.3341 +/- 0.0051	Std Dev: 0.2089 +/- 0.0028



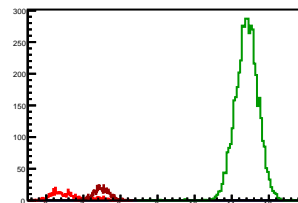
Cycle 7, NegHel

Entries: 1476	Entries: 4531	Entries: 1472
Mean: 7.4341 +/- 0.0055	Mean: 10.9428 +/- 0.0063	Mean: 6.4850 +/- 0.0071
Std Dev: 0.2099 +/- 0.0039	Std Dev: 0.4260 +/- 0.0045	Std Dev: 0.2721 +/- 0.0050



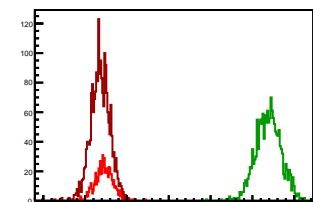
Cycle 8, NegHel

Entries: 446	Entries: 4619	Entries: 642
Mean: 6.5704 +/- 0.0212	Mean: 11.4047 +/- 0.0045	Mean: 7.4816 +/- 0.0086
Std Dev: 0.4479 +/- 0.0150	Std Dev: 0.3052 +/- 0.0032	Std Dev: 0.2184 +/- 0.0061



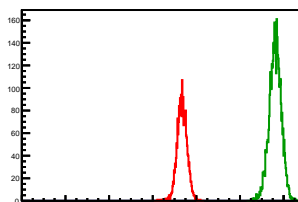
Cycle 9, NegHel

Entries: 646	Entries: 1617	Entries: 2111
Mean: 7.4574 +/- 0.0085	Mean: 11.3835 +/- 0.0075	Mean: 7.3605 +/- 0.0050
Std Dev: 0.2173 +/- 0.0060	Std Dev: 0.3011 +/- 0.0053	Std Dev: 0.2313 +/- 0.0036



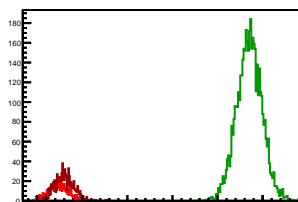
Cycle 10, NegHel

Entries: 2155	Entries: 3936	Entries: 0
Mean: 7.3449 +/- 0.0049	Mean: 11.6119 +/- 0.0045	Mean: 0.0000 +/- 0.0000
Std Dev: 0.2261 +/- 0.0034	Std Dev: 0.2794 +/- 0.0031	Std Dev: 0.0000 +/- 0.0000



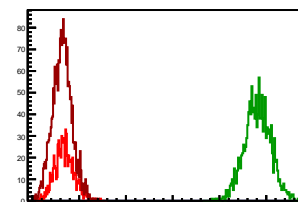
Cycle 11, NegHel

Entries: 609	Entries: 4639	Entries: 788
Mean: 7.4635 +/- 0.0089	Mean: 11.7017 +/- 0.0041	Mean: 7.6050 +/- 0.0074
Std Dev: 0.2195 +/- 0.0063	Std Dev: 0.2805 +/- 0.0029	Std Dev: 0.2085 +/- 0.0053



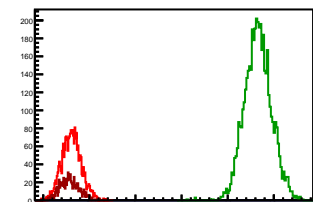
Cycle 12, NegHel

Entries: 770	Entries: 1441	Entries: 2250
Mean: 7.6868 +/- 0.0076	Mean: 11.8159 +/- 0.0074	Mean: 7.6355 +/- 0.0044
Std Dev: 0.2100 +/- 0.0054	Std Dev: 0.2824 +/- 0.0053	Std Dev: 0.2076 +/- 0.0031



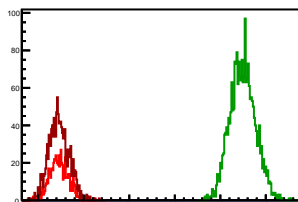
Cycle 13, NegHel

Entries: 2298	Entries: 4584	Entries: 732
Mean: 7.6130 +/- 0.0044	Mean: 11.6566 +/- 0.0043	Mean: 7.5712 +/- 0.0078
Std Dev: 0.2112 +/- 0.0031	Std Dev: 0.2904 +/- 0.0030	Std Dev: 0.2097 +/- 0.0055



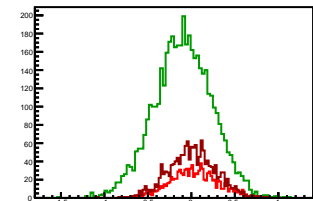
Cycle 14, NegHel

Entries: 698	Entries: 2293	Entries: 1295
Mean: 7.4570 +/- 0.0079	Mean: 11.4911 +/- 0.0059	Mean: 7.4546 +/- 0.0062
Std Dev: 0.2097 +/- 0.0056	Std Dev: 0.2803 +/- 0.0041	Std Dev: 0.2219 +/- 0.0044



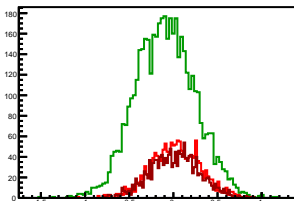
Cycle 1, Diffs

Entries: 1025	Entries: 4579	Entries: 1524
Mean: 0.0275 +/- 0.0064	Mean: -0.0970 +/- 0.0049	Mean: 0.0093 +/- 0.0069
Std Dev: 0.2699 +/- 0.0060	Std Dev: 0.3336 +/- 0.0035	Std Dev: 0.2707 +/- 0.0049



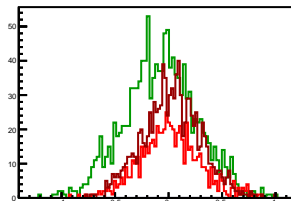
Cycle 2, Diffs

Entries: 1533	Entries: 4626	Entries: 1526
Mean: 0.0280 +/- 0.0070	Mean: -0.0917 +/- 0.0049	Mean: 0.0181 +/- 0.0071
Std Dev: 0.2752 +/- 0.0050	Std Dev: 0.3362 +/- 0.0035	Std Dev: 0.2783 +/- 0.0050



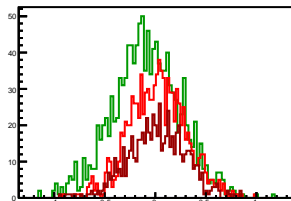
Cycle 3, Diffs

Entries: 639	Entries: 1315	Entries: 1011
Mean: 0.0112 +/- 0.0113	Mean: -0.0766 +/- 0.0093	Mean: 0.0281 +/- 0.0085
Std Dev: 0.2847 +/- 0.0080	Std Dev: 0.3370 +/- 0.0066	Std Dev: 0.2709 +/- 0.0060



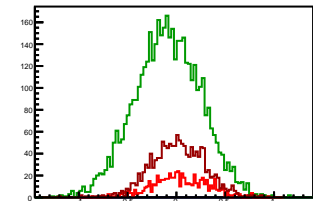
Cycle 4, Diffs

Entries: 1011	Entries: 1272	Entries: 647
Mean: 0.0228 +/- 0.0088	Mean: -0.0861 +/- 0.0095	Mean: 0.0150 +/- 0.0111
Std Dev: 0.2784 +/- 0.0062	Std Dev: 0.3379 +/- 0.0067	Std Dev: 0.2820 +/- 0.0078



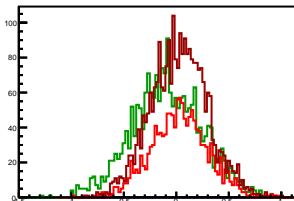
Cycle 5, Diffs

Entries: 631	Entries: 4584	Entries: 1388
Mean: 0.0332 +/- 0.0116	Mean: -0.0910 +/- 0.0050	Mean: 0.0138 +/- 0.0073
Std Dev: 0.2906 +/- 0.0082	Std Dev: 0.3392 +/- 0.0035	Std Dev: 0.2721 +/- 0.0052



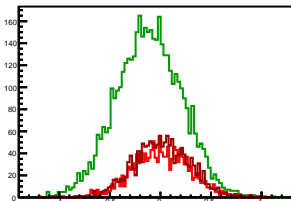
Cycle 6, Diffs

Entries: 1415	Entries: 2135	Entries: 2697
Mean: 0.0276 +/- 0.0073	Mean: -0.0874 +/- 0.0073	Mean: 0.0260 +/- 0.0052
Std Dev: 0.2732 +/- 0.0051	Std Dev: 0.3355 +/- 0.0051	Std Dev: 0.2721 +/- 0.0037



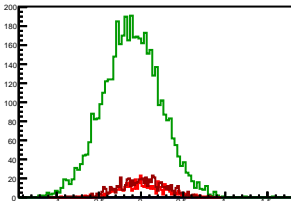
Cycle 7, Diffs

Entries: 1476	Entries: 4531	Entries: 1472
Mean: 0.0073 +/- 0.0073	Mean: -0.1130 +/- 0.0048	Mean: 0.0131 +/- 0.0072
Std Dev: 0.2796 +/- 0.0051	Std Dev: 0.3240 +/- 0.0034	Std Dev: 0.2772 +/- 0.0051



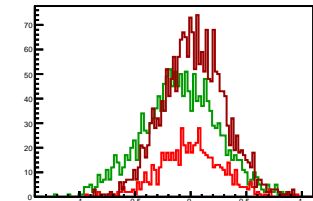
Cycle 8, Diffs

Entries: 446	Entries: 4619	Entries: 642
Mean: 0.0101 +/- 0.0130	Mean: -0.1104 +/- 0.0050	Mean: 0.0147 +/- 0.0111
Std Dev: 0.2747 +/- 0.0092	Std Dev: 0.3408 +/- 0.0035	Std Dev: 0.2818 +/- 0.0079



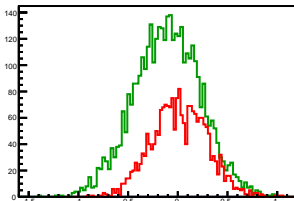
Cycle 9, Diffs

Entries: 646	Entries: 1617	Entries: 2111
Mean: 0.0045 +/- 0.0110	Mean: -0.0937 +/- 0.0085	Mean: 0.0291 +/- 0.0060
Std Dev: 0.2799 +/- 0.0078	Std Dev: 0.3403 +/- 0.0060	Std Dev: 0.2769 +/- 0.0043



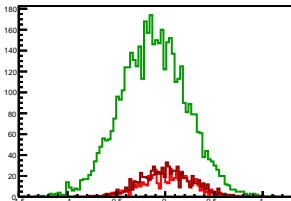
Cycle 10, Diffs

Entries: 2155	Entries: 3936	Entries: 0
Mean: 0.0173 +/- 0.0060	Mean: -0.1061 +/- 0.0053	Mean: 0.0000 +/- 0.0000
Std Dev: 0.2777 +/- 0.0042	Std Dev: 0.3349 +/- 0.0038	Std Dev: 0.0000 +/- 0.0000



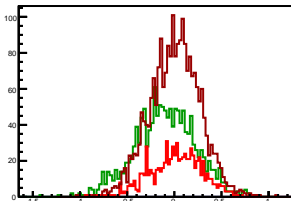
Cycle 11, Diffs

Entries: 609	Entries: 4639	Entries: 788
Mean: 0.0229 +/- 0.0108	Mean: -0.1207 +/- 0.0050	Mean: 0.0112 +/- 0.0096
Std Dev: 0.2655 +/- 0.0076	Std Dev: 0.3388 +/- 0.0035	Std Dev: 0.2703 +/- 0.0068



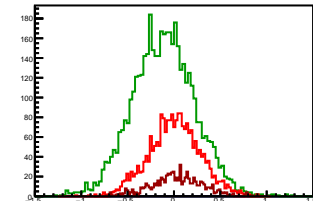
Cycle 12, Diffs

Entries: 770	Entries: 1441	Entries: 2250
Mean: 0.0171 +/- 0.0100	Mean: -0.0996 +/- 0.0086	Mean: 0.0054 +/- 0.0056
Std Dev: 0.2782 +/- 0.0071	Std Dev: 0.3277 +/- 0.0061	Std Dev: 0.2658 +/- 0.0040



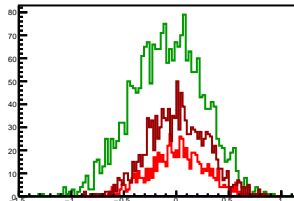
Cycle 13, Diffs

Entries: 2298	Entries: 4584	Entries: 732
Mean: 0.0053 +/- 0.0058	Mean: -0.1135 +/- 0.0050	Mean: 0.0281 +/- 0.0102
Std Dev: 0.2769 +/- 0.0041	Std Dev: 0.3368 +/- 0.0035	Std Dev: 0.2747 +/- 0.0072



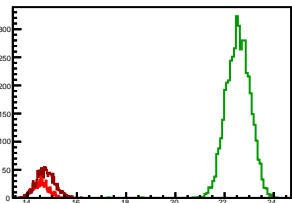
Cycle 14, Diffs

Entries: 698	Entries: 2293	Entries: 1295
Mean: 0.0124 +/- 0.0099	Mean: -0.0850 +/- 0.0071	Mean: 0.0121 +/- 0.0077
Std Dev: 0.2613 +/- 0.0070	Std Dev: 0.3390 +/- 0.0050	Std Dev: 0.2779 +/- 0.0055



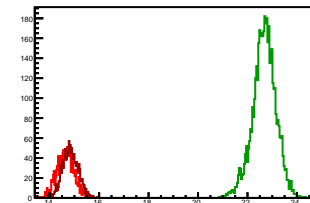
Cycle 1, Sums

Entries: 1025	Entries: 4579	Entries: 1524
Mean: 14.5367 +/- 0.0093	Mean: 22.5513 +/- 0.0072	Mean: 14.7309 +/- 0.0094
Std Dev: 0.2977 +/- 0.0066	Std Dev: 0.4868 +/- 0.0051	Std Dev: 0.3657 +/- 0.0066



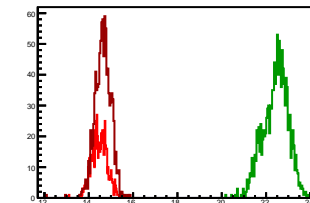
Cycle 2, Sums

Entries: 1533	Entries: 4626	Entries: 1526
Mean: 14.6411 +/- 0.0087	Mean: 22.6753 +/- 0.0070	Mean: 14.8348 +/- 0.0082
Std Dev: 0.3411 +/- 0.0062	Std Dev: 0.4761 +/- 0.0049	Std Dev: 0.3186 +/- 0.0058



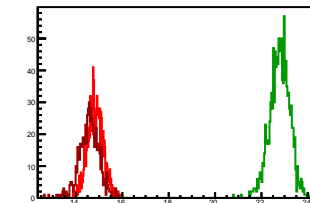
Cycle 3, Sums

Entries: 639	Entries: 1315	Entries: 1011
Mean: 14.4749 +/- 0.0137	Mean: 22.4308 +/- 0.0155	Mean: 14.6357 +/- 0.0113
Std Dev: 0.3467 +/- 0.0097	Std Dev: 0.5617 +/- 0.0110	Std Dev: 0.3591 +/- 0.0080



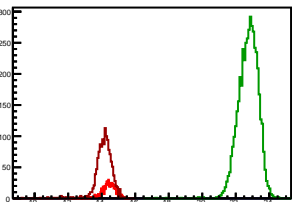
Cycle 4, Sums

Entries: 1011	Entries: 1272	Entries: 647
Mean: 14.8378 +/- 0.0105	Mean: 22.7856 +/- 0.0120	Mean: 14.5719 +/- 0.0166
Std Dev: 0.3335 +/- 0.0074	Std Dev: 0.4296 +/- 0.0085	Std Dev: 0.4213 +/- 0.0117



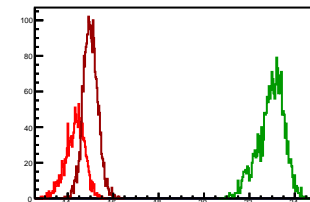
Cycle 5, Sums

Entries: 631	Entries: 4584	Entries: 1388
Mean: 14.4125 +/- 0.0164	Mean: 22.7452 +/- 0.0086	Mean: 14.1224 +/- 0.0149
Std Dev: 0.4111 +/- 0.0116	Std Dev: 0.5831 +/- 0.0061	Std Dev: 0.5543 +/- 0.0105



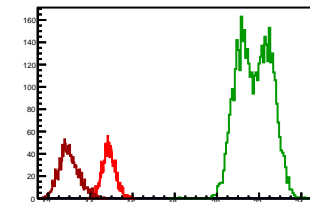
Cycle 6, Sums

Entries: 1415	Entries: 2135	Entries: 2697
Mean: 14.3208 +/- 0.0113	Mean: 22.9503 +/- 0.0125	Mean: 15.0012 +/- 0.0062
Std Dev: 0.4236 +/- 0.0080	Std Dev: 0.5796 +/- 0.0089	Std Dev: 0.3194 +/- 0.0043



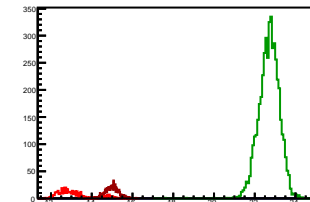
Cycle 7, Sums

Entries: 1476	Entries: 4531	Entries: 1472
Mean: 14.8754 +/- 0.0083	Mean: 21.7726 +/- 0.0116	Mean: 12.9832 +/- 0.0123
Std Dev: 0.3172 +/- 0.0058	Std Dev: 0.7826 +/- 0.0082	Std Dev: 0.4731 +/- 0.0087



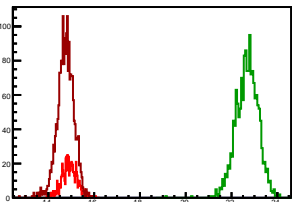
Cycle 8, Sums

Entries: 446	Entries: 4619	Entries: 642
Mean: 13.1509 +/- 0.0409	Mean: 22.6990 +/- 0.0073	Mean: 14.9780 +/- 0.0133
Std Dev: 0.8643 +/- 0.0289	Std Dev: 0.4985 +/- 0.0052	Std Dev: 0.3364 +/- 0.0094



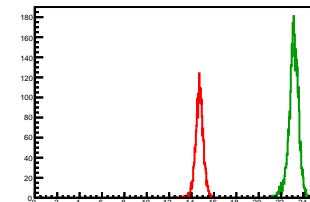
Cycle 9, Sums

Entries: 646	Entries: 1617	Entries: 2111
Mean: 14.9194 +/- 0.0133	Mean: 22.6733 +/- 0.0121	Mean: 14.7501 +/- 0.0080
Std Dev: 0.3390 +/- 0.0094	Std Dev: 0.4882 +/- 0.0086	Std Dev: 0.3681 +/- 0.0057



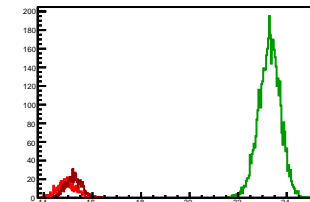
Cycle 10, Sums

Entries: 2155	Entries: 3936	Entries: 0
Mean: 14.7072 +/- 0.0076	Mean: 23.1176 +/- 0.0071	Mean: 0.0000 +/- 0.0000
Std Dev: 0.3535 +/- 0.0054	Std Dev: 0.4426 +/- 0.0050	Std Dev: 0.0000 +/- 0.0000



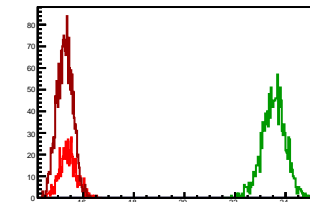
Cycle 11, Sums

Entries: 609	Entries: 4639	Entries: 788
Mean: 14.9500 +/- 0.0146	Mean: 23.2827 +/- 0.0065	Mean: 15.2211 +/- 0.0114
Std Dev: 0.3596 +/- 0.0103	Std Dev: 0.4459 +/- 0.0046	Std Dev: 0.3206 +/- 0.0081



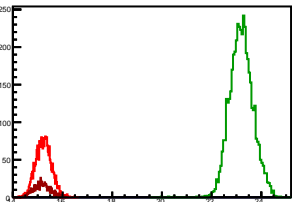
Cycle 12, Sums

Entries: 770	Entries: 1441	Entries: 2250
Mean: 15.3908 +/- 0.0118	Mean: 23.5322 +/- 0.0121	Mean: 15.2764 +/- 0.0066
Std Dev: 0.3283 +/- 0.0084	Std Dev: 0.4589 +/- 0.0085	Std Dev: 0.3120 +/- 0.0047



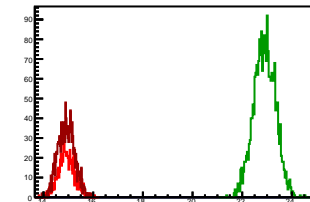
Cycle 13, Sums

Entries: 2298	Entries: 4584	Entries: 732
Mean: 15.2312 +/- 0.0066	Mean: 23.1996 +/- 0.0069	Mean: 15.1706 +/- 0.0118
Std Dev: 0.3143 +/- 0.0046	Std Dev: 0.4657 +/- 0.0049	Std Dev: 0.3181 +/- 0.0083



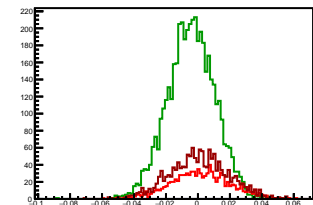
Cycle 14, Sums

Entries: 698	Entries: 2293	Entries: 1295
Mean: 14.9264 +/- 0.0127	Mean: 22.8971 +/- 0.0092	Mean: 14.9213 +/- 0.0092
Std Dev: 0.3355 +/- 0.0090	Std Dev: 0.4386 +/- 0.0065	Std Dev: 0.3320 +/- 0.0065



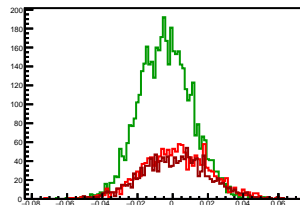
Cycle 1, Asyms

Entries: 1025	Entries: 4579	Entries: 1524
Mean: 0.0019 +/- 0.0006	Mean: -0.0043 +/- 0.0002	Mean: 0.0006 +/- 0.0005
Std Dev: 0.0185 +/- 0.0004	Std Dev: 0.0148 +/- 0.0002	Std Dev: 0.0184 +/- 0.0003



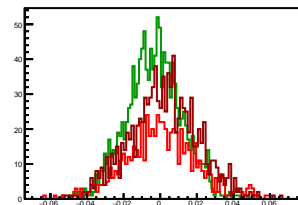
Cycle 2, Asyms

Entries: 1533	Entries: 4626	Entries: 1526
Mean: 0.0019 +/- 0.0005	Mean: -0.0040 +/- 0.0002	Mean: 0.0012 +/- 0.0005
Std Dev: 0.0188 +/- 0.0003	Std Dev: 0.0148 +/- 0.0002	Std Dev: 0.0187 +/- 0.0003



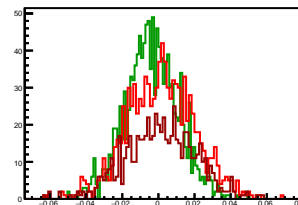
Cycle 3, Asyms

Entries: 639	Entries: 1315	Entries: 1011
Mean: 0.0008 +/- 0.0008	Mean: -0.0034 +/- 0.0004	Mean: 0.0019 +/- 0.0006
Std Dev: 0.0197 +/- 0.0005	Std Dev: 0.0150 +/- 0.0003	Std Dev: 0.0185 +/- 0.0004



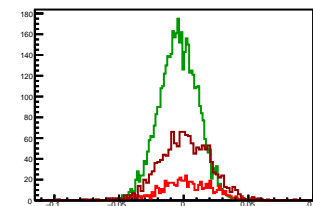
Cycle 4, Asyms

Entries: 1011	Entries: 1272	Entries: 647
Mean: 0.0015 +/- 0.0006	Mean: -0.0038 +/- 0.0004	Mean: 0.0010 +/- 0.0008
Std Dev: 0.0187 +/- 0.0004	Std Dev: 0.0148 +/- 0.0003	Std Dev: 0.0193 +/- 0.0005



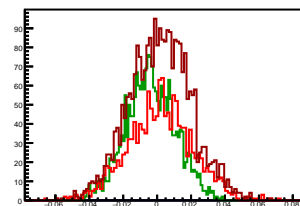
Cycle 5, Asyms

Entries: 631	Entries: 4584	Entries: 1388
Mean: 0.0023 +/- 0.0008	Mean: -0.0040 +/- 0.0002	Mean: 0.0009 +/- 0.0005
Std Dev: 0.0201 +/- 0.0006	Std Dev: 0.0149 +/- 0.0002	Std Dev: 0.0194 +/- 0.0004



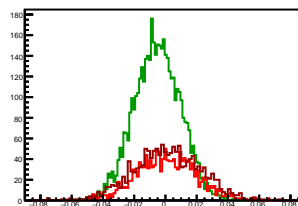
Cycle 6, Asyms

Entries: 1415	Entries: 2135	Entries: 2697
Mean: 0.0019 +/- 0.0005	Mean: -0.0038 +/- 0.0003	Mean: 0.0017 +/- 0.0003
Std Dev: 0.0191 +/- 0.0004	Std Dev: 0.0146 +/- 0.0002	Std Dev: 0.0181 +/- 0.0002



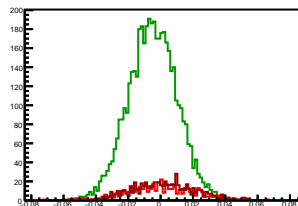
Cycle 7, Asyms

Entries: 1476	Entries: 4531	Entries: 1472
Mean: 0.0005 +/- 0.0005	Mean: -0.0052 +/- 0.0002	Mean: 0.0010 +/- 0.0006
Std Dev: 0.0188 +/- 0.0003	Std Dev: 0.0149 +/- 0.0002	Std Dev: 0.0213 +/- 0.0004



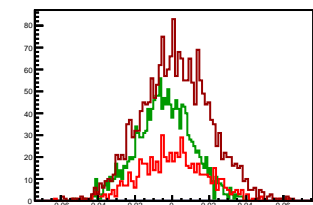
Cycle 8, Asyms

Entries: 446	Entries: 4619	Entries: 642
Mean: 0.0007 +/- 0.0010	Mean: -0.0049 +/- 0.0002	Mean: 0.0010 +/- 0.0007
Std Dev: 0.0210 +/- 0.0007	Std Dev: 0.0150 +/- 0.0002	Std Dev: 0.0188 +/- 0.0005



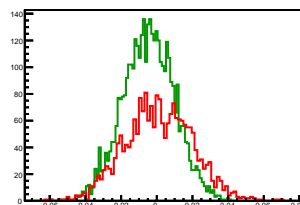
Cycle 9, Asyms

Entries: 646	Entries: 1617	Entries: 2111
Mean: 0.0003 +/- 0.0007	Mean: -0.0041 +/- 0.0004	Mean: 0.0020 +/- 0.0004
Std Dev: 0.0187 +/- 0.0005	Std Dev: 0.0150 +/- 0.0003	Std Dev: 0.0187 +/- 0.0003



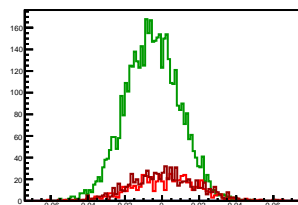
Cycle 10, Asyms

Entries: 2155	Entries: 3936	Entries: 0
Mean: 0.0012 +/- 0.0004	Mean: -0.0046 +/- 0.0002	Mean: 0.0000 +/- 0.0000
Std Dev: 0.0188 +/- 0.0003	Std Dev: 0.0145 +/- 0.0002	Std Dev: 0.0000 +/- 0.0000



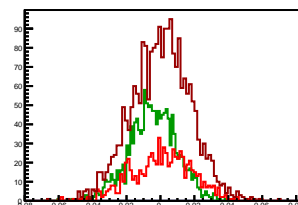
Cycle 11, Asyms

Entries: 609	Entries: 4639	Entries: 788
Mean: 0.0015 +/- 0.0007	Mean: -0.0052 +/- 0.0002	Mean: 0.0007 +/- 0.0006
Std Dev: 0.0177 +/- 0.0005	Std Dev: 0.0145 +/- 0.0002	Std Dev: 0.0177 +/- 0.0004



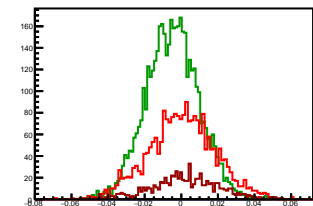
Cycle 12, Asyms

Entries: 770	Entries: 1441	Entries: 2250
Mean: 0.0011 +/- 0.0006	Mean: -0.0042 +/- 0.0004	Mean: 0.0004 +/- 0.0004
Std Dev: 0.0180 +/- 0.0005	Std Dev: 0.0139 +/- 0.0003	Std Dev: 0.0174 +/- 0.0003



Cycle 13, Asyms

Entries: 2298	Entries: 4584	Entries: 732
Mean: 0.0004 +/- 0.0004	Mean: -0.0049 +/- 0.0002	Mean: 0.0019 +/- 0.0007
Std Dev: 0.0182 +/- 0.0003	Std Dev: 0.0145 +/- 0.0002	Std Dev: 0.0180 +/- 0.0005



Cycle 14, Asyms

Entries: 698	Entries: 2293	Entries: 1295
Mean: 0.0008 +/- 0.0007	Mean: -0.0037 +/- 0.0003	Mean: 0.0008 +/- 0.0005
Std Dev: 0.0175 +/- 0.0005	Std Dev: 0.0148 +/- 0.0002	Std Dev: 0.0186 +/- 0.0004

