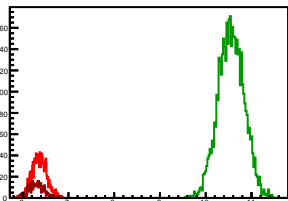


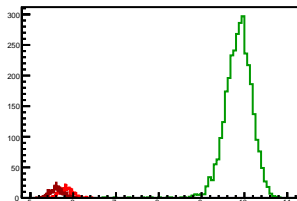
### Cycle 1, PosHel

Entries: 1363	Entries: 4672	Entries: 464
Mean: 6.3629 +/- 0.0044	Mean: 10.5550 +/- 0.0041	Mean: 6.2980 +/- 0.0071
Std Dev: 0.1626 +/- 0.0031	Std Dev: 0.2827 +/- 0.0029	Std Dev: 0.1529 +/- 0.0050



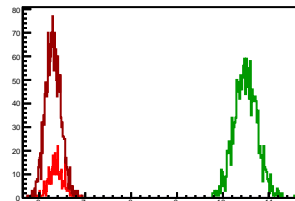
### Cycle 2, PosHel

Entries: 517	Entries: 3213	Entries: 523
Mean: 5.8345 +/- 0.0068	Mean: 9.8537 +/- 0.0060	Mean: 5.6100 +/- 0.0068
Std Dev: 0.1541 +/- 0.0048	Std Dev: 0.3405 +/- 0.0042	Std Dev: 0.1547 +/- 0.0048



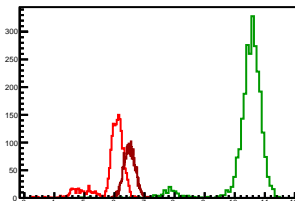
### Cycle 3, PosHel

Entries: 453	Entries: 1590	Entries: 1988
Mean: 6.3723 +/- 0.0075	Mean: 10.4963 +/- 0.0063	Mean: 6.3019 +/- 0.0038
Std Dev: 0.1588 +/- 0.0053	Std Dev: 0.2528 +/- 0.0045	Std Dev: 0.1691 +/- 0.0027



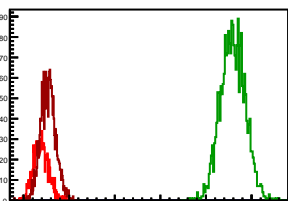
### Cycle 4, PosHel

Entries: 1953	Entries: 2548	Entries: 2963
Mean: 5.8999 +/- 0.0117	Mean: 10.4202 +/- 0.0137	Mean: 6.5027 +/- 0.0035
Std Dev: 0.5190 +/- 0.0083	Std Dev: 0.6923 +/- 0.0097	Std Dev: 0.1896 +/- 0.0025



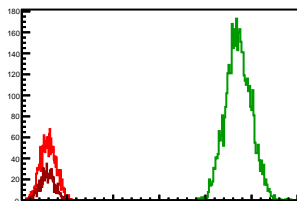
### Cycle 5, PosHel

Entries: 862	Entries: 2362	Entries: 1904
Mean: 6.3801 +/- 0.0058	Mean: 10.5889 +/- 0.0055	Mean: 6.5382 +/- 0.0037
Std Dev: 0.1692 +/- 0.0041	Std Dev: 0.2690 +/- 0.0039	Std Dev: 0.1635 +/- 0.0027



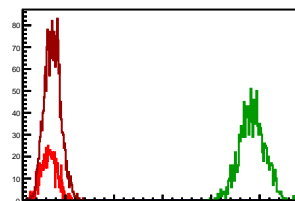
### Cycle 6, PosHel

Entries: 1948	Entries: 4549	Entries: 885
Mean: 6.5951 +/- 0.0038	Mean: 10.7125 +/- 0.0041	Mean: 6.5760 +/- 0.0053
Std Dev: 0.1692 +/- 0.0027	Std Dev: 0.2757 +/- 0.0029	Std Dev: 0.1562 +/- 0.0037



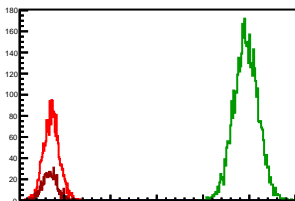
### Cycle 7, PosHel

Entries: 871	Entries: 1329	Entries: 2372
Mean: 6.6664 +/- 0.0055	Mean: 10.8434 +/- 0.0071	Mean: 6.7325 +/- 0.0034
Std Dev: 0.1638 +/- 0.0039	Std Dev: 0.2592 +/- 0.0050	Std Dev: 0.1664 +/- 0.0024



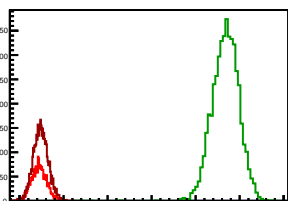
### Cycle 8, PosHel

Entries: 2436	Entries: 4634	Entries: 845
Mean: 6.7270 +/- 0.0034	Mean: 10.9270 +/- 0.0039	Mean: 6.6876 +/- 0.0054
Std Dev: 0.1691 +/- 0.0024	Std Dev: 0.2622 +/- 0.0027	Std Dev: 0.1578 +/- 0.0038



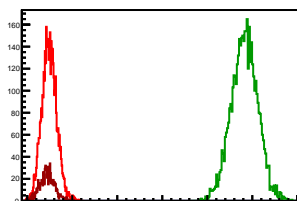
### Cycle 9, PosHel

Entries: 2237	Entries: 4676	Entries: 4178
Mean: 6.4451 +/- 0.0036	Mean: 10.6769 +/- 0.0045	Mean: 6.4819 +/- 0.0026
Std Dev: 0.1716 +/- 0.0026	Std Dev: 0.3105 +/- 0.0032	Std Dev: 0.1671 +/- 0.0018



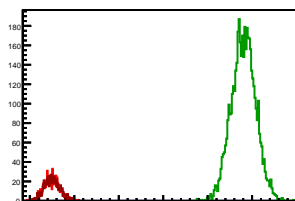
### Cycle 10, PosHel

Entries: 4218	Entries: 4546	Entries: 819
Mean: 6.4891 +/- 0.0026	Mean: 10.8255 +/- 0.0044	Mean: 6.4461 +/- 0.0058
Std Dev: 0.1659 +/- 0.0018	Std Dev: 0.2949 +/- 0.0031	Std Dev: 0.1659 +/- 0.0041



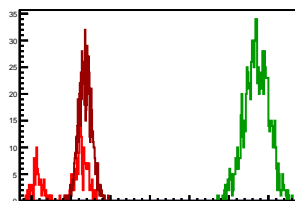
### Cycle 11, PosHel

Entries: 796	Entries: 4607	Entries: 813
Mean: 6.4913 +/- 0.0061	Mean: 10.8072 +/- 0.0040	Mean: 6.4982 +/- 0.0060
Std Dev: 0.1717 +/- 0.0043	Std Dev: 0.2734 +/- 0.0028	Std Dev: 0.1706 +/- 0.0042



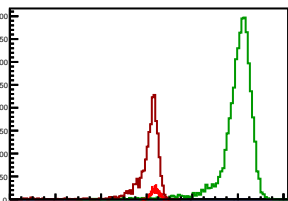
### Cycle 12, PosHel

Entries: 248	Entries: 977	Entries: 774
Mean: 5.9155 +/- 0.0342	Mean: 10.7016 +/- 0.0099	Mean: 6.3627 +/- 0.0059
Std Dev: 0.5386 +/- 0.0242	Std Dev: 0.3096 +/- 0.0070	Std Dev: 0.1651 +/- 0.0042



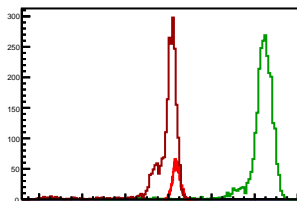
### Cycle 13, PosHel

Entries: 766	Entries: 4574	Entries: 1934
Mean: 6.3795 +/- 0.0064	Mean: 9.9683 +/- 0.0109	Mean: 6.0469 +/- 0.0157
Std Dev: 0.1784 +/- 0.0046	Std Dev: 0.7396 +/- 0.0077	Std Dev: 0.6905 +/- 0.0111



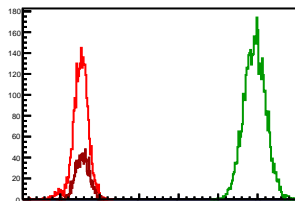
### Cycle 14, PosHel

Entries: 1926	Entries: 2617	Entries: 2323
Mean: 6.3733 +/- 0.0039	Mean: 10.3146 +/- 0.0146	Mean: 5.8363 +/- 0.0190
Std Dev: 0.1708 +/- 0.0028	Std Dev: 0.7480 +/- 0.0103	Std Dev: 0.9176 +/- 0.0135



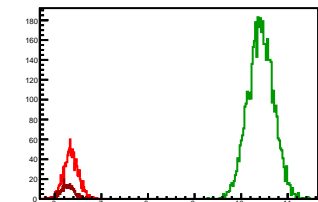
### Cycle 15, PosHel

Entries: 2661	Entries: 4568	Entries: 1343
Mean: 6.5149 +/- 0.0039	Mean: 10.9295 +/- 0.0041	Mean: 6.5624 +/- 0.0047
Std Dev: 0.2020 +/- 0.0028	Std Dev: 0.2754 +/- 0.0029	Std Dev: 0.1717 +/- 0.0033



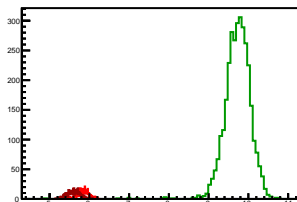
### Cycle 1, NegHel

Entries: 1363	Entries: 4672	Entries: 464
Mean: 6.3540 +/- 0.0043	Mean: 10.4193 +/- 0.0040	Mean: 6.2750 +/- 0.0067
Std Dev: 0.1571 +/- 0.0030	Std Dev: 0.2761 +/- 0.0029	Std Dev: 0.1451 +/- 0.0048



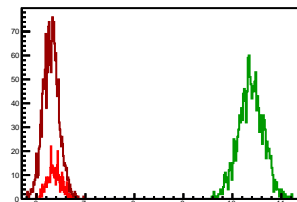
### Cycle 2, NegHel

Entries: 517	Entries: 3213	Entries: 523
Mean: 5.8280 +/- 0.0066	Mean: 9.7266 +/- 0.0059	Mean: 5.6029 +/- 0.0072
Std Dev: 0.1499 +/- 0.0047	Std Dev: 0.3334 +/- 0.0042	Std Dev: 0.1652 +/- 0.0051



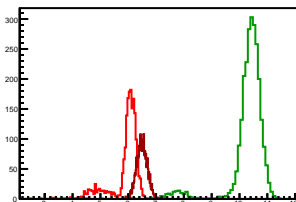
### Cycle 3, NegHel

Entries: 453	Entries: 1590	Entries: 1988
Mean: 6.3673 +/- 0.0069	Mean: 10.3786 +/- 0.0064	Mean: 6.2977 +/- 0.0037
Std Dev: 0.1470 +/- 0.0049	Std Dev: 0.2551 +/- 0.0045	Std Dev: 0.1636 +/- 0.0026



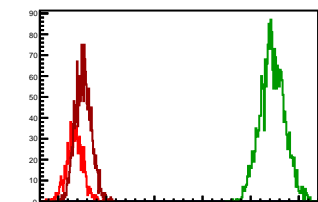
### Cycle 4, NegHel

Entries: 1953	Entries: 2548	Entries: 2963
Mean: 5.8944 +/- 0.0119	Mean: 10.2943 +/- 0.0136	Mean: 6.4952 +/- 0.0035
Std Dev: 0.5252 +/- 0.0084	Std Dev: 0.6864 +/- 0.0096	Std Dev: 0.1986 +/- 0.0025



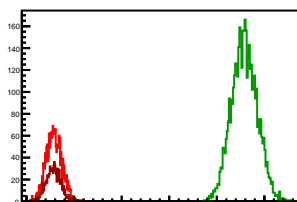
### Cycle 5, NegHel

Entries: 862	Entries: 2362	Entries: 1904
Mean: 6.3476 +/- 0.0059	Mean: 10.4521 +/- 0.0053	Mean: 6.5205 +/- 0.0038
Std Dev: 0.1730 +/- 0.0042	Std Dev: 0.2569 +/- 0.0037	Std Dev: 0.1665 +/- 0.0027



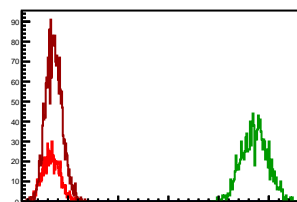
### Cycle 6, NegHel

Entries: 1948	Entries: 4549	Entries: 885
Mean: 6.5750 +/- 0.0037	Mean: 10.5790 +/- 0.0040	Mean: 6.5634 +/- 0.0052
Std Dev: 0.1636 +/- 0.0026	Std Dev: 0.2691 +/- 0.0028	Std Dev: 0.1552 +/- 0.0037



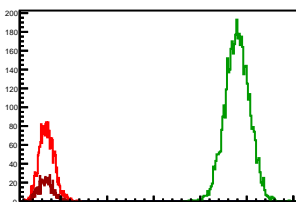
### Cycle 7, NegHel

Entries: 871	Entries: 1329	Entries: 2372
Mean: 6.6664 +/- 0.0057	Mean: 10.7188 +/- 0.0070	Mean: 6.7191 +/- 0.0034
Std Dev: 0.1688 +/- 0.0040	Std Dev: 0.2564 +/- 0.0050	Std Dev: 0.1636 +/- 0.0024



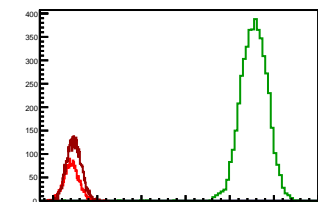
### Cycle 8, NegHel

Entries: 2436	Entries: 4634	Entries: 845
Mean: 6.7018 +/- 0.0033	Mean: 10.7955 +/- 0.0038	Mean: 6.6783 +/- 0.0052
Std Dev: 0.1642 +/- 0.0024	Std Dev: 0.2608 +/- 0.0027	Std Dev: 0.1525 +/- 0.0037



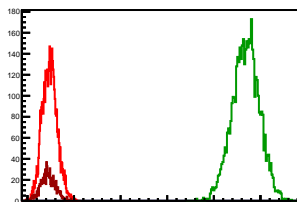
### Cycle 9, NegHel

Entries: 2237	Entries: 4676	Entries: 4178
Mean: 6.4186 +/- 0.0036	Mean: 10.5478 +/- 0.0046	Mean: 6.4707 +/- 0.0026
Std Dev: 0.1722 +/- 0.0026	Std Dev: 0.3115 +/- 0.0032	Std Dev: 0.1673 +/- 0.0018



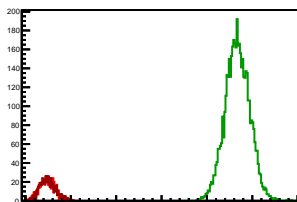
### Cycle 10, NegHel

Entries: 4218	Entries: 4546	Entries: 819
Mean: 6.4784 +/- 0.0025	Mean: 10.6874 +/- 0.0043	Mean: 6.4426 +/- 0.0055
Std Dev: 0.1602 +/- 0.0017	Std Dev: 0.2925 +/- 0.0031	Std Dev: 0.1581 +/- 0.0039



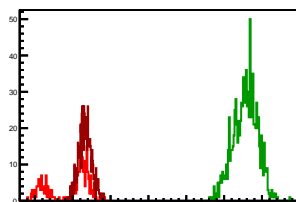
### Cycle 11, NegHel

Entries: 796	Entries: 4607	Entries: 813
Mean: 6.4754 +/- 0.0059	Mean: 10.6710 +/- 0.0040	Mean: 6.4909 +/- 0.0061
Std Dev: 0.1655 +/- 0.0041	Std Dev: 0.2683 +/- 0.0028	Std Dev: 0.1727 +/- 0.0043



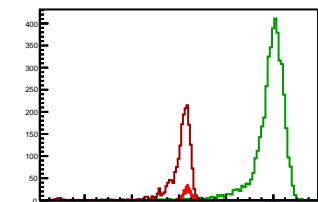
### Cycle 12, NegHel

Entries: 248	Entries: 977	Entries: 774
Mean: 5.9415 +/- 0.0339	Mean: 10.5637 +/- 0.0102	Mean: 6.3309 +/- 0.0060
Std Dev: 0.5333 +/- 0.0239	Std Dev: 0.3193 +/- 0.0072	Std Dev: 0.1677 +/- 0.0043



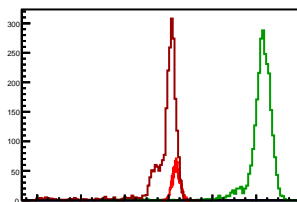
### Cycle 13, NegHel

Entries: 766	Entries: 4574	Entries: 1934
Mean: 6.3504 +/- 0.0060	Mean: 9.8300 +/- 0.0110	Mean: 6.0243 +/- 0.0156
Std Dev: 0.1653 +/- 0.0042	Std Dev: 0.7426 +/- 0.0078	Std Dev: 0.6877 +/- 0.0111



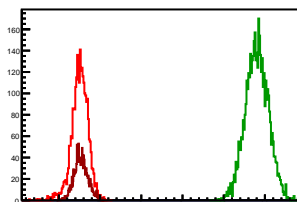
### Cycle 14, NegHel

Entries: 1926	Entries: 2617	Entries: 2323
Mean: 6.3452 +/- 0.0039	Mean: 10.1788 +/- 0.0145	Mean: 5.8049 +/- 0.0191
Std Dev: 0.1694 +/- 0.0027	Std Dev: 0.7451 +/- 0.0103	Std Dev: 0.9188 +/- 0.0135



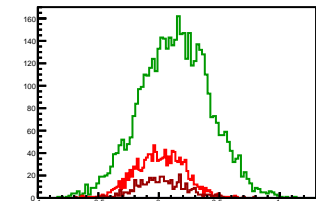
### Cycle 15, NegHel

Entries: 2661	Entries: 4568	Entries: 1343
Mean: 6.5074 +/- 0.0039	Mean: 10.8037 +/- 0.0041	Mean: 6.5386 +/- 0.0046
Std Dev: 0.2019 +/- 0.0028	Std Dev: 0.2780 +/- 0.0029	Std Dev: 0.1695 +/- 0.0033



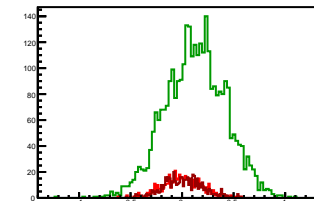
### Cycle 1, Diffs

Entries: 1363	Entries: 4672	Entries: 464
Mean: 0.0089 +/- 0.0055	Mean: 0.1357 +/- 0.0042	Mean: 0.0230 +/- 0.0094
Std Dev: 0.2034 +/- 0.0039	Std Dev: 0.2889 +/- 0.0030	Std Dev: 0.2025 +/- 0.0066



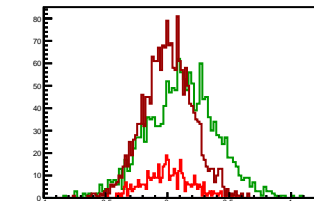
### Cycle 2, Diffs

Entries: 517	Entries: 3213	Entries: 523
Mean: 0.0065 +/- 0.0084	Mean: 0.1270 +/- 0.0051	Mean: 0.0071 +/- 0.0085
Std Dev: 0.1902 +/- 0.0059	Std Dev: 0.2909 +/- 0.0036	Std Dev: 0.1934 +/- 0.0060



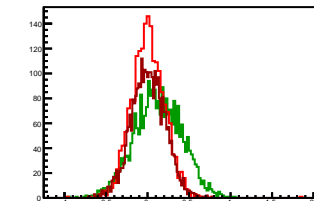
### Cycle 3, Diffs

Entries: 453	Entries: 1590	Entries: 1988
Mean: 0.0050 +/- 0.0091	Mean: 0.1177 +/- 0.0069	Mean: 0.0042 +/- 0.0044
Std Dev: 0.1942 +/- 0.0065	Std Dev: 0.2769 +/- 0.0049	Std Dev: 0.1980 +/- 0.0031



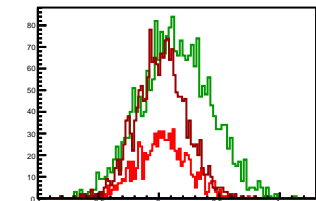
### Cycle 4, Diffs

Entries: 1953	Entries: 2548	Entries: 2963
Mean: 0.0055 +/- 0.0046	Mean: 0.1259 +/- 0.0057	Mean: 0.0075 +/- 0.0037
Std Dev: 0.2019 +/- 0.0032	Std Dev: 0.2878 +/- 0.0040	Std Dev: 0.2040 +/- 0.0027



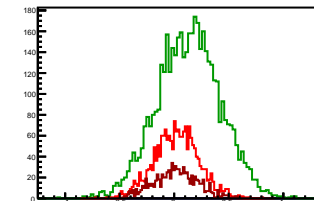
### Cycle 5, Diffs

Entries: 862	Entries: 2362	Entries: 1904
Mean: 0.0325 +/- 0.0073	Mean: 0.1368 +/- 0.0059	Mean: 0.0176 +/- 0.0047
Std Dev: 0.2155 +/- 0.0052	Std Dev: 0.2880 +/- 0.0042	Std Dev: 0.2068 +/- 0.0034



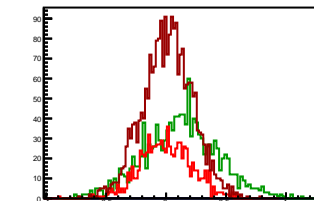
### Cycle 6, Diffs

Entries: 1948	Entries: 4549	Entries: 885
Mean: 0.0201 +/- 0.0046	Mean: 0.1335 +/- 0.0043	Mean: 0.0126 +/- 0.0067
Std Dev: 0.2049 +/- 0.0033	Std Dev: 0.2887 +/- 0.0030	Std Dev: 0.2006 +/- 0.0048



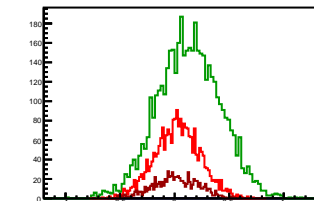
### Cycle 7, Diffs

Entries: 871	Entries: 1329	Entries: 2372
Mean: 0.0000 +/- 0.0072	Mean: 0.1246 +/- 0.0084	Mean: 0.0133 +/- 0.0043
Std Dev: 0.2139 +/- 0.0051	Std Dev: 0.3079 +/- 0.0060	Std Dev: 0.2103 +/- 0.0031



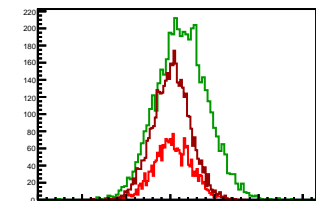
### Cycle 8, Diffs

Entries: 2436	Entries: 4634	Entries: 845
Mean: 0.0252 +/- 0.0042	Mean: 0.1315 +/- 0.0042	Mean: 0.0093 +/- 0.0070
Std Dev: 0.2096 +/- 0.0030	Std Dev: 0.2865 +/- 0.0030	Std Dev: 0.2032 +/- 0.0049



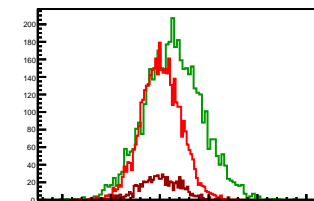
### Cycle 9, Diffs

Entries: 2237	Entries: 4676	Entries: 4178
Mean: 0.0265 +/- 0.0045	Mean: 0.1291 +/- 0.0043	Mean: 0.0112 +/- 0.0033
Std Dev: 0.2134 +/- 0.0032	Std Dev: 0.2910 +/- 0.0030	Std Dev: 0.2116 +/- 0.0023



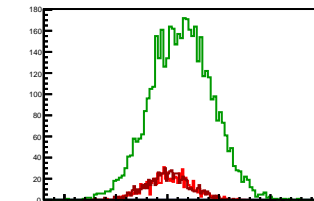
### Cycle 10, Diffs

Entries: 4218	Entries: 4546	Entries: 819
Mean: 0.0107 +/- 0.0031	Mean: 0.1381 +/- 0.0044	Mean: 0.0035 +/- 0.0072
Std Dev: 0.2036 +/- 0.0022	Std Dev: 0.2953 +/- 0.0031	Std Dev: 0.2054 +/- 0.0051



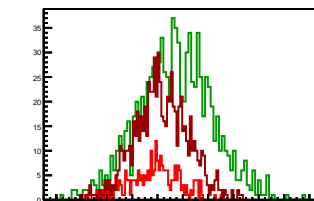
### Cycle 11, Diffs

Entries: 796	Entries: 4607	Entries: 813
Mean: 0.0158 +/- 0.0074	Mean: 0.1362 +/- 0.0043	Mean: 0.0072 +/- 0.0075
Std Dev: 0.2089 +/- 0.0052	Std Dev: 0.2947 +/- 0.0031	Std Dev: 0.2128 +/- 0.0053



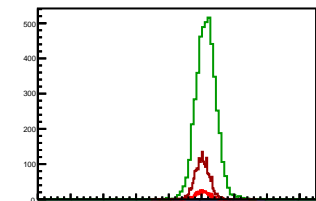
### Cycle 12, Diffs

Entries: 248	Entries: 977	Entries: 774
Mean: -0.0259 +/- 0.0127	Mean: 0.1379 +/- 0.0093	Mean: 0.0318 +/- 0.0076
Std Dev: 0.2001 +/- 0.0090	Std Dev: 0.2919 +/- 0.0066	Std Dev: 0.2126 +/- 0.0054



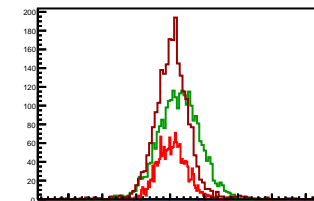
### Cycle 13, Diffs

Entries: 766	Entries: 4574	Entries: 1934
Mean: 0.0291 +/- 0.0073	Mean: 0.1383 +/- 0.0048	Mean: 0.0226 +/- 0.0051
Std Dev: 0.2010 +/- 0.0051	Std Dev: 0.3214 +/- 0.0034	Std Dev: 0.2254 +/- 0.0036



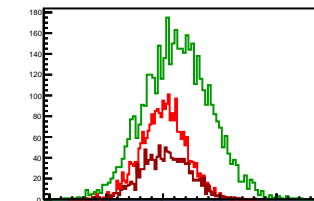
### Cycle 14, Diffs

Entries: 1926	Entries: 2617	Entries: 2323
Mean: 0.0281 +/- 0.0048	Mean: 0.1358 +/- 0.0059	Mean: 0.0314 +/- 0.0058
Std Dev: 0.2122 +/- 0.0034	Std Dev: 0.3040 +/- 0.0042	Std Dev: 0.2797 +/- 0.0041



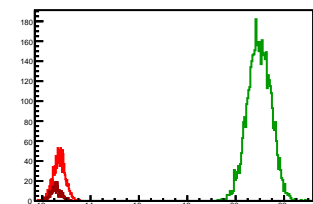
### Cycle 15, Diffs

Entries: 2661	Entries: 4568	Entries: 1343
Mean: 0.0075 +/- 0.0038	Mean: 0.1258 +/- 0.0043	Mean: 0.0238 +/- 0.0058
Std Dev: 0.1970 +/- 0.0027	Std Dev: 0.2924 +/- 0.0031	Std Dev: 0.2110 +/- 0.0041



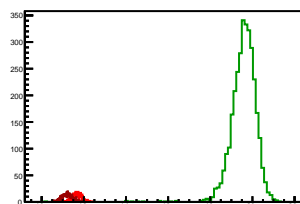
### Cycle 1, Sums

Entries: 1363	Entries: 4672	Entries: 464
Mean: 12.7169 +/- 0.0067	Mean: 20.9743 +/- 0.0070	Mean: 12.5730 +/- 0.0102
Std Dev: 0.2467 +/- 0.0047	Std Dev: 0.4783 +/- 0.0049	Std Dev: 0.2187 +/- 0.0072



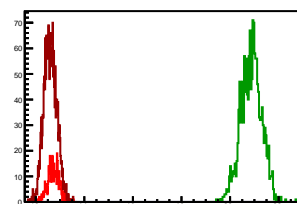
### Cycle 2, Sums

Entries: 517	Entries: 3213	Entries: 523
Mean: 11.6625 +/- 0.0104	Mean: 19.5803 +/- 0.0107	Mean: 11.2130 +/- 0.0112
Std Dev: 0.2373 +/- 0.0074	Std Dev: 0.6079 +/- 0.0076	Std Dev: 0.2550 +/- 0.0079



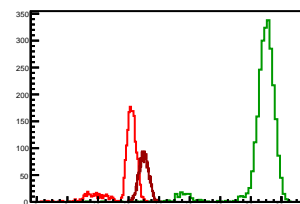
### Cycle 3, Sums

Entries: 453	Entries: 1590	Entries: 1988
Mean: 12.7397 +/- 0.0111	Mean: 20.8749 +/- 0.0107	Mean: 12.5996 +/- 0.0060
Std Dev: 0.2365 +/- 0.0079	Std Dev: 0.4258 +/- 0.0076	Std Dev: 0.2673 +/- 0.0042



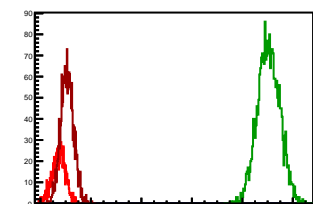
### Cycle 4, Sums

Entries: 1953	Entries: 2548	Entries: 2963
Mean: 11.7943 +/- 0.0232	Mean: 20.7144 +/- 0.0267	Mean: 12.9980 +/- 0.0059
Std Dev: 1.0245 +/- 0.0164	Std Dev: 1.3483 +/- 0.0189	Std Dev: 0.3185 +/- 0.0041



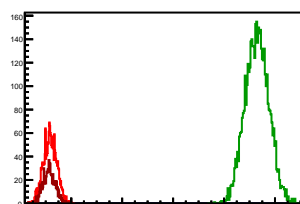
### Cycle 5, Sums

Entries: 862	Entries: 2362	Entries: 1904
Mean: 12.7277 +/- 0.0091	Mean: 21.0410 +/- 0.0091	Mean: 13.0587 +/- 0.0059
Std Dev: 0.2658 +/- 0.0064	Std Dev: 0.4402 +/- 0.0064	Std Dev: 0.2572 +/- 0.0042



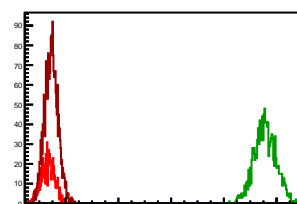
### Cycle 6, Sums

Entries: 1948	Entries: 4549	Entries: 885
Mean: 13.1701 +/- 0.0059	Mean: 21.2915 +/- 0.0069	Mean: 13.1394 +/- 0.0080
Std Dev: 0.2624 +/- 0.0042	Std Dev: 0.4622 +/- 0.0048	Std Dev: 0.2382 +/- 0.0057



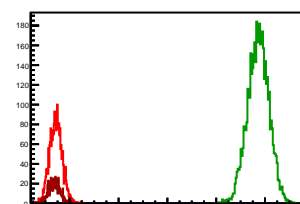
### Cycle 7, Sums

Entries: 871	Entries: 1329	Entries: 2372
Mean: 13.3328 +/- 0.0086	Mean: 21.5621 +/- 0.0113	Mean: 13.4516 +/- 0.0052
Std Dev: 0.2547 +/- 0.0061	Std Dev: 0.4136 +/- 0.0080	Std Dev: 0.2543 +/- 0.0037



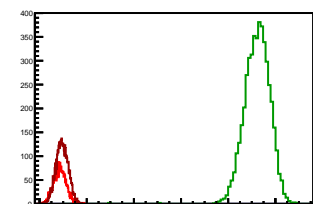
### Cycle 8, Sums

Entries: 2436	Entries: 4634	Entries: 845
Mean: 13.4288 +/- 0.0053	Mean: 21.7224 +/- 0.0064	Mean: 13.3658 +/- 0.0081
Std Dev: 0.2592 +/- 0.0037	Std Dev: 0.4375 +/- 0.0045	Std Dev: 0.2344 +/- 0.0057



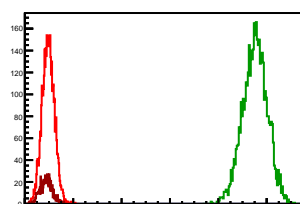
### Cycle 9, Sums

Entries: 2237	Entries: 4676	Entries: 4178
Mean: 12.8636 +/- 0.0057	Mean: 21.2247 +/- 0.0080	Mean: 12.9526 +/- 0.0040
Std Dev: 0.2695 +/- 0.0040	Std Dev: 0.5498 +/- 0.0057	Std Dev: 0.2591 +/- 0.0028



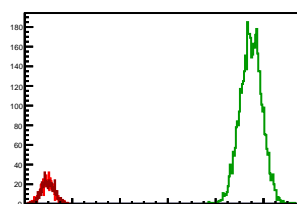
### Cycle 10, Sums

Entries: 4218	Entries: 4546	Entries: 819
Mean: 12.9675 +/- 0.0039	Mean: 21.5129 +/- 0.0075	Mean: 12.8887 +/- 0.0088
Std Dev: 0.2549 +/- 0.0028	Std Dev: 0.5079 +/- 0.0053	Std Dev: 0.2506 +/- 0.0062



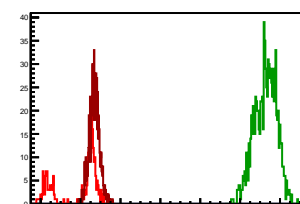
### Cycle 11, Sums

Entries: 796	Entries: 4607	Entries: 813
Mean: 12.9667 +/- 0.0094	Mean: 21.4782 +/- 0.0067	Mean: 12.9891 +/- 0.0094
Std Dev: 0.2647 +/- 0.0066	Std Dev: 0.4544 +/- 0.0047	Std Dev: 0.2694 +/- 0.0067



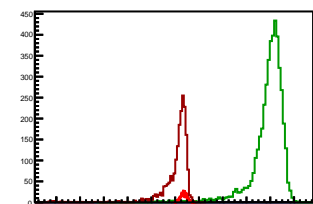
### Cycle 12, Sums

Entries: 248	Entries: 977	Entries: 774
Mean: 11.8570 +/- 0.0669	Mean: 21.2654 +/- 0.0178	Mean: 12.6936 +/- 0.0092
Std Dev: 1.0530 +/- 0.0473	Std Dev: 0.5571 +/- 0.0126	Std Dev: 0.2560 +/- 0.0065



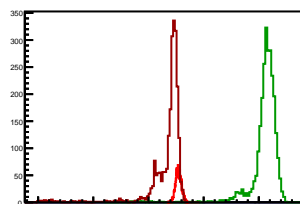
### Cycle 13, Sums

Entries: 766	Entries: 4574	Entries: 1934
Mean: 12.7299 +/- 0.0101	Mean: 19.7983 +/- 0.0214	Mean: 12.0712 +/- 0.0309
Std Dev: 0.2791 +/- 0.0071	Std Dev: 1.4469 +/- 0.0151	Std Dev: 1.3597 +/- 0.0219



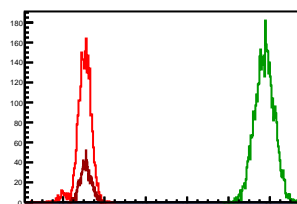
### Cycle 14, Sums

Entries: 1926	Entries: 2617	Entries: 2323
Mean: 12.7184 +/- 0.0061	Mean: 20.4934 +/- 0.0286	Mean: 11.6412 +/- 0.0377
Std Dev: 0.2659 +/- 0.0043	Std Dev: 1.4619 +/- 0.0202	Std Dev: 1.8149 +/- 0.0266



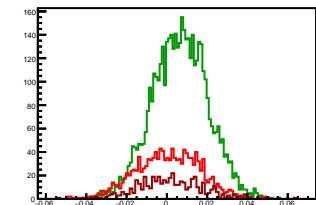
### Cycle 15, Sums

Entries: 2661	Entries: 4568	Entries: 1343
Mean: 13.0223 +/- 0.0068	Mean: 21.7331 +/- 0.0070	Mean: 13.1010 +/- 0.0073
Std Dev: 0.3527 +/- 0.0048	Std Dev: 0.4699 +/- 0.0049	Std Dev: 0.2681 +/- 0.0052



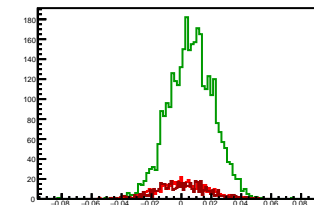
### Cycle 1, Asyms

Entries: 1363	Entries: 4672	Entries: 464
Mean: 0.0007 +/- 0.0004	Mean: 0.0065 +/- 0.0002	Mean: 0.0018 +/- 0.0007
Std Dev: 0.0160 +/- 0.0003	Std Dev: 0.0138 +/- 0.0001	Std Dev: 0.0161 +/- 0.0005



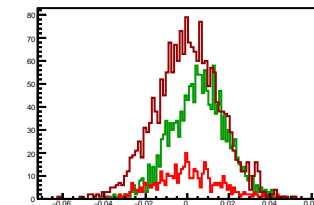
### Cycle 2, Asyms

Entries: 517	Entries: 3213	Entries: 523
Mean: 0.0005 +/- 0.0007	Mean: 0.0065 +/- 0.0003	Mean: 0.0007 +/- 0.0008
Std Dev: 0.0163 +/- 0.0005	Std Dev: 0.0149 +/- 0.0002	Std Dev: 0.0172 +/- 0.0005



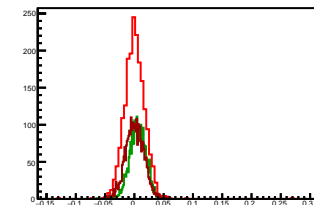
### Cycle 3, Asyms

Entries: 453	Entries: 1590	Entries: 1988
Mean: 0.0004 +/- 0.0007	Mean: 0.0056 +/- 0.0003	Mean: 0.0003 +/- 0.0004
Std Dev: 0.0152 +/- 0.0005	Std Dev: 0.0132 +/- 0.0002	Std Dev: 0.0157 +/- 0.0002



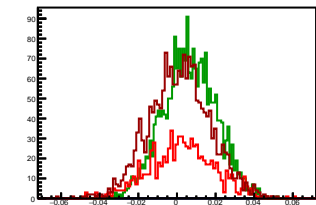
### Cycle 4, Asyms

Entries: 1953	Entries: 2548	Entries: 2963
Mean: 0.0006 +/- 0.0004	Mean: 0.0061 +/- 0.0003	Mean: 0.0006 +/- 0.0003
Std Dev: 0.0182 +/- 0.0003	Std Dev: 0.0141 +/- 0.0002	Std Dev: 0.0157 +/- 0.0002



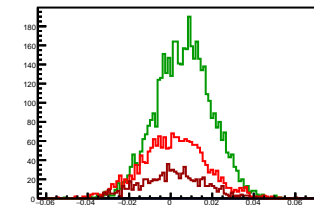
### Cycle 5, Asyms

Entries: 862	Entries: 2362	Entries: 1904
Mean: 0.0026 +/- 0.0006	Mean: 0.0065 +/- 0.0003	Mean: 0.0014 +/- 0.0004
Std Dev: 0.0169 +/- 0.0004	Std Dev: 0.0137 +/- 0.0002	Std Dev: 0.0158 +/- 0.0003



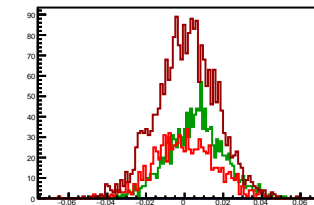
### Cycle 6, Asyms

Entries: 1948	Entries: 4549	Entries: 885
Mean: 0.0015 +/- 0.0004	Mean: 0.0063 +/- 0.0002	Mean: 0.0010 +/- 0.0005
Std Dev: 0.0155 +/- 0.0002	Std Dev: 0.0135 +/- 0.0001	Std Dev: 0.0153 +/- 0.0004



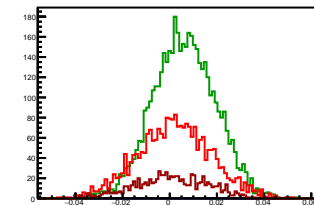
### Cycle 7, Asyms

Entries: 871	Entries: 1329	Entries: 2372
Mean: 0.0000 +/- 0.0005	Mean: 0.0058 +/- 0.0004	Mean: 0.0010 +/- 0.0003
Std Dev: 0.0160 +/- 0.0004	Std Dev: 0.0143 +/- 0.0003	Std Dev: 0.0156 +/- 0.0002



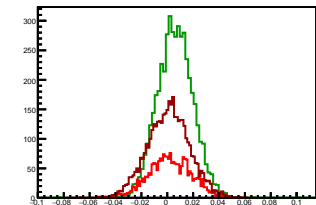
### Cycle 8, Asyms

Entries: 2436	Entries: 4634	Entries: 845
Mean: 0.0019 +/- 0.0003	Mean: 0.0061 +/- 0.0002	Mean: 0.0007 +/- 0.0005
Std Dev: 0.0156 +/- 0.0002	Std Dev: 0.0132 +/- 0.0001	Std Dev: 0.0152 +/- 0.0004



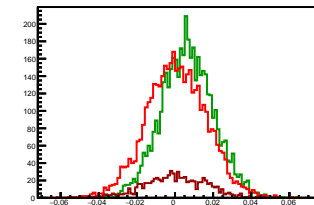
### Cycle 9, Asyms

Entries: 2237	Entries: 4676	Entries: 4178
Mean: 0.0021 +/- 0.0003	Mean: 0.0061 +/- 0.0002	Mean: 0.0009 +/- 0.0003
Std Dev: 0.0166 +/- 0.0002	Std Dev: 0.0138 +/- 0.0001	Std Dev: 0.0163 +/- 0.0002



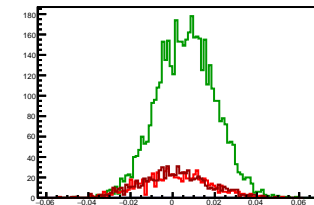
### Cycle 10, Asyms

Entries: 4218	Entries: 4546	Entries: 819
Mean: 0.0008 +/- 0.0002	Mean: 0.0064 +/- 0.0002	Mean: 0.0003 +/- 0.0006
Std Dev: 0.0157 +/- 0.0002	Std Dev: 0.0137 +/- 0.0001	Std Dev: 0.0159 +/- 0.0004



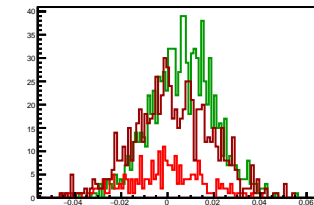
### Cycle 11, Asyms

Entries: 796	Entries: 4607	Entries: 813
Mean: 0.0012 +/- 0.0006	Mean: 0.0063 +/- 0.0002	Mean: 0.0006 +/- 0.0006
Std Dev: 0.0161 +/- 0.0004	Std Dev: 0.0137 +/- 0.0001	Std Dev: 0.0163 +/- 0.0004



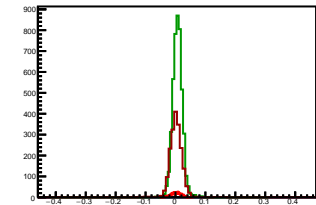
### Cycle 12, Asyms

Entries: 248	Entries: 977	Entries: 774
Mean: -0.0022 +/- 0.0011	Mean: 0.0065 +/- 0.0004	Mean: 0.0025 +/- 0.0006
Std Dev: 0.0168 +/- 0.0008	Std Dev: 0.0137 +/- 0.0003	Std Dev: 0.0167 +/- 0.0004



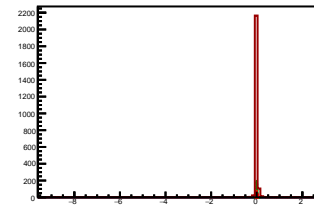
### Cycle 13, Asyms

Entries: 766	Entries: 4574	Entries: 1934
Mean: 0.0023 +/- 0.0006	Mean: 0.0071 +/- 0.0003	Mean: 0.0018 +/- 0.0006
Std Dev: 0.0158 +/- 0.0004	Std Dev: 0.0183 +/- 0.0002	Std Dev: 0.0252 +/- 0.0004



### Cycle 14, Asyms

Entries: 1926	Entries: 2617	Entries: 2323
Mean: 0.0022 +/- 0.0004	Mean: 0.0067 +/- 0.0003	Mean: 0.0002 +/- 0.0004
Std Dev: 0.0167 +/- 0.0003	Std Dev: 0.0156 +/- 0.0002	Std Dev: 0.1906 +/- 0.0028



### Cycle 15, Asyms

Entries: 2661	Entries: 4568	Entries: 1343
Mean: 0.0006 +/- 0.0003	Mean: 0.0058 +/- 0.0002	Mean: 0.0018 +/- 0.0004
Std Dev: 0.0151 +/- 0.0002	Std Dev: 0.0135 +/- 0.0001	Std Dev: 0.0161 +/- 0.0003

