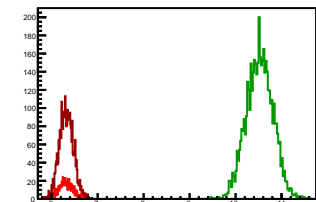


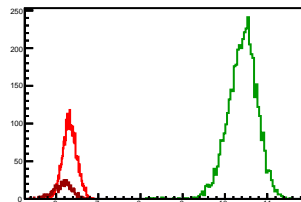
Cycle 1, PosHel

Entries: 684	Entries: 4652	Entries: 2966
Mean: 6.3084 +/- 0.0059	Mean: 10.5228 +/- 0.0042	Mean: 6.3212 +/- 0.0028
Std Dev: 0.1537 +/- 0.0042	Std Dev: 0.2888 +/- 0.0030	Std Dev: 0.1552 +/- 0.0020



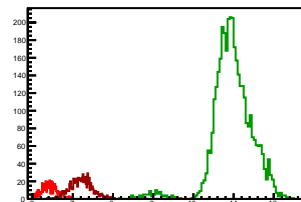
Cycle 2, PosHel

Entries: 2974	Entries: 4565	Entries: 672
Mean: 6.3252 +/- 0.0031	Mean: 10.4156 +/- 0.0052	Mean: 6.1506 +/- 0.0085
Std Dev: 0.1672 +/- 0.0022	Std Dev: 0.3498 +/- 0.0037	Std Dev: 0.2199 +/- 0.0060



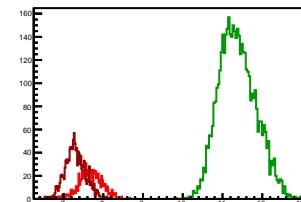
Cycle 3, PosHel

Entries: 671	Entries: 3742	Entries: 782
Mean: 6.4283 +/- 0.0077	Mean: 10.9658 +/- 0.0083	Mean: 7.2070 +/- 0.0097
Std Dev: 0.1992 +/- 0.0054	Std Dev: 0.5077 +/- 0.0059	Std Dev: 0.2710 +/- 0.0069



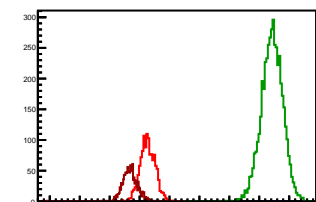
Cycle 4, PosHel

Entries: 768	Entries: 4684	Entries: 1313
Mean: 7.6829 +/- 0.0103	Mean: 11.3765 +/- 0.0067	Mean: 7.2971 +/- 0.0072
Std Dev: 0.2852 +/- 0.0073	Std Dev: 0.4619 +/- 0.0048	Std Dev: 0.2614 +/- 0.0051



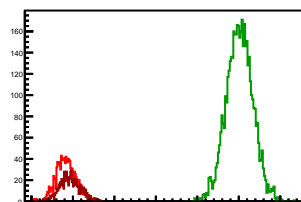
Cycle 5, PosHel

Entries: 1273	Entries: 4646	Entries: 1314
Mean: 7.2685 +/- 0.0075	Mean: 11.4260 +/- 0.0053	Mean: 6.6883 +/- 0.0068
Std Dev: 0.2683 +/- 0.0053	Std Dev: 0.3609 +/- 0.0037	Std Dev: 0.2461 +/- 0.0048



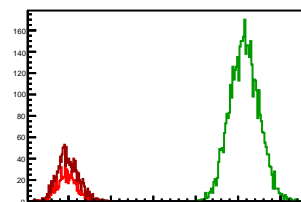
Cycle 6, PosHel

Entries: 1276	Entries: 4592	Entries: 816
Mean: 6.8373 +/- 0.0068	Mean: 11.0189 +/- 0.0047	Mean: 6.9328 +/- 0.0085
Std Dev: 0.2421 +/- 0.0048	Std Dev: 0.3198 +/- 0.0033	Std Dev: 0.2415 +/- 0.0060



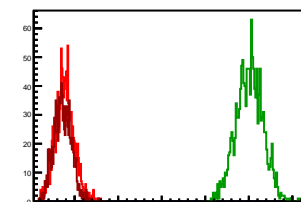
Cycle 7, PosHel

Entries: 793	Entries: 4609	Entries: 1362
Mean: 6.9625 +/- 0.0084	Mean: 11.1497 +/- 0.0051	Mean: 6.9838 +/- 0.0068
Std Dev: 0.2375 +/- 0.0060	Std Dev: 0.3450 +/- 0.0036	Std Dev: 0.2520 +/- 0.0048



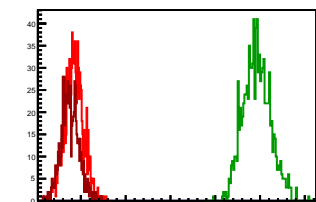
Cycle 8, PosHel

Entries: 1297	Entries: 1435	Entries: 1066
Mean: 6.7724 +/- 0.0060	Mean: 11.0178 +/- 0.0061	Mean: 6.7220 +/- 0.0062
Std Dev: 0.2145 +/- 0.0042	Std Dev: 0.3082 +/- 0.0058	Std Dev: 0.2017 +/- 0.0044



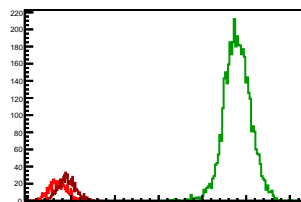
Cycle 9, PosHel

Entries: 1047	Entries: 1015	Entries: 740
Mean: 6.8500 +/- 0.0064	Mean: 10.9256 +/- 0.0095	Mean: 6.7603 +/- 0.0074
Std Dev: 0.2070 +/- 0.0045	Std Dev: 0.3019 +/- 0.0067	Std Dev: 0.2018 +/- 0.0052



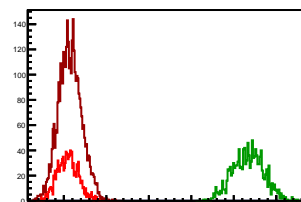
Cycle 10, PosHel

Entries: 717	Entries: 4321	Entries: 885
Mean: 6.6991 +/- 0.0077	Mean: 10.7952 +/- 0.0047	Mean: 6.9009 +/- 0.0066
Std Dev: 0.2071 +/- 0.0055	Std Dev: 0.3080 +/- 0.0033	Std Dev: 0.1970 +/- 0.0047



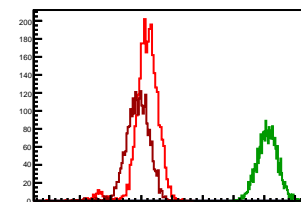
Cycle 11, PosHel

Entries: 1266	Entries: 1362	Entries: 3735
Mean: 7.0951 +/- 0.0069	Mean: 11.3451 +/- 0.0099	Mean: 7.1435 +/- 0.0045
Std Dev: 0.2461 +/- 0.0049	Std Dev: 0.3655 +/- 0.0070	Std Dev: 0.2730 +/- 0.0032



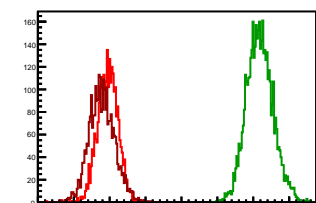
Cycle 12, PosHel

Entries: 2966	Entries: 2402	Entries: 2622
Mean: 7.1709 +/- 0.0076	Mean: 11.1069 +/- 0.0068	Mean: 6.8841 +/- 0.0074
Std Dev: 0.4165 +/- 0.0054	Std Dev: 0.3343 +/- 0.0048	Std Dev: 0.3792 +/- 0.0052



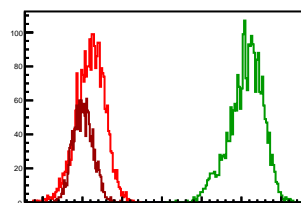
Cycle 13, PosHel

Entries: 2654	Entries: 4648	Entries: 2834
Mean: 6.9453 +/- 0.0055	Mean: 11.1831 +/- 0.0055	Mean: 6.7853 +/- 0.0067
Std Dev: 0.2814 +/- 0.0039	Std Dev: 0.3719 +/- 0.0039	Std Dev: 0.3578 +/- 0.0048



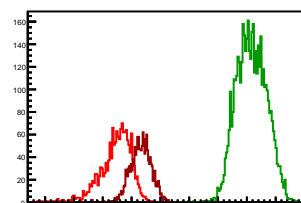
Cycle 14, PosHel

Entries: 2757	Entries: 2591	Entries: 1591
Mean: 7.2059 +/- 0.0068	Mean: 11.1145 +/- 0.0083	Mean: 7.0161 +/- 0.0063
Std Dev: 0.3568 +/- 0.0048	Std Dev: 0.4250 +/- 0.0059	Std Dev: 0.2507 +/- 0.0044



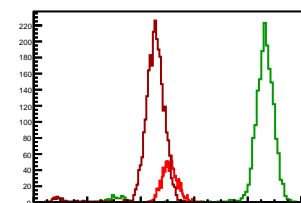
Cycle 15, PosHel

Entries: 1599	Entries: 4666	Entries: 1516
Mean: 6.4512 +/- 0.0135	Mean: 11.1556 +/- 0.0075	Mean: 7.3246 +/- 0.0091
Std Dev: 0.5400 +/- 0.0095	Std Dev: 0.5137 +/- 0.0053	Std Dev: 0.3557 +/- 0.0065



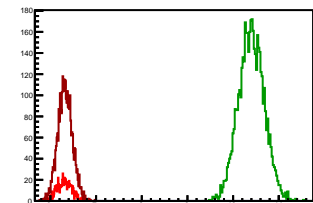
Cycle 16, PosHel

Entries: 1494	Entries: 1882	Entries: 2810
Mean: 7.0862 +/- 0.0074	Mean: 10.4801 +/- 0.0229	Mean: 6.4736 +/- 0.0110
Std Dev: 0.2845 +/- 0.0052	Std Dev: 0.9932 +/- 0.0162	Std Dev: 0.5845 +/- 0.0078



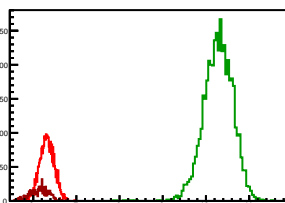
Cycle 1, NegHel

Entries: 684	Entries: 4652	Entries: 2966
Mean: 6.3093 +/- 0.0063	Mean: 10.3978 +/- 0.0041	Mean: 6.3214 +/- 0.0029
Std Dev: 0.1649 +/- 0.0045	Std Dev: 0.2808 +/- 0.0029	Std Dev: 0.1604 +/- 0.0021



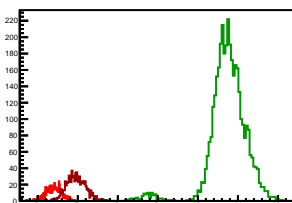
Cycle 2, NegHel

Entries: 2974	Entries: 4565	Entries: 672
Mean: 6.3202 +/- 0.0031	Mean: 10.2818 +/- 0.0051	Mean: 6.1407 +/- 0.0083
Std Dev: 0.1679 +/- 0.0022	Std Dev: 0.3435 +/- 0.0036	Std Dev: 0.2158 +/- 0.0059



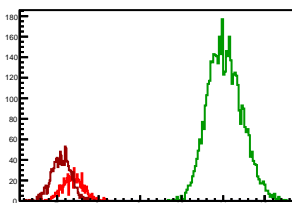
Cycle 3, NegHel

Entries: 671	Entries: 3742	Entries: 782
Mean: 6.3994 +/- 0.0073	Mean: 10.7468 +/- 0.0077	Mean: 6.9474 +/- 0.0088
Std Dev: 0.1891 +/- 0.0052	Std Dev: 0.4736 +/- 0.0055	Std Dev: 0.2465 +/- 0.0062



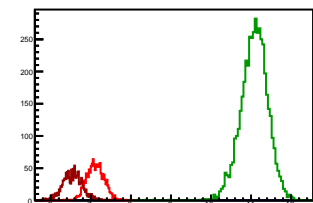
Cycle 4, NegHel

Entries: 768	Entries: 4684	Entries: 1313
Mean: 7.3827 +/- 0.0093	Mean: 11.0440 +/- 0.0060	Mean: 7.1016 +/- 0.0064
Std Dev: 0.2587 +/- 0.0066	Std Dev: 0.4134 +/- 0.0043	Std Dev: 0.2315 +/- 0.0045



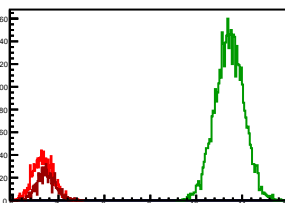
Cycle 5, NegHel

Entries: 1273	Entries: 4646	Entries: 1314
Mean: 7.1110 +/- 0.0062	Mean: 11.0792 +/- 0.0050	Mean: 6.5423 +/- 0.0066
Std Dev: 0.2202 +/- 0.0044	Std Dev: 0.3423 +/- 0.0036	Std Dev: 0.2390 +/- 0.0047



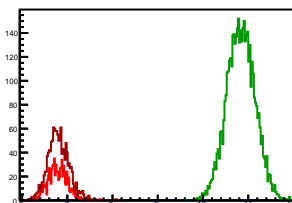
Cycle 6, NegHel

Entries: 1276	Entries: 4592	Entries: 816
Mean: 6.6608 +/- 0.0061	Mean: 10.7243 +/- 0.0046	Mean: 6.7361 +/- 0.0073
Std Dev: 0.2168 +/- 0.0043	Std Dev: 0.3113 +/- 0.0032	Std Dev: 0.2078 +/- 0.0051



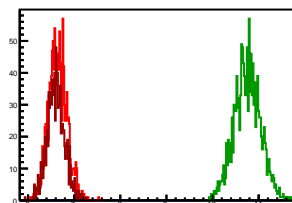
Cycle 7, NegHel

Entries: 793	Entries: 4609	Entries: 1362
Mean: 6.7668 +/- 0.0079	Mean: 10.8374 +/- 0.0046	Mean: 6.8058 +/- 0.0062
Std Dev: 0.2216 +/- 0.0056	Std Dev: 0.3102 +/- 0.0032	Std Dev: 0.2301 +/- 0.0044



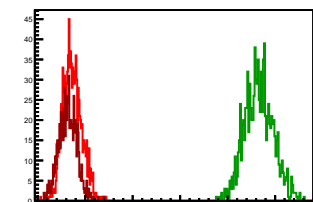
Cycle 8, NegHel

Entries: 1297	Entries: 1435	Entries: 1066
Mean: 6.6452 +/- 0.0054	Mean: 10.7555 +/- 0.0075	Mean: 6.6030 +/- 0.0058
Std Dev: 0.1932 +/- 0.0038	Std Dev: 0.2859 +/- 0.0053	Std Dev: 0.1895 +/- 0.0041



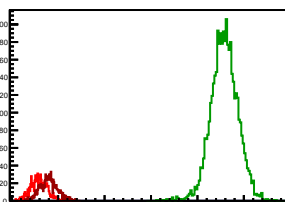
Cycle 9, NegHel

Entries: 1047	Entries: 1015	Entries: 740
Mean: 6.7283 +/- 0.0061	Mean: 10.6607 +/- 0.0094	Mean: 6.6330 +/- 0.0069
Std Dev: 0.1959 +/- 0.0043	Std Dev: 0.3009 +/- 0.0067	Std Dev: 0.1890 +/- 0.0049



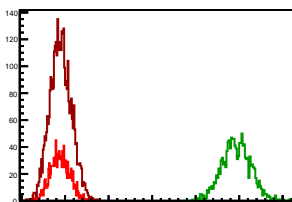
Cycle 10, NegHel

Entries: 717	Entries: 4321	Entries: 885
Mean: 6.5875 +/- 0.0070	Mean: 10.5779 +/- 0.0045	Mean: 6.8013 +/- 0.0063
Std Dev: 0.1876 +/- 0.0050	Std Dev: 0.2937 +/- 0.0032	Std Dev: 0.1878 +/- 0.0045



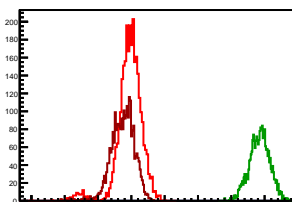
Cycle 11, NegHel

Entries: 1266	Entries: 1362	Entries: 3735
Mean: 6.8864 +/- 0.0061	Mean: 10.9365 +/- 0.0090	Mean: 6.8967 +/- 0.0040
Std Dev: 0.2186 +/- 0.0043	Std Dev: 0.3309 +/- 0.0063	Std Dev: 0.2442 +/- 0.0028



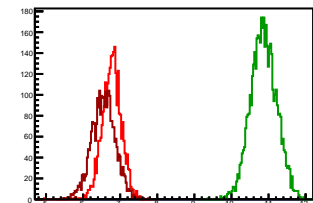
Cycle 12, NegHel

Entries: 2966	Entries: 2402	Entries: 2622
Mean: 6.9417 +/- 0.0073	Mean: 10.8499 +/- 0.0062	Mean: 6.7420 +/- 0.0068
Std Dev: 0.3975 +/- 0.0052	Std Dev: 0.3059 +/- 0.0044	Std Dev: 0.3506 +/- 0.0048



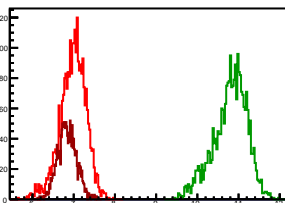
Cycle 13, NegHel

Entries: 2654	Entries: 4648	Entries: 2834
Mean: 6.7719 +/- 0.0050	Mean: 10.8667 +/- 0.0051	Mean: 6.5485 +/- 0.0060
Std Dev: 0.2588 +/- 0.0036	Std Dev: 0.3489 +/- 0.0036	Std Dev: 0.3169 +/- 0.0042



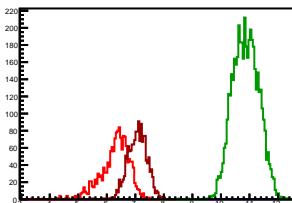
Cycle 14, NegHel

Entries: 2757	Entries: 2591	Entries: 1591
Mean: 6.9802 +/- 0.0060	Mean: 10.7964 +/- 0.0081	Mean: 6.8394 +/- 0.0056
Std Dev: 0.3162 +/- 0.0043	Std Dev: 0.4103 +/- 0.0057	Std Dev: 0.2245 +/- 0.0040



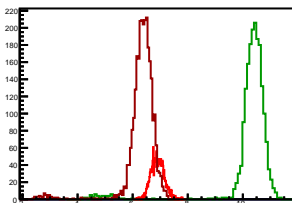
Cycle 15, NegHel

Entries: 1599	Entries: 4666	Entries: 1516
Mean: 6.2624 +/- 0.0128	Mean: 10.8640 +/- 0.0066	Mean: 7.0697 +/- 0.0088
Std Dev: 0.5108 +/- 0.0090	Std Dev: 0.4537 +/- 0.0047	Std Dev: 0.3433 +/- 0.0062



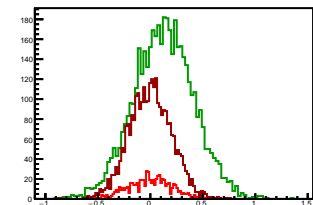
Cycle 16, NegHel

Entries: 1494	Entries: 1882	Entries: 2810
Mean: 6.9056 +/- 0.0063	Mean: 10.2518 +/- 0.0225	Mean: 6.3208 +/- 0.0109
Std Dev: 0.2440 +/- 0.0045	Std Dev: 0.9796 +/- 0.0160	Std Dev: 0.5756 +/- 0.0077



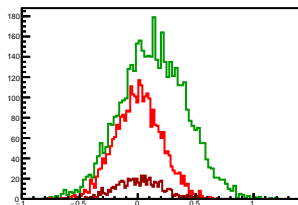
Cycle 1, Diffs

Entries: 684	Entries: 4652	Entries: 2966
Mean: -0.0009 ± 0.0079	Mean: 0.1250 ± 0.0042	Mean: -0.0002 ± 0.0037
Std Dev: 0.2058 ± 0.0056	Std Dev: 0.2871 ± 0.0030	Std Dev: 0.2014 ± 0.0026



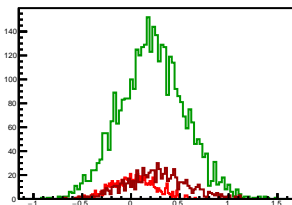
Cycle 2, Diffs

Entries: 2974	Entries: 4565	Entries: 672
Mean: 0.0049 ± 0.0037	Mean: 0.1338 ± 0.0042	Mean: 0.0099 ± 0.0077
Std Dev: 0.1994 ± 0.0026	Std Dev: 0.2842 ± 0.0030	Std Dev: 0.2006 ± 0.0055



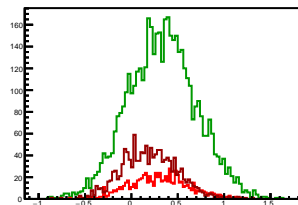
Cycle 3, Diffs

Entries: 671	Entries: 3742	Entries: 782
Mean: 0.0290 ± 0.0064	Mean: 0.2190 ± 0.0054	Mean: 0.2596 ± 0.0110
Std Dev: 0.2185 ± 0.0060	Std Dev: 0.3311 ± 0.0038	Std Dev: 0.3075 ± 0.0078



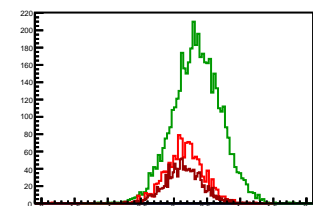
Cycle 4, Diffs

Entries: 768	Entries: 4684	Entries: 1313
Mean: 0.3002 ± 0.0115	Mean: 0.3325 ± 0.0054	Mean: 0.1954 ± 0.0062
Std Dev: 0.3199 ± 0.0062	Std Dev: 0.3683 ± 0.0038	Std Dev: 0.2973 ± 0.0058



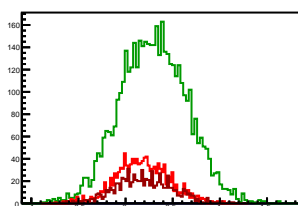
Cycle 5, Diffs

Entries: 1273	Entries: 4646	Entries: 1314
Mean: 0.1575 ± 0.0080	Mean: 0.3468 ± 0.0053	Mean: 0.1460 ± 0.0077
Std Dev: 0.2872 ± 0.0057	Std Dev: 0.3586 ± 0.0037	Std Dev: 0.2775 ± 0.0054



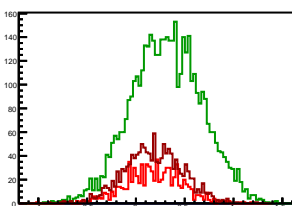
Cycle 6, Diffs

Entries: 1276	Entries: 4592	Entries: 816
Mean: 0.1765 ± 0.0080	Mean: 0.2945 ± 0.0053	Mean: 0.1967 ± 0.0104
Std Dev: 0.2851 ± 0.0056	Std Dev: 0.3558 ± 0.0037	Std Dev: 0.2972 ± 0.0074



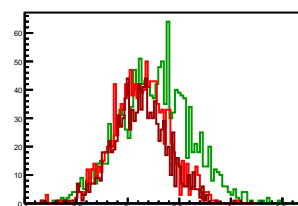
Cycle 7, Diffs

Entries: 793	Entries: 4609	Entries: 1362
Mean: 0.1757 ± 0.0105	Mean: 0.3123 ± 0.0053	Mean: 0.1781 ± 0.0080
Std Dev: 0.2961 ± 0.0074	Std Dev: 0.3599 ± 0.0037	Std Dev: 0.2942 ± 0.0056



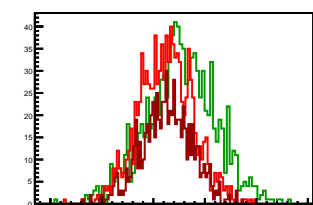
Cycle 8, Diffs

Entries: 1297	Entries: 1435	Entries: 1066
Mean: 0.1273 ± 0.0074	Mean: 0.2623 ± 0.0092	Mean: 0.1190 ± 0.0079
Std Dev: 0.2653 ± 0.0052	Std Dev: 0.3480 ± 0.0065	Std Dev: 0.2593 ± 0.0056



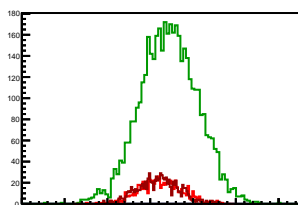
Cycle 9, Diffs

Entries: 1047	Entries: 1015	Entries: 740
Mean: 0.1217 ± 0.0080	Mean: 0.2649 ± 0.0105	Mean: 0.1274 ± 0.0090
Std Dev: 0.2589 ± 0.0057	Std Dev: 0.3351 ± 0.0074	Std Dev: 0.2462 ± 0.0064



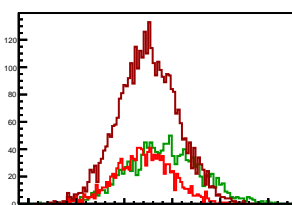
Cycle 10, Diffs

Entries: 717	Entries: 4321	Entries: 885
Mean: 0.1116 ± 0.0091	Mean: 0.2173 ± 0.0051	Mean: 0.0996 ± 0.0062
Std Dev: 0.2449 ± 0.0065	Std Dev: 0.3344 ± 0.0036	Std Dev: 0.2428 ± 0.0058



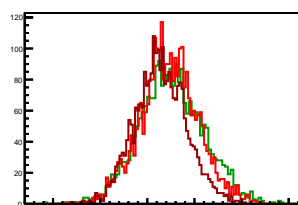
Cycle 11, Diffs

Entries: 1266	Entries: 1362	Entries: 3735
Mean: 0.2086 ± 0.0063	Mean: 0.4085 ± 0.0103	Mean: 0.2468 ± 0.0051
Std Dev: 0.2962 ± 0.0059	Std Dev: 0.3803 ± 0.0073	Std Dev: 0.3116 ± 0.0036



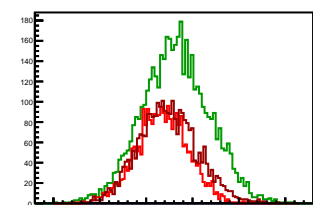
Cycle 12, Diffs

Entries: 2966	Entries: 2402	Entries: 2622
Mean: 0.2292 ± 0.0056	Mean: 0.2570 ± 0.0070	Mean: 0.1421 ± 0.0053
Std Dev: 0.3028 ± 0.0039	Std Dev: 0.3429 ± 0.0049	Std Dev: 0.2735 ± 0.0038



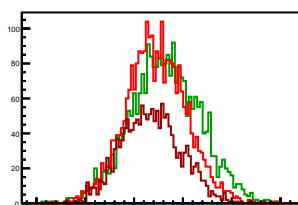
Cycle 13, Diffs

Entries: 2654	Entries: 4648	Entries: 2834
Mean: 0.1734 ± 0.0054	Mean: 0.3163 ± 0.0053	Mean: 0.2368 ± 0.0060
Std Dev: 0.2788 ± 0.0038	Std Dev: 0.3624 ± 0.0038	Std Dev: 0.3176 ± 0.0042



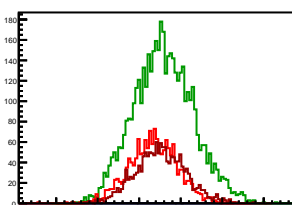
Cycle 14, Diffs

Entries: 2757	Entries: 2591	Entries: 1591
Mean: 0.2256 ± 0.0059	Mean: 0.3181 ± 0.0070	Mean: 0.1767 ± 0.0075
Std Dev: 0.3077 ± 0.0041	Std Dev: 0.3560 ± 0.0049	Std Dev: 0.3001 ± 0.0053



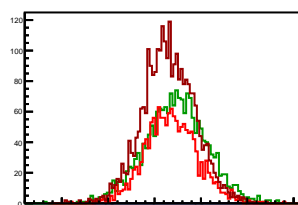
Cycle 15, Diffs

Entries: 1599	Entries: 4666	Entries: 1516
Mean: 0.1688 ± 0.0073	Mean: 0.2917 ± 0.0053	Mean: 0.2549 ± 0.0078
Std Dev: 0.2926 ± 0.0052	Std Dev: 0.3592 ± 0.0037	Std Dev: 0.3019 ± 0.0055



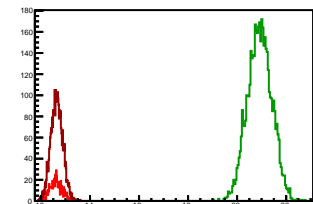
Cycle 16, Diffs

Entries: 1494	Entries: 1882	Entries: 2810
Mean: 0.1805 ± 0.0073	Mean: 0.2283 ± 0.0077	Mean: 0.1528 ± 0.0053
Std Dev: 0.2836 ± 0.0052	Std Dev: 0.3320 ± 0.0054	Std Dev: 0.2827 ± 0.0038



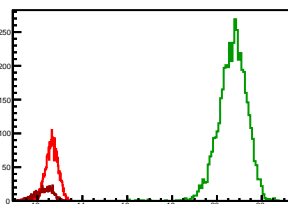
Cycle 1, Sums

Entries: 684	Entries: 4652	Entries: 2966
Mean: 12.6177 +/- 0.0093	Mean: 20.9205 +/- 0.0072	Mean: 12.6427 +/- 0.0045
Std Dev: 0.2435 +/- 0.0066	Std Dev: 0.4921 +/- 0.0051	Std Dev: 0.2431 +/- 0.0032



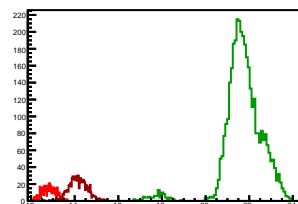
Cycle 2, Sums

Entries: 2974	Entries: 4565	Entries: 672
Mean: 12.6454 +/- 0.0049	Mean: 20.6975 +/- 0.0094	Mean: 12.2913 +/- 0.0149
Std Dev: 0.2693 +/- 0.0035	Std Dev: 0.6324 +/- 0.0066	Std Dev: 0.3868 +/- 0.0105



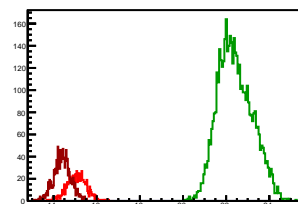
Cycle 3, Sums

Entries: 671	Entries: 3742	Entries: 782
Mean: 12.8277 +/- 0.0124	Mean: 21.7126 +/- 0.0151	Mean: 14.1544 +/- 0.0149
Std Dev: 0.3211 +/- 0.0088	Std Dev: 0.9243 +/- 0.0107	Std Dev: 0.4169 +/- 0.0105



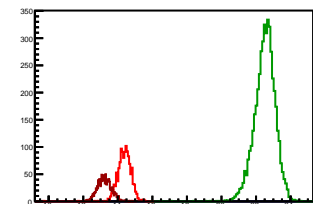
Cycle 4, Sums

Entries: 768	Entries: 4684	Entries: 1313
Mean: 15.0656 +/- 0.0159	Mean: 22.4205 +/- 0.0116	Mean: 14.3987 +/- 0.0109
Std Dev: 0.4406 +/- 0.0112	Std Dev: 0.7956 +/- 0.0082	Std Dev: 0.3943 +/- 0.0077



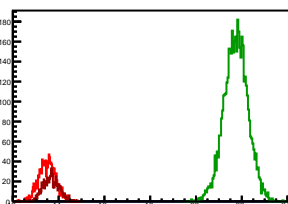
Cycle 5, Sums

Entries: 1273	Entries: 4646	Entries: 1314
Mean: 14.3795 +/- 0.0112	Mean: 22.5052 +/- 0.0089	Mean: 13.2306 +/- 0.0110
Std Dev: 0.3982 +/- 0.0079	Std Dev: 0.6052 +/- 0.0063	Std Dev: 0.3980 +/- 0.0078



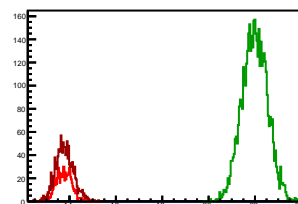
Cycle 6, Sums

Entries: 1276	Entries: 4592	Entries: 816
Mean: 13.4981 +/- 0.0101	Mean: 21.7432 +/- 0.0077	Mean: 13.6689 +/- 0.0119
Std Dev: 0.3605 +/- 0.0071	Std Dev: 0.5212 +/- 0.0054	Std Dev: 0.3387 +/- 0.0084



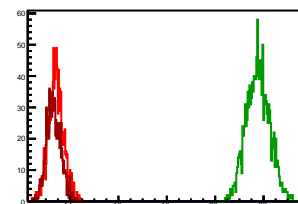
Cycle 7, Sums

Entries: 793	Entries: 4609	Entries: 1362
Mean: 13.7493 +/- 0.0125	Mean: 21.9872 +/- 0.0081	Mean: 13.7896 +/- 0.0104
Std Dev: 0.3512 +/- 0.0088	Std Dev: 0.5486 +/- 0.0057	Std Dev: 0.3825 +/- 0.0073



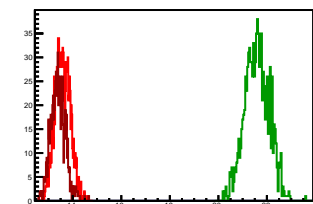
Cycle 8, Sums

Entries: 1297	Entries: 1435	Entries: 1066
Mean: 13.4176 +/- 0.0086	Mean: 21.7733 +/- 0.0127	Mean: 13.3250 +/- 0.0090
Std Dev: 0.3103 +/- 0.0061	Std Dev: 0.4821 +/- 0.0090	Std Dev: 0.2932 +/- 0.0064



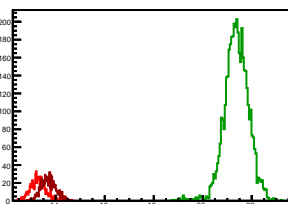
Cycle 9, Sums

Entries: 1047	Entries: 1015	Entries: 740
Mean: 13.5783 +/- 0.0095	Mean: 21.5863 +/- 0.0157	Mean: 13.3933 +/- 0.0112
Std Dev: 0.3089 +/- 0.0067	Std Dev: 0.5011 +/- 0.0111	Std Dev: 0.3038 +/- 0.0079



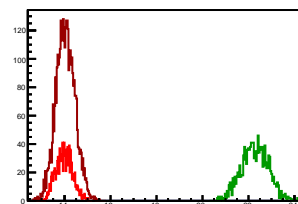
Cycle 10, Sums

Entries: 717	Entries: 4321	Entries: 885
Mean: 13.2867 +/- 0.0116	Mean: 21.3730 +/- 0.0076	Mean: 13.7022 +/- 0.0100
Std Dev: 0.3100 +/- 0.0082	Std Dev: 0.5003 +/- 0.0054	Std Dev: 0.2986 +/- 0.0071



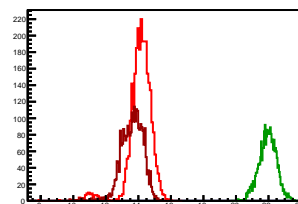
Cycle 11, Sums

Entries: 1266	Entries: 1362	Entries: 3735
Mean: 13.9815 +/- 0.0101	Mean: 22.2816 +/- 0.0158	Mean: 14.0401 +/- 0.0068
Std Dev: 0.3592 +/- 0.0071	Std Dev: 0.5844 +/- 0.0112	Std Dev: 0.4139 +/- 0.0048



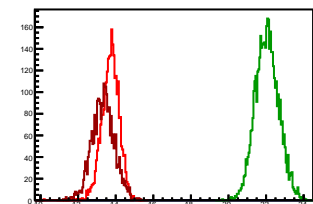
Cycle 12, Sums

Entries: 2966	Entries: 2402	Entries: 2622
Mean: 14.1126 +/- 0.0139	Mean: 21.9567 +/- 0.0110	Mean: 13.6261 +/- 0.0132
Std Dev: 0.7557 +/- 0.0098	Std Dev: 0.5414 +/- 0.0078	Std Dev: 0.6772 +/- 0.0094



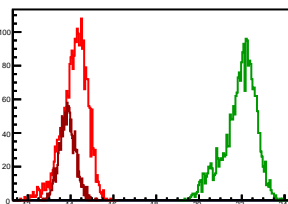
Cycle 13, Sums

Entries: 2654	Entries: 4648	Entries: 2834
Mean: 13.7172 +/- 0.0090	Mean: 22.0498 +/- 0.0091	Mean: 13.3338 +/- 0.0112
Std Dev: 0.4632 +/- 0.0064	Std Dev: 0.6235 +/- 0.0065	Std Dev: 0.5967 +/- 0.0079



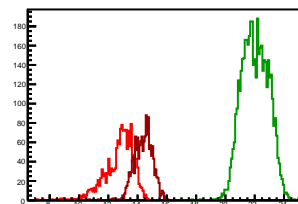
Cycle 14, Sums

Entries: 2757	Entries: 2591	Entries: 1591
Mean: 14.1861 +/- 0.0114	Mean: 21.9109 +/- 0.0148	Mean: 13.8555 +/- 0.0093
Std Dev: 0.5999 +/- 0.0081	Std Dev: 0.7557 +/- 0.0105	Std Dev: 0.3694 +/- 0.0065



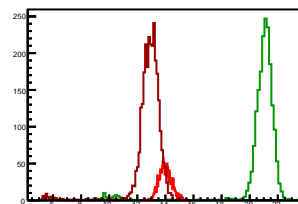
Cycle 15, Sums

Entries: 1599	Entries: 4666	Entries: 1516
Mean: 12.7335 +/- 0.0252	Mean: 22.0196 +/- 0.0132	Mean: 14.3943 +/- 0.0162
Std Dev: 1.0096 +/- 0.0179	Std Dev: 0.9003 +/- 0.0093	Std Dev: 0.6306 +/- 0.0115



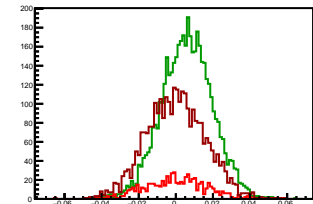
Cycle 16, Sums

Entries: 1494	Entries: 1882	Entries: 2810
Mean: 13.9918 +/- 0.0116	Mean: 20.7319 +/- 0.0448	Mean: 12.7945 +/- 0.0212
Std Dev: 0.4477 +/- 0.0082	Std Dev: 1.9447 +/- 0.0317	Std Dev: 1.1251 +/- 0.0150



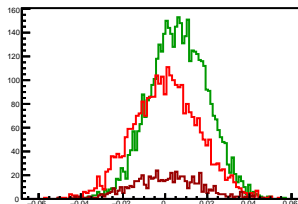
Cycle 1, Asyms

Entries: 684	Entries: 4652	Entries: 2966
Mean: -0.0001 ± 0.0006	Mean: 0.0060 ± 0.0002	Mean: -0.0000 ± 0.0003
Std Dev: 0.0163 ± 0.0004	Std Dev: 0.0137 ± 0.0001	Std Dev: 0.0159 ± 0.0002



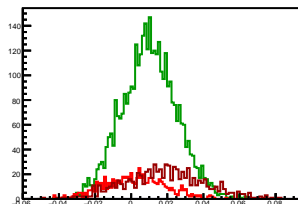
Cycle 2, Asyms

Entries: 2974	Entries: 4565	Entries: 672
Mean: 0.0004 ± 0.0003	Mean: 0.0065 ± 0.0002	Mean: 0.0008 ± 0.0006
Std Dev: 0.0157 ± 0.0002	Std Dev: 0.0137 ± 0.0001	Std Dev: 0.0163 ± 0.0004



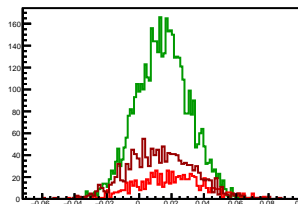
Cycle 3, Asyms

Entries: 671	Entries: 3742	Entries: 782
Mean: 0.0022 ± 0.0007	Mean: 0.0100 ± 0.0002	Mean: 0.0183 ± 0.0008
Std Dev: 0.0170 ± 0.0005	Std Dev: 0.0152 ± 0.0002	Std Dev: 0.0217 ± 0.0005



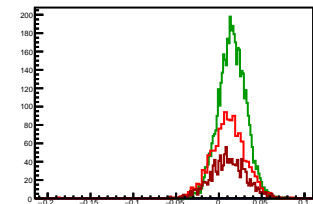
Cycle 4, Asyms

Entries: 768	Entries: 4684	Entries: 1313
Mean: 0.0199 ± 0.0008	Mean: 0.0148 ± 0.0002	Mean: 0.0135 ± 0.0006
Std Dev: 0.0211 ± 0.0005	Std Dev: 0.0163 ± 0.0002	Std Dev: 0.0205 ± 0.0004



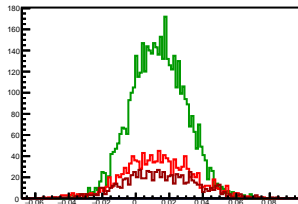
Cycle 5, Asyms

Entries: 1273	Entries: 4646	Entries: 1314
Mean: 0.0108 ± 0.0006	Mean: 0.0154 ± 0.0002	Mean: 0.0110 ± 0.0006
Std Dev: 0.0203 ± 0.0004	Std Dev: 0.0159 ± 0.0002	Std Dev: 0.0209 ± 0.0004



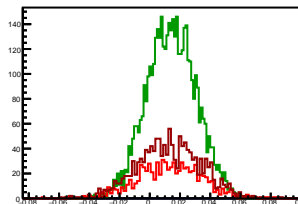
Cycle 6, Asyms

Entries: 1276	Entries: 4592	Entries: 816
Mean: 0.0130 ± 0.0006	Mean: 0.0135 ± 0.0002	Mean: 0.0143 ± 0.0008
Std Dev: 0.0210 ± 0.0004	Std Dev: 0.0164 ± 0.0002	Std Dev: 0.0216 ± 0.0005



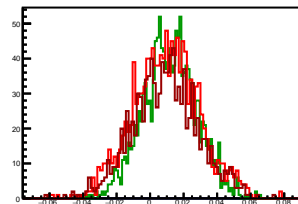
Cycle 7, Asyms

Entries: 793	Entries: 4609	Entries: 1362
Mean: 0.0128 ± 0.0008	Mean: 0.0142 ± 0.0002	Mean: 0.0129 ± 0.0006
Std Dev: 0.0215 ± 0.0005	Std Dev: 0.0163 ± 0.0002	Std Dev: 0.0212 ± 0.0004



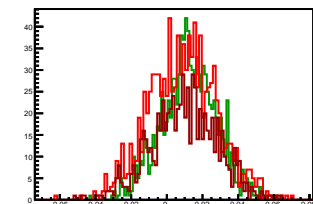
Cycle 8, Asyms

Entries: 1297	Entries: 1435	Entries: 1066
Mean: 0.0094 ± 0.0005	Mean: 0.0120 ± 0.0004	Mean: 0.0089 ± 0.0006
Std Dev: 0.0197 ± 0.0004	Std Dev: 0.0160 ± 0.0003	Std Dev: 0.0194 ± 0.0004



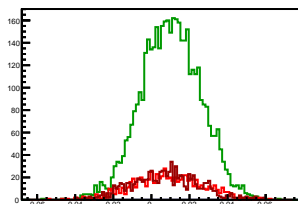
Cycle 9, Asyms

Entries: 1047	Entries: 1015	Entries: 740
Mean: 0.0089 ± 0.0006	Mean: 0.0123 ± 0.0005	Mean: 0.0095 ± 0.0007
Std Dev: 0.0190 ± 0.0004	Std Dev: 0.0155 ± 0.0003	Std Dev: 0.0184 ± 0.0005



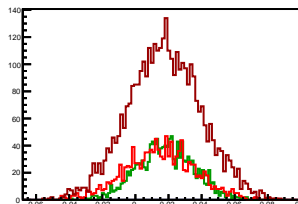
Cycle 10, Asyms

Entries: 717	Entries: 4321	Entries: 885
Mean: 0.0084 ± 0.0007	Mean: 0.0102 ± 0.0002	Mean: 0.0073 ± 0.0006
Std Dev: 0.0184 ± 0.0005	Std Dev: 0.0156 ± 0.0002	Std Dev: 0.0177 ± 0.0004



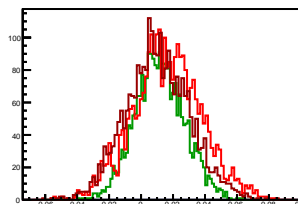
Cycle 11, Asyms

Entries: 1266	Entries: 1362	Entries: 3735
Mean: 0.0149 ± 0.0006	Mean: 0.0183 ± 0.0005	Mean: 0.0175 ± 0.0004
Std Dev: 0.0211 ± 0.0004	Std Dev: 0.0170 ± 0.0003	Std Dev: 0.0221 ± 0.0003



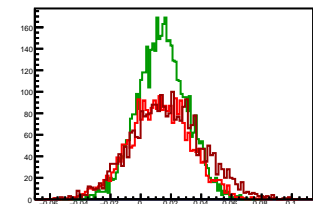
Cycle 12, Asyms

Entries: 2966	Entries: 2402	Entries: 2622
Mean: 0.0162 ± 0.0004	Mean: 0.0117 ± 0.0003	Mean: 0.0103 ± 0.0004
Std Dev: 0.0214 ± 0.0003	Std Dev: 0.0156 ± 0.0002	Std Dev: 0.0200 ± 0.0003



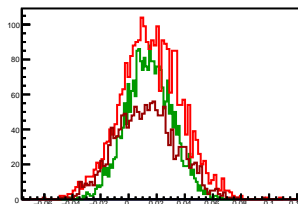
Cycle 13, Asyms

Entries: 2654	Entries: 4648	Entries: 2834
Mean: 0.0126 ± 0.0004	Mean: 0.0143 ± 0.0002	Mean: 0.0176 ± 0.0004
Std Dev: 0.0203 ± 0.0003	Std Dev: 0.0164 ± 0.0002	Std Dev: 0.0236 ± 0.0003



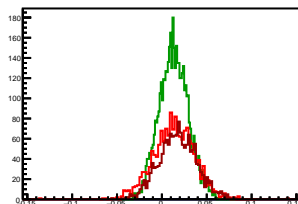
Cycle 14, Asyms

Entries: 2757	Entries: 2591	Entries: 1591
Mean: 0.0158 ± 0.0004	Mean: 0.0145 ± 0.0003	Mean: 0.0127 ± 0.0005
Std Dev: 0.0216 ± 0.0003	Std Dev: 0.0163 ± 0.0002	Std Dev: 0.0216 ± 0.0004



Cycle 15, Asyms

Entries: 1599	Entries: 4666	Entries: 1516
Mean: 0.0131 ± 0.0006	Mean: 0.0131 ± 0.0002	Mean: 0.0177 ± 0.0005
Std Dev: 0.0232 ± 0.0004	Std Dev: 0.0162 ± 0.0002	Std Dev: 0.0211 ± 0.0004



Cycle 16, Asyms

Entries: 1494	Entries: 1882	Entries: 2810
Mean: 0.0128 ± 0.0005	Mean: 0.0111 ± 0.0004	Mean: 0.0121 ± 0.0004
Std Dev: 0.0201 ± 0.0004	Std Dev: 0.0165 ± 0.0003	Std Dev: 0.0227 ± 0.0003

