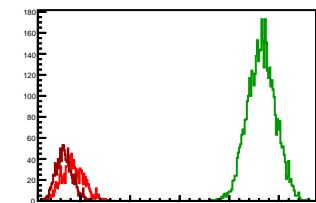


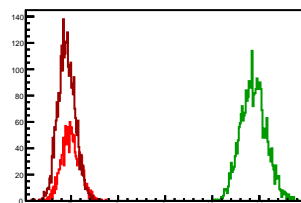
Cycle 1, PosHel

Entries: 1260	Entries: 4674	Entries: 1583
Mean: 6.8450 +/- 0.0065	Mean: 10.6492 +/- 0.0041	Mean: 6.6726 +/- 0.0042
Std Dev: 0.2300 +/- 0.0046	Std Dev: 0.2820 +/- 0.0029	Std Dev: 0.1662 +/- 0.0030



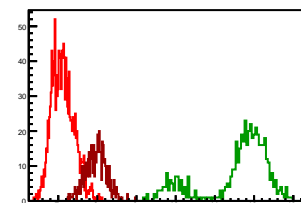
Cycle 2, PosHel

Entries: 1600	Entries: 2914	Entries: 3150
Mean: 6.9968 +/- 0.0049	Mean: 10.8767 +/- 0.0050	Mean: 6.9051 +/- 0.0033
Std Dev: 0.1956 +/- 0.0035	Std Dev: 0.2710 +/- 0.0036	Std Dev: 0.1847 +/- 0.0023



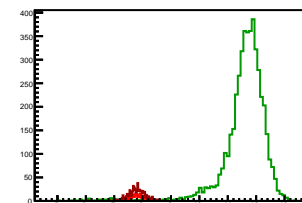
Cycle 3, PosHel

Entries: 1435	Entries: 513	Entries: 478
Mean: 7.1183 +/- 0.0075	Mean: 11.5819 +/- 0.0373	Mean: 7.9685 +/- 0.0123
Std Dev: 0.2844 +/- 0.0053	Std Dev: 0.8458 +/- 0.0264	Std Dev: 0.2690 +/- 0.0087



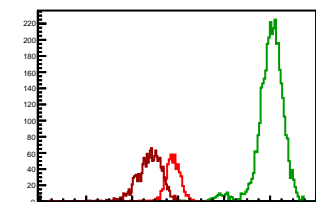
Cycle 4, PosHel

Entries: 472	Entries: 4663	Entries: 575
Mean: 7.8436 +/- 0.0126	Mean: 11.5907 +/- 0.0115	Mean: 7.7919 +/- 0.0125
Std Dev: 0.2735 +/- 0.0089	Std Dev: 0.7820 +/- 0.0081	Std Dev: 0.3008 +/- 0.0099



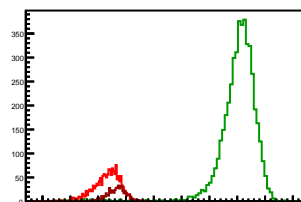
Cycle 5, PosHel

Entries: 572	Entries: 3729	Entries: 1610
Mean: 7.7659 +/- 0.0165	Mean: 12.0200 +/- 0.0095	Mean: 6.7439 +/- 0.0134
Std Dev: 0.3935 +/- 0.0116	Std Dev: 0.5828 +/- 0.0067	Std Dev: 0.5368 +/- 0.0095



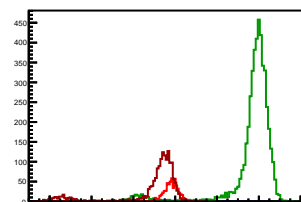
Cycle 6, PosHel

Entries: 1611	Entries: 4688	Entries: 584
Mean: 7.2917 +/- 0.0122	Mean: 12.0191 +/- 0.0110	Mean: 7.6565 +/- 0.0152
Std Dev: 0.4898 +/- 0.0086	Std Dev: 0.7512 +/- 0.0078	Std Dev: 0.3668 +/- 0.0107



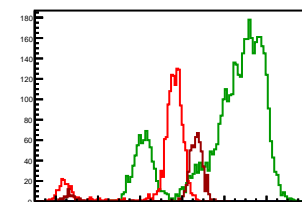
Cycle 7, PosHel

Entries: 580	Entries: 4711	Entries: 1605
Mean: 7.7742 +/- 0.0199	Mean: 11.6737 +/- 0.0174	Mean: 6.8904 +/- 0.0382
Std Dev: 0.4801 +/- 0.0141	Std Dev: 1.1939 +/- 0.0123	Std Dev: 1.5296 +/- 0.0270



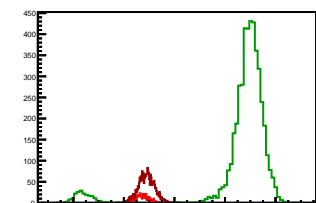
Cycle 8, PosHel

Entries: 1604	Entries: 4634	Entries: 593
Mean: 6.9881 +/- 0.0430	Mean: 10.0709 +/- 0.0285	Mean: 8.1565 +/- 0.0699
Std Dev: 1.7208 +/- 0.0304	Std Dev: 1.9380 +/- 0.0201	Std Dev: 1.7021 +/- 0.0494



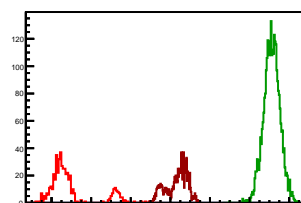
Cycle 9, PosHel

Entries: 586	Entries: 4570	Entries: 2292
Mean: 8.7040 +/- 0.0107	Mean: 12.6669 +/- 0.0211	Mean: 8.8904 +/- 0.0067
Std Dev: 0.2601 +/- 0.0076	Std Dev: 1.4264 +/- 0.0149	Std Dev: 0.3184 +/- 0.0047



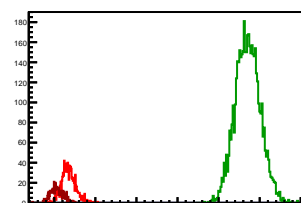
Cycle 10, PosHel

Entries: 496	Entries: 2944	Entries: 997
Mean: 2.9185 +/- 0.0518	Mean: 13.1188 +/- 0.0075	Mean: 8.3249 +/- 0.0170
Std Dev: 1.1545 +/- 0.0367	Std Dev: 0.4090 +/- 0.0053	Std Dev: 0.5382 +/- 0.0121



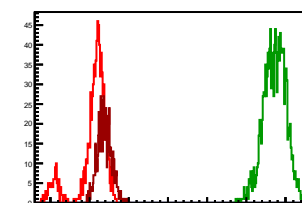
Cycle 11, PosHel

Entries: 1009	Entries: 4676	Entries: 484
Mean: 7.3515 +/- 0.0055	Mean: 11.7073 +/- 0.0044	Mean: 7.0642 +/- 0.0071
Std Dev: 0.1741 +/- 0.0039	Std Dev: 0.3024 +/- 0.0031	Std Dev: 0.1564 +/- 0.0050



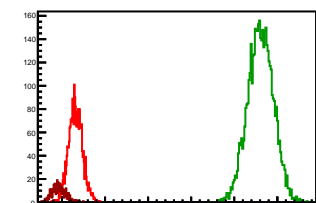
Cycle 12, PosHel

Entries: 869	Entries: 1403	Entries: 782
Mean: 7.0900 +/- 0.0131	Mean: 11.7272 +/- 0.0077	Mean: 7.3829 +/- 0.0063
Std Dev: 0.3865 +/- 0.0093	Std Dev: 0.2879 +/- 0.0054	Std Dev: 0.1772 +/- 0.0045



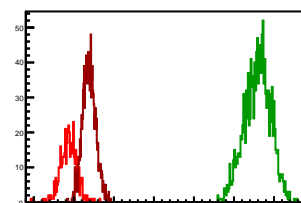
Cycle 13, PosHel

Entries: 2503	Entries: 4594	Entries: 461
Mean: 7.3149 +/- 0.0032	Mean: 11.6099 +/- 0.0044	Mean: 6.9311 +/- 0.0073
Std Dev: 0.1614 +/- 0.0023	Std Dev: 0.2971 +/- 0.0031	Std Dev: 0.1568 +/- 0.0052



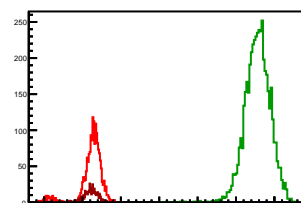
Cycle 14, PosHel

Entries: 447	Entries: 1452	Entries: 1266
Mean: 6.8679 +/- 0.0101	Mean: 11.5871 +/- 0.0086	Mean: 7.3835 +/- 0.0047
Std Dev: 0.2126 +/- 0.0071	Std Dev: 0.3260 +/- 0.0061	Std Dev: 0.1659 +/- 0.0033



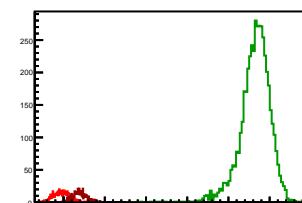
Cycle 15, PosHel

Entries: 1756	Entries: 4711	Entries: 498
Mean: 7.2346 +/- 0.0073	Mean: 11.5640 +/- 0.0047	Mean: 7.2184 +/- 0.0079
Std Dev: 0.3059 +/- 0.0052	Std Dev: 0.3246 +/- 0.0033	Std Dev: 0.1757 +/- 0.0056



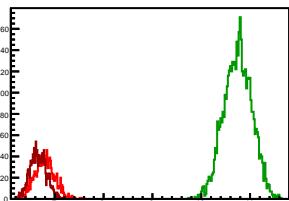
Cycle 16, PosHel

Entries: 559	Entries: 4658	Entries: 565
Mean: 6.9373 +/- 0.0082	Mean: 11.6453 +/- 0.0054	Mean: 7.3891 +/- 0.0067
Std Dev: 0.1948 +/- 0.0058	Std Dev: 0.3667 +/- 0.0038	Std Dev: 0.1592 +/- 0.0047



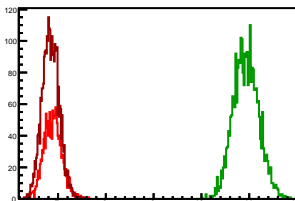
Cycle 1, NegHel

Entries: 1260	Entries: 4674	Entries: 1583
Mean: 6.7957 +/- 0.0057	Mean: 10.7504 +/- 0.0042	Mean: 6.6599 +/- 0.0042
Std Dev: 0.2014 +/- 0.0040	Std Dev: 0.2852 +/- 0.0029	Std Dev: 0.1668 +/- 0.0030



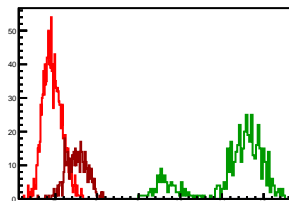
Cycle 2, NegHel

Entries: 1600	Entries: 2914	Entries: 3150
Mean: 6.8915 +/- 0.0047	Mean: 10.9308 +/- 0.0049	Mean: 6.8455 +/- 0.0032
Std Dev: 0.1877 +/- 0.0033	Std Dev: 0.2655 +/- 0.0035	Std Dev: 0.1774 +/- 0.0022



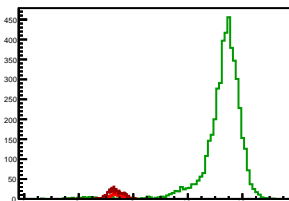
Cycle 3, NegHel

Entries: 1435	Entries: 513	Entries: 478
Mean: 6.9346 +/- 0.0060	Mean: 11.2584 +/- 0.0366	Mean: 7.5021 +/- 0.0115
Std Dev: 0.2273 +/- 0.0042	Std Dev: 0.8286 +/- 0.0259	Std Dev: 0.2512 +/- 0.0081



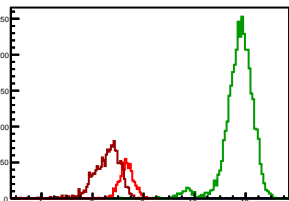
Cycle 4, NegHel

Entries: 472	Entries: 4663	Entries: 575
Mean: 7.3974 +/- 0.0117	Mean: 11.2780 +/- 0.0113	Mean: 7.3333 +/- 0.0115
Std Dev: 0.2540 +/- 0.0083	Std Dev: 0.7718 +/- 0.0080	Std Dev: 0.2756 +/- 0.0091



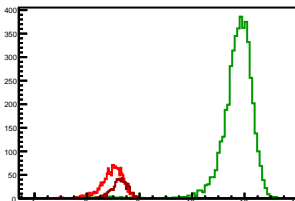
Cycle 5, NegHel

Entries: 572	Entries: 3729	Entries: 1610
Mean: 7.3167 +/- 0.0147	Mean: 11.7373 +/- 0.0095	Mean: 6.5643 +/- 0.0128
Std Dev: 0.3510 +/- 0.0104	Std Dev: 0.5800 +/- 0.0067	Std Dev: 0.5133 +/- 0.0090



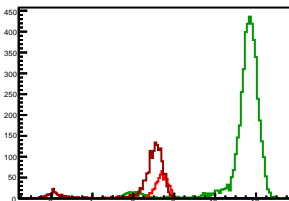
Cycle 6, NegHel

Entries: 1611	Entries: 4688	Entries: 584
Mean: 6.9441 +/- 0.0109	Mean: 11.7013 +/- 0.0108	Mean: 7.2367 +/- 0.0146
Std Dev: 0.4366 +/- 0.0077	Std Dev: 0.7429 +/- 0.0077	Std Dev: 0.3518 +/- 0.0103



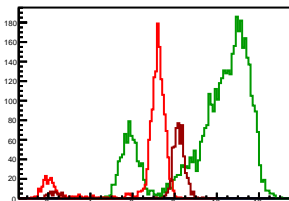
Cycle 7, NegHel

Entries: 580	Entries: 4711	Entries: 1605
Mean: 7.3507 +/- 0.0193	Mean: 11.3843 +/- 0.0173	Mean: 6.4998 +/- 0.0379
Std Dev: 0.4644 +/- 0.0136	Std Dev: 1.1880 +/- 0.0122	Std Dev: 1.5183 +/- 0.0268



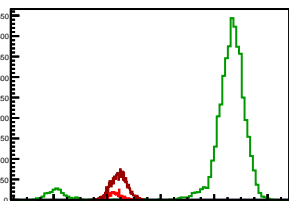
Cycle 8, NegHel

Entries: 1604	Entries: 4634	Entries: 593
Mean: 6.5511 +/- 0.0425	Mean: 9.7554 +/- 0.0283	Mean: 7.7028 +/- 0.0687
Std Dev: 1.7027 +/- 0.0301	Std Dev: 1.9292 +/- 0.0200	Std Dev: 1.6729 +/- 0.0486



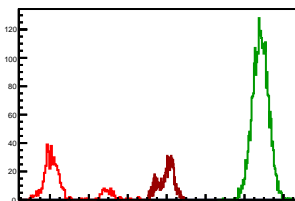
Cycle 9, NegHel

Entries: 586	Entries: 4570	Entries: 2292
Mean: 8.2693 +/- 0.0096	Mean: 12.3586 +/- 0.0210	Mean: 8.4430 +/- 0.0062
Std Dev: 0.2335 +/- 0.0068	Std Dev: 1.4215 +/- 0.0149	Std Dev: 0.2969 +/- 0.0044



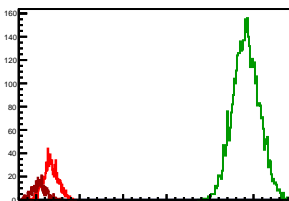
Cycle 10, NegHel

Entries: 496	Entries: 2944	Entries: 997
Mean: 2.5442 +/- 0.0522	Mean: 12.8212 +/- 0.0076	Mean: 7.9782 +/- 0.0124
Std Dev: 1.1627 +/- 0.0369	Std Dev: 0.4135 +/- 0.0054	Std Dev: 0.3924 +/- 0.0088



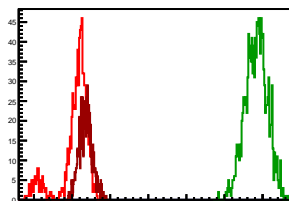
Cycle 11, NegHel

Entries: 1009	Entries: 4676	Entries: 484
Mean: 7.3417 +/- 0.0052	Mean: 11.8307 +/- 0.0044	Mean: 7.0686 +/- 0.0070
Std Dev: 0.1638 +/- 0.0036	Std Dev: 0.3041 +/- 0.0031	Std Dev: 0.1539 +/- 0.0049



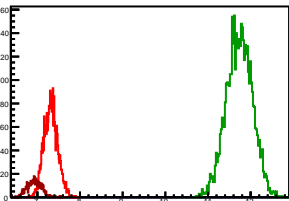
Cycle 12, NegHel

Entries: 869	Entries: 1403	Entries: 782
Mean: 7.0764 +/- 0.0129	Mean: 11.8333 +/- 0.0078	Mean: 7.3583 +/- 0.0063
Std Dev: 0.3813 +/- 0.0091	Std Dev: 0.2933 +/- 0.0055	Std Dev: 0.1751 +/- 0.0044



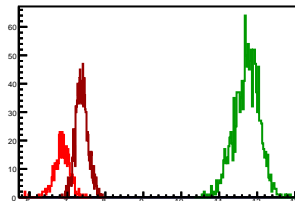
Cycle 13, NegHel

Entries: 2503	Entries: 4594	Entries: 461
Mean: 7.3169 +/- 0.0032	Mean: 11.7337 +/- 0.0045	Mean: 6.9346 +/- 0.0076
Std Dev: 0.1605 +/- 0.0023	Std Dev: 0.3027 +/- 0.0032	Std Dev: 0.1627 +/- 0.0054



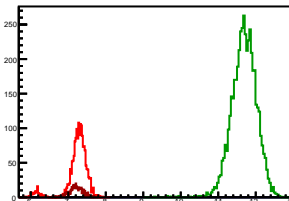
Cycle 14, NegHel

Entries: 447	Entries: 1452	Entries: 1266
Mean: 6.8497 +/- 0.0100	Mean: 11.7250 +/- 0.0087	Mean: 7.3821 +/- 0.0047
Std Dev: 0.2108 +/- 0.0071	Std Dev: 0.3314 +/- 0.0061	Std Dev: 0.1655 +/- 0.0033



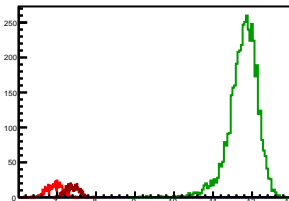
Cycle 15, NegHel

Entries: 1756	Entries: 4711	Entries: 498
Mean: 7.2371 +/- 0.0073	Mean: 11.6885 +/- 0.0048	Mean: 7.2072 +/- 0.0084
Std Dev: 0.3050 +/- 0.0051	Std Dev: 0.3318 +/- 0.0034	Std Dev: 0.1865 +/- 0.0059



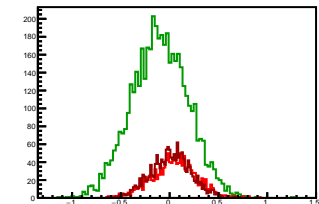
Cycle 16, NegHel

Entries: 559	Entries: 4658	Entries: 565
Mean: 6.9346 +/- 0.0083	Mean: 11.7706 +/- 0.0055	Mean: 7.3869 +/- 0.0068
Std Dev: 0.1970 +/- 0.0059	Std Dev: 0.3734 +/- 0.0039	Std Dev: 0.1621 +/- 0.0048



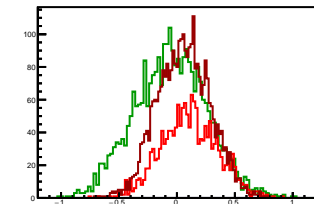
Cycle 1, Diffs

Entries: 1260	Entries: 4674	Entries: 1583
Mean: 0.0493 +/- 0.0065	Mean: -0.1012 +/- 0.0042	Mean: 0.0127 +/- 0.0052
Std Dev: 0.2304 +/- 0.0046	Std Dev: 0.2890 +/- 0.0030	Std Dev: 0.2068 +/- 0.0037



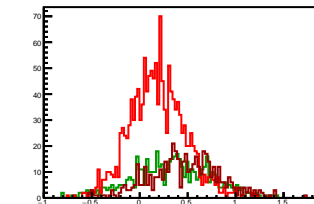
Cycle 2, Diffs

Entries: 1600	Entries: 2914	Entries: 3150
Mean: 0.1053 +/- 0.0061	Mean: -0.0541 +/- 0.0057	Mean: 0.0595 +/- 0.0040
Std Dev: 0.2438 +/- 0.0043	Std Dev: 0.3099 +/- 0.0041	Std Dev: 0.2263 +/- 0.0029



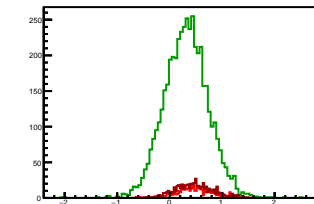
Cycle 3, Diffs

Entries: 1435	Entries: 513	Entries: 478
Mean: 0.1637 +/- 0.0076	Mean: 0.3235 +/- 0.0179	Mean: 0.4663 +/- 0.0169
Std Dev: 0.2866 +/- 0.0054	Std Dev: 0.4059 +/- 0.0127	Std Dev: 0.3693 +/- 0.0119



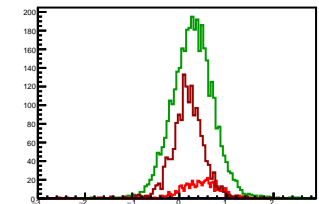
Cycle 4, Diffs

Entries: 472	Entries: 4663	Entries: 575
Mean: 0.4461 +/- 0.0148	Mean: 0.3128 +/- 0.0061	Mean: 0.4586 +/- 0.0147
Std Dev: 0.3207 +/- 0.0104	Std Dev: 0.4167 +/- 0.0043	Std Dev: 0.3519 +/- 0.0104



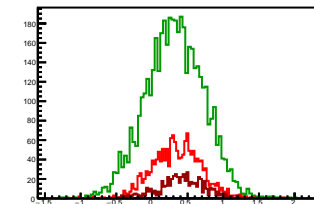
Cycle 5, Diffs

Entries: 572	Entries: 3729	Entries: 1610
Mean: 0.4492 +/- 0.0156	Mean: 0.2826 +/- 0.0071	Mean: 0.1797 +/- 0.0090
Std Dev: 0.3727 +/- 0.0110	Std Dev: 0.4342 +/- 0.0050	Std Dev: 0.3619 +/- 0.0064



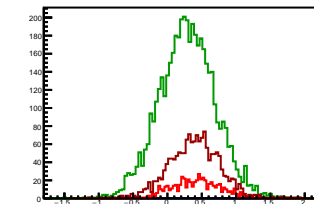
Cycle 6, Diffs

Entries: 1611	Entries: 4688	Entries: 584
Mean: 0.3476 +/- 0.0084	Mean: 0.3179 +/- 0.0060	Mean: 0.4198 +/- 0.0132
Std Dev: 0.3366 +/- 0.0059	Std Dev: 0.4081 +/- 0.0042	Std Dev: 0.3189 +/- 0.0093



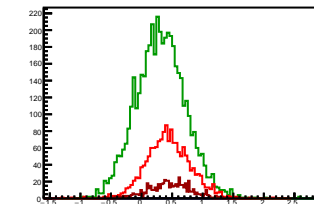
Cycle 7, Diffs

Entries: 580	Entries: 4711	Entries: 1605
Mean: 0.4236 +/- 0.0144	Mean: 0.2894 +/- 0.0059	Mean: 0.3906 +/- 0.0093
Std Dev: 0.3468 +/- 0.0102	Std Dev: 0.4081 +/- 0.0042	Std Dev: 0.3707 +/- 0.0065



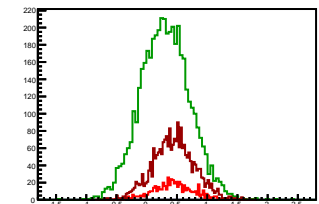
Cycle 8, Diffs

Entries: 1604	Entries: 4634	Entries: 593
Mean: 0.4370 +/- 0.0092	Mean: 0.3154 +/- 0.0059	Mean: 0.4537 +/- 0.0145
Std Dev: 0.3670 +/- 0.0065	Std Dev: 0.4048 +/- 0.0042	Std Dev: 0.3527 +/- 0.0102



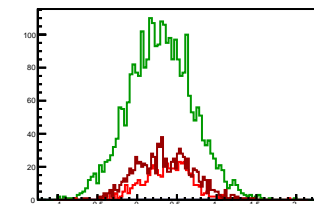
Cycle 9, Diffs

Entries: 586	Entries: 4570	Entries: 2292
Mean: 0.4347 +/- 0.0142	Mean: 0.3083 +/- 0.0060	Mean: 0.4474 +/- 0.0073
Std Dev: 0.3433 +/- 0.0100	Std Dev: 0.4056 +/- 0.0042	Std Dev: 0.3475 +/- 0.0051



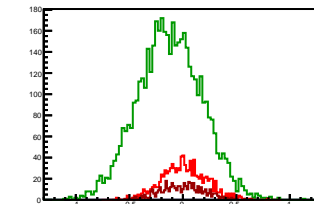
Cycle 10, Diffs

Entries: 496	Entries: 2944	Entries: 997
Mean: 0.3744 +/- 0.0139	Mean: 0.2976 +/- 0.0074	Mean: 0.3467 +/- 0.0113
Std Dev: 0.3094 +/- 0.0098	Std Dev: 0.4038 +/- 0.0053	Std Dev: 0.3558 +/- 0.0080



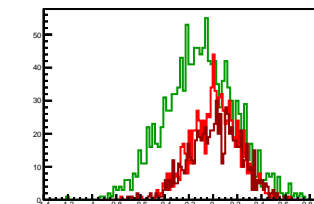
Cycle 11, Diffs

Entries: 1009	Entries: 4676	Entries: 484
Mean: 0.0099 +/- 0.0065	Mean: -0.1235 +/- 0.0044	Mean: -0.0044 +/- 0.0092
Std Dev: 0.2070 +/- 0.0046	Std Dev: 0.2975 +/- 0.0031	Std Dev: 0.2030 +/- 0.0065



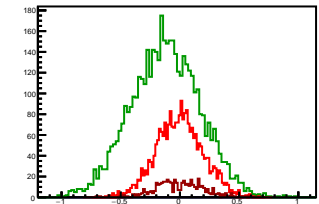
Cycle 12, Diffs

Entries: 869	Entries: 1403	Entries: 782
Mean: 0.0135 +/- 0.0066	Mean: -0.1062 +/- 0.0077	Mean: 0.0247 +/- 0.0076
Std Dev: 0.1935 +/- 0.0046	Std Dev: 0.2892 +/- 0.0055	Std Dev: 0.2117 +/- 0.0054



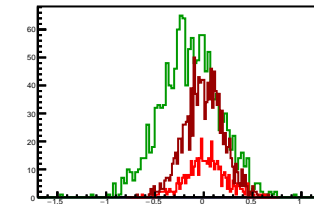
Cycle 13, Diffs

Entries: 2503	Entries: 4594	Entries: 461
Mean: -0.0021 +/- 0.0040	Mean: -0.1238 +/- 0.0043	Mean: -0.0035 +/- 0.0095
Std Dev: 0.1977 +/- 0.0028	Std Dev: 0.2897 +/- 0.0030	Std Dev: 0.2037 +/- 0.0067



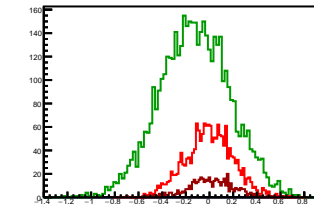
Cycle 14, Diffs

Entries: 447	Entries: 1452	Entries: 1266
Mean: 0.0162 +/- 0.0097	Mean: -0.1379 +/- 0.0075	Mean: 0.0014 +/- 0.0056
Std Dev: 0.2060 +/- 0.0069	Std Dev: 0.2988 +/- 0.0055	Std Dev: 0.1982 +/- 0.0039



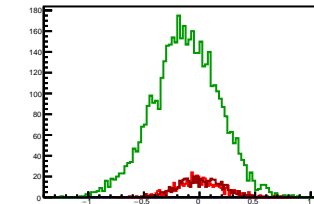
Cycle 15, Diffs

Entries: 1756	Entries: 4711	Entries: 498
Mean: -0.0025 +/- 0.0048	Mean: -0.1245 +/- 0.0043	Mean: 0.0112 +/- 0.0085
Std Dev: 0.2021 +/- 0.0034	Std Dev: 0.2950 +/- 0.0030	Std Dev: 0.1900 +/- 0.0060



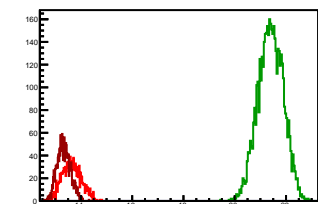
Cycle 16, Diffs

Entries: 559	Entries: 4658	Entries: 565
Mean: 0.0027 +/- 0.0087	Mean: -0.1254 +/- 0.0043	Mean: 0.0022 +/- 0.0085
Std Dev: 0.2052 +/- 0.0061	Std Dev: 0.2949 +/- 0.0031	Std Dev: 0.2032 +/- 0.0060



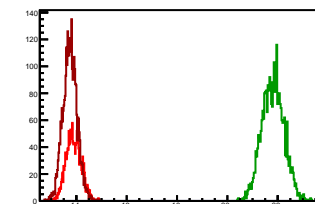
Cycle 1, Sums

Entries: 1260	Entries: 4674	Entries: 1583
Mean: 13.6408 +/- 0.0103	Mean: 21.3996 +/- 0.0071	Mean: 13.3325 +/- 0.0066
Std Dev: 0.3659 +/- 0.0073	Std Dev: 0.4880 +/- 0.0050	Std Dev: 0.2610 +/- 0.0046



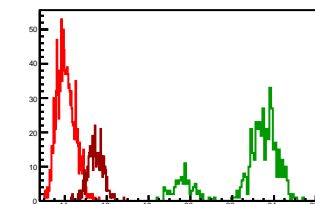
Cycle 2, Sums

Entries: 1600	Entries: 2914	Entries: 3150
Mean: 13.8883 +/- 0.0074	Mean: 21.8076 +/- 0.0061	Mean: 13.7506 +/- 0.0050
Std Dev: 0.2958 +/- 0.0052	Std Dev: 0.4380 +/- 0.0057	Std Dev: 0.2827 +/- 0.0036



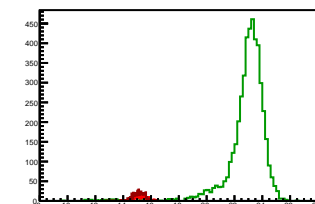
Cycle 3, Sums

Entries: 1435	Entries: 513	Entries: 478
Mean: 14.0530 +/- 0.0113	Mean: 22.8403 +/- 0.0717	Mean: 15.4706 +/- 0.0168
Std Dev: 0.4278 +/- 0.0080	Std Dev: 1.6245 +/- 0.0507	Std Dev: 0.3668 +/- 0.0119



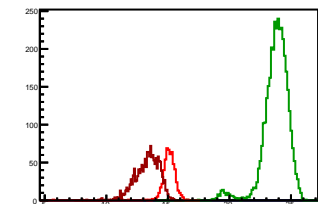
Cycle 4, Sums

Entries: 472	Entries: 4663	Entries: 575
Mean: 15.2410 +/- 0.0193	Mean: 22.8687 +/- 0.0219	Mean: 15.1252 +/- 0.0191
Std Dev: 0.4192 +/- 0.0136	Std Dev: 1.4969 +/- 0.0155	Std Dev: 0.4572 +/- 0.0135



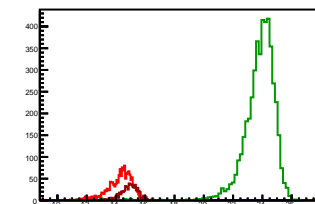
Cycle 5, Sums

Entries: 572	Entries: 3729	Entries: 1610
Mean: 15.0826 +/- 0.0270	Mean: 23.7573 +/- 0.0177	Mean: 13.3082 +/- 0.0246
Std Dev: 0.6459 +/- 0.0191	Std Dev: 1.0787 +/- 0.0125	Std Dev: 0.9861 +/- 0.0174



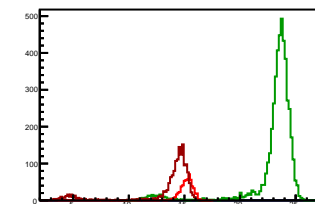
Cycle 6, Sums

Entries: 1611	Entries: 4688	Entries: 584
Mean: 14.2358 +/- 0.0215	Mean: 23.7204 +/- 0.0210	Mean: 14.8932 +/- 0.0267
Std Dev: 0.8647 +/- 0.0152	Std Dev: 1.4372 +/- 0.0148	Std Dev: 0.6441 +/- 0.0188



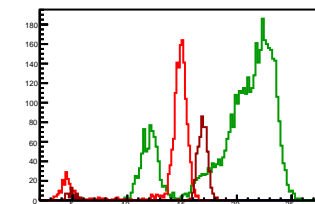
Cycle 7, Sums

Entries: 580	Entries: 4711	Entries: 1605
Mean: 15.1249 +/- 0.0365	Mean: 23.0580 +/- 0.0342	Mean: 13.3902 +/- 0.0755
Std Dev: 0.8787 +/- 0.0258	Std Dev: 2.3467 +/- 0.0242	Std Dev: 3.0253 +/- 0.0534



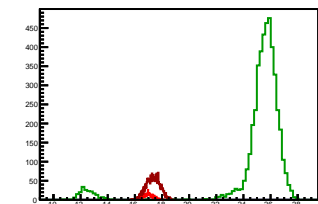
Cycle 8, Sums

Entries: 1604	Entries: 4634	Entries: 593
Mean: 13.5392 +/- 0.0850	Mean: 19.8263 +/- 0.0565	Mean: 15.8593 +/- 0.1378
Std Dev: 3.4039 +/- 0.0601	Std Dev: 3.8459 +/- 0.0399	Std Dev: 3.3567 +/- 0.0975



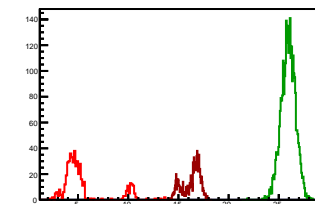
Cycle 9, Sums

Entries: 586	Entries: 4570	Entries: 2292
Mean: 16.9732 +/- 0.0147	Mean: 25.0255 +/- 0.0417	Mean: 17.3333 +/- 0.0106
Std Dev: 0.3557 +/- 0.0104	Std Dev: 2.8189 +/- 0.0295	Std Dev: 0.5083 +/- 0.0075



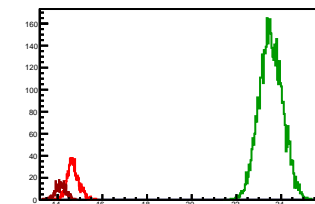
Cycle 10, Sums

Entries: 496	Entries: 2944	Entries: 997
Mean: 5.4627 +/- 0.1031	Mean: 25.9400 +/- 0.0132	Mean: 16.3031 +/- 0.0276
Std Dev: 2.2964 +/- 0.0729	Std Dev: 0.7166 +/- 0.0093	Std Dev: 0.8722 +/- 0.0195



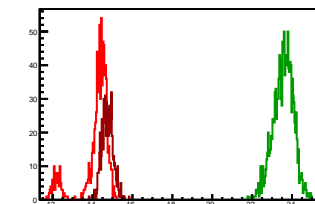
Cycle 11, Sums

Entries: 1009	Entries: 4676	Entries: 484
Mean: 14.6932 +/- 0.0084	Mean: 23.5380 +/- 0.0077	Mean: 14.1329 +/- 0.0107
Std Dev: 0.2673 +/- 0.0059	Std Dev: 0.5285 +/- 0.0055	Std Dev: 0.2346 +/- 0.0075



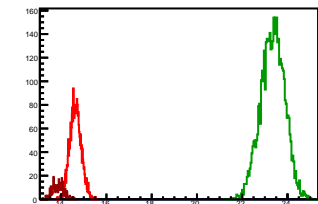
Cycle 12, Sums

Entries: 869	Entries: 1403	Entries: 782
Mean: 14.1664 +/- 0.0252	Mean: 23.5605 +/- 0.0135	Mean: 14.7412 +/- 0.0101
Std Dev: 0.7430 +/- 0.0178	Std Dev: 0.5042 +/- 0.0095	Std Dev: 0.2815 +/- 0.0071



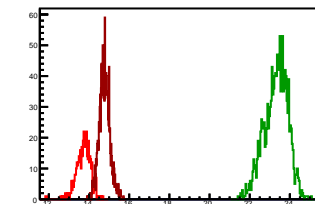
Cycle 13, Sums

Entries: 2503	Entries: 4594	Entries: 461
Mean: 14.6318 +/- 0.0051	Mean: 23.3436 +/- 0.0077	Mean: 13.8658 +/- 0.0115
Std Dev: 0.2540 +/- 0.0036	Std Dev: 0.5253 +/- 0.0055	Std Dev: 0.2462 +/- 0.0081



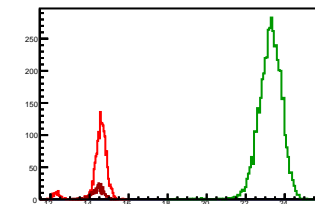
Cycle 14, Sums

Entries: 447	Entries: 1452	Entries: 1266
Mean: 13.7176 +/- 0.0175	Mean: 23.3121 +/- 0.0154	Mean: 14.7657 +/- 0.0075
Std Dev: 0.3700 +/- 0.0124	Std Dev: 0.5856 +/- 0.0109	Std Dev: 0.2656 +/- 0.0053



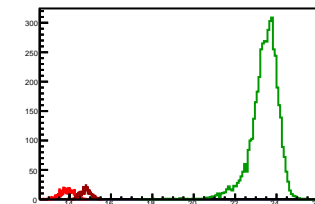
Cycle 15, Sums

Entries: 1756	Entries: 4711	Entries: 498
Mean: 14.4717 +/- 0.0138	Mean: 23.2525 +/- 0.0085	Mean: 14.4256 +/- 0.0138
Std Dev: 0.5765 +/- 0.0097	Std Dev: 0.5863 +/- 0.0060	Std Dev: 0.3086 +/- 0.0098



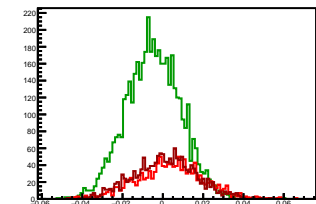
Cycle 16, Sums

Entries: 559	Entries: 4658	Entries: 565
Mean: 13.8719 +/- 0.0141	Mean: 23.4159 +/- 0.0099	Mean: 14.7760 +/- 0.0105
Std Dev: 0.3338 +/- 0.0100	Std Dev: 0.6788 +/- 0.0070	Std Dev: 0.2488 +/- 0.0074



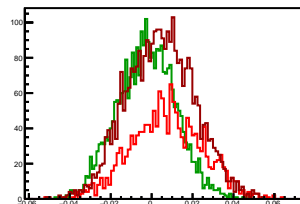
Cycle 1, Asyms

Entries: 1260	Entries: 4674	Entries: 1583
Mean: 0.0036 +/- 0.0005	Mean: -0.0047 +/- 0.0002	Mean: 0.0010 +/- 0.0004
Std Dev: 0.0168 +/- 0.0003	Std Dev: 0.0135 +/- 0.0001	Std Dev: 0.0155 +/- 0.0003



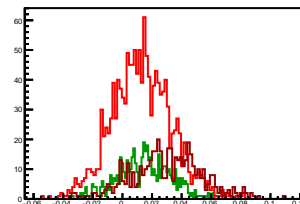
Cycle 2, Asyms

Entries: 1600	Entries: 2914	Entries: 3150
Mean: 0.0076 +/- 0.0004	Mean: -0.0025 +/- 0.0003	Mean: 0.0043 +/- 0.0003
Std Dev: 0.0175 +/- 0.0003	Std Dev: 0.0142 +/- 0.0002	Std Dev: 0.0164 +/- 0.0002



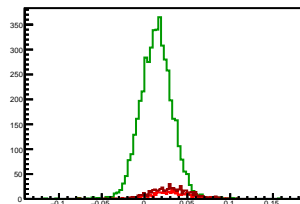
Cycle 3, Asyms

Entries: 1435	Entries: 513	Entries: 478
Mean: 0.0129 +/- 0.0005	Mean: 0.0142 +/- 0.0008	Mean: 0.0301 +/- 0.0011
Std Dev: 0.0202 +/- 0.0004	Std Dev: 0.0178 +/- 0.0006	Std Dev: 0.0239 +/- 0.0008



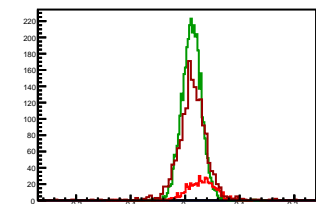
Cycle 4, Asyms

Entries: 472	Entries: 4663	Entries: 575
Mean: 0.0293 +/- 0.0010	Mean: 0.0137 +/- 0.0003	Mean: 0.0303 +/- 0.0010
Std Dev: 0.0210 +/- 0.0007	Std Dev: 0.0189 +/- 0.0002	Std Dev: 0.0234 +/- 0.0007



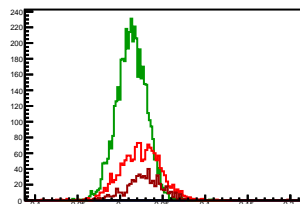
Cycle 5, Asyms

Entries: 572	Entries: 3729	Entries: 1610
Mean: 0.0296 +/- 0.0011	Mean: 0.0119 +/- 0.0003	Mean: 0.0135 +/- 0.0007
Std Dev: 0.0255 +/- 0.0008	Std Dev: 0.0185 +/- 0.0002	Std Dev: 0.0292 +/- 0.0005



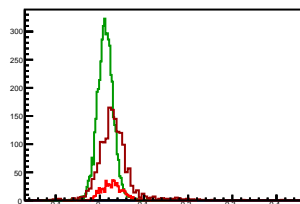
Cycle 6, Asyms

Entries: 1611	Entries: 4688	Entries: 584
Mean: 0.0243 +/- 0.0006	Mean: 0.0135 +/- 0.0003	Mean: 0.0282 +/- 0.0009
Std Dev: 0.0237 +/- 0.0004	Std Dev: 0.0174 +/- 0.0002	Std Dev: 0.0220 +/- 0.0006



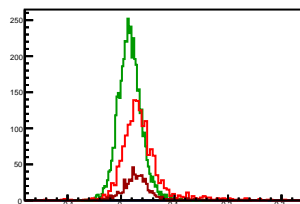
Cycle 7, Asyms

Entries: 580	Entries: 4711	Entries: 1605
Mean: 0.0282 +/- 0.0010	Mean: 0.0127 +/- 0.0003	Mean: 0.0326 +/- 0.0010
Std Dev: 0.0242 +/- 0.0007	Std Dev: 0.0186 +/- 0.0002	Std Dev: 0.0403 +/- 0.0007



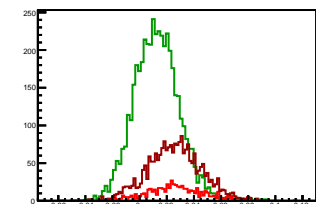
Cycle 8, Asyms

Entries: 1604	Entries: 4634	Entries: 593
Mean: 0.0371 +/- 0.0010	Mean: 0.0166 +/- 0.0003	Mean: 0.0313 +/- 0.0012
Std Dev: 0.0410 +/- 0.0007	Std Dev: 0.0221 +/- 0.0002	Std Dev: 0.0303 +/- 0.0009



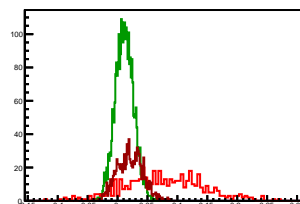
Cycle 9, Asyms

Entries: 586	Entries: 4570	Entries: 2292
Mean: 0.0256 +/- 0.0008	Mean: 0.0126 +/- 0.0003	Mean: 0.0258 +/- 0.0004
Std Dev: 0.0202 +/- 0.0006	Std Dev: 0.0169 +/- 0.0002	Std Dev: 0.0200 +/- 0.0003



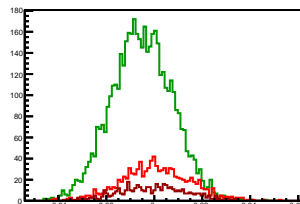
Cycle 10, Asyms

Entries: 496	Entries: 2944	Entries: 997
Mean: 0.0772 +/- 0.0030	Mean: 0.0115 +/- 0.0003	Mean: 0.0208 +/- 0.0007
Std Dev: 0.0662 +/- 0.0021	Std Dev: 0.0156 +/- 0.0002	Std Dev: 0.0213 +/- 0.0005



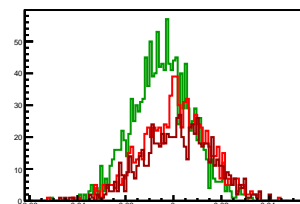
Cycle 11, Asyms

Entries: 1009	Entries: 4676	Entries: 484
Mean: 0.0007 +/- 0.0004	Mean: -0.0052 +/- 0.0002	Mean: -0.0003 +/- 0.0007
Std Dev: 0.0141 +/- 0.0003	Std Dev: 0.0126 +/- 0.0001	Std Dev: 0.0143 +/- 0.0005



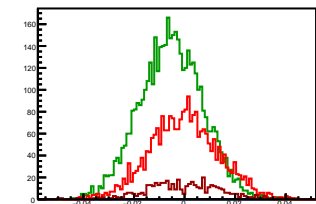
Cycle 12, Asyms

Entries: 869	Entries: 1403	Entries: 782
Mean: 0.0009 +/- 0.0005	Mean: -0.0045 +/- 0.0003	Mean: 0.0017 +/- 0.0005
Std Dev: 0.0137 +/- 0.0003	Std Dev: 0.0123 +/- 0.0002	Std Dev: 0.0143 +/- 0.0004



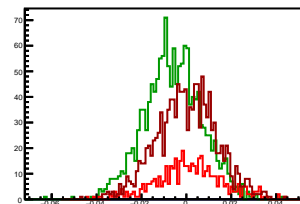
Cycle 13, Asyms

Entries: 2503	Entries: 4594	Entries: 461
Mean: -0.0001 +/- 0.0003	Mean: -0.0053 +/- 0.0002	Mean: -0.0002 +/- 0.0007
Std Dev: 0.0135 +/- 0.0002	Std Dev: 0.0124 +/- 0.0001	Std Dev: 0.0146 +/- 0.0005



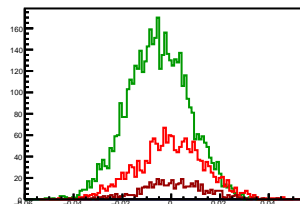
Cycle 14, Asyms

Entries: 447	Entries: 1452	Entries: 1266
Mean: 0.0013 +/- 0.0007	Mean: -0.0059 +/- 0.0003	Mean: 0.0001 +/- 0.0004
Std Dev: 0.0149 +/- 0.0005	Std Dev: 0.0128 +/- 0.0002	Std Dev: 0.0134 +/- 0.0003



Cycle 15, Asyms

Entries: 1756	Entries: 4711	Entries: 498
Mean: -0.0002 +/- 0.0003	Mean: -0.0053 +/- 0.0002	Mean: 0.0008 +/- 0.0006
Std Dev: 0.0140 +/- 0.0002	Std Dev: 0.0127 +/- 0.0001	Std Dev: 0.0132 +/- 0.0004



Cycle 16, Asyms

Entries: 559	Entries: 4658	Entries: 565
Mean: 0.0002 +/- 0.0006	Mean: -0.0053 +/- 0.0002	Mean: 0.0002 +/- 0.0006
Std Dev: 0.0148 +/- 0.0004	Std Dev: 0.0126 +/- 0.0001	Std Dev: 0.0137 +/- 0.0004

