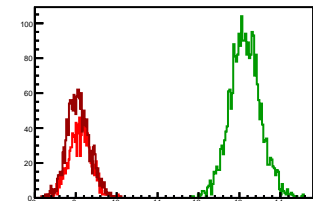


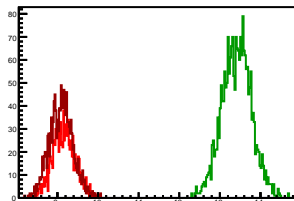
### Cycle 1, PosHel

Entries: 1254	Entries: 2687	Entries: 1767
Mean: 9.1013 +/- 0.0079	Mean: 13.1402 +/- 0.0073	Mean: 9.0651 +/- 0.0068
Std Dev: 0.2781 +/- 0.0056	Std Dev: 0.3782 +/- 0.0052	Std Dev: 0.2840 +/- 0.0048



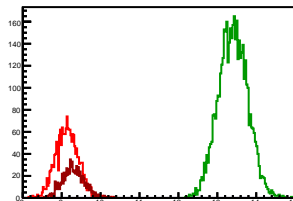
### Cycle 2, PosHel

Entries: 1073	Entries: 2184	Entries: 1339
Mean: 9.1615 +/- 0.0085	Mean: 13.4156 +/- 0.0077	Mean: 9.0909 +/- 0.0079
Std Dev: 0.2771 +/- 0.0060	Std Dev: 0.3621 +/- 0.0055	Std Dev: 0.2885 +/- 0.0056



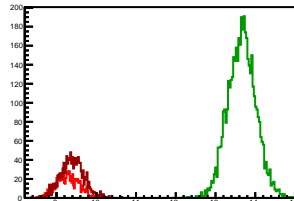
### Cycle 3, PosHel

Entries: 1861	Entries: 4619	Entries: 808
Mean: 9.1388 +/- 0.0067	Mean: 13.4037 +/- 0.0055	Mean: 9.2985 +/- 0.0099
Std Dev: 0.2878 +/- 0.0047	Std Dev: 0.3752 +/- 0.0039	Std Dev: 0.2800 +/- 0.0070



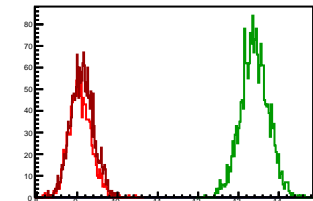
### Cycle 4, PosHel

Entries: 806	Entries: 4631	Entries: 1220
Mean: 9.2851 +/- 0.0100	Mean: 13.6621 +/- 0.0052	Mean: 9.4020 +/- 0.0083
Std Dev: 0.2825 +/- 0.0070	Std Dev: 0.3514 +/- 0.0037	Std Dev: 0.2910 +/- 0.0059



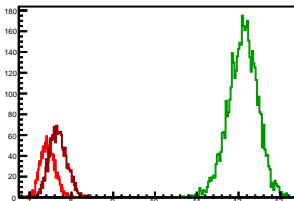
### Cycle 5, PosHel

Entries: 1261	Entries: 2091	Entries: 2089
Mean: 9.0742 +/- 0.0079	Mean: 13.3986 +/- 0.0075	Mean: 9.1247 +/- 0.0062
Std Dev: 0.2798 +/- 0.0056	Std Dev: 0.3449 +/- 0.0053	Std Dev: 0.2849 +/- 0.0044



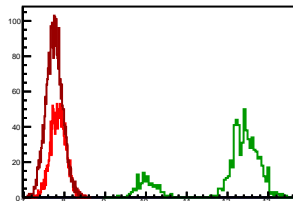
### Cycle 6, PosHel

Entries: 1626	Entries: 4582	Entries: 1890
Mean: 7.4356 +/- 0.0044	Mean: 12.1025 +/- 0.0052	Mean: 7.6774 +/- 0.0048
Std Dev: 0.1755 +/- 0.0031	Std Dev: 0.3532 +/- 0.0037	Std Dev: 0.2101 +/- 0.0034



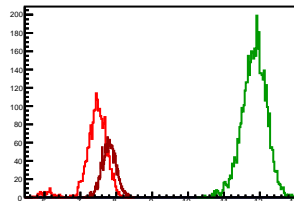
### Cycle 7, PosHel

Entries: 1529	Entries: 747	Entries: 2851
Mean: 7.8544 +/- 0.0048	Mean: 12.0383 +/- 0.0350	Mean: 7.7532 +/- 0.0039
Std Dev: 0.1888 +/- 0.0034	Std Dev: 0.9562 +/- 0.0247	Std Dev: 0.2061 +/- 0.0027



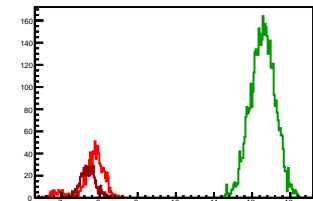
### Cycle 8, PosHel

Entries: 2100	Entries: 4652	Entries: 1949
Mean: 7.4298 +/- 0.0078	Mean: 11.8425 +/- 0.0050	Mean: 7.8029 +/- 0.0044
Std Dev: 0.3578 +/- 0.0055	Std Dev: 0.3400 +/- 0.0035	Std Dev: 0.1951 +/- 0.0031



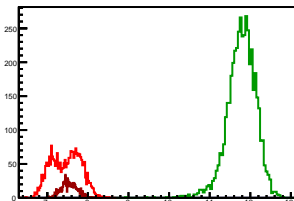
### Cycle 9, PosHel

Entries: 961	Entries: 4679	Entries: 859
Mean: 7.8033 +/- 0.0113	Mean: 12.2785 +/- 0.0047	Mean: 7.7013 +/- 0.0067
Std Dev: 0.3507 +/- 0.0080	Std Dev: 0.3245 +/- 0.0034	Std Dev: 0.1966 +/- 0.0047



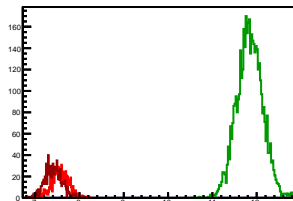
### Cycle 10, PosHel

Entries: 2722	Entries: 4593	Entries: 830
Mean: 7.4611 +/- 0.0068	Mean: 11.7833 +/- 0.0052	Mean: 7.5438 +/- 0.0066
Std Dev: 0.3571 +/- 0.0048	Std Dev: 0.3517 +/- 0.0037	Std Dev: 0.1893 +/- 0.0046



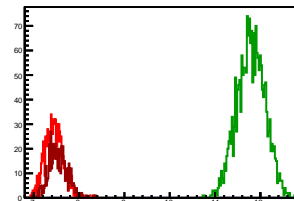
### Cycle 11, PosHel

Entries: 826	Entries: 4483	Entries: 897
Mean: 7.5673 +/- 0.0069	Mean: 11.8406 +/- 0.0043	Mean: 7.4126 +/- 0.0064
Std Dev: 0.1983 +/- 0.0049	Std Dev: 0.2889 +/- 0.0031	Std Dev: 0.1922 +/- 0.0045



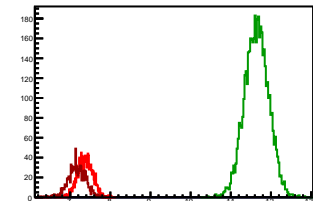
### Cycle 12, PosHel

Entries: 927	Entries: 2105	Entries: 555
Mean: 7.4359 +/- 0.0064	Mean: 11.7937 +/- 0.0067	Mean: 7.5368 +/- 0.0087
Std Dev: 0.1953 +/- 0.0045	Std Dev: 0.3075 +/- 0.0047	Std Dev: 0.2054 +/- 0.0062



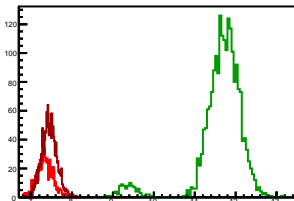
### Cycle 13, PosHel

Entries: 1235	Entries: 4666	Entries: 887
Mean: 7.3739 +/- 0.0054	Mean: 11.6446 +/- 0.0044	Mean: 7.1675 +/- 0.0076
Std Dev: 0.1892 +/- 0.0038	Std Dev: 0.3007 +/- 0.0031	Std Dev: 0.2250 +/- 0.0053



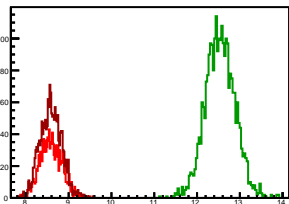
### Cycle 14, PosHel

Entries: 886	Entries: 2084	Entries: 1619
Mean: 7.3503 +/- 0.0064	Mean: 11.6326 +/- 0.0130	Mean: 7.4437 +/- 0.0046
Std Dev: 0.1901 +/- 0.0045	Std Dev: 0.5935 +/- 0.0092	Std Dev: 0.1844 +/- 0.0032



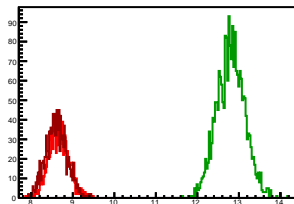
### Cycle 1, NegHel

Entries: 1254	Entries: 2687	Entries: 1767
Mean: 8.5845 +/- 0.0073	Mean: 12.5397 +/- 0.0067	Mean: 8.5839 +/- 0.0060
Std Dev: 0.2570 +/- 0.0051	Std Dev: 0.3483 +/- 0.0048	Std Dev: 0.2503 +/- 0.0042



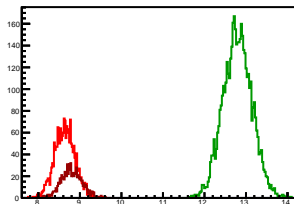
### Cycle 2, NegHel

Entries: 1073	Entries: 2184	Entries: 1339
Mean: 8.6687 +/- 0.0076	Mean: 12.8047 +/- 0.0072	Mean: 8.6058 +/- 0.0069
Std Dev: 0.2487 +/- 0.0054	Std Dev: 0.3357 +/- 0.0051	Std Dev: 0.2529 +/- 0.0049



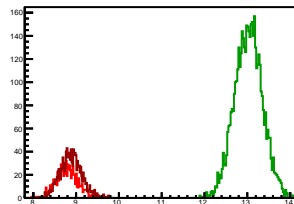
### Cycle 3, NegHel

Entries: 1861	Entries: 4619	Entries: 808
Mean: 8.6412 +/- 0.0058	Mean: 12.7950 +/- 0.0051	Mean: 8.7970 +/- 0.0087
Std Dev: 0.2508 +/- 0.0041	Std Dev: 0.3484 +/- 0.0036	Std Dev: 0.2479 +/- 0.0062



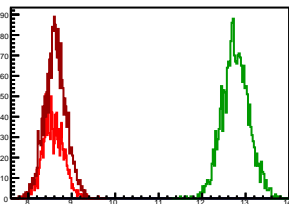
### Cycle 4, NegHel

Entries: 806	Entries: 4631	Entries: 1220
Mean: 8.7895 +/- 0.0088	Mean: 13.0277 +/- 0.0048	Mean: 8.8818 +/- 0.0072
Std Dev: 0.2503 +/- 0.0062	Std Dev: 0.3249 +/- 0.0034	Std Dev: 0.2529 +/- 0.0051



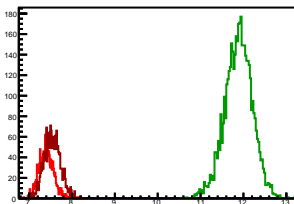
### Cycle 5, NegHel

Entries: 1261	Entries: 2091	Entries: 2089
Mean: 8.5736 +/- 0.0069	Mean: 12.7702 +/- 0.0068	Mean: 8.6244 +/- 0.0054
Std Dev: 0.2438 +/- 0.0049	Std Dev: 0.3099 +/- 0.0048	Std Dev: 0.2481 +/- 0.0038



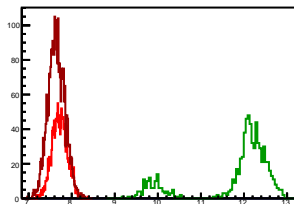
### Cycle 6, NegHel

Entries: 1626	Entries: 4582	Entries: 1890
Mean: 7.4023 +/- 0.0041	Mean: 11.8845 +/- 0.0048	Mean: 7.5418 +/- 0.0045
Std Dev: 0.1664 +/- 0.0029	Std Dev: 0.3223 +/- 0.0034	Std Dev: 0.1936 +/- 0.0031



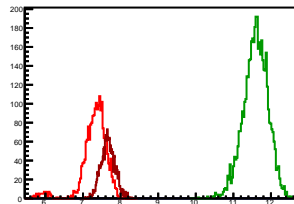
### Cycle 7, NegHel

Entries: 1529	Entries: 747	Entries: 2851
Mean: 7.7198 +/- 0.0046	Mean: 11.8234 +/- 0.0334	Mean: 7.6452 +/- 0.0037
Std Dev: 0.1796 +/- 0.0032	Std Dev: 0.9115 +/- 0.0236	Std Dev: 0.1964 +/- 0.0026



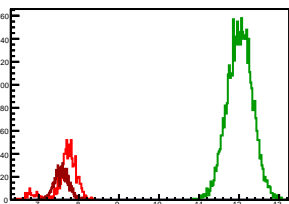
### Cycle 8, NegHel

Entries: 2100	Entries: 4652	Entries: 1949
Mean: 7.3088 +/- 0.0078	Mean: 11.5898 +/- 0.0048	Mean: 7.6645 +/- 0.0042
Std Dev: 0.3571 +/- 0.0055	Std Dev: 0.3273 +/- 0.0034	Std Dev: 0.1861 +/- 0.0030



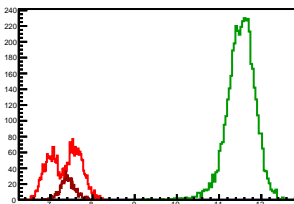
### Cycle 9, NegHel

Entries: 961	Entries: 4679	Entries: 859
Mean: 7.6714 +/- 0.0103	Mean: 12.0180 +/- 0.0047	Mean: 7.5667 +/- 0.0061
Std Dev: 0.3187 +/- 0.0073	Std Dev: 0.3189 +/- 0.0033	Std Dev: 0.1799 +/- 0.0043



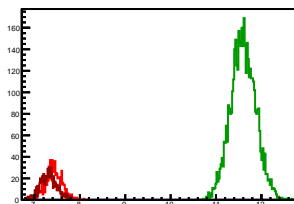
### Cycle 10, NegHel

Entries: 2722	Entries: 4593	Entries: 830
Mean: 7.3356 +/- 0.0068	Mean: 11.5175 +/- 0.0050	Mean: 7.4107 +/- 0.0063
Std Dev: 0.3571 +/- 0.0048	Std Dev: 0.3385 +/- 0.0035	Std Dev: 0.1817 +/- 0.0045



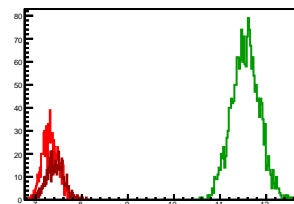
### Cycle 11, NegHel

Entries: 826	Entries: 4483	Entries: 897
Mean: 7.4259 +/- 0.0062	Mean: 11.5987 +/- 0.0041	Mean: 7.3080 +/- 0.0061
Std Dev: 0.1791 +/- 0.0044	Std Dev: 0.2775 +/- 0.0029	Std Dev: 0.1833 +/- 0.0043



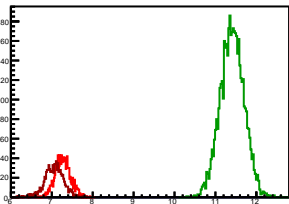
### Cycle 12, NegHel

Entries: 927	Entries: 2105	Entries: 555
Mean: 7.3203 +/- 0.0058	Mean: 11.5543 +/- 0.0065	Mean: 7.4261 +/- 0.0081
Std Dev: 0.1777 +/- 0.0041	Std Dev: 0.3005 +/- 0.0046	Std Dev: 0.1917 +/- 0.0058



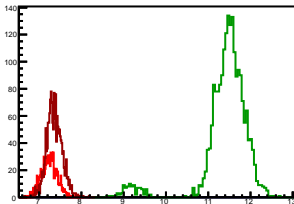
### Cycle 13, NegHel

Entries: 1235	Entries: 4666	Entries: 887
Mean: 7.2699 +/- 0.0054	Mean: 11.4080 +/- 0.0043	Mean: 7.0564 +/- 0.0078
Std Dev: 0.1884 +/- 0.0038	Std Dev: 0.2917 +/- 0.0030	Std Dev: 0.2313 +/- 0.0055



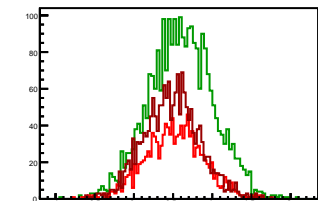
### Cycle 14, NegHel

Entries: 886	Entries: 2084	Entries: 1619
Mean: 7.2395 +/- 0.0063	Mean: 11.4128 +/- 0.0126	Mean: 7.3619 +/- 0.0045
Std Dev: 0.1865 +/- 0.0044	Std Dev: 0.5765 +/- 0.0089	Std Dev: 0.1820 +/- 0.0032



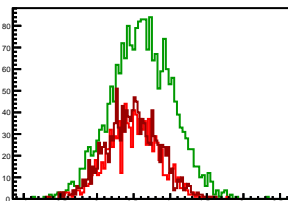
### Cycle 1, Diffs

Entries: 1254	Entries: 2687	Entries: 1767
Mean: 0.5168 +/- 0.0105	Mean: 0.6005 +/- 0.0080	Mean: 0.4812 +/- 0.0085
Std Dev: 0.3725 +/- 0.0074	Std Dev: 0.4123 +/- 0.0056	Std Dev: 0.3564 +/- 0.0060



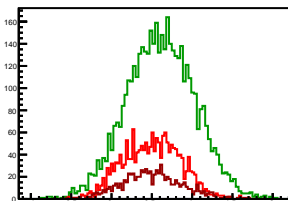
### Cycle 2, Diffs

Entries: 1073	Entries: 2184	Entries: 1339
Mean: 0.4928 +/- 0.0109	Mean: 0.6109 +/- 0.0090	Mean: 0.4851 +/- 0.0099
Std Dev: 0.3575 +/- 0.0077	Std Dev: 0.4213 +/- 0.0064	Std Dev: 0.3607 +/- 0.0070



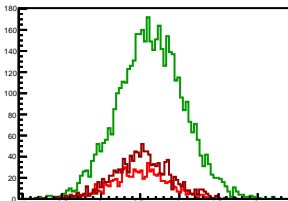
### Cycle 3, Diffs

Entries: 1961	Entries: 4619	Entries: 808
Mean: 0.4976 +/- 0.0062	Mean: 0.6086 +/- 0.0062	Mean: 0.5016 +/- 0.0129
Std Dev: 0.3546 +/- 0.0058	Std Dev: 0.4226 +/- 0.0044	Std Dev: 0.3671 +/- 0.0091



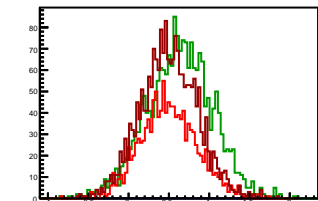
### Cycle 4, Diffs

Entries: 806	Entries: 4631	Entries: 1220
Mean: 0.4957 +/- 0.0128	Mean: 0.6344 +/- 0.0062	Mean: 0.5202 +/- 0.0104
Std Dev: 0.3621 +/- 0.0090	Std Dev: 0.4200 +/- 0.0044	Std Dev: 0.3644 +/- 0.0074



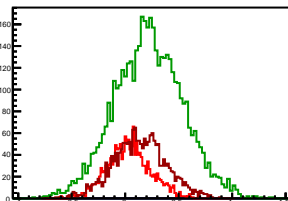
### Cycle 5, Diffs

Entries: 1261	Entries: 2091	Entries: 2089
Mean: 0.5006 +/- 0.0101	Mean: 0.6284 +/- 0.0090	Mean: 0.5003 +/- 0.0077
Std Dev: 0.3601 +/- 0.0072	Std Dev: 0.4129 +/- 0.0064	Std Dev: 0.3536 +/- 0.0055



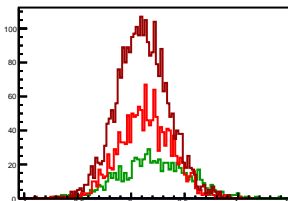
### Cycle 6, Diffs

Entries: 1626	Entries: 4582	Entries: 1890
Mean: 0.0333 +/- 0.0051	Mean: 0.2180 +/- 0.0047	Mean: 0.1356 +/- 0.0056
Std Dev: 0.2045 +/- 0.0036	Std Dev: 0.3187 +/- 0.0033	Std Dev: 0.2447 +/- 0.0040



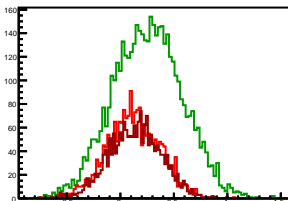
### Cycle 7, Diffs

Entries: 1529	Entries: 747	Entries: 2851
Mean: 0.1346 +/- 0.0063	Mean: 0.2149 +/- 0.0118	Mean: 0.1079 +/- 0.0045
Std Dev: 0.2462 +/- 0.0045	Std Dev: 0.3232 +/- 0.0084	Std Dev: 0.2410 +/- 0.0032



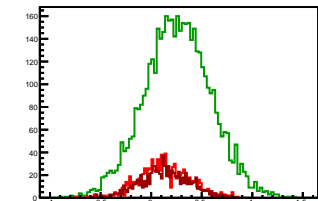
### Cycle 8, Diffs

Entries: 2100	Entries: 4652	Entries: 1949
Mean: 0.1210 +/- 0.0054	Mean: 0.2527 +/- 0.0047	Mean: 0.1384 +/- 0.0055
Std Dev: 0.2459 +/- 0.0038	Std Dev: 0.3227 +/- 0.0033	Std Dev: 0.2427 +/- 0.0039



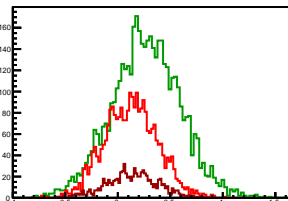
### Cycle 9, Diffs

Entries: 961	Entries: 4679	Entries: 859
Mean: 0.1319 +/- 0.0079	Mean: 0.2605 +/- 0.0048	Mean: 0.1345 +/- 0.0084
Std Dev: 0.2454 +/- 0.0056	Std Dev: 0.3297 +/- 0.0034	Std Dev: 0.2451 +/- 0.0059



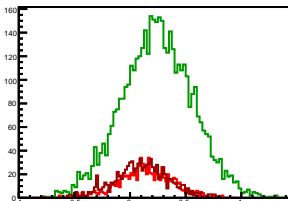
### Cycle 10, Diffs

Entries: 2722	Entries: 4593	Entries: 830
Mean: 0.1256 +/- 0.0048	Mean: 0.2658 +/- 0.0048	Mean: 0.1331 +/- 0.0083
Std Dev: 0.2506 +/- 0.0034	Std Dev: 0.3262 +/- 0.0034	Std Dev: 0.2399 +/- 0.0059



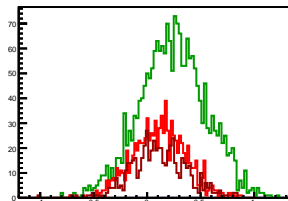
### Cycle 11, Diffs

Entries: 826	Entries: 4483	Entries: 897
Mean: 0.1413 +/- 0.0085	Mean: 0.2419 +/- 0.0047	Mean: 0.1046 +/- 0.0082
Std Dev: 0.2452 +/- 0.0060	Std Dev: 0.3175 +/- 0.0034	Std Dev: 0.2454 +/- 0.0058



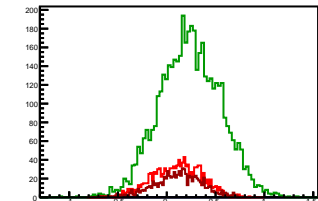
### Cycle 12, Diffs

Entries: 927	Entries: 2105	Entries: 555
Mean: 0.1157 +/- 0.0081	Mean: 0.2394 +/- 0.0068	Mean: 0.1108 +/- 0.0109
Std Dev: 0.2453 +/- 0.0057	Std Dev: 0.3116 +/- 0.0048	Std Dev: 0.2559 +/- 0.0077



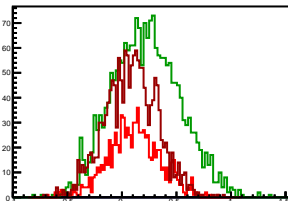
### Cycle 13, Diffs

Entries: 1235	Entries: 4666	Entries: 887
Mean: 0.1040 +/- 0.0070	Mean: 0.2366 +/- 0.0046	Mean: 0.1111 +/- 0.0083
Std Dev: 0.2458 +/- 0.0049	Std Dev: 0.3114 +/- 0.0032	Std Dev: 0.2477 +/- 0.0059



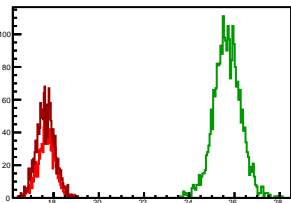
### Cycle 14, Diffs

Entries: 886	Entries: 2084	Entries: 1619
Mean: 0.1108 +/- 0.0082	Mean: 0.2197 +/- 0.0068	Mean: 0.0818 +/- 0.0059
Std Dev: 0.2431 +/- 0.0058	Std Dev: 0.3092 +/- 0.0048	Std Dev: 0.2380 +/- 0.0042



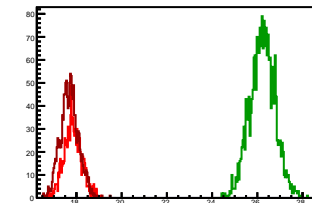
### Cycle 1, Sums

Entries: 1254	Entries: 2687	Entries: 1767
Mean: 17.6859 +/- 0.0109	Mean: 25.6799 +/- 0.0116	Mean: 17.6491 +/- 0.0095
Std Dev: 0.3848 +/- 0.0077	Std Dev: 0.5989 +/- 0.0062	Std Dev: 0.3994 +/- 0.0067



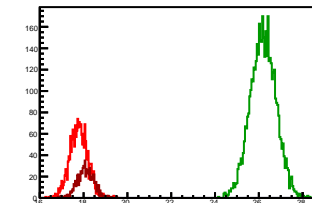
### Cycle 2, Sums

Entries: 1073	Entries: 2184	Entries: 1339
Mean: 17.8302 +/- 0.0118	Mean: 26.2204 +/- 0.0119	Mean: 17.6967 +/- 0.0111
Std Dev: 0.3866 +/- 0.0083	Std Dev: 0.5569 +/- 0.0084	Std Dev: 0.4054 +/- 0.0078



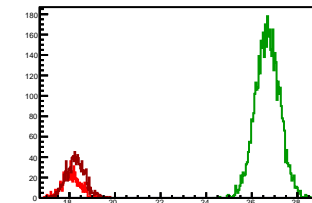
### Cycle 3, Sums

Entries: 1961	Entries: 4619	Entries: 808
Mean: 17.7900 +/- 0.0094	Mean: 26.1987 +/- 0.0087	Mean: 18.0955 +/- 0.0134
Std Dev: 0.4071 +/- 0.0067	Std Dev: 0.5880 +/- 0.0061	Std Dev: 0.3808 +/- 0.0095



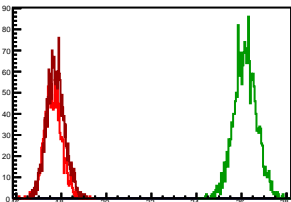
### Cycle 4, Sums

Entries: 806	Entries: 4631	Entries: 1220
Mean: 18.0746 +/- 0.0138	Mean: 26.6897 +/- 0.0078	Mean: 18.2838 +/- 0.0116
Std Dev: 0.3922 +/- 0.0098	Std Dev: 0.5308 +/- 0.0055	Std Dev: 0.4056 +/- 0.0082



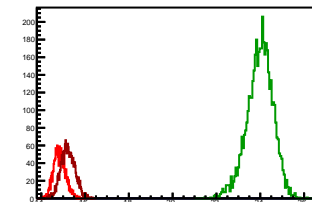
### Cycle 5, Sums

Entries: 1261	Entries: 2091	Entries: 2089
Mean: 17.6478 +/- 0.0108	Mean: 26.1688 +/- 0.0111	Mean: 17.7491 +/- 0.0088
Std Dev: 0.3818 +/- 0.0076	Std Dev: 0.5093 +/- 0.0079	Std Dev: 0.4005 +/- 0.0062



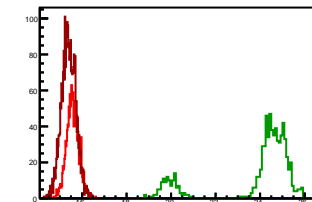
### Cycle 6, Sums

Entries: 1626	Entries: 4582	Entries: 1890
Mean: 14.8378 +/- 0.0068	Mean: 23.9870 +/- 0.0068	Mean: 15.2193 +/- 0.0074
Std Dev: 0.2742 +/- 0.0048	Std Dev: 0.5963 +/- 0.0062	Std Dev: 0.3215 +/- 0.0052



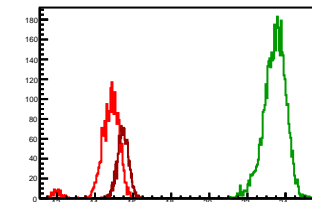
### Cycle 7, Sums

Entries: 1529	Entries: 747	Entries: 2851
Mean: 15.5742 +/- 0.0070	Mean: 23.8617 +/- 0.0073	Mean: 15.3984 +/- 0.0060
Std Dev: 0.2741 +/- 0.0050	Std Dev: 1.8401 +/- 0.0476	Std Dev: 0.3225 +/- 0.0043



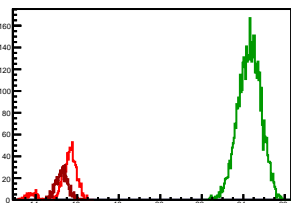
### Cycle 8, Sums

Entries: 2100	Entries: 4652	Entries: 1949
Mean: 14.7387 +/- 0.0146	Mean: 23.4322 +/- 0.0086	Mean: 15.4675 +/- 0.0067
Std Dev: 0.6712 +/- 0.0104	Std Dev: 0.5842 +/- 0.0061	Std Dev: 0.2940 +/- 0.0047



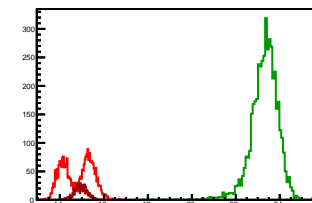
### Cycle 9, Sums

Entries: 961	Entries: 4679	Entries: 859
Mean: 15.4747 +/- 0.0201	Mean: 24.2966 +/- 0.0081	Mean: 15.2680 +/- 0.0098
Std Dev: 0.6237 +/- 0.0142	Std Dev: 0.5526 +/- 0.0057	Std Dev: 0.2863 +/- 0.0069



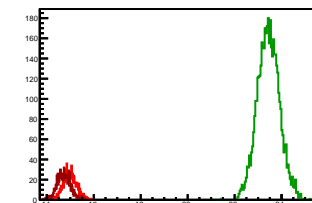
### Cycle 10, Sums

Entries: 2722	Entries: 4593	Entries: 830
Mean: 14.7967 +/- 0.0128	Mean: 23.3008 +/- 0.0090	Mean: 14.9545 +/- 0.0098
Std Dev: 0.6688 +/- 0.0091	Std Dev: 0.6084 +/- 0.0063	Std Dev: 0.2832 +/- 0.0070



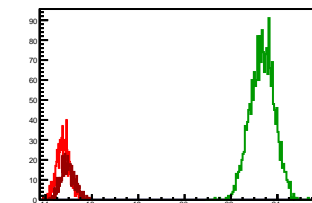
### Cycle 11, Sums

Entries: 826	Entries: 4483	Entries: 897
Mean: 14.9932 +/- 0.0100	Mean: 23.4394 +/- 0.0070	Mean: 14.7206 +/- 0.0095
Std Dev: 0.2876 +/- 0.0071	Std Dev: 0.4691 +/- 0.0050	Std Dev: 0.2843 +/- 0.0067



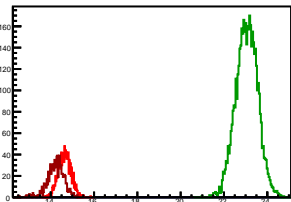
### Cycle 12, Sums

Entries: 927	Entries: 2105	Entries: 555
Mean: 14.7562 +/- 0.0092	Mean: 23.3480 +/- 0.0114	Mean: 14.9629 +/- 0.0129
Std Dev: 0.2815 +/- 0.0065	Std Dev: 0.5222 +/- 0.0080	Std Dev: 0.3039 +/- 0.0091



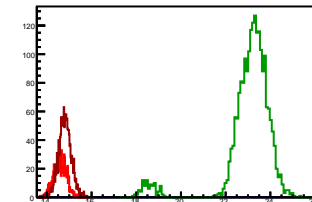
### Cycle 13, Sums

Entries: 1235	Entries: 4666	Entries: 887
Mean: 14.6439 +/- 0.0082	Mean: 23.0526 +/- 0.0074	Mean: 14.2239 +/- 0.0129
Std Dev: 0.2867 +/- 0.0058	Std Dev: 0.5040 +/- 0.0052	Std Dev: 0.3833 +/- 0.0091



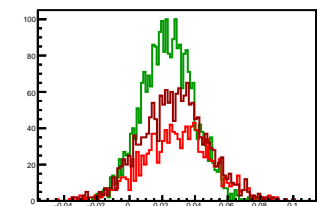
### Cycle 14, Sums

Entries: 886	Entries: 2084	Entries: 1619
Mean: 14.5898 +/- 0.0097	Mean: 23.0454 +/- 0.0247	Mean: 14.8056 +/- 0.0069
Std Dev: 0.2877 +/- 0.0068	Std Dev: 1.1285 +/- 0.0175	Std Dev: 0.2786 +/- 0.0049



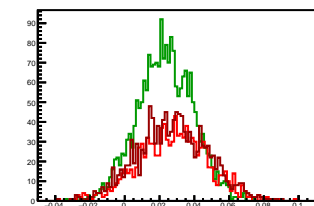
### Cycle 1, Asyms

Entries: 1254	Entries: 2687	Entries: 1767
Mean: 0.0292 +/- 0.0006	Mean: 0.0234 +/- 0.0003	Mean: 0.0272 +/- 0.0005
Std Dev: 0.0210 +/- 0.0004	Std Dev: 0.0160 +/- 0.0002	Std Dev: 0.0201 +/- 0.0003



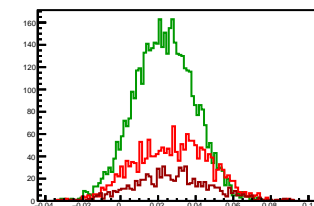
### Cycle 2, Asyms

Entries: 1073	Entries: 2184	Entries: 1339
Mean: 0.0276 +/- 0.0006	Mean: 0.0233 +/- 0.0003	Mean: 0.0274 +/- 0.0006
Std Dev: 0.0200 +/- 0.0004	Std Dev: 0.0160 +/- 0.0002	Std Dev: 0.0203 +/- 0.0004



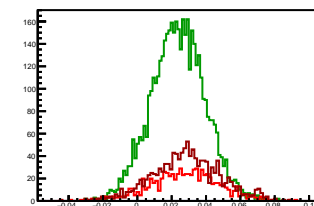
### Cycle 3, Asyms

Entries: 1961	Entries: 4619	Entries: 808
Mean: 0.0279 +/- 0.0005	Mean: 0.0232 +/- 0.0002	Mean: 0.0277 +/- 0.0007
Std Dev: 0.0198 +/- 0.0003	Std Dev: 0.0161 +/- 0.0002	Std Dev: 0.0202 +/- 0.0005



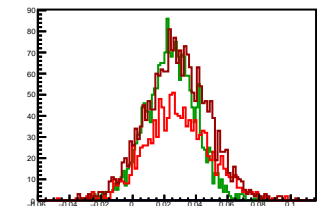
### Cycle 4, Asyms

Entries: 806	Entries: 4631	Entries: 1220
Mean: 0.0274 +/- 0.0007	Mean: 0.0238 +/- 0.0002	Mean: 0.0284 +/- 0.0006
Std Dev: 0.0200 +/- 0.0005	Std Dev: 0.0157 +/- 0.0002	Std Dev: 0.0198 +/- 0.0004



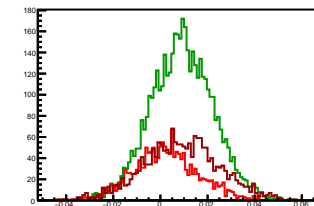
### Cycle 5, Asyms

Entries: 1261	Entries: 2091	Entries: 2089
Mean: 0.0283 +/- 0.0006	Mean: 0.0240 +/- 0.0003	Mean: 0.0281 +/- 0.0004
Std Dev: 0.0203 +/- 0.0004	Std Dev: 0.0157 +/- 0.0002	Std Dev: 0.0198 +/- 0.0003



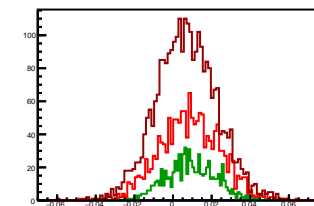
### Cycle 6, Asyms

Entries: 1626	Entries: 4582	Entries: 1890
Mean: 0.0022 +/- 0.0003	Mean: 0.0091 +/- 0.0002	Mean: 0.0089 +/- 0.0004
Std Dev: 0.0138 +/- 0.0002	Std Dev: 0.0133 +/- 0.0001	Std Dev: 0.0160 +/- 0.0003



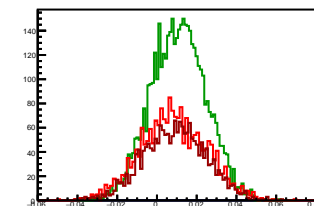
### Cycle 7, Asyms

Entries: 1529	Entries: 747	Entries: 2851
Mean: 0.0086 +/- 0.0004	Mean: 0.0089 +/- 0.0005	Mean: 0.0070 +/- 0.0003
Std Dev: 0.0158 +/- 0.0003	Std Dev: 0.0135 +/- 0.0003	Std Dev: 0.0156 +/- 0.0002



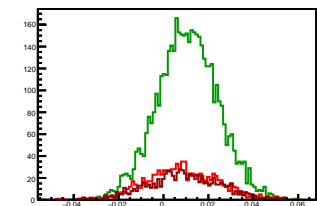
### Cycle 8, Asyms

Entries: 2100	Entries: 4652	Entries: 1949
Mean: 0.0082 +/- 0.0004	Mean: 0.0108 +/- 0.0002	Mean: 0.0089 +/- 0.0004
Std Dev: 0.0167 +/- 0.0003	Std Dev: 0.0138 +/- 0.0001	Std Dev: 0.0157 +/- 0.0003



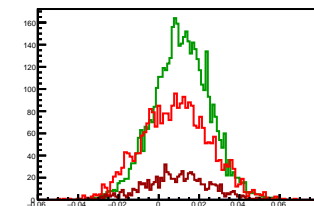
### Cycle 9, Asyms

Entries: 961	Entries: 4679	Entries: 859
Mean: 0.0084 +/- 0.0005	Mean: 0.0107 +/- 0.0002	Mean: 0.0088 +/- 0.0005
Std Dev: 0.0158 +/- 0.0004	Std Dev: 0.0136 +/- 0.0001	Std Dev: 0.0160 +/- 0.0004



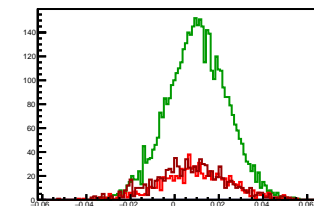
### Cycle 10, Asyms

Entries: 2722	Entries: 4593	Entries: 830
Mean: 0.0085 +/- 0.0003	Mean: 0.0114 +/- 0.0002	Mean: 0.0089 +/- 0.0006
Std Dev: 0.0170 +/- 0.0002	Std Dev: 0.0140 +/- 0.0001	Std Dev: 0.0160 +/- 0.0004



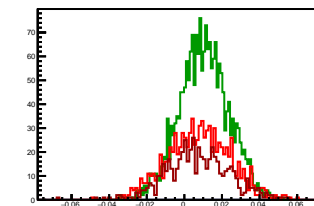
### Cycle 11, Asyms

Entries: 826	Entries: 4483	Entries: 897
Mean: 0.0094 +/- 0.0006	Mean: 0.0103 +/- 0.0002	Mean: 0.0071 +/- 0.0006
Std Dev: 0.0163 +/- 0.0004	Std Dev: 0.0135 +/- 0.0001	Std Dev: 0.0166 +/- 0.0004



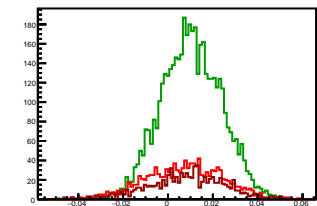
### Cycle 12, Asyms

Entries: 927	Entries: 2105	Entries: 555
Mean: 0.0078 +/- 0.0005	Mean: 0.0103 +/- 0.0003	Mean: 0.0074 +/- 0.0007
Std Dev: 0.0166 +/- 0.0004	Std Dev: 0.0133 +/- 0.0002	Std Dev: 0.0170 +/- 0.0005



### Cycle 13, Asyms

Entries: 1235	Entries: 4666	Entries: 887
Mean: 0.0071 +/- 0.0005	Mean: 0.0103 +/- 0.0002	Mean: 0.0078 +/- 0.0006
Std Dev: 0.0168 +/- 0.0003	Std Dev: 0.0135 +/- 0.0001	Std Dev: 0.0174 +/- 0.0004



### Cycle 14, Asyms

Entries: 886	Entries: 2084	Entries: 1619
Mean: 0.0076 +/- 0.0006	Mean: 0.0095 +/- 0.0003	Mean: 0.0055 +/- 0.0004
Std Dev: 0.0167 +/- 0.0004	Std Dev: 0.0134 +/- 0.0002	Std Dev: 0.0160 +/- 0.0003

