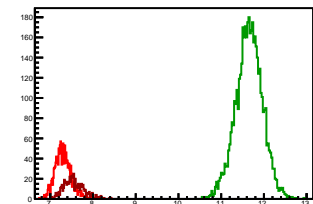


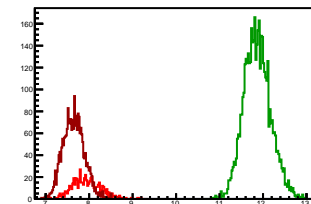
Cycle 1, PosHel

Entries: 1506	Entries: 4635	Entries: 588
Mean: 7.2978 +/- 0.0048	Mean: 11.6527 +/- 0.0046	Mean: 7.5458 +/- 0.0098
Std Dev: 0.1879 +/- 0.0034	Std Dev: 0.3136 +/- 0.0033	Std Dev: 0.2382 +/- 0.0069



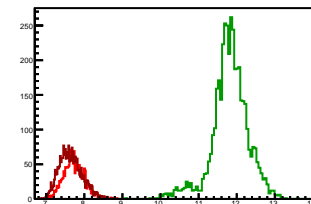
Cycle 2, PosHel

Entries: 586	Entries: 4585	Entries: 2251
Mean: 7.9444 +/- 0.0133	Mean: 11.8663 +/- 0.0046	Mean: 7.6456 +/- 0.0052
Std Dev: 0.3213 +/- 0.0094	Std Dev: 0.3083 +/- 0.0032	Std Dev: 0.2478 +/- 0.0037



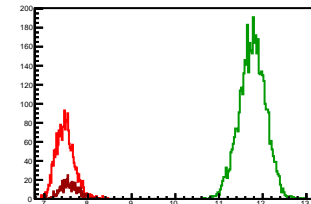
Cycle 3, PosHel

Entries: 1684	Entries: 4225	Entries: 2280
Mean: 7.7301 +/- 0.0066	Mean: 11.8151 +/- 0.0075	Mean: 7.6427 +/- 0.0063
Std Dev: 0.2712 +/- 0.0047	Std Dev: 0.4852 +/- 0.0053	Std Dev: 0.3000 +/- 0.0044



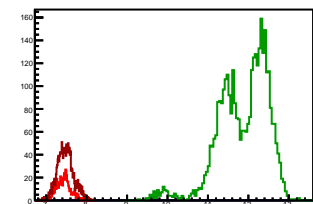
Cycle 4, PosHel

Entries: 2201	Entries: 4633	Entries: 594
Mean: 7.4739 +/- 0.0045	Mean: 11.7634 +/- 0.0044	Mean: 7.5735 +/- 0.0083
Std Dev: 0.2092 +/- 0.0032	Std Dev: 0.3016 +/- 0.0031	Std Dev: 0.2033 +/- 0.0059



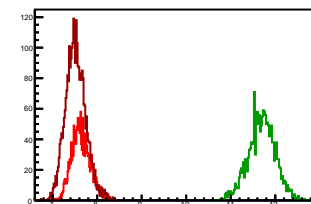
Cycle 5, PosHel

Entries: 588	Entries: 3578	Entries: 1592
Mean: 7.4376 +/- 0.0071	Mean: 11.8709 +/- 0.0102	Mean: 7.4780 +/- 0.0050
Std Dev: 0.1722 +/- 0.0050	Std Dev: 0.6115 +/- 0.0072	Std Dev: 0.1985 +/- 0.0035



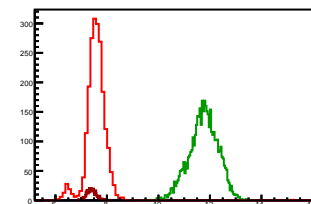
Cycle 6, PosHel

Entries: 1585	Entries: 1804	Entries: 2973
Mean: 7.6344 +/- 0.0052	Mean: 11.6988 +/- 0.0071	Mean: 7.5176 +/- 0.0042
Std Dev: 0.2087 +/- 0.0037	Std Dev: 0.3031 +/- 0.0050	Std Dev: 0.2278 +/- 0.0030



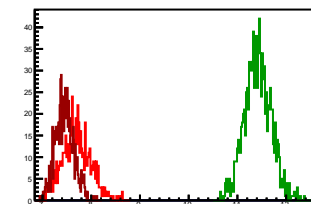
Cycle 7, PosHel

Entries: 2095	Entries: 4615	Entries: 583
Mean: 7.5681 +/- 0.0086	Mean: 11.7504 +/- 0.0083	Mean: 7.4054 +/- 0.0077
Std Dev: 0.3954 +/- 0.0061	Std Dev: 0.5638 +/- 0.0059	Std Dev: 0.1870 +/- 0.0055



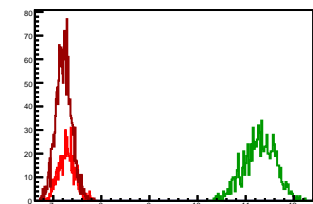
Cycle 8, PosHel

Entries: 581	Entries: 1088	Entries: 747
Mean: 7.7026 +/- 0.0119	Mean: 11.4167 +/- 0.0082	Mean: 7.4527 +/- 0.0069
Std Dev: 0.2873 +/- 0.0084	Std Dev: 0.2702 +/- 0.0058	Std Dev: 0.1892 +/- 0.0049



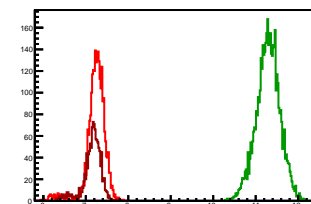
Cycle 9, PosHel

Entries: 796	Entries: 984	Entries: 1966
Mean: 7.2830 +/- 0.0060	Mean: 11.2873 +/- 0.0103	Mean: 7.2191 +/- 0.0037
Std Dev: 0.1700 +/- 0.0043	Std Dev: 0.3244 +/- 0.0073	Std Dev: 0.1656 +/- 0.0026



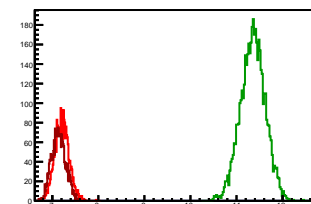
Cycle 10, PosHel

Entries: 2552	Entries: 4598	Entries: 1187
Mean: 7.2332 +/- 0.0047	Mean: 11.2915 +/- 0.0041	Mean: 7.1472 +/- 0.0065
Std Dev: 0.2386 +/- 0.0033	Std Dev: 0.2779 +/- 0.0029	Std Dev: 0.2256 +/- 0.0046



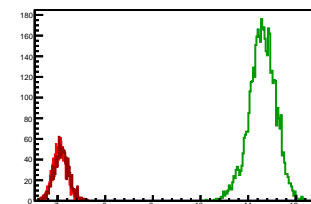
Cycle 11, PosHel

Entries: 2216	Entries: 4682	Entries: 2289
Mean: 7.2090 +/- 0.0033	Mean: 11.3547 +/- 0.0039	Mean: 7.1379 +/- 0.0032
Std Dev: 0.1539 +/- 0.0023	Std Dev: 0.2696 +/- 0.0028	Std Dev: 0.1512 +/- 0.0022



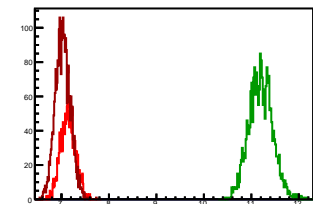
Cycle 12, PosHel

Entries: 1635	Entries: 4668	Entries: 1632
Mean: 7.0477 +/- 0.0037	Mean: 11.2977 +/- 0.0041	Mean: 7.0832 +/- 0.0039
Std Dev: 0.1509 +/- 0.0026	Std Dev: 0.2802 +/- 0.0029	Std Dev: 0.1562 +/- 0.0027



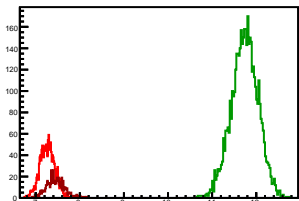
Cycle 13, PosHel

Entries: 1611	Entries: 2260	Entries: 2750
Mean: 7.1373 +/- 0.0039	Mean: 11.1978 +/- 0.0052	Mean: 7.0297 +/- 0.0030
Std Dev: 0.1578 +/- 0.0028	Std Dev: 0.2492 +/- 0.0037	Std Dev: 0.1597 +/- 0.0022



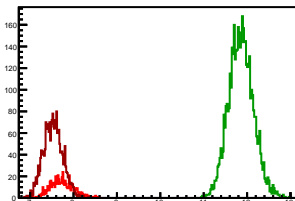
Cycle 1, NegHel

Entries: 1506	Entries: 4635	Entries: 588
Mean: 7.2677 +/- 0.0045	Mean: 11.7369 +/- 0.0045	Mean: 7.4479 +/- 0.0084
Std Dev: 0.1755 +/- 0.0032	Std Dev: 0.3053 +/- 0.0032	Std Dev: 0.2049 +/- 0.0060



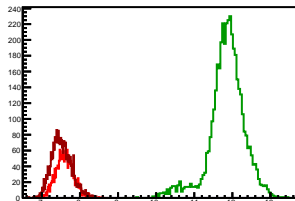
Cycle 2, NegHel

Entries: 586	Entries: 4585	Entries: 2251
Mean: 7.7357 +/- 0.0108	Mean: 11.8598 +/- 0.0042	Mean: 7.5294 +/- 0.0046
Std Dev: 0.2624 +/- 0.0077	Std Dev: 0.2847 +/- 0.0030	Std Dev: 0.2202 +/- 0.0033



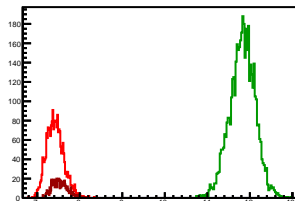
Cycle 3, NegHel

Entries: 1684	Entries: 4225	Entries: 2280
Mean: 7.6058 +/- 0.0058	Mean: 11.8494 +/- 0.0073	Mean: 7.5140 +/- 0.0054
Std Dev: 0.2364 +/- 0.0041	Std Dev: 0.4741 +/- 0.0052	Std Dev: 0.2594 +/- 0.0038



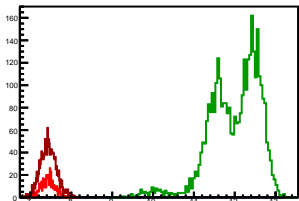
Cycle 4, NegHel

Entries: 2201	Entries: 4633	Entries: 594
Mean: 7.4227 +/- 0.0043	Mean: 11.8257 +/- 0.0044	Mean: 7.5321 +/- 0.0076
Std Dev: 0.2031 +/- 0.0031	Std Dev: 0.2982 +/- 0.0031	Std Dev: 0.1941 +/- 0.0053



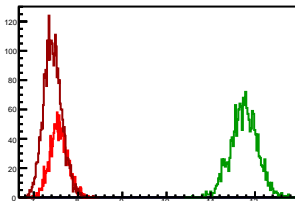
Cycle 5, NegHel

Entries: 588	Entries: 3578	Entries: 1592
Mean: 7.4249 +/- 0.0070	Mean: 11.9885 +/- 0.0102	Mean: 7.4387 +/- 0.0050
Std Dev: 0.1702 +/- 0.0050	Std Dev: 0.6124 +/- 0.0072	Std Dev: 0.1996 +/- 0.0035



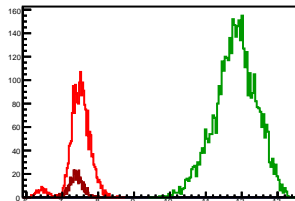
Cycle 6, NegHel

Entries: 1585	Entries: 1804	Entries: 2973
Mean: 7.5641 +/- 0.0051	Mean: 11.7506 +/- 0.0072	Mean: 7.4277 +/- 0.0038
Std Dev: 0.2011 +/- 0.0036	Std Dev: 0.3039 +/- 0.0051	Std Dev: 0.2067 +/- 0.0027



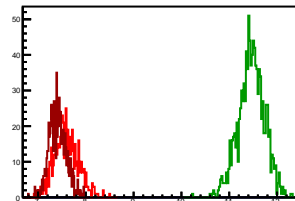
Cycle 7, NegHel

Entries: 2095	Entries: 4615	Entries: 583
Mean: 7.4776 +/- 0.0071	Mean: 11.8189 +/- 0.0086	Mean: 7.3869 +/- 0.0075
Std Dev: 0.3250 +/- 0.0050	Std Dev: 0.5844 +/- 0.0061	Std Dev: 0.1807 +/- 0.0053



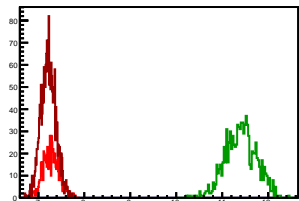
Cycle 8, NegHel

Entries: 581	Entries: 1088	Entries: 747
Mean: 7.5960 +/- 0.0104	Mean: 11.4651 +/- 0.0083	Mean: 7.4127 +/- 0.0065
Std Dev: 0.2510 +/- 0.0074	Std Dev: 0.2745 +/- 0.0059	Std Dev: 0.1784 +/- 0.0046



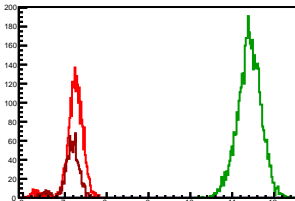
Cycle 9, NegHel

Entries: 796	Entries: 984	Entries: 1966
Mean: 7.2753 +/- 0.0059	Mean: 11.4023 +/- 0.0107	Mean: 7.2217 +/- 0.0037
Std Dev: 0.1673 +/- 0.0042	Std Dev: 0.3365 +/- 0.0076	Std Dev: 0.1649 +/- 0.0026



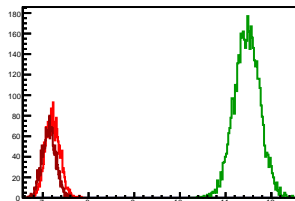
Cycle 10, NegHel

Entries: 2552	Entries: 4598	Entries: 1187
Mean: 7.2297 +/- 0.0047	Mean: 11.4081 +/- 0.0042	Mean: 7.1451 +/- 0.0066
Std Dev: 0.2394 +/- 0.0034	Std Dev: 0.2817 +/- 0.0029	Std Dev: 0.2288 +/- 0.0047



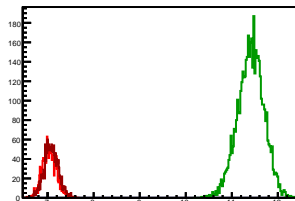
Cycle 11, NegHel

Entries: 2216	Entries: 4682	Entries: 2289
Mean: 7.2146 +/- 0.0034	Mean: 11.4666 +/- 0.0041	Mean: 7.1349 +/- 0.0031
Std Dev: 0.1597 +/- 0.0024	Std Dev: 0.2791 +/- 0.0029	Std Dev: 0.1497 +/- 0.0022



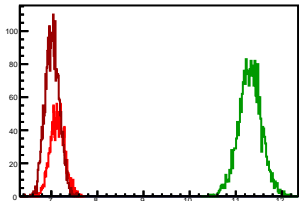
Cycle 12, NegHel

Entries: 1635	Entries: 4668	Entries: 1632
Mean: 7.0413 +/- 0.0037	Mean: 11.4103 +/- 0.0042	Mean: 7.0803 +/- 0.0038
Std Dev: 0.1505 +/- 0.0026	Std Dev: 0.2860 +/- 0.0030	Std Dev: 0.1550 +/- 0.0027



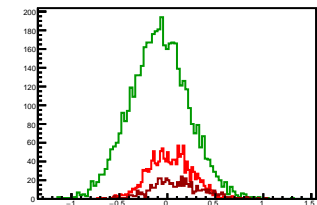
Cycle 13, NegHel

Entries: 1611	Entries: 2260	Entries: 2750
Mean: 7.1329 +/- 0.0039	Mean: 11.3098 +/- 0.0052	Mean: 7.0234 +/- 0.0030
Std Dev: 0.1555 +/- 0.0027	Std Dev: 0.2494 +/- 0.0037	Std Dev: 0.1549 +/- 0.0021



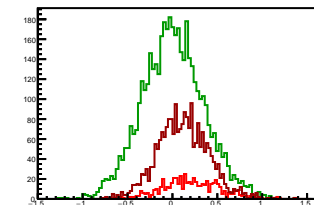
Cycle 1, Diffs

Entries: 1506	Entries: 4635	Entries: 588
Mean: 0.0301 +/- 0.0057	Mean: -0.0843 +/- 0.0045	Mean: 0.0980 +/- 0.0107
Std Dev: 0.2231 +/- 0.0041	Std Dev: 0.3062 +/- 0.0032	Std Dev: 0.2599 +/- 0.0076



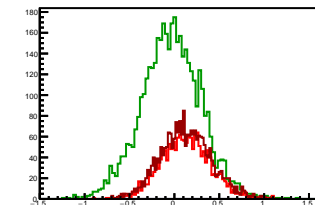
Cycle 2, Diffs

Entries: 586	Entries: 4585	Entries: 2251
Mean: 0.2087 +/- 0.0132	Mean: 0.0065 +/- 0.0051	Mean: 0.1162 +/- 0.0059
Std Dev: 0.3196 +/- 0.0093	Std Dev: 0.3451 +/- 0.0036	Std Dev: 0.2821 +/- 0.0042



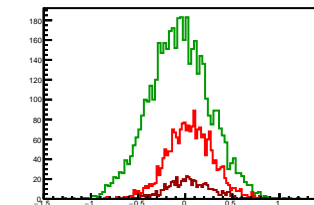
Cycle 3, Diffs

Entries: 1684	Entries: 4225	Entries: 2280
Mean: 0.1243 +/- 0.0067	Mean: -0.0342 +/- 0.0051	Mean: 0.1287 +/- 0.0060
Std Dev: 0.2739 +/- 0.0047	Std Dev: 0.3329 +/- 0.0036	Std Dev: 0.2851 +/- 0.0042



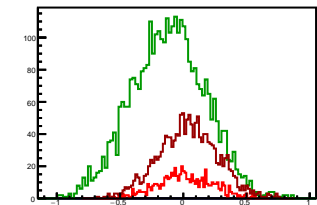
Cycle 4, Diffs

Entries: 2201	Entries: 4633	Entries: 594
Mean: 0.0512 +/- 0.0052	Mean: -0.0622 +/- 0.0047	Mean: 0.0413 +/- 0.0095
Std Dev: 0.2443 +/- 0.0037	Std Dev: 0.3200 +/- 0.0033	Std Dev: 0.2306 +/- 0.0067



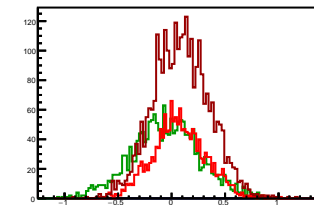
Cycle 5, Diffs

Entries: 588	Entries: 3578	Entries: 1592
Mean: 0.0127 +/- 0.0089	Mean: -0.1176 +/- 0.0049	Mean: 0.0393 +/- 0.0059
Std Dev: 0.2161 +/- 0.0063	Std Dev: 0.2903 +/- 0.0034	Std Dev: 0.2338 +/- 0.0041



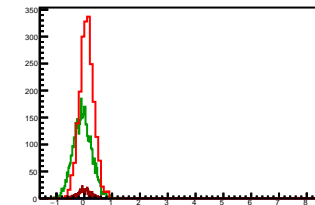
Cycle 6, Diffs

Entries: 1585	Entries: 1804	Entries: 2973
Mean: 0.0703 +/- 0.0063	Mean: -0.0518 +/- 0.0075	Mean: 0.0899 +/- 0.0048
Std Dev: 0.2500 +/- 0.0044	Std Dev: 0.3180 +/- 0.0053	Std Dev: 0.2630 +/- 0.0034



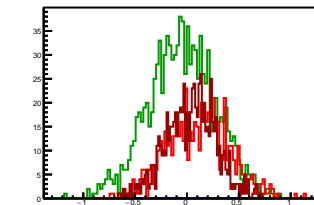
Cycle 7, Diffs

Entries: 2095	Entries: 4615	Entries: 583
Mean: 0.0905 +/- 0.0067	Mean: -0.0685 +/- 0.0048	Mean: 0.0186 +/- 0.0094
Std Dev: 0.3053 +/- 0.0047	Std Dev: 0.3268 +/- 0.0034	Std Dev: 0.2281 +/- 0.0067



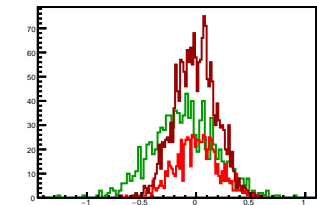
Cycle 8, Diffs

Entries: 581	Entries: 1088	Entries: 747
Mean: 0.1067 +/- 0.0125	Mean: -0.0484 +/- 0.0098	Mean: 0.0400 +/- 0.0088
Std Dev: 0.3020 +/- 0.0089	Std Dev: 0.3218 +/- 0.0069	Std Dev: 0.2399 +/- 0.0062



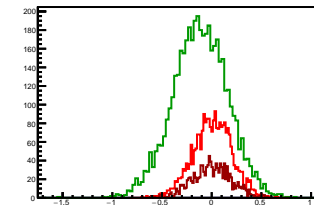
Cycle 9, Diffs

Entries: 796	Entries: 984	Entries: 1966
Mean: 0.0077 +/- 0.0070	Mean: -0.1150 +/- 0.0092	Mean: -0.0026 +/- 0.0043
Std Dev: 0.1975 +/- 0.0050	Std Dev: 0.2890 +/- 0.0065	Std Dev: 0.1887 +/- 0.0030



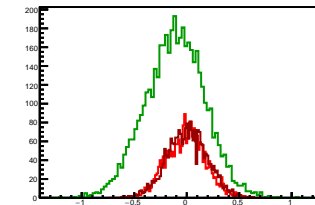
Cycle 10, Diffs

Entries: 2552	Entries: 4598	Entries: 1187
Mean: 0.0035 +/- 0.0039	Mean: -0.1165 +/- 0.0041	Mean: 0.0021 +/- 0.0056
Std Dev: 0.1951 +/- 0.0027	Std Dev: 0.2756 +/- 0.0029	Std Dev: 0.1934 +/- 0.0040



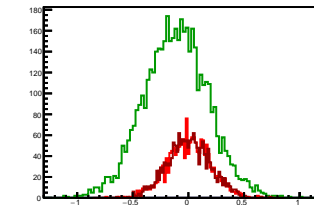
Cycle 11, Diffs

Entries: 2216	Entries: 4682	Entries: 2289
Mean: -0.0056 +/- 0.0040	Mean: -0.1119 +/- 0.0041	Mean: 0.0030 +/- 0.0040
Std Dev: 0.1880 +/- 0.0028	Std Dev: 0.2830 +/- 0.0029	Std Dev: 0.1902 +/- 0.0028



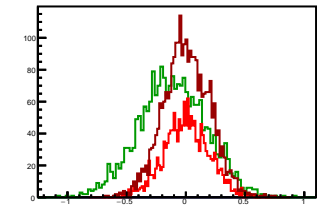
Cycle 12, Diffs

Entries: 1635	Entries: 4668	Entries: 1632
Mean: 0.0064 +/- 0.0048	Mean: -0.1127 +/- 0.0042	Mean: 0.0029 +/- 0.0047
Std Dev: 0.1941 +/- 0.0034	Std Dev: 0.2880 +/- 0.0030	Std Dev: 0.1914 +/- 0.0033



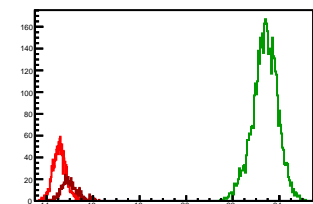
Cycle 13, Diffs

Entries: 1611	Entries: 2260	Entries: 2750
Mean: 0.0044 +/- 0.0047	Mean: -0.1119 +/- 0.0060	Mean: 0.0063 +/- 0.0037
Std Dev: 0.1893 +/- 0.0033	Std Dev: 0.2830 +/- 0.0042	Std Dev: 0.1955 +/- 0.0028



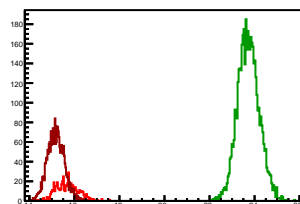
Cycle 1, Sums

Entries: 1506	Entries: 4635	Entries: 588
Mean: 14.5655 +/- 0.0074	Mean: 23.3896 +/- 0.0079	Mean: 14.9937 +/- 0.0149
Std Dev: 0.2871 +/- 0.0052	Std Dev: 0.5379 +/- 0.0056	Std Dev: 0.3604 +/- 0.0105



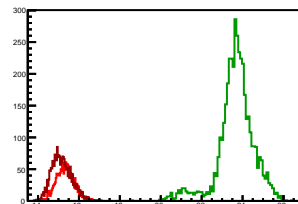
Cycle 2, Sums

Entries: 586	Entries: 4585	Entries: 2251
Mean: 15.6801 +/- 0.0203	Mean: 23.7261 +/- 0.0071	Mean: 15.1751 +/- 0.0079
Std Dev: 0.4919 +/- 0.0144	Std Dev: 0.4829 +/- 0.0050	Std Dev: 0.3744 +/- 0.0056



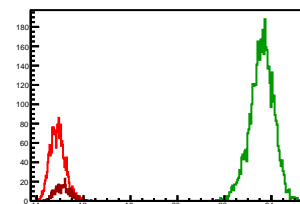
Cycle 3, Sums

Entries: 1684	Entries: 4225	Entries: 2280
Mean: 15.3359 +/- 0.0104	Mean: 23.6645 +/- 0.0138	Mean: 15.1566 +/- 0.0101
Std Dev: 0.4288 +/- 0.0074	Std Dev: 0.8998 +/- 0.0098	Std Dev: 0.4830 +/- 0.0072



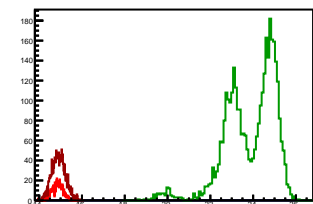
Cycle 4, Sums

Entries: 2201	Entries: 4633	Entries: 594
Mean: 14.8966 +/- 0.0071	Mean: 23.5891 +/- 0.0075	Mean: 15.1056 +/- 0.0128
Std Dev: 0.3322 +/- 0.0050	Std Dev: 0.5074 +/- 0.0053	Std Dev: 0.3119 +/- 0.0090



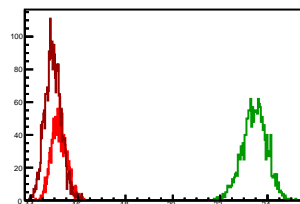
Cycle 5, Sums

Entries: 588	Entries: 3578	Entries: 1592
Mean: 14.8624 +/- 0.0110	Mean: 23.8594 +/- 0.0199	Mean: 14.9167 +/- 0.0081
Std Dev: 0.2657 +/- 0.0077	Std Dev: 1.1890 +/- 0.0141	Std Dev: 0.3222 +/- 0.0057



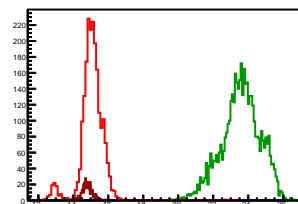
Cycle 6, Sums

Entries: 1585	Entries: 1804	Entries: 2973
Mean: 15.1986 +/- 0.0082	Mean: 23.4493 +/- 0.0122	Mean: 14.9452 +/- 0.0064
Std Dev: 0.3248 +/- 0.0058	Std Dev: 0.5170 +/- 0.0086	Std Dev: 0.3464 +/- 0.0045



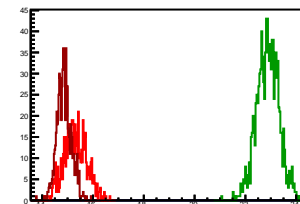
Cycle 7, Sums

Entries: 2095	Entries: 4615	Entries: 583
Mean: 15.0458 +/- 0.0143	Mean: 23.5694 +/- 0.0162	Mean: 14.7923 +/- 0.0119
Std Dev: 0.6562 +/- 0.0101	Std Dev: 1.1009 +/- 0.0115	Std Dev: 0.2885 +/- 0.0084



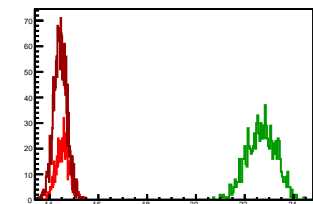
Cycle 8, Sums

Entries: 581	Entries: 1088	Entries: 747
Mean: 15.2986 +/- 0.0186	Mean: 22.8818 +/- 0.0133	Mean: 14.8653 +/- 0.0102
Std Dev: 0.4472 +/- 0.0131	Std Dev: 0.4396 +/- 0.0094	Std Dev: 0.2788 +/- 0.0072



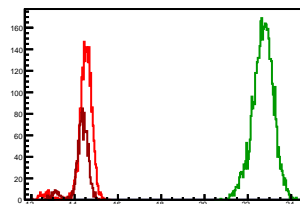
Cycle 9, Sums

Entries: 796	Entries: 984	Entries: 1966
Mean: 14.5582 +/- 0.0097	Mean: 22.6896 +/- 0.0190	Mean: 14.4408 +/- 0.0061
Std Dev: 0.2733 +/- 0.0069	Std Dev: 0.5945 +/- 0.0134	Std Dev: 0.2713 +/- 0.0043



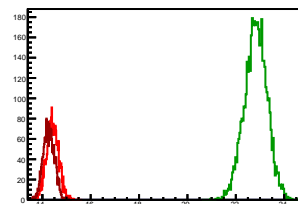
Cycle 10, Sums

Entries: 2552	Entries: 4598	Entries: 1187
Mean: 14.4629 +/- 0.0086	Mean: 22.6996 +/- 0.0072	Mean: 14.2923 +/- 0.0119
Std Dev: 0.4363 +/- 0.0061	Std Dev: 0.4870 +/- 0.0051	Std Dev: 0.4113 +/- 0.0084



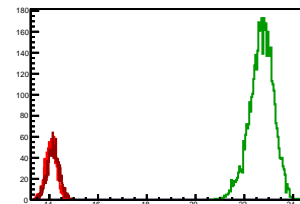
Cycle 11, Sums

Entries: 2216	Entries: 4682	Entries: 2289
Mean: 14.4236 +/- 0.0053	Mean: 22.8214 +/- 0.0069	Mean: 14.2728 +/- 0.0049
Std Dev: 0.2512 +/- 0.0038	Std Dev: 0.4702 +/- 0.0049	Std Dev: 0.2332 +/- 0.0034



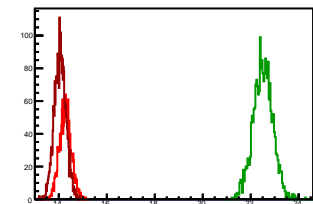
Cycle 12, Sums

Entries: 1635	Entries: 4668	Entries: 1632
Mean: 14.0889 +/- 0.0057	Mean: 22.7080 +/- 0.0071	Mean: 14.1636 +/- 0.0061
Std Dev: 0.2306 +/- 0.0040	Std Dev: 0.4875 +/- 0.0050	Std Dev: 0.2454 +/- 0.0043



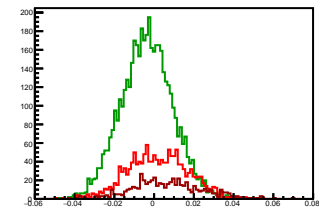
Cycle 13, Sums

Entries: 1611	Entries: 2260	Entries: 2750
Mean: 14.2701 +/- 0.0062	Mean: 22.5076 +/- 0.0086	Mean: 14.0531 +/- 0.0047
Std Dev: 0.2496 +/- 0.0044	Std Dev: 0.4105 +/- 0.0061	Std Dev: 0.2465 +/- 0.0033



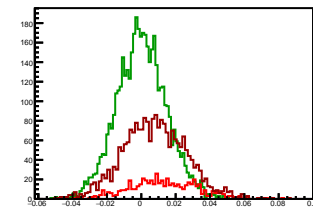
Cycle 1, Asyms

Entries: 1506	Entries: 4635	Entries: 588
Mean: 0.0020 +/- 0.0004	Mean: -0.0036 +/- 0.0002	Mean: 0.0065 +/- 0.0007
Std Dev: 0.0153 +/- 0.0003	Std Dev: 0.0131 +/- 0.0001	Std Dev: 0.0173 +/- 0.0005



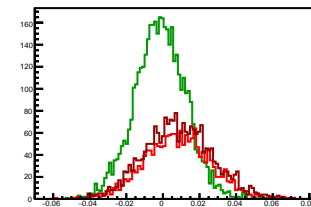
Cycle 2, Asyms

Entries: 586	Entries: 4585	Entries: 2251
Mean: 0.0132 +/- 0.0008	Mean: 0.0003 +/- 0.0002	Mean: 0.0076 +/- 0.0004
Std Dev: 0.0201 +/- 0.0006	Std Dev: 0.0145 +/- 0.0002	Std Dev: 0.0185 +/- 0.0003



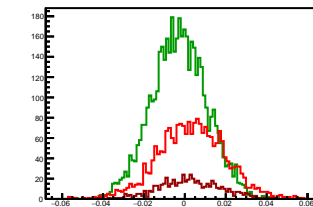
Cycle 3, Asyms

Entries: 1684	Entries: 4225	Entries: 2280
Mean: 0.0080 +/- 0.0004	Mean: -0.0015 +/- 0.0002	Mean: 0.0084 +/- 0.0004
Std Dev: 0.0178 +/- 0.0003	Std Dev: 0.0140 +/- 0.0002	Std Dev: 0.0187 +/- 0.0003



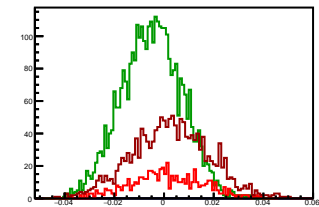
Cycle 4, Asyms

Entries: 2201	Entries: 4633	Entries: 594
Mean: 0.0034 +/- 0.0003	Mean: -0.0026 +/- 0.0002	Mean: 0.0027 +/- 0.0006
Std Dev: 0.0163 +/- 0.0002	Std Dev: 0.0136 +/- 0.0001	Std Dev: 0.0152 +/- 0.0004



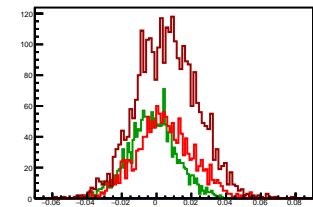
Cycle 5, Asyms

Entries: 588	Entries: 3578	Entries: 1592
Mean: 0.0009 +/- 0.0006	Mean: -0.0049 +/- 0.0002	Mean: 0.0026 +/- 0.0004
Std Dev: 0.0145 +/- 0.0004	Std Dev: 0.0122 +/- 0.0001	Std Dev: 0.0156 +/- 0.0003



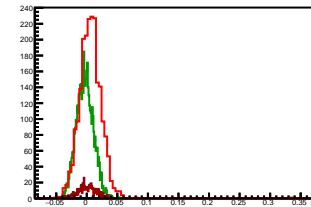
Cycle 6, Asyms

Entries: 1585	Entries: 1804	Entries: 2973
Mean: 0.0046 +/- 0.0004	Mean: -0.0022 +/- 0.0003	Mean: 0.0060 +/- 0.0003
Std Dev: 0.0164 +/- 0.0003	Std Dev: 0.0136 +/- 0.0002	Std Dev: 0.0175 +/- 0.0002



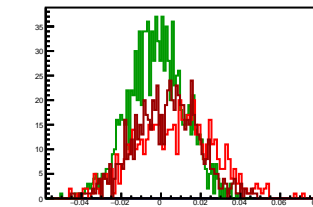
Cycle 7, Asyms

Entries: 2095	Entries: 4615	Entries: 583
Mean: 0.0058 +/- 0.0004	Mean: -0.0029 +/- 0.0002	Mean: 0.0012 +/- 0.0006
Std Dev: 0.0185 +/- 0.0003	Std Dev: 0.0138 +/- 0.0001	Std Dev: 0.0154 +/- 0.0005



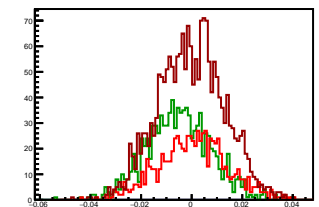
Cycle 8, Asyms

Entries: 581	Entries: 1088	Entries: 747
Mean: 0.0069 +/- 0.0008	Mean: -0.0021 +/- 0.0004	Mean: 0.0027 +/- 0.0006
Std Dev: 0.0196 +/- 0.0006	Std Dev: 0.0141 +/- 0.0003	Std Dev: 0.0161 +/- 0.0004



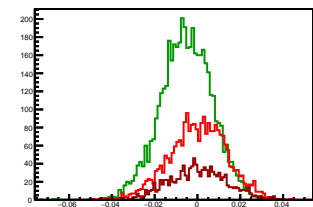
Cycle 9, Asyms

Entries: 796	Entries: 984	Entries: 1966
Mean: 0.0005 +/- 0.0005	Mean: -0.0051 +/- 0.0004	Mean: -0.0002 +/- 0.0003
Std Dev: 0.0135 +/- 0.0003	Std Dev: 0.0128 +/- 0.0003	Std Dev: 0.0131 +/- 0.0002



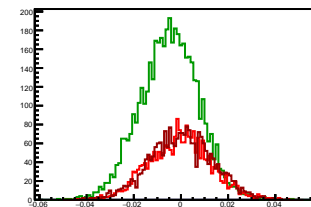
Cycle 10, Asyms

Entries: 2552	Entries: 4598	Entries: 1187
Mean: 0.0002 +/- 0.0003	Mean: -0.0051 +/- 0.0002	Mean: 0.0002 +/- 0.0004
Std Dev: 0.0134 +/- 0.0002	Std Dev: 0.0121 +/- 0.0001	Std Dev: 0.0135 +/- 0.0003



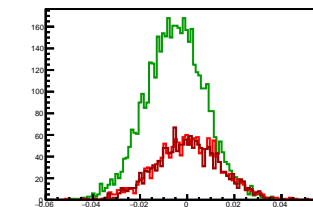
Cycle 11, Asyms

Entries: 2216	Entries: 4682	Entries: 2289
Mean: -0.0004 +/- 0.0003	Mean: -0.0049 +/- 0.0002	Mean: 0.0002 +/- 0.0003
Std Dev: 0.0130 +/- 0.0002	Std Dev: 0.0124 +/- 0.0001	Std Dev: 0.0133 +/- 0.0002



Cycle 12, Asyms

Entries: 1635	Entries: 4668	Entries: 1632
Mean: 0.0005 +/- 0.0003	Mean: -0.0050 +/- 0.0002	Mean: 0.0002 +/- 0.0003
Std Dev: 0.0138 +/- 0.0002	Std Dev: 0.0127 +/- 0.0001	Std Dev: 0.0135 +/- 0.0002



Cycle 13, Asyms

Entries: 1611	Entries: 2260	Entries: 2750
Mean: 0.0003 +/- 0.0003	Mean: -0.0050 +/- 0.0003	Mean: 0.0004 +/- 0.0003
Std Dev: 0.0133 +/- 0.0002	Std Dev: 0.0126 +/- 0.0002	Std Dev: 0.0139 +/- 0.0002

