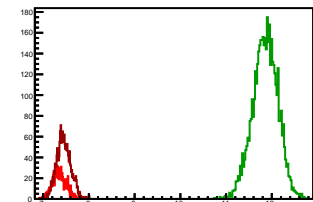


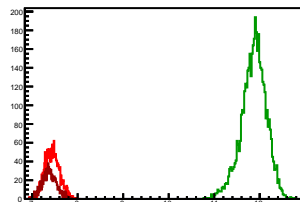
### Cycle 1, PosHel

Entries: 852	Entries: 4635	Entries: 1803
Mean: 7.3586 +/- 0.0052	Mean: 11.8543 +/- 0.0041	Mean: 7.4512 +/- 0.0037
Std Dev: 0.1515 +/- 0.0037	Std Dev: 0.2760 +/- 0.0029	Std Dev: 0.1567 +/- 0.0026



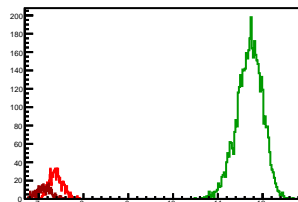
### Cycle 2, PosHel

Entries: 1755	Entries: 4580	Entries: 940
Mean: 7.4399 +/- 0.0039	Mean: 11.8673 +/- 0.0041	Mean: 7.3846 +/- 0.0053
Std Dev: 0.1618 +/- 0.0027	Std Dev: 0.2756 +/- 0.0029	Std Dev: 0.1621 +/- 0.0037



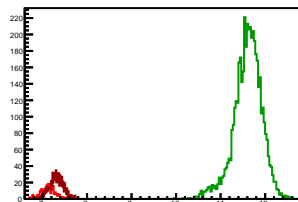
### Cycle 3, PosHel

Entries: 928	Entries: 4662	Entries: 491
Mean: 7.3888 +/- 0.0050	Mean: 11.7065 +/- 0.0042	Mean: 7.1169 +/- 0.0069
Std Dev: 0.1510 +/- 0.0035	Std Dev: 0.2898 +/- 0.0030	Std Dev: 0.1518 +/- 0.0048



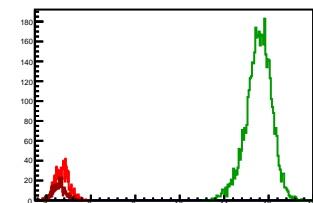
### Cycle 4, PosHel

Entries: 449	Entries: 4606	Entries: 960
Mean: 7.1312 +/- 0.0074	Mean: 11.6062 +/- 0.0046	Mean: 7.3151 +/- 0.0050
Std Dev: 0.1571 +/- 0.0052	Std Dev: 0.3154 +/- 0.0033	Std Dev: 0.1543 +/- 0.0035



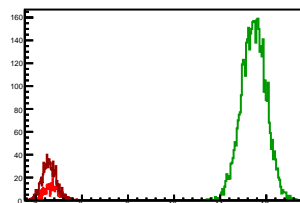
### Cycle 5, PosHel

Entries: 1072	Entries: 4619	Entries: 514
Mean: 7.3562 +/- 0.0047	Mean: 11.7776 +/- 0.0042	Mean: 7.2883 +/- 0.0068
Std Dev: 0.1543 +/- 0.0033	Std Dev: 0.2881 +/- 0.0030	Std Dev: 0.1535 +/- 0.0048



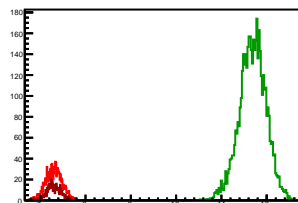
### Cycle 6, PosHel

Entries: 476	Entries: 4682	Entries: 1018
Mean: 7.3415 +/- 0.0069	Mean: 11.7292 +/- 0.0039	Mean: 7.2902 +/- 0.0048
Std Dev: 0.1509 +/- 0.0049	Std Dev: 0.2684 +/- 0.0028	Std Dev: 0.1524 +/- 0.0034



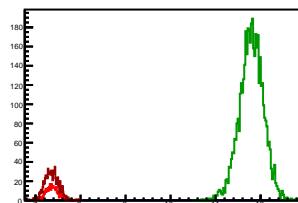
### Cycle 7, PosHel

Entries: 1091	Entries: 4600	Entries: 501
Mean: 7.3035 +/- 0.0053	Mean: 11.6901 +/- 0.0043	Mean: 7.2991 +/- 0.0067
Std Dev: 0.1748 +/- 0.0037	Std Dev: 0.2933 +/- 0.0031	Std Dev: 0.1492 +/- 0.0047



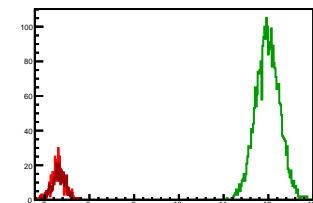
### Cycle 8, PosHel

Entries: 435	Entries: 4609	Entries: 897
Mean: 7.3755 +/- 0.0069	Mean: 11.7941 +/- 0.0039	Mean: 7.3574 +/- 0.0051
Std Dev: 0.1434 +/- 0.0049	Std Dev: 0.2669 +/- 0.0028	Std Dev: 0.1521 +/- 0.0036



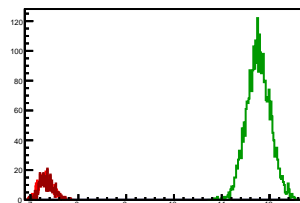
### Cycle 9, PosHel

Entries: 630	Entries: 2988	Entries: 506
Mean: 7.2970 +/- 0.0060	Mean: 11.9831 +/- 0.0049	Mean: 7.3112 +/- 0.0065
Std Dev: 0.1503 +/- 0.0042	Std Dev: 0.2675 +/- 0.0035	Std Dev: 0.1471 +/- 0.0046



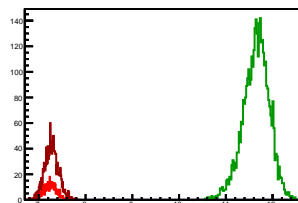
### Cycle 10, PosHel

Entries: 618	Entries: 3074	Entries: 482
Mean: 7.3108 +/- 0.0060	Mean: 11.7670 +/- 0.0045	Mean: 7.3397 +/- 0.0067
Std Dev: 0.1502 +/- 0.0043	Std Dev: 0.2479 +/- 0.0032	Std Dev: 0.1480 +/- 0.0048



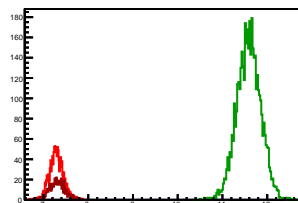
### Cycle 11, PosHel

Entries: 438	Entries: 3816	Entries: 1305
Mean: 7.2475 +/- 0.0069	Mean: 11.6471 +/- 0.0045	Mean: 7.2742 +/- 0.0042
Std Dev: 0.1444 +/- 0.0049	Std Dev: 0.2805 +/- 0.0032	Std Dev: 0.1500 +/- 0.0029



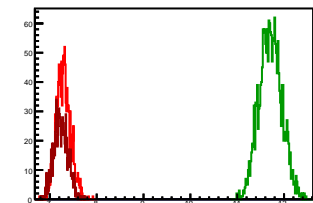
### Cycle 12, PosHel

Entries: 1242	Entries: 4290	Entries: 580
Mean: 7.2908 +/- 0.0043	Mean: 11.5889 +/- 0.0041	Mean: 7.3059 +/- 0.0071
Std Dev: 0.1530 +/- 0.0031	Std Dev: 0.2661 +/- 0.0029	Std Dev: 0.1699 +/- 0.0050



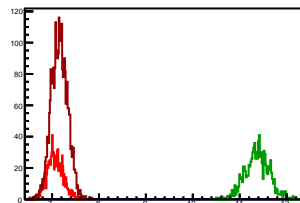
### Cycle 13, PosHel

Entries: 1228	Entries: 1994	Entries: 911
Mean: 7.2896 +/- 0.0043	Mean: 11.7080 +/- 0.0054	Mean: 7.2370 +/- 0.0050
Std Dev: 0.1511 +/- 0.0030	Std Dev: 0.2397 +/- 0.0038	Std Dev: 0.1517 +/- 0.0036



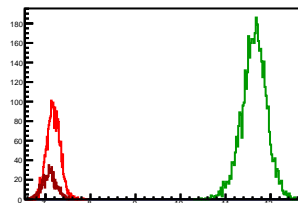
### Cycle 14, PosHel

Entries: 905	Entries: 954	Entries: 3088
Mean: 7.0643 +/- 0.0056	Mean: 11.3743 +/- 0.0083	Mean: 7.1584 +/- 0.0031
Std Dev: 0.1689 +/- 0.0040	Std Dev: 0.2571 +/- 0.0059	Std Dev: 0.1727 +/- 0.0022



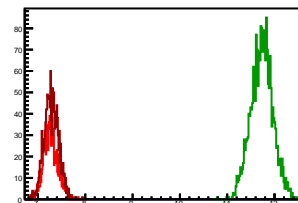
### Cycle 15, PosHel

Entries: 2588	Entries: 4611	Entries: 807
Mean: 7.1765 +/- 0.0029	Mean: 11.6317 +/- 0.0041	Mean: 7.0872 +/- 0.0055
Std Dev: 0.1485 +/- 0.0021	Std Dev: 0.2795 +/- 0.0029	Std Dev: 0.1566 +/- 0.0039



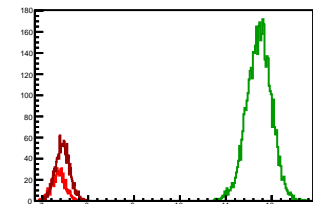
### Cycle 16, PosHel

Entries: 1002	Entries: 2167	Entries: 1385
Mean: 7.2708 +/- 0.0047	Mean: 11.7309 +/- 0.0050	Mean: 7.2809 +/- 0.0040
Std Dev: 0.1474 +/- 0.0033	Std Dev: 0.2320 +/- 0.0035	Std Dev: 0.1504 +/- 0.0029



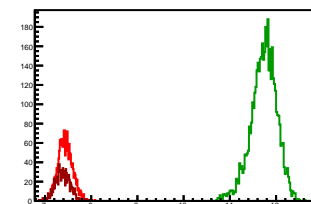
### Cycle 1, NegHel

Entries: 852	Entries: 4635	Entries: 1803
Mean: 7.3581 +/- 0.0053	Mean: 11.7222 +/- 0.0040	Mean: 7.4440 +/- 0.0037
Std Dev: 0.1551 +/- 0.0038	Std Dev: 0.2708 +/- 0.0028	Std Dev: 0.1553 +/- 0.0026



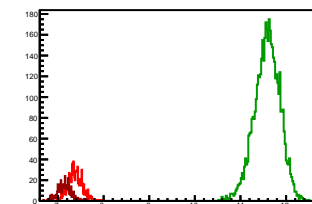
### Cycle 2, NegHel

Entries: 1755	Entries: 4580	Entries: 940
Mean: 7.4386 +/- 0.0038	Mean: 11.7350 +/- 0.0041	Mean: 7.3850 +/- 0.0053
Std Dev: 0.1578 +/- 0.0027	Std Dev: 0.2796 +/- 0.0029	Std Dev: 0.1619 +/- 0.0037



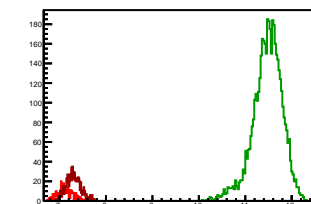
### Cycle 3, NegHel

Entries: 928	Entries: 4662	Entries: 491
Mean: 7.3801 +/- 0.0050	Mean: 11.5830 +/- 0.0041	Mean: 7.1316 +/- 0.0065
Std Dev: 0.1536 +/- 0.0036	Std Dev: 0.2801 +/- 0.0029	Std Dev: 0.1443 +/- 0.0046



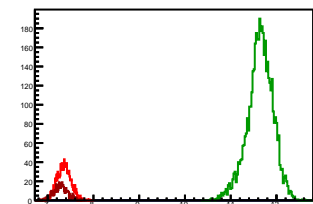
### Cycle 4, NegHel

Entries: 449	Entries: 4606	Entries: 960
Mean: 7.1284 +/- 0.0075	Mean: 11.4756 +/- 0.0047	Mean: 7.2958 +/- 0.0050
Std Dev: 0.1597 +/- 0.0053	Std Dev: 0.3177 +/- 0.0033	Std Dev: 0.1543 +/- 0.0035



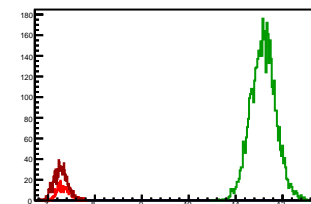
### Cycle 5, NegHel

Entries: 1072	Entries: 4619	Entries: 514
Mean: 7.3565 +/- 0.0046	Mean: 11.6426 +/- 0.0042	Mean: 7.2861 +/- 0.0067
Std Dev: 0.1521 +/- 0.0033	Std Dev: 0.2826 +/- 0.0029	Std Dev: 0.1512 +/- 0.0047



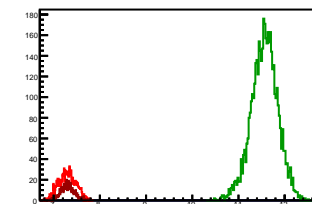
### Cycle 6, NegHel

Entries: 476	Entries: 4682	Entries: 1018
Mean: 7.3395 +/- 0.0064	Mean: 11.5879 +/- 0.0039	Mean: 7.2746 +/- 0.0045
Std Dev: 0.1388 +/- 0.0045	Std Dev: 0.2654 +/- 0.0027	Std Dev: 0.1447 +/- 0.0032



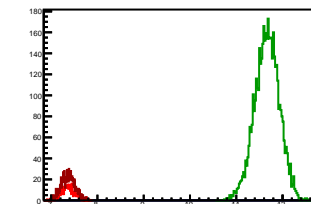
### Cycle 7, NegHel

Entries: 1091	Entries: 4600	Entries: 501
Mean: 7.2981 +/- 0.0055	Mean: 11.5610 +/- 0.0042	Mean: 7.3033 +/- 0.0066
Std Dev: 0.1618 +/- 0.0039	Std Dev: 0.2868 +/- 0.0030	Std Dev: 0.1482 +/- 0.0047



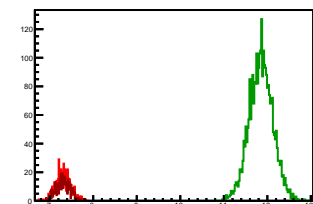
### Cycle 8, NegHel

Entries: 435	Entries: 4609	Entries: 897
Mean: 7.3645 +/- 0.0070	Mean: 11.6623 +/- 0.0039	Mean: 7.3651 +/- 0.0050
Std Dev: 0.1470 +/- 0.0050	Std Dev: 0.2657 +/- 0.0028	Std Dev: 0.1501 +/- 0.0035



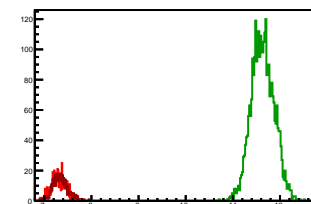
### Cycle 9, NegHel

Entries: 630	Entries: 2988	Entries: 506
Mean: 7.3027 +/- 0.0065	Mean: 11.8531 +/- 0.0049	Mean: 7.3152 +/- 0.0068
Std Dev: 0.1639 +/- 0.0046	Std Dev: 0.2704 +/- 0.0035	Std Dev: 0.1530 +/- 0.0048



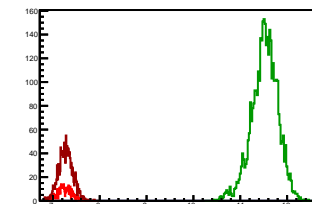
### Cycle 10, NegHel

Entries: 618	Entries: 3074	Entries: 482
Mean: 7.3032 +/- 0.0061	Mean: 11.6323 +/- 0.0044	Mean: 7.3333 +/- 0.0069
Std Dev: 0.1520 +/- 0.0043	Std Dev: 0.2415 +/- 0.0031	Std Dev: 0.1505 +/- 0.0048



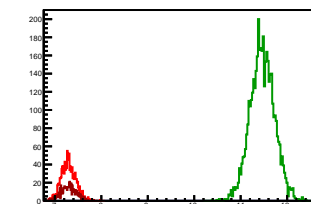
### Cycle 11, NegHel

Entries: 438	Entries: 3816	Entries: 1305
Mean: 7.2603 +/- 0.0072	Mean: 11.5213 +/- 0.0046	Mean: 7.2757 +/- 0.0043
Std Dev: 0.1501 +/- 0.0051	Std Dev: 0.2824 +/- 0.0032	Std Dev: 0.1542 +/- 0.0030



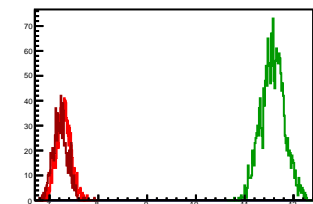
### Cycle 12, NegHel

Entries: 1242	Entries: 4290	Entries: 580
Mean: 7.2902 +/- 0.0044	Mean: 11.4647 +/- 0.0040	Mean: 7.2945 +/- 0.0066
Std Dev: 0.1556 +/- 0.0031	Std Dev: 0.2632 +/- 0.0028	Std Dev: 0.1588 +/- 0.0047



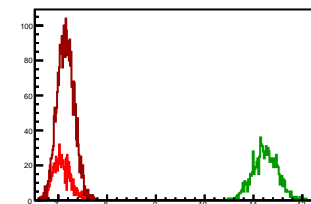
### Cycle 13, NegHel

Entries: 1228	Entries: 1994	Entries: 911
Mean: 7.2897 +/- 0.0042	Mean: 11.5758 +/- 0.0054	Mean: 7.2201 +/- 0.0049
Std Dev: 0.1489 +/- 0.0030	Std Dev: 0.2395 +/- 0.0038	Std Dev: 0.1478 +/- 0.0035



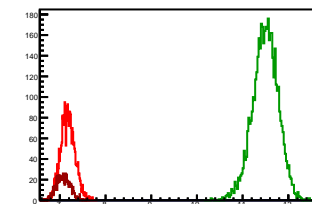
### Cycle 14, NegHel

Entries: 905	Entries: 954	Entries: 3088
Mean: 7.0687 +/- 0.0059	Mean: 11.2409 +/- 0.0082	Mean: 7.1540 +/- 0.0031
Std Dev: 0.1765 +/- 0.0041	Std Dev: 0.2548 +/- 0.0058	Std Dev: 0.1727 +/- 0.0022



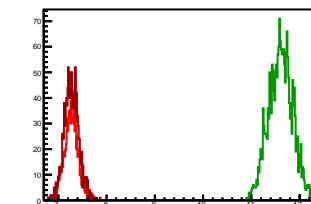
### Cycle 15, NegHel

Entries: 2588	Entries: 4611	Entries: 807
Mean: 7.1756 +/- 0.0031	Mean: 11.4961 +/- 0.0041	Mean: 7.0752 +/- 0.0054
Std Dev: 0.1568 +/- 0.0022	Std Dev: 0.2803 +/- 0.0029	Std Dev: 0.1535 +/- 0.0038



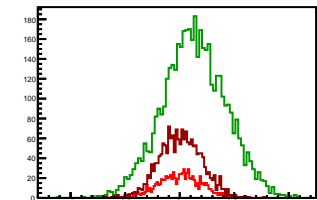
### Cycle 16, NegHel

Entries: 1002	Entries: 2167	Entries: 1385
Mean: 7.2739 +/- 0.0046	Mean: 11.6050 +/- 0.0053	Mean: 7.2745 +/- 0.0040
Std Dev: 0.1447 +/- 0.0032	Std Dev: 0.2466 +/- 0.0037	Std Dev: 0.1492 +/- 0.0028



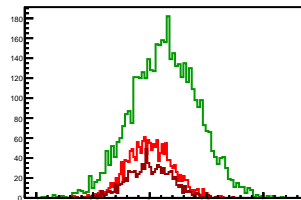
### Cycle 1, Diffs

Entries: 852	Entries: 4635	Entries: 1803
Mean: 0.0005 +/- 0.0066	Mean: 0.1321 +/- 0.0043	Mean: 0.0072 +/- 0.0046
Std Dev: 0.1925 +/- 0.0047	Std Dev: 0.2899 +/- 0.0030	Std Dev: 0.1944 +/- 0.0032



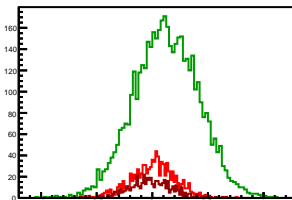
### Cycle 2, Diffs

Entries: 1755	Entries: 4580	Entries: 940
Mean: 0.0013 +/- 0.0047	Mean: 0.1323 +/- 0.0043	Mean: -0.0005 +/- 0.0063
Std Dev: 0.1968 +/- 0.0033	Std Dev: 0.2913 +/- 0.0030	Std Dev: 0.1946 +/- 0.0045



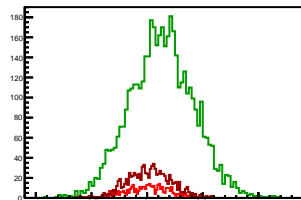
### Cycle 3, Diffs

Entries: 928	Entries: 4662	Entries: 491
Mean: 0.0087 +/- 0.0064	Mean: 0.1235 +/- 0.0042	Mean: -0.0147 +/- 0.0089
Std Dev: 0.1954 +/- 0.0045	Std Dev: 0.2878 +/- 0.0030	Std Dev: 0.1963 +/- 0.0063



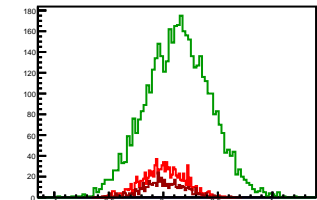
### Cycle 4, Diffs

Entries: 449	Entries: 4606	Entries: 960
Mean: 0.0028 +/- 0.0094	Mean: 0.1306 +/- 0.0042	Mean: 0.0193 +/- 0.0064
Std Dev: 0.1989 +/- 0.0066	Std Dev: 0.2867 +/- 0.0030	Std Dev: 0.1970 +/- 0.0045



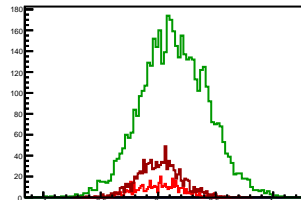
### Cycle 5, Diffs

Entries: 1072	Entries: 4619	Entries: 514
Mean: -0.0003 +/- 0.0059	Mean: 0.1350 +/- 0.0043	Mean: 0.0023 +/- 0.0085
Std Dev: 0.1938 +/- 0.0042	Std Dev: 0.2943 +/- 0.0031	Std Dev: 0.1931 +/- 0.0060



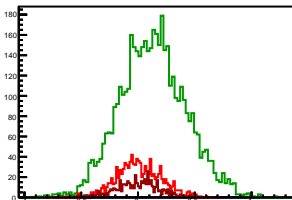
### Cycle 6, Diffs

Entries: 476	Entries: 4682	Entries: 1018
Mean: 0.0020 +/- 0.0090	Mean: 0.1413 +/- 0.0042	Mean: 0.0156 +/- 0.0059
Std Dev: 0.1965 +/- 0.0064	Std Dev: 0.2880 +/- 0.0030	Std Dev: 0.1889 +/- 0.0042



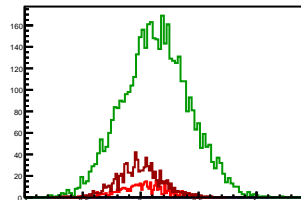
### Cycle 7, Diffs

Entries: 1091	Entries: 4600	Entries: 501
Mean: 0.0054 +/- 0.0059	Mean: 0.1292 +/- 0.0043	Mean: -0.0042 +/- 0.0083
Std Dev: 0.1946 +/- 0.0042	Std Dev: 0.2887 +/- 0.0030	Std Dev: 0.1857 +/- 0.0059



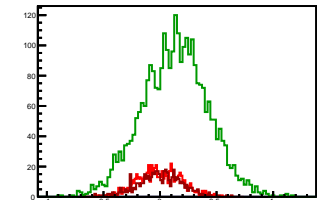
### Cycle 8, Diffs

Entries: 435	Entries: 4609	Entries: 897
Mean: 0.0110 +/- 0.0094	Mean: 0.1318 +/- 0.0042	Mean: -0.0077 +/- 0.0064
Std Dev: 0.1963 +/- 0.0067	Std Dev: 0.2884 +/- 0.0030	Std Dev: 0.1912 +/- 0.0045



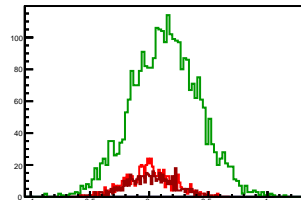
### Cycle 9, Diffs

Entries: 630	Entries: 2988	Entries: 506
Mean: -0.0057 +/- 0.0076	Mean: 0.1300 +/- 0.0053	Mean: -0.0040 +/- 0.0086
Std Dev: 0.1898 +/- 0.0053	Std Dev: 0.2909 +/- 0.0038	Std Dev: 0.1946 +/- 0.0061



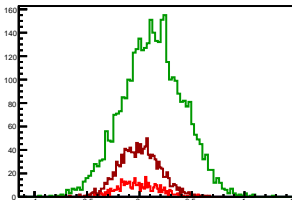
### Cycle 10, Diffs

Entries: 618	Entries: 3074	Entries: 482
Mean: 0.0076 +/- 0.0080	Mean: 0.1347 +/- 0.0051	Mean: 0.0065 +/- 0.0091
Std Dev: 0.1981 +/- 0.0056	Std Dev: 0.2840 +/- 0.0036	Std Dev: 0.1994 +/- 0.0064



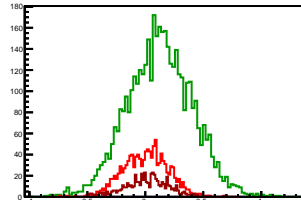
### Cycle 11, Diffs

Entries: 438	Entries: 3816	Entries: 1305
Mean: -0.0128 +/- 0.0092	Mean: 0.1258 +/- 0.0047	Mean: -0.0015 +/- 0.0053
Std Dev: 0.1931 +/- 0.0065	Std Dev: 0.2916 +/- 0.0033	Std Dev: 0.1926 +/- 0.0038



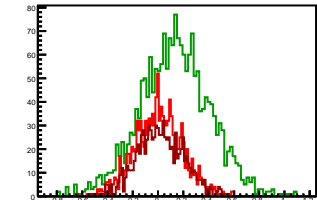
### Cycle 12, Diffs

Entries: 1242	Entries: 4290	Entries: 580
Mean: 0.0006 +/- 0.0055	Mean: 0.1242 +/- 0.0043	Mean: 0.0114 +/- 0.0079
Std Dev: 0.1929 +/- 0.0039	Std Dev: 0.2811 +/- 0.0030	Std Dev: 0.1904 +/- 0.0056



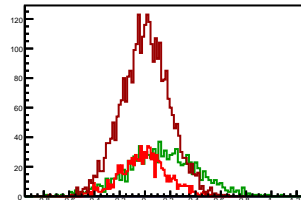
### Cycle 13, Diffs

Entries: 1228	Entries: 1994	Entries: 911
Mean: -0.0001 +/- 0.0054	Mean: 0.1322 +/- 0.0063	Mean: 0.0169 +/- 0.0062
Std Dev: 0.1892 +/- 0.0038	Std Dev: 0.2793 +/- 0.0044	Std Dev: 0.1866 +/- 0.0044



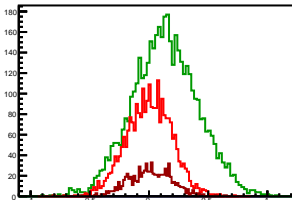
### Cycle 14, Diffs

Entries: 905	Entries: 954	Entries: 3088
Mean: -0.0043 +/- 0.0062	Mean: 0.1334 +/- 0.0092	Mean: 0.0045 +/- 0.0034
Std Dev: 0.1875 +/- 0.0044	Std Dev: 0.2845 +/- 0.0065	Std Dev: 0.1899 +/- 0.0024



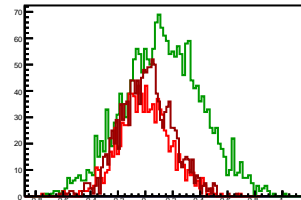
### Cycle 15, Diffs

Entries: 2588	Entries: 4611	Entries: 807
Mean: 0.0009 +/- 0.0038	Mean: 0.1356 +/- 0.0041	Mean: 0.0119 +/- 0.0063
Std Dev: 0.1921 +/- 0.0027	Std Dev: 0.2782 +/- 0.0029	Std Dev: 0.1797 +/- 0.0045



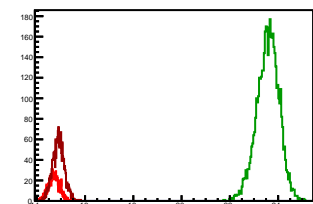
### Cycle 16, Diffs

Entries: 1002	Entries: 2167	Entries: 1385
Mean: -0.0032 +/- 0.0059	Mean: 0.1260 +/- 0.0061	Mean: 0.0064 +/- 0.0051
Std Dev: 0.1879 +/- 0.0042	Std Dev: 0.2845 +/- 0.0043	Std Dev: 0.1885 +/- 0.0036



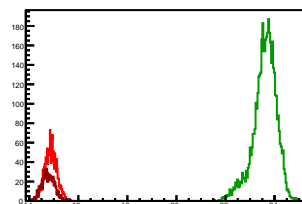
### Cycle 1, Sums

Entries: 852	Entries: 4635	Entries: 1803
Mean: 14.7167 +/- 0.0082	Mean: 23.5765 +/- 0.0068	Mean: 14.8952 +/- 0.0057
Std Dev: 0.2386 +/- 0.0058	Std Dev: 0.4637 +/- 0.0048	Std Dev: 0.2441 +/- 0.0041



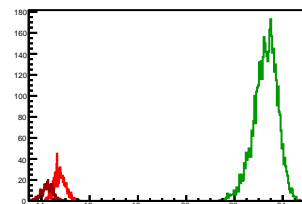
### Cycle 2, Sums

Entries: 1755	Entries: 4580	Entries: 940
Mean: 14.8785 +/- 0.0060	Mean: 23.6022 +/- 0.0070	Mean: 14.7696 +/- 0.0085
Std Dev: 0.2519 +/- 0.0043	Std Dev: 0.4726 +/- 0.0049	Std Dev: 0.2591 +/- 0.0060



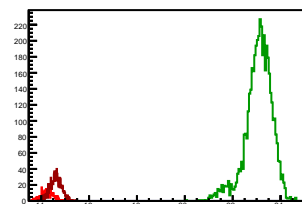
### Cycle 3, Sums

Entries: 928	Entries: 4662	Entries: 491
Mean: 14.7689 +/- 0.0077	Mean: 23.2894 +/- 0.0072	Mean: 14.2485 +/- 0.0100
Std Dev: 0.2337 +/- 0.0054	Std Dev: 0.4920 +/- 0.0051	Std Dev: 0.2219 +/- 0.0071



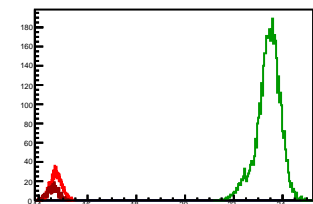
### Cycle 4, Sums

Entries: 449	Entries: 4606	Entries: 960
Mean: 14.2595 +/- 0.0116	Mean: 23.0818 +/- 0.0083	Mean: 14.6109 +/- 0.0077
Std Dev: 0.2465 +/- 0.0082	Std Dev: 0.5644 +/- 0.0059	Std Dev: 0.2375 +/- 0.0054



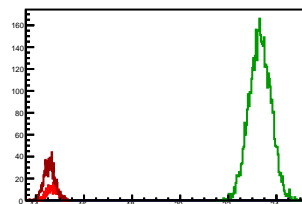
### Cycle 5, Sums

Entries: 1072	Entries: 4619	Entries: 514
Mean: 14.7126 +/- 0.0072	Mean: 23.4202 +/- 0.0072	Mean: 14.5744 +/- 0.0104
Std Dev: 0.2373 +/- 0.0051	Std Dev: 0.4890 +/- 0.0051	Std Dev: 0.2357 +/- 0.0074



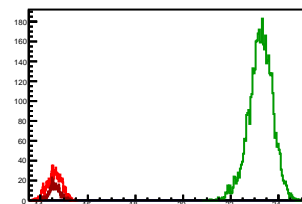
### Cycle 6, Sums

Entries: 476	Entries: 4682	Entries: 1018
Mean: 14.6809 +/- 0.0098	Mean: 23.3171 +/- 0.0065	Mean: 14.5648 +/- 0.0072
Std Dev: 0.2132 +/- 0.0069	Std Dev: 0.4495 +/- 0.0046	Std Dev: 0.2294 +/- 0.0051



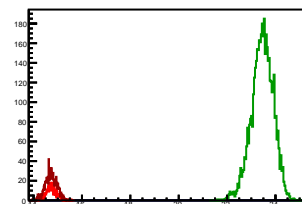
### Cycle 7, Sums

Entries: 1091	Entries: 4600	Entries: 501
Mean: 14.6015 +/- 0.0091	Mean: 23.2511 +/- 0.0074	Mean: 14.6025 +/- 0.0104
Std Dev: 0.2989 +/- 0.0064	Std Dev: 0.5031 +/- 0.0052	Std Dev: 0.2323 +/- 0.0073



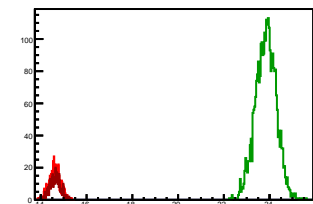
### Cycle 8, Sums

Entries: 435	Entries: 4609	Entries: 897
Mean: 14.7400 +/- 0.0103	Mean: 23.4564 +/- 0.0065	Mean: 14.7226 +/- 0.0078
Std Dev: 0.2140 +/- 0.0073	Std Dev: 0.4477 +/- 0.0047	Std Dev: 0.2340 +/- 0.0055



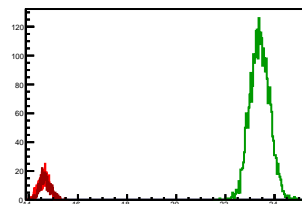
### Cycle 9, Sums

Entries: 630	Entries: 2988	Entries: 506
Mean: 14.5997 +/- 0.0100	Mean: 23.8363 +/- 0.0083	Mean: 14.6264 +/- 0.0102
Std Dev: 0.2507 +/- 0.0071	Std Dev: 0.4524 +/- 0.0059	Std Dev: 0.2285 +/- 0.0072



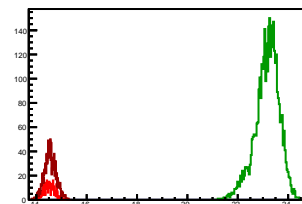
### Cycle 10, Sums

Entries: 618	Entries: 3074	Entries: 482
Mean: 14.6140 +/- 0.0092	Mean: 23.3993 +/- 0.0072	Mean: 14.6730 +/- 0.0101
Std Dev: 0.2282 +/- 0.0065	Std Dev: 0.3987 +/- 0.0051	Std Dev: 0.2221 +/- 0.0072



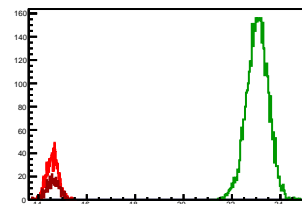
### Cycle 11, Sums

Entries: 438	Entries: 3816	Entries: 1305
Mean: 14.5078 +/- 0.0106	Mean: 23.1684 +/- 0.0078	Mean: 14.5498 +/- 0.0065
Std Dev: 0.2224 +/- 0.0075	Std Dev: 0.4814 +/- 0.0055	Std Dev: 0.2355 +/- 0.0046



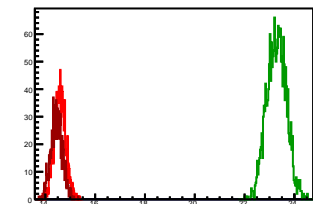
### Cycle 12, Sums

Entries: 1242	Entries: 4290	Entries: 580
Mean: 14.5811 +/- 0.0068	Mean: 23.0535 +/- 0.0068	Mean: 14.6004 +/- 0.0111
Std Dev: 0.2409 +/- 0.0048	Std Dev: 0.4485 +/- 0.0048	Std Dev: 0.2681 +/- 0.0079



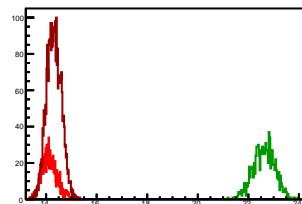
### Cycle 13, Sums

Entries: 1228	Entries: 1994	Entries: 911
Mean: 14.5794 +/- 0.0066	Mean: 23.2838 +/- 0.0087	Mean: 14.4571 +/- 0.0078
Std Dev: 0.2328 +/- 0.0047	Std Dev: 0.3895 +/- 0.0062	Std Dev: 0.2343 +/- 0.0055



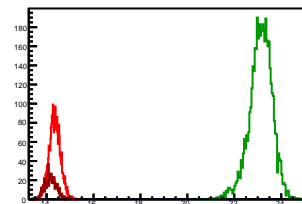
### Cycle 14, Sums

Entries: 905	Entries: 954	Entries: 3088
Mean: 14.1330 +/- 0.0096	Mean: 22.6152 +/- 0.0138	Mean: 14.3124 +/- 0.0052
Std Dev: 0.2902 +/- 0.0068	Std Dev: 0.4256 +/- 0.0097	Std Dev: 0.2885 +/- 0.0037



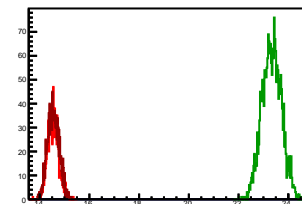
### Cycle 15, Sums

Entries: 2588	Entries: 4611	Entries: 807
Mean: 14.3521 +/- 0.0047	Mean: 23.1278 +/- 0.0072	Mean: 14.1624 +/- 0.0089
Std Dev: 0.2374 +/- 0.0033	Std Dev: 0.4857 +/- 0.0051	Std Dev: 0.2527 +/- 0.0063



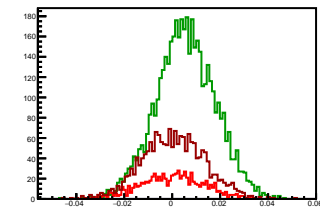
### Cycle 16, Sums

Entries: 1002	Entries: 2167	Entries: 1385
Mean: 14.5447 +/- 0.0071	Mean: 23.3359 +/- 0.0083	Mean: 14.5554 +/- 0.0063
Std Dev: 0.2236 +/- 0.0050	Std Dev: 0.3851 +/- 0.0059	Std Dev: 0.2328 +/- 0.0044



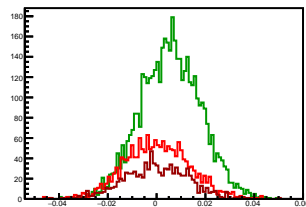
### Cycle 1, Asyms

Entries: 852	Entries: 4635	Entries: 1803
Mean: 0.0000 +/- 0.0004	Mean: 0.0056 +/- 0.0002	Mean: 0.0005 +/- 0.0003
Std Dev: 0.0131 +/- 0.0003	Std Dev: 0.0123 +/- 0.0001	Std Dev: 0.0130 +/- 0.0002



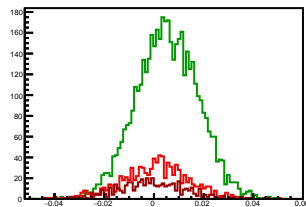
### Cycle 2, Asyms

Entries: 1755	Entries: 4580	Entries: 940
Mean: 0.0001 +/- 0.0003	Mean: 0.0056 +/- 0.0002	Mean: -0.0000 +/- 0.0004
Std Dev: 0.0132 +/- 0.0002	Std Dev: 0.0123 +/- 0.0001	Std Dev: 0.0131 +/- 0.0003



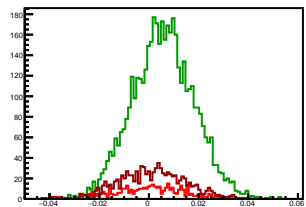
### Cycle 3, Asyms

Entries: 928	Entries: 4662	Entries: 491
Mean: 0.0006 +/- 0.0004	Mean: 0.0053 +/- 0.0002	Mean: -0.0010 +/- 0.0006
Std Dev: 0.0132 +/- 0.0003	Std Dev: 0.0124 +/- 0.0001	Std Dev: 0.0138 +/- 0.0004



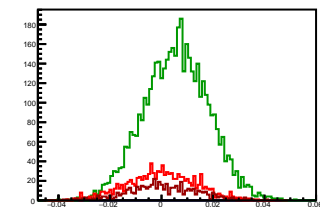
### Cycle 4, Asyms

Entries: 449	Entries: 4606	Entries: 960
Mean: 0.0002 +/- 0.0007	Mean: 0.0057 +/- 0.0002	Mean: 0.0013 +/- 0.0004
Std Dev: 0.0139 +/- 0.0005	Std Dev: 0.0124 +/- 0.0001	Std Dev: 0.0135 +/- 0.0003



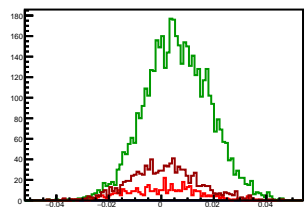
### Cycle 5, Asyms

Entries: 1072	Entries: 4619	Entries: 514
Mean: -0.0000 +/- 0.0004	Mean: 0.0058 +/- 0.0002	Mean: 0.0002 +/- 0.0006
Std Dev: 0.0131 +/- 0.0003	Std Dev: 0.0126 +/- 0.0001	Std Dev: 0.0132 +/- 0.0004



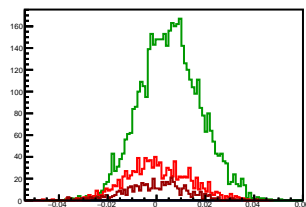
### Cycle 6, Asyms

Entries: 476	Entries: 4682	Entries: 1018
Mean: 0.0001 +/- 0.0006	Mean: 0.0061 +/- 0.0002	Mean: 0.0011 +/- 0.0004
Std Dev: 0.0133 +/- 0.0004	Std Dev: 0.0124 +/- 0.0001	Std Dev: 0.0129 +/- 0.0003



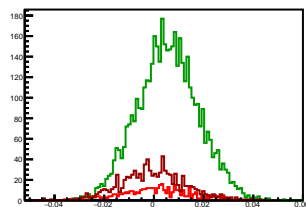
### Cycle 7, Asyms

Entries: 1091	Entries: 4600	Entries: 501
Mean: 0.0004 +/- 0.0004	Mean: 0.0056 +/- 0.0002	Mean: -0.0003 +/- 0.0006
Std Dev: 0.0133 +/- 0.0003	Std Dev: 0.0124 +/- 0.0001	Std Dev: 0.0127 +/- 0.0004



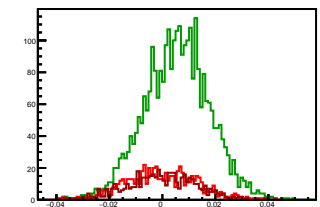
### Cycle 8, Asyms

Entries: 435	Entries: 4609	Entries: 897
Mean: 0.0008 +/- 0.0006	Mean: 0.0056 +/- 0.0002	Mean: -0.0005 +/- 0.0004
Std Dev: 0.0133 +/- 0.0005	Std Dev: 0.0123 +/- 0.0001	Std Dev: 0.0130 +/- 0.0003



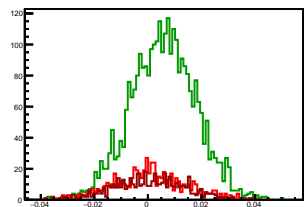
### Cycle 9, Asyms

Entries: 630	Entries: 2988	Entries: 506
Mean: -0.0004 +/- 0.0005	Mean: 0.0055 +/- 0.0002	Mean: -0.0003 +/- 0.0006
Std Dev: 0.0130 +/- 0.0004	Std Dev: 0.0122 +/- 0.0002	Std Dev: 0.0133 +/- 0.0004



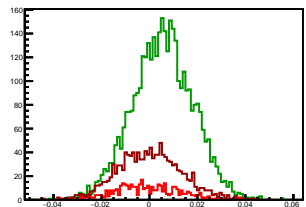
### Cycle 10, Asyms

Entries: 618	Entries: 3074	Entries: 482
Mean: 0.0005 +/- 0.0005	Mean: 0.0058 +/- 0.0002	Mean: 0.0004 +/- 0.0006
Std Dev: 0.0135 +/- 0.0004	Std Dev: 0.0121 +/- 0.0002	Std Dev: 0.0135 +/- 0.0004



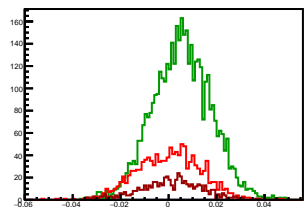
### Cycle 11, Asyms

Entries: 438	Entries: 3816	Entries: 1305
Mean: -0.0009 +/- 0.0006	Mean: 0.0054 +/- 0.0002	Mean: -0.0001 +/- 0.0004
Std Dev: 0.0133 +/- 0.0004	Std Dev: 0.0126 +/- 0.0001	Std Dev: 0.0132 +/- 0.0003



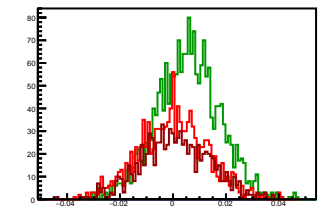
### Cycle 12, Asyms

Entries: 1242	Entries: 4290	Entries: 580
Mean: 0.0000 +/- 0.0004	Mean: 0.0054 +/- 0.0002	Mean: 0.0008 +/- 0.0005
Std Dev: 0.0132 +/- 0.0003	Std Dev: 0.0122 +/- 0.0001	Std Dev: 0.0130 +/- 0.0004



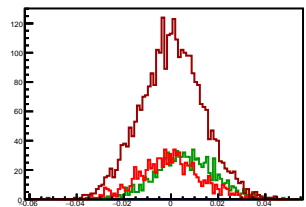
### Cycle 13, Asyms

Entries: 1228	Entries: 1994	Entries: 911
Mean: -0.0000 +/- 0.0004	Mean: 0.0057 +/- 0.0003	Mean: 0.0012 +/- 0.0004
Std Dev: 0.0130 +/- 0.0003	Std Dev: 0.0120 +/- 0.0002	Std Dev: 0.0129 +/- 0.0003



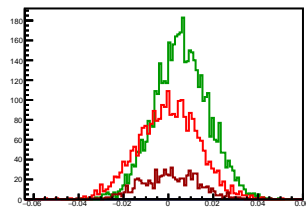
### Cycle 14, Asyms

Entries: 905	Entries: 954	Entries: 3088
Mean: -0.0003 +/- 0.0004	Mean: 0.0059 +/- 0.0004	Mean: 0.0003 +/- 0.0002
Std Dev: 0.0132 +/- 0.0003	Std Dev: 0.0126 +/- 0.0003	Std Dev: 0.0133 +/- 0.0002



### Cycle 15, Asyms

Entries: 2588	Entries: 4611	Entries: 807
Mean: 0.0001 +/- 0.0003	Mean: 0.0059 +/- 0.0002	Mean: 0.0008 +/- 0.0004
Std Dev: 0.0134 +/- 0.0002	Std Dev: 0.0120 +/- 0.0001	Std Dev: 0.0127 +/- 0.0003



### Cycle 16, Asyms

Entries: 1002	Entries: 2167	Entries: 1385
Mean: -0.0002 +/- 0.0004	Mean: 0.0054 +/- 0.0003	Mean: 0.0004 +/- 0.0003
Std Dev: 0.0129 +/- 0.0003	Std Dev: 0.0122 +/- 0.0002	Std Dev: 0.0129 +/- 0.0002

