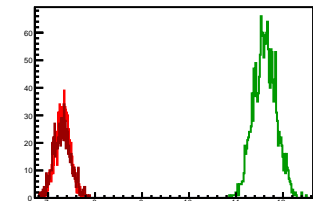


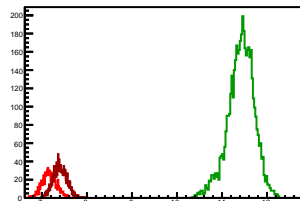
Cycle 1, PosHel

Entries: 1162	Entries: 1798	Entries: 927
Mean: 7.3212 +/- 0.0045	Mean: 11.6168 +/- 0.0057	Mean: 7.3053 +/- 0.0061
Std Dev: 0.1528 +/- 0.0032	Std Dev: 0.2404 +/- 0.0040	Std Dev: 0.1845 +/- 0.0043



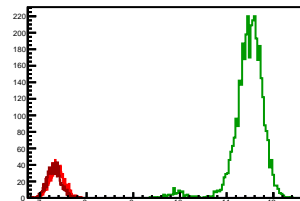
Cycle 2, PosHel

Entries: 899	Entries: 4618	Entries: 1167
Mean: 7.1676 +/- 0.0053	Mean: 11.4229 +/- 0.0043	Mean: 7.4046 +/- 0.0044
Std Dev: 0.1592 +/- 0.0038	Std Dev: 0.2941 +/- 0.0031	Std Dev: 0.1515 +/- 0.0031



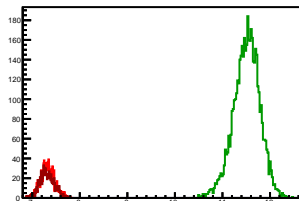
Cycle 3, PosHel

Entries: 1141	Entries: 3753	Entries: 1108
Mean: 7.3606 +/- 0.0045	Mean: 11.4654 +/- 0.0058	Mean: 7.3004 +/- 0.0044
Std Dev: 0.1527 +/- 0.0032	Std Dev: 0.3531 +/- 0.0041	Std Dev: 0.1473 +/- 0.0031



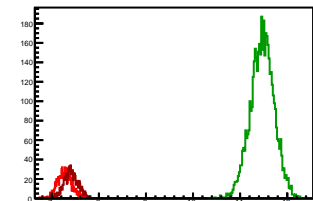
Cycle 4, PosHel

Entries: 1109	Entries: 4687	Entries: 910
Mean: 7.3199 +/- 0.0045	Mean: 11.5072 +/- 0.0041	Mean: 7.3131 +/- 0.0049
Std Dev: 0.1499 +/- 0.0032	Std Dev: 0.2777 +/- 0.0029	Std Dev: 0.1463 +/- 0.0034



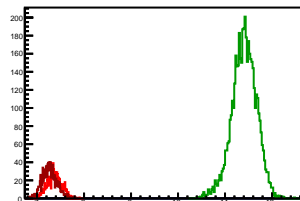
Cycle 5, PosHel

Entries: 859	Entries: 4611	Entries: 939
Mean: 7.2729 +/- 0.0052	Mean: 11.4706 +/- 0.0037	Mean: 7.4070 +/- 0.0049
Std Dev: 0.1510 +/- 0.0036	Std Dev: 0.2534 +/- 0.0028	Std Dev: 0.1496 +/- 0.0035



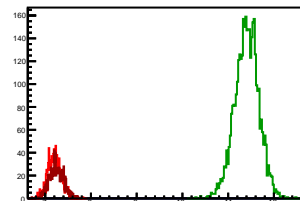
Cycle 6, PosHel

Entries: 913	Entries: 4693	Entries: 1092
Mean: 7.3670 +/- 0.0053	Mean: 11.4079 +/- 0.0039	Mean: 7.2626 +/- 0.0048
Std Dev: 0.1591 +/- 0.0037	Std Dev: 0.2639 +/- 0.0027	Std Dev: 0.1575 +/- 0.0034



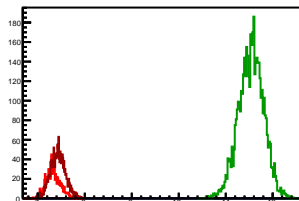
Cycle 7, PosHel

Entries: 1108	Entries: 3745	Entries: 901
Mean: 7.2036 +/- 0.0044	Mean: 11.4051 +/- 0.0043	Mean: 7.2487 +/- 0.0052
Std Dev: 0.1473 +/- 0.0031	Std Dev: 0.2622 +/- 0.0030	Std Dev: 0.1549 +/- 0.0036



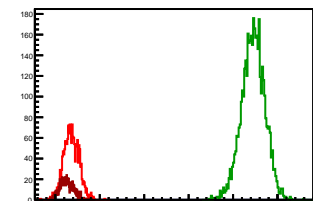
Cycle 8, PosHel

Entries: 857	Entries: 4646	Entries: 1637
Mean: 7.3270 +/- 0.0052	Mean: 11.5390 +/- 0.0039	Mean: 7.4307 +/- 0.0039
Std Dev: 0.1530 +/- 0.0037	Std Dev: 0.2672 +/- 0.0028	Std Dev: 0.1593 +/- 0.0028



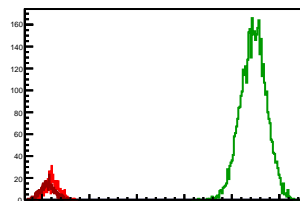
Cycle 9, PosHel

Entries: 1695	Entries: 4198	Entries: 669
Mean: 7.3598 +/- 0.0042	Mean: 11.4520 +/- 0.0041	Mean: 7.2571 +/- 0.0060
Std Dev: 0.1717 +/- 0.0029	Std Dev: 0.2628 +/- 0.0029	Std Dev: 0.1561 +/- 0.0043



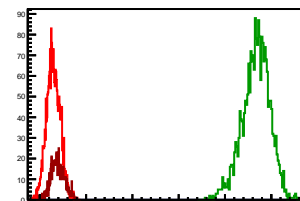
Cycle 10, PosHel

Entries: 626	Entries: 4467	Entries: 555
Mean: 7.2273 +/- 0.0056	Mean: 11.4577 +/- 0.0041	Mean: 7.1240 +/- 0.0064
Std Dev: 0.1409 +/- 0.0040	Std Dev: 0.2714 +/- 0.0029	Std Dev: 0.1511 +/- 0.0045



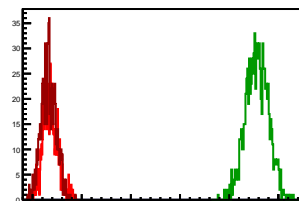
Cycle 11, PosHel

Entries: 2198	Entries: 2327	Entries: 692
Mean: 7.2907 +/- 0.0031	Mean: 11.6718 +/- 0.0062	Mean: 7.3924 +/- 0.0056
Std Dev: 0.1473 +/- 0.0022	Std Dev: 0.2989 +/- 0.0044	Std Dev: 0.1461 +/- 0.0039



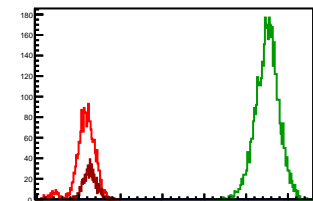
Cycle 12, PosHel

Entries: 664	Entries: 927	Entries: 851
Mean: 7.3587 +/- 0.0058	Mean: 11.5680 +/- 0.0076	Mean: 7.3269 +/- 0.0052
Std Dev: 0.1489 +/- 0.0041	Std Dev: 0.2303 +/- 0.0053	Std Dev: 0.1511 +/- 0.0037



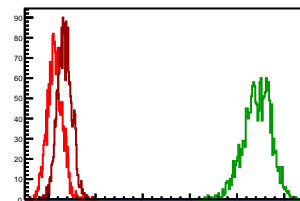
Cycle 13, PosHel

Entries: 2043	Entries: 4622	Entries: 883
Mean: 7.1576 +/- 0.0054	Mean: 11.5026 +/- 0.0041	Mean: 7.2670 +/- 0.0053
Std Dev: 0.2445 +/- 0.0038	Std Dev: 0.2774 +/- 0.0029	Std Dev: 0.1582 +/- 0.0038



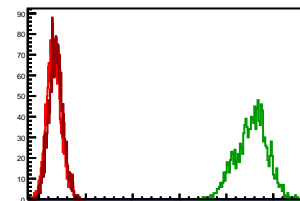
Cycle 14, PosHel

Entries: 2061	Entries: 1786	Entries: 2302
Mean: 7.1362 +/- 0.0035	Mean: 11.4261 +/- 0.0069	Mean: 7.3453 +/- 0.0032
Std Dev: 0.1580 +/- 0.0025	Std Dev: 0.2920 +/- 0.0049	Std Dev: 0.1520 +/- 0.0022



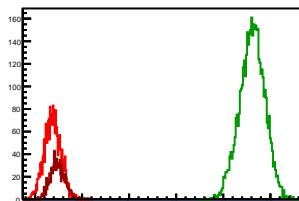
Cycle 15, PosHel

Entries: 2312	Entries: 1394	Entries: 2464
Mean: 7.3159 +/- 0.0032	Mean: 11.5380 +/- 0.0089	Mean: 7.3596 +/- 0.0030
Std Dev: 0.1533 +/- 0.0023	Std Dev: 0.3308 +/- 0.0063	Std Dev: 0.1492 +/- 0.0021



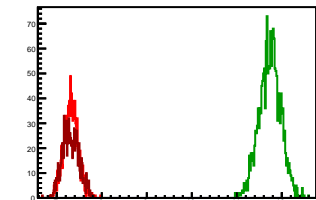
Cycle 16, PosHel

Entries: 2506	Entries: 4567	Entries: 942
Mean: 7.3723 +/- 0.0035	Mean: 11.6157 +/- 0.0039	Mean: 7.4796 +/- 0.0051
Std Dev: 0.1763 +/- 0.0025	Std Dev: 0.2667 +/- 0.0028	Std Dev: 0.1580 +/- 0.0036



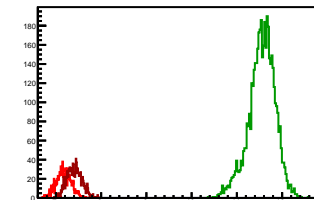
Cycle 1, NegHel

Entries: 1162	Entries: 1798	Entries: 927
Mean: 7.3185 +/- 0.0046	Mean: 11.7356 +/- 0.0057	Mean: 7.3093 +/- 0.0060
Std Dev: 0.1577 +/- 0.0033	Std Dev: 0.2397 +/- 0.0040	Std Dev: 0.1822 +/- 0.0042



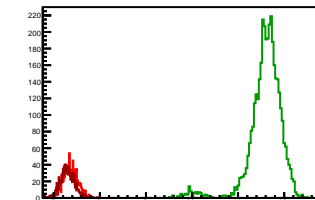
Cycle 2, NegHel

Entries: 899	Entries: 4618	Entries: 1167
Mean: 7.1706 +/- 0.0055	Mean: 11.5514 +/- 0.0043	Mean: 7.4088 +/- 0.0048
Std Dev: 0.1649 +/- 0.0039	Std Dev: 0.2948 +/- 0.0031	Std Dev: 0.1633 +/- 0.0034



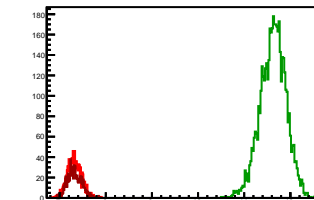
Cycle 3, NegHel

Entries: 1141	Entries: 3753	Entries: 1108
Mean: 7.3600 +/- 0.0046	Mean: 11.5913 +/- 0.0060	Mean: 7.2942 +/- 0.0044
Std Dev: 0.1551 +/- 0.0032	Std Dev: 0.3653 +/- 0.0042	Std Dev: 0.1473 +/- 0.0031



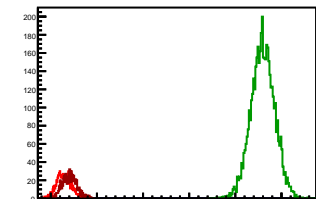
Cycle 4, NegHel

Entries: 1109	Entries: 4687	Entries: 910
Mean: 7.3171 +/- 0.0045	Mean: 11.6269 +/- 0.0041	Mean: 7.3244 +/- 0.0051
Std Dev: 0.1509 +/- 0.0032	Std Dev: 0.2814 +/- 0.0029	Std Dev: 0.1547 +/- 0.0036



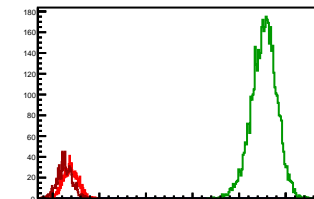
Cycle 5, NegHel

Entries: 859	Entries: 4611	Entries: 939
Mean: 7.2812 +/- 0.0053	Mean: 11.5948 +/- 0.0038	Mean: 7.4062 +/- 0.0050
Std Dev: 0.1562 +/- 0.0038	Std Dev: 0.2569 +/- 0.0027	Std Dev: 0.1541 +/- 0.0036



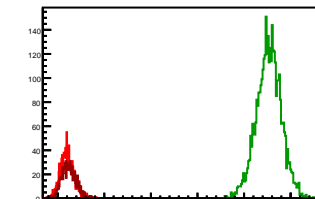
Cycle 6, NegHel

Entries: 913	Entries: 4693	Entries: 1092
Mean: 7.3799 +/- 0.0052	Mean: 11.5349 +/- 0.0040	Mean: 7.2612 +/- 0.0047
Std Dev: 0.1573 +/- 0.0037	Std Dev: 0.2706 +/- 0.0028	Std Dev: 0.1564 +/- 0.0033



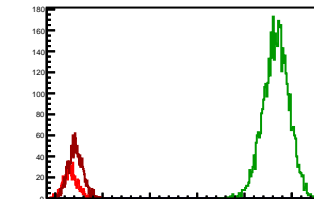
Cycle 7, NegHel

Entries: 1108	Entries: 3745	Entries: 901
Mean: 7.1985 +/- 0.0043	Mean: 11.5288 +/- 0.0043	Mean: 7.2395 +/- 0.0052
Std Dev: 0.1447 +/- 0.0031	Std Dev: 0.2654 +/- 0.0031	Std Dev: 0.1565 +/- 0.0037



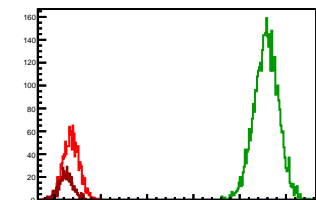
Cycle 8, NegHel

Entries: 857	Entries: 4646	Entries: 1637
Mean: 7.3254 +/- 0.0053	Mean: 11.6681 +/- 0.0040	Mean: 7.4256 +/- 0.0038
Std Dev: 0.1537 +/- 0.0037	Std Dev: 0.2715 +/- 0.0028	Std Dev: 0.1532 +/- 0.0027



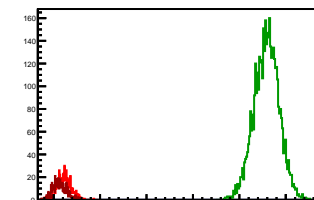
Cycle 9, NegHel

Entries: 1695	Entries: 4198	Entries: 669
Mean: 7.3602 +/- 0.0042	Mean: 11.5716 +/- 0.0040	Mean: 7.2492 +/- 0.0058
Std Dev: 0.1725 +/- 0.0030	Std Dev: 0.2623 +/- 0.0029	Std Dev: 0.1508 +/- 0.0041



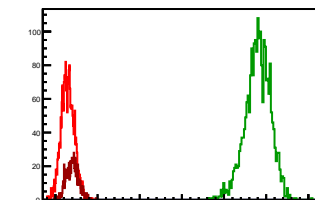
Cycle 10, NegHel

Entries: 626	Entries: 4467	Entries: 555
Mean: 7.2220 +/- 0.0060	Mean: 11.5841 +/- 0.0040	Mean: 7.1245 +/- 0.0062
Std Dev: 0.1500 +/- 0.0042	Std Dev: 0.2682 +/- 0.0028	Std Dev: 0.1449 +/- 0.0044



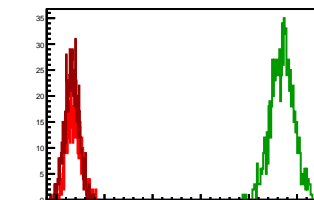
Cycle 11, NegHel

Entries: 2198	Entries: 2327	Entries: 692
Mean: 7.2911 +/- 0.0033	Mean: 11.7995 +/- 0.0062	Mean: 7.4002 +/- 0.0056
Std Dev: 0.1548 +/- 0.0023	Std Dev: 0.3010 +/- 0.0044	Std Dev: 0.1481 +/- 0.0040



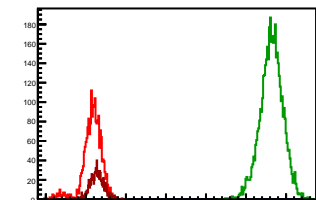
Cycle 12, NegHel

Entries: 664	Entries: 927	Entries: 851
Mean: 7.3649 +/- 0.0056	Mean: 11.6932 +/- 0.0079	Mean: 7.3228 +/- 0.0049
Std Dev: 0.1454 +/- 0.0040	Std Dev: 0.2398 +/- 0.0056	Std Dev: 0.1444 +/- 0.0035



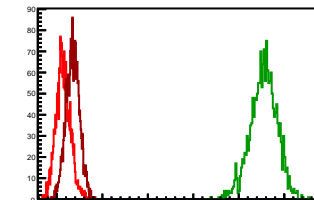
Cycle 13, NegHel

Entries: 2043	Entries: 4622	Entries: 883
Mean: 7.1599 +/- 0.0055	Mean: 11.6380 +/- 0.0041	Mean: 7.2751 +/- 0.0055
Std Dev: 0.2495 +/- 0.0039	Std Dev: 0.2813 +/- 0.0029	Std Dev: 0.1638 +/- 0.0039



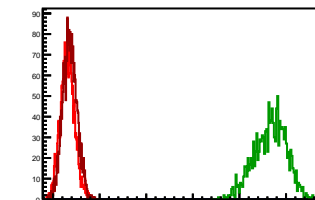
Cycle 14, NegHel

Entries: 2061	Entries: 1786	Entries: 2302
Mean: 7.1373 +/- 0.0035	Mean: 11.5485 +/- 0.0070	Mean: 7.3475 +/- 0.0031
Std Dev: 0.1574 +/- 0.0025	Std Dev: 0.2939 +/- 0.0049	Std Dev: 0.1500 +/- 0.0022



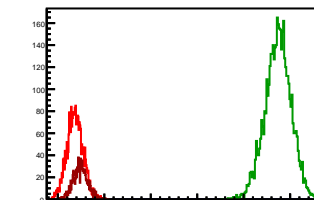
Cycle 15, NegHel

Entries: 2312	Entries: 1394	Entries: 2464
Mean: 7.3127 +/- 0.0032	Mean: 11.6622 +/- 0.0092	Mean: 7.3614 +/- 0.0030
Std Dev: 0.1527 +/- 0.0022	Std Dev: 0.3422 +/- 0.0065	Std Dev: 0.1514 +/- 0.0022



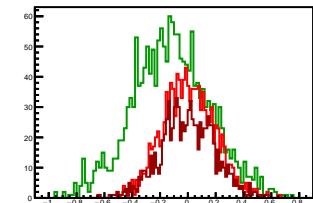
Cycle 16, NegHel

Entries: 2506	Entries: 4567	Entries: 942
Mean: 7.3682 +/- 0.0035	Mean: 11.7388 +/- 0.0041	Mean: 7.4851 +/- 0.0050
Std Dev: 0.1730 +/- 0.0024	Std Dev: 0.2789 +/- 0.0029	Std Dev: 0.1539 +/- 0.0035



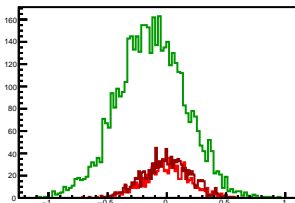
Cycle 1, Diffs

Entries: 1162	Entries: 1798	Entries: 927
Mean: 0.0026 +/- 0.0055	Mean: -0.1188 +/- 0.0065	Mean: -0.0040 +/- 0.0063
Std Dev: 0.1870 +/- 0.0039	Std Dev: 0.2770 +/- 0.0046	Std Dev: 0.1929 +/- 0.0045



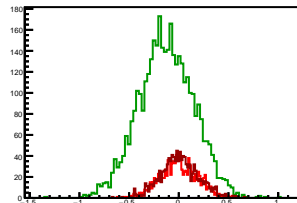
Cycle 2, Diffs

Entries: 899	Entries: 4618	Entries: 1167
Mean: -0.0030 +/- 0.0064	Mean: -0.1285 +/- 0.0042	Mean: -0.0042 +/- 0.0057
Std Dev: 0.1930 +/- 0.0046	Std Dev: 0.2851 +/- 0.0030	Std Dev: 0.1946 +/- 0.0040



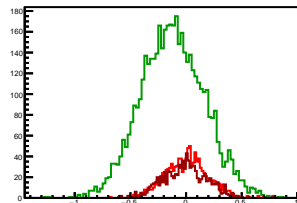
Cycle 3, Diffs

Entries: 1141	Entries: 3753	Entries: 1108
Mean: 0.0006 +/- 0.0056	Mean: -0.1260 +/- 0.0045	Mean: 0.0062 +/- 0.0057
Std Dev: 0.1906 +/- 0.0040	Std Dev: 0.2769 +/- 0.0032	Std Dev: 0.1895 +/- 0.0040



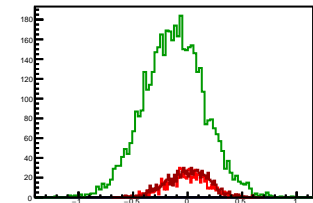
Cycle 4, Diffs

Entries: 1109	Entries: 4687	Entries: 910
Mean: 0.0028 +/- 0.0057	Mean: -0.1197 +/- 0.0042	Mean: -0.0114 +/- 0.0064
Std Dev: 0.1911 +/- 0.0041	Std Dev: 0.2849 +/- 0.0029	Std Dev: 0.1944 +/- 0.0046



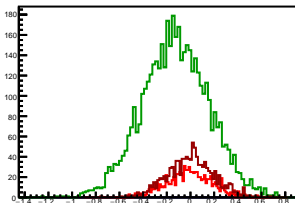
Cycle 5, Diffs

Entries: 859	Entries: 4611	Entries: 939
Mean: -0.0084 +/- 0.0064	Mean: -0.1242 +/- 0.0041	Mean: 0.0008 +/- 0.0064
Std Dev: 0.1874 +/- 0.0045	Std Dev: 0.2785 +/- 0.0029	Std Dev: 0.1953 +/- 0.0045



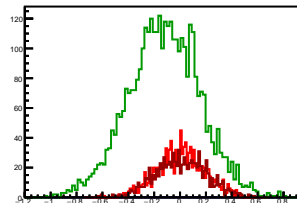
Cycle 6, Diffs

Entries: 913	Entries: 4693	Entries: 1092
Mean: -0.0129 +/- 0.0063	Mean: -0.1270 +/- 0.0041	Mean: 0.0014 +/- 0.0059
Std Dev: 0.1912 +/- 0.0045	Std Dev: 0.2814 +/- 0.0029	Std Dev: 0.1953 +/- 0.0042



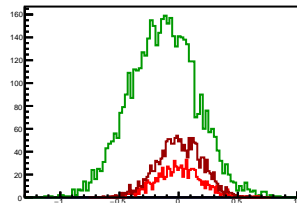
Cycle 7, Diffs

Entries: 1108	Entries: 3745	Entries: 901
Mean: 0.0051 +/- 0.0055	Mean: -0.1237 +/- 0.0045	Mean: 0.0092 +/- 0.0065
Std Dev: 0.1845 +/- 0.0039	Std Dev: 0.2763 +/- 0.0032	Std Dev: 0.1965 +/- 0.0046



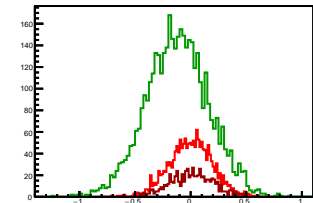
Cycle 8, Diffs

Entries: 857	Entries: 4646	Entries: 1637
Mean: 0.0016 +/- 0.0065	Mean: -0.1291 +/- 0.0041	Mean: 0.0051 +/- 0.0047
Std Dev: 0.1911 +/- 0.0046	Std Dev: 0.2824 +/- 0.0029	Std Dev: 0.1890 +/- 0.0033



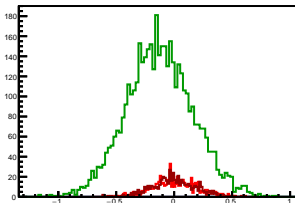
Cycle 9, Diffs

Entries: 1695	Entries: 4198	Entries: 669
Mean: -0.0005 +/- 0.0046	Mean: -0.1195 +/- 0.0043	Mean: 0.0079 +/- 0.0076
Std Dev: 0.1904 +/- 0.0033	Std Dev: 0.2811 +/- 0.0031	Std Dev: 0.1955 +/- 0.0053



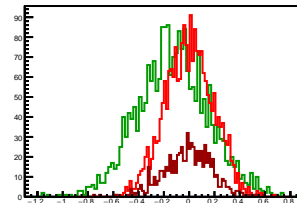
Cycle 10, Diffs

Entries: 626	Entries: 4467	Entries: 555
Mean: 0.0053 +/- 0.0075	Mean: -0.1264 +/- 0.0043	Mean: -0.0005 +/- 0.0081
Std Dev: 0.1886 +/- 0.0053	Std Dev: 0.2867 +/- 0.0030	Std Dev: 0.1911 +/- 0.0057



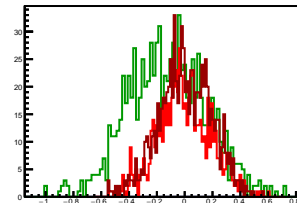
Cycle 11, Diffs

Entries: 2198	Entries: 2327	Entries: 692
Mean: -0.0005 +/- 0.0041	Mean: -0.1277 +/- 0.0058	Mean: -0.0078 +/- 0.0071
Std Dev: 0.1921 +/- 0.0029	Std Dev: 0.2799 +/- 0.0041	Std Dev: 0.1859 +/- 0.0050



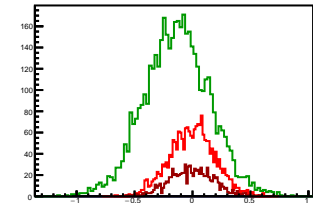
Cycle 12, Diffs

Entries: 664	Entries: 927	Entries: 851
Mean: -0.0062 +/- 0.0074	Mean: -0.1251 +/- 0.0092	Mean: 0.0041 +/- 0.0065
Std Dev: 0.1919 +/- 0.0053	Std Dev: 0.2809 +/- 0.0065	Std Dev: 0.1884 +/- 0.0046



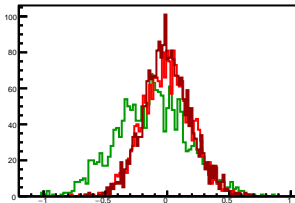
Cycle 13, Diffs

Entries: 2043	Entries: 4622	Entries: 883
Mean: -0.0023 +/- 0.0043	Mean: -0.1354 +/- 0.0041	Mean: -0.0080 +/- 0.0064
Std Dev: 0.1945 +/- 0.0030	Std Dev: 0.2808 +/- 0.0029	Std Dev: 0.1887 +/- 0.0045



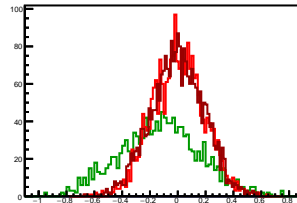
Cycle 14, Diffs

Entries: 2061	Entries: 1786	Entries: 2302
Mean: -0.0011 +/- 0.0042	Mean: -0.1224 +/- 0.0068	Mean: -0.0022 +/- 0.0040
Std Dev: 0.1929 +/- 0.0030	Std Dev: 0.2879 +/- 0.0048	Std Dev: 0.1904 +/- 0.0028



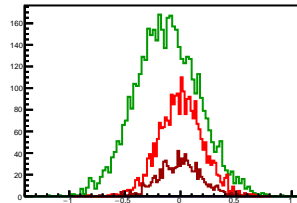
Cycle 15, Diffs

Entries: 2312	Entries: 1394	Entries: 2464
Mean: 0.0032 +/- 0.0039	Mean: -0.1242 +/- 0.0077	Mean: -0.0018 +/- 0.0038
Std Dev: 0.1870 +/- 0.0027	Std Dev: 0.2880 +/- 0.0055	Std Dev: 0.1897 +/- 0.0027



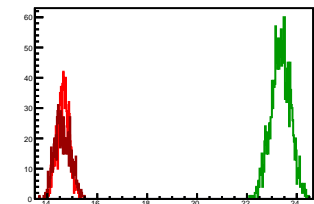
Cycle 16, Diffs

Entries: 2506	Entries: 4567	Entries: 942
Mean: 0.0041 +/- 0.0040	Mean: -0.1231 +/- 0.0042	Mean: -0.0055 +/- 0.0062
Std Dev: 0.1983 +/- 0.0028	Std Dev: 0.2851 +/- 0.0030	Std Dev: 0.1918 +/- 0.0044



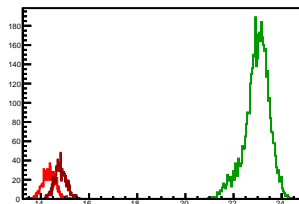
Cycle 1, Sums

Entries: 1162	Entries: 1798	Entries: 927
Mean: 14.6397 +/- 0.0073	Mean: 23.3524 +/- 0.0093	Mean: 14.6146 +/- 0.0102
Std Dev: 0.2479 +/- 0.0051	Std Dev: 0.3923 +/- 0.0065	Std Dev: 0.3119 +/- 0.0072



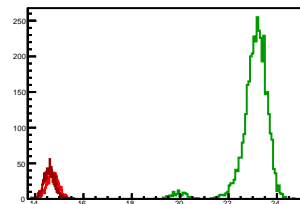
Cycle 2, Sums

Entries: 899	Entries: 4618	Entries: 1167
Mean: 14.3381 +/- 0.0087	Mean: 22.9742 +/- 0.0076	Mean: 14.8134 +/- 0.0073
Std Dev: 0.2605 +/- 0.0061	Std Dev: 0.5153 +/- 0.0054	Std Dev: 0.2478 +/- 0.0051



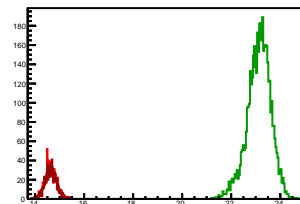
Cycle 3, Sums

Entries: 1141	Entries: 3753	Entries: 1108
Mean: 14.7207 +/- 0.0072	Mean: 23.0567 +/- 0.0108	Mean: 14.5947 +/- 0.0068
Std Dev: 0.2417 +/- 0.0051	Std Dev: 0.6630 +/- 0.0077	Std Dev: 0.2256 +/- 0.0048



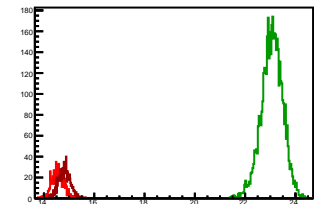
Cycle 4, Sums

Entries: 1109	Entries: 4687	Entries: 910
Mean: 14.6370 +/- 0.0070	Mean: 23.1340 +/- 0.0070	Mean: 14.6375 +/- 0.0076
Std Dev: 0.2322 +/- 0.0049	Std Dev: 0.4810 +/- 0.0050	Std Dev: 0.2300 +/- 0.0054



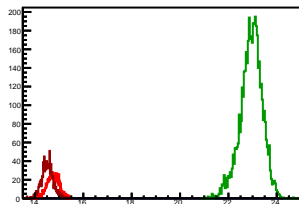
Cycle 5, Sums

Entries: 859	Entries: 4611	Entries: 939
Mean: 14.5541 +/- 0.0083	Mean: 23.0653 +/- 0.0063	Mean: 14.8132 +/- 0.0076
Std Dev: 0.2435 +/- 0.0059	Std Dev: 0.4276 +/- 0.0045	Std Dev: 0.2327 +/- 0.0054



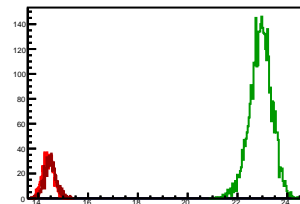
Cycle 6, Sums

Entries: 913	Entries: 4693	Entries: 1092
Mean: 14.7469 +/- 0.0083	Mean: 22.9428 +/- 0.0066	Mean: 14.5238 +/- 0.0074
Std Dev: 0.2520 +/- 0.0059	Std Dev: 0.4545 +/- 0.0047	Std Dev: 0.2458 +/- 0.0053



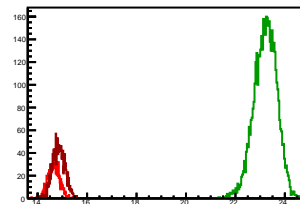
Cycle 7, Sums

Entries: 1108	Entries: 3745	Entries: 901
Mean: 14.4021 +/- 0.0068	Mean: 22.9339 +/- 0.0073	Mean: 14.4882 +/- 0.0080
Std Dev: 0.2263 +/- 0.0048	Std Dev: 0.4495 +/- 0.0052	Std Dev: 0.2416 +/- 0.0057



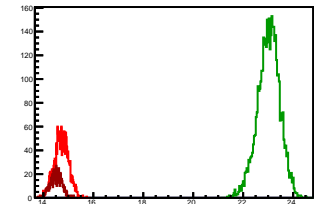
Cycle 8, Sums

Entries: 857	Entries: 4646	Entries: 1637
Mean: 14.6525 +/- 0.0082	Mean: 23.2070 +/- 0.0067	Mean: 14.8563 +/- 0.0062
Std Dev: 0.2399 +/- 0.0058	Std Dev: 0.4588 +/- 0.0048	Std Dev: 0.2490 +/- 0.0044



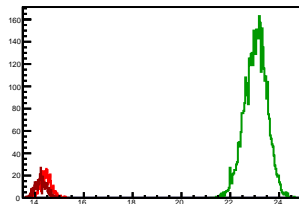
Cycle 9, Sums

Entries: 1695	Entries: 4198	Entries: 669
Mean: 14.7200 +/- 0.0070	Mean: 23.0236 +/- 0.0068	Mean: 14.5062 +/- 0.0091
Std Dev: 0.2867 +/- 0.0049	Std Dev: 0.4435 +/- 0.0048	Std Dev: 0.2366 +/- 0.0065



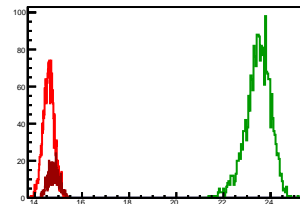
Cycle 10, Sums

Entries: 626	Entries: 4467	Entries: 555
Mean: 14.4493 +/- 0.0089	Mean: 23.0419 +/- 0.0068	Mean: 14.2485 +/- 0.0096
Std Dev: 0.2217 +/- 0.0063	Std Dev: 0.4572 +/- 0.0048	Std Dev: 0.2262 +/- 0.0068



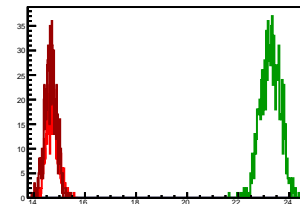
Cycle 11, Sums

Entries: 2198	Entries: 2327	Entries: 692
Mean: 14.5818 +/- 0.0050	Mean: 23.4714 +/- 0.0110	Mean: 14.7926 +/- 0.0087
Std Dev: 0.2333 +/- 0.0035	Std Dev: 0.5284 +/- 0.0077	Std Dev: 0.2280 +/- 0.0061



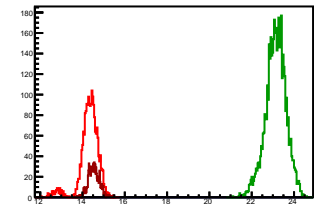
Cycle 12, Sums

Entries: 664	Entries: 927	Entries: 851
Mean: 14.7235 +/- 0.0087	Mean: 23.2612 +/- 0.0124	Mean: 14.6497 +/- 0.0078
Std Dev: 0.2232 +/- 0.0061	Std Dev: 0.3771 +/- 0.0088	Std Dev: 0.2277 +/- 0.0055



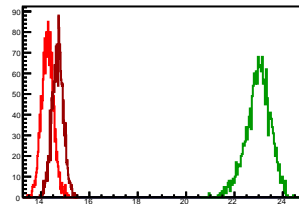
Cycle 13, Sums

Entries: 2043	Entries: 4622	Entries: 883
Mean: 14.3175 +/- 0.0100	Mean: 23.1406 +/- 0.0071	Mean: 14.5421 +/- 0.0088
Std Dev: 0.4542 +/- 0.0071	Std Dev: 0.4830 +/- 0.0050	Std Dev: 0.2610 +/- 0.0062



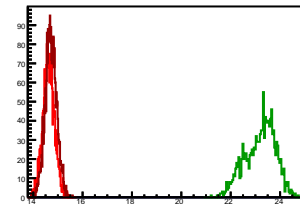
Cycle 14, Sums

Entries: 2061	Entries: 1786	Entries: 2302
Mean: 14.2735 +/- 0.0055	Mean: 22.9746 +/- 0.0121	Mean: 14.6928 +/- 0.0049
Std Dev: 0.2496 +/- 0.0039	Std Dev: 0.5104 +/- 0.0085	Std Dev: 0.2344 +/- 0.0035



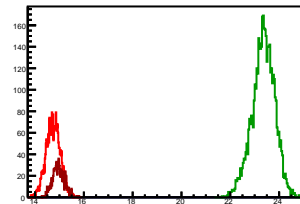
Cycle 15, Sums

Entries: 2312	Entries: 1394	Entries: 2464
Mean: 14.6286 +/- 0.0050	Mean: 23.2001 +/- 0.0163	Mean: 14.7211 +/- 0.0047
Std Dev: 0.2422 +/- 0.0036	Std Dev: 0.6083 +/- 0.0115	Std Dev: 0.2332 +/- 0.0033



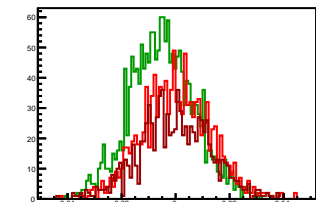
Cycle 16, Sums

Entries: 2506	Entries: 4567	Entries: 942
Mean: 14.7406 +/- 0.0057	Mean: 23.3545 +/- 0.0069	Mean: 14.9647 +/- 0.0080
Std Dev: 0.2875 +/- 0.0041	Std Dev: 0.4653 +/- 0.0049	Std Dev: 0.2460 +/- 0.0057



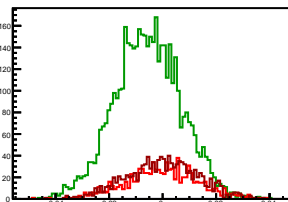
Cycle 1, Asyms

Entries: 1162	Entries: 1798	Entries: 927
Mean: -0.0002 ± 0.0004	Mean: -0.0051 ± 0.0003	Mean: -0.0003 ± 0.0004
Std Dev: 0.0128 ± 0.0003	Std Dev: 0.0118 ± 0.0002	Std Dev: 0.0132 ± 0.0003



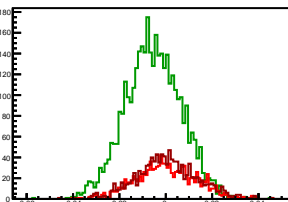
Cycle 2, Asyms

Entries: 899	Entries: 4618	Entries: 1167
Mean: -0.0002 ± 0.0004	Mean: -0.0056 ± 0.0002	Mean: -0.0003 ± 0.0004
Std Dev: 0.0134 ± 0.0003	Std Dev: 0.0124 ± 0.0001	Std Dev: 0.0131 ± 0.0003



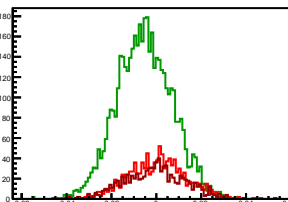
Cycle 3, Asyms

Entries: 1141	Entries: 3753	Entries: 1108
Mean: 0.0000 ± 0.0004	Mean: -0.0055 ± 0.0002	Mean: 0.0004 ± 0.0004
Std Dev: 0.0129 ± 0.0003	Std Dev: 0.0120 ± 0.0001	Std Dev: 0.0130 ± 0.0003



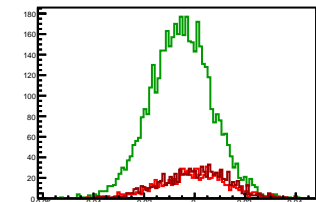
Cycle 4, Asyms

Entries: 1109	Entries: 4687	Entries: 910
Mean: 0.0002 ± 0.0004	Mean: -0.0052 ± 0.0002	Mean: -0.0008 ± 0.0004
Std Dev: 0.0130 ± 0.0003	Std Dev: 0.0123 ± 0.0001	Std Dev: 0.0132 ± 0.0003



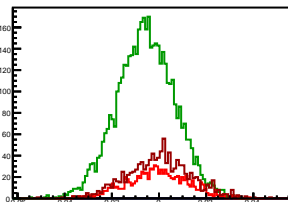
Cycle 5, Asyms

Entries: 859	Entries: 4611	Entries: 939
Mean: -0.0006 ± 0.0004	Mean: -0.0054 ± 0.0002	Mean: 0.0001 ± 0.0004
Std Dev: 0.0129 ± 0.0003	Std Dev: 0.0121 ± 0.0001	Std Dev: 0.0132 ± 0.0003



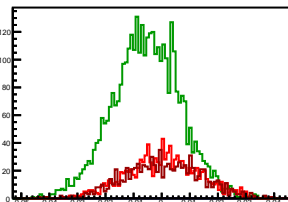
Cycle 6, Asyms

Entries: 913	Entries: 4693	Entries: 1092
Mean: -0.0009 ± 0.0004	Mean: -0.0055 ± 0.0002	Mean: 0.0001 ± 0.0004
Std Dev: 0.0129 ± 0.0003	Std Dev: 0.0123 ± 0.0001	Std Dev: 0.0134 ± 0.0004



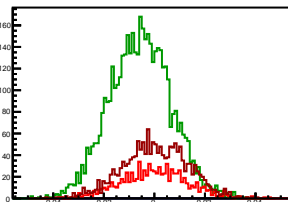
Cycle 7, Asyms

Entries: 1108	Entries: 3745	Entries: 901
Mean: 0.0004 ± 0.0004	Mean: -0.0054 ± 0.0002	Mean: 0.0006 ± 0.0005
Std Dev: 0.0128 ± 0.0003	Std Dev: 0.0120 ± 0.0001	Std Dev: 0.0136 ± 0.0003



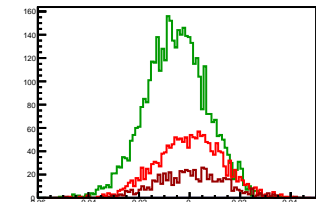
Cycle 8, Asyms

Entries: 857	Entries: 4646	Entries: 1637
Mean: 0.0001 ± 0.0004	Mean: -0.0056 ± 0.0002	Mean: 0.0003 ± 0.0003
Std Dev: 0.0130 ± 0.0003	Std Dev: 0.0122 ± 0.0001	Std Dev: 0.0127 ± 0.0002



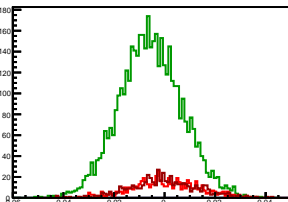
Cycle 9, Asyms

Entries: 1695	Entries: 4198	Entries: 669
Mean: -0.0000 ± 0.0003	Mean: -0.0052 ± 0.0002	Mean: 0.0005 ± 0.0005
Std Dev: 0.0129 ± 0.0002	Std Dev: 0.0122 ± 0.0001	Std Dev: 0.0134 ± 0.0004



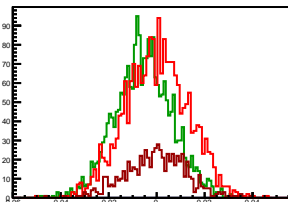
Cycle 10, Asyms

Entries: 626	Entries: 4467	Entries: 555
Mean: 0.0004 ± 0.0005	Mean: -0.0055 ± 0.0002	Mean: -0.0000 ± 0.0006
Std Dev: 0.0130 ± 0.0004	Std Dev: 0.0124 ± 0.0001	Std Dev: 0.0134 ± 0.0004



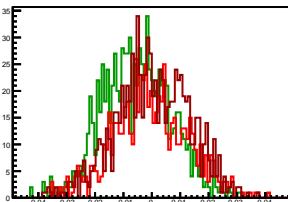
Cycle 11, Asyms

Entries: 2198	Entries: 2327	Entries: 692
Mean: -0.0000 ± 0.0003	Mean: -0.0054 ± 0.0002	Mean: -0.0005 ± 0.0005
Std Dev: 0.0132 ± 0.0002	Std Dev: 0.0119 ± 0.0002	Std Dev: 0.0125 ± 0.0003



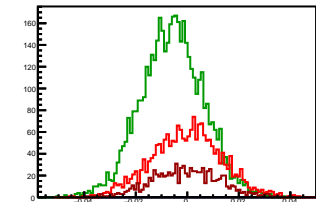
Cycle 12, Asyms

Entries: 664	Entries: 927	Entries: 851
Mean: -0.0004 ± 0.0005	Mean: -0.0054 ± 0.0004	Mean: 0.0003 ± 0.0004
Std Dev: 0.0130 ± 0.0004	Std Dev: 0.0121 ± 0.0003	Std Dev: 0.0129 ± 0.0003



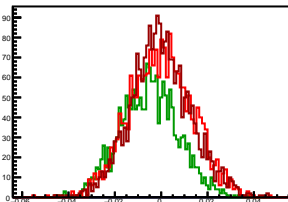
Cycle 13, Asyms

Entries: 2043	Entries: 4622	Entries: 883
Mean: -0.0001 ± 0.0003	Mean: -0.0058 ± 0.0002	Mean: -0.0005 ± 0.0004
Std Dev: 0.0136 ± 0.0002	Std Dev: 0.0121 ± 0.0001	Std Dev: 0.0130 ± 0.0003



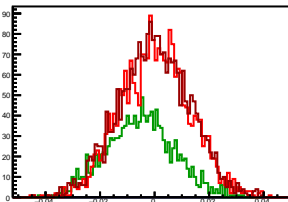
Cycle 14, Asyms

Entries: 2061	Entries: 1786	Entries: 2302
Mean: -0.0001 ± 0.0003	Mean: -0.0053 ± 0.0003	Mean: -0.0001 ± 0.0003
Std Dev: 0.0135 ± 0.0002	Std Dev: 0.0125 ± 0.0002	Std Dev: 0.0129 ± 0.0002



Cycle 15, Asyms

Entries: 2312	Entries: 1394	Entries: 2464
Mean: 0.0002 ± 0.0003	Mean: -0.0053 ± 0.0003	Mean: -0.0001 ± 0.0003
Std Dev: 0.0128 ± 0.0002	Std Dev: 0.0124 ± 0.0002	Std Dev: 0.0129 ± 0.0002



Cycle 16, Asyms

Entries: 2506	Entries: 4567	Entries: 942
Mean: 0.0003 ± 0.0003	Mean: -0.0053 ± 0.0002	Mean: -0.0004 ± 0.0004
Std Dev: 0.0134 ± 0.0002	Std Dev: 0.0122 ± 0.0001	Std Dev: 0.0128 ± 0.0003

