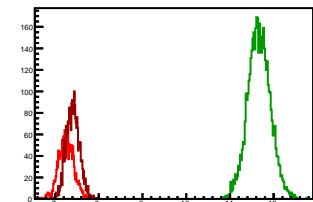


Cycle 1, PosHel

Entries: 1688 Entries: 4614 Entries: 2604

Mean: 7.2567 +/- 0.0042 Mean: 11.6660 +/- 0.0038 Mean: 7.4081 +/- 0.0029

Std Dev: 0.1712 +/- 0.0029 Std Dev: 0.2573 +/- 0.0027 Std Dev: 0.1501 +/- 0.0021

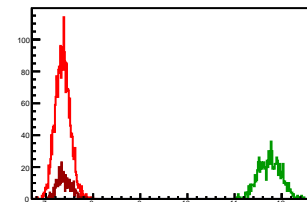


Cycle 2, PosHel

Entries: 2556 Entries: 921 Entries: 478

Mean: 7.3541 +/- 0.0031 Mean: 11.7453 +/- 0.0078 Mean: 7.3839 +/- 0.0069

Std Dev: 0.1583 +/- 0.0022 Std Dev: 0.2363 +/- 0.0055 Std Dev: 0.1502 +/- 0.0049

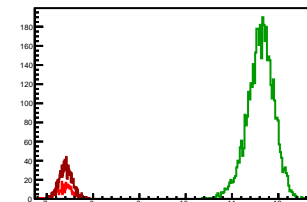


Cycle 3, PosHel

Entries: 428 Entries: 4701 Entries: 1090

Mean: 7.3760 +/- 0.0062 Mean: 11.6155 +/- 0.0042 Mean: 7.4102 +/- 0.0045

Std Dev: 0.1687 +/- 0.0058 Std Dev: 0.2890 +/- 0.0030 Std Dev: 0.1485 +/- 0.0032

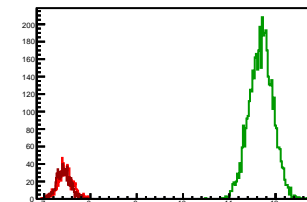


Cycle 4, PosHel

Entries: 1048 Entries: 4600 Entries: 1073

Mean: 7.4588 +/- 0.0050 Mean: 11.6880 +/- 0.0038 Mean: 7.4190 +/- 0.0046

Std Dev: 0.1605 +/- 0.0035 Std Dev: 0.2561 +/- 0.0027 Std Dev: 0.1522 +/- 0.0033

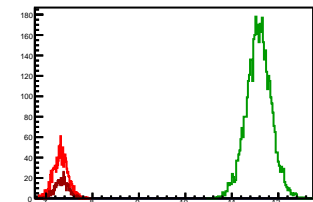


Cycle 5, PosHel

Entries: 1396 Entries: 4653 Entries: 567

Mean: 7.3133 +/- 0.0043 Mean: 11.5778 +/- 0.0039 Mean: 7.3346 +/- 0.0061

Std Dev: 0.1590 +/- 0.0030 Std Dev: 0.2684 +/- 0.0028 Std Dev: 0.1456 +/- 0.0043

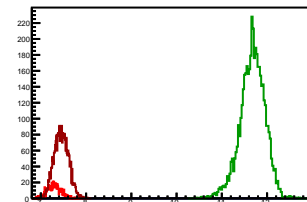


Cycle 6, PosHel

Entries: 567 Entries: 4619 Entries: 2688

Mean: 7.2974 +/- 0.0065 Mean: 11.6769 +/- 0.0041 Mean: 7.4510 +/- 0.0031

Std Dev: 0.1550 +/- 0.0046 Std Dev: 0.2767 +/- 0.0029 Std Dev: 0.1593 +/- 0.0022

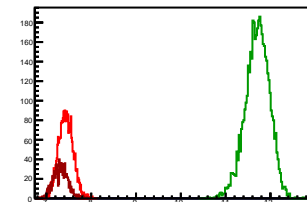


Cycle 7, PosHel

Entries: 2603 Entries: 4634 Entries: 1016

Mean: 7.4314 +/- 0.0032 Mean: 11.7080 +/- 0.0039 Mean: 7.3201 +/- 0.0051

Std Dev: 0.1632 +/- 0.0023 Std Dev: 0.2689 +/- 0.0028 Std Dev: 0.1612 +/- 0.0036

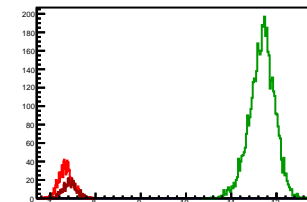


Cycle 8, PosHel

Entries: 1016 Entries: 4667 Entries: 568

Mean: 7.3415 +/- 0.0049 Mean: 11.6814 +/- 0.0041 Mean: 7.4343 +/- 0.0064

Std Dev: 0.1562 +/- 0.0035 Std Dev: 0.2773 +/- 0.0029 Std Dev: 0.1528 +/- 0.0045

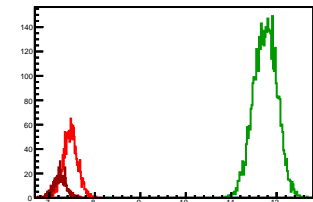


Cycle 9, PosHel

Entries: 1673 Entries: 4579 Entries: 573

Mean: 7.4686 +/- 0.0039 Mean: 11.7470 +/- 0.0038 Mean: 7.2304 +/- 0.0060

Std Dev: 0.1581 +/- 0.0027 Std Dev: 0.2583 +/- 0.0027 Std Dev: 0.1437 +/- 0.0042

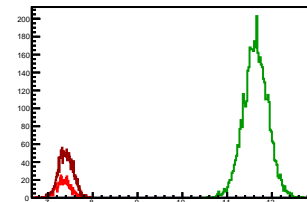


Cycle 10, PosHel

Entries: 580 Entries: 4629 Entries: 1651

Mean: 7.3504 +/- 0.0065 Mean: 11.6362 +/- 0.0040 Mean: 7.3993 +/- 0.0040

Std Dev: 0.1572 +/- 0.0046 Std Dev: 0.2747 +/- 0.0029 Std Dev: 0.1608 +/- 0.0028

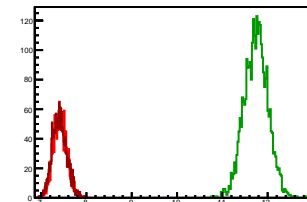


Cycle 11, PosHel

Entries: 1652 Entries: 2970 Entries: 1798

Mean: 7.4211 +/- 0.0037 Mean: 11.7429 +/- 0.0048 Mean: 7.4073 +/- 0.0037

Std Dev: 0.1509 +/- 0.0026 Std Dev: 0.2618 +/- 0.0034 Std Dev: 0.1564 +/- 0.0026

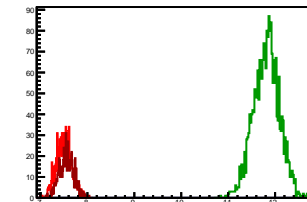


Cycle 12, PosHel

Entries: 1013 Entries: 2342 Entries: 714

Mean: 7.5033 +/- 0.0050 Mean: 11.8124 +/- 0.0057 Mean: 7.5576 +/- 0.0057

Std Dev: 0.1599 +/- 0.0036 Std Dev: 0.2744 +/- 0.0040 Std Dev: 0.1525 +/- 0.0040

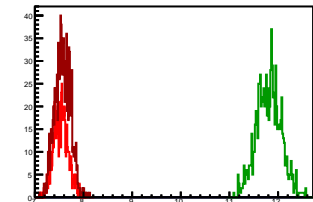


Cycle 13, PosHel

Entries: 654 Entries: 909 Entries: 1085

Mean: 7.5370 +/- 0.0059 Mean: 11.8085 +/- 0.0084 Mean: 7.5688 +/- 0.0048

Std Dev: 0.1519 +/- 0.0042 Std Dev: 0.2527 +/- 0.0059 Std Dev: 0.1588 +/- 0.0034

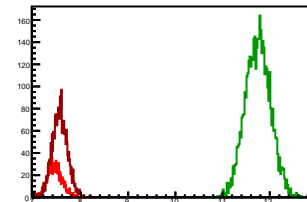


Cycle 14, PosHel

Entries: 1050 Entries: 4615 Entries: 2344

Mean: 7.4437 +/- 0.0048 Mean: 11.7461 +/- 0.0039 Mean: 7.5531 +/- 0.0033

Std Dev: 0.1558 +/- 0.0034 Std Dev: 0.2654 +/- 0.0028 Std Dev: 0.1598 +/- 0.0023

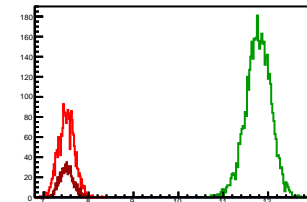


Cycle 15, PosHel

Entries: 2321 Entries: 4604 Entries: 1050

Mean: 7.5057 +/- 0.0037 Mean: 11.7795 +/- 0.0041 Mean: 7.5104 +/- 0.0047

Std Dev: 0.1791 +/- 0.0026 Std Dev: 0.2797 +/- 0.0029 Std Dev: 0.1529 +/- 0.0033

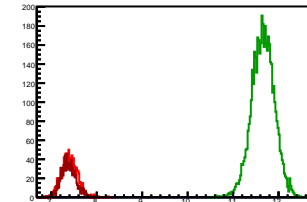


Cycle 16, PosHel

Entries: 1066 Entries: 4641 Entries: 1067

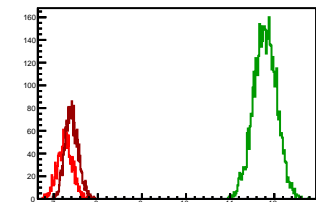
Mean: 7.3986 +/- 0.0053 Mean: 11.6568 +/- 0.0037 Mean: 7.3785 +/- 0.0051

Std Dev: 0.1719 +/- 0.0037 Std Dev: 0.2514 +/- 0.0026 Std Dev: 0.1656 +/- 0.0036



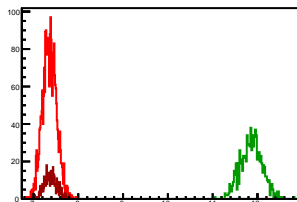
Cycle 1, NegHel

Entries: 1688	Entries: 4614	Entries: 2604
Mean: 7.2556 +/- 0.0041	Mean: 11.7922 +/- 0.0038	Mean: 7.4066 +/- 0.0029
Std Dev: 0.1700 +/- 0.0029	Std Dev: 0.2606 +/- 0.0027	Std Dev: 0.1483 +/- 0.0021



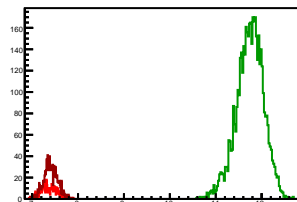
Cycle 2, NegHel

Entries: 2556	Entries: 921	Entries: 478
Mean: 7.3589 +/- 0.0031	Mean: 11.8653 +/- 0.0080	Mean: 7.3822 +/- 0.0066
Std Dev: 0.1571 +/- 0.0022	Std Dev: 0.2425 +/- 0.0056	Std Dev: 0.1450 +/- 0.0047



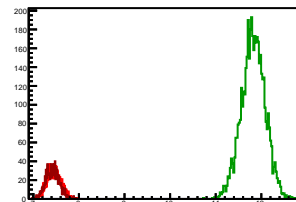
Cycle 3, NegHel

Entries: 428	Entries: 4701	Entries: 1090
Mean: 7.3650 +/- 0.0079	Mean: 11.7430 +/- 0.0043	Mean: 7.4070 +/- 0.0047
Std Dev: 0.1637 +/- 0.0056	Std Dev: 0.2976 +/- 0.0031	Std Dev: 0.1538 +/- 0.0033



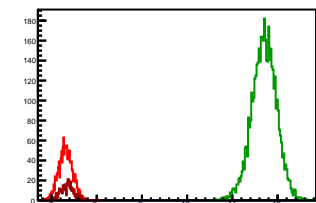
Cycle 4, NegHel

Entries: 1048	Entries: 4600	Entries: 1073
Mean: 7.4571 +/- 0.0048	Mean: 11.8236 +/- 0.0039	Mean: 7.4218 +/- 0.0045
Std Dev: 0.1565 +/- 0.0034	Std Dev: 0.2622 +/- 0.0027	Std Dev: 0.1482 +/- 0.0032



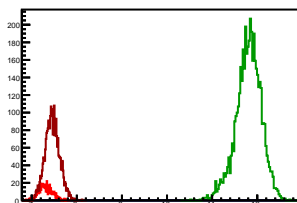
Cycle 5, NegHel

Entries: 1396	Entries: 4653	Entries: 567
Mean: 7.3130 +/- 0.0042	Mean: 11.7022 +/- 0.0040	Mean: 7.3476 +/- 0.0060
Std Dev: 0.1559 +/- 0.0030	Std Dev: 0.2728 +/- 0.0028	Std Dev: 0.1428 +/- 0.0042



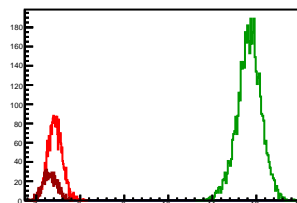
Cycle 6, NegHel

Entries: 567	Entries: 4619	Entries: 2688
Mean: 7.3048 +/- 0.0062	Mean: 11.8072 +/- 0.0041	Mean: 7.4562 +/- 0.0031
Std Dev: 0.1476 +/- 0.0044	Std Dev: 0.2820 +/- 0.0029	Std Dev: 0.1588 +/- 0.0022



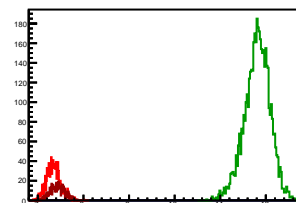
Cycle 7, NegHel

Entries: 2603	Entries: 4634	Entries: 1016
Mean: 7.4277 +/- 0.0032	Mean: 11.8372 +/- 0.0040	Mean: 7.3201 +/- 0.0050
Std Dev: 0.1637 +/- 0.0023	Std Dev: 0.2743 +/- 0.0028	Std Dev: 0.1588 +/- 0.0035



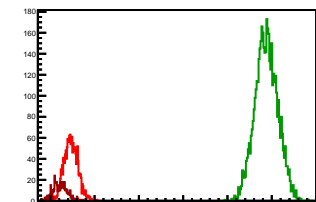
Cycle 8, NegHel

Entries: 1016	Entries: 4667	Entries: 568
Mean: 7.3411 +/- 0.0049	Mean: 11.8085 +/- 0.0041	Mean: 7.4299 +/- 0.0065
Std Dev: 0.1554 +/- 0.0034	Std Dev: 0.2807 +/- 0.0029	Std Dev: 0.1560 +/- 0.0046



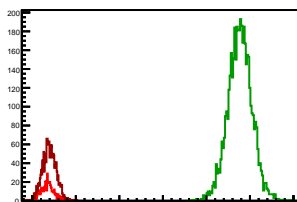
Cycle 9, NegHel

Entries: 1673	Entries: 4579	Entries: 573
Mean: 7.4663 +/- 0.0038	Mean: 11.8776 +/- 0.0038	Mean: 7.2191 +/- 0.0066
Std Dev: 0.1552 +/- 0.0027	Std Dev: 0.2572 +/- 0.0027	Std Dev: 0.1586 +/- 0.0047



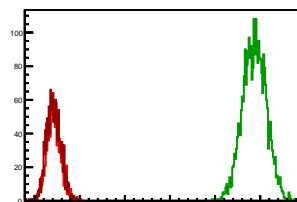
Cycle 10, NegHel

Entries: 580	Entries: 4629	Entries: 1651
Mean: 7.3468 +/- 0.0063	Mean: 11.7681 +/- 0.0041	Mean: 7.3927 +/- 0.0039
Std Dev: 0.1516 +/- 0.0045	Std Dev: 0.2785 +/- 0.0029	Std Dev: 0.1569 +/- 0.0027



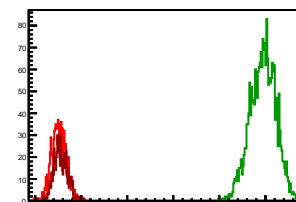
Cycle 11, NegHel

Entries: 1652	Entries: 2970	Entries: 1798
Mean: 7.4244 +/- 0.0037	Mean: 11.8723 +/- 0.0048	Mean: 7.4185 +/- 0.0037
Std Dev: 0.1508 +/- 0.0026	Std Dev: 0.2638 +/- 0.0034	Std Dev: 0.1564 +/- 0.0026



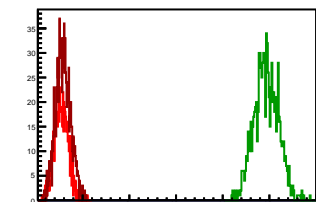
Cycle 12, NegHel

Entries: 1013	Entries: 2342	Entries: 714
Mean: 7.5144 +/- 0.0050	Mean: 11.9461 +/- 0.0057	Mean: 7.5550 +/- 0.0056
Std Dev: 0.1595 +/- 0.0035	Std Dev: 0.2774 +/- 0.0041	Std Dev: 0.1487 +/- 0.0039



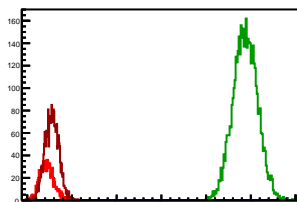
Cycle 13, NegHel

Entries: 654	Entries: 909	Entries: 1085
Mean: 7.5409 +/- 0.0058	Mean: 11.9291 +/- 0.0086	Mean: 7.5809 +/- 0.0049
Std Dev: 0.1476 +/- 0.0041	Std Dev: 0.2583 +/- 0.0061	Std Dev: 0.1599 +/- 0.0034



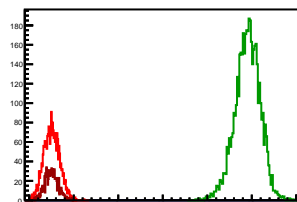
Cycle 14, NegHel

Entries: 1050	Entries: 4615	Entries: 2344
Mean: 7.4368 +/- 0.0049	Mean: 11.8757 +/- 0.0040	Mean: 7.5500 +/- 0.0032
Std Dev: 0.1585 +/- 0.0035	Std Dev: 0.2727 +/- 0.0028	Std Dev: 0.1537 +/- 0.0022



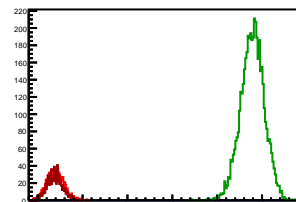
Cycle 15, NegHel

Entries: 2321	Entries: 4604	Entries: 1050
Mean: 7.5046 +/- 0.0037	Mean: 11.9036 +/- 0.0042	Mean: 7.5014 +/- 0.0047
Std Dev: 0.1771 +/- 0.0026	Std Dev: 0.2830 +/- 0.0029	Std Dev: 0.1512 +/- 0.0033



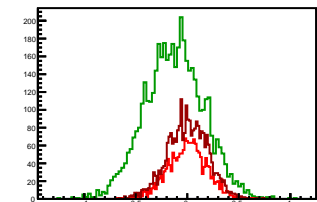
Cycle 16, NegHel

Entries: 1066	Entries: 4641	Entries: 1067
Mean: 7.3962 +/- 0.0054	Mean: 11.7846 +/- 0.0039	Mean: 7.3793 +/- 0.0053
Std Dev: 0.1771 +/- 0.0038	Std Dev: 0.2624 +/- 0.0027	Std Dev: 0.1727 +/- 0.0037



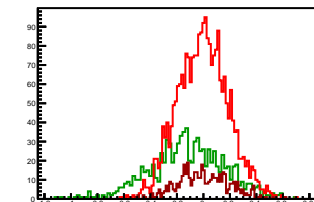
Cycle 1, Diffs

Entries: 1688	Entries: 4614	Entries: 2604
Mean: 0.0010 +/- 0.0046	Mean: -0.1261 +/- 0.0042	Mean: 0.0015 +/- 0.0038
Std Dev: 0.1891 +/- 0.0033	Std Dev: 0.2871 +/- 0.0030	Std Dev: 0.1950 +/- 0.0027



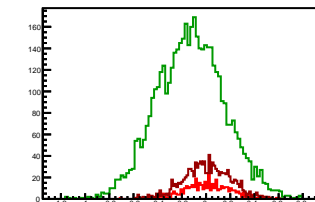
Cycle 2, Diffs

Entries: 2556	Entries: 921	Entries: 478
Mean: -0.0048 +/- 0.0038	Mean: -0.1200 +/- 0.0094	Mean: 0.0016 +/- 0.0088
Std Dev: 0.1916 +/- 0.0027	Std Dev: 0.2853 +/- 0.0066	Std Dev: 0.1932 +/- 0.0062



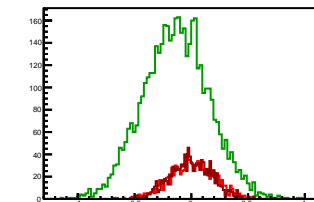
Cycle 3, Diffs

Entries: 428	Entries: 4701	Entries: 1090
Mean: 0.0109 +/- 0.0091	Mean: -0.1276 +/- 0.0041	Mean: 0.0032 +/- 0.0059
Std Dev: 0.1880 +/- 0.0064	Std Dev: 0.2796 +/- 0.0029	Std Dev: 0.1940 +/- 0.0042



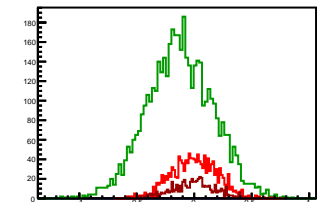
Cycle 4, Diffs

Entries: 1048	Entries: 4600	Entries: 1073
Mean: 0.0017 +/- 0.0062	Mean: -0.1356 +/- 0.0042	Mean: -0.0029 +/- 0.0056
Std Dev: 0.2001 +/- 0.0044	Std Dev: 0.2880 +/- 0.0030	Std Dev: 0.1940 +/- 0.0040



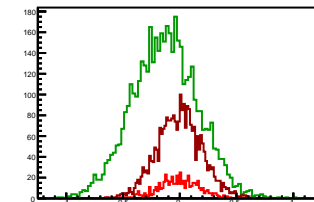
Cycle 5, Diffs

Entries: 1396	Entries: 4653	Entries: 567
Mean: 0.0003 +/- 0.0053	Mean: -0.1244 +/- 0.0042	Mean: -0.0130 +/- 0.0080
Std Dev: 0.1994 +/- 0.0038	Std Dev: 0.2870 +/- 0.0030	Std Dev: 0.1897 +/- 0.0056



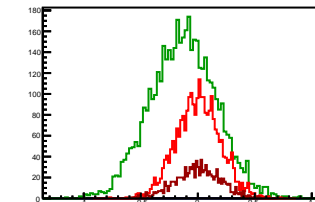
Cycle 6, Diffs

Entries: 567	Entries: 4619	Entries: 2688
Mean: -0.0074 +/- 0.0078	Mean: -0.1304 +/- 0.0042	Mean: -0.0052 +/- 0.0038
Std Dev: 0.1846 +/- 0.0055	Std Dev: 0.2871 +/- 0.0030	Std Dev: 0.1966 +/- 0.0027



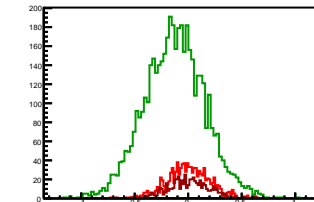
Cycle 7, Diffs

Entries: 2603	Entries: 4634	Entries: 1016
Mean: 0.0037 +/- 0.0038	Mean: -0.1292 +/- 0.0042	Mean: -0.0000 +/- 0.0061
Std Dev: 0.1929 +/- 0.0027	Std Dev: 0.2873 +/- 0.0030	Std Dev: 0.1950 +/- 0.0043



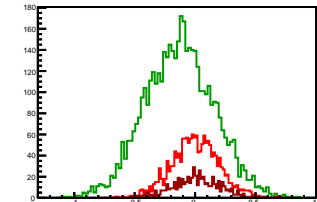
Cycle 8, Diffs

Entries: 1016	Entries: 4667	Entries: 568
Mean: 0.0004 +/- 0.0061	Mean: -0.1271 +/- 0.0041	Mean: 0.0044 +/- 0.0062
Std Dev: 0.1960 +/- 0.0043	Std Dev: 0.2829 +/- 0.0029	Std Dev: 0.1953 +/- 0.0058



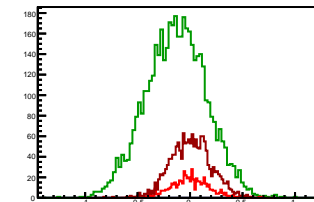
Cycle 9, Diffs

Entries: 1673	Entries: 4579	Entries: 573
Mean: 0.0023 +/- 0.0047	Mean: -0.1306 +/- 0.0042	Mean: 0.0113 +/- 0.0084
Std Dev: 0.1929 +/- 0.0033	Std Dev: 0.2858 +/- 0.0030	Std Dev: 0.2000 +/- 0.0059



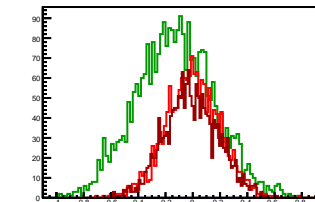
Cycle 10, Diffs

Entries: 580	Entries: 4629	Entries: 1651
Mean: 0.0036 +/- 0.0078	Mean: -0.1319 +/- 0.0042	Mean: 0.0066 +/- 0.0047
Std Dev: 0.1876 +/- 0.0055	Std Dev: 0.2872 +/- 0.0030	Std Dev: 0.1926 +/- 0.0034



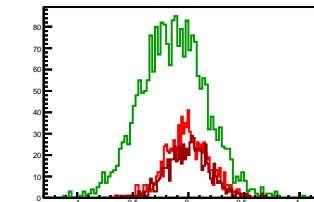
Cycle 11, Diffs

Entries: 1652	Entries: 2970	Entries: 1798
Mean: -0.0033 +/- 0.0049	Mean: -0.1294 +/- 0.0052	Mean: -0.0112 +/- 0.0046
Std Dev: 0.1971 +/- 0.0034	Std Dev: 0.2849 +/- 0.0037	Std Dev: 0.1949 +/- 0.0033



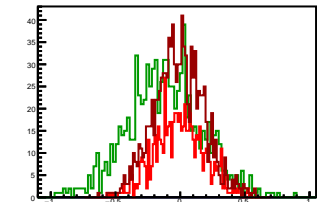
Cycle 12, Diffs

Entries: 1013	Entries: 2342	Entries: 714
Mean: -0.0111 +/- 0.0060	Mean: -0.1338 +/- 0.0060	Mean: 0.0026 +/- 0.0071
Std Dev: 0.1924 +/- 0.0043	Std Dev: 0.2925 +/- 0.0043	Std Dev: 0.1884 +/- 0.0050



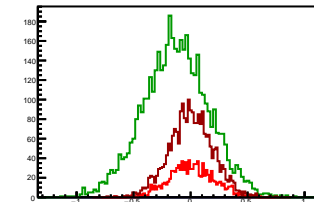
Cycle 13, Diffs

Entries: 654	Entries: 909	Entries: 1085
Mean: -0.0039 +/- 0.0075	Mean: -0.1206 +/- 0.0096	Mean: -0.0121 +/- 0.0059
Std Dev: 0.1924 +/- 0.0053	Std Dev: 0.2881 +/- 0.0068	Std Dev: 0.1943 +/- 0.0042



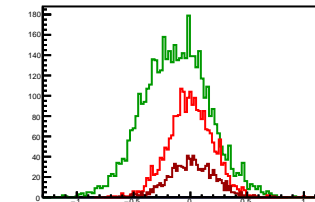
Cycle 14, Diffs

Entries: 1050	Entries: 4615	Entries: 2344
Mean: 0.0069 +/- 0.0061	Mean: -0.1295 +/- 0.0042	Mean: 0.0032 +/- 0.0040
Std Dev: 0.1967 +/- 0.0043	Std Dev: 0.2877 +/- 0.0030	Std Dev: 0.1924 +/- 0.0028



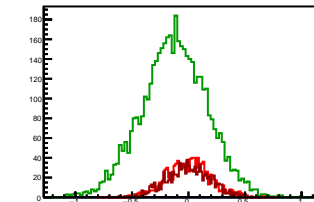
Cycle 15, Diffs

Entries: 2321	Entries: 4604	Entries: 1050
Mean: 0.0011 +/- 0.0041	Mean: -0.1241 +/- 0.0042	Mean: 0.0090 +/- 0.0060
Std Dev: 0.1954 +/- 0.0029	Std Dev: 0.2874 +/- 0.0030	Std Dev: 0.1946 +/- 0.0042



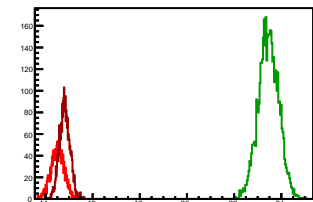
Cycle 16, Diffs

Entries: 1066	Entries: 4641	Entries: 1067
Mean: 0.0024 +/- 0.0060	Mean: -0.1277 +/- 0.0042	Mean: -0.0008 +/- 0.0060
Std Dev: 0.1947 +/- 0.0042	Std Dev: 0.2886 +/- 0.0030	Std Dev: 0.1947 +/- 0.0042



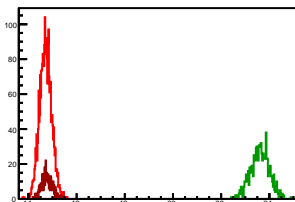
Cycle 1, Sums

Entries: 1688	Entries: 4614	Entries: 2604
Mean: 14.5123 +/- 0.0069	Mean: 23.4582 +/- 0.0063	Mean: 14.8147 +/- 0.0044
Std Dev: 0.2840 +/- 0.0049	Std Dev: 0.4311 +/- 0.0045	Std Dev: 0.2259 +/- 0.0031



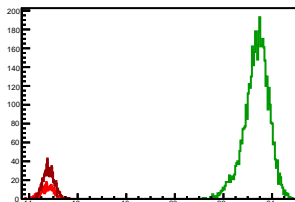
Cycle 2, Sums

Entries: 2556	Entries: 921	Entries: 478
Mean: 14.7130 +/- 0.0050	Mean: 23.6106 +/- 0.0127	Mean: 14.7661 +/- 0.0102
Std Dev: 0.2505 +/- 0.0035	Std Dev: 0.3846 +/- 0.0090	Std Dev: 0.2234 +/- 0.0072



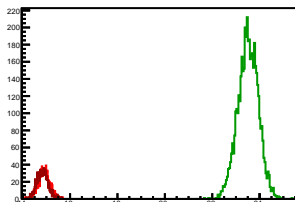
Cycle 3, Sums

Entries: 428	Entries: 4701	Entries: 1090
Mean: 14.7410 +/- 0.0133	Mean: 23.3585 +/- 0.0075	Mean: 14.8172 +/- 0.0070
Std Dev: 0.2742 +/- 0.0094	Std Dev: 0.5157 +/- 0.0053	Std Dev: 0.2319 +/- 0.0050



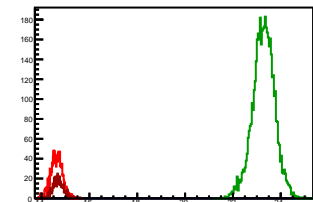
Cycle 4, Sums

Entries: 1048	Entries: 4600	Entries: 1073
Mean: 14.9159 +/- 0.0076	Mean: 23.5115 +/- 0.0064	Mean: 14.8408 +/- 0.0072
Std Dev: 0.2460 +/- 0.0054	Std Dev: 0.4309 +/- 0.0045	Std Dev: 0.2374 +/- 0.0051



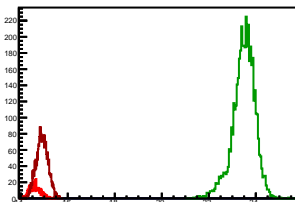
Cycle 5, Sums

Entries: 1396	Entries: 4653	Entries: 567
Mean: 14.6263 +/- 0.0065	Mean: 23.2800 +/- 0.0067	Mean: 14.6823 +/- 0.0091
Std Dev: 0.2437 +/- 0.0046	Std Dev: 0.4589 +/- 0.0048	Std Dev: 0.2173 +/- 0.0065



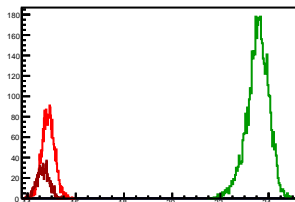
Cycle 6, Sums

Entries: 567	Entries: 4619	Entries: 2688
Mean: 14.6023 +/- 0.0101	Mean: 23.4841 +/- 0.0071	Mean: 14.9072 +/- 0.0048
Std Dev: 0.2400 +/- 0.0071	Std Dev: 0.4794 +/- 0.0050	Std Dev: 0.2502 +/- 0.0034



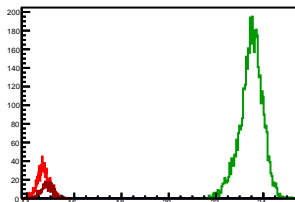
Cycle 7, Sums

Entries: 2603	Entries: 4634	Entries: 1016
Mean: 14.8591 +/- 0.0052	Mean: 23.5452 +/- 0.0068	Mean: 14.6402 +/- 0.0080
Std Dev: 0.2639 +/- 0.0037	Std Dev: 0.4610 +/- 0.0048	Std Dev: 0.2538 +/- 0.0056



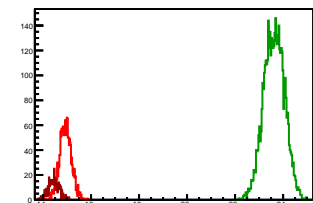
Cycle 8, Sums

Entries: 1016	Entries: 4667	Entries: 568
Mean: 14.6826 +/- 0.0076	Mean: 23.4899 +/- 0.0070	Mean: 14.8641 +/- 0.0100
Std Dev: 0.2422 +/- 0.0054	Std Dev: 0.4809 +/- 0.0050	Std Dev: 0.2392 +/- 0.0071



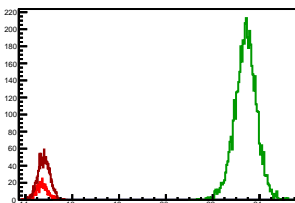
Cycle 9, Sums

Entries: 1673	Entries: 4579	Entries: 573
Mean: 14.9348 +/- 0.0060	Mean: 23.6246 +/- 0.0063	Mean: 14.4495 +/- 0.0095
Std Dev: 0.2469 +/- 0.0043	Std Dev: 0.4290 +/- 0.0045	Std Dev: 0.2272 +/- 0.0067



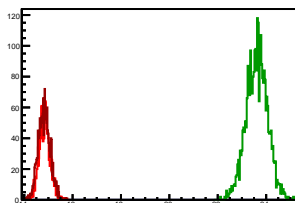
Cycle 10, Sums

Entries: 580	Entries: 4629	Entries: 1651
Mean: 14.6973 +/- 0.0102	Mean: 23.4044 +/- 0.0069	Mean: 14.7919 +/- 0.0062
Std Dev: 0.2454 +/- 0.0072	Std Dev: 0.4729 +/- 0.0049	Std Dev: 0.2527 +/- 0.0044



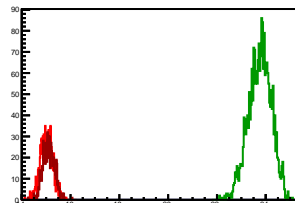
Cycle 11, Sums

Entries: 1652	Entries: 2970	Entries: 1798
Mean: 14.8454 +/- 0.0056	Mean: 23.6152 +/- 0.0081	Mean: 14.8258 +/- 0.0058
Std Dev: 0.2284 +/- 0.0040	Std Dev: 0.4417 +/- 0.0057	Std Dev: 0.2446 +/- 0.0041



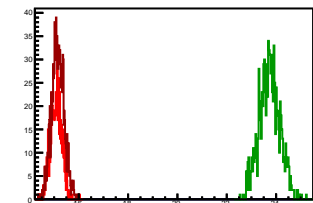
Cycle 12, Sums

Entries: 1013	Entries: 2342	Entries: 714
Mean: 15.0177 +/- 0.0080	Mean: 23.7585 +/- 0.0097	Mean: 15.1126 +/- 0.0088
Std Dev: 0.2551 +/- 0.0057	Std Dev: 0.4680 +/- 0.0068	Std Dev: 0.2350 +/- 0.0062



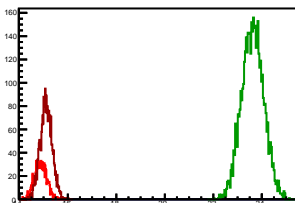
Cycle 13, Sums

Entries: 654	Entries: 909	Entries: 1085
Mean: 15.0780 +/- 0.0090	Mean: 23.7376 +/- 0.0140	Mean: 15.1497 +/- 0.0077
Std Dev: 0.2297 +/- 0.0064	Std Dev: 0.4221 +/- 0.0099	Std Dev: 0.2527 +/- 0.0054



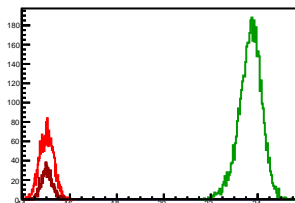
Cycle 14, Sums

Entries: 1050	Entries: 4615	Entries: 2344
Mean: 14.8805 +/- 0.0076	Mean: 23.6218 +/- 0.0067	Mean: 15.1031 +/- 0.0051
Std Dev: 0.2451 +/- 0.0053	Std Dev: 0.4548 +/- 0.0047	Std Dev: 0.2476 +/- 0.0036



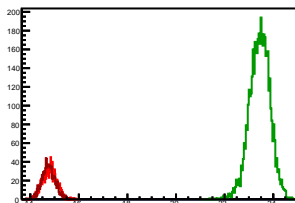
Cycle 15, Sums

Entries: 2321	Entries: 4604	Entries: 1050
Mean: 15.0103 +/- 0.0062	Mean: 23.6831 +/- 0.0071	Mean: 15.0118 +/- 0.0072
Std Dev: 0.2979 +/- 0.0044	Std Dev: 0.4838 +/- 0.0050	Std Dev: 0.2338 +/- 0.0051



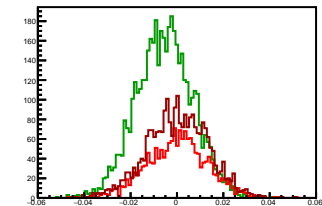
Cycle 16, Sums

Entries: 1066	Entries: 4641	Entries: 1067
Mean: 14.7948 +/- 0.0089	Mean: 23.4414 +/- 0.0062	Mean: 14.7578 +/- 0.0085
Std Dev: 0.2898 +/- 0.0063	Std Dev: 0.4252 +/- 0.0044	Std Dev: 0.2768 +/- 0.0060



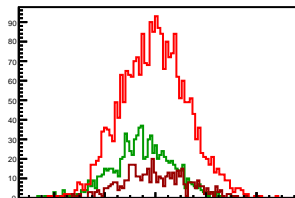
Cycle 1, Asyms

Entries: 1688	Entries: 4614	Entries: 2604
Mean: 0.0001 +/- 0.0003	Mean: -0.0054 +/- 0.0002	Mean: 0.0001 +/- 0.0003
Std Dev: 0.0130 +/- 0.0002	Std Dev: 0.0122 +/- 0.0001	Std Dev: 0.0131 +/- 0.0002



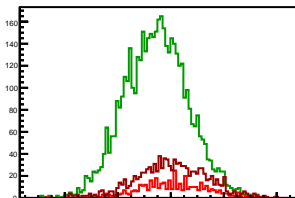
Cycle 2, Asyms

Entries: 2556	Entries: 921	Entries: 478
Mean: -0.0003 +/- 0.0003	Mean: -0.0051 +/- 0.0004	Mean: 0.0001 +/- 0.0006
Std Dev: 0.0130 +/- 0.0002	Std Dev: 0.0121 +/- 0.0003	Std Dev: 0.0130 +/- 0.0004



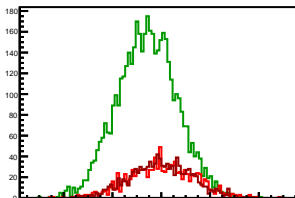
Cycle 3, Asyms

Entries: 428	Entries: 4701	Entries: 1090
Mean: 0.0007 +/- 0.0006	Mean: -0.0055 +/- 0.0002	Mean: 0.0002 +/- 0.0004
Std Dev: 0.0127 +/- 0.0004	Std Dev: 0.0120 +/- 0.0001	Std Dev: 0.0131 +/- 0.0003



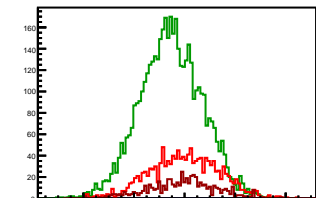
Cycle 4, Asyms

Entries: 1048	Entries: 4600	Entries: 1073
Mean: 0.0001 +/- 0.0004	Mean: -0.0058 +/- 0.0002	Mean: -0.0002 +/- 0.0004
Std Dev: 0.0134 +/- 0.0003	Std Dev: 0.0123 +/- 0.0001	Std Dev: 0.0124 +/- 0.0003



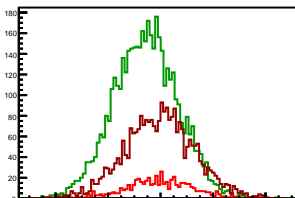
Cycle 5, Asyms

Entries: 1396	Entries: 4653	Entries: 567
Mean: 0.0000 +/- 0.0004	Mean: -0.0053 +/- 0.0002	Mean: -0.0009 +/- 0.0005
Std Dev: 0.0136 +/- 0.0003	Std Dev: 0.0123 +/- 0.0001	Std Dev: 0.0129 +/- 0.0004



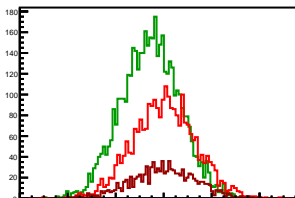
Cycle 6, Asyms

Entries: 567	Entries: 4619	Entries: 2688
Mean: -0.0005 +/- 0.0005	Mean: -0.0055 +/- 0.0002	Mean: -0.0003 +/- 0.0003
Std Dev: 0.0126 +/- 0.0004	Std Dev: 0.0122 +/- 0.0001	Std Dev: 0.0132 +/- 0.0002



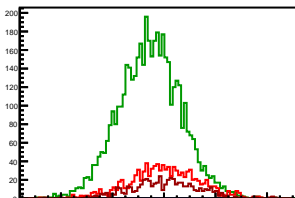
Cycle 7, Asyms

Entries: 2603	Entries: 4634	Entries: 1016
Mean: 0.0002 +/- 0.0003	Mean: -0.0055 +/- 0.0002	Mean: -0.0000 +/- 0.0004
Std Dev: 0.0130 +/- 0.0002	Std Dev: 0.0122 +/- 0.0001	Std Dev: 0.0133 +/- 0.0004



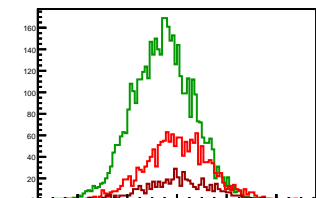
Cycle 8, Asyms

Entries: 1016	Entries: 4667	Entries: 568
Mean: 0.0000 +/- 0.0004	Mean: -0.0054 +/- 0.0002	Mean: 0.0003 +/- 0.0006
Std Dev: 0.0133 +/- 0.0003	Std Dev: 0.0121 +/- 0.0001	Std Dev: 0.0131 +/- 0.0004



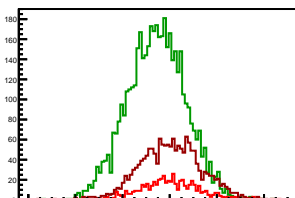
Cycle 9, Asyms

Entries: 1673	Entries: 4579	Entries: 573
Mean: 0.0001 +/- 0.0003	Mean: -0.0055 +/- 0.0002	Mean: 0.0008 +/- 0.0006
Std Dev: 0.0129 +/- 0.0002	Std Dev: 0.0121 +/- 0.0001	Std Dev: 0.0138 +/- 0.0004



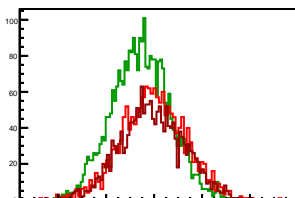
Cycle 10, Asyms

Entries: 580	Entries: 4629	Entries: 1651
Mean: 0.0002 +/- 0.0005	Mean: -0.0056 +/- 0.0002	Mean: 0.0004 +/- 0.0003
Std Dev: 0.0127 +/- 0.0004	Std Dev: 0.0123 +/- 0.0001	Std Dev: 0.0130 +/- 0.0002



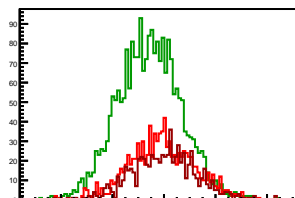
Cycle 11, Asyms

Entries: 1652	Entries: 2970	Entries: 1798
Mean: -0.0002 +/- 0.0003	Mean: -0.0055 +/- 0.0002	Mean: -0.0008 +/- 0.0003
Std Dev: 0.0133 +/- 0.0002	Std Dev: 0.0121 +/- 0.0002	Std Dev: 0.0131 +/- 0.0002



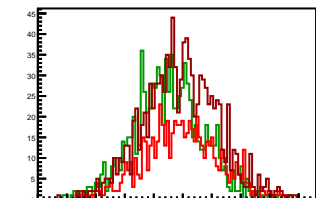
Cycle 12, Asyms

Entries: 1013	Entries: 2342	Entries: 714
Mean: -0.0007 +/- 0.0004	Mean: -0.0056 +/- 0.0003	Mean: 0.0002 +/- 0.0005
Std Dev: 0.0128 +/- 0.0003	Std Dev: 0.0123 +/- 0.0002	Std Dev: 0.0124 +/- 0.0003



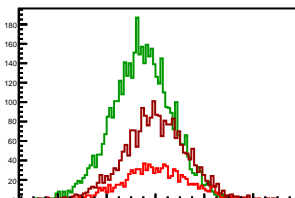
Cycle 13, Asyms

Entries: 654	Entries: 909	Entries: 1085
Mean: -0.0003 +/- 0.0005	Mean: -0.0051 +/- 0.0004	Mean: -0.0008 +/- 0.0004
Std Dev: 0.0127 +/- 0.0004	Std Dev: 0.0121 +/- 0.0003	Std Dev: 0.0128 +/- 0.0003



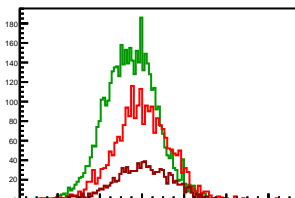
Cycle 14, Asyms

Entries: 1050	Entries: 4615	Entries: 2344
Mean: 0.0005 +/- 0.0004	Mean: -0.0055 +/- 0.0002	Mean: 0.0002 +/- 0.0003
Std Dev: 0.0132 +/- 0.0003	Std Dev: 0.0122 +/- 0.0001	Std Dev: 0.0127 +/- 0.0002



Cycle 15, Asyms

Entries: 2321	Entries: 4604	Entries: 1050
Mean: 0.0001 +/- 0.0003	Mean: -0.0052 +/- 0.0002	Mean: 0.0006 +/- 0.0004
Std Dev: 0.0130 +/- 0.0002	Std Dev: 0.0121 +/- 0.0001	Std Dev: 0.0129 +/- 0.0003



Cycle 16, Asyms

Entries: 1066	Entries: 4641	Entries: 1067
Mean: 0.0002 +/- 0.0004	Mean: -0.0054 +/- 0.0002	Mean: -0.0000 +/- 0.0004
Std Dev: 0.0131 +/- 0.0003	Std Dev: 0.0123 +/- 0.0001	Std Dev: 0.0132 +/- 0.0003

