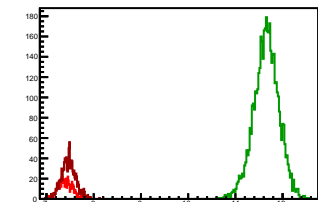


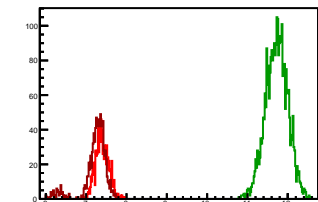
### Cycle 1, PosHel

Entries: 608	Entries: 4548	Entries: 1044
Mean: 7.4024 +/- 0.0060	Mean: 11.6526 +/- 0.0040	Mean: 7.4683 +/- 0.0047
Std Dev: 0.1470 +/- 0.0042	Std Dev: 0.2672 +/- 0.0028	Std Dev: 0.1533 +/- 0.0034



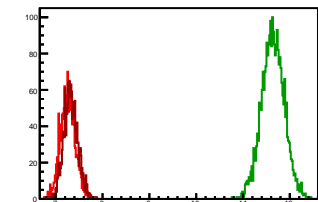
### Cycle 2, PosHel

Entries: 1033	Entries: 3091	Entries: 956
Mean: 7.3931 +/- 0.0051	Mean: 11.7228 +/- 0.0050	Mean: 7.2272 +/- 0.0099
Std Dev: 0.1641 +/- 0.0036	Std Dev: 0.2762 +/- 0.0035	Std Dev: 0.3058 +/- 0.0070



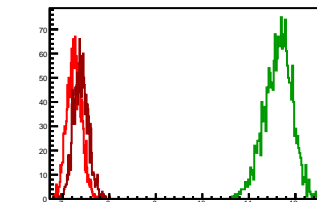
### Cycle 3, PosHel

Entries: 1765	Entries: 2744	Entries: 1808
Mean: 7.2611 +/- 0.0038	Mean: 11.6367 +/- 0.0046	Mean: 7.3230 +/- 0.0035
Std Dev: 0.1581 +/- 0.0027	Std Dev: 0.2419 +/- 0.0033	Std Dev: 0.1480 +/- 0.0025



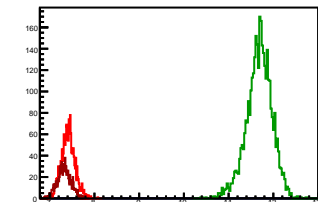
### Cycle 4, PosHel

Entries: 1833	Entries: 2174	Entries: 1655
Mean: 7.2495 +/- 0.0036	Mean: 11.6296 +/- 0.0064	Mean: 7.3910 +/- 0.0039
Std Dev: 0.1560 +/- 0.0026	Std Dev: 0.2968 +/- 0.0045	Std Dev: 0.1581 +/- 0.0027



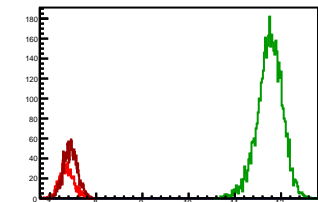
### Cycle 5, PosHel

Entries: 1639	Entries: 3491	Entries: 1002
Mean: 7.4121 +/- 0.0037	Mean: 11.6806 +/- 0.0049	Mean: 7.3233 +/- 0.0048
Std Dev: 0.1515 +/- 0.0026	Std Dev: 0.2881 +/- 0.0034	Std Dev: 0.1520 +/- 0.0034



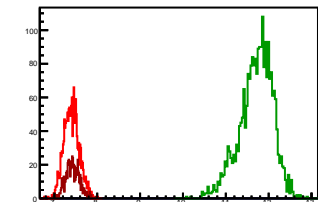
### Cycle 6, PosHel

Entries: 1004	Entries: 4672	Entries: 1716
Mean: 7.3632 +/- 0.0050	Mean: 11.7549 +/- 0.0040	Mean: 7.4419 +/- 0.0036
Std Dev: 0.1597 +/- 0.0036	Std Dev: 0.2759 +/- 0.0029	Std Dev: 0.1497 +/- 0.0026



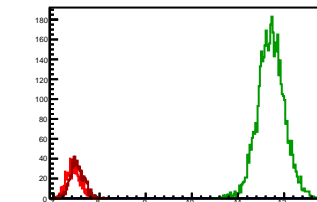
### Cycle 7, PosHel

Entries: 1670	Entries: 2452	Entries: 696
Mean: 7.3977 +/- 0.0043	Mean: 11.7067 +/- 0.0079	Mean: 7.4277 +/- 0.0060
Std Dev: 0.1763 +/- 0.0031	Std Dev: 0.3889 +/- 0.0056	Std Dev: 0.1595 +/- 0.0043



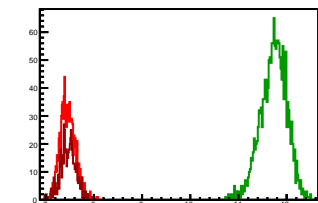
### Cycle 8, PosHel

Entries: 1198	Entries: 4695	Entries: 1056
Mean: 7.4373 +/- 0.0043	Mean: 11.7185 +/- 0.0042	Mean: 7.5150 +/- 0.0046
Std Dev: 0.1493 +/- 0.0031	Std Dev: 0.2911 +/- 0.0030	Std Dev: 0.1504 +/- 0.0033



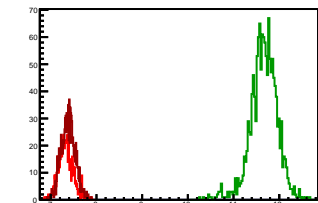
### Cycle 9, PosHel

Entries: 1035	Entries: 1811	Entries: 669
Mean: 7.4538 +/- 0.0050	Mean: 11.7279 +/- 0.0064	Mean: 7.4704 +/- 0.0059
Std Dev: 0.1602 +/- 0.0035	Std Dev: 0.2729 +/- 0.0045	Std Dev: 0.1525 +/- 0.0042



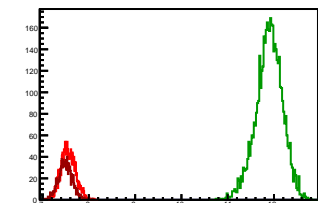
### Cycle 10, PosHel

Entries: 640	Entries: 1413	Entries: 1026
Mean: 7.3285 +/- 0.0062	Mean: 11.6618 +/- 0.0080	Mean: 7.3792 +/- 0.0048
Std Dev: 0.1556 +/- 0.0043	Std Dev: 0.3020 +/- 0.0057	Std Dev: 0.1522 +/- 0.0034



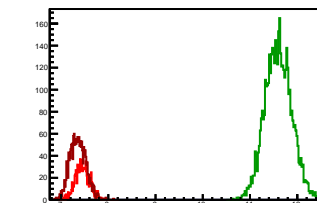
### Cycle 11, PosHel

Entries: 1670	Entries: 4644	Entries: 1024
Mean: 7.5544 +/- 0.0038	Mean: 11.8950 +/- 0.0042	Mean: 7.4912 +/- 0.0047
Std Dev: 0.1556 +/- 0.0027	Std Dev: 0.2867 +/- 0.0030	Std Dev: 0.1513 +/- 0.0033



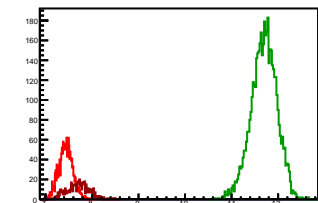
### Cycle 12, PosHel

Entries: 1022	Entries: 4657	Entries: 1688
Mean: 7.4555 +/- 0.0048	Mean: 11.5988 +/- 0.0041	Mean: 7.3606 +/- 0.0042
Std Dev: 0.1542 +/- 0.0034	Std Dev: 0.2802 +/- 0.0029	Std Dev: 0.1710 +/- 0.0029



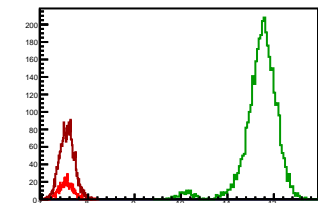
### Cycle 13, PosHel

Entries: 1654	Entries: 4668	Entries: 563
Mean: 7.4355 +/- 0.0037	Mean: 11.6964 +/- 0.0040	Mean: 7.7055 +/- 0.0099
Std Dev: 0.1506 +/- 0.0026	Std Dev: 0.2758 +/- 0.0029	Std Dev: 0.2343 +/- 0.0070



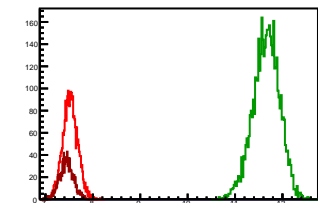
### Cycle 14, PosHel

Entries: 566	Entries: 3790	Entries: 2676
Mean: 7.5255 +/- 0.0062	Mean: 11.7136 +/- 0.0062	Mean: 7.5476 +/- 0.0030
Std Dev: 0.1481 +/- 0.0044	Std Dev: 0.3847 +/- 0.0044	Std Dev: 0.1567 +/- 0.0021



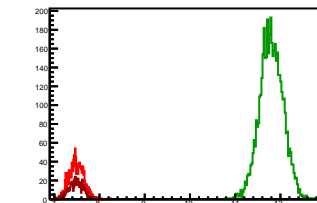
### Cycle 15, PosHel

Entries: 2591	Entries: 4670	Entries: 1023
Mean: 7.5233 +/- 0.0031	Mean: 11.6575 +/- 0.0041	Mean: 7.4442 +/- 0.0046
Std Dev: 0.1588 +/- 0.0022	Std Dev: 0.2803 +/- 0.0029	Std Dev: 0.1473 +/- 0.0033



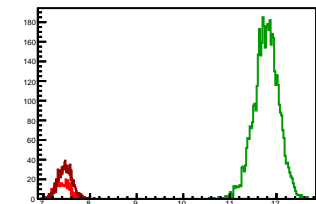
### Cycle 16, PosHel

Entries: 1341	Entries: 4609	Entries: 558
Mean: 7.4870 +/- 0.0045	Mean: 11.7995 +/- 0.0038	Mean: 7.4872 +/- 0.0067
Std Dev: 0.1639 +/- 0.0032	Std Dev: 0.2611 +/- 0.0027	Std Dev: 0.1581 +/- 0.0047



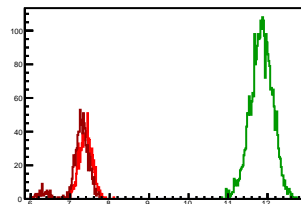
### Cycle 1, NegHel

Entries: 608	Entries: 4548	Entries: 1044
Mean: 7.4066 +/- 0.0063	Mean: 11.7796 +/- 0.0040	Mean: 7.4719 +/- 0.0047
Std Dev: 0.1547 +/- 0.0044	Std Dev: 0.2667 +/- 0.0028	Std Dev: 0.1519 +/- 0.0033



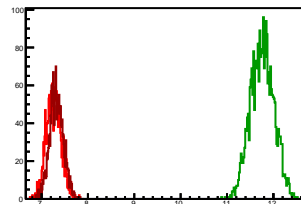
### Cycle 2, NegHel

Entries: 1033	Entries: 3091	Entries: 956
Mean: 7.3931 +/- 0.0052	Mean: 11.8459 +/- 0.0051	Mean: 7.2301 +/- 0.0099
Std Dev: 0.1669 +/- 0.0037	Std Dev: 0.2819 +/- 0.0036	Std Dev: 0.3051 +/- 0.0070



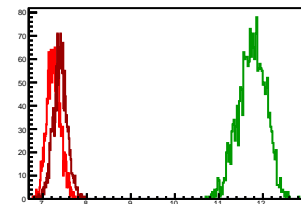
### Cycle 3, NegHel

Entries: 1765	Entries: 2744	Entries: 1808
Mean: 7.2652 +/- 0.0038	Mean: 11.7578 +/- 0.0048	Mean: 7.3220 +/- 0.0035
Std Dev: 0.1582 +/- 0.0027	Std Dev: 0.2532 +/- 0.0034	Std Dev: 0.1493 +/- 0.0025



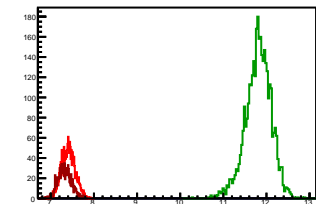
### Cycle 4, NegHel

Entries: 1833	Entries: 2174	Entries: 1655
Mean: 7.2505 +/- 0.0037	Mean: 11.7525 +/- 0.0067	Mean: 7.3955 +/- 0.0039
Std Dev: 0.1566 +/- 0.0028	Std Dev: 0.3123 +/- 0.0047	Std Dev: 0.1601 +/- 0.0028



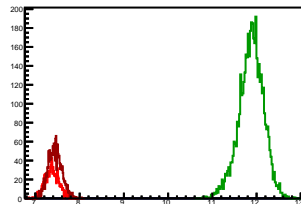
### Cycle 5, NegHel

Entries: 1639	Entries: 3491	Entries: 1002
Mean: 7.4046 +/- 0.0039	Mean: 11.8108 +/- 0.0051	Mean: 7.3205 +/- 0.0049
Std Dev: 0.1566 +/- 0.0027	Std Dev: 0.2988 +/- 0.0036	Std Dev: 0.1558 +/- 0.0035



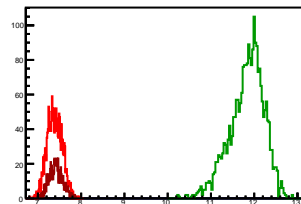
### Cycle 6, NegHel

Entries: 1004	Entries: 4672	Entries: 1716
Mean: 7.3699 +/- 0.0049	Mean: 11.8763 +/- 0.0041	Mean: 7.4416 +/- 0.0037
Std Dev: 0.1552 +/- 0.0035	Std Dev: 0.2817 +/- 0.0029	Std Dev: 0.1532 +/- 0.0026



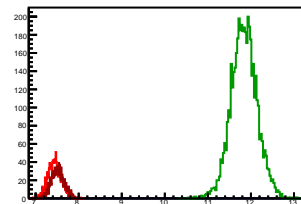
### Cycle 7, NegHel

Entries: 1670	Entries: 2452	Entries: 696
Mean: 7.3902 +/- 0.0043	Mean: 11.8307 +/- 0.0080	Mean: 7.4167 +/- 0.0060
Std Dev: 0.1750 +/- 0.0030	Std Dev: 0.3947 +/- 0.0056	Std Dev: 0.1577 +/- 0.0042



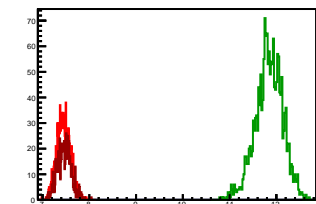
### Cycle 8, NegHel

Entries: 1198	Entries: 4695	Entries: 1056
Mean: 7.4415 +/- 0.0045	Mean: 11.8389 +/- 0.0044	Mean: 7.5135 +/- 0.0047
Std Dev: 0.1546 +/- 0.0032	Std Dev: 0.3015 +/- 0.0031	Std Dev: 0.1511 +/- 0.0033



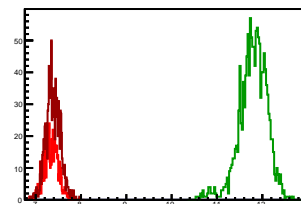
### Cycle 9, NegHel

Entries: 1035	Entries: 1811	Entries: 669
Mean: 7.4483 +/- 0.0045	Mean: 11.8423 +/- 0.0069	Mean: 7.4676 +/- 0.0058
Std Dev: 0.1456 +/- 0.0032	Std Dev: 0.2929 +/- 0.0049	Std Dev: 0.1497 +/- 0.0041



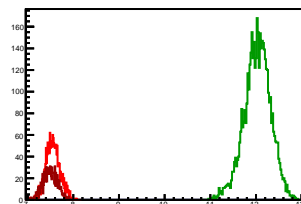
### Cycle 10, NegHel

Entries: 640	Entries: 1413	Entries: 1026
Mean: 7.3378 +/- 0.0063	Mean: 11.7965 +/- 0.0083	Mean: 7.3844 +/- 0.0050
Std Dev: 0.1582 +/- 0.0044	Std Dev: 0.3114 +/- 0.0059	Std Dev: 0.1596 +/- 0.0035



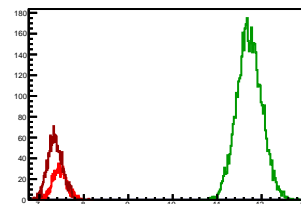
### Cycle 11, NegHel

Entries: 1670	Entries: 4644	Entries: 1024
Mean: 7.5536 +/- 0.0038	Mean: 12.0286 +/- 0.0043	Mean: 7.4951 +/- 0.0048
Std Dev: 0.1542 +/- 0.0027	Std Dev: 0.2922 +/- 0.0030	Std Dev: 0.1537 +/- 0.0034



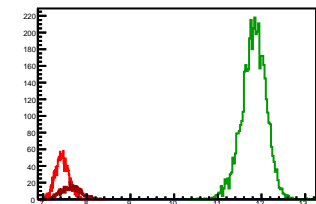
### Cycle 12, NegHel

Entries: 1022	Entries: 4657	Entries: 1688
Mean: 7.4578 +/- 0.0050	Mean: 11.7253 +/- 0.0041	Mean: 7.3537 +/- 0.0041
Std Dev: 0.1594 +/- 0.0035	Std Dev: 0.2806 +/- 0.0029	Std Dev: 0.1698 +/- 0.0029



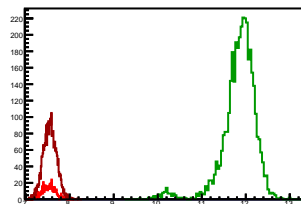
### Cycle 13, NegHel

Entries: 1654	Entries: 4668	Entries: 563
Mean: 7.4344 +/- 0.0039	Mean: 11.8256 +/- 0.0041	Mean: 7.6509 +/- 0.0092
Std Dev: 0.1569 +/- 0.0027	Std Dev: 0.2801 +/- 0.0029	Std Dev: 0.2173 +/- 0.0065



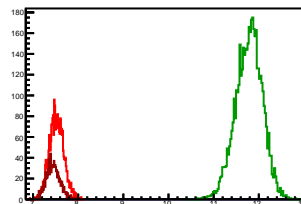
### Cycle 14, NegHel

Entries: 566	Entries: 3790	Entries: 2676
Mean: 7.5262 +/- 0.0065	Mean: 11.8406 +/- 0.0065	Mean: 7.5494 +/- 0.0030
Std Dev: 0.1551 +/- 0.0046	Std Dev: 0.3983 +/- 0.0046	Std Dev: 0.1531 +/- 0.0021



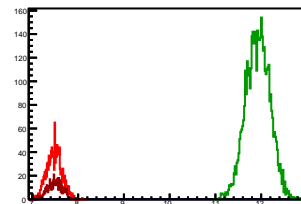
### Cycle 15, NegHel

Entries: 2591	Entries: 4670	Entries: 1023
Mean: 7.5215 +/- 0.0031	Mean: 11.7820 +/- 0.0043	Mean: 7.4422 +/- 0.0047
Std Dev: 0.1593 +/- 0.0022	Std Dev: 0.2947 +/- 0.0030	Std Dev: 0.1501 +/- 0.0033



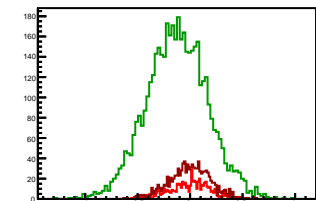
### Cycle 16, NegHel

Entries: 1341	Entries: 4609	Entries: 558
Mean: 7.4819 +/- 0.0045	Mean: 11.9268 +/- 0.0039	Mean: 7.4939 +/- 0.0067
Std Dev: 0.1655 +/- 0.0032	Std Dev: 0.2627 +/- 0.0027	Std Dev: 0.1588 +/- 0.0048



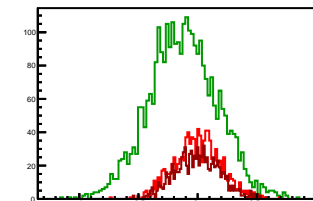
### Cycle 1, Diffs

Entries: 608	Entries: 4548	Entries: 1044
Mean: -0.0042 +/- 0.0078	Mean: -0.1271 +/- 0.0043	Mean: -0.0036 +/- 0.0061
Std Dev: 0.1922 +/- 0.0055	Std Dev: 0.2913 +/- 0.0031	Std Dev: 0.1961 +/- 0.0043



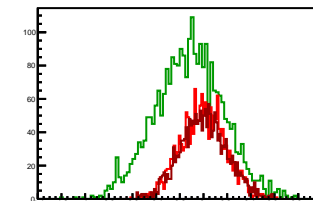
### Cycle 2, Diffs

Entries: 1033	Entries: 3091	Entries: 956
Mean: -0.0000 +/- 0.0060	Mean: -0.1231 +/- 0.0052	Mean: -0.0029 +/- 0.0061
Std Dev: 0.1930 +/- 0.0042	Std Dev: 0.2870 +/- 0.0036	Std Dev: 0.1894 +/- 0.0043



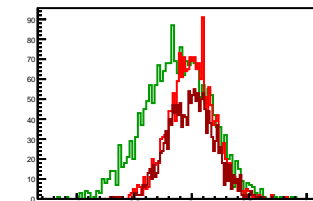
### Cycle 3, Diffs

Entries: 1765	Entries: 2744	Entries: 1808
Mean: -0.0041 +/- 0.0045	Mean: -0.1211 +/- 0.0055	Mean: 0.0010 +/- 0.0046
Std Dev: 0.1886 +/- 0.0032	Std Dev: 0.2878 +/- 0.0030	Std Dev: 0.1951 +/- 0.0032



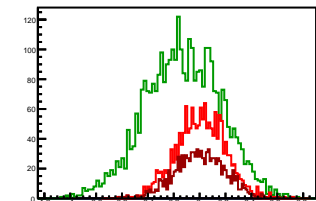
### Cycle 4, Diffs

Entries: 1833	Entries: 2174	Entries: 1655
Mean: -0.0009 +/- 0.0045	Mean: -0.1229 +/- 0.0062	Mean: -0.0045 +/- 0.0049
Std Dev: 0.1929 +/- 0.0032	Std Dev: 0.2885 +/- 0.0044	Std Dev: 0.1976 +/- 0.0034



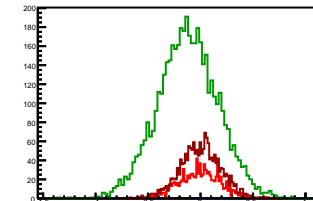
### Cycle 5, Diffs

Entries: 1639	Entries: 3491	Entries: 1002
Mean: 0.0075 +/- 0.0047	Mean: -0.1301 +/- 0.0049	Mean: 0.0027 +/- 0.0060
Std Dev: 0.1905 +/- 0.0033	Std Dev: 0.2908 +/- 0.0035	Std Dev: 0.1888 +/- 0.0042



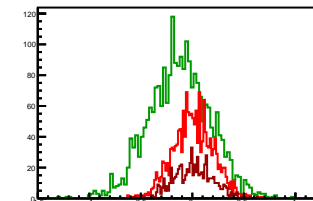
### Cycle 6, Diffs

Entries: 1004	Entries: 4672	Entries: 1716
Mean: -0.0067 +/- 0.0061	Mean: -0.1214 +/- 0.0042	Mean: 0.0003 +/- 0.0046
Std Dev: 0.1926 +/- 0.0043	Std Dev: 0.2859 +/- 0.0030	Std Dev: 0.1922 +/- 0.0033



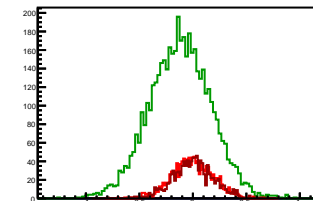
### Cycle 7, Diffs

Entries: 1670	Entries: 2452	Entries: 696
Mean: 0.0075 +/- 0.0047	Mean: -0.1239 +/- 0.0060	Mean: 0.0110 +/- 0.0071
Std Dev: 0.1934 +/- 0.0033	Std Dev: 0.2974 +/- 0.0042	Std Dev: 0.1862 +/- 0.0050



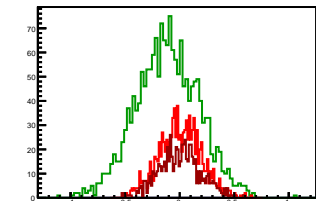
### Cycle 8, Diffs

Entries: 1198	Entries: 4695	Entries: 1056
Mean: -0.0042 +/- 0.0055	Mean: -0.1204 +/- 0.0042	Mean: 0.0015 +/- 0.0058
Std Dev: 0.1911 +/- 0.0039	Std Dev: 0.2867 +/- 0.0030	Std Dev: 0.1893 +/- 0.0041



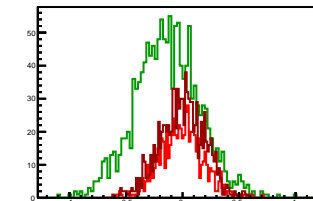
### Cycle 9, Diffs

Entries: 1035	Entries: 1811	Entries: 669
Mean: 0.0055 +/- 0.0061	Mean: -0.1144 +/- 0.0068	Mean: 0.0028 +/- 0.0072
Std Dev: 0.1949 +/- 0.0043	Std Dev: 0.2884 +/- 0.0048	Std Dev: 0.1874 +/- 0.0051



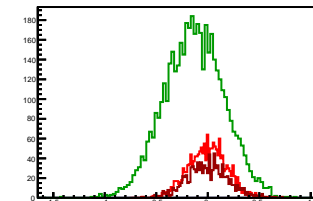
### Cycle 10, Diffs

Entries: 640	Entries: 1413	Entries: 1026
Mean: -0.0093 +/- 0.0076	Mean: -0.1347 +/- 0.0075	Mean: -0.0052 +/- 0.0061
Std Dev: 0.1921 +/- 0.0054	Std Dev: 0.2858 +/- 0.0054	Std Dev: 0.1963 +/- 0.0043



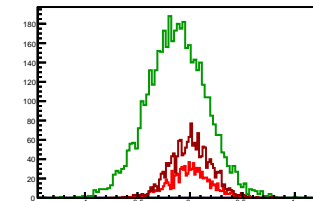
### Cycle 11, Diffs

Entries: 1670	Entries: 4644	Entries: 1024
Mean: 0.0008 +/- 0.0045	Mean: -0.1337 +/- 0.0042	Mean: -0.0039 +/- 0.0063
Std Dev: 0.1851 +/- 0.0032	Std Dev: 0.2885 +/- 0.0030	Std Dev: 0.2014 +/- 0.0045



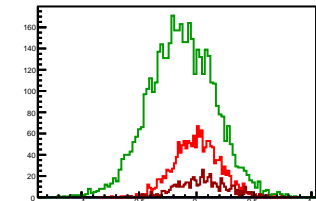
### Cycle 12, Diffs

Entries: 1022	Entries: 4657	Entries: 1688
Mean: -0.0024 +/- 0.0060	Mean: -0.1264 +/- 0.0042	Mean: 0.0068 +/- 0.0047
Std Dev: 0.1915 +/- 0.0042	Std Dev: 0.2834 +/- 0.0029	Std Dev: 0.1913 +/- 0.0033



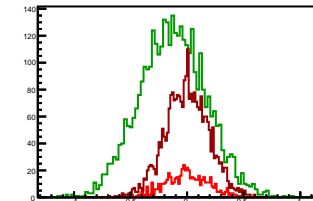
### Cycle 13, Diffs

Entries: 1654	Entries: 4668	Entries: 563
Mean: 0.0011 +/- 0.0048	Mean: -0.1292 +/- 0.0042	Mean: 0.0545 +/- 0.0093
Std Dev: 0.1956 +/- 0.0034	Std Dev: 0.2861 +/- 0.0030	Std Dev: 0.2197 +/- 0.0065



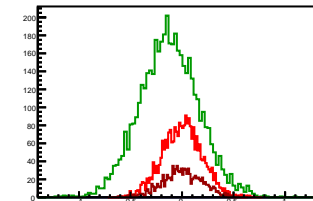
### Cycle 14, Diffs

Entries: 566	Entries: 3790	Entries: 2676
Mean: -0.0008 +/- 0.0081	Mean: -0.1270 +/- 0.0047	Mean: -0.0019 +/- 0.0037
Std Dev: 0.1933 +/- 0.0057	Std Dev: 0.2905 +/- 0.0033	Std Dev: 0.1915 +/- 0.0026



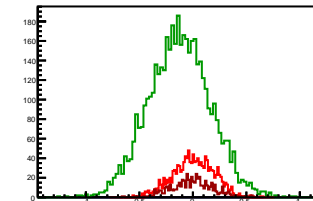
### Cycle 15, Diffs

Entries: 2591	Entries: 4670	Entries: 1023
Mean: 0.0018 +/- 0.0038	Mean: -0.1245 +/- 0.0042	Mean: 0.0020 +/- 0.0059
Std Dev: 0.1937 +/- 0.0027	Std Dev: 0.2868 +/- 0.0030	Std Dev: 0.1891 +/- 0.0042



### Cycle 16, Diffs

Entries: 1341	Entries: 4609	Entries: 558
Mean: 0.0051 +/- 0.0052	Mean: -0.1273 +/- 0.0042	Mean: -0.0067 +/- 0.0082
Std Dev: 0.1915 +/- 0.0037	Std Dev: 0.2873 +/- 0.0030	Std Dev: 0.1944 +/- 0.0058

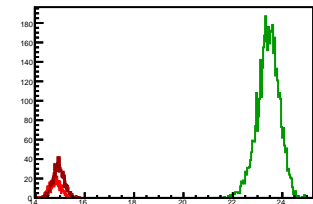


### Cycle 1, Sums

Entries: 608      Entries: 4548      Entries: 1044

Mean: 14.8089 +/- 0.0094      Mean: 23.4322 +/- 0.0066      Mean: 14.9402 +/- 0.0072

Std Dev: 0.2327 +/- 0.0067      Std Dev: 0.4474 +/- 0.0047      Std Dev: 0.2338 +/- 0.0051

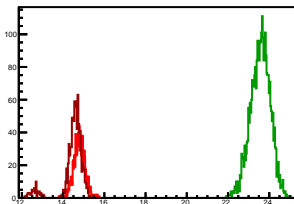


### Cycle 2, Sums

Entries: 1033      Entries: 3091      Entries: 956

Mean: 14.7862 +/- 0.0084      Mean: 23.5686 +/- 0.0086      Mean: 14.4572 +/- 0.0188

Std Dev: 0.2689 +/- 0.0059      Std Dev: 0.4786 +/- 0.0061      Std Dev: 0.5808 +/- 0.0133

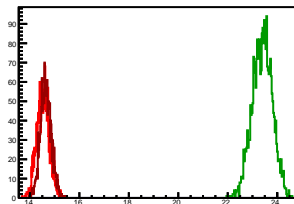


### Cycle 3, Sums

Entries: 1765      Entries: 2744      Entries: 1808

Mean: 14.5263 +/- 0.0060      Mean: 23.3945 +/- 0.0077      Mean: 14.6449 +/- 0.0053

Std Dev: 0.2538 +/- 0.0043      Std Dev: 0.4030 +/- 0.0054      Std Dev: 0.2243 +/- 0.0037

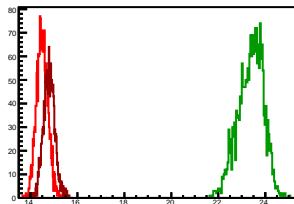


### Cycle 4, Sums

Entries: 1833      Entries: 2174      Entries: 1655

Mean: 14.5000 +/- 0.0057      Mean: 23.3821 +/- 0.0115      Mean: 14.7865 +/- 0.0061

Std Dev: 0.2460 +/- 0.0041      Std Dev: 0.5366 +/- 0.0081      Std Dev: 0.2495 +/- 0.0043

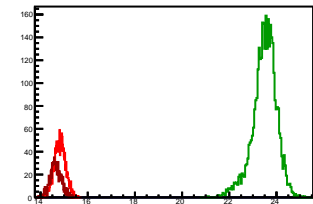


### Cycle 5, Sums

Entries: 1639      Entries: 3491      Entries: 1002

Mean: 14.8167 +/- 0.0060      Mean: 23.4916 +/- 0.0086      Mean: 14.6438 +/- 0.0077

Std Dev: 0.2421 +/- 0.0042      Std Dev: 0.5099 +/- 0.0061      Std Dev: 0.2430 +/- 0.0054

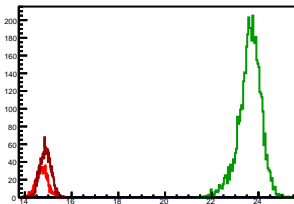


### Cycle 6, Sums

Entries: 1004      Entries: 4672      Entries: 1716

Mean: 14.7332 +/- 0.0079      Mean: 23.6312 +/- 0.0070      Mean: 14.8835 +/- 0.0057

Std Dev: 0.2491 +/- 0.0056      Std Dev: 0.4787 +/- 0.0050      Std Dev: 0.2342 +/- 0.0040

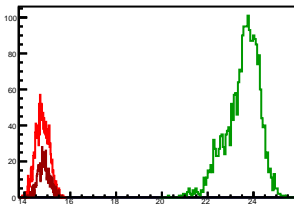


### Cycle 7, Sums

Entries: 1670      Entries: 2452      Entries: 696

Mean: 14.7978 +/- 0.0072      Mean: 23.5374 +/- 0.0146      Mean: 14.8444 +/- 0.0097

Std Dev: 0.2934 +/- 0.0051      Std Dev: 0.7250 +/- 0.0104      Std Dev: 0.2568 +/- 0.0069

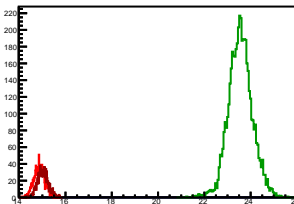


### Cycle 8, Sums

Entries: 1198      Entries: 4695      Entries: 1056

Mean: 14.8788 +/- 0.0068      Mean: 23.5575 +/- 0.0076      Mean: 15.0285 +/- 0.0072

Std Dev: 0.2364 +/- 0.0048      Std Dev: 0.5188 +/- 0.0054      Std Dev: 0.2346 +/- 0.0051

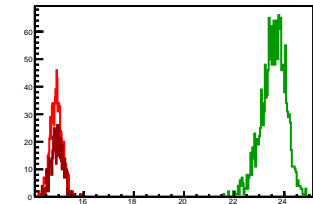


### Cycle 9, Sums

Entries: 1035      Entries: 1811      Entries: 669

Mean: 14.9021 +/- 0.0073      Mean: 23.5702 +/- 0.0114      Mean: 14.9380 +/- 0.0092

Std Dev: 0.2362 +/- 0.0052      Std Dev: 0.4872 +/- 0.0081      Std Dev: 0.2372 +/- 0.0065

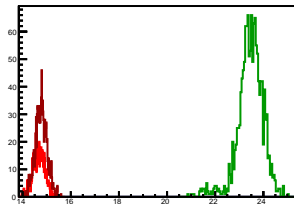


### Cycle 10, Sums

Entries: 640      Entries: 1413      Entries: 1026

Mean: 14.6662 +/- 0.0098      Mean: 23.4582 +/- 0.0144      Mean: 14.7637 +/- 0.0076

Std Dev: 0.2482 +/- 0.0069      Std Dev: 0.5428 +/- 0.0102      Std Dev: 0.2424 +/- 0.0054

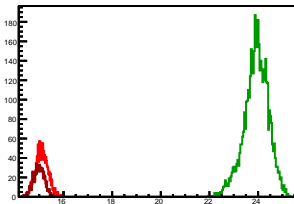


### Cycle 11, Sums

Entries: 1670      Entries: 4644      Entries: 1024

Mean: 15.1079 +/- 0.0061      Mean: 23.9236 +/- 0.0074      Mean: 14.9862 +/- 0.0072

Std Dev: 0.2485 +/- 0.0043      Std Dev: 0.5020 +/- 0.0052      Std Dev: 0.2291 +/- 0.0051

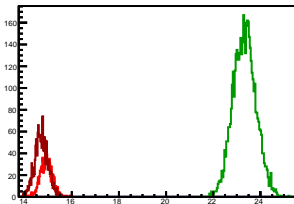


### Cycle 12, Sums

Entries: 1022      Entries: 4657      Entries: 1688

Mean: 14.9133 +/- 0.0078      Mean: 23.3241 +/- 0.0071      Mean: 14.7143 +/- 0.0069

Std Dev: 0.2483 +/- 0.0055      Std Dev: 0.4839 +/- 0.0050      Std Dev: 0.2819 +/- 0.0049

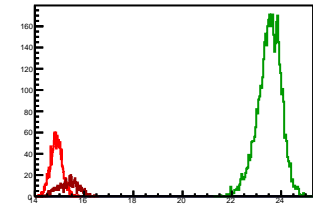


### Cycle 13, Sums

Entries: 1654      Entries: 4668      Entries: 563

Mean: 14.8699 +/- 0.0058      Mean: 23.5220 +/- 0.0070      Mean: 15.3564 +/- 0.0166

Std Dev: 0.2373 +/- 0.0041      Std Dev: 0.4767 +/- 0.0049      Std Dev: 0.3949 +/- 0.0118

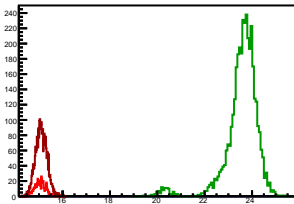


### Cycle 14, Sums

Entries: 566      Entries: 3790      Entries: 2676

Mean: 15.0517 +/- 0.0098      Mean: 23.5542 +/- 0.0118      Mean: 15.0970 +/- 0.0047

Std Dev: 0.2337 +/- 0.0069      Std Dev: 0.7273 +/- 0.0084      Std Dev: 0.2436 +/- 0.0033

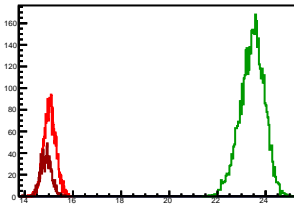


### Cycle 15, Sums

Entries: 2591      Entries: 4670      Entries: 1023

Mean: 15.0447 +/- 0.0050      Mean: 23.4395 +/- 0.0073      Mean: 14.8864 +/- 0.0072

Std Dev: 0.2524 +/- 0.0035      Std Dev: 0.4986 +/- 0.0052      Std Dev: 0.2295 +/- 0.0051

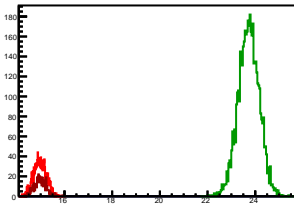


### Cycle 16, Sums

Entries: 1341      Entries: 4609      Entries: 558

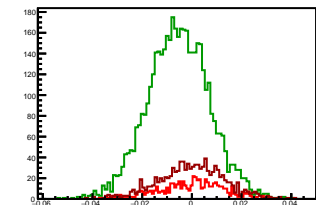
Mean: 14.9688 +/- 0.0073      Mean: 23.7263 +/- 0.0065      Mean: 14.9812 +/- 0.0106

Std Dev: 0.2680 +/- 0.0052      Std Dev: 0.4380 +/- 0.0046      Std Dev: 0.2503 +/- 0.0075



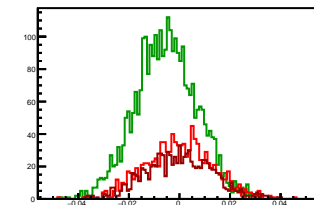
### Cycle 1, Asyms

Entries: 608	Entries: 4548	Entries: 1044
Mean: -0.0003 +/- 0.0005	Mean: -0.0054 +/- 0.0002	Mean: -0.0002 +/- 0.0004
Std Dev: 0.0129 +/- 0.0004	Std Dev: 0.0124 +/- 0.0001	Std Dev: 0.0131 +/- 0.0003



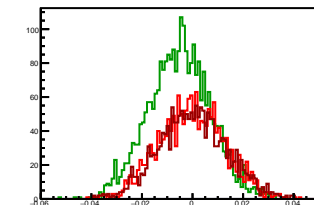
### Cycle 2, Asyms

Entries: 1033	Entries: 3091	Entries: 956
Mean: 0.0000 +/- 0.0004	Mean: -0.0052 +/- 0.0002	Mean: -0.0002 +/- 0.0004
Std Dev: 0.0130 +/- 0.0003	Std Dev: 0.0122 +/- 0.0002	Std Dev: 0.0131 +/- 0.0003



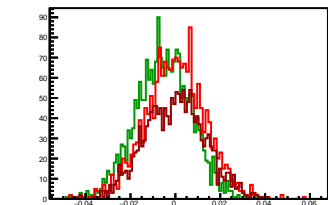
### Cycle 3, Asyms

Entries: 1765	Entries: 2744	Entries: 1808
Mean: -0.0003 +/- 0.0003	Mean: -0.0052 +/- 0.0002	Mean: 0.0001 +/- 0.0003
Std Dev: 0.0130 +/- 0.0002	Std Dev: 0.0123 +/- 0.0002	Std Dev: 0.0133 +/- 0.0002



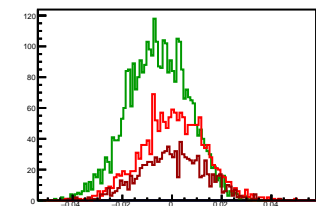
### Cycle 4, Asyms

Entries: 1833	Entries: 2174	Entries: 1655
Mean: -0.0001 +/- 0.0003	Mean: -0.0052 +/- 0.0003	Mean: -0.0003 +/- 0.0003
Std Dev: 0.0133 +/- 0.0002	Std Dev: 0.0123 +/- 0.0002	Std Dev: 0.0133 +/- 0.0002



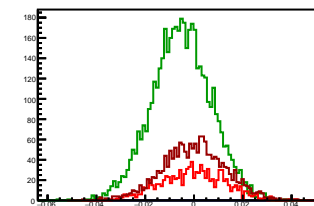
### Cycle 5, Asyms

Entries: 1639	Entries: 3491	Entries: 1002
Mean: 0.0005 +/- 0.0003	Mean: -0.0055 +/- 0.0002	Mean: 0.0002 +/- 0.0004
Std Dev: 0.0128 +/- 0.0002	Std Dev: 0.0124 +/- 0.0001	Std Dev: 0.0129 +/- 0.0003



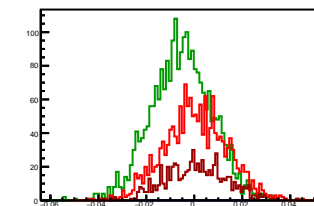
### Cycle 6, Asyms

Entries: 1004	Entries: 4672	Entries: 1716
Mean: -0.0005 +/- 0.0004	Mean: -0.0051 +/- 0.0002	Mean: 0.0000 +/- 0.0003
Std Dev: 0.0130 +/- 0.0003	Std Dev: 0.0121 +/- 0.0001	Std Dev: 0.0129 +/- 0.0002



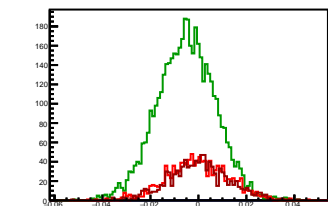
### Cycle 7, Asyms

Entries: 1670	Entries: 2452	Entries: 696
Mean: 0.0005 +/- 0.0003	Mean: -0.0053 +/- 0.0003	Mean: 0.0007 +/- 0.0005
Std Dev: 0.0131 +/- 0.0002	Std Dev: 0.0126 +/- 0.0002	Std Dev: 0.0125 +/- 0.0003



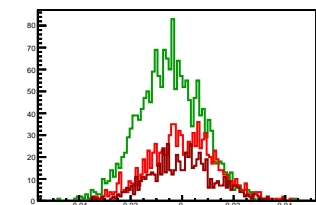
### Cycle 8, Asyms

Entries: 1198	Entries: 4695	Entries: 1056
Mean: -0.0003 +/- 0.0004	Mean: -0.0051 +/- 0.0002	Mean: 0.0001 +/- 0.0004
Std Dev: 0.0128 +/- 0.0003	Std Dev: 0.0122 +/- 0.0001	Std Dev: 0.0126 +/- 0.0003



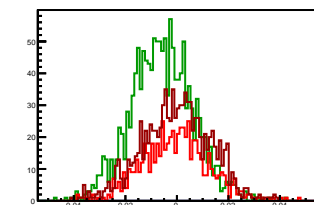
### Cycle 9, Asyms

Entries: 1035	Entries: 1811	Entries: 669
Mean: 0.0003 +/- 0.0004	Mean: -0.0048 +/- 0.0003	Mean: 0.0002 +/- 0.0005
Std Dev: 0.0130 +/- 0.0003	Std Dev: 0.0122 +/- 0.0002	Std Dev: 0.0125 +/- 0.0003



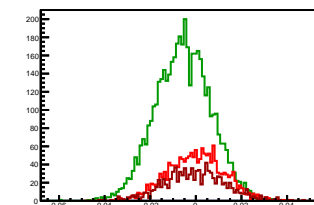
### Cycle 10, Asyms

Entries: 640	Entries: 1413	Entries: 1026
Mean: -0.0006 +/- 0.0005	Mean: -0.0057 +/- 0.0003	Mean: -0.0003 +/- 0.0004
Std Dev: 0.0130 +/- 0.0004	Std Dev: 0.0122 +/- 0.0002	Std Dev: 0.0133 +/- 0.0003



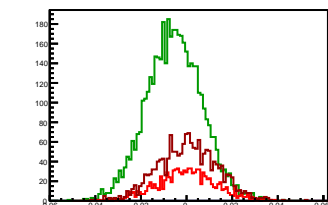
### Cycle 11, Asyms

Entries: 1670	Entries: 4644	Entries: 1024
Mean: 0.0000 +/- 0.0003	Mean: -0.0056 +/- 0.0002	Mean: -0.0003 +/- 0.0004
Std Dev: 0.0122 +/- 0.0002	Std Dev: 0.0121 +/- 0.0001	Std Dev: 0.0134 +/- 0.0003



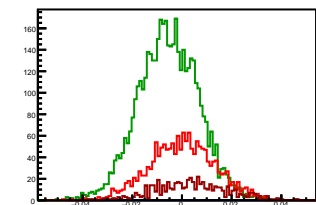
### Cycle 12, Asyms

Entries: 1022	Entries: 4657	Entries: 1688
Mean: -0.0002 +/- 0.0004	Mean: -0.0054 +/- 0.0002	Mean: 0.0005 +/- 0.0003
Std Dev: 0.0128 +/- 0.0003	Std Dev: 0.0121 +/- 0.0001	Std Dev: 0.0130 +/- 0.0002



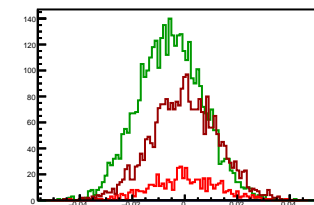
### Cycle 13, Asyms

Entries: 1654	Entries: 4668	Entries: 563
Mean: 0.0001 +/- 0.0003	Mean: -0.0055 +/- 0.0002	Mean: 0.0035 +/- 0.0006
Std Dev: 0.0131 +/- 0.0002	Std Dev: 0.0122 +/- 0.0001	Std Dev: 0.0142 +/- 0.0004



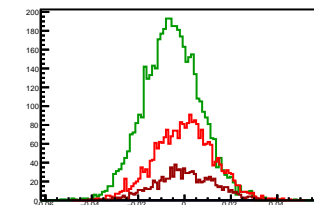
### Cycle 14, Asyms

Entries: 566	Entries: 3790	Entries: 2676
Mean: -0.0000 +/- 0.0005	Mean: -0.0054 +/- 0.0002	Mean: -0.0001 +/- 0.0002
Std Dev: 0.0128 +/- 0.0004	Std Dev: 0.0123 +/- 0.0001	Std Dev: 0.0127 +/- 0.0002



### Cycle 15, Asyms

Entries: 2591	Entries: 4670	Entries: 1023
Mean: 0.0001 +/- 0.0003	Mean: -0.0053 +/- 0.0002	Mean: 0.0001 +/- 0.0004
Std Dev: 0.0129 +/- 0.0002	Std Dev: 0.0122 +/- 0.0001	Std Dev: 0.0127 +/- 0.0003



### Cycle 16, Asyms

Entries: 1341	Entries: 4609	Entries: 558
Mean: 0.0003 +/- 0.0003	Mean: -0.0054 +/- 0.0002	Mean: -0.0004 +/- 0.0005
Std Dev: 0.0128 +/- 0.0002	Std Dev: 0.0121 +/- 0.0001	Std Dev: 0.0130 +/- 0.0004

