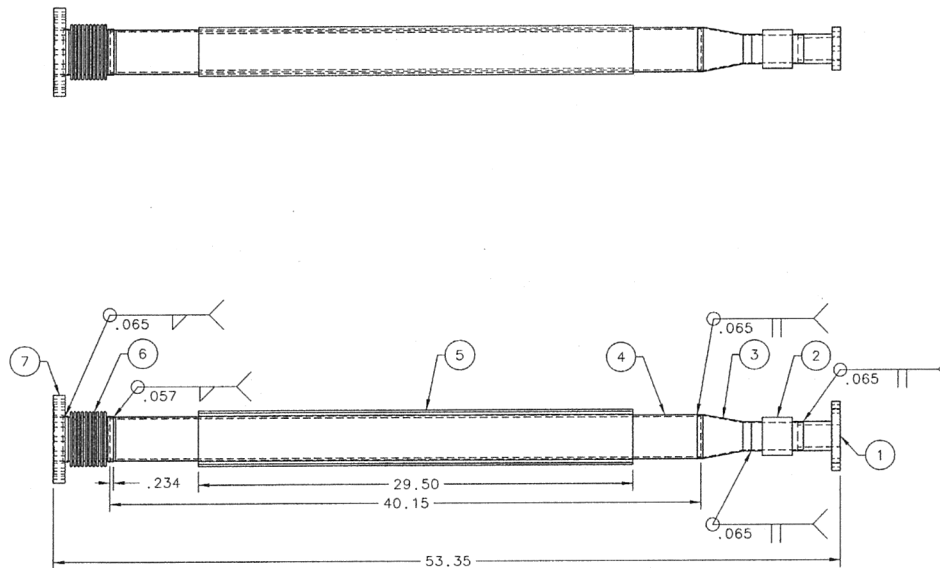


REVISION HISTORY			
ZONE	REV	DESCRIPTION	DATE
		APPROVED	



NOTES:

- ALL WELDING SHALL HAVE QUALIFIED WELDING PROCEDURE SPECIFICATIONS (WPS), AND WELDER PERFORMANCE QUALIFICATION (WPQ) AVAILABLE FOR REVIEW. ALL WPS AND WPQ SHALL BE QUALIFIED TO THE LATEST EDITION OF ASME SECTION IX IN THE PERFORMANCE OF THIS WORK. THE APPLICABLE CODE WILL BE ASME B31.3 FOR FABRICATION AND INSPECTION CRITERIA. ALL INSPECTIONS SHALL BE DONE BY PERSONNEL QUALIFIED IN ACCORDANCE TO THE LATEST EDITION OF THE RECOMMENDED PRACTICES OF ASNT-TC-1A.
- EXAMINATION PER ASME B31.3 CATEGORY D REQUIREMENTS IS REQUIRED. THE EXAMINATION RECORDS AND REPORTS ARE REQUIRED, AND SHALL BE PRESENTED TO THE RESPONSIBLE ENGINEER AT THE END OF THE PROJECT.
- THE JLAB RISK CODE IS 2; ALL WELDS ARE JLAB CLASS "B"; JLAB WPS 002 REVISION 2 SHALL BE USED. HOWEVER, IF THE WELDMENT IS FABRICATED BY A VENDOR OF JLAB, THIS SPECIFIC REQUIREMENT SHALL BE IGNORED.
- VACUUM TEST TO 1×10^{-6} ATM CC/SEC OR BETTER IS REQUIRED.

1	7	MDC-110025	6 INCH CF BLANK, BORED 3.00 WITH 3.13 CBORE X .156 DP	SS	-
1	6	VAC0120200-1000	BELLOWS- 3.00 ID W/ CUFFS	SS 304	-
1	5	A06002-02-01-0003	MODIFIED 3 IN SQ TUBE	A36	-
1	4	A06002-02-02-0002	TUBING 3 IN X .125 WALL	SS 304	-
1	3	MDC-402508	CONICAL REDUCER 3 X 2	SS 304	-
1	2	MDC-470506	BELLOWS	SS 304	-
1	1	A06002-02-01-0001	DOWNSTREAM EXT. FLANGE	SS 304	-

DOCUMENT CONTROL STAMP		DIM & TOL PER ASME Y14.5- UNLESS OTHERWISE SPECIFIED DIMENSIONS ARE IN INCHES TOLERANCES ARE DECIMAL ANGLES FRACTIONS .XX .X .01 & .001 & N/A .XX .X .005		TRACKING NO. N/A APPROVALS DATE DRAWN N. HODGES CHECKED [Signature] 29 MAY 09 APPROVED [Signature] 4 June 09 APPROVED [Signature] 19 June 09		United States Department of Energy Jefferson Lab Thomas Jefferson National Accelerator Facility Newport News Virginia HALL A - A06002 PREX PREX BEAMLINE SEPTUM MAGNET BEAMLINE SIZE DWG. NO. A06002-02-01-0000 SHEET 1 OF 1	
MATERIAL FINISH 120 UNLESS OTHERWISE NOTED DEBURS & BREAK ALL SHARP EDGES DO NOT SCALE DRAWING		THIRD ANGLE PROJECTION		PARTS LIST		REV. -	