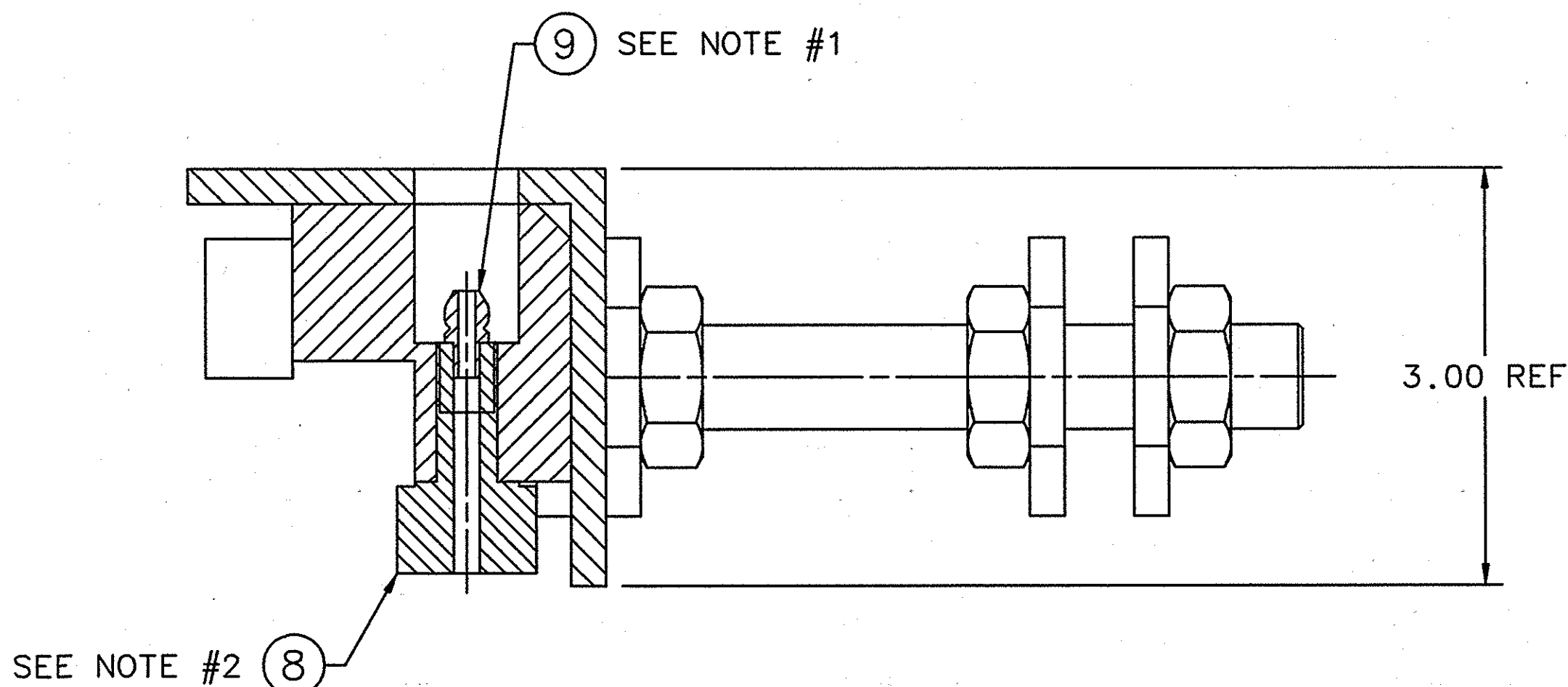
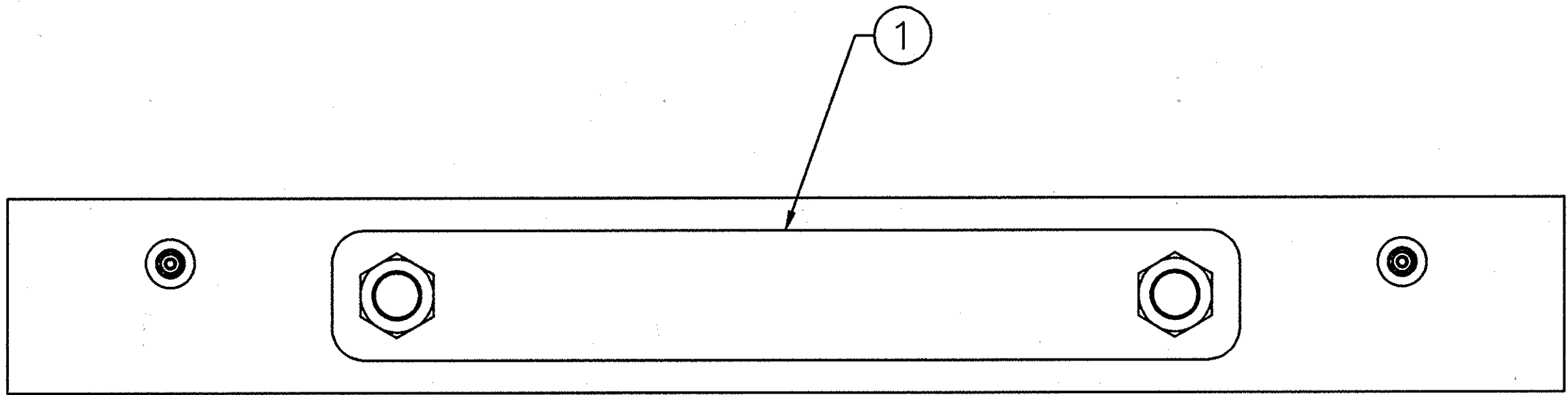
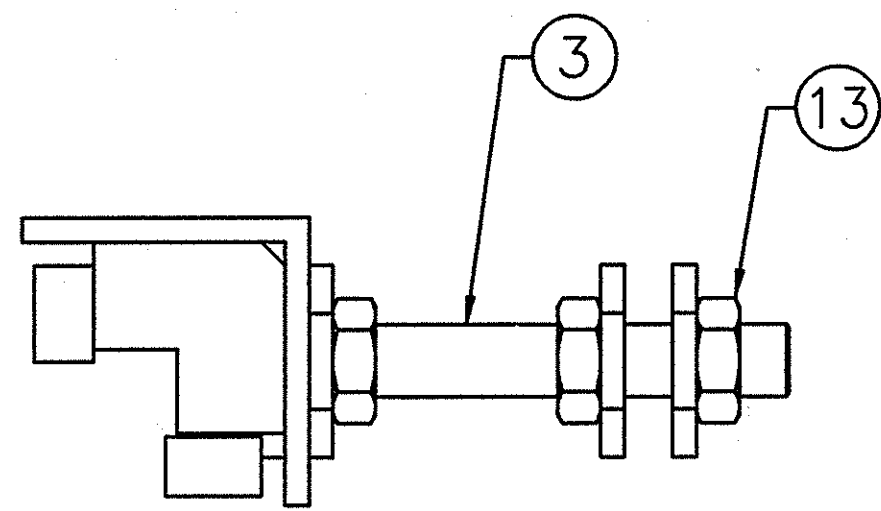
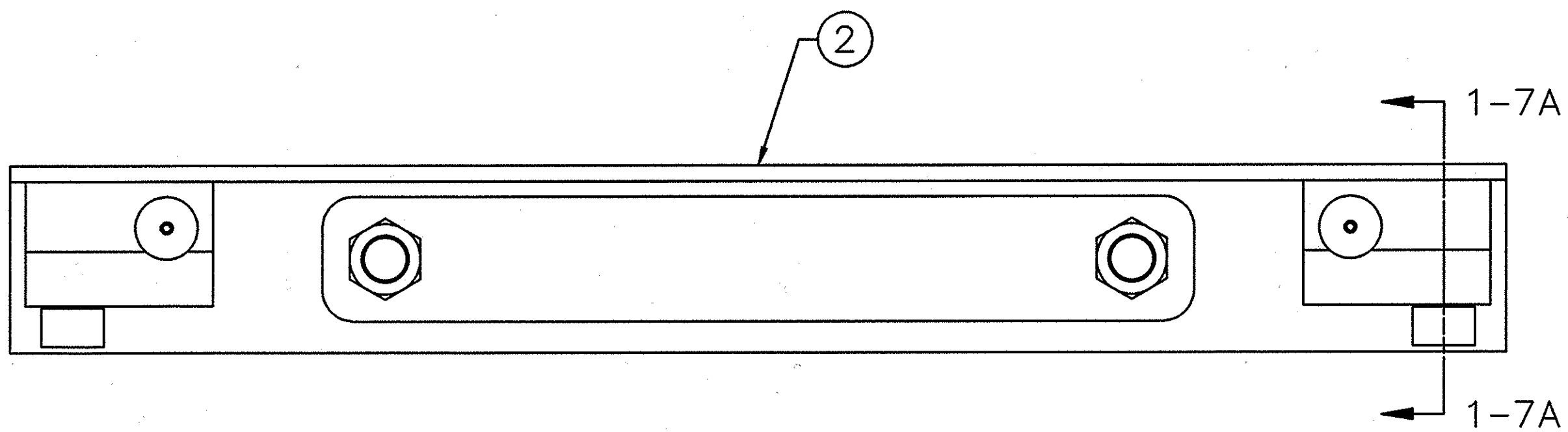
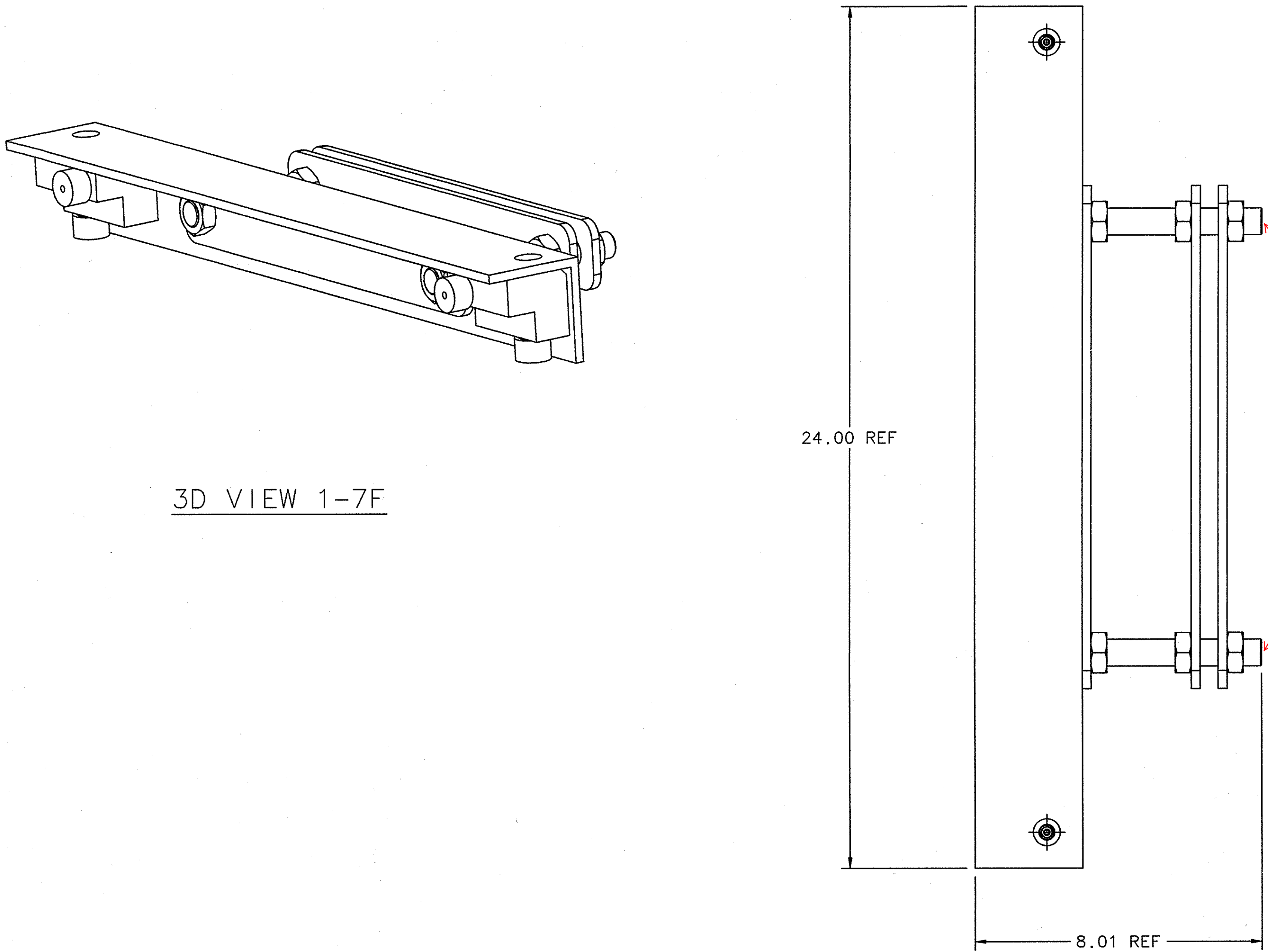


REVISION HISTORY				
ZONE	REV	DESCRIPTION	DATE	APPROVED
ALL	A	QUANTITY FOR ITEM #8 AND #9 WAS 2 MODIFIED ITEM #2	5/15/00 24 MAY 00	SME C.R.



- NOTES:
- PRESS FIT 3/16 DRIVE LUBRICATION FITTING INTO THE ROLLER BEARING PRIOR TO INSTALLATION. LUBRICATE AS REQUIRED WITH A LITHIUM BASED GREASE. NO LONGER THAN ONE YEAR INTERVAL.
  - INSTALL CAMROL BEARINGS AS SHOWN AND TORQUE TO 250 IN-LB.

8	13	-	NUT HEX JAM 3/4-16	316 STNLS STL	-
-	12	-	-	-	-
-	11	-	-	-	-
-	10	-	-	-	-
4	9	ALEMITE #1633	3/16 DRIVE LUB. FITTING	-	-
4	8	McGill CCF-1-SB	CAMROL BEARING	-	-
-	7	-	-	-	-
-	6	-	-	-	-
-	5	-	-	-	-
-	4	-	-	-	-
2	3	-	THREADED ROD 3/4-16 x 6.00 LG	316 STNLS STL	-
1	2	65520-D-34018-02	LOWER ROLLER	A36	-
4	1	65520-D-34018-01	LONG CLAMP PLATE	A36	-

QTY	ITEM	PART OR IDENTIFYING NO.	NOMENCLATURE OR DESCRIPTION	MATERIAL SPECIFICATION	NOTES
8	13	-	NUT HEX JAM 3/4-16	316 STNLS STL	-
-	12	-	-	-	-
-	11	-	-	-	-
-	10	-	-	-	-
4	9	ALEMITE #1633	3/16 DRIVE LUB. FITTING	-	-
4	8	McGill CCF-1-SB	CAMROL BEARING	-	-
-	7	-	-	-	-
-	6	-	-	-	-
-	5	-	-	-	-
-	4	-	-	-	-
2	3	-	THREADED ROD 3/4-16 x 6.00 LG	316 STNLS STL	-
1	2	65520-D-34018-02	LOWER ROLLER	A36	-
4	1	65520-D-34018-01	LONG CLAMP PLATE	A36	-

DIM & TOL PER ANSI Y14.5 UNLESS OTHERWISE SPECIFIED DIMENSIONS ARE IN INCHES TOLERANCES ARE: FRACTIONS DECIMAL ANGLES ±1/64 .001 ±.015 ±.50° .XXX ±.005	CADD I.D. NO.: 1-DEAS PROJ: 65520 LBRY: 34018	Thomas Jefferson National Accelerator Facility NEWPORT NEWS, VIRGINIA UNITED STATES DEPARTMENT OF ENERGY
FINISH 125 UNLESS OTHERWISE NOTED DEBURR & BREAK ALL SHARP EDGES DO NOT SCALE DRAWING	APPROVALS DRAWN S. ESP 11/11/99 CHECKED ALAN R. GAVALYA 15 NOV 99 APPROVED WOUTSEKHOWSKI 15 NOV 99 APPROVED - -	DATE 15 NOV 99 15 NOV 99 -
MATERIAL AS NOTED	SIZE DWG. NO. E 65520-E-34018-00	REV. A

