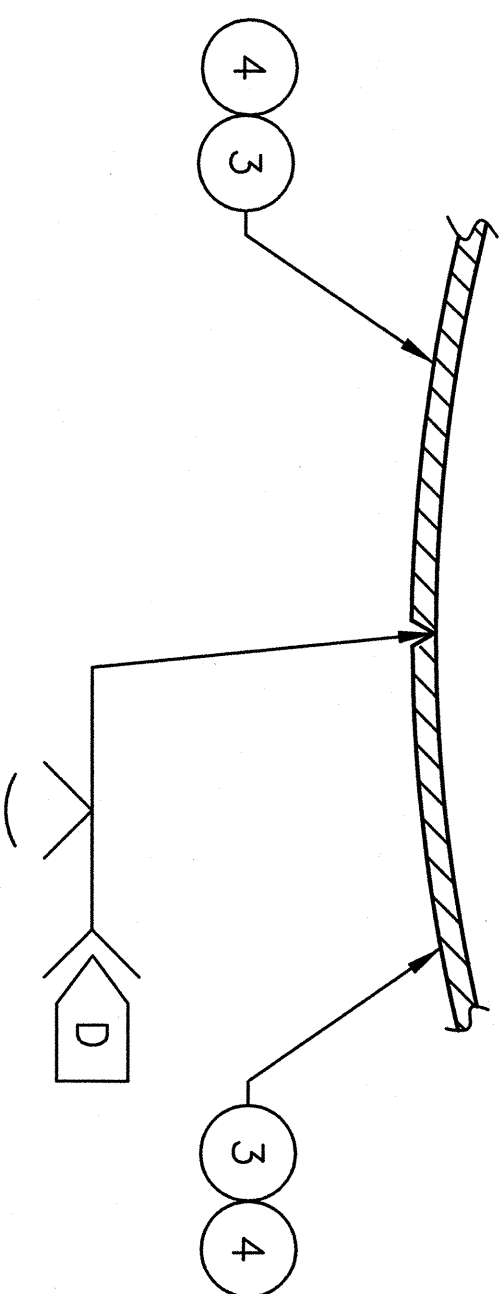
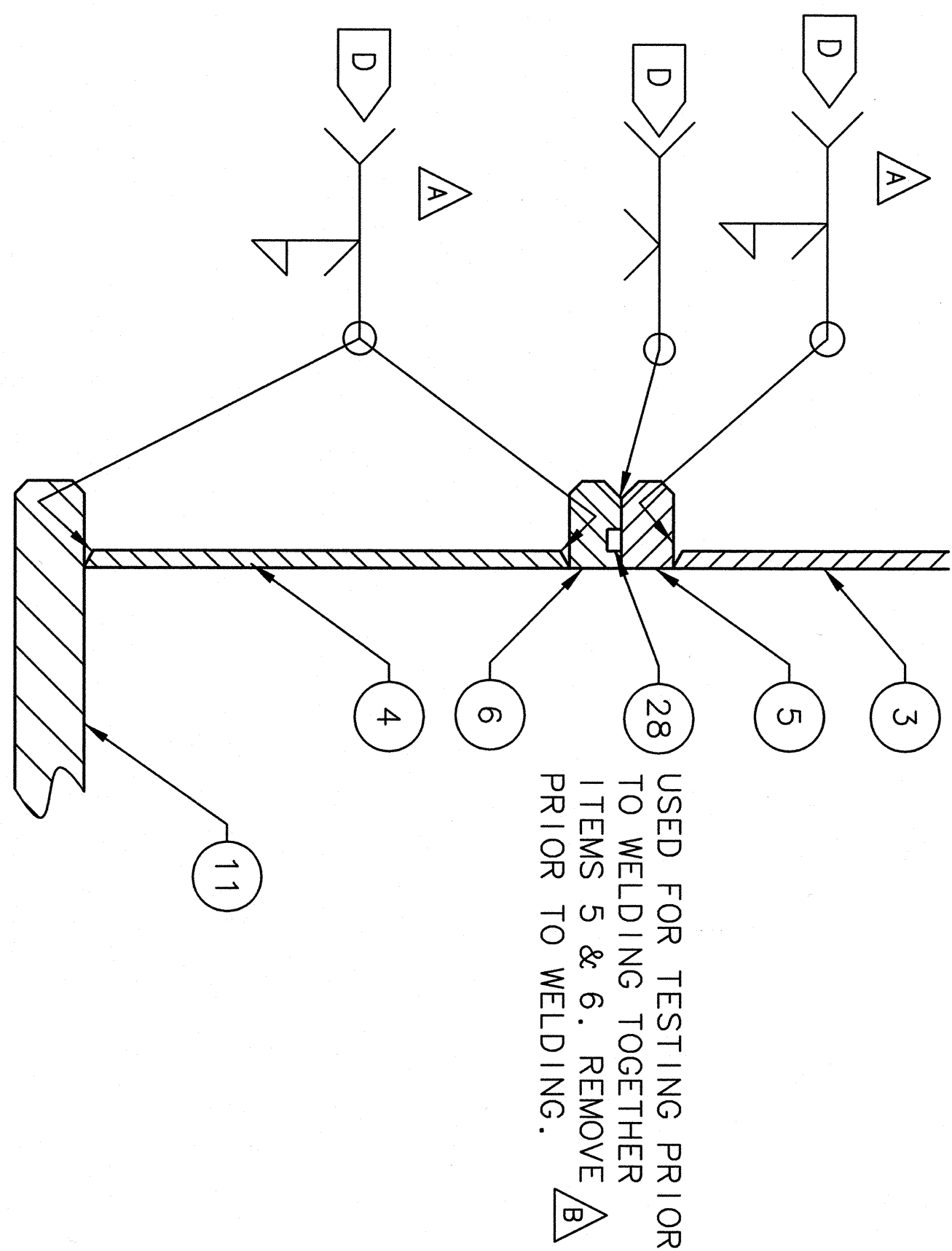
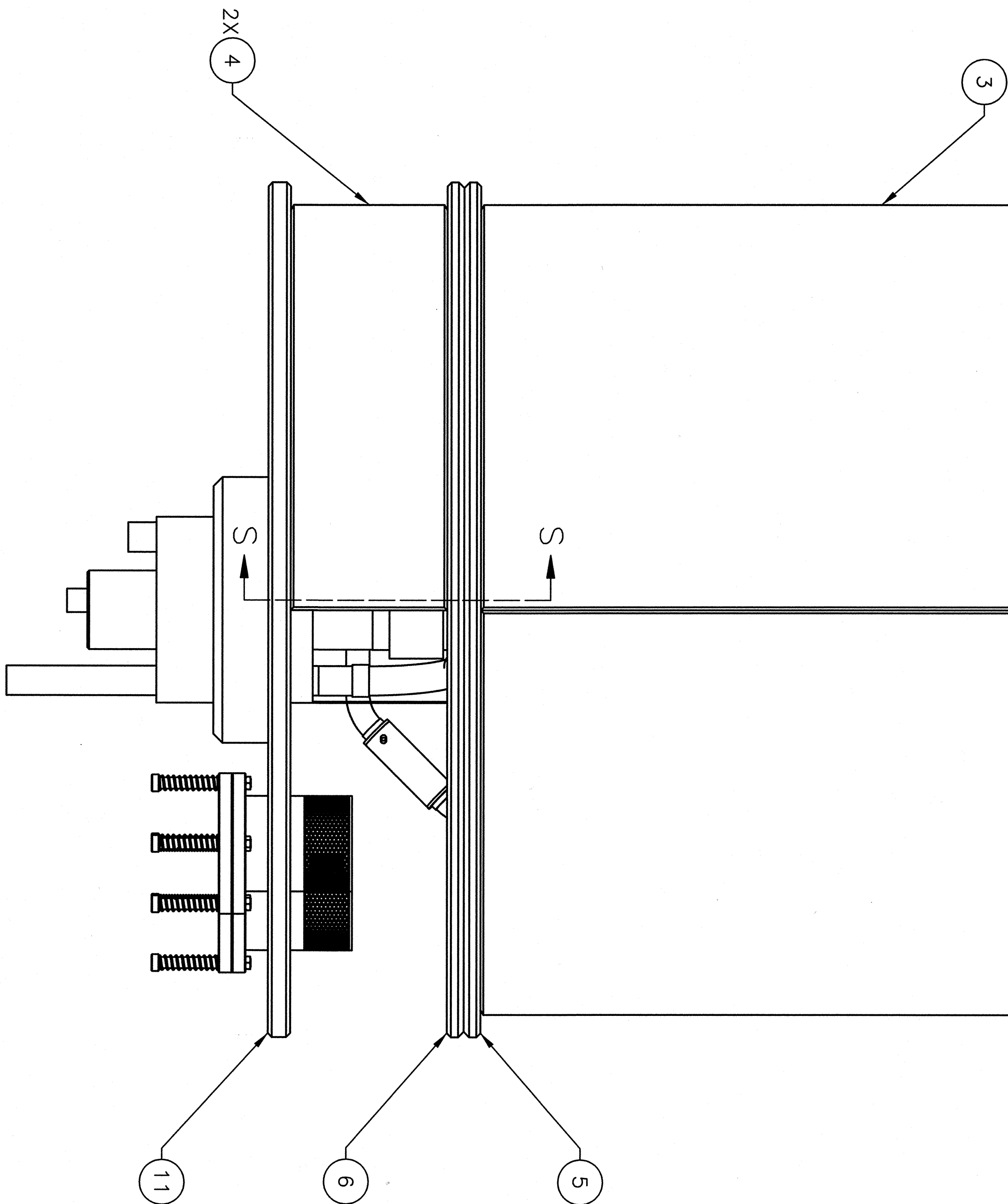
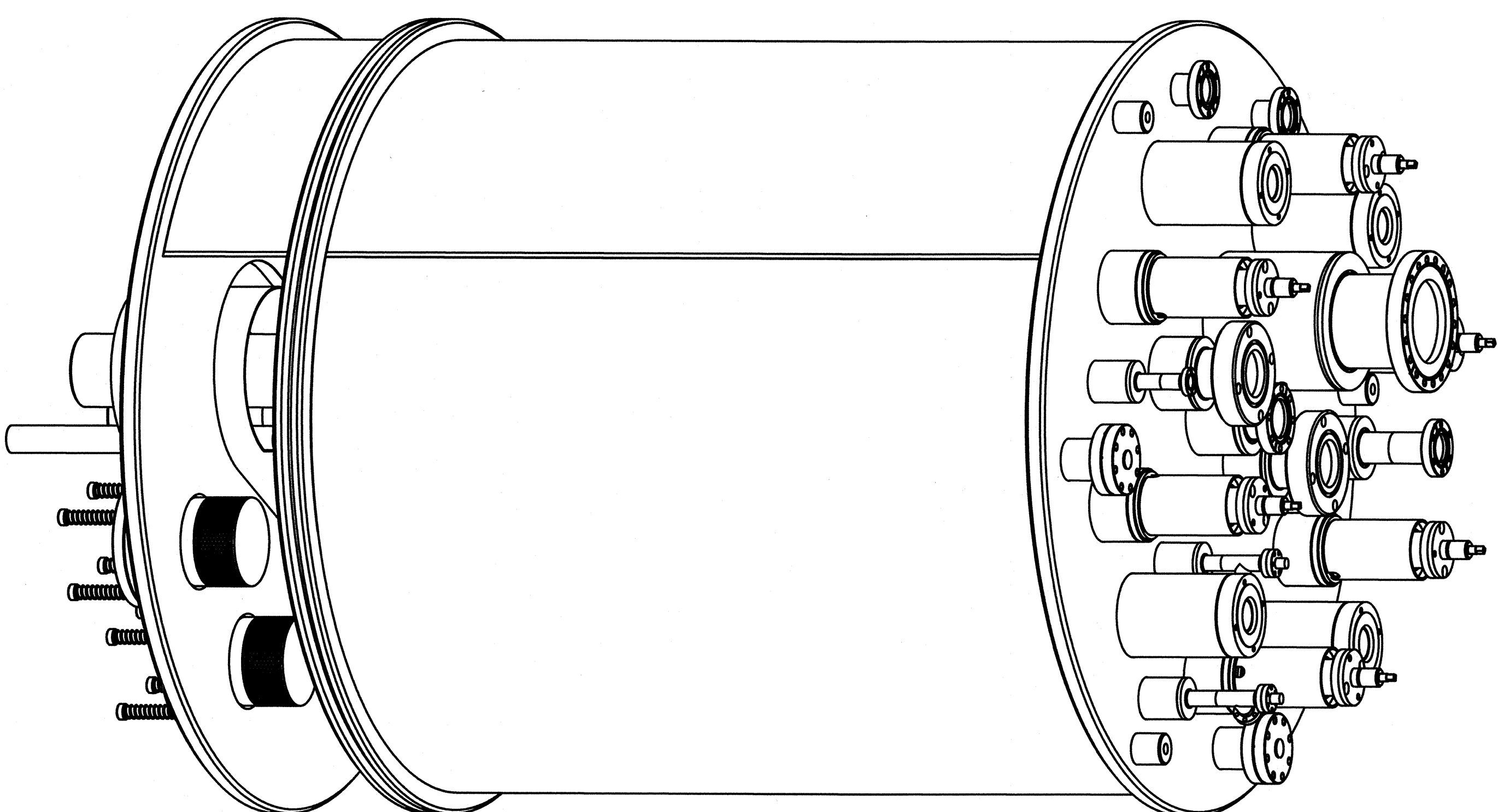


SECTION P-P
SCALE: 1/2



SECTION R-R
SCALE: 1/2
(TYPICAL 2 PLACES ON ITEMS 3 AND 4)



SECTION S-S
SCALE: 1/2

- CRYO BOX ASSEMBLY PROCEDURE - STAGE #3
1. ITEMS 3 (CRYO BOX VESSEL CLAMSHELL) ARE TO BE WELDED TOGETHER AND TO ITEM 2 (CRYO BOX TOP PLATE WELDMENT) AS SHOWN IN SECTIONS P-P AND R-R.
 2. WELD ITEMS 4 (CRYO BOX VESSEL CLAMSHLL SHORT) TO ITEM 6 (CRYOBOX VESSEL CLAMSHLL RING) AND ITEM 11 (CRYOBOX BOTTOM PLATE WELDMENT) AS SHOWN IN SECTIONS R-R AND S-S.
 3. WELD ITEM 6 (CRYO BOX VESSEL CLAMSHLL RING) TO ITEM 5 (CRYOBOX VESSEL CLAMSHLL RING WITH GROOVE) AND ITEM 11 (CRYO BOX BOTTOM PLATE WELDMENT) AS SHOWN IN SECTIONS R-R AND S-S.
 4. TO HELP FACILITATE ASSEMBLY, FABRICATION MAY PERFORM OPERATIONS IN NOTES 2 AND 3 AFTER FINALIZING MAGNET AND CRYO BOX CONNECTIONS.
 5. WELDING PROCEDURES IN NOTES 2 AND 3 ARE TO BE DONE BY MAGNET MANUFACTURER AT FINAL ASSEMBLY.