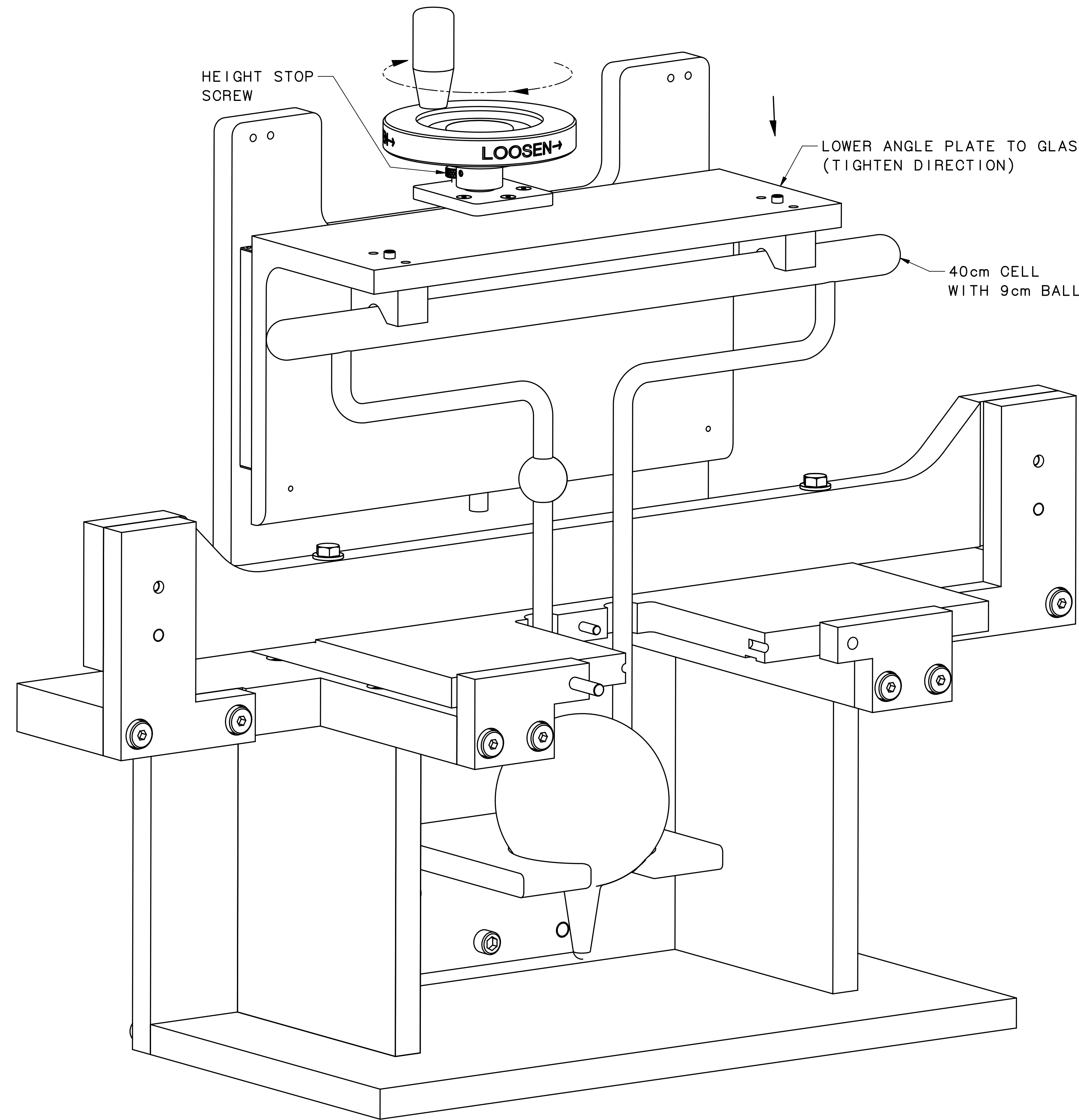


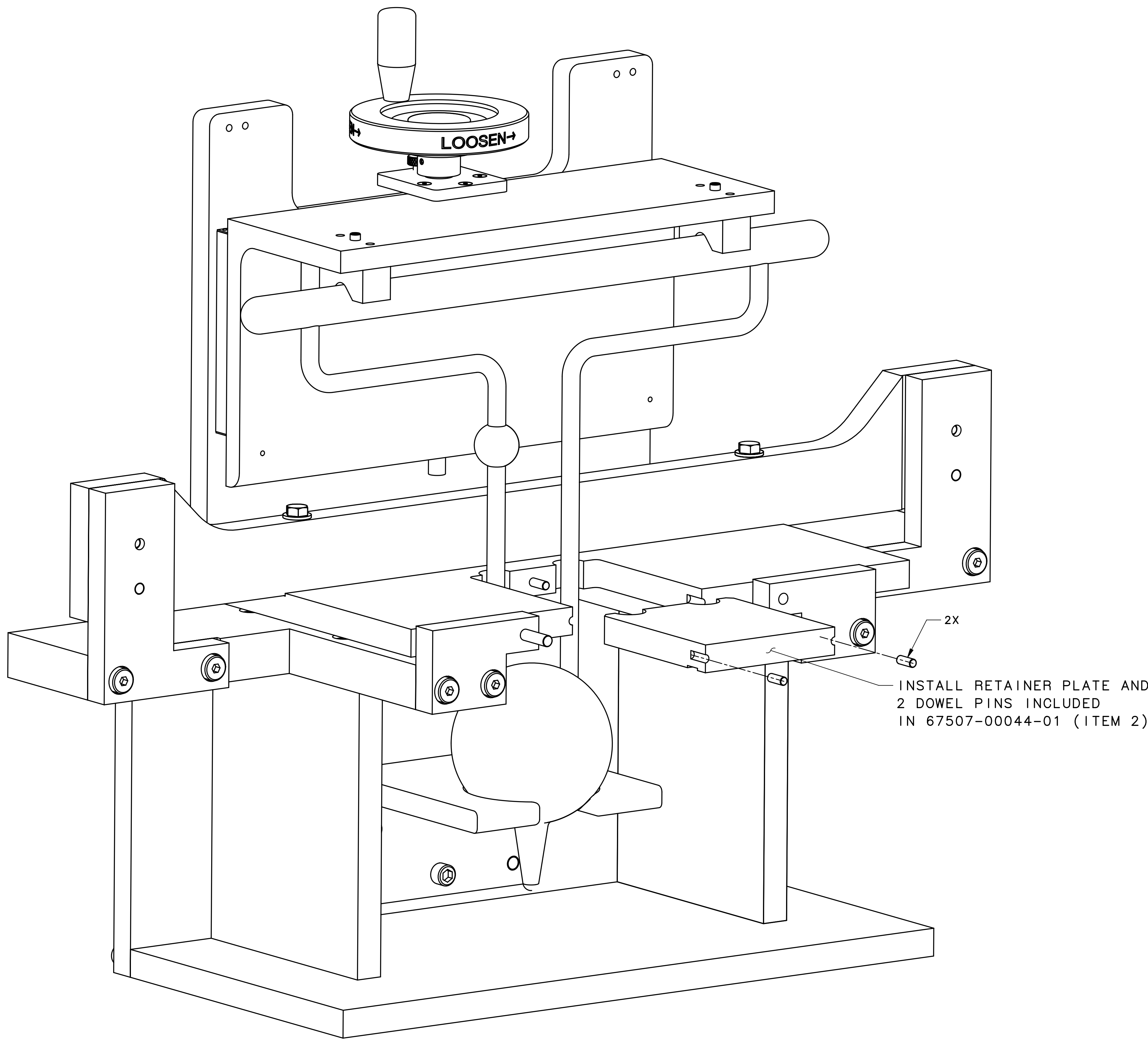
STEP TWO
1. INSTALL RTD FEED THRU.
APPLY SEALANT TO UNDERSIDE.



STEP THREE
1. INSTALL 40cm CELL GENTLY.
2. LOWER ANGLE PLATE TO ALIGN CELL GENTLY.
3. ADJUST HEIGHT STOP SCREW.

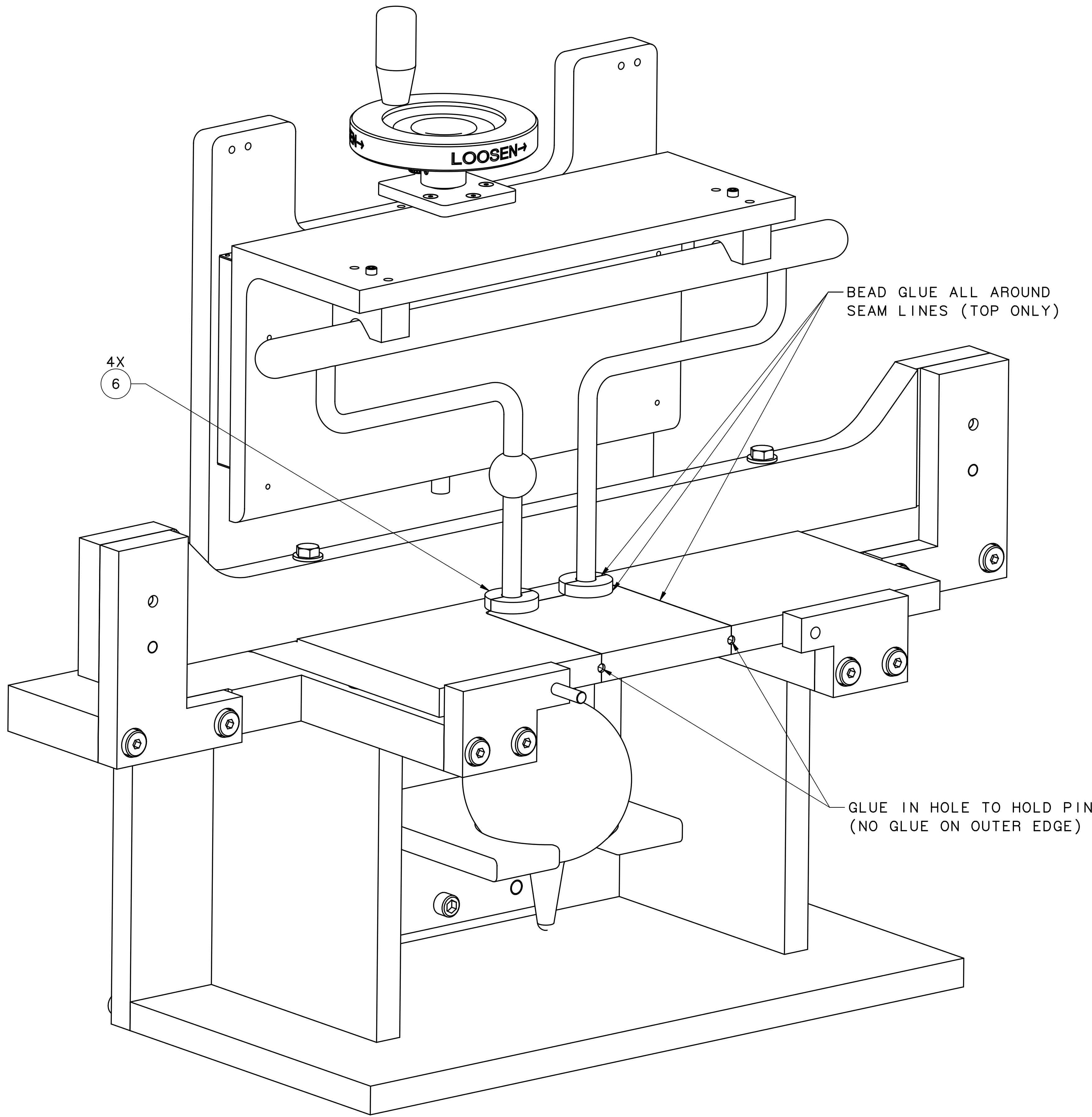
STEP FOUR

1. INSTALL RETAINER PLATE AND 2 DOWEL PINS.



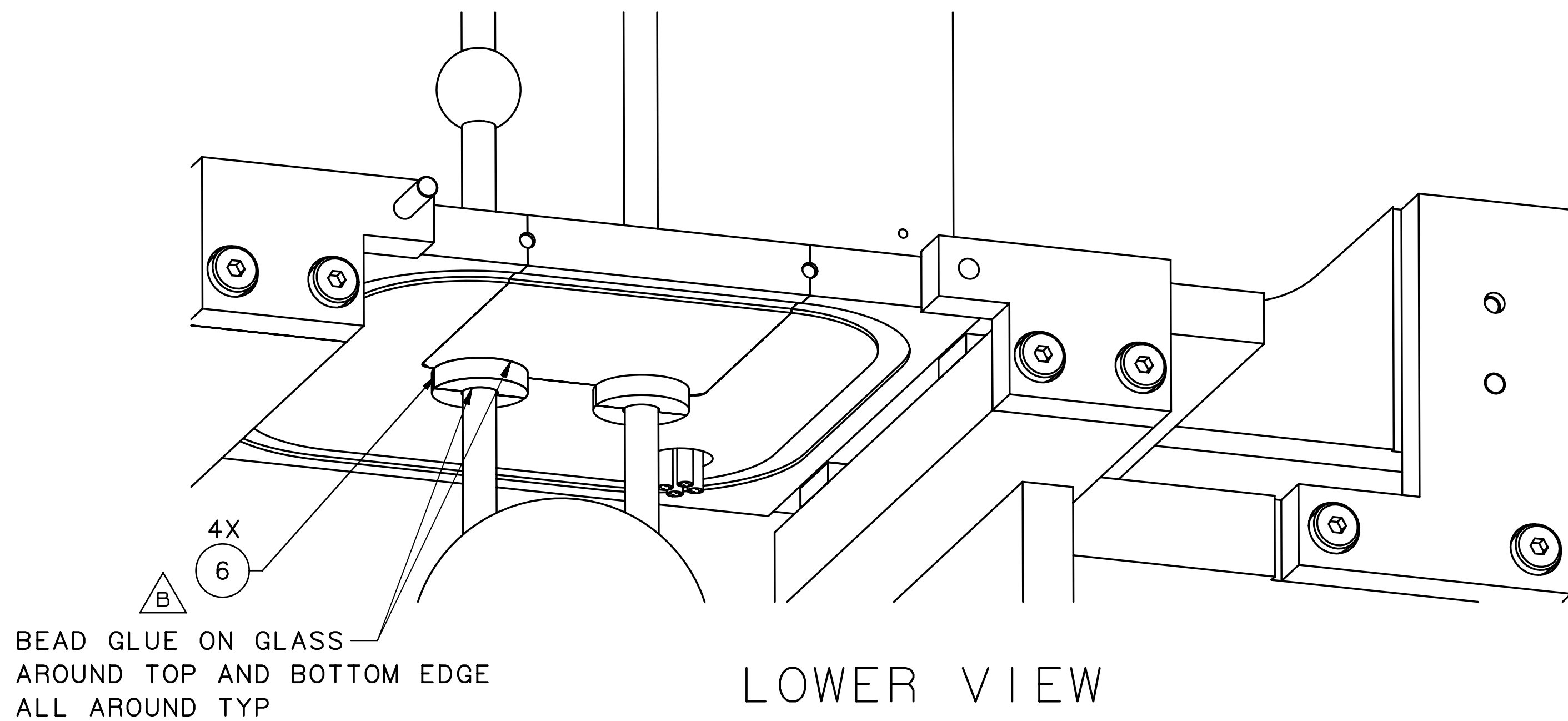
STEP FIVE

1. INSTALL ITEM 6.
2. BEAD GLUE ITEM 7 ALL AROUND SEAM LINES.
3. GLUE IN HOLE TO HOLD PIN AS SHOWN.



STEP SIX

1. INSTALL ITEM 6.
2. BEAD GLUE ITEM 7 AS SHOWN.



LOWER VIEW

In accordance with the Jefferson Lab ESH&Q manual
Subject Matter Expert(SME) signatures may be required

DOCUMENT CONTROL STAMP	SIZE (DWG. NO.)	REV.
E	67507-00075	B
SCALE	N/A	SHEET 4 OF 4