

Ergonomic Solutions

OWNER'S MANUAL

MECHANICAL POST TABLE • MODEL MT

Contents

Warning & Safety Instructions	1	Ordering Replacement or Extra Parts	2
Receiving Instructions	1	Mechanical Post Table Parts List	3
Warranty	1	DC Powered Post Table	4-5
Installation Instructions	2	Battery Charger Operating Instructions	6
Operating Instructions	2	Material Safety Data Sheets	7-10

WARNINGS & SAFETY INSTRUCTIONS

Read owner's manual completely before operating unit!

- Not a personnel lift.
- Never go under forks if there is weight on unit.
- Remove weight & disconnect power before working on unit.
- Use only maintenance parts supplied or approved by the manufacturer.
- Do not change pressure relief valve setting.
- Do not clamp hydraulic cylinder in a vise as you may distort the barrel.
- Never operate the lift unless you are watching it.
- Do not go near leaks - High pressure oil easily punctures skin causing serious injury, gangrene, or death.
- Load tight against the bulkhead within the rated capacity.
- Transport loads in the lowered position only.
- Don't continue to operate the UP control if unit is not raising.
- Relieve system pressure by operating the DOWN control after the unit has come to rest.
- Consult factory before adding or performing any modification to the original equipment.
- Do not use brake fluids or jack oils. Use AW-32 Hydraulic oil or equal.

RECEIVING INSTRUCTIONS

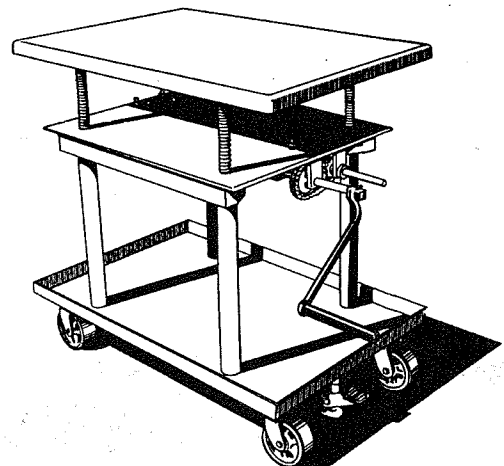
Every unit is thoroughly tested and inspected prior to shipment. However, it is possible that the unit may incur damage during transit. If you see damage when unloading make a note of it on the SHIPPER RECEIVER.

Remove all packing and strapping material, inspect for damage. IF DAMAGE IS EVIDENT, FILE A CLAIM WITH THE CARRIER IMMEDIATELY! Also, check the unit size, type of power unit, etc., to ensure the unit is correct for the intended application.

WARRANTY

This product is warranted for 1 YEAR from date of purchase to be free of manufacturing defects in material and workmanship. The manufacturer's obligation hereunder is limited to repairing such products during the warranty period, provided the product is sent prepaid back to the factory.

This warranty does not cover normal wear of parts or damage resulting from any of the following: negligent use or misuse of the product, use or application contrary to installation instructions, or disassembly, repair or alteration by any person prior to authorization from a factory representative.



**MECHANICAL POST TABLE
MODEL MT**

ENGLISH

ESPAÑOL

INSTALLATION INSTRUCTIONS

INSTALLING CASTERS (fig. 1)

- 1.) Two 5" dia. swivel casters are installed on one end of base frame (handle end of platform) and 5" dia. rigid casters are installed on other end.
- 2.) Place the caster base plate into the caster pad bracket (located on the bottom of frame).
- 3.) Insert 3/8" x 16 UNC x 5" long carriage bolt through the square hole in the caster pad to hold the caster in place.
- 4.) Place 3/8"-16 UNC lock nut on each bolt and tighten securely.

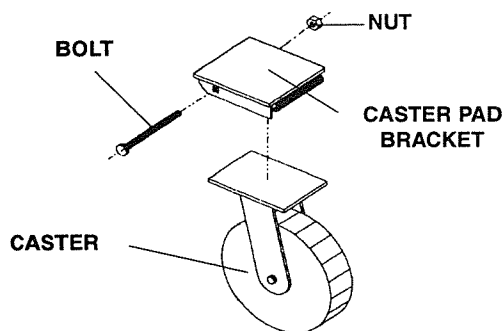


Figure 1

INSTALLING FLOOR LOCK - (fig. 2)

- 1.) Align mounting plate of floor lock with redrilled holes on bottom of frame.
- 2.) Install floor lock with foot pedal bracket facing out.
- 3.) Insert four 3/8"-16 x 1" long hex head cap screws through top of frame.
- 4.) Place four 3/8" - 16 lock nuts on each bolt and tighten securely.

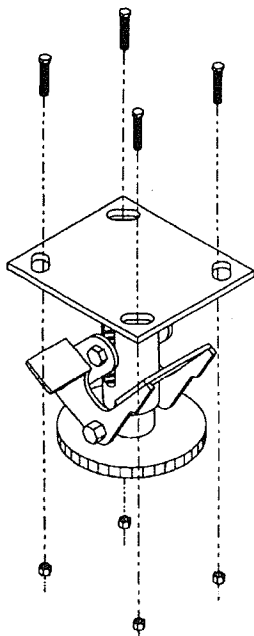


Figure 2

OPERATING INSTRUCTIONS

MANUAL HAND CRANK

Attach hand crank. Turn clockwise to raise unit and counter clockwise to lower unit.

DC POWERED

Position of the deck is controlled by the hand-held pendant control. The arrows display direction of travel of deck.

In order to operate the unit, pressure must be maintained in the UP or DOWN position to raise or lower deck. On releasing either button, deck will remain that particular position until the button is depressed again.

RESPONSIBILITIES OF OWNERS/USERS

It is the responsibility of the owner/user for the following:

- 1.) The lift must be inspected and maintained in accordance with the guidelines in this manual.
- 2.) Any lift not in safe operating condition must be removed from service until it is returned to proper operating condition.

Unsafe condition may include, but is not limited to the following: excessive hydraulic or air leakage, missing rollers, pins, or fasteners, any cracked or deformed structural members, cut or frayed hydraulic, electric or air lines, and damaged controls or safety devices.

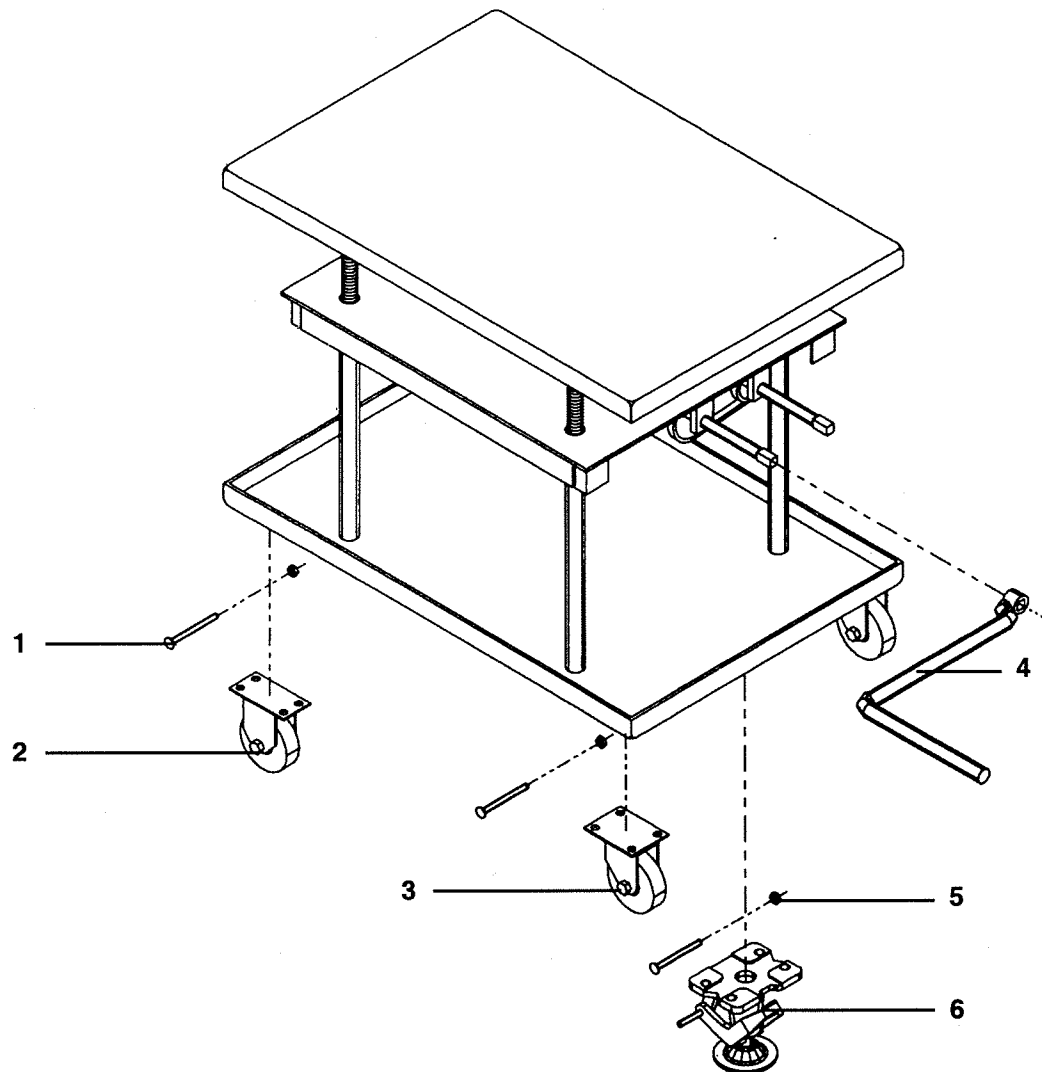
All repairs and maintenance must be performed by qualified personnel.

- 3.) Lift may only be used by authorized personnel. All lift operators must have read and understood all operating procedures and safety guidelines in this Owner's Manual.
- 4.) Lift must never be overloaded.
- 5.) Operator must ensure that all safety features of the lift are functioning properly before each use.
- 6.) Any modifications to the lift must be approved in writing by the manufacturer.

ORDERING REPLACEMENT OR EXTRA PARTS

Our company takes pride in using the finest available parts for our equipment. We are not responsible for equipment failure resulting from the use of unapproved replacement parts. To order replacement or extra parts for your equipment contact Customer Service at the factory. In any correspondence with the factory please include the **Serial Number** which is inscribed on the nameplate of the piece of equipment. Use only the part numbers provided in this Owner's Manual. When ordering parts for AC power units please indicate the motor phase and voltage that the equipment is operating on.

PARTS IDENTIFICATION **MECHANICAL POST TABLE • MODEL MT**



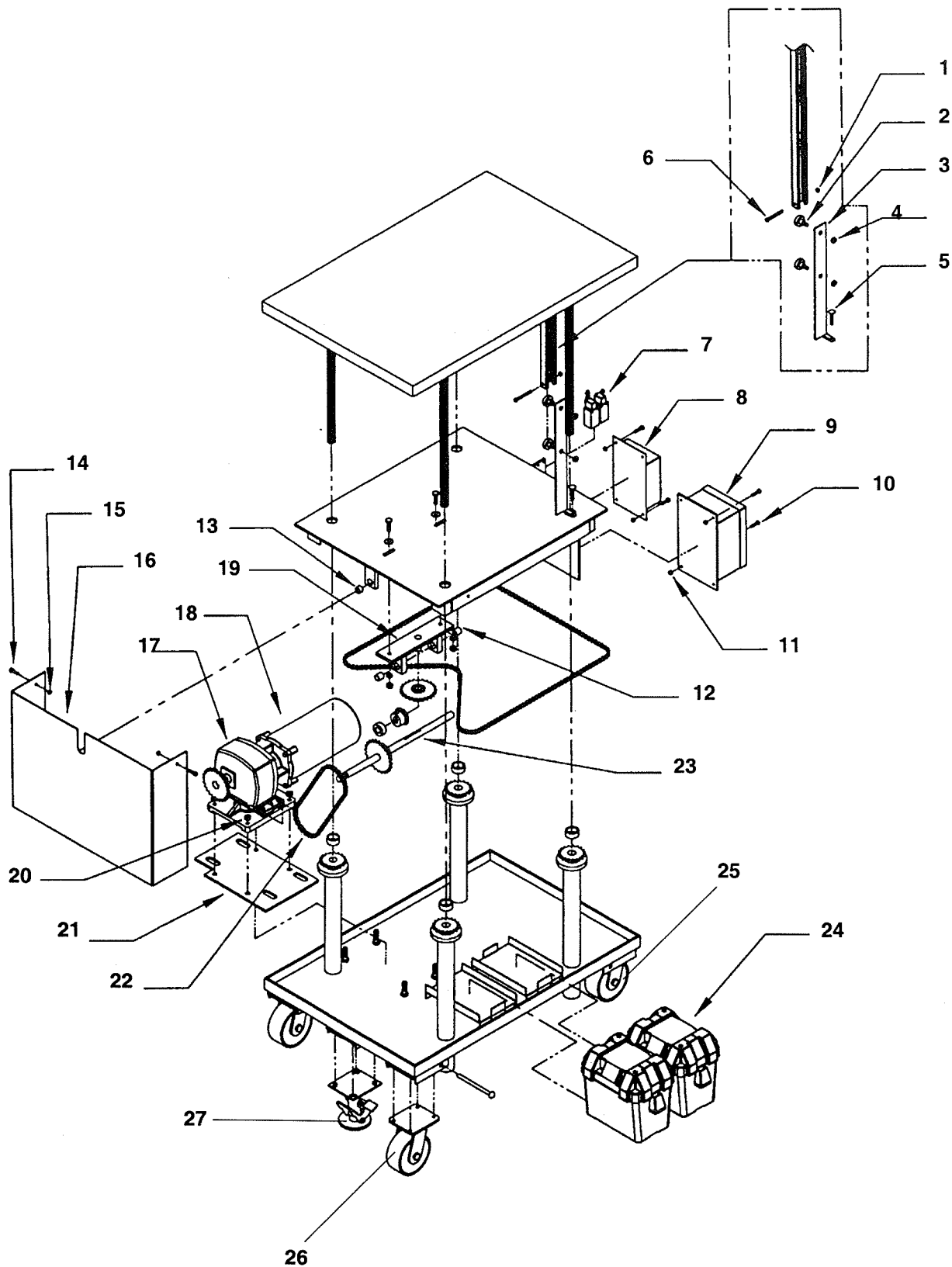
**E
N
G
L
I
S
H**

KIT NO.	ITEM NO.	DESCRIPTION	ENGINEER NO.	PART NO.	QTY.
A	1	Carriage Bolt, 3-1/8"-16 x 5"	a/k	a/k	5
	2	5" x 2" Poly Rigid Caster	16-132-022	MT-5X2PRC	2
	3	5" x 2" Poly Swivel Caster	16-132-053	MT-5X2PSC	2
	4	Crank Handle	16-025-024	MT-CH1	1
A	5	Nylock Hex Nut, 3/8"-16	a/k	a/k	5
	6	Floor Lock	16-132-080	MT-FL	1
	7	Hardware Kit (includes 1 & 5)	21-154-004	MT-KITA	1

a/k Available only with purchase of kit

PARTS IDENTIFICATION

MECHANICAL POST TABLE DC POWER • MODEL MT-DC



PARTS IDENTIFICATION

MECHANICAL POST TABLE DC POWER • MODEL MT-DC

ITEM NO.	DESCRIPTION	ENGINEER NO.	PART NO.	QTY.
1	1/4 - 20 UNC Hex Nut	36102	MTDC-HXNT	1
2	Bearing, Roller (SWA-48 PMO)	20-110-008	MTDC-BRLR	2
3	Travel Bar Locator Weldment	21-516-004	MTDC-TBLW	1
4	5/16 - 18 UNC Lock Nut	37021	MTDC-LN516	2
5	Elevator Bolt 1/4 x 20 x 1-3/4 lg.	22805 (Fastenal)	MTDC-EVBLT	1
6	HHCS 1/4-20 UNC x 2-1/2 lg.	11013	MTDC-11013	1
7	Roller Arm Limit Switch	01-022-001	MTDC-RALS	2
8	Guest Battery Charger	21-034-001	MTDC-GBC	1
9	6 x 8 Control Box	01-029-007	MTDC-CB68	1
10	1/4 - 20 UNC x 1 lg.	11005	MTDC-11005	4
11	1/4 - 20 UNC Hex Nut	36102	MTDC-HXNT	4
12	Bushing Sleeve 3/4 x 3/4 lg.	01-111-009	MTDC-BS34	2
13	Bushing Sleeve 3/4 x 1/2 lg.	01-111-008	MTDC-BS12	1
14	1/4 - 20 UNC x 1 lg.	11005	MTDC-11005	2
15	1/4 - 20 UNC Hex Nut	36102	MTDC-HXNT	2
16	Safety Shroud, Chain Cover	21-024-020	MTDC-SSCC	1
17	Reducer, Hub city (SWA-48)	20-141-002	MTDC-HCR	1
18	DC Motor (1 hp) (PEL-400)	21-641-001	MTDC-DCMTR	1
19	Brkt. Weldment, Tension Adj.	21-516-005	MTDC-TAWB	1
20	1/2 x 13 UNC Hex Nut	36109	MTDC-36109	4
21	Brkt. Motor Base	21-016-064	MTDC-MTRBS	1
22	Chain RC-41 (MT-2436)	21-042-001	MTDC-CHAIN	1
23	ShaftGear	21-026-005	MTDC-SFTGR	1
24	Battery (w/case) (PEL-400)	21-139-002	MTDC-BAT	2
25	Rigid Caster 5" x 2"	16-132-022	MTDC-5X2PRC	2
26	Swivel Caster 5" x 2"	16-132-021	MTDC-5X2PSC	2
27	Floor Lock	16-132-080	MTDC-FL	1

E
N
G
L
I
S
H

Battery Charger Operating Instructions

Bench Top Style Battery Charger

(for DC models equipped with our Bench Top Charger)

WARNING!

Working with or near lead acid batteries is dangerous. Batteries contain sulfuric acid and produce explosive gases. A battery explosion could result in loss of eyesight or serious burns.

Do not smoke or allow a spark or flame near batteries. Charge batteries in locations which are clean, dry, and well ventilated. Do not lay tools or anything metallic on top of any battery. All repairs to a battery must be made by experienced and qualified personnel.

When working with batteries, remove personal items such as rings, bracelets, necklaces, and watches. A battery can produce enough voltage to weld jewelry to metal causing a severe burn.

Always have plenty of fresh water and soap nearby in case battery acid contacts skin, clothing, or eyes.

Operating the battery with a low battery voltage can cause premature motor contact failure.

OPERATING INSTRUCTIONS

Even if you did not purchase an optional battery charger, your new *Mechanical Post Table* has been fitted with a matching plug which will connect directly to the *Bench Top Charger* we offer. Contact your distributor if you wish to purchase a battery charger.

DO'S AND DON'TS

DO NOT leave charger connected for an indefinite length of time.

DO NOT smoke, strike a match or cause a spark in the vicinity of battery during charging.

DO make sure all battery connections are tight and clean.

DO NOT expose to rain or adverse conditions.

DO replace defective cords and wires immediately.

DO locate charger at least 24" above floor while charging.

DO NOT overcharge battery (*manual* position only)

Board Style Battery Charger

(for DC models equipped with our On Board Charger)

WARNING!

Same as Bench Top Style Charger.

Our *On Board* charger is equipped with an external ground wire (small green). During installation the charger must be grounded to the equipment which it is connected to. Be sure this wire is always connected to the chassis, frame, or other metallic surface considered to be ground.

OPERATING INSTRUCTIONS

- 1.) Plug charger into a receptacle known to have approx. 115V and 60 Hz. If an extension cord must be used, keep it short and as large as possible. A small cord will decrease the output of the charger due to the voltage drop in the line. This will increase the charging time.
- 2.) When properly connected, the charge LED will indicate the status of charge current flowing to the battery.
- 3.) With only the red LED lit, the charger is providing full output to the battery. With both the red and green LED's lit the charger is "topping off" the battery. When only the green LED is on, the unit is providing a "float" or maintenance, charge.
- 4.) Remember to unplug the charger before moving equipment. Failure to do so could cause damage to cords, receptacles and other equipment.

ADDITIONAL INFORMATION

The *On Board* charger is current limited and will not exceed its rated output, even if loads are placed on the battery while the battery is charging.

The *On Board* chargers fuse will blow if the charger is connected in reverse polarity.

TROUBLESHOOTING

- 1) Make sure battery connections are electrically and mechanically sound.
- 2) Check AC source for power.
- 3) Check fuse. Replace only with a fuse having the same rating as originally supplied.
- 4.) Check battery condition. A highly sulfated battery may take some time before current begins to flow through it.

DO'S AND DON'TS

DO NOT leave charger connected for an indefinite length of time.

DO NOT smoke, strike a match or cause a spark in the vicinity of battery during charging.

DO make sure all battery connections are tight and clean.

DO NOT expose to rain or adverse conditions.

DO replace defective cords and wires immediately.