

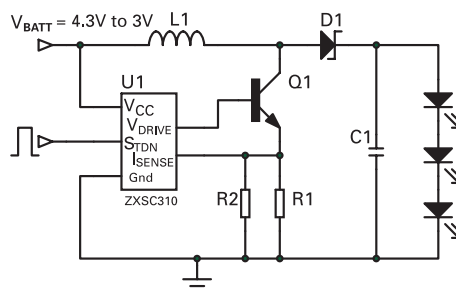
Design Note 62

ZXSC310 Solution to drive 3 LEDs connected in series

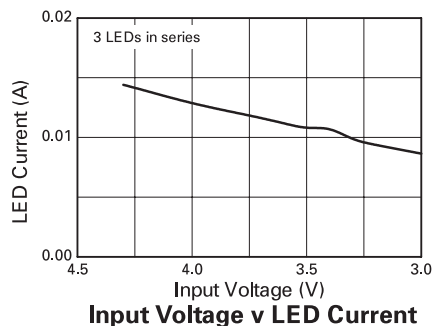
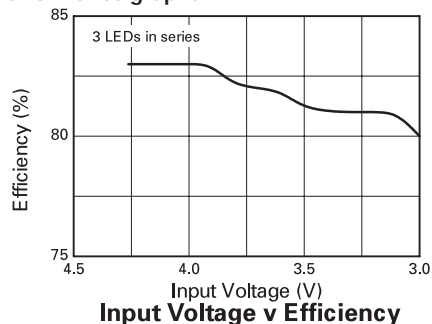
Aim

This solution is optimized for an input voltage range of 4.3V to 3V. The LED current is set to 15mA $V_{IN} = 4.3V$ and 8mA at $V_{IN} = 3V$.

Circuit diagram



Performance graphs



Bill of Materials

Reference	Part No.	Value	Manufacturer	Contact Details
U1	ZXSC310E5	N/A	Zetex	www.zetex.com
Q1	FMMT618	N/A	Zetex	www.zetex.com
D1	ZHCS1000	1A	Zetex	www.zetex.com
R1	Generic	510mΩ	Generic	
R2	Generic	510mΩ	Generic	
C1	Generic	2.2μF	Generic	
L1	DO1608P-103	10μH	Coilcraft	www.coilcraft.com
LED1-3	NSPW500BS	White LED	Nichia	www.nichia.com

Design Note 62

ISSUE 2 - MARCH 2004

© Zetex plc 2004

Europe	Americas	Asia Pacific	Corporate Headquarters
Zetex GmbH Streitfeldstraße 19 D-81673 München Germany	Zetex Inc 700 Veterans Memorial Hwy Hauppauge, NY 11788 USA	Zetex (Asia) Ltd 3701-04 Metroplaza Tower 1 Hing Fong Road, Kwai Fong Hong Kong	Zetex plc Fields New Road, Chadderton Oldham, OL9 8NP United Kingdom
Telefon: (49) 89 45 49 49 0 Fax: (49) 89 45 49 49 49 europe.sales@zetex.com	Telephone: (1) 631 360 2222 Fax: (1) 631 360 8222 usa.sales@zetex.com	Telephone: (852) 26100 611 Fax: (852) 24250 494 asia.sales@zetex.com	Telephone (44) 161 622 4444 Fax: (44) 161 622 4446 hq@zetex.com

These offices are supported by agents and distributors in major countries world-wide.

This publication is issued to provide outline information only which (unless agreed by the Company in writing) may not be used, applied or reproduced for any purpose or form part of any order or contract or be regarded as a representation relating to the products or services concerned. The Company reserves the right to alter without notice the specification, design, price or conditions of supply of any product or service.

For the latest product information, log on to www.zetex.com

