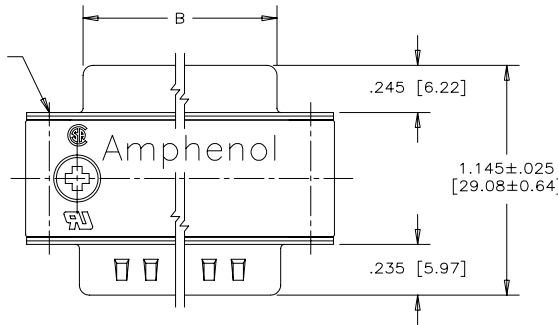


REVISIONS			
REV	ECN, ERN NO.	DATE	APPRD.
B	PRODUCT DRAWING (EAR 12900)	JAN23/06	K.L.

MOUNTING CODE 4
4-40 UNC THREAD
OR
MOUNTING CODE 6
M3 x 0.5 THREAD
X .240 [6.10] MIN.
DEEP (4 PLACES)



ORDERING CODE: F C E 1 7 - B 2 5 A D - 4 0 0 G

SERIES
FCE17=FILTERED D-SUB, RoHS

SIZE/NUMBER OF CONTACTS
E09, A15, B25, OR C37

CONNECTOR STYLE
AD=PIN/SOCKET ADAPTER

MOUNTING
2=.120 [3.05] DIA. THROUGH HOLE
WITH #4-40 MOUNTING POST
4=#4-40 UNC THREAD
6=M3 x 0.5 THREAD

CONTACT FINISH/GOLD THICKNESS
NO DIGIT=STANDARD 15 MICROINCHES
[0.38 MICRONS] GOLD ON
MATING AREA

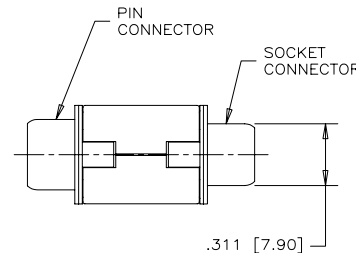
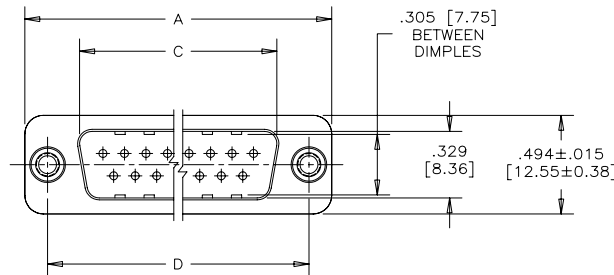
G=50 MICROINCHES [1.27 MICRONS]
GOLD ON MATING AREA

MODIFIER
O=STANDARD

FILTER CAPACITANCE

D=50 pF 5=1000 pF
B=100 pF 7=1200 pF
O=180 pF J=1500 pF
F=330 pF E=2200 pF
L=380 pF 9=5600 pF
1=470 pF 8=47000 pF
4=820 pF N=NO FILTERS

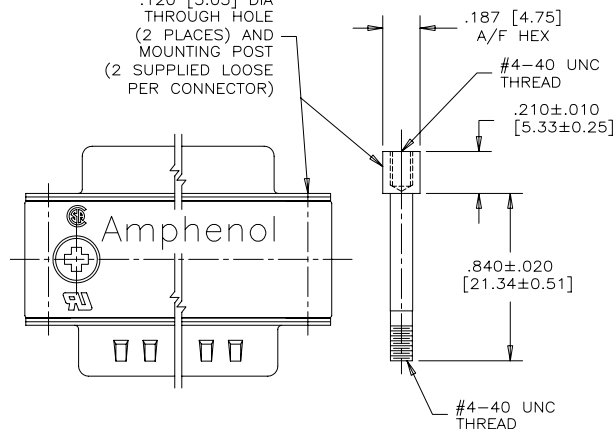
REFER TO AMPHENOL CATALOGUE
FOR FILTER PERFORMANCE
CHARACTERISTICS



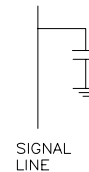
NOTES:

- MATERIALS: — ALL MATERIALS ARE RoHS COMPLIANT
— SHELLS: TIN PLATED STEEL
— CONTACTS: PHOSPHOR BRONZE
PLATED WITH GOLD OVER 50μ" [1.27 MICRONS]
NICKEL ON MATING AREA.
— INSULATOR: ENGINEERING THERMOPLASTIC, GLASS
REINFORCED, FLAMMABILITY RATING UL94V-0, BLACK.
— OUTSIDE SHELLS: ZINC DIECAST, NICKEL PLATED
— MOUNTING HARDWARE: STEEL OR COPPER ALLOY,
TIN OR NICKEL PLATED
- CONTACT RESISTANCE: 30 MILLIOHMS MAXIMUM
- INSULATION RESISTANCE: 3000 MEGOHMS MINIMUM
- CURRENT RATING: 5 AMPS MAXIMUM
- OPERATING TEMPERATURE: -40°C TO 85°C.
- TOLERANCE, UNLESS INDICATED OTHERWISE, ±.005 [0.13].

MOUNTING CODE 2
.120 [3.05] DIA
THROUGH HOLE
(2 PLACES) AND
MOUNTING POST
(2 SUPPLIED LOOSE
PER CONNECTOR)



CAPACITANCE SCHEMATIC
FOR EACH POSITION



SIZE	A±.015 [0.38]	B±.005 [0.13]	C±.005 [0.13]	D±.005 [0.13]
E09	1.213 [30.81]	.643 [16.33]	.666 [16.92]	.984 [24.99]
A15	1.541 [39.14]	.971 [24.66]	.994 [25.25]	1.312 [33.32]
B25	2.088 [53.04]	1.511 [38.38]	1.534 [38.96]	1.852 [47.04]
C37	2.729 [69.32]	2.159 [54.84]	2.182 [55.42]	2.500 [63.50]

DRAWN S.BUENAVIDES	DATE DEC08/05
DESIGNED	
CHECKED K.LAMBIE	DEC08/05
I. E. APPRD.	
Q. A. APPRD.	
DWG. APPRD.	
ENG. REL. NO.	
REF. EAR 12888	
DIMENSIONS ARE IN INCHES [mm]	CODE ID. NO. 03554

Amphenol Canada Corp.

FCE17 SERIES FILTERED D-SUB
CONNECTOR, MALE/FEMALE
ADAPTER, RoHS COMPLIANT

DWG	DRAWING NO.	REV.
C	P-FCE17-XXXAD-XX0X	B
SCALE 2/1	WT. -----	SURF. -----
SHEET 1 OF 1		

THIS DOCUMENT CONTAINS PROPRIETARY INFORMATION AND SUCH INFORMATION
MAY NOT BE DISCLOSED TO OTHERS FOR ANY PURPOSE OR USED FOR MANUFACTURING
PURPOSES WITHOUT WRITTEN PERMISSION FROM AMPHENOL CANADA CORP.