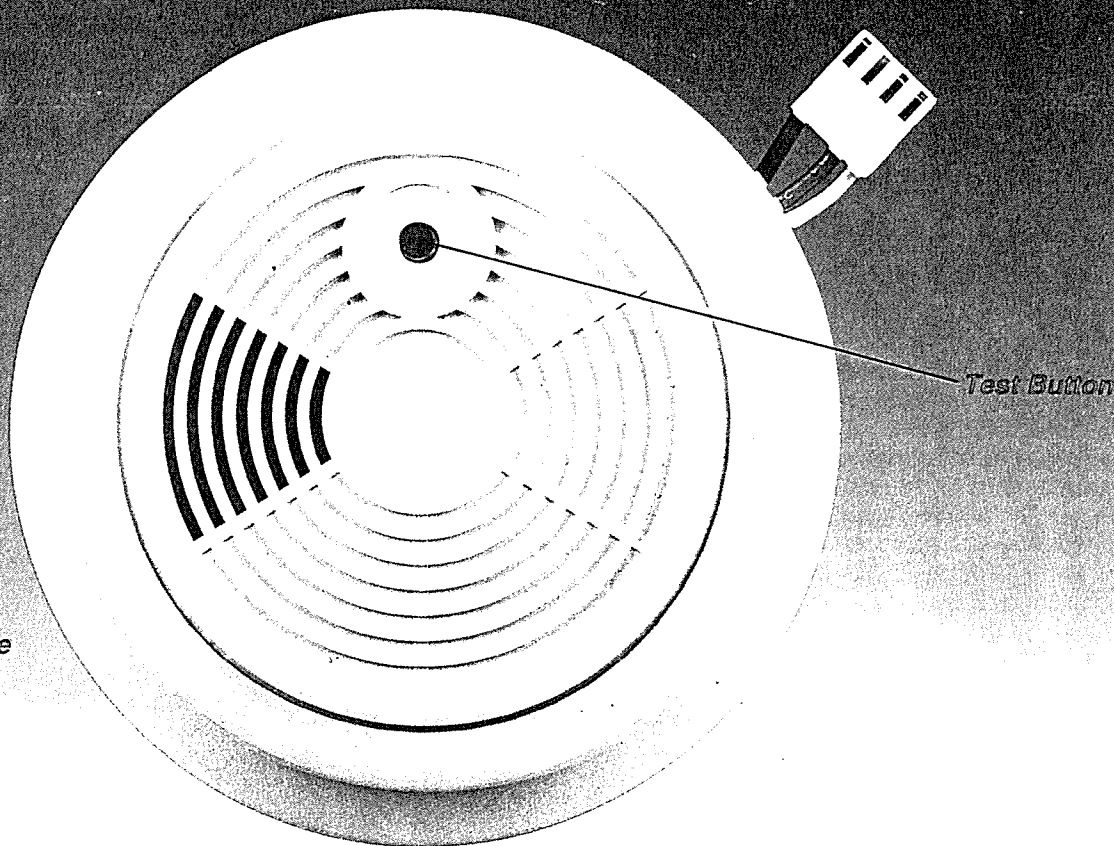


BRK ELECTRONICS

New Compact Design!

Model 4919 **AC POWERED DUAL IONIZATION** **INTERCONNECTABLE SMOKE DETECTOR**

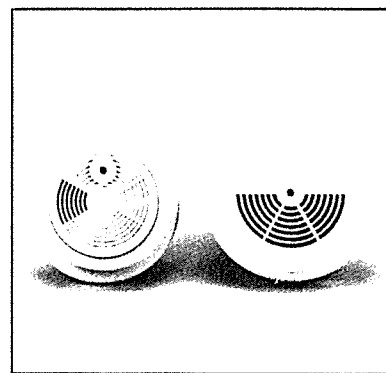


Shown In Actual Size



Contractors Asked For It. . . .

- New smaller, compact size! Smaller design fits to any standard junction box up to 4" octagon.
- New "ceiling white" color! Detector is less noticeable to homeowners and more attractive when mounted.
- New plug-in connector installs quickly. Cuts installation time and cost!
- New design eliminates the need to install a gasket. Fewer parts make installation quicker and easier!
- New mounting bracket has large opening for feeding wires. No more struggling to get wires through a small opening!

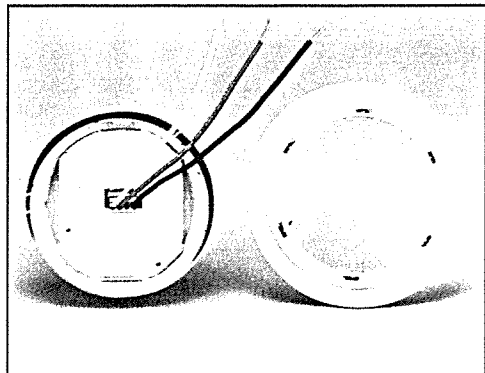


Model 4919 shown with BRK model 1839 for size comparison.

NAED NUMBER: 50940
MASTER PACK: 12

4919

AC Powered Dual Ionization Interconnectable Smoke Detector



Description

BRK's Model 4919 is a 120VAC powered ionization smoke detector designed for both single and multiple station use, up to 12 units. Its small, compact design and white color make it easier to handle and more attractive in new homes. The dual ionization sensor keeps false alarms to a minimum. The detector has its own 85 dB electronic alarm horn, power on LED, and test switch. It is interconnectable and comes with a plastic bracket that mounts easily to any standard junction box up to 4" octagon. Model 4919 comes with a plug-in connector for easy installation.

Model 4919 is designed so that when an interconnected system sounds its alarm horns, the detector sensing smoke will turn off its LED while other interconnected detectors LEDs remain on. NOTE: All interconnected units must receive power from the same fuse or breaker.

Features

- Small, compact size.
- "Ceiling white" color.
- Easy, plug-in connector for wiring.
- Mounting bracket has large opening for feeding wires.
- New design eliminates the need for a gasket.
- Stainless steel chamber.
- Powered directly from 120VAC, 60 Hz.
- Loud 85 dB alarm horn.
- Solid state power-on indicator lamp (LED).
- Insect-resistant screen minimizes nuisance alarms.
- Interconnectable - up to 12 units.
- Mounts to any box up to 4" octagon size and does not require screw removal.
- Listed to UL 217 and meets FCC Standard for lightning protection.
- Special shielding for RF immunity.

Technical Specifications

Alarm Circuit - 100% solid state.

Detector Dimensions - 4.3" diameter, 1.75" height.

Color - Ceiling white.

Operating Temperature Range - 40° to 100° F (4° to 38° C).

Humidity Range - 10% to 90% Relative Humidity.

Alarm Horn - 85 dB at 10 feet.

Indicator Lamp - Solid State LED.

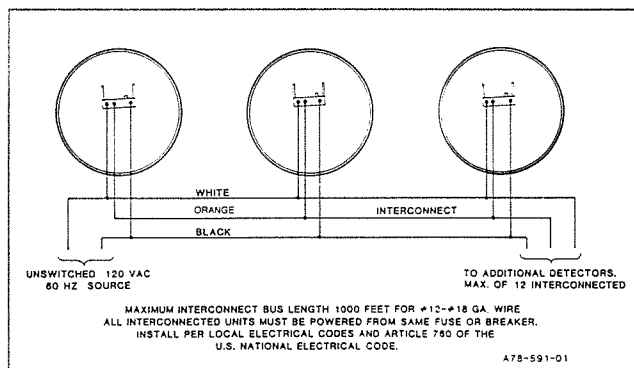
Test Switch - Electronically simulates the presence of smoke and tests all detector functions.

Operating Voltage - 120VAC, 60 Hz.

Alarm Reset - Automatic when smoke clears.

Weight - 5.2 oz

Power Consumption - Alarm and Standby .060A Maximum.



Sample Specifications

The smoke detector shall be powered by a 120VAC, 60 Hz power source and shall be listed at .060A max in standby condition. The detector shall have a solid state dual chamber ionization sensor. The sensor shall be protected by an insect-resistant screen. The detector shall be capable of operating between 40° and 100° F (4° - 38° C) and relative humidity between 10% and 90%. A built-in test switch shall electronically simulate the presence of smoke and test all detector functions. A built-in power on indicator light shall glow when the detector is receiving AC power. The detector shall have an electronic alarm horn that is a minimum of 85 dB. It shall be capable of being mounted to any box up to 4" octagon size. It shall have a plug-in connector and be capable of interconnection with eleven other identical units. The detector shall be listed to UL 217. The smoke detector shall be a BRK Model 4919 or equal.

Manufactured by
BRK Brands, Inc.
780 McClure Road
Aurora, Illinois 60504-2495

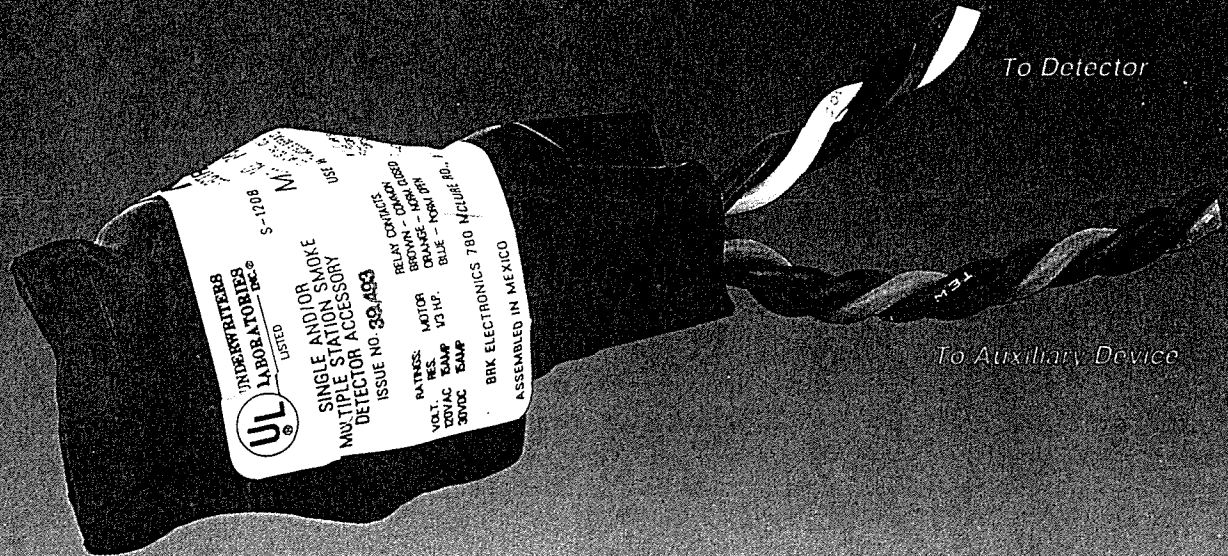
Distributed by:

For Technical Help or Representative
Nearest You Phone: 1-800-323-9005

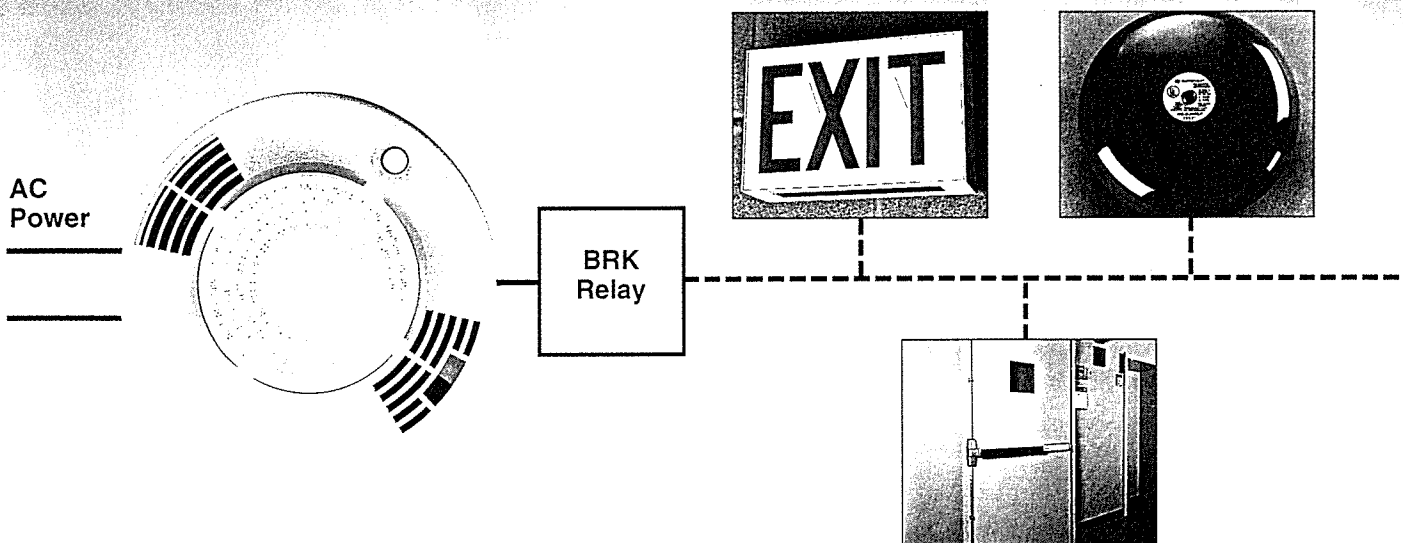
BRK ELECTRONICS

Model RM3 RELAY MODULE

Connects BRK Smoke Detectors with Auxiliary Devices



- Relay has Form C contacts that switch between a normally open contact and a normally closed contact when the detector alarms.
- Fits into any junction box.



NAED NUMBER: 17500
MASTER PACK: 12



RM3

Relay Module

General Description

This accessory relay is designed to be used to activate auxiliary devices such as bells, lights, door closers, etc., when used with BRK 5919 and 4919 series 120VAC powered residential smoke detectors. The relay contacts will activate whenever the detector sounds an alarm and will automatically deactivate when the detector stops alarming.

Specifications

RELAY CONTACT

CONTACT RATINGS: (MAXIMUM)

VOLTAGE	RESISTIVE	MOTOR
120 VAC	15 AMP	1/3 H.P.
30 VDC	15 AMP	

Installation

To install this relay to a BRK Smoke Detector Model 5919 or 4919, connect the power wires as listed below. (If wiring the relay remote from the detector, use a maximum of 1000 feet of #18AWG or larger wire rated at least 300V.):

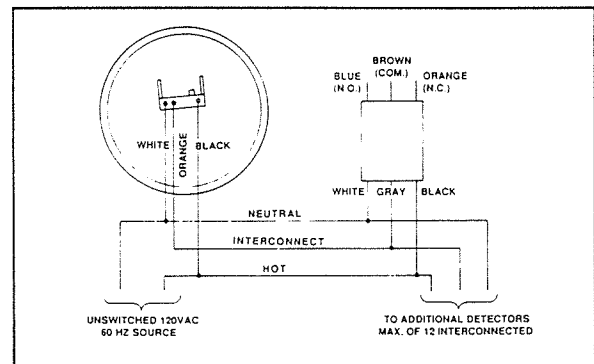
DETECTOR		RELAY
BLACK WIRE	(HOT)	BLACK WIRE
WHITE WIRE	(NEUTRAL)	WHITE WIRE
ORANGE WIRE	(INTERCONNECT)	GRAY WIRE

IMPORTANT: Orange wire from detector must be connected to gray wire from relay.

Now connect the accessory to be activated by the relay to the relay's switch contact wires as listed below. (Use wiring appropriate to the auxiliary device being controlled):

BROWN WIRE:	COMMON CONTACT
ORANGE WIRE:	NORMALLY CLOSED CONTACT
BLUE WIRE:	NORMALLY OPEN CONTACT

After connection, place the relay inside a junction box, either where the detector is installed or at a remote location with a proper box cover.



Manufactured by
BRK ELECTRONICS
780 McClure Road
Aurora, IL 60504-2495

Distributed by:

For Technical Help or
Representative Nearest You
Phone: 1-800-323-9005