



Our Products



Cable Safety



Dropped Objects Prevention



Confined Space Safety



Who we are



CableSafe is part of Westmark, a specialized engineering company. Our company consists of a group of Engineers with 40+ years of hands-on operational experience in the Oil & Gas, Chemical, Construction and Power Generation industry. We manufacture most of our safety products ourselves in the EU and some in North America reliability and quality.

Westmark started in 1991 as a manufacturer of CableSafe Safety Hooks. We specialize in Cable Safety, Confined Space Safety and Dropped Objects Prevention.

Locations: The Netherlands and USA





Cable Safety

CableSafe is powered by Westmark

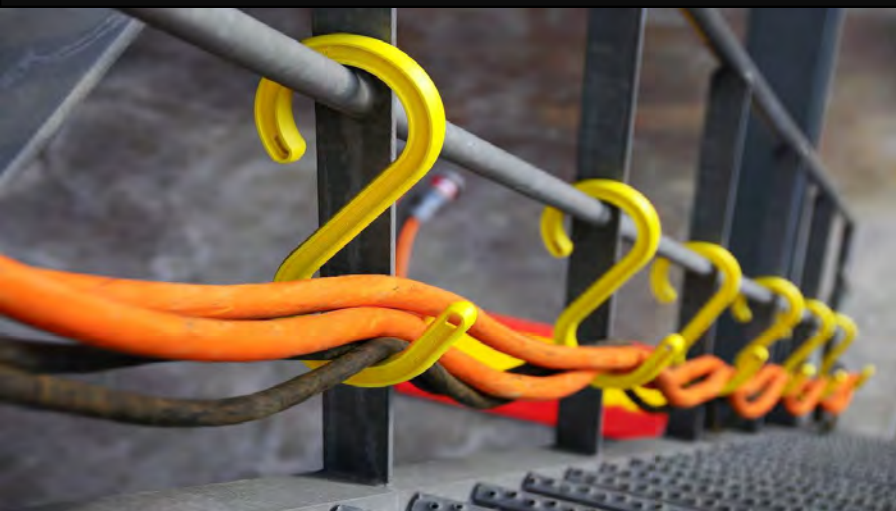


+31.33.4614844





info@cablesafe.com

Safety Hook (S-Hook)



Safety Hook Extreme designed for use in extreme environments. The extreme Hook is UV stabilized, Flame Retardant and Cold Weather Rated. The Safety Hook Extreme is marked: UV+FR+COLD.



	6"	9"	12"	15"
Size cable opening (top)	1.1" = 2.7 cm	1.5" = 3.9 cm	2.1" = 5.4 cm	2.5" = 6.4 cm
Size cable opening (bottom)	1.6" = 4.0 cm	2.6" = 6.6 cm	3.5" = 8.9 cm	4.5" = 11.4 cm
Maximum load	40 kg – 88 lbs	55 kg – 121 lbs	190 kg – 418 lbs	265 kg – 584 lbs
Weight	40 gram – 0.06 lbs	103 gram – 0.23 lbs	292 gram – 0.64 lbs	518 gram – 1.14 lbs
Material	Glass reinforced polyester – injection molded product			
Standard Color	 Yellow  Glow-in-the-dark			
UV	Stabilized, guarantee 10 years - under normal usage conditions			
Flame Retardant	Flame Retardant, UL Recognized, 94V-0 Flame Class Rating (3)			
Cold Fatigue	Protection in cold weather environment			



Safety Hook Range Extender



Characteristics

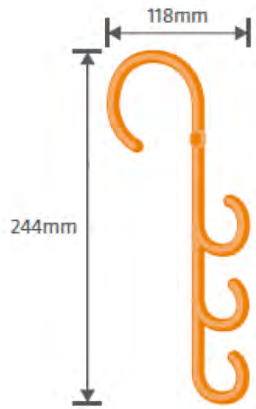
- Length: 1,60 meter
- Extended length: 3 meter
- Weight: 1,3 kgs
- Height up to 5 meter



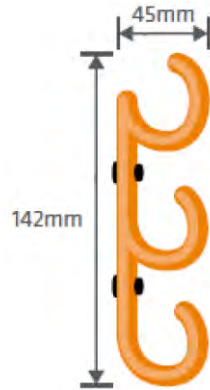
Safety Hook Light



Safety Hooks Light Hanger



Safety Wall Hooks



Safety Patches



Safety Hook Light Hanger

- Designed to be hung from scaffolding, cable trays, ceiling
- Ideal for holding up temporary lighting
- Holds 9 x 110v artic cable
- Can also be fixed to walls
- Working temperature -20°C - 60°C
- Max load 5 kg

Safety Wall Hooks

- Perfect for long corridors and creating drop down points
- Use on walls and ceilings
- Working temperature -20°C - 60°C
- Max load 10 kg

Safety Patches

- Can hold up to 6 x 110v artic cables
- No tools required to fit
- Working temperature -20°C - 60°C
- Options: - Grade 1; unfinished surfaces
- Grade 2; finished surfaces
- Magnetic



Cable Guard



Characteristics

- Polyurethane: lightweight design for heavy duty use
- Lighter, stronger and more durable than comparable products
- Identical size allows progressive upgrade for existing customers
- Connecting System: integrated male-female allowing cable guards to any length desired
- Inbuilt carry handle makes the heavy duty cable guards easy to carry one cable guard in each hand

Specific Models



2 channel



3 channel small



3 channel

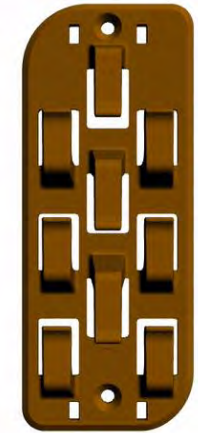
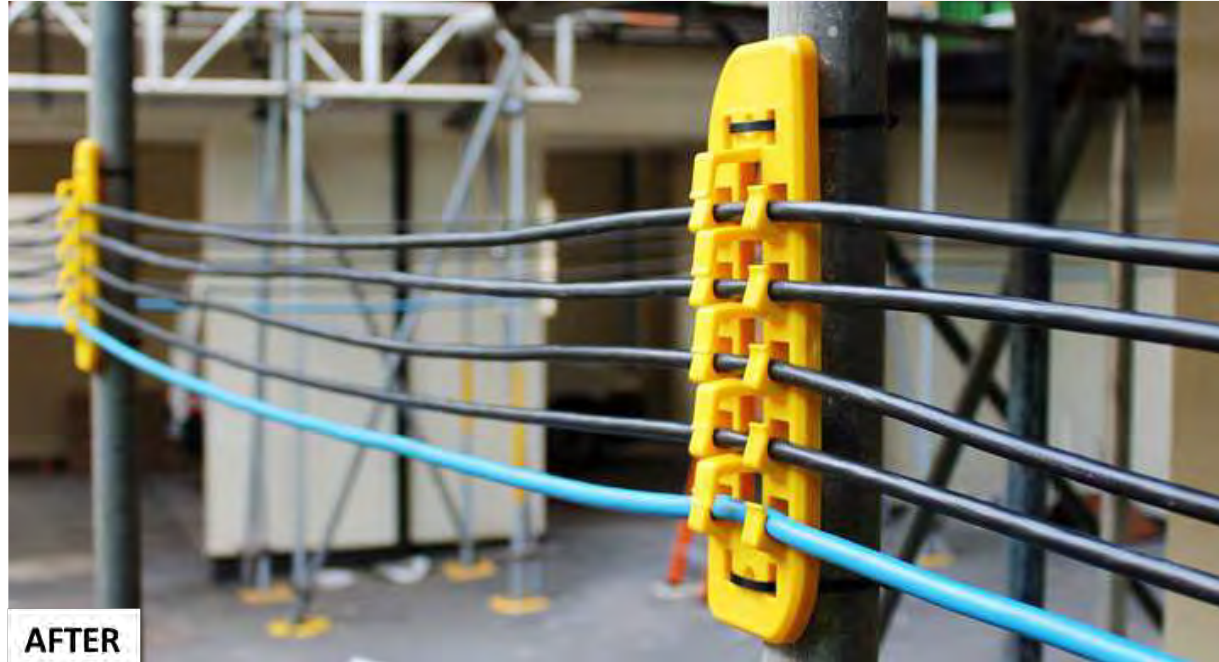


5 channel

Material	Non-conductive, UV stabilized polyurethane			
Dimensions (mm)	(l)1000x(w)250x(h)45	(l)900x(w)300x(h)45	(l)900x(w)500x(h)75	(l)900x(w)500x(h)50
Weight (kg)	4 kg	5.4 kg	12.7 kg 35% lighter than rubber version	9.8 kg 40% lighter than rubber version
Channel Dimensions (mm)	(w)35x(h)30	(w)30x(h)35	(w)65x(h)55	4 channels: (w)34x(h)36 1 center: (w)40x(h)36
Weight loading NATA laboratory, tested per tire for 5 minutes	4T	8T	6T	6T
Laboratory Fail Load	6.1T	13.1T	8.3T	11T



Cable Rail



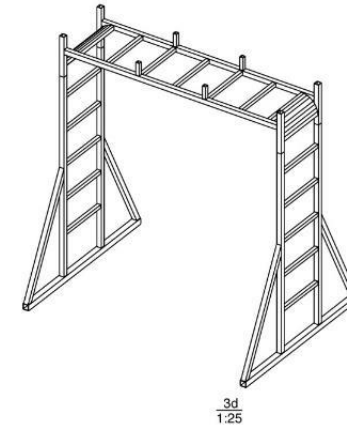
Heavy duty available

Characteristics

- Cable Rail is an innovative, patent protected system for the management of temporary or semi-permanent cables
- Easy 3-step cable loading
- Easy install with screws or cable ties
- Non-conductive
- Placed horizontal or vertical
- Material: Nylon (PA)



Cable Bridge



Characteristics

- Tested method to suspend cables and wires
- Provide a clean walkway or work location
- Holds up to 500 kg cable weight – tested with 1.000 kg
- Material: constructed with standard steel
- Powder coated yellow, optional hot dip galvanized for use outside
- Height 2.25 meter; 2 meter length; 1.20 meter width [7.3 x 6.5 x 3.9 ft]
- Weight approximately 85 kg [190 lbs]
- Transported on standard pallets [1.2 m x 0.8 m]
- Custom sizes available on request



Cable Stand



Characteristics

- Holds up to 250 kg / 550 lbs
- Weight: 13.5 kg / 29.5 lbs
- Comes in three parts
 1. A base: width 100cm / 3 feet
 2. Extendable pole with two levers min height 150 cm / max height 250 cm
 3. The lead grip: width 35 cm






CABLESAFE®
SIMPLICITY IN SAFETY

Dropped Objects Prevention

CableSafe is powered by Westmark

 +31.33.4614844

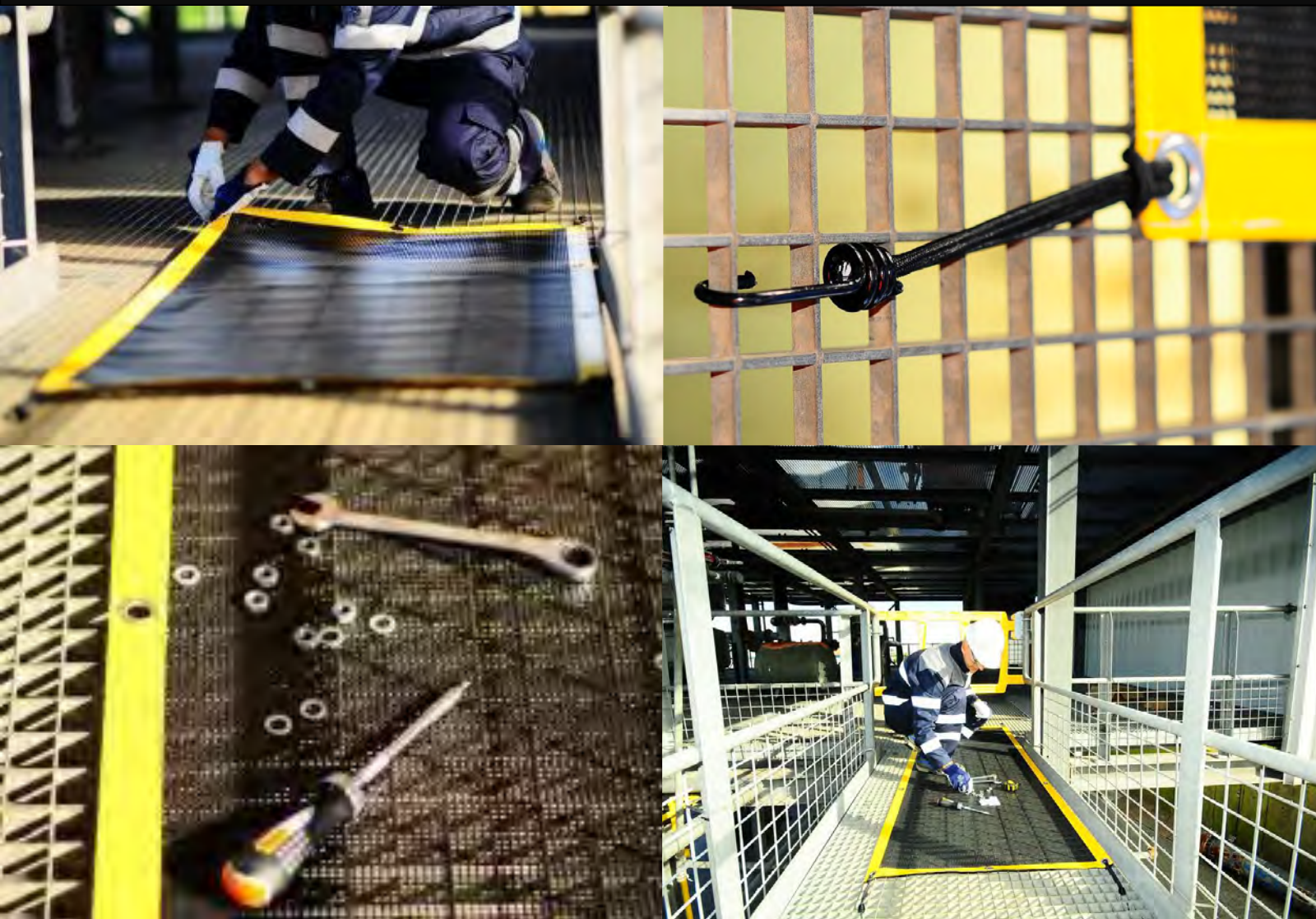
 info@cablesafe.com

Dropped Objects Prevention Work Mat

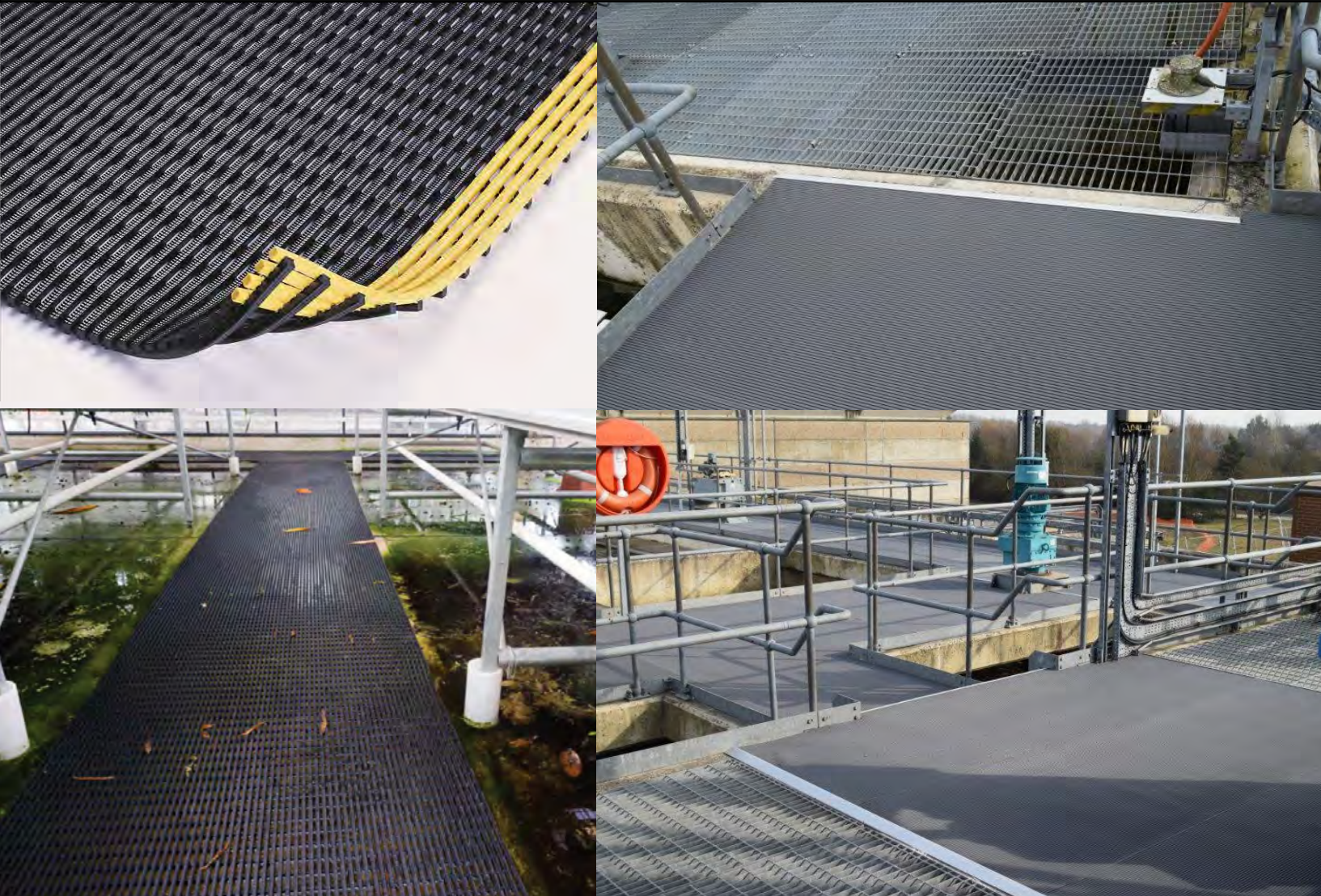


The Dropped Objects Prevention Work Mat is a tool which is used on elevated gratings. It allows personnel to store their tools on a safe mat and it will prevent dropped objects while performing these works at height.

- Coated polyester mesh fabric
- Size: 220 x 120 cm
- Strength: tensile 200N/50mm (ENISO1421/V1); tear 400N (DIN53363)
- Temperature: -20 °C + 70 °C (EN 1876-1)
- German Fabric
- Flame Retardant and Fire Resistant (double coated polyurethane welding cloth 40g) available
- Supplied with spanners or magnets



Dropped Objects Prevention Walkway Mat

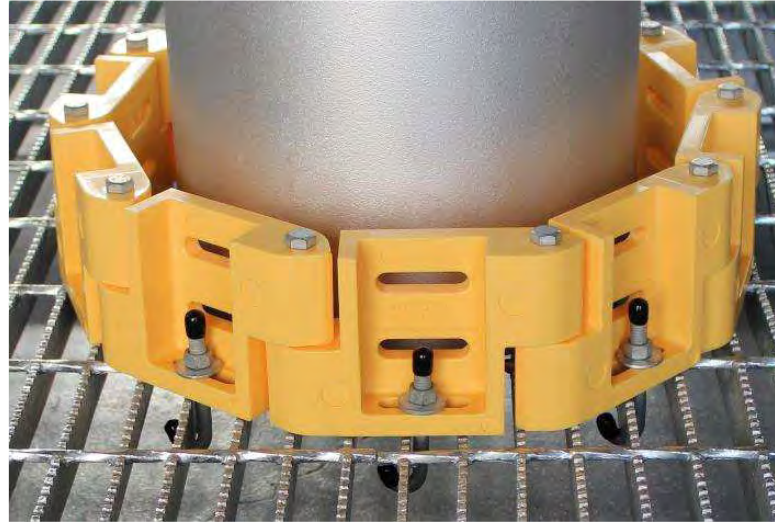


To prevent objects from falling through the gaps in elevated gratings and to prevent slips, trips and falls.

- Certified slip resistant (DIN 51130: R11)
- ASTM 1677: 1.0/0.9)
- Excellent drainage (DIN 51130: V10)
- Fire resistant (EN ISO 13501-1:2007-Cfl-SI)
- Chemical, oil and acid resistant
- UV Stabilized
- Contours to uneven surfaces



Toe Board Links

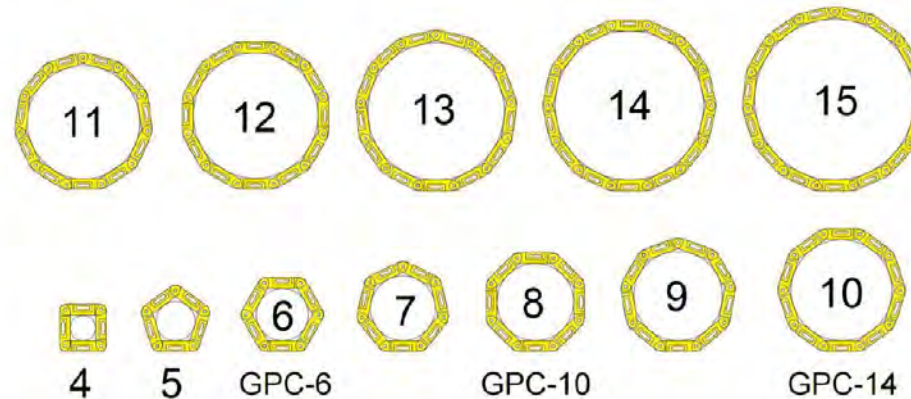


FEATURES

- Neatly enclose field cut penetrations
- Great for rework
- Eliminates the need to weld banding or split oversize pipe
- Faster on fiberglass grating
- Uniform, finished appearance



One Link (T5) To Encircle All Pipe Sizes



BENEFITS

- Safe & effective
- Maintenance free
- Long service life
- Proven design
- Provides the protection you want
- Economical



Dropped Objects Prevention Guard



Characteristics

- Independently tested and certified
- Cat 5 cyclonic tested 300KLM per hour
- 10 year warranty
- Swiss-managed, manufactured in state of the art facility
- Lightweight
- Flame resistant * Impact resistant * Chemical resistant
- UV stabilized
- Corrosion resistant in harsh environments
- Cost effective
- Permanent or temporary installations
- Reusable & recyclable polymers for a greener environment
- Fast and easy to install and remove



Dropped Objects Prevention Guard Net



Standard design

- High quality coated polyester mesh fabric
- Seam eyelets every 300 mm / appr. 1 ft in the hem at every side
- Yellow hem at every side (awareness)
- German fabric, assembled in The Netherlands
- Color fabric: black
- Corrosion resistant

Guard Net options

- Flame Retardant (FR) coated polyester mesh fabric including
- Flame retardant yellow hem at every side (awareness)
- Horizontal straps sewed in the fabric (top/middle/bottom) incl. ratchets galvanized or stainless steel
- Horizontal and vertical straps sewed in the fabric evenly distributed every 2 m (appr. 6 ft) incl. ratchets
- Galvanized or stainless steel ratchets
- Elastic spanners to tighten seam eyelets to railing or structure (every 300 mm / appr 1 ft)



Dropped Objects Prevention Safety Net Roll



Characteristics

- Fast implementation: cut, wrap and attach onsite Standard dimensions
- Stock on hand: no need / delay for custom adaptation
- Economic: between 7-12 safety nets per roll

Safe Work Loads

- Lanyard (4 mm - AISI316) – tested Safe Work Load is 215 kg (or 473 lbs)
- Safety Net Roll (2.0 mm - AISI316) – tested Safe Work Load is 37,5 kg (or 82 lbs)
- Safety Net Roll (2.5 mm - AISI316) – tested Safe Work Load is 54,6 kg (or 120 lbs)



Dropped Objects Prevention Safety Net Fit-to-size



Characteristics

- Fast implementation: Fit-to-size
- Only six different sizes to fit almost all fixtures
- Easy to install

Materials included per Safety Net

- Safety Net Fit-to-size
- Lanyard / steel securing cable (to tether to structure)
- D-Shackle (to close & secure net around fixture and secure lanyard to structure)
- Stainless steel tag

Safe Work Loads

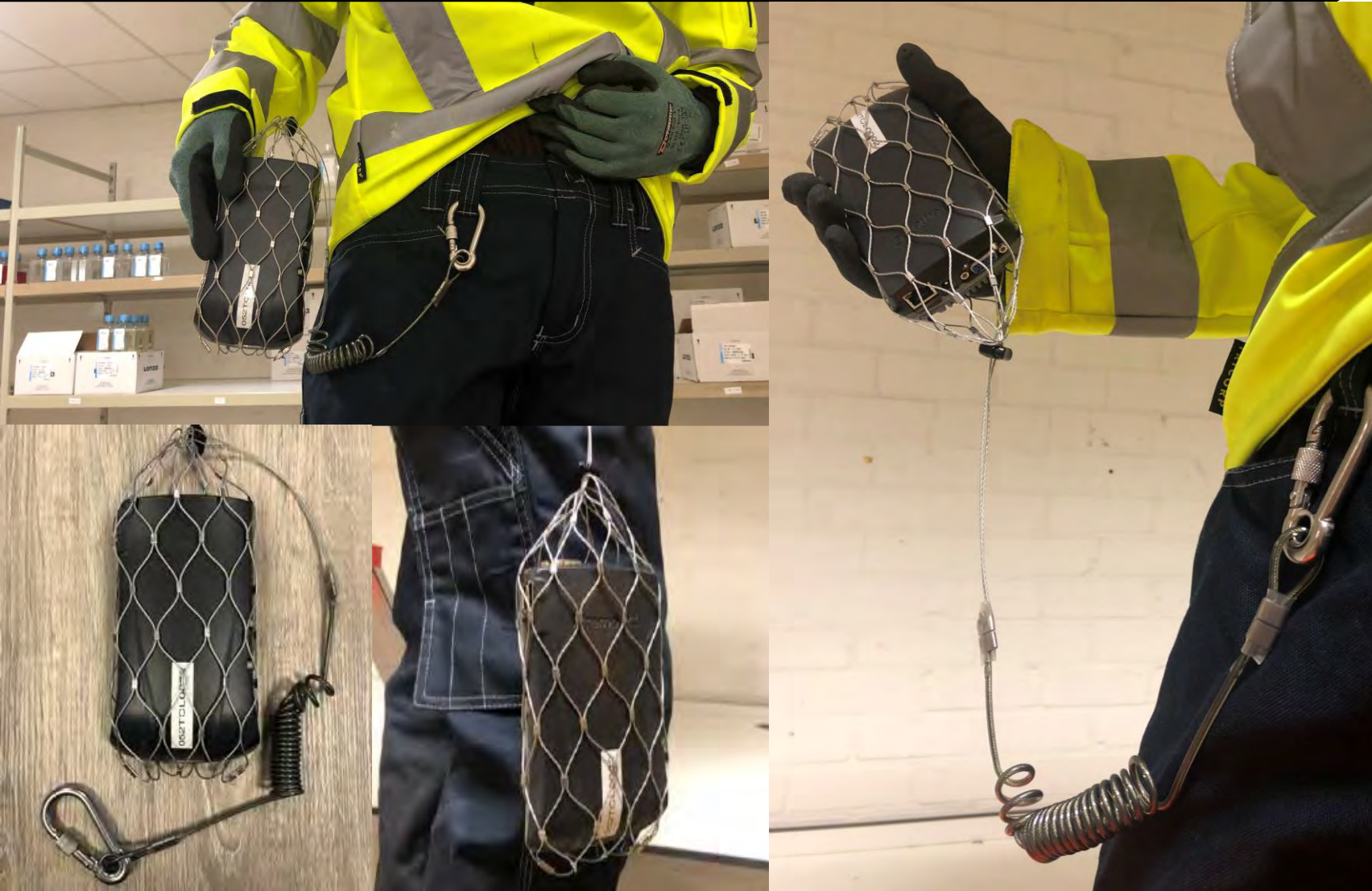
- Lanyard (4 mm - AISI316) – tested Safe Work Load is 215 kg (or 473 lbs)
- Safety Net Fit-to-size (2.5 mm - AISI316) – tested Safe Work Load is 54,6 kg (or 120 lbs)

Dropped Objects Prevention Safety Pouch



Characteristics

- High quality stainless steel PVC coated net AISI316
- Including clip to tighten the net
- Delivered as bag format that fits around the handheld item
- Including stainless steel PVC coated coil lanyard
- Items to place in the Safety Pouch:
 - Portable gas detector
 - Two-way radio (Walky Talky)
 - Multimeter
 - Other handheld items



Sharp Edges Corner Protection



Characteristics

- Color: Orange
- Dimensions: 150 x 150 mm
- Weight: 254 gr
- Traction magnet: 65 kg
- Easy to mount on wooden constructions by means of screw or nail

Benefits

- High safety level
- Clear marking
- Sustainable materials, Reusable
- Applicable to steel (magnet), wood (Screws)
- Stackable so space saving
- Temporary or permanent protection and clear marking



Fast Deployable Net Barrier



Characteristics

- 2 minutes installation
- Quick set-up in minutes by a single worker
- Carried by a single worker
- Click multiple systems together to cover large areas
- Take down without waste



Harmonica Barrier

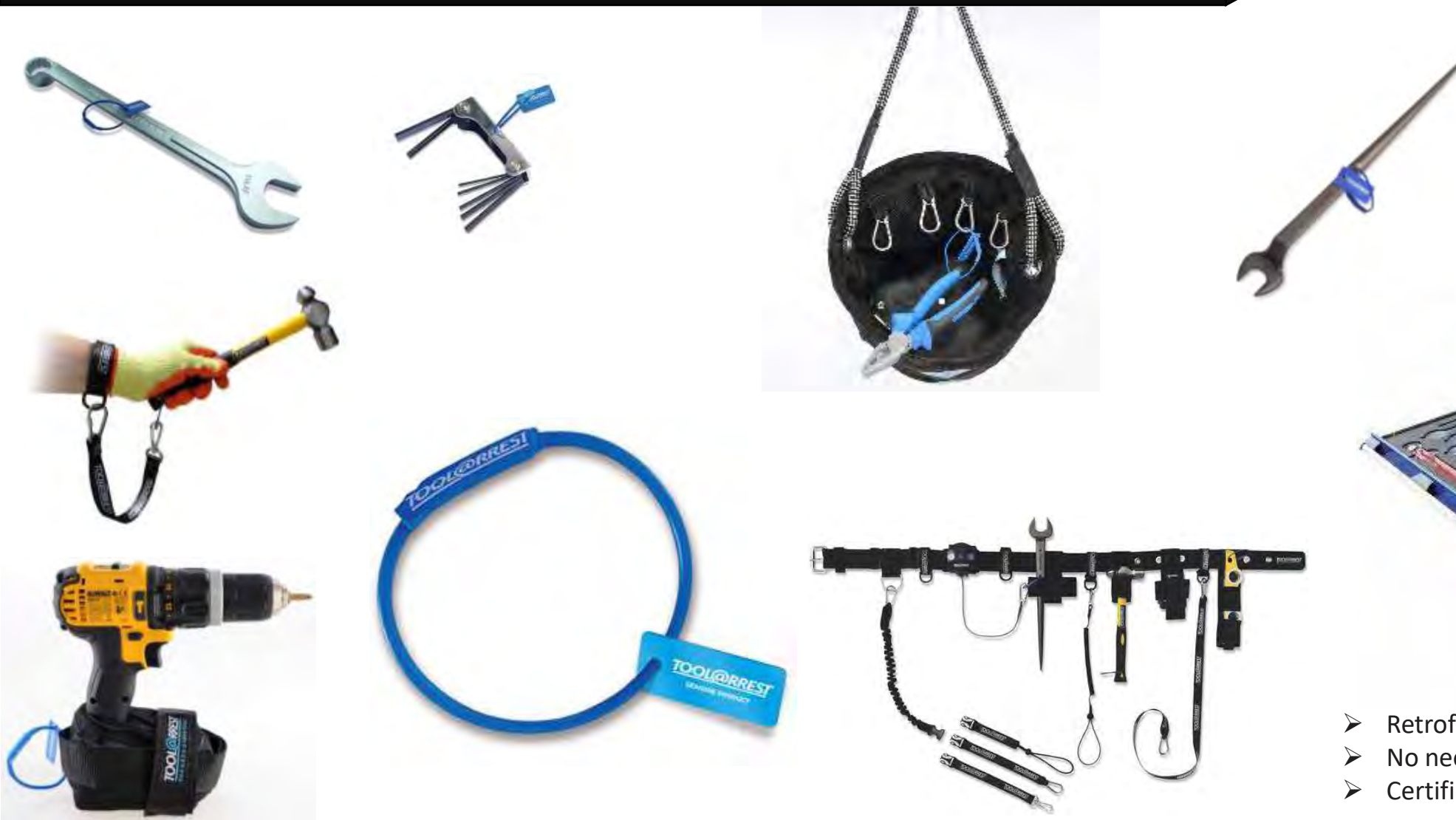


Characteristics

- Deployed in seconds
- Can be set straight, curved or in a circle
- Folds to a compact package for storage
- Bright yellow for visibility
- Easy transport with wheels and handles
- Comes completely assembled for immediate use



Certified Tether Tools



- Retrofit all tools
- No need for new tools
- Certified Tethers prevent dropped objects





CABLESAFE®
SIMPLICITY IN SAFETY

Confined Space Safety

CableSafe is powered by Westmark

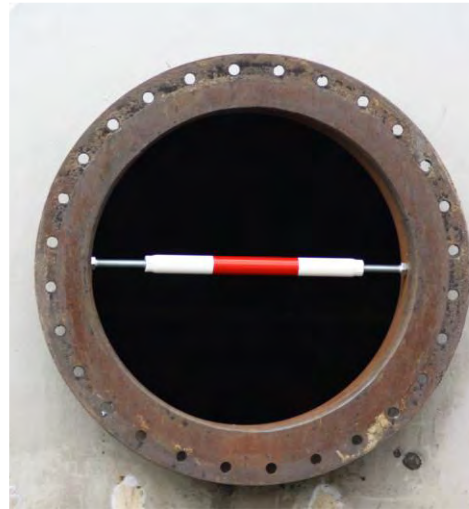


+31.33.4614844

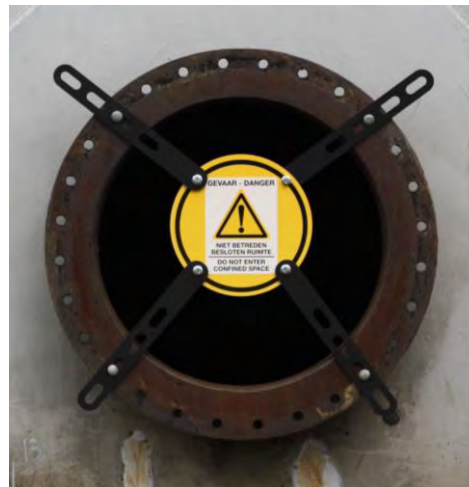


info@cablesafe.com

Confined Space Entry Protection



Our Confined Space Entry Protection Barriers are ideal for securing the entrance / exit to large storage facilities, tanks or pipes where bolts are used to secure it in place.



Self-Closing Safety Gates



Specifications

- The only polyurethane TÜV tested safety gate to withstand an impact load of 400 lbs or 180 kg
- The gate design exceeds the requirements of ISO14122-3
- Designed for the most extreme outdoor elements including offshore tested temperatures -51°F / -46°C
- Available in 4 sizes:
 - UDG-22 (22"/560 mm)
 - UDG-27 (27"/690 mm)
 - UDG-32 (32"/820 mm)
 - UDG-37 (37"/950 mm)

Benefits

- Gate automatically closes by gravity
- Gate operates in all conditions
- Gate has a horizontal swing, not a vertical drop



Universal Gravity-Closing Safety Gate



Same hinge for left and right swing direction



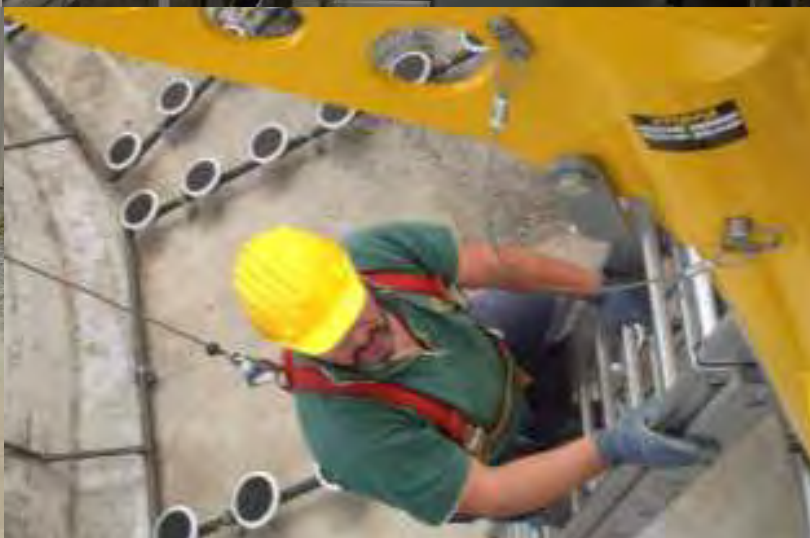
Attaches easily to: angle



pipe



Total Confined Space Entry System



Characteristics

- Easy 3-step cable loading
- Easy install with screws or cable ties
- Non-conductive
- Placed horizontal or vertical
- Material: Nylon (PA)



Our locations

