



## Speakers

### REMOVAL & INSTALLATION

All J-body vehicles covered by this manual have 4 speakers, two in the front door and two in the rear mounted on the rear package shelf, just under the rear window.

#### Front Door Speaker

Fig. 1: Detach the connector for the door speaker



Fig. 2: Remove the four speaker pod retaining screws and . . .

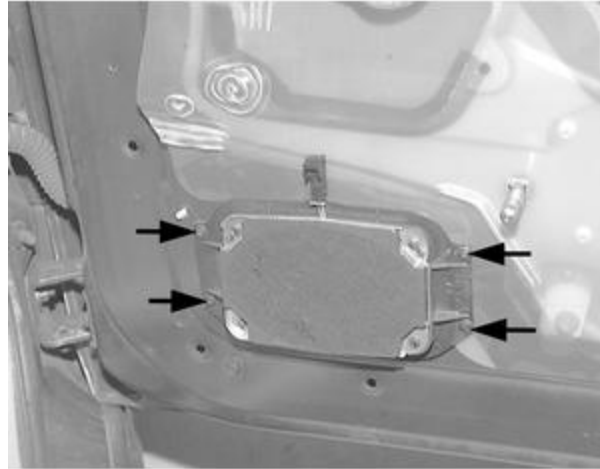


Fig. 3: . . . remove the speaker and pod assembly from the vehicle

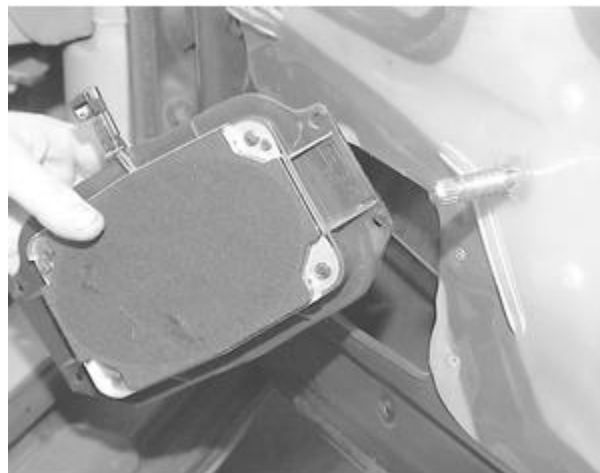


Fig. 4: Remove the four speaker-to-pod retaining screws and . . .

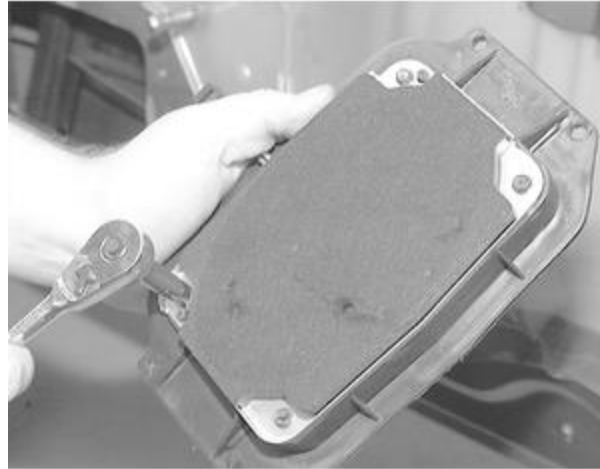


Fig. 5: . . . remove the speaker from the pod



1. Disconnect the negative battery cable.
2. Remove the door trim panel for access to the speaker.
3. Detach the connector for the door speaker.
4. Unfasten the retaining screws, then pull speaker and pod assembly out.
5. Remove the speaker-to-pod retaining screws and remove the speaker from the pod.

**To install:**

6. Place the speaker into the pod and tighten the retaining screws
7. Position the speaker and pod assembly into the opening in the door.
8. Tighten the speaker retaining screws.
9. Attach the connector for the speaker.
10. Install the door trim panel.

11. Connect the negative battery cable.

## Rear Speakers

Fig. 6: Removing the rear window panel trim

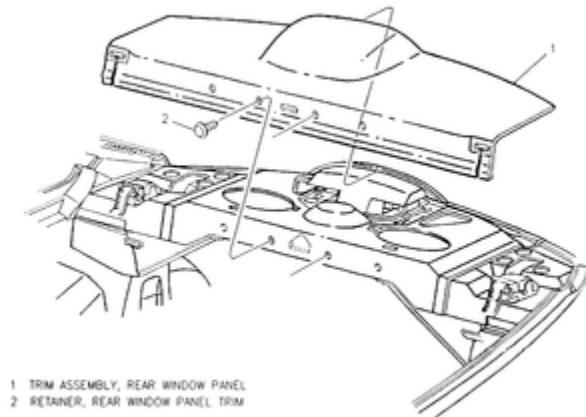


Fig. 7: After removing the rear speaker and spacer assembly, . . .

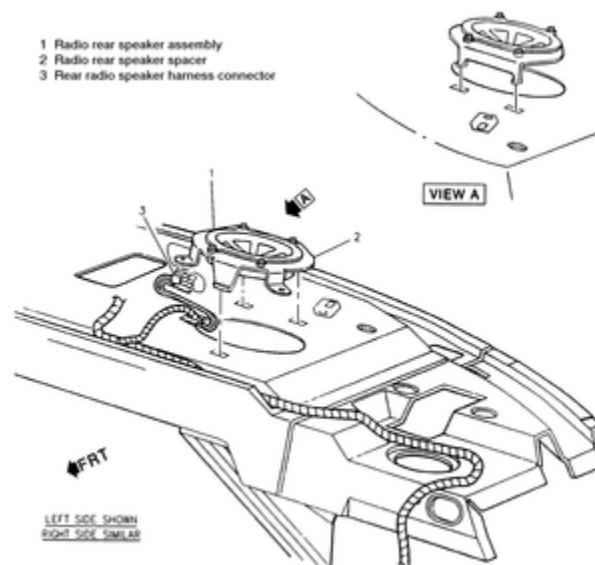
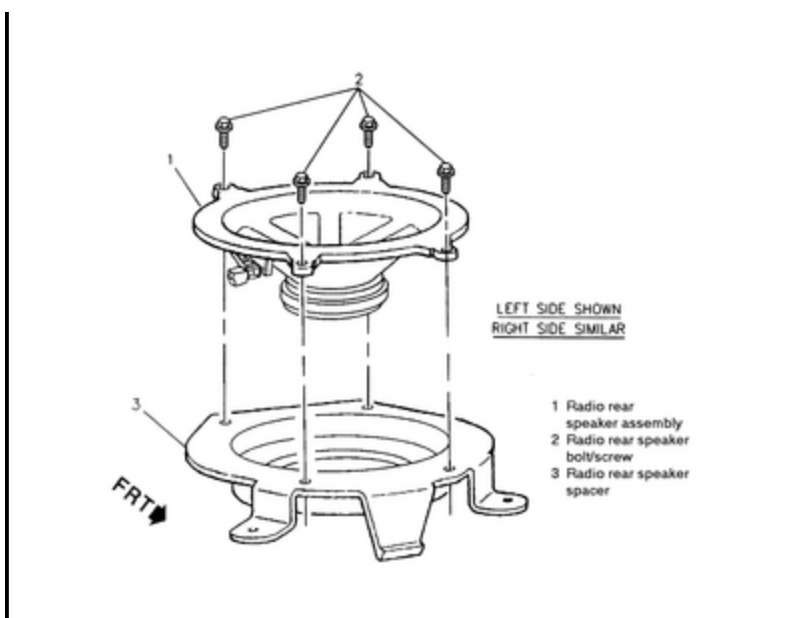


Fig. 8: . . . separate the speaker from the spacer by unfastening the retaining bolts



1. Disconnect the negative battery cable.
2. Remove the rear window panel trim, as outlined in Section 10 of this manual.
3. Press the tab on the front of the rear speaker spacer and lift the spacer.
4. Pull forward on the rear speaker spacer.
5. Detach the speaker wire harness connector.
6. Remove the speaker spacer and speaker.
7. Unfasten the retaining bolts, then remove the speaker from the spacer.

**To install:**

8. Position the speaker to the spacer, and secure using the retaining bolts. Tighten the bolts to 13 inch lbs (1.5 Nm).
9. Attach the rear speaker wire harness connector.
10. Install the spacer by inserting the tabs into the slot at the rear window shelf and press down at the front of the spacer to snap it into place.
11. Install the rear window panel trim.
12. Connect the negative battery cable.

